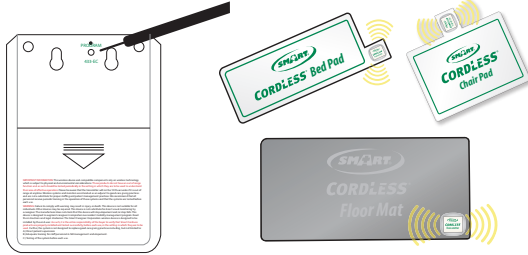




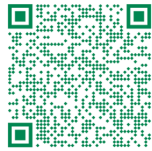
# Program Your Replacement Pad/Mat to 433-EC Quick Start Instructions

**1 ENTER PROGRAMMING MODE:** Use a paperclip or a pointed tool to press and hold the “Program” button within the hole on the back of the monitor, located under “Program”. When the outer two LED Lights on the front of the monitor are solid, release pressure on the button. The lights will remain on to indicate that the monitor is in programming mode.



## REPLACING OR ADDING TO 433-CMU-40/60?

Scan for 433-CMU programming instructions



**2 PROGRAM DESIRED COMPONENTS:**

**\*Have components ready before starting**

**CordLess Sensor Pads/Mats:** The transmitter must already be connected to a sensor pad and turned on. Place pressure on the sensor pad/mat and then release.

**Maximum Range: Up to 300 feet.**

**\*If programming multiple components, repeat step 1 until all components have been programmed & continue to step 3 to exit programming.**

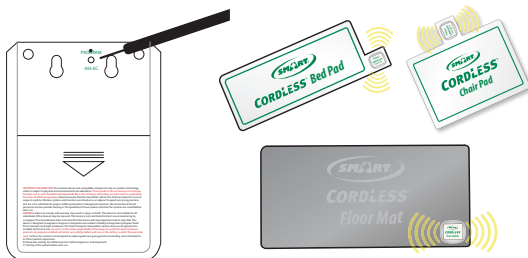
**3 EXIT PROGRAMMING MODE:** Once the programming is complete, press and release the program button on the back of the monitor. The outer two LED lights will blink to confirm programming and turn off.

**Call Customer Service at (800) 650-3637 for assistance**



# Program Your Replacement Pad/Mat to 433-EC Quick Start Instructions

**1 ENTER PROGRAMMING MODE:** Use a paperclip or a pointed tool to press and hold the “Program” button within the hole on the back of the monitor, located under “Program”. When the outer two LED Lights on the front of the monitor are solid, release pressure on the button. The lights will remain on to indicate that the monitor is in programming mode.



## REPLACING OR ADDING TO 433-CMU-40/60?

Scan for 433-CMU programming instructions



**2 PROGRAM DESIRED COMPONENTS:**

**\*Have components ready before starting**

**CordLess Sensor Pads/Mats:** The transmitter must already be connected to a sensor pad and turned on. Place pressure on the sensor pad/mat and then release.

**Maximum Range: Up to 300 feet.**

**\*If programming multiple components, repeat step 1 until all components have been programmed & continue to step 3 to exit programming.**

**3 EXIT PROGRAMMING MODE:** Once the programming is complete, press and release the program button on the back of the monitor. The outer two LED lights will blink to confirm programming and turn off.

**Call Customer Service at (800) 650-3637 for assistance**

# Transmitter Instructions (TM-12)

# Replacement Pads/Mats

Please make sure your transmitter inside the neck of your sensor pad/mat is turned on before trying to program monitor

1. Open neck of pad and pull out transmitter.
2. Turn on the transmitter by moving the switch to the on position.
3. Once you have the switch in the on position, you should see the red light turn on and stay lit for a short time on the top side on the transmitter.
4. Once the red light turns off, it should blink every 45 seconds to show that it has power.
5. Now that you have the transmitter turned on, you can place it back inside the neck of the pad and seal closed with provided sticker. Please activate your pad following the steps below.

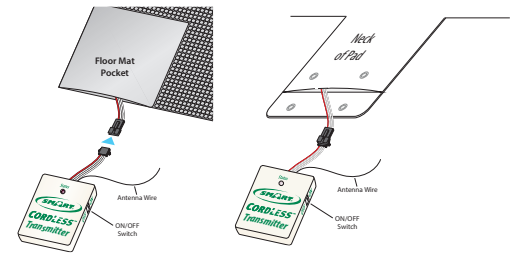
Pads must be activated prior to first use.  
Pads are shipped in "Sleep Mode" to preserve battery life.

To activate:

Press and hold pad for 30 seconds then release. This pad is now activated and "ON". This is only necessary for the first time use.

-See monitor instructions for programming

FCCID: 2AUNUTM-12



\*Once Transmitter is turned on, it is intended to stay on for the life of the pad. DO NOT use as an ON/OFF switch.

**Press and hold for 30 seconds**



# Transmitter Instructions (TM-12)

# Replacement Pads/Mats

Please make sure your transmitter inside the neck of your sensor pad/mat is turned on before trying to program monitor

1. Open neck of pad and pull out transmitter.
2. Turn on the transmitter by moving the switch to the on position.
3. Once you have the switch in the on position, you should see the red light turn on and stay lit for a short time on the top side on the transmitter.
4. Once the red light turns off, it should blink every 45 seconds to show that it has power.
5. Now that you have the transmitter turned on, you can place it back inside the neck of the pad and seal closed with provided sticker. Please activate your pad following the steps below.

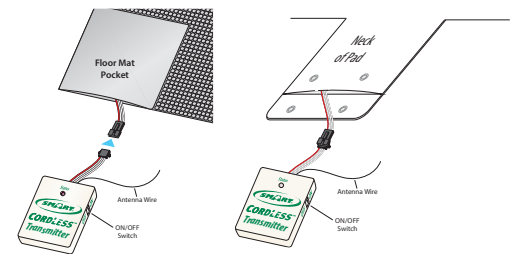
Pads must be activated prior to first use.  
Pads are shipped in "Sleep Mode" to preserve battery life.

To activate:

Press and hold pad for 30 seconds then release. This pad is now activated and "ON". This is only necessary for the first time use.

-See monitor instructions for programming

FCCID: 2AUNUTM-12



\*Once Transmitter is turned on, it is intended to stay on for the life of the pad. DO NOT use as an ON/OFF switch.

**Press and hold for 30 seconds**



FCC Notice:

Any changes or modifications not expressly approved by the party responsible for compliance could void your authority to operate the equipment.

Note: This equipment has been tested and found to comply with the limits for a Class B digital device, pursuant to part 15 of the FCC Rules. These limits are designed to provide reasonable protection against harmful interference in a residential installation. This equipment generates, uses, and can radiate radio frequency energy and, if not installed and used in accordance with the instructions, may cause harmful interference to radio communications. However, there is no guarantee that interference will not occur in a particular installation. If this equipment does cause harmful interference to radio or television reception, which can be determined by turning the equipment off and on, the user is encouraged to try to correct the interference by one or more of the following measures:

- Reorient or relocate the receiving antenna.
- Increase the separation between the equipment and receiver.
- Connect the equipment into an outlet on a circuit different from that to which the receiver is connected.
- Consult the dealer or an experienced RF technician for help.