

GALAXY AUDIO

Water & Sweat Resistant Headset Mic & Pocket-Sized Wireless Receiver Mic System

Quick Start Guide

EVO-E

Components

1. EVO-E Rechargeable Wireless Headset Mic
2. EVO-PREC Rechargeable Wireless Receiver
3. Headset Windscreen
4. 1/4" to 1/8" Cable
5. USB Power Adapter
6. Dual USB-C Charging Cable
7. Protective Neoprene Pouch
8. Quick Start Guide



1. EVO-E Wireless Headset Mic



2. EVO-PREC Rechargeable Wireless Receiver



3. Headset Windscreen



5. USB Power Adapter



4. 1/4" to 1/8" Cable



6. Dual USB-C Charging Cable



7. Protective Neoprene Pouch



8.

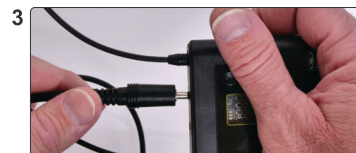
Setup



Use the dual USB cable and USB power supply to charge the headset and receiver.



Using the 1/8" to 1/4" cable, connect the receiver to an input on your sound system/mixer.



Use the output, either mic or line level, that is appropriate for your sound system input.



The included adhesive backed hook and loop fastener can be used to attach the receiver as needed.



Turn on the receiver by pressing the power button.



Select a channel using the up and down buttons.



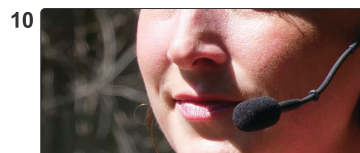
Turn on the headset by pressing the power button.



Select the channel matching the receiver using the channel select button.



Put on the headset, the strap can be used to adjust the fit.



Position the microphone at the corner of the mouth.



Turn up the volume on the sound system channel to the level needed.



**UHF
BAND**



SUPERIOR SOUND
FOR YOU

BE HEARD™

TRUE WIRELESS
EVO®



EVO-E
Water & Sweat Resistant Headset Mic &
Pocket-Sized Wireless Receiver Mic System

Quick Start Guide

Other Helpful Sources

EVO-E Product Page



EVO-E Quick Start

(PDF Download)



YouTube Channel



FAQ

1. Q. How long does a charge last?

A. About 4 hours

2. Q. Can I use the USB cable to give the Receiver continuous power?

A. Yes, however if power is lost you will need to press the power button again.

3. Q. How do I know which output to use?

A. If you do not know if your input is mic level or line level, start with the mic level output. If you are unable to get acceptable level/volume, move to the line level output.

Specifications subject to change without notice.

601 E. Pawnee Wichita, KS 67211 316. 263.2852 FAX 316.263.0642 www.galaxyaudio.com
Distributed in Canada by Audio Distributors International (ADI) 1275 Newton, unit 6 Boucherville, QC J4B 5H2 Canada
450.449.8177 FAX 450.449.8180

Printed in China V20220331



BY



SUPERIOR SOUND FOR YOU

FCC Statement

This equipment has been tested and found to comply with the limits for a Class B digital device, pursuant to part 15 of the FCC Rules. These limits are designed to provide reasonable protection against harmful interference in a residential installation. This equipment generates, uses and can radiate radio frequency energy and, if not installed and used in accordance with the instructions, may cause harmful interference to radio communications. However, there is no guarantee that interference will not occur in a particular installation. If this equipment does cause harmful interference to radio or television reception, which can be determined by turning the equipment off and on, the user is encouraged to try to correct the interference by one or more of the following measures:

- Reorient or relocate the receiving antenna.
- Increase the separation between the equipment and receiver.
- Connect the equipment into an outlet on a circuit different from that to which the receiver is connected.
- Consult the dealer or an experienced radio/TV technician for help.

Caution: Any changes or modifications to this device not explicitly approved by manufacturer could void your authority to operate this equipment.

This device complies with part 15 of the FCC Rules. Operation is subject to the following two conditions: (1) This device may not cause harmful interference, and (2) this device must accept any interference received, including interference that may cause undesired operation.

RF Exposure Information

The device has been evaluated to meet general RF exposure requirement. The device can be used in portable exposure condition without restriction.