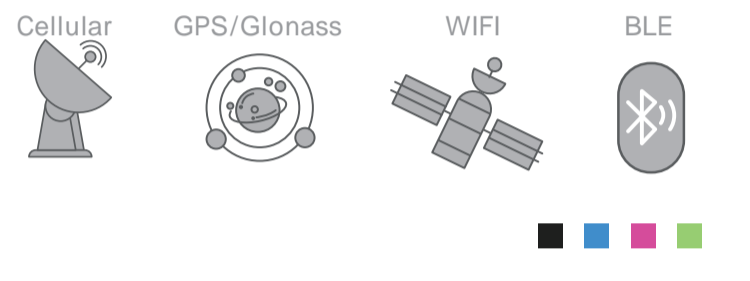
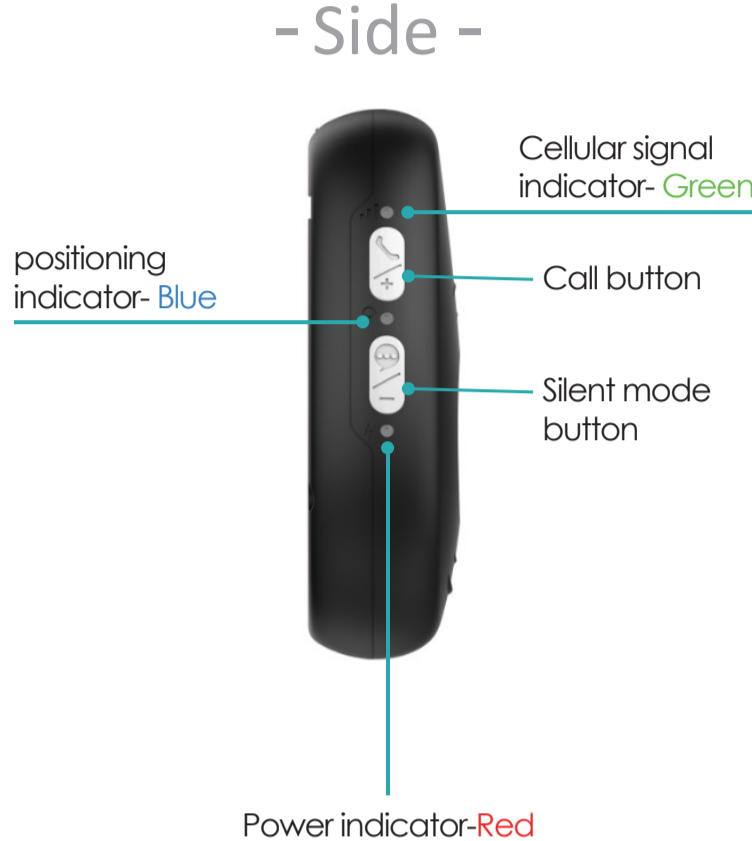


**Personal Mobile Alarm Device**

**Quick Start Guide**



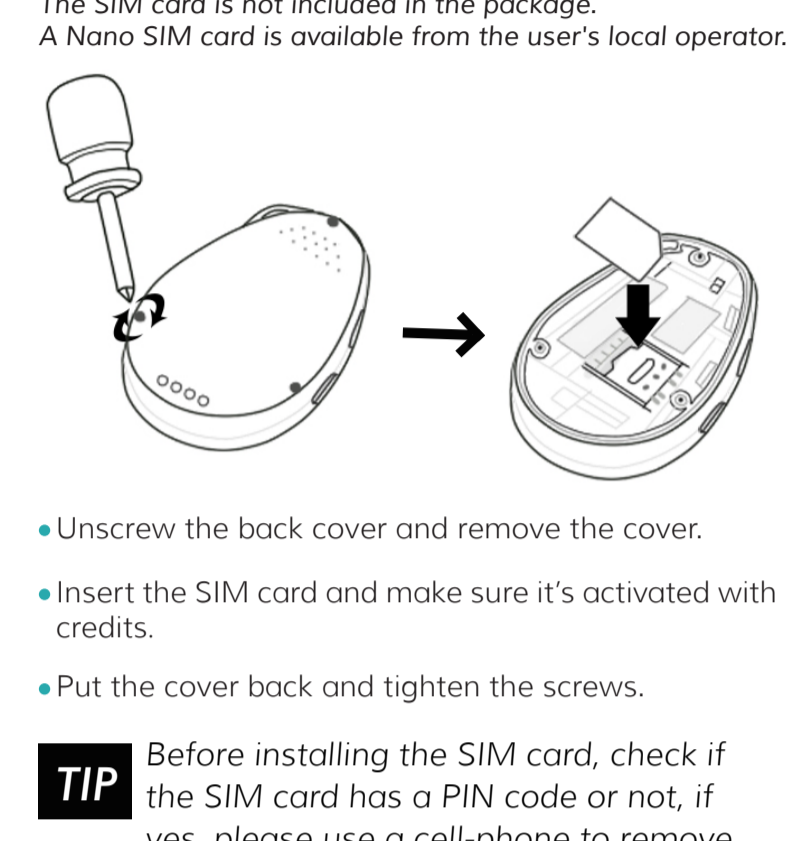
**01 Getting to know your device**



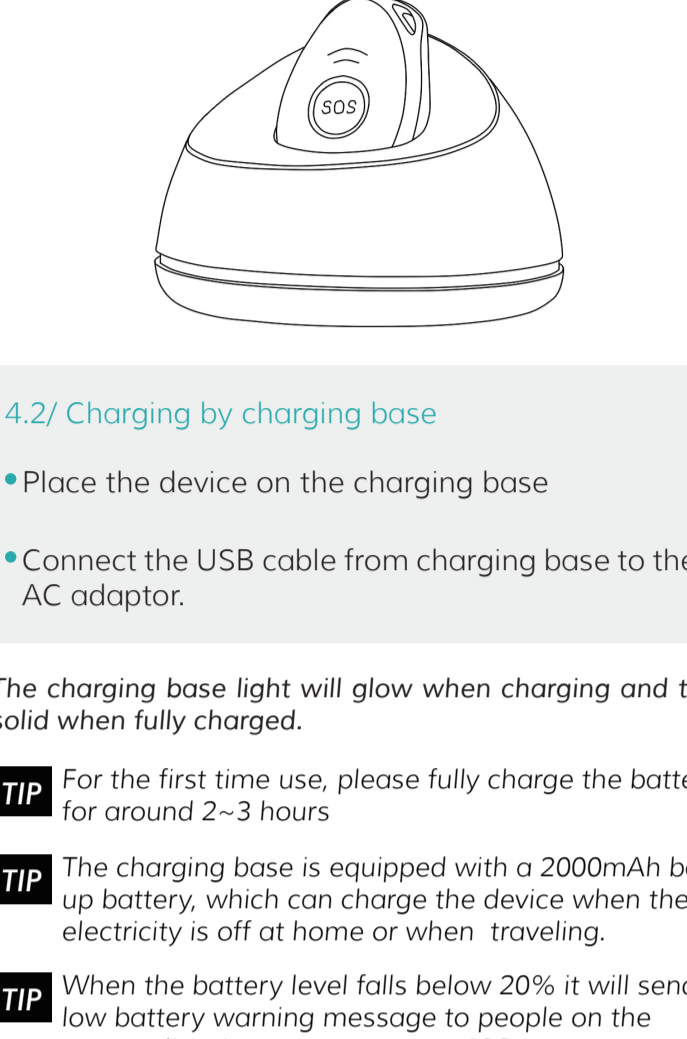
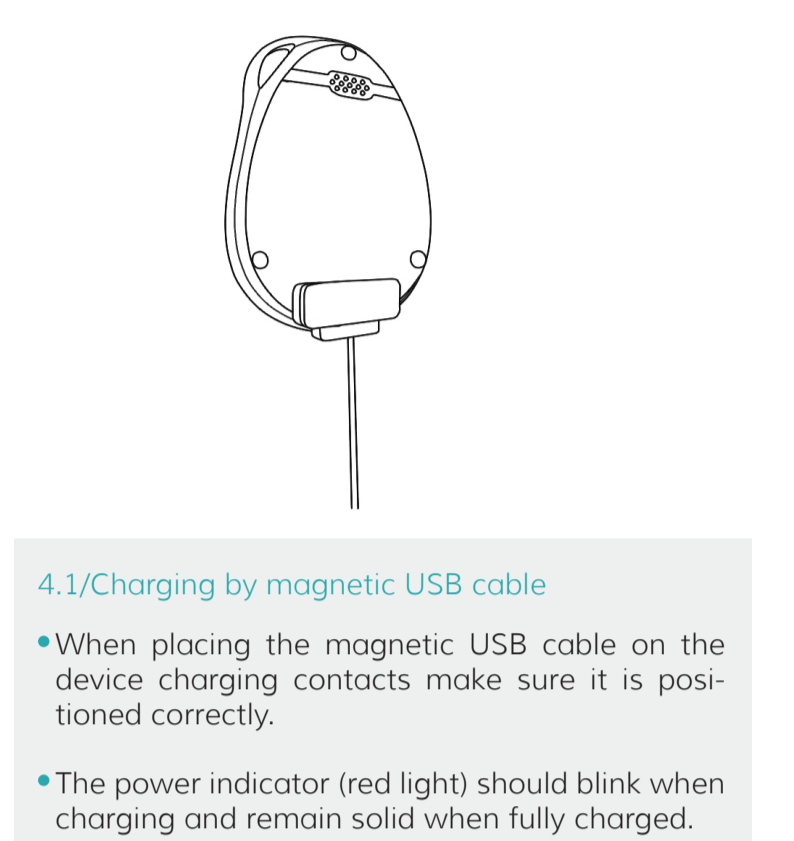
**02 Charging Base**



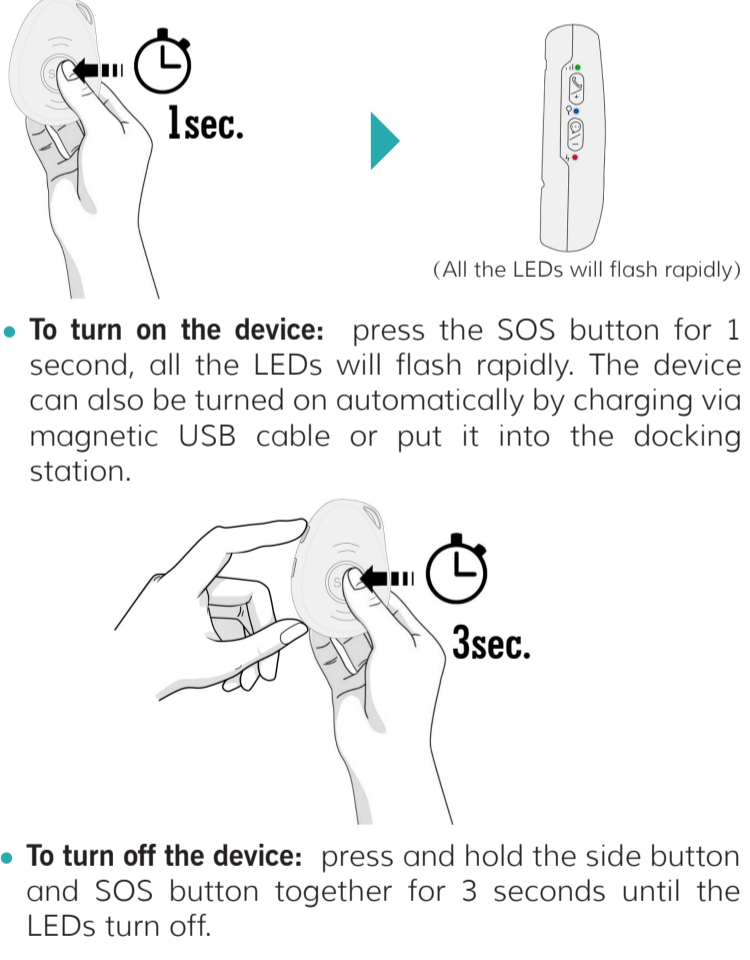
**03 Put the SIM card**



**04 Charging your device**



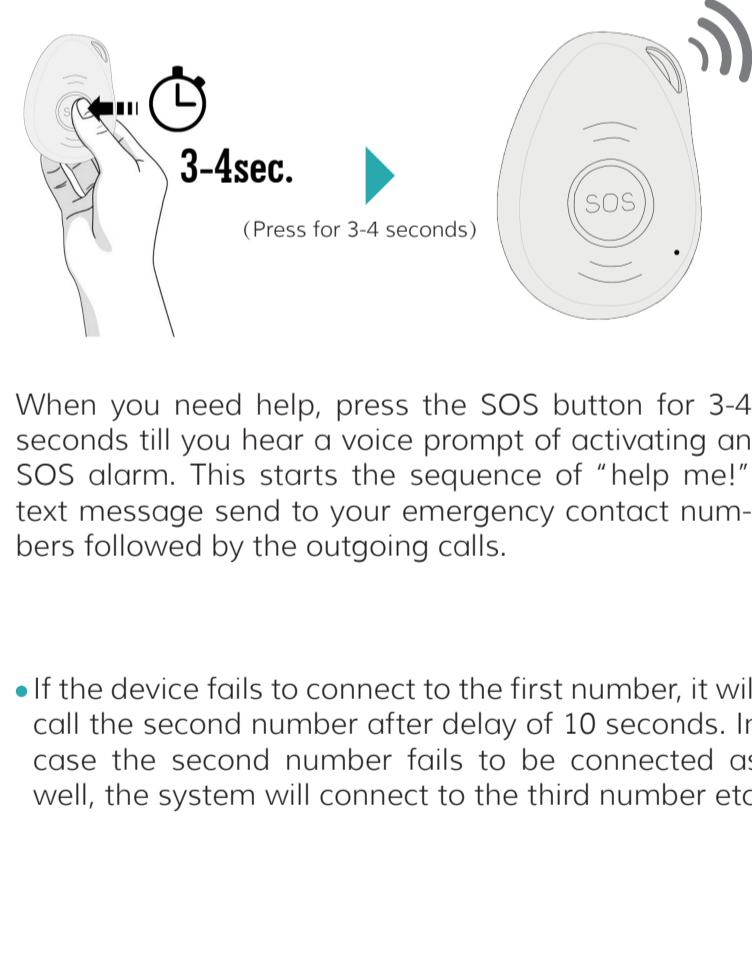
**05 Switching on and off device**



**06 What do the lights mean?**

Cellular signal indicator-Green		
<b>Green</b>	Light shows a single flash rapidly every 3 seconds	Light shows a double flash rapidly every 3 seconds
<b>Means</b>	The device has a stable cellular signal	The device is registered to the cellular network
Positioning indicator-Blue		
<b>Blue</b>	Light shows a single flash rapidly every 3 seconds	Light Off
<b>Means</b>	The device has latest location fix	The device is not fixing the latest location
Power indicator-Red		
<b>Red</b>	Red ON (solid)	Red shows a double flash rapidly every 3 seconds
<b>State</b>	Device has been fully charged	BLE connected
<b>Red</b>	Red Blinking Quickly	Red Off or blinking slowly
<b>State</b>	Battery power is lower than 20%	The device is charging

**07 Activating an SOS Alarm**



Between each call, it will have 10 seconds delay, during this time, user can stop call sequence or prevent a possible false alarm by pressing the SOS button. The receiver of the call can also stop call sequence by pressing 1 on their mobile phone during two-way talking.

Use the side buttons +/- to adjust the sound volume during a call.

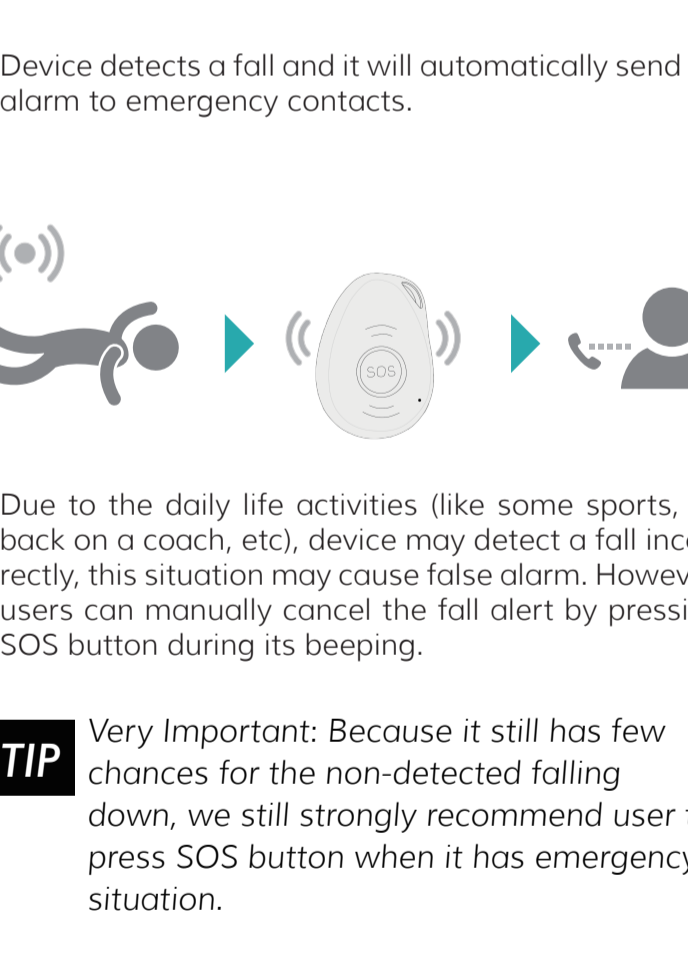
**TIP** Please remember to program emergency contact numbers. It is not mandatory for all ten authorized numbers to be set, however a minimum of one must always be set.

**TIP** Please be patient during the call sequence. There can be short delays as the alarm calls phones who maybe out of range or delivered to people's voicemail.

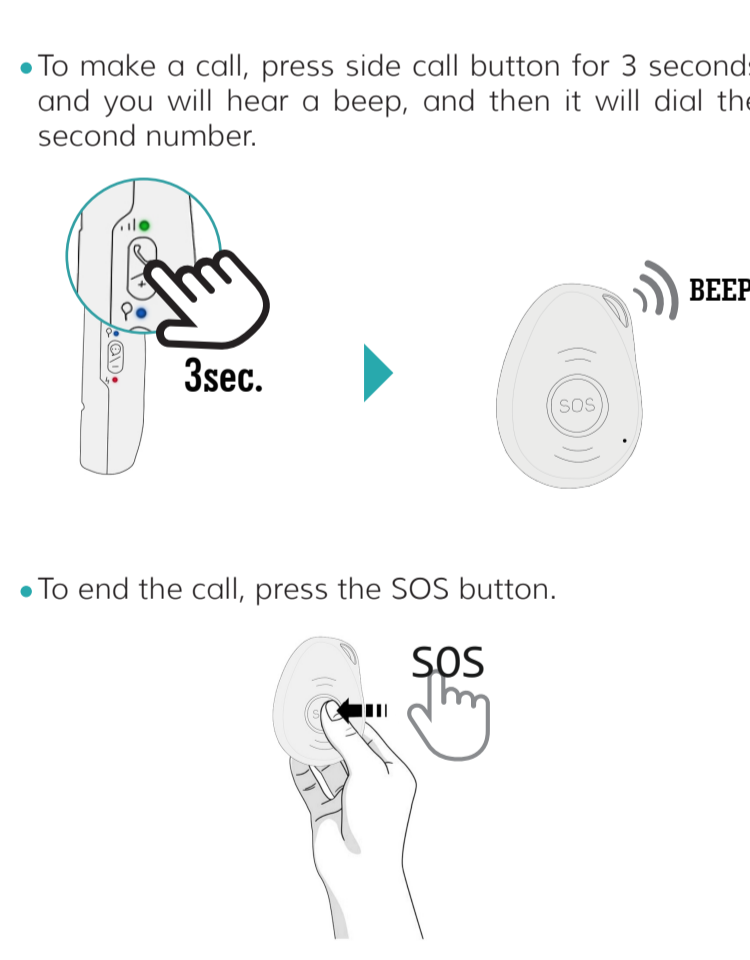
**08 Getting a GPS fix**



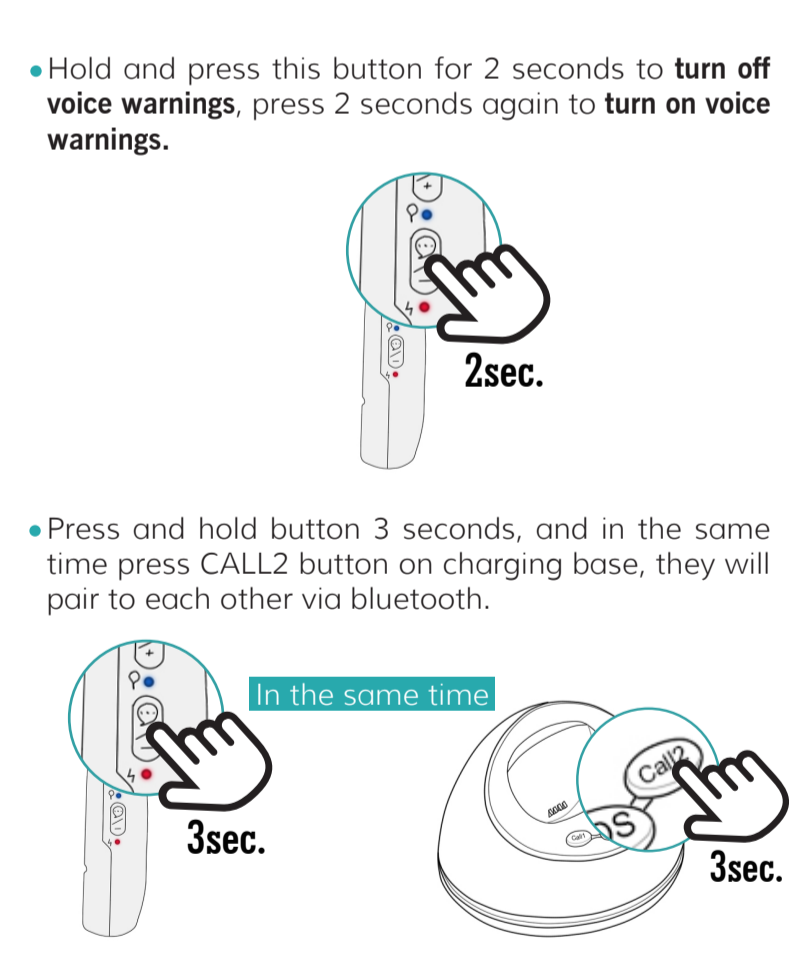
**09 Fall down alarm**



**10 Making a Phone Call**



**11 Silent mode button**



**Specification:**

- Dimension: 61mm\*44mm\*16mm
- Weight: 40g
- Battery: Rechargeable, 3.7V, 800mAh
- Charging voltage: 5V DC
- Waterproof: IP67
- 4 locating technologies: GPS, BLE, WIFI, LBS

**Cautions:**

Please comply with the instructions to extend the unit life:

- Don't use & store the unit in dusty places.
- Don't put the unit in overheated or over cooled places.
- Clean the unit with a piece of dry cloth. Don't clean in chemicals, detergent.
- Don't disassemble or refill the unit.
- Using other batteries will cause unwanted situation.

**Warning:** Keep the IMEI and SIM in confidential, or your privacy may expose.

**FCC Warning:**  
This equipment has been tested and found to comply with the limits for a Class B digital device, pursuant to part 15 of the FCC Rules. These limits are designed to provide reasonable protection against harmful interference in a residential installation. This equipment generates, uses and can radiate radio frequency energy and, if not installed and used in accordance with the instructions, may cause harmful interference to radio communications. However, there is no guarantee that interference will not occur in a particular installation. If this equipment does cause harmful interference to radio or television reception, which can be determined by turning the equipment off and on, the user is encouraged to try to correct the interference by one or more of the following measures:

- Reorient or relocate the receiving antenna.
- Increase the separation between the equipment and receiver.
- Connect the equipment into an outlet on a circuit different from that to which the receiver is connected.
- Consult the dealer or an experienced radio/TV technician for help.

**Caution:** Any changes or modifications to this device not explicitly approved by manufacturer could void your authority to operate this equipment.  
This device complies with part 15 of the FCC Rules. Operation is subject to the following two conditions: (1) This device may not cause harmful interference, and (2) this device must accept any interference received, including interference that may cause undesired operation.

**SAR**  
Specific Absorption Rate (SAR) information:  
This Personal Mobile Alarm System meets the government's requirements for exposure to radio waves. The guidelines are based on standards that were developed by independent scientific organizations through periodic and thorough evaluation of scientific studies. The standards include a substantial safety margin designed to assure the safety of all persons regardless of age or health. FCC RF Exposure Information and Statement the SAR limit of USA (FCC) is 1.6 W/kg averaged over one gram of tissue. Device type: Personal Mobile Alarm System (FCC ID: 2AUMIEV-07BX-LTE) has also been tested against this SAR limit. This device was tested for typical body-worn operations with the back of the product kept 10mm from the body. To maintain compliance with FCC RF exposure requirements, use accessories that maintain a 10mm separation distance between the user's body and the back of the product. The use of accessories that do not satisfy these requirements may not comply with FCC RF exposure requirements, and should be avoided.