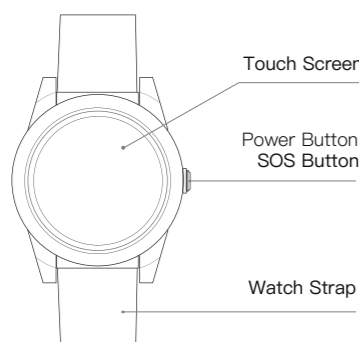


Smart Watch

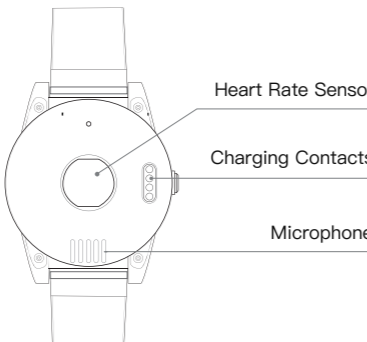
The smart watch is designed for the elderly and lone worker. The watch combines many intelligent functions, such as SOS alarm, two way talking, heart rate, pedometer and so on. The operation is very simple. Please read this operation guide carefully before using it.

1 Getting To Know Your Watch

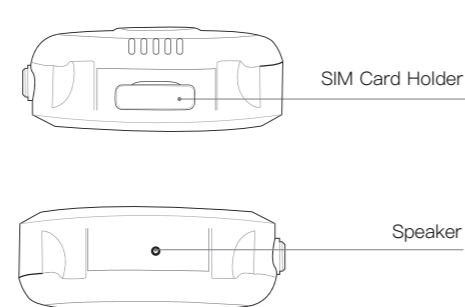
- Front



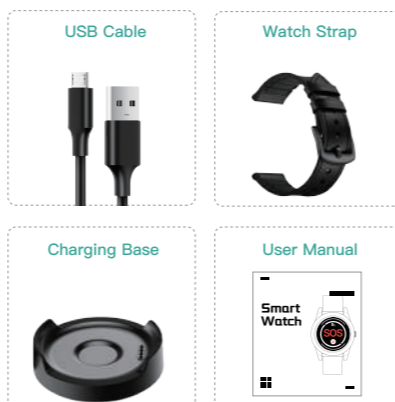
- Back



- Side



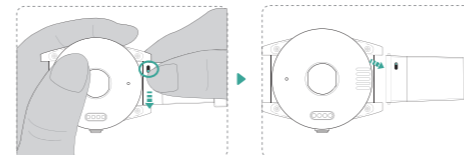
2 Accessories



3 SIM Card Installation

Please do as below picture shows.

- 1 Remove Strap from watch.

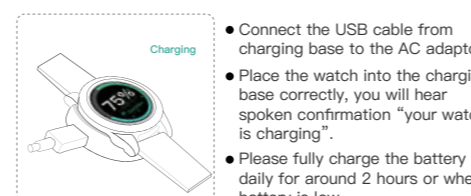
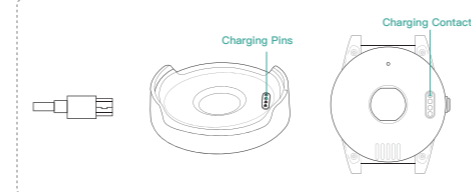


- 2 Remove SIM card holder from the watch and put a Nano SIM on the holder.



- 3 Put the holder back and lock the strap on watch.

4 Charging your Watch



TIP The watch battery is not removable. After a long period of inactivity, the watch may not be turned on due to low battery. please charge it every day to ensure that the watch can work normally.

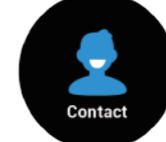
5 Functions and Basic Settings

When the watch is turned on, slide leftwards or rightwards to view all available functions. It displays Watch Face, Weather, Heart Rate, Contact, Steps and Settings.



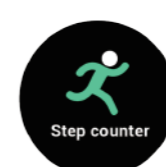
- 1 At watch face, you can see time, date, heart rate and steps.
- 2 There are two watch faces for your option. Sliding right to the end and click settings, select watch face and choose what you like by sliding left and right.

6 Making a phone call



- Slide rightwards to enter the interface of Contact, select the contact person, and make a call.

7 Steps



- Keep sliding right to enter the interface of Steps, step counting is enabled by default and opened all day. You can also view distance and consumed calories.

www.eviewgps.com

8 Heart Rate Measurement



- Wear the watch on the left hand and click heart rate, after several seconds checking, the screen will display your heart rate BPM.

9 Activating an SOS Alarm

There are two ways to activate SOS alarm.

- 1 Pressing the side button for 3 seconds until you feel the watch vibrate.



- 2 When screen is on, long press the screen for 3 seconds until you feel the watch vibrate.



- After SOS alarm is activated, you will hear a voice prompt confirming the activation of the SOS alert and allowing you approximately 10 seconds to cancel the alarm. If the SOS is not cancelled in time an SOS alert text message is immediately sent to the emergency contact numbers followed by the outgoing calls.

- If the watch fails to connect to the first number, it will call the second number after delay of 10 seconds. In case the second number fails to be connected as well, the system will connect to the third number etc.

- Between each call, it will have 10 seconds delay, during this time, user can stop call sequence or prevent a possible false alarm by pressing SOS button.

10 Notes on Voicemail

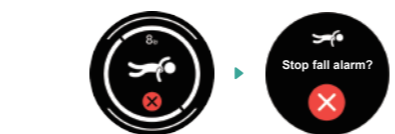
We advise emergency contacts to switch off any voice mail facility on their phone to prevent delay in reaching help. However, the following safe-guards are used if a voicemail is reached:

- The wearer can end the current call by clicking the SOS button and the calling sequence to continue if the voice mail does not automatically disconnect.

- An emergency contact can call back to the watch if they are disconnected. Remember that the watch may be already calling the next contact unless the calling sequence has been stopped.

11 Fall Alarm

The watch can automatically detect a fall. When this occurs the watch will give a warning message to the user.



- some daily activities like sports or even sitting down abruptly can trigger the fall alarm.
- The wearer has a short time to cancel a fall alarm by clicking the Cancel on the watch. If the alarm is not cancelled, emergency contacts will be called.

TIP It is possible that the watch will not detect every real fall. We strongly advise the wearer to press the SOS button in any emergency situation, if they are able.

12 Getting a GPS fix

To get an initial GPS fix, go outdoors or near a window so the watch can get a fix on the satellites. This could take few minutes depending on your environment.



TIP GPS functionality may be unavailable or inaccurate in some locations (for example, availability or accuracy of GPS location may be impacted inside buildings or near tall buildings or other tall features or underground).

- The watch also provides Wi-Fi, LBS positioning, when GPS is unavailable, it will switch to Wi-Fi and LBS for locating.
- The home Wi-Fi and beacons provide at home out of home information in addition to optimizing watch battery life.

- Please note Wi-Fi and LBS tracking service is not 100% accurate, it can be used to approximate your location only.

13 General Specifications

- Dimension: 47.5mm*16.9mm/1.87in*0.66in.
- Weight: 65g/2.29oz.
- Battery: Rechargeable, 3.7V,580mAh.
- Charging voltage: 5V DC.
- Waterproof: IPX8.
- 4 locating technologies: GPS, BLE, Wi-Fi, LBS.

TIP Please comply with the instructions to extend the watch life:

- Don't use & store the watch in dusty, hot, cold, electric, chemical, areas. Please always keep the watch and accessories dry.
- Don't drop, shake or knock the watch, Rough handling can break it.
- Clear the watch with a piece of dry cloth. Don't clean in chemicals, detergent.
- Don't disassemble or refit the watch as it will void your warranty.
- Using other batteries will cause unwanted situation.
- To avoid accident, never play the watch while driving.
- Please turn off the watch in aircraft and follow any restrictions. Wireless devices can cause interference in aircraft.

Smart Watch



FCC Statement

This device complies with part 15 of the FCC rules. Operation is subject to the following two conditions: (1) this device may not cause harmful interference, and (2) this device must accept any interference received, including interference that may cause undesired operation.

Changes or modifications not expressly approved by the party responsible for compliance could void the user's authority to operate the equipment.

NOTE: This equipment has been tested and found to comply with the limits for a Class B digital device, pursuant to part 15 of the FCC Rules. These limits are designed to provide reasonable protection against harmful interference in a residential installation. This equipment generates uses and can radiate radio frequency energy and, if not installed and used in accordance with the instructions, may cause harmful interference to radio communications. However, there is no guarantee that interference will not occur in a particular installation. If this equipment does cause harmful interference to radio or television reception, which can be determined by turning the equipment off and on, the user is encouraged to try to correct the interference by one or more of the following measures:

- Reorient or relocate the receiving antenna.
- Increase the separation between the equipment and receiver.
- Connect the equipment into an outlet on a circuit different from that to which the receiver is connected.
- Consult the dealer or an experienced radio/TV technician for help.

Specific Absorption Rate (SAR) information:

This device meets the government's requirements for exposure to radio waves. The guidelines are based on standards that were developed by independent scientific organizations through periodic and thorough evaluation of scientific studies. The standards include a substantial safety margin designed to assure the safety of all persons regardless of age or health. FCC RF Exposure Information and Statement the SAR limit of USA (FCC) is 1.6 W/kg averaged over one gram of tissue. Device types: This device has also been tested against this SAR limit. This device was tested for typical body-worn operations with the back of the device kept 10mm from face and 0mm from wrist worn. To maintain compliance with FCC RF exposure requirements, use accessories that maintain an 0mm separation distance between the user's wrist worn and the back of the device and an 10mm separation distance between the user's face and the front of the device. The use of belt clips, holsters and similar accessories should not contain metallic components in its assembly. The use of accessories that do not satisfy these requirements may not comply with FCC RF exposure requirements, and should be avoided.