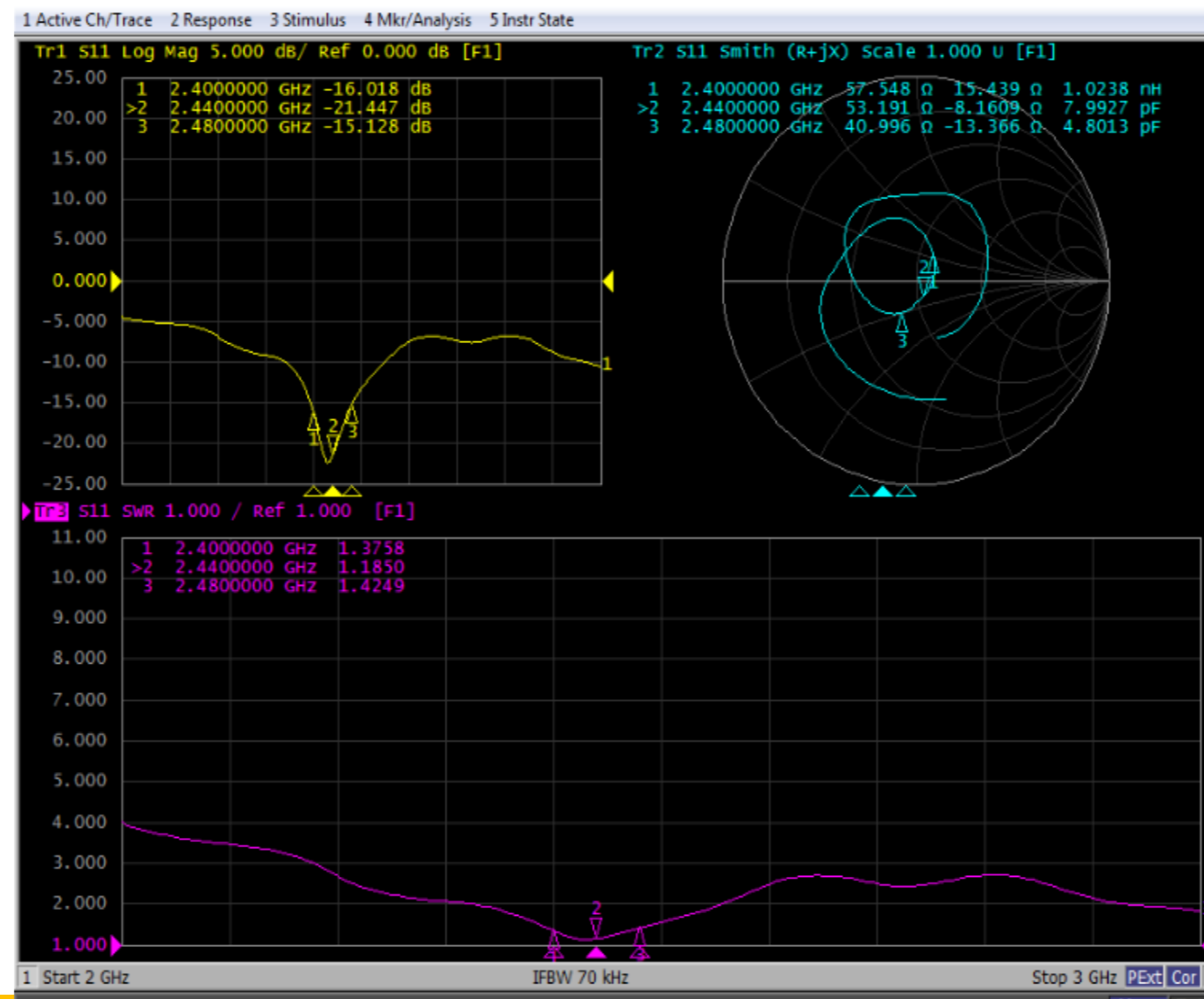


# Antenna Test Report

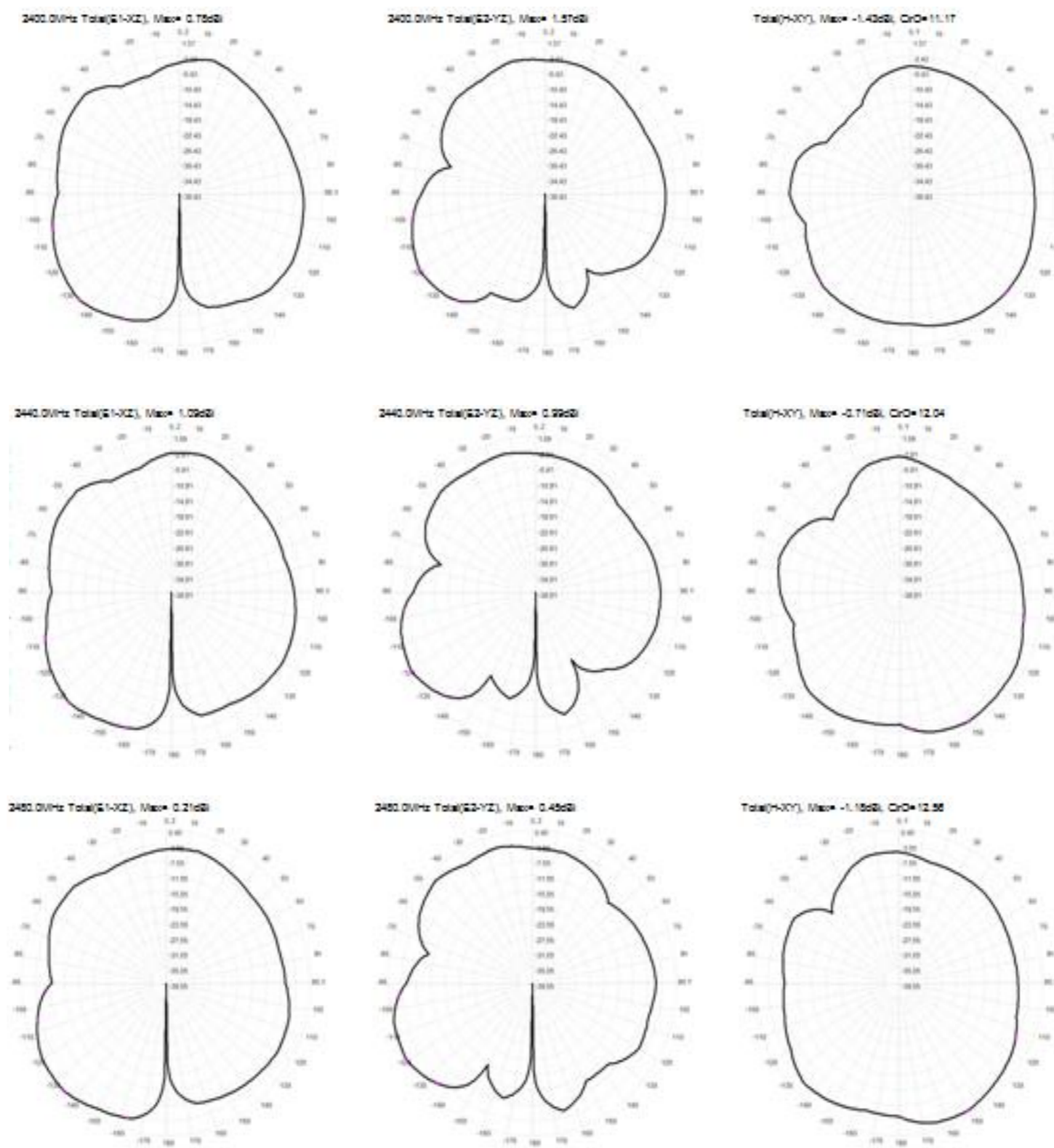
## Antenna impedance parameters



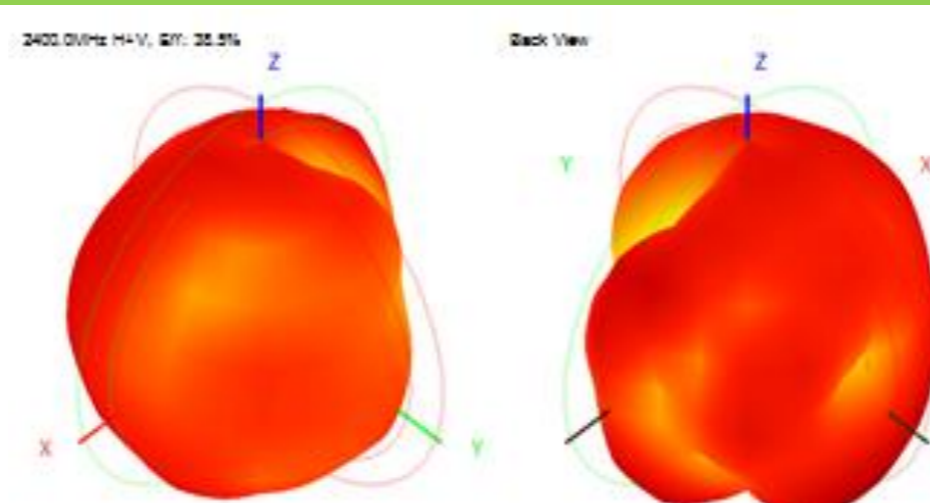
## Antenna efficiency parameters

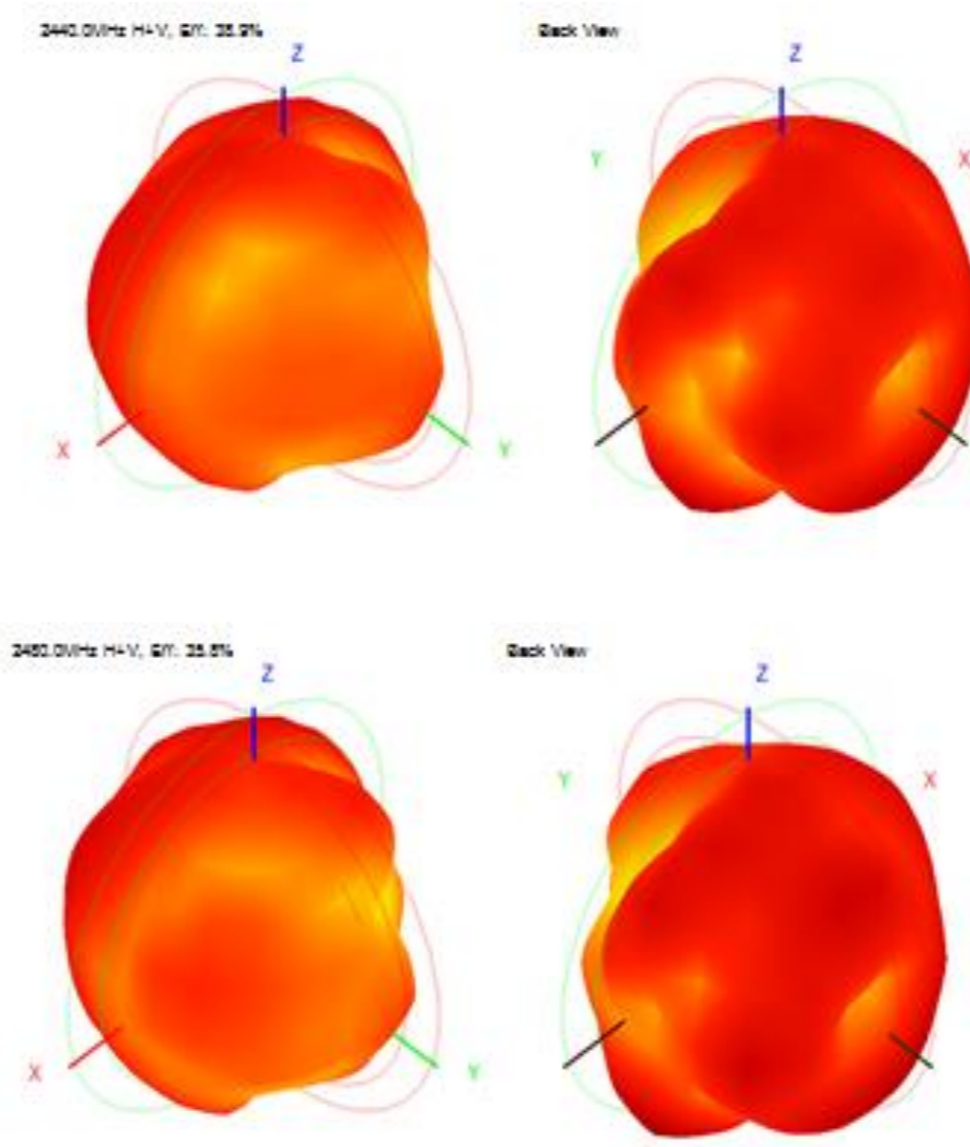
Frequency (MHz)	Efficiency (dB)	Gain (dBi)
2400	38.51	1.57
2410	38.97	1.50
2420	39.57	1.75
2430	39.01	1.89
2440	38.91	2.07
2450	38.93	2.27
2460	37.75	2.19
2470	36.96	1.95
2480	35.85	1.52
2490	35.83	1.20
2500	35.92	1.03

## 2D Pattern



## 3D Pattern

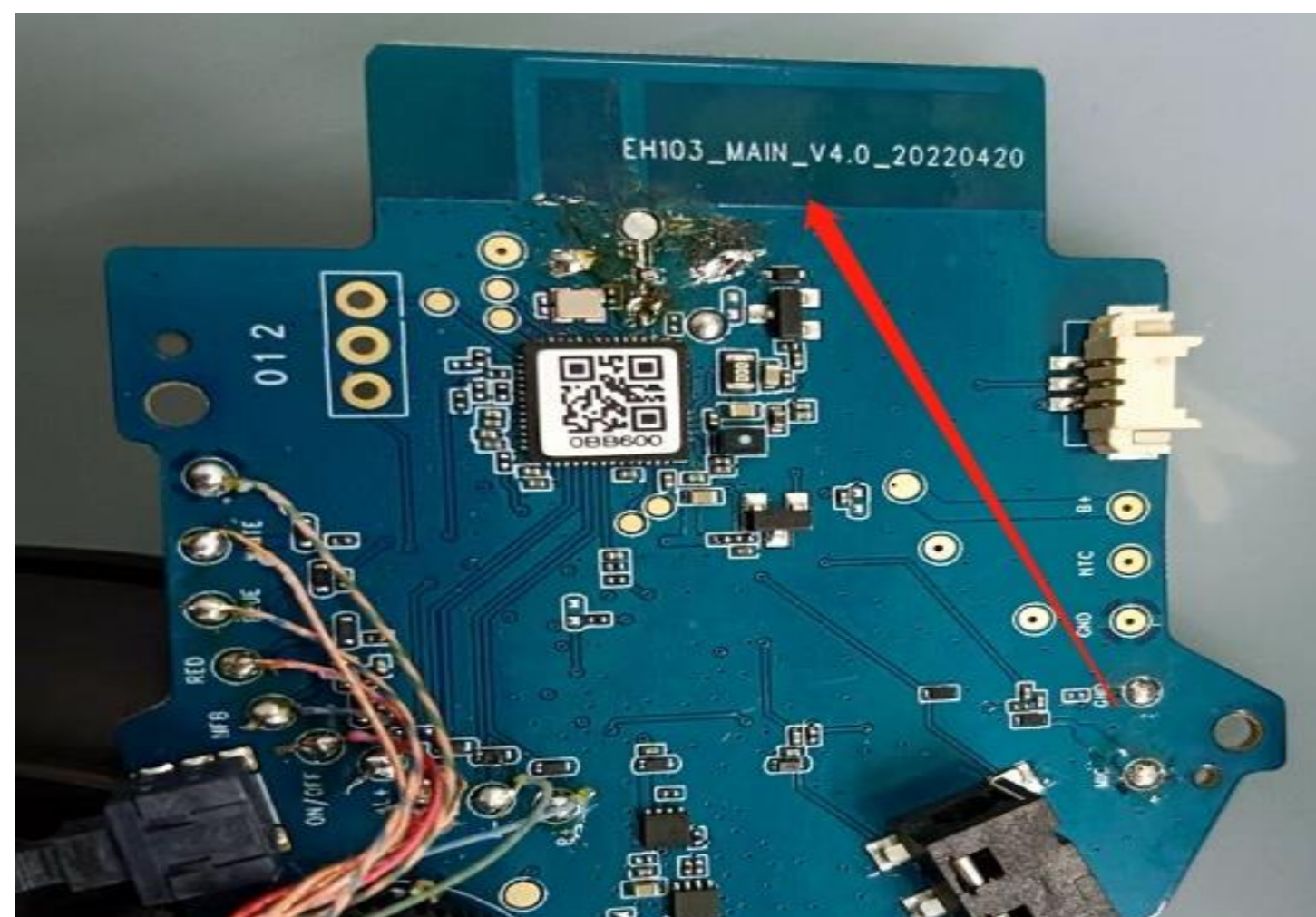




OTA Test

OTA Test		
BT		TRP/TIS
	BlueTh-0000-TX	6.35
	BlueTh-0039-TX	6.81
	BlueTh-0078-TX	6.76
	BlueTh-0000-RX	-87.28
	BlueTh-0039-RX	-86.58
BlueTh-0078-RX	-86.50	

PCB Antenna Location



Bluetooth headset antenna distance measurement				
Test Item	Test Method	Test Result	Criterion	Test site
Cross Body	Put the test phone in the front, back, left and right pockets respectively, and do bending, squatting, and turning left and right for test	PASS		
Distance	Put the mobile phone(iphone 11 pro max) on the test bracket with a height of 70cm above the ground, and record the straight line distance when DUT disconnected, or silent during rotation	25+ Meters	The sound quality is clear, no intermittent, no noise echo, no disconnection and other abnormal	