

IC/ISED Warning

ISED Requirements:

This device complies with Innovation, Science, and Economic Development Canada licence-exempt RSS standard(s). Operation is subject to the following two conditions:

- (1) this device may not cause interference, and
- (2) this device must accept any interference, including interference that may cause undesired operation of the device.

Le présent appareil est conforme aux CNR d'Innovation, Sciences et Développement économique Canada applicables aux appareils radio exempts de licence. L'exploitation est autorisée aux deux conditions suivantes :

- (1) l'appareil ne doit pas produire de brouillage, et
- (2) l'utilisateur de l'appareil doit accepter tout brouillage radioélectrique subi, même si le brouillage est susceptible d'en compromettre le fonctionnement.

The device is compliance with RF exposure guidelines, users can obtain Canadian information on RF exposure and compliance. The minimum distance from body to use the device is 20cm.

Le présent appareil est conforme

Après examen de ce matériel aux conformité ou aux limites d'intensité de champ RF, les utilisateurs peuvent sur l'exposition aux radiofréquences et la conformité and compliance d'acquérir les informations correspondantes. La distance minimale du corps à utiliser le dispositif est de 20cm.

FCC-ID Warning

This equipment has been tested and found to comply with the limits for a Class B digital device, pursuant to part 15 of the FCC Rules. These limits are designed to provide reasonable protection against harmful interference in a residential installation. This equipment generates uses and can radiate radio frequency energy and, if not installed and used in accordance with the instructions, may cause harmful interference to radio communications. However, there is no guarantee that interference will not occur in a particular installation. If this equipment does cause harmful interference to radio or television reception, which can be determined by turning the equipment off and on, the user is encouraged to try to correct the interference by one or more of the following measures:

- Reorient or relocate the receiving antenna.
- Increase the separation between the equipment and receiver.
- Connect the equipment into an outlet on a circuit different from that to which the receiver is connected.
- Consult the dealer or an experienced radio/TV technician for help.

Any Changes or modifications not expressly approved by the party responsible for compliance could void the user's authority to operate the equipment.

This device complies with part 15 of the FCC Rules. Operation is subject to the following two conditions: (1) This device may not cause harmful interference, and (2) this device must accept any interference received, including interference that may cause undesired operation.

FCC RF EXPOSURE STATEMENT:

This equipment complies with FCC radiation exposure limits set forth for an uncontrolled environment. This equipment should be installed and operated with minimum distance 20cm between the radiator & your body. This transmitter must not be co-located or operating in conjunction with any other antenna or transmitter.

Warranty Information

Wyze warrants to the original owner of the Product that the Wyze Thermostat will be free from defects in materials and workmanship for a period of one (1) year from the date you purchased your Product from Wyze or an authorized retailer (the "Warranty Period") Wyze will, at its sole option, either (a) repair or replace any defective Product or component or (b) accept the return of the Product and refund the money actually paid by the original purchaser for the Product to the payment method used by the purchaser. This warranty is not transferable and applies only to the original purchaser. Repairs or replacements may be made with new or refurbished products or components, at Wyze's sole discretion. If the Product or a component incorporated in that Product is no longer available, Wyze may, at Wyze's sole discretion, replace the Product with the available model nearest to the original model's form, functionality, and performance.

Warning

1. Ensure power to your HVAC system is off at the breaker before adjusting any wires at your thermostat or control board.
2. Do not attempt to open or modify in anyway the Wyze thermostat or CWA contained within this package.
3. If installing the thermostat new, ensure the thermostat is placed in a location away of from direct sunlight at all times. Direct sunlight will effect temperature readings.
4. Bluetooth associated logos are registered trademarks owned by Bluetooth SIG, Inc. and any use of such marks by Wyze Lab Inc. is permitted under license. Other trademarks and trade names are those of their respective owners.

Specifications

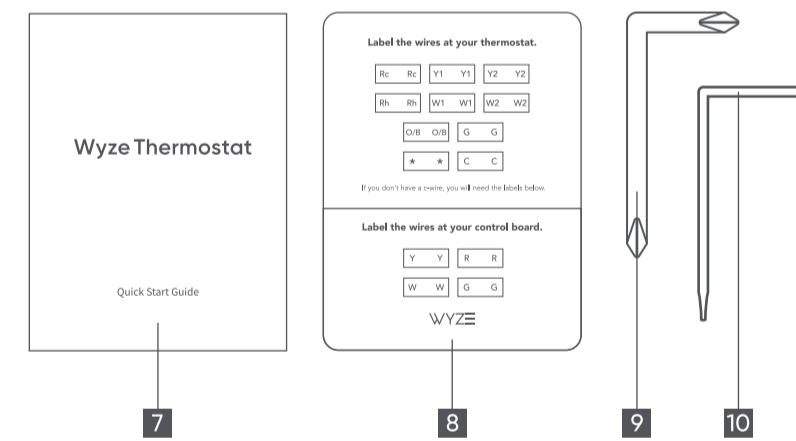
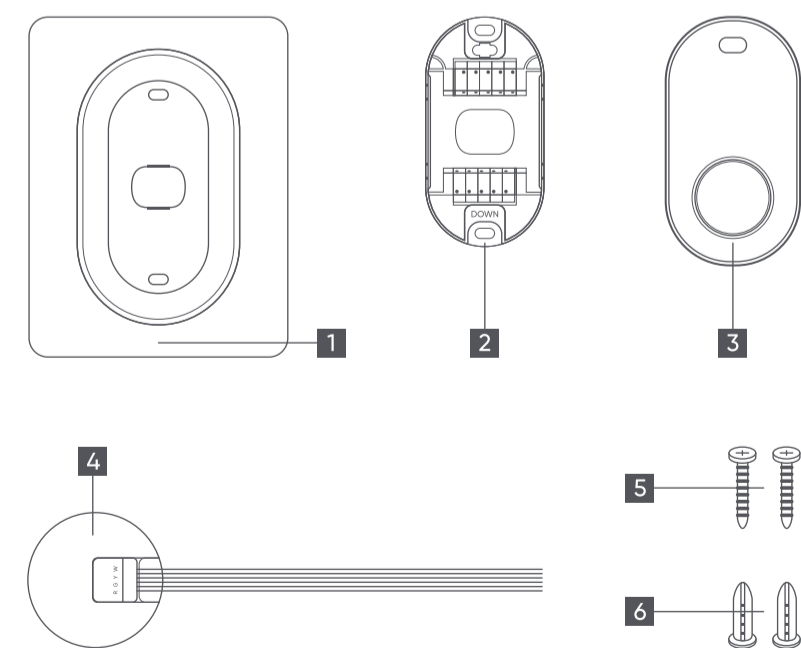
Model: WTherm
 Bluetooth: V4.2
 INPUT: 24V~ 60Hz 0.15A max
 Connectivity: Wyze Sense
 Compatibility: Android 5.0+, iOS 9.0+
 Operation Temperature: 32~130°F (0~55°C)
 Operation Humidity: 5%~95%RH (non-condensing)
 Storage Temperature: -22~140°F (-30~60°C)
 Storage Humidity: 5%~95%RH (non-condensing)

WYZE BUILT WITH degrii

In the Box

Wall Cover x1
 Back Panel x1
 Thermostat x1
 Screw and Anchor x2
 Quick Start Guide x1

C-wire Adapter with Cables x1
 Labels x1
 Phillips Screwdriver x1
 Flathead Screwdriver x1



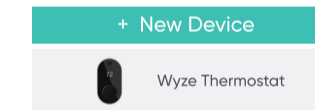
- 1 Wall Cover
- 2 Back Panel
- 3 Thermostat
- 4 C-wire Adapter with Cables (Only used when C-wire is not available)
- 5 Screws
- 6 Anchors
- 7 Quick Start Guide
- 8 Labels
- 9 Phillips Screwdriver
- 10 Flathead Screwdriver

Setup

- 1 Download the Wyze App and create an account.



- 2 On the home page, click "+New Device" to add our device.



- 3 Follow the App to complete the installation. App guided steps:

- Powering off your heating/cooling system
- Removing your old thermostat
- Selecting wiring for the Wyze thermostat
- Securing the Back Panel to the wall
- Installing your new Wyze thermostat
- Connecting the Wyze thermostat to your network

* Installation height < 2m

Compatibility

- Compatible with 24-volt systems such as forced air, hydronic, heat pump (including dual fuel), oil, gas and electric.
- The Wyze Thermostat is compatible with most single-stage and multi-stage conventional and heat pump heating and cooling systems.
- Not working with zoning panel (zoning controller).
- Not compatible with modulating equipment (Redlink, Comfortmater, Climate Talk).

Electrical Requirements	24VAC
Wires	No need for Common (C-wire)
Conventional (Furnace and Air Conditioning)	Up to 2 stages heat Up to 2 stages cool
Heat Pumps	Up to 4 heat stages Up to 2 stages cool
Accessory (Humidifier, Dehumidifier, Emergency heat, Ventilator)	One Accessory support available
Transformer (Boiler and Air Conditioning)	Can support all combinations of single and dual transformers

Need Help

Tutorial Videos
www.youtube.com/wyzelabs

Troubleshooting & FAQs
support.wyze.com

Community
forums.wyze.com

Contact Us
support@wyze.com
 1-844-WYZECAM

Wyze Thermostat

Quick Start Guide