

2. Pass the U-bolt through the cuts of pole holder and mounting bracket. Tighten it in place with attaching nuts.

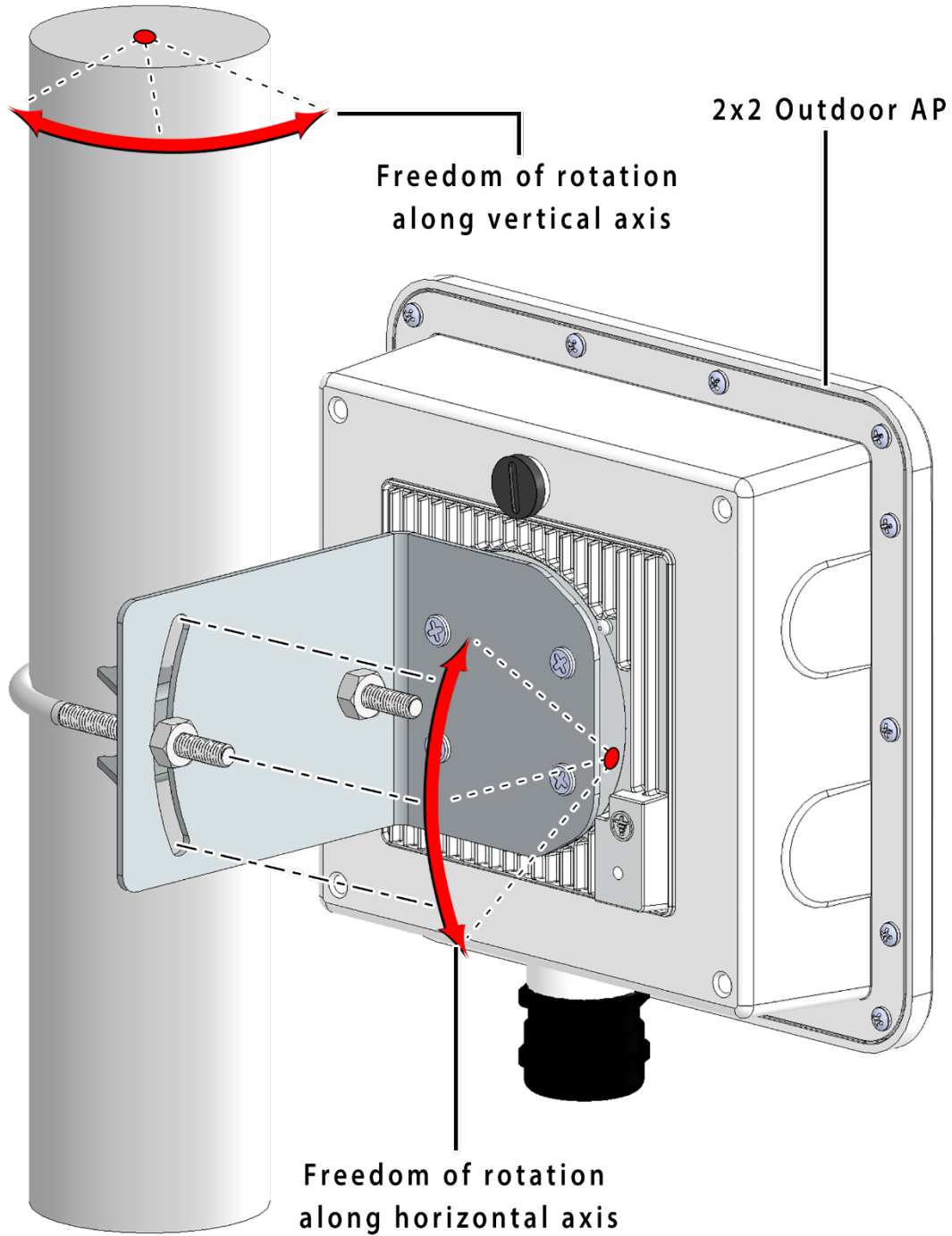


Figure 74: Final alignment of 2x2 outdoor AP and mounting bracket

3. As shown above, the 2x2 outdoor AP has the freedom of movement along the vertical and horizontal axis.



4. The final alignment of 2x2 outdoor AP in a pole mounting is shown in the figure below:



Figure 75: Basic overview of pole mounted 2x2 outdoor AP

21.2.2 2x2 outdoor AP mounting to the Wall

To mount the device onto the wall, foundation bolts and attaching bolts are needed along with the wall mounting bracket. Refer the image given below:

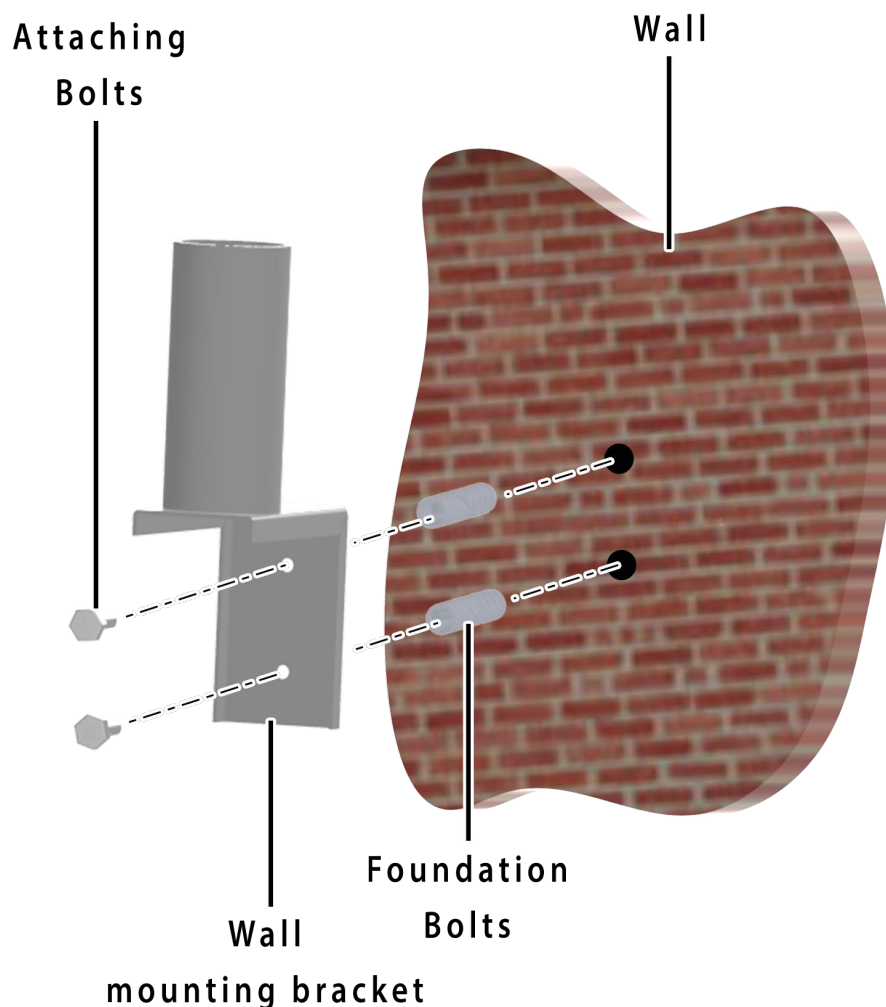


Figure 76: Items needed for wall mounting of the device

Follow the steps given below and mount the device onto the wall:

1. Take the reference from the printed sheet provided along with the wall mounting bracket and mark the position of the holes on the wall.
2. Use the drill machine to drill 2 holes with a 6mm drill tool on respective marked positions.
3. Push the foundation bolts into the holes with a hammer.
4. Align the drilled holes with the holes of wall mounting bracket.
5. Insert the attaching bolts through the holes of mounting bracket into the wall.
6. Wall mounting bracket is fixed to the wall.
7. Mount the device on to the wall mounting bracket as discussed in pole mounting process.



Figure 77: Basic overview of wall mounted 2x2 outdoor AP

21.3 Grounding of AP

The AP should be properly grounded upon installment. The IO's 2x2 outdoor AP has a grounding position at the back side of the device as shown below:

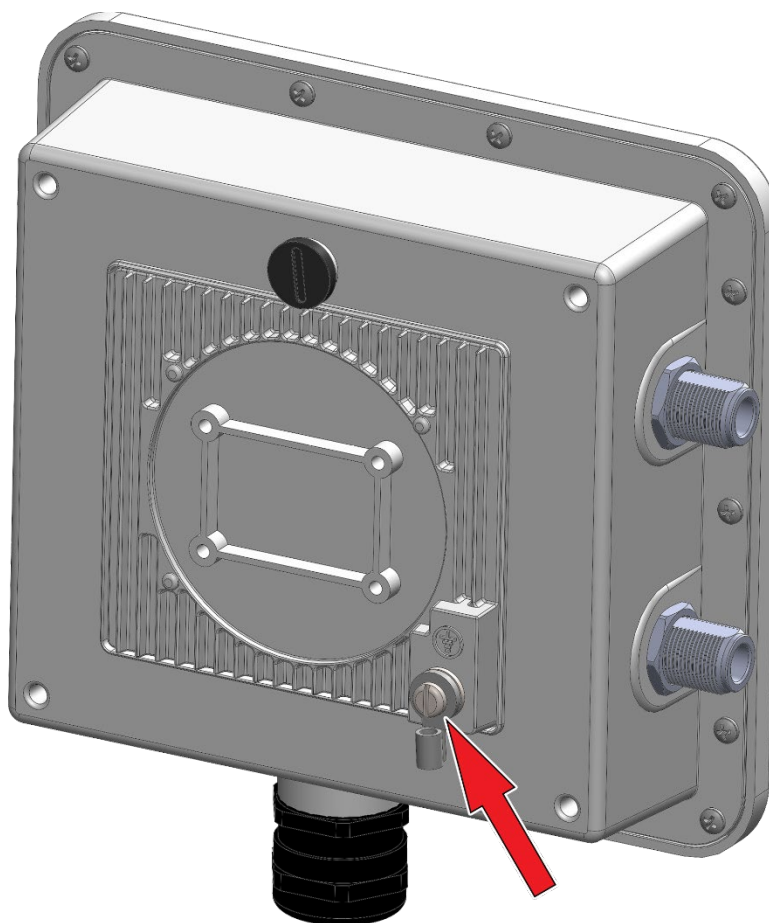


Figure 78: Grounding point of 2x2 outdoor AP

A grounding strap can be made from the ring lug terminal of M4 size and a medium length copper wire of suggested gauge AWG-6 (4.1 mm).

Insert the grounding wire and flush it till the end of the terminal. Use the crimp tool and reshape or compress the terminal. Use an M4x10 machine screw and attach the crimped lug with AP.

22 Use Cases

A. Indoor Access Point

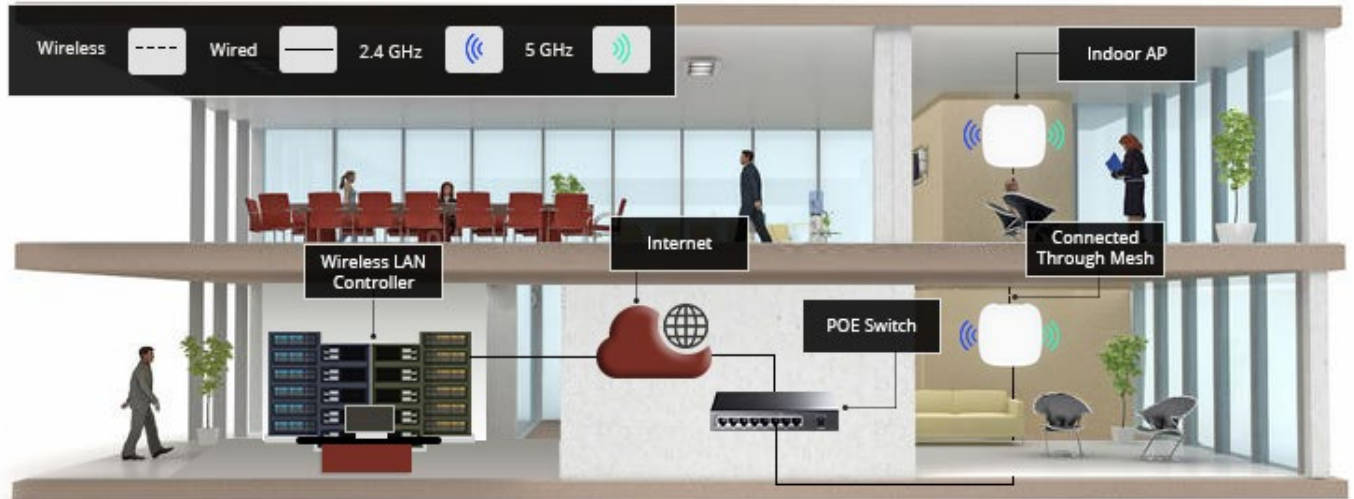


Figure 79: Use Case Diagram of Indoor AP

B. Outdoor Access Point

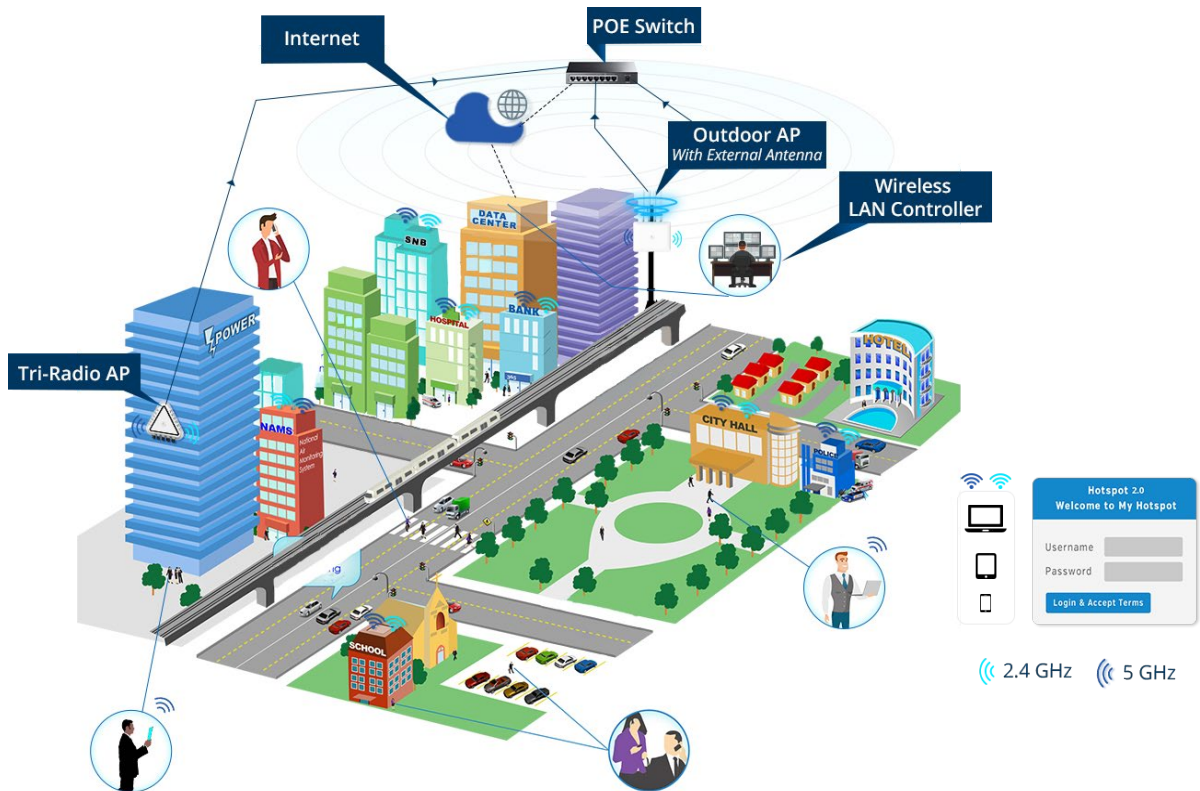


Figure 80: Use Case Diagram of Outdoor AP