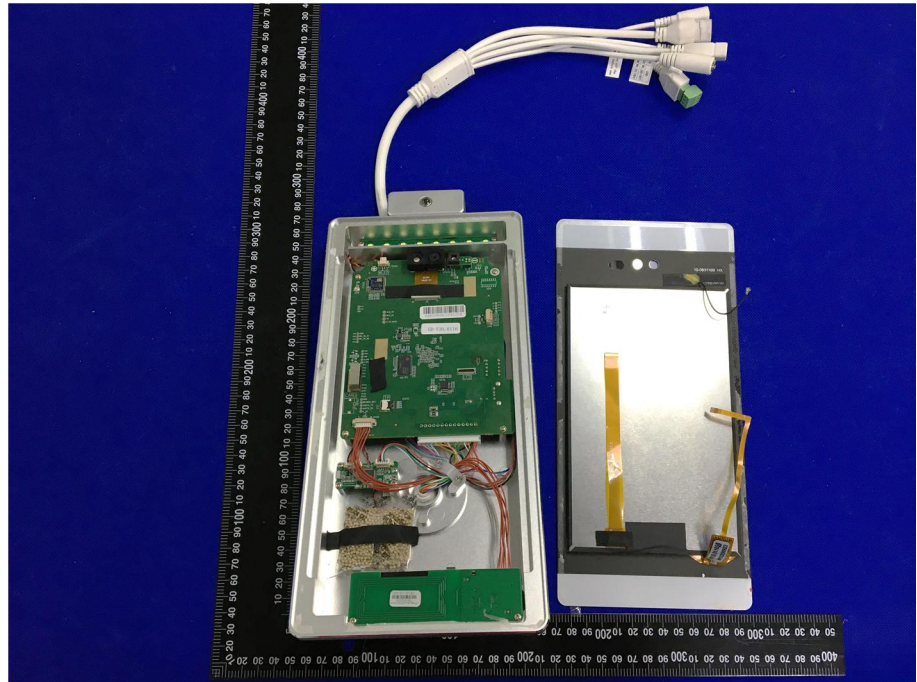
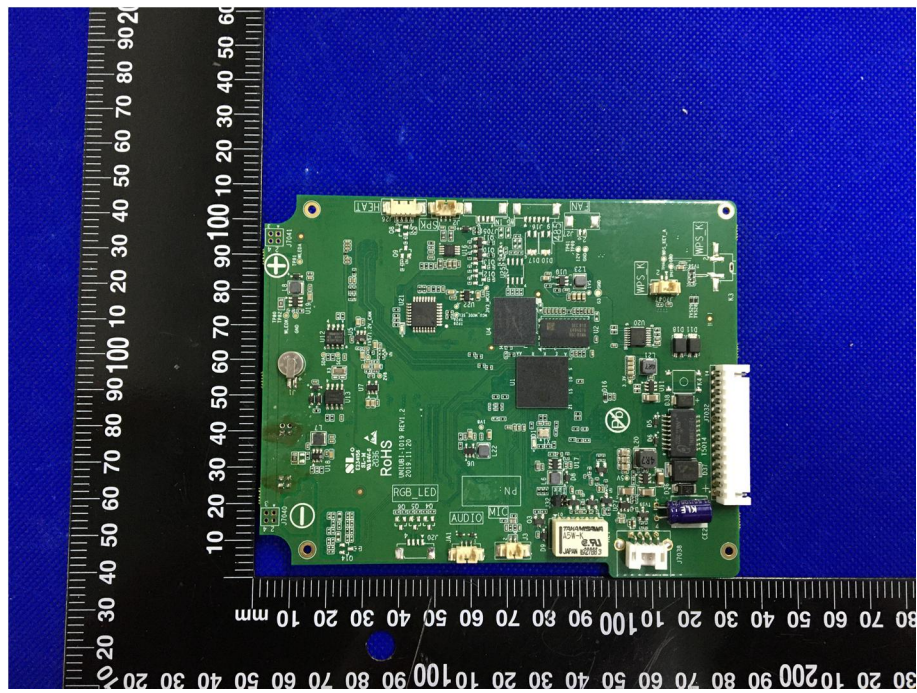


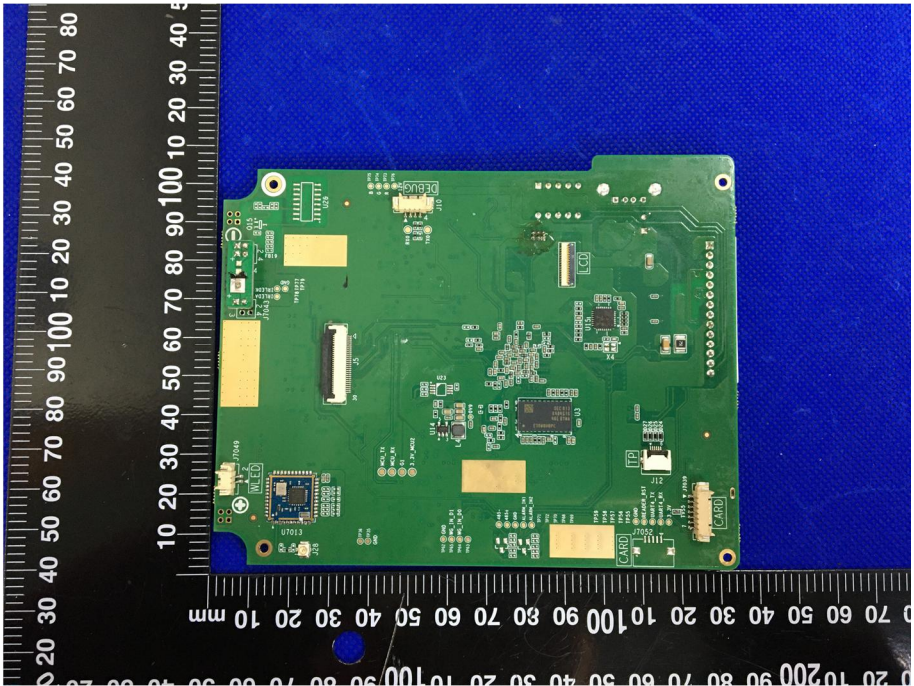
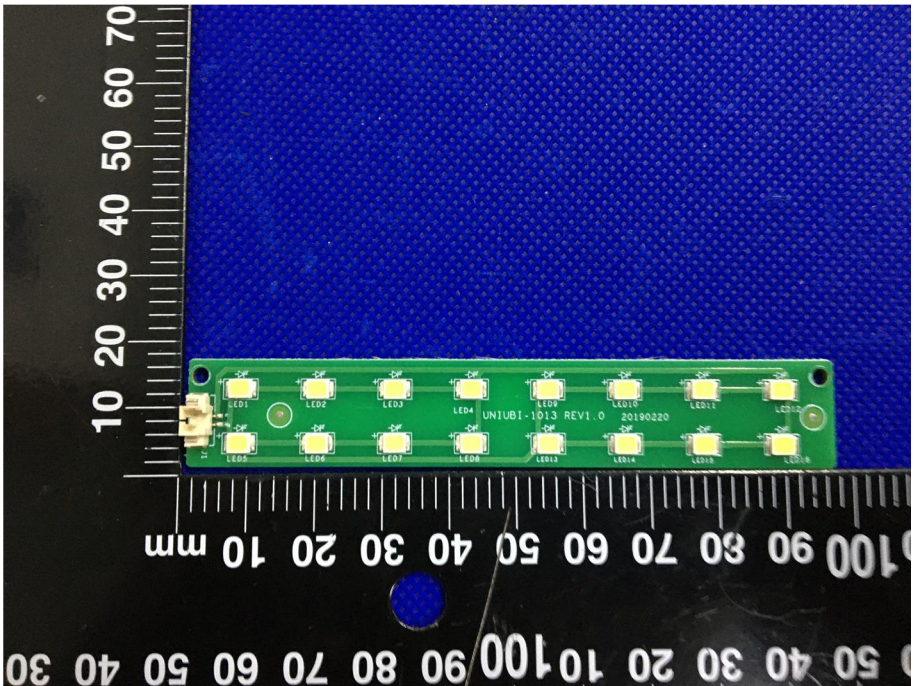
### EXHIBIT 3 - EUT INTERNAL PHOTOGRAPHS

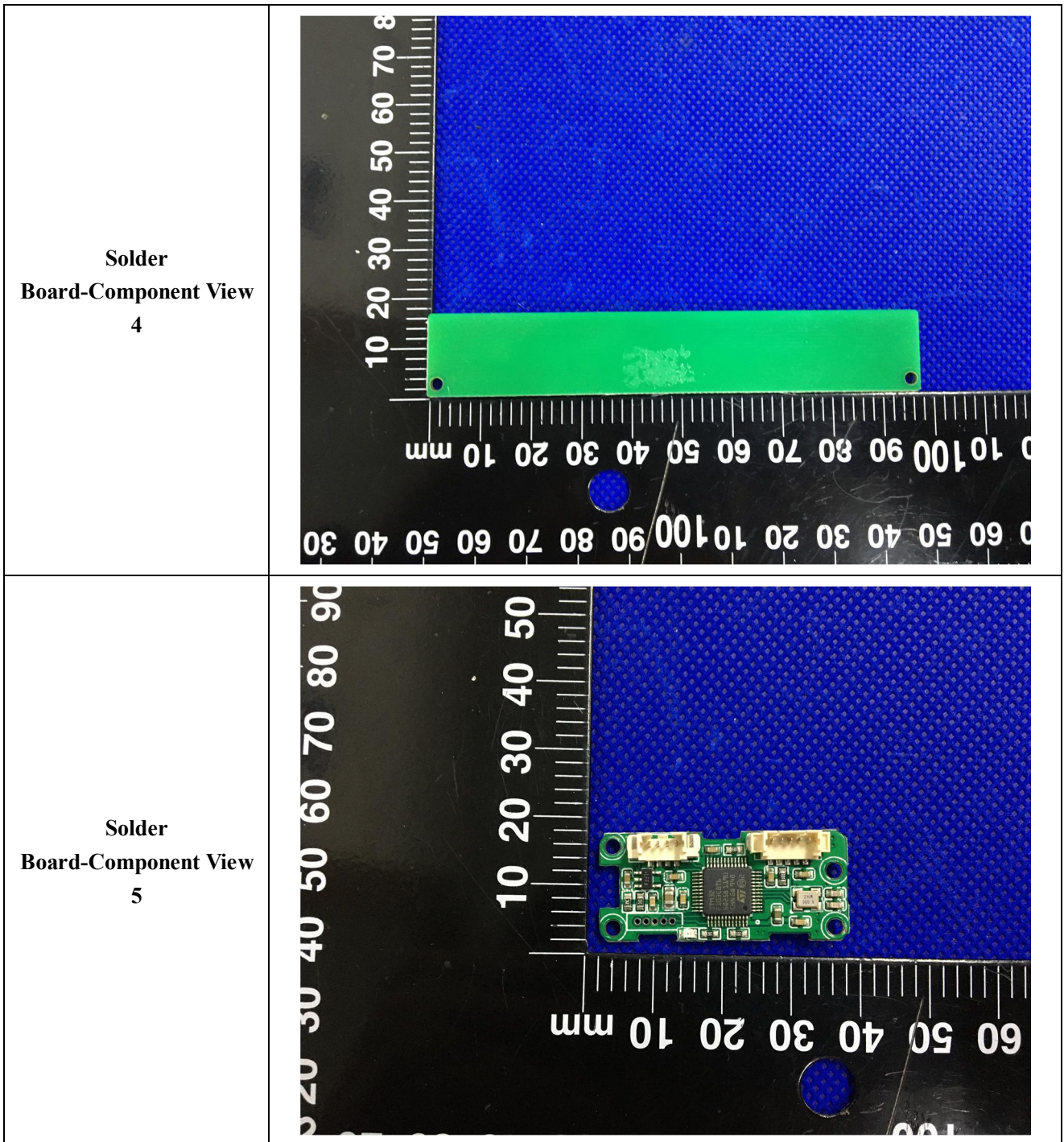
**EUT Housing and Board  
View 1**

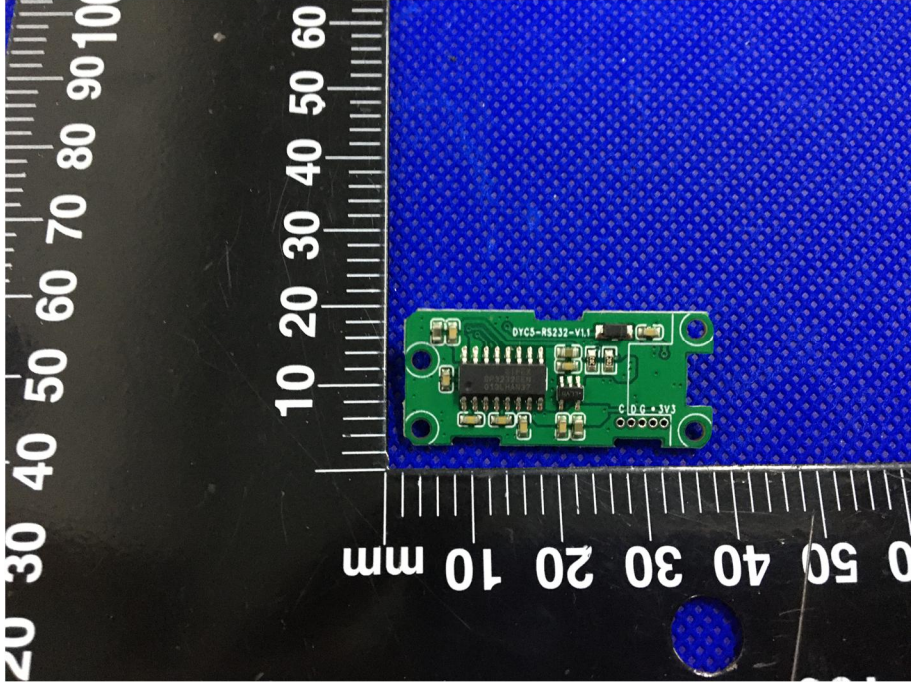
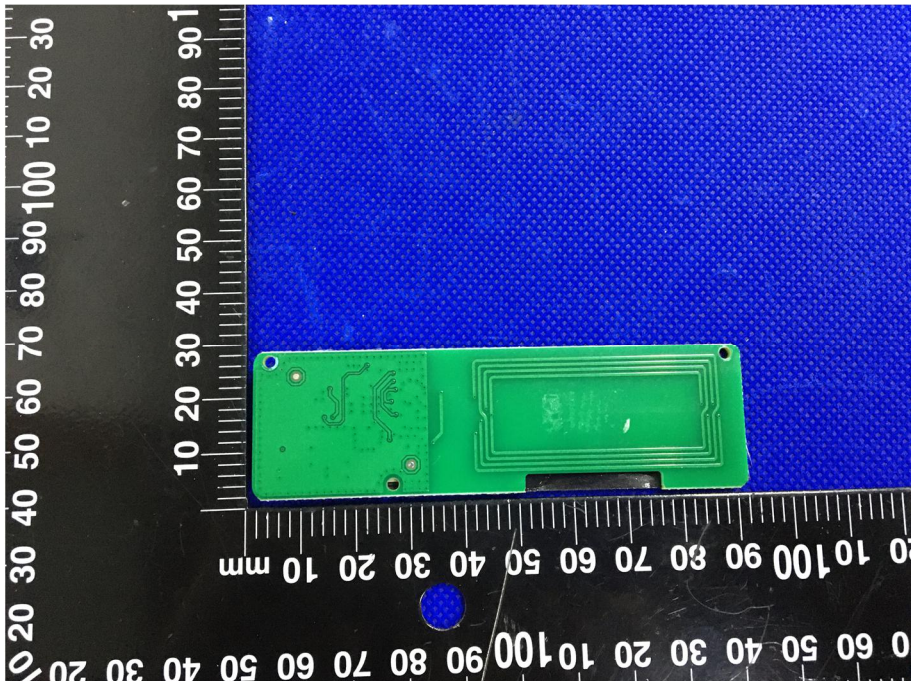


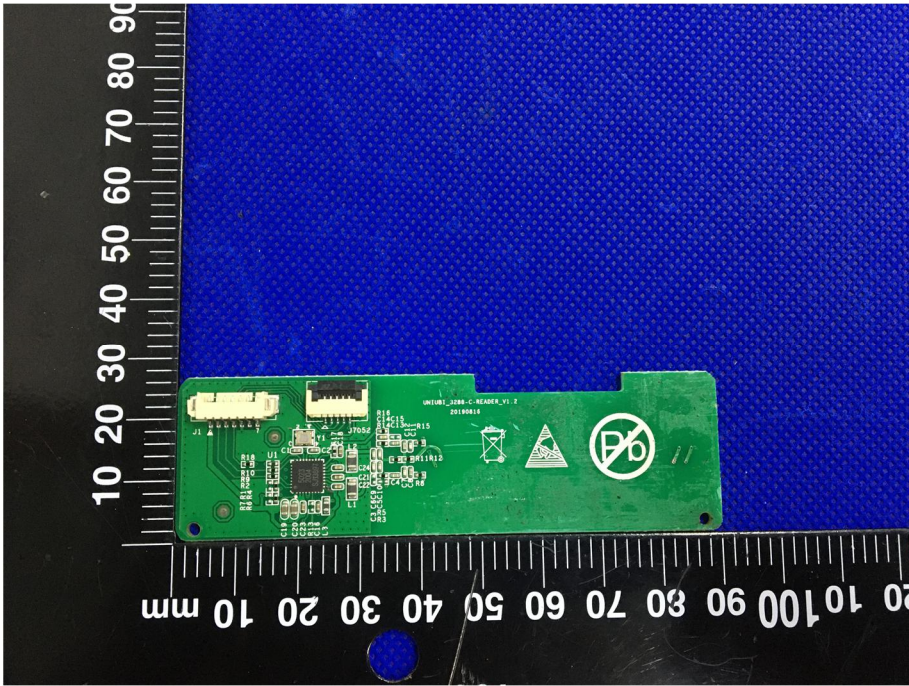
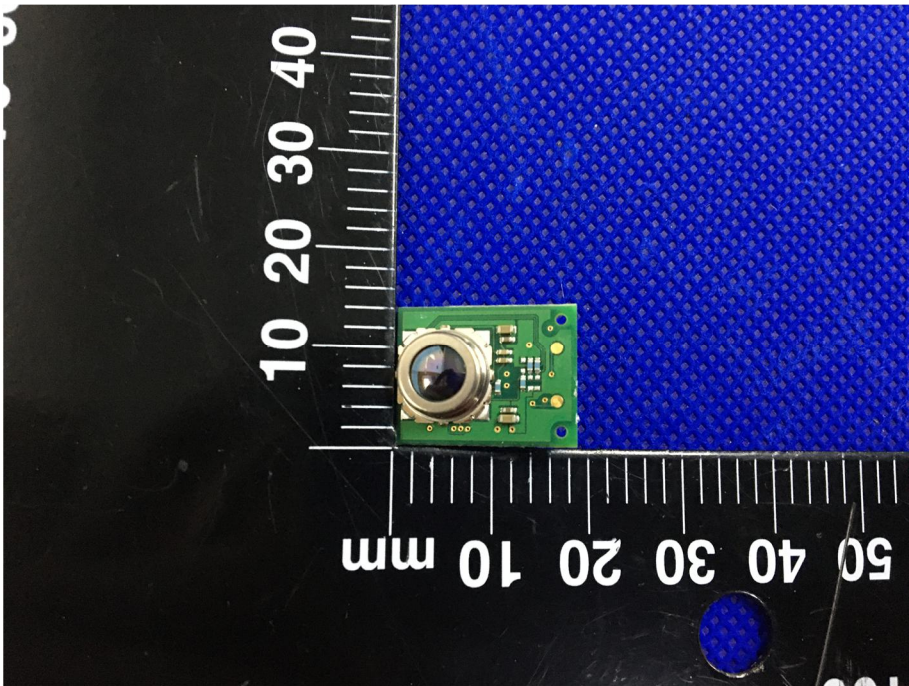
**Solder  
Board-Component View  
1**

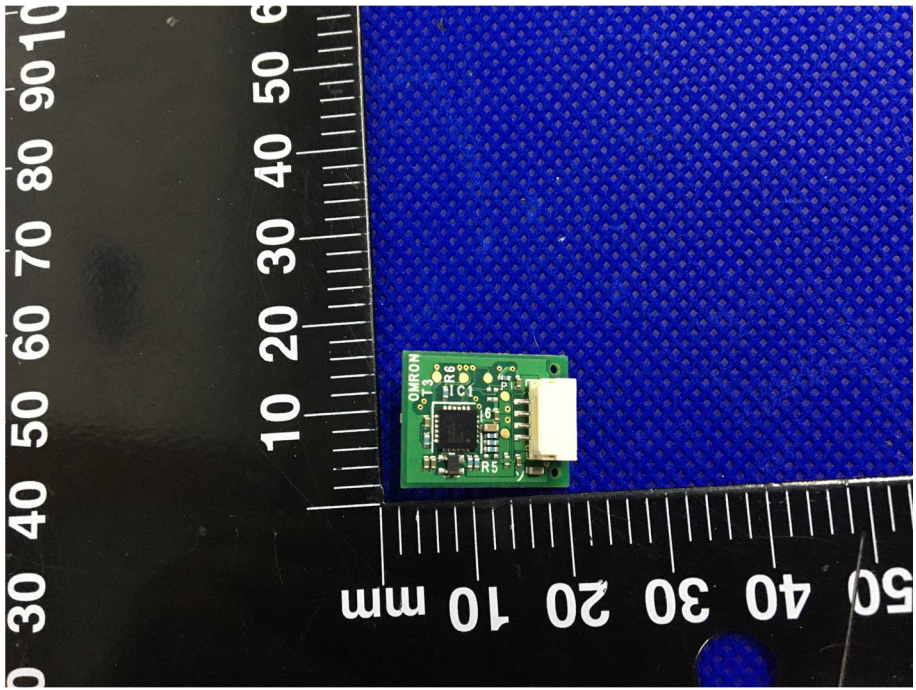
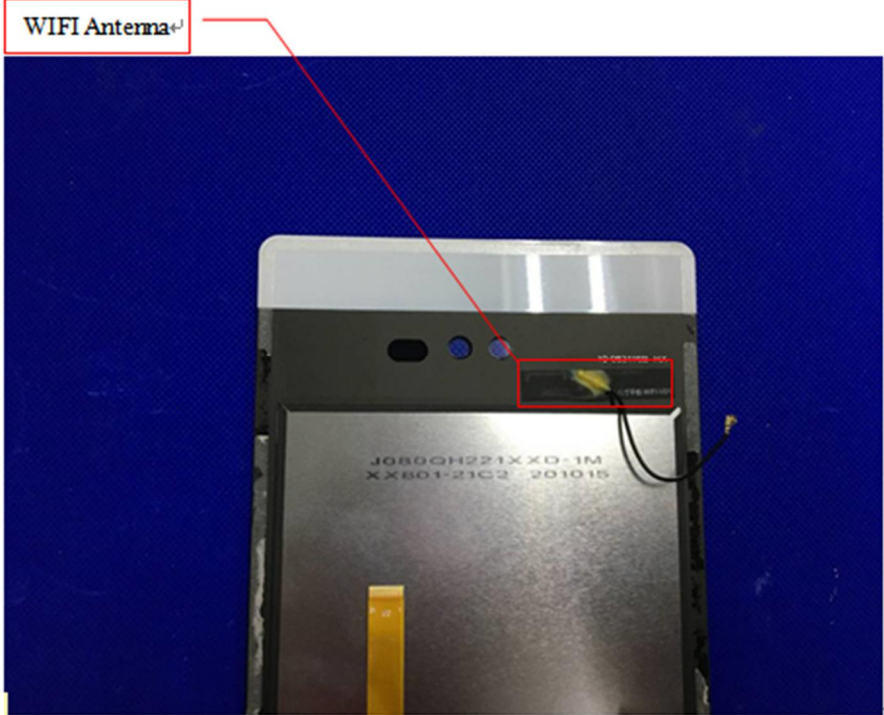


|   |   |
|---|---|
| <p style="text-align: center;"><b>Solder<br/>Board-Component View<br/>2</b></p> |  A photograph of a green printed circuit board (PCB) with various electronic components. The board is oriented vertically and is placed on a blue textured surface. A black ruler with white markings is positioned to the left of the board, showing measurements in millimeters from 0 to 100. The board features several integrated circuits, resistors, capacitors, and connectors. A prominent component is a large, square, gold-colored chip. The board has four mounting holes, one in each corner. |
| <p style="text-align: center;"><b>Solder<br/>Board-Component View<br/>3</b></p> |  A photograph of a green PCB strip with a row of eight yellow LEDs. The strip is oriented horizontally and is placed on a blue textured surface. A black ruler with white markings is positioned below the strip, showing measurements in millimeters from 0 to 100. The LEDs are labeled with part numbers: LED1 through LED8. The PCB strip has a gold-colored connector on the left end and a circular hole on the right end. The text "UNIBI-1011 REV1.0" and "02090105" is visible on the board.      |



|   |   |
|---|---|
| <p style="text-align: center;"><b>Solder<br/>Board-Component View<br/>6</b></p> |  <p>A photograph of a small green printed circuit board (PCB) component. The board is rectangular and populated with several surface-mount components, including a central integrated circuit (IC) and several smaller passive components. The board is placed on a black surface with a white ruler for scale. The ruler shows measurements in millimeters, with the component spanning approximately 40 mm in length and 15 mm in width. The background is a blue textured surface. The text 'DYCS-RS232-V1.1' and 'C.D.G. 3V3' are visible on the board.</p> |
| <p style="text-align: center;"><b>Solder<br/>Board-Component View<br/>7</b></p> |  <p>A photograph of a larger green PCB component. The board is rectangular and features a large, complex integrated circuit (IC) in the center. The board is placed on a black surface with a white ruler for scale. The ruler shows measurements in millimeters, with the component spanning approximately 100 mm in length and 25 mm in width. The background is a blue textured surface.</p>  |

|   |  |
|---|--|
| <p><b>Solder<br/>Board-Component View<br/>8</b></p> |  <p>A photograph of a green printed circuit board (PCB) component, labeled 'Solder Board-Component View 8'. The component is rectangular and features various electronic components, including a central microcontroller, several resistors, and a connector on the left side. It is placed on a blue textured background. A black ruler with white markings is positioned vertically to the left of the component, showing measurements from 10 to 90 mm. A horizontal ruler at the bottom shows measurements from 10 to 100 mm. The PCB has several markings, including 'UNIT01_2008-C-HEADER_V1.2' and a 'Pb' symbol with a diagonal slash through it, indicating lead-free solder.</p> |
| <p><b>Solder<br/>Board-Component View<br/>9</b></p> |  <p>A photograph of a green PCB component, labeled 'Solder Board-Component View 9'. This component is smaller and features a prominent circular lens or sensor in the center. It is placed on a blue textured background. A black ruler with white markings is positioned vertically to the left of the component, showing measurements from 10 to 40 mm. A horizontal ruler at the bottom shows measurements from 10 to 50 mm.</p>   |

|  |   |
|--|---|
| <p style="text-align: center;"><b>Solder<br/>Board-Component View<br/>10</b></p> |  <p>A photograph showing a small green printed circuit board (PCB) component mounted on a blue textured surface. The component is positioned next to a black ruler with white markings. The ruler shows measurements in millimeters, with the component's length being approximately 15 mm. The component has several surface components, including a large chip labeled 'OMRON' and other smaller components labeled 'R6', 'C1', 'R5', and 'P1'. A white rectangular component is also visible on the right side of the PCB.</p> |
| <p style="text-align: center;"><b>Antenna View</b></p>                           |  <p>A photograph showing the back of a mobile phone. The phone is silver and black. A red box highlights a small black component on the back of the phone, which is labeled 'WIFI Antenna' with a red arrow pointing to it. The phone's model number 'J080GH221X XD-1M' and 'X801-21C2 201015' are visible on the back cover. A yellow antenna cable is connected to the antenna component.</p>  |

**Antenna View**

