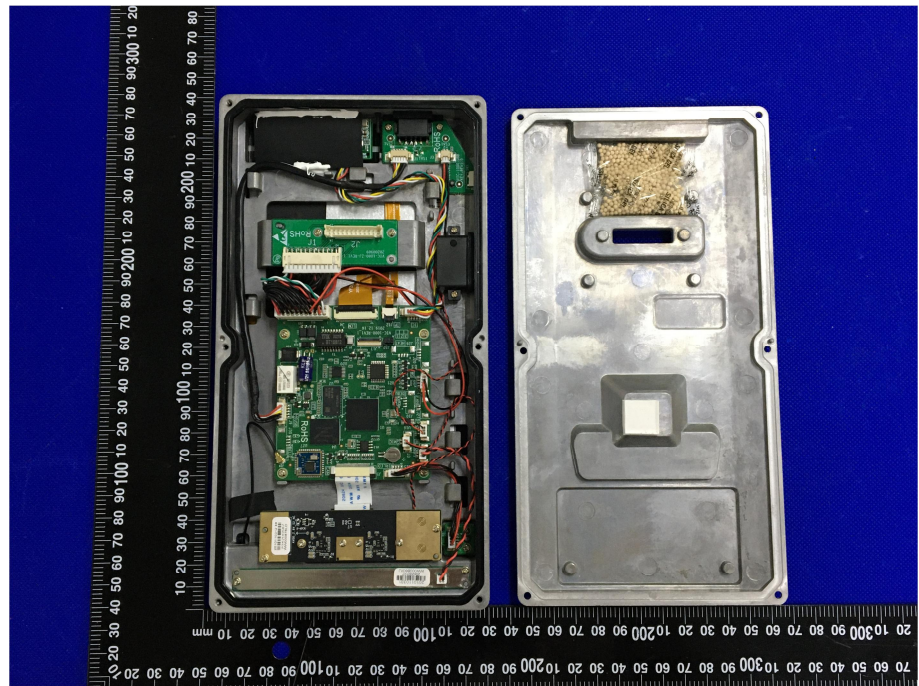
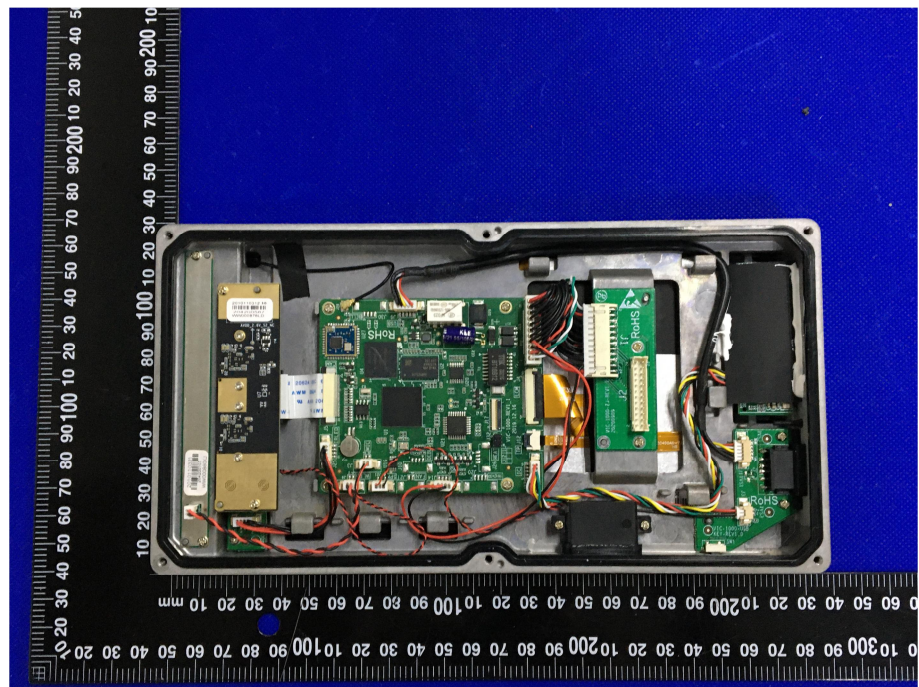


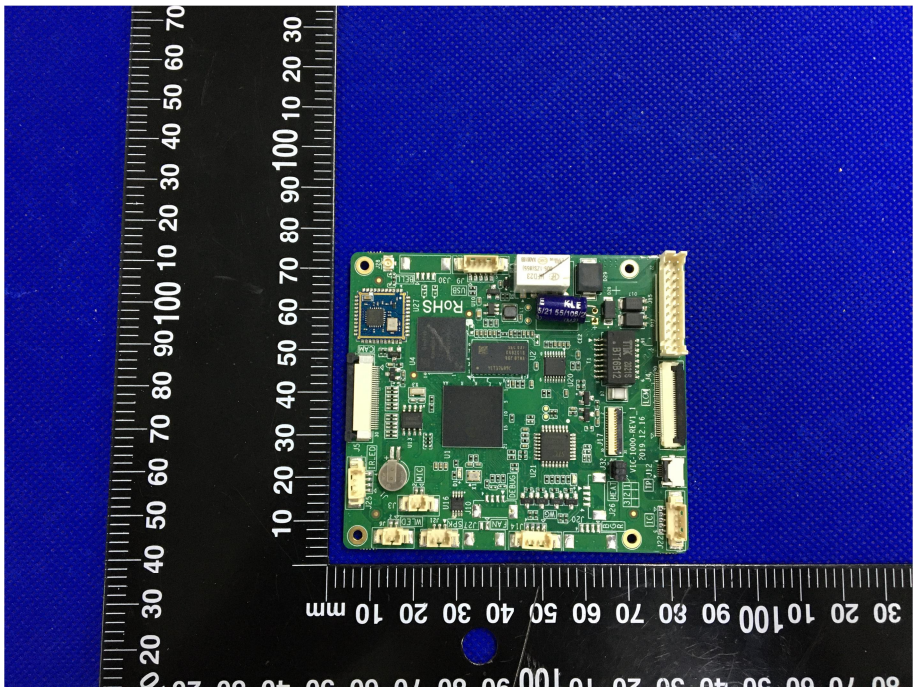
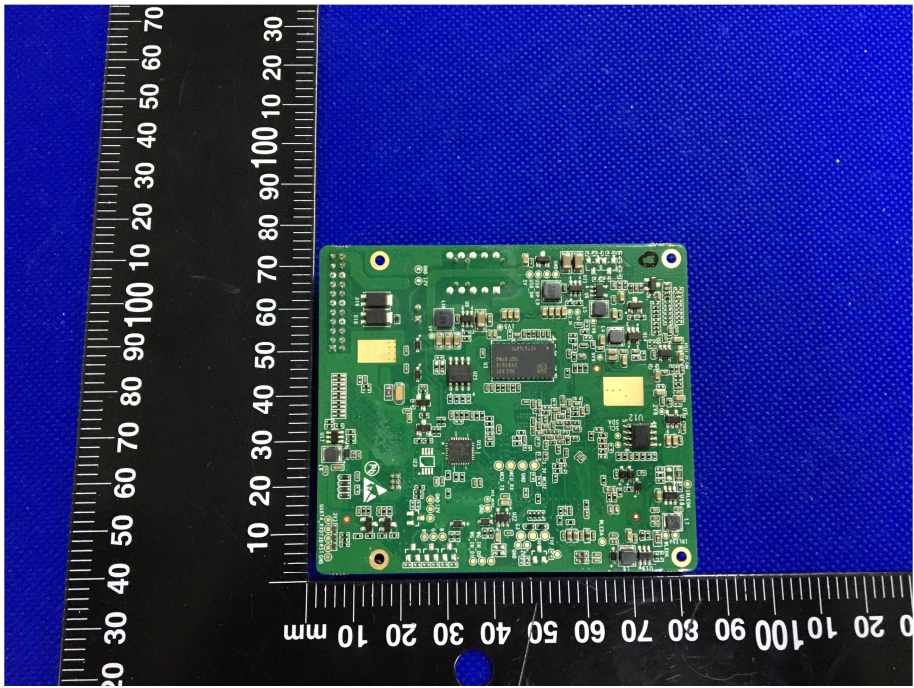
EXHIBIT 3 - EUT INTERNAL PHOTOGRAPHS

**EUT Housing and Board
View 1**



**EUT Housing and Board
View 2**



<p style="text-align: center;">Solder Board-Component View 1</p>	 A photograph of a green printed circuit board (PCB) with various electronic components. The board is oriented vertically and is placed on a blue textured background. A black ruler with white markings is positioned to the left of the board, showing measurements in millimeters. The board features several integrated circuits, including a large black chip with 'ROHS' printed on it, and various smaller components like resistors and capacitors. There are also some connectors and a small white component at the top.
<p style="text-align: center;">Solder Board-Component View 2</p>	 A photograph of the same green PCB from a different perspective. The board is oriented horizontally. A black ruler with white markings is positioned to the left of the board, showing measurements in millimeters. The board is densely packed with components, including a large central chip, numerous smaller components, and several connectors along the edges. The background is the same blue textured surface.

