


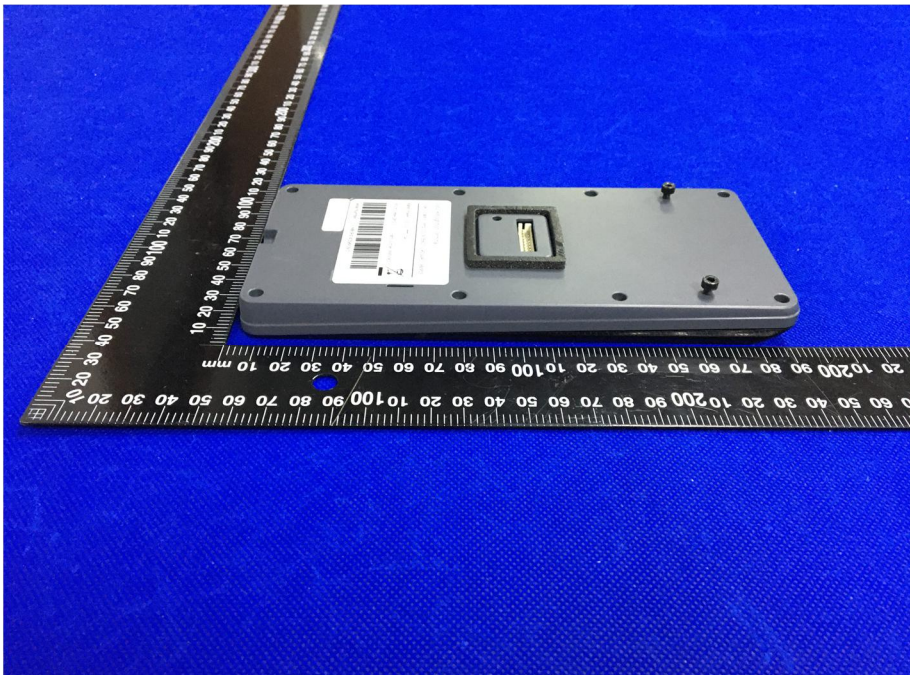
## EXHIBIT 2 - EUT EXTERNAL PHOTOGRAPHS

**EUT View 1**

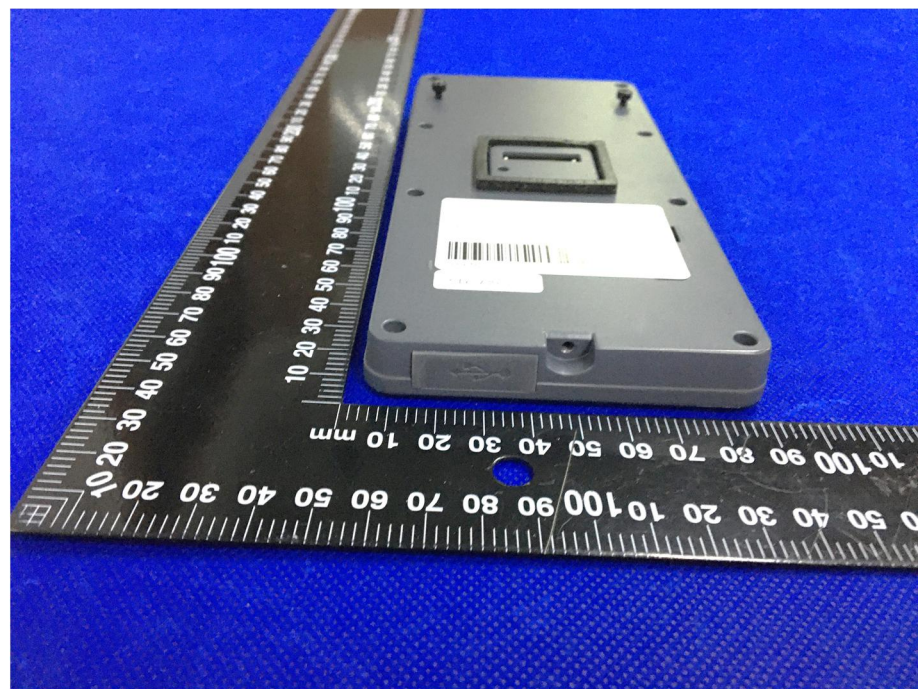


**EUT View 2**

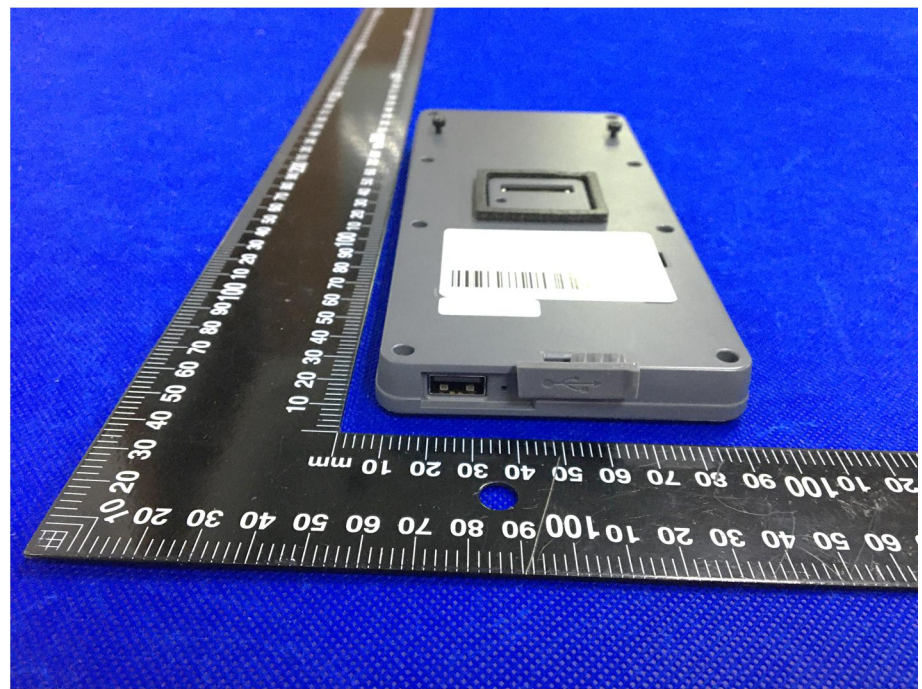


<p><b>EUT View 3</b></p>	 A photograph showing the back view of a grey rectangular device. A black ruler is placed vertically to the left of the device, with markings from 0 to 100 mm. The device has a central gold-colored connector. A white label is affixed to the back, containing the following text: "Face Recognition Terminal", "Type: WTX20X11090589W-1/2", "Model Number: WTX20X11090589W-1/2", "Barcode", and "CD-V905116".
<p><b>EUT View 4</b></p>	 A photograph showing the side view of the same grey rectangular device. A black ruler is placed horizontally below the device, with markings from 0 to 100 mm. The device is oriented vertically in the image.

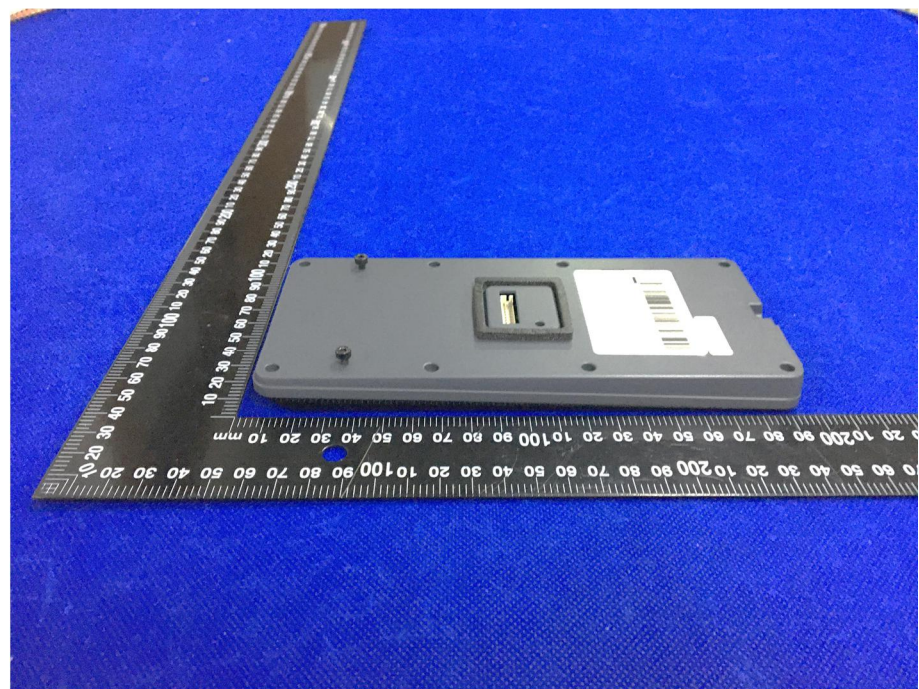
**EUT View 5**



**EUT View 6**



**EUT View 7**



**EUT View 8**

