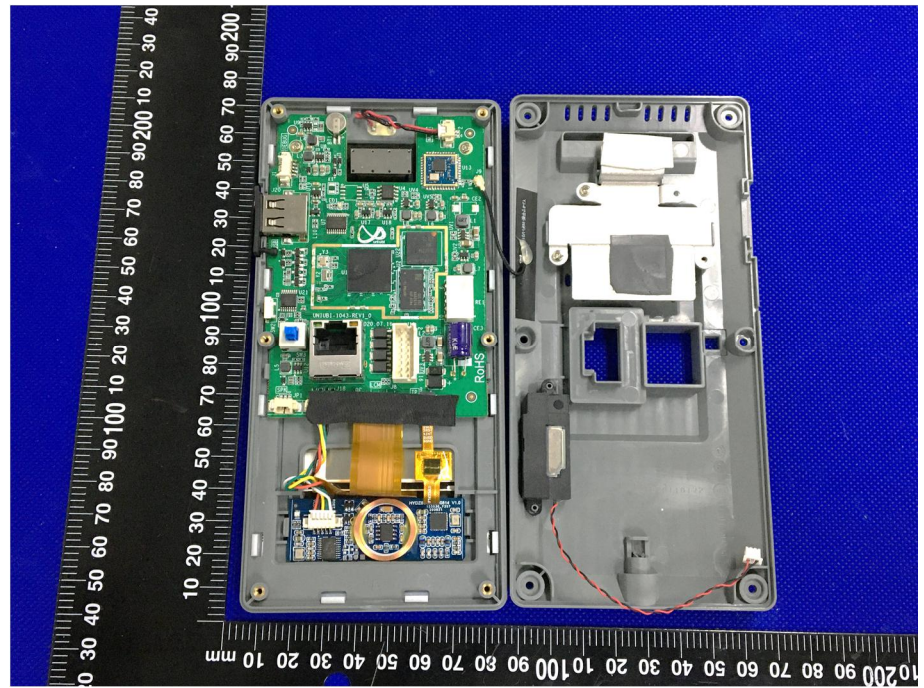


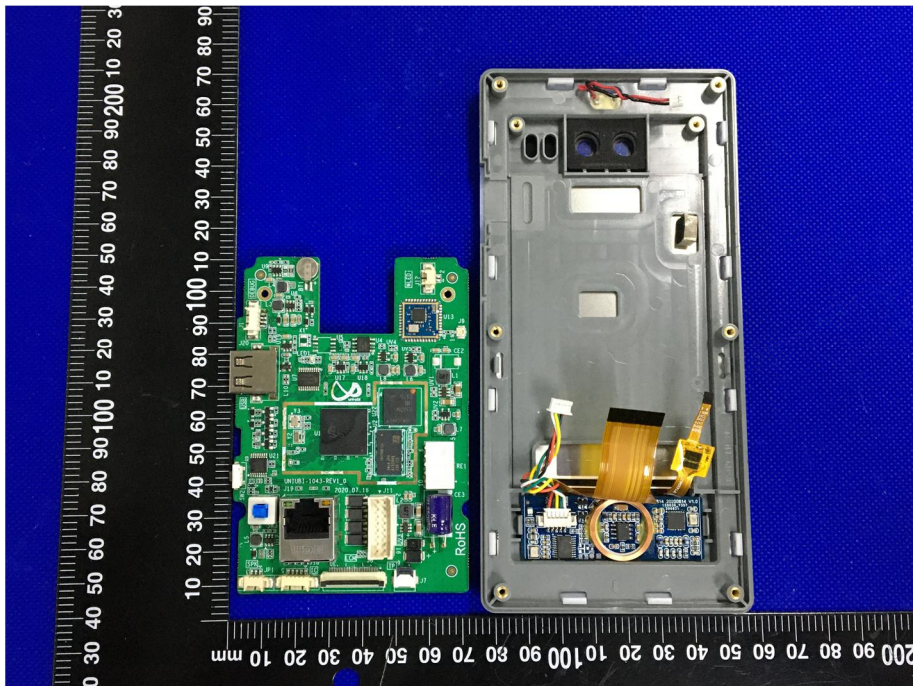
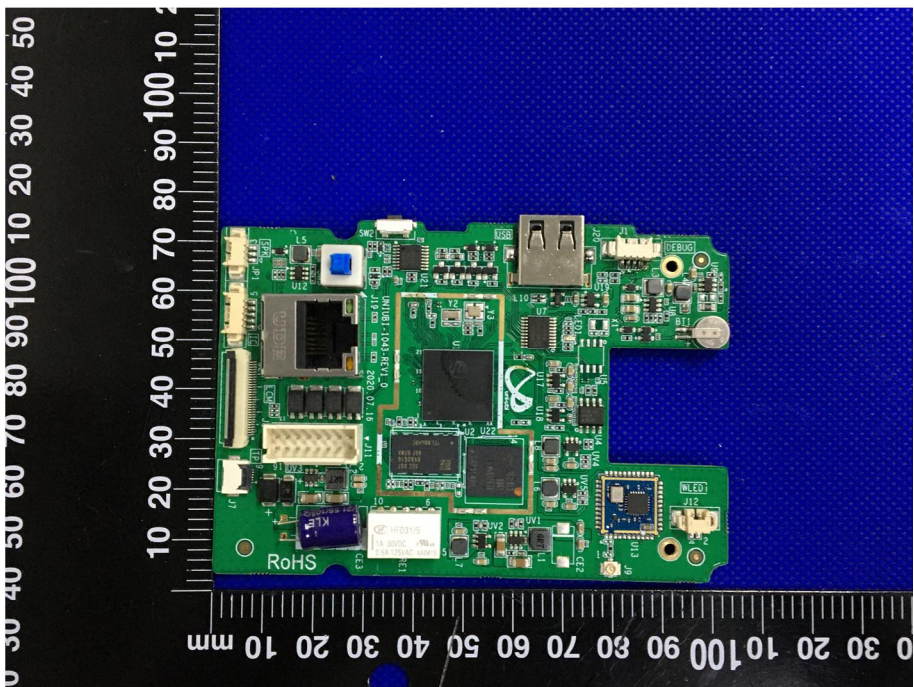
EXHIBIT 3 - EUT INTERNAL PHOTOGRAPHS

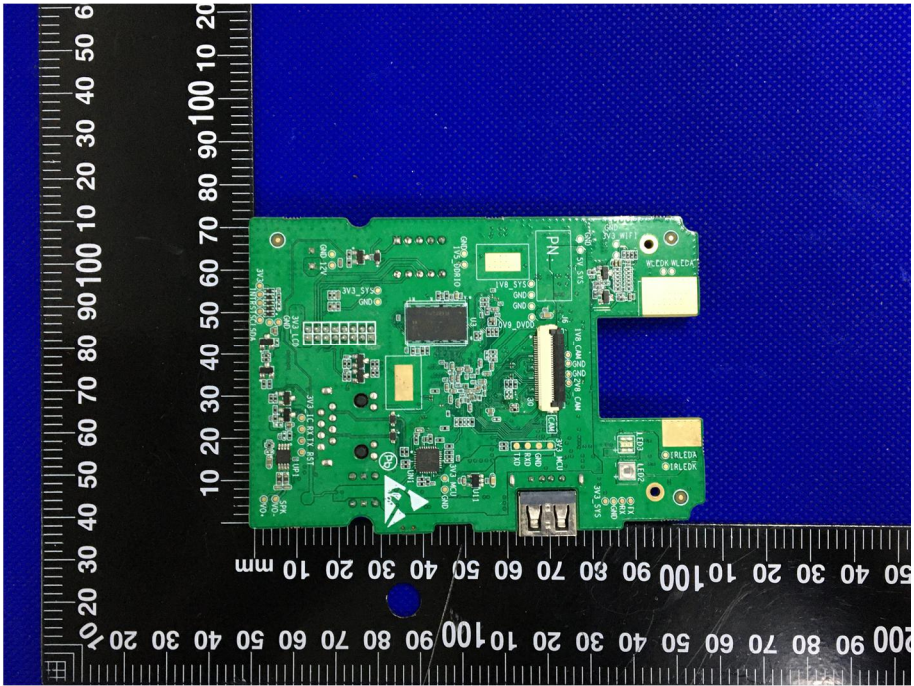
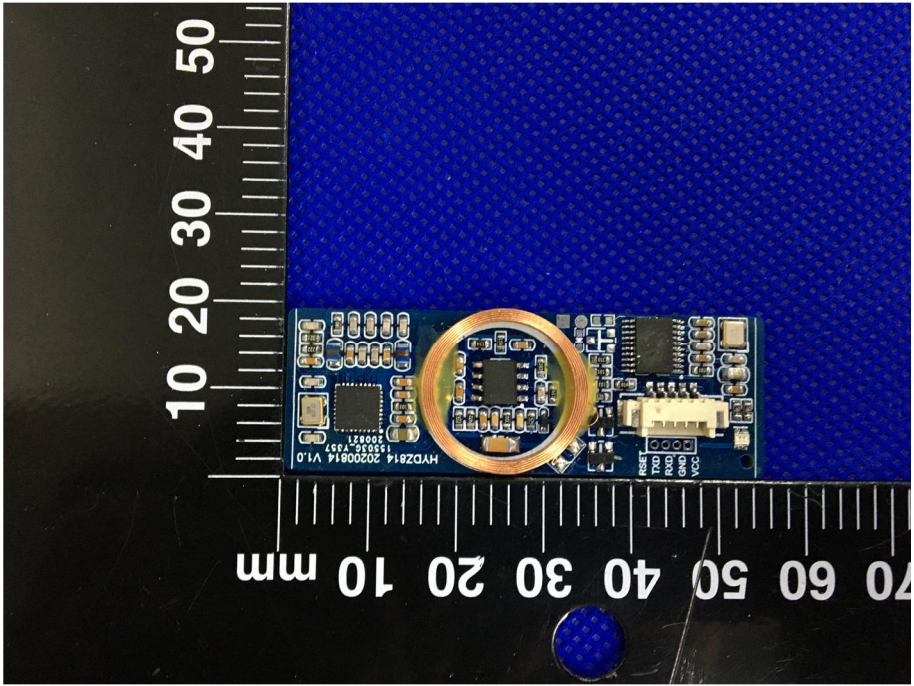
**EUT Housing and Board
View 1**

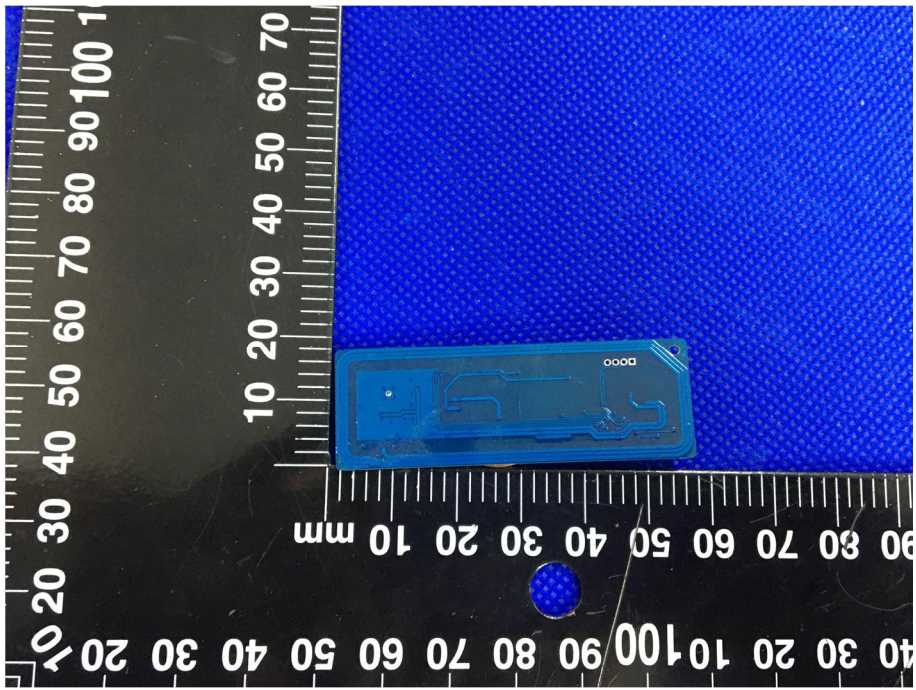
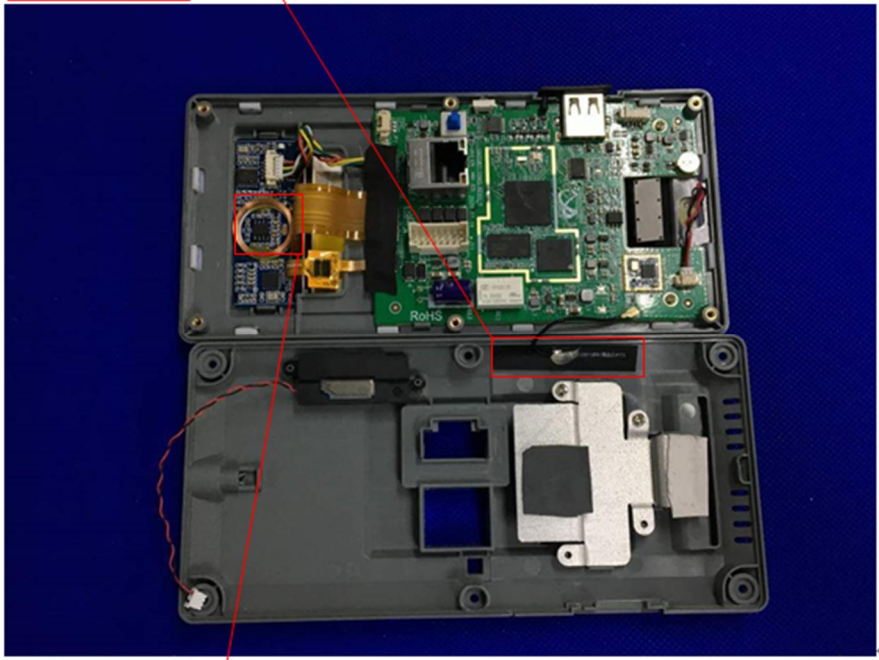


**EUT Housing and Board
View 2**



<p>EUT Housing and Board View 3</p>	
<p>Solder Board-Component View 1</p>	

<p style="text-align: center;">Solder Board-Component View 2</p>	 <p>A photograph of a green printed circuit board (PCB) component. The board is rectangular with several integrated circuits, resistors, and other electronic components. It features a USB-A port on the right side and a multi-pin connector on the left. The board is placed on a blue textured surface next to a white ruler with black markings. The ruler shows measurements in millimeters, with the board's length being approximately 100 mm and its width around 60 mm.</p>
<p style="text-align: center;">Solder Board-Component View 3</p>	 <p>A photograph of a blue PCB component. The board is rectangular and populated with various electronic components, including a large central chip and several smaller components. A prominent feature is a circular gold-colored ring or pad in the center. The board is placed on a blue textured surface next to a white ruler with black markings. The ruler shows measurements in millimeters, with the board's length being approximately 50 mm and its width around 40 mm.</p>

<p style="text-align: center;">Solder Board-Component View 4</p>	 <p>A photograph of a blue solder board component. The component is rectangular with a complex circuit pattern. It is placed on a black surface with a white ruler for scale. The ruler shows measurements in millimeters, with markings every 10 mm and sub-markings every 1 mm. The component is positioned between the 10 mm and 70 mm marks on the ruler. The background is a blue textured surface.</p>
<p style="text-align: center;">Antenna View</p>	 <p>A photograph showing the internal components of a device, including the main board and antenna components. The device is shown in two parts: the top part is the main board with various components, and the bottom part is the antenna assembly. Red boxes and lines highlight specific components: a box labeled "WIFI Antenna" points to a component on the main board, and a box labeled "NFC Antenna" points to a component on the antenna assembly. The background is a blue textured surface.</p>