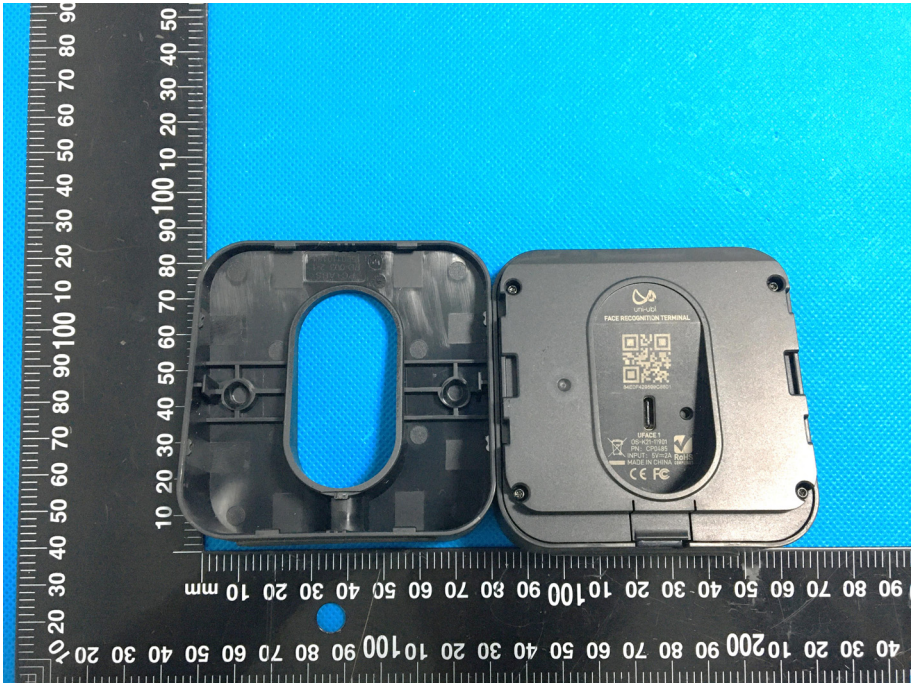

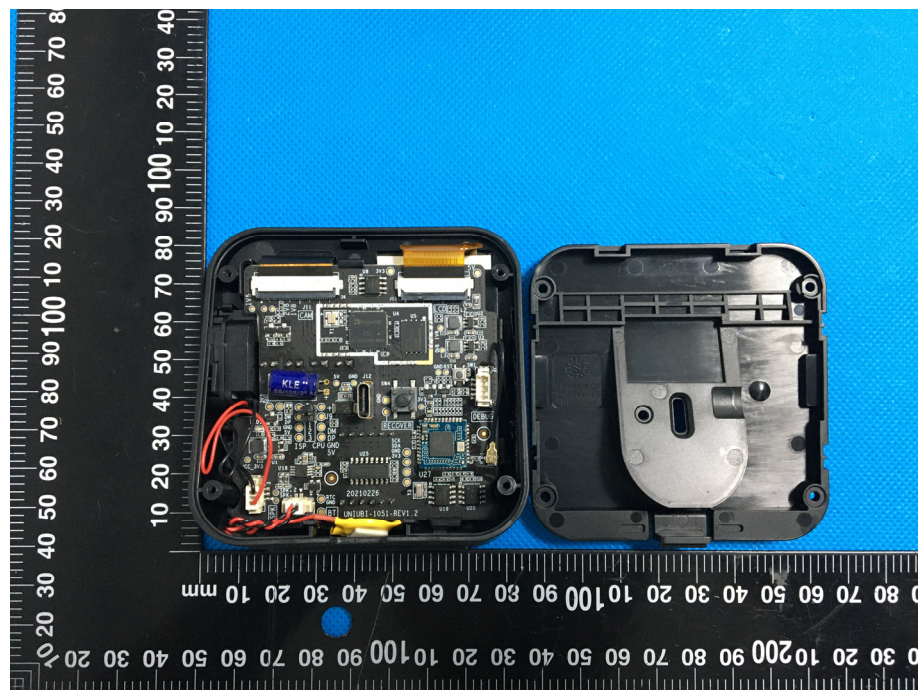


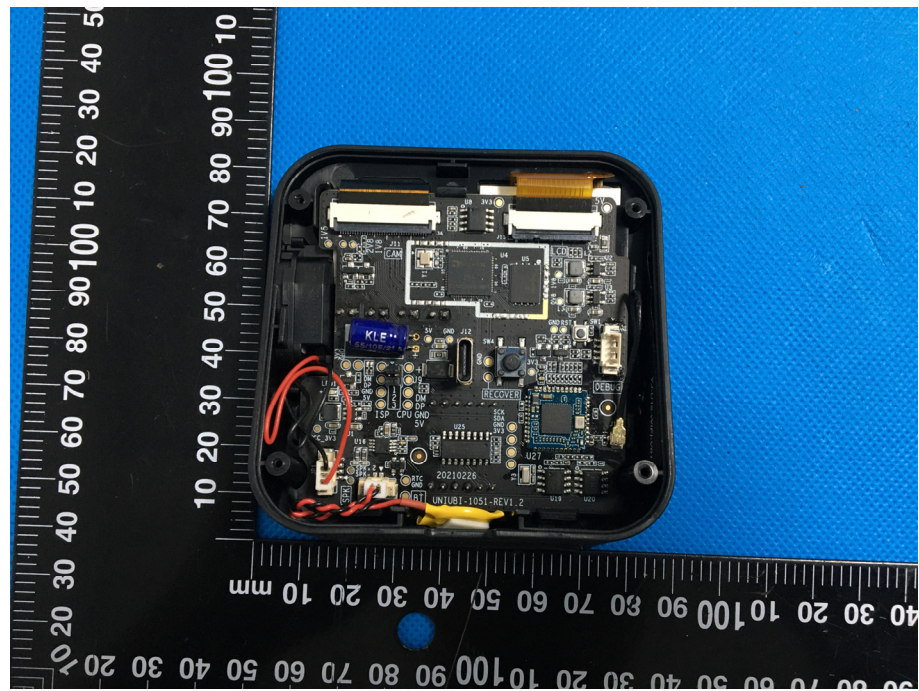
EXHIBIT 3 - EUT INTERNAL PHOTOGRAPHS

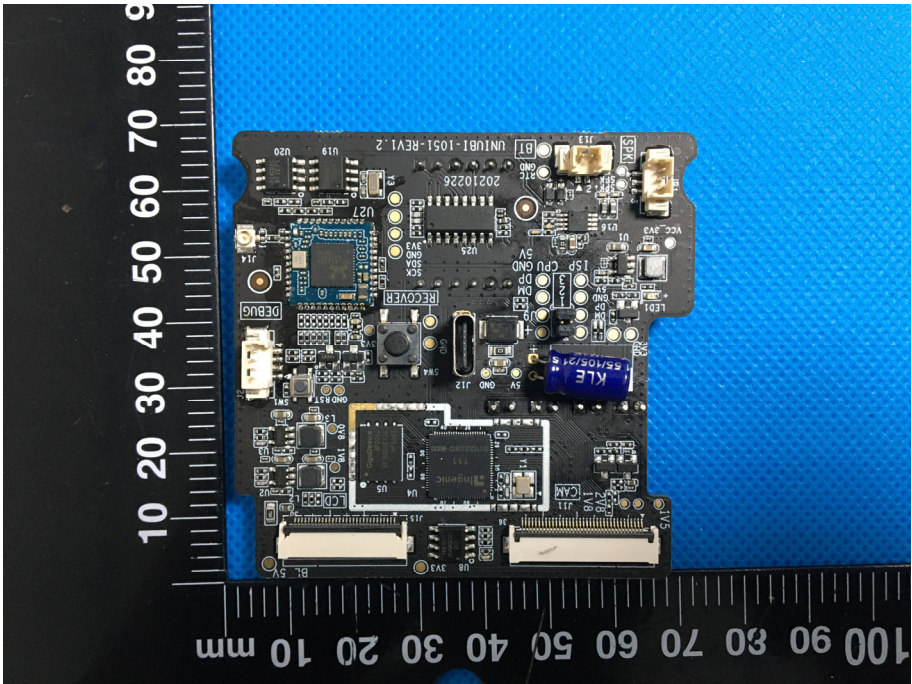
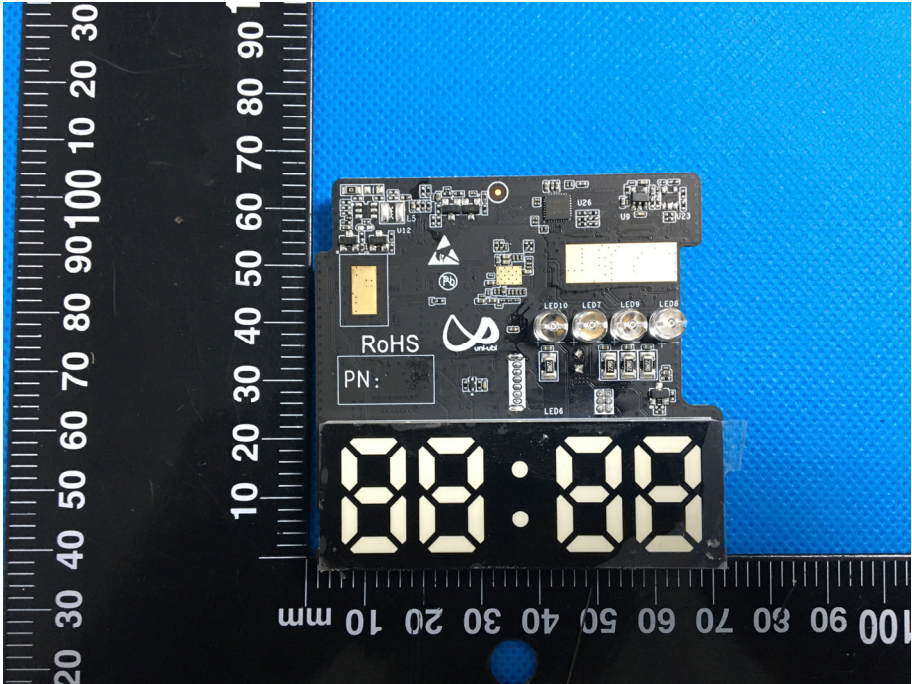
<p>EUT Housing and Board View 1</p>	
<p>EUT Housing and Board View 2</p>	

**EUT Housing and Board
View 3**



**EUT Housing and Board
View 4**



<p style="text-align: center;">Solder Board-Component View 1</p>	 <p>A photograph of a printed circuit board (PCB) assembly, labeled 'Solder Board-Component View 1'. The board is populated with various electronic components, including a central microcontroller, several integrated circuits, and connectors. A prominent blue component is labeled 'KLE 5S10S/15'. The board is placed on a blue textured background. A black ruler with white markings is positioned vertically on the left side of the board, showing measurements from 0 to 90 mm. Another ruler is positioned horizontally at the bottom of the board, showing measurements from 0 to 100 mm.</p>
<p style="text-align: center;">Solder Board-Component View 2</p>	 <p>A photograph of a printed circuit board (PCB) assembly, labeled 'Solder Board-Component View 2'. The board features a large, illuminated 7-segment display at the bottom, showing the number '88:88'. The board is populated with various components, including LEDs (labeled LED0, LED1, LED2, LED3, LED4), resistors, and other electronic parts. A 'RoHS' logo and 'PN:' are visible on the board. The board is placed on a blue textured background. A black ruler with white markings is positioned vertically on the left side of the board, showing measurements from 0 to 90 mm. Another ruler is positioned horizontally at the bottom of the board, showing measurements from 0 to 100 mm.</p>

Antenna View

