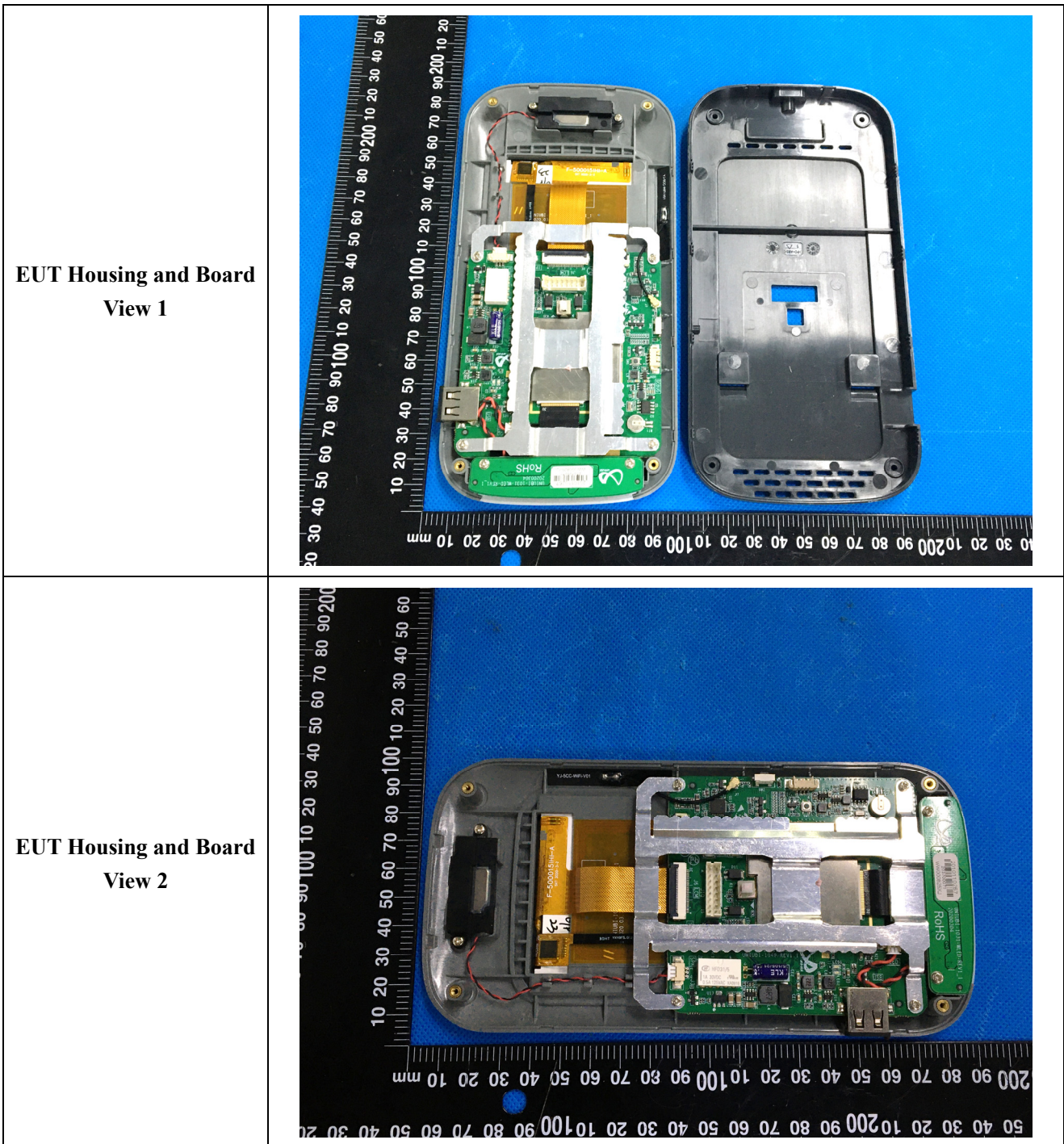
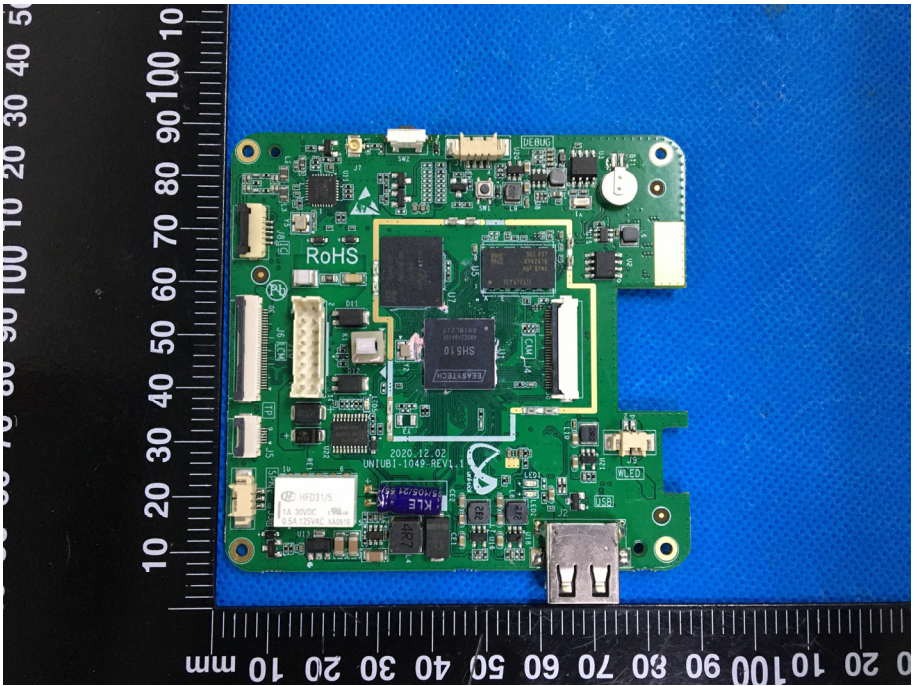

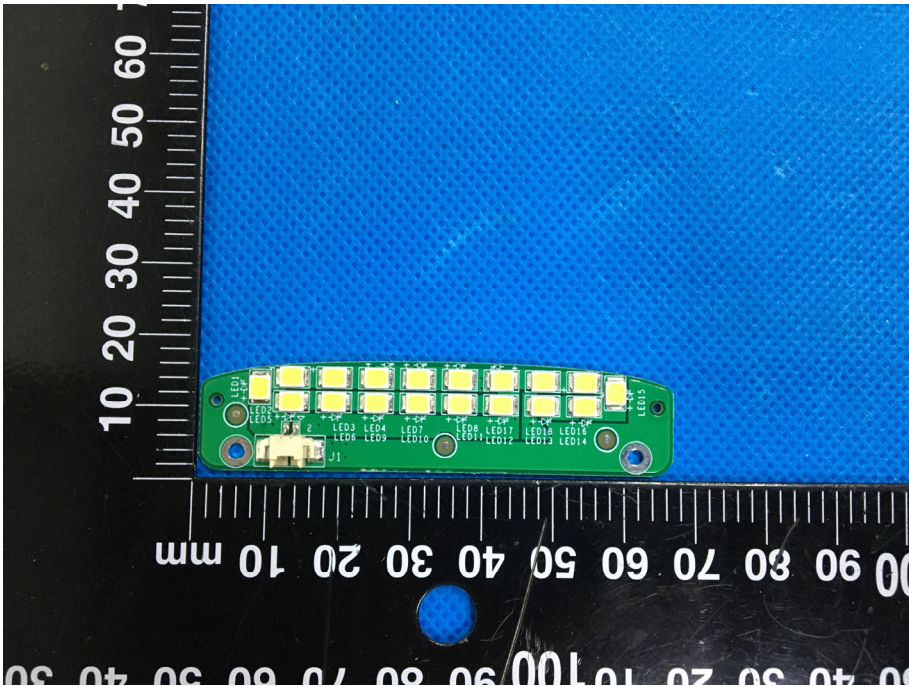
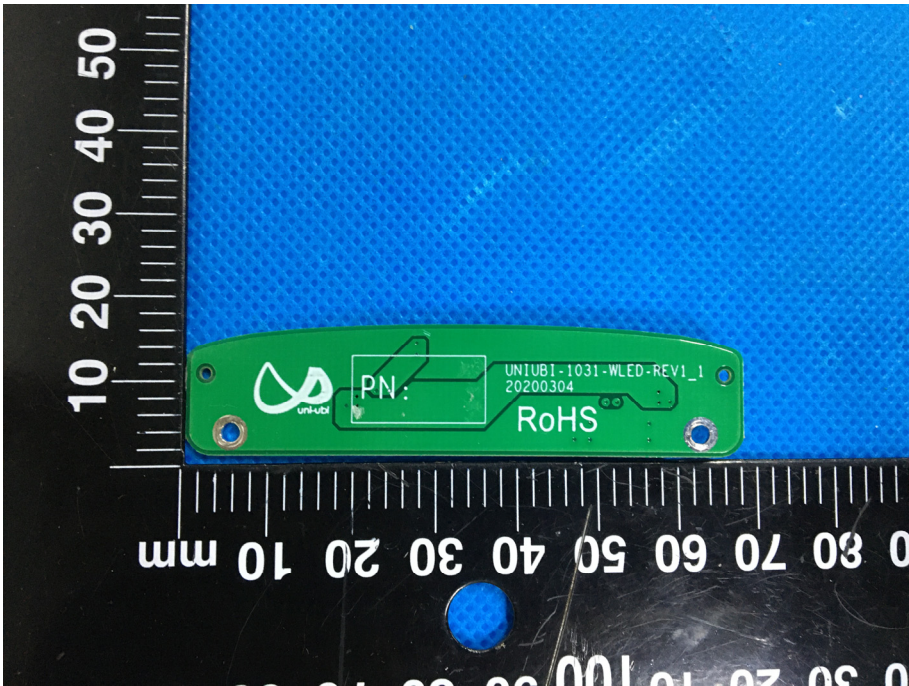


EXHIBIT 3 - EUT INTERNAL PHOTOGRAPHS



<p style="text-align: center;">Solder Board-Component View 1</p>	 <p>A photograph of a green printed circuit board (PCB) component, labeled 'Solder Board-Component View 1'. The board is oriented vertically and features a USB Type-A connector at the top. Various electronic components are visible, including a large black integrated circuit (IC) labeled 'SH510', a smaller IC labeled 'KLE', and a component labeled 'RoHS'. The board is placed on a blue textured surface next to a black ruler with white markings, showing dimensions in millimeters. The ruler is positioned to the left of the board, with markings from 0 to 100 mm visible.</p>
<p style="text-align: center;">Solder Board-Component View 2</p>	 <p>A photograph of the same green PCB component, labeled 'Solder Board-Component View 2'. This view shows the reverse side of the board, which is populated with numerous surface-mount components, including several ICs and passive components. A USB Type-A connector is visible at the top. The board is placed on a blue textured surface next to a black ruler with white markings, showing dimensions in millimeters. The ruler is positioned to the left of the board, with markings from 0 to 100 mm visible.</p>

<p style="text-align: center;">Solder Board-Component View 3</p>	 <p>A photograph of a green PCB component with 18 LEDs, labeled LED1 through LED18. The component is placed on a blue textured surface next to a black ruler with white markings. The ruler shows measurements from 0 to 60 mm on the vertical axis and 0 to 100 mm on the horizontal axis. The component is oriented horizontally, with the LEDs facing upwards.</p>
<p style="text-align: center;">Solder Board-Component View 4</p>	 <p>A photograph of the same green PCB component from a different perspective. The component is placed on a blue textured surface next to a black ruler with white markings. The ruler shows measurements from 0 to 50 mm on the vertical axis and 0 to 100 mm on the horizontal axis. The component is oriented horizontally. The back of the component is visible, showing a white logo on the left, a 'PN:' label, and the text 'UNIUBI-1031-WLED-REV1_1' and '20200304' on the right. The word 'RoHS' is printed at the bottom right.</p>

