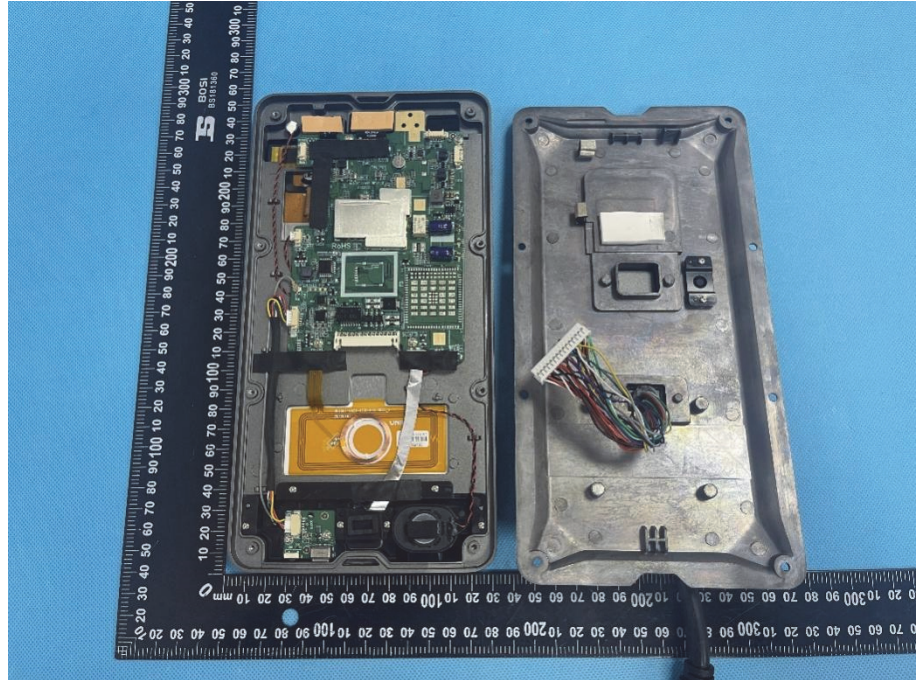


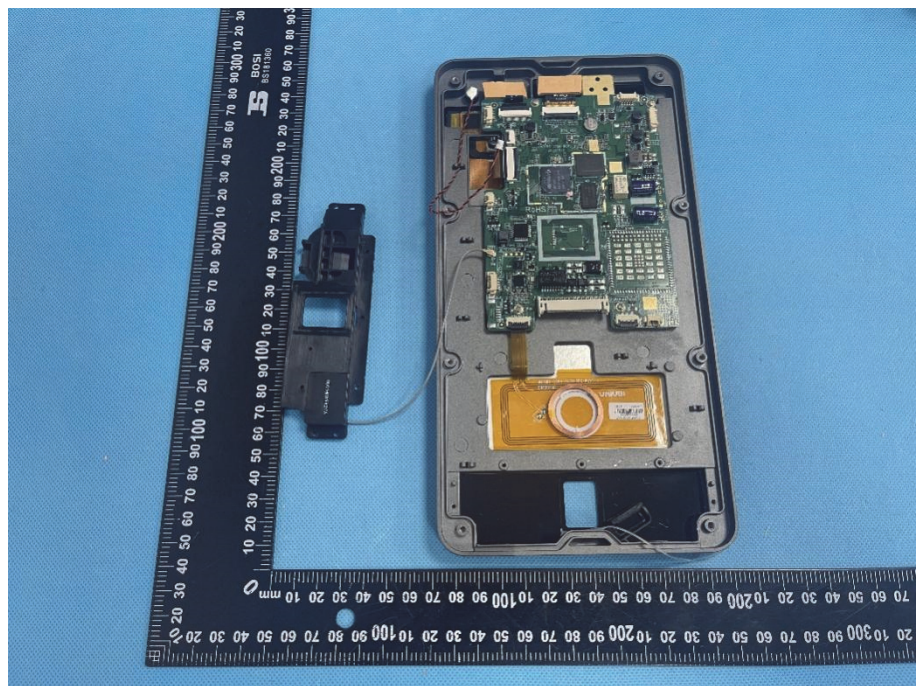
EXHIBIT 3 - EUT INTERNAL PHOTOGRAPHS

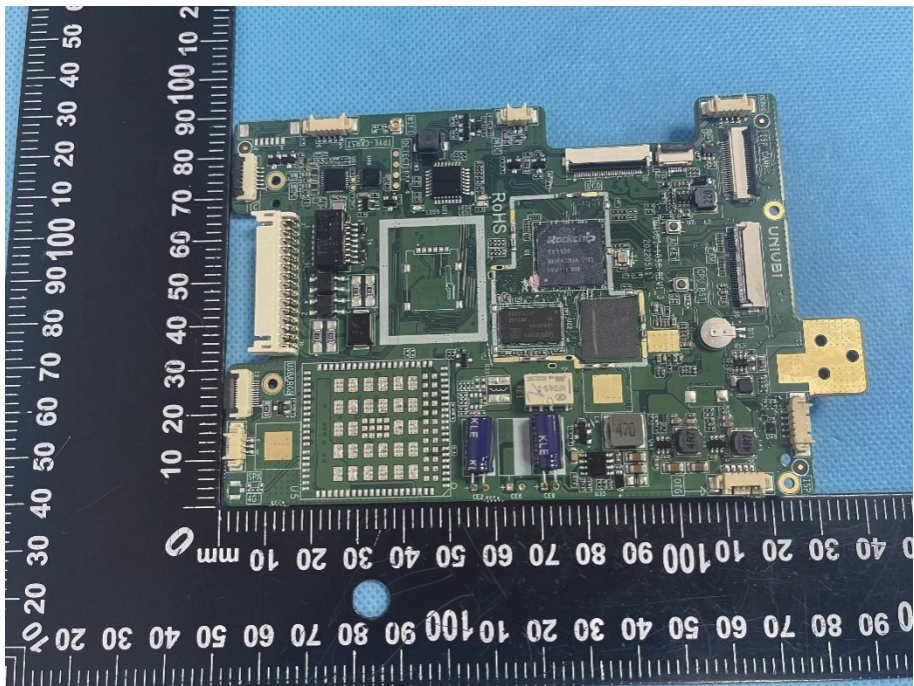
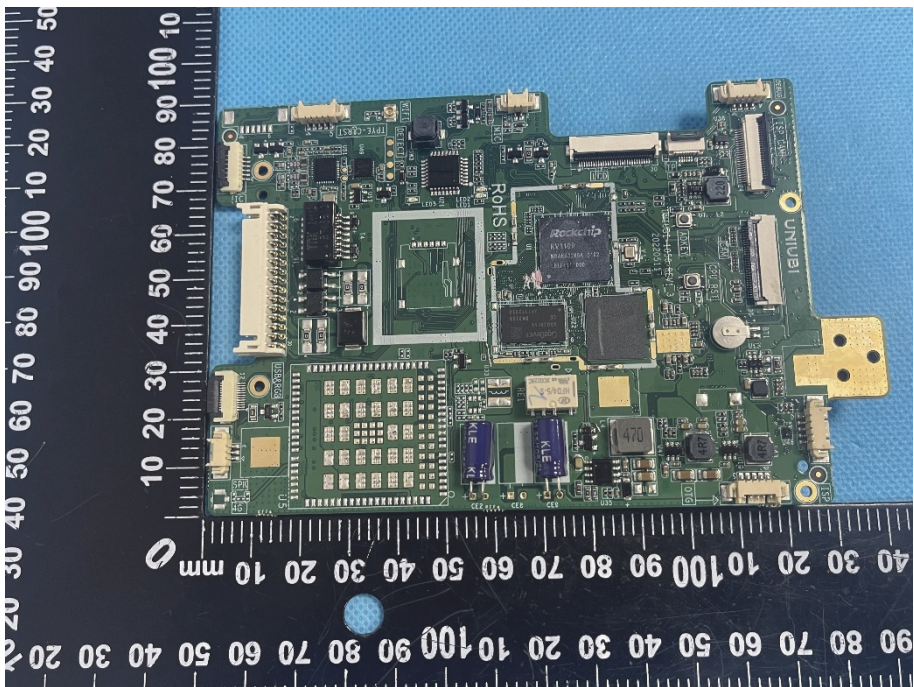
Model: E86-1701-OS-VF

EUT Housing and Board View 1

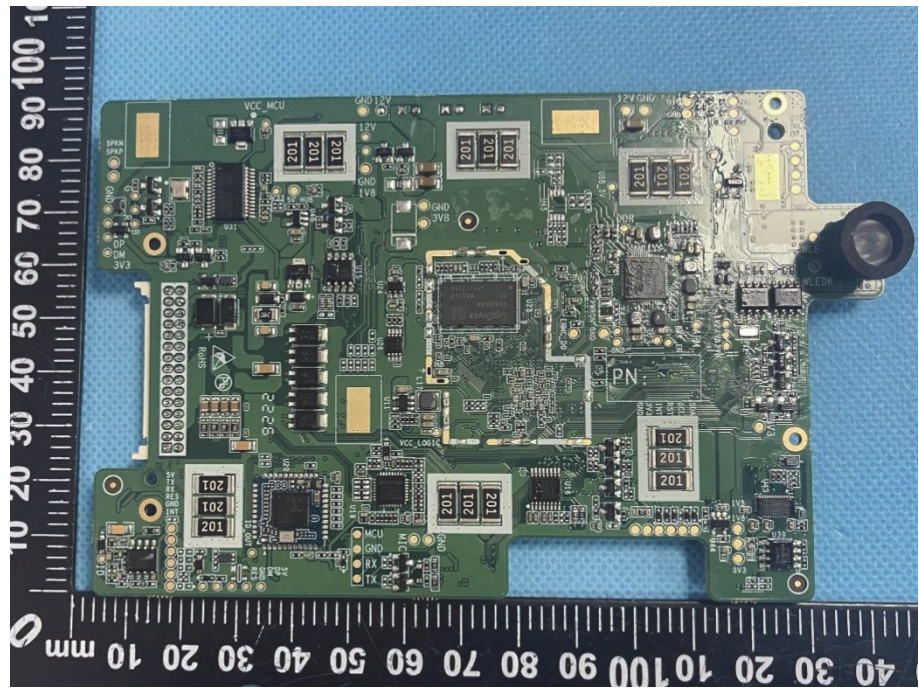


EUT Housing and Board View 2

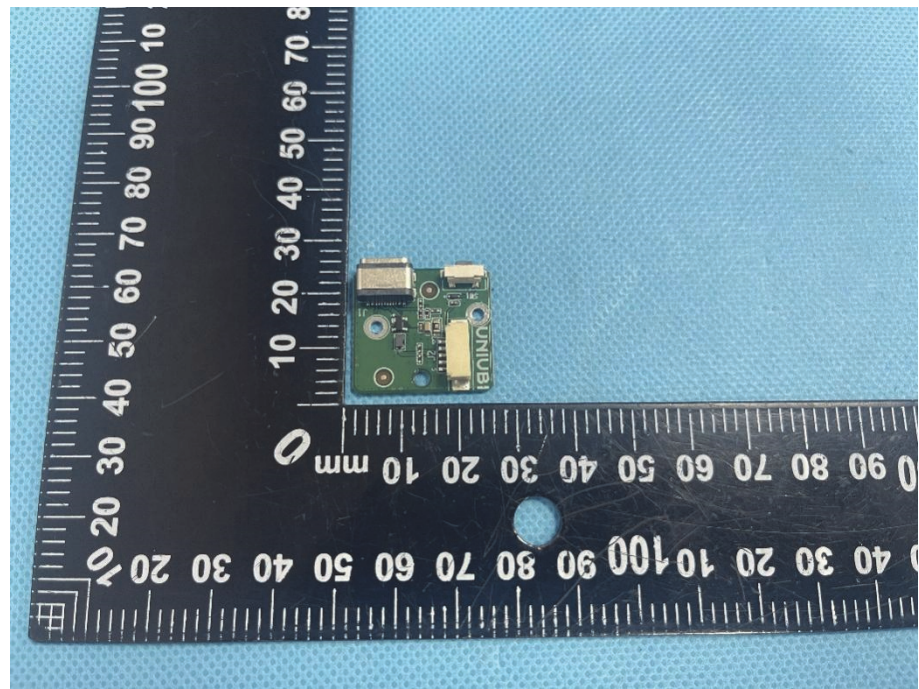


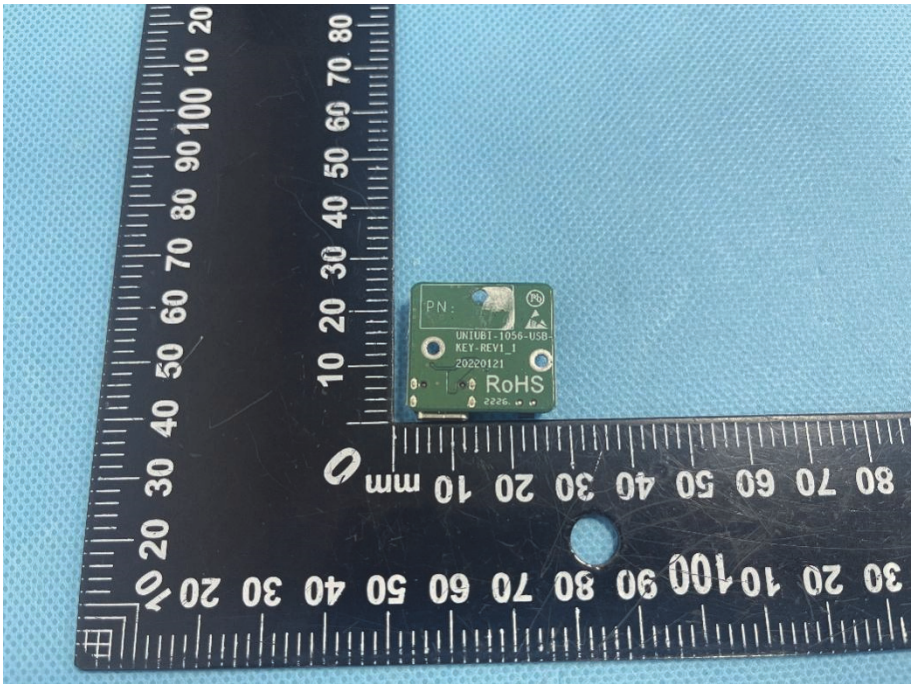
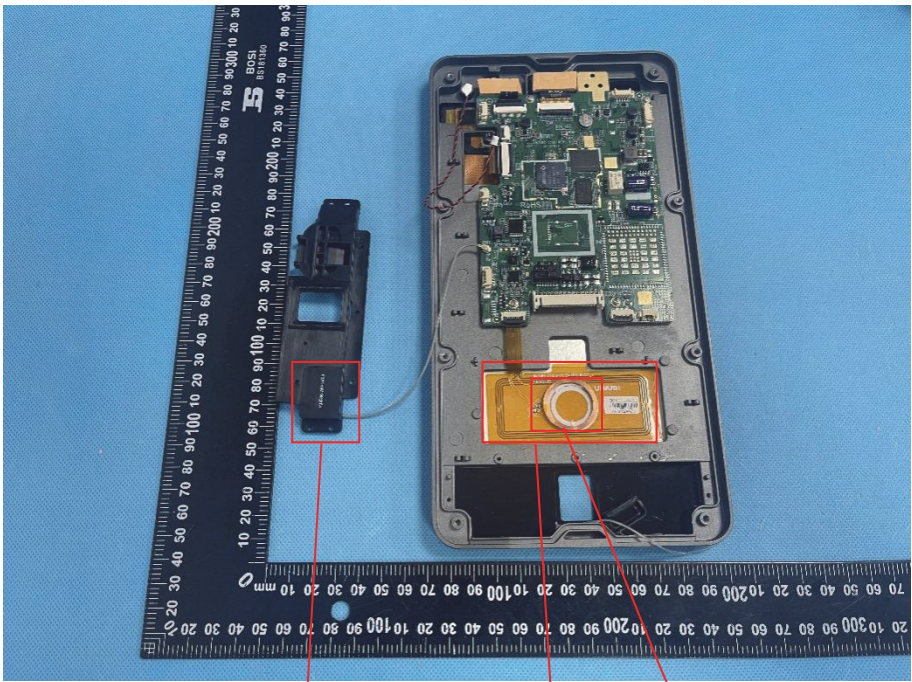
<p>Solder Board-Component View 1</p>	 A photograph of a green printed circuit board (PCB) assembly, likely a solder board component, placed on a blue textured surface. The board is populated with various electronic components, including a large square chip in the center, several smaller integrated circuits, and surface-mount components. A black ruler with white markings is positioned vertically to the left of the board, showing measurements in millimeters. The board has a gold-colored connector on the right side and a gold-colored pad on the bottom right. The text "ROHS" and "UNIVERS" are visible on the board.
<p>Solder Board-Component View 2</p>	 A photograph of the same green PCB assembly as in View 1, showing a different perspective. The board is populated with various electronic components, including a large square chip in the center, several smaller integrated circuits, and surface-mount components. A black ruler with white markings is positioned vertically to the left of the board, showing measurements in millimeters. The board has a gold-colored connector on the right side and a gold-colored pad on the bottom right. The text "ROHS" and "UNIVERS" are visible on the board.

**Solder
Board-Component
View 3**



**Solder
Board-Component
View 4**



<p>Solder Board-Component View 5</p>	
<p>Antenna View 1</p>	 <p>Wi-Fi and BT Antenna</p> <p>13.56MHz Antenna</p> <p>125 KHz Antenna</p>