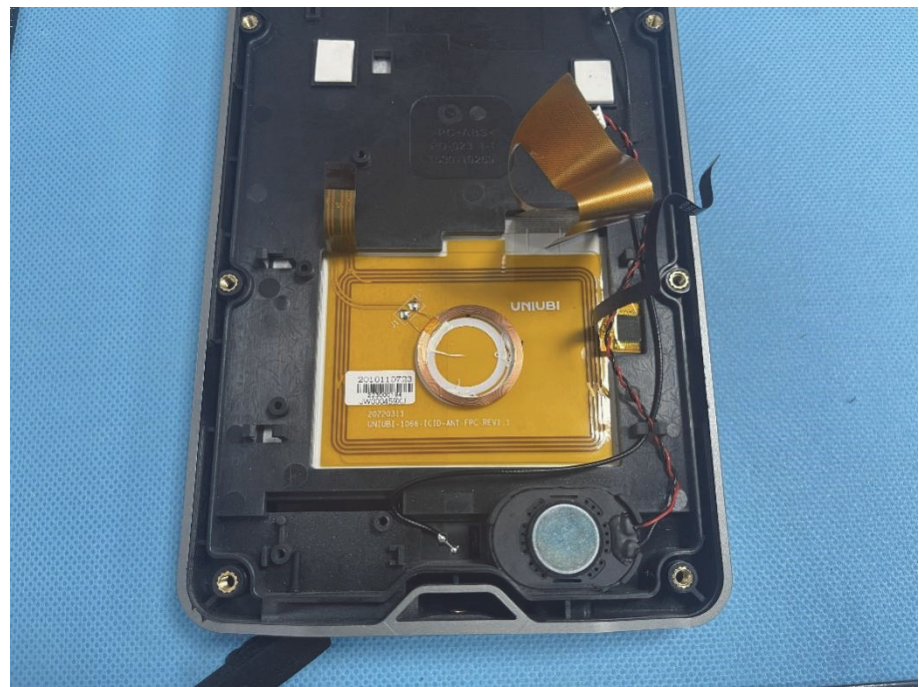


EXHIBIT 3 - EUT INTERNAL PHOTOGRAPHS

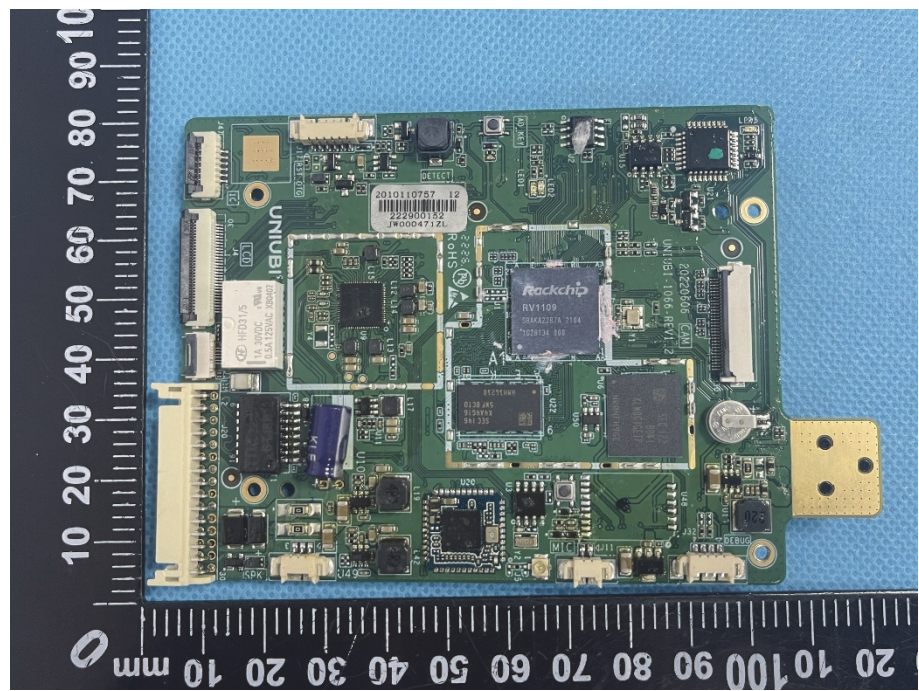
EUT Housing and Board View 1



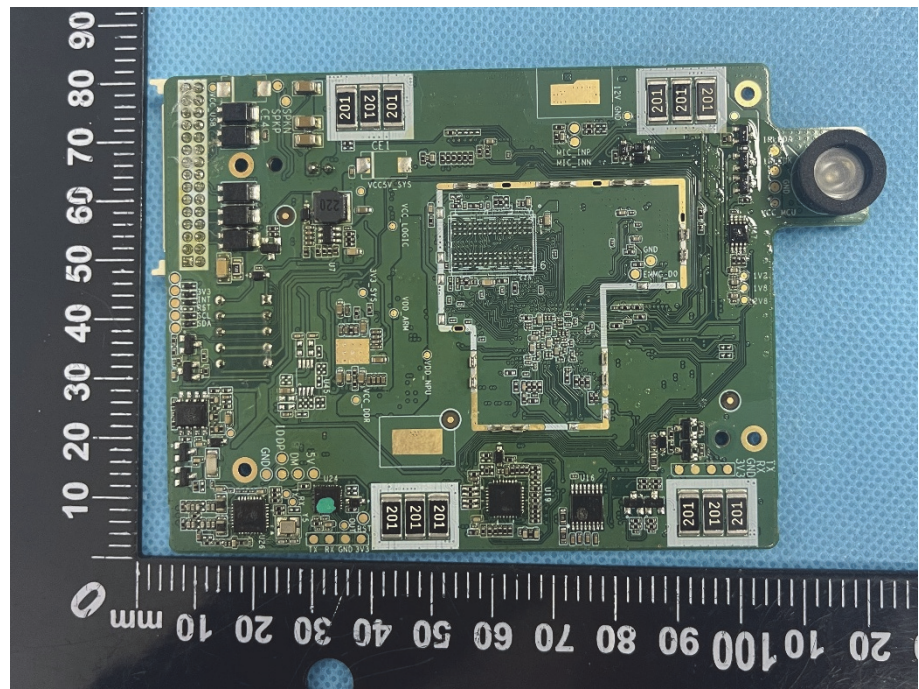
EUT Housing and Board View 2

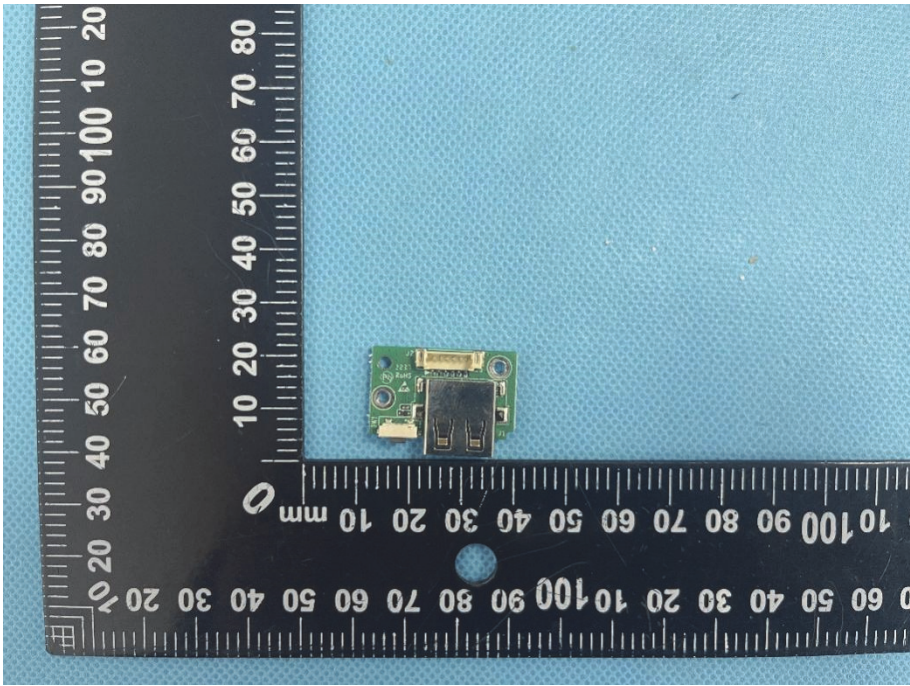
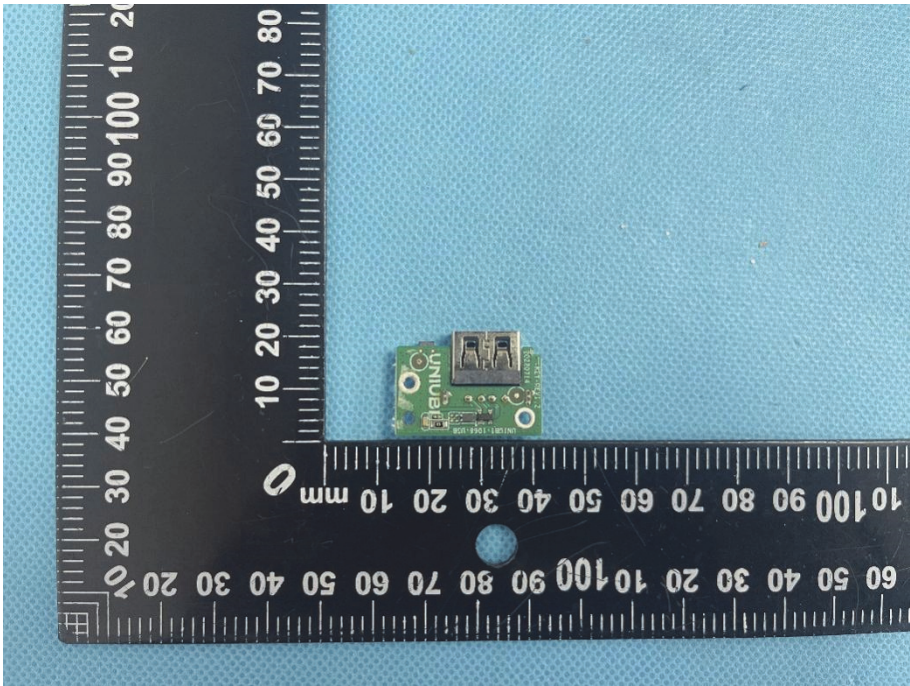


**Solder
Board-Component
View 1**

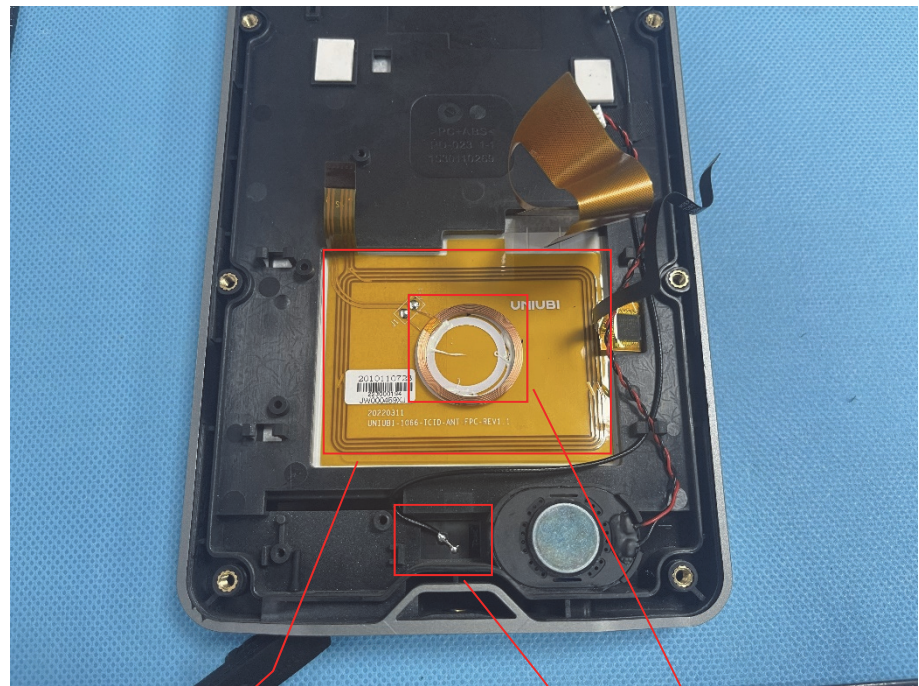


**Solder
Board-Component
View 2**



<p>Solder Board-Component View 3</p>	 A photograph showing a small green printed circuit board (PCB) component, likely a USB-to-UART bridge, placed on a blue textured surface. The component is positioned next to a black L-shaped ruler for scale. The ruler has white markings in millimeters and centimeters. The component features a USB Type-A connector on one side and a micro-USB connector on the other. There are several surface-mount components, including a small integrated circuit (IC) and several resistors. The text 'UNIMAX' is visible on the PCB.
<p>Solder Board-Component View 4</p>	 A photograph showing the same small green PCB component from a different perspective. The component is placed on the same blue textured surface next to the same black L-shaped ruler. This view shows the opposite side of the component, highlighting the micro-USB connector and the USB Type-A connector. The text 'UNIMAX' is clearly visible on the PCB. The ruler markings are consistent with the previous view.

Antenna View 1



13.56MHz Antenna

Wi-Fi and BT Antenna

125 KHz Antenna