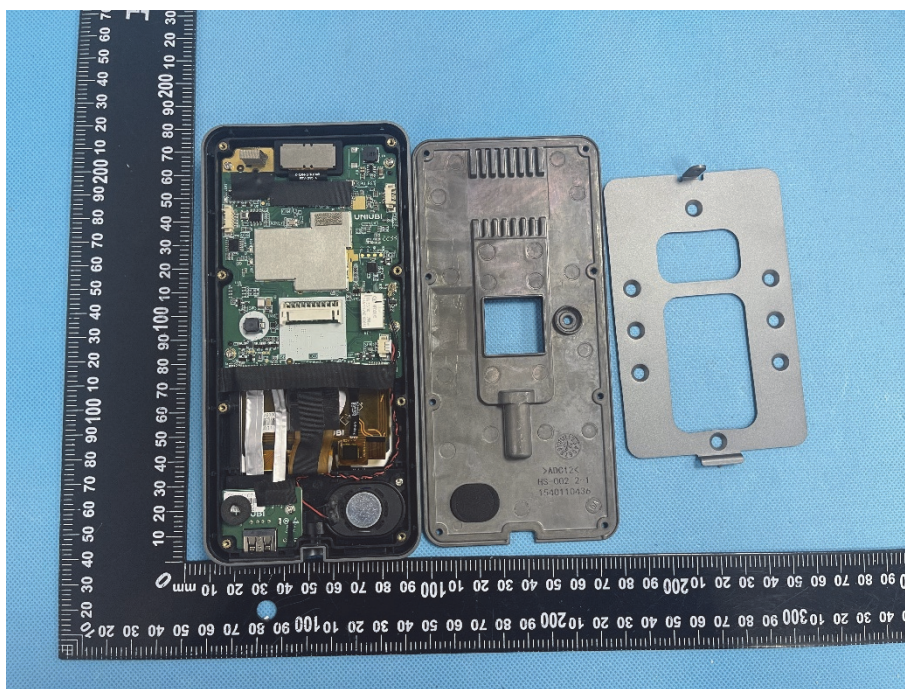
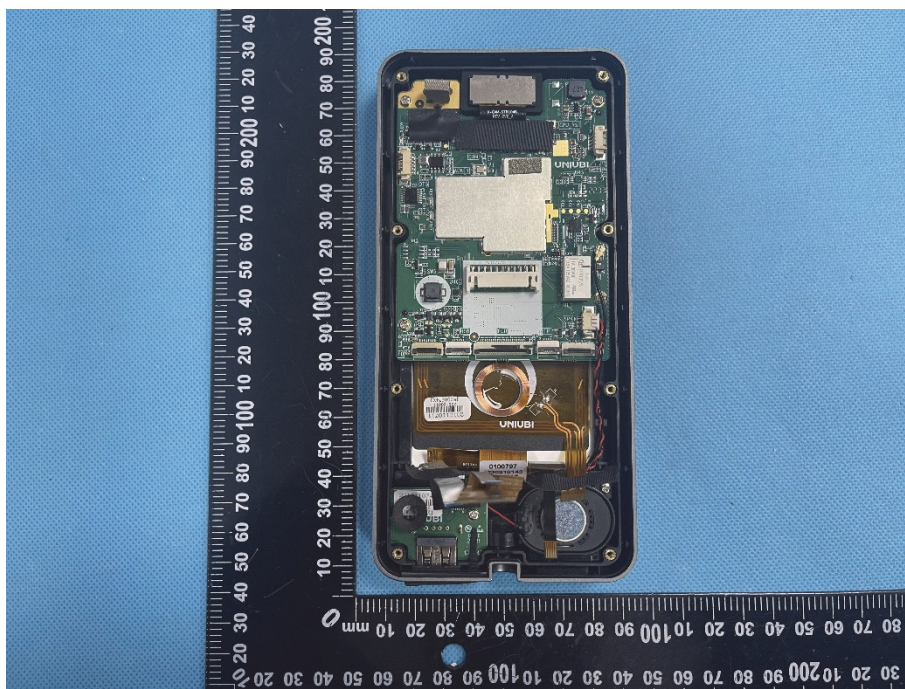


EXHIBIT 3 - EUT INTERNAL PHOTOGRAPHS

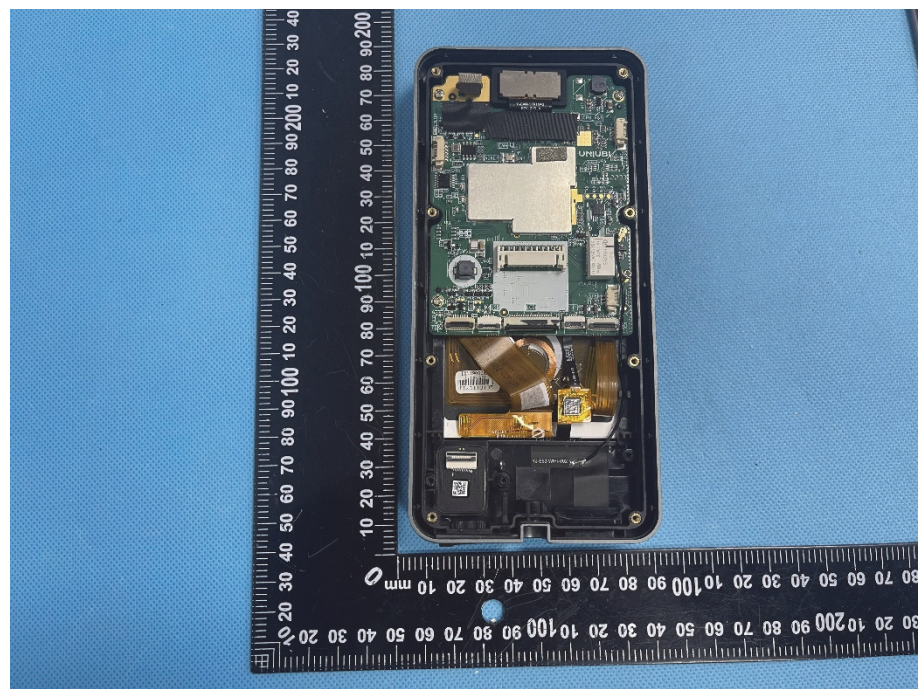
EUT Housing and Board View 1



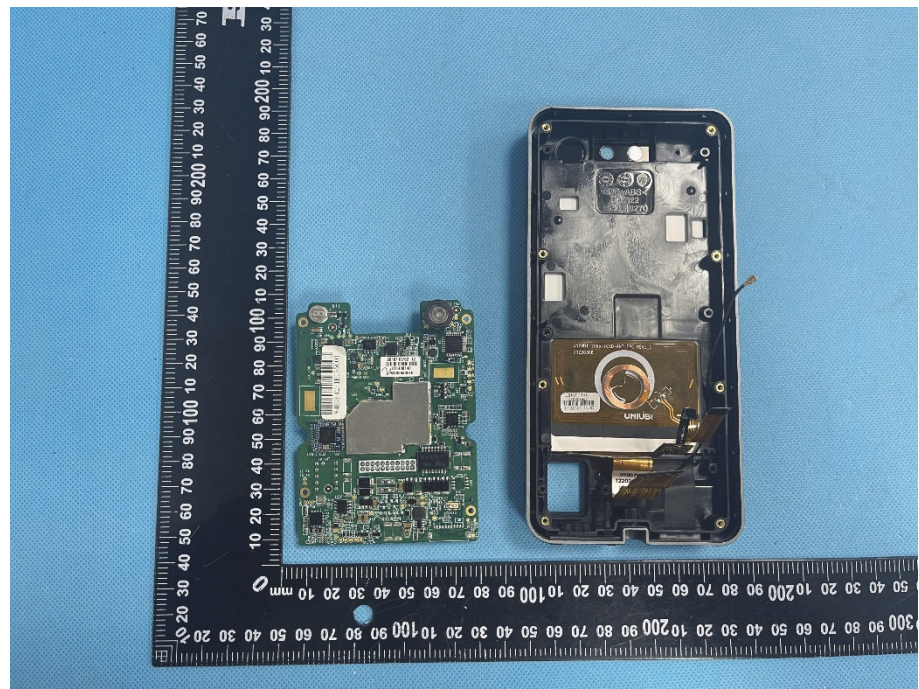
EUT Housing and Board View 2

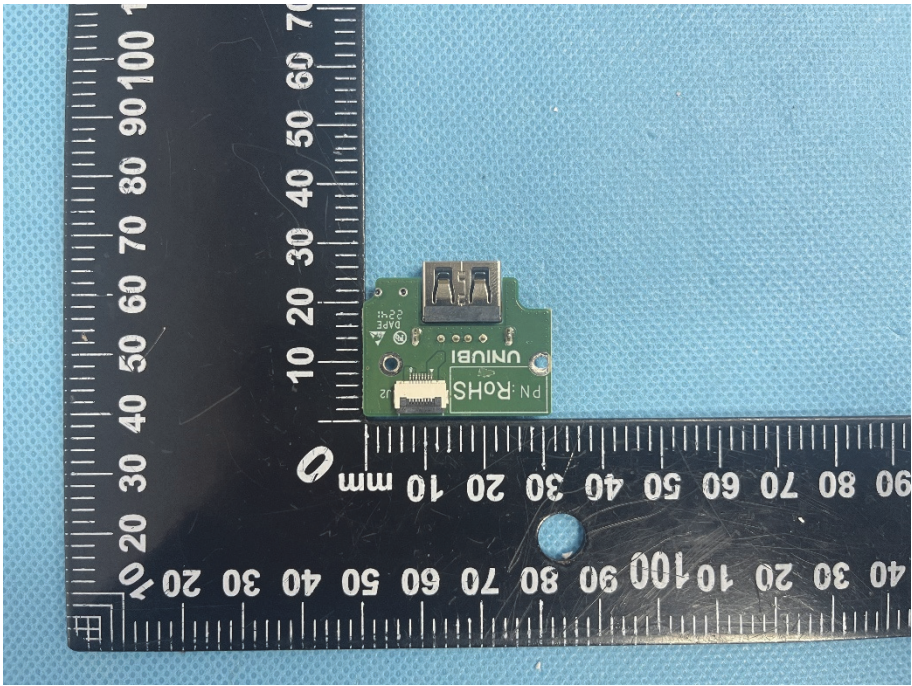
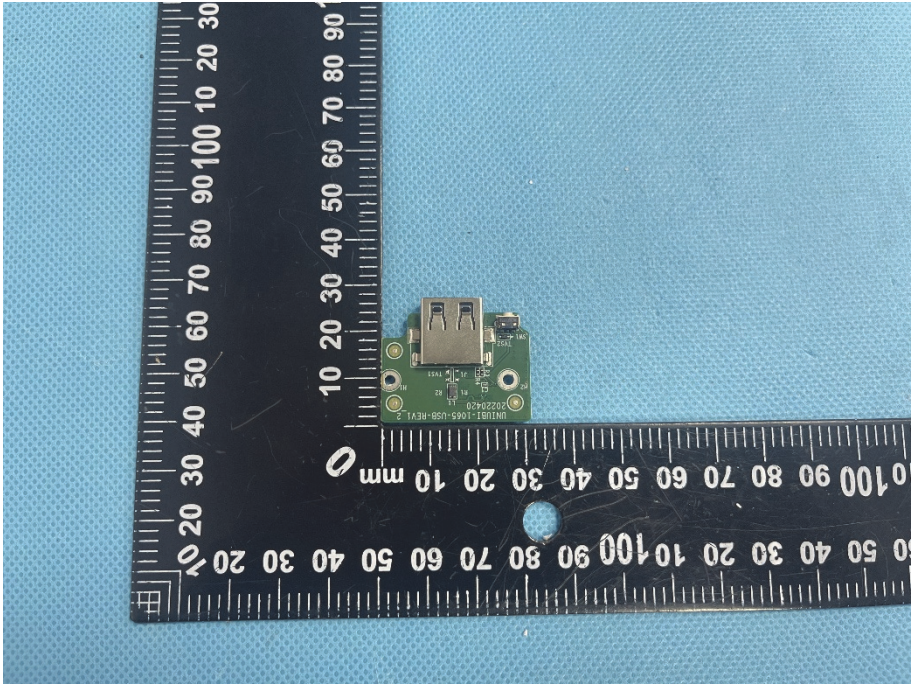


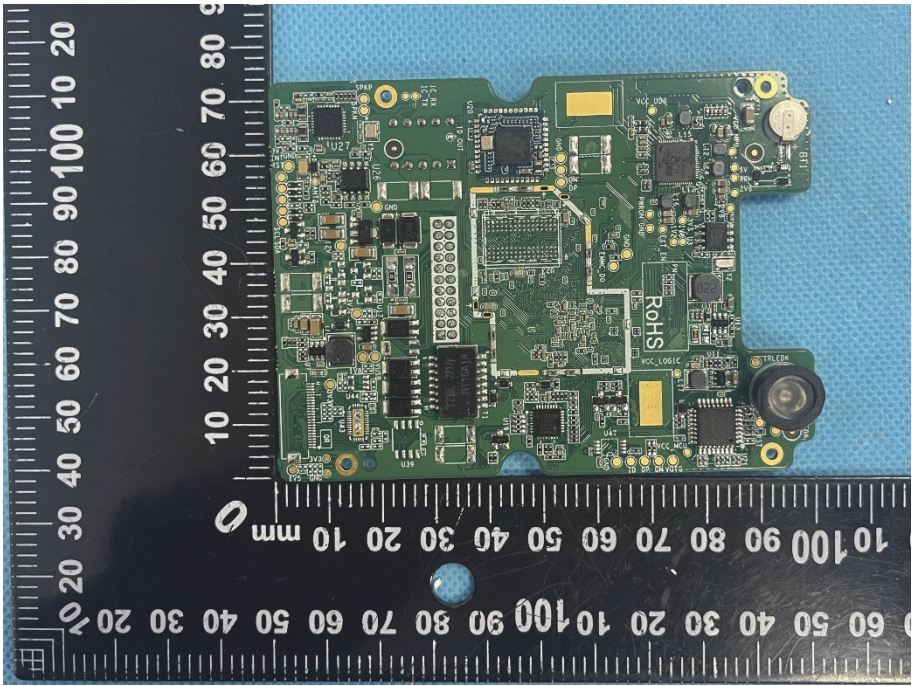
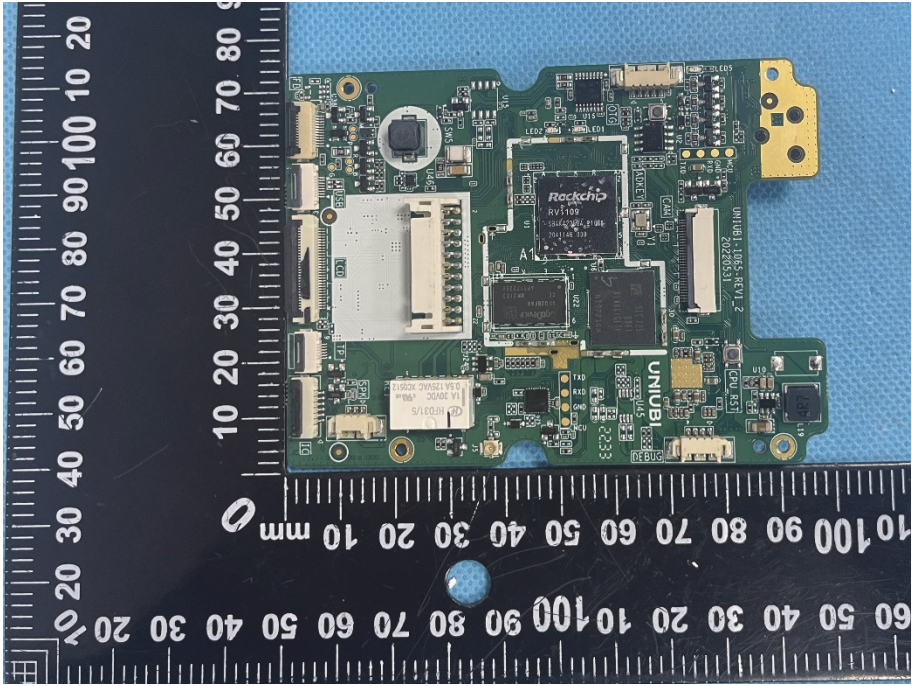
EUT Housing and Board View 3



EUT Housing and Board View 4



<p>Solder Board-Component View 1</p>	 <p>A photograph of a small green printed circuit board (PCB) component, likely a USB connector, placed on a blue textured surface. The component is oriented vertically. A black ruler with white markings is positioned horizontally below the component, showing measurements in millimeters. The ruler is marked from 0 to 100 mm. The component has a silver metal USB Type-A connector on its top edge. On the green PCB, there are several small components and markings, including "UNIBI" and "PN RoHS".</p>
<p>Solder Board-Component View 2</p>	 <p>A photograph of the same small green PCB component as in View 1, but from a different perspective. The component is oriented horizontally. A black ruler with white markings is positioned vertically to the left of the component, showing measurements in millimeters. The ruler is marked from 0 to 100 mm. The component has a silver metal USB Type-A connector on its right edge. On the green PCB, there are several small components and markings, including "UNIBI" and "PN RoHS".</p>

<p>Solder Board-Component View 3</p>	 <p>A photograph of a green printed circuit board (PCB) with various electronic components. The board is oriented vertically and is placed on a blue textured surface. A black ruler with white markings is positioned horizontally at the top of the board, showing measurements in millimeters from 0 to 100. The PCB features a central microcontroller, several integrated circuits, and various passive components. A prominent component is labeled 'ROHS'. The board has a complex shape with several cutouts and mounting points.</p>
<p>Solder Board-Component View 4</p>	 <p>A photograph of the same green PCB from a different perspective. The board is oriented vertically. A black ruler with white markings is positioned horizontally at the top of the board, showing measurements in millimeters from 0 to 100. The PCB features a central microcontroller labeled 'Rockchip RV1108', a large white component labeled 'UNIUM', and other components. The board has a complex shape with several cutouts and mounting points.</p>