

Back

Front

 **WARNING: FOR INDOOR USE ONLY**

This device complies with Part 15 of the FCC Rules. Operation is subject to the following two conditions:

- (1) this device may not cause harmful interference, and
- (2) this device must accept any interference received, including interference that may cause undesired operation.

WARNING: Changes or modifications to this unit not expressly approved by the party responsible for compliance could void the user's authority to operate the equipment.

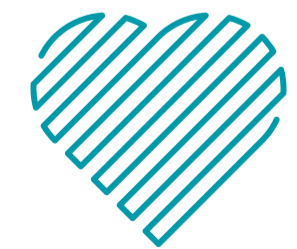
NOTE: This equipment has been tested and found to comply with the limits for a Class B digital device, pursuant to Part 15 of the FCC Rules. These limits are designed to provide reasonable protection against harmful interference in a residential installation. This equipment generates, uses, and can radiate radio frequency energy and, if not installed and used in accordance with the instructions, may cause harmful interference to radio communications. However, there is no guarantee that interference will not occur in a particular installation. If this equipment does cause harmful interference to radio or television reception, which can be determined by turning the equipment off and on, the user is encouraged to try to correct the interference by one or more of the following measures:

- Reorient or relocate the receiving antenna.
- Increase the separation between the equipment and receiver.
- Connect the equipment into an outlet on a circuit different from that to which the receiver is connected.
- Consult the dealer or an experienced radio TV technician for help.

The device has been evaluated to meet general RF exposure requirement.
The device can be used in portable exposure condition without restriction.

*This Class B digital apparatus complies with Canadian ICES-003.
Cet appareil numérique de la classe B est conforme à la norme NMB-003 du Canada.*

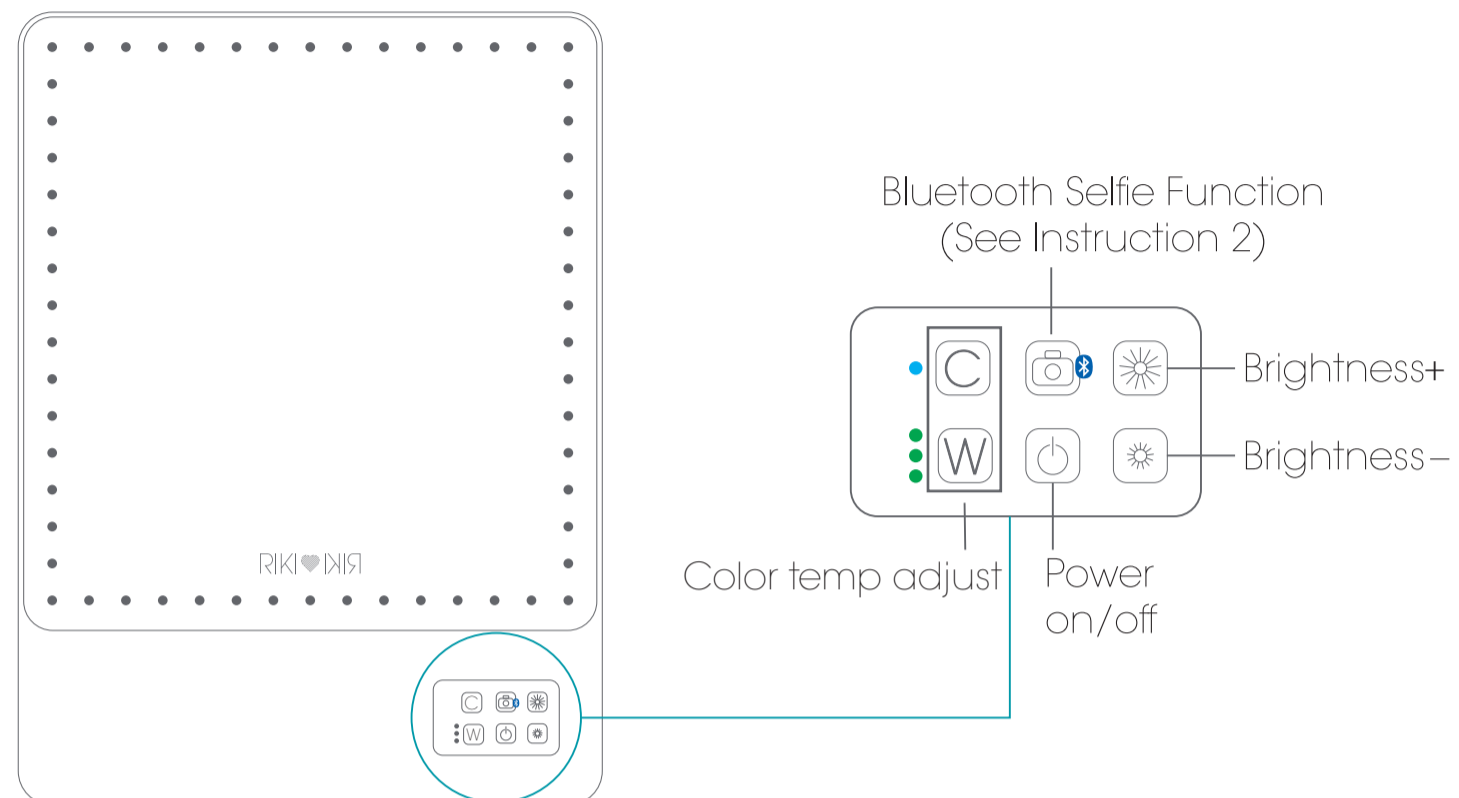
RIKI LOVES RIKI™ and RIKI RIKI™ are trademarks of GLAMCOR LLC • International Reg. No. DM/091574 • US Patent Nos. D743704, D749329, D769109
www.rikilovesriki.com • Copyright 2016. All rights reserved. Made in China. • US and foreign patents pending



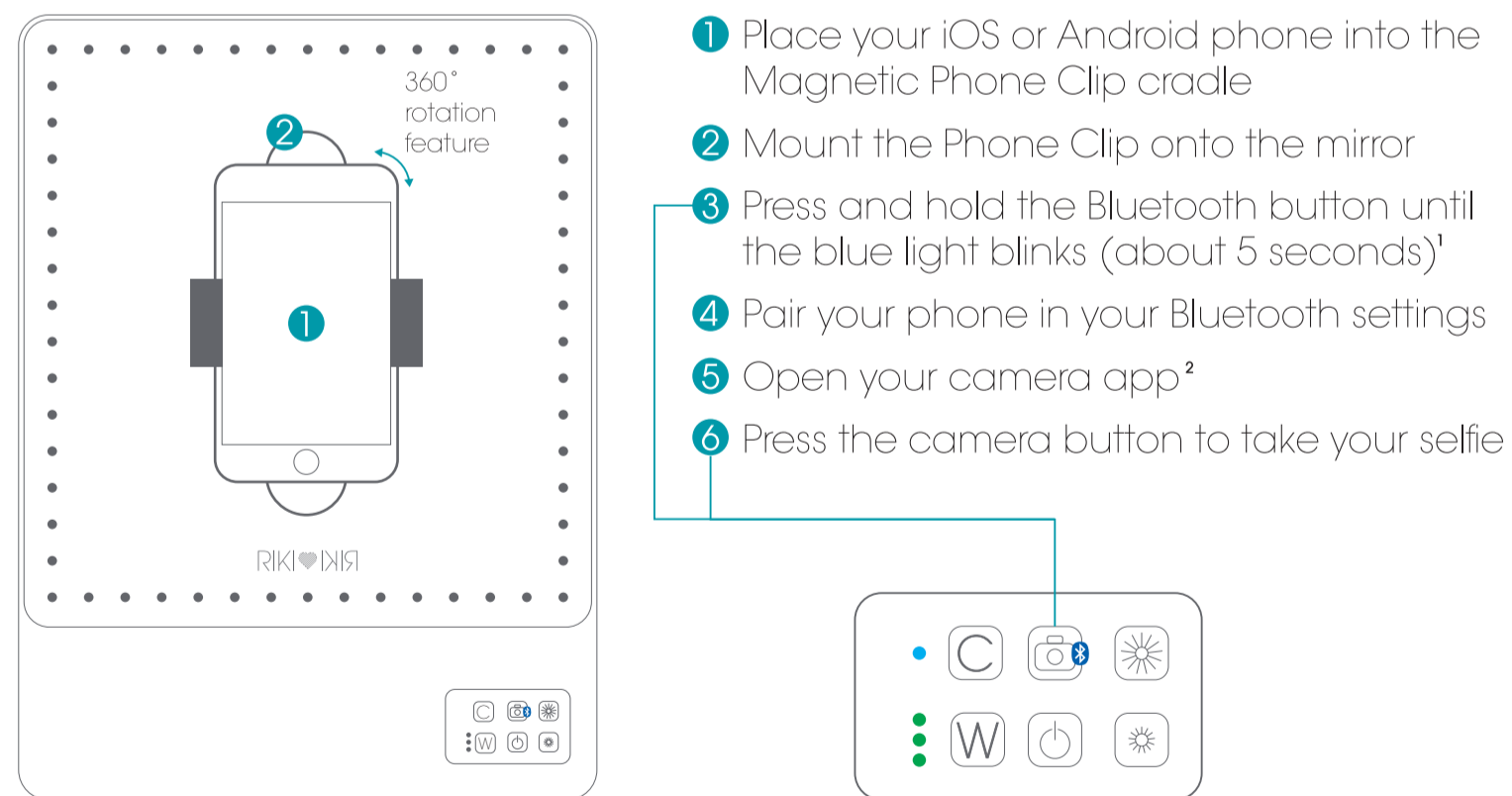
RIKI SKINNY DUO

Inside left

1 Get familiar with the controls



2 Take the best selfies on the planet!

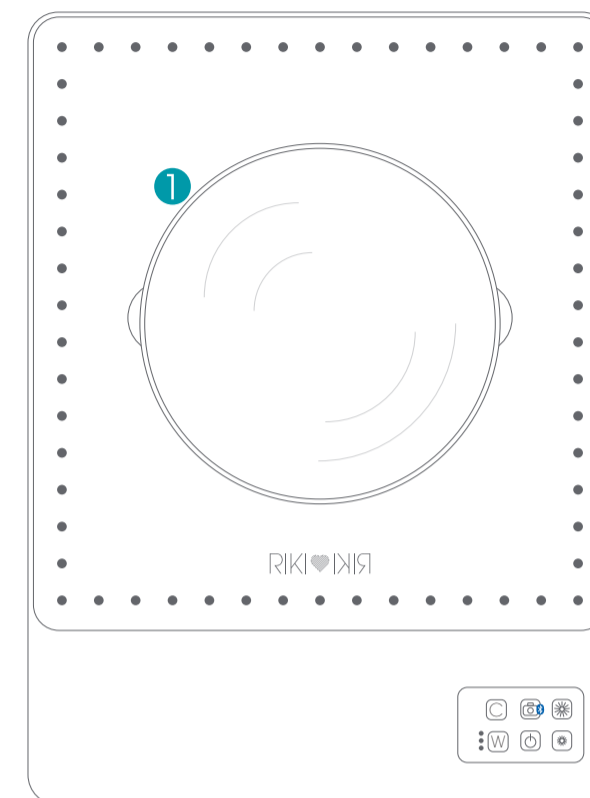


¹ The power for the Bluetooth is independent from the power for the mirror. Power off the Bluetooth by pressing and holding the Bluetooth button for five (5) seconds until the blue light goes dark.

² On Android phones, enable the volume button to take pictures.

Inside Right

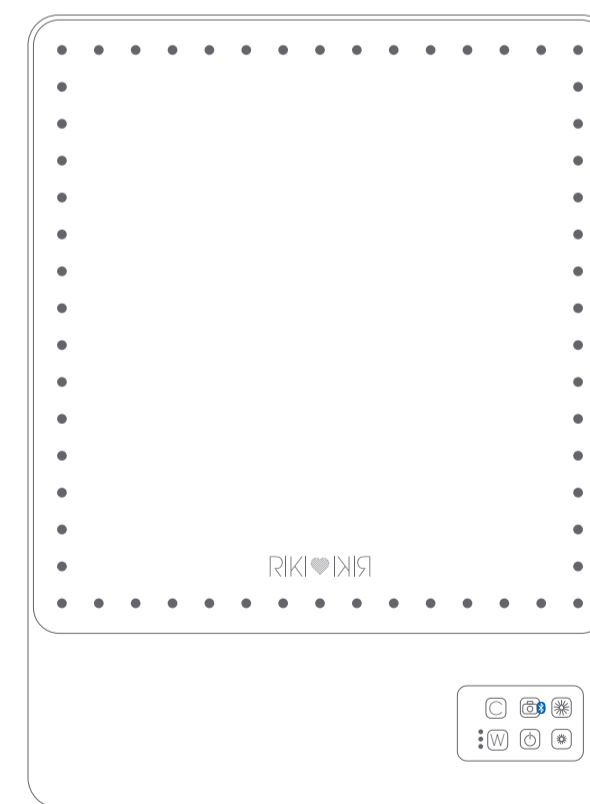
3 See the details with the magnifying mirror



We made it really easy to get up close to see those details.

- 1 Mount the Magnetic Magnifying Mirror as shown in the picture

4 Battery charging information



- 1 Insert Micro USB plug into the side of the mirror as indicated by the location of the arrow

A full charge will take four (4) hours

This device is compatible with global voltages of 100-240 VAC, 50/60 Hz

NOTE: When plugged in and charging, the green lights on the battery life indicator will go dark after 30 seconds while still charging

NEED SOME HELP?

Email us at help@rikilovesriki.com

WANT TO SAY HI AND HAVE FUN?

#rikilovesriki