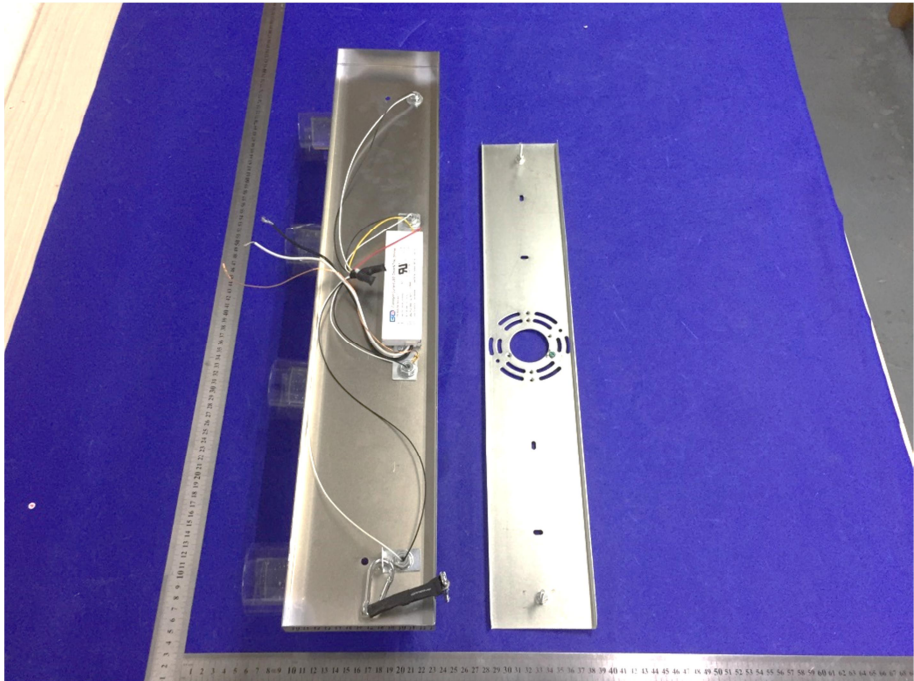

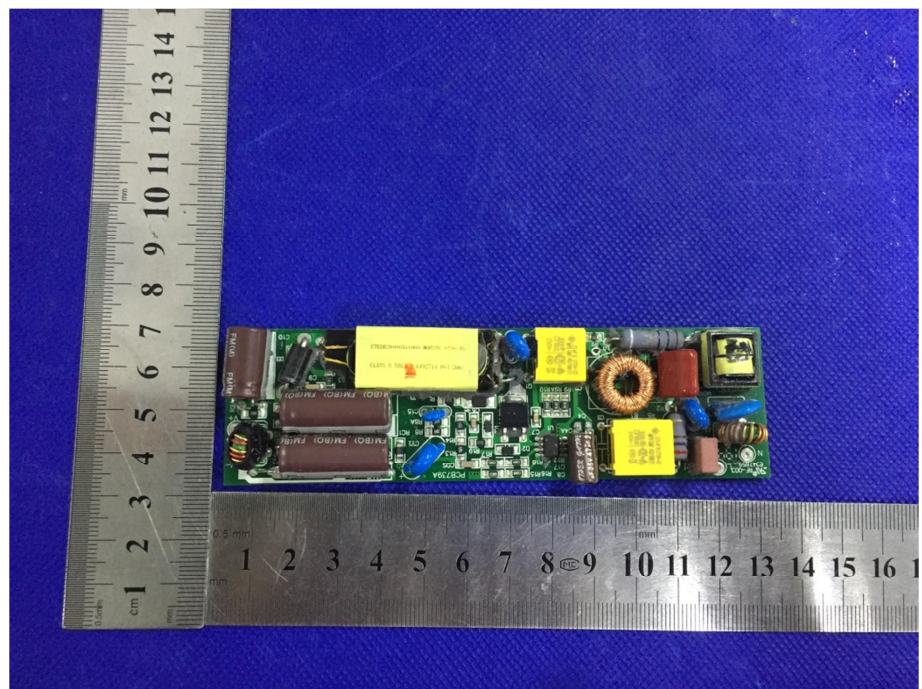


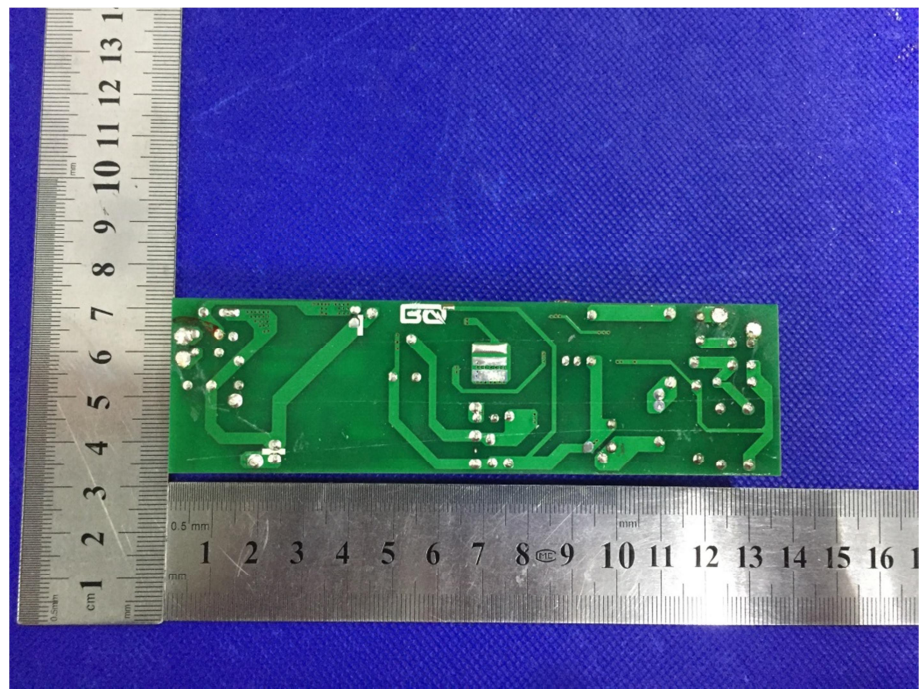
EXHIBIT 3 - EUT INTERNAL PHOTOGRAPHS

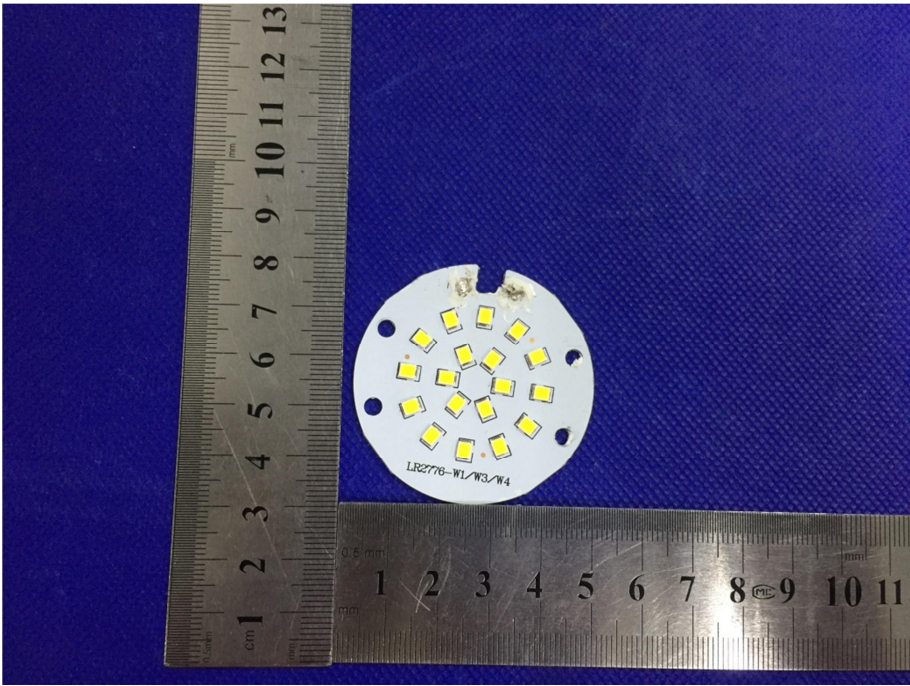
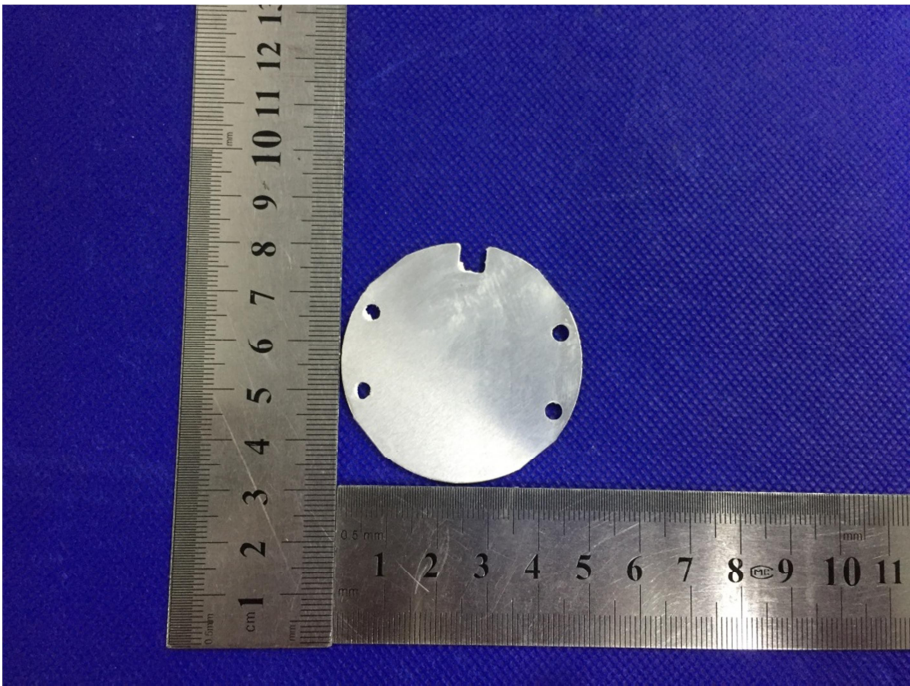
<p>EUT Housing and Board View 1</p>	 <p>A photograph showing two long, narrow metal components on a blue surface. On the left is a silver-colored metal housing with a white LED driver board mounted on it. Wires are connected to the board. On the right is a similar metal component with a circular fan-like cutout. A ruler is placed below the components for scale.</p>
<p>Solder Board-Component View 1</p>	 <p>A close-up photograph of the LED driver board component. The board is white and has the following text printed on it:</p> <p>EQ Constant Current LED Driver&Triac dimmer P/N: BQE25E-0600-40-TD Vin: 100-135VAC 50/60Hz Iin: 0.5A Max P F: >0.92 Max Pout: 26W ta: 50°C Vout: 30-40VDC Iout: 600mA C.C. MADE IN CHINA BECKY 2001-A</p> <p>Additional markings include: AC INPUT (L-BLACK, N-WHITE), •tc, Class 2, C, E478128, US, DC OUTPUT (LED-RED, LED-YELLOW).</p>

**Solder
Board-Component View
2**



**Solder
Board-Component View
3**



<p style="text-align: center;">Solder Board-Component View 4</p>	 <p>A circular white PCB component is shown against a blue background. The component has a central area with several yellow rectangular components arranged in a circular pattern. There are four blue circular solder points around the perimeter. A ruler is placed vertically to the left and horizontally below the component for scale. The ruler shows centimeters and millimeters. The component is approximately 1.5 cm in diameter. The text 'LR2778-W1/W3/W4' is visible on the component.</p>
<p style="text-align: center;">Solder Board-Component View 5</p>	 <p>A circular silver PCB component is shown against a blue background. The component has four blue circular solder points around the perimeter. A ruler is placed vertically to the left and horizontally below the component for scale. The ruler shows centimeters and millimeters. The component is approximately 1.5 cm in diameter.</p>