



Report No.: EA21020095F01001

1 of 23

**ELECTROMAGNETIC EMISSIONS COMPLIANCE REPORT
UNINTENTIONAL RADIATORS CERTIFICATION TO
FCC PART 15 SUBPART B REQUIREMENT**

for

Flat Panel Vanity

Model No.: SY-VAN-FP, VAN-FP

Trademark: TWINSEL, SHUANGYU, RISEN, SYL, Artika

FCC ID: 2AUHG-VAN-FP

Report No.: EA21020095F01001

Issue Date: Feb. 26, 2021

Prepared for

ARTIKA FOR LIVING INC

1756 50th avenue, Lachine, Quebec, Canada, H8T 2V5

Prepared by

Dong Guan Anci Electronic Technology Co., Ltd.

**1-2 Floor, Building A, No.11, Headquarters 2 Road, Songshan, Lake Hi-tech
Industrial Development Zone, Dongguan City, Guangdong Pr., China.**

**This report shall not be reproduced, except in full, without the written approval of
Dong Guan Anci Electronic Technology Co., Ltd.**



TABLE OF CONTENT

Test Report Description	Page
1. SUMMARY OF TEST RESULTS.....	5
2. GENERAL INFORMATION.....	6
2.1. Description of Device (EUT).....	6
2.2. Input / Output Ports.....	6
2.3. Independent Operation Modes.....	6
2.4. Test Manner.....	7
2.5. Description of Test Facility.....	8
2.6. Test Software.....	8
2.7. Description of Support Device.....	8
2.8. Measurement Uncertainty.....	8
3. MEASURING DEVICE AND TEST EQUIPMENT.....	9
3.1. For Power Line Conducted Emission Measurement.....	9
3.2. For Radiated Emission Measurement.....	9
4. POWER LINE CONDUCTED EMISSION MEASUREMENT.....	10
4.1. Block Diagram of Test Setup.....	10
4.2. Limits.....	10
4.3. Test Procedure.....	10
4.4. Measuring Results.....	11
5. RADIATED EMISSION MEASUREMENT (UP TO 1GHZ).....	14
5.1. Block Diagram of Test Setup.....	14
5.2. Radiated Limit.....	14
5.3. Test Procedure.....	14
5.4. Measuring Results.....	15
6. PHOTOGRAPHS.....	18
6.1. Photos of Conducted Emission Measurement.....	18
6.2. Photos of Radiation Emission Measurement.....	18
 APPENDIX A: Photos of EUT (6 Pages)	



TEST REPORT DESCRIPTION

Applicant : ARTIKA FOR LIVING INC
Manufacturer : ARTIKA FOR LIVING INC
Factory : ZHEJIANG SHUANGYU ELECTRONIC TECHNOLOGY CO.,LTD
Trade Mark : TWINSEL, SHUANGYU, RISEN, SYL, Artika
EUT : Flat Panel Vanity
Model No. : SY-VAN-FP, VAN-FP
Power Supply : AC 120V/60Hz, 0.4A max

Measurement Procedure Used:


CFR 47, FCC Part 15 Subpart B
ANSI C63.4-2014

The device described above is tested by Dong Guan Anci Electronic Technology Co., Ltd. to determine the maximum emission levels emanating from the device and the severe levels of the device can endure and its performance criterion. The measurement results are contained in this test report and Dong Guan Anci Electronic Technology Co., Ltd. is assumed full of responsibility for the accuracy and completeness of these measurements. Also, this report shows that the EUT (Equipment Under Test) is technically compliant with the FCC requirements.

This report applies to above tested sample only and shall not be reproduced in part without written approval of Dong Guan Anci Electronic Technology Co., Ltd.

Date of Test : Feb. 24, 2021 to Feb. 26, 2021

Prepared by : 
Tomas Yang/Supervisor

Approved & Authorized Signer : 
Alan He/Manager



Modified Information

Version	Report No.	Revision Data	Summary
Ver.1.0	EA21020095F01001	/	Original Version

1. SUMMARY OF TEST RESULTS

EMISSION		
Description of Test Item	Standard & Limits	Results
Conducted Emission at Mains Terminals	FCC Part 15, Subpart B, Class B ANSI C63.4-2014	Pass
Radiated Emission	FCC Part 15, Subpart B, Class B ANSI C63.4-2014	Pass

2. GENERAL INFORMATION

2.1. Description of Device (EUT)

EUT : Flat Panel Vanity

Model Number : SY-VAN-FP, VAN-FP
The two models are the same except for the model name and band.

Test Model : SY-VAN-FP

Test Voltage : AC 120V/60Hz

Applicant : ARTIKA FOR LIVING INC

Address : 1756 50th avenue, Lachine, Quebec, Canada, H8T 2V5

Manufacturer : ARTIKA FOR LIVING INC

Address : 1756 50th avenue, Lachine, Quebec, Canada, H8T 2V5

Factory : ZHEJIANG SHUANGYU ELECTRONIC TECHNOLOGY CO.,LTD

Address : Tashan Industry Zone, Meilin Street, Ninghai County, Ningbo City, 315609, Zhejiang, P.R.China

Date of Received : Feb. 24, 2021

Date of Test : Feb. 24, 2021 to Feb. 26, 2021

2.2. Input / Output Ports

Port #	Name	Type*	Cable Max. >3m	Cable Shielded	Comments
0	Enclosure	N/E	--	--	None
1	AC Input port	AC	--	--	1 Port
2	USB Port	I/O	--	--	1 Port
3	Aux Port	I/O	--	--	1 Port
4	Earphone	I/O	--	--	1 Port

* Note: Use abbreviations:

AC= AC Power Port

DC= DC Power Port

N/E= Non-Electrical

I/O= Signal Input or Output Port (Not Involved in Process Control)

TP= Telecommunication Ports

2.3. Independent Operation Modes

A. On

B. Off

2.4. Test Manner

Test Items	Test Voltage	Operation Modes	Worst case
Conducted Emission	AC 120V/60Hz	Mode A	On
Radiated Emission	AC 120V/60Hz	Mode A	On

2.5. Description of Test Facility

Site Description EMC Lab.	: Accredited by CNAS, 2017.06.26 The certificate is valid until 2022.10.28 The Laboratory has been assessed and proved to be in compliance with CNAS-CL01:2006 (identical to ISO/IEC 17025:2005) The Certificate Registration Number is L0468.
	Accredited by A2LA, 2018.03.15 The Certificate Number is 4422.01.
Name of Firm	: Dong Guan Anci Electronic Technology Co., Ltd.
Site Location	: Bldg 69, Majialong Industry Zone, Nanshan District, Shenzhen, Guangdong, China.

2.6. Test Software

Item	Software
Conducted Emission	: EZ-EMC Ver:ANCI-3A1

Radiated Emission : EZ-EMC Ver:ANCI-3A1

2.7. Description of Support Device

N/A

2.8. Measurement Uncertainty

Test Item	Uncertainty
Conducted Emission Uncertainty	: 2.96dB(9k~150kHz Conduction 1#) 2.74dB(150k-30MHz Conduction 1#)
Radiated Emission Uncertainty (3m Chamber)	: 3.78dB (30M~1GHz Polarize: H) 4.27dB (30M~1GHz Polarize: V)

3. MEASURING DEVICE AND TEST EQUIPMENT

3.1. For Power Line Conducted Emission Measurement

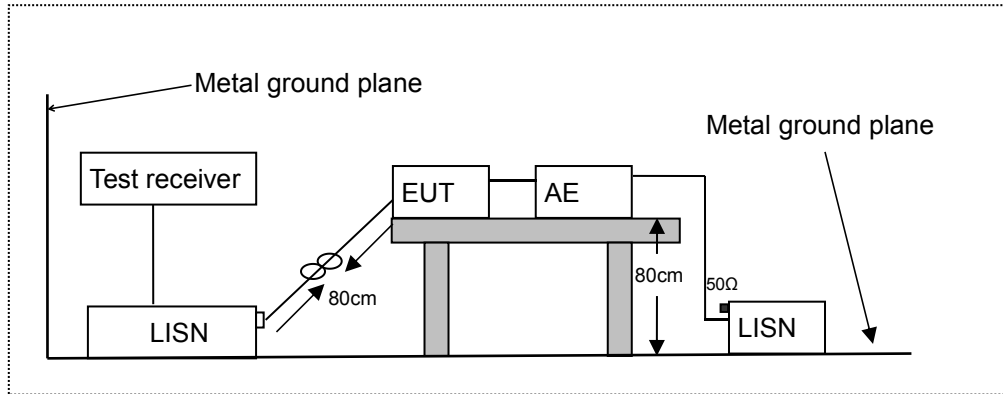
Item	EQUIPMENT TYPE	MFR	MODEL NUMBER	SERIAL NUMBER	Calibrated until
1.	L.I.S.N	SCHWARZBECK	NSLK 8127	8127-669	2021-05-18
2.	10 db attenuator	JFW	50FP-010-H4	4360846-427-1	2021-05-18
3.	RF Cable	N/A	N/A	2#	2021-05-18
4.	EMI Test Receiver	ROHDE&SCHWARZ	ESCI	101358	2021-05-18

3.2. For Radiated Emission Measurement

Item	Equipment	Manufacturer	Model No.	Serial No.	Calibrated until
5.	EMI Test Receiver	Rohde & Schwarz	ESPI	100502	2021-11-19
6.	Pre-Amplifier	HP	8447D	2727A06172	2021-05-18
7.	Bilog Antenna	Schwarzbeck	VULB9163	VULB9163-588	2021-05-18
8.	Loop Antenna	Schwarzbeck	FMZB 1516	1516-141	2021-05-18
9.	RF Cable	Gigalink Microwave	ZT40-2.92J-2.92 J-2m	N/A	2021-05-18
10.	RF Cable	Gigalink Microwave	ZT40-2.92J-2.92 J-0.3m	N/A	2021-05-18
11.	RF Cable	N/A	N/A	6#	2021-05-18
12.	3m Semi-anechoic Chamber	chengyu	9m*6m*6m	N/A	2021-05-18
13.	Test Software	Farad	EZ-EMC Ver:ANCI-3A1	N/A	N/A

4. POWER LINE CONDUCTED EMISSION MEASUREMENT

4.1. Block Diagram of Test Setup



LISN: Line Impedance Stabilization Network
 AE: Associated equipment
 EUT: Equipment under test

4.2. Limits

FCC Part 15, Subpart B, Class B

Frequency (MHz)	Limit (dB μ V)	
	Quasi-peak Level	Average Level
0.15 ~ 0.50	66.0 ~ 56.0 *	56.0 ~ 46.0 *
0.50 ~ 5.00	56.0	46.0
5.00 ~ 30.00	60.0	50.0

NOTE1-The lower limit shall apply at the transition frequencies.
 NOTE2-The limit decreases linearly with the logarithm of the frequency in the range 0.15MHz to 0.50MHz.

4.3. Test Procedure

The EUT was placed on a desk 0.8 m height from the metal ground plane and 0.4 m from the conducting wall of the shielding room and it was kept at least 0.8 m from any other grounded conducting surface. The size of the table will nominally be 1.5 m x1.0 m.

The rear of the arrangement shall be flush with the back of the supporting tabletop unless that would not be possible or typical of normal use.

All units of equipment forming the system under test (includes the EUT as well as connected peripherals and associated equipment or devices) shall be arranged such that a nominal 0.1 m separation is achieved between the neighboring units.

Connect EUT to the power mains through a line impedance stabilization network (LISN). Where the mains cable supplied by the manufacturer is longer than 1 m, the excess should be folded at the centre into a bundle no longer than 0.4 m, so that its length is shortened to 1 m.

All the support units are connecting to the other LISN.

The LISN provides 50 ohm coupling impedance for the measuring instrument.

Both sides of AC line were checked for maximum conducted interference.

The frequency range from 150 kHz to 30 MHz was sweep.

Set the test-receiver system to quasi peak detect function and average detect function, and to

measure the conducted emissions values.

Test results were obtained from the following equation:

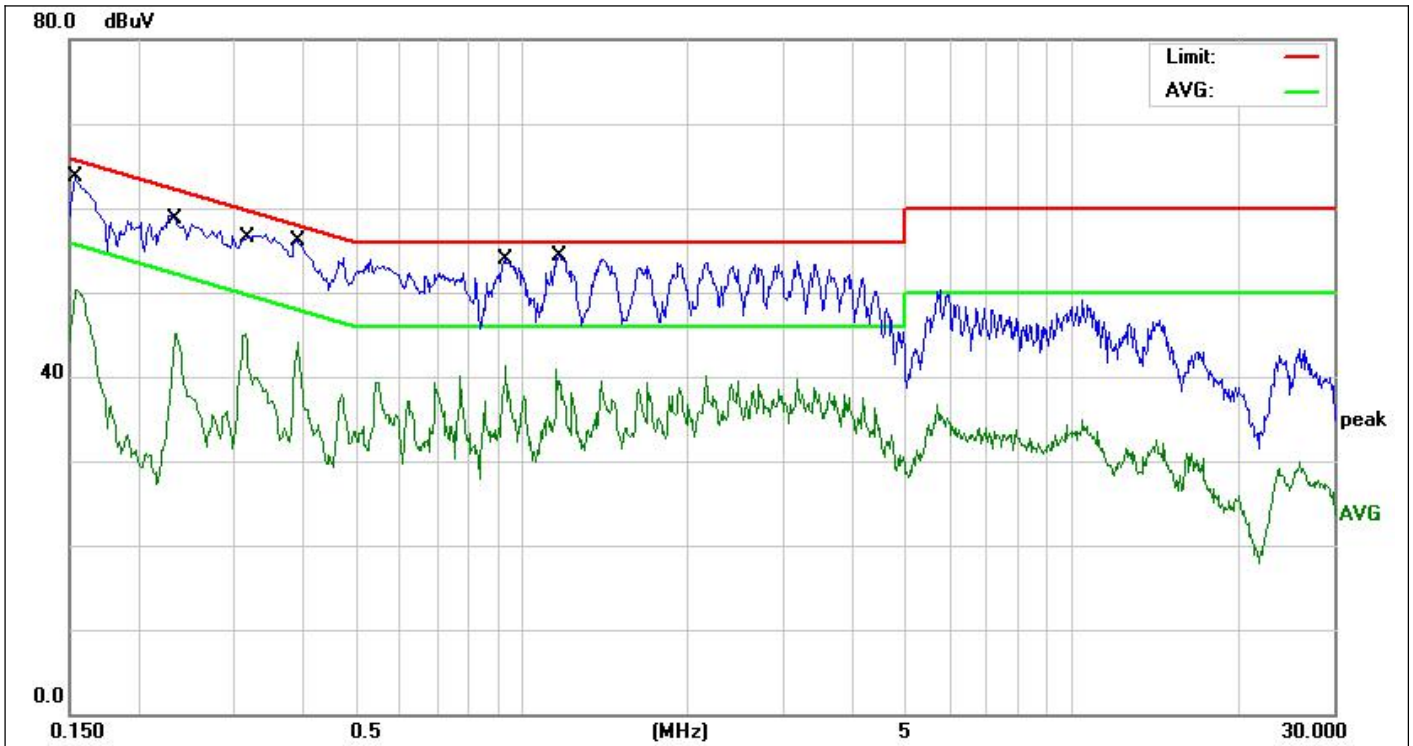
Emission Level (dB μ V) = LISN Factor (dB) + Cable Loss (dB) + Reading (dB μ V)

Margin (dB) = Emission Level (dB μ V) - Limit (dB μ V)

4.4. Measuring Results

PASS.

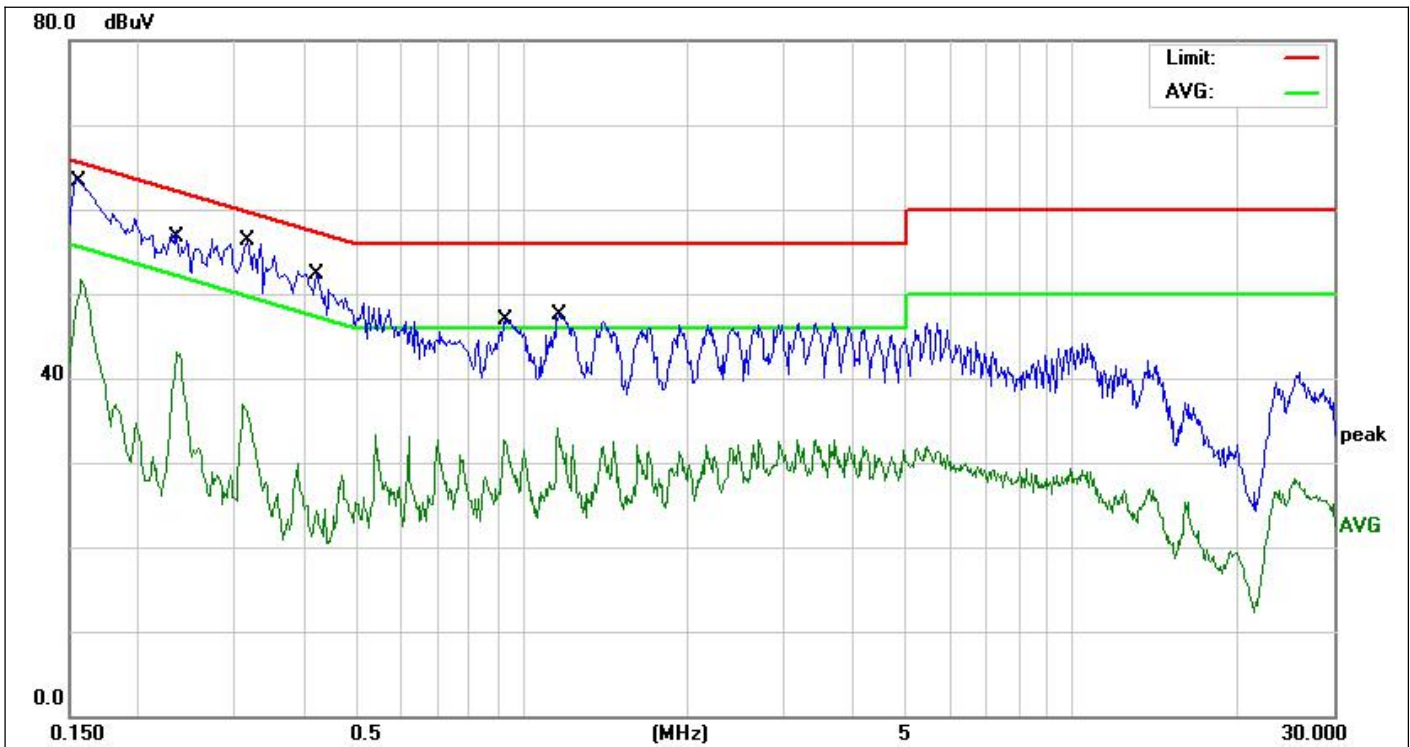
Please refer to following pages.



Site:	843	Phase:	L1	Temperature(C):	26(C)
Limit:	FCC PART 15B Conduction(QP)	Test Time:	2021-02-26	Humidity(%):	60%
EUT:	Flat Panel Vanity	Power Rating:	AC 120V/60Hz	Test Engineer:	Jack
M/N.:	SY-VAN-FP	Note:			
Mode:	ON				

No.	Frequency (MHz)	Reading Level(dBuV)	Factor (dB)	Measurement(dBuV)	Limit (dBuV)	Over (dB)	Detector	Comment
1	0.1539	51.05	10.15	61.20	65.78	-4.58	QP	
2	0.1539	40.68	10.15	50.83	55.78	-4.95	AVG	
3	0.2353	43.84	10.16	54.00	62.26	-8.26	QP	
4	0.2353	33.42	10.16	43.58	52.26	-8.68	AVG	
5	0.3116	45.22	10.17	55.39	59.93	-4.54	QP	
6	0.3116	34.15	10.17	44.32	49.93	-5.61	AVG	
7	0.3914	44.32	10.18	54.50	58.03	-3.53	QP	
8	0.3914	33.98	10.18	44.16	48.03	-3.87	AVG	
9	0.9340	42.28	10.24	52.52	56.00	-3.48	QP	
10	0.9340	30.97	10.24	41.21	46.00	-4.79	AVG	
11 *	1.1580	42.48	10.24	52.72	56.00	-3.28	QP	
12	1.1580	29.20	10.24	39.44	46.00	-6.56	AVG	

*:Maximum data x:Over limit !:over margin



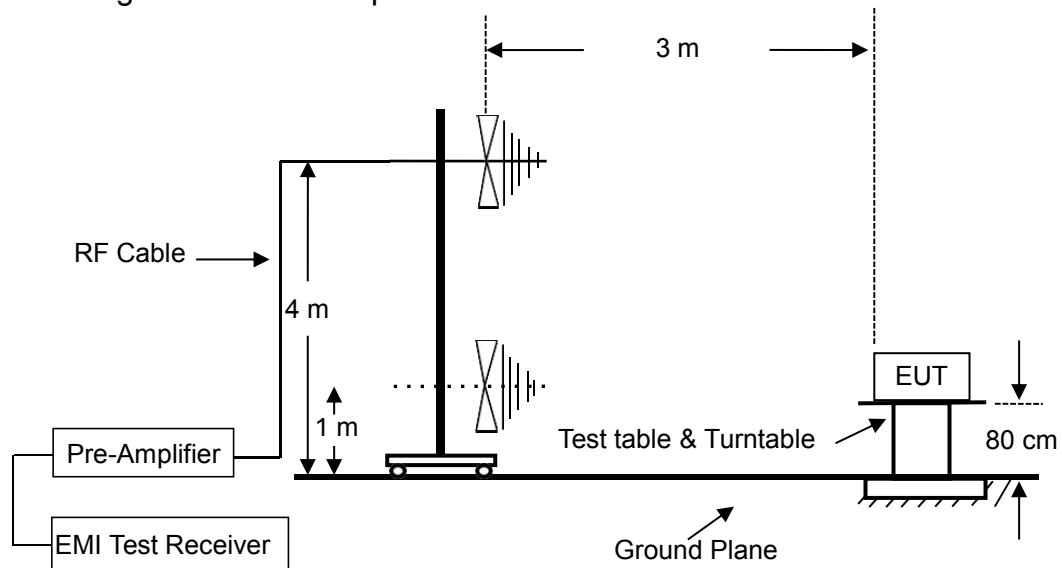
Site:	843	Phase:	N	Temperature(C):	26(C)
Limit:	FCC PART 15B Conduction(QP)	Test Time:	2021-02-26	Humidity(%):	60%
EUT:	Flat Panel Vanity	Power Rating:	AC 120V/60Hz	Test Engineer:	Jack
M/N.:	SY-VAN-FP	Note:			
Mode:	ON				

No.	Frequency (MHz)	Reading Level(dBuV)	Factor (dB)	Measurement(dBuV)	Limit (dBuV)	Over (dB)	Detector	Comment
1	0.1580	50.49	10.15	60.64	65.56	-4.92	QP	
2 *	0.1580	41.47	10.15	51.62	55.56	-3.94	AVG	
3	0.2366	43.42	10.16	53.58	62.21	-8.63	QP	
4	0.2366	32.24	10.16	42.40	52.21	-9.81	AVG	
5	0.3180	37.45	10.17	47.62	59.76	-12.14	QP	
6	0.3180	22.02	10.17	32.19	49.76	-17.57	AVG	
7	0.4220	33.28	10.19	43.47	57.41	-13.94	QP	
8	0.4220	12.34	10.19	22.53	47.41	-24.88	AVG	
9	0.9380	34.57	10.24	44.81	56.00	-11.19	QP	
10	0.9380	21.45	10.24	31.69	46.00	-14.31	AVG	
11	1.1660	34.57	10.24	44.81	56.00	-11.19	QP	
12	1.1660	21.88	10.24	32.12	46.00	-13.88	AVG	

*:Maximum data x:Over limit !:over margin

5. RADIATED EMISSION MEASUREMENT (UP TO 1GHz)

5.1. Block Diagram of Test Setup



5.2. Radiated Limit

FCC Part 15, Subpart B, Class B

Frequency MHz	Distance Meters	Field Strengths Limit	
		$\mu\text{V}/\text{m}$	$\text{dB}(\mu\text{V})/\text{m}$
30 ~ 88	3	100	40.0
88 ~ 216	3	150	43.5
216 ~ 960	3	200	46.0
960 ~ 1000	3	500	54.0

5.3. Test Procedure

The EUT was placed on a non-conductive table whose total height equaled 80cm. All units of equipment forming the system under test (includes the EUT as well as connected peripherals and associated equipment or devices) shall be arranged such that a nominal 0.1 m separation is achieved between the neighboring units. Where the mains cable supplied by the manufacturer is longer than 1 m, the excess should be folded at the centre into a bundle no longer than 0.4 m, so that its length is shortened to 1 m.

The EUT was set 3 meters away from the receiving antenna that was mounted on a non-conductive mast. The antenna can move up and down between 1 to 4 meters to find out the maximum emission level.

The turntable can rotate 360 degree to determine the position of the maximum emission level.

The initial testing identified the frequency that has the highest disturbance relative to the limit while operating the EUT in typical modes of operation and cable positions in a test setup representative of typical system configuration.

The identification of the frequency of highest emission with respect to the limit was found by investigating emissions at a number of significant frequencies. The probable frequency of maximum emission had been found and that the associated cable and EUT configuration and mode of operation had been identified.

The bandwidth of the Receiver is set at 120 kHz.



Test results were obtained from the following equation:
Emission level (dB μ V/m) = Antenna Factor - Amp Factor + Cable Loss + Reading
Margin (dB) = Emission Level (dB μ V/m) - Limit (dB μ V/m)

5.4. Measuring Results

PASS.

Please refer to following pages.



Site:	843.3	Antenna::Horizontal	Temperature(C):26(C)
Limit:	FCC Part 15 B Radiation(QP)	Test Time:	Humidity(%):60%
EUT:	Flat Panel Vanity	Power Rating:	AC 120V/60Hz
M/N.:	SY-VAN-FP	Test Engineer:	Bast
Mode:	ON		
Note:			

No.	Frequency (MHz)	Reading Level(dBuV)	Factor (dB)	Measurement(dBuV)	Limit (dBuV)	Over (dB)	Detector	Comment
1	61.0245	33.90	-13.81	20.09	40.00	-19.91	QP	
2	106.9461	28.21	-11.20	17.01	43.50	-26.49	QP	
3 *	118.8095	38.74	-12.65	26.09	43.50	-17.41	QP	
4	130.8369	37.88	-14.06	23.82	43.50	-19.68	QP	
5	381.2487	25.96	-7.46	18.50	46.00	-27.50	QP	
6	550.9480	26.14	-4.27	21.87	46.00	-24.13	QP	

*:Maximum data x:Over limit !:over margin



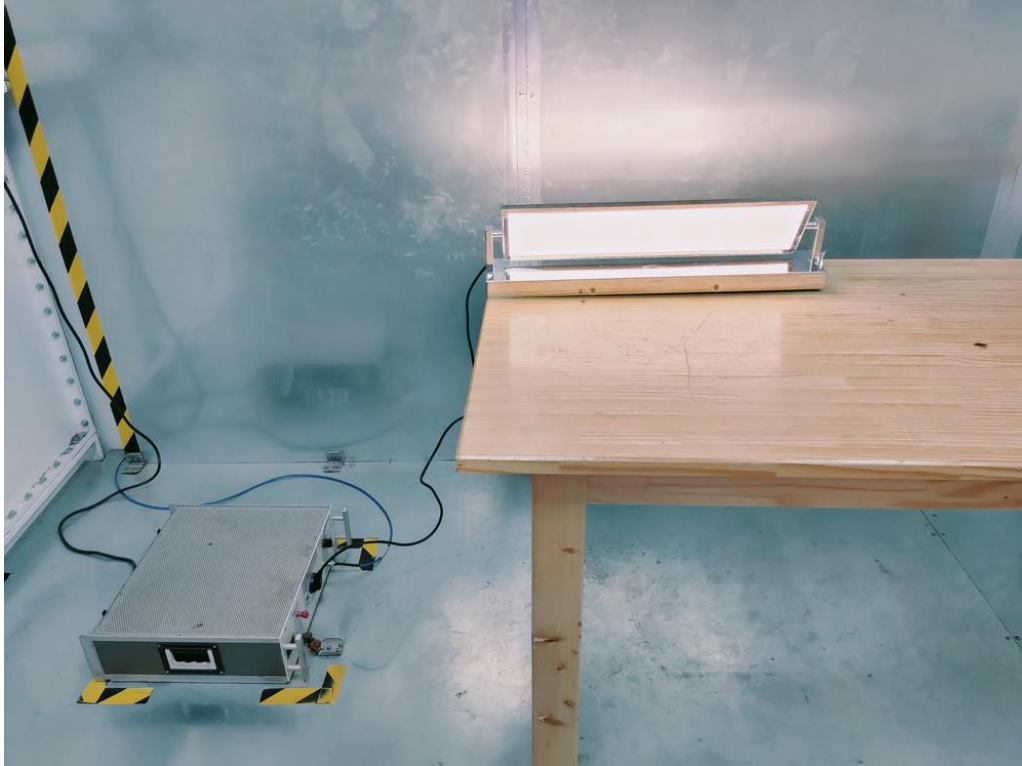
Site:	843.3	Antenna::Vertical	Temperature(C):26(C)
Limit:	FCC Part 15 B Radiation(QP)		Humidity(%):60%
EUT:	Flat Panel Vanity	Test Time:	2021-02-26
M/N.:	SY-VAN-FP	Power Rating:	AC 120V/60Hz
Mode:	ON	Test Engineer:	Bast
Note:			

No.	Frequency (MHz)	Reading Level(dBuV)	Factor (dB)	Measurement(dBuV)	Limit (dBuV)	Over (dB)	Detector	Comment
1	31.0705	39.52	-14.59	24.93	40.00	-15.07	QP	
2	47.3253	39.20	-12.23	26.97	40.00	-13.03	QP	
3 *	61.0245	46.02	-13.81	32.21	40.00	-7.79	QP	
4	71.4552	40.17	-15.83	24.34	40.00	-15.66	QP	
5	123.0494	35.89	-13.20	22.69	43.50	-20.81	QP	
6	337.2155	29.55	-8.02	21.53	46.00	-24.47	QP	

*:Maximum data x:Over limit !:over margin

6. PHOTOGRAPHS

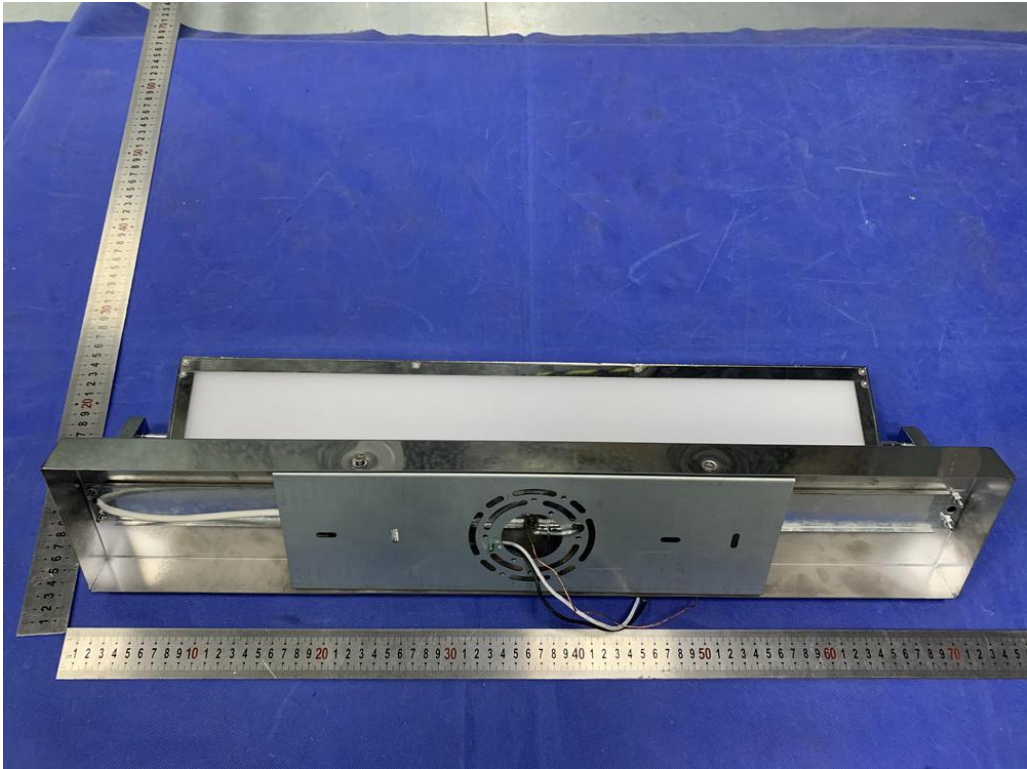
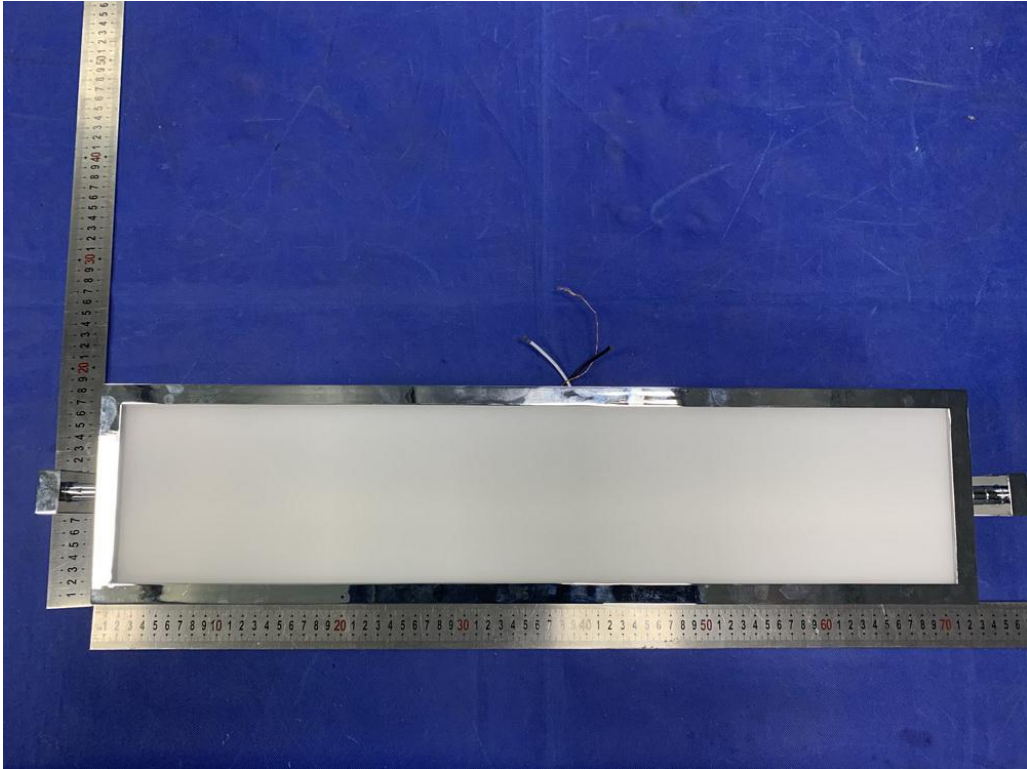
6.1. Photos of Conducted Emission Measurement

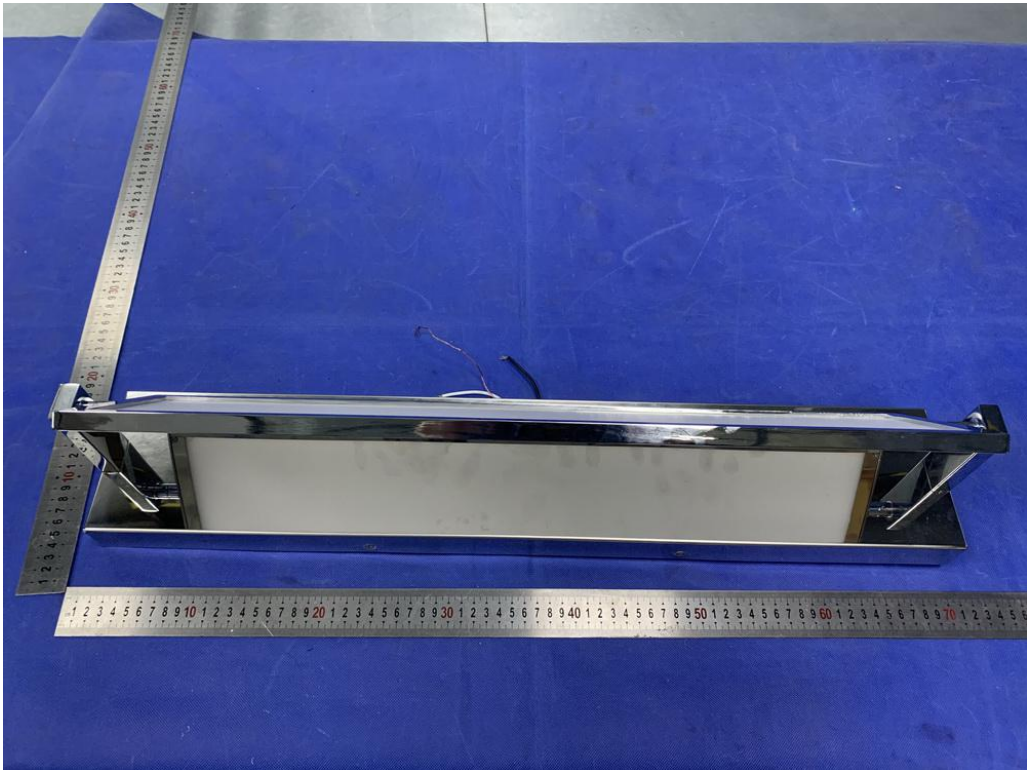
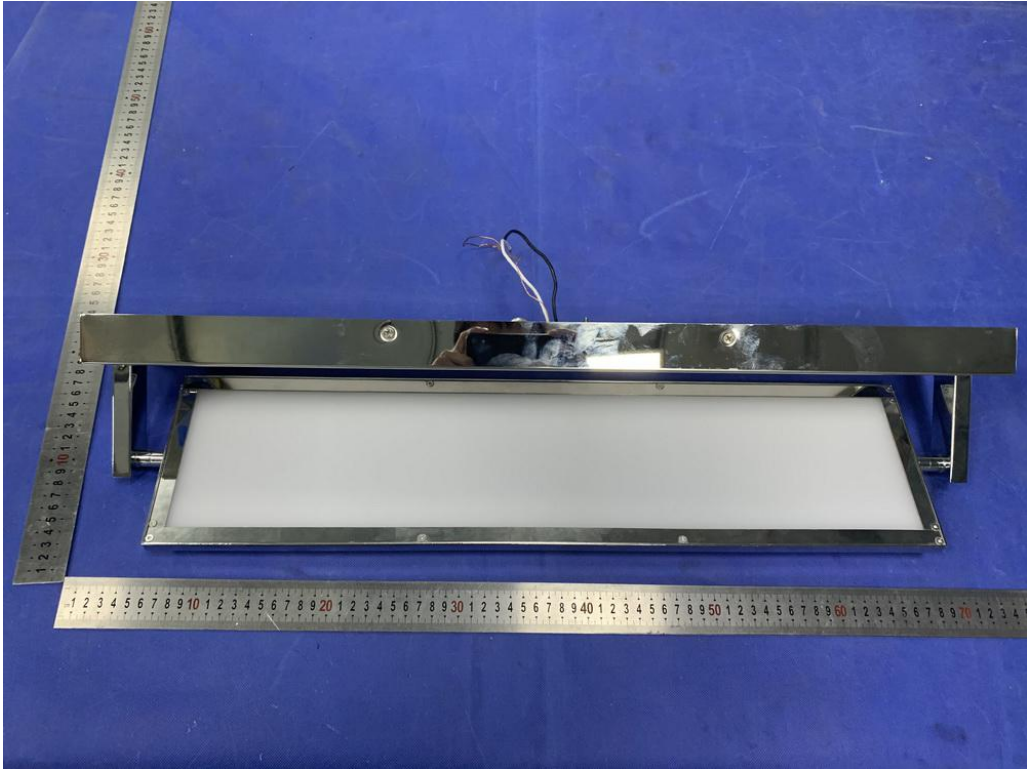


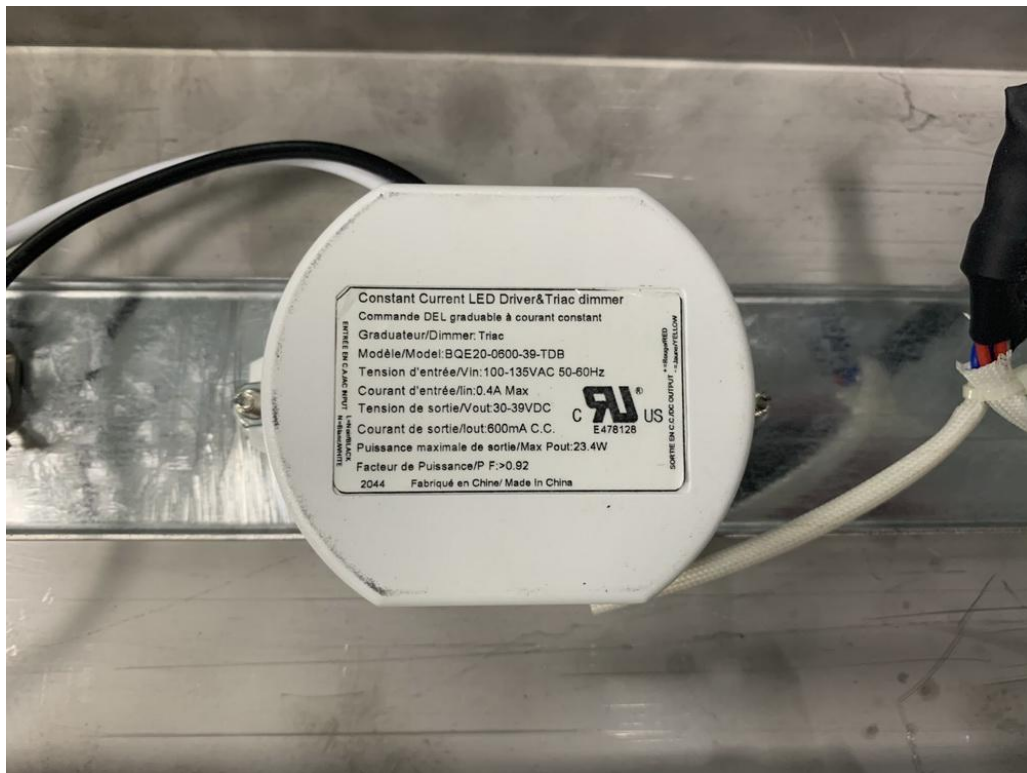
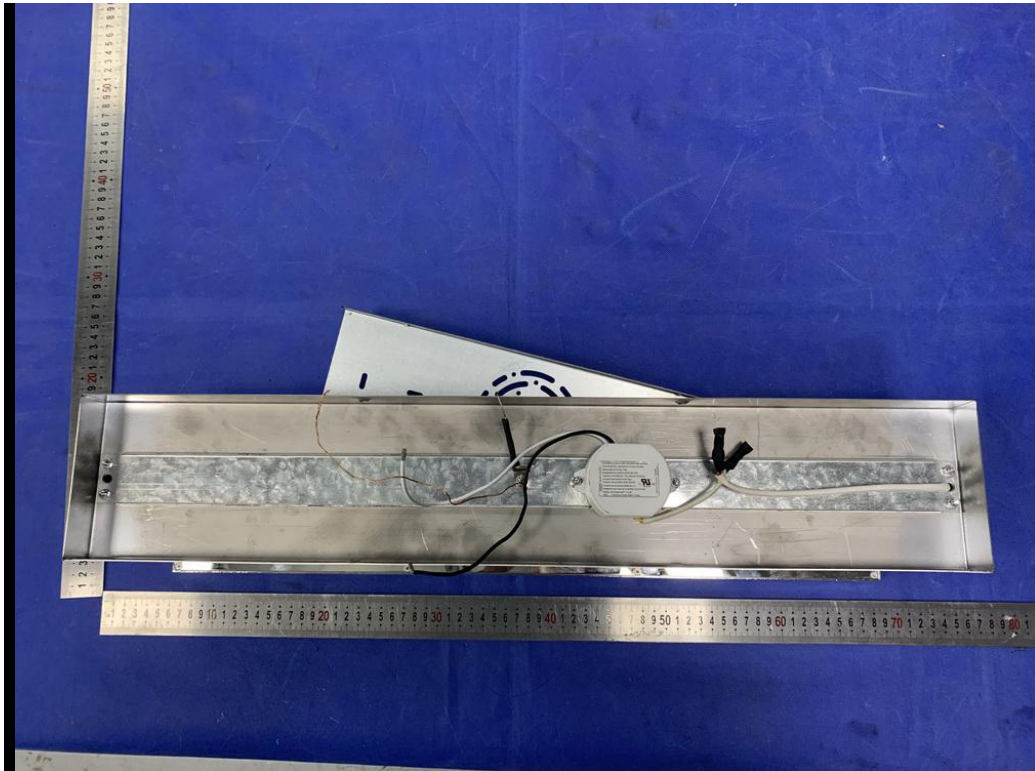
6.2. Photos of Radiation Emission Measurement



APPENDIX A: Photos of EUT

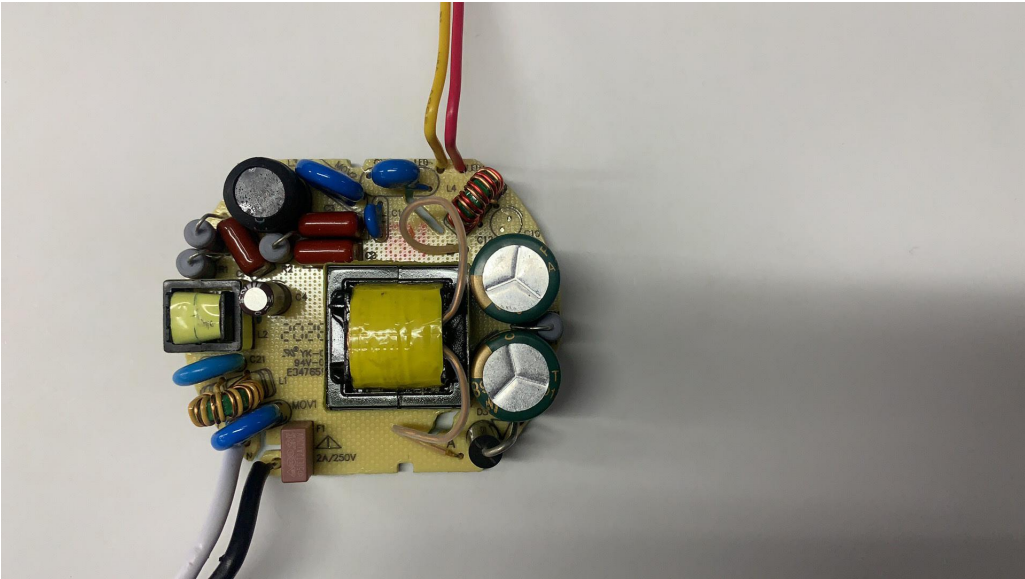
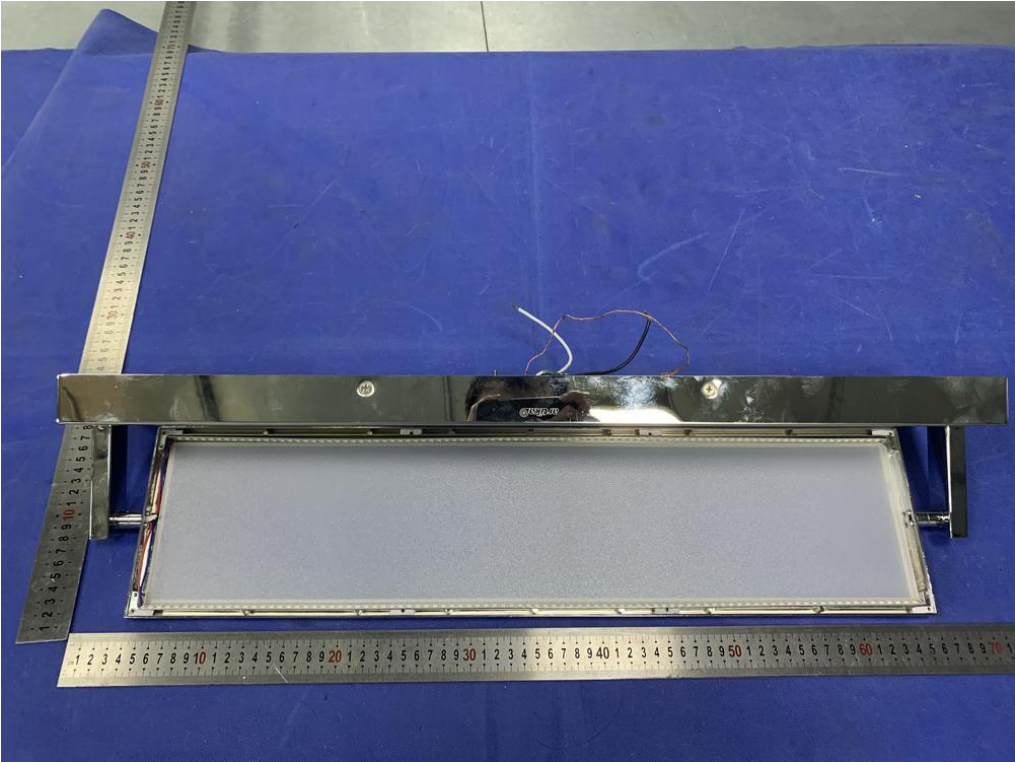


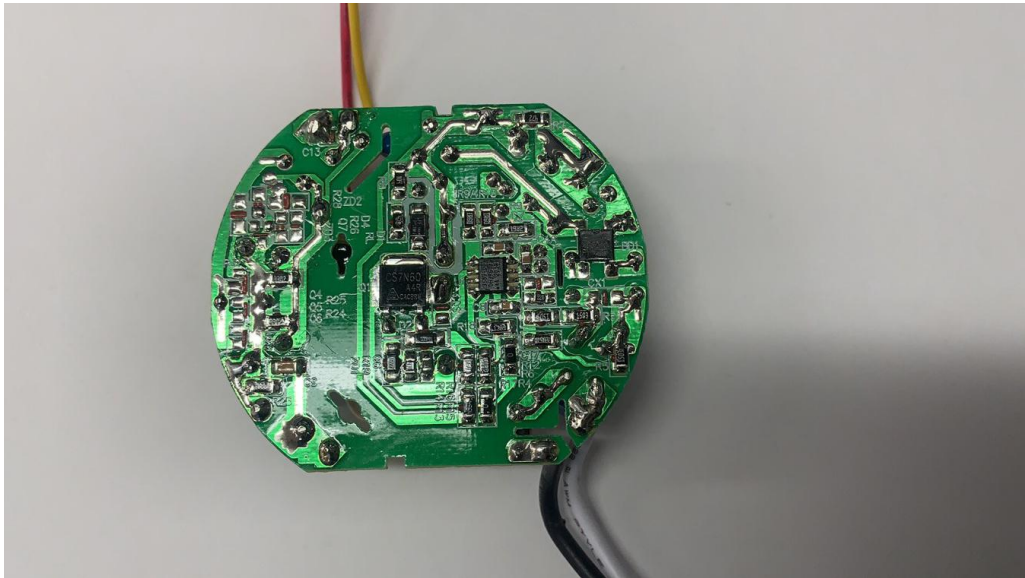




Constant Current LED Driver&Triac dimmer
Commande DEL graduable à courant constant
Graduateur/Dimmer: Triac
Modèle/Model: BQE20-0600-39-TDB
Tension d'entrée/Vin: 100-135VAC 50-60Hz
Courant d'entrée/Iin: 0.4A Max
Tension de sortie/Vout: 30-39VDC
Courant de sortie/Iout: 600mA C.C.
Puissance maximale de sortie/Max Pout: 23.4W
Facteur de Puissance/P F: >0.92
2044 Fabriqué en Chine/Made in China







-----The end-----