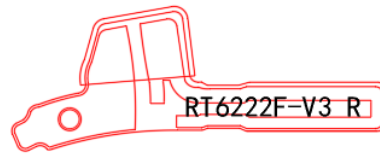
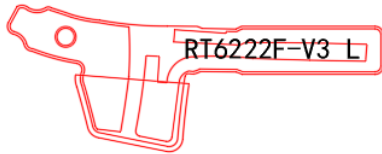


BT FPC Antenna (RT6222F-V3-L/R)

1. Explanation of Product Number

| | | | | | | | | | | | | | | |
|---|---|---|---|-----|-----|-----|-----|-----|---|---|---|---|---|---|
| S | 2 | B | 4 | B | B | 1 | F | 1 | B | 3 | 0 | 0 | 0 | 0 |
| | | | | (1) | (2) | (3) | (4) | (5) | | | | | | |



Product Description:

(1) Product Categories:

B:BT Antenna

(2) Dimensions:

B1:22.2*7.3*0.12 (mm)

(3) Material:

F: FPC

(4) Working Frequencies:

1B: 2.4G-2.5G

(5) Antenna Series:

01: Serial number

Tolerances (Unless otherwise specified)
 X : ± 1 X.X : ± 0.1 X.XX : ± 0.01
 Angle : ± Hole Dia. : ±



深圳市迎丰天线技术有限公司
 SHEN ZHEN YINGFENG ANTENNA TECHNOLOGY CO.,LTD

| | |
|---------------------|---------------------|
| Scale : | Unit : mm |
| Drawn By : Shelley | Checked By : Simon |
| Designed By : Simon | Approved By : Frank |

THIS SPECIFICATION IS THE PROPERTY OF UNICTRON TECHNOLOGIES CORPORATION AND SHALL NOT BE REPRODUCED OR USED IN ALL CIRCUMSTANCES WITHOUT WRITTEN PERMISSION

| | | | |
|---|----------|-----------------|------|
| TITLE : BT FPC Antenna(RT6222F-V3-L/R) | PART NO. | S2B4BB1F1B30000 | REV. |
| | | | B |

2. Features

- *Stable and reliable in performances
- *RoHS compliance
- *Low cost

3. Applications

- *BT

4. Description

* YINGFENMG FPC antenna series are specially designed for 2.4G-2.5G band application. Based on YINGFENG proprietary designs and processes, this FPC antenna has excellent stability and sensitivity to consistently provide high signal reception efficiency.

5. Antenna Electrical Specifications :

| Characteristics | Specifications | Unit | |
|--------------------|---------------------|----------|---------|
| Outline Dimensions | 22.2*7.3 *0.12 | mm | |
| Frequency | 2400~2500 | MHz | |
| Impedance | 50 | Ω | |
| Polarization | Linear Polarization | | |
| Return Loss Table | Return Loss | | |
| Freq.Band | 2.4G Hz | 2.45G Hz | 2.5G Hz |
| dB | -16.98 | -29.81 | 17.34 |
| VSWR Table | VSWR | | |
| Freq.Band | 2.4G Hz | 2.45G Hz | 2.5G Hz |
| | 1.32 | 1.08 | 1.29 |

Tolerances (Unless otherwise specified)

X : ± 1 X.X : ± 0.1 X.XX : ± 0.01

Angle : \pm

Hole Dia. : \pm



深圳市迎丰天线技术有限公司

SHEN ZHEN YINGFENG ANTENNA TECHNOLOGY CO.,LTD

Scale :

Unit : mm

Drawn By : Shelley

Checked By : Simon

Designed By : Simon

Approved By : Frank

THIS SPECIFICATION IS THE PROPERTY OF UNICTRON TECHNOLOGIES CORPORATION AND SHALL NOT BE REPRODUCED OR USED IN ALL CIRCUMSTANCES WITHOUT WRITTEN PERMISSION

TITLE : BT FPC Antenna(RT6222F-V3-L/R)

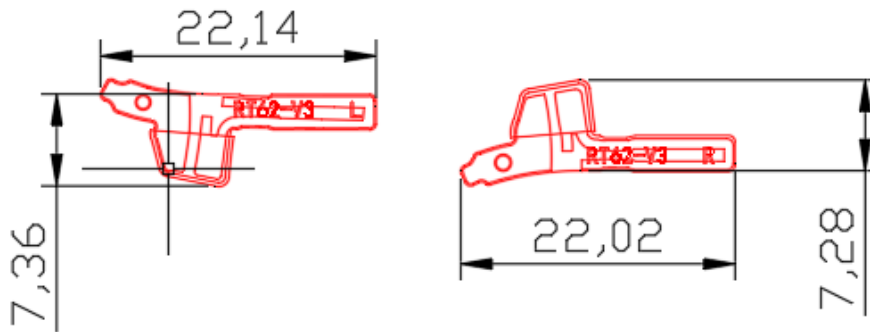
PART
NO.

S2B4BB1F1B30000

REV.

B

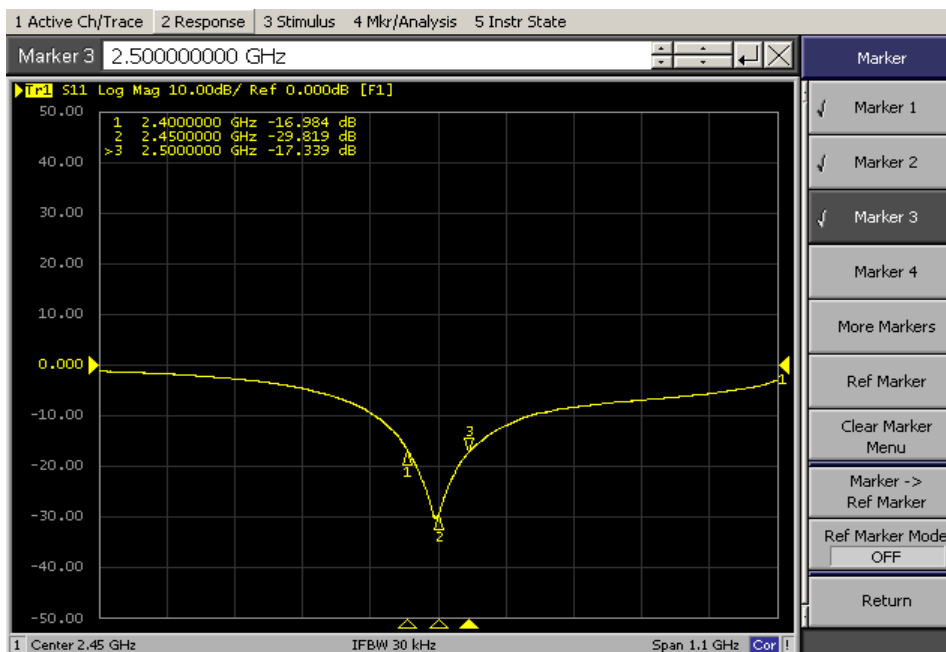
6. Dimensions (unit: mm)



blic errand: $\pm 0.2\text{mm}$

7. Measurement Characteristics:

(1) Return Loss



Tolerances (Unless otherwise specified)

X : ± 1 X.X : ± 0.1 X.XX : ± 0.01

Angle : \pm

Hole Dia. : \pm



深圳市迎丰天线技术有限公司

SHEN ZHEN YINGFENG ANTENNA TECHNOLOGY CO., LTD

Scale :

Unit : mm

Drawn By : Shelley

Checked By : Simon

Designed By : Simon

Approved By : Frank

THIS SPECIFICATION IS THE PROPERTY OF UNICTRON TECHNOLOGIES CORPORATION AND SHALL NOT BE REPRODUCED OR USED IN ALL CIRCUMSTANCES WITHOUT WRITTEN PERMISSION

TITLE : BT FPC Antenna(RT6222F-V3-L/R)

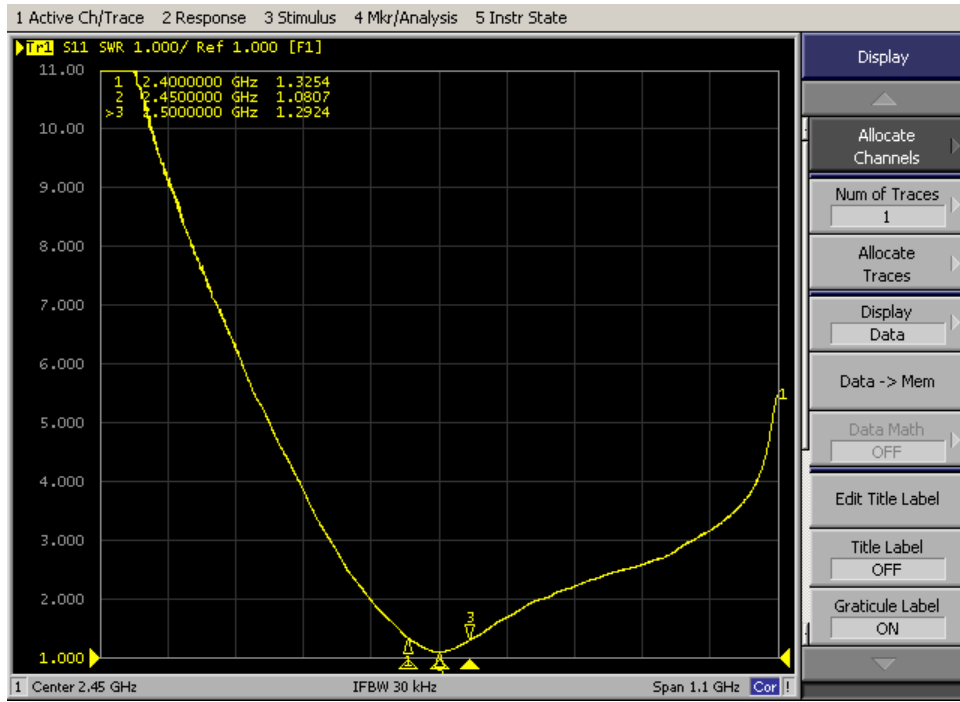
PART
NO.

S2B4BB1F1B30000

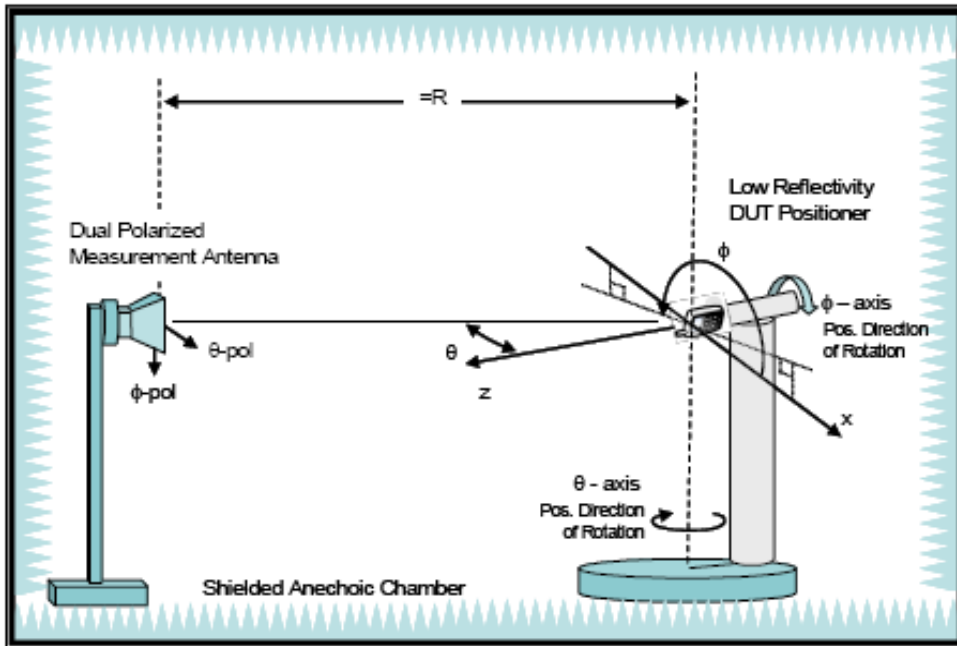
REV.

B

(2) VSWR



8. Three D Radiation Pattern measurements



Tolerances (Unless otherwise specified)
 X : ± 1 X.X : ± 0.1 X.XX : ± 0.01

Angle : \pm Hole Dia. : \pm

Scale : Unit : mm

Drawn By : Shelley Checked By : Simon

Designed By : Simon Approved By : Frank

TITLE : BT FPC Antenna(RT6222F-V3-L/R)



深圳市迎丰天线技术有限公司
 SHEN ZHEN YINGFENG ANTENNA TECHNOLOGY CO., LTD

THIS SPECIFICATION IS THE PROPERTY OF UNICTRON TECHNOLOGIES CORPORATION AND SHALL NOT BE REPRODUCED OR USED IN ALL CIRCUMSTANCES WITHOUT WRITTEN PERMISSION

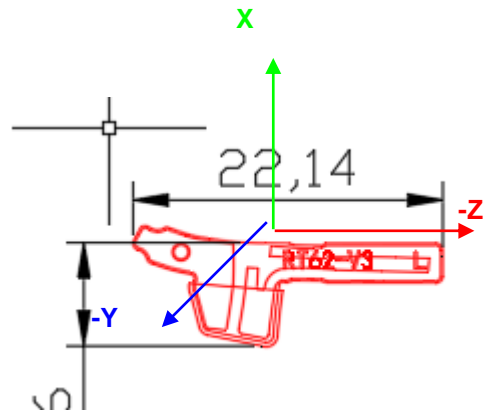
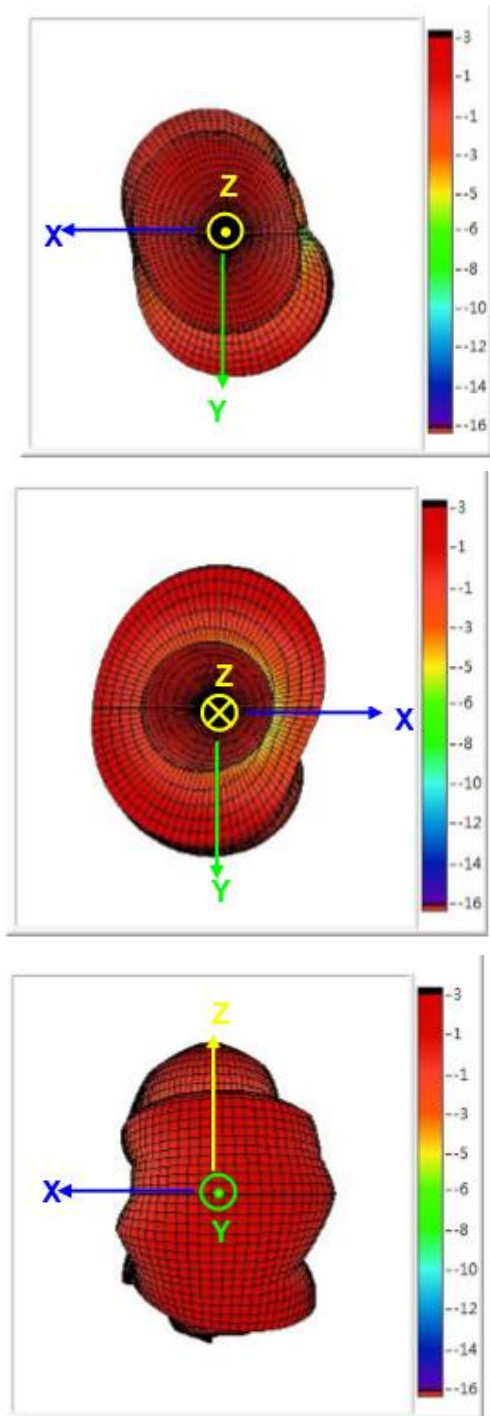
PART
NO.

S2B4BB1F1B30000

REV.
B

9.Radiation Pattern

9-1.3D Gain Pattern (Radiation Pattern at 2450 MHz)



Tolerances (Unless otherwise specified)
 X : ± 1 X.X : ± 0.1 X.XX : ± 0.01
 Angle : ± Hole Dia. : ±



深圳市迎丰天线技术有限公司
 SHEN ZHEN YINGFENG ANTENNA TECHNOLOGY CO., LTD

| | |
|---------------------|---------------------|
| Scale : | Unit : mm |
| Drawn By : Shelley | Checked By : Simon |
| Designed By : Simon | Approved By : Frank |

THIS SPECIFICATION IS THE PROPERTY OF UNICTRON TECHNOLOGIES CORPORATION AND SHALL NOT BE REPRODUCED OR USED IN ALL CIRCUMSTANCES WITHOUT WRITTEN PERMISSION

| | | | |
|---|----------|-----------------|------|
| TITLE : BT FPC Antenna(RT6222F-V3-L/R) | PART NO. | S2B4BB1F1B30000 | REV. |
| | | | B |

9-2.2D Gain complete machine (Radiation Pattern at 2450 MHz)

9-3.complete machine Efficiency Table

| | | | | | | |
|-----------------|-------|-------|-------|-------|-------|-------|
| Frequency(MHz) | 2400 | 2420 | 2450 | 2460 | 2480 | 2500 |
| Efficiency (dB) | -2.22 | -1.71 | -2.09 | -2.13 | -2.24 | -2.07 |
| Efficiency (%) | 27.9 | 29.3 | 30 | 29 | 28.7 | 26 |
| Gain (dBi) | 1.62 | 1.15 | 1.24 | 1.23 | 1.06 | 0.95 |

10.Revision Control:

| Revision | Date | Content | Remark |
|----------|-----------|-------------|--------|
| A | 2023-7-14 | New Issued. | N/A |

| | | | | |
|---|--------------------|---|------------------------|------------------|
| Tolerances (Unless otherwise specified) X : ± 1 X.X : ± 0.1 X.XX : ± 0.01 Angle : ± Hole Dia. : ± | |  深圳市迎丰天线技术有限公司 SHEN ZHEN YINGFENG ANTENNA TECHNOLOGY CO.,LTD | | |
| Scale : | Unit : mm | | | |
| Drawn By : Shelley | Checked By : Simon | THIS SPECIFICATION IS THE PROPERTY OF UNICTRON TECHNOLOGIES CORPORATION AND SHALL NOT BE REPRODUCED OR USED IN ALL CIRCUMSTANCES WITHOUT WRITTEN PERMISSION | | |
| Designed By :Simon | Approved By :Frank | | | |
| TITLE : BT FPC Antenna(RT6222F-V3-L/R) | | PART NO. | S2B4BB1F1B30000 | REV. B |
| PAGE 6 OF 6 | | | | |