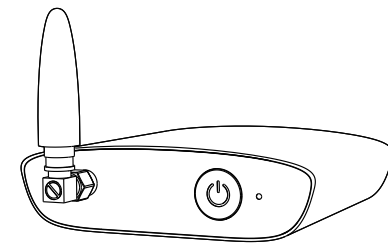


Hello

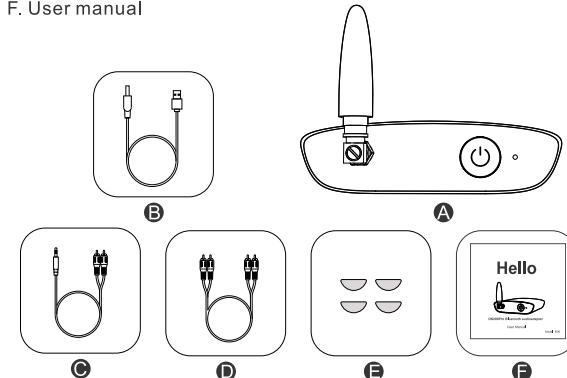


DS200Pro Bluetooth Audio Adapter
User Manual

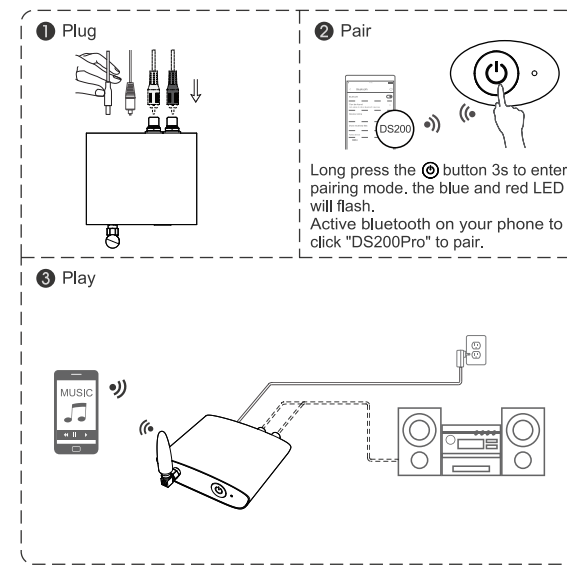
Model: DS200Pro

In the Box

- A. Wireless audio adapter
- B. USB power cable ×1
- C. 3.5mm to 2RCA splitter cable ×1
- D. 2RCA to 2RCA Stereo Audio Cable ×1
- E. Self adhesive feet bumpers x 4
- F. User manual



Installation diagram:

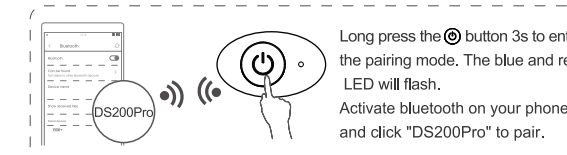


Application scenario:

It can turn all wired speaker into a Bluetooth one. Enjoy wireless music, free of harassing from any wires or cords.

Instructions for operation:

- 1) Connect your speaker to DS200Pro audio out port with the audio cable provided (3.5mm/RCA cable).
- 2) Connect DS200Pro to a power source with USB cable and adapter.
- 3) Short press button to power on.
- 4) Pairing - Pair DS200Pro with your bluetooth-enabled phone/PC/tablet.
 - Set DS200Pro into the pairing mode, the LED flashes Blue / Red alternately fast.
 - First-time use: DS200Pro will auto enter the pairing mode (with clear memory).
 - Afterward: Long press button 3s to enter the pairing mode. (The LED flashes Blue / Red alternately fast)
 - Activate bluetooth on your phone or another device and click "DS200Pro" to connect.
 - Wait and connected (For quick pairing, better keep them within 1 meter when pairing).
- 5) Enjoy your music.



Pair and connect two devices simultaneously:

- 1) Pair with the first device by following the previous instructions in the "Installation diagram" section.
- 2) Pair with the second device.
 - Long press button 3s to enter the pairing mode again, the LED will flash Blue and Red.
 - Activate bluetooth on the second device and click "DS200Pro" to pair.

Note: You can only play music on one device at a time, you need to pause the music on your device first to play music on the other one.

Warranty:

Warranty service is limited to normal use. Any man-made damages such as from connecting to an unsuitable power source, using an unsuitable device, or not following the instructions, as well as damages that did not occur during shipping, repairs and adjustments not approved by the company, damages from misuse, inattention, or improper installation may cause the warranty to be ineffective immediately. This warranty does not include shipping fees.

Wet Location Marking:

Apparatus shall not be exposed to dripping or splashing and no objects filled with liquids, such as vases, shall be placed on the apparatus.

Product Parameters:

- Model Number: DS200Pro
- Product Name: Hi-Fi Bluetooth Receiver (Bluetooth Adapter)
- Bluetooth Version: 5.0
- Audio codec: aptX, aptX-LT, SBC
- Operational range: indoors: up to 50-70ft (without obstacles)
outdoors: up to 164ft (without obstacles)
- Input voltage/ current: DC5V ≈ 500mA
- Operating temperature: -10°C ~ 45°C
- Storage temperature: -20°C ~ 60°C
- Product size: 105×90×26mm
- Product weight: 121g

FCC Notice

This device complies with Part 15 of the FCC Rules.

Operation is subject to the following two conditions:

- (1) This device may not cause harmful interference, and
- (2) this device must accept any interference received, including interference that may cause undesired operation.

NOTE 1: This equipment has been tested and found to comply with the limits for a Class B digital device, pursuant to part 15 of the FCC Rules. These limits are designed to provide reasonable protection against harmful interference in a residential installation.

This equipment generates, uses and can radiate radio frequency energy and, if not installed and used in accordance with the instructions, may cause harmful interference to radio communications.

However, there is no guarantee that interference will not occur in a particular installation.

If this equipment does cause harmful interference to radio or television reception, which can be determined by turning the equipment off and on, the user is encouraged to try to correct the interference by one or more of the following measures:

- Reorient or relocate the receiving antenna.

- Increase the separation between the equipment and receiver.
- Connect the equipment into an outlet on a circuit different from that to which the receiver is connected.

- Consult the dealer or an experienced radio/TV technician for help.

NOTE 2: Any changes or modifications to this unit not expressly approved by the party responsible for compliance could void the user's authority to operate the equipment.

Radiation Exposure Statement

This equipment complies with FCC radiation exposure limits set forth for an uncontrolled environment. This equipment should be installed and operated with minimum distance 20cm between the radiator and your body.



<https://1mii.com/download-2/>

Scan the code to get more language instructions.

扫描二维码以获取更多语言使用说明书。

Scannen Sie den Code, um weitere Sprachanweisungen zu erhalten.

Escanee el código para obtener más instrucciones de idioma.

Scannez le code pour obtenir plus d'instructions linguistiques.

コードをスキャンして、より多くの言語の説明を取得します。

lavaudio

Any questions? Contact:

support@1mii.com (Response Time: 4-24h, excl. holidays)

MANUFACTURER

ShenZhen 1Mii Technologies Limited.

Address: 4th Fl, Bldg B, Runfeng Industrial Park, No. 4197 Baoan Blvd., Gushu Community, Xixiang St., Baoan Dist., Shenzhen, China.

FCC ID: 2AUFR-RT933



www.1mii.com

MADE IN CHINA

说明书折页 105g铜板纸

说明书折叠后成品尺寸：90X90mm