

Hello



Bluetooth Digital Amplifier Receiver
User Manual

Model: B0308

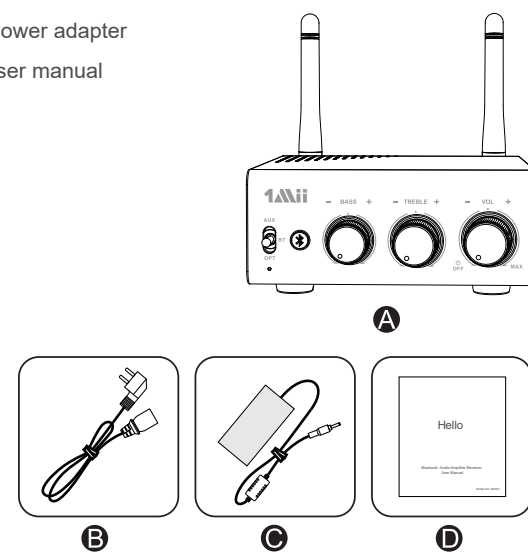
1. Product specifications

B08+ is a Bluetooth receiver with power amplifier function, and also supports Aux analog, optical wired audio input. B08+ uses the high-end, Qualcomm chip Support aptX-HD function, you can enjoy high-quality music while experiencing the convenience of wireless.

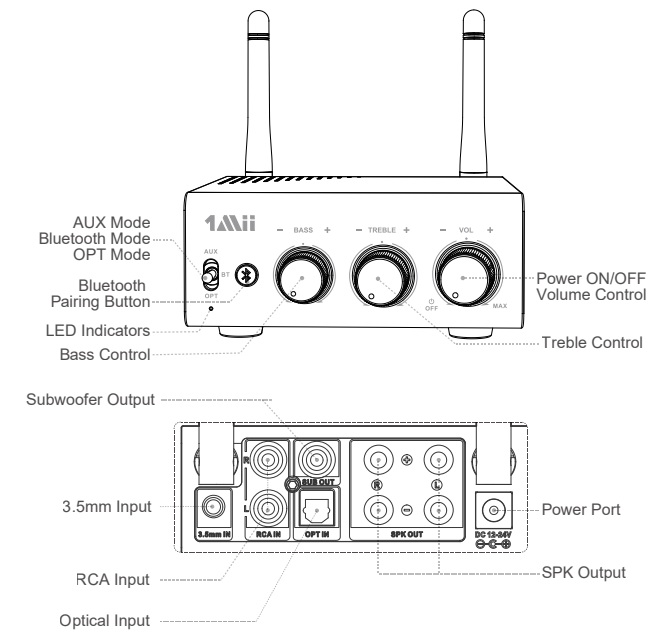
- Supports profiles: A2DP, AVRCP
- Audio codec: aptX, aptX-HD, SBC
- Operational range: Indoors: up to 50-70ft (without obstacles)
Outdoors: up to 197ft (without obstacles)
- Input voltage/ current: DC24V 4A
- Operating temperature: -10°C ~ 45°C
- Storage temperature: -20°C ~ 60°C
- Support sampling rate in optical mode: ≤ 48KHz
- Product size: 136 × 101 × 45 mm
- Product weight: B08+: 230g

2. Package contents

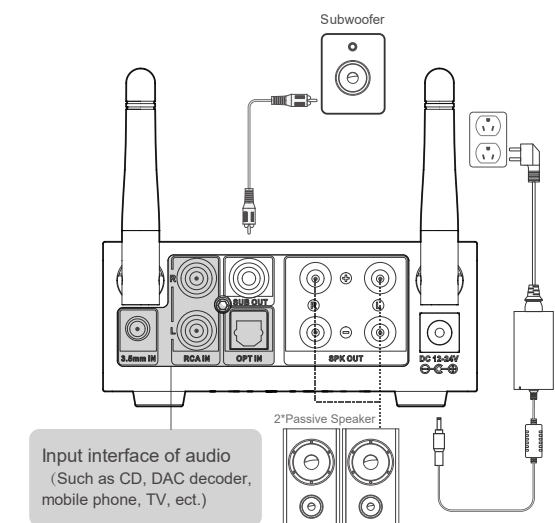
- A. Bluetooth Digital Amplifier Receiver
- B. AC Power cable
- C. Power adapter
- D. User manual



3. Product overview & control function



4. Installation diagram



Any questions? Contact:
support@1mii.com
(Response Time: 4-24h, excl. holidays)

MANUFACTURER
ShenZhen 1Mii Technologies Limited.
Address: 4th Fl, Bldg B, Runfeng Industrial Park, No. 4197 Baoan Blvd.,
Gushu Community, Xixiang St., Baoan Dist., Shenzhen, China.

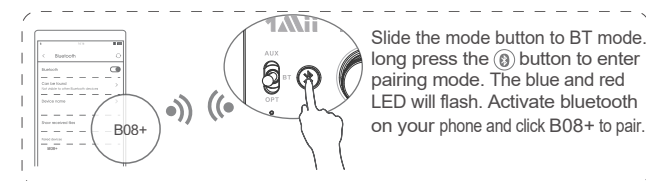
FCC ID: 2AUFR-RT908



www.1mii.com

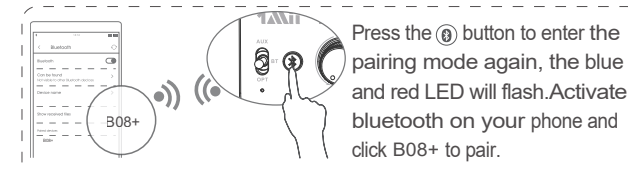
MADE IN CHINA

- 1) Connect your speaker to B08+ Audio Out port with the audio cable.
- 2) Connect B08+ to a power source.
 1. Plug the power cord into the "DC in" port.
 2. Plug the Power supply into an AC (mains) power outlet.
- 3) Turn the volume knob to the right to Power on, slide the mode button to BT mode (if you want use wired audio source, choose the AUX or OPT accordingly)
- 4) Pairing - Pair B08+ with your bluetooth-enabled phone/PC/ tablet.
 - Set B08+ into the pairing mode, the LED flashes Blue / Red alternately fast.
 - First-time use: B08+ will auto enter the pairing mode (with clear memory).
 - Afterward: Long press (P) button to enter the pairing mode. (The LED flashes Blue / Red alternately fast)
 - Activate bluetooth on your phone or another device and click B08+ to connect.
 - Wait and connected (For quick pairing, better keep them within 1 meter when pairing).
- 5) Enjoy your music.



5. Pair and connect two devices simultaneously

- 1) Pair with the first device by following the previous instructions in the "Installation diagram" section.
- 2) Pair with the second device.
 - Long press (P) button to enter the pairing mode again, the LED will flash Blue and Red.
 - Activate bluetooth on the second device and click B08+ to pair.



Note: You can only play music on one device at a time, you need to pause the music on your device first to play music on the other one.

6. Restore factory default settings

You may need to reset B08+ if it is not working as expected. When B08+ is reset to factory default settings, all the paired device information will be cleared.

- Hold the (P) button together 10s until the LED flashes Blue and Red.

Frequently Asked Questions:

- Q: All cables are connected, but no sound out put?
A: 1. Check if the POWER indicator is on, and turn on the POWER if it is not on. When the indicator light is still not on after turn on the power, you can find a laptop power and connect to test whether it is the machine fault or a power failure.
2. If the indicator or light is on, check whether the VOL knob is in the minimum position.
If so, turn clockwise to normal Volume
3. If both of the above are normal, check the input device if it is paused, mute, or the volume is minimized.
- Q: Why do loudspeakers make a lot of electric noise?
A: If you are not using the original factory standard power supply, please replace the power supply before testing. Many power supply in the market have large interference coefficient, which will cause a lot of current sound.
- Q: Why connect signal line, not play music have interferencesound?
A: If you use unshielded signal lines, there will be interference signals enter the power amplifier. If you hate the sound, you are advised to use the shielded signal lines or unplug the signal lines.

Warnings

Warranty service is limited to normal use. Any man-made damages such as from connecting to an unsuitable power source, using an unsuitable device, or not following the instructions, as well as damages that did not occur during shipping, repairs and adjustments not approved by the company, damages from misuse, inattention, or improper installation may cause the warranty to be ineffective immediately. This warranty does not include shipping fees.

Disposal



Always dispose of the used appliance at a recycling centre. Do not dispose the used appliance together with household waste.



<https://1mii.com/download-2/>
Scan the code to get more language instructions.
扫描二维码以获取更多语言使用说明书。
Scannen Sie den Code, um weitere Sprachanweisungen zu erhalten.
Escanee el código para obtener más instrucciones de idioma.
Scannez le code pour obtenir plus d'instructions linguistiques.
コードをスキャンして、より多くの言語の説明を取得します。

说明书黑白折页 105g铜板纸
折页品尺寸: 98X110mm

项目名称	RT907	备注	
物料名称	RT908 说明书	版本	VER:3.0
物料编号	06908207001	制作	Winson
物料尺寸	98*110mm	日期	2020/09/09

FCC Warning

This device complies with part 15 of the FCC rules. Operation is subject to the following two conditions: (1) this device may not cause harmful interference, and (2) this device must accept any interference received, including interference that may cause undesired operation.

Changes or modifications not expressly approved by the party responsible for compliance could void the user's authority to operate the equipment.

NOTE: This equipment has been tested and found to comply with the limits for a Class B digital device, pursuant to part 15 of the FCC Rules. These limits are designed to provide reasonable protection against harmful interference in a residential installation. This equipment generates uses and can radiate radio frequency energy and, if not installed and used in accordance with the instructions, may cause harmful interference to radio communications. However, there is no guarantee that interference will not occur in a particular installation. If this equipment does cause harmful interference to radio or television reception, which can be determined by turning the equipment off and on, the user is encouraged to try to correct the interference by one or more of the following measures:

- Reorient or relocate the receiving antenna.
- Increase the separation between the equipment and receiver.
- Connect the equipment into an outlet on a circuit different from that to which the receiver is connected.
- Consult the dealer or an experienced radio/TV technician for help.

Radiation Exposure Statement

This equipment complies with FCC radiation exposure limits set forth for an uncontrolled environment. This equipment should be installed and operated with minimum distance 20cm between the radiator and your body.