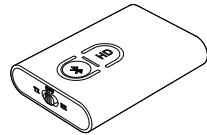


Hello



Bluetooth Transmitter and Receiver 2-in-1 ML300 User Manual

Model: ML300

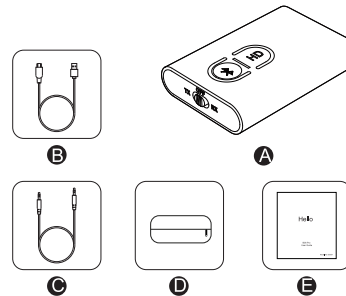
Product specifications

ML300 is a wireless long range audio transmitter & receiver incorporating the latest "aptX low-latency" technology for CD-like quality sound with virtually no delay. Providing the best solution to enable your TV or home audio system to wirelessly stream hi-fi audio directly to any wireless headphones or speakers.

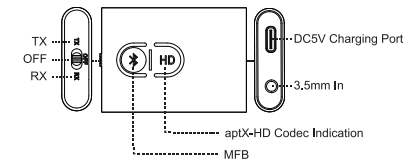
- Supports profiles: A2DP, AVRCP
- Audio codec: aptX, aptX-L, SBC
- Operational range: 32 ~ 50ft (without obstacles)
- Input voltage/ current: Micro USB DCSV \approx 500mA
- Operating temperature: $-10^{\circ}\text{C} \sim 45^{\circ}\text{C}$
- Storage temperature: $-20^{\circ}\text{C} \sim 60^{\circ}\text{C}$
- Support sampling rate in optical mode: $\leq 48\text{KHz}$
- Product size: $53 \times 37.5 \times 11 \text{ mm}$
- Product weight: 18g

Package contents

- Wireless audio transceiver
- 5V power cable
- 3.5-3.5 audio cable
- Travel case
- User manual



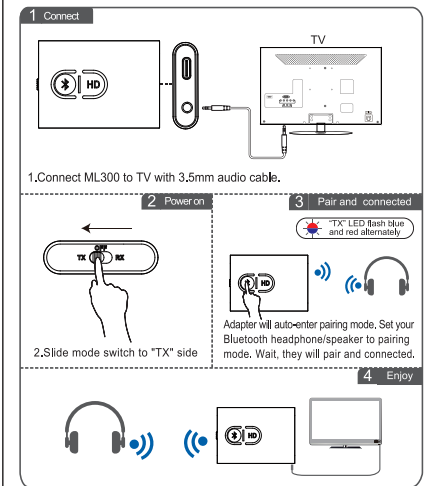
Product overview&Basic operation



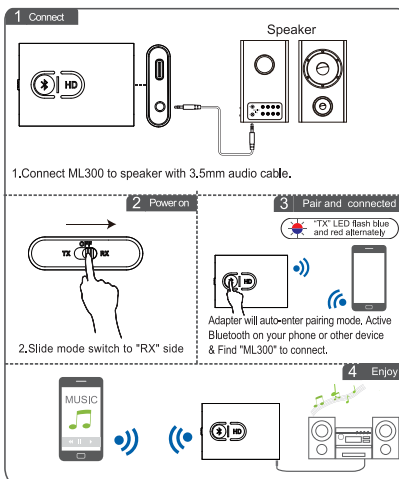
Button	Function	Operation
HD	aptX+HD codec mode	aptX high definition priority switching.
	Enter pairing mode	Hold this button for about 2 seconds.
TX	Transmitter mode	Slide to TX to enter transmitting mode
OFF	Power off	Slide to "OFF" to turn off the device
RX	Receiver mode	Slide to RX to enter receiving mode

Status	LED Indicator
Pairing mode	LED flashes fast blue and red
Connected 1 device	LED stays blue
Connected 2 device	LED stays purple
Disconnected	LED flashes blue once every 3 seconds
Restored factory default settings	All Leds flash 1 time
aptX+HD codec mode	HD LED stays blue

As a Wireless Transmitter(TX mode)



As a Wireless Receiver (RX mode)



Warnings

Warranty service is limited to normal use only. Any man-made damages such as connecting to an unsuitable power source, using an unsuitable device, or not following the instructions, damages by misusing the product, careless use of the equipment, or improper installation, repairs and adjustments not approved by the company as well as damages that did not occur during shipping may cause the warranty to be ineffective immediately. This warranty does not include shipping fees.

Disposal

Always dispose of the used appliance at a recycling centre. Do not dispose the used appliance together with household waste.

FCC Notice

This device complies with Part 15 of the FCC Rules. Operation is subject to the following two conditions: (1) This device may not cause harmful interference, and (2) this device must accept any interference received, including interference that may cause undesired operation.

NOTE 1: This equipment has been tested and found to comply with the limits for a Class B digital device, pursuant to part 15 of the FCC Rules.

These limits are designed to provide reasonable protection against harmful interference in a residential installation.

This equipment generates, uses and can radiate radio frequency energy and, if not installed and used in accordance with the instructions, may cause harmful interference to radio communications.

However, there is no guarantee that interference will not occur in a particular installation.

If this equipment does cause harmful interference to radio or television reception, which can be determined by turning the equipment off and on, the user is encouraged to try to correct the interference by one or more of the following measures:

- Reorient or relocate the receiving antenna.
- Increase the separation between the equipment and receiver.
- Connect the equipment into an outlet on a circuit different from that to which the receiver is connected.
- Consult the dealer or an experienced radio/TV technician for help.

The device has been evaluated to meet general RF exposure requirement. The device can be used in portable exposure condition without restriction.

NOTE 2: Any changes or modifications to this unit not expressly approved by the party responsible for compliance could void the user's authority to operate the equipment.

Miilink

Any questions? Contact:
support@1mii.com
(Response Time: 4-24h, excl. holidays)

MANUFACTURER
ShenZhen 1Mii Technologies Limited.

FCC ID: 2AUFR-RT239



www.1mii.com

MADE IN CHINA