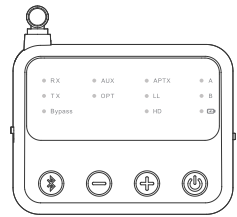


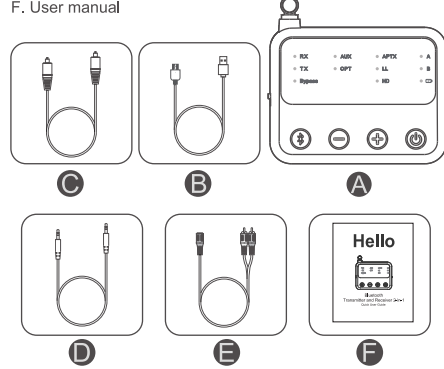
Hello



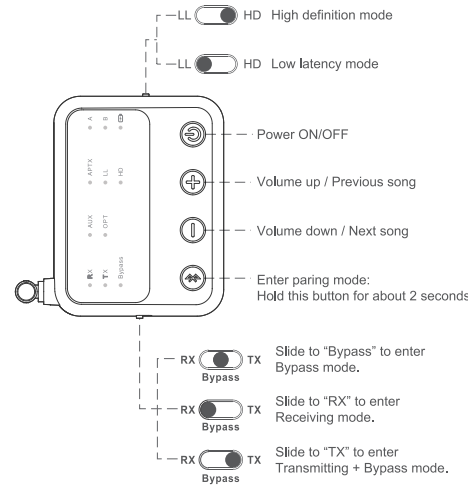
Bluetooth Transmitter and Receiver 2-in-1 User Manual

In the Box

- A. Bluetooth adapter
- B. 5V power cable
- C. Optical cable
- D. 3.5mm audio cable
- E. 3.5mm to RCA cable
- F. User manual



Product overview & Basic operation



Basic operation

Button	Function	Operation
LL HD	Low latency mode	Slide to LL to enter low latency mode
LL HD	High definition mode	Slide to HD to enter high definition mode
TX Bypass	Transmitter mode	Slide to TX to enter transmitting + bypass mode
TX Bypass	Receiver mode	Slide to RX to enter receiving mode
Bypass	Bypass mode	Slide to "Bypass" to enter Bypass mode
Enter pairing mode	Enter pairing mode	Hold this button for about 2 seconds
Reconnect	Reconnect	Short press once
Restored factory default settings	Restored factory default settings	Hold this button for about 10 seconds All the LED flashes together 2 times
Volume down/ Previous song	Volume down/ Previous song	Short press once Press 1 second
Volume up/ Next song	Volume up/ Next song	Short press once Press 1 second
Power on Power off	Power on Power off	Short press to power on Press and hold 1 second to power off

Qualcomm aptX is a product of Qualcomm Technologies, Inc. and/or its subsidiaries.

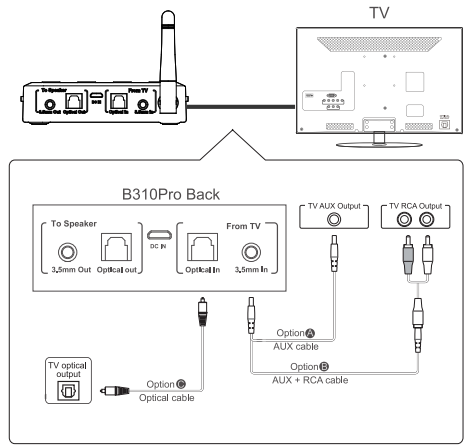
Status indicators

Indicator	Status
RX	In receiving mode
RX	Flashes Blue and Red alternately to indicate B310Pro in pairing mode
TX	In transmitting + bypass mode
TX	Flashes Blue and Red alternately to indicate B310Pro in pairing mode
Bypass Bypass mode	
LL	Connected with aptX low latency or Fast stream codec
HD	Connected with aptX HD codec
APT X	Connected with APTX codec
A	Device 1 is connected
B	Device 2 is connected
AUX	AUX audio mode
OPT	Optical audio mode
	The charging indicator is steady red during the charging. When the battery is fully charged, all lights are off.

Note: If B310Pro fail to pair, hold 3 button for 2s to enter pairing mode. Pair with the second device. Set second headphones/speaker to pairing mode. Wait until connected. Set B310Pro to pairing mode again, hold the 3 button for 2s until the TX LED flashes Blue and Red.

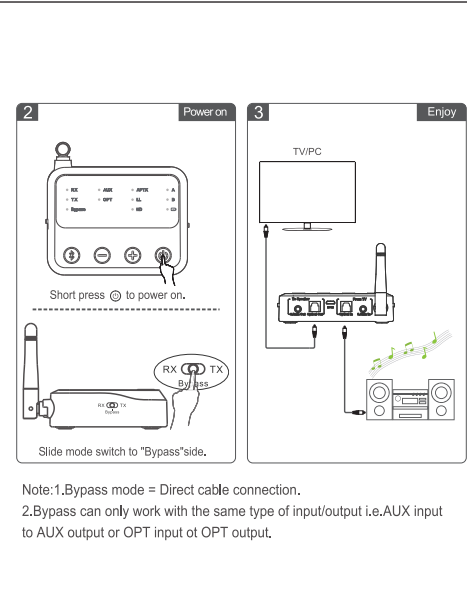
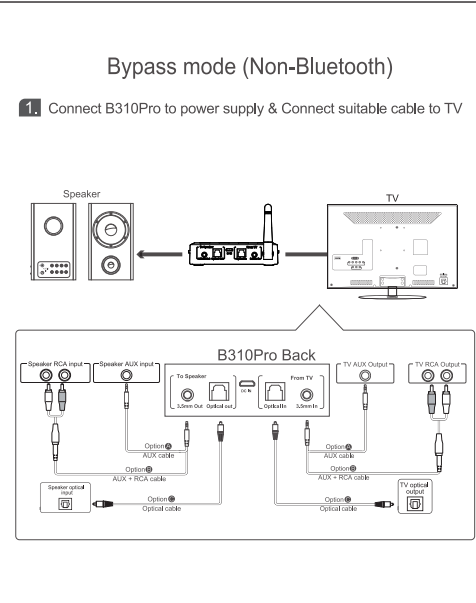
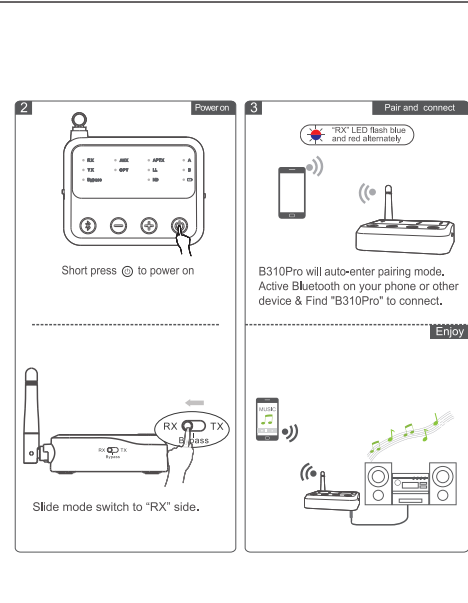
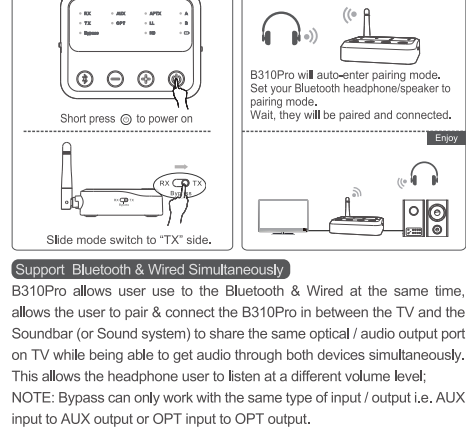
As a Wireless Transmitter(TX mode)

1. Connect B310Pro to power supply & Connect suitable cable to TV



As a Wireless Receiver (RX mode)

1. Connect B310Pro to power supply & Connect suitable cable to speaker



Q&As

1) I am having trouble pairing and connecting to my Bluetooth device. Please check the following:
 1. Your wireless device supports the wireless profiles listed in the specifications.
 2. B310Pro and your device are next to each other or within 3 feet / 1 meter.
 3. Make sure both B310Pro and the wireless device are in pairing mode.
 2) After connecting and pairing with my wireless device, I cannot hear any music from my sound system.
 Note: Need to make sure TV audio format is set to PCM (Fig-1) and TV sound out as "External Speakers" (Fig-2)

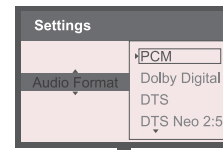


Fig-1 Set your TV Audio Format to "PCM" (IMPORTANT)

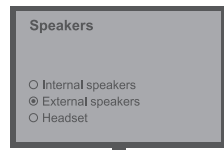


Fig-2 Set your TV Speaker to "External Speaker"

Warnings


Warranty service is limited to normal use only. Any man-made damages such as connecting to an unsuitable power source, using an unsuitable device, or not following the instructions, damages by misusing the product, careless use of the equipment, or improper installation, repairs and adjustments not approved by the company as well as damages that did not occur during shipping may cause the warranty to be ineffective immediately. This warranty does not include shipping fees.

Disposal

Always dispose of the used appliance at a recycling centre. Do not dispose the used appliance together with household waste.

FCC Notice

This device complies with Part 15 of the FCC Rules. Operation is subject to the following two conditions:
 (1) This device may not cause harmful interference, and (2) this device must accept any interference received, including interference that may cause undesired operation.
 NOTE 1: This equipment has been tested and found to comply with the limits for a Class B digital device, pursuant to part 15 of the FCC Rules.
 These limits are designed to provide reasonable protection against harmful interference in a residential installation.
 This equipment generates, uses and can radiate radio frequency energy and, if not installed and used in accordance with the instructions, may cause harmful interference to radio communications.
 However, there is no guarantee that interference will not occur in a particular installation.
 If this equipment does cause harmful interference to radio or television reception, which can be determined by turning the equipment off and on, the user is encouraged to try to correct the interference by one or more of the following measures:
 - Reorient or relocate the receiving antenna.

- Increase the separation between the equipment and receiver.
 - Connect the equipment into an outlet on a circuit different from that to which the receiver is connected.
 - Consult the dealer or an experienced radio/TV technician for help.
 NOTE 2: Any changes or modifications to this unit not expressly approved by the party responsible for compliance could void the user's authority to operate the equipment.
 Radiation Exposure Statement
 The device has been evaluated to meet general RF exposure requirement. The device can be used in portable exposure condition without restriction.

<https://1mii.com/download-2/>
 Scan the code to get more language instructions.
 扫描二维码以获取更多语言使用说明书。
 Scannen Sie den Code, um weitere Sprachanweisungen zu erhalten.
 Escanee el código para obtener más instrucciones de idioma.
 Scannez le code pour obtenir plus d'instructions linguistiques.
 コードをスキャンして、より多くの言語の説明を取得します。



Any questions? Contact: support@1mii.com (Response Time: 4-24h, excl. holidays)

MANUFACTURER

Shenzhen 1Mii Technologies Limited.
 Address: 4th Fl, Bldg B, Runfeng Industrial Park, No. 4197 Baoan Blvd., Gushu Community, Xixiang St., Baoan Dist., Shenzhen, China.

FCC ID: 2AUFR-RT230



www.1mii.com

MADE IN CHINA

105g铜版纸折页+黑白印刷

项目名称	RT230	备注	
物料名称	RT230 说明书	版本	VER:1.0
物料编号	06727207200	制作	Winson
物料尺寸	80*65mm	日期	2020/09/17