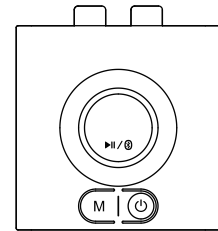


Hello

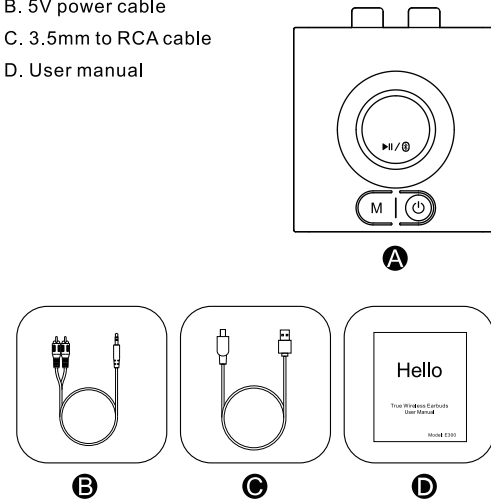


Wireless Audio Receiver
ML200 User Manual

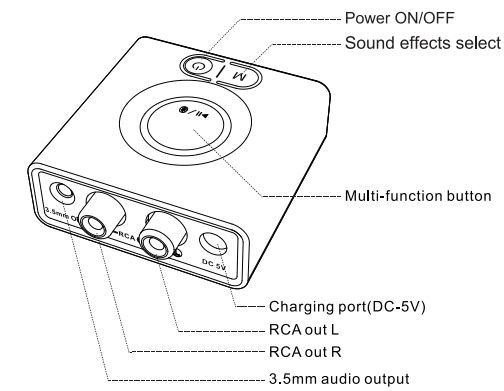
Model: ML200

In the Box

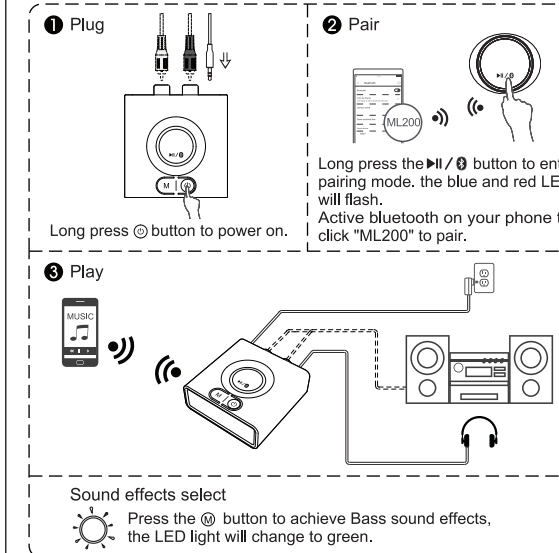
- A. Bluetooth adapter
- B. 5V power cable
- C. 3.5mm to RCA cable
- D. User manual



Product Description



Installation diagram

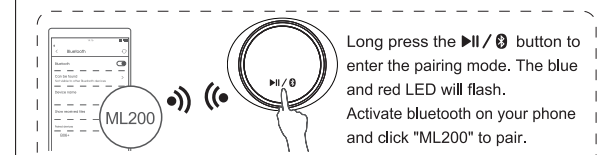


Application scenario

It can turn all wired speaker into a Bluetooth one.
Enjoy wireless music, free of harassing from any wires or cords.

Instructions for operation

- 1) Connect your speaker to ML200 audio out port with the audio cable provided (3.5mm/RCA cable).
- 2) Press button to power on.
- 3) Pairing - Pair ML200 with your bluetooth-enabled phone/PC/tablet.
 - Set ML200 into the pairing mode, the LED flashes Blue / Red alternately fast.
 - First-time use: ML200 will auto enter the pairing mode (with clear memory).
 - Afterward: Long press button to enter the pairing mode. (The LED flashes Blue / Red alternately fast)
 - Activate bluetooth on your phone or another device and click "ML200" to connect.
 - Wait for the connected (For quick pairing, better keep both devices within 1 meter when pairing).
- 4) Enjoy your music.



Pair and connect two devices simultaneously:

- 1) Pair with the first device by following the previous instructions in the "Installation diagram" section.
- 2) Pair with the second device.
 - Long press button to enter the pairing mode again, the LED will flash Blue and Red.
 - Activate bluetooth on the second device and click "ML200" to pair.

Note: You can only play music on one device at a time, therefore, if you want to play a music on the second device, you need to pause the music on your first device before you play it.

Charging method

-Plug in the charging cable to charge the receiver, the LED runs in steady red. When the battery is fully charged, the indicator will off.

Reset device

If the receiver cannot be connected or work properly, please refer to the following method to reset the device:
press and hold the multi-function button for 10 seconds, the lights flash purple alternately 3 times, Then restart the device, clear the device's connection record, reset successfully.

Product Parameters:

- Model Number: ML200
- Product Name: Bluetooth Receiver
- Bluetooth Version: 5.0
- Operational range: indoors: up to 50-70ft (without obstacles)
outdoors: up to 164ft (without obstacles)
- Input voltage/ current: DC5V=500mA
- Charging time: About 2.5 hour
- Working duration: About 12 hours
- Operating temperature: -10°C ~ 45°C
- Storage temperature: -20°C ~ 60°C
- Product size: 60×54×23mm
- Product weight: 35g

Warranty

Warranty service is limited to normal use. Any man-made damages such as from connecting to an unsuitable power source, using an unsuitable device, or not following the instructions, as well as damages that did not occur during shipping, repairs and adjustments not approved by the company, damages from misuse, inattention, or improper installation may cause the warranty to be ineffective immediately. This warranty does not include shipping fees.

FCC Notice

This device complies with Part 15 of the FCC Rules. Operation is subject to the following two conditions:
(1) This device may not cause harmful interference, and(2) this device must accept any interference received, including interference that may cause undesired operation.
NOTE 1: This equipment has been tested and found to comply with the limits for a Class B digital device, pursuant to part 15 of the FCC Rules.
These limits are designed to provide reasonable protection against harmful interference in a residential installation. This equipment generates, uses and can radiate radio frequency energy and, if not installed and used in accordance with the instructions, may cause harmful interference to radio communications. However, there is no guarantee that interference will not occur in a particular installation.
If this equipment does cause harmful interference to radio or television reception, which can be determined by turning the equipment off and on, the user is encouraged to try to correct the interference by one or more of the following measures:
- Reorient or relocate the receiving antenna.
- Increase the separation between the equipment and receiver.
- Connect the equipment into an outlet on a circuit different from that to which the receiver is connected.

- Consult the dealer or an experienced radio/TV technician for help.
NOTE 2: Any changes or modifications to this unit not expressly approved by the party responsible for compliance could void the user's authority to operate the equipment.

The device has been evaluated to meet general RF exposure requirement. The device can be used in portable exposure condition without restriction.



<https://1mii.com/download-2/>

Scan the code to get more language instructions.

扫描二维码以获取更多语言使用说明书。

Scannen Sie den Code, um weitere Sprachanweisungen zu erhalten.

Escanee el código para obtener más instrucciones de idioma.

Scannez le code pour obtenir plus d'instructions linguistiques.

コードをスキャンして、より多くの言語の説明を取得します。



Any questions? Contact:

support@1mii.com

(Response Time:4-24h,excl. holidays)

MANUFACTURER

ShenZhen 1Mii Technologies Limited.

FCC ID: 2AUFR-RT211



www.1mii.com

MADE IN CHINA