



Wib proton 无线蓝牙耳机说明书

型号: Wib Pods

本产品保修标准请参考国家三包规定

产品概述	
1.简介: Wib Pods无线蓝牙耳机是一款支持双耳通话且耳机可以自由切换单个耳机使用的无线蓝牙耳机,蓝牙耳机可以通过长按触控键并打开手机蓝牙功能,搜寻无线蓝牙耳机名称有电(充电盒),即可充电耳机或充电盒,可实现无线充电充电。	
2.规格参数:	
型号	Bluetooth V5.2
蓝牙版本	4.2mm(兼容标准)
频率范围	20Hz-20KHz
灵敏度	30TdB SPL > 3dB
蓝牙协议	IEEE 802.15.1, HSP, HFP
续航时间	约20h(持续通话)
充电时间	约30h
充电盒重量	36g
耳机重量(每只)	1.5h
充电盒控制	触控控制
产品尺寸(充电盒)	44*21*23mm
产品重量	约52g
包装清单	Wib Pods无线蓝牙耳机, 充电盒, 充电线, 说明书



开始使用

1.安卓手机连接配对:

A 打开充电盒,取出耳机



B.自动开机,自动配对



C.连接手机蓝牙
耳机与手机配对:打开手机设置—打开蓝牙—搜索蓝牙耳机名称"Wib Pods"(如图)



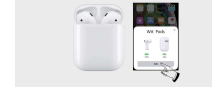
温馨提示:耳机充电3分钟没有连接蓝牙耳机将自动关机

2.苹果手机连接配对:

A 打开充电盒上盖自动连接手机—点击手机(通过Cloud连接)按钮连接



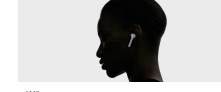
点击手机(通过Cloud连接)按钮连接



点击手机完成按钮手机耳机连接完成

3.单耳使用

左右耳耳机使用不受限制可以任意单耳使用,同时也可以双耳使用。



4.关机
耳机插入充电盒耳机自动关机



警告

在使用产品的过程中,请谨慎使用安全注意事项并正确使用本产品,避免人身伤害,死亡和财产损失。请遵循以下使用安全注意事项,避免造成火灾,过热,化学物品泄漏和爆炸事故。

- ① 为了减少火灾或锂电池爆炸的危险,请不要让本产品淋雨或者受潮。
- ② 为了减少火灾发生的风险,请勿使用,丢弃,破碎等劣质物品替换本产品。
- ③ 为了防止产品损坏,严禁私自拆卸设备,保修咨询请洽售后维修服务。
- ④ 请勿在产品过热情况下使用。
- ⑤ 请勿使用非本指定品牌指定的其他任何电池电源和附件。
- ⑥ 请勿使用非指定品牌充电器或充电盒。
- ⑦ 请勿使用未经过认证认证的第三方充电器或充电器充电。

正面

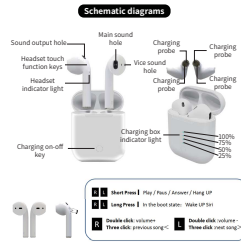


Specifications for Wireless Bluetooth Headset

Model: Wib Pods

Please carefully read the Manual before using this Product for the very first time and well keep it for further reference

Product overview	
1. Introduction: Wib Pods wireless Bluetooth headset is a wireless Bluetooth headset that supports bilateral calls and the headset can be freely switched between a single headset. The headset can be used to activate the Siri function of the iPhone by long pressing the touch function button. The wireless Bluetooth headset is equipped with a charging box (ie storage box) that supports the Qi wireless charging standard and can be charged via wireless charging.	
2. Specifications:	
Bluetooth	Bluetooth V5.2
Communication range	<12m (standard environment)
Frequency response	20Hz-20KHz
Sensitivity	30TdB SPL > 3dB
Protocol supported	IEEE 802.15.1, HSP, HFP
Battery life	About 20h (talk time) or 30h (standby)
Standby time	About 30h
Charging box (Qi) charging	Yes
Charging box wireless charging	1.5h
Headset button control	Touch control
Product size (charging box)	44*21*23mm
Product weight	About 52g
Packing list	Wib Pods wireless headset, charging box, charging cable, user manual



Function overview

1. Android phone connection pairing:

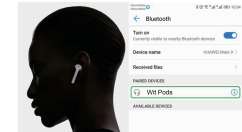
(i) Open charging dock can take out the earbuds.



(ii) Automatic pairing



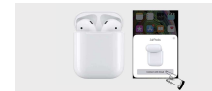
(iii) Pairing with cellphone
Headset and mobile phone pairing: At this time, you need to turn on the mobile phone setting — turn on bluetooth — search the bluetooth name of "Wib Pods" (as shown in the figure).



Warm tips: If the headset is not connected to Bluetooth for 3 minutes, it will automatically shut down.

2. Apple phone connection pairing:

A Open the top of the charging box and connect the phone automatically — click the phone (connect via Cloud) button to connect



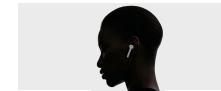
Click on the phone (connect via Cloud) button to connect



Click the phone to complete the button and the phone headset is connected.

3. Single ear use

Left and right earphones a single earphone is not restricted and can be used by any single earphone, and can also be used by TWS.



4. Power off
Simply put the headset into the charging box to shut down



Warning

Please follow the safety cautions and use the product in a correct way to avoid casualties and damages.

- ① To reduce the risks of fire, please do not cover the product with inflammables like carpet and quilt.
- ② To prevent the product from further damages, it is prohibited to dismantle the broken device without permit. In this case, please consult the After-sales Department for the repair.
- ③ Please do not use it when the device is overheating.
- ④ Please do not apply any batteries, powers or accessories other than specified in the instruction.
- ⑤ Please do not use self-made or modified batteries.
- ⑥ Do not use the wireless charging transmitter that has not passed the Qi certification standard to charge the charging box.

反面

FCC Warning Statement

Changes or modifications not expressly approved by the party responsible for compliance could void the user's authority to operate the equipment. This equipment has been tested and found to comply with the limits for a Class B digital device, pursuant to Part 15 of the FCC Rules. These limits are designed to provide reasonable protection against harmful interference in a residential installation. This equipment generates uses and can radiate radio frequency energy and, if not installed and used in accordance with the instructions, may cause harmful interference to radio communications. However, there is no guarantee that interference will not occur in a particular installation. If this equipment does cause harmful interference to radio or television reception, which can be determined by turning the equipment off and on, the user is encouraged to try to correct the interference by one or more of the following measures:

- - Reorient or relocate the receiving antenna.
- - Increase the separation between the equipment and receiver.
- - Connect the equipment into an outlet on a circuit different from that to which the receiver is connected.
- - Consult the dealer or an experienced radio/TV technician for help.

This device complies with part 15 of the FCC Rules. Operation is subject to the following two conditions: (1) This device may not cause harmful interference, and (2) this device must accept any interference received, including interference that may cause undesired operation.