

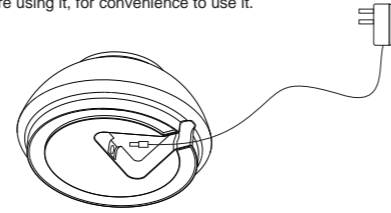
80g书写纸 400x145mm 风琴折



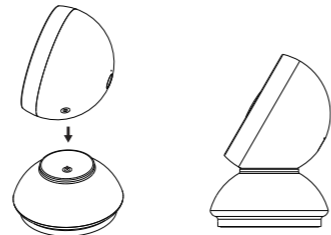
WIFI WIFI Music Sync Ambient Lamp User Manual

Charging Diagram

Attention:
Charging before using it, for convenience to use it.



1.Plug the adapter charging wire into the port of the base.



2. The female magnetic suction is aligned with male base,charging starts with the indicator light on, and the light is off when fully charged.

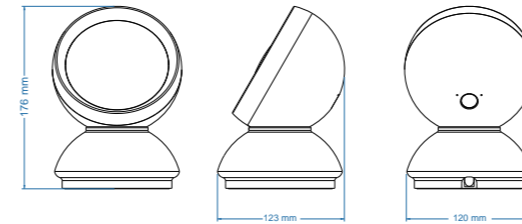
Product features

- Wi-Fi and Bluetooth connection APP control, the APP work with both Android and IOS system
- Various color adjustment
- Intelligent speaker control
- 1-100%: Stepless dimming 1-100%
- Timer switch function
- Elegant design
- Music function: External microphone with voice receiver
- Magnetic Charging

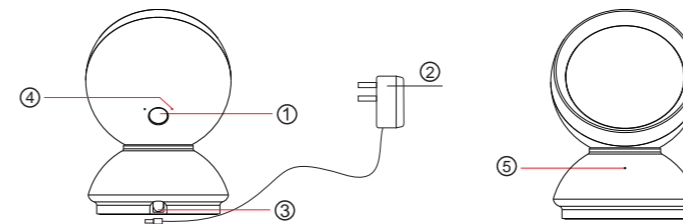
Parameter

Model No	Color	Voltage	Power	Usage Time	Charging Time	Standby Time
FWWDA4-25	RGBWW	12Vdc	6W	1.5-3H	5-8H	12H(WIFI)

Product Dimension



Wiring diagram



- ① Switch button: Single click to turn ON/OFF the light (Only turn off the light, but WiFi still working, and the APP still can control the light)
Double click to powered off both the light and the WiFi
Long press for over 5 seconds to reset
- ② USB charging wire
- ③ Adapter port
- ④ Indicator light: WiFi indicator light
- ⑤ Indicator: red lighting means charging, light turn off when charging finished

Attention

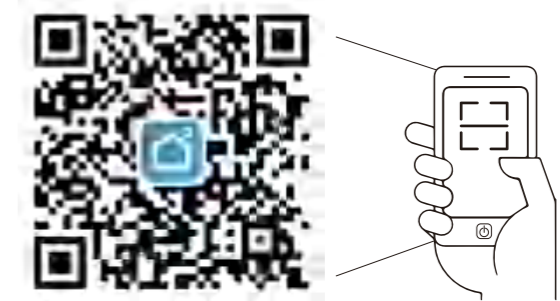
- Do not put any metal around the controller, the metal will block the WiFi signals
- Make sure the input voltage and the wiring are correct
- The output voltage must be same as the working voltage of the ambient lamp, such as DC5V

Download APP

1: Search the APP- "SMART LIFE"from Apple store or Google Play.



2: Scan the QR code from the label or user manual.

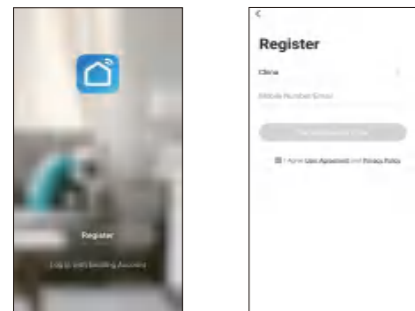


The APP compatible with Android 5.0 and IOS10.0 or higher version.



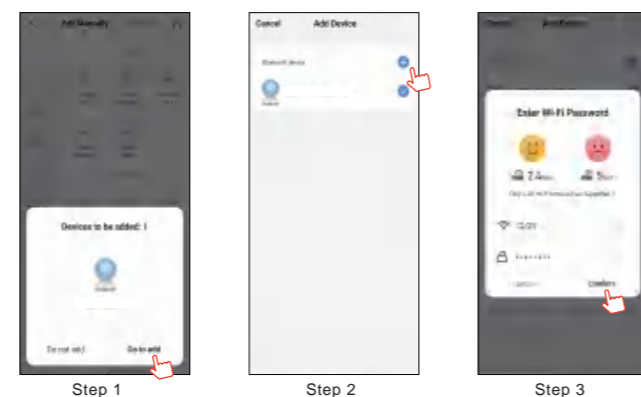
Log in / Register an account

Open the APP - "Smart Life", sign up for a new account or log in with an existing account.



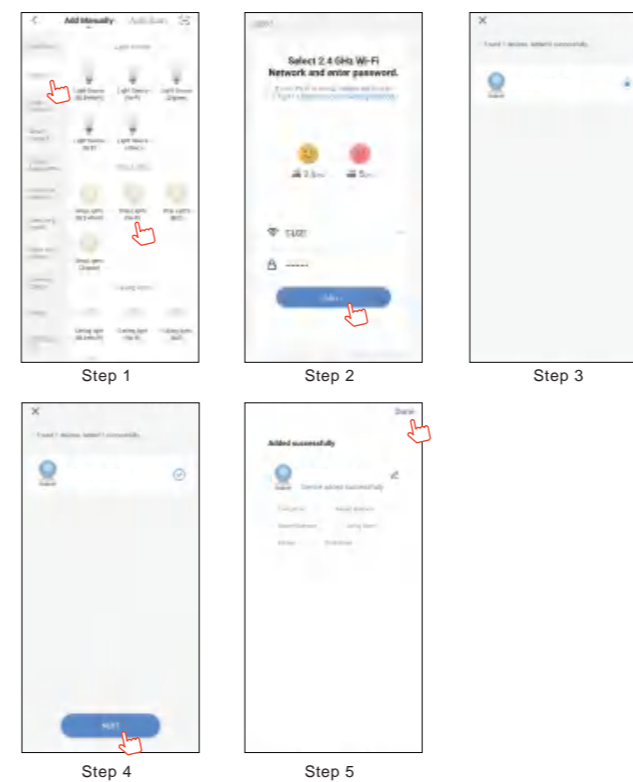
APP connection

- Preparation jobs: Power on the LED lamp and enter the home of APP, please make sure your mobile and the smart kits are connected to the same WIFI
- Connect the LED lamp:
Solution 1): The LED lamp will flash after powered on, tap the button of "Add all devices" on the APP. The APP will popup an interface with a tips about the info of the LED lamp, tap the "Add" button, it will shows the interface of "Bluetooth devices", then tap the "+" to next interface and log in with the WiFi password, the devices turn to connecting automatically, just wait until pairing success and tap "Done" to enter into the mode control interface.(If solution 1 not suitable for your devices, please try solution 2)



3. When the LED lamp not blink after powered on. Please press the function button for over 5 seconds, then the light turn to quick flash, enter into the APP and choose to add all the device in the corresponding room in the APP. Enter into the interface of adding lighting device and match the LED lamp.

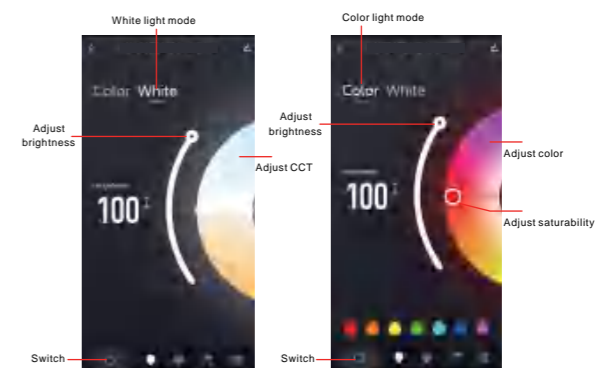
Solution 2) : The LED lamp will flash after powered on, tap the button of "Add all devices" on the APP. Enter into the interface of "Add manually" and choose "Lighting" then the corresponding "LED lamp", we will turn to the interface of devices pairing, log in the correct WiFi name and password and tap "Next" (make sure all devices should be connected to same WiFi). Make sure the LED strip is under quick flash status, then tap "Next" to start pairing. Just wait until pairing success and tap "Done" to enter into the mode control interface.



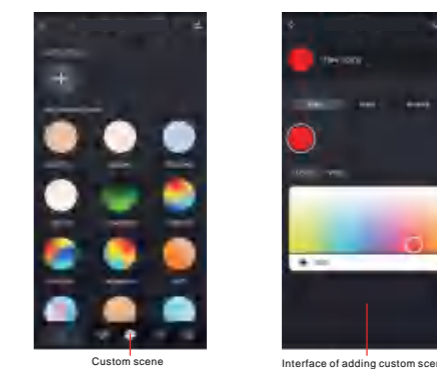
The UI is for reference only, please subject to the latest UI of the APP downloaded on your mobilephone.

Interface introduction

- You can adjust the brightness and CCT under white light mode.
- Under color light mode, you could change to any RGB mixed color and adjust the brightness and saturability.



3.Under scene mode,various scenes available for options, you can also DIY your preferable scenes.Under the music sync mode, the lights could synchronize change with the rhythm of music or voice that the smart devices received or detected.



FCC Warning

This device complies with part 15 of the FCC rules. Operation is subject to the following two conditions: (1) this device may not cause harmful interference, and (2) this device must accept any interference received, including interference that may cause undesired operation.

Changes or modifications not expressly approved by the party responsible for compliance could void the user's authority to operate the equipment.

NOTE: This equipment has been tested and found to comply with the limits for a Class B digital device, pursuant to part 15 of the FCC Rules. These limits are designed to provide reasonable protection against harmful interference in a residential installation. This equipment generates uses and can radiate radio frequency energy and, if not installed and used in accordance with the instructions, may cause harmful interference to radio communications. However, there is no guarantee that interference will not occur in a particular installation. If this equipment does cause harmful interference to radio or television reception, which can be determined by turning the equipment off and on, the user is encouraged to try to correct the interference by one or more of the following measures:

- Reorient or relocate the receiving antenna.
- Increase the separation between the equipment and receiver.
- Connect the equipment into an outlet on a circuit different from that to which the receiver is connected.
- Consult the dealer or an experienced radio/TV technician for help.

Radiation Exposure Statement

This equipment complies with FCC radiation exposure limits set forth for an uncontrolled environment. This equipment should be installed and operated with minimum distance 20cm between the radiator and your body.