

Product features



IR control

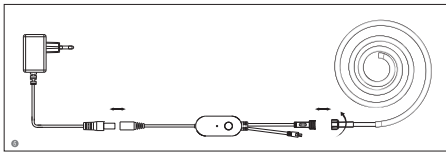


Complete range of Dreamcolor strip available

Parameters

Color	Input voltage	Power
Dreamcolor	DC 24V	Max. 42W

Wiring diagram



Other optional plugs



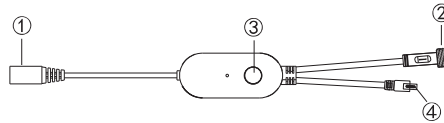
Installation Steps:

1. Clean the location that needs to be installed and fixed.
2. Tear off the release paper of the 3M adhesive on the clip and stick it in a suitable position.
3. Snap the neon tube into the fixing card.
4. According to the modeling needs, tear off the release paper of the controller and stick the controller in a suitable position.
5. Confirm the correct working parameters, connect the power supply, controller and neon strip.

Attentions

1. Ensure the power supply and controller are connected correctly.
2. The power supply output voltage should be same as LED strip working voltage.
3. Do not cover anything on the surface of power supply, controller and LED strip.
4. Ensure the connection is correct before powering.
5. Please choose a dry, clean and smooth surface for installation, the following conditions should not be used: Do not use double-sided tape for fixing in humid or low temperature environments (such as bathrooms, toilets, etc.) Do not install this product on the ceiling to prevent it from falling (the double-sided tape is not sticky enough to stick this product firmly on the ceiling) Do not use double-sided tape on brick walls, rough walls, frosted glass, wall coverings with wallpaper, dusty walls, rough plastic surfaces and other uneven walls. Users can decide whether to increase the reinforcement method of screws according to their own usage scenarios, and reinforce several screws in the whole set.

Product functions diagram



- 1:DC24V input connection port,
- 2:Output connection port to connect to LED strip.
- 3:Function button:Turn ON
Turn OFF(two short click)
Modes Change
Long press the button for over 5 seconds to reset or network pairing.
- 4:IR receiver

Download APP

- 1: Search the APP- "SMART LIFE" from Apple store or Google Play.



- 2: Scan the QR code from the label or user manual.



The APP compatible with Android 5.0 and IOS10.0 or higher version.



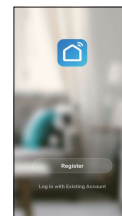
Android 5.0



iOS 10.0

Log in / Register an account

Open the APP - "Smart Life", sign up for a new account or log in with an existing account.

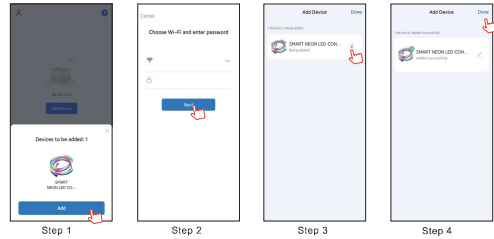


APP connection

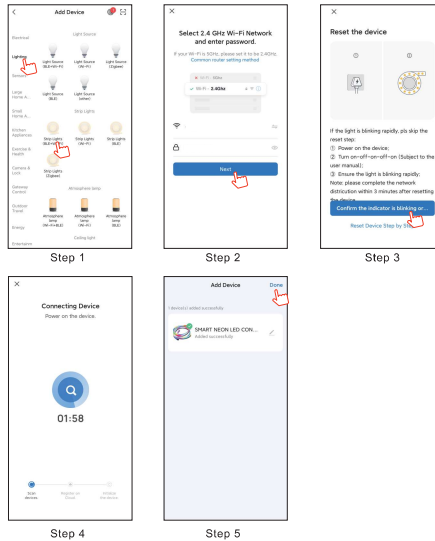
1.Preparation jobs: Power on the LED strip and enter the home of APP, please make sure your mobile and the smart kits are connected to the same WIFI (Not Support 5G WIFI)

2.Connect the controller

Solution 1): After powering on the strip, turn on and off 3 times(or long press the switch button for over 5 seconds), the strip will go into a status of quick flashing. Find the "+" (in the corresponding room of the APP) to add devices. If your mobile have already turned on bluetooth before connecting the LED strip, then no need to turn on bluetooth again, the APP will connect to the LED strip automatically. If your mobile didn't turn on bluetooth before connecting the LED strip, the APP will pop up an interface with tips to ask you to turn on bluetooth. Then please choose "Allow", then the bluetooth function of your mobile will be turned on. After that, the APP will pop up tips with info of the LED strips, then choose "Go to add". Will go into an interface of bluetooth device, choose the "+" and go into next interface(Enter Wi-Fi password). Input the password of the WIFI and choose "Confirm", then it will go into status of "Connecting.....", you will need to await for your mobile to pairing with the controller at this step. Choose "Done" when it shows "Added successfully", then go into operation modes, (If solution 1 is not suitable with your devices, please refer to solution 2)



Solution 2): The LED strip will flash after powered on, tap the button of "Add all devices" on the APP. Enter into the interface of "Add manually" and choose "Lighting" then the corresponding "LED strip", we will turn to the interface of devices pairing, log in the correct WIFI name and password and tap "Next" (make sure all devices should be connected to same WIFI). Make sure the LED strip is under quick flash status, then tap "Next" to start pairing. Just wait until pairing success and tap "Done" to enter into the mode control interface



3. When the LED strip not blink after powered on, Please press the function button for over 5 seconds, then the light turn to quick flash, enter into the APP and choose to add all the device in the corresponding room in the APP. Enter into the interface of adding lighting device and match the LED strip

The UI is for reference only, please subject to the latest UI of the APP downloaded on your mobilephone.

Remote controller operation

Power supply: 3V button cell
Control distance: 5-8 meters in open area

Remove the PVC film on the back of the remote controller before use, and press the power button before operation.



Features	Action	Remote control buttons
On/Off	Short Press	[Power]
Pause/Start	Short Press	[Play/Pause]
Speed/Dimmer	Short Press	[Volume Up/Down]
Dynamic mode switching	Short Press	[Mode]
Music mode	Short Press	[Music]
Automatic mode	Short Press	[Auto]
Brightness +/-	Short Press	[Brightness +/-]
State of pairing	Short Press	[Pairing]
A R I B S	Short Press	[A R I B S]

FCC Statement

This device complies with Part 15 of the FCC Rules. Operation is subject to the following two conditions:

- (1) This device may not cause harmful interference.
- (2) This device must accept any interference received, including interference that may cause undesired operation.

2. Changes or modifications not expressly approved by the party responsible for compliance could void the user's authority to operate the equipment.

Note: This equipment has been tested and found to comply with the limits for a class B digital device, pursuant to Part 15 of the FCC Rules. These limits are designed to provide reasonable protection against harmful interference in a residential installation.

This equipment has been tested and found to comply with the limits for a Class B digital device, pursuant to part 15 of the FCC Rules. These limits are designed to provide reasonable protection against harmful interference in a residential installation. This equipment generates, uses and can radiate radio frequency energy and, if not installed and used in accordance with the instructions, may cause harmful interference to radio communications. However, there is no guarantee that interference will not occur in a particular installation. If this equipment does cause harmful interference to radio or television reception, which can be determined by turning the equipment off and on, the user is encouraged to try to correct the interference by one or more of the following measures:

- Reorient or relocate the receiving antenna.
- Increase the separation between the equipment and receiver.
- Connect the equipment into an outlet on a circuit different from that to which the receiver is connected.
- Consult the dealer or an experienced radio/TV technician for help.

This equipment should be installed and operated with a minimum distance of 20 cm between the radiator and your body