

# Smart DIY Hexagon panel light

## User Manual

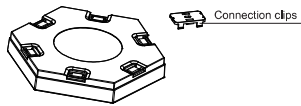
### Features

- ✕ The product adopts a DIY intelligent splicing scheme, which can splice the shape according to customer needs.
- 🌈 16 million colors and various dream color light functions.
- 📶 The product adopts WiFi+Bluetooth dual mode connection. App and IR remote controllable.
- The product has six splicing interfaces, which are not direction-specific and can be DIY connected.
- ⚡ Any single panel can be an overall shape. Classic appearance, compact structure, can be spliced into different shapes and easy to install.

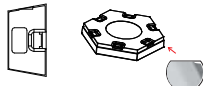
### Parameters

Model No	Color	Voltage	Power	Control	Parts List
FWWSB8-37-6	RGBIC	DC24V	12W	APP + IR Remote	Adapter x 1 Manual x 1 Adhesive tapes x 7 screw x 8 Connector x 8 Remote Controller x 1
FWWSB8-37-9	RGBIC	DC24V	18W	APP + IR Remote	Adapter x 1 Manual x 1 Adhesive tapes x 10 screw x 11 Connector x 11 Remote Controller x 1
FWWSB8-37-12	RGBIC	DC24V	24W	APP + IR Remote	Adapter x 1 Manual x 1 Adhesive tapes x 13 screw x 14 Connector x 14 Remote Controller x 1
FWWSB8-17-9	RGBIC	DC5V	4.5W	APP + IR Remote	Adapter x 1 Manual x 1 Adhesive tapes x 10 screw x 11 Connector x 11 Remote Controller x 1

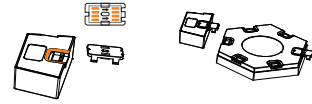
### Product Function Diagram



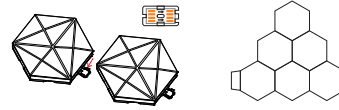
1: Stick the adhesive tape on back of the controller and the light



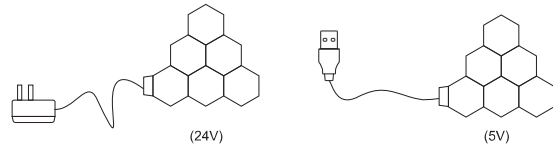
2: Take one connector and connect to the controller and the light, one end connect to the controller, another end connect to any port of the light panel. Make sure the mark of the arrow always point to and connect to the next panel.



3: Connect the rest of the light panels according to your designs.



4: The controller connect to 24V DC power supply and 5V USB port, and check if very light panels works well.



5: Clean the surface of the installation position (such as the wall)

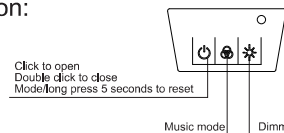
6: Remove the release paper from adhesive tape that have been stick to the controller and the light body, Paste it on the wall to be installed, and press each piece of light panels tightly.

### Noted

- Please don't install the lights on wall paper, lime wall, irregular wall, and we don't recommend to install the lights on the ceiling of the room.
- If you worry about the adhesive tape is not strong enough, you can use the crew to fix the connectors on wall.
- If you want to remove the light panels, please simply lift the light panels forcefully to disengage the connector.

### Product operation:

#### Buttons operation



### Remote controller operation

Power supply: 3V button cell  
Control distance: 5-8 meters in open area

Remove the PVC film on the back of the remote controller before use, and press the power button before operation.



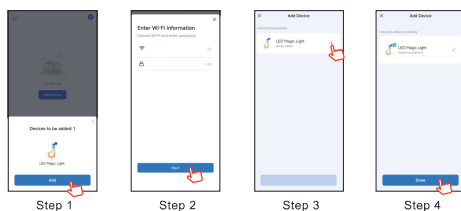
Features	Action	Remote control buttons
ON/OFF	Short Press	[Power]
Pause/Start	Short Press	[Pause]
Speed/sensitivity	Short Press	[Speed]
Dynamic mode switching	Short Press	[Mode]
Music mode	Short Press	[Music]
Automatic mode	Short Press	[Auto]
Brightness +/-	Short Press	[Brightness +/-]
Static color switching	Short Press	[Color]
W R G B	Short Press	[W] [R] [G] [B]

### Download the APP

1) Search or scan the QR code to download the APP of "Smart Life" from Android 4.0 and above or IOS 8.1 and above.

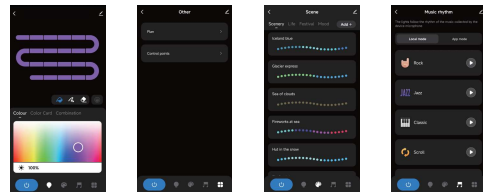


- Register or log in: Register an account according to the tips of the APP, and log in to the UI of the APP.
- APP connecting: turn on the Bluetooth of your mobile phone, then power on the light, when the light under quick flashing, open the APP and search for and add the devices. Choose the 2.4G networks and log in with correct WiFi name and password to pairing till devices added success.



### Operation of the APP

You can set and adjust the brightness, colors, scenes, music mode and timer on the UI of the APP.



### FCC Statement

This device complies with Part 15 of the FCC Rules. Operation is subject to the following two conditions:

- This device may not cause harmful interference.
- This device must accept any interference received, including interference that may cause undesired operation.

Note: This equipment has been tested and found to comply with the limits for a class B digital device, pursuant to Part 15 of the FCC Rules. These limits are designed to provide reasonable protection against harmful interference in a residential installation.

This equipment has been tested and found to comply with the limits for a Class B digital device, pursuant to part 15 of the FCC Rules. These limits are designed to provide reasonable protection against harmful interference in a residential installation. This equipment generates, uses and can radiate radio frequency energy and, if not installed and used in accordance with the instructions, may cause harmful interference to radio communications. However, there is no guarantee that interference will not occur in a particular installation. If this equipment does cause harmful interference to radio or television reception, which can be determined by turning the equipment off and on, the user is encouraged to try to correct the interference by one or more of the following measures:

- Reorient or relocate the receiving antenna.
- Increase the separation between the equipment and receiver.
- Connect the equipment into an outlet on a circuit different from that to which the receiver is connected.
- Consult the dealer or an experienced radio/TV technician for help.

This equipment should be installed and operated with a minimum distance of 20 cm between the radiator and your body