



Shenzhen Huaxia Testing Technology Co., Ltd.

1F., Block A of Tongsheng Technology Building, Huahui Road, Dalang Street, Longhua District, Shenzhen, China

Telephone: +86-755-26648640
Fax: +86-755-26648637
Website: www.cqa-cert.com

Report Template Version: V05
Report Template Revision Date: 2021-11-03

Test Report

Report No.: CQASZ20230600957E-01
Applicant: Shenzhen Itian Technology Co.,Ltd.
Address of Applicant: 6F, Building D, Phase 2nd, Anfeng Industrial Park, Dalang Street, Longhua District, Shenzhen, China
Equipment Under Test (EUT):
Product: 2 in 1 Dual Watch Charger
Model No.: V19A,V19S
Test Model No.: V19A
Brand Name: ITIAN
FCC ID: 2AUDIO-V19AV19S
Standards: 47 CFR Part 15, Subpart C
Date of Receipt: 2023-6-1
Date of Test: 2023-6-1 to 2023-6-19
Date of Issue: 2023-6-30
Test Result: **PASS***

*In the configuration tested, the EUT complied with the standards specified above

Tested By: _____

(Joe Wang)

Reviewed By: _____

(Timo Lei)

Approved By: _____

(Jack Ai)



1 Version

Revision History Of Report

Report No.	Version	Description	Issue Date
CQASZ20230600957E-01	Rev.01	Initial report	2023-6-30

2 Test Summary

Test Item	Test Requirement	Test method	Result
Antenna Requirement	47 CFR Part 15, Subpart C Section 15.203	ANSI C63.10 2013	PASS
AC Power Line Conducted Emission	47 CFR Part 15, Subpart C Section 15.207	ANSI C63.10 2013	PASS
20dB Occupied Bandwidth	47 CFR Part 15, Subpart C Section 15.215	ANSI C63.10 2013	PASS
Radiated Emission , Radiated Spurious Emissions	47 CFR Part 15, Subpart C Section 15.209	ANSI C63.10 2013	PASS

3 Contents

	Page
1 VERSION	2
2 TEST SUMMARY	3
3 CONTENTS	4
4 GENERAL INFORMATION	5
4.1 CLIENT INFORMATION	5
4.2 GENERAL DESCRIPTION OF EUT	5
4.3 PRODUCT SPECIFICATION SUBJECTIVE TO THIS STANDARD	5
4.4 TEST ENVIRONMENT	6
4.5 DESCRIPTION OF SUPPORT UNITS	6
4.6 STATEMENT OF THE MEASUREMENT UNCERTAINTY	7
4.7 TEST LOCATION	7
4.8 TEST FACILITY	7
4.9 DEVIATION FROM STANDARDS	7
4.10 OTHER INFORMATION REQUESTED BY THE CUSTOMER	7
4.11 EQUIPMENT LIST	8
5 TEST RESULTS AND MEASUREMENT DATA	9
5.1 ANTENNA REQUIREMENT	9
5.2 CONDUCTED EMISSIONS	10
5.3 20dB OCCUPY BANDWIDTH	15
5.4 RADIATED SPURIOUS EMISSION & RESTRICTED BANDS	17
5.4.1 <i>Spurious Emissions</i>	17
6 PHOTOGRAPHS - EUT TEST SETUP	24
6.1 RADIATED EMISSION	24
6.2 CONDUCTED EMISSION	25
7 PHOTOGRAPHS - EUT CONSTRUCTIONAL DETAILS	26

4 General Information

4.1 Client Information

Applicant:	Shenzhen Itian Technology Co.,Ltd.
Address of Applicant:	6F, Building D, Phase 2nd, Anfeng Industrial Park, Dalang Street, Longhua District, Shenzhen, China
Manufacturer:	Shenzhen Itian Technology Co.,Ltd.
Address of Manufacturer:	6F, Building D, Phase 2nd, Anfeng Industrial Park, Dalang Street, Longhua District, Shenzhen, China
Factory:	Shenzhen Itian Technology Co.,Ltd.
Address of Factory:	6F, Building D, Phase 2nd, Anfeng Industrial Park, Dalang Street, Longhua District, Shenzhen, China

4.2 General Description of EUT

Product Name:	2 in 1 Dual Watch Charger
Model No.:	V19A,V19S
Test Model No.:	V19A
Brand Name:	ITIAN
Software Version:	V19-V1
Hardware Version:	V19-V12
Power Supply:	DC 5V=2A

4.3 Product Specification subjective to this standard

Equipment Category:	Non-ISM frequency
Operation Frequency range:	110kHz~205kHz
Modulation Type:	ASK
Antenna Type:	Induction coil
Antenna Gain:	0dBi
Power:	Output: 6W(Max)

Note:

1. In section 15.31(m), regards to the operating frequency range less 1 MHz.

4.4 Test Environment

Operating Environment:	
Radiated Emissions:	
Temperature:	25.5 °C
Humidity:	53 % RH
Atmospheric Pressure:	1009 mbar
Conducted Emissions:	
Temperature:	25.5 °C
Humidity:	55 % RH
Atmospheric Pressure:	1009 mbar
Radio conducted item test (RF Conducted test room):	
Temperature:	27.1 °C
Humidity:	56 % RH
Atmospheric Pressure:	1009 mbar
Test Mode:	
Mode a:	Keep the EUT Wireless1 Out Put 3W
Mode b:	Keep the EUT Wireless2 Out Put 3W
Mode c:	Keep the EUT Total Wireless Out Put 6W(Max)

4.5 Description of Support Units

The EUT has been tested with associated equipment below.

1) Support equipment

Description	Manufacturer	Model No.	Certification	Supplied by
Adapter	/	LPL-C010050200Z	/	CQA
Apple Watch	Apple	/	/	CQA

2) Cable

Cable No.	Description	Manufacturer	Cable Type/Length	Supplied by
/	/	/	/	/

4.6 Statement of the measurement uncertainty

The data and results referenced in this document are true and accurate.

The reader is cautioned that there may be errors within the calibration limits of the equipment and facilities.

The measurement uncertainty was calculated for all measurements listed in this test report acc. to CISPR 16 - 4 „Specification for radio disturbance and immunity measuring apparatus and methods – Part 4: Uncertainty in EMC Measurements“ and is documented in the **Shenzhen Huaxia Testing Technology Co., Ltd.** quality system acc. to DIN EN ISO/IEC 17025.

Furthermore, component and process variability of devices similar to that tested may result in additional deviation. The manufacturer has the sole responsibility of continued compliance of the device.

Hereafter the best measurement capability for CQA laboratory is reported:

No.	Item	Uncertainty	Notes
1	Radiated Emission (Below 1GHz)	5.12dB	(1)
2	Radiated Emission (Above 1GHz)	4.60dB	(1)
3	Occupied Bandwidth	1.1%	(1)
4	Temperature test	0.8°C	(1)
5	Humidity test	2.0%	(1)

(1) This uncertainty represents an expanded uncertainty expressed at approximately the 95% confidence level using a coverage factor of k=2.

4.7 Test Location

Shenzhen Huaxia Testing Technology Co., Ltd.

1F., Block A of Tongsheng Technology Building, Huahui Road, Dalang Street, Longhua District, Shenzhen, China

4.8 Test Facility

• **A2LA (Certificate No. 4742.01)**

Shenzhen Huaxia Testing Technology Co., Ltd., Shenzhen EMC Laboratory is accredited by the American Association for Laboratory Accreditation(A2LA). Certificate No. 4742.01.

• **FCC Registration No.: 522263**

Shenzhen Huaxia Testing Technology Co., Ltd., Shenzhen EMC Laboratory has been registered and fully described in a report filed with the (FCC) Federal Communications Commission. The acceptance letter from the FCC is maintained in our files. Registration No.:522263

4.9 Deviation from Standards

None.

4.10 Other Information Requested by the Customer

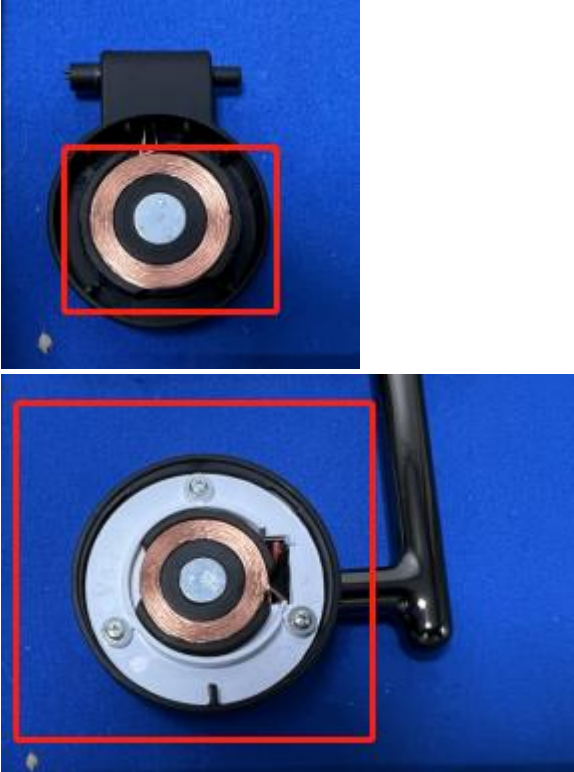
None.

4.11 Equipment List

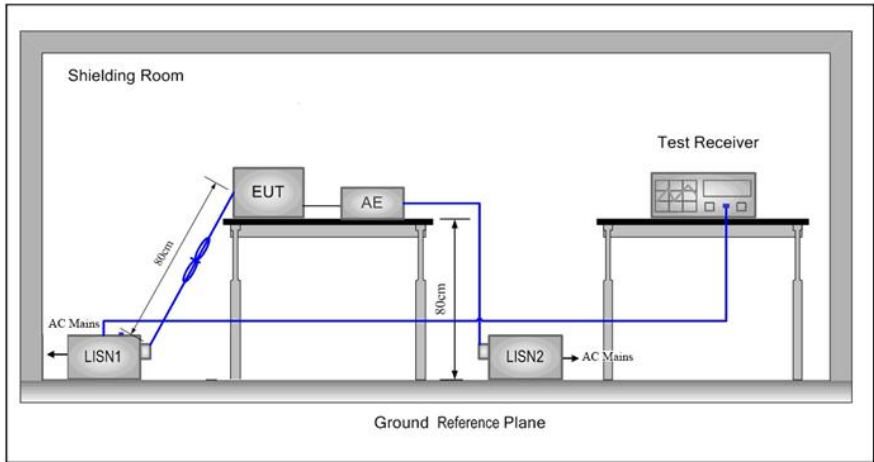
Test Equipment	Manufacturer	Model No.	Instrument No.	Calibration Date	Calibration Due Date
EMI Test Receiver	R&S	ESR7	CQA-005	2022/9/9	2023/9/8
Spectrum analyzer	R&S	FSU26	CQA-038	2022/9/9	2023/9/8
Preamplifier	MITEQ	AMF-6D-02001800-29-20P	CQA-036	2022/9/9	2023/9/8
Loop antenna	Schwarzbeck	FMZB1516	CQA-060	2021/9/16	2024/9/15
Bilog Antenna	R&S	HL562	CQA-011	2021/9/16	2024/9/15
Horn Antenna	R&S	HF906	CQA-012	2021/9/16	2024/9/15
Horn Antenna	Schwarzbeck	BBHA 9170	CQA-088	2021/9/16	2024/9/15
Coaxial Cable (Above 1GHz)	CQA	N/A	C007	2022/9/9	2023/9/8
Coaxial Cable (Below 1GHz)	CQA	N/A	C013	2022/9/9	2023/9/8
Antenna Connector	CQA	RFC-01	CQA-080	2022/9/9	2023/9/8
RF cable(9KHz~40GHz)	CQA	RF-01	CQA-079	2022/9/9	2023/9/8
Power divider	MIDWEST	PWD-2533-02-SMA-79	CQA-067	2022/9/9	2023/9/8
EMI Test Receiver	R&S	ESR7	CQA-005	2022/9/9	2023/9/8
LISN	R&S	ENV216	CQA-003	2022/9/9	2023/9/8
Coaxial cable	CQA	N/A	CQA-C009	2022/9/9	2023/9/8
DC power	KEYSIGHT	E3631A	CQA-028	2022/9/9	2023/9/8

5 Test results and Measurement Data

5.1 Antenna Requirement

Standard requirement:	47 CFR Part 15C Section 15.203
<p>15.203 requirement: An intentional radiator shall be designed to ensure that no antenna other than that furnished by the responsible party shall be used with the device. The use of a permanently attached antenna or of an antenna that uses a unique coupling to the intentional radiator, the manufacturer may design the unit so that a broken antenna can be replaced by the user, but the use of a standard antenna jack or electrical connector is prohibited.</p> <p>15.247(b) (4) requirement: The conducted output power limit specified in paragraph (b) of this section is based on the use of antennas with directional gains that do not exceed 6 dBi. Except as shown in paragraph (c) of this section, if transmitting antennas of directional gain greater than 6 dBi are used, the conducted output power from the intentional radiator shall be reduced below the stated values in paragraphs (b)(1), (b)(2), and (b)(3) of this section, as appropriate, by the amount in dB that the directional gain of the antenna exceeds 6 dBi.</p>	
EUT Antenna:	
<p>The antenna is Induction coil. The best case gain of the antenna is 0dBi.</p>	

5.2 Conducted Emissions

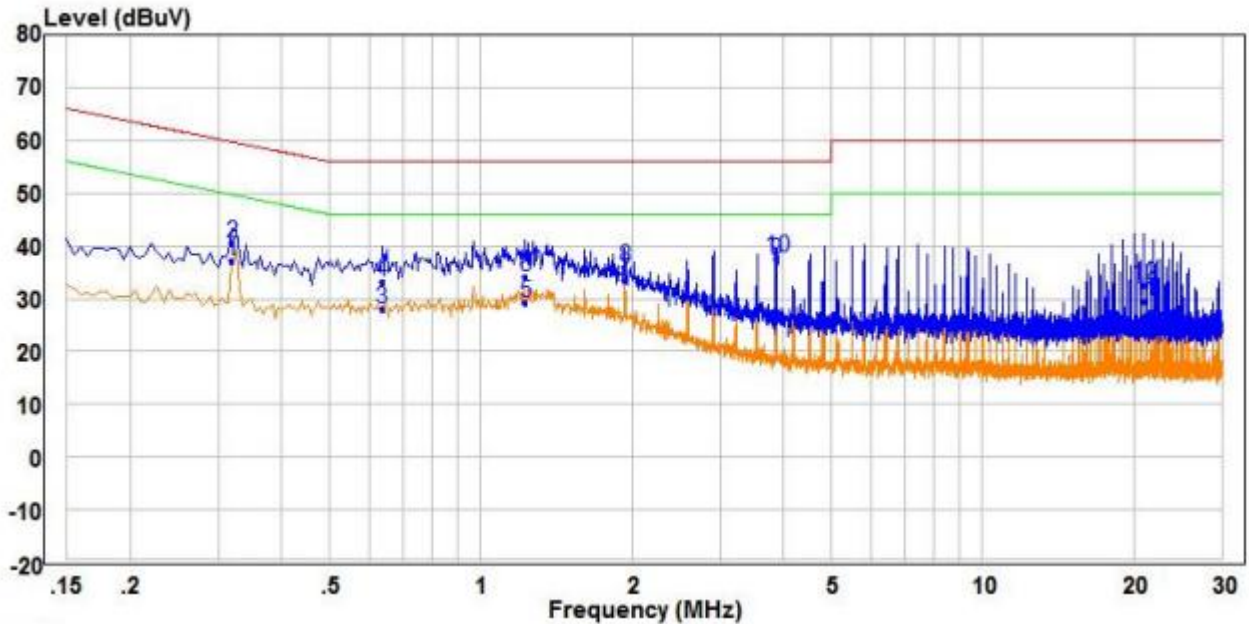
Test Requirement:	47 CFR Part 15C Section 15.207														
Test Method:	ANSI C63.10: 2013														
Test Frequency Range:	150kHz to 30MHz														
Limit:	<table border="1"> <thead> <tr> <th rowspan="2">Frequency range (MHz)</th> <th colspan="2">Limit (dBuV)</th> </tr> <tr> <th>Quasi-peak</th> <th>Average</th> </tr> </thead> <tbody> <tr> <td>0.15-0.5</td> <td>66 to 56*</td> <td>56 to 46*</td> </tr> <tr> <td>0.5-5</td> <td>56</td> <td>46</td> </tr> <tr> <td>5-30</td> <td>60</td> <td>50</td> </tr> </tbody> </table> <p>* Decreases with the logarithm of the frequency.</p>	Frequency range (MHz)	Limit (dBuV)		Quasi-peak	Average	0.15-0.5	66 to 56*	56 to 46*	0.5-5	56	46	5-30	60	50
Frequency range (MHz)	Limit (dBuV)														
	Quasi-peak	Average													
0.15-0.5	66 to 56*	56 to 46*													
0.5-5	56	46													
5-30	60	50													
Test Procedure:	<ol style="list-style-type: none"> 1) The mains terminal disturbance voltage test was conducted in a shielded room. 2) The EUT was connected to AC power source through a LISN 1 (Line Impedance Stabilization Network) which provides a $50\Omega/50\mu\text{H} + 5\Omega$ linear impedance. The power cables of all other units of the EUT were connected to a second LISN 2, which was bonded to the ground reference plane in the same way as the LISN 1 for the unit being measured. A multiple socket outlet strip was used to connect multiple power cables to a single LISN provided the rating of the LISN was not exceeded. 3) The tabletop EUT was placed upon a non-metallic table 0.8m above the ground reference plane. And for floor-standing arrangement, the EUT was placed on the horizontal ground reference plane. 4) The test was performed with a vertical ground reference plane. The rear of the EUT shall be 0.4 m from the vertical ground reference plane. The vertical ground reference plane was bonded to the horizontal ground reference plane. The LISN 1 was placed 0.8 m from the boundary of the unit under test and bonded to a ground reference plane for LISNs mounted on top of the ground reference plane. This distance was between the closest points of the LISN 1 and the EUT. All other units of the EUT and associated equipment was at least 0.8 m from the LISN 2. 5) In order to find the maximum emission, the relative positions of equipment and all of the interface cables must be changed according to ANSI C63.10: 2013 on conducted measurement. 														
Test Setup:															
Test Results:	Pass														

Measurement Data

The worst case:

Mode a:

Live line:



	Read	Limit	Over					
Freq	Level	Factor	Level	Line	Limit	Remark	Pol/Phase	
MHz	dBuV	dB	dBuV	dBuV	dB			
1	0.320	27.67	9.49	37.16	49.71	-12.55	Average	Line
2	0.320	31.04	9.49	40.53	59.71	-19.18	QP	Line
3	0.635	18.14	9.77	27.91	46.00	-18.09	Average	Line
4	0.635	23.51	9.77	33.28	56.00	-22.72	QP	Line
5	1.230	19.81	9.53	29.34	46.00	-16.66	Average	Line
6	1.230	24.64	9.53	34.17	56.00	-21.83	QP	Line
7	1.940	23.95	9.53	33.48	46.00	-12.52	Average	Line
8	1.940	26.32	9.53	35.85	56.00	-20.15	QP	Line
9 PP	3.880	27.39	9.66	37.05	46.00	-8.95	Average	Line
10 QP	3.880	27.98	9.66	37.64	56.00	-18.36	QP	Line
11	21.010	19.37	10.08	29.45	50.00	-20.55	Average	Line
12	21.010	22.54	10.08	32.62	60.00	-27.38	QP	Line

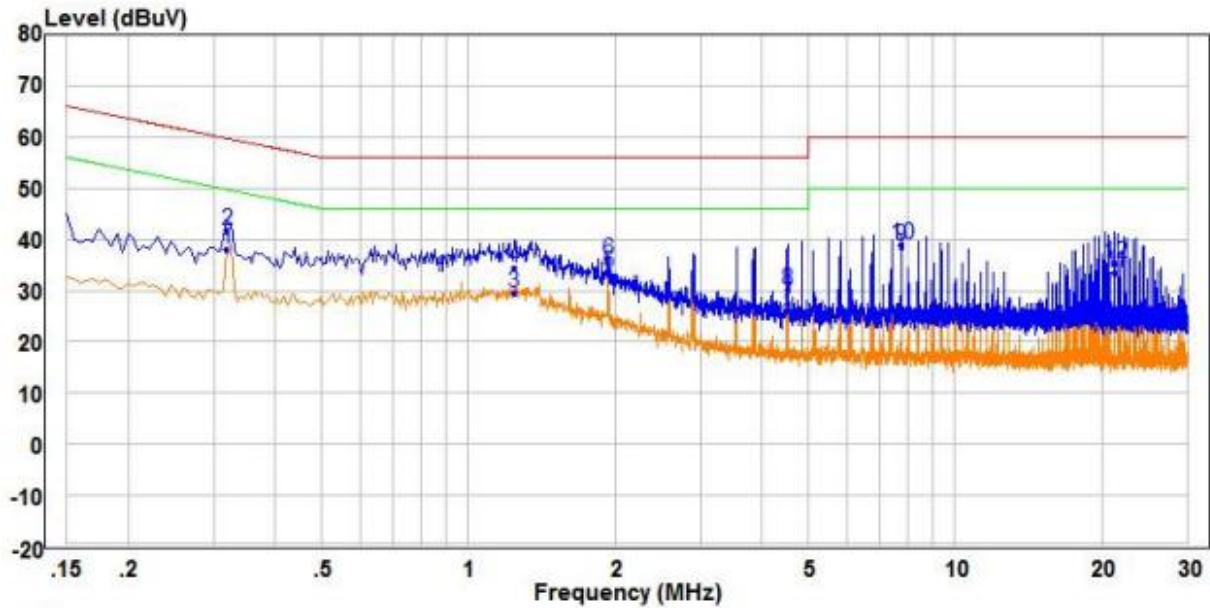
Remark:

1. The following Quasi-Peak and Average measurements were performed on the EUT:
2. Final Test Level =Receiver Reading + LISN Factor + Cable Loss.
3. If the Peak value under Average limit, the Average value is not recorded in the report.

The worst case:

Mode a:

Neutral line:



	Read			Limit	Over				
Freq	Level	Factor	Level	Line	Limit	Remark	Pol/Phase		
MHz	dBuV	dB	dBuV	dBuV	dB				
1	0.320	28.58	9.51	38.09	49.71	-11.62	Average	Neutral	
2	QP	0.320	32.18	9.51	41.69	59.71	-18.02	QP	Neutral
3		1.240	19.75	9.71	29.46	46.00	-16.54	Average	Neutral
4		1.240	24.75	9.71	34.46	56.00	-21.54	QP	Neutral
5		1.940	23.81	9.75	33.56	46.00	-12.44	Average	Neutral
6		1.940	26.22	9.75	35.97	56.00	-20.03	QP	Neutral
7		4.525	17.57	9.81	27.38	46.00	-18.62	Average	Neutral
8		4.525	20.29	9.81	30.10	56.00	-25.90	QP	Neutral
9	PP	7.755	28.73	9.83	38.56	50.00	-11.44	Average	Neutral
10		7.755	29.09	9.83	38.92	60.00	-21.08	QP	Neutral
11		21.330	23.47	9.90	33.37	50.00	-16.63	Average	Neutral
12		21.330	25.57	9.90	35.47	60.00	-24.53	QP	Neutral

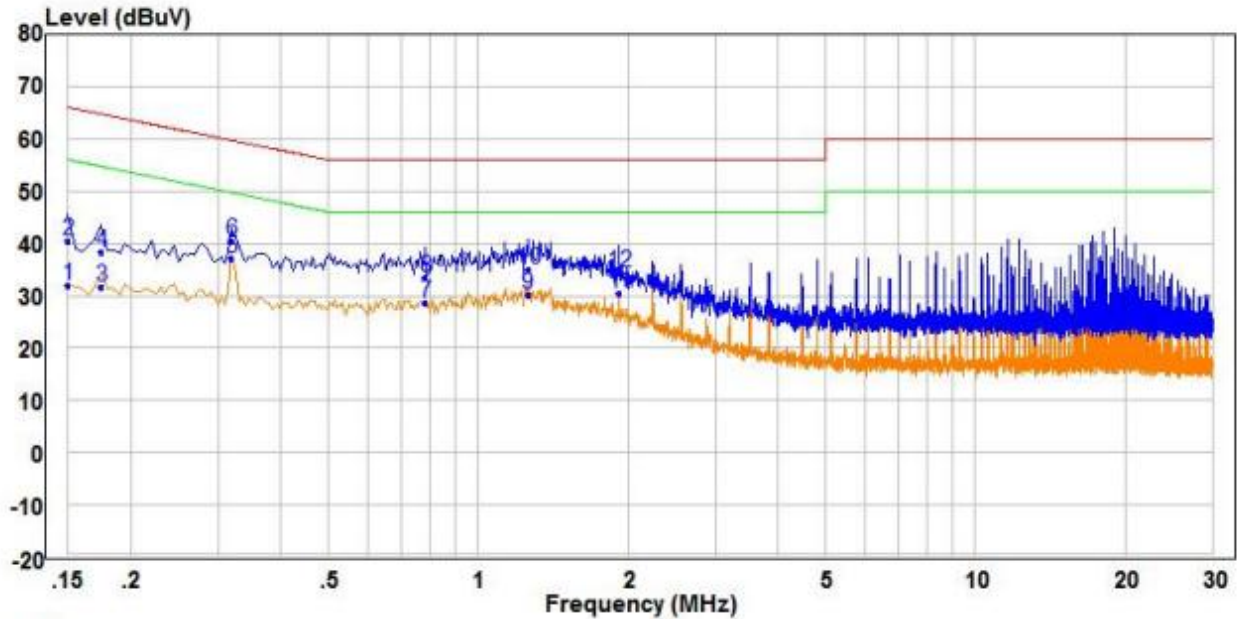
Remark:

1. The following Quasi-Peak and Average measurements were performed on the EUT:
2. Final Test Level =Receiver Reading + LISN Factor + Cable Loss.
3. If the Peak value under Average limit, the Average value is not recorded in the report.

The worst case:

Mode c:

Live line:



	Read Freq	Read Level	Factor	Level	Limit Line	Over Limit	Remark	Pol/Phase
	MHz	dBuV	dB	dBuV	dBuV	dB		
1	0.150	22.27	9.70	31.97	56.00	-24.03	Average	Line
2	0.150	30.79	9.70	40.49	66.00	-25.51	QP	Line
3	0.175	21.91	9.65	31.56	54.72	-23.16	Average	Line
4	0.175	28.59	9.65	38.24	64.72	-26.48	QP	Line
5 PP	0.320	27.69	9.52	37.21	49.71	-12.50	Average	Line
6 QP	0.320	30.86	9.52	40.38	59.71	-19.33	QP	Line
7	0.785	18.93	9.84	28.77	46.00	-17.23	Average	Line
8	0.785	23.56	9.84	33.40	56.00	-22.60	QP	Line
9	1.260	19.73	10.34	30.07	46.00	-15.93	Average	Line
10	1.260	24.55	10.34	34.89	56.00	-21.11	QP	Line
11	1.925	18.82	11.55	30.37	46.00	-15.63	Average	Line
12	1.925	22.97	11.55	34.52	56.00	-21.48	QP	Line

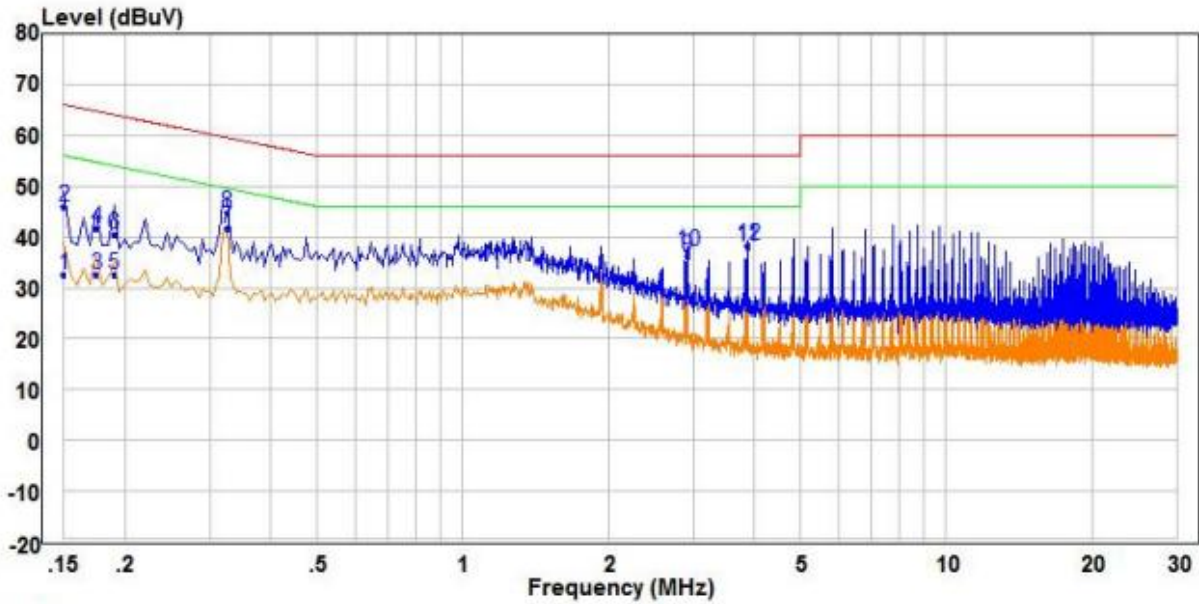
Remark:

1. The following Quasi-Peak and Average measurements were performed on the EUT:
2. Final Test Level = Receiver Reading + LISN Factor + Cable Loss.
3. If the Peak value under Average limit, the Average value is not recorded in the report.

The worst case:

Mode c:

Neutral line:

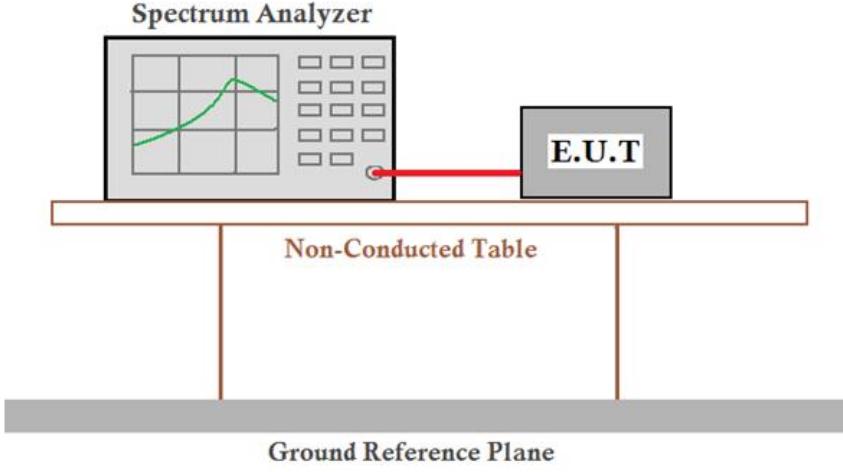


	Read Freq	Read Level	Factor	Limit Level	Over Limit	Remark	Pol/Phase
	MHz	dBuV	dB	dBuV	dB		
1	0.150	22.89	9.70	32.59	56.00	-23.41 Average	Neutral
2	0.150	36.36	9.70	46.06	66.00	-19.94 QP	Neutral
3	0.175	22.94	9.65	32.59	54.72	-22.13 Average	Neutral
4	0.175	31.98	9.65	41.63	64.72	-23.09 QP	Neutral
5	0.190	22.91	9.62	32.53	54.04	-21.51 Average	Neutral
6	0.190	30.82	9.62	40.44	64.04	-23.60 QP	Neutral
7 PP	0.325	32.25	9.51	41.76	49.58	-7.82 Average	Neutral
8 QP	0.325	35.24	9.51	44.75	59.58	-14.83 QP	Neutral
9	2.910	26.49	9.77	36.26	46.00	-9.74 Average	Neutral
10	2.910	27.37	9.77	37.14	56.00	-18.86 QP	Neutral
11	3.880	28.27	9.78	38.05	46.00	-7.95 Average	Neutral
12	3.880	28.73	9.78	38.51	56.00	-17.49 QP	Neutral

Remark:

1. The following Quasi-Peak and Average measurements were performed on the EUT:
2. Final Test Level =Receiver Reading + LISN Factor + Cable Loss.
3. If the Peak value under Average limit, the Average value is not recorded in the report.

5.3 20dB Occupy Bandwidth

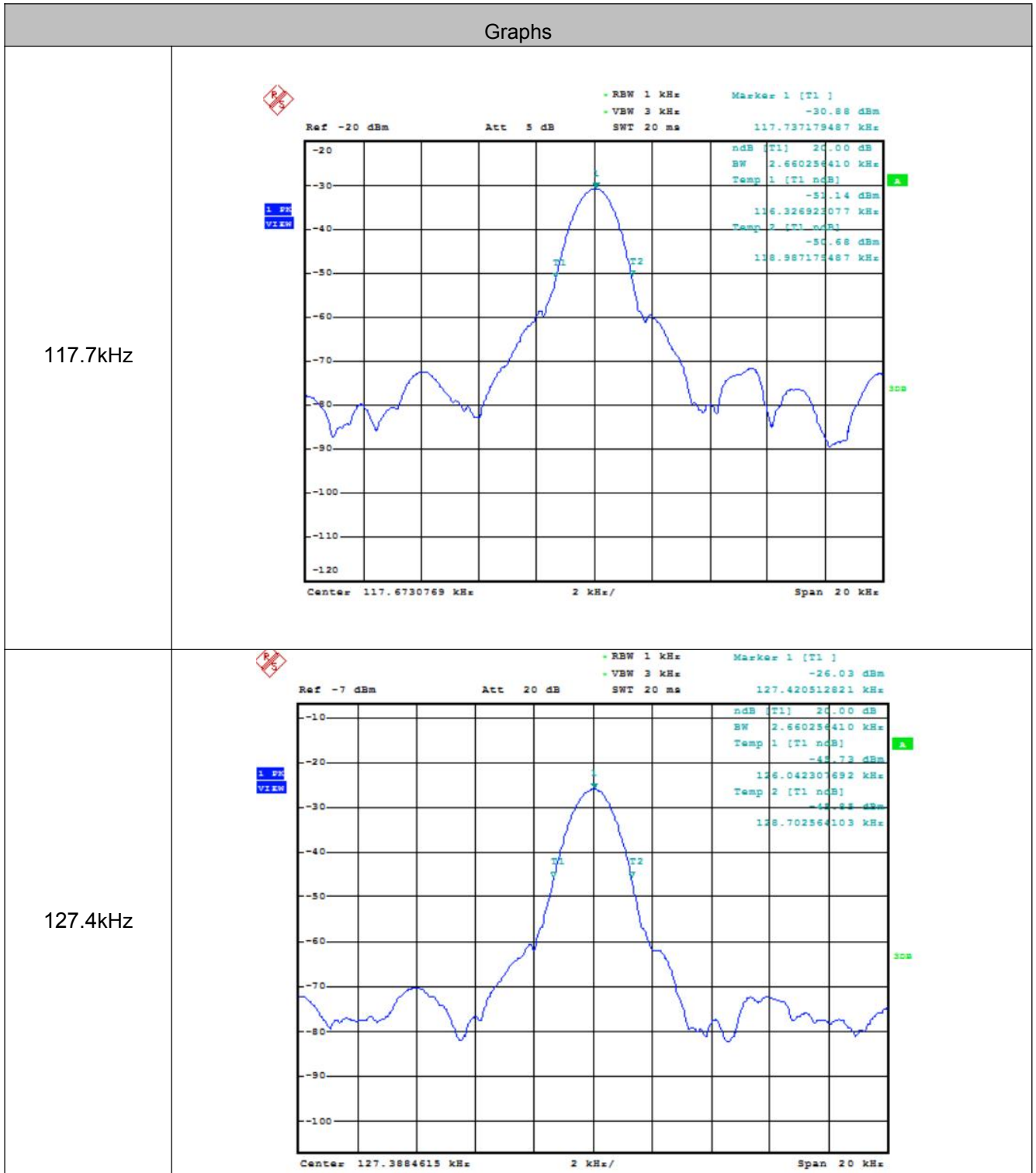
Test Requirement:	47 CFR Part 15C Section 15.215
Test Method:	ANSI C63.10 2013
Test Setup:	 <p style="text-align: center;"><i>Remark: Offset=Cable loss+ attenuation factor.</i></p>
Test Results:	Pass

Measurement Data

Mode a		
Test Frequency (kHz)	20dB Occupy Bandwidth (Hz)	Result
117.7	2660	Pass

Mode c		
Test Frequency (kHz)	20dB Occupy Bandwidth (Hz)	Result
127.4	2660	Pass

Test plot as follows:



5.4 Radiated Spurious Emission & Restricted bands

5.4.1 Spurious Emissions

Test Requirement:	47 CFR Part 15C Section 15.209 and 15.205				
Test Method:	ANSI C63.10 2013				
Test Site:	Measurement Distance: 3m (Semi-Anechoic Chamber)				
Receiver Setup:	Frequency	Detector	RBW	VBW	Remark
	0.009MHz-0.090MHz	Peak	10kHz	30kHz	Peak
	0.009MHz-0.090MHz	Average	10kHz	30kHz	Average
	0.090MHz-0.110MHz	Quasi-peak	10kHz	30kHz	Quasi-peak
	0.110MHz-0.490MHz	Peak	10kHz	30kHz	Peak
	0.110MHz-0.490MHz	Average	10kHz	30kHz	Average
	0.490MHz -30MHz	Quasi-peak	10kHz	30kHz	Quasi-peak
	30MHz-1GHz	Quasi-peak	100 kHz	300kHz	Quasi-peak
	Above 1GHz	Peak	1MHz	3MHz	Peak
Peak		1MHz	10Hz	Average	
Limit:	Frequency	Field strength (microvolt/meter)	Limit (dBuV/m)	Remark	Measurement distance (m)
	0.009MHz-0.490MHz	2400/F(kHz)	-	-	300
	0.490MHz-1.705MHz	24000/F(kHz)	-	-	30
	1.705MHz-30MHz	30	-	-	30
	30MHz-88MHz	100	40.0	Quasi-peak	3
	88MHz-216MHz	150	43.5	Quasi-peak	3
	216MHz-960MHz	200	46.0	Quasi-peak	3
	960MHz-1GHz	500	54.0	Quasi-peak	3
	Above 1GHz	500	54.0	Average	3
<p>Note: 15.35(b), Unless otherwise specified, the limit on peak radio frequency emissions is 20dB above the maximum permitted average emission limit applicable to the equipment under test. This peak limit applies to the total peak emission level radiated by the device.</p>					

Test Setup:

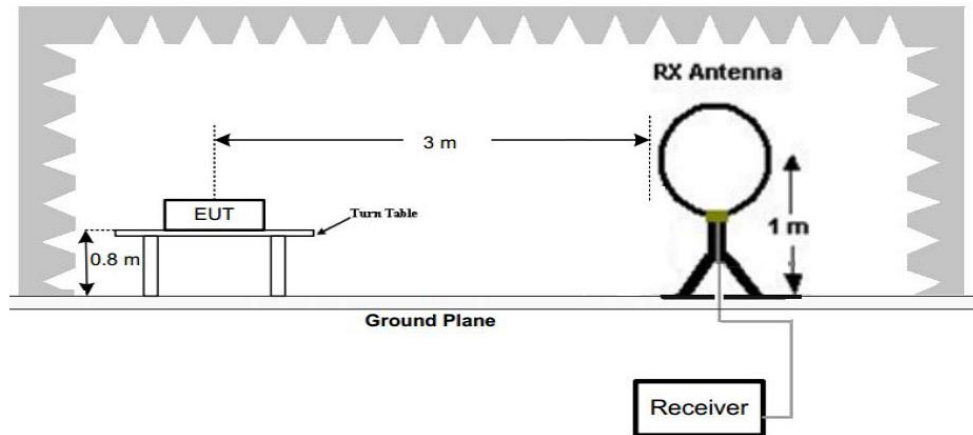


Figure 1. Below 30MHz

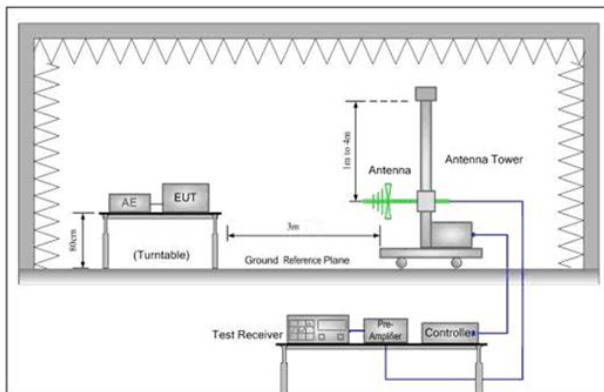


Figure 2. 30MHz to 1GHz

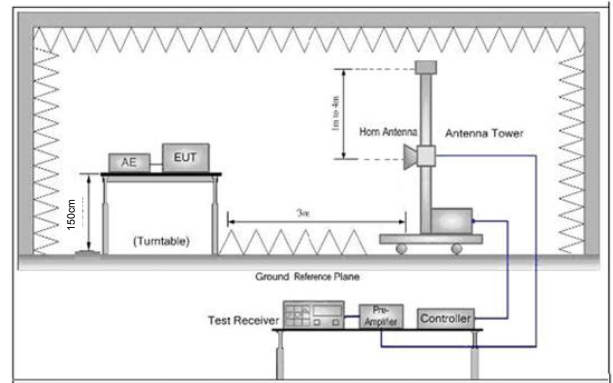


Figure 3. Above 1 GHz

Test Procedure:

- a. 1) Below 1G: The EUT was placed on the top of a rotating table 0.8 meters above the ground at a 3 meter semi-anechoic chamber. The table was rotated 360 degrees to determine the position of the highest radiation.
2) Above 1G: The EUT was placed on the top of a rotating table 1.5 meters above the ground at a 3 meter semi-anechoic chamber. The table was rotated 360 degrees to determine the position of the highest radiation.
Note: For the radiated emission test above 1GHz:
Place the measurement antenna away from each area of the EUT determined to be a source of emissions at the specified measurement distance, while keeping the measurement antenna aimed at the source of emissions at each frequency of significant emissions, with polarization oriented for maximum response. The measurement antenna may have to be higher or lower than the EUT, depending on the radiation pattern of the emission and staying aimed at the emission source for receiving the maximum signal. The final measurement antenna elevation shall be that which maximizes the emissions. The measurement antenna elevation for maximum emissions shall be restricted to a range of heights of from 1 m to 4 m above the ground or reference ground plane.
- b. The EUT was set 3 meters away from the interference-receiving antenna, which was mounted on the top of a variable-height antenna tower.
- c. The antenna height is varied from one meter to four meters above the ground to determine the maximum value of the field strength. Both horizontal and vertical polarizations of the antenna are set to make the

	<p>measurement.</p> <p>d. For each suspected emission, the EUT was arranged to its worst case and then the antenna was tuned to heights from 1 meter to 4 meters (for the test frequency of below 30MHz, the antenna was tuned to heights 1 meter) and the rotatable table was turned from 0 degrees to 360 degrees to find the maximum reading.</p> <p>e. The test-receiver system was set to Peak Detect Function and Specified Bandwidth with Maximum Hold Mode.</p> <p>f. If the emission level of the EUT in peak mode was 10dB lower than the limit specified, then testing could be stopped and the peak values of the EUT would be reported. Otherwise the emissions that did not have 10dB margin would be re-tested one by one using peak, quasi-peak or average method as specified and then reported in a data sheet.</p> <p>g. Repeat above procedures until all frequencies measured was complete.</p>
Test Results:	Pass

Radiated Emission below 9k~30MHz	
the worst case	
Test mode:	Mode a

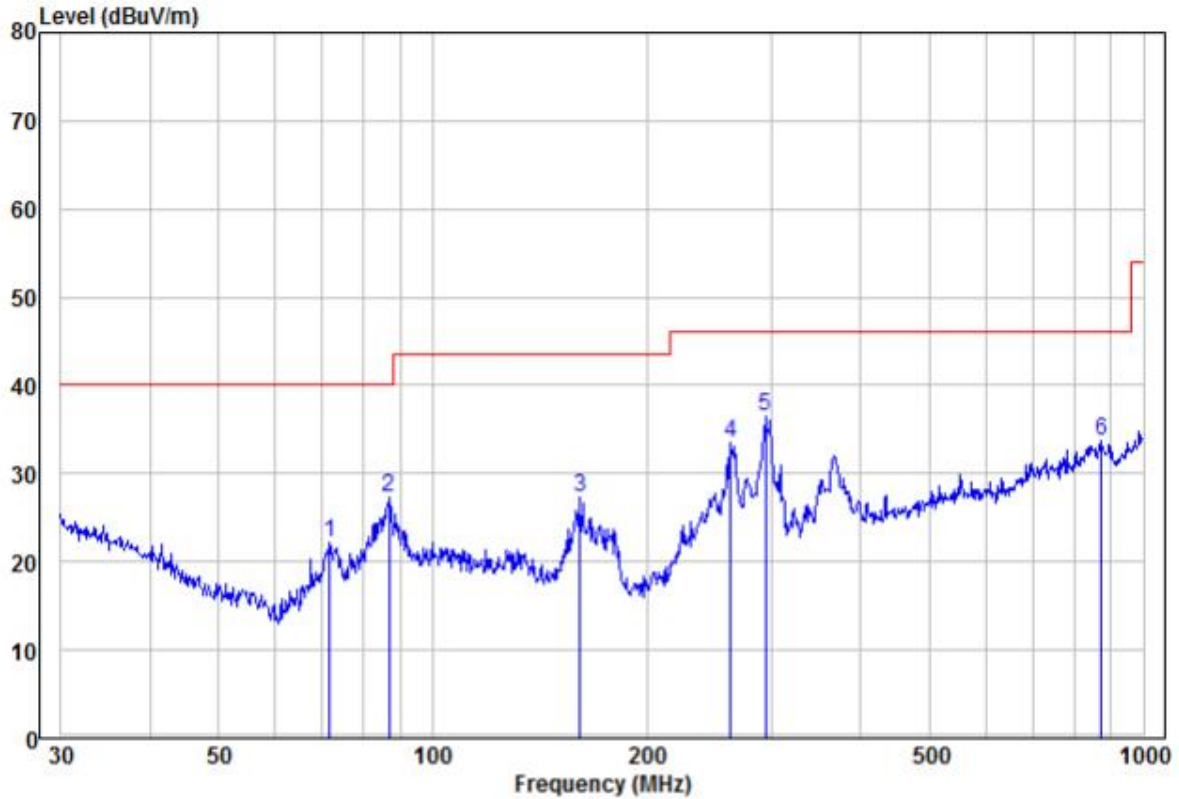
Frequency MHz	Polarization	Reading dB(uV)	Factor dB (1/m)	Level dB(uV/m) Peak	Limit dB(uV/m) Average	Margin dB	Pass/Fail
0.1177	Face	40.11	19.63	59.74	106.19	-46.45	Pass
0.1177	Side	42.59	19.63	62.22	106.19	-43.97	Pass

Radiated Emission below 9k~30MHz	
the worst case	
Test mode:	Mode c

Frequency MHz	Polarization	Reading dB(uV)	Factor dB (1/m)	Level dB(uV/m) Peak	Limit dB(uV/m) Average	Margin dB	Pass/Fail
0.1274	Face	39.15	19.63	58.78	105.50	-46.72	Pass
0.1274	Side	43.66	19.63	63.29	105.50	-42.21	Pass

Note: No other emissions found between lowest internal used/generated frequencies to 30MHz. The peak level of the emission is less than the average limit, so the average level shall be less than 1 the limit without test.

Radiated Emission		
30MHz~1GHz, the worst case		
Test mode:	Mode a	Horizontal



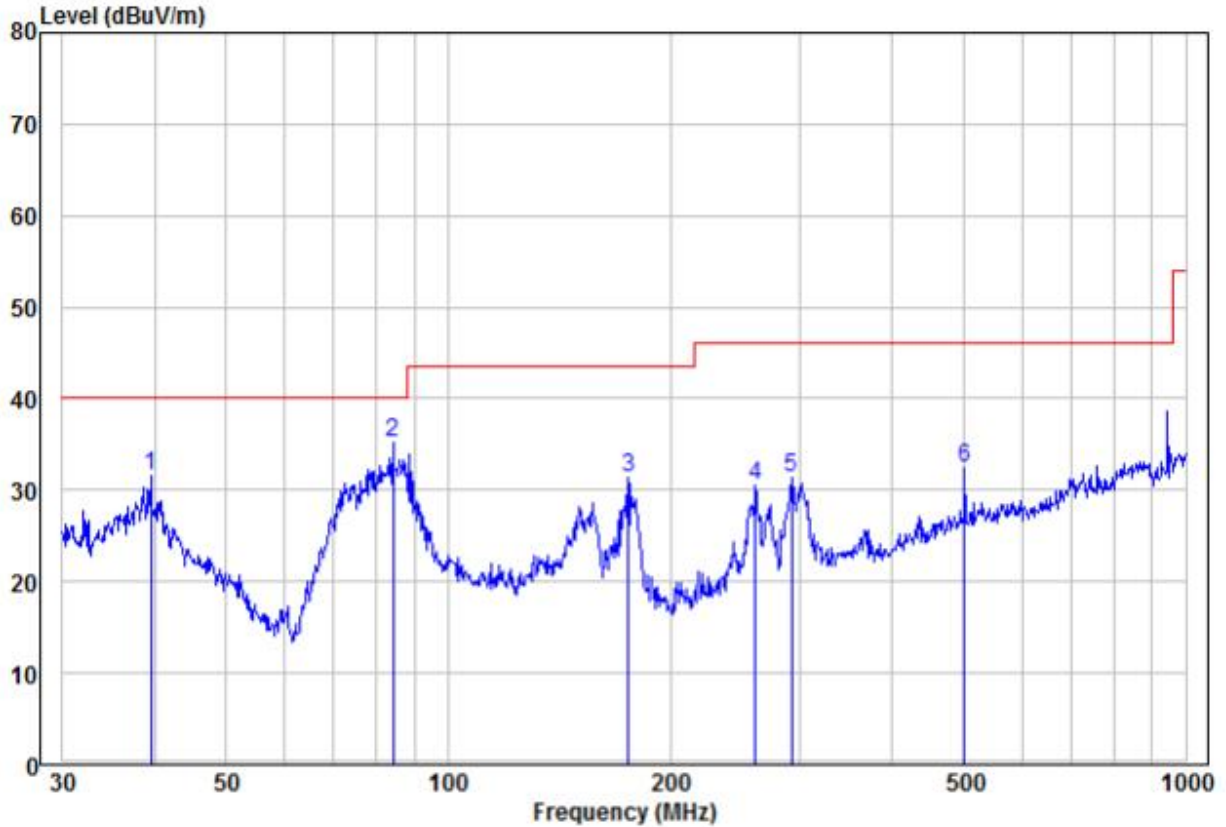
	Read Freq	Read Level	Read Factor	Limit Level	Limit Line	Over Limit	Remark	Pol/Phase
	MHz	dBuV	dB/m	dBuV/m	dBuV/m	dB		
1	71.58	13.79	8.41	22.20	40.00	-17.80	Peak	HORIZONTAL
2	86.81	17.41	9.95	27.36	40.00	-12.64	Peak	HORIZONTAL
3	161.47	19.62	7.77	27.39	43.50	-16.11	Peak	HORIZONTAL
4	262.90	20.93	12.51	33.44	46.00	-12.56	Peak	HORIZONTAL
5 pp	294.11	22.98	13.54	36.52	46.00	-9.48	Peak	HORIZONTAL
6	872.18	9.72	23.96	33.68	46.00	-12.32	Peak	HORIZONTAL

Remark:

The field strength is calculated by adding the Antenna Factor, Cable Factor & Preamplifier. The basic equation with a sample calculation is as follows:

$$\text{Final Test Level} = \text{Receiver Reading} + \text{Antenna Factor} + \text{Cable Factor}$$

30MHz~1GHz, the worst case		
Test mode:	Mode a	Vertical



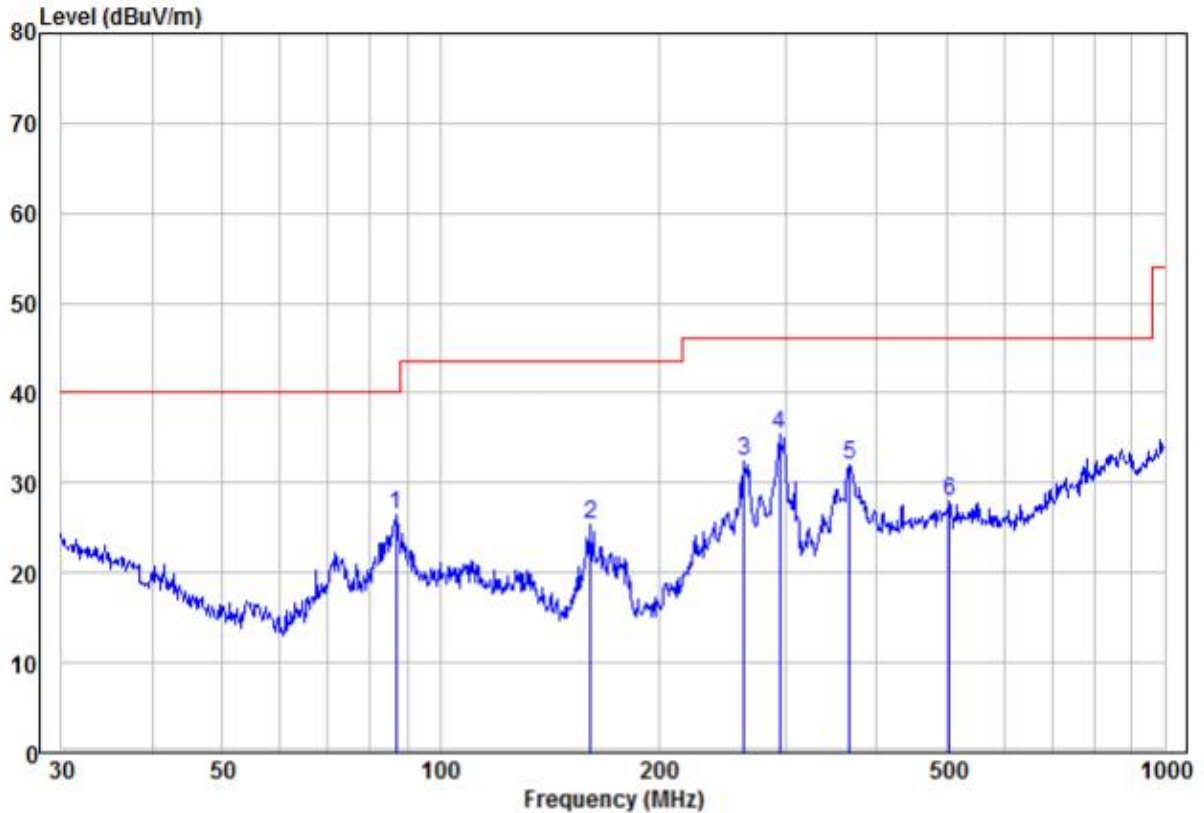
	Read Freq	Read Level	Factor	Level	Limit	Over	Remark	Pol/Phase
	MHz	dBuV	dB/m	dBuV/m	dBuV/m	dB		
1	39.58	18.71	12.95	31.66	40.00	-8.34	Peak	VERTICAL
2	84.11	25.36	9.88	35.24	40.00	-4.76	Peak	VERTICAL
3	175.65	23.36	8.03	31.39	43.50	-12.11	Peak	VERTICAL
4	261.06	18.15	12.44	30.59	46.00	-15.41	Peak	VERTICAL
5	292.06	17.83	13.46	31.29	46.00	-14.71	Peak	VERTICAL
6	501.18	14.13	18.29	32.42	46.00	-13.58	Peak	VERTICAL

Remark:

The field strength is calculated by adding the Antenna Factor, Cable Factor & Preamplifier. The basic equation with a sample calculation is as follows:

$$\text{Final Test Level} = \text{Receiver Reading} + \text{Antenna Factor} + \text{Cable Factor}$$

30MHz~1GHz, the worst case		
Test mode:	Mode c	Horizontal



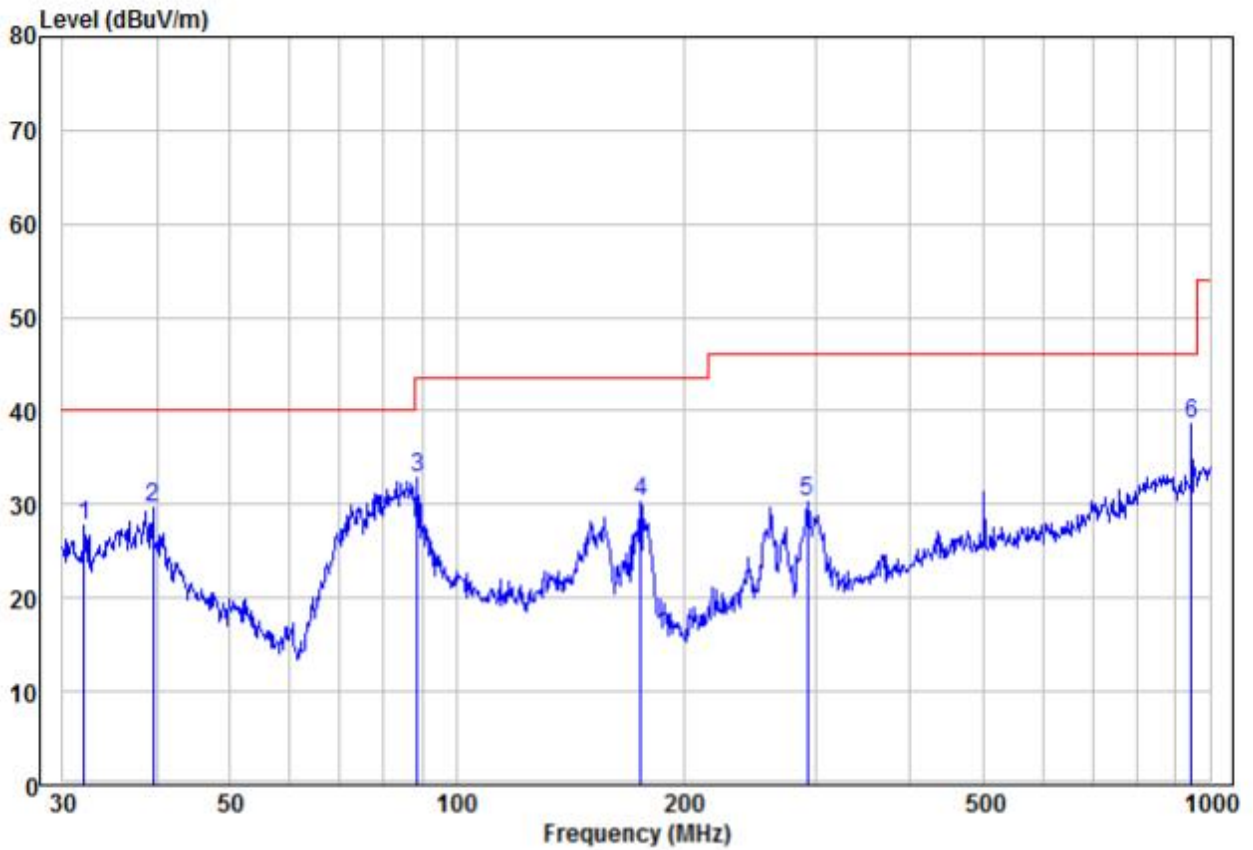
	Read		Limit	Over			
Freq	Level	Factor	Level	Line	Limit	Remark	Pol/Phase
MHz	dBuV	dB/m	dBuV/m	dBuV/m	dB		
1	86.81	16.41	9.95	26.36	40.00	-13.64 Peak	HORIZONTAL
2	161.47	17.62	7.77	25.39	43.50	-18.11 Peak	HORIZONTAL
3	262.90	19.93	12.51	32.44	46.00	-13.56 Peak	HORIZONTAL
4 pp	294.11	21.98	13.54	35.52	46.00	-10.48 Peak	HORIZONTAL
5	366.82	16.67	15.36	32.03	46.00	-13.97 Peak	HORIZONTAL
6	504.71	9.62	18.33	27.95	46.00	-18.05 Peak	HORIZONTAL

Remark:

The field strength is calculated by adding the Antenna Factor, Cable Factor & Preamplifier. The basic equation with a sample calculation is as follows:

$$\text{Final Test Level} = \text{Receiver Reading} + \text{Antenna Factor} + \text{Cable Factor}$$

30MHz~1GHz, the worst case		
Test mode:	Mode c	Vertical



	Read Freq	Read Level	Factor	Level	Limit Line	Over Limit	Remark	Pol/Phase
	MHz	dBuV	dB/m	dBuV/m	dBuV/m	dB		
1	32.07	12.32	15.38	27.70	40.00	-12.30	Peak	VERTICAL
2	39.58	16.71	12.95	29.66	40.00	-10.34	Peak	VERTICAL
3	88.65	22.84	9.98	32.82	43.50	-10.68	Peak	VERTICAL
4	175.65	22.36	8.03	30.39	43.50	-13.11	Peak	VERTICAL
5	292.06	16.83	13.46	30.29	46.00	-15.71	Peak	VERTICAL
6 pp	945.44	15.07	23.62	38.69	46.00	-7.31	Peak	VERTICAL

Remark:

The field strength is calculated by adding the Antenna Factor, Cable Factor & Preamplifier. The basic equation with a sample calculation is as follows:

$$\text{Final Test Level} = \text{Receiver Reading} + \text{Antenna Factor} + \text{Cable Factor}$$

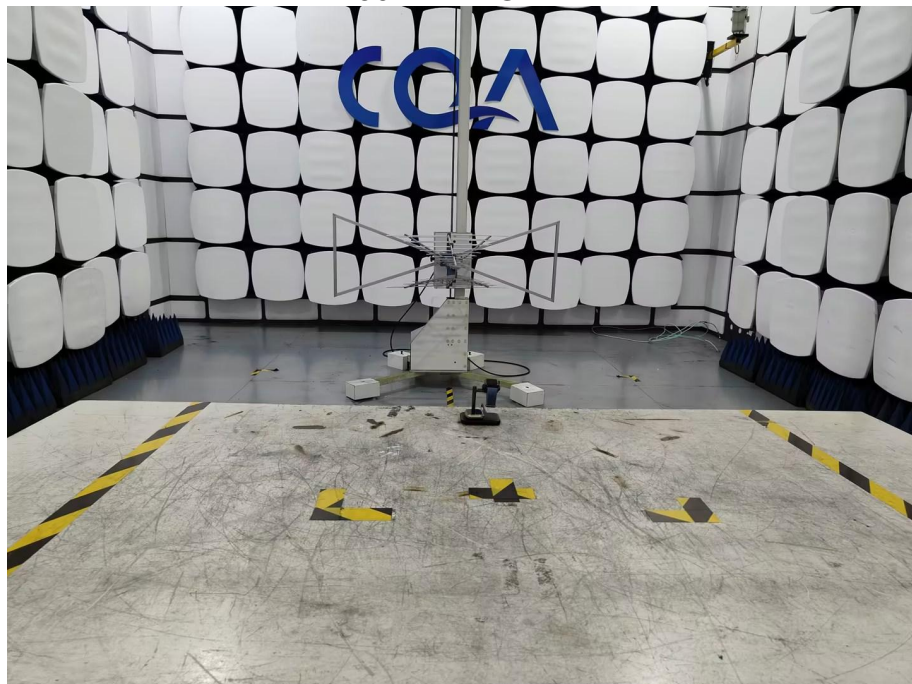
6 Photographs - EUT Test Setup

6.1 Radiated Emission

9kHz~30MHz:



30MHz~1GHz:



6.2 Conducted Emission



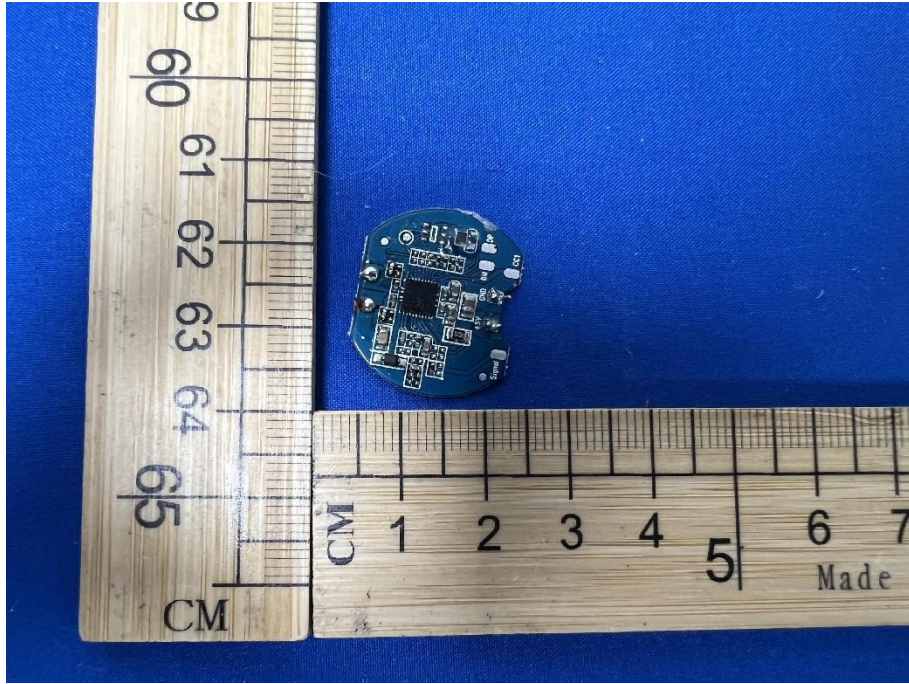
7 Photographs - EUT Constructional Details

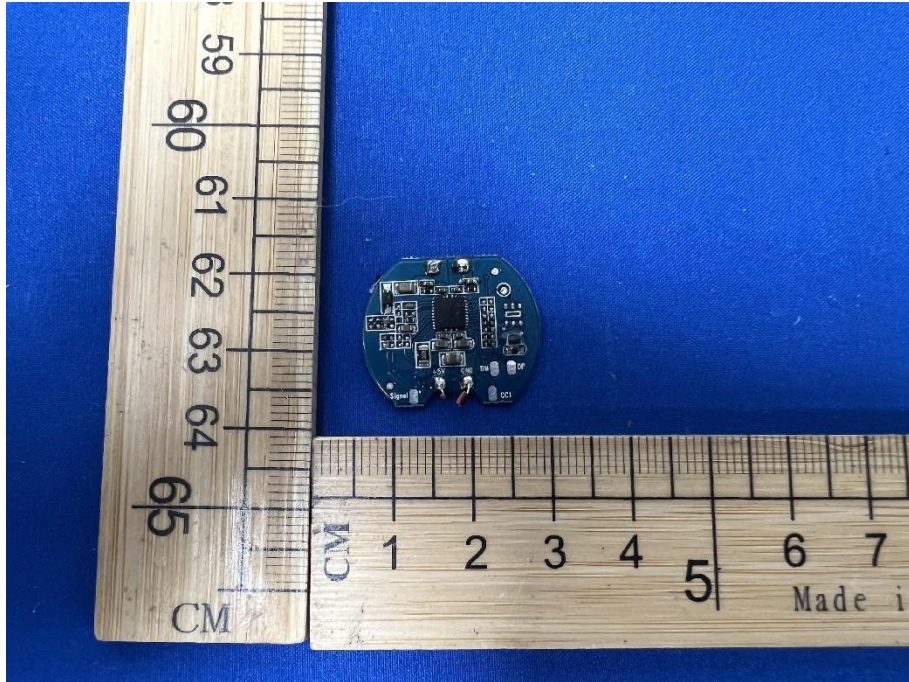


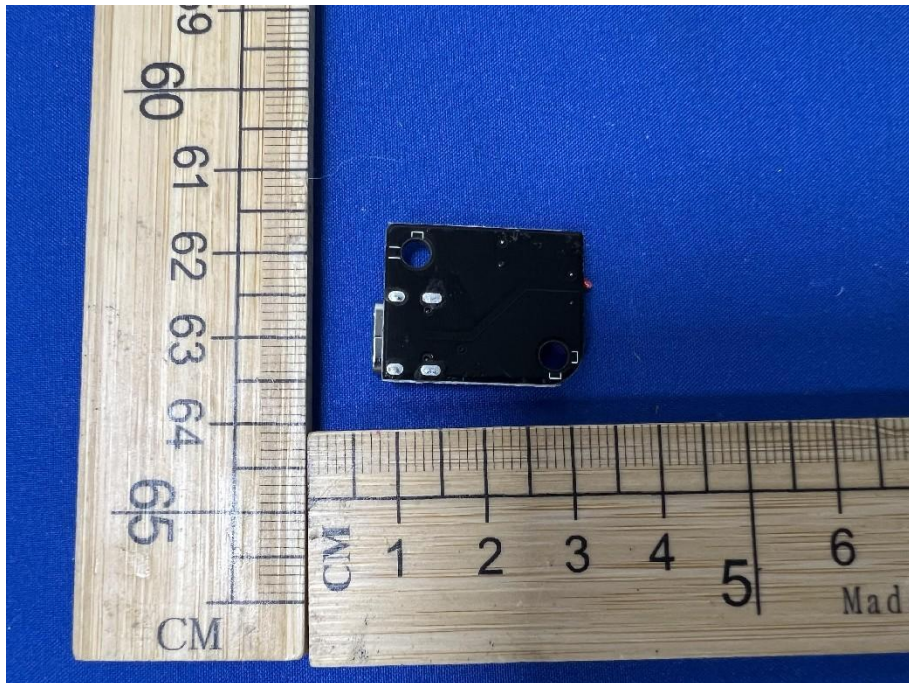


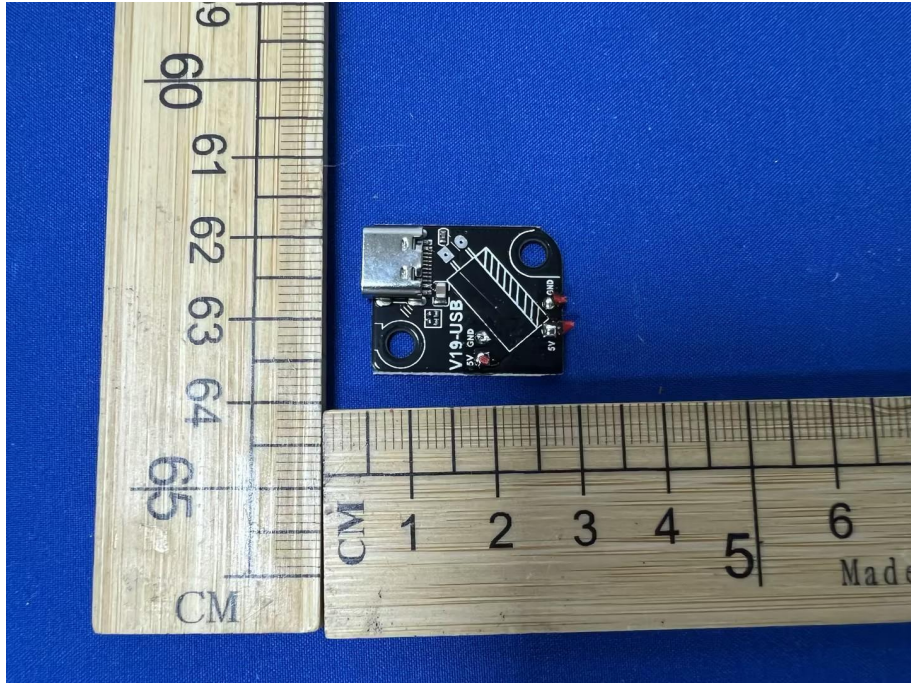












*** END OF REROPT ***