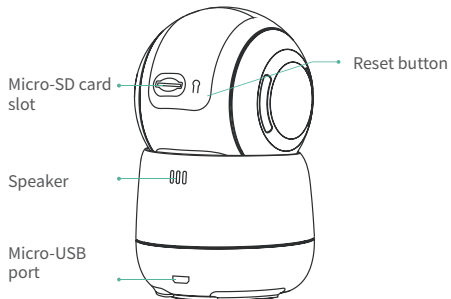
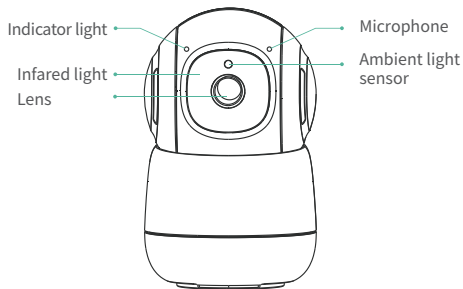


Smart PTZ Camera

Operation Instruction



Product appearance



Packing list

1. Camera*1
2. Bracket*1
3. Power cable*1
4. Power adapter*1
5. Mounting kit*1
6. Operation instruction*1

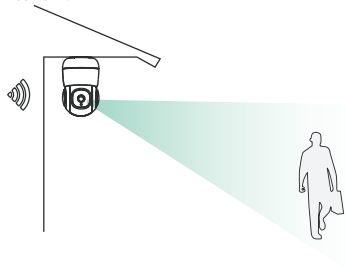
Product specification

Item	Specification
Horizontal angle	355°
Vertical angle	110°
Camera Lens	Field of view 100°
Image resolution	1080P
Video bit rate	Adaptive
Image coding standard	H.265
Audio	Duplex two-way audio intercom
Storage media	Micro SD card (Up to 128GB)
Night vision light source	Infrared light
Network	WIFI (2.4GHz 802.11b/g/n)
Power	DC 5V/1.5A
Operating temperature	-20° ~ 45°C
Size(LxWxH)	115.5mm*72.0mm*72.0mm

Install the camera

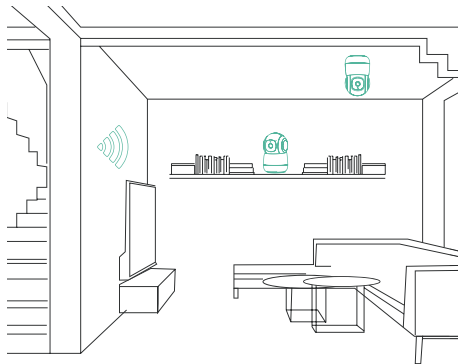
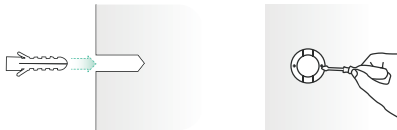
(1).Select a good spot for your camera

Select a good spot for your camera, please install the camera in a position where its view is not blocked and ensure that it is within the coverage of the Wi-Fi network.



(2) Install the bracket

Fix the camera to a desired location. You can directly place the camera on a flat surface, or fix the bracket to the wall or ceiling by screws, and then screw the camera to the fixed base.



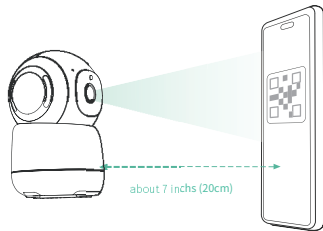
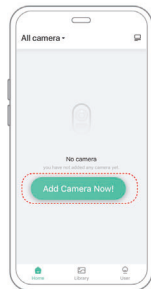
Download and install the App

The camera supports Android and iOS App. For your best experience, please scan the QR code below, or search Vicoo in the App store to download and install the App, and follow the instruction to complete the user registration.



Set up the camera

Click the "Add Device" in the App and enter the Wi-Fi network name and password that you want the camera to connect. Target the camera at the QR code of the mobile App, with a distance of about 20cm (about 7 inches) until the camera emits a "Di" sound, which represents the scanning is succeeded and the pairing is started.



FCC Statement

This equipment has been tested and found to comply with the limits for a Class B digital device, pursuant to part 15 of the FCC rules. These limits are designed to provide reasonable protection against harmful interference in a residential installation. This equipment generates, uses and can radiate radio frequency energy and, if not installed and used in accordance with the instructions, may cause harmful interference to radio communications. However, there is no guarantee that interference will not occur in a particular installation. If this equipment does cause harmful interference to radio or television reception, which can be determined by turning the equipment off and on, the user is encouraged to try to correct the interference by one or more of the following measures:

- Reorient or relocate the receiving antenna.
- Increase the separation between the equipment and receiver.
- Connect the equipment into an outlet on a circuit different from that to which the receiver is connected.
- Consult the dealer or an experienced radio/TV technician for help.

To assure continued compliance, any changes or modifications not expressly approved by the party.

Responsible for compliance could void the user's authority to operate this equipment. (Example- use only shielded interface cables when connecting to computer or peripheral devices).

This equipment complies with Part 15 of the FCC Rules. Operation is subject to the following two conditions:

- (1) This device may not cause harmful interference, and
- (2) This device must accept any interference received, including interference that may cause undesired operation.

FCC Radiation Exposure Statement:

The equipment complies with FCC Radiation exposure limits set forth for uncontrolled environment. This equipment should be installed and operated with minimum distance 20cm between the radiator and your body.