

Appendix A

Detailed System Check Results

1. System Performance Check
System Performance Check 750 MHz Head
System Performance Check 835 MHz Head
System Performance Check 1750 MHz Head
System Performance Check 1900 MHz Head
System Performance Check 2450 MHz Head
System Performance Check 2600 MHz Head
System Performance Check 5250 MHz Head
System Performance Check 5600 MHz Head
System Performance Check 5750 MHz Head

Test Laboratory: SGS-SAR Lab

System Performance Check 750 MHz Head**DUT: D750V3; Type: Dipole; Serial: 1160**

Communication System: UID 0, CW (0); Frequency: 750 MHz; Duty Cycle: 1:1

Medium: HSL750; Medium parameters used: $f = 750$ MHz; $\sigma = 0.86$ S/m; $\epsilon_r = 43.212$; $\rho = 1000$ kg/m³

Phantom section: Flat Section

DASY 5 Configuration:

- Probe: ES3DV3 - SN3137; ConvF(6.3, 6.3, 6.3); Calibrated: 2022/9/16
- Sensor-Surface: 3mm (Mechanical Surface Detection)
- Electronics: DAE4 Sn896; Calibrated: 2023/3/17
- Phantom: SAM 6; Type: SAM Twin; Serial: 1481
- DASY52 52.10.4(1535); SEMCAD X 14.6.14(7501)

Configuration/d=15mm, Pin=250mW/Area Scan (8x13x1): Measurement grid: dx=15mm, dy=15mm

Maximum value of SAR (measured) = 2.06 W/kg

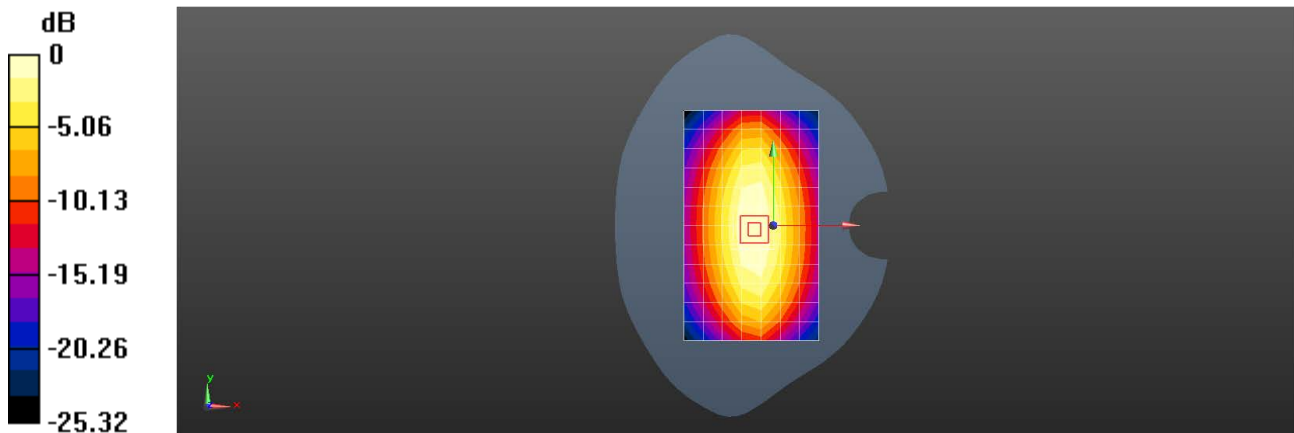
Configuration/d=15mm, Pin=250mW/Zoom Scan (5x5x7)/Cube 0: Measurement grid: dx=8mm, dy=8mm, dz=5mm

Reference Value = 49.19 V/m; Power Drift = -0.03 dB

Peak SAR (extrapolated) = 2.90 W/kg

SAR(1 g) = 1.93 W/kg; SAR(10 g) = 1.28 W/kg

Maximum value of SAR (measured) = 2.25 W/kg



0 dB = 2.06 W/kg = 3.14 dBW/kg

Test Laboratory: SGS-SAR Lab

System Performance Check 835 MHz Head**DUT: D835V2; Type: Dipole; Serial: 4d105**

Communication System: UID 0, CW (0); Frequency: 835 MHz; Duty Cycle: 1:1

Medium: HSL835; Medium parameters used: $f = 835$ MHz; $\sigma = 0.88$ S/m; $\epsilon_r = 42.918$; $\rho = 1000$ kg/m³

Phantom section: Flat Section

DASY 5 Configuration:

- Probe: EX3DV4 - SN7620; ConvF(10.73, 10.73, 10.73); Calibrated: 2022/11/20
- Sensor-Surface: 1.4mm (Mechanical Surface Detection)
- Electronics: DAE4 Sn1267; Calibrated: 2022/12/10
- Phantom: SAM 1; Type: SAM; Serial: 1912
- DASY52 52.10.4(1527); SEMCAD X 14.6.14(7483)

Configuration/d=15mm, Pin=250mW/Area Scan (6x13x1): Measurement grid: dx=15mm, dy=15mm

Maximum value of SAR (measured) = 2.65 W/kg

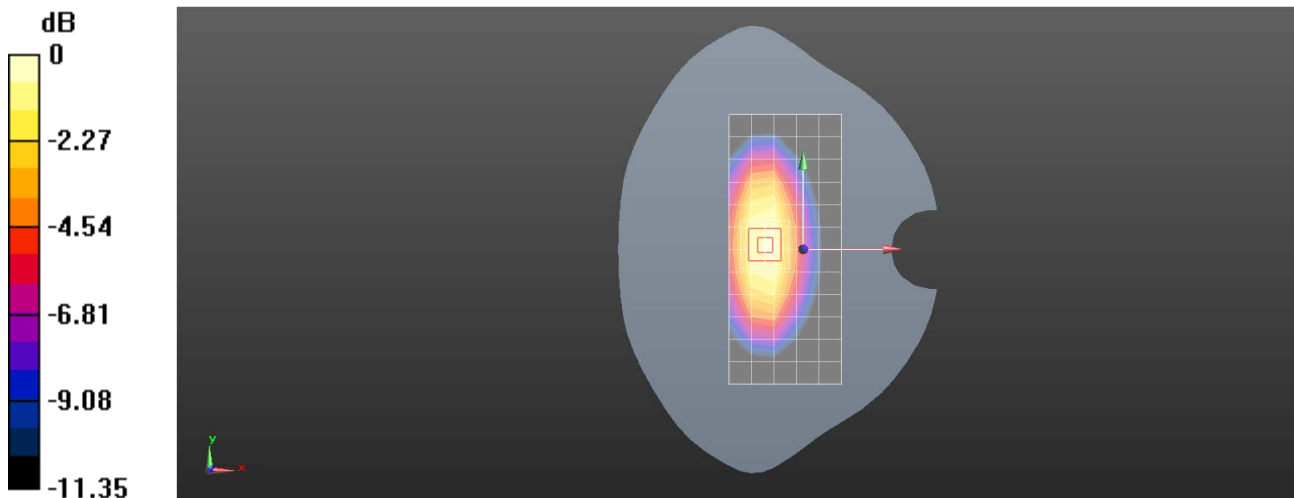
Configuration/d=15mm, Pin=250mW/Zoom Scan (5x5x7)/Cube 0: Measurement grid: dx=8mm, dy=8mm, dz=5mm

Reference Value = 48.77 V/m; Power Drift = 0.10 dB

Peak SAR (extrapolated) = 3.55 W/kg

SAR(1 g) = 2.29 W/kg; SAR(10 g) = 1.47 W/kg

Maximum value of SAR (measured) = 2.96 W/kg



0 dB = 2.96 W/kg = 4.71 dBW/kg

Test Laboratory: SGS-SAR Lab

System Performance Check 835 MHz Head**DUT: D835V2; Type: Dipole; Serial:4d105**

Communication System: UID 0, CW (0); Frequency: 835 MHz;Duty Cycle: 1:1

Medium: HSL835;Medium parameters used: $f = 835$ MHz; $\sigma = 0.915$ S/m; $\epsilon_r = 42.703$; $\rho = 1000$ kg/m³

Phantom section: Flat Section

DASY 5 Configuration:

- Probe: ES3DV3 - SN3137; ConvF(6.09, 6.09, 6.09); Calibrated: 2022/9/16
- Sensor-Surface: 3mm (Mechanical Surface Detection)
- Electronics: DAE4 Sn896; Calibrated: 2023/3/17
- Phantom: SAM 6; Type: SAM Twin; Serial: 1481
- DASY52 52.10.4(1535); SEMCAD X 14.6.14(7501)

Configuration/d=15mm, Pin=250mW/Area Scan (8x13x1): Measurement grid: dx=15mm, dy=15mm

Maximum value of SAR (measured) = 2.67 W/kg

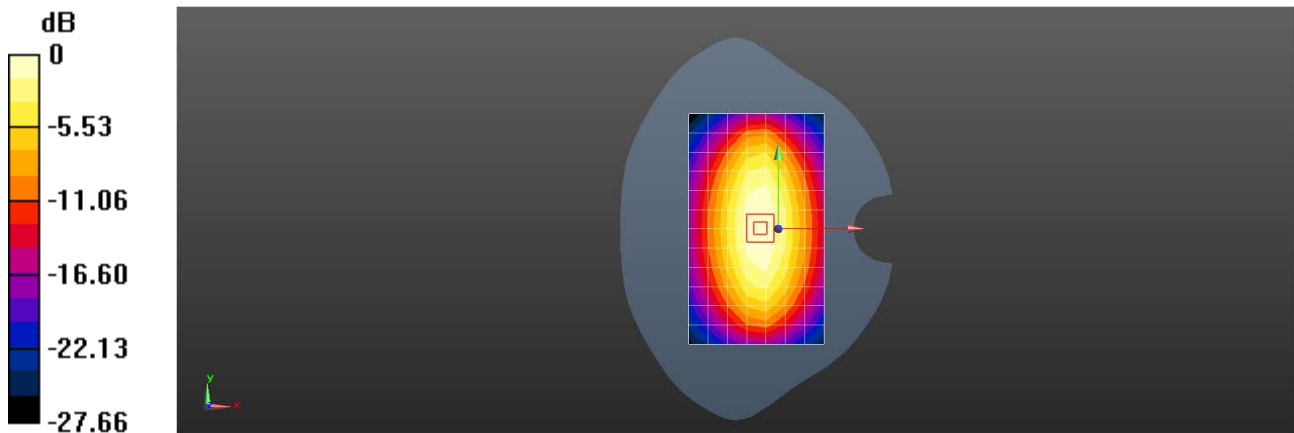
Configuration/d=15mm, Pin=250mW/Zoom Scan (5x5x7)/Cube 0: Measurement grid: dx=8mm, dy=8mm, dz=5mm

Reference Value = 52.90 V/m; Power Drift = -0.07 dB

Peak SAR (extrapolated) = 3.61 W/kg

SAR(1 g) = 2.42 W/kg; SAR(10 g) = 1.59 W/kg

Maximum value of SAR (measured) = 2.83 W/kg



0 dB = 2.67 W/kg = 4.27 dBW/kg

Test Laboratory: SGS-SAR Lab

System Performance Check 835 MHz Head**DUT: D835V2; Type: Dipole; Serial:4d105**

Communication System: UID 0, CW (0); Frequency: 835 MHz;Duty Cycle: 1:1

Medium: HSL835;Medium parameters used: $f = 835 \text{ MHz}$; $\sigma = 0.925 \text{ S/m}$; $\epsilon_r = 42.456$; $\rho = 1000 \text{ kg/m}^3$

Phantom section: Flat Section

DASY 5 Configuration:

- Probe: ES3DV3 - SN3137; ConvF(6.09, 6.09, 6.09); Calibrated: 2022/9/16
- Sensor-Surface: 3mm (Mechanical Surface Detection)
- Electronics: DAE4 Sn896; Calibrated: 2023/3/17
- Phantom: SAM 6; Type: SAM Twin; Serial: 1481
- DASY52 52.10.4(1535); SEMCAD X 14.6.14(7501)

Configuration/d=15mm, Pin=250mW/Area Scan (8x13x1): Measurement grid: $dx=15\text{mm}$, $dy=15\text{mm}$

Maximum value of SAR (measured) = 2.79 W/kg

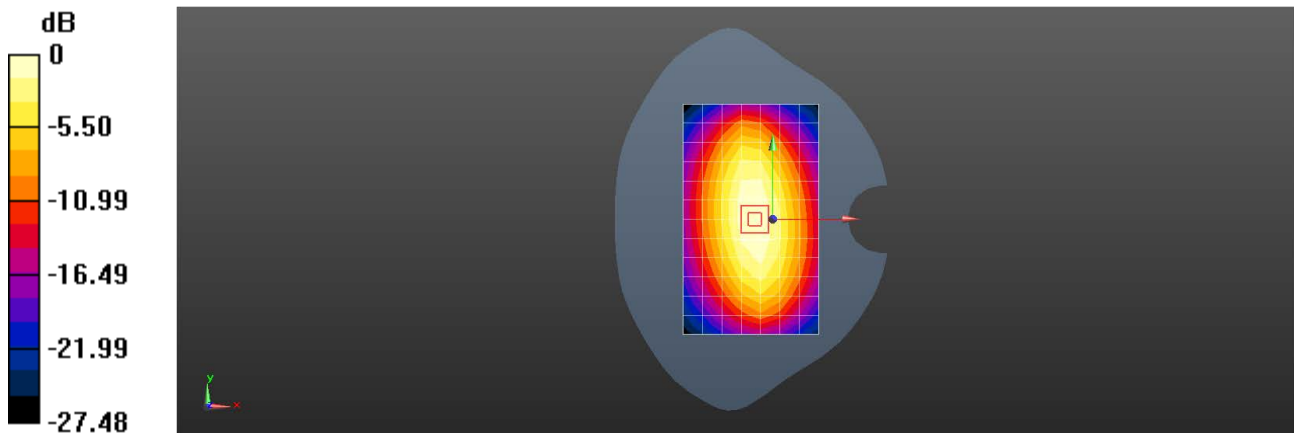
Configuration/d=15mm, Pin=250mW/Zoom Scan (5x5x7)/Cube 0: Measurement grid: $dx=8\text{mm}$, $dy=8\text{mm}$, $dz=5\text{mm}$

Reference Value = 54.23 V/m; Power Drift = -0.08 dB

Peak SAR (extrapolated) = 3.79 W/kg

SAR(1 g) = 2.53 W/kg; SAR(10 g) = 1.67 W/kg

Maximum value of SAR (measured) = 2.96 W/kg



0 dB = 2.79 W/kg = 4.46 dBW/kg

Test Laboratory: SGS-SAR Lab

System Performance Check 835 MHz Head**DUT: D835V2; Type: Dipole; Serial:4d105**

Communication System: UID 0, CW (0); Frequency: 835 MHz;Duty Cycle: 1:1

Medium: HSL835;Medium parameters used: $f = 835 \text{ MHz}$; $\sigma = 0.88 \text{ S/m}$; $\epsilon_r = 42.918$; $\rho = 1000 \text{ kg/m}^3$

Phantom section: Flat Section

DASY 5 Configuration:

- Probe: ES3DV3 - SN3137; ConvF(6.09, 6.09, 6.09); Calibrated: 2022/9/16
- Sensor-Surface: 3mm (Mechanical Surface Detection)
- Electronics: DAE4 Sn896; Calibrated: 2023/3/17
- Phantom: SAM 6; Type: SAM Twin; Serial: 1481
- DASY52 52.10.4(1535); SEMCAD X 14.6.14(7501)

Configuration/d=15mm, Pin=250mW/Area Scan (8x13x1): Measurement grid: $dx=15\text{mm}$, $dy=15\text{mm}$

Maximum value of SAR (measured) = 2.52 W/kg

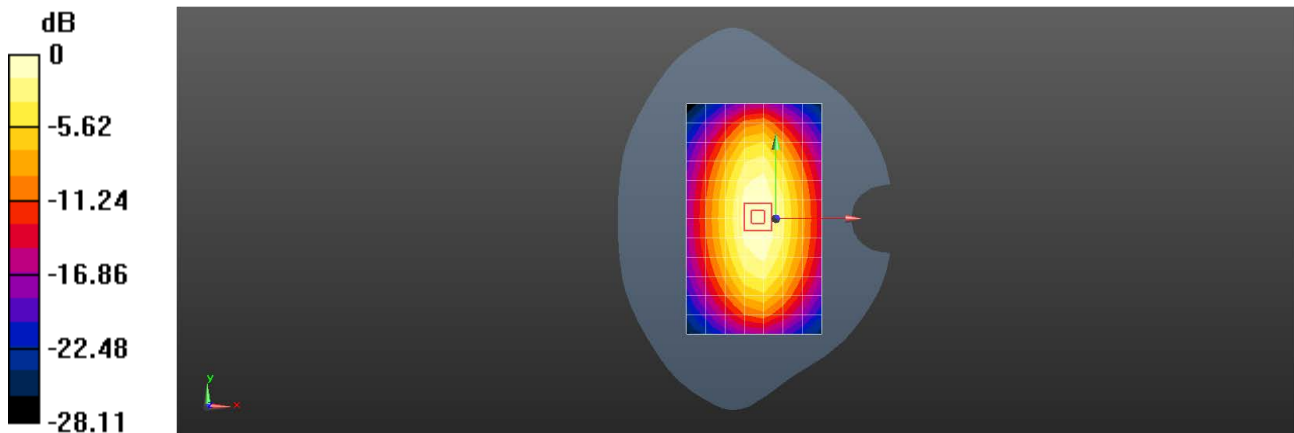
Configuration/d=15mm, Pin=250mW/Zoom Scan (5x5x7)/Cube 0: Measurement grid: $dx=8\text{mm}$, $dy=8\text{mm}$, $dz=5\text{mm}$

Reference Value = 52.49 V/m; Power Drift = -0.11 dB

Peak SAR (extrapolated) = 3.37 W/kg

SAR(1 g) = 2.26 W/kg; SAR(10 g) = 1.48 W/kg

Maximum value of SAR (measured) = 2.64 W/kg



0 dB = 2.52 W/kg = 4.01 dBW/kg

Test Laboratory: SGS-SAR Lab

System Performance Check 1750MHz Head**DUT: D1750V2; Type: Dipole; Serial: 1149**

Communication System: UID 0, CW (0); Frequency: 1750 MHz; Duty Cycle: 1:1

Medium: HSL1750; Medium parameters used: $f = 1750$ MHz; $\sigma = 1.306$ S/m; $\epsilon_r = 39.961$; $\rho = 1000$ kg/m³

Phantom section: Flat Section

DASY 5 Configuration:

- Probe: EX3DV4 - SN3789; ConvF(7.65, 7.65, 7.65); Calibrated: 2022/9/30
- Sensor-Surface: 1.4mm (Mechanical Surface Detection)
- Electronics: DAE4 Sn702; Calibrated: 2022/11/9
- Phantom: SAM 4; Type: SAM; Serial: 1913
- DASY52 52.10.4(1527); SEMCAD X 14.6.14(7483)

Configuration/d=10mm, Pin=250mW/Area Scan (7x10x1): Measurement grid: dx=15mm, dy=15mm

Maximum value of SAR (measured) = 12.1 W/kg

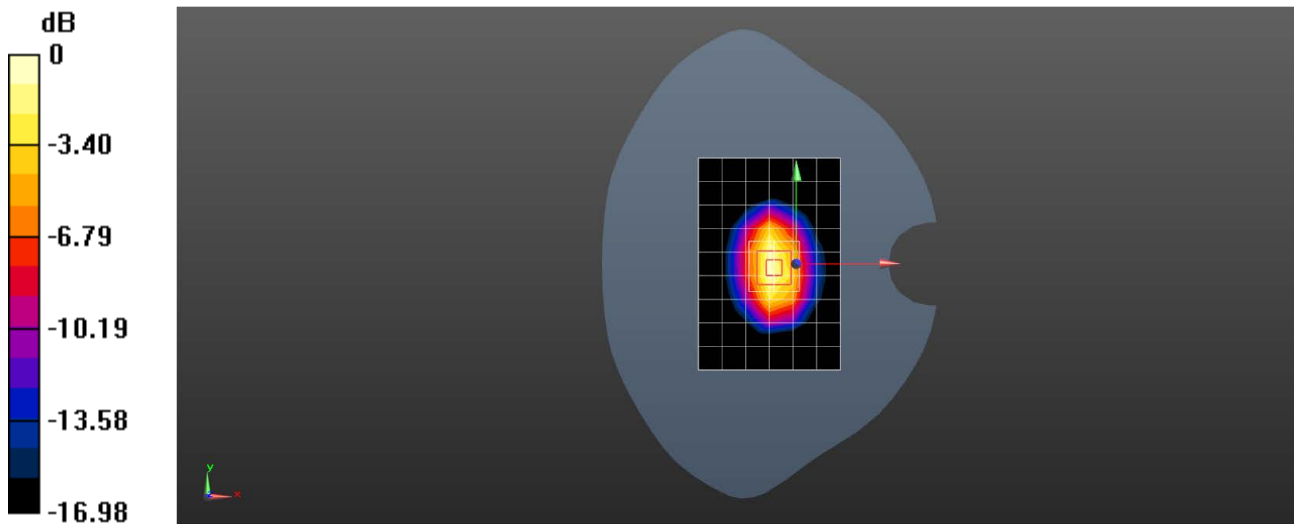
Configuration/d=10mm, Pin=250mW/Zoom Scan (5x5x7)/Cube 0: Measurement grid: dx=8mm, dy=8mm, dz=5mm

Reference Value = 84.79 V/m; Power Drift = -0.08 dB

Peak SAR (extrapolated) = 16.2 W/kg

SAR(1 g) = 8.77 W/kg; SAR(10 g) = 4.67 W/kg

Maximum value of SAR (measured) = 13.6 W/kg



0 dB = 13.6 W/kg = 11.34 dBW/kg

Test Laboratory: SGS-SAR Lab

System Performance Check 1900MHz Head**DUT: D1900V2; Type: Dipole; Serial: 5d028**

Communication System: UID 0, CW (0); Frequency: 1900 MHz; Duty Cycle: 1:1

Medium: HSL1900; Medium parameters used: $f = 1900$ MHz; $\sigma = 1.447$ S/m; $\epsilon_r = 40.757$; $\rho = 1000$ kg/m³

Phantom section: Flat Section

DASY 5 Configuration:

- Probe: EX3DV4 - SN3789; ConvF(7.3, 7.3, 7.3); Calibrated: 2022/9/30
- Sensor-Surface: 1.4mm (Mechanical Surface Detection)
- Electronics: DAE4 Sn702; Calibrated: 2022/11/9
- Phantom: SAM 4; Type: SAM; Serial: 1913
- DASY52 52.10.4(1527); SEMCAD X 14.6.14(7483)

Configuration/d=10mm, Pin=250mW/Area Scan (8x10x1): Measurement grid: dx=15mm, dy=15mm

Maximum value of SAR (measured) = 12.1 W/kg

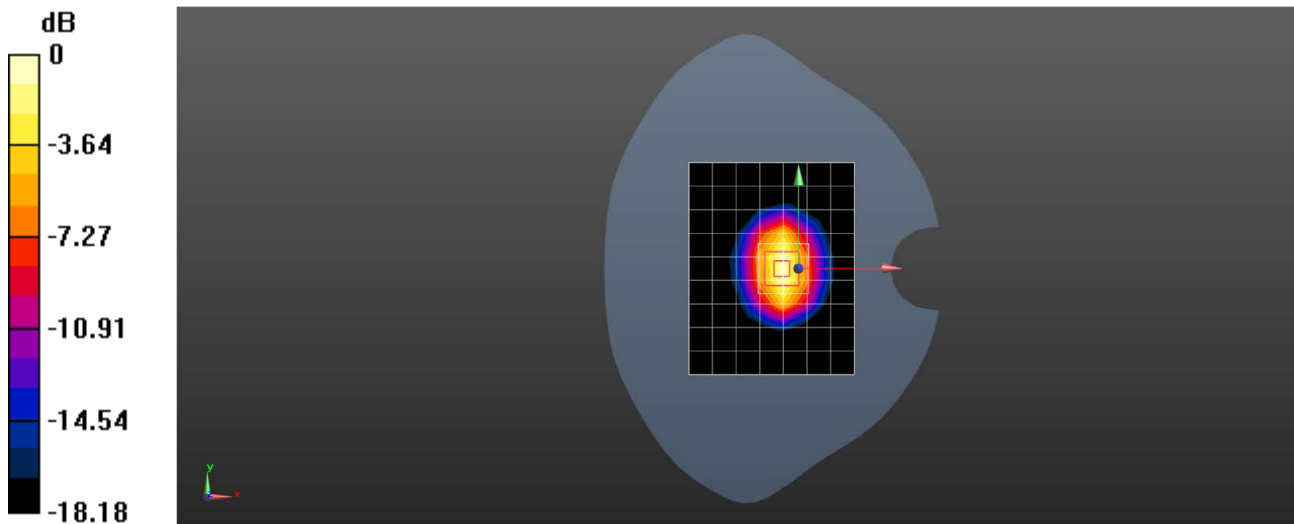
Configuration/d=10mm, Pin=250mW/Zoom Scan (5x5x7)/Cube 0: Measurement grid: dx=8mm, dy=8mm, dz=5mm

Reference Value = 74.91 V/m; Power Drift = -0.04 dB

Peak SAR (extrapolated) = 17.0 W/kg

SAR(1 g) = 9.31 W/kg; SAR(10 g) = 4.82 W/kg

Maximum value of SAR (measured) = 13.4 W/kg



0 dB = 13.4 W/kg = 11.27 dBW/kg

Test Laboratory: SGS-SAR Lab

System Performance Check 1900MHz Head**DUT: D1900V2; Type: Dipole; Serial: 5d028**

Communication System: UID 0, CW (0); Frequency: 1900 MHz; Duty Cycle: 1:1

Medium: HSL1900; Medium parameters used: $f = 1900$ MHz; $\sigma = 1.372$ S/m; $\epsilon_r = 40.229$; $\rho = 1000$ kg/m³

Phantom section: Flat Section

DASY 5 Configuration:

- Probe: EX3DV4 - SN3789; ConvF(7.3, 7.3, 7.3); Calibrated: 2022/9/30
- Sensor-Surface: 1.4mm (Mechanical Surface Detection)
- Electronics: DAE4 Sn702; Calibrated: 2022/11/9
- Phantom: SAM 4; Type: SAM; Serial: 1913
- DASY52 52.10.4(1527); SEMCAD X 14.6.14(7483)

Configuration/d=10mm, Pin=250mW/Area Scan (8x10x1): Measurement grid: dx=15mm, dy=15mm

Maximum value of SAR (measured) = 12.1 W/kg

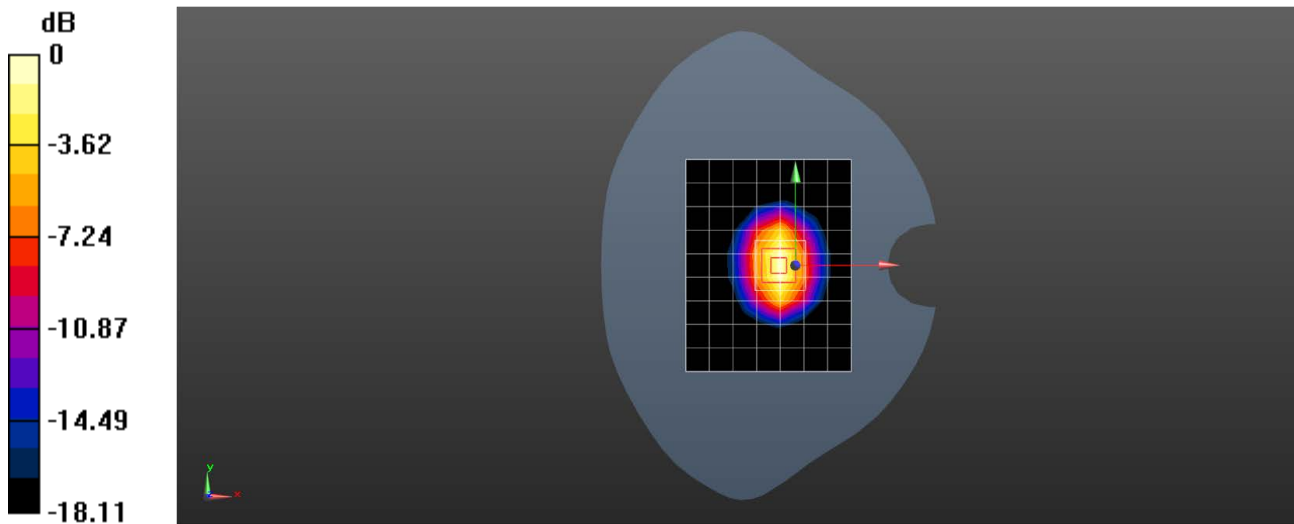
Configuration/d=10mm, Pin=250mW/Zoom Scan (5x5x7)/Cube 0: Measurement grid: dx=8mm, dy=8mm, dz=5mm

Reference Value = 76.95 V/m; Power Drift = -0.09 dB

Peak SAR (extrapolated) = 17.0 W/kg

SAR(1 g) = 9.33 W/kg; SAR(10 g) = 4.83 W/kg

Maximum value of SAR (measured) = 13.4 W/kg



0 dB = 13.4 W/kg = 11.27 dBW/kg

Test Laboratory: SGS-SAR Lab

System Performance Check 2450MHz Head

DUT: D2450V2; Type: Dipole; Serial: 733

Communication System: UID 0, CW; Frequency: 2450 MHz; Duty Cycle: 1:1

Medium: HSL2450; Medium parameters used: $f = 2450$ MHz; $\sigma = 1.792$ S/m; $\epsilon_r = 40.333$; $\rho = 1000$ kg/m³

Phantom section: Flat Section

DASY 5 Configuration:

- Probe: EX3DV4 - SN7620; ConvF(8.2, 8.2, 8.2); Calibrated: 2022/11/20
- Sensor-Surface: 1.4mm (Mechanical Surface Detection)
- Electronics: DAE4 Sn1267; Calibrated: 2022/12/10
- Phantom: SAM 2; Type: SAM Twin; Serial: 1640
- DASY52 52.10.4(1527); SEMCAD X 14.6.14(7483)

Configuration/d=10mm, Pin=250mW/Area Scan (7x9x1): Measurement grid: dx=12mm, dy=12mm

Maximum value of SAR (measured) = 17.1 W/kg

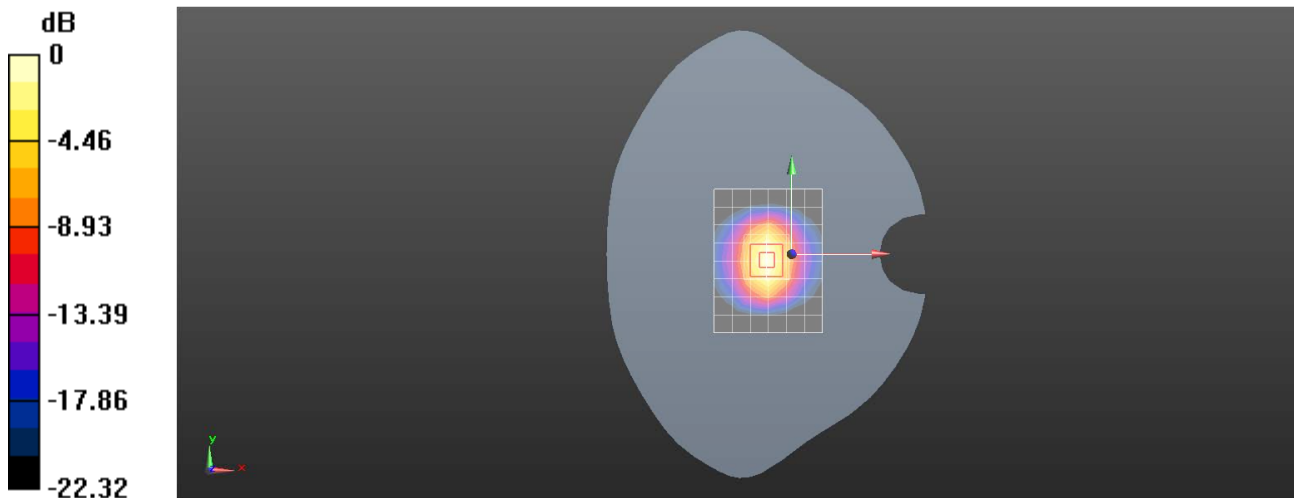
Configuration/d=10mm, Pin=250mW/Zoom Scan (7x7x7)/Cube 0: Measurement grid: dx=5mm, dy=5mm, dz=5mm

Reference Value = 89.14 V/m; Power Drift = -0.08 dB

Peak SAR (extrapolated) = 27.3 W/kg

SAR(1 g) = 13 W/kg; SAR(10 g) = 5.99 W/kg

Maximum value of SAR (measured) = 17.0 W/kg



0 dB = 17.0 W/kg = 12.30 dBW/kg

Test Laboratory: SGS-SAR Lab

System Performance Check 2600MHz Head**DUT: D2600V2; Type: Dipole; Serial: 1125**

Communication System: UID 0, CW (0); Frequency: 2600 MHz; Duty Cycle: 1:1

Medium: HSL2600; Medium parameters used: $f = 2600$ MHz; $\sigma = 1.958$ S/m; $\epsilon_r = 39.754$; $\rho = 1000$ kg/m³

Phantom section: Flat Section

DASY 5 Configuration:

- Probe: EX3DV4 - SN7620; ConvF(8, 8, 8); Calibrated: 2022/11/20
- Sensor-Surface: 1.4mm (Mechanical Surface Detection)
- Electronics: DAE4 Sn1267; Calibrated: 2022/12/10
- Phantom: SAM 2; Type: SAM Twin; Serial: 1640
- DASY52 52.10.4(1527); SEMCAD X 14.6.14(7483)

Configuration/d=10mm, Pin=250mW/Area Scan (7x9x1): Measurement grid: dx=12mm, dy=12mm

Maximum value of SAR (measured) = 16.7 W/kg

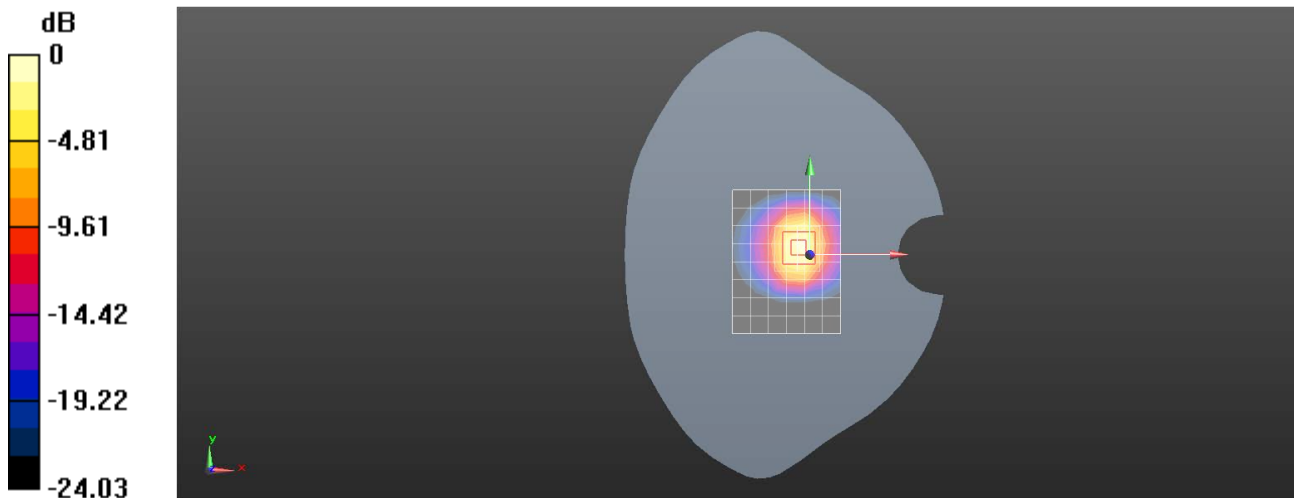
Configuration/d=10mm, Pin=250mW/Zoom Scan (7x7x7)/Cube 0: Measurement grid: dx=5mm, dy=5mm, dz=5mm

Reference Value = 65.20 V/m; Power Drift = -0.01 dB

Peak SAR (extrapolated) = 32.3 W/kg

SAR(1 g) = 14.8 W/kg; SAR(10 g) = 6.49 W/kg

Maximum value of SAR (measured) = 19.8 W/kg



0 dB = 19.8 W/kg = 12.97 dBW/kg

Test Laboratory: SGS-SAR Lab

System Performance Check 2600MHz Head**DUT: D2600V2; Type: Dipole; Serial: 1125**

Communication System: UID 0, CW (0); Frequency: 2600 MHz; Duty Cycle: 1:1

Medium: HSL2600; Medium parameters used: $f = 2600$ MHz; $\sigma = 1.945$ S/m; $\epsilon_r = 40.17$; $\rho = 1000$ kg/m³

Phantom section: Flat Section

DASY 5 Configuration:

- Probe: EX3DV4 - SN7620; ConvF(8, 8, 8); Calibrated: 2022/11/20
- Sensor-Surface: 1.4mm (Mechanical Surface Detection)
- Electronics: DAE4 Sn1267; Calibrated: 2022/12/10
- Phantom: SAM 2; Type: SAM Twin; Serial: 1640
- DASY52 52.10.4(1527); SEMCAD X 14.6.14(7483)

Configuration/d=10mm, Pin=250mW/Area Scan (7x9x1): Measurement grid: dx=12mm, dy=12mm

Maximum value of SAR (measured) = 18.6 W/kg

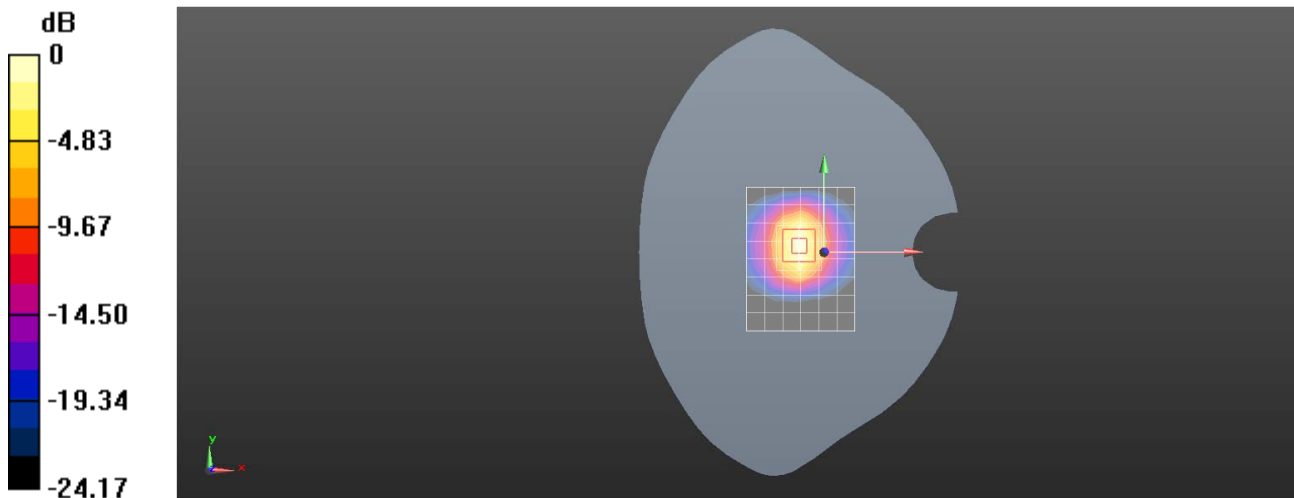
Configuration/d=10mm, Pin=250mW/Zoom Scan (7x7x7)/Cube 0: Measurement grid: dx=5mm, dy=5mm, dz=5mm

Reference Value = 90.96 V/m; Power Drift = -0.06 dB

Peak SAR (extrapolated) = 32.1 W/kg

SAR(1 g) = 14.6 W/kg; SAR(10 g) = 6.45 W/kg

Maximum value of SAR (measured) = 19.6 W/kg



0 dB = 19.6 W/kg = 12.92 dBW/kg

Test Laboratory: SGS-SAR Lab

System Performance Check 5.25GHz Head**DUT: D5GHzV2; Type: Dipole; Serial: 1165**

Communication System: UID 0, CW (0); Frequency: 5250 MHz;Duty Cycle: 1:1

Medium: HSL5G;Medium parameters used: $f = 5250$ MHz; $\sigma = 4.66$ S/m; $\epsilon_r = 37.22$; $\rho = 1000$ kg/m³

Phantom section: Flat Section

DASY 5 Configuration:

- Probe: EX3DV4 - SN7735; ConvF(5.3, 5.3, 5.3); Calibrated: 2022/8/9
- Sensor-Surface: 1.4mm (Mechanical Surface Detection)
- Electronics: DAE4 Sn1663; Calibrated: 2023/3/27
- Phantom: SAM 3; Type: QD 000 P41 Ax; Serial: 2031
- DASY52 52.10.4(1527); SEMCAD X 14.6.14(7483)

Configuration/d=10mm, Pin=100mW, f=5250 MHz/Area Scan (8x11x1): Measurement grid: dx=10mm, dy=10mm

Maximum value of SAR (measured) = 14.4 W/kg

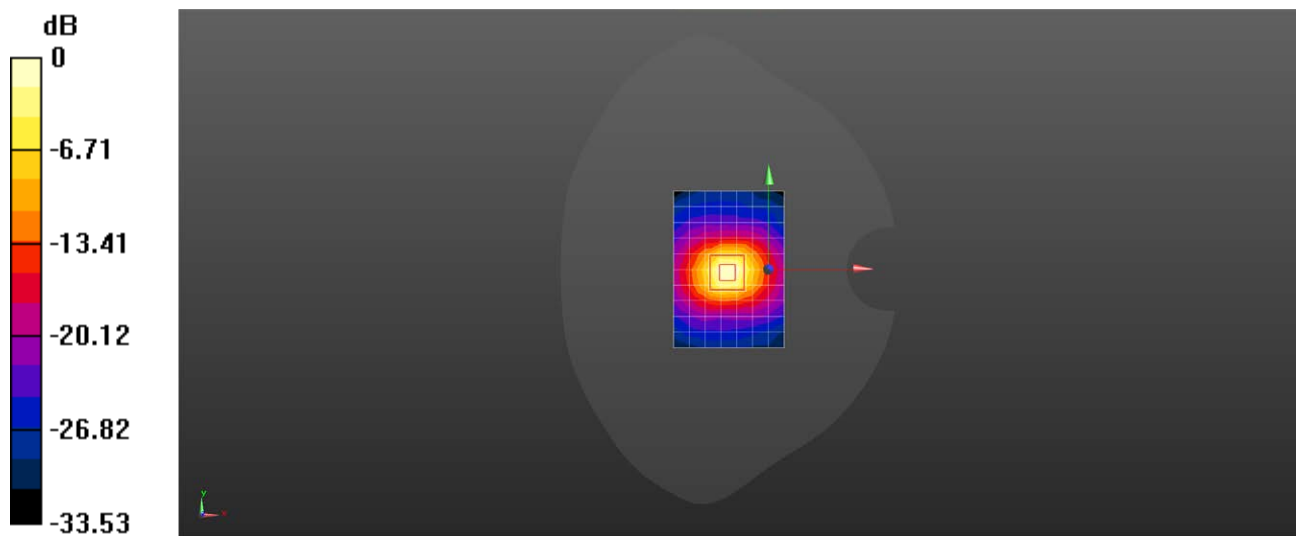
Configuration/d=10mm, Pin=100mW, f=5250 MHz/Zoom Scan (7x7x7)/Cube 0: Measurement grid: dx=4mm, dy=4mm, dz=1.4mm

Reference Value = 68.51 V/m; Power Drift = -0.03 dB

Peak SAR (extrapolated) = 29.6 W/kg

SAR(1 g) = 8.02 W/kg; SAR(10 g) = 2.36 W/kg

Maximum value of SAR (measured) = 19.6 W/kg



0 dB = 14.4 W/kg = 11.59 dBW/kg

Test Laboratory: SGS-SAR Lab

System Performance Check 5.6GHz Head**DUT: D5GHzV2; Type: Dipole; Serial: 1165**

Communication System: UID 0, CW (0); Frequency: 5600 MHz;Duty Cycle: 1:1

Medium: HSL5G;Medium parameters used: $f = 5600$ MHz; $\sigma = 4.994$ S/m; $\epsilon_r = 36.798$; $\rho = 1000$ kg/m³

Phantom section: Flat Section

DASY 5 Configuration:

- Probe: EX3DV4 - SN7735; ConvF(4.75, 4.75, 4.75); Calibrated: 2022/8/9
- Sensor-Surface: 1.4mm (Mechanical Surface Detection)
- Electronics: DAE4 Sn1663; Calibrated: 2023/3/27
- Phantom: SAM 3; Type: QD 000 P41 Ax; Serial: 2031
- DASY52 52.10.4(1527); SEMCAD X 14.6.14(7483)

Configuration/d=10mm, Pin=100mW, f=5600 MHz/Area Scan (8x11x1): Measurement grid: dx=10mm, dy=10mm

Maximum value of SAR (measured) = 15.8 W/kg

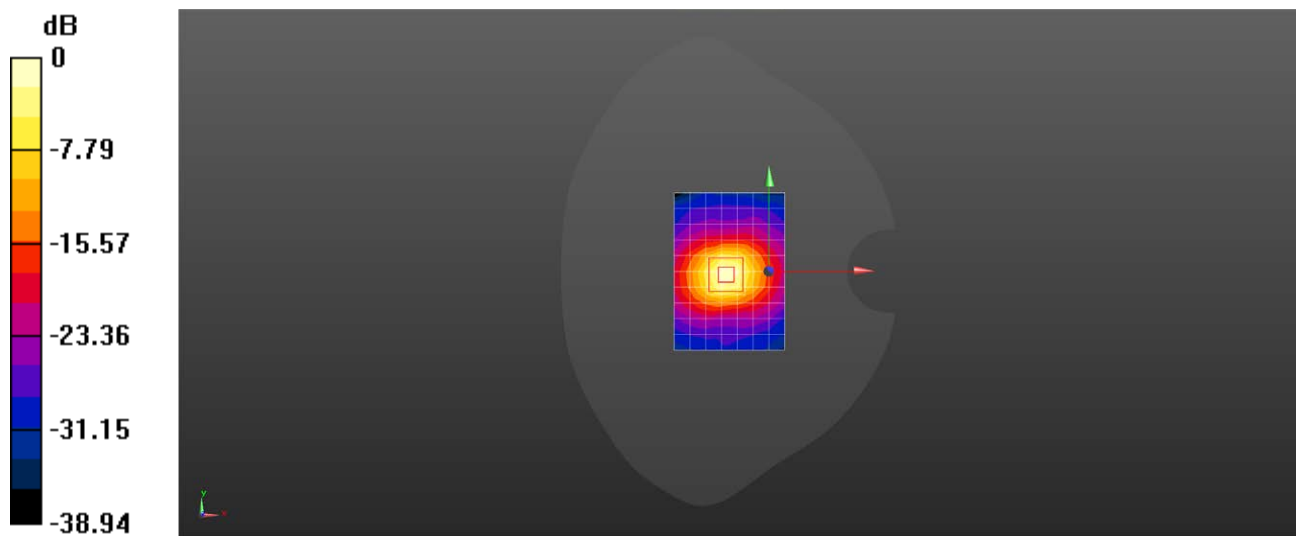
Configuration/d=10mm, Pin=100mW, f=5600 MHz/Zoom Scan (7x7x7)/Cube 0: Measurement grid: dx=4mm, dy=4mm, dz=1.4mm

Reference Value = 65.41 V/m; Power Drift = -0.17 dB

Peak SAR (extrapolated) = 30.5 W/kg

SAR(1 g) = 7.85 W/kg; SAR(10 g) = 2.27 W/kg

Maximum value of SAR (measured) = 19.7 W/kg



0 dB = 15.8 W/kg = 11.98 dBW/kg

Test Laboratory: SGS-SAR Lab

System Performance Check 5.75GHz Head**DUT: D5GHzV2; Type: Dipole; Serial: 1165**

Communication System: UID 0, CW (0); Frequency: 5750 MHz;Duty Cycle: 1:1

Medium: HSL5G;Medium parameters used: $f = 5750$ MHz; $\sigma = 5.263$ S/m; $\epsilon_r = 36.449$; $\rho = 1000$ kg/m³

Phantom section: Flat Section

DASY 5 Configuration:

- Probe: EX3DV4 - SN7735; ConvF(4.8, 4.8, 4.8); Calibrated: 2022/8/9
- Sensor-Surface: 1.4mm (Mechanical Surface Detection)
- Electronics: DAE4 Sn1663; Calibrated: 2023/3/27
- Phantom: SAM 3; Type: QD 000 P41 Ax; Serial: 2031
- DASY52 52.10.4(1527); SEMCAD X 14.6.14(7483)

Configuration/d=10mm, Pin=100mW, f=5750 MHz/Area Scan (8x11x1): Measurement grid: dx=10mm, dy=10mm

Maximum value of SAR (measured) = 16.3 W/kg

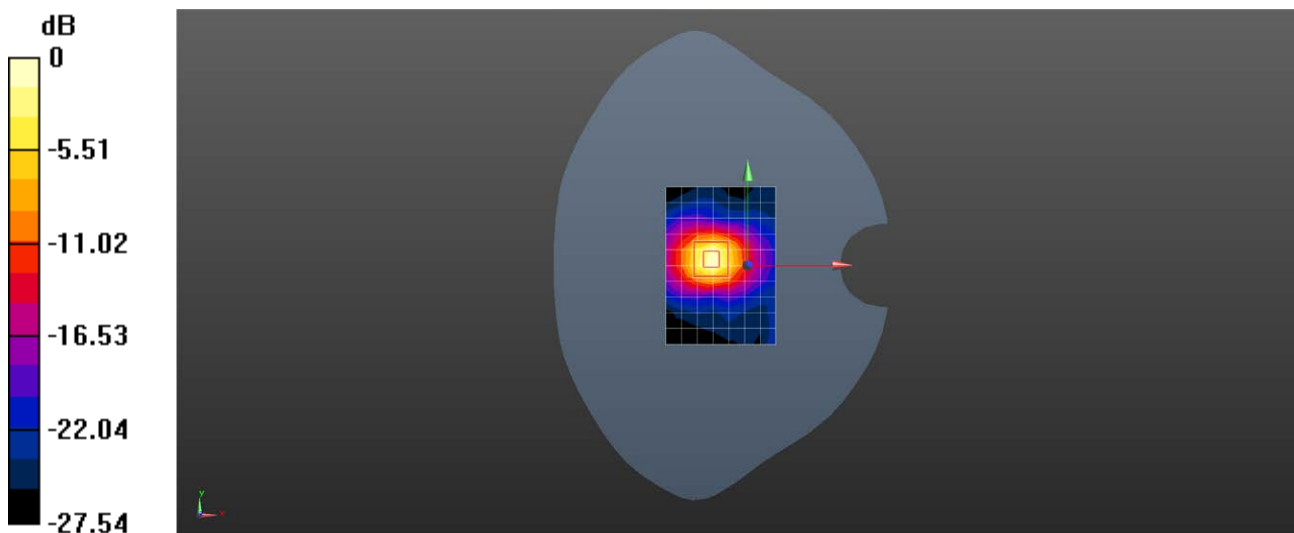
Configuration/d=10mm, Pin=100mW, f=5750 MHz/Zoom Scan (7x7x7)/Cube 0: Measurement grid: dx=4mm, dy=4mm, dz=1.4mm

Reference Value = 49.70 V/m; Power Drift = 0.05 dB

Peak SAR (extrapolated) = 32.4 W/kg

SAR(1 g) = 7.43 W/kg; SAR(10 g) = 2.15 W/kg

Maximum value of SAR (measured) = 19.6 W/kg



0 dB = 16.3 W/kg = 12.13 dBW/kg