

Report No.: SEWM2306000194RG02

Rev.: 01

Page: 1 of 159

# Appendix B.33

## NR Band n78(3700-3800)



Unless otherwise agreed in writing, this document is issued by the Company subject to its General Conditions of Service printed overleaf, available on request or accessible at <http://www.sgs.com/en/Terms-and-Conditions.aspx> and, for electronic format documents, subject to Terms and Conditions for Electronic Documents at <http://www.sgs.com/en/Terms-and-Conditions/Terms-e-Documents.aspx>. Attention is drawn to the limitation of liability, indemnification and jurisdiction issues defined therein. Any holder of this document is advised that information contained hereon reflects the Company's findings at the time of its intervention only and within the limits of Client's instructions, if any. The Company's sole responsibility is to its Client and this document does not exonerate parties to a transaction from exercising all their rights and obligations under the transaction documents. This document cannot be reproduced except in full, without prior written approval of the Company. Any unauthorized alteration, forgery or falsification of the content or appearance of this document is unlawful and offenders may be prosecuted to the fullest extent of the law. Unless otherwise stated the results shown in this test report refer only to the sample(s) tested and such sample(s) are retained for 30 days only.  
**Attention: To check the authenticity of testing/inspection report & certificate, please contact us at telephone: (86-755) 8307 1443, or email: CN.Doccheck@sgs.com**

South of No. 6 Plant, No. 1, Runsheng Road, Suzhou Industrial Park, Suzhou Area, China (Jiangsu) Pilot Free Trade Zone 215000  
中国·苏州·中国(江苏)自由贸易试验区苏州片区苏州工业园区润胜路1号的6号厂房南楼 邮编: 215000

t (86-512) 62992980 www.sgs.com.cn  
t (86-512) 62992980 sgs.china@sgs.com

## Effective (Isotropic) Radiated Power Output Data for SA

### Test Result

#### Ant21:

Band	SCS	Band width	Modulation	Chan nel	RB Config	Power (dBm)	EIRP (dBm)	Limit	Verdict
N78-3700-3800	30	10	DFT-PI2BPSK	L	Inner_1RB_Left	24.26	26.26	30	PASS
N78-3700-3800	30	10	DFT-PI2BPSK	L	Inner_1RB_Right	24.02	26.02	30	PASS
N78-3700-3800	30	10	DFT-PI2BPSK	L	Outer_Full	22.58	24.58	30	PASS
N78-3700-3800	30	10	DFT-QPSK	L	Inner_1RB_Left	24.12	26.12	30	PASS
N78-3700-3800	30	10	DFT-QPSK	L	Inner_1RB_Right	23.50	25.50	30	PASS
N78-3700-3800	30	10	DFT-QPSK	L	Outer_Full	22.13	24.13	30	PASS
N78-3700-3800	30	10	DFT-16QAM	L	Inner_1RB_Left	22.66	24.66	30	PASS
N78-3700-3800	30	10	DFT-16QAM	L	Inner_1RB_Right	22.94	24.94	30	PASS
N78-3700-3800	30	10	DFT-16QAM	L	Outer_Full	20.92	22.92	30	PASS
N78-3700-3800	30	10	DFT-64QAM	L	Inner_1RB_Left	20.79	22.79	30	PASS
N78-3700-3800	30	10	DFT-64QAM	L	Inner_1RB_Right	21.18	23.18	30	PASS
N78-3700-3800	30	10	DFT-64QAM	L	Outer_Full	20.58	22.58	30	PASS
N78-3700-3800	30	10	DFT-256QAM	L	Inner_1RB_Left	18.49	20.49	30	PASS
N78-3700-3800	30	10	DFT-256QAM	L	Inner_1RB_Right	18.40	20.40	30	PASS
N78-3700-3800	30	10	DFT-256QAM	L	Outer_Full	18.01	20.01	30	PASS
N78-3700-3800	30	10	DFT-PI2BPSK	M	Inner_1RB_Left	23.35	25.35	30	PASS
N78-3700-3800	30	10	DFT-PI2BPSK	M	Inner_1RB_Right	23.07	25.07	30	PASS
N78-3700-3800	30	10	DFT-PI2BPSK	M	Outer_Full	21.99	23.99	30	PASS
N78-3700-3800	30	10	DFT-QPSK	M	Inner_1RB_Left	23.44	25.44	30	PASS
N78-3700-3800	30	10	DFT-QPSK	M	Inner_1RB_Right	23.65	25.65	30	PASS
N78-3700-3800	30	10	DFT-QPSK	M	Outer_Full	21.48	23.48	30	PASS
N78-3700-3800	30	10	DFT-16QAM	M	Inner_1RB_Left	22.66	24.66	30	PASS
N78-3700-3800	30	10	DFT-16QAM	M	Inner_1RB_Right	22.26	24.26	30	PASS
N78-3700-3800	30	10	DFT-16QAM	M	Outer_Full	21.04	23.04	30	PASS
N78-3700-3800	30	10	DFT-64QAM	M	Inner_1RB_Left	20.50	22.50	30	PASS
N78-3700-3800	30	10	DFT-64QAM	M	Inner_1RB_Right	20.55	22.55	30	PASS
N78-3700-3800	30	10	DFT-64QAM	M	Outer_Full	20.18	22.18	30	PASS
N78-3700-3800	30	10	DFT-256QAM	M	Inner_1RB_Left	18.11	20.11	30	PASS
N78-3700-3800	30	10	DFT-256QAM	M	Inner_1RB_Right	17.68	19.68	30	PASS
N78-3700-3800	30	10	DFT-256QAM	M	Outer_Full	17.87	19.87	30	PASS



Unless otherwise agreed in writing, this document is issued by the Company subject to its General Conditions of Service printed overleaf, available on request or accessible at <http://www.sgs.com/en/Terms-and-Conditions.aspx> and, for electronic format documents, subject to Terms and Conditions for Electronic Documents at <http://www.sgs.com/en/Terms-and-Conditions/Terms-e-Documents.aspx>. Attention is drawn to the limitation of liability, indemnification and jurisdiction issues defined therein. Any holder of this document is advised that information contained hereon reflects the Company's findings at the time of its intervention only and within the limits of Client's instructions, if any. The Company's sole responsibility is to its Client and this document does not exonerate parties to a transaction from exercising all their rights and obligations under the transaction documents. This document cannot be reproduced except in full, without prior written approval of the Company. Any unauthorized alteration, forgery or falsification of the content or appearance of this document is unlawful and offenders may be prosecuted to the fullest extent of the law. Unless otherwise stated the results shown in this test report refer only to the sample(s) tested and such sample(s) are retained for 30 days only.

Attention: To check the authenticity of testing/inspection report & certificate, please contact us at telephone: (86-755) 83071443, or email: [CN.Doccheck@sgs.com](mailto:CN.Doccheck@sgs.com)

South of No. 6 Plant, No. 1, Ransheng Road, Suzhou Industrial Park, Suzhou Area, China (Jiangsu) Pilot Free Trade Zone 215000 t (86-512) 62992980 www.sgs.com.cn  
 中国·苏州·中国(江苏)自由贸易试验区苏州片区苏州工业园区润胜路1号的6号厂房南楼 邮编: 215000 t (86-512) 62992980 sgs.china@sgs.com



Report No.: SEWM2306000194RG02

Rev.: 01

Page: 3 of 159

N78-3700-3800	30	10	DFT-PI2BPSK	H	Inner_1RB_Left	23.10	25.10	30	PASS
N78-3700-3800	30	10	DFT-PI2BPSK	H	Inner_1RB_Right	23.39	25.39	30	PASS
N78-3700-3800	30	10	DFT-PI2BPSK	H	Outer_Full	21.05	23.05	30	PASS
N78-3700-3800	30	10	DFT-QPSK	H	Inner_1RB_Left	23.33	25.33	30	PASS
N78-3700-3800	30	10	DFT-QPSK	H	Inner_1RB_Right	23.03	25.03	30	PASS
N78-3700-3800	30	10	DFT-QPSK	H	Outer_Full	20.94	22.94	30	PASS
N78-3700-3800	30	10	DFT-16QAM	H	Inner_1RB_Left	22.09	24.09	30	PASS
N78-3700-3800	30	10	DFT-16QAM	H	Inner_1RB_Right	21.50	23.50	30	PASS
N78-3700-3800	30	10	DFT-16QAM	H	Outer_Full	20.16	22.16	30	PASS
N78-3700-3800	30	10	DFT-64QAM	H	Inner_1RB_Left	19.94	21.94	30	PASS
N78-3700-3800	30	10	DFT-64QAM	H	Inner_1RB_Right	20.08	22.08	30	PASS
N78-3700-3800	30	10	DFT-64QAM	H	Outer_Full	19.55	21.55	30	PASS
N78-3700-3800	30	10	DFT-256QAM	H	Inner_1RB_Left	17.81	19.81	30	PASS
N78-3700-3800	30	10	DFT-256QAM	H	Inner_1RB_Right	17.01	19.01	30	PASS
N78-3700-3800	30	10	DFT-256QAM	H	Outer_Full	17.48	19.48	30	PASS
N78-3700-3800	30	15	DFT-PI2BPSK	L	Inner_1RB_Left	24.09	26.09	30	PASS
N78-3700-3800	30	15	DFT-PI2BPSK	L	Inner_1RB_Right	24.06	26.06	30	PASS
N78-3700-3800	30	15	DFT-PI2BPSK	L	Outer_Full	22.21	24.21	30	PASS
N78-3700-3800	30	15	DFT-QPSK	L	Inner_1RB_Left	24.27	26.27	30	PASS
N78-3700-3800	30	15	DFT-QPSK	L	Inner_1RB_Right	23.77	25.77	30	PASS
N78-3700-3800	30	15	DFT-QPSK	L	Outer_Full	21.87	23.87	30	PASS
N78-3700-3800	30	15	DFT-16QAM	L	Inner_1RB_Left	23.14	25.14	30	PASS
N78-3700-3800	30	15	DFT-16QAM	L	Inner_1RB_Right	22.73	24.73	30	PASS
N78-3700-3800	30	15	DFT-16QAM	L	Outer_Full	20.98	22.98	30	PASS
N78-3700-3800	30	15	DFT-64QAM	L	Inner_1RB_Left	21.19	23.19	30	PASS
N78-3700-3800	30	15	DFT-64QAM	L	Inner_1RB_Right	21.12	23.12	30	PASS
N78-3700-3800	30	15	DFT-64QAM	L	Outer_Full	20.43	22.43	30	PASS
N78-3700-3800	30	15	DFT-256QAM	L	Inner_1RB_Left	18.51	20.51	30	PASS
N78-3700-3800	30	15	DFT-256QAM	L	Inner_1RB_Right	17.81	19.81	30	PASS
N78-3700-3800	30	15	DFT-256QAM	L	Outer_Full	18.63	20.63	30	PASS
N78-3700-3800	30	15	DFT-PI2BPSK	M	Inner_1RB_Left	24.05	26.05	30	PASS
N78-3700-3800	30	15	DFT-PI2BPSK	M	Inner_1RB_Right	23.33	25.33	30	PASS
N78-3700-3800	30	15	DFT-PI2BPSK	M	Outer_Full	22.08	24.08	30	PASS
N78-3700-3800	30	15	DFT-QPSK	M	Inner_1RB_Left	23.91	25.91	30	PASS
N78-3700-3800	30	15	DFT-QPSK	M	Inner_1RB_Right	23.38	25.38	30	PASS
N78-3700-3800	30	15	DFT-QPSK	M	Outer_Full	22.02	24.02	30	PASS
N78-3700-3800	30	15	DFT-16QAM	M	Inner_1RB_Left	23.01	25.01	30	PASS
N78-3700-3800	30	15	DFT-16QAM	M	Inner_1RB_Right	22.68	24.68	30	PASS



Unless otherwise agreed in writing, this document is issued by the Company subject to its General Conditions of Service printed overleaf, available on request or accessible at <http://www.sgs.com/en/Terms-and-Conditions.aspx> and, for electronic format documents, subject to Terms and Conditions for Electronic Documents at <http://www.sgs.com/en/Terms-and-Conditions/Terms-e-Documents.aspx>. Attention is drawn to the limitation of liability, indemnification and jurisdiction issues defined therein. Any holder of this document is advised that information contained hereon reflects the Company's findings at the time of its intervention only and within the limits of Client's instructions, if any. The Company's sole responsibility is to its Client and this document does not exonerate parties to a transaction from exercising all their rights and obligations under the transaction documents. This document cannot be reproduced except in full, without prior written approval of the Company. Any unauthorized alteration, forgery or falsification of the content or appearance of this document is unlawful and offenders may be prosecuted to the fullest extent of the law. Unless otherwise stated the results shown in this test report refer only to the sample(s) tested and such sample(s) are retained for 30 days only.

Attention: To check the authenticity of testing/inspection report & certificate, please contact us at telephone: (86-755) 83071443, or email: [CN.Doccheck@sgs.com](mailto:CN.Doccheck@sgs.com)

South of No. 6 Plant, No. 1, Runsheng Road, Suzhou Industrial Park, Suzhou Area, China (Jiangsu) Pilot Free Trade Zone 215000 t (86-512) 62992980 www.sgs.com.cn  
 中国·苏州·中国(江苏)自由贸易试验区苏州片区苏州工业园区润胜路1号的6号厂房南楼 邮编: 215000 t (86-512) 62992980 sgs.china@sgs.com



Report No.: SEWM2306000194RG02

Rev.: 01

Page: 4 of 159

N78-3700-3800	30	15	DFT-16QAM	M	Outer_Full	20.81	22.81	30	PASS
N78-3700-3800	30	15	DFT-64QAM	M	Inner_1RB_Left	20.34	22.34	30	PASS
N78-3700-3800	30	15	DFT-64QAM	M	Inner_1RB_Right	20.93	22.93	30	PASS
N78-3700-3800	30	15	DFT-64QAM	M	Outer_Full	20.24	22.24	30	PASS
N78-3700-3800	30	15	DFT-256QAM	M	Inner_1RB_Left	18.01	20.01	30	PASS
N78-3700-3800	30	15	DFT-256QAM	M	Inner_1RB_Right	17.98	19.98	30	PASS
N78-3700-3800	30	15	DFT-256QAM	M	Outer_Full	18.37	20.37	30	PASS
N78-3700-3800	30	15	DFT-PI2BPSK	H	Inner_1RB_Left	23.62	25.62	30	PASS
N78-3700-3800	30	15	DFT-PI2BPSK	H	Inner_1RB_Right	22.91	24.91	30	PASS
N78-3700-3800	30	15	DFT-PI2BPSK	H	Outer_Full	22.20	24.20	30	PASS
N78-3700-3800	30	15	DFT-QPSK	H	Inner_1RB_Left	23.25	25.25	30	PASS
N78-3700-3800	30	15	DFT-QPSK	H	Inner_1RB_Right	23.30	25.30	30	PASS
N78-3700-3800	30	15	DFT-QPSK	H	Outer_Full	21.38	23.38	30	PASS
N78-3700-3800	30	15	DFT-16QAM	H	Inner_1RB_Left	22.50	24.50	30	PASS
N78-3700-3800	30	15	DFT-16QAM	H	Inner_1RB_Right	22.04	24.04	30	PASS
N78-3700-3800	30	15	DFT-16QAM	H	Outer_Full	20.48	22.48	30	PASS
N78-3700-3800	30	15	DFT-64QAM	H	Inner_1RB_Left	20.08	22.08	30	PASS
N78-3700-3800	30	15	DFT-64QAM	H	Inner_1RB_Right	19.86	21.86	30	PASS
N78-3700-3800	30	15	DFT-64QAM	H	Outer_Full	19.79	21.79	30	PASS
N78-3700-3800	30	15	DFT-256QAM	H	Inner_1RB_Left	17.89	19.89	30	PASS
N78-3700-3800	30	15	DFT-256QAM	H	Inner_1RB_Right	17.58	19.58	30	PASS
N78-3700-3800	30	15	DFT-256QAM	H	Outer_Full	17.43	19.43	30	PASS
N78-3700-3800	30	20	DFT-PI2BPSK	L	Inner_1RB_Left	23.99	25.99	30	PASS
N78-3700-3800	30	20	DFT-PI2BPSK	L	Inner_1RB_Right	23.31	25.31	30	PASS
N78-3700-3800	30	20	DFT-PI2BPSK	L	Outer_Full	22.64	24.64	30	PASS
N78-3700-3800	30	20	DFT-QPSK	L	Inner_1RB_Left	24.24	26.24	30	PASS
N78-3700-3800	30	20	DFT-QPSK	L	Inner_1RB_Right	23.53	25.53	30	PASS
N78-3700-3800	30	20	DFT-QPSK	L	Outer_Full	22.58	24.58	30	PASS
N78-3700-3800	30	20	DFT-16QAM	L	Inner_1RB_Left	21.65	23.65	30	PASS
N78-3700-3800	30	20	DFT-16QAM	L	Inner_1RB_Right	21.46	23.46	30	PASS
N78-3700-3800	30	20	DFT-16QAM	L	Outer_Full	21.61	23.61	30	PASS
N78-3700-3800	30	20	DFT-64QAM	L	Inner_1RB_Left	20.08	22.08	30	PASS
N78-3700-3800	30	20	DFT-64QAM	L	Inner_1RB_Right	20.88	22.88	30	PASS
N78-3700-3800	30	20	DFT-64QAM	L	Outer_Full	20.51	22.51	30	PASS
N78-3700-3800	30	20	DFT-256QAM	L	Inner_1RB_Left	18.72	20.72	30	PASS
N78-3700-3800	30	20	DFT-256QAM	L	Inner_1RB_Right	18.02	20.02	30	PASS
N78-3700-3800	30	20	DFT-256QAM	L	Outer_Full	18.17	20.17	30	PASS
N78-3700-3800	30	20	DFT-PI2BPSK	M	Inner_1RB_Left	23.78	25.78	30	PASS



Unless otherwise agreed in writing, this document is issued by the Company subject to its General Conditions of Service printed overleaf, available on request or accessible at <http://www.sgs.com/en/Terms-and-Conditions.aspx> and, for electronic format documents, subject to Terms and Conditions for Electronic Documents at <http://www.sgs.com/en/Terms-and-Conditions/Terms-e-Documents.aspx>. Attention is drawn to the limitation of liability, indemnification and jurisdiction issues defined therein. Any holder of this document is advised that information contained hereon reflects the Company's findings at the time of its intervention only and within the limits of Client's instructions, if any. The Company's sole responsibility is to its Client and this document does not exonerate parties to a transaction from exercising all their rights and obligations under the transaction documents. This document cannot be reproduced except in full, without prior written approval of the Company. Any unauthorized alteration, forgery or falsification of the content or appearance of this document is unlawful and offenders may be prosecuted to the fullest extent of the law. Unless otherwise stated the results shown in this test report refer only to the sample(s) tested and such sample(s) are retained for 30 days only.

Attention: To check the authenticity of testing/inspection report & certificate, please contact us at telephone: (86-755) 8307 1443, or email: [CN.Doccheck@sgs.com](mailto:CN.Doccheck@sgs.com)

South of No. 6 Plant, No. 1, Runsheng Road, Suzhou Industrial Park, Suzhou Area, China (Jiangsu) Pilot Free Trade Zone 215000 t (86-512) 62992980 www.sgs.com.cn  
 中国·苏州·中国(江苏)自由贸易试验区苏州片区苏州工业园区润胜路1号的6号厂房南楼 邮编: 215000 t (86-512) 62992980 sgs.china@sgs.com



Report No.: SEWM2306000194RG02

Rev.: 01

Page: 5 of 159

N78-3700-3800	30	20	DFT-PI2BPSK	M	Inner_1RB_Right	23.29	25.29	30	PASS
N78-3700-3800	30	20	DFT-PI2BPSK	M	Outer_Full	22.23	24.23	30	PASS
N78-3700-3800	30	20	DFT-QPSK	M	Inner_1RB_Left	23.12	25.12	30	PASS
N78-3700-3800	30	20	DFT-QPSK	M	Inner_1RB_Right	23.47	25.47	30	PASS
N78-3700-3800	30	20	DFT-QPSK	M	Outer_Full	21.56	23.56	30	PASS
N78-3700-3800	30	20	DFT-16QAM	M	Inner_1RB_Left	22.70	24.70	30	PASS
N78-3700-3800	30	20	DFT-16QAM	M	Inner_1RB_Right	22.34	24.34	30	PASS
N78-3700-3800	30	20	DFT-16QAM	M	Outer_Full	20.47	22.47	30	PASS
N78-3700-3800	30	20	DFT-64QAM	M	Inner_1RB_Left	20.94	22.94	30	PASS
N78-3700-3800	30	20	DFT-64QAM	M	Inner_1RB_Right	20.45	22.45	30	PASS
N78-3700-3800	30	20	DFT-64QAM	M	Outer_Full	19.62	21.62	30	PASS
N78-3700-3800	30	20	DFT-256QAM	M	Inner_1RB_Left	18.06	20.06	30	PASS
N78-3700-3800	30	20	DFT-256QAM	M	Inner_1RB_Right	18.23	20.23	30	PASS
N78-3700-3800	30	20	DFT-256QAM	M	Outer_Full	18.12	20.12	30	PASS
N78-3700-3800	30	20	DFT-PI2BPSK	H	Inner_1RB_Left	23.01	25.01	30	PASS
N78-3700-3800	30	20	DFT-PI2BPSK	H	Inner_1RB_Right	23.44	25.44	30	PASS
N78-3700-3800	30	20	DFT-PI2BPSK	H	Outer_Full	21.83	23.83	30	PASS
N78-3700-3800	30	20	DFT-QPSK	H	Inner_1RB_Left	23.80	25.80	30	PASS
N78-3700-3800	30	20	DFT-QPSK	H	Inner_1RB_Right	22.92	24.92	30	PASS
N78-3700-3800	30	20	DFT-QPSK	H	Outer_Full	21.25	23.25	30	PASS
N78-3700-3800	30	20	DFT-16QAM	H	Inner_1RB_Left	22.79	24.79	30	PASS
N78-3700-3800	30	20	DFT-16QAM	H	Inner_1RB_Right	21.94	23.94	30	PASS
N78-3700-3800	30	20	DFT-16QAM	H	Outer_Full	20.29	22.29	30	PASS
N78-3700-3800	30	20	DFT-64QAM	H	Inner_1RB_Left	20.69	22.69	30	PASS
N78-3700-3800	30	20	DFT-64QAM	H	Inner_1RB_Right	20.16	22.16	30	PASS
N78-3700-3800	30	20	DFT-64QAM	H	Outer_Full	19.36	21.36	30	PASS
N78-3700-3800	30	20	DFT-256QAM	H	Inner_1RB_Left	17.99	19.99	30	PASS
N78-3700-3800	30	20	DFT-256QAM	H	Inner_1RB_Right	17.47	19.47	30	PASS
N78-3700-3800	30	20	DFT-256QAM	H	Outer_Full	17.05	19.05	30	PASS
N78-3700-3800	30	25	DFT-PI2BPSK	L	Inner_1RB_Left	23.93	25.93	30	PASS
N78-3700-3800	30	25	DFT-PI2BPSK	L	Inner_1RB_Right	23.87	25.87	30	PASS
N78-3700-3800	30	25	DFT-PI2BPSK	L	Outer_Full	22.32	24.32	30	PASS
N78-3700-3800	30	25	DFT-QPSK	L	Inner_1RB_Left	24.09	26.09	30	PASS
N78-3700-3800	30	25	DFT-QPSK	L	Inner_1RB_Right	23.52	25.52	30	PASS
N78-3700-3800	30	25	DFT-QPSK	L	Outer_Full	21.83	23.83	30	PASS
N78-3700-3800	30	25	DFT-16QAM	L	Inner_1RB_Left	22.65	24.65	30	PASS
N78-3700-3800	30	25	DFT-16QAM	L	Inner_1RB_Right	22.71	24.71	30	PASS
N78-3700-3800	30	25	DFT-16QAM	L	Outer_Full	20.79	22.79	30	PASS



Unless otherwise agreed in writing, this document is issued by the Company subject to its General Conditions of Service printed overleaf, available on request or accessible at <http://www.sgs.com/en/Terms-and-Conditions.aspx> and, for electronic format documents, subject to Terms and Conditions for Electronic Documents at <http://www.sgs.com/en/Terms-and-Conditions/Terms-e-Documents.aspx>. Attention is drawn to the limitation of liability, indemnification and jurisdiction issues defined therein. Any holder of this document is advised that information contained hereon reflects the Company's findings at the time of its intervention only and within the limits of Client's instructions, if any. The Company's sole responsibility is to its Client and this document does not exonerate parties to a transaction from exercising all their rights and obligations under the transaction documents. This document cannot be reproduced except in full, without prior written approval of the Company. Any unauthorized alteration, forgery or falsification of the content or appearance of this document is unlawful and offenders may be prosecuted to the fullest extent of the law. Unless otherwise stated the results shown in this test report refer only to the sample(s) tested and such sample(s) are retained for 30 days only.

Attention: To check the authenticity of testing/inspection report & certificate, please contact us at telephone: (86-755) 83071443, or email: [CN.Doccheck@sgs.com](mailto:CN.Doccheck@sgs.com)

South of No. 6 Plant, No. 1, Runsheng Road, Suzhou Industrial Park, Suzhou Area, China (Jiangsu) Pilot Free Trade Zone 215000 t (86-512) 62992980 www.sgs.com.cn  
 中国·苏州·中国(江苏)自由贸易试验区苏州片区苏州工业园区润胜路1号的6号厂房南楼 邮编: 215000 t (86-512) 62992980 sgs.china@sgs.com



Report No.: SEWM2306000194RG02

Rev.: 01

Page: 6 of 159

N78-3700-3800	30	25	DFT-64QAM	L	Inner_1RB_Left	20.74	22.74	30	PASS
N78-3700-3800	30	25	DFT-64QAM	L	Inner_1RB_Right	20.44	22.44	30	PASS
N78-3700-3800	30	25	DFT-64QAM	L	Outer_Full	20.54	22.54	30	PASS
N78-3700-3800	30	25	DFT-256QAM	L	Inner_1RB_Left	18.63	20.63	30	PASS
N78-3700-3800	30	25	DFT-256QAM	L	Inner_1RB_Right	18.53	20.53	30	PASS
N78-3700-3800	30	25	DFT-256QAM	L	Outer_Full	18.47	20.47	30	PASS
N78-3700-3800	30	25	DFT-PI2BPSK	M	Inner_1RB_Left	23.90	25.90	30	PASS
N78-3700-3800	30	25	DFT-PI2BPSK	M	Inner_1RB_Right	23.59	25.59	30	PASS
N78-3700-3800	30	25	DFT-PI2BPSK	M	Outer_Full	22.13	24.13	30	PASS
N78-3700-3800	30	25	DFT-QPSK	M	Inner_1RB_Left	23.36	25.36	30	PASS
N78-3700-3800	30	25	DFT-QPSK	M	Inner_1RB_Right	23.79	25.79	30	PASS
N78-3700-3800	30	25	DFT-QPSK	M	Outer_Full	22.14	24.14	30	PASS
N78-3700-3800	30	25	DFT-16QAM	M	Inner_1RB_Left	22.16	24.16	30	PASS
N78-3700-3800	30	25	DFT-16QAM	M	Inner_1RB_Right	22.27	24.27	30	PASS
N78-3700-3800	30	25	DFT-16QAM	M	Outer_Full	20.46	22.46	30	PASS
N78-3700-3800	30	25	DFT-64QAM	M	Inner_1RB_Left	20.21	22.21	30	PASS
N78-3700-3800	30	25	DFT-64QAM	M	Inner_1RB_Right	20.45	22.45	30	PASS
N78-3700-3800	30	25	DFT-64QAM	M	Outer_Full	20.57	22.57	30	PASS
N78-3700-3800	30	25	DFT-256QAM	M	Inner_1RB_Left	18.49	20.49	30	PASS
N78-3700-3800	30	25	DFT-256QAM	M	Inner_1RB_Right	17.53	19.53	30	PASS
N78-3700-3800	30	25	DFT-256QAM	M	Outer_Full	18.50	20.50	30	PASS
N78-3700-3800	30	25	DFT-PI2BPSK	H	Inner_1RB_Left	22.94	24.94	30	PASS
N78-3700-3800	30	25	DFT-PI2BPSK	H	Inner_1RB_Right	22.98	24.98	30	PASS
N78-3700-3800	30	25	DFT-PI2BPSK	H	Outer_Full	21.20	23.20	30	PASS
N78-3700-3800	30	25	DFT-QPSK	H	Inner_1RB_Left	23.01	25.01	30	PASS
N78-3700-3800	30	25	DFT-QPSK	H	Inner_1RB_Right	22.76	24.76	30	PASS
N78-3700-3800	30	25	DFT-QPSK	H	Outer_Full	21.01	23.01	30	PASS
N78-3700-3800	30	25	DFT-16QAM	H	Inner_1RB_Left	22.45	24.45	30	PASS
N78-3700-3800	30	25	DFT-16QAM	H	Inner_1RB_Right	21.78	23.78	30	PASS
N78-3700-3800	30	25	DFT-16QAM	H	Outer_Full	20.27	22.27	30	PASS
N78-3700-3800	30	25	DFT-64QAM	H	Inner_1RB_Left	19.92	21.92	30	PASS
N78-3700-3800	30	25	DFT-64QAM	H	Inner_1RB_Right	19.35	21.35	30	PASS
N78-3700-3800	30	25	DFT-64QAM	H	Outer_Full	19.63	21.63	30	PASS
N78-3700-3800	30	25	DFT-256QAM	H	Inner_1RB_Left	17.27	19.27	30	PASS
N78-3700-3800	30	25	DFT-256QAM	H	Inner_1RB_Right	17.42	19.42	30	PASS
N78-3700-3800	30	25	DFT-256QAM	H	Outer_Full	17.40	19.40	30	PASS
N78-3700-3800	30	30	DFT-PI2BPSK	L	Inner_1RB_Left	23.96	25.96	30	PASS
N78-3700-3800	30	30	DFT-PI2BPSK	L	Inner_1RB_Right	23.54	25.54	30	PASS



Unless otherwise agreed in writing, this document is issued by the Company subject to its General Conditions of Service printed overleaf, available on request or accessible at <http://www.sgs.com/en/Terms-and-Conditions.aspx> and, for electronic format documents, subject to Terms and Conditions for Electronic Documents at <http://www.sgs.com/en/Terms-and-Conditions/Terms-e-Documents.aspx>. Attention is drawn to the limitation of liability, indemnification and jurisdiction issues defined therein. Any holder of this document is advised that information contained hereon reflects the Company's findings at the time of its intervention only and within the limits of Client's instructions, if any. The Company's sole responsibility is to its Client and this document does not exonerate parties to a transaction from exercising all their rights and obligations under the transaction documents. This document cannot be reproduced except in full, without prior written approval of the Company. Any unauthorized alteration, forgery or falsification of the content or appearance of this document is unlawful and offenders may be prosecuted to the fullest extent of the law. Unless otherwise stated the results shown in this test report refer only to the sample(s) tested and such sample(s) are retained for 30 days only.

Attention: To check the authenticity of testing/inspection report & certificate, please contact us at telephone: (86-755) 8307 1443, or email: [CN.Doccheck@sgs.com](mailto:CN.Doccheck@sgs.com)

South of No. 6 Plant, No. 1, Runsheng Road, Suzhou Industrial Park, Suzhou Area, China (Jiangsu) Pilot Free Trade Zone 215000 t (86-512) 62992980 www.sgs.com.cn  
 中国·苏州·中国(江苏)自由贸易试验区苏州片区苏州工业园区润胜路1号的6号厂房南楼 邮编: 215000 t (86-512) 62992980 sgs.china@sgs.com



Report No.: SEWM2306000194RG02

Rev.: 01

Page: 7 of 159

N78-3700-3800	30	30	DFT-PI2BPSK	L	Outer_Full	21.98	23.98	30	PASS
N78-3700-3800	30	30	DFT-QPSK	L	Inner_1RB_Left	23.71	25.71	30	PASS
N78-3700-3800	30	30	DFT-QPSK	L	Inner_1RB_Right	23.84	25.84	30	PASS
N78-3700-3800	30	30	DFT-QPSK	L	Outer_Full	21.73	23.73	30	PASS
N78-3700-3800	30	30	DFT-16QAM	L	Inner_1RB_Left	23.38	25.38	30	PASS
N78-3700-3800	30	30	DFT-16QAM	L	Inner_1RB_Right	22.67	24.67	30	PASS
N78-3700-3800	30	30	DFT-16QAM	L	Outer_Full	20.96	22.96	30	PASS
N78-3700-3800	30	30	DFT-64QAM	L	Inner_1RB_Left	21.16	23.16	30	PASS
N78-3700-3800	30	30	DFT-64QAM	L	Inner_1RB_Right	20.69	22.69	30	PASS
N78-3700-3800	30	30	DFT-64QAM	L	Outer_Full	20.59	22.59	30	PASS
N78-3700-3800	30	30	DFT-256QAM	L	Inner_1RB_Left	18.54	20.54	30	PASS
N78-3700-3800	30	30	DFT-256QAM	L	Inner_1RB_Right	18.39	20.39	30	PASS
N78-3700-3800	30	30	DFT-256QAM	L	Outer_Full	18.29	20.29	30	PASS
N78-3700-3800	30	30	DFT-PI2BPSK	M	Inner_1RB_Left	23.98	25.98	30	PASS
N78-3700-3800	30	30	DFT-PI2BPSK	M	Inner_1RB_Right	23.41	25.41	30	PASS
N78-3700-3800	30	30	DFT-PI2BPSK	M	Outer_Full	22.32	24.32	30	PASS
N78-3700-3800	30	30	DFT-QPSK	M	Inner_1RB_Left	23.64	25.64	30	PASS
N78-3700-3800	30	30	DFT-QPSK	M	Inner_1RB_Right	23.37	25.37	30	PASS
N78-3700-3800	30	30	DFT-QPSK	M	Outer_Full	21.63	23.63	30	PASS
N78-3700-3800	30	30	DFT-16QAM	M	Inner_1RB_Left	22.22	24.22	30	PASS
N78-3700-3800	30	30	DFT-16QAM	M	Inner_1RB_Right	22.87	24.87	30	PASS
N78-3700-3800	30	30	DFT-16QAM	M	Outer_Full	20.53	22.53	30	PASS
N78-3700-3800	30	30	DFT-64QAM	M	Inner_1RB_Left	20.33	22.33	30	PASS
N78-3700-3800	30	30	DFT-64QAM	M	Inner_1RB_Right	20.37	22.37	30	PASS
N78-3700-3800	30	30	DFT-64QAM	M	Outer_Full	20.19	22.19	30	PASS
N78-3700-3800	30	30	DFT-256QAM	M	Inner_1RB_Left	17.63	19.63	30	PASS
N78-3700-3800	30	30	DFT-256QAM	M	Inner_1RB_Right	17.67	19.67	30	PASS
N78-3700-3800	30	30	DFT-256QAM	M	Outer_Full	18.03	20.03	30	PASS
N78-3700-3800	30	30	DFT-PI2BPSK	H	Inner_1RB_Left	22.76	24.76	30	PASS
N78-3700-3800	30	30	DFT-PI2BPSK	H	Inner_1RB_Right	22.94	24.94	30	PASS
N78-3700-3800	30	30	DFT-PI2BPSK	H	Outer_Full	21.39	23.39	30	PASS
N78-3700-3800	30	30	DFT-QPSK	H	Inner_1RB_Left	23.31	25.31	30	PASS
N78-3700-3800	30	30	DFT-QPSK	H	Inner_1RB_Right	23.25	25.25	30	PASS
N78-3700-3800	30	30	DFT-QPSK	H	Outer_Full	21.26	23.26	30	PASS
N78-3700-3800	30	30	DFT-16QAM	H	Inner_1RB_Left	22.35	24.35	30	PASS
N78-3700-3800	30	30	DFT-16QAM	H	Inner_1RB_Right	22.16	24.16	30	PASS
N78-3700-3800	30	30	DFT-16QAM	H	Outer_Full	19.79	21.79	30	PASS
N78-3700-3800	30	30	DFT-64QAM	H	Inner_1RB_Left	20.02	22.02	30	PASS



Unless otherwise agreed in writing, this document is issued by the Company subject to its General Conditions of Service printed overleaf, available on request or accessible at <http://www.sgs.com/en/Terms-and-Conditions.aspx> and, for electronic format documents, subject to Terms and Conditions for Electronic Documents at <http://www.sgs.com/en/Terms-and-Conditions/Terms-e-Documents.aspx>. Attention is drawn to the limitation of liability, indemnification and jurisdiction issues defined therein. Any holder of this document is advised that information contained hereon reflects the Company's findings at the time of its intervention only and within the limits of Client's instructions, if any. The Company's sole responsibility is to its Client and this document does not exonerate parties to a transaction from exercising all their rights and obligations under the transaction documents. This document cannot be reproduced except in full, without prior written approval of the Company. Any unauthorized alteration, forgery or falsification of the content or appearance of this document is unlawful and offenders may be prosecuted to the fullest extent of the law. Unless otherwise stated the results shown in this test report refer only to the sample(s) tested and such sample(s) are retained for 30 days only.

Attention: To check the authenticity of testing/inspection report & certificate, please contact us at telephone: (86-755) 8307 1443, or email: [CN.Doccheck@sgs.com](mailto:CN.Doccheck@sgs.com)

South of No. 6 Plant, No. 1, Runsheng Road, Suzhou Industrial Park, Suzhou Area, China (Jiangsu) Pilot Free Trade Zone 215000 t (86-512) 62992980 www.sgs.com.cn  
 中国·苏州·中国(江苏)自由贸易试验区苏州片区苏州工业园区润胜路1号的6号厂房南楼 邮编: 215000 t (86-512) 62992980 sgs.china@sgs.com



Report No.: SEWM2306000194RG02

Rev.: 01

Page: 8 of 159

N78-3700-3800	30	30	DFT-64QAM	H	Inner_1RB_Right	19.92	21.92	30	PASS
N78-3700-3800	30	30	DFT-64QAM	H	Outer_Full	19.65	21.65	30	PASS
N78-3700-3800	30	30	DFT-256QAM	H	Inner_1RB_Left	17.59	19.59	30	PASS
N78-3700-3800	30	30	DFT-256QAM	H	Inner_1RB_Right	17.02	19.02	30	PASS
N78-3700-3800	30	30	DFT-256QAM	H	Outer_Full	17.49	19.49	30	PASS
N78-3700-3800	30	40	DFT-PI2BPSK	L	Inner_1RB_Left	24.08	26.08	30	PASS
N78-3700-3800	30	40	DFT-PI2BPSK	L	Inner_1RB_Right	23.77	25.77	30	PASS
N78-3700-3800	30	40	DFT-PI2BPSK	L	Outer_Full	22.50	24.50	30	PASS
N78-3700-3800	30	40	DFT-QPSK	L	Inner_1RB_Left	24.15	26.15	30	PASS
N78-3700-3800	30	40	DFT-QPSK	L	Inner_1RB_Right	23.29	25.29	30	PASS
N78-3700-3800	30	40	DFT-QPSK	L	Outer_Full	22.85	24.85	30	PASS
N78-3700-3800	30	40	DFT-16QAM	L	Inner_1RB_Left	21.80	23.80	30	PASS
N78-3700-3800	30	40	DFT-16QAM	L	Inner_1RB_Right	21.40	23.40	30	PASS
N78-3700-3800	30	40	DFT-16QAM	L	Outer_Full	21.59	23.59	30	PASS
N78-3700-3800	30	40	DFT-64QAM	L	Inner_1RB_Left	20.49	22.49	30	PASS
N78-3700-3800	30	40	DFT-64QAM	L	Inner_1RB_Right	20.47	22.47	30	PASS
N78-3700-3800	30	40	DFT-64QAM	L	Outer_Full	20.16	22.16	30	PASS
N78-3700-3800	30	40	DFT-256QAM	L	Inner_1RB_Left	18.48	20.48	30	PASS
N78-3700-3800	30	40	DFT-256QAM	L	Inner_1RB_Right	18.21	20.21	30	PASS
N78-3700-3800	30	40	DFT-256QAM	L	Outer_Full	17.53	19.53	30	PASS
N78-3700-3800	30	40	DFT-PI2BPSK	M	Inner_1RB_Left	24.02	26.02	30	PASS
N78-3700-3800	30	40	DFT-PI2BPSK	M	Inner_1RB_Right	23.13	25.13	30	PASS
N78-3700-3800	30	40	DFT-PI2BPSK	M	Outer_Full	22.06	24.06	30	PASS
N78-3700-3800	30	40	DFT-QPSK	M	Inner_1RB_Left	24.09	26.09	30	PASS
N78-3700-3800	30	40	DFT-QPSK	M	Inner_1RB_Right	23.34	25.34	30	PASS
N78-3700-3800	30	40	DFT-QPSK	M	Outer_Full	24.06	26.06	30	PASS
N78-3700-3800	30	40	DFT-16QAM	M	Inner_1RB_Left	23.08	25.08	30	PASS
N78-3700-3800	30	40	DFT-16QAM	M	Inner_1RB_Right	22.67	24.67	30	PASS
N78-3700-3800	30	40	DFT-16QAM	M	Outer_Full	22.14	24.14	30	PASS
N78-3700-3800	30	40	DFT-64QAM	M	Inner_1RB_Left	21.60	23.60	30	PASS
N78-3700-3800	30	40	DFT-64QAM	M	Inner_1RB_Right	21.16	23.16	30	PASS
N78-3700-3800	30	40	DFT-64QAM	M	Outer_Full	21.42	23.42	30	PASS
N78-3700-3800	30	40	DFT-256QAM	M	Inner_1RB_Left	17.91	19.91	30	PASS
N78-3700-3800	30	40	DFT-256QAM	M	Inner_1RB_Right	17.86	19.86	30	PASS
N78-3700-3800	30	40	DFT-256QAM	M	Outer_Full	18.31	20.31	30	PASS
N78-3700-3800	30	40	DFT-PI2BPSK	H	Inner_1RB_Left	23.04	25.04	30	PASS
N78-3700-3800	30	40	DFT-PI2BPSK	H	Inner_1RB_Right	22.68	24.68	30	PASS
N78-3700-3800	30	40	DFT-PI2BPSK	H	Outer_Full	21.89	23.89	30	PASS



Unless otherwise agreed in writing, this document is issued by the Company subject to its General Conditions of Service printed overleaf, available on request or accessible at <http://www.sgs.com/en/Terms-and-Conditions.aspx> and, for electronic format documents, subject to Terms and Conditions for Electronic Documents at <http://www.sgs.com/en/Terms-and-Conditions/Terms-e-Documents.aspx>. Attention is drawn to the limitation of liability, indemnification and jurisdiction issues defined therein. Any holder of this document is advised that information contained hereon reflects the Company's findings at the time of its intervention only and within the limits of Client's instructions, if any. The Company's sole responsibility is to its Client and this document does not exonerate parties to a transaction from exercising all their rights and obligations under the transaction documents. This document cannot be reproduced except in full, without prior written approval of the Company. Any unauthorized alteration, forgery or falsification of the content or appearance of this document is unlawful and offenders may be prosecuted to the fullest extent of the law. Unless otherwise stated the results shown in this test report refer only to the sample(s) tested and such sample(s) are retained for 30 days only.

Attention: To check the authenticity of testing/inspection report & certificate, please contact us at telephone: (86-755) 8307 1443, or email: [CN.Doccheck@sgs.com](mailto:CN.Doccheck@sgs.com)

South of No. 6 Plant, No. 1, Runsheng Road, Suzhou Industrial Park, Suzhou Area, China (Jiangsu) Pilot Free Trade Zone 215000 t (86-512) 62992980 www.sgs.com.cn  
 中国·苏州·中国(江苏)自由贸易试验区苏州片区苏州工业园区润胜路1号的6号厂房南楼 邮编: 215000 t (86-512) 62992980 sgs.china@sgs.com





Report No.: SEWM2306000194RG02

Rev.: 01

Page: 9 of 159

N78-3700-3800	30	40	DFT-QPSK	H	Inner_1RB_Left	22.41	24.41	30	PASS
N78-3700-3800	30	40	DFT-QPSK	H	Inner_1RB_Right	22.85	24.85	30	PASS
N78-3700-3800	30	40	DFT-QPSK	H	Outer_Full	21.29	23.29	30	PASS
N78-3700-3800	30	40	DFT-16QAM	H	Inner_1RB_Left	22.01	24.01	30	PASS
N78-3700-3800	30	40	DFT-16QAM	H	Inner_1RB_Right	21.95	23.95	30	PASS
N78-3700-3800	30	40	DFT-16QAM	H	Outer_Full	20.48	22.48	30	PASS
N78-3700-3800	30	40	DFT-64QAM	H	Inner_1RB_Left	20.45	22.45	30	PASS
N78-3700-3800	30	40	DFT-64QAM	H	Inner_1RB_Right	20.06	22.06	30	PASS
N78-3700-3800	30	40	DFT-64QAM	H	Outer_Full	19.70	21.70	30	PASS
N78-3700-3800	30	40	DFT-256QAM	H	Inner_1RB_Left	18.43	20.43	30	PASS
N78-3700-3800	30	40	DFT-256QAM	H	Inner_1RB_Right	17.17	19.17	30	PASS
N78-3700-3800	30	40	DFT-256QAM	H	Outer_Full	17.58	19.58	30	PASS
N78-3700-3800	30	50	DFT-PI2BPSK	L	Inner_1RB_Left	24.25	26.25	30	PASS
N78-3700-3800	30	50	DFT-PI2BPSK	L	Inner_1RB_Right	23.19	25.19	30	PASS
N78-3700-3800	30	50	DFT-PI2BPSK	L	Outer_Full	22.41	24.41	30	PASS
N78-3700-3800	30	50	DFT-QPSK	L	Inner_1RB_Left	23.92	25.92	30	PASS
N78-3700-3800	30	50	DFT-QPSK	L	Inner_1RB_Right	23.80	25.80	30	PASS
N78-3700-3800	30	50	DFT-QPSK	L	Outer_Full	22.41	24.41	30	PASS
N78-3700-3800	30	50	DFT-16QAM	L	Inner_1RB_Left	22.97	24.97	30	PASS
N78-3700-3800	30	50	DFT-16QAM	L	Inner_1RB_Right	22.51	24.51	30	PASS
N78-3700-3800	30	50	DFT-16QAM	L	Outer_Full	20.66	22.66	30	PASS
N78-3700-3800	30	50	DFT-64QAM	L	Inner_1RB_Left	20.81	22.81	30	PASS
N78-3700-3800	30	50	DFT-64QAM	L	Inner_1RB_Right	20.95	22.95	30	PASS
N78-3700-3800	30	50	DFT-64QAM	L	Outer_Full	20.36	22.36	30	PASS
N78-3700-3800	30	50	DFT-256QAM	L	Inner_1RB_Left	18.82	20.82	30	PASS
N78-3700-3800	30	50	DFT-256QAM	L	Inner_1RB_Right	18.28	20.28	30	PASS
N78-3700-3800	30	50	DFT-256QAM	L	Outer_Full	18.71	20.71	30	PASS
N78-3700-3800	30	50	DFT-PI2BPSK	M	Inner_1RB_Left	23.87	25.87	30	PASS
N78-3700-3800	30	50	DFT-PI2BPSK	M	Inner_1RB_Right	23.25	25.25	30	PASS
N78-3700-3800	30	50	DFT-PI2BPSK	M	Outer_Full	22.18	24.18	30	PASS
N78-3700-3800	30	50	DFT-QPSK	M	Inner_1RB_Left	22.65	24.65	30	PASS
N78-3700-3800	30	50	DFT-QPSK	M	Inner_1RB_Right	23.12	25.12	30	PASS
N78-3700-3800	30	50	DFT-QPSK	M	Outer_Full	21.99	23.99	30	PASS
N78-3700-3800	30	50	DFT-16QAM	M	Inner_1RB_Left	22.69	24.69	30	PASS
N78-3700-3800	30	50	DFT-16QAM	M	Inner_1RB_Right	22.12	24.12	30	PASS
N78-3700-3800	30	50	DFT-16QAM	M	Outer_Full	21.00	23.00	30	PASS
N78-3700-3800	30	50	DFT-64QAM	M	Inner_1RB_Left	20.90	22.90	30	PASS
N78-3700-3800	30	50	DFT-64QAM	M	Inner_1RB_Right	20.30	22.30	30	PASS



Unless otherwise agreed in writing, this document is issued by the Company subject to its General Conditions of Service printed overleaf, available on request or accessible at <http://www.sgs.com/en/Terms-and-Conditions.aspx> and, for electronic format documents, subject to Terms and Conditions for Electronic Documents at <http://www.sgs.com/en/Terms-and-Conditions/Terms-e-Documents.aspx>. Attention is drawn to the limitation of liability, indemnification and jurisdiction issues defined therein. Any holder of this document is advised that information contained hereon reflects the Company's findings at the time of its intervention only and within the limits of Client's instructions, if any. The Company's sole responsibility is to its Client and this document does not exonerate parties to a transaction from exercising all their rights and obligations under the transaction documents. This document cannot be reproduced except in full, without prior written approval of the Company. Any unauthorized alteration, forgery or falsification of the content or appearance of this document is unlawful and offenders may be prosecuted to the fullest extent of the law. Unless otherwise stated the results shown in this test report refer only to the sample(s) tested and such sample(s) are retained for 30 days only.

Attention: To check the authenticity of testing/inspection report & certificate, please contact us at telephone: (86-755) 8307 1443, or email: [CN.Doccheck@sgs.com](mailto:CN.Doccheck@sgs.com)

South of No. 6 Plant, No. 1, Runsheng Road, Suzhou Industrial Park, Suzhou Area, China (Jiangsu) Pilot Free Trade Zone 215000 t (86-512) 62992980 www.sgs.com.cn  
 中国·苏州·中国(江苏)自由贸易试验区苏州片区苏州工业园区润胜路1号的6号厂房南楼 邮编: 215000 t (86-512) 62992980 sgs.china@sgs.com



Report No.: SEWM2306000194RG02

Rev.: 01

Page: 10 of 159

N78-3700-3800	30	50	DFT-64QAM	M	Outer_Full	19.95	21.95	30	PASS
N78-3700-3800	30	50	DFT-256QAM	M	Inner_1RB_Left	18.28	20.28	30	PASS
N78-3700-3800	30	50	DFT-256QAM	M	Inner_1RB_Right	17.48	19.48	30	PASS
N78-3700-3800	30	50	DFT-256QAM	M	Outer_Full	17.80	19.80	30	PASS
N78-3700-3800	30	50	DFT-PI2BPSK	H	Inner_1RB_Left	23.09	25.09	30	PASS
N78-3700-3800	30	50	DFT-PI2BPSK	H	Inner_1RB_Right	23.09	25.09	30	PASS
N78-3700-3800	30	50	DFT-PI2BPSK	H	Outer_Full	21.87	23.87	30	PASS
N78-3700-3800	30	50	DFT-QPSK	H	Inner_1RB_Left	23.46	25.46	30	PASS
N78-3700-3800	30	50	DFT-QPSK	H	Inner_1RB_Right	23.09	25.09	30	PASS
N78-3700-3800	30	50	DFT-QPSK	H	Outer_Full	21.25	23.25	30	PASS
N78-3700-3800	30	50	DFT-16QAM	H	Inner_1RB_Left	22.62	24.62	30	PASS
N78-3700-3800	30	50	DFT-16QAM	H	Inner_1RB_Right	21.95	23.95	30	PASS
N78-3700-3800	30	50	DFT-16QAM	H	Outer_Full	20.25	22.25	30	PASS
N78-3700-3800	30	50	DFT-64QAM	H	Inner_1RB_Left	20.53	22.53	30	PASS
N78-3700-3800	30	50	DFT-64QAM	H	Inner_1RB_Right	19.86	21.86	30	PASS
N78-3700-3800	30	50	DFT-64QAM	H	Outer_Full	19.52	21.52	30	PASS
N78-3700-3800	30	50	DFT-256QAM	H	Inner_1RB_Left	17.23	19.23	30	PASS
N78-3700-3800	30	50	DFT-256QAM	H	Inner_1RB_Right	17.26	19.26	30	PASS
N78-3700-3800	30	50	DFT-256QAM	H	Outer_Full	17.59	19.59	30	PASS
N78-3700-3800	30	60	DFT-PI2BPSK	L	Inner_1RB_Left	24.13	26.13	30	PASS
N78-3700-3800	30	60	DFT-PI2BPSK	L	Inner_1RB_Right	24.00	26.00	30	PASS
N78-3700-3800	30	60	DFT-PI2BPSK	L	Outer_Full	22.26	24.26	30	PASS
N78-3700-3800	30	60	DFT-QPSK	L	Inner_1RB_Left	24.09	26.09	30	PASS
N78-3700-3800	30	60	DFT-QPSK	L	Inner_1RB_Right	23.70	25.70	30	PASS
N78-3700-3800	30	60	DFT-QPSK	L	Outer_Full	21.81	23.81	30	PASS
N78-3700-3800	30	60	DFT-16QAM	L	Inner_1RB_Left	23.04	25.04	30	PASS
N78-3700-3800	30	60	DFT-16QAM	L	Inner_1RB_Right	22.26	24.26	30	PASS
N78-3700-3800	30	60	DFT-16QAM	L	Outer_Full	21.03	23.03	30	PASS
N78-3700-3800	30	60	DFT-64QAM	L	Inner_1RB_Left	21.07	23.07	30	PASS
N78-3700-3800	30	60	DFT-64QAM	L	Inner_1RB_Right	20.45	22.45	30	PASS
N78-3700-3800	30	60	DFT-64QAM	L	Outer_Full	20.66	22.66	30	PASS
N78-3700-3800	30	60	DFT-256QAM	L	Inner_1RB_Left	18.93	20.93	30	PASS
N78-3700-3800	30	60	DFT-256QAM	L	Inner_1RB_Right	17.81	19.81	30	PASS
N78-3700-3800	30	60	DFT-256QAM	L	Outer_Full	17.99	19.99	30	PASS
N78-3700-3800	30	60	DFT-PI2BPSK	M	Inner_1RB_Left	23.31	25.31	30	PASS
N78-3700-3800	30	60	DFT-PI2BPSK	M	Inner_1RB_Right	23.14	25.14	30	PASS
N78-3700-3800	30	60	DFT-PI2BPSK	M	Outer_Full	22.35	24.35	30	PASS
N78-3700-3800	30	60	DFT-QPSK	M	Inner_1RB_Left	23.49	25.49	30	PASS



Unless otherwise agreed in writing, this document is issued by the Company subject to its General Conditions of Service printed overleaf, available on request or accessible at <http://www.sgs.com/en/Terms-and-Conditions.aspx> and, for electronic format documents, subject to Terms and Conditions for Electronic Documents at <http://www.sgs.com/en/Terms-and-Conditions/Terms-e-Documents.aspx>. Attention is drawn to the limitation of liability, indemnification and jurisdiction issues defined therein. Any holder of this document is advised that information contained hereon reflects the Company's findings at the time of its intervention only and within the limits of Client's instructions, if any. The Company's sole responsibility is to its Client and this document does not exonerate parties to a transaction from exercising all their rights and obligations under the transaction documents. This document cannot be reproduced except in full, without prior written approval of the Company. Any unauthorized alteration, forgery or falsification of the content or appearance of this document is unlawful and offenders may be prosecuted to the fullest extent of the law. Unless otherwise stated the results shown in this test report refer only to the sample(s) tested and such sample(s) are retained for 30 days only.

Attention: To check the authenticity of testing/inspection report & certificate, please contact us at telephone: (86-755) 8307 1443, or email: [CN.Doccheck@sgs.com](mailto:CN.Doccheck@sgs.com)

South of No. 6 Plant, No. 1, Runsheng Road, Suzhou Industrial Park, Suzhou Area, China (Jiangsu) Pilot Free Trade Zone 215000 t (86-512) 62992980 www.sgs.com.cn  
 中国·苏州·中国(江苏)自由贸易试验区苏州片区苏州工业园区润胜路1号的6号厂房南楼 邮编: 215000 t (86-512) 62992980 sgs.china@sgs.com



Report No.: SEWM2306000194RG02

Rev.: 01

Page: 11 of 159

N78-3700-3800	30	60	DFT-QPSK	M	Inner_1RB_Right	23.06	25.06	30	PASS
N78-3700-3800	30	60	DFT-QPSK	M	Outer_Full	21.33	23.33	30	PASS
N78-3700-3800	30	60	DFT-16QAM	M	Inner_1RB_Left	22.81	24.81	30	PASS
N78-3700-3800	30	60	DFT-16QAM	M	Inner_1RB_Right	22.72	24.72	30	PASS
N78-3700-3800	30	60	DFT-16QAM	M	Outer_Full	20.26	22.26	30	PASS
N78-3700-3800	30	60	DFT-64QAM	M	Inner_1RB_Left	20.96	22.96	30	PASS
N78-3700-3800	30	60	DFT-64QAM	M	Inner_1RB_Right	19.82	21.82	30	PASS
N78-3700-3800	30	60	DFT-64QAM	M	Outer_Full	19.92	21.92	30	PASS
N78-3700-3800	30	60	DFT-256QAM	M	Inner_1RB_Left	17.94	19.94	30	PASS
N78-3700-3800	30	60	DFT-256QAM	M	Inner_1RB_Right	17.85	19.85	30	PASS
N78-3700-3800	30	60	DFT-256QAM	M	Outer_Full	18.26	20.26	30	PASS
N78-3700-3800	30	60	DFT-PI2BPSK	H	Inner_1RB_Left	24.07	26.07	30	PASS
N78-3700-3800	30	60	DFT-PI2BPSK	H	Inner_1RB_Right	22.63	24.63	30	PASS
N78-3700-3800	30	60	DFT-PI2BPSK	H	Outer_Full	22.24	24.24	30	PASS
N78-3700-3800	30	60	DFT-QPSK	H	Inner_1RB_Left	23.86	25.86	30	PASS
N78-3700-3800	30	60	DFT-QPSK	H	Inner_1RB_Right	23.19	25.19	30	PASS
N78-3700-3800	30	60	DFT-QPSK	H	Outer_Full	21.90	23.90	30	PASS
N78-3700-3800	30	60	DFT-16QAM	H	Inner_1RB_Left	22.63	24.63	30	PASS
N78-3700-3800	30	60	DFT-16QAM	H	Inner_1RB_Right	21.45	23.45	30	PASS
N78-3700-3800	30	60	DFT-16QAM	H	Outer_Full	20.04	22.04	30	PASS
N78-3700-3800	30	60	DFT-64QAM	H	Inner_1RB_Left	20.59	22.59	30	PASS
N78-3700-3800	30	60	DFT-64QAM	H	Inner_1RB_Right	19.55	21.55	30	PASS
N78-3700-3800	30	60	DFT-64QAM	H	Outer_Full	19.76	21.76	30	PASS
N78-3700-3800	30	60	DFT-256QAM	H	Inner_1RB_Left	18.69	20.69	30	PASS
N78-3700-3800	30	60	DFT-256QAM	H	Inner_1RB_Right	17.30	19.30	30	PASS
N78-3700-3800	30	60	DFT-256QAM	H	Outer_Full	18.15	20.15	30	PASS
N78-3700-3800	30	70	DFT-PI2BPSK	L	Inner_1RB_Left	24.00	26.00	30	PASS
N78-3700-3800	30	70	DFT-PI2BPSK	L	Inner_1RB_Right	23.00	25.00	30	PASS
N78-3700-3800	30	70	DFT-PI2BPSK	L	Outer_Full	22.70	24.70	30	PASS
N78-3700-3800	30	70	DFT-QPSK	L	Inner_1RB_Left	24.58	26.58	30	PASS
N78-3700-3800	30	70	DFT-QPSK	L	Inner_1RB_Right	23.68	25.68	30	PASS
N78-3700-3800	30	70	DFT-QPSK	L	Outer_Full	21.45	23.45	30	PASS
N78-3700-3800	30	70	DFT-16QAM	L	Inner_1RB_Left	23.32	25.32	30	PASS
N78-3700-3800	30	70	DFT-16QAM	L	Inner_1RB_Right	22.65	24.65	30	PASS
N78-3700-3800	30	70	DFT-16QAM	L	Outer_Full	21.24	23.24	30	PASS
N78-3700-3800	30	70	DFT-64QAM	L	Inner_1RB_Left	21.02	23.02	30	PASS
N78-3700-3800	30	70	DFT-64QAM	L	Inner_1RB_Right	19.89	21.89	30	PASS
N78-3700-3800	30	70	DFT-64QAM	L	Outer_Full	20.40	22.40	30	PASS



Unless otherwise agreed in writing, this document is issued by the Company subject to its General Conditions of Service printed overleaf, available on request or accessible at <http://www.sgs.com/en/Terms-and-Conditions.aspx> and, for electronic format documents, subject to Terms and Conditions for Electronic Documents at <http://www.sgs.com/en/Terms-and-Conditions/Terms-e-Documents.aspx>. Attention is drawn to the limitation of liability, indemnification and jurisdiction issues defined therein. Any holder of this document is advised that information contained hereon reflects the Company's findings at the time of its intervention only and within the limits of Client's instructions, if any. The Company's sole responsibility is to its Client and this document does not exonerate parties to a transaction from exercising all their rights and obligations under the transaction documents. This document cannot be reproduced except in full, without prior written approval of the Company. Any unauthorized alteration, forgery or falsification of the content or appearance of this document is unlawful and offenders may be prosecuted to the fullest extent of the law. Unless otherwise stated the results shown in this test report refer only to the sample(s) tested and such sample(s) are retained for 30 days only.

Attention: To check the authenticity of testing/inspection report & certificate, please contact us at telephone: (86-755) 83071443, or email: [CN.Doccheck@sgs.com](mailto:CN.Doccheck@sgs.com)

South of No. 6 Plant, No. 1, Runsheng Road, Suzhou Industrial Park, Suzhou Area, China (Jiangsu) Pilot Free Trade Zone 215000 t (86-512) 62992980 www.sgs.com.cn  
 中国·苏州·中国(江苏)自由贸易试验区苏州片区苏州工业园区润胜路1号的6号厂房南楼 邮编: 215000 t (86-512) 62992980 sgs.china@sgs.com



Report No.: SEWM2306000194RG02

Rev.: 01

Page: 12 of 159

N78-3700-3800	30	70	DFT-256QAM	L	Inner_1RB_Left	18.84	20.84	30	PASS
N78-3700-3800	30	70	DFT-256QAM	L	Inner_1RB_Right	17.56	19.56	30	PASS
N78-3700-3800	30	70	DFT-256QAM	L	Outer_Full	18.75	20.75	30	PASS
N78-3700-3800	30	70	DFT-PI2BPSK	M	Inner_1RB_Left	23.82	25.82	30	PASS
N78-3700-3800	30	70	DFT-PI2BPSK	M	Inner_1RB_Right	23.40	25.40	30	PASS
N78-3700-3800	30	70	DFT-PI2BPSK	M	Outer_Full	22.46	24.46	30	PASS
N78-3700-3800	30	70	DFT-QPSK	M	Inner_1RB_Left	23.59	25.59	30	PASS
N78-3700-3800	30	70	DFT-QPSK	M	Inner_1RB_Right	23.10	25.10	30	PASS
N78-3700-3800	30	70	DFT-QPSK	M	Outer_Full	21.60	23.60	30	PASS
N78-3700-3800	30	70	DFT-16QAM	M	Inner_1RB_Left	22.97	24.97	30	PASS
N78-3700-3800	30	70	DFT-16QAM	M	Inner_1RB_Right	22.11	24.11	30	PASS
N78-3700-3800	30	70	DFT-16QAM	M	Outer_Full	20.51	22.51	30	PASS
N78-3700-3800	30	70	DFT-64QAM	M	Inner_1RB_Left	21.10	23.10	30	PASS
N78-3700-3800	30	70	DFT-64QAM	M	Inner_1RB_Right	19.58	21.58	30	PASS
N78-3700-3800	30	70	DFT-64QAM	M	Outer_Full	20.14	22.14	30	PASS
N78-3700-3800	30	70	DFT-256QAM	M	Inner_1RB_Left	17.91	19.91	30	PASS
N78-3700-3800	30	70	DFT-256QAM	M	Inner_1RB_Right	17.28	19.28	30	PASS
N78-3700-3800	30	70	DFT-256QAM	M	Outer_Full	17.51	19.51	30	PASS
N78-3700-3800	30	70	DFT-PI2BPSK	H	Inner_1RB_Left	23.60	25.60	30	PASS
N78-3700-3800	30	70	DFT-PI2BPSK	H	Inner_1RB_Right	22.49	24.49	30	PASS
N78-3700-3800	30	70	DFT-PI2BPSK	H	Outer_Full	21.70	23.70	30	PASS
N78-3700-3800	30	70	DFT-QPSK	H	Inner_1RB_Left	23.80	25.80	30	PASS
N78-3700-3800	30	70	DFT-QPSK	H	Inner_1RB_Right	22.94	24.94	30	PASS
N78-3700-3800	30	70	DFT-QPSK	H	Outer_Full	21.20	23.20	30	PASS
N78-3700-3800	30	70	DFT-16QAM	H	Inner_1RB_Left	22.90	24.90	30	PASS
N78-3700-3800	30	70	DFT-16QAM	H	Inner_1RB_Right	21.53	23.53	30	PASS
N78-3700-3800	30	70	DFT-16QAM	H	Outer_Full	20.61	22.61	30	PASS
N78-3700-3800	30	70	DFT-64QAM	H	Inner_1RB_Left	20.57	22.57	30	PASS
N78-3700-3800	30	70	DFT-64QAM	H	Inner_1RB_Right	20.25	22.25	30	PASS
N78-3700-3800	30	70	DFT-64QAM	H	Outer_Full	20.11	22.11	30	PASS
N78-3700-3800	30	70	DFT-256QAM	H	Inner_1RB_Left	18.37	20.37	30	PASS
N78-3700-3800	30	70	DFT-256QAM	H	Inner_1RB_Right	16.85	18.85	30	PASS
N78-3700-3800	30	70	DFT-256QAM	H	Outer_Full	17.50	19.50	30	PASS
N78-3700-3800	30	80	DFT-PI2BPSK	L	Inner_1RB_Left	23.77	25.77	30	PASS
N78-3700-3800	30	80	DFT-PI2BPSK	L	Inner_1RB_Right	23.23	25.23	30	PASS
N78-3700-3800	30	80	DFT-PI2BPSK	L	Outer_Full	22.40	24.40	30	PASS
N78-3700-3800	30	80	DFT-QPSK	L	Inner_1RB_Left	23.17	25.17	30	PASS
N78-3700-3800	30	80	DFT-QPSK	L	Inner_1RB_Right	23.24	25.24	30	PASS



Unless otherwise agreed in writing, this document is issued by the Company subject to its General Conditions of Service printed overleaf, available on request or accessible at <http://www.sgs.com/en/Terms-and-Conditions.aspx> and, for electronic format documents, subject to Terms and Conditions for Electronic Documents at <http://www.sgs.com/en/Terms-and-Conditions/Terms-e-Documents.aspx>. Attention is drawn to the limitation of liability, indemnification and jurisdiction issues defined therein. Any holder of this document is advised that information contained hereon reflects the Company's findings at the time of its intervention only and within the limits of Client's instructions, if any. The Company's sole responsibility is to its Client and this document does not exonerate parties to a transaction from exercising all their rights and obligations under the transaction documents. This document cannot be reproduced except in full, without prior written approval of the Company. Any unauthorized alteration, forgery or falsification of the content or appearance of this document is unlawful and offenders may be prosecuted to the fullest extent of the law. Unless otherwise stated the results shown in this test report refer only to the sample(s) tested and such sample(s) are retained for 30 days only.

Attention: To check the authenticity of testing/inspection report & certificate, please contact us at telephone: (86-755) 83071443, or email: [CN.Doccheck@sgs.com](mailto:CN.Doccheck@sgs.com)

South of No. 6 Plant, No. 1, Ransheng Road, Suzhou Industrial Park, Suzhou Area, China (Jiangsu) Pilot Free Trade Zone 215000 t (86-512) 62992980 www.sgs.com.cn  
 中国·苏州·中国(江苏)自由贸易试验区苏州片区苏州工业园区润胜路1号的6号厂房南楼 邮编: 215000 t (86-512) 62992980 sgs.china@sgs.com



Report No.: SEWM2306000194RG02

Rev.: 01

Page: 13 of 159

N78-3700-3800	30	80	DFT-QPSK	L	Outer_Full	22.08	24.08	30	PASS
N78-3700-3800	30	80	DFT-16QAM	L	Inner_1RB_Left	23.43	25.43	30	PASS
N78-3700-3800	30	80	DFT-16QAM	L	Inner_1RB_Right	22.04	24.04	30	PASS
N78-3700-3800	30	80	DFT-16QAM	L	Outer_Full	20.97	22.97	30	PASS
N78-3700-3800	30	80	DFT-64QAM	L	Inner_1RB_Left	21.31	23.31	30	PASS
N78-3700-3800	30	80	DFT-64QAM	L	Inner_1RB_Right	19.81	21.81	30	PASS
N78-3700-3800	30	80	DFT-64QAM	L	Outer_Full	20.33	22.33	30	PASS
N78-3700-3800	30	80	DFT-256QAM	L	Inner_1RB_Left	18.68	20.68	30	PASS
N78-3700-3800	30	80	DFT-256QAM	L	Inner_1RB_Right	17.04	19.04	30	PASS
N78-3700-3800	30	80	DFT-256QAM	L	Outer_Full	17.94	19.94	30	PASS
N78-3700-3800	30	80	DFT-PI2BPSK	M	Inner_1RB_Left	24.27	26.27	30	PASS
N78-3700-3800	30	80	DFT-PI2BPSK	M	Inner_1RB_Right	23.10	25.10	30	PASS
N78-3700-3800	30	80	DFT-PI2BPSK	M	Outer_Full	22.14	24.14	30	PASS
N78-3700-3800	30	80	DFT-QPSK	M	Inner_1RB_Left	23.81	25.81	30	PASS
N78-3700-3800	30	80	DFT-QPSK	M	Inner_1RB_Right	22.72	24.72	30	PASS
N78-3700-3800	30	80	DFT-QPSK	M	Outer_Full	22.13	24.13	30	PASS
N78-3700-3800	30	80	DFT-16QAM	M	Inner_1RB_Left	22.81	24.81	30	PASS
N78-3700-3800	30	80	DFT-16QAM	M	Inner_1RB_Right	21.75	23.75	30	PASS
N78-3700-3800	30	80	DFT-16QAM	M	Outer_Full	20.30	22.30	30	PASS
N78-3700-3800	30	80	DFT-64QAM	M	Inner_1RB_Left	20.98	22.98	30	PASS
N78-3700-3800	30	80	DFT-64QAM	M	Inner_1RB_Right	20.11	22.11	30	PASS
N78-3700-3800	30	80	DFT-64QAM	M	Outer_Full	20.17	22.17	30	PASS
N78-3700-3800	30	80	DFT-256QAM	M	Inner_1RB_Left	18.42	20.42	30	PASS
N78-3700-3800	30	80	DFT-256QAM	M	Inner_1RB_Right	17.06	19.06	30	PASS
N78-3700-3800	30	80	DFT-256QAM	M	Outer_Full	18.47	20.47	30	PASS
N78-3700-3800	30	80	DFT-PI2BPSK	H	Inner_1RB_Left	23.91	25.91	30	PASS
N78-3700-3800	30	80	DFT-PI2BPSK	H	Inner_1RB_Right	22.92	24.92	30	PASS
N78-3700-3800	30	80	DFT-PI2BPSK	H	Outer_Full	22.25	24.25	30	PASS
N78-3700-3800	30	80	DFT-QPSK	H	Inner_1RB_Left	24.39	26.39	30	PASS
N78-3700-3800	30	80	DFT-QPSK	H	Inner_1RB_Right	23.00	25.00	30	PASS
N78-3700-3800	30	80	DFT-QPSK	H	Outer_Full	21.49	23.49	30	PASS
N78-3700-3800	30	80	DFT-16QAM	H	Inner_1RB_Left	23.43	25.43	30	PASS
N78-3700-3800	30	80	DFT-16QAM	H	Inner_1RB_Right	21.75	23.75	30	PASS
N78-3700-3800	30	80	DFT-16QAM	H	Outer_Full	20.39	22.39	30	PASS
N78-3700-3800	30	80	DFT-64QAM	H	Inner_1RB_Left	20.71	22.71	30	PASS
N78-3700-3800	30	80	DFT-64QAM	H	Inner_1RB_Right	20.03	22.03	30	PASS
N78-3700-3800	30	80	DFT-64QAM	H	Outer_Full	20.12	22.12	30	PASS
N78-3700-3800	30	80	DFT-256QAM	H	Inner_1RB_Left	18.60	20.60	30	PASS



Unless otherwise agreed in writing, this document is issued by the Company subject to its General Conditions of Service printed overleaf, available on request or accessible at <http://www.sgs.com/en/Terms-and-Conditions.aspx> and, for electronic format documents, subject to Terms and Conditions for Electronic Documents at <http://www.sgs.com/en/Terms-and-Conditions/Terms-e-Documents.aspx>. Attention is drawn to the limitation of liability, indemnification and jurisdiction issues defined therein. Any holder of this document is advised that information contained hereon reflects the Company's findings at the time of its intervention only and within the limits of Client's instructions, if any. The Company's sole responsibility is to its Client and this document does not exonerate parties to a transaction from exercising all their rights and obligations under the transaction documents. This document cannot be reproduced except in full, without prior written approval of the Company. Any unauthorized alteration, forgery or falsification of the content or appearance of this document is unlawful and offenders may be prosecuted to the fullest extent of the law. Unless otherwise stated the results shown in this test report refer only to the sample(s) tested and such sample(s) are retained for 30 days only.

Attention: To check the authenticity of testing/inspection report & certificate, please contact us at telephone: (86-755) 8307 1443, or email: [CN.Doccheck@sgs.com](mailto:CN.Doccheck@sgs.com)

South of No. 6 Plant, No. 1, Runsheng Road, Suzhou Industrial Park, Suzhou Area, China (Jiangsu) Pilot Free Trade Zone 215000 t (86-512) 62992980 www.sgs.com.cn  
 中国·苏州·中国(江苏)自由贸易试验区苏州片区苏州工业园区润胜路1号的6号厂房南楼 邮编: 215000 t (86-512) 62992980 sgs.china@sgs.com



Report No.: SEWM2306000194RG02

Rev.: 01

Page: 14 of 159

N78-3700-3800	30	80	DFT-256QAM	H	Inner_1RB_Right	17.15	19.15	30	PASS
N78-3700-3800	30	80	DFT-256QAM	H	Outer_Full	17.47	19.47	30	PASS
N78-3700-3800	30	90	DFT-PI2BPSK	L	Inner_1RB_Left	24.38	26.38	30	PASS
N78-3700-3800	30	90	DFT-PI2BPSK	L	Inner_1RB_Right	23.30	25.30	30	PASS
N78-3700-3800	30	90	DFT-PI2BPSK	L	Outer_Full	21.83	23.83	30	PASS
N78-3700-3800	30	90	DFT-QPSK	L	Inner_1RB_Left	23.92	25.92	30	PASS
N78-3700-3800	30	90	DFT-QPSK	L	Inner_1RB_Right	23.21	25.21	30	PASS
N78-3700-3800	30	90	DFT-QPSK	L	Outer_Full	21.75	23.75	30	PASS
N78-3700-3800	30	90	DFT-16QAM	L	Inner_1RB_Left	23.34	25.34	30	PASS
N78-3700-3800	30	90	DFT-16QAM	L	Inner_1RB_Right	21.83	23.83	30	PASS
N78-3700-3800	30	90	DFT-16QAM	L	Outer_Full	20.77	22.77	30	PASS
N78-3700-3800	30	90	DFT-64QAM	L	Inner_1RB_Left	20.95	22.95	30	PASS
N78-3700-3800	30	90	DFT-64QAM	L	Inner_1RB_Right	20.48	22.48	30	PASS
N78-3700-3800	30	90	DFT-64QAM	L	Outer_Full	20.09	22.09	30	PASS
N78-3700-3800	30	90	DFT-256QAM	L	Inner_1RB_Left	18.20	20.20	30	PASS
N78-3700-3800	30	90	DFT-256QAM	L	Inner_1RB_Right	17.58	19.58	30	PASS
N78-3700-3800	30	90	DFT-256QAM	L	Outer_Full	18.25	20.25	30	PASS
N78-3700-3800	30	90	DFT-PI2BPSK	M	Inner_1RB_Left	24.05	26.05	30	PASS
N78-3700-3800	30	90	DFT-PI2BPSK	M	Inner_1RB_Right	22.99	24.99	30	PASS
N78-3700-3800	30	90	DFT-PI2BPSK	M	Outer_Full	21.73	23.73	30	PASS
N78-3700-3800	30	90	DFT-QPSK	M	Inner_1RB_Left	24.23	26.23	30	PASS
N78-3700-3800	30	90	DFT-QPSK	M	Inner_1RB_Right	23.06	25.06	30	PASS
N78-3700-3800	30	90	DFT-QPSK	M	Outer_Full	21.86	23.86	30	PASS
N78-3700-3800	30	90	DFT-16QAM	M	Inner_1RB_Left	23.07	25.07	30	PASS
N78-3700-3800	30	90	DFT-16QAM	M	Inner_1RB_Right	21.83	23.83	30	PASS
N78-3700-3800	30	90	DFT-16QAM	M	Outer_Full	20.54	22.54	30	PASS
N78-3700-3800	30	90	DFT-64QAM	M	Inner_1RB_Left	20.69	22.69	30	PASS
N78-3700-3800	30	90	DFT-64QAM	M	Inner_1RB_Right	19.63	21.63	30	PASS
N78-3700-3800	30	90	DFT-64QAM	M	Outer_Full	20.03	22.03	30	PASS
N78-3700-3800	30	90	DFT-256QAM	M	Inner_1RB_Left	18.32	20.32	30	PASS
N78-3700-3800	30	90	DFT-256QAM	M	Inner_1RB_Right	16.78	18.78	30	PASS
N78-3700-3800	30	90	DFT-256QAM	M	Outer_Full	18.27	20.27	30	PASS
N78-3700-3800	30	90	DFT-PI2BPSK	H	Inner_1RB_Left	24.29	26.29	30	PASS
N78-3700-3800	30	90	DFT-PI2BPSK	H	Inner_1RB_Right	23.02	25.02	30	PASS
N78-3700-3800	30	90	DFT-PI2BPSK	H	Outer_Full	22.20	24.20	30	PASS
N78-3700-3800	30	90	DFT-QPSK	H	Inner_1RB_Left	24.62	26.62	30	PASS
N78-3700-3800	30	90	DFT-QPSK	H	Inner_1RB_Right	22.81	24.81	30	PASS
N78-3700-3800	30	90	DFT-QPSK	H	Outer_Full	21.97	23.97	30	PASS



Unless otherwise agreed in writing, this document is issued by the Company subject to its General Conditions of Service printed overleaf, available on request or accessible at <http://www.sgs.com/en/Terms-and-Conditions.aspx> and, for electronic format documents, subject to Terms and Conditions for Electronic Documents at <http://www.sgs.com/en/Terms-and-Conditions/Terms-e-Documents.aspx>. Attention is drawn to the limitation of liability, indemnification and jurisdiction issues defined therein. Any holder of this document is advised that information contained hereon reflects the Company's findings at the time of its intervention only and within the limits of Client's instructions, if any. The Company's sole responsibility is to its Client and this document does not exonerate parties to a transaction from exercising all their rights and obligations under the transaction documents. This document cannot be reproduced except in full, without prior written approval of the Company. Any unauthorized alteration, forgery or falsification of the content or appearance of this document is unlawful and offenders may be prosecuted to the fullest extent of the law. Unless otherwise stated the results shown in this test report refer only to the sample(s) tested and such sample(s) are retained for 30 days only.

Attention: To check the authenticity of testing/inspection report & certificate, please contact us at telephone: (86-755) 83071443, or email: [CN.Doccheck@sgs.com](mailto:CN.Doccheck@sgs.com)

South of No. 6 Plant, No. 1, Runsheng Road, Suzhou Industrial Park, Suzhou Area, China (Jiangsu) Pilot Free Trade Zone 215000 t (86-512) 62992980 www.sgs.com.cn  
 中国·苏州·中国(江苏)自由贸易试验区苏州片区苏州工业园区润胜路1号的6号厂房南楼 邮编: 215000 t (86-512) 62992980 sgs.china@sgs.com

Report No.: SEWM2306000194RG02

Rev.: 01

Page: 15 of 159

N78-3700-3800	30	90	DFT-16QAM	H	Inner_1RB_Left	23.04	25.04	30	PASS
N78-3700-3800	30	90	DFT-16QAM	H	Inner_1RB_Right	22.22	24.22	30	PASS
N78-3700-3800	30	90	DFT-16QAM	H	Outer_Full	20.91	22.91	30	PASS
N78-3700-3800	30	90	DFT-64QAM	H	Inner_1RB_Left	21.11	23.11	30	PASS
N78-3700-3800	30	90	DFT-64QAM	H	Inner_1RB_Right	19.71	21.71	30	PASS
N78-3700-3800	30	90	DFT-64QAM	H	Outer_Full	19.93	21.93	30	PASS
N78-3700-3800	30	90	DFT-256QAM	H	Inner_1RB_Left	18.37	20.37	30	PASS
N78-3700-3800	30	90	DFT-256QAM	H	Inner_1RB_Right	17.23	19.23	30	PASS
N78-3700-3800	30	90	DFT-256QAM	H	Outer_Full	17.77	19.77	30	PASS
N78-3700-3800	30	100	DFT-PI2BPSK	L	Inner_1RB_Left	23.73	25.73	30	PASS
N78-3700-3800	30	100	DFT-PI2BPSK	L	Inner_1RB_Right	22.96	24.96	30	PASS
N78-3700-3800	30	100	DFT-PI2BPSK	L	Outer_Full	22.45	24.45	30	PASS
N78-3700-3800	30	100	DFT-QPSK	L	Inner_1RB_Left	23.85	25.85	30	PASS
N78-3700-3800	30	100	DFT-QPSK	L	Inner_1RB_Right	23.11	25.11	30	PASS
N78-3700-3800	30	100	DFT-QPSK	L	Outer_Full	22.02	24.02	30	PASS
N78-3700-3800	30	100	DFT-16QAM	L	Inner_1RB_Left	23.43	25.43	30	PASS
N78-3700-3800	30	100	DFT-16QAM	L	Inner_1RB_Right	21.84	23.84	30	PASS
N78-3700-3800	30	100	DFT-16QAM	L	Outer_Full	20.59	22.59	30	PASS
N78-3700-3800	30	100	DFT-64QAM	L	Inner_1RB_Left	21.11	23.11	30	PASS
N78-3700-3800	30	100	DFT-64QAM	L	Inner_1RB_Right	19.92	21.92	30	PASS
N78-3700-3800	30	100	DFT-64QAM	L	Outer_Full	20.15	22.15	30	PASS
N78-3700-3800	30	100	DFT-256QAM	L	Inner_1RB_Left	18.14	20.14	30	PASS
N78-3700-3800	30	100	DFT-256QAM	L	Inner_1RB_Right	17.22	19.22	30	PASS
N78-3700-3800	30	100	DFT-256QAM	L	Outer_Full	18.15	20.15	30	PASS
N78-3700-3800	30	100	DFT-PI2BPSK	M	Inner_1RB_Left	24.14	26.14	30	PASS
N78-3700-3800	30	100	DFT-PI2BPSK	M	Inner_1RB_Right	22.98	24.98	30	PASS
N78-3700-3800	30	100	DFT-PI2BPSK	M	Outer_Full	21.95	23.95	30	PASS
N78-3700-3800	30	100	DFT-QPSK	M	Inner_1RB_Left	23.97	25.97	30	PASS
N78-3700-3800	30	100	DFT-QPSK	M	Inner_1RB_Right	22.78	24.78	30	PASS
N78-3700-3800	30	100	DFT-QPSK	M	Outer_Full	21.82	23.82	30	PASS
N78-3700-3800	30	100	DFT-16QAM	M	Inner_1RB_Left	22.90	24.90	30	PASS
N78-3700-3800	30	100	DFT-16QAM	M	Inner_1RB_Right	22.05	24.05	30	PASS
N78-3700-3800	30	100	DFT-16QAM	M	Outer_Full	21.23	23.23	30	PASS
N78-3700-3800	30	100	DFT-64QAM	M	Inner_1RB_Left	20.76	22.76	30	PASS
N78-3700-3800	30	100	DFT-64QAM	M	Inner_1RB_Right	19.86	21.86	30	PASS
N78-3700-3800	30	100	DFT-64QAM	M	Outer_Full	20.28	22.28	30	PASS
N78-3700-3800	30	100	DFT-256QAM	M	Inner_1RB_Left	18.43	20.43	30	PASS
N78-3700-3800	30	100	DFT-256QAM	M	Inner_1RB_Right	17.06	19.06	30	PASS



Unless otherwise agreed in writing, this document is issued by the Company subject to its General Conditions of Service printed overleaf, available on request or accessible at <http://www.sgs.com/en/Terms-and-Conditions.aspx> and, for electronic format documents, subject to Terms and Conditions for Electronic Documents at <http://www.sgs.com/en/Terms-and-Conditions/Terms-e-Documents.aspx>. Attention is drawn to the limitation of liability, indemnification and jurisdiction issues defined therein. Any holder of this document is advised that information contained hereon reflects the Company's findings at the time of its intervention only and within the limits of Client's instructions, if any. The Company's sole responsibility is to its Client and this document does not exonerate parties to a transaction from exercising all their rights and obligations under the transaction documents. This document cannot be reproduced except in full, without prior written approval of the Company. Any unauthorized alteration, forgery or falsification of the content or appearance of this document is unlawful and offenders may be prosecuted to the fullest extent of the law. Unless otherwise stated the results shown in this test report refer only to the sample(s) tested and such sample(s) are retained for 30 days only.

Attention: To check the authenticity of testing/inspection report & certificate, please contact us at telephone: (86-755) 8307 1443, or email: [CN.Doccheck@sgs.com](mailto:CN.Doccheck@sgs.com)

South of No. 6 Plant, No. 1, Runsheng Road, Suzhou Industrial Park, Suzhou Area, China (Jiangsu) Pilot Free Trade Zone 215000 t (86-512) 62992980 www.sgs.com.cn  
 中国·苏州·中国(江苏)自由贸易试验区苏州片区苏州工业园区润胜路1号的6号厂房南楼 邮编: 215000 t (86-512) 62992980 sgs.china@sgs.com

Report No.: SEWM2306000194RG02

Rev.: 01

Page: 16 of 159

N78-3700-3800	30	100	DFT-256QAM	M	Outer_Full	17.93	19.93	30	PASS
N78-3700-3800	30	100	DFT-PI2BPSK	H	Inner_1RB_Left	24.24	26.24	30	PASS
N78-3700-3800	30	100	DFT-PI2BPSK	H	Inner_1RB_Right	23.12	25.12	30	PASS
N78-3700-3800	30	100	DFT-PI2BPSK	H	Outer_Full	22.01	24.01	30	PASS
N78-3700-3800	30	100	DFT-QPSK	H	Inner_1RB_Left	24.25	26.25	30	PASS
N78-3700-3800	30	100	DFT-QPSK	H	Inner_1RB_Right	23.03	25.03	30	PASS
N78-3700-3800	30	100	DFT-QPSK	H	Outer_Full	23.61	25.61	30	PASS
N78-3700-3800	30	100	DFT-16QAM	H	Inner_1RB_Left	21.72	23.72	30	PASS
N78-3700-3800	30	100	DFT-16QAM	H	Inner_1RB_Right	21.81	23.81	30	PASS
N78-3700-3800	30	100	DFT-16QAM	H	Outer_Full	20.99	22.99	30	PASS
N78-3700-3800	30	100	DFT-64QAM	H	Inner_1RB_Left	19.51	21.51	30	PASS
N78-3700-3800	30	100	DFT-64QAM	H	Inner_1RB_Right	19.83	21.83	30	PASS
N78-3700-3800	30	100	DFT-64QAM	H	Outer_Full	20.06	22.06	30	PASS
N78-3700-3800	30	100	DFT-256QAM	H	Inner_1RB_Left	18.73	20.73	30	PASS
N78-3700-3800	30	100	DFT-256QAM	H	Inner_1RB_Right	18.07	20.07	30	PASS
N78-3700-3800	30	100	DFT-256QAM	H	Outer_Full	17.99	19.99	30	PASS



Unless otherwise agreed in writing, this document is issued by the Company subject to its General Conditions of Service printed overleaf, available on request or accessible at <http://www.sgs.com/en/Terms-and-Conditions.aspx> and, for electronic format documents, subject to Terms and Conditions for Electronic Documents at <http://www.sgs.com/en/Terms-and-Conditions/Terms-e-Documents.aspx>. Attention is drawn to the limitation of liability, indemnification and jurisdiction issues defined therein. Any holder of this document is advised that information contained hereon reflects the Company's findings at the time of its intervention only and within the limits of Client's instructions, if any. The Company's sole responsibility is to its Client and this document does not exonerate parties to a transaction from exercising all their rights and obligations under the transaction documents. This document cannot be reproduced except in full, without prior written approval of the Company. Any unauthorized alteration, forgery or falsification of the content or appearance of this document is unlawful and offenders may be prosecuted to the fullest extent of the law. Unless otherwise stated the results shown in this test report refer only to the sample(s) tested and such sample(s) are retained for 30 days only.

**Attention: To check the authenticity of testing/inspection report & certificate, please contact us at telephone: (86-755) 8307 1443, or email: CN.Doccheck@sgs.com**

South of No. 6 Plant, No. 1, Runsheng Road, Suzhou Industrial Park, Suzhou Area, China (Jiangsu) Pilot Free Trade Zone 215000  
 中国·苏州·中国(江苏)自由贸易试验区苏州片区苏州工业园区润胜路1号的6号厂房南楼 邮编: 215000

t (86-512) 62992980 www.sgs.com.cn  
 t (86-512) 62992980 sgs.china@sgs.com



## Peak-to-Average Ratio for SA

### Test Result

Band	SCS	Band width	Modulation	Chan nel	RB Config	Duty Cycle	Factor	Result	Limit	Verdict
N78-3700-3800	30	100	DFT-256QAM	L	Outer_Full	100%	0.00	9.30	≤13	PASS
N78-3700-3800	30	100	CP-256QAM	L	Outer_Full	100%	0.00	9.89	≤13	PASS
N78-3700-3800	30	100	DFT-256QAM	M	Outer_Full	100%	0.00	9.33	≤13	PASS
N78-3700-3800	30	100	CP-256QAM	M	Outer_Full	100%	0.00	9.74	≤13	PASS
N78-3700-3800	30	100	DFT-256QAM	H	Outer_Full	100%	0.00	9.94	≤13	PASS
N78-3700-3800	30	100	CP-256QAM	H	Outer_Full	100%	0.00	9.33	≤13	PASS



Unless otherwise agreed in writing, this document is issued by the Company subject to its General Conditions of Service printed overleaf, available on request or accessible at <http://www.sgs.com/en/Terms-and-Conditions.aspx> and, for electronic format documents, subject to Terms and Conditions for Electronic Documents at <http://www.sgs.com/en/Terms-and-Conditions/Terms-e-Documents.aspx>. Attention is drawn to the limitation of liability, indemnification and jurisdiction issues defined therein. Any holder of this document is advised that information contained hereon reflects the Company's findings at the time of its intervention only and within the limits of Client's instructions, if any. The Company's sole responsibility is to its Client and this document does not exonerate parties to a transaction from exercising all their rights and obligations under the transaction documents. This document cannot be reproduced except in full, without prior written approval of the Company. Any unauthorized alteration, forgery or falsification of the content or appearance of this document is unlawful and offenders may be prosecuted to the fullest extent of the law. Unless otherwise stated the results shown in this test report refer only to the sample(s) tested and such sample(s) are retained for 30 days only.

Attention: To check the authenticity of testing/inspection report & certificate, please contact us at telephone: (86-755) 8307 1443, or email: [CN.Doccheck@sgs.com](mailto:CN.Doccheck@sgs.com)

South of No. 6 Plant, No. 1, Runsheng Road, Suzhou Industrial Park, Suzhou Area, China (Jiangsu) Pilot Free Trade Zone 215000  
 中国·苏州·中国(江苏)自由贸易试验区苏州片区苏州工业园区润胜路1号的6号厂房南楼 邮编: 215000

t (86-512) 62992980 www.sgs.com.cn  
 t (86-512) 62992980 sgs.china@sgs.com

Test Graphs

<p>1-N78-3700-3800-PC3-30-100-L-1-DFT-256QAM-Outer_Full-270@0-Ant1-9.30-100%-0.00-9.30-PASS-&lt;=1</p> <p style="text-align: center;">3</p>	<p>1-N78-3700-3800-PC3-30-100-L-2-CP-256QAM-Outer_Full-273@0-Ant1-9.89-100%-0.00-9.89-PASS-&lt;=1</p> <p style="text-align: center;">3</p>
<p>1-N78-3700-3800-PC3-30-100-M-1-DFT-256QAM-Outer_Full-270@0-Ant1-9.33-100%-0.00-9.33-PASS-&lt;=1</p> <p style="text-align: center;">13</p>	<p>1-N78-3700-3800-PC3-30-100-M-2-CP-256QAM-Outer_Full-273@0-Ant1-9.74-100%-0.00-9.74-PASS-&lt;=1</p> <p style="text-align: center;">3</p>

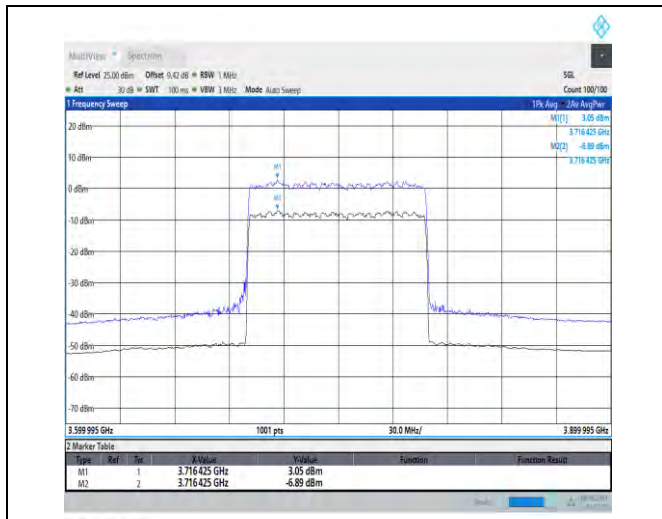


Unless otherwise agreed in writing, this document is issued by the Company subject to its General Conditions of Service printed overleaf, available on request or accessible at <http://www.sgs.com/en/Terms-and-Conditions.aspx> and, for electronic format documents, subject to Terms and Conditions for Electronic Documents at <http://www.sgs.com/en/Terms-and-Conditions/Terms-e-Documents.aspx>. Attention is drawn to the limitation of liability, indemnification and jurisdiction issues defined therein. Any holder of this document is advised that information contained hereon reflects the Company's findings at the time of its intervention only and within the limits of Client's instructions, if any. The Company's sole responsibility is to its Client and this document does not exonerate parties to a transaction from exercising all their rights and obligations under the transaction documents. This document cannot be reproduced except in full, without prior written approval of the Company. Any unauthorized alteration, forgery or falsification of the content or appearance of this document is unlawful and offenders may be prosecuted to the fullest extent of the law. Unless otherwise stated the results shown in this test report refer only to the sample(s) tested and such sample(s) are retained for 30 days only.

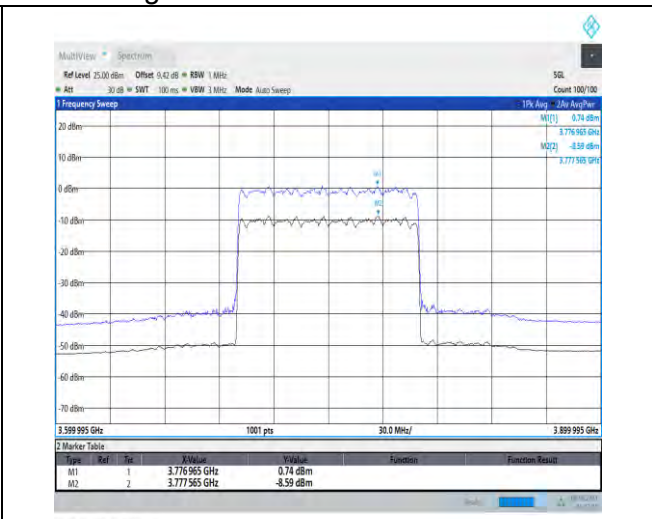
**Attention: To check the authenticity of testing/inspection report & certificate, please contact us at telephone: (86-755) 8307 1443, or email: CN.Doccheck@sgs.com**

South of No. 6 Plant, No. 1, Runsheng Road, Suzhou Industrial Park, Suzhou Area, China (Jiangsu) Pilot Free Trade Zone 215000  
 中国·苏州·中国(江苏)自由贸易试验区苏州片区苏州工业园区润胜路1号的6号厂房南楼 邮编: 215000

t (86-512) 62992980 www.sgs.com.cn  
 t (86-512) 62992980 sgs.china@sgs.com



1-N78-3700-3800-PC3-30-100-H-1-DFT-256QAM-Outer\_Full-270@0-Ant1-9.94-100%-0.00-9.94-PASS-≤1  
 3



1-N78-3700-3800-PC3-30-100-H-2-CP-256QAM-Outer\_Full-273@0-Ant1-9.33-100%-0.00-9.33-PASS-≤1  
 3



## Modulation characteristics for SA

### Test Result

Band	SCS	Bandwidth	Modulation	Channel	RB Config	Result	Verdict
N78-3700-3800	30	100	DFT-PI2BPSK	M	Outer_Full	see graph	PASS
N78-3700-3800	30	100	DFT-QPSK	M	Outer_Full	see graph	PASS
N78-3700-3800	30	100	DFT-16QAM	M	Outer_Full	see graph	PASS
N78-3700-3800	30	100	DFT-64QAM	M	Outer_Full	see graph	PASS
N78-3700-3800	30	100	DFT-256QAM	M	Outer_Full	see graph	PASS
N78-3700-3800	30	100	CP-QPSK	M	Outer_Full	see graph	PASS
N78-3700-3800	30	100	CP-16QAM	M	Outer_Full	see graph	PASS
N78-3700-3800	30	100	CP-64QAM	M	Outer_Full	see graph	PASS
N78-3700-3800	30	100	CP-256QAM	M	Outer_Full	see graph	PASS



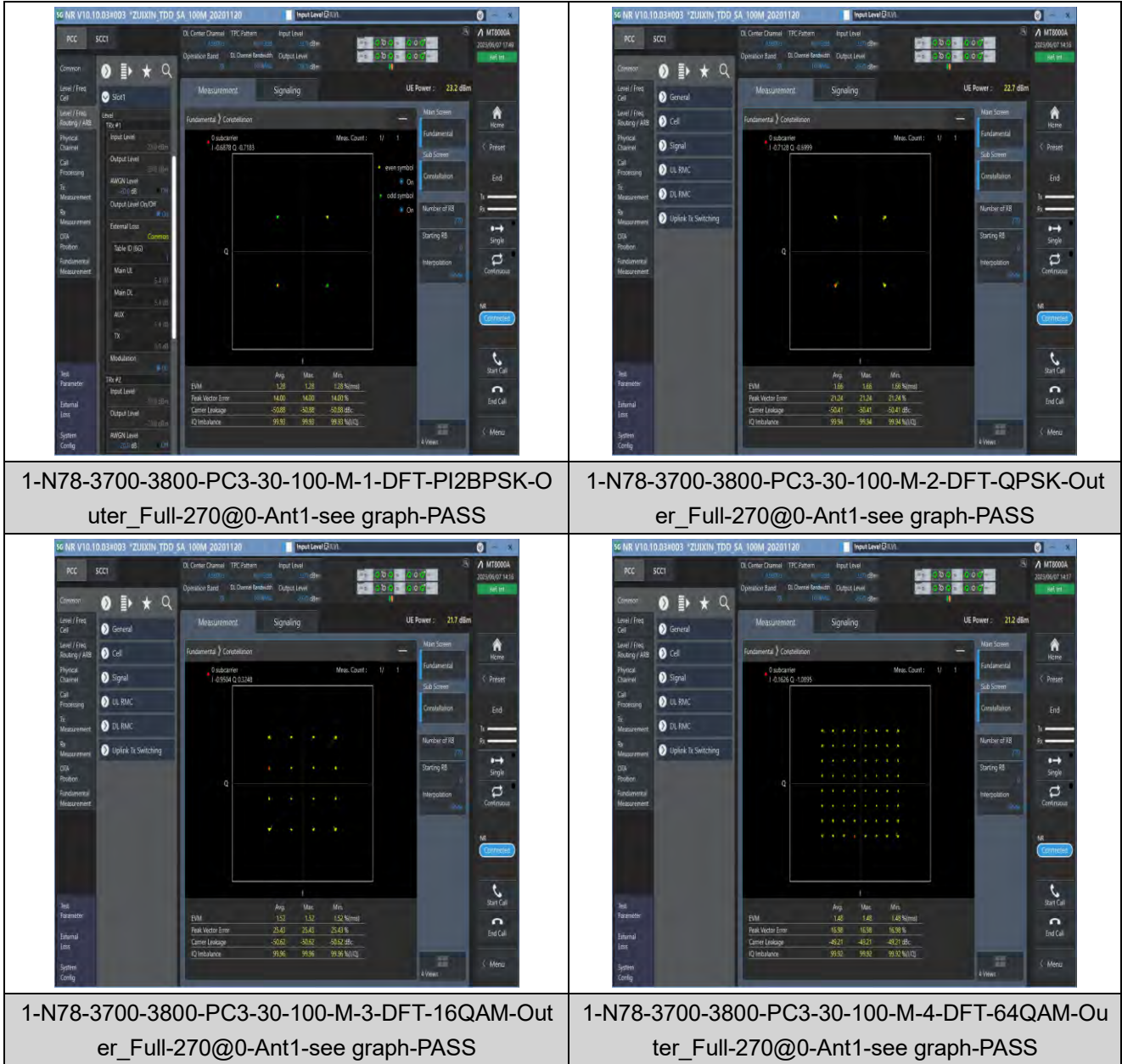
Unless otherwise agreed in writing, this document is issued by the Company subject to its General Conditions of Service printed overleaf, available on request or accessible at <http://www.sgs.com/en/Terms-and-Conditions.aspx> and, for electronic format documents, subject to Terms and Conditions for Electronic Documents at <http://www.sgs.com/en/Terms-and-Conditions/Terms-e-Documents.aspx>. Attention is drawn to the limitation of liability, indemnification and jurisdiction issues defined therein. Any holder of this document is advised that information contained hereon reflects the Company's findings at the time of its intervention only and within the limits of Client's instructions, if any. The Company's sole responsibility is to its Client and this document does not exonerate parties to a transaction from exercising all their rights and obligations under the transaction documents. This document cannot be reproduced except in full, without prior written approval of the Company. Any unauthorized alteration, forgery or falsification of the content or appearance of this document is unlawful and offenders may be prosecuted to the fullest extent of the law. Unless otherwise stated the results shown in this test report refer only to the sample(s) tested and such sample(s) are retained for 30 days only.

Attention: To check the authenticity of testing/inspection report & certificate, please contact us at telephone: (86-755) 8307 1443, or email: [CN.Doccheck@sgs.com](mailto:CN.Doccheck@sgs.com)

South of No. 6 Plant, No. 1, Runsheng Road, Suzhou Industrial Park, Suzhou Area, China (Jiangsu) Pilot Free Trade Zone 215000  
 中国·苏州·中国(江苏)自由贸易试验区苏州片区苏州工业园区润胜路1号的6号厂房南楼 邮编: 215000

t (86-512) 62992980 www.sgs.com.cn  
 t (86-512) 62992980 sgs.china@sgs.com

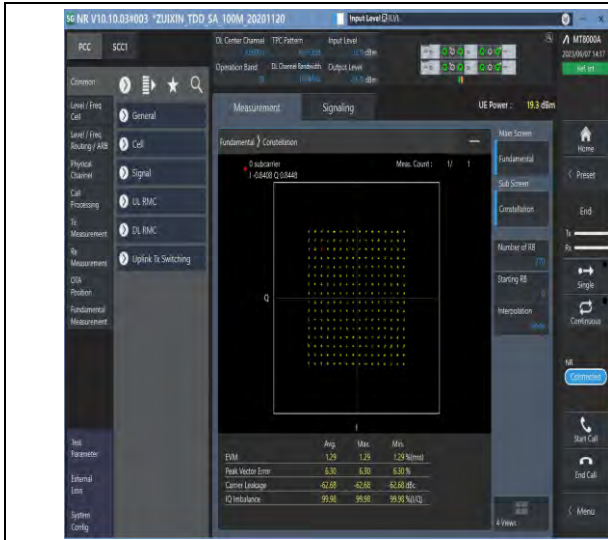
Test Graphs



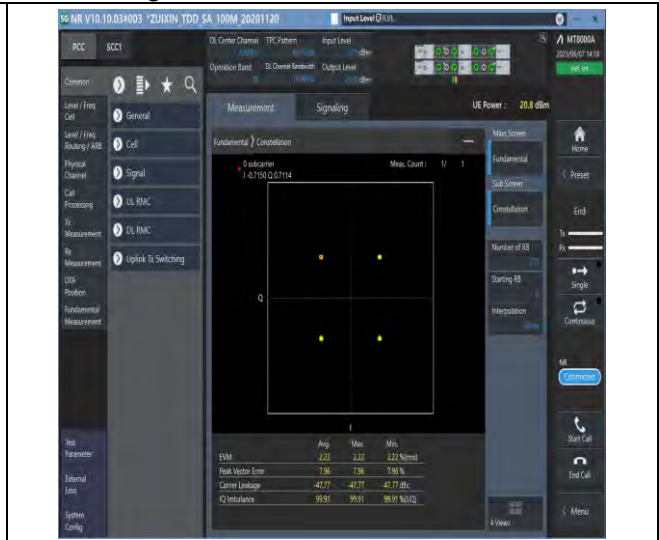
Unless otherwise agreed in writing, this document is issued by the Company subject to its General Conditions of Service printed overleaf, available on request or accessible at <http://www.sgs.com/en/Terms-and-Conditions.aspx> and, for electronic format documents, subject to Terms and Conditions for Electronic Documents at <http://www.sgs.com/en/Terms-and-Conditions/Terms-e-Documents.aspx>. Attention is drawn to the limitation of liability, indemnification and jurisdiction issues defined therein. Any holder of this document is advised that information contained hereon reflects the Company's findings at the time of its intervention only and within the limits of Client's instructions, if any. The Company's sole responsibility is to its Client and this document does not exonerate parties to a transaction from exercising all their rights and obligations under the transaction documents. This document cannot be reproduced except in full, without prior written approval of the Company. Any unauthorized alteration, forgery or falsification of the content or appearance of this document is unlawful and offenders may be prosecuted to the fullest extent of the law. Unless otherwise stated the results shown in this test report refer only to the sample(s) tested and such sample(s) are retained for 30 days only.

Attention: To check the authenticity of testing/inspection report & certificate, please contact us at telephone: (86-755) 8307 1443, or email: CN.Doccheck@sgs.com

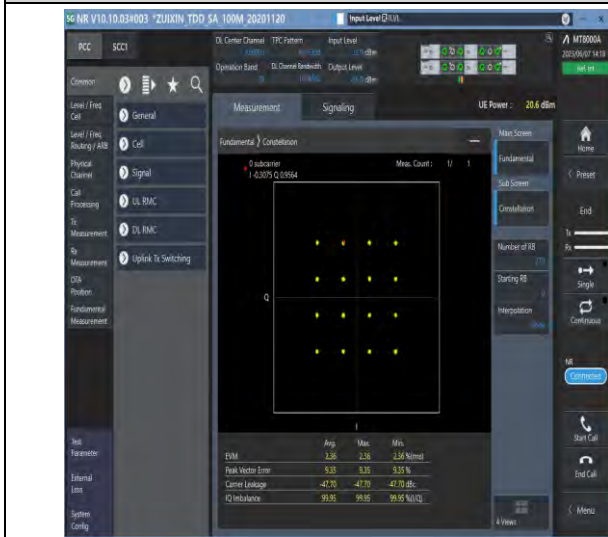
South of No. 6 Plant, No. 1, Runsheng Road, Suzhou Industrial Park, Suzhou Area, China (Jiangsu) Pilot Free Trade Zone 215000 t (86-512) 62992980 www.sgs.com.cn  
 中国·苏州·中国(江苏)自由贸易试验区苏州片区苏州工业园区润胜路1号的6号厂房南楼 邮编: 215000 t (86-512) 62992980 sgs.china@sgs.com



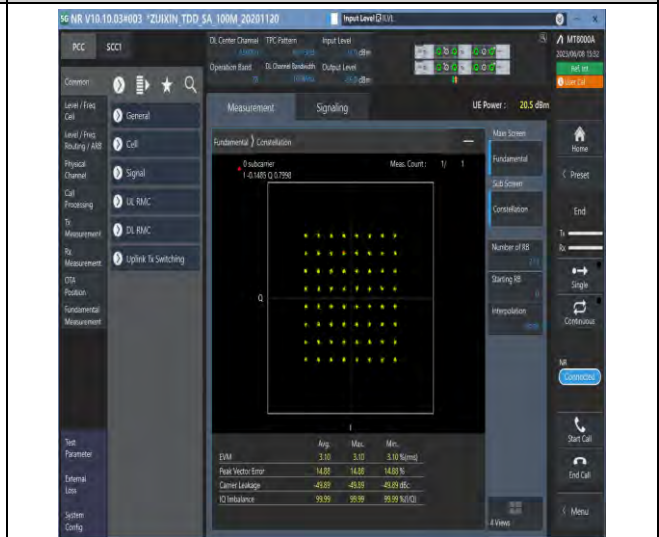
1-N78-3700-3800-PC3-30-100-M-5-DFT-256QAM-Outer\_Full-270@0-Ant1-see graph-PASS



1-N78-3700-3800-PC3-30-100-M-6-CP-QPSK-Outer\_Full-273@0-Ant1-see graph-PASS



1-N78-3700-3800-PC3-30-100-M-7-CP-16QAM-Outer\_Full-273@0-Ant1-see graph-PASS



1-N78-3700-3800-PC3-30-100-M-8-CP-64QAM-Outer\_Full-273@0-Ant1-see graph-PASS

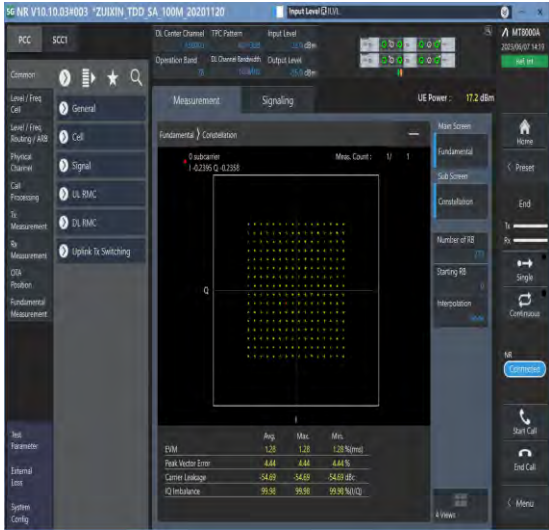


Unless otherwise agreed in writing, this document is issued by the Company subject to its General Conditions of Service printed overleaf, available on request or accessible at <http://www.sgs.com/en/Terms-and-Conditions.aspx> and, for electronic format documents, subject to Terms and Conditions for Electronic Documents at <http://www.sgs.com/en/Terms-and-Conditions/Terms-e-Documents.aspx>. Attention is drawn to the limitation of liability, indemnification and jurisdiction issues defined therein. Any holder of this document is advised that information contained hereon reflects the Company's findings at the time of its intervention only and within the limits of Client's instructions, if any. The Company's sole responsibility is to its Client and this document does not exonerate parties to a transaction from exercising all their rights and obligations under the transaction documents. This document cannot be reproduced except in full, without prior written approval of the Company. Any unauthorized alteration, forgery or falsification of the content or appearance of this document is unlawful and offenders may be prosecuted to the fullest extent of the law. Unless otherwise stated the results shown in this test report refer only to the sample(s) tested and such sample(s) are retained for 30 days only.

**Attention: To check the authenticity of testing/inspection report & certificate, please contact us at telephone: (86-755) 8307 1443, or email: CN.Doccheck@sgs.com**

South of No. 6 Plant, No. 1, Runsheng Road, Suzhou Industrial Park, Suzhou Area, China (Jiangsu) Pilot Free Trade Zone 215000  
 中国·苏州·中国(江苏)自由贸易试验区苏州片区苏州工业园区润胜路1号的6号厂房南面 邮编: 215000

t (86-512) 62992980 www.sgs.com.cn  
 t (86-512) 62992980 sgs.china@sgs.com



1-N78-3700-3800-PC3-30-100-M-9-CP-256QAM-Outer\_Full-273@0-Ant1-see graph-PASS



Unless otherwise agreed in writing, this document is issued by the Company subject to its General Conditions of Service printed overleaf, available on request or accessible at <http://www.sgs.com/en/Terms-and-Conditions.aspx> and, for electronic format documents, subject to Terms and Conditions for Electronic Documents at <http://www.sgs.com/en/Terms-and-Conditions/Terms-e-Documents.aspx>. Attention is drawn to the limitation of liability, indemnification and jurisdiction issues defined therein. Any holder of this document is advised that information contained hereon reflects the Company's findings at the time of its intervention only and within the limits of Client's instructions, if any. The Company's sole responsibility is to its Client and this document does not exonerate parties to a transaction from exercising all their rights and obligations under the transaction documents. This document cannot be reproduced except in full, without prior written approval of the Company. Any unauthorized alteration, forgery or falsification of the content or appearance of this document is unlawful and offenders may be prosecuted to the fullest extent of the law. Unless otherwise stated the results shown in this test report refer only to the sample(s) tested and such sample(s) are retained for 30 days only.

**Attention: To check the authenticity of testing/inspection report & certificate, please contact us at telephone: (86-755) 8307 1443, or email: CN.Doccheck@sgs.com**

South of No. 6 Plant, No. 1, Runsheng Road, Suzhou Industrial Park, Suzhou Area, China (Jiangsu) Pilot Free Trade Zone 215000 t (86-512) 62992980 www.sgs.com.cn  
 中国·苏州·中国(江苏)自由贸易试验区苏州片区苏州工业园区润胜路1号的6号厂房南楼 邮编: 215000 t (86-512) 62992980 sgs.china@sgs.com

## 26dB Bandwidth and Occupied Bandwidth for SA

### Test Result

Band	SCS	Bandwidth	Modulation	Channel	RB Config	Result (99%)	Result (26dB)	Verdict
N78-3700-3800	30	10	DFT-QPSK	L	Outer_Full	8.58	9.440	PASS
N78-3700-3800	30	10	DFT-PI2BPSK	L	Outer_Full	8.607	9.400	PASS
N78-3700-3800	30	10	DFT-16QAM	L	Outer_Full	8.565	9.460	PASS
N78-3700-3800	30	10	DFT-64QAM	L	Outer_Full	8.588	9.520	PASS
N78-3700-3800	30	10	DFT-256QAM	L	Outer_Full	8.6	9.380	PASS
N78-3700-3800	30	10	CP-QPSK	L	Outer_Full	8.587	9.440	PASS
N78-3700-3800	30	10	CP-16QAM	L	Outer_Full	8.585	9.540	PASS
N78-3700-3800	30	10	CP-64QAM	L	Outer_Full	8.571	9.320	PASS
N78-3700-3800	30	10	CP-256QAM	L	Outer_Full	8.563	9.340	PASS
N78-3700-3800	30	10	DFT-QPSK	M	Outer_Full	8.58	9.360	PASS
N78-3700-3800	30	10	DFT-PI2BPSK	M	Outer_Full	8.597	9.500	PASS
N78-3700-3800	30	10	DFT-16QAM	M	Outer_Full	8.579	9.460	PASS
N78-3700-3800	30	10	DFT-64QAM	M	Outer_Full	8.591	9.400	PASS
N78-3700-3800	30	10	DFT-256QAM	M	Outer_Full	8.59	9.340	PASS
N78-3700-3800	30	10	CP-QPSK	M	Outer_Full	8.592	9.540	PASS
N78-3700-3800	30	10	CP-16QAM	M	Outer_Full	8.581	9.440	PASS
N78-3700-3800	30	10	CP-64QAM	M	Outer_Full	8.574	9.420	PASS
N78-3700-3800	30	10	CP-256QAM	M	Outer_Full	8.565	9.420	PASS
N78-3700-3800	30	10	DFT-QPSK	H	Outer_Full	8.595	9.460	PASS
N78-3700-3800	30	10	DFT-PI2BPSK	H	Outer_Full	8.574	9.380	PASS
N78-3700-3800	30	10	DFT-16QAM	H	Outer_Full	8.523	9.120	PASS
N78-3700-3800	30	10	DFT-64QAM	H	Outer_Full	8.58	9.500	PASS
N78-3700-3800	30	10	DFT-256QAM	H	Outer_Full	8.6	9.420	PASS
N78-3700-3800	30	10	CP-QPSK	H	Outer_Full	8.598	9.500	PASS
N78-3700-3800	30	10	CP-16QAM	H	Outer_Full	8.589	9.480	PASS
N78-3700-3800	30	10	CP-64QAM	H	Outer_Full	8.574	9.380	PASS
N78-3700-3800	30	10	CP-256QAM	H	Outer_Full	8.561	9.360	PASS
N78-3700-3800	30	15	DFT-QPSK	L	Outer_Full	12.9	14.130	PASS
N78-3700-3800	30	15	DFT-PI2BPSK	L	Outer_Full	12.888	14.070	PASS
N78-3700-3800	30	15	DFT-16QAM	L	Outer_Full	12.87	14.190	PASS
N78-3700-3800	30	15	DFT-64QAM	L	Outer_Full	12.911	14.280	PASS



Unless otherwise agreed in writing, this document is issued by the Company subject to its General Conditions of Service printed overleaf, available on request or accessible at <http://www.sgs.com/en/Terms-and-Conditions.aspx> and, for electronic format documents, subject to Terms and Conditions for Electronic Documents at <http://www.sgs.com/en/Terms-and-Conditions/Terms-e-Documents.aspx>. Attention is drawn to the limitation of liability, indemnification and jurisdiction issues defined therein. Any holder of this document is advised that information contained hereon reflects the Company's findings at the time of its intervention only and within the limits of Client's instructions, if any. The Company's sole responsibility is to its Client and this document does not exonerate parties to a transaction from exercising all their rights and obligations under the transaction documents. This document cannot be reproduced except in full, without prior written approval of the Company. Any unauthorized alteration, forgery or falsification of the content or appearance of this document is unlawful and offenders may be prosecuted to the fullest extent of the law. Unless otherwise stated the results shown in this test report refer only to the sample(s) tested and such sample(s) are retained for 30 days only.

Attention: To check the authenticity of testing/inspection report & certificate, please contact us at telephone: (86-755) 8307 1443, or email: [CN.Doccheck@sgs.com](mailto:CN.Doccheck@sgs.com)

South of No. 6 Plant, No. 1, Runsheng Road, Suzhou Industrial Park, Suzhou Area, China (Jiangsu) Pilot Free Trade Zone 215000 t (86-512) 62992980 www.sgsgroup.com.cn  
 中国·苏州·中国(江苏)自由贸易试验区苏州片区苏州工业园区润胜路1号的6号厂房南楼 邮编: 215000 t (86-512) 62992980 sgs.china@sgs.com



Report No.: SEWM2306000194RG02

Rev.: 01

Page: 25 of 159

N78-3700-3800	30	15	DFT-256QAM	L	Outer_Full	12.875	14.130	PASS
N78-3700-3800	30	15	CP-QPSK	L	Outer_Full	13.566	14.760	PASS
N78-3700-3800	30	15	CP-16QAM	L	Outer_Full	13.577	14.760	PASS
N78-3700-3800	30	15	CP-64QAM	L	Outer_Full	13.57	14.820	PASS
N78-3700-3800	30	15	CP-256QAM	L	Outer_Full	13.578	14.760	PASS
N78-3700-3800	30	15	DFT-QPSK	M	Outer_Full	12.873	14.160	PASS
N78-3700-3800	30	15	DFT-PI2BPSK	M	Outer_Full	12.898	14.250	PASS
N78-3700-3800	30	15	DFT-16QAM	M	Outer_Full	12.867	14.160	PASS
N78-3700-3800	30	15	DFT-64QAM	M	Outer_Full	12.865	14.130	PASS
N78-3700-3800	30	15	DFT-256QAM	M	Outer_Full	12.874	14.130	PASS
N78-3700-3800	30	15	CP-QPSK	M	Outer_Full	13.577	14.880	PASS
N78-3700-3800	30	15	CP-16QAM	M	Outer_Full	13.584	14.700	PASS
N78-3700-3800	30	15	CP-64QAM	M	Outer_Full	13.576	14.790	PASS
N78-3700-3800	30	15	CP-256QAM	M	Outer_Full	13.569	14.790	PASS
N78-3700-3800	30	15	DFT-QPSK	H	Outer_Full	12.89	14.190	PASS
N78-3700-3800	30	15	DFT-PI2BPSK	H	Outer_Full	12.89	14.100	PASS
N78-3700-3800	30	15	DFT-16QAM	H	Outer_Full	12.861	14.070	PASS
N78-3700-3800	30	15	DFT-64QAM	H	Outer_Full	12.887	14.250	PASS
N78-3700-3800	30	15	DFT-256QAM	H	Outer_Full	12.865	14.130	PASS
N78-3700-3800	30	15	CP-QPSK	H	Outer_Full	13.581	14.700	PASS
N78-3700-3800	30	15	CP-16QAM	H	Outer_Full	13.608	14.730	PASS
N78-3700-3800	30	15	CP-64QAM	H	Outer_Full	13.596	14.820	PASS
N78-3700-3800	30	15	CP-256QAM	H	Outer_Full	13.561	14.640	PASS
N78-3700-3800	30	20	DFT-QPSK	L	Outer_Full	17.876	19.280	PASS
N78-3700-3800	30	20	DFT-PI2BPSK	L	Outer_Full	17.866	19.240	PASS
N78-3700-3800	30	20	DFT-16QAM	L	Outer_Full	17.86	19.480	PASS
N78-3700-3800	30	20	DFT-64QAM	L	Outer_Full	17.94	19.360	PASS
N78-3700-3800	30	20	DFT-256QAM	L	Outer_Full	17.785	19.000	PASS
N78-3700-3800	30	20	CP-QPSK	L	Outer_Full	18.168	19.480	PASS
N78-3700-3800	30	20	CP-16QAM	L	Outer_Full	18.199	19.640	PASS
N78-3700-3800	30	20	CP-64QAM	L	Outer_Full	18.198	19.600	PASS
N78-3700-3800	30	20	CP-256QAM	L	Outer_Full	18.222	19.440	PASS
N78-3700-3800	30	20	DFT-QPSK	M	Outer_Full	17.875	19.120	PASS
N78-3700-3800	30	20	DFT-PI2BPSK	M	Outer_Full	17.89	19.320	PASS
N78-3700-3800	30	20	DFT-16QAM	M	Outer_Full	17.849	19.000	PASS
N78-3700-3800	30	20	DFT-64QAM	M	Outer_Full	17.964	19.360	PASS
N78-3700-3800	30	20	DFT-256QAM	M	Outer_Full	17.825	19.200	PASS
N78-3700-3800	30	20	CP-QPSK	M	Outer_Full	18.184	19.560	PASS



Unless otherwise agreed in writing, this document is issued by the Company subject to its General Conditions of Service printed overleaf, available on request or accessible at <http://www.sgs.com/en/Terms-and-Conditions.aspx> and, for electronic format documents, subject to Terms and Conditions for Electronic Documents at <http://www.sgs.com/en/Terms-and-Conditions/Terms-e-Documents.aspx>. Attention is drawn to the limitation of liability, indemnification and jurisdiction issues defined therein. Any holder of this document is advised that information contained hereon reflects the Company's findings at the time of its intervention only and within the limits of Client's instructions, if any. The Company's sole responsibility is to its Client and this document does not exonerate parties to a transaction from exercising all their rights and obligations under the transaction documents. This document cannot be reproduced except in full, without prior written approval of the Company. Any unauthorized alteration, forgery or falsification of the content or appearance of this document is unlawful and offenders may be prosecuted to the fullest extent of the law. Unless otherwise stated the results shown in this test report refer only to the sample(s) tested and such sample(s) are retained for 30 days only.

Attention: To check the authenticity of testing/inspection report & certificate, please contact us at telephone: (86-755) 8307 1443, or email: [CN.Doccheck@sgs.com](mailto:CN.Doccheck@sgs.com)

South of No. 6 Plant, No. 1, Runsheng Road, Suzhou Industrial Park, Suzhou Area, China (Jiangsu) Pilot Free Trade Zone 215000 t (86-512) 62992980 www.sgs.com.cn  
 中国·苏州·中国(江苏)自由贸易试验区苏州片区苏州工业园区润胜路1号的6号厂房南楼 邮编: 215000 t (86-512) 62992980 sgs.china@sgs.com



Report No.: SEWM2306000194RG02

Rev.: 01

Page: 26 of 159

N78-3700-3800	30	20	CP-16QAM	M	Outer_Full	18.197	19.680	PASS
N78-3700-3800	30	20	CP-64QAM	M	Outer_Full	18.224	19.600	PASS
N78-3700-3800	30	20	CP-256QAM	M	Outer_Full	18.199	19.440	PASS
N78-3700-3800	30	20	DFT-QPSK	H	Outer_Full	17.858	19.080	PASS
N78-3700-3800	30	20	DFT-PI2BPSK	H	Outer_Full	17.872	19.200	PASS
N78-3700-3800	30	20	DFT-16QAM	H	Outer_Full	17.837	19.200	PASS
N78-3700-3800	30	20	DFT-64QAM	H	Outer_Full	17.919	19.280	PASS
N78-3700-3800	30	20	DFT-256QAM	H	Outer_Full	17.803	19.040	PASS
N78-3700-3800	30	20	CP-QPSK	H	Outer_Full	18.212	21.240	PASS
N78-3700-3800	30	20	CP-16QAM	H	Outer_Full	18.209	19.480	PASS
N78-3700-3800	30	20	CP-64QAM	H	Outer_Full	18.226	19.680	PASS
N78-3700-3800	30	20	CP-256QAM	H	Outer_Full	18.201	19.560	PASS
N78-3700-3800	30	25	DFT-QPSK	L	Outer_Full	22.86	24.350	PASS
N78-3700-3800	30	25	DFT-PI2BPSK	L	Outer_Full	22.85	24.500	PASS
N78-3700-3800	30	25	DFT-16QAM	L	Outer_Full	22.818	24.300	PASS
N78-3700-3800	30	25	DFT-64QAM	L	Outer_Full	22.881	24.450	PASS
N78-3700-3800	30	25	DFT-256QAM	L	Outer_Full	22.807	25.250	PASS
N78-3700-3800	30	25	CP-QPSK	L	Outer_Full	23.192	24.800	PASS
N78-3700-3800	30	25	CP-16QAM	L	Outer_Full	23.228	24.950	PASS
N78-3700-3800	30	25	CP-64QAM	L	Outer_Full	23.252	24.800	PASS
N78-3700-3800	30	25	CP-256QAM	L	Outer_Full	23.184	26.100	PASS
N78-3700-3800	30	25	DFT-QPSK	M	Outer_Full	22.923	24.400	PASS
N78-3700-3800	30	25	DFT-PI2BPSK	M	Outer_Full	22.893	24.600	PASS
N78-3700-3800	30	25	DFT-16QAM	M	Outer_Full	22.819	24.350	PASS
N78-3700-3800	30	25	DFT-64QAM	M	Outer_Full	22.881	24.650	PASS
N78-3700-3800	30	25	DFT-256QAM	M	Outer_Full	22.808	24.400	PASS
N78-3700-3800	30	25	CP-QPSK	M	Outer_Full	23.25	24.800	PASS
N78-3700-3800	30	25	CP-16QAM	M	Outer_Full	23.258	24.950	PASS
N78-3700-3800	30	25	CP-64QAM	M	Outer_Full	23.261	24.900	PASS
N78-3700-3800	30	25	CP-256QAM	M	Outer_Full	23.18	24.750	PASS
N78-3700-3800	30	25	DFT-QPSK	H	Outer_Full	22.938	24.400	PASS
N78-3700-3800	30	25	DFT-PI2BPSK	H	Outer_Full	22.886	24.400	PASS
N78-3700-3800	30	25	DFT-16QAM	H	Outer_Full	22.84	24.400	PASS
N78-3700-3800	30	25	DFT-64QAM	H	Outer_Full	22.901	24.600	PASS
N78-3700-3800	30	25	DFT-256QAM	H	Outer_Full	22.799	24.450	PASS
N78-3700-3800	30	25	CP-QPSK	H	Outer_Full	23.27	24.800	PASS
N78-3700-3800	30	25	CP-16QAM	H	Outer_Full	23.242	25.100	PASS
N78-3700-3800	30	25	CP-64QAM	H	Outer_Full	23.236	24.900	PASS



Unless otherwise agreed in writing, this document is issued by the Company subject to its General Conditions of Service printed overleaf, available on request or accessible at <http://www.sgs.com/en/Terms-and-Conditions.aspx> and, for electronic format documents, subject to Terms and Conditions for Electronic Documents at <http://www.sgs.com/en/Terms-and-Conditions/Terms-e-Documents.aspx>. Attention is drawn to the limitation of liability, indemnification and jurisdiction issues defined therein. Any holder of this document is advised that information contained hereon reflects the Company's findings at the time of its intervention only and within the limits of Client's instructions, if any. The Company's sole responsibility is to its Client and this document does not exonerate parties to a transaction from exercising all their rights and obligations under the transaction documents. This document cannot be reproduced except in full, without prior written approval of the Company. Any unauthorized alteration, forgery or falsification of the content or appearance of this document is unlawful and offenders may be prosecuted to the fullest extent of the law. Unless otherwise stated the results shown in this test report refer only to the sample(s) tested and such sample(s) are retained for 30 days only.

Attention: To check the authenticity of testing/inspection report & certificate, please contact us at telephone: (86-755) 8307 1443, or email: [CN.Doccheck@sgs.com](mailto:CN.Doccheck@sgs.com)

South of No. 6 Plant, No. 1, Runsheng Road, Suzhou Industrial Park, Suzhou Area, China (Jiangsu) Pilot Free Trade Zone 215000 t (86-512) 62992980 www.sgs.com.cn  
 中国·苏州·中国(江苏)自由贸易试验区苏州片区苏州工业园区润胜路1号的6号厂房南楼 邮编: 215000 t (86-512) 62992980 sgs.china@sgs.com

Report No.: SEWM2306000194RG02

Rev.: 01

Page: 27 of 159

N78-3700-3800	30	25	CP-256QAM	H	Outer_Full	23.172	24.750	PASS
N78-3700-3800	30	30	DFT-QPSK	L	Outer_Full	26.765	28.560	PASS
N78-3700-3800	30	30	DFT-PI2BPSK	L	Outer_Full	26.797	28.620	PASS
N78-3700-3800	30	30	DFT-16QAM	L	Outer_Full	26.782	28.500	PASS
N78-3700-3800	30	30	DFT-64QAM	L	Outer_Full	26.791	28.560	PASS
N78-3700-3800	30	30	DFT-256QAM	L	Outer_Full	26.717	29.220	PASS
N78-3700-3800	30	30	CP-QPSK	L	Outer_Full	27.772	29.460	PASS
N78-3700-3800	30	30	CP-16QAM	L	Outer_Full	27.837	29.640	PASS
N78-3700-3800	30	30	CP-64QAM	L	Outer_Full	27.8	29.580	PASS
N78-3700-3800	30	30	CP-256QAM	L	Outer_Full	27.765	32.520	PASS
N78-3700-3800	30	30	DFT-QPSK	M	Outer_Full	26.786	28.620	PASS
N78-3700-3800	30	30	DFT-PI2BPSK	M	Outer_Full	27.736	28.02	PASS
N78-3700-3800	30	30	DFT-16QAM	M	Outer_Full	26.814	28.680	PASS
N78-3700-3800	30	30	DFT-64QAM	M	Outer_Full	26.803	28.560	PASS
N78-3700-3800	30	30	DFT-256QAM	M	Outer_Full	26.737	28.620	PASS
N78-3700-3800	30	30	CP-QPSK	M	Outer_Full	27.859	29.580	PASS
N78-3700-3800	30	30	CP-16QAM	M	Outer_Full	27.842	29.640	PASS
N78-3700-3800	30	30	CP-64QAM	M	Outer_Full	27.818	29.580	PASS
N78-3700-3800	30	30	CP-256QAM	M	Outer_Full	27.809	29.460	PASS
N78-3700-3800	30	30	DFT-QPSK	H	Outer_Full	26.793	28.500	PASS
N78-3700-3800	30	30	DFT-PI2BPSK	H	Outer_Full	26.8	28.680	PASS
N78-3700-3800	30	30	DFT-16QAM	H	Outer_Full	26.814	28.620	PASS
N78-3700-3800	30	30	DFT-64QAM	H	Outer_Full	26.789	28.620	PASS
N78-3700-3800	30	30	DFT-256QAM	H	Outer_Full	26.748	28.500	PASS
N78-3700-3800	30	30	CP-QPSK	H	Outer_Full	27.835	29.520	PASS
N78-3700-3800	30	30	CP-16QAM	H	Outer_Full	27.842	29.640	PASS
N78-3700-3800	30	30	CP-64QAM	H	Outer_Full	27.819	29.520	PASS
N78-3700-3800	30	30	CP-256QAM	H	Outer_Full	27.744	29.520	PASS
N78-3700-3800	30	40	DFT-QPSK	L	Outer_Full	35.689	37.920	PASS
N78-3700-3800	30	40	DFT-PI2BPSK	L	Outer_Full	35.725	37.920	PASS
N78-3700-3800	30	40	DFT-16QAM	L	Outer_Full	35.69	38.240	PASS
N78-3700-3800	30	40	DFT-64QAM	L	Outer_Full	35.702	37.920	PASS
N78-3700-3800	30	40	DFT-256QAM	L	Outer_Full	35.666	39.440	PASS
N78-3700-3800	30	40	CP-QPSK	L	Outer_Full	37.87	40.000	PASS
N78-3700-3800	30	40	CP-16QAM	L	Outer_Full	37.787	40.160	PASS
N78-3700-3800	30	40	CP-64QAM	L	Outer_Full	37.824	40.160	PASS
N78-3700-3800	30	40	CP-256QAM	L	Outer_Full	37.806	50.560	PASS
N78-3700-3800	30	40	DFT-QPSK	M	Outer_Full	35.629	38.160	PASS



Unless otherwise agreed in writing, this document is issued by the Company subject to its General Conditions of Service printed overleaf, available on request or accessible at <http://www.sgs.com/en/Terms-and-Conditions.aspx> and, for electronic format documents, subject to Terms and Conditions for Electronic Documents at <http://www.sgs.com/en/Terms-and-Conditions/Terms-e-Documents.aspx>. Attention is drawn to the limitation of liability, indemnification and jurisdiction issues defined therein. Any holder of this document is advised that information contained hereon reflects the Company's findings at the time of its intervention only and within the limits of Client's instructions, if any. The Company's sole responsibility is to its Client and this document does not exonerate parties to a transaction from exercising all their rights and obligations under the transaction documents. This document cannot be reproduced except in full, without prior written approval of the Company. Any unauthorized alteration, forgery or falsification of the content or appearance of this document is unlawful and offenders may be prosecuted to the fullest extent of the law. Unless otherwise stated the results shown in this test report refer only to the sample(s) tested and such sample(s) are retained for 30 days only.

Attention: To check the authenticity of testing/inspection report & certificate, please contact us at telephone: (86-755) 8307 1443, or email: [CN.Doccheck@sgs.com](mailto:CN.Doccheck@sgs.com)

South of No. 6 Plant, No. 1, Runsheng Road, Suzhou Industrial Park, Suzhou Area, China (Jiangsu) Pilot Free Trade Zone 215000 t (86-512) 62992980 www.sgs.com.cn  
 中国·苏州·中国(江苏)自由贸易试验区苏州片区苏州工业园区润胜路1号的6号厂房南楼 邮编: 215000 t (86-512) 62992980 sgs.china@sgs.com



Report No.: SEWM2306000194RG02

Rev.: 01

Page: 28 of 159

N78-3700-3800	30	40	DFT-PI2BPSK	M	Outer_Full	35.681	38.080	PASS
N78-3700-3800	30	40	DFT-16QAM	M	Outer_Full	35.763	38.080	PASS
N78-3700-3800	30	40	DFT-64QAM	M	Outer_Full	35.789	38.080	PASS
N78-3700-3800	30	40	DFT-256QAM	M	Outer_Full	35.711	38.320	PASS
N78-3700-3800	30	40	CP-QPSK	M	Outer_Full	37.899	46.400	PASS
N78-3700-3800	30	40	CP-16QAM	M	Outer_Full	37.825	40.240	PASS
N78-3700-3800	30	40	CP-64QAM	M	Outer_Full	37.816	40.160	PASS
N78-3700-3800	30	40	CP-256QAM	M	Outer_Full	37.77	40.000	PASS
N78-3700-3800	30	40	DFT-QPSK	H	Outer_Full	35.623	37.840	PASS
N78-3700-3800	30	40	DFT-PI2BPSK	H	Outer_Full	35.708	38.160	PASS
N78-3700-3800	30	40	DFT-16QAM	H	Outer_Full	35.738	37.6	PASS
N78-3700-3800	30	40	DFT-64QAM	H	Outer_Full	35.77	38.080	PASS
N78-3700-3800	30	40	DFT-256QAM	H	Outer_Full	35.696	38.160	PASS
N78-3700-3800	30	40	CP-QPSK	H	Outer_Full	37.836	40.00	PASS
N78-3700-3800	30	40	CP-16QAM	H	Outer_Full	37.797	39.920	PASS
N78-3700-3800	30	40	CP-64QAM	H	Outer_Full	37.798	40.160	PASS
N78-3700-3800	30	40	CP-256QAM	H	Outer_Full	37.721	39.920	PASS
N78-3700-3800	30	50	DFT-QPSK	L	Outer_Full	45.683	48.300	PASS
N78-3700-3800	30	50	DFT-PI2BPSK	L	Outer_Full	45.606	48.300	PASS
N78-3700-3800	30	50	DFT-16QAM	L	Outer_Full	45.701	48.400	PASS
N78-3700-3800	30	50	DFT-64QAM	L	Outer_Full	45.742	48.400	PASS
N78-3700-3800	30	50	DFT-256QAM	L	Outer_Full	45.798	47.700	PASS
N78-3700-3800	30	50	CP-QPSK	L	Outer_Full	47.431	50.000	PASS
N78-3700-3800	30	50	CP-16QAM	L	Outer_Full	47.431	49.900	PASS
N78-3700-3800	30	50	CP-64QAM	L	Outer_Full	47.377	50.000	PASS
N78-3700-3800	30	50	CP-256QAM	L	Outer_Full	47.571	49.300	PASS
N78-3700-3800	30	50	DFT-QPSK	M	Outer_Full	45.703	48.400	PASS
N78-3700-3800	30	50	DFT-PI2BPSK	M	Outer_Full	45.665	48.700	PASS
N78-3700-3800	30	50	DFT-16QAM	M	Outer_Full	45.702	48.400	PASS
N78-3700-3800	30	50	DFT-64QAM	M	Outer_Full	45.762	48.600	PASS
N78-3700-3800	30	50	DFT-256QAM	M	Outer_Full	45.533	48.400	PASS
N78-3700-3800	30	50	CP-QPSK	M	Outer_Full	47.456	50.200	PASS
N78-3700-3800	30	50	CP-16QAM	M	Outer_Full	47.473	50.500	PASS
N78-3700-3800	30	50	CP-64QAM	M	Outer_Full	47.415	49.900	PASS
N78-3700-3800	30	50	CP-256QAM	M	Outer_Full	47.448	52.600	PASS
N78-3700-3800	30	50	DFT-QPSK	H	Outer_Full	45.662	48.400	PASS
N78-3700-3800	30	50	DFT-PI2BPSK	H	Outer_Full	45.599	48.400	PASS
N78-3700-3800	30	50	DFT-16QAM	H	Outer_Full	45.721	48.400	PASS



Unless otherwise agreed in writing, this document is issued by the Company subject to its General Conditions of Service printed overleaf, available on request or accessible at <http://www.sgs.com/en/Terms-and-Conditions.aspx> and, for electronic format documents, subject to Terms and Conditions for Electronic Documents at <http://www.sgs.com/en/Terms-and-Conditions/Terms-e-Documents.aspx>. Attention is drawn to the limitation of liability, indemnification and jurisdiction issues defined therein. Any holder of this document is advised that information contained hereon reflects the Company's findings at the time of its intervention only and within the limits of Client's instructions, if any. The Company's sole responsibility is to its Client and this document does not exonerate parties to a transaction from exercising all their rights and obligations under the transaction documents. This document cannot be reproduced except in full, without prior written approval of the Company. Any unauthorized alteration, forgery or falsification of the content or appearance of this document is unlawful and offenders may be prosecuted to the fullest extent of the law. Unless otherwise stated the results shown in this test report refer only to the sample(s) tested and such sample(s) are retained for 30 days only.

Attention: To check the authenticity of testing/inspection report & certificate, please contact us at telephone: (86-755) 8307 1443, or email: [CN.Doccheck@sgs.com](mailto:CN.Doccheck@sgs.com)

South of No. 6 Plant, No. 1, Runsheng Road, Suzhou Industrial Park, Suzhou Area, China (Jiangsu) Pilot Free Trade Zone 215000 t (86-512) 62992980 www.sgs.com.cn  
 中国·苏州·中国(江苏)自由贸易试验区苏州片区苏州工业园区润胜路1号的6号厂房南楼 邮编: 215000 t (86-512) 62992980 sgs.china@sgs.com

N78-3700-3800	30	50	DFT-64QAM	H	Outer_Full	45.725	48.300	PASS
N78-3700-3800	30	50	DFT-256QAM	H	Outer_Full	45.484	48.300	PASS
N78-3700-3800	30	50	CP-QPSK	H	Outer_Full	47.443	50.000	PASS
N78-3700-3800	30	50	CP-16QAM	H	Outer_Full	47.438	50.000	PASS
N78-3700-3800	30	50	CP-64QAM	H	Outer_Full	47.362	49.900	PASS
N78-3700-3800	30	50	CP-256QAM	H	Outer_Full	47.357	50.000	PASS
N78-3700-3800	30	60	DFT-QPSK	L	Outer_Full	57.654	60.240	PASS
N78-3700-3800	30	60	DFT-PI2BPSK	L	Outer_Full	57.751	60.240	PASS
N78-3700-3800	30	60	DFT-16QAM	L	Outer_Full	57.903	60.120	PASS
N78-3700-3800	30	60	DFT-64QAM	L	Outer_Full	57.719	60.600	PASS
N78-3700-3800	30	60	DFT-256QAM	L	Outer_Full	57.705	62.160	PASS
N78-3700-3800	30	60	CP-QPSK	L	Outer_Full	57.795	60.240	PASS
N78-3700-3800	30	60	CP-16QAM	L	Outer_Full	57.787	60.360	PASS
N78-3700-3800	30	60	CP-64QAM	L	Outer_Full	57.774	60.720	PASS
N78-3700-3800	30	60	CP-256QAM	L	Outer_Full	57.77	64.440	PASS
N78-3700-3800	30	60	DFT-QPSK	M	Outer_Full	57.713	60.240	PASS
N78-3700-3800	30	60	DFT-PI2BPSK	M	Outer_Full	57.792	60.240	PASS
N78-3700-3800	30	60	DFT-16QAM	M	Outer_Full	57.889	60.360	PASS
N78-3700-3800	30	60	DFT-64QAM	M	Outer_Full	57.746	60.720	PASS
N78-3700-3800	30	60	DFT-256QAM	M	Outer_Full	57.723	60.720	PASS
N78-3700-3800	30	60	DFT-16QAM	H	Outer_Full	57.901	60.240	PASS
N78-3700-3800	30	60	DFT-64QAM	H	Outer_Full	57.697	60.480	PASS
N78-3700-3800	30	60	DFT-256QAM	H	Outer_Full	57.682	60.480	PASS
N78-3700-3800	30	60	CP-QPSK	H	Outer_Full	57.801	60.120	PASS
N78-3700-3800	30	60	CP-16QAM	H	Outer_Full	57.79	60.240	PASS
N78-3700-3800	30	60	CP-64QAM	H	Outer_Full	57.781	60.240	PASS
N78-3700-3800	30	60	CP-256QAM	H	Outer_Full	57.652	63.240	PASS
N78-3700-3800	30	70	DFT-QPSK	L	Outer_Full	64.151	67.340	PASS
N78-3700-3800	30	70	DFT-PI2BPSK	L	Outer_Full	64.26	67.200	PASS
N78-3700-3800	30	70	DFT-16QAM	L	Outer_Full	64.145	67.620	PASS
N78-3700-3800	30	70	DFT-64QAM	L	Outer_Full	64.11	67.060	PASS
N78-3700-3800	30	70	DFT-256QAM	L	Outer_Full	64.218	67.340	PASS
N78-3700-3800	30	70	CP-QPSK	L	Outer_Full	67.468	70.700	PASS
N78-3700-3800	30	70	CP-16QAM	L	Outer_Full	67.435	70.420	PASS
N78-3700-3800	30	70	CP-64QAM	L	Outer_Full	67.431	70.420	PASS
N78-3700-3800	30	70	CP-256QAM	L	Outer_Full	67.392	70.140	PASS
N78-3700-3800	30	70	DFT-QPSK	M	Outer_Full	64.192	67.340	PASS
N78-3700-3800	30	70	DFT-PI2BPSK	M	Outer_Full	64.299	67.200	PASS



Unless otherwise agreed in writing, this document is issued by the Company subject to its General Conditions of Service printed overleaf, available on request or accessible at <http://www.sgs.com/en/Terms-and-Conditions.aspx> and, for electronic format documents, subject to Terms and Conditions for Electronic Documents at <http://www.sgs.com/en/Terms-and-Conditions/Terms-e-Documents.aspx>. Attention is drawn to the limitation of liability, indemnification and jurisdiction issues defined therein. Any holder of this document is advised that information contained hereon reflects the Company's findings at the time of its intervention only and within the limits of Client's instructions, if any. The Company's sole responsibility is to its Client and this document does not exonerate parties to a transaction from exercising all their rights and obligations under the transaction documents. This document cannot be reproduced except in full, without prior written approval of the Company. Any unauthorized alteration, forgery or falsification of the content or appearance of this document is unlawful and offenders may be prosecuted to the fullest extent of the law. Unless otherwise stated the results shown in this test report refer only to the sample(s) tested and such sample(s) are retained for 30 days only.

**Attention: To check the authenticity of testing/inspection report & certificate, please contact us at telephone: (86-755) 8307 1443, or email: CN.Doccheck@sgs.com**

South of No. 6 Plant, No. 1, Runsheng Road, Suzhou Industrial Park, Suzhou Area, China (Jiangsu) Pilot Free Trade Zone 215000 t (86-512) 62992980 www.sgs.com.cn  
 中国·苏州·中国(江苏)自由贸易试验区苏州片区苏州工业园区润胜路1号的6号厂房南楼 邮编: 215000 t (86-512) 62992980 sgs.china@sgs.com

N78-3700-3800	30	70	DFT-16QAM	M	Outer_Full	64.189	67.480	PASS
N78-3700-3800	30	70	DFT-64QAM	M	Outer_Full	64.231	67.480	PASS
N78-3700-3800	30	70	DFT-256QAM	M	Outer_Full	64.313	67.760	PASS
N78-3700-3800	30	70	CP-QPSK	M	Outer_Full	67.507	70.420	PASS
N78-3700-3800	30	70	CP-16QAM	M	Outer_Full	67.431	70.140	PASS
N78-3700-3800	30	70	CP-64QAM	M	Outer_Full	67.442	70.420	PASS
N78-3700-3800	30	70	CP-256QAM	M	Outer_Full	67.384	70.420	PASS
N78-3700-3800	30	70	DFT-QPSK	H	Outer_Full	64.142	67.340	PASS
N78-3700-3800	30	70	DFT-PI2BPSK	H	Outer_Full	64.217	67.200	PASS
N78-3700-3800	30	70	DFT-16QAM	H	Outer_Full	64.162	67.480	PASS
N78-3700-3800	30	70	DFT-64QAM	H	Outer_Full	64.197	67.480	PASS
N78-3700-3800	30	70	DFT-256QAM	H	Outer_Full	64.17	67.480	PASS
N78-3700-3800	30	70	CP-QPSK	H	Outer_Full	67.462	70.700	PASS
N78-3700-3800	30	70	CP-16QAM	H	Outer_Full	67.393	70.420	PASS
N78-3700-3800	30	70	CP-64QAM	H	Outer_Full	67.429	70.420	PASS
N78-3700-3800	30	70	CP-256QAM	H	Outer_Full	67.391	70.280	PASS
N78-3700-3800	30	80	DFT-QPSK	L	Outer_Full	77.107	80.640	PASS
N78-3700-3800	30	80	DFT-PI2BPSK	L	Outer_Full	77.096	80.480	PASS
N78-3700-3800	30	80	DFT-16QAM	L	Outer_Full	77.098	80.480	PASS
N78-3700-3800	30	80	DFT-64QAM	L	Outer_Full	76.963	80.960	PASS
N78-3700-3800	30	80	DFT-256QAM	L	Outer_Full	77.181	80.960	PASS
N78-3700-3800	30	80	CP-QPSK	L	Outer_Full	77.436	81.280	PASS
N78-3700-3800	30	80	CP-16QAM	L	Outer_Full	77.44	80.960	PASS
N78-3700-3800	30	80	CP-64QAM	L	Outer_Full	77.42	80.960	PASS
N78-3700-3800	30	80	CP-256QAM	L	Outer_Full	77.334	81.280	PASS
N78-3700-3800	30	80	DFT-QPSK	M	Outer_Full	77.041	80.480	PASS
N78-3700-3800	30	80	DFT-PI2BPSK	M	Outer_Full	77.079	80.480	PASS
N78-3700-3800	30	80	DFT-16QAM	M	Outer_Full	77.016	80.640	PASS
N78-3700-3800	30	80	DFT-64QAM	M	Outer_Full	76.959	81.600	PASS
N78-3700-3800	30	80	DFT-256QAM	M	Outer_Full	77.179	80.960	PASS
N78-3700-3800	30	80	CP-QPSK	M	Outer_Full	77.444	80.960	PASS
N78-3700-3800	30	80	CP-16QAM	M	Outer_Full	77.422	80.960	PASS
N78-3700-3800	30	80	CP-64QAM	M	Outer_Full	77.404	81.120	PASS
N78-3700-3800	30	80	CP-256QAM	M	Outer_Full	77.361	81.440	PASS
N78-3700-3800	30	80	DFT-QPSK	H	Outer_Full	77.046	80.480	PASS
N78-3700-3800	30	80	DFT-PI2BPSK	H	Outer_Full	77.024	80.480	PASS
N78-3700-3800	30	80	DFT-16QAM	H	Outer_Full	77.051	80.640	PASS
N78-3700-3800	30	80	DFT-64QAM	H	Outer_Full	76.872	81.600	PASS



Unless otherwise agreed in writing, this document is issued by the Company subject to its General Conditions of Service printed overleaf, available on request or accessible at <http://www.sgs.com/en/Terms-and-Conditions.aspx> and, for electronic format documents, subject to Terms and Conditions for Electronic Documents at <http://www.sgs.com/en/Terms-and-Conditions/Terms-e-Documents.aspx>. Attention is drawn to the limitation of liability, indemnification and jurisdiction issues defined therein. Any holder of this document is advised that information contained hereon reflects the Company's findings at the time of its intervention only and within the limits of Client's instructions, if any. The Company's sole responsibility is to its Client and this document does not exonerate parties to a transaction from exercising all their rights and obligations under the transaction documents. This document cannot be reproduced except in full, without prior written approval of the Company. Any unauthorized alteration, forgery or falsification of the content or appearance of this document is unlawful and offenders may be prosecuted to the fullest extent of the law. Unless otherwise stated the results shown in this test report refer only to the sample(s) tested and such sample(s) are retained for 30 days only.

Attention: To check the authenticity of testing/inspection report & certificate, please contact us at telephone: (86-755) 8307 1443, or email: [CN.Doccheck@sgs.com](mailto:CN.Doccheck@sgs.com)

South of No. 6 Plant, No. 1, Runsheng Road, Suzhou Industrial Park, Suzhou Area, China (Jiangsu) Pilot Free Trade Zone 215000 t (86-512) 62992980 www.sgs.com.cn  
 中国·苏州·中国(江苏)自由贸易试验区苏州片区苏州工业园区润胜路1号的6号厂房南楼 邮编: 215000 t (86-512) 62992980 sgs.china@sgs.com



Report No.: SEWM2306000194RG02

Rev.: 01

Page: 31 of 159

N78-3700-3800	30	80	DFT-256QAM	H	Outer_Full	77.005	80.640	PASS
N78-3700-3800	30	80	CP-QPSK	H	Outer_Full	77.393	81.280	PASS
N78-3700-3800	30	80	CP-16QAM	H	Outer_Full	77.398	80.960	PASS
N78-3700-3800	30	80	CP-64QAM	H	Outer_Full	77.4	80.960	PASS
N78-3700-3800	30	80	CP-256QAM	H	Outer_Full	77.283	81.120	PASS
N78-3700-3800	30	90	DFT-QPSK	L	Outer_Full	85.501	89.820	PASS
N78-3700-3800	30	90	DFT-PI2BPSK	L	Outer_Full	85.593	89.640	PASS
N78-3700-3800	30	90	DFT-16QAM	L	Outer_Full	85.517	89.460	PASS
N78-3700-3800	30	90	DFT-64QAM	L	Outer_Full	85.507	89.460	PASS
N78-3700-3800	30	90	DFT-256QAM	L	Outer_Full	85.587	89.640	PASS
N78-3700-3800	30	90	CP-QPSK	L	Outer_Full	87.247	90.720	PASS
N78-3700-3800	30	90	CP-16QAM	L	Outer_Full	87.445	91.440	PASS
N78-3700-3800	30	90	CP-64QAM	L	Outer_Full	87.414	90.900	PASS
N78-3700-3800	30	90	CP-256QAM	L	Outer_Full	87.169	91.260	PASS
N78-3700-3800	30	90	DFT-QPSK	M	Outer_Full	85.541	89.460	PASS
N78-3700-3800	30	90	DFT-PI2BPSK	M	Outer_Full	85.583	89.640	PASS
N78-3700-3800	30	90	DFT-16QAM	M	Outer_Full	85.485	89.460	PASS
N78-3700-3800	30	90	DFT-64QAM	M	Outer_Full	85.474	89.640	PASS
N78-3700-3800	30	90	DFT-256QAM	M	Outer_Full	85.576	89.460	PASS
N78-3700-3800	30	90	CP-QPSK	M	Outer_Full	87.252	91.080	PASS
N78-3700-3800	30	90	CP-16QAM	M	Outer_Full	87.441	91.260	PASS
N78-3700-3800	30	90	CP-64QAM	M	Outer_Full	87.42	90.900	PASS
N78-3700-3800	30	90	CP-256QAM	M	Outer_Full	87.13	91.080	PASS
N78-3700-3800	30	90	DFT-QPSK	H	Outer_Full	85.504	89.460	PASS
N78-3700-3800	30	90	DFT-PI2BPSK	H	Outer_Full	85.524	89.460	PASS
N78-3700-3800	30	90	DFT-16QAM	H	Outer_Full	85.848	89.46	PASS
N78-3700-3800	30	90	DFT-64QAM	H	Outer_Full	85.442	89.640	PASS
N78-3700-3800	30	90	DFT-256QAM	H	Outer_Full	85.529	89.280	PASS
N78-3700-3800	30	90	CP-QPSK	H	Outer_Full	87.265	90.900	PASS
N78-3700-3800	30	90	CP-16QAM	H	Outer_Full	87.425	91.440	PASS
N78-3700-3800	30	90	CP-64QAM	H	Outer_Full	87.471	91.080	PASS
N78-3700-3800	30	90	CP-256QAM	H	Outer_Full	87.177	91.080	PASS
N78-3700-3800	30	100	DFT-QPSK	L	Outer_Full	96.402	100.200	PASS
N78-3700-3800	30	100	DFT-PI2BPSK	L	Outer_Full	96.05	100.200	PASS
N78-3700-3800	30	100	DFT-16QAM	L	Outer_Full	96.302	100.600	PASS
N78-3700-3800	30	100	DFT-64QAM	L	Outer_Full	96.067	100.200	PASS
N78-3700-3800	30	100	DFT-256QAM	L	Outer_Full	96.252	100.000	PASS
N78-3700-3800	30	100	CP-QPSK	L	Outer_Full	97.411	101.000	PASS



Unless otherwise agreed in writing, this document is issued by the Company subject to its General Conditions of Service printed overleaf, available on request or accessible at <http://www.sgs.com/en/Terms-and-Conditions.aspx> and, for electronic format documents, subject to Terms and Conditions for Electronic Documents at <http://www.sgs.com/en/Terms-and-Conditions/Terms-e-Documents.aspx>. Attention is drawn to the limitation of liability, indemnification and jurisdiction issues defined therein. Any holder of this document is advised that information contained hereon reflects the Company's findings at the time of its intervention only and within the limits of Client's instructions, if any. The Company's sole responsibility is to its Client and this document does not exonerate parties to a transaction from exercising all their rights and obligations under the transaction documents. This document cannot be reproduced except in full, without prior written approval of the Company. Any unauthorized alteration, forgery or falsification of the content or appearance of this document is unlawful and offenders may be prosecuted to the fullest extent of the law. Unless otherwise stated the results shown in this test report refer only to the sample(s) tested and such sample(s) are retained for 30 days only.

Attention: To check the authenticity of testing/inspection report & certificate, please contact us at telephone: (86-755) 8307 1443, or email: [CN.Doccheck@sgs.com](mailto:CN.Doccheck@sgs.com)

South of No. 6 Plant, No. 1, Runsheng Road, Suzhou Industrial Park, Suzhou Area, China (Jiangsu) Pilot Free Trade Zone 215000 t (86-512) 62992980 www.sgs.com.cn  
 中国·苏州·中国(江苏)自由贸易试验区苏州片区苏州工业园区润胜路1号的6号厂房南楼 邮编: 215000 t (86-512) 62992980 sgs.china@sgs.com