

Report No.: SEWM2306000194RG02

Rev.: 01

Page: 1 of 160

Appendix B.32

NR Band n78(3450-3550)



Unless otherwise agreed in writing, this document is issued by the Company subject to its General Conditions of Service printed overleaf, available on request or accessible at <http://www.sgs.com/en/Terms-and-Conditions.aspx> and, for electronic format documents, subject to Terms and Conditions for Electronic Documents at <http://www.sgs.com/en/Terms-and-Conditions/Terms-e-Documents.aspx>. Attention is drawn to the limitation of liability, indemnification and jurisdiction issues defined therein. Any holder of this document is advised that information contained hereon reflects the Company's findings at the time of its intervention only and within the limits of Client's instructions, if any. The Company's sole responsibility is to its Client and this document does not exonerate parties to a transaction from exercising all their rights and obligations under the transaction documents. This document cannot be reproduced except in full, without prior written approval of the Company. Any unauthorized alteration, forgery or falsification of the content or appearance of this document is unlawful and offenders may be prosecuted to the fullest extent of the law. Unless otherwise stated the results shown in this test report refer only to the sample(s) tested and such sample(s) are retained for 30 days only.
Attention: To check the authenticity of testing / inspection report & certificate, please contact us at telephone: (86-755) 8307 1443, or email: CN.Doccheck@sgs.com

South of No. 6 Plant, No. 1, Runsheng Road, Suzhou Industrial Park, Suzhou Area, China (Jiangsu) Pilot Free Trade Zone 215000
中国·苏州·中国(江苏)自由贸易试验区苏州片区苏州工业园区润胜路1号的6号厂房南面 邮编: 215000

t (86-512) 62992980 www.sgs.com.cn
t (86-512) 62992980 sgs.china@sgs.com

Effective (Isotropic) Radiated Power Output Data for SA

Test Result

Ant21:

Band	SCS	Band width	Modulation	Chan nel	RB Config	Power (dBm)	EIRP (dBm)	Limit	Verdict
N78-3450-3550	30	10	DFT-PI2BPSK	L	Inner_1RB_Left	24.13	26.13	30	PASS
N78-3450-3550	30	10	DFT-PI2BPSK	L	Inner_1RB_Right	23.87	25.87	30	PASS
N78-3450-3550	30	10	DFT-PI2BPSK	L	Outer_Full	22.56	24.56	30	PASS
N78-3450-3550	30	10	DFT-QPSK	L	Inner_1RB_Left	24.12	26.12	30	PASS
N78-3450-3550	30	10	DFT-QPSK	L	Inner_1RB_Right	23.69	25.69	30	PASS
N78-3450-3550	30	10	DFT-QPSK	L	Outer_Full	22.12	24.12	30	PASS
N78-3450-3550	30	10	DFT-16QAM	L	Inner_1RB_Left	22.69	24.69	30	PASS
N78-3450-3550	30	10	DFT-16QAM	L	Inner_1RB_Right	22.71	24.71	30	PASS
N78-3450-3550	30	10	DFT-16QAM	L	Outer_Full	21.09	23.09	30	PASS
N78-3450-3550	30	10	DFT-64QAM	L	Inner_1RB_Left	21.05	23.05	30	PASS
N78-3450-3550	30	10	DFT-64QAM	L	Inner_1RB_Right	20.98	22.98	30	PASS
N78-3450-3550	30	10	DFT-64QAM	L	Outer_Full	20.43	22.43	30	PASS
N78-3450-3550	30	10	DFT-256QAM	L	Inner_1RB_Left	18.57	20.57	30	PASS
N78-3450-3550	30	10	DFT-256QAM	L	Inner_1RB_Right	18.28	20.28	30	PASS
N78-3450-3550	30	10	DFT-256QAM	L	Outer_Full	18.44	20.44	30	PASS
N78-3450-3550	30	10	DFT-PI2BPSK	M	Inner_1RB_Left	23.61	25.61	30	PASS
N78-3450-3550	30	10	DFT-PI2BPSK	M	Inner_1RB_Right	23.41	25.41	30	PASS
N78-3450-3550	30	10	DFT-PI2BPSK	M	Outer_Full	22.02	24.02	30	PASS
N78-3450-3550	30	10	DFT-QPSK	M	Inner_1RB_Left	23.44	25.44	30	PASS
N78-3450-3550	30	10	DFT-QPSK	M	Inner_1RB_Right	23.61	25.61	30	PASS
N78-3450-3550	30	10	DFT-QPSK	M	Outer_Full	21.64	23.64	30	PASS
N78-3450-3550	30	10	DFT-16QAM	M	Inner_1RB_Left	22.78	24.78	30	PASS
N78-3450-3550	30	10	DFT-16QAM	M	Inner_1RB_Right	22.51	24.51	30	PASS
N78-3450-3550	30	10	DFT-16QAM	M	Outer_Full	20.75	22.75	30	PASS
N78-3450-3550	30	10	DFT-64QAM	M	Inner_1RB_Left	20.43	22.43	30	PASS
N78-3450-3550	30	10	DFT-64QAM	M	Inner_1RB_Right	20.53	22.53	30	PASS
N78-3450-3550	30	10	DFT-64QAM	M	Outer_Full	20.34	22.34	30	PASS
N78-3450-3550	30	10	DFT-256QAM	M	Inner_1RB_Left	18.15	20.15	30	PASS
N78-3450-3550	30	10	DFT-256QAM	M	Inner_1RB_Right	17.88	19.88	30	PASS
N78-3450-3550	30	10	DFT-256QAM	M	Outer_Full	18.08	20.08	30	PASS



Unless otherwise agreed in writing, this document is issued by the Company subject to its General Conditions of Service printed overleaf, available on request or accessible at <http://www.sgs.com/en/Terms-and-Conditions.aspx> and, for electronic format documents, subject to Terms and Conditions for Electronic Documents at <http://www.sgs.com/en/Terms-and-Conditions/Terms-e-Documents.aspx>. Attention is drawn to the limitation of liability, indemnification and jurisdiction issues defined therein. Any holder of this document is advised that information contained herein reflects the Company's findings at the time of its intervention only and within the limits of Client's instructions, if any. The Company's sole responsibility is to its Client and this document does not exonerate parties to a transaction from exercising all their rights and obligations under the transaction documents. This document cannot be reproduced except in full, without prior written approval of the Company. Any unauthorized alteration, forgery or falsification of the content or appearance of this document is unlawful and offenders may be prosecuted to the fullest extent of the law. Unless otherwise stated the results shown in this test report refer only to the sample(s) tested and such sample(s) are retained for 30 days only.

Attention: To check the authenticity of testing / inspection report & certificate, please contact us at telephone: (86-755) 8307 1443, or email: CN.Doccheck@sgs.com

South of No. 6 Plant, No. 1, Runsheng Road, Suzhou Industrial Park, Suzhou Area, China (Jiangsu) Pilot Free Trade Zone 215000

t (86-512) 62992980 www.sgs.com.cn

中国·苏州·中国(江苏)自由贸易试验区苏州片区苏州工业园区润胜路1号的6号厂房南楼 邮编: 215000

t (86-512) 62992980 sgs.china@sgs.com

Report No.: SEWM2306000194RG02

Rev.: 01

Page: 3 of 160

N78-3450-3550	30	10	DFT-PI2BPSK	H	Inner_1RB_Left	23.11	25.11	30	PASS
N78-3450-3550	30	10	DFT-PI2BPSK	H	Inner_1RB_Right	22.98	24.98	30	PASS
N78-3450-3550	30	10	DFT-PI2BPSK	H	Outer_Full	21.33	23.33	30	PASS
N78-3450-3550	30	10	DFT-QPSK	H	Inner_1RB_Left	23.21	25.21	30	PASS
N78-3450-3550	30	10	DFT-QPSK	H	Inner_1RB_Right	23.02	25.02	30	PASS
N78-3450-3550	30	10	DFT-QPSK	H	Outer_Full	20.97	22.97	30	PASS
N78-3450-3550	30	10	DFT-16QAM	H	Inner_1RB_Left	22.12	24.12	30	PASS
N78-3450-3550	30	10	DFT-16QAM	H	Inner_1RB_Right	21.71	23.71	30	PASS
N78-3450-3550	30	10	DFT-16QAM	H	Outer_Full	19.97	21.97	30	PASS
N78-3450-3550	30	10	DFT-64QAM	H	Inner_1RB_Left	20.23	22.23	30	PASS
N78-3450-3550	30	10	DFT-64QAM	H	Inner_1RB_Right	19.94	21.94	30	PASS
N78-3450-3550	30	10	DFT-64QAM	H	Outer_Full	19.72	21.72	30	PASS
N78-3450-3550	30	10	DFT-256QAM	H	Inner_1RB_Left	17.48	19.48	30	PASS
N78-3450-3550	30	10	DFT-256QAM	H	Inner_1RB_Right	17.34	19.34	30	PASS
N78-3450-3550	30	10	DFT-256QAM	H	Outer_Full	17.37	19.37	30	PASS
N78-3450-3550	30	15	DFT-PI2BPSK	L	Inner_1RB_Left	23.94	25.94	30	PASS
N78-3450-3550	30	15	DFT-PI2BPSK	L	Inner_1RB_Right	23.95	25.95	30	PASS
N78-3450-3550	30	15	DFT-PI2BPSK	L	Outer_Full	22.50	24.50	30	PASS
N78-3450-3550	30	15	DFT-QPSK	L	Inner_1RB_Left	24.19	26.19	30	PASS
N78-3450-3550	30	15	DFT-QPSK	L	Inner_1RB_Right	23.85	25.85	30	PASS
N78-3450-3550	30	15	DFT-QPSK	L	Outer_Full	21.87	23.87	30	PASS
N78-3450-3550	30	15	DFT-16QAM	L	Inner_1RB_Left	22.98	24.98	30	PASS
N78-3450-3550	30	15	DFT-16QAM	L	Inner_1RB_Right	22.66	24.66	30	PASS
N78-3450-3550	30	15	DFT-16QAM	L	Outer_Full	20.90	22.90	30	PASS
N78-3450-3550	30	15	DFT-64QAM	L	Inner_1RB_Left	20.96	22.96	30	PASS
N78-3450-3550	30	15	DFT-64QAM	L	Inner_1RB_Right	20.94	22.94	30	PASS
N78-3450-3550	30	15	DFT-64QAM	L	Outer_Full	20.46	22.46	30	PASS
N78-3450-3550	30	15	DFT-256QAM	L	Inner_1RB_Left	18.38	20.38	30	PASS
N78-3450-3550	30	15	DFT-256QAM	L	Inner_1RB_Right	18.07	20.07	30	PASS
N78-3450-3550	30	15	DFT-256QAM	L	Outer_Full	18.64	20.64	30	PASS
N78-3450-3550	30	15	DFT-PI2BPSK	M	Inner_1RB_Left	23.95	25.95	30	PASS
N78-3450-3550	30	15	DFT-PI2BPSK	M	Inner_1RB_Right	23.58	25.58	30	PASS
N78-3450-3550	30	15	DFT-PI2BPSK	M	Outer_Full	22.07	24.07	30	PASS
N78-3450-3550	30	15	DFT-QPSK	M	Inner_1RB_Left	23.94	25.94	30	PASS
N78-3450-3550	30	15	DFT-QPSK	M	Inner_1RB_Right	23.62	25.62	30	PASS
N78-3450-3550	30	15	DFT-QPSK	M	Outer_Full	21.92	23.92	30	PASS
N78-3450-3550	30	15	DFT-16QAM	M	Inner_1RB_Left	22.93	24.93	30	PASS



Unless otherwise agreed in writing, this document is issued by the Company subject to its General Conditions of Service printed overleaf, available on request or accessible at <http://www.sgs.com/en/Terms-and-Conditions.aspx> and, for electronic format documents, subject to Terms and Conditions for Electronic Documents at <http://www.sgs.com/en/Terms-and-Conditions/Terms-e-Documents.aspx>. Attention is drawn to the limitation of liability, indemnification and jurisdiction issues defined therein. Any holder of this document is advised that information contained hereon reflects the Company's findings at the time of its intervention only and within the limits of Client's instructions, if any. The Company's sole responsibility is to its Client and this document does not exonerate parties to a transaction from exercising all their rights and obligations under the transaction documents. This document cannot be reproduced except in full, without prior written approval of the Company. Any unauthorized alteration, forgery or falsification of the content or appearance of this document is unlawful and offenders may be prosecuted to the fullest extent of the law. Unless otherwise stated the results shown in this test report refer only to the sample(s) tested and such sample(s) are retained for 30 days only.

Attention: To check the authenticity of testing/inspection report & certificate, please contact us at telephone: (86-755) 8307 1443, or email: CN.Doccheck@sgs.com

South of No. 6 Plant, No. 1, Runsheng Road, Suzhou Industrial Park, Suzhou Area, China (Jiangsu) Pilot Free Trade Zone 215000

中国·苏州·中国(江苏)自由贸易试验区苏州片区苏州工业园区润胜路1号的6号厂房南楼 邮编: 215000

t (86-512) 62992980 www.sgs.com.cn

t (86-512) 62992980 sgs.china@sgs.com



Report No.: SEWM2306000194RG02

Rev.: 01

Page: 4 of 160

N78-3450-3550	30	15	DFT-16QAM	M	Inner_1RB_Right	22.57	24.57	30	PASS
N78-3450-3550	30	15	DFT-16QAM	M	Outer_Full	21.01	23.01	30	PASS
N78-3450-3550	30	15	DFT-64QAM	M	Inner_1RB_Left	20.49	22.49	30	PASS
N78-3450-3550	30	15	DFT-64QAM	M	Inner_1RB_Right	20.76	22.76	30	PASS
N78-3450-3550	30	15	DFT-64QAM	M	Outer_Full	20.10	22.10	30	PASS
N78-3450-3550	30	15	DFT-256QAM	M	Inner_1RB_Left	18.21	20.21	30	PASS
N78-3450-3550	30	15	DFT-256QAM	M	Inner_1RB_Right	17.88	19.88	30	PASS
N78-3450-3550	30	15	DFT-256QAM	M	Outer_Full	18.44	20.44	30	PASS
N78-3450-3550	30	15	DFT-PI2BPSK	H	Inner_1RB_Left	23.29	25.29	30	PASS
N78-3450-3550	30	15	DFT-PI2BPSK	H	Inner_1RB_Right	22.84	24.84	30	PASS
N78-3450-3550	30	15	DFT-PI2BPSK	H	Outer_Full	21.87	23.87	30	PASS
N78-3450-3550	30	15	DFT-QPSK	H	Inner_1RB_Left	23.19	25.19	30	PASS
N78-3450-3550	30	15	DFT-QPSK	H	Inner_1RB_Right	23.02	25.02	30	PASS
N78-3450-3550	30	15	DFT-QPSK	H	Outer_Full	21.15	23.15	30	PASS
N78-3450-3550	30	15	DFT-16QAM	H	Inner_1RB_Left	22.42	24.42	30	PASS
N78-3450-3550	30	15	DFT-16QAM	H	Inner_1RB_Right	21.70	23.70	30	PASS
N78-3450-3550	30	15	DFT-16QAM	H	Outer_Full	20.34	22.34	30	PASS
N78-3450-3550	30	15	DFT-64QAM	H	Inner_1RB_Left	20.07	22.07	30	PASS
N78-3450-3550	30	15	DFT-64QAM	H	Inner_1RB_Right	19.95	21.95	30	PASS
N78-3450-3550	30	15	DFT-64QAM	H	Outer_Full	19.85	21.85	30	PASS
N78-3450-3550	30	15	DFT-256QAM	H	Inner_1RB_Left	17.94	19.94	30	PASS
N78-3450-3550	30	15	DFT-256QAM	H	Inner_1RB_Right	17.37	19.37	30	PASS
N78-3450-3550	30	15	DFT-256QAM	H	Outer_Full	17.61	19.61	30	PASS
N78-3450-3550	30	20	DFT-PI2BPSK	L	Inner_1RB_Left	24.04	26.04	30	PASS
N78-3450-3550	30	20	DFT-PI2BPSK	L	Inner_1RB_Right	23.55	25.55	30	PASS
N78-3450-3550	30	20	DFT-PI2BPSK	L	Outer_Full	22.44	24.44	30	PASS
N78-3450-3550	30	20	DFT-QPSK	L	Inner_1RB_Left	24.01	26.01	30	PASS
N78-3450-3550	30	20	DFT-QPSK	L	Inner_1RB_Right	23.59	25.59	30	PASS
N78-3450-3550	30	20	DFT-QPSK	L	Outer_Full	22.74	24.74	30	PASS
N78-3450-3550	30	20	DFT-16QAM	L	Inner_1RB_Left	21.46	23.46	30	PASS
N78-3450-3550	30	20	DFT-16QAM	L	Inner_1RB_Right	21.51	23.51	30	PASS
N78-3450-3550	30	20	DFT-16QAM	L	Outer_Full	21.57	23.57	30	PASS
N78-3450-3550	30	20	DFT-64QAM	L	Inner_1RB_Left	20.42	22.42	30	PASS
N78-3450-3550	30	20	DFT-64QAM	L	Inner_1RB_Right	20.71	22.71	30	PASS
N78-3450-3550	30	20	DFT-64QAM	L	Outer_Full	20.49	22.49	30	PASS
N78-3450-3550	30	20	DFT-256QAM	L	Inner_1RB_Left	18.60	20.60	30	PASS
N78-3450-3550	30	20	DFT-256QAM	L	Inner_1RB_Right	18.35	20.35	30	PASS



Unless otherwise agreed in writing, this document is issued by the Company subject to its General Conditions of Service printed overleaf, available on request or accessible at <http://www.sgs.com/en/Terms-and-Conditions.aspx> and, for electronic format documents, subject to Terms and Conditions for Electronic Documents at <http://www.sgs.com/en/Terms-and-Conditions/Terms-e-Documents.aspx>. Attention is drawn to the limitation of liability, indemnification and jurisdiction issues defined therein. Any holder of this document is advised that information contained herein reflects the Company's findings at the time of its intervention only and within the limits of Client's instructions, if any. The Company's sole responsibility is to its Client and this document does not exonerate parties to a transaction from exercising all their rights and obligations under the transaction documents. This document cannot be reproduced except in full, without prior written approval of the Company. Any unauthorized alteration, forgery or falsification of the content or appearance of this document is unlawful and offenders may be prosecuted to the fullest extent of the law. Unless otherwise stated the results shown in this test report refer only to the sample(s) tested and such sample(s) are retained for 30 days only.

Attention: To check the authenticity of testing/inspection report & certificate, please contact us at telephone: (86-755) 8307 1443, or email: CN.Doccheck@sgs.com
 South of No. 6 Plant, No. 1, Runsheng Road, Suzhou Industrial Park, Suzhou Area, China (Jiangsu) Pilot Free Trade Zone 215000 t (86-512) 62992980 www.sgsgroup.com.cn
 中国·苏州·中国 (江苏) 自由贸易试验区苏州片区苏州工业园区润胜路1号的6号厂房南楼 邮编: 215000 t (86-512) 62992980 sgs.china@sgs.com

N78-3450-3550	30	20	DFT-256QAM	L	Outer_Full	18.17	20.17	30	PASS
N78-3450-3550	30	20	DFT-PI2BPSK	M	Inner_1RB_Left	24.00	26.00	30	PASS
N78-3450-3550	30	20	DFT-PI2BPSK	M	Inner_1RB_Right	23.28	25.28	30	PASS
N78-3450-3550	30	20	DFT-PI2BPSK	M	Outer_Full	22.27	24.27	30	PASS
N78-3450-3550	30	20	DFT-QPSK	M	Inner_1RB_Left	23.13	25.13	30	PASS
N78-3450-3550	30	20	DFT-QPSK	M	Inner_1RB_Right	23.56	25.56	30	PASS
N78-3450-3550	30	20	DFT-QPSK	M	Outer_Full	21.46	23.46	30	PASS
N78-3450-3550	30	20	DFT-16QAM	M	Inner_1RB_Left	22.70	24.70	30	PASS
N78-3450-3550	30	20	DFT-16QAM	M	Inner_1RB_Right	22.24	24.24	30	PASS
N78-3450-3550	30	20	DFT-16QAM	M	Outer_Full	20.52	22.52	30	PASS
N78-3450-3550	30	20	DFT-64QAM	M	Inner_1RB_Left	20.87	22.87	30	PASS
N78-3450-3550	30	20	DFT-64QAM	M	Inner_1RB_Right	20.29	22.29	30	PASS
N78-3450-3550	30	20	DFT-64QAM	M	Outer_Full	19.88	21.88	30	PASS
N78-3450-3550	30	20	DFT-256QAM	M	Inner_1RB_Left	18.14	20.14	30	PASS
N78-3450-3550	30	20	DFT-256QAM	M	Inner_1RB_Right	18.11	20.11	30	PASS
N78-3450-3550	30	20	DFT-256QAM	M	Outer_Full	18.21	20.21	30	PASS
N78-3450-3550	30	20	DFT-PI2BPSK	H	Inner_1RB_Left	23.25	25.25	30	PASS
N78-3450-3550	30	20	DFT-PI2BPSK	H	Inner_1RB_Right	23.14	25.14	30	PASS
N78-3450-3550	30	20	DFT-PI2BPSK	H	Outer_Full	21.64	23.64	30	PASS
N78-3450-3550	30	20	DFT-QPSK	H	Inner_1RB_Left	23.49	25.49	30	PASS
N78-3450-3550	30	20	DFT-QPSK	H	Inner_1RB_Right	22.74	24.74	30	PASS
N78-3450-3550	30	20	DFT-QPSK	H	Outer_Full	21.21	23.21	30	PASS
N78-3450-3550	30	20	DFT-16QAM	H	Inner_1RB_Left	22.52	24.52	30	PASS
N78-3450-3550	30	20	DFT-16QAM	H	Inner_1RB_Right	21.88	23.88	30	PASS
N78-3450-3550	30	20	DFT-16QAM	H	Outer_Full	20.01	22.01	30	PASS
N78-3450-3550	30	20	DFT-64QAM	H	Inner_1RB_Left	20.29	22.29	30	PASS
N78-3450-3550	30	20	DFT-64QAM	H	Inner_1RB_Right	20.04	22.04	30	PASS
N78-3450-3550	30	20	DFT-64QAM	H	Outer_Full	19.56	21.56	30	PASS
N78-3450-3550	30	20	DFT-256QAM	H	Inner_1RB_Left	17.98	19.98	30	PASS
N78-3450-3550	30	20	DFT-256QAM	H	Inner_1RB_Right	17.55	19.55	30	PASS
N78-3450-3550	30	20	DFT-256QAM	H	Outer_Full	17.33	19.33	30	PASS
N78-3450-3550	30	25	DFT-PI2BPSK	L	Inner_1RB_Left	23.90	25.90	30	PASS
N78-3450-3550	30	25	DFT-PI2BPSK	L	Inner_1RB_Right	23.85	25.85	30	PASS
N78-3450-3550	30	25	DFT-PI2BPSK	L	Outer_Full	22.26	24.26	30	PASS
N78-3450-3550	30	25	DFT-QPSK	L	Inner_1RB_Left	23.75	25.75	30	PASS
N78-3450-3550	30	25	DFT-QPSK	L	Inner_1RB_Right	23.82	25.82	30	PASS
N78-3450-3550	30	25	DFT-QPSK	L	Outer_Full	22.06	24.06	30	PASS



Unless otherwise agreed in writing, this document is issued by the Company subject to its General Conditions of Service printed overleaf, available on request or accessible at <http://www.sgs.com/en/Terms-and-Conditions.aspx> and, for electronic format documents, subject to Terms and Conditions for Electronic Documents at <http://www.sgs.com/en/Terms-and-Conditions/Terms-e-Documents.aspx>. Attention is drawn to the limitation of liability, indemnification and jurisdiction issues defined therein. Any holder of this document is advised that information contained herein reflects the Company's findings at the time of its intervention only and within the limits of Client's instructions, if any. The Company's sole responsibility is to its Client and this document does not exonerate parties to a transaction from exercising all their rights and obligations under the transaction documents. This document cannot be reproduced except in full, without prior written approval of the Company. Any unauthorized alteration, forgery or falsification of the content or appearance of this document is unlawful and offenders may be prosecuted to the fullest extent of the law. Unless otherwise stated the results shown in this test report refer only to the sample(s) tested and such sample(s) are retained for 30 days only.

Attention: To check the authenticity of testing/inspection report & certificate, please contact us at telephone: (86-755) 8307 1443, or email: CN.Doccheck@sgs.com
 South of No. 6 Plant, No. 1, Runsheng Road, Suzhou Industrial Park, Suzhou Area, China (Jiangsu) Pilot Free Trade Zone 215000 t (86-512) 62992980 www.sgsgroup.com.cn
 中国·苏州·中国 (江苏) 自由贸易试验区苏州片区苏州工业园区润胜路1号的6号厂房南楼 邮编: 215000 t (86-512) 62992980 sgs.china@sgs.com



Report No.: SEWM2306000194RG02

Rev.: 01

Page: 6 of 160

N78-3450-3550	30	25	DFT-16QAM	L	Inner_1RB_Left	22.75	24.75	30	PASS
N78-3450-3550	30	25	DFT-16QAM	L	Inner_1RB_Right	22.70	24.70	30	PASS
N78-3450-3550	30	25	DFT-16QAM	L	Outer_Full	20.76	22.76	30	PASS
N78-3450-3550	30	25	DFT-64QAM	L	Inner_1RB_Left	20.85	22.85	30	PASS
N78-3450-3550	30	25	DFT-64QAM	L	Inner_1RB_Right	20.72	22.72	30	PASS
N78-3450-3550	30	25	DFT-64QAM	L	Outer_Full	20.29	22.29	30	PASS
N78-3450-3550	30	25	DFT-256QAM	L	Inner_1RB_Left	18.47	20.47	30	PASS
N78-3450-3550	30	25	DFT-256QAM	L	Inner_1RB_Right	18.38	20.38	30	PASS
N78-3450-3550	30	25	DFT-256QAM	L	Outer_Full	18.40	20.40	30	PASS
N78-3450-3550	30	25	DFT-PI2BPSK	M	Inner_1RB_Left	23.83	25.83	30	PASS
N78-3450-3550	30	25	DFT-PI2BPSK	M	Inner_1RB_Right	23.58	25.58	30	PASS
N78-3450-3550	30	25	DFT-PI2BPSK	M	Outer_Full	22.12	24.12	30	PASS
N78-3450-3550	30	25	DFT-QPSK	M	Inner_1RB_Left	23.49	25.49	30	PASS
N78-3450-3550	30	25	DFT-QPSK	M	Inner_1RB_Right	23.76	25.76	30	PASS
N78-3450-3550	30	25	DFT-QPSK	M	Outer_Full	21.84	23.84	30	PASS
N78-3450-3550	30	25	DFT-16QAM	M	Inner_1RB_Left	22.47	24.47	30	PASS
N78-3450-3550	30	25	DFT-16QAM	M	Inner_1RB_Right	22.35	24.35	30	PASS
N78-3450-3550	30	25	DFT-16QAM	M	Outer_Full	20.54	22.54	30	PASS
N78-3450-3550	30	25	DFT-64QAM	M	Inner_1RB_Left	20.33	22.33	30	PASS
N78-3450-3550	30	25	DFT-64QAM	M	Inner_1RB_Right	20.42	22.42	30	PASS
N78-3450-3550	30	25	DFT-64QAM	M	Outer_Full	20.41	22.41	30	PASS
N78-3450-3550	30	25	DFT-256QAM	M	Inner_1RB_Left	18.14	20.14	30	PASS
N78-3450-3550	30	25	DFT-256QAM	M	Inner_1RB_Right	17.76	19.76	30	PASS
N78-3450-3550	30	25	DFT-256QAM	M	Outer_Full	18.30	20.30	30	PASS
N78-3450-3550	30	25	DFT-PI2BPSK	H	Inner_1RB_Left	23.04	25.04	30	PASS
N78-3450-3550	30	25	DFT-PI2BPSK	H	Inner_1RB_Right	22.92	24.92	30	PASS
N78-3450-3550	30	25	DFT-PI2BPSK	H	Outer_Full	21.34	23.34	30	PASS
N78-3450-3550	30	25	DFT-QPSK	H	Inner_1RB_Left	23.08	25.08	30	PASS
N78-3450-3550	30	25	DFT-QPSK	H	Inner_1RB_Right	22.90	24.90	30	PASS
N78-3450-3550	30	25	DFT-QPSK	H	Outer_Full	20.89	22.89	30	PASS
N78-3450-3550	30	25	DFT-16QAM	H	Inner_1RB_Left	22.20	24.20	30	PASS
N78-3450-3550	30	25	DFT-16QAM	H	Inner_1RB_Right	21.80	23.80	30	PASS
N78-3450-3550	30	25	DFT-16QAM	H	Outer_Full	20.27	22.27	30	PASS
N78-3450-3550	30	25	DFT-64QAM	H	Inner_1RB_Left	20.19	22.19	30	PASS
N78-3450-3550	30	25	DFT-64QAM	H	Inner_1RB_Right	19.65	21.65	30	PASS
N78-3450-3550	30	25	DFT-64QAM	H	Outer_Full	19.73	21.73	30	PASS
N78-3450-3550	30	25	DFT-256QAM	H	Inner_1RB_Left	17.37	19.37	30	PASS



Unless otherwise agreed in writing, this document is issued by the Company subject to its General Conditions of Service printed overleaf, available on request or accessible at <http://www.sgs.com/en/Terms-and-Conditions.aspx> and, for electronic format documents, subject to Terms and Conditions for Electronic Documents at <http://www.sgs.com/en/Terms-and-Conditions/Terms-e-Documents.aspx>. Attention is drawn to the limitation of liability, indemnification and jurisdiction issues defined therein. Any holder of this document is advised that information contained herein reflects the Company's findings at the time of its intervention only and within the limits of Client's instructions, if any. The Company's sole responsibility is to its Client and this document does not exonerate parties to a transaction from exercising all their rights and obligations under the transaction documents. This document cannot be reproduced except in full, without prior written approval of the Company. Any unauthorized alteration, forgery or falsification of the content or appearance of this document is unlawful and offenders may be prosecuted to the fullest extent of the law. Unless otherwise stated the results shown in this test report refer only to the sample(s) tested and such sample(s) are retained for 30 days only.

Attention: To check the authenticity of testing/inspection report & certificate, please contact us at telephone: (86-755) 8307 1443, or email: CN.Doccheck@sgs.com

South of No. 6 Plant, No. 1, Runsheng Road, Suzhou Industrial Park, Suzhou Area, China (Jiangsu) Pilot Free Trade Zone 215000 t (86-512) 62992980 www.sgs.com.cn
 中国·苏州·中国 (江苏) 自由贸易试验区苏州片区苏州工业园区润胜路1号的6号厂房南楼 邮编: 215000 t (86-512) 62992980 sgs.china@sgs.com

Report No.: SEWM2306000194RG02

Rev.: 01

Page: 7 of 160

N78-3450-3550	30	25	DFT-256QAM	H	Inner_1RB_Right	17.21	19.21	30	PASS
N78-3450-3550	30	25	DFT-256QAM	H	Outer_Full	17.34	19.34	30	PASS
N78-3450-3550	30	30	DFT-PI2BPSK	L	Inner_1RB_Left	23.90	25.90	30	PASS
N78-3450-3550	30	30	DFT-PI2BPSK	L	Inner_1RB_Right	23.89	25.89	30	PASS
N78-3450-3550	30	30	DFT-PI2BPSK	L	Outer_Full	22.20	24.20	30	PASS
N78-3450-3550	30	30	DFT-QPSK	L	Inner_1RB_Left	23.80	25.80	30	PASS
N78-3450-3550	30	30	DFT-QPSK	L	Inner_1RB_Right	23.64	25.64	30	PASS
N78-3450-3550	30	30	DFT-QPSK	L	Outer_Full	22.04	24.04	30	PASS
N78-3450-3550	30	30	DFT-16QAM	L	Inner_1RB_Left	23.12	25.12	30	PASS
N78-3450-3550	30	30	DFT-16QAM	L	Inner_1RB_Right	22.68	24.68	30	PASS
N78-3450-3550	30	30	DFT-16QAM	L	Outer_Full	20.89	22.89	30	PASS
N78-3450-3550	30	30	DFT-64QAM	L	Inner_1RB_Left	21.05	23.05	30	PASS
N78-3450-3550	30	30	DFT-64QAM	L	Inner_1RB_Right	20.80	22.80	30	PASS
N78-3450-3550	30	30	DFT-64QAM	L	Outer_Full	20.56	22.56	30	PASS
N78-3450-3550	30	30	DFT-256QAM	L	Inner_1RB_Left	18.40	20.40	30	PASS
N78-3450-3550	30	30	DFT-256QAM	L	Inner_1RB_Right	18.50	20.50	30	PASS
N78-3450-3550	30	30	DFT-256QAM	L	Outer_Full	18.25	20.25	30	PASS
N78-3450-3550	30	30	DFT-PI2BPSK	M	Inner_1RB_Left	23.90	25.90	30	PASS
N78-3450-3550	30	30	DFT-PI2BPSK	M	Inner_1RB_Right	23.41	25.41	30	PASS
N78-3450-3550	30	30	DFT-PI2BPSK	M	Outer_Full	22.30	24.30	30	PASS
N78-3450-3550	30	30	DFT-QPSK	M	Inner_1RB_Left	23.34	25.34	30	PASS
N78-3450-3550	30	30	DFT-QPSK	M	Inner_1RB_Right	23.51	25.51	30	PASS
N78-3450-3550	30	30	DFT-QPSK	M	Outer_Full	21.76	23.76	30	PASS
N78-3450-3550	30	30	DFT-16QAM	M	Inner_1RB_Left	22.51	24.51	30	PASS
N78-3450-3550	30	30	DFT-16QAM	M	Inner_1RB_Right	22.61	24.61	30	PASS
N78-3450-3550	30	30	DFT-16QAM	M	Outer_Full	20.50	22.50	30	PASS
N78-3450-3550	30	30	DFT-64QAM	M	Inner_1RB_Left	20.57	22.57	30	PASS
N78-3450-3550	30	30	DFT-64QAM	M	Inner_1RB_Right	20.29	22.29	30	PASS
N78-3450-3550	30	30	DFT-64QAM	M	Outer_Full	20.13	22.13	30	PASS
N78-3450-3550	30	30	DFT-256QAM	M	Inner_1RB_Left	18.03	20.03	30	PASS
N78-3450-3550	30	30	DFT-256QAM	M	Inner_1RB_Right	17.60	19.60	30	PASS
N78-3450-3550	30	30	DFT-256QAM	M	Outer_Full	18.29	20.29	30	PASS
N78-3450-3550	30	30	DFT-PI2BPSK	H	Inner_1RB_Left	23.12	25.12	30	PASS
N78-3450-3550	30	30	DFT-PI2BPSK	H	Inner_1RB_Right	23.10	25.10	30	PASS
N78-3450-3550	30	30	DFT-PI2BPSK	H	Outer_Full	21.44	23.44	30	PASS
N78-3450-3550	30	30	DFT-QPSK	H	Inner_1RB_Left	23.31	25.31	30	PASS
N78-3450-3550	30	30	DFT-QPSK	H	Inner_1RB_Right	22.97	24.97	30	PASS



Unless otherwise agreed in writing, this document is issued by the Company subject to its General Conditions of Service printed overleaf, available on request or accessible at <http://www.sgs.com/en/Terms-and-Conditions.aspx> and, for electronic format documents, subject to Terms and Conditions for Electronic Documents at <http://www.sgs.com/en/Terms-and-Conditions/Terms-e-Documents.aspx>. Attention is drawn to the limitation of liability, indemnification and jurisdiction issues defined therein. Any holder of this document is advised that information contained hereon reflects the Company's findings at the time of its intervention only and within the limits of Client's instructions, if any. The Company's sole responsibility is to its Client and this document does not exonerate parties to a transaction from exercising all their rights and obligations under the transaction documents. This document cannot be reproduced except in full, without prior written approval of the Company. Any unauthorized alteration, forgery or falsification of the content or appearance of this document is unlawful and offenders may be prosecuted to the fullest extent of the law. Unless otherwise stated the results shown in this test report refer only to the sample(s) tested and such sample(s) are retained for 30 days only.

Attention: To check the authenticity of testing/inspection report & certificate, please contact us at telephone: (86-755) 8307 1443, or email: CN.Doccheck@sgs.com
 South of No. 6 Plant, No. 1, Runsheng Road, Suzhou Industrial Park, Suzhou Area, China (Jiangsu) Pilot Free Trade Zone 215000 t (86-512) 62992980 www.sgs.com.cn
 中国·苏州·中国(江苏)自由贸易试验区苏州片区苏州工业园区润胜路1号的6号厂房南楼 邮编: 215000 t (86-512) 62992980 sgs.china@sgs.com

Report No.: SEWM2306000194RG02

Rev.: 01

Page: 8 of 160

N78-3450-3550	30	30	DFT-QPSK	H	Outer_Full	20.88	22.88	30	PASS
N78-3450-3550	30	30	DFT-16QAM	H	Inner_1RB_Left	22.08	24.08	30	PASS
N78-3450-3550	30	30	DFT-16QAM	H	Inner_1RB_Right	22.08	24.08	30	PASS
N78-3450-3550	30	30	DFT-16QAM	H	Outer_Full	19.89	21.89	30	PASS
N78-3450-3550	30	30	DFT-64QAM	H	Inner_1RB_Left	19.94	21.94	30	PASS
N78-3450-3550	30	30	DFT-64QAM	H	Inner_1RB_Right	19.83	21.83	30	PASS
N78-3450-3550	30	30	DFT-64QAM	H	Outer_Full	19.42	21.42	30	PASS
N78-3450-3550	30	30	DFT-256QAM	H	Inner_1RB_Left	17.50	19.50	30	PASS
N78-3450-3550	30	30	DFT-256QAM	H	Inner_1RB_Right	17.29	19.29	30	PASS
N78-3450-3550	30	30	DFT-256QAM	H	Outer_Full	17.49	19.49	30	PASS
N78-3450-3550	30	40	DFT-PI2BPSK	L	Inner_1RB_Left	24.04	26.04	30	PASS
N78-3450-3550	30	40	DFT-PI2BPSK	L	Inner_1RB_Right	23.86	25.86	30	PASS
N78-3450-3550	30	40	DFT-PI2BPSK	L	Outer_Full	22.63	24.63	30	PASS
N78-3450-3550	30	40	DFT-QPSK	L	Inner_1RB_Left	24.18	26.18	30	PASS
N78-3450-3550	30	40	DFT-QPSK	L	Inner_1RB_Right	23.50	25.50	30	PASS
N78-3450-3550	30	40	DFT-QPSK	L	Outer_Full	22.81	24.81	30	PASS
N78-3450-3550	30	40	DFT-16QAM	L	Inner_1RB_Left	21.70	23.70	30	PASS
N78-3450-3550	30	40	DFT-16QAM	L	Inner_1RB_Right	21.77	23.77	30	PASS
N78-3450-3550	30	40	DFT-16QAM	L	Outer_Full	21.42	23.42	30	PASS
N78-3450-3550	30	40	DFT-64QAM	L	Inner_1RB_Left	20.48	22.48	30	PASS
N78-3450-3550	30	40	DFT-64QAM	L	Inner_1RB_Right	20.62	22.62	30	PASS
N78-3450-3550	30	40	DFT-64QAM	L	Outer_Full	20.23	22.23	30	PASS
N78-3450-3550	30	40	DFT-256QAM	L	Inner_1RB_Left	18.61	20.61	30	PASS
N78-3450-3550	30	40	DFT-256QAM	L	Inner_1RB_Right	18.28	20.28	30	PASS
N78-3450-3550	30	40	DFT-256QAM	L	Outer_Full	17.82	19.82	30	PASS
N78-3450-3550	30	40	DFT-PI2BPSK	M	Inner_1RB_Left	24.02	26.02	30	PASS
N78-3450-3550	30	40	DFT-PI2BPSK	M	Inner_1RB_Right	23.26	25.26	30	PASS
N78-3450-3550	30	40	DFT-PI2BPSK	M	Outer_Full	22.15	24.15	30	PASS
N78-3450-3550	30	40	DFT-QPSK	M	Inner_1RB_Left	23.93	25.93	30	PASS
N78-3450-3550	30	40	DFT-QPSK	M	Inner_1RB_Right	23.13	25.13	30	PASS
N78-3450-3550	30	40	DFT-QPSK	M	Outer_Full	23.87	25.87	30	PASS
N78-3450-3550	30	40	DFT-16QAM	M	Inner_1RB_Left	22.76	24.76	30	PASS
N78-3450-3550	30	40	DFT-16QAM	M	Inner_1RB_Right	22.73	24.73	30	PASS
N78-3450-3550	30	40	DFT-16QAM	M	Outer_Full	22.15	24.15	30	PASS
N78-3450-3550	30	40	DFT-64QAM	M	Inner_1RB_Left	21.69	23.69	30	PASS
N78-3450-3550	30	40	DFT-64QAM	M	Inner_1RB_Right	21.37	23.37	30	PASS
N78-3450-3550	30	40	DFT-64QAM	M	Outer_Full	21.23	23.23	30	PASS



Unless otherwise agreed in writing, this document is issued by the Company subject to its General Conditions of Service printed overleaf, available on request or accessible at <http://www.sgs.com/en/Terms-and-Conditions.aspx> and, for electronic format documents, subject to Terms and Conditions for Electronic Documents at <http://www.sgs.com/en/Terms-and-Conditions/Terms-e-Documents.aspx>. Attention is drawn to the limitation of liability, indemnification and jurisdiction issues defined therein. Any holder of this document is advised that information contained herein reflects the Company's findings at the time of its intervention only and within the limits of Client's instructions, if any. The Company's sole responsibility is to its Client and this document does not exonerate parties to a transaction from exercising all their rights and obligations under the transaction documents. This document cannot be reproduced except in full, without prior written approval of the Company. Any unauthorized alteration, forgery or falsification of the content or appearance of this document is unlawful and offenders may be prosecuted to the fullest extent of the law. Unless otherwise stated the results shown in this test report refer only to the sample(s) tested and such sample(s) are retained for 30 days only.

Attention: To check the authenticity of testing/inspection report & certificate, please contact us at telephone: (86-755) 8307 1443, or email: CN.Doccheck@sgs.com

South of No. 6 Plant, No. 1, Runsheng Road, Suzhou Industrial Park, Suzhou Area, China (Jiangsu) Pilot Free Trade Zone 215000 t (86-512) 62992980 www.sgs.com.cn
 中国·苏州·中国(江苏)自由贸易试验区苏州片区苏州工业园区润胜路1号的6号厂房南楼 邮编: 215000 t (86-512) 62992980 sgs.china@sgs.com



Report No.: SEWM2306000194RG02

Rev.: 01

Page: 9 of 160

N78-3450-3550	30	40	DFT-256QAM	M	Inner_1RB_Left	18.21	20.21	30	PASS
N78-3450-3550	30	40	DFT-256QAM	M	Inner_1RB_Right	17.91	19.91	30	PASS
N78-3450-3550	30	40	DFT-256QAM	M	Outer_Full	18.14	20.14	30	PASS
N78-3450-3550	30	40	DFT-PI2BPSK	H	Inner_1RB_Left	23.31	25.31	30	PASS
N78-3450-3550	30	40	DFT-PI2BPSK	H	Inner_1RB_Right	22.80	24.80	30	PASS
N78-3450-3550	30	40	DFT-PI2BPSK	H	Outer_Full	21.65	23.65	30	PASS
N78-3450-3550	30	40	DFT-QPSK	H	Inner_1RB_Left	22.79	24.79	30	PASS
N78-3450-3550	30	40	DFT-QPSK	H	Inner_1RB_Right	22.68	24.68	30	PASS
N78-3450-3550	30	40	DFT-QPSK	H	Outer_Full	21.36	23.36	30	PASS
N78-3450-3550	30	40	DFT-16QAM	H	Inner_1RB_Left	22.25	24.25	30	PASS
N78-3450-3550	30	40	DFT-16QAM	H	Inner_1RB_Right	21.88	23.88	30	PASS
N78-3450-3550	30	40	DFT-16QAM	H	Outer_Full	20.20	22.20	30	PASS
N78-3450-3550	30	40	DFT-64QAM	H	Inner_1RB_Left	20.35	22.35	30	PASS
N78-3450-3550	30	40	DFT-64QAM	H	Inner_1RB_Right	20.00	22.00	30	PASS
N78-3450-3550	30	40	DFT-64QAM	H	Outer_Full	19.82	21.82	30	PASS
N78-3450-3550	30	40	DFT-256QAM	H	Inner_1RB_Left	18.29	20.29	30	PASS
N78-3450-3550	30	40	DFT-256QAM	H	Inner_1RB_Right	17.19	19.19	30	PASS
N78-3450-3550	30	40	DFT-256QAM	H	Outer_Full	17.76	19.76	30	PASS
N78-3450-3550	30	50	DFT-PI2BPSK	L	Inner_1RB_Left	24.29	26.29	30	PASS
N78-3450-3550	30	50	DFT-PI2BPSK	L	Inner_1RB_Right	23.49	25.49	30	PASS
N78-3450-3550	30	50	DFT-PI2BPSK	L	Outer_Full	22.29	24.29	30	PASS
N78-3450-3550	30	50	DFT-QPSK	L	Inner_1RB_Left	23.90	25.90	30	PASS
N78-3450-3550	30	50	DFT-QPSK	L	Inner_1RB_Right	23.63	25.63	30	PASS
N78-3450-3550	30	50	DFT-QPSK	L	Outer_Full	22.15	24.15	30	PASS
N78-3450-3550	30	50	DFT-16QAM	L	Inner_1RB_Left	23.20	25.20	30	PASS
N78-3450-3550	30	50	DFT-16QAM	L	Inner_1RB_Right	22.64	24.64	30	PASS
N78-3450-3550	30	50	DFT-16QAM	L	Outer_Full	20.82	22.82	30	PASS
N78-3450-3550	30	50	DFT-64QAM	L	Inner_1RB_Left	20.90	22.90	30	PASS
N78-3450-3550	30	50	DFT-64QAM	L	Inner_1RB_Right	20.80	22.80	30	PASS
N78-3450-3550	30	50	DFT-64QAM	L	Outer_Full	20.45	22.45	30	PASS
N78-3450-3550	30	50	DFT-256QAM	L	Inner_1RB_Left	18.75	20.75	30	PASS
N78-3450-3550	30	50	DFT-256QAM	L	Inner_1RB_Right	18.25	20.25	30	PASS
N78-3450-3550	30	50	DFT-256QAM	L	Outer_Full	18.35	20.35	30	PASS
N78-3450-3550	30	50	DFT-PI2BPSK	M	Inner_1RB_Left	23.69	25.69	30	PASS
N78-3450-3550	30	50	DFT-PI2BPSK	M	Inner_1RB_Right	23.29	25.29	30	PASS
N78-3450-3550	30	50	DFT-PI2BPSK	M	Outer_Full	22.19	24.19	30	PASS
N78-3450-3550	30	50	DFT-QPSK	M	Inner_1RB_Left	22.90	24.90	30	PASS



Unless otherwise agreed in writing, this document is issued by the Company subject to its General Conditions of Service printed overleaf, available on request or accessible at <http://www.sgs.com/en/Terms-and-Conditions.aspx> and, for electronic format documents, subject to Terms and Conditions for Electronic Documents at <http://www.sgs.com/en/Terms-and-Conditions/Terms-e-Documents.aspx>. Attention is drawn to the limitation of liability, indemnification and jurisdiction issues defined therein. Any holder of this document is advised that information contained hereon reflects the Company's findings at the time of its intervention only and within the limits of Client's instructions, if any. The Company's sole responsibility is to its Client and this document does not exonerate parties to a transaction from exercising all their rights and obligations under the transaction documents. This document cannot be reproduced except in full, without prior written approval of the Company. Any unauthorized alteration, forgery or falsification of the content or appearance of this document is unlawful and offenders may be prosecuted to the fullest extent of the law. Unless otherwise stated the results shown in this test report refer only to the sample(s) tested and such sample(s) are retained for 30 days only.

Attention: To check the authenticity of testing/inspection report & certificate, please contact us at telephone: (86-755) 8307 1443, or email: CN.Doccheck@sgs.com

South of No. 6 Plant, No. 1, Runsheng Road, Suzhou Industrial Park, Suzhou Area, China (Jiangsu) Pilot Free Trade Zone 215000
 中国·苏州·中国(江苏)自由贸易试验区苏州片区苏州工业园区润胜路1号的6号厂房南楼 邮编: 215000

t (86-512) 62992980 www.sgs.com.cn
 t (86-512) 62992980 sgs.china@sgs.com



Report No.: SEWM2306000194RG02

Rev.: 01

Page: 10 of 160

N78-3450-3550	30	50	DFT-QPSK	M	Inner_1RB_Right	23.17	25.17	30	PASS
N78-3450-3550	30	50	DFT-QPSK	M	Outer_Full	21.78	23.78	30	PASS
N78-3450-3550	30	50	DFT-16QAM	M	Inner_1RB_Left	22.70	24.70	30	PASS
N78-3450-3550	30	50	DFT-16QAM	M	Inner_1RB_Right	22.35	24.35	30	PASS
N78-3450-3550	30	50	DFT-16QAM	M	Outer_Full	20.92	22.92	30	PASS
N78-3450-3550	30	50	DFT-64QAM	M	Inner_1RB_Left	20.71	22.71	30	PASS
N78-3450-3550	30	50	DFT-64QAM	M	Inner_1RB_Right	20.22	22.22	30	PASS
N78-3450-3550	30	50	DFT-64QAM	M	Outer_Full	20.28	22.28	30	PASS
N78-3450-3550	30	50	DFT-256QAM	M	Inner_1RB_Left	18.13	20.13	30	PASS
N78-3450-3550	30	50	DFT-256QAM	M	Inner_1RB_Right	17.53	19.53	30	PASS
N78-3450-3550	30	50	DFT-256QAM	M	Outer_Full	18.01	20.01	30	PASS
N78-3450-3550	30	50	DFT-PI2BPSK	H	Inner_1RB_Left	23.17	25.17	30	PASS
N78-3450-3550	30	50	DFT-PI2BPSK	H	Inner_1RB_Right	22.71	24.71	30	PASS
N78-3450-3550	30	50	DFT-PI2BPSK	H	Outer_Full	21.87	23.87	30	PASS
N78-3450-3550	30	50	DFT-QPSK	H	Inner_1RB_Left	23.32	25.32	30	PASS
N78-3450-3550	30	50	DFT-QPSK	H	Inner_1RB_Right	22.99	24.99	30	PASS
N78-3450-3550	30	50	DFT-QPSK	H	Outer_Full	21.15	23.15	30	PASS
N78-3450-3550	30	50	DFT-16QAM	H	Inner_1RB_Left	22.66	24.66	30	PASS
N78-3450-3550	30	50	DFT-16QAM	H	Inner_1RB_Right	21.88	23.88	30	PASS
N78-3450-3550	30	50	DFT-16QAM	H	Outer_Full	20.17	22.17	30	PASS
N78-3450-3550	30	50	DFT-64QAM	H	Inner_1RB_Left	20.64	22.64	30	PASS
N78-3450-3550	30	50	DFT-64QAM	H	Inner_1RB_Right	19.87	21.87	30	PASS
N78-3450-3550	30	50	DFT-64QAM	H	Outer_Full	19.76	21.76	30	PASS
N78-3450-3550	30	50	DFT-256QAM	H	Inner_1RB_Left	17.20	19.20	30	PASS
N78-3450-3550	30	50	DFT-256QAM	H	Inner_1RB_Right	17.44	19.44	30	PASS
N78-3450-3550	30	50	DFT-256QAM	H	Outer_Full	17.99	19.99	30	PASS
N78-3450-3550	30	60	DFT-PI2BPSK	L	Inner_1RB_Left	24.11	26.11	30	PASS
N78-3450-3550	30	60	DFT-PI2BPSK	L	Inner_1RB_Right	23.68	25.68	30	PASS
N78-3450-3550	30	60	DFT-PI2BPSK	L	Outer_Full	22.30	24.30	30	PASS
N78-3450-3550	30	60	DFT-QPSK	L	Inner_1RB_Left	24.08	26.08	30	PASS
N78-3450-3550	30	60	DFT-QPSK	L	Inner_1RB_Right	23.54	25.54	30	PASS
N78-3450-3550	30	60	DFT-QPSK	L	Outer_Full	21.88	23.88	30	PASS
N78-3450-3550	30	60	DFT-16QAM	L	Inner_1RB_Left	23.05	25.05	30	PASS
N78-3450-3550	30	60	DFT-16QAM	L	Inner_1RB_Right	22.33	24.33	30	PASS
N78-3450-3550	30	60	DFT-16QAM	L	Outer_Full	20.96	22.96	30	PASS
N78-3450-3550	30	60	DFT-64QAM	L	Inner_1RB_Left	20.97	22.97	30	PASS
N78-3450-3550	30	60	DFT-64QAM	L	Inner_1RB_Right	20.39	22.39	30	PASS



Unless otherwise agreed in writing, this document is issued by the Company subject to its General Conditions of Service printed overleaf, available on request or accessible at <http://www.sgs.com/en/Terms-and-Conditions.aspx> and, for electronic format documents, subject to Terms and Conditions for Electronic Documents at <http://www.sgs.com/en/Terms-and-Conditions/Terms-e-Documents.aspx>. Attention is drawn to the limitation of liability, indemnification and jurisdiction issues defined therein. Any holder of this document is advised that information contained herein reflects the Company's findings at the time of its intervention only and within the limits of Client's instructions, if any. The Company's sole responsibility is to its Client and this document does not exonerate parties to a transaction from exercising all their rights and obligations under the transaction documents. This document cannot be reproduced except in full, without prior written approval of the Company. Any unauthorized alteration, forgery or falsification of the content or appearance of this document is unlawful and offenders may be prosecuted to the fullest extent of the law. Unless otherwise stated the results shown in this test report refer only to the sample(s) tested and such sample(s) are retained for 30 days only.

Attention: To check the authenticity of testing/inspection report & certificate, please contact us at telephone: (86-755) 8307 1443, or email: CN.Doccheck@sgs.com
 South of No. 6 Plant, No. 1, Runsheng Road, Suzhou Industrial Park, Suzhou Area, China (Jiangsu) Pilot Free Trade Zone 215000 t (86-512) 62992980 www.sgs.com.cn
 中国·苏州·中国(江苏)自由贸易试验区苏州片区苏州工业园区润胜路1号的6号厂房南楼 邮编: 215000 t (86-512) 62992980 sgs.china@sgs.com



Report No.: SEWM2306000194RG02

Rev.: 01

Page: 11 of 160

N78-3450-3550	30	60	DFT-64QAM	L	Outer_Full	20.59	22.59	30	PASS
N78-3450-3550	30	60	DFT-256QAM	L	Inner_1RB_Left	18.92	20.92	30	PASS
N78-3450-3550	30	60	DFT-256QAM	L	Inner_1RB_Right	17.96	19.96	30	PASS
N78-3450-3550	30	60	DFT-256QAM	L	Outer_Full	18.40	20.40	30	PASS
N78-3450-3550	30	60	DFT-PI2BPSK	M	Inner_1RB_Left	23.65	25.65	30	PASS
N78-3450-3550	30	60	DFT-PI2BPSK	M	Inner_1RB_Right	22.99	24.99	30	PASS
N78-3450-3550	30	60	DFT-PI2BPSK	M	Outer_Full	22.34	24.34	30	PASS
N78-3450-3550	30	60	DFT-QPSK	M	Inner_1RB_Left	23.61	25.61	30	PASS
N78-3450-3550	30	60	DFT-QPSK	M	Inner_1RB_Right	23.37	25.37	30	PASS
N78-3450-3550	30	60	DFT-QPSK	M	Outer_Full	21.42	23.42	30	PASS
N78-3450-3550	30	60	DFT-16QAM	M	Inner_1RB_Left	23.07	25.07	30	PASS
N78-3450-3550	30	60	DFT-16QAM	M	Inner_1RB_Right	22.55	24.55	30	PASS
N78-3450-3550	30	60	DFT-16QAM	M	Outer_Full	20.47	22.47	30	PASS
N78-3450-3550	30	60	DFT-64QAM	M	Inner_1RB_Left	20.73	22.73	30	PASS
N78-3450-3550	30	60	DFT-64QAM	M	Inner_1RB_Right	19.98	21.98	30	PASS
N78-3450-3550	30	60	DFT-64QAM	M	Outer_Full	20.09	22.09	30	PASS
N78-3450-3550	30	60	DFT-256QAM	M	Inner_1RB_Left	18.02	20.02	30	PASS
N78-3450-3550	30	60	DFT-256QAM	M	Inner_1RB_Right	17.79	19.79	30	PASS
N78-3450-3550	30	60	DFT-256QAM	M	Outer_Full	18.20	20.20	30	PASS
N78-3450-3550	30	60	DFT-PI2BPSK	H	Inner_1RB_Left	24.01	26.01	30	PASS
N78-3450-3550	30	60	DFT-PI2BPSK	H	Inner_1RB_Right	22.70	24.70	30	PASS
N78-3450-3550	30	60	DFT-PI2BPSK	H	Outer_Full	22.15	24.15	30	PASS
N78-3450-3550	30	60	DFT-QPSK	H	Inner_1RB_Left	23.64	25.64	30	PASS
N78-3450-3550	30	60	DFT-QPSK	H	Inner_1RB_Right	22.89	24.89	30	PASS
N78-3450-3550	30	60	DFT-QPSK	H	Outer_Full	21.62	23.62	30	PASS
N78-3450-3550	30	60	DFT-16QAM	H	Inner_1RB_Left	22.87	24.87	30	PASS
N78-3450-3550	30	60	DFT-16QAM	H	Inner_1RB_Right	21.64	23.64	30	PASS
N78-3450-3550	30	60	DFT-16QAM	H	Outer_Full	20.37	22.37	30	PASS
N78-3450-3550	30	60	DFT-64QAM	H	Inner_1RB_Left	20.94	22.94	30	PASS
N78-3450-3550	30	60	DFT-64QAM	H	Inner_1RB_Right	19.77	21.77	30	PASS
N78-3450-3550	30	60	DFT-64QAM	H	Outer_Full	19.83	21.83	30	PASS
N78-3450-3550	30	60	DFT-256QAM	H	Inner_1RB_Left	18.43	20.43	30	PASS
N78-3450-3550	30	60	DFT-256QAM	H	Inner_1RB_Right	17.54	19.54	30	PASS
N78-3450-3550	30	60	DFT-256QAM	H	Outer_Full	18.18	20.18	30	PASS
N78-3450-3550	30	70	DFT-PI2BPSK	L	Inner_1RB_Left	23.96	25.96	30	PASS
N78-3450-3550	30	70	DFT-PI2BPSK	L	Inner_1RB_Right	23.04	25.04	30	PASS
N78-3450-3550	30	70	DFT-PI2BPSK	L	Outer_Full	22.52	24.52	30	PASS



Unless otherwise agreed in writing, this document is issued by the Company subject to its General Conditions of Service printed overleaf, available on request or accessible at <http://www.sgs.com/en/Terms-and-Conditions.aspx> and, for electronic format documents, subject to Terms and Conditions for Electronic Documents at <http://www.sgs.com/en/Terms-and-Conditions/Terms-e-Documents.aspx>. Attention is drawn to the limitation of liability, indemnification and jurisdiction issues defined therein. Any holder of this document is advised that information contained herein reflects the Company's findings at the time of its intervention only and within the limits of Client's instructions, if any. The Company's sole responsibility is to its Client and this document does not exonerate parties to a transaction from exercising all their rights and obligations under the transaction documents. This document cannot be reproduced except in full, without prior written approval of the Company. Any unauthorized alteration, forgery or falsification of the content or appearance of this document is unlawful and offenders may be prosecuted to the fullest extent of the law. Unless otherwise stated the results shown in this test report refer only to the sample(s) tested and such sample(s) are retained for 30 days only.

Attention: To check the authenticity of testing/inspection report & certificate, please contact us at telephone: (86-755) 8307 1443, or email: CN.Doccheck@sgs.com

South of No. 6 Plant, No. 1, Runsheng Road, Suzhou Industrial Park, Suzhou Area, China (Jiangsu) Pilot Free Trade Zone 215000
 中国·苏州·中国 (江苏) 自由贸易试验区苏州片区苏州工业园区润胜路1号的6号厂房南面 邮编: 215000

t (86-512) 62992980 www.sgs.com.cn
 t (86-512) 62992980 sgs.china@sgs.com

N78-3450-3550	30	70	DFT-QPSK	L	Inner_1RB_Left	24.36	26.36	30	PASS
N78-3450-3550	30	70	DFT-QPSK	L	Inner_1RB_Right	23.52	25.52	30	PASS
N78-3450-3550	30	70	DFT-QPSK	L	Outer_Full	21.81	23.81	30	PASS
N78-3450-3550	30	70	DFT-16QAM	L	Inner_1RB_Left	23.25	25.25	30	PASS
N78-3450-3550	30	70	DFT-16QAM	L	Inner_1RB_Right	22.39	24.39	30	PASS
N78-3450-3550	30	70	DFT-16QAM	L	Outer_Full	20.92	22.92	30	PASS
N78-3450-3550	30	70	DFT-64QAM	L	Inner_1RB_Left	20.91	22.91	30	PASS
N78-3450-3550	30	70	DFT-64QAM	L	Inner_1RB_Right	20.15	22.15	30	PASS
N78-3450-3550	30	70	DFT-64QAM	L	Outer_Full	20.51	22.51	30	PASS
N78-3450-3550	30	70	DFT-256QAM	L	Inner_1RB_Left	18.59	20.59	30	PASS
N78-3450-3550	30	70	DFT-256QAM	L	Inner_1RB_Right	17.55	19.55	30	PASS
N78-3450-3550	30	70	DFT-256QAM	L	Outer_Full	18.38	20.38	30	PASS
N78-3450-3550	30	70	DFT-PI2BPSK	M	Inner_1RB_Left	23.68	25.68	30	PASS
N78-3450-3550	30	70	DFT-PI2BPSK	M	Inner_1RB_Right	23.29	25.29	30	PASS
N78-3450-3550	30	70	DFT-PI2BPSK	M	Outer_Full	22.25	24.25	30	PASS
N78-3450-3550	30	70	DFT-QPSK	M	Inner_1RB_Left	23.85	25.85	30	PASS
N78-3450-3550	30	70	DFT-QPSK	M	Inner_1RB_Right	23.16	25.16	30	PASS
N78-3450-3550	30	70	DFT-QPSK	M	Outer_Full	21.57	23.57	30	PASS
N78-3450-3550	30	70	DFT-16QAM	M	Inner_1RB_Left	22.66	24.66	30	PASS
N78-3450-3550	30	70	DFT-16QAM	M	Inner_1RB_Right	22.10	24.10	30	PASS
N78-3450-3550	30	70	DFT-16QAM	M	Outer_Full	20.46	22.46	30	PASS
N78-3450-3550	30	70	DFT-64QAM	M	Inner_1RB_Left	21.01	23.01	30	PASS
N78-3450-3550	30	70	DFT-64QAM	M	Inner_1RB_Right	20.00	22.00	30	PASS
N78-3450-3550	30	70	DFT-64QAM	M	Outer_Full	20.13	22.13	30	PASS
N78-3450-3550	30	70	DFT-256QAM	M	Inner_1RB_Left	18.28	20.28	30	PASS
N78-3450-3550	30	70	DFT-256QAM	M	Inner_1RB_Right	17.51	19.51	30	PASS
N78-3450-3550	30	70	DFT-256QAM	M	Outer_Full	17.91	19.91	30	PASS
N78-3450-3550	30	70	DFT-PI2BPSK	H	Inner_1RB_Left	23.55	25.55	30	PASS
N78-3450-3550	30	70	DFT-PI2BPSK	H	Inner_1RB_Right	22.72	24.72	30	PASS
N78-3450-3550	30	70	DFT-PI2BPSK	H	Outer_Full	21.79	23.79	30	PASS
N78-3450-3550	30	70	DFT-QPSK	H	Inner_1RB_Left	23.78	25.78	30	PASS
N78-3450-3550	30	70	DFT-QPSK	H	Inner_1RB_Right	22.92	24.92	30	PASS
N78-3450-3550	30	70	DFT-QPSK	H	Outer_Full	21.40	23.40	30	PASS
N78-3450-3550	30	70	DFT-16QAM	H	Inner_1RB_Left	22.63	24.63	30	PASS
N78-3450-3550	30	70	DFT-16QAM	H	Inner_1RB_Right	21.69	23.69	30	PASS
N78-3450-3550	30	70	DFT-16QAM	H	Outer_Full	20.62	22.62	30	PASS
N78-3450-3550	30	70	DFT-64QAM	H	Inner_1RB_Left	20.88	22.88	30	PASS



Unless otherwise agreed in writing, this document is issued by the Company subject to its General Conditions of Service printed overleaf, available on request or accessible at <http://www.sgs.com/en/Terms-and-Conditions.aspx> and, for electronic format documents, subject to Terms and Conditions for Electronic Documents at <http://www.sgs.com/en/Terms-and-Conditions/Terms-e-Documents.aspx>. Attention is drawn to the limitation of liability, indemnification and jurisdiction issues defined therein. Any holder of this document is advised that information contained hereon reflects the Company's findings at the time of its intervention only and within the limits of Client's instructions, if any. The Company's sole responsibility is to its Client and this document does not exonerate parties to a transaction from exercising all their rights and obligations under the transaction documents. This document cannot be reproduced except in full, without prior written approval of the Company. Any unauthorized alteration, forgery or falsification of the content or appearance of this document is unlawful and offenders may be prosecuted to the fullest extent of the law. Unless otherwise stated the results shown in this test report refer only to the sample(s) tested and such sample(s) are retained for 30 days only.

Attention: To check the authenticity of testing/inspection report & certificate, please contact us at telephone: (86-755) 8307 1443, or email: CN.Doccheck@sgs.com

South of No. 6 Plant, No. 1, Runsheng Road, Suzhou Industrial Park, Suzhou Area, China (Jiangsu) Pilot Free Trade Zone 215000
 中国·苏州·中国(江苏)自由贸易试验区苏州片区苏州工业园区润胜路1号的6号厂房南面 邮编: 215000

t (86-512) 62992980 www.sgs.com.cn
 t (86-512) 62992980 sgs.china@sgs.com

Report No.: SEWM2306000194RG02

Rev.: 01

Page: 13 of 160

N78-3450-3550	30	70	DFT-64QAM	H	Inner_1RB_Right	19.93	21.93	30	PASS
N78-3450-3550	30	70	DFT-64QAM	H	Outer_Full	20.19	22.19	30	PASS
N78-3450-3550	30	70	DFT-256QAM	H	Inner_1RB_Left	18.24	20.24	30	PASS
N78-3450-3550	30	70	DFT-256QAM	H	Inner_1RB_Right	17.07	19.07	30	PASS
N78-3450-3550	30	70	DFT-256QAM	H	Outer_Full	17.70	19.70	30	PASS
N78-3450-3550	30	80	DFT-PI2BPSK	L	Inner_1RB_Left	24.14	26.14	30	PASS
N78-3450-3550	30	80	DFT-PI2BPSK	L	Inner_1RB_Right	23.19	25.19	30	PASS
N78-3450-3550	30	80	DFT-PI2BPSK	L	Outer_Full	22.40	24.40	30	PASS
N78-3450-3550	30	80	DFT-QPSK	L	Inner_1RB_Left	23.11	25.11	30	PASS
N78-3450-3550	30	80	DFT-QPSK	L	Inner_1RB_Right	23.02	25.02	30	PASS
N78-3450-3550	30	80	DFT-QPSK	L	Outer_Full	21.80	23.80	30	PASS
N78-3450-3550	30	80	DFT-16QAM	L	Inner_1RB_Left	23.44	25.44	30	PASS
N78-3450-3550	30	80	DFT-16QAM	L	Inner_1RB_Right	22.24	24.24	30	PASS
N78-3450-3550	30	80	DFT-16QAM	L	Outer_Full	21.07	23.07	30	PASS
N78-3450-3550	30	80	DFT-64QAM	L	Inner_1RB_Left	21.26	23.26	30	PASS
N78-3450-3550	30	80	DFT-64QAM	L	Inner_1RB_Right	20.18	22.18	30	PASS
N78-3450-3550	30	80	DFT-64QAM	L	Outer_Full	20.49	22.49	30	PASS
N78-3450-3550	30	80	DFT-256QAM	L	Inner_1RB_Left	18.58	20.58	30	PASS
N78-3450-3550	30	80	DFT-256QAM	L	Inner_1RB_Right	17.31	19.31	30	PASS
N78-3450-3550	30	80	DFT-256QAM	L	Outer_Full	18.35	20.35	30	PASS
N78-3450-3550	30	80	DFT-PI2BPSK	M	Inner_1RB_Left	24.03	26.03	30	PASS
N78-3450-3550	30	80	DFT-PI2BPSK	M	Inner_1RB_Right	23.01	25.01	30	PASS
N78-3450-3550	30	80	DFT-PI2BPSK	M	Outer_Full	22.02	24.02	30	PASS
N78-3450-3550	30	80	DFT-QPSK	M	Inner_1RB_Left	24.08	26.08	30	PASS
N78-3450-3550	30	80	DFT-QPSK	M	Inner_1RB_Right	22.82	24.82	30	PASS
N78-3450-3550	30	80	DFT-QPSK	M	Outer_Full	21.81	23.81	30	PASS
N78-3450-3550	30	80	DFT-16QAM	M	Inner_1RB_Left	22.88	24.88	30	PASS
N78-3450-3550	30	80	DFT-16QAM	M	Inner_1RB_Right	21.95	23.95	30	PASS
N78-3450-3550	30	80	DFT-16QAM	M	Outer_Full	20.62	22.62	30	PASS
N78-3450-3550	30	80	DFT-64QAM	M	Inner_1RB_Left	21.01	23.01	30	PASS
N78-3450-3550	30	80	DFT-64QAM	M	Inner_1RB_Right	19.82	21.82	30	PASS
N78-3450-3550	30	80	DFT-64QAM	M	Outer_Full	20.14	22.14	30	PASS
N78-3450-3550	30	80	DFT-256QAM	M	Inner_1RB_Left	18.17	20.17	30	PASS
N78-3450-3550	30	80	DFT-256QAM	M	Inner_1RB_Right	17.20	19.20	30	PASS
N78-3450-3550	30	80	DFT-256QAM	M	Outer_Full	18.16	20.16	30	PASS
N78-3450-3550	30	80	DFT-PI2BPSK	H	Inner_1RB_Left	24.11	26.11	30	PASS
N78-3450-3550	30	80	DFT-PI2BPSK	H	Inner_1RB_Right	23.05	25.05	30	PASS



Unless otherwise agreed in writing, this document is issued by the Company subject to its General Conditions of Service printed overleaf, available on request or accessible at <http://www.sgs.com/en/Terms-and-Conditions.aspx> and, for electronic format documents, subject to Terms and Conditions for Electronic Documents at <http://www.sgs.com/en/Terms-and-Conditions/Terms-e-Documents.aspx>. Attention is drawn to the limitation of liability, indemnification and jurisdiction issues defined therein. Any holder of this document is advised that information contained hereon reflects the Company's findings at the time of its intervention only and within the limits of Client's instructions, if any. The Company's sole responsibility is to its Client and this document does not exonerate parties to a transaction from exercising all their rights and obligations under the transaction documents. This document cannot be reproduced except in full, without prior written approval of the Company. Any unauthorized alteration, forgery or falsification of the content or appearance of this document is unlawful and offenders may be prosecuted to the fullest extent of the law. Unless otherwise stated the results shown in this test report refer only to the sample(s) tested and such sample(s) are retained for 30 days only.

Attention: To check the authenticity of testing/inspection report & certificate, please contact us at telephone: (86-755) 8307 1443, or email: CN.Doccheck@sgs.com

South of No. 6 Plant, No. 1, Runsheng Road, Suzhou Industrial Park, Suzhou Area, China (Jiangsu) Pilot Free Trade Zone 215000
 中国·苏州·中国(江苏)自由贸易试验区苏州片区苏州工业园区润胜路1号的6号厂房南楼 邮编: 215000

t (86-512) 62992980 www.sgs.com.cn
 t (86-512) 62992980 sgs.china@sgs.com

Report No.: SEWM2306000194RG02

Rev.: 01

Page: 14 of 160

N78-3450-3550	30	80	DFT-PI2BPSK	H	Outer_Full	21.98	23.98	30	PASS
N78-3450-3550	30	80	DFT-QPSK	H	Inner_1RB_Left	24.04	26.04	30	PASS
N78-3450-3550	30	80	DFT-QPSK	H	Inner_1RB_Right	22.94	24.94	30	PASS
N78-3450-3550	30	80	DFT-QPSK	H	Outer_Full	21.59	23.59	30	PASS
N78-3450-3550	30	80	DFT-16QAM	H	Inner_1RB_Left	23.08	25.08	30	PASS
N78-3450-3550	30	80	DFT-16QAM	H	Inner_1RB_Right	21.63	23.63	30	PASS
N78-3450-3550	30	80	DFT-16QAM	H	Outer_Full	20.55	22.55	30	PASS
N78-3450-3550	30	80	DFT-64QAM	H	Inner_1RB_Left	20.81	22.81	30	PASS
N78-3450-3550	30	80	DFT-64QAM	H	Inner_1RB_Right	19.80	21.80	30	PASS
N78-3450-3550	30	80	DFT-64QAM	H	Outer_Full	20.20	22.20	30	PASS
N78-3450-3550	30	80	DFT-256QAM	H	Inner_1RB_Left	18.57	20.57	30	PASS
N78-3450-3550	30	80	DFT-256QAM	H	Inner_1RB_Right	17.19	19.19	30	PASS
N78-3450-3550	30	80	DFT-256QAM	H	Outer_Full	17.86	19.86	30	PASS
N78-3450-3550	30	90	DFT-PI2BPSK	L	Inner_1RB_Left	24.11	26.11	30	PASS
N78-3450-3550	30	90	DFT-PI2BPSK	L	Inner_1RB_Right	23.22	25.22	30	PASS
N78-3450-3550	30	90	DFT-PI2BPSK	L	Outer_Full	22.11	24.11	30	PASS
N78-3450-3550	30	90	DFT-QPSK	L	Inner_1RB_Left	23.87	25.87	30	PASS
N78-3450-3550	30	90	DFT-QPSK	L	Inner_1RB_Right	23.08	25.08	30	PASS
N78-3450-3550	30	90	DFT-QPSK	L	Outer_Full	21.86	23.86	30	PASS
N78-3450-3550	30	90	DFT-16QAM	L	Inner_1RB_Left	23.09	25.09	30	PASS
N78-3450-3550	30	90	DFT-16QAM	L	Inner_1RB_Right	21.85	23.85	30	PASS
N78-3450-3550	30	90	DFT-16QAM	L	Outer_Full	20.68	22.68	30	PASS
N78-3450-3550	30	90	DFT-64QAM	L	Inner_1RB_Left	21.10	23.10	30	PASS
N78-3450-3550	30	90	DFT-64QAM	L	Inner_1RB_Right	20.12	22.12	30	PASS
N78-3450-3550	30	90	DFT-64QAM	L	Outer_Full	20.04	22.04	30	PASS
N78-3450-3550	30	90	DFT-256QAM	L	Inner_1RB_Left	18.48	20.48	30	PASS
N78-3450-3550	30	90	DFT-256QAM	L	Inner_1RB_Right	17.38	19.38	30	PASS
N78-3450-3550	30	90	DFT-256QAM	L	Outer_Full	18.22	20.22	30	PASS
N78-3450-3550	30	90	DFT-PI2BPSK	M	Inner_1RB_Left	24.25	26.25	30	PASS
N78-3450-3550	30	90	DFT-PI2BPSK	M	Inner_1RB_Right	23.01	25.01	30	PASS
N78-3450-3550	30	90	DFT-PI2BPSK	M	Outer_Full	21.99	23.99	30	PASS
N78-3450-3550	30	90	DFT-QPSK	M	Inner_1RB_Left	24.14	26.14	30	PASS
N78-3450-3550	30	90	DFT-QPSK	M	Inner_1RB_Right	23.06	25.06	30	PASS
N78-3450-3550	30	90	DFT-QPSK	M	Outer_Full	21.51	23.51	30	PASS
N78-3450-3550	30	90	DFT-16QAM	M	Inner_1RB_Left	23.11	25.11	30	PASS
N78-3450-3550	30	90	DFT-16QAM	M	Inner_1RB_Right	21.83	23.83	30	PASS
N78-3450-3550	30	90	DFT-16QAM	M	Outer_Full	20.52	22.52	30	PASS



Unless otherwise agreed in writing, this document is issued by the Company subject to its General Conditions of Service printed overleaf, available on request or accessible at <http://www.sgs.com/en/Terms-and-Conditions.aspx> and, for electronic format documents, subject to Terms and Conditions for Electronic Documents at <http://www.sgs.com/en/Terms-and-Conditions/Terms-e-Documents.aspx>. Attention is drawn to the limitation of liability, indemnification and jurisdiction issues defined therein. Any holder of this document is advised that information contained hereon reflects the Company's findings at the time of its intervention only and within the limits of Client's instructions, if any. The Company's sole responsibility is to its Client and this document does not exonerate parties to a transaction from exercising all their rights and obligations under the transaction documents. This document cannot be reproduced except in full, without prior written approval of the Company. Any unauthorized alteration, forgery or falsification of the content or appearance of this document is unlawful and offenders may be prosecuted to the fullest extent of the law. Unless otherwise stated the results shown in this test report refer only to the sample(s) tested and such sample(s) are retained for 30 days only.

Attention: To check the authenticity of testing/inspection report & certificate, please contact us at telephone: (86-755) 8307 1443, or email: CN.Doccheck@sgs.com
 South of No. 6 Plant, No. 1, Runsheng Road, Suzhou Industrial Park, Suzhou Area, China (Jiangsu) Pilot Free Trade Zone 215000 t (86-512) 62992980 www.sgsgroup.com.cn
 中国·苏州·中国(江苏)自由贸易试验区苏州片区苏州工业园区润胜路1号的6号厂房南楼 邮编: 215000 t (86-512) 62992980 sgs.china@sgs.com



Report No.: SEWM2306000194RG02

Rev.: 01

Page: 15 of 160

N78-3450-3550	30	90	DFT-64QAM	M	Inner_1RB_Left	20.86	22.86	30	PASS
N78-3450-3550	30	90	DFT-64QAM	M	Inner_1RB_Right	19.77	21.77	30	PASS
N78-3450-3550	30	90	DFT-64QAM	M	Outer_Full	20.11	22.11	30	PASS
N78-3450-3550	30	90	DFT-256QAM	M	Inner_1RB_Left	18.26	20.26	30	PASS
N78-3450-3550	30	90	DFT-256QAM	M	Inner_1RB_Right	16.95	18.95	30	PASS
N78-3450-3550	30	90	DFT-256QAM	M	Outer_Full	17.96	19.96	30	PASS
N78-3450-3550	30	90	DFT-PI2BPSK	H	Inner_1RB_Left	24.19	26.19	30	PASS
N78-3450-3550	30	90	DFT-PI2BPSK	H	Inner_1RB_Right	22.95	24.95	30	PASS
N78-3450-3550	30	90	DFT-PI2BPSK	H	Outer_Full	21.95	23.95	30	PASS
N78-3450-3550	30	90	DFT-QPSK	H	Inner_1RB_Left	24.23	26.23	30	PASS
N78-3450-3550	30	90	DFT-QPSK	H	Inner_1RB_Right	22.77	24.77	30	PASS
N78-3450-3550	30	90	DFT-QPSK	H	Outer_Full	21.61	23.61	30	PASS
N78-3450-3550	30	90	DFT-16QAM	H	Inner_1RB_Left	23.17	25.17	30	PASS
N78-3450-3550	30	90	DFT-16QAM	H	Inner_1RB_Right	22.04	24.04	30	PASS
N78-3450-3550	30	90	DFT-16QAM	H	Outer_Full	20.84	22.84	30	PASS
N78-3450-3550	30	90	DFT-64QAM	H	Inner_1RB_Left	21.10	23.10	30	PASS
N78-3450-3550	30	90	DFT-64QAM	H	Inner_1RB_Right	19.95	21.95	30	PASS
N78-3450-3550	30	90	DFT-64QAM	H	Outer_Full	20.27	22.27	30	PASS
N78-3450-3550	30	90	DFT-256QAM	H	Inner_1RB_Left	18.28	20.28	30	PASS
N78-3450-3550	30	90	DFT-256QAM	H	Inner_1RB_Right	17.20	19.20	30	PASS
N78-3450-3550	30	90	DFT-256QAM	H	Outer_Full	18.04	20.04	30	PASS
N78-3450-3550	30	100	DFT-PI2BPSK	L	Inner_1RB_Left	24.05	26.05	30	PASS
N78-3450-3550	30	100	DFT-PI2BPSK	L	Inner_1RB_Right	22.83	24.83	30	PASS
N78-3450-3550	30	100	DFT-PI2BPSK	L	Outer_Full	22.32	24.32	30	PASS
N78-3450-3550	30	100	DFT-QPSK	L	Inner_1RB_Left	24.01	26.01	30	PASS
N78-3450-3550	30	100	DFT-QPSK	L	Inner_1RB_Right	23.03	25.03	30	PASS
N78-3450-3550	30	100	DFT-QPSK	L	Outer_Full	21.61	23.61	30	PASS
N78-3450-3550	30	100	DFT-16QAM	L	Inner_1RB_Left	23.31	25.31	30	PASS
N78-3450-3550	30	100	DFT-16QAM	L	Inner_1RB_Right	21.92	23.92	30	PASS
N78-3450-3550	30	100	DFT-16QAM	L	Outer_Full	20.56	22.56	30	PASS
N78-3450-3550	30	100	DFT-64QAM	L	Inner_1RB_Left	21.17	23.17	30	PASS
N78-3450-3550	30	100	DFT-64QAM	L	Inner_1RB_Right	19.81	21.81	30	PASS
N78-3450-3550	30	100	DFT-64QAM	L	Outer_Full	20.31	22.31	30	PASS
N78-3450-3550	30	100	DFT-256QAM	L	Inner_1RB_Left	18.36	20.36	30	PASS
N78-3450-3550	30	100	DFT-256QAM	L	Inner_1RB_Right	17.10	19.10	30	PASS
N78-3450-3550	30	100	DFT-256QAM	L	Outer_Full	18.00	20.00	30	PASS
N78-3450-3550	30	100	DFT-PI2BPSK	M	Inner_1RB_Left	24.19	26.19	30	PASS



Unless otherwise agreed in writing, this document is issued by the Company subject to its General Conditions of Service printed overleaf, available on request or accessible at <http://www.sgs.com/en/Terms-and-Conditions.aspx> and, for electronic format documents, subject to Terms and Conditions for Electronic Documents at <http://www.sgs.com/en/Terms-and-Conditions/Terms-e-Documents.aspx>. Attention is drawn to the limitation of liability, indemnification and jurisdiction issues defined therein. Any holder of this document is advised that information contained hereon reflects the Company's findings at the time of its intervention only and within the limits of Client's instructions, if any. The Company's sole responsibility is to its Client and this document does not exonerate parties to a transaction from exercising all their rights and obligations under the transaction documents. This document cannot be reproduced except in full, without prior written approval of the Company. Any unauthorized alteration, forgery or falsification of the content or appearance of this document is unlawful and offenders may be prosecuted to the fullest extent of the law. Unless otherwise stated the results shown in this test report refer only to the sample(s) tested and such sample(s) are retained for 30 days only.

Attention: To check the authenticity of testing/inspection report & certificate, please contact us at telephone: (86-755) 8307 1443, or email: CN.Doccheck@sgs.com

South of No. 6 Plant, No. 1, Runsheng Road, Suzhou Industrial Park, Suzhou Area, China (Jiangsu) Pilot Free Trade Zone 215000 t (86-512) 62992980 www.sgsgroup.com.cn
 中国·苏州·中国 (江苏) 自由贸易试验区苏州片区苏州工业园区润胜路1号的6号厂房南楼 邮编: 215000 t (86-512) 62992980 sgs.china@sgs.com

Report No.: SEWM2306000194RG02

Rev.: 01

Page: 16 of 160

N78-3450-3550	30	100	DFT-PI2BPSK	M	Inner_1RB_Right	22.99	24.99	30	PASS
N78-3450-3550	30	100	DFT-PI2BPSK	M	Outer_Full	22.01	24.01	30	PASS
N78-3450-3550	30	100	DFT-QPSK	M	Inner_1RB_Left	23.85	25.85	30	PASS
N78-3450-3550	30	100	DFT-QPSK	M	Inner_1RB_Right	22.86	24.86	30	PASS
N78-3450-3550	30	100	DFT-QPSK	M	Outer_Full	21.64	23.64	30	PASS
N78-3450-3550	30	100	DFT-16QAM	M	Inner_1RB_Left	22.89	24.89	30	PASS
N78-3450-3550	30	100	DFT-16QAM	M	Inner_1RB_Right	21.91	23.91	30	PASS
N78-3450-3550	30	100	DFT-16QAM	M	Outer_Full	20.84	22.84	30	PASS
N78-3450-3550	30	100	DFT-64QAM	M	Inner_1RB_Left	20.87	22.87	30	PASS
N78-3450-3550	30	100	DFT-64QAM	M	Inner_1RB_Right	20.03	22.03	30	PASS
N78-3450-3550	30	100	DFT-64QAM	M	Outer_Full	20.22	22.22	30	PASS
N78-3450-3550	30	100	DFT-256QAM	M	Inner_1RB_Left	18.59	20.59	30	PASS
N78-3450-3550	30	100	DFT-256QAM	M	Inner_1RB_Right	17.43	19.43	30	PASS
N78-3450-3550	30	100	DFT-256QAM	M	Outer_Full	18.11	20.11	30	PASS
N78-3450-3550	30	100	DFT-PI2BPSK	H	Inner_1RB_Left	24.20	26.20	30	PASS
N78-3450-3550	30	100	DFT-PI2BPSK	H	Inner_1RB_Right	22.91	24.91	30	PASS
N78-3450-3550	30	100	DFT-PI2BPSK	H	Outer_Full	22.00	24.00	30	PASS
N78-3450-3550	30	100	DFT-QPSK	H	Inner_1RB_Left	24.26	26.26	30	PASS
N78-3450-3550	30	100	DFT-QPSK	H	Inner_1RB_Right	22.94	24.94	30	PASS
N78-3450-3550	30	100	DFT-QPSK	H	Outer_Full	23.34	25.34	30	PASS
N78-3450-3550	30	100	DFT-16QAM	H	Inner_1RB_Left	22.09	24.09	30	PASS
N78-3450-3550	30	100	DFT-16QAM	H	Inner_1RB_Right	22.02	24.02	30	PASS
N78-3450-3550	30	100	DFT-16QAM	H	Outer_Full	20.93	22.93	30	PASS
N78-3450-3550	30	100	DFT-64QAM	H	Inner_1RB_Left	19.54	21.54	30	PASS
N78-3450-3550	30	100	DFT-64QAM	H	Inner_1RB_Right	19.79	21.79	30	PASS
N78-3450-3550	30	100	DFT-64QAM	H	Outer_Full	19.72	21.72	30	PASS
N78-3450-3550	30	100	DFT-256QAM	H	Inner_1RB_Left	18.44	20.44	30	PASS
N78-3450-3550	30	100	DFT-256QAM	H	Inner_1RB_Right	17.91	19.91	30	PASS
N78-3450-3550	30	100	DFT-256QAM	H	Outer_Full	17.96	19.96	30	PASS



Unless otherwise agreed in writing, this document is issued by the Company subject to its General Conditions of Service printed overleaf, available on request or accessible at <http://www.sgs.com/en/Terms-and-Conditions.aspx> and, for electronic format documents, subject to Terms and Conditions for Electronic Documents at <http://www.sgs.com/en/Terms-and-Conditions/Terms-e-Documents.aspx>. Attention is drawn to the limitation of liability, indemnification and jurisdiction issues defined therein. Any holder of this document is advised that information contained herein reflects the Company's findings at the time of its intervention only and within the limits of Client's instructions, if any. The Company's sole responsibility is to its Client and this document does not exonerate parties to a transaction from exercising all their rights and obligations under the transaction documents. This document cannot be reproduced except in full, without prior written approval of the Company. Any unauthorized alteration, forgery or falsification of the content or appearance of this document is unlawful and offenders may be prosecuted to the fullest extent of the law. Unless otherwise stated the results shown in this test report refer only to the sample(s) tested and such sample(s) are retained for 30 days only.

Attention: To check the authenticity of testing/inspection report & certificate, please contact us at telephone: (86-755) 8307 1443, or email: CN.Doccheck@sgs.com

South of No. 6 Plant, No. 1, Runsheng Road, Suzhou Industrial Park, Suzhou Area, China (Jiangsu) Pilot Free Trade Zone 215000
 中国·苏州·中国 (江苏) 自由贸易试验区苏州片区苏州工业园区润胜路1号的6号厂房南楼 邮编: 215000

t (86-512) 62992980 www.sgs.com.cn
 t (86-512) 62992980 sgs.china@sgs.com

Peak-to-Average Ratio for SA

Test Result

Band	SCS	Band width	Modulation	Chan nel	RB Config	Duty Cycle	Factor	Result	Limit	Verdict
N78-3450-3550	30	100	DFT-256QAM	L	Outer_Full	100%	0.00	9.09	≤13	PASS
N78-3450-3550	30	100	CP-256QAM	L	Outer_Full	100%	0.00	9.83	≤13	PASS
N78-3450-3550	30	100	DFT-256QAM	M	Outer_Full	100%	0.00	9.49	≤13	PASS
N78-3450-3550	30	100	CP-256QAM	M	Outer_Full	100%	0.00	9.38	≤13	PASS
N78-3450-3550	30	100	DFT-256QAM	H	Outer_Full	100%	0.00	9.86	≤13	PASS
N78-3450-3550	30	100	CP-256QAM	H	Outer_Full	100%	0.00	9.94	≤13	PASS



Unless otherwise agreed in writing, this document is issued by the Company subject to its General Conditions of Service printed overleaf, available on request or accessible at <http://www.sgs.com/en/Terms-and-Conditions.aspx> and, for electronic format documents, subject to Terms and Conditions for Electronic Documents at <http://www.sgs.com/en/Terms-and-Conditions/Terms-e-Documents.aspx>. Attention is drawn to the limitation of liability, indemnification and jurisdiction issues defined therein. Any holder of this document is advised that information contained hereon reflects the Company's findings at the time of its intervention only and within the limits of Client's instructions, if any. The Company's sole responsibility is to its Client and this document does not exonerate parties to a transaction from exercising all their rights and obligations under the transaction documents. This document cannot be reproduced except in full, without prior written approval of the Company. Any unauthorized alteration, forgery or falsification of the content or appearance of this document is unlawful and offenders may be prosecuted to the fullest extent of the law. Unless otherwise stated the results shown in this test report refer only to the sample(s) tested and such sample(s) are retained for 30 days only.

Attention: To check the authenticity of testing /inspection report & certificate, please contact us at telephone: (86-755) 8307 1443, or email: CN.Doccheck@sgs.com

South of No. 6 Plant, No. 1, Runsheng Road, Suzhou Industrial Park, Suzhou Area, China (Jiangsu) Pilot Free Trade Zone 215000
 中国·苏州·中国(江苏)自由贸易试验区苏州片区苏州工业园区润胜路1号的6号厂房南楼 邮编: 215000

t (86-512) 62992980 www.sgs.com.cn
 t (86-512) 62992980 sgs.china@sgs.com

Test Graphs

<p>1-N78-3450-3550-PC3-30-100-L-1-DFT-256QAM-Outer_Full-270@0-Ant1-9.09-100%-0.00-9.09-PASS-≤1</p> <p style="text-align: center;">3</p>	<p>1-N78-3450-3550-PC3-30-100-L-2-CP-256QAM-Outer_Full-273@0-Ant1-9.83-100%-0.00-9.83-PASS-≤1</p> <p style="text-align: center;">3</p>
<p>1-N78-3450-3550-PC3-30-100-M-1-DFT-256QAM-Outer_Full-270@0-Ant1-9.49-100%-0.00-9.49-PASS-≤1</p> <p style="text-align: center;">13</p>	<p>1-N78-3450-3550-PC3-30-100-M-2-CP-256QAM-Outer_Full-273@0-Ant1-9.38-100%-0.00-9.38-PASS-≤1</p> <p style="text-align: center;">3</p>

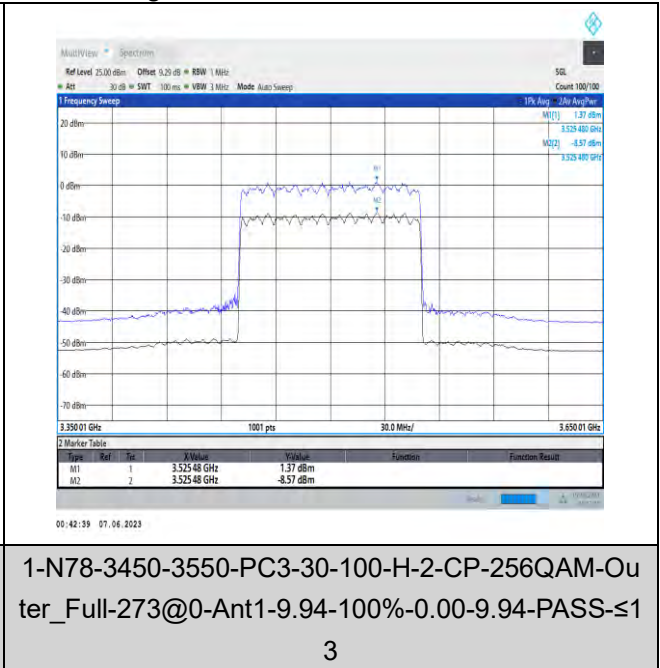
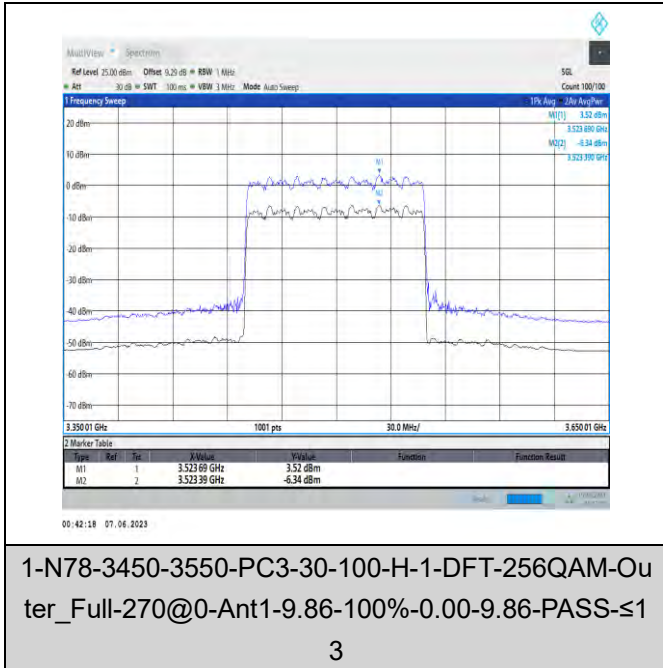


Unless otherwise agreed in writing, this document is issued by the Company subject to its General Conditions of Service printed overleaf, available on request or accessible at <http://www.sgs.com/en/Terms-and-Conditions.aspx> and, for electronic format documents, subject to Terms and Conditions for Electronic Documents at <http://www.sgs.com/en/Terms-and-Conditions/Terms-e-Documents.aspx>. Attention is drawn to the limitation of liability, indemnification and jurisdiction issues defined therein. Any holder of this document is advised that information contained hereon reflects the Company's findings at the time of its intervention only and within the limits of Client's instructions, if any. The Company's sole responsibility is to its Client and this document does not exonerate parties to a transaction from exercising all their rights and obligations under the transaction documents. This document cannot be reproduced except in full, without prior written approval of the Company. Any unauthorized alteration, forgery or falsification of the content or appearance of this document is unlawful and offenders may be prosecuted to the fullest extent of the law. Unless otherwise stated the results shown in this test report refer only to the sample(s) tested and such sample(s) are retained for 30 days only.

Attention: To check the authenticity of testing/inspection report & certificate, please contact us at telephone: (86-755) 8307 1443, or email: CN.Doccheck@sgs.com

South of No. 6 Plant, No. 1, Runsheng Road, Suzhou Industrial Park, Suzhou Area, China (Jiangsu) Pilot Free Trade Zone 215000
 中国·苏州·中国(江苏)自由贸易试验区苏州片区苏州工业园区润胜路1号的6号厂房南面 邮编: 215000

t (86-512) 62992980 www.sgs.com.cn
 t (86-512) 62992980 sgs.china@sgs.com



1-N78-3450-3550-PC3-30-100-H-1-DFT-256QAM-Outer_Full-270@0-Ant1-9.86-100%-0.00-9.86-PASS-≤1

3

1-N78-3450-3550-PC3-30-100-H-2-CP-256QAM-Outer_Full-273@0-Ant1-9.94-100%-0.00-9.94-PASS-≤1

3



Unless otherwise agreed in writing, this document is issued by the Company subject to its General Conditions of Service printed overleaf, available on request or accessible at <http://www.sgs.com/en/Terms-and-Conditions.aspx> and, for electronic format documents, subject to Terms and Conditions for Electronic Documents at <http://www.sgs.com/en/Terms-and-Conditions/Terms-e-Documents.aspx>. Attention is drawn to the limitation of liability, indemnification and jurisdiction issues defined therein. Any holder of this document is advised that information contained hereon reflects the Company's findings at the time of its intervention only and within the limits of Client's instructions, if any. The Company's sole responsibility is to its Client and this document does not exonerate parties to a transaction from exercising all their rights and obligations under the transaction documents. This document cannot be reproduced except in full, without prior written approval of the Company. Any unauthorized alteration, forgery or falsification of the content or appearance of this document is unlawful and offenders may be prosecuted to the fullest extent of the law. Unless otherwise stated the results shown in this test report refer only to the sample(s) tested and such sample(s) are retained for 30 days only.

Attention: To check the authenticity of testing /inspection report & certificate, please contact us at telephone: (86-755) 8307 1443, or email: CN.Doccheck@sgs.com

South of No. 6 Plant, No. 1, Runsheng Road, Suzhou Industrial Park, Suzhou Area, China (Jiangsu) Pilot Free Trade Zone 215000
 中国·苏州·中国(江苏)自由贸易试验区苏州片区苏州工业园区润胜路1号的6号厂房南面 邮编: 215000

t (86-512) 62992980 www.sgs.com.cn
 t (86-512) 62992980 sgs.china@sgs.com

Modulation characteristics for SA

Test Result

Band	SCS	Bandwidth	Modulation	Channel	RB Config	Result	Verdict
N78-3450-3550	30	100	DFT-PI2BPSK	M	Outer_Full	see graph	PASS
N78-3450-3550	30	100	DFT-QPSK	M	Outer_Full	see graph	PASS
N78-3450-3550	30	100	DFT-16QAM	M	Outer_Full	see graph	PASS
N78-3450-3550	30	100	DFT-64QAM	M	Outer_Full	see graph	PASS
N78-3450-3550	30	100	DFT-256QAM	M	Outer_Full	see graph	PASS
N78-3450-3550	30	100	CP-QPSK	M	Outer_Full	see graph	PASS
N78-3450-3550	30	100	CP-16QAM	M	Outer_Full	see graph	PASS
N78-3450-3550	30	100	CP-64QAM	M	Outer_Full	see graph	PASS
N78-3450-3550	30	100	CP-256QAM	M	Outer_Full	see graph	PASS



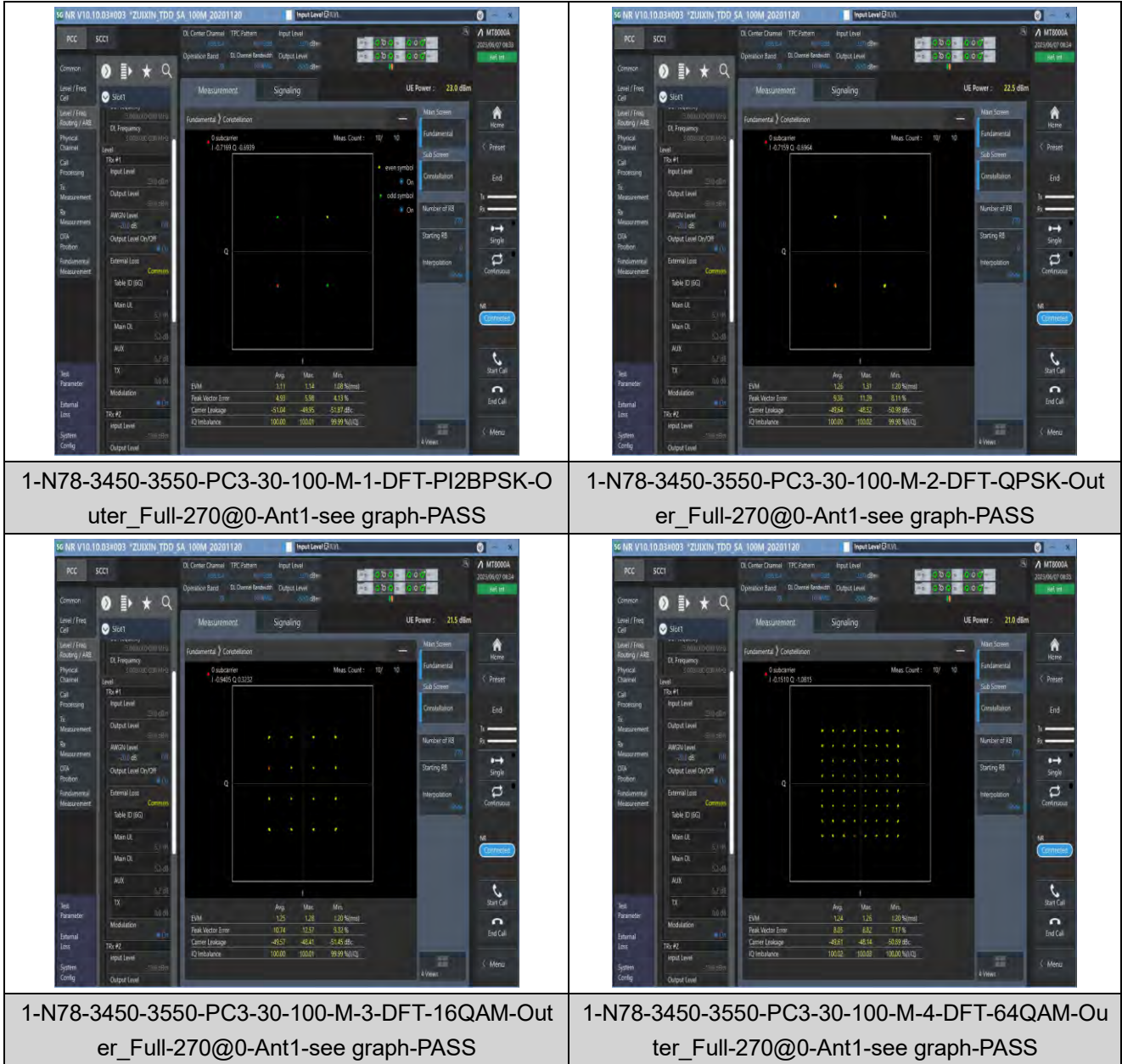
Unless otherwise agreed in writing, this document is issued by the Company subject to its General Conditions of Service printed overleaf, available on request or accessible at <http://www.sgs.com/en/Terms-and-Conditions.aspx> and, for electronic format documents, subject to Terms and Conditions for Electronic Documents at <http://www.sgs.com/en/Terms-and-Conditions/Terms-e-Documents.aspx>. Attention is drawn to the limitation of liability, indemnification and jurisdiction issues defined therein. Any holder of this document is advised that information contained hereon reflects the Company's findings at the time of its intervention only and within the limits of Client's instructions, if any. The Company's sole responsibility is to its Client and this document does not exonerate parties to a transaction from exercising all their rights and obligations under the transaction documents. This document cannot be reproduced except in full, without prior written approval of the Company. Any unauthorized alteration, forgery or falsification of the content or appearance of this document is unlawful and offenders may be prosecuted to the fullest extent of the law. Unless otherwise stated the results shown in this test report refer only to the sample(s) tested and such sample(s) are retained for 30 days only.

Attention: To check the authenticity of testing/inspection report & certificate, please contact us at telephone: (86-755) 8307 1443, or email: CN.Doccheck@sgs.com

South of No. 6 Plant, No. 1, Runsheng Road, Suzhou Industrial Park, Suzhou Area, China (Jiangsu) Pilot Free Trade Zone 215000
 中国·苏州·中国(江苏)自由贸易试验区苏州片区苏州工业园区润胜路1号的6号厂房南楼 邮编: 215000

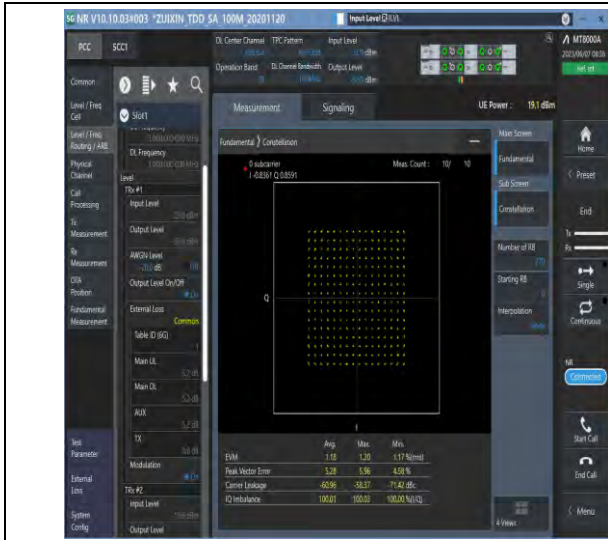
t (86-512) 62992980 www.sgs.com.cn
 t (86-512) 62992980 sgs.china@sgs.com

Test Graphs

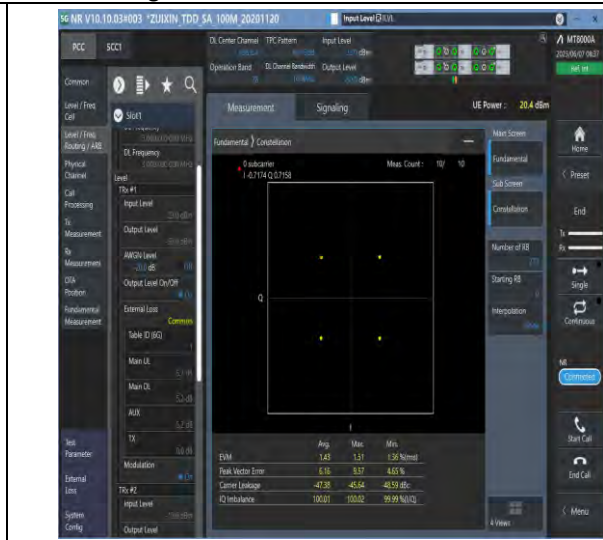


Unless otherwise agreed in writing, this document is issued by the Company subject to its General Conditions of Service printed overleaf, available on request or accessible at <http://www.sgs.com/en/Terms-and-Conditions.aspx> and, for electronic format documents, subject to Terms and Conditions for Electronic Documents at <http://www.sgs.com/en/Terms-and-Conditions/Terms-e-Documents.aspx>. Attention is drawn to the limitation of liability, indemnification and jurisdiction issues defined therein. Any holder of this document is advised that information contained hereon reflects the Company's findings at the time of its intervention only and within the limits of Client's instructions, if any. The Company's sole responsibility is to its Client and this document does not exonerate parties to a transaction from exercising all their rights and obligations under the transaction documents. This document cannot be reproduced except in full, without prior written approval of the Company. Any unauthorized alteration, forgery or falsification of the content or appearance of this document is unlawful and offenders may be prosecuted to the fullest extent of the law. Unless otherwise stated the results shown in this test report refer only to the sample(s) tested and such sample(s) are retained for 30 days only.

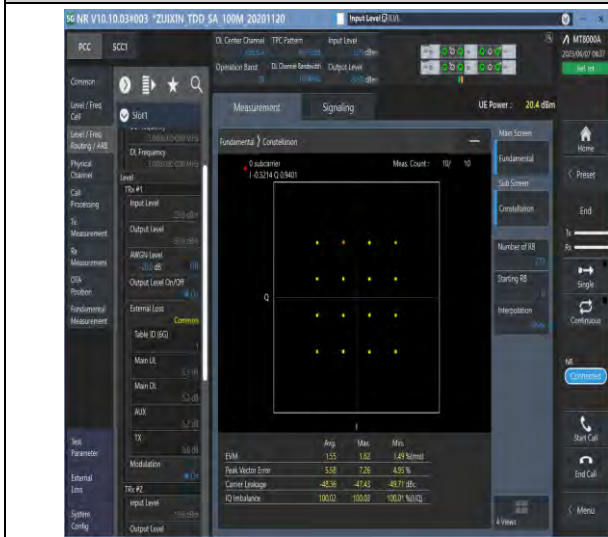
Attention: To check the authenticity of testing/inspection report & certificate, please contact us at telephone: (86-755) 8307 1443, or email: CN.Doccheck@sgs.com
 South of No. 6 Plant, No. 1, Runsheng Road, Suzhou Industrial Park, Suzhou Area, China (Jiangsu) Pilot Free Trade Zone 215000 t (86-512) 62992980 www.sgsgroup.com.cn
 中国·苏州·中国(江苏)自由贸易试验区苏州片区苏州工业园区润胜路1号的6号厂房南座 邮编: 215000 t (86-512) 62992980 sgs.china@sgs.com



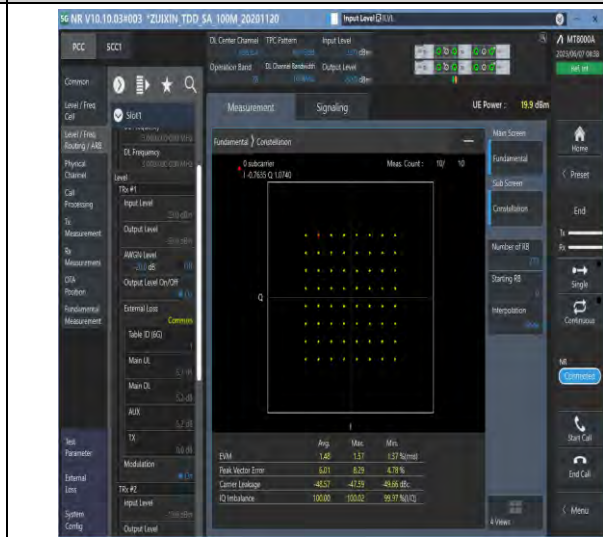
1-N78-3450-3550-PC3-30-100-M-5-DFT-256QAM-Outer_Full-270@0-Ant1-see graph-PASS



1-N78-3450-3550-PC3-30-100-M-6-CP-QPSK-Outer_Full-273@0-Ant1-see graph-PASS



1-N78-3450-3550-PC3-30-100-M-7-CP-16QAM-Outer_Full-273@0-Ant1-see graph-PASS

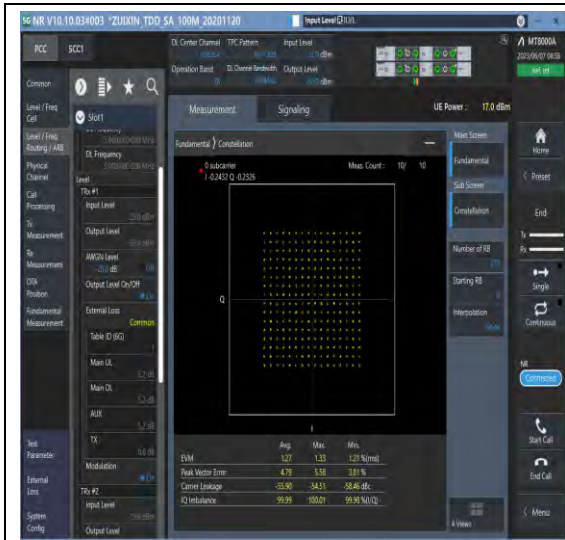


1-N78-3450-3550-PC3-30-100-M-8-CP-64QAM-Outer_Full-273@0-Ant1-see graph-PASS



Unless otherwise agreed in writing, this document is issued by the Company subject to its General Conditions of Service printed overleaf, available on request or accessible at <http://www.sgs.com/en/Terms-and-Conditions.aspx> and, for electronic format documents, subject to Terms and Conditions for Electronic Documents at <http://www.sgs.com/en/Terms-and-Conditions/Terms-e-Documents.aspx>. Attention is drawn to the limitation of liability, indemnification and jurisdiction issues defined therein. Any holder of this document is advised that information contained hereon reflects the Company's findings at the time of its intervention only and within the limits of Client's instructions, if any. The Company's sole responsibility is to its Client and this document does not exonerate parties to a transaction from exercising all their rights and obligations under the transaction documents. This document cannot be reproduced except in full, without prior written approval of the Company. Any unauthorized alteration, forgery or falsification of the content or appearance of this document is unlawful and offenders may be prosecuted to the fullest extent of the law. Unless otherwise stated the results shown in this test report refer only to the sample(s) tested and such sample(s) are retained for 30 days only.

Attention: To check the authenticity of testing/inspection report & certificate, please contact us at telephone: (86-755) 8307 1443, or email: CN.Doccheck@sgs.com
 South of No. 6 Plant, No. 1, Runsheng Road, Suzhou Industrial Park, Suzhou Area, China (Jiangsu) Pilot Free Trade Zone 215000 t (86-512) 62992980 www.sgs.com.cn
 中国·苏州·中国 (江苏) 自由贸易试验区苏州片区苏州工业园区润胜路1号的6号厂房南座 邮编: 215000 t (86-512) 62992980 sgs.china@sgs.com



1-N78-3450-3550-PC3-30-100-M-9-CP-256Q
AM-Outer_Full-273@0-Ant1-see graph-PASS



Unless otherwise agreed in writing, this document is issued by the Company subject to its General Conditions of Service printed overleaf, available on request or accessible at <http://www.sgs.com/en/Terms-and-Conditions.aspx> and, for electronic format documents, subject to Terms and Conditions for Electronic Documents at <http://www.sgs.com/en/Terms-and-Conditions/Terms-e-Documents.aspx>. Attention is drawn to the limitation of liability, indemnification and jurisdiction issues defined therein. Any holder of this document is advised that information contained hereon reflects the Company's findings at the time of its intervention only and within the limits of Client's instructions, if any. The Company's sole responsibility is to its Client and this document does not exonerate parties to a transaction from exercising all their rights and obligations under the transaction documents. This document cannot be reproduced except in full, without prior written approval of the Company. Any unauthorized alteration, forgery or falsification of the content or appearance of this document is unlawful and offenders may be prosecuted to the fullest extent of the law. Unless otherwise stated the results shown in this test report refer only to the sample(s) tested and such sample(s) are retained for 30 days only.

Attention: To check the authenticity of testing /inspection report & certificate, please contact us at telephone: (86-755) 8307 1443, or email: CN.Doccheck@sgs.com

South of No. 6 Plant, No. 1, Runsheng Road, Suzhou Industrial Park, Suzhou Area, China (Jiangsu) Pilot Free Trade Zone 215000
中国·苏州·中国 (江苏) 自由贸易试验区苏州片区苏州工业园区润胜路1号的6号厂房南楼 邮编: 215000

t (86-512) 62992980 www.sgs.com.cn
t (86-512) 62992980 sgs.china@sgs.com

26dB Bandwidth and Occupied Bandwidth for SA

Test Result

Band	SCS	Bandwidth	Modulation	Channel	RB Config	Result (99%)	Result (26dB)	Verdict
N78-3450-3550	30	10	DFT-QPSK	L	Outer_Full	8.577	9.460	PASS
N78-3450-3550	30	10	DFT-PI2BPSK	L	Outer_Full	8.6	9.420	PASS
N78-3450-3550	30	10	DFT-16QAM	L	Outer_Full	8.56	9.520	PASS
N78-3450-3550	30	10	DFT-64QAM	L	Outer_Full	8.584	9.420	PASS
N78-3450-3550	30	10	DFT-256QAM	L	Outer_Full	8.59	9.320	PASS
N78-3450-3550	30	10	CP-QPSK	L	Outer_Full	8.589	9.500	PASS
N78-3450-3550	30	10	CP-16QAM	L	Outer_Full	8.584	9.480	PASS
N78-3450-3550	30	10	CP-64QAM	L	Outer_Full	8.568	9.400	PASS
N78-3450-3550	30	10	CP-256QAM	L	Outer_Full	8.566	9.300	PASS
N78-3450-3550	30	10	DFT-QPSK	M	Outer_Full	8.575	9.380	PASS
N78-3450-3550	30	10	DFT-PI2BPSK	M	Outer_Full	8.614	9.620	PASS
N78-3450-3550	30	10	DFT-16QAM	M	Outer_Full	8.562	9.480	PASS
N78-3450-3550	30	10	DFT-64QAM	M	Outer_Full	8.581	9.460	PASS
N78-3450-3550	30	10	DFT-256QAM	M	Outer_Full	8.595	9.320	PASS
N78-3450-3550	30	10	CP-QPSK	M	Outer_Full	8.577	9.520	PASS
N78-3450-3550	30	10	CP-16QAM	M	Outer_Full	8.578	9.520	PASS
N78-3450-3550	30	10	CP-64QAM	M	Outer_Full	8.569	9.400	PASS
N78-3450-3550	30	10	CP-256QAM	M	Outer_Full	8.565	9.460	PASS
N78-3450-3550	30	10	DFT-QPSK	H	Outer_Full	8.587	9.460	PASS
N78-3450-3550	30	10	DFT-PI2BPSK	H	Outer_Full	8.597	9.420	PASS
N78-3450-3550	30	10	DFT-16QAM	H	Outer_Full	8.575	9.400	PASS
N78-3450-3550	30	10	DFT-64QAM	H	Outer_Full	8.584	9.460	PASS
N78-3450-3550	30	10	DFT-256QAM	H	Outer_Full	8.597	9.400	PASS
N78-3450-3550	30	10	CP-QPSK	H	Outer_Full	8.579	9.500	PASS
N78-3450-3550	30	10	CP-16QAM	H	Outer_Full	8.577	9.460	PASS
N78-3450-3550	30	10	CP-64QAM	H	Outer_Full	8.566	9.420	PASS
N78-3450-3550	30	10	CP-256QAM	H	Outer_Full	8.565	9.380	PASS
N78-3450-3550	30	15	DFT-QPSK	L	Outer_Full	12.908	14.190	PASS
N78-3450-3550	30	15	DFT-PI2BPSK	L	Outer_Full	12.889	14.130	PASS
N78-3450-3550	30	15	DFT-16QAM	L	Outer_Full	12.849	14.160	PASS



Unless otherwise agreed in writing, this document is issued by the Company subject to its General Conditions of Service printed overleaf, available on request or accessible at <http://www.sgs.com/en/Terms-and-Conditions.aspx> and, for electronic format documents, subject to Terms and Conditions for Electronic Documents at <http://www.sgs.com/en/Terms-and-Conditions/Terms-e-Documents.aspx>. Attention is drawn to the limitation of liability, indemnification and jurisdiction issues defined therein. Any holder of this document is advised that information contained herein reflects the Company's findings at the time of its intervention only and within the limits of Client's instructions, if any. The Company's sole responsibility is to its Client and this document does not exonerate parties to a transaction from exercising all their rights and obligations under the transaction documents. This document cannot be reproduced except in full, without prior written approval of the Company. Any unauthorized alteration, forgery or falsification of the content or appearance of this document is unlawful and offenders may be prosecuted to the fullest extent of the law. Unless otherwise stated the results shown in this test report refer only to the sample(s) tested and such sample(s) are retained for 30 days only.

Attention: To check the authenticity of testing / inspection report & certificate, please contact us at telephone: (86-755) 8307 1443, or email: CN.Doccheck@sgs.com

South of No. 6 Plant, No. 1, Runsheng Road, Suzhou Industrial Park, Suzhou Area, China (Jiangsu) Pilot Free Trade Zone 215000
 中国·苏州·中国 (江苏) 自由贸易试验区苏州片区苏州工业园区润胜路1号的6号厂房南楼 邮编: 215000

t (86-512) 62992980 www.sgs.com.cn
 t (86-512) 62992980 sgs.china@sgs.com



Report No.: SEWM2306000194RG02

Rev.: 01

Page: 25 of 160

N78-3450-3550	30	15	DFT-64QAM	L	Outer_Full	12.895	14.130	PASS
N78-3450-3550	30	15	DFT-256QAM	L	Outer_Full	12.873	14.130	PASS
N78-3450-3550	30	15	CP-QPSK	L	Outer_Full	13.575	14.760	PASS
N78-3450-3550	30	15	CP-16QAM	L	Outer_Full	13.582	14.640	PASS
N78-3450-3550	30	15	CP-64QAM	L	Outer_Full	13.597	14.790	PASS
N78-3450-3550	30	15	CP-256QAM	L	Outer_Full	13.568	14.730	PASS
N78-3450-3550	30	15	DFT-QPSK	M	Outer_Full	12.884	14.190	PASS
N78-3450-3550	30	15	DFT-PI2BPSK	M	Outer_Full	12.895	14.220	PASS
N78-3450-3550	30	15	DFT-16QAM	M	Outer_Full	12.87	14.160	PASS
N78-3450-3550	30	15	DFT-64QAM	M	Outer_Full	12.862	14.040	PASS
N78-3450-3550	30	15	DFT-256QAM	M	Outer_Full	12.884	14.160	PASS
N78-3450-3550	30	15	CP-QPSK	M	Outer_Full	13.574	14.760	PASS
N78-3450-3550	30	15	CP-16QAM	M	Outer_Full	13.578	14.760	PASS
N78-3450-3550	30	15	CP-64QAM	M	Outer_Full	13.59	14.850	PASS
N78-3450-3550	30	15	CP-256QAM	M	Outer_Full	13.574	14.760	PASS
N78-3450-3550	30	15	DFT-QPSK	H	Outer_Full	12.869	14.130	PASS
N78-3450-3550	30	15	DFT-PI2BPSK	H	Outer_Full	12.885	14.070	PASS
N78-3450-3550	30	15	DFT-16QAM	H	Outer_Full	12.832	14.160	PASS
N78-3450-3550	30	15	DFT-64QAM	H	Outer_Full	12.884	14.070	PASS
N78-3450-3550	30	15	DFT-256QAM	H	Outer_Full	12.866	14.100	PASS
N78-3450-3550	30	15	CP-QPSK	H	Outer_Full	13.554	14.640	PASS
N78-3450-3550	30	15	CP-16QAM	H	Outer_Full	13.582	14.730	PASS
N78-3450-3550	30	15	CP-64QAM	H	Outer_Full	13.564	14.790	PASS
N78-3450-3550	30	15	CP-256QAM	H	Outer_Full	13.562	14.640	PASS
N78-3450-3550	30	20	DFT-QPSK	L	Outer_Full	17.863	19.240	PASS
N78-3450-3550	30	20	DFT-PI2BPSK	L	Outer_Full	17.863	19.200	PASS
N78-3450-3550	30	20	DFT-16QAM	L	Outer_Full	17.848	19.200	PASS
N78-3450-3550	30	20	DFT-64QAM	L	Outer_Full	17.939	19.280	PASS
N78-3450-3550	30	20	DFT-256QAM	L	Outer_Full	17.784	19.040	PASS
N78-3450-3550	30	20	CP-QPSK	L	Outer_Full	18.184	19.520	PASS
N78-3450-3550	30	20	CP-16QAM	L	Outer_Full	18.183	19.520	PASS
N78-3450-3550	30	20	CP-64QAM	L	Outer_Full	18.204	19.560	PASS
N78-3450-3550	30	20	CP-256QAM	L	Outer_Full	18.224	19.480	PASS
N78-3450-3550	30	20	DFT-QPSK	M	Outer_Full	17.895	19.120	PASS
N78-3450-3550	30	20	DFT-PI2BPSK	M	Outer_Full	17.868	19.360	PASS
N78-3450-3550	30	20	DFT-16QAM	M	Outer_Full	17.858	19.200	PASS
N78-3450-3550	30	20	DFT-64QAM	M	Outer_Full	17.986	19.320	PASS



Unless otherwise agreed in writing, this document is issued by the Company subject to its General Conditions of Service printed overleaf, available on request or accessible at <http://www.sgs.com/en/Terms-and-Conditions.aspx> and, for electronic format documents, subject to Terms and Conditions for Electronic Documents at <http://www.sgs.com/en/Terms-and-Conditions/Terms-e-Documents.aspx>. Attention is drawn to the limitation of liability, indemnification and jurisdiction issues defined therein. Any holder of this document is advised that information contained herein reflects the Company's findings at the time of its intervention only and within the limits of Client's instructions, if any. The Company's sole responsibility is to its Client and this document does not exonerate parties to a transaction from exercising all their rights and obligations under the transaction documents. This document cannot be reproduced except in full, without prior written approval of the Company. Any unauthorized alteration, forgery or falsification of the content or appearance of this document is unlawful and offenders may be prosecuted to the fullest extent of the law. Unless otherwise stated the results shown in this test report refer only to the sample(s) tested and such sample(s) are retained for 30 days only.

Attention: To check the authenticity of testing/inspection report & certificate, please contact us at telephone: (86-755) 8307 1443, or email: CN.Doccheck@sgs.com

South of No. 6 Plant, No. 1, Runsheng Road, Suzhou Industrial Park, Suzhou Area, China (Jiangsu) Pilot Free Trade Zone 215000
 中国·苏州·中国(江苏)自由贸易试验区苏州片区苏州工业园区润胜路1号的6号厂房南面 邮编: 215000

t (86-512) 62992980 www.sgs.com.cn
 t (86-512) 62992980 sgs.china@sgs.com

N78-3450-3550	30	20	DFT-256QAM	M	Outer_Full	17.818	19.080	PASS
N78-3450-3550	30	20	CP-QPSK	M	Outer_Full	18.188	19.560	PASS
N78-3450-3550	30	20	CP-16QAM	M	Outer_Full	18.201	19.600	PASS
N78-3450-3550	30	20	CP-64QAM	M	Outer_Full	18.219	19.600	PASS
N78-3450-3550	30	20	CP-256QAM	M	Outer_Full	18.215	19.640	PASS
N78-3450-3550	30	20	DFT-QPSK	H	Outer_Full	17.891	19.120	PASS
N78-3450-3550	30	20	DFT-PI2BPSK	H	Outer_Full	17.873	19.360	PASS
N78-3450-3550	30	20	DFT-16QAM	H	Outer_Full	17.693	18.680	PASS
N78-3450-3550	30	20	DFT-64QAM	H	Outer_Full	17.935	19.320	PASS
N78-3450-3550	30	20	DFT-256QAM	H	Outer_Full	17.847	19.160	PASS
N78-3450-3550	30	20	CP-QPSK	H	Outer_Full	18.166	19.520	PASS
N78-3450-3550	30	20	CP-16QAM	H	Outer_Full	18.192	19.480	PASS
N78-3450-3550	30	20	CP-64QAM	H	Outer_Full	18.222	19.720	PASS
N78-3450-3550	30	20	CP-256QAM	H	Outer_Full	18.182	19.520	PASS
N78-3450-3550	30	25	DFT-QPSK	L	Outer_Full	22.867	24.450	PASS
N78-3450-3550	30	25	DFT-PI2BPSK	L	Outer_Full	22.869	24.450	PASS
N78-3450-3550	30	25	DFT-16QAM	L	Outer_Full	22.809	24.40	PASS
N78-3450-3550	30	25	DFT-64QAM	L	Outer_Full	22.899	24.600	PASS
N78-3450-3550	30	25	DFT-256QAM	L	Outer_Full	22.814	24.350	PASS
N78-3450-3550	30	25	CP-QPSK	L	Outer_Full	23.249	24.850	PASS
N78-3450-3550	30	25	CP-16QAM	L	Outer_Full	23.252	25.000	PASS
N78-3450-3550	30	25	CP-64QAM	L	Outer_Full	23.235	24.750	PASS
N78-3450-3550	30	25	CP-256QAM	L	Outer_Full	23.175	24.750	PASS
N78-3450-3550	30	25	DFT-QPSK	M	Outer_Full	22.922	24.450	PASS
N78-3450-3550	30	25	DFT-PI2BPSK	M	Outer_Full	22.887	24.400	PASS
N78-3450-3550	30	25	DFT-16QAM	M	Outer_Full	22.836	24.350	PASS
N78-3450-3550	30	25	DFT-64QAM	M	Outer_Full	22.899	24.600	PASS
N78-3450-3550	30	25	DFT-256QAM	M	Outer_Full	22.804	24.400	PASS
N78-3450-3550	30	25	CP-QPSK	M	Outer_Full	23.235	24.750	PASS
N78-3450-3550	30	25	CP-16QAM	M	Outer_Full	23.213	25.000	PASS
N78-3450-3550	30	25	CP-64QAM	M	Outer_Full	23.233	24.800	PASS
N78-3450-3550	30	25	CP-256QAM	M	Outer_Full	23.18	24.700	PASS
N78-3450-3550	30	25	DFT-QPSK	H	Outer_Full	22.942	24.350	PASS
N78-3450-3550	30	25	DFT-PI2BPSK	H	Outer_Full	22.877	24.400	PASS
N78-3450-3550	30	25	DFT-16QAM	H	Outer_Full	22.819	24.300	PASS
N78-3450-3550	30	25	DFT-64QAM	H	Outer_Full	22.901	24.650	PASS
N78-3450-3550	30	25	DFT-256QAM	H	Outer_Full	22.816	24.400	PASS



Unless otherwise agreed in writing, this document is issued by the Company subject to its General Conditions of Service printed overleaf, available on request or accessible at <http://www.sgs.com/en/Terms-and-Conditions.aspx> and, for electronic format documents, subject to Terms and Conditions for Electronic Documents at <http://www.sgs.com/en/Terms-and-Conditions/Terms-e-Documents.aspx>. Attention is drawn to the limitation of liability, indemnification and jurisdiction issues defined therein. Any holder of this document is advised that information contained herein reflects the Company's findings at the time of its intervention only and within the limits of Client's instructions, if any. The Company's sole responsibility is to its Client and this document does not exonerate parties to a transaction from exercising all their rights and obligations under the transaction documents. This document cannot be reproduced except in full, without prior written approval of the Company. Any unauthorized alteration, forgery or falsification of the content or appearance of this document is unlawful and offenders may be prosecuted to the fullest extent of the law. Unless otherwise stated the results shown in this test report refer only to the sample(s) tested and such sample(s) are retained for 30 days only.

Attention: To check the authenticity of testing/inspection report & certificate, please contact us at telephone: (86-755) 8307 1443, or email: CN.Doccheck@sgs.com

South of No. 6 Plant, No. 1, Runsheng Road, Suzhou Industrial Park, Suzhou Area, China (Jiangsu) Pilot Free Trade Zone 215000
 中国·苏州·中国(江苏)自由贸易试验区苏州片区苏州工业园区润胜路1号的6号厂房南楼 邮编: 215000

t (86-512) 62992980 www.sgs.com.cn
 t (86-512) 62992980 sgs.china@sgs.com

N78-3450-3550	30	25	CP-QPSK	H	Outer_Full	23.24	24.850	PASS
N78-3450-3550	30	25	CP-16QAM	H	Outer_Full	23.244	25.100	PASS
N78-3450-3550	30	25	CP-64QAM	H	Outer_Full	23.246	24.850	PASS
N78-3450-3550	30	25	CP-256QAM	H	Outer_Full	23.171	24.700	PASS
N78-3450-3550	30	30	DFT-QPSK	L	Outer_Full	26.799	28.500	PASS
N78-3450-3550	30	30	DFT-PI2BPSK	L	Outer_Full	26.821	28.620	PASS
N78-3450-3550	30	30	DFT-16QAM	L	Outer_Full	26.821	28.620	PASS
N78-3450-3550	30	30	DFT-64QAM	L	Outer_Full	26.792	28.560	PASS
N78-3450-3550	30	30	DFT-256QAM	L	Outer_Full	26.758	28.620	PASS
N78-3450-3550	30	30	CP-QPSK	L	Outer_Full	27.808	29.520	PASS
N78-3450-3550	30	30	CP-16QAM	L	Outer_Full	27.835	29.460	PASS
N78-3450-3550	30	30	CP-64QAM	L	Outer_Full	27.821	29.520	PASS
N78-3450-3550	30	30	CP-256QAM	L	Outer_Full	27.793	29.460	PASS
N78-3450-3550	30	30	DFT-QPSK	M	Outer_Full	26.794	28.620	PASS
N78-3450-3550	30	30	DFT-PI2BPSK	M	Outer_Full	26.807	28.740	PASS
N78-3450-3550	30	30	DFT-16QAM	M	Outer_Full	26.821	28.800	PASS
N78-3450-3550	30	30	DFT-64QAM	M	Outer_Full	26.795	28.620	PASS
N78-3450-3550	30	30	DFT-256QAM	M	Outer_Full	26.785	28.560	PASS
N78-3450-3550	30	30	CP-QPSK	M	Outer_Full	27.819	29.460	PASS
N78-3450-3550	30	30	CP-16QAM	M	Outer_Full	27.829	29.580	PASS
N78-3450-3550	30	30	CP-64QAM	M	Outer_Full	27.859	29.520	PASS
N78-3450-3550	30	30	CP-256QAM	M	Outer_Full	27.834	29.580	PASS
N78-3450-3550	30	30	DFT-QPSK	H	Outer_Full	26.777	28.680	PASS
N78-3450-3550	30	30	DFT-PI2BPSK	H	Outer_Full	26.77	28.560	PASS
N78-3450-3550	30	30	DFT-16QAM	H	Outer_Full	26.814	28.680	PASS
N78-3450-3550	30	30	DFT-64QAM	H	Outer_Full	26.811	28.560	PASS
N78-3450-3550	30	30	DFT-256QAM	H	Outer_Full	26.762	28.620	PASS
N78-3450-3550	30	30	CP-QPSK	H	Outer_Full	27.82	29.580	PASS
N78-3450-3550	30	30	CP-16QAM	H	Outer_Full	27.788	29.640	PASS
N78-3450-3550	30	30	CP-64QAM	H	Outer_Full	27.821	29.580	PASS
N78-3450-3550	30	30	CP-256QAM	H	Outer_Full	27.782	29.580	PASS
N78-3450-3550	30	40	DFT-QPSK	L	Outer_Full	35.711	37.840	PASS
N78-3450-3550	30	40	DFT-PI2BPSK	L	Outer_Full	35.759	38.000	PASS
N78-3450-3550	30	40	DFT-16QAM	L	Outer_Full	35.753	38.240	PASS
N78-3450-3550	30	40	DFT-64QAM	L	Outer_Full	35.706	38.000	PASS
N78-3450-3550	30	40	DFT-256QAM	L	Outer_Full	35.689	38.480	PASS
N78-3450-3550	30	40	CP-QPSK	L	Outer_Full	37.808	40.000	PASS



Unless otherwise agreed in writing, this document is issued by the Company subject to its General Conditions of Service printed overleaf, available on request or accessible at <http://www.sgs.com/en/Terms-and-Conditions.aspx> and, for electronic format documents, subject to Terms and Conditions for Electronic Documents at <http://www.sgs.com/en/Terms-and-Conditions/Terms-e-Documents.aspx>. Attention is drawn to the limitation of liability, indemnification and jurisdiction issues defined therein. Any holder of this document is advised that information contained herein reflects the Company's findings at the time of its intervention only and within the limits of Client's instructions, if any. The Company's sole responsibility is to its Client and this document does not exonerate parties to a transaction from exercising all their rights and obligations under the transaction documents. This document cannot be reproduced except in full, without prior written approval of the Company. Any unauthorized alteration, forgery or falsification of the content or appearance of this document is unlawful and offenders may be prosecuted to the fullest extent of the law. Unless otherwise stated the results shown in this test report refer only to the sample(s) tested and such sample(s) are retained for 30 days only.

Attention: To check the authenticity of testing/inspection report & certificate, please contact us at telephone: (86-755) 8307 1443, or email: CN.Doccheck@sgs.com

South of No. 6 Plant, No. 1, Runsheng Road, Suzhou Industrial Park, Suzhou Area, China (Jiangsu) Pilot Free Trade Zone 215000
 中国·苏州·中国(江苏)自由贸易试验区苏州片区苏州工业园区润胜路1号的6号厂房南楼 邮编: 215000

t (86-512) 62992980 www.sgs.com.cn
 t (86-512) 62992980 sgs.china@sgs.com



Report No.: SEWM2306000194RG02

Rev.: 01

Page: 28 of 160

N78-3450-3550	30	40	CP-16QAM	L	Outer_Full	37.79	40.160	PASS
N78-3450-3550	30	40	CP-64QAM	L	Outer_Full	37.885	40.080	PASS
N78-3450-3550	30	40	CP-256QAM	L	Outer_Full	37.779	39.840	PASS
N78-3450-3550	30	40	DFT-QPSK	M	Outer_Full	35.69	38.000	PASS
N78-3450-3550	30	40	DFT-PI2BPSK	M	Outer_Full	35.699	38.160	PASS
N78-3450-3550	30	40	DFT-16QAM	M	Outer_Full	38.406	50.960	PASS
N78-3450-3550	30	40	DFT-64QAM	M	Outer_Full	35.801	38.240	PASS
N78-3450-3550	30	40	DFT-256QAM	M	Outer_Full	35.734	38.240	PASS
N78-3450-3550	30	40	CP-QPSK	M	Outer_Full	37.822	40.000	PASS
N78-3450-3550	30	40	CP-16QAM	M	Outer_Full	37.813	39.920	PASS
N78-3450-3550	30	40	CP-64QAM	M	Outer_Full	37.843	40.080	PASS
N78-3450-3550	30	40	CP-256QAM	M	Outer_Full	37.756	39.920	PASS
N78-3450-3550	30	40	DFT-QPSK	H	Outer_Full	35.719	38.160	PASS
N78-3450-3550	30	40	DFT-PI2BPSK	H	Outer_Full	35.689	38.000	PASS
N78-3450-3550	30	40	DFT-16QAM	H	Outer_Full	35.711	38.240	PASS
N78-3450-3550	30	40	DFT-64QAM	H	Outer_Full	35.698	37.920	PASS
N78-3450-3550	30	40	DFT-256QAM	H	Outer_Full	35.68	38.160	PASS
N78-3450-3550	30	40	CP-QPSK	H	Outer_Full	37.791	40.000	PASS
N78-3450-3550	30	40	CP-16QAM	H	Outer_Full	37.793	39.920	PASS
N78-3450-3550	30	40	CP-64QAM	H	Outer_Full	37.838	40.160	PASS
N78-3450-3550	30	40	CP-256QAM	H	Outer_Full	37.744	39.920	PASS
N78-3450-3550	30	50	DFT-QPSK	L	Outer_Full	45.704	48.500	PASS
N78-3450-3550	30	50	DFT-PI2BPSK	L	Outer_Full	45.63	48.600	PASS
N78-3450-3550	30	50	DFT-16QAM	L	Outer_Full	45.716	48.600	PASS
N78-3450-3550	30	50	DFT-64QAM	L	Outer_Full	45.722	48.500	PASS
N78-3450-3550	30	50	DFT-256QAM	L	Outer_Full	45.546	48.400	PASS
N78-3450-3550	30	50	CP-QPSK	L	Outer_Full	47.428	50.00	PASS
N78-3450-3550	30	50	CP-16QAM	L	Outer_Full	47.369	49.900	PASS
N78-3450-3550	30	50	CP-64QAM	L	Outer_Full	47.382	50.000	PASS
N78-3450-3550	30	50	CP-256QAM	L	Outer_Full	47.407	49.900	PASS
N78-3450-3550	30	50	DFT-QPSK	M	Outer_Full	45.68	48.300	PASS
N78-3450-3550	30	50	DFT-PI2BPSK	M	Outer_Full	45.654	48.600	PASS
N78-3450-3550	30	50	DFT-16QAM	M	Outer_Full	45.673	48.400	PASS
N78-3450-3550	30	50	DFT-64QAM	M	Outer_Full	45.701	48.600	PASS
N78-3450-3550	30	50	DFT-256QAM	M	Outer_Full	45.55	49.900	PASS
N78-3450-3550	30	50	CP-QPSK	M	Outer_Full	47.397	50.000	PASS
N78-3450-3550	30	50	CP-16QAM	M	Outer_Full	47.4	50.400	PASS



Unless otherwise agreed in writing, this document is issued by the Company subject to its General Conditions of Service printed overleaf, available on request or accessible at <http://www.sgs.com/en/Terms-and-Conditions.aspx> and, for electronic format documents, subject to Terms and Conditions for Electronic Documents at <http://www.sgs.com/en/Terms-and-Conditions/Terms-e-Documents.aspx>. Attention is drawn to the limitation of liability, indemnification and jurisdiction issues defined therein. Any holder of this document is advised that information contained herein reflects the Company's findings at the time of its intervention only and within the limits of Client's instructions, if any. The Company's sole responsibility is to its Client and this document does not exonerate parties to a transaction from exercising all their rights and obligations under the transaction documents. This document cannot be reproduced except in full, without prior written approval of the Company. Any unauthorized alteration, forgery or falsification of the content or appearance of this document is unlawful and offenders may be prosecuted to the fullest extent of the law. Unless otherwise stated the results shown in this test report refer only to the sample(s) tested and such sample(s) are retained for 30 days only.

Attention: To check the authenticity of testing/inspection report & certificate, please contact us at telephone: (86-755) 8307 1443, or email: CN.Doccheck@sgs.com

South of No. 6 Plant, No. 1, Runsheng Road, Suzhou Industrial Park, Suzhou Area, China (Jiangsu) Pilot Free Trade Zone 215000
 中国·苏州·中国(江苏)自由贸易试验区苏州片区苏州工业园区润胜路1号的6号厂房南面 邮编: 215000

t (86-512) 62992980 www.sgsgroup.com.cn
 t (86-512) 62992980 sgs.china@sgs.com

N78-3450-3550	30	50	CP-64QAM	M	Outer_Full	47.377	49.900	PASS
N78-3450-3550	30	50	CP-256QAM	M	Outer_Full	47.441	56.800	PASS
N78-3450-3550	30	50	DFT-QPSK	H	Outer_Full	45.664	48.200	PASS
N78-3450-3550	30	50	DFT-PI2BPSK	H	Outer_Full	45.56	47.900	PASS
N78-3450-3550	30	50	DFT-16QAM	H	Outer_Full	45.639	48.300	PASS
N78-3450-3550	30	50	DFT-64QAM	H	Outer_Full	45.69	48.600	PASS
N78-3450-3550	30	50	DFT-256QAM	H	Outer_Full	45.497	48.800	PASS
N78-3450-3550	30	50	CP-QPSK	H	Outer_Full	47.382	50.000	PASS
N78-3450-3550	30	50	CP-16QAM	H	Outer_Full	47.368	50.000	PASS
N78-3450-3550	30	50	CP-64QAM	H	Outer_Full	47.342	49.900	PASS
N78-3450-3550	30	50	CP-256QAM	H	Outer_Full	47.352	51.300	PASS
N78-3450-3550	30	60	DFT-QPSK	L	Outer_Full	57.762	60.480	PASS
N78-3450-3550	30	60	DFT-PI2BPSK	L	Outer_Full	57.865	60.360	PASS
N78-3450-3550	30	60	DFT-16QAM	L	Outer_Full	57.700	59.76	PASS
N78-3450-3550	30	60	DFT-64QAM	L	Outer_Full	57.745	60.360	PASS
N78-3450-3550	30	60	DFT-256QAM	L	Outer_Full	57.746	60.480	PASS
N78-3450-3550	30	60	CP-QPSK	L	Outer_Full	57.863	60.360	PASS
N78-3450-3550	30	60	CP-16QAM	L	Outer_Full	57.78	60.240	PASS
N78-3450-3550	30	60	CP-64QAM	L	Outer_Full	57.817	60.480	PASS
N78-3450-3550	30	60	CP-256QAM	L	Outer_Full	57.716	62.280	PASS
N78-3450-3550	30	60	DFT-QPSK	M	Outer_Full	57.727	60.000	PASS
N78-3450-3550	30	60	DFT-PI2BPSK	M	Outer_Full	57.75	60.120	PASS
N78-3450-3550	30	60	DFT-16QAM	M	Outer_Full	57.821	60.120	PASS
N78-3450-3550	30	60	DFT-64QAM	M	Outer_Full	57.713	60.720	PASS
N78-3450-3550	30	60	DFT-256QAM	M	Outer_Full	57.71	60.480	PASS
N78-3450-3550	30	60	CP-QPSK	M	Outer_Full	57.765	60.120	PASS
N78-3450-3550	30	60	CP-16QAM	M	Outer_Full	57.727	60.120	PASS
N78-3450-3550	30	60	CP-64QAM	M	Outer_Full	57.698	60.120	PASS
N78-3450-3550	30	60	CP-256QAM	M	Outer_Full	57.69	67.320	PASS
N78-3450-3550	30	60	DFT-QPSK	H	Outer_Full	57.717	60.120	PASS
N78-3450-3550	30	60	DFT-PI2BPSK	H	Outer_Full	57.921	59.640	PASS
N78-3450-3550	30	60	DFT-16QAM	H	Outer_Full	57.824	60.240	PASS
N78-3450-3550	30	60	DFT-64QAM	H	Outer_Full	57.653	60.360	PASS
N78-3450-3550	30	60	DFT-256QAM	H	Outer_Full	57.68	60.360	PASS
N78-3450-3550	30	60	CP-QPSK	H	Outer_Full	57.751	60.120	PASS
N78-3450-3550	30	60	CP-16QAM	H	Outer_Full	57.708	60.240	PASS
N78-3450-3550	30	60	CP-64QAM	H	Outer_Full	57.696	60.480	PASS



Unless otherwise agreed in writing, this document is issued by the Company subject to its General Conditions of Service printed overleaf, available on request or accessible at <http://www.sgs.com/en/Terms-and-Conditions.aspx> and, for electronic format documents, subject to Terms and Conditions for Electronic Documents at <http://www.sgs.com/en/Terms-and-Conditions/Terms-e-Documents.aspx>. Attention is drawn to the limitation of liability, indemnification and jurisdiction issues defined therein. Any holder of this document is advised that information contained herein reflects the Company's findings at the time of its intervention only and within the limits of Client's instructions, if any. The Company's sole responsibility is to its Client and this document does not exonerate parties to a transaction from exercising all their rights and obligations under the transaction documents. This document cannot be reproduced except in full, without prior written approval of the Company. Any unauthorized alteration, forgery or falsification of the content or appearance of this document is unlawful and offenders may be prosecuted to the fullest extent of the law. Unless otherwise stated the results shown in this test report refer only to the sample(s) tested and such sample(s) are retained for 30 days only.

Attention: To check the authenticity of testing/inspection report & certificate, please contact us at telephone: (86-755) 8307 1443, or email: CN.Doccheck@sgs.com

South of No. 6 Plant, No. 1, Runsheng Road, Suzhou Industrial Park, Suzhou Area, China (Jiangsu) Pilot Free Trade Zone 215000
 中国·苏州·中国(江苏)自由贸易试验区苏州片区苏州工业园区润胜路1号的6号厂房南楼 邮编: 215000

t (86-512) 62992980 www.sgs.com.cn
 t (86-512) 62992980 sgs.china@sgs.com

N78-3450-3550	30	60	CP-256QAM	H	Outer_Full	57.696	60.240	PASS
N78-3450-3550	30	70	DFT-QPSK	L	Outer_Full	64.23	67.620	PASS
N78-3450-3550	30	70	DFT-PI2BPSK	L	Outer_Full	64.335	67.480	PASS
N78-3450-3550	30	70	DFT-16QAM	L	Outer_Full	64.185	66.08	PASS
N78-3450-3550	30	70	DFT-64QAM	L	Outer_Full	64.243	67.340	PASS
N78-3450-3550	30	70	DFT-256QAM	L	Outer_Full	64.3	67.760	PASS
N78-3450-3550	30	70	CP-QPSK	L	Outer_Full	67.535	70.700	PASS
N78-3450-3550	30	70	CP-16QAM	L	Outer_Full	67.51	70.420	PASS
N78-3450-3550	30	70	CP-64QAM	L	Outer_Full	67.531	70.560	PASS
N78-3450-3550	30	70	CP-256QAM	L	Outer_Full	67.434	70.280	PASS
N78-3450-3550	30	70	DFT-QPSK	M	Outer_Full	64.141	67.200	PASS
N78-3450-3550	30	70	DFT-PI2BPSK	M	Outer_Full	64.208	67.200	PASS
N78-3450-3550	30	70	DFT-16QAM	M	Outer_Full	64.15	67.340	PASS
N78-3450-3550	30	70	DFT-64QAM	M	Outer_Full	64.182	67.480	PASS
N78-3450-3550	30	70	DFT-256QAM	M	Outer_Full	64.256	67.480	PASS
N78-3450-3550	30	70	CP-QPSK	M	Outer_Full	67.449	70.560	PASS
N78-3450-3550	30	70	CP-16QAM	M	Outer_Full	67.392	70.420	PASS
N78-3450-3550	30	70	CP-64QAM	M	Outer_Full	67.44	70.420	PASS
N78-3450-3550	30	70	CP-256QAM	M	Outer_Full	67.331	70.560	PASS
N78-3450-3550	30	70	DFT-QPSK	H	Outer_Full	64.135	67.760	PASS
N78-3450-3550	30	70	DFT-PI2BPSK	H	Outer_Full	64.275	67.200	PASS
N78-3450-3550	30	70	DFT-16QAM	H	Outer_Full	64.114	67.620	PASS
N78-3450-3550	30	70	DFT-64QAM	H	Outer_Full	64.18	67.340	PASS
N78-3450-3550	30	70	DFT-256QAM	H	Outer_Full	64.24	67.760	PASS
N78-3450-3550	30	70	CP-QPSK	H	Outer_Full	67.382	70.420	PASS
N78-3450-3550	30	70	CP-16QAM	H	Outer_Full	67.377	70.420	PASS
N78-3450-3550	30	70	CP-64QAM	H	Outer_Full	67.365	70.420	PASS
N78-3450-3550	30	70	CP-256QAM	H	Outer_Full	67.291	70.000	PASS
N78-3450-3550	30	80	DFT-QPSK	L	Outer_Full	77.189	80.640	PASS
N78-3450-3550	30	80	DFT-PI2BPSK	L	Outer_Full	77.097	80.320	PASS
N78-3450-3550	30	80	DFT-16QAM	L	Outer_Full	77.162	80.960	PASS
N78-3450-3550	30	80	DFT-64QAM	L	Outer_Full	76.97	82.080	PASS
N78-3450-3550	30	80	DFT-256QAM	L	Outer_Full	77.111	80.800	PASS
N78-3450-3550	30	80	CP-QPSK	L	Outer_Full	77.411	80.800	PASS
N78-3450-3550	30	80	CP-16QAM	L	Outer_Full	77.427	80.960	PASS
N78-3450-3550	30	80	CP-64QAM	L	Outer_Full	77.414	81.120	PASS
N78-3450-3550	30	80	CP-256QAM	L	Outer_Full	77.33	81.280	PASS



Unless otherwise agreed in writing, this document is issued by the Company subject to its General Conditions of Service printed overleaf, available on request or accessible at <http://www.sgs.com/en/Terms-and-Conditions.aspx> and, for electronic format documents, subject to Terms and Conditions for Electronic Documents at <http://www.sgs.com/en/Terms-and-Conditions/Terms-e-Documents.aspx>. Attention is drawn to the limitation of liability, indemnification and jurisdiction issues defined therein. Any holder of this document is advised that information contained herein reflects the Company's findings at the time of its intervention only and within the limits of Client's instructions, if any. The Company's sole responsibility is to its Client and this document does not exonerate parties to a transaction from exercising all their rights and obligations under the transaction documents. This document cannot be reproduced except in full, without prior written approval of the Company. Any unauthorized alteration, forgery or falsification of the content or appearance of this document is unlawful and offenders may be prosecuted to the fullest extent of the law. Unless otherwise stated the results shown in this test report refer only to the sample(s) tested and such sample(s) are retained for 30 days only.

Attention: To check the authenticity of testing/inspection report & certificate, please contact us at telephone: (86-755) 8307 1443, or email: CN.Doccheck@sgs.com

South of No. 6 Plant, No. 1, Runsheng Road, Suzhou Industrial Park, Suzhou Area, China (Jiangsu) Pilot Free Trade Zone 215000
 中国·苏州·中国(江苏)自由贸易试验区苏州片区苏州工业园区润胜路1号的6号厂房南楼 邮编: 215000

t (86-512) 62992980 www.sgs.com.cn
 t (86-512) 62992980 sgs.china@sgs.com



Report No.: SEWM2306000194RG02

Rev.: 01

Page: 31 of 160

N78-3450-3550	30	80	DFT-QPSK	M	Outer_Full	77.077	80.640	PASS
N78-3450-3550	30	80	DFT-PI2BPSK	M	Outer_Full	77.012	80.480	PASS
N78-3450-3550	30	80	DFT-16QAM	M	Outer_Full	76.99	80.800	PASS
N78-3450-3550	30	80	DFT-64QAM	M	Outer_Full	76.9	81.600	PASS
N78-3450-3550	30	80	DFT-256QAM	M	Outer_Full	77.12	80.640	PASS
N78-3450-3550	30	80	CP-QPSK	M	Outer_Full	77.334	81.280	PASS
N78-3450-3550	30	80	CP-16QAM	M	Outer_Full	77.354	81.120	PASS
N78-3450-3550	30	80	CP-64QAM	M	Outer_Full	77.332	81.280	PASS
N78-3450-3550	30	80	CP-256QAM	M	Outer_Full	77.289	80.960	PASS
N78-3450-3550	30	80	DFT-QPSK	H	Outer_Full	77.081	80.800	PASS
N78-3450-3550	30	80	DFT-PI2BPSK	H	Outer_Full	76.958	80.320	PASS
N78-3450-3550	30	80	DFT-16QAM	H	Outer_Full	76.96	80.960	PASS
N78-3450-3550	30	80	DFT-64QAM	H	Outer_Full	76.856	81.440	PASS
N78-3450-3550	30	80	DFT-256QAM	H	Outer_Full	77.085	80.640	PASS
N78-3450-3550	30	80	CP-QPSK	H	Outer_Full	77.302	81.280	PASS
N78-3450-3550	30	80	CP-16QAM	H	Outer_Full	77.309	80.960	PASS
N78-3450-3550	30	80	CP-64QAM	H	Outer_Full	77.216	80.960	PASS
N78-3450-3550	30	80	CP-256QAM	H	Outer_Full	77.295	81.440	PASS
N78-3450-3550	30	90	DFT-QPSK	L	Outer_Full	85.588	89.460	PASS
N78-3450-3550	30	90	DFT-PI2BPSK	L	Outer_Full	85.611	89.640	PASS
N78-3450-3550	30	90	DFT-16QAM	L	Outer_Full	85.441	89.640	PASS
N78-3450-3550	30	90	DFT-64QAM	L	Outer_Full	85.473	89.280	PASS
N78-3450-3550	30	90	DFT-256QAM	L	Outer_Full	85.601	89.640	PASS
N78-3450-3550	30	90	CP-QPSK	L	Outer_Full	87.233	91.260	PASS
N78-3450-3550	30	90	CP-16QAM	L	Outer_Full	87.387	91.440	PASS
N78-3450-3550	30	90	CP-64QAM	L	Outer_Full	87.393	90.900	PASS
N78-3450-3550	30	90	CP-256QAM	L	Outer_Full	87.142	91.080	PASS
N78-3450-3550	30	90	DFT-QPSK	M	Outer_Full	85.536	89.640	PASS
N78-3450-3550	30	90	DFT-PI2BPSK	M	Outer_Full	85.343	89.10	PASS
N78-3450-3550	30	90	DFT-16QAM	M	Outer_Full	85.562	89.640	PASS
N78-3450-3550	30	90	DFT-64QAM	M	Outer_Full	85.512	89.640	PASS
N78-3450-3550	30	90	DFT-256QAM	M	Outer_Full	85.603	89.640	PASS
N78-3450-3550	30	90	CP-QPSK	M	Outer_Full	87.215	91.440	PASS
N78-3450-3550	30	90	CP-16QAM	M	Outer_Full	87.403	91.260	PASS
N78-3450-3550	30	90	CP-64QAM	M	Outer_Full	87.356	91.080	PASS
N78-3450-3550	30	90	CP-256QAM	M	Outer_Full	87.16	91.080	PASS
N78-3450-3550	30	90	DFT-QPSK	H	Outer_Full	85.528	89.640	PASS



Unless otherwise agreed in writing, this document is issued by the Company subject to its General Conditions of Service printed overleaf, available on request or accessible at <http://www.sgs.com/en/Terms-and-Conditions.aspx> and, for electronic format documents, subject to Terms and Conditions for Electronic Documents at <http://www.sgs.com/en/Terms-and-Conditions/Terms-e-Documents.aspx>. Attention is drawn to the limitation of liability, indemnification and jurisdiction issues defined therein. Any holder of this document is advised that information contained herein reflects the Company's findings at the time of its intervention only and within the limits of Client's instructions, if any. The Company's sole responsibility is to its Client and this document does not exonerate parties to a transaction from exercising all their rights and obligations under the transaction documents. This document cannot be reproduced except in full, without prior written approval of the Company. Any unauthorized alteration, forgery or falsification of the content or appearance of this document is unlawful and offenders may be prosecuted to the fullest extent of the law. Unless otherwise stated the results shown in this test report refer only to the sample(s) tested and such sample(s) are retained for 30 days only.

Attention: To check the authenticity of testing/inspection report & certificate, please contact us at telephone: (86-755) 8307 1443, or email: CN.Doccheck@sgs.com

South of No. 6 Plant, No. 1, Runsheng Road, Suzhou Industrial Park, Suzhou Area, China (Jiangsu) Pilot Free Trade Zone 215000
 中国·苏州·中国(江苏)自由贸易试验区苏州片区苏州工业园区润胜路1号的6号厂房南面 邮编: 215000

t (86-512) 62992980 www.sgs.com.cn
 t (86-512) 62992980 sgs.china@sgs.com