

Appendix B

Detailed Test Results

GSM850 for Head, Body
GSM1900 for Head, Body & Limbs
WCDMA Band II for Head, Body & Limbs
WCDMA Band IV for Head, Body
WCDMA Band V for Head, Body
LTE Band 2 for Head, Body & Limbs
LTE Band 4 for Head, Body
LTE Band 5 for Head, Body
LTE Band 7 for Head, Body & Limbs
LTE Band 12 for Head, Body
LTE Band 13 for Head, Body
LTE Band 26 for Head, Body
LTE Band 38 for Head, Body
LTE Band 41 for Head, Body
LTE Band 66 for Head, Body & Limbs
WIFI 2.4G for Head, Body
WIFI 5G for Head, Body & Limbs
BT for Head, Body

Test Laboratory: SGS-SAR Lab

V2247 GSM850 GPRS 2TS 190CH Right cheek Ant13

DUT: V2247; Type: Mobile Phone; Serial: 863548060193558

Communication System: UID 0, GPRS/EGPRS Mode(2up) Communication System (0); Frequency: 836.6 MHz; Duty Cycle: 1:4.14954

Medium: HSL835; Medium parameters used: $f = 837$ MHz; $\sigma = 0.913$ S/m; $\epsilon_r = 42.622$; $\rho = 1000$ kg/m³

Phantom section: Right Section

DASY 5 Configuration:

- Probe: ES3DV3 - SN3137; ConvF(6.09, 6.09, 6.09); Calibrated: 2022/9/16
- Sensor-Surface: 3mm (Mechanical Surface Detection)
- Electronics: DAE4 Sn896; Calibrated: 2023/3/17
- Phantom: SAM 6; Type: SAM Twin; Serial: 1481
- DASY52 52.10.4(1527); SEMCAD X 14.6.14(7483)

Configuration/Head/Area Scan (8x14x1): Measurement grid: dx=15mm, dy=15mm

Maximum value of SAR (measured) = 0.533 W/kg

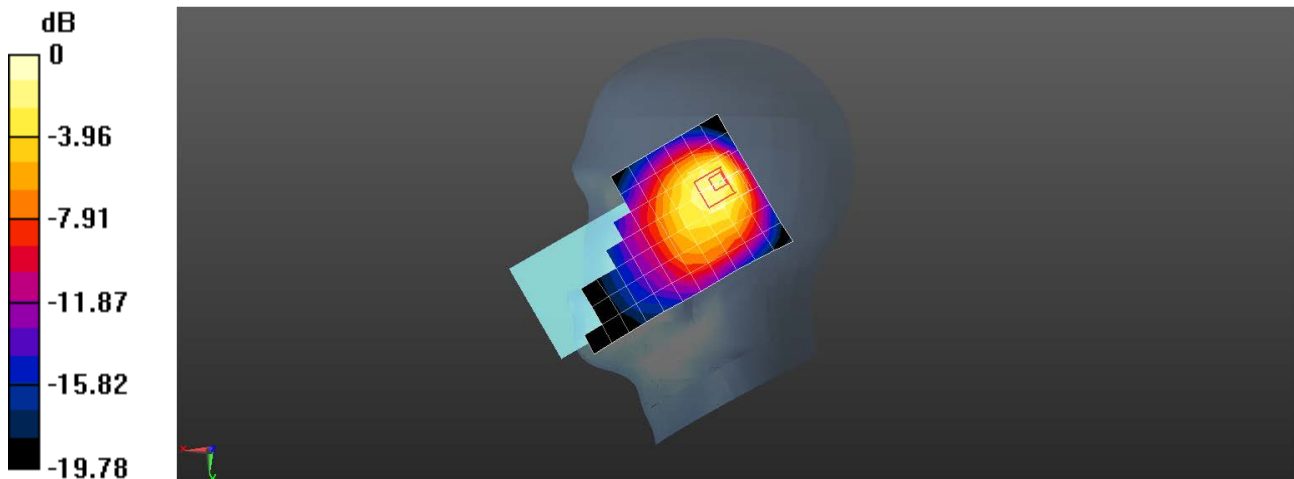
Configuration/Head/Zoom Scan (5x5x7)/Cube 0: Measurement grid: dx=8mm, dy=8mm, dz=5mm

Reference Value = 21.15 V/m; Power Drift = -0.17 dB

Peak SAR (extrapolated) = 1.20 W/kg

SAR(1 g) = 0.529 W/kg; SAR(10 g) = 0.299 W/kg

Maximum value of SAR (measured) = 0.690 W/kg



0 dB = 0.690 W/kg = -1.61 dBW/kg

Test Laboratory: SGS-SAR Lab

V2247 GSM850 GSM 190CH Back side 15mm Ant13**DUT: V2247; Type: Mobile Phone; Serial: 863548060193558**

Communication System: UID 0, GSM Only Communication System (0); Frequency: 836.6 MHz; Duty Cycle: 1:8.30042

Medium: HSL835; Medium parameters used: $f = 837$ MHz; $\sigma = 0.913$ S/m; $\epsilon_r = 42.622$; $\rho = 1000$ kg/m³

Phantom section: Flat Section

DASY 5 Configuration:

- Probe: ES3DV3 - SN3137; ConvF(6.09, 6.09, 6.09); Calibrated: 2022/9/16
- Sensor-Surface: 3mm (Mechanical Surface Detection)
- Electronics: DAE4 Sn896; Calibrated: 2023/3/17
- Phantom: SAM 6; Type: SAM Twin; Serial: 1481
- DASY52 52.10.4(1527); SEMCAD X 14.6.14(7483)

Configuration/Body/Area Scan (8x13x1): Measurement grid: dx=15mm, dy=15mm

Maximum value of SAR (measured) = 0.205 W/kg

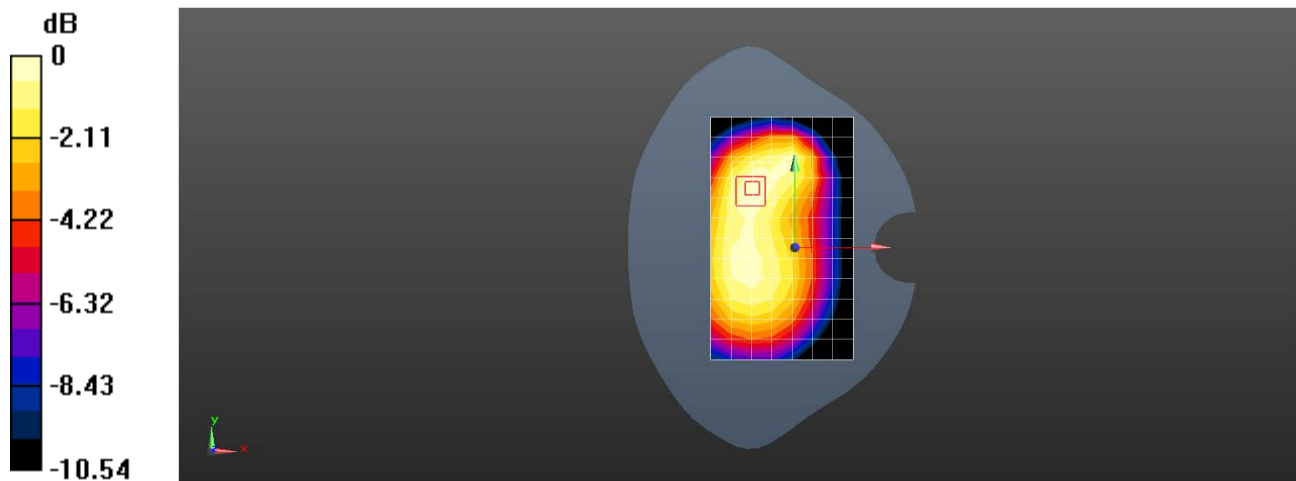
Configuration/Body/Zoom Scan (5x5x7)/Cube 0: Measurement grid: dx=8mm, dy=8mm, dz=5mm

Reference Value = 13.07 V/m; Power Drift = 0.12 dB

Peak SAR (extrapolated) = 0.259 W/kg

SAR(1 g) = 0.187 W/kg; SAR(10 g) = 0.133 W/kg

Maximum value of SAR (measured) = 0.212 W/kg



0 dB = 0.212 W/kg = -6.74 dBW/kg

Test Laboratory: SGS-SAR Lab

V2247 GSM850 GPRS 2TS 190CH Back side 10mm Ant13**DUT: V2247; Type: Mobile Phone; Serial: 863548060193558**

Communication System: UID 0, GPRS/EGPRS Mode(2up) Communication System (0); Frequency: 836.6 MHz; Duty Cycle: 1:4.14954

Medium: HSL835; Medium parameters used: $f = 837$ MHz; $\sigma = 0.913$ S/m; $\epsilon_r = 42.622$; $\rho = 1000$ kg/m³

Phantom section: Flat Section

DASY 5 Configuration:

- Probe: ES3DV3 - SN3137; ConvF(6.09, 6.09, 6.09); Calibrated: 2022/9/16
- Sensor-Surface: 3mm (Mechanical Surface Detection)
- Electronics: DAE4 Sn896; Calibrated: 2023/3/17
- Phantom: SAM 6; Type: SAM Twin; Serial: 1481
- DASY52 52.10.4(1527); SEMCAD X 14.6.14(7483)

Configuration/Body/Area Scan (8x13x1): Measurement grid: dx=15mm, dy=15mm

Maximum value of SAR (measured) = 0.361 W/kg

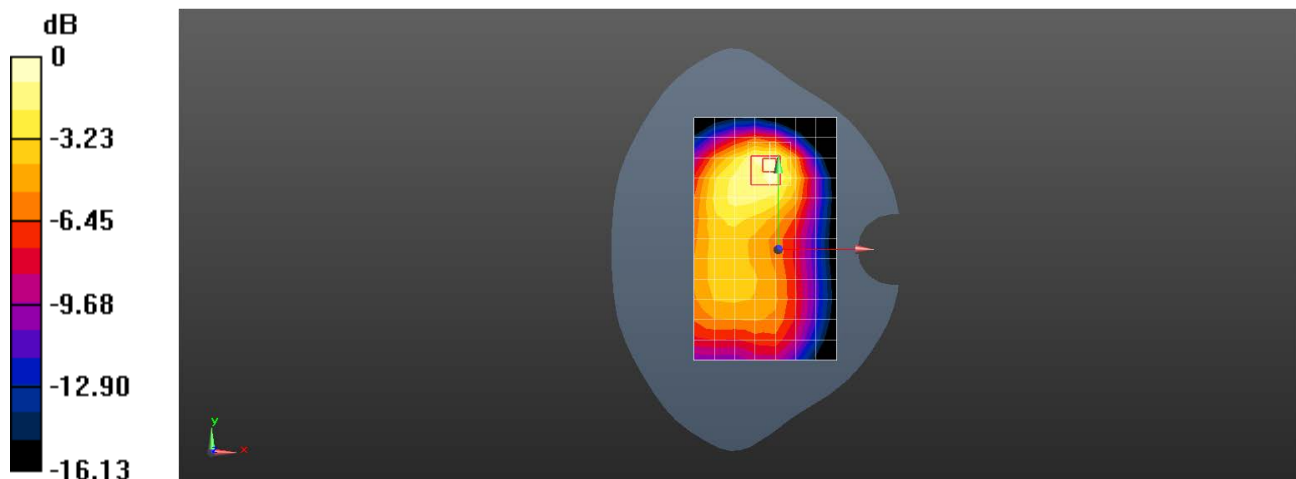
Configuration/Body/Zoom Scan (5x5x7)/Cube 0: Measurement grid: dx=8mm, dy=8mm, dz=5mm

Reference Value = 12.63 V/m; Power Drift = 0.01 dB

Peak SAR (extrapolated) = 0.618 W/kg

SAR(1 g) = 0.346 W/kg; SAR(10 g) = 0.207 W/kg

Maximum value of SAR (measured) = 0.427 W/kg



0 dB = 0.427 W/kg = -3.70 dBW/kg

Test Laboratory: SGS-SAR Lab

V2247 GSM1900 GPRS 2TS 661CH Left cheek Ant31

DUT: V2247; Type: Mobile Phone; Serial: 863548060193491

Communication System: UID 0, GPRS/EGPRS Mode(2up) Communication System (0); Frequency: 1880 MHz; Duty Cycle: 1:4.15

Medium: HSL1900; Medium parameters used: $f = 1880$ MHz; $\sigma = 1.361$ S/m; $\epsilon_r = 40.243$; $\rho = 1000$ kg/m³

Phantom section: Left Section

DASY 5 Configuration:

- Probe: EX3DV4 - SN3789; ConvF(7.3, 7.3, 7.3); Calibrated: 2022/9/30
- Sensor-Surface: 1.4mm (Mechanical Surface Detection)
- Electronics: DAE4 Sn702; Calibrated: 2022/11/9
- Phantom: SAM 4; Type: SAM; Serial: 1913
- DASY52 52.10.4(1527); SEMCAD X 14.6.14(7483)

Configuration/Head/Area Scan (8x13x1): Measurement grid: dx=15mm, dy=15mm

Maximum value of SAR (measured) = 0.0649 W/kg

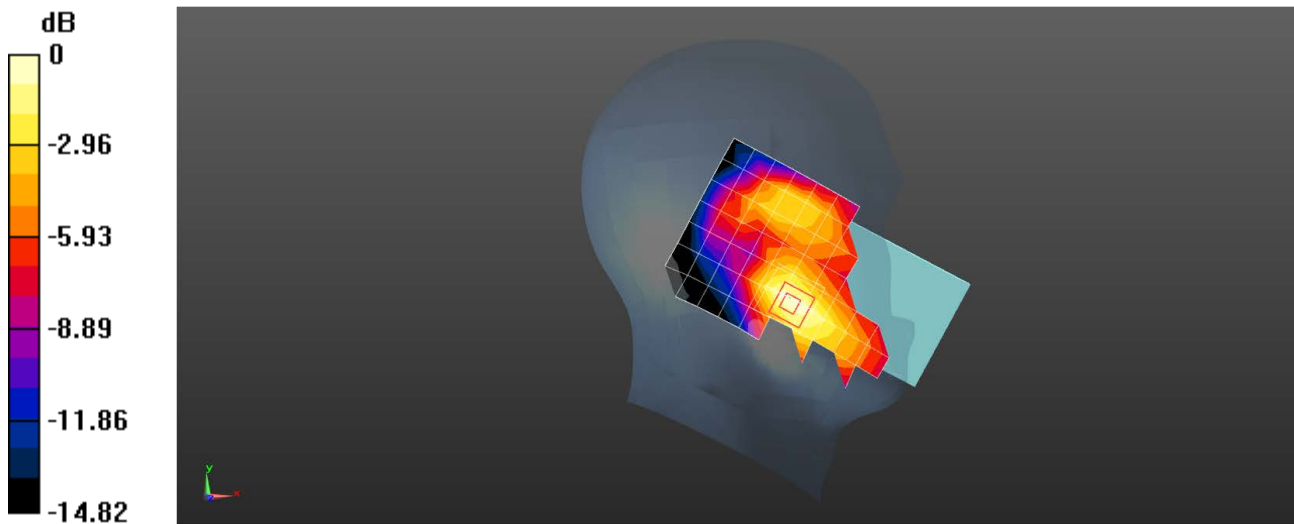
Configuration/Head/Zoom Scan (5x5x7)/Cube 0: Measurement grid: dx=8mm, dy=8mm, dz=5mm

Reference Value = 2.355 V/m; Power Drift = 0.07 dB

Peak SAR (extrapolated) = 0.0840 W/kg

SAR(1 g) = 0.053 W/kg; SAR(10 g) = 0.032 W/kg

Maximum value of SAR (measured) = 0.0688 W/kg



0 dB = 0.0688 W/kg = -11.62 dBW/kg

Test Laboratory: SGS-SAR Lab

V2247 GSM1900 GSM 661CH Back side 15mm Ant13

DUT: V2247; Type: Mobile Phone; Serial: 863548060193491

Communication System: UID 0, GSM Only Communication System (0); Frequency: 1880 MHz; Duty Cycle: 1:8.3

Medium: HSL1900; Medium parameters used: $f = 1880$ MHz; $\sigma = 1.361$ S/m; $\epsilon_r = 40.243$; $\rho = 1000$ kg/m³

Phantom section: Flat Section

DASY 5 Configuration:

- Probe: EX3DV4 - SN3789; ConvF(7.3, 7.3, 7.3); Calibrated: 2022/9/30
- Sensor-Surface: 1.4mm (Mechanical Surface Detection)
- Electronics: DAE4 Sn702; Calibrated: 2022/11/9
- Phantom: SAM 4; Type: SAM; Serial: 1913
- DASY52 52.10.4(1527); SEMCAD X 14.6.14(7483)

Configuration/Body/Area Scan (8x13x1): Measurement grid: dx=15mm, dy=15mm

Maximum value of SAR (measured) = 0.552 W/kg

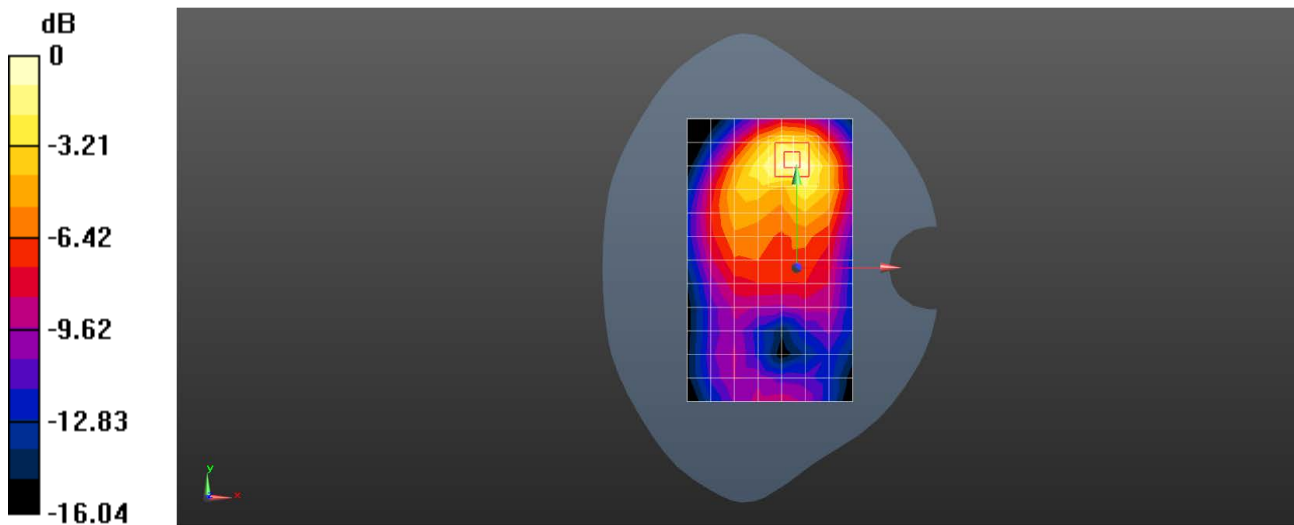
Configuration/Body/Zoom Scan (5x5x7)/Cube 0: Measurement grid: dx=8mm, dy=8mm, dz=5mm

Reference Value = 8.844 V/m; Power Drift = 0.03 dB

Peak SAR (extrapolated) = 0.742 W/kg

SAR(1 g) = 0.436 W/kg; SAR(10 g) = 0.248 W/kg

Maximum value of SAR (measured) = 0.634 W/kg



0 dB = 0.634 W/kg = -1.98 dBW/kg

Test Laboratory: SGS-SAR Lab

V2247 GSM1900 GPRS 2TS 661CH Top side 10mm Ant13**DUT: V2247; Type: Mobile Phone; Serial: 863548060193491**

Communication System: UID 0, GPRS/EGPRS Mode(2up) Communication System (0); Frequency: 1880 MHz; Duty Cycle: 1:4.15

Medium: HSL1900; Medium parameters used: $f = 1880$ MHz; $\sigma = 1.361$ S/m; $\epsilon_r = 40.243$; $\rho = 1000$ kg/m³

Phantom section: Flat Section

DASY 5 Configuration:

- Probe: EX3DV4 - SN3789; ConvF(7.3, 7.3, 7.3); Calibrated: 2022/9/30
- Sensor-Surface: 1.4mm (Mechanical Surface Detection)
- Electronics: DAE4 Sn702; Calibrated: 2022/11/9
- Phantom: SAM 4; Type: SAM; Serial: 1913
- DASY52 52.10.4(1527); SEMCAD X 14.6.14(7483)

Configuration/Body/Area Scan (5x8x1): Measurement grid: dx=15mm, dy=15mm

Maximum value of SAR (measured) = 0.866 W/kg

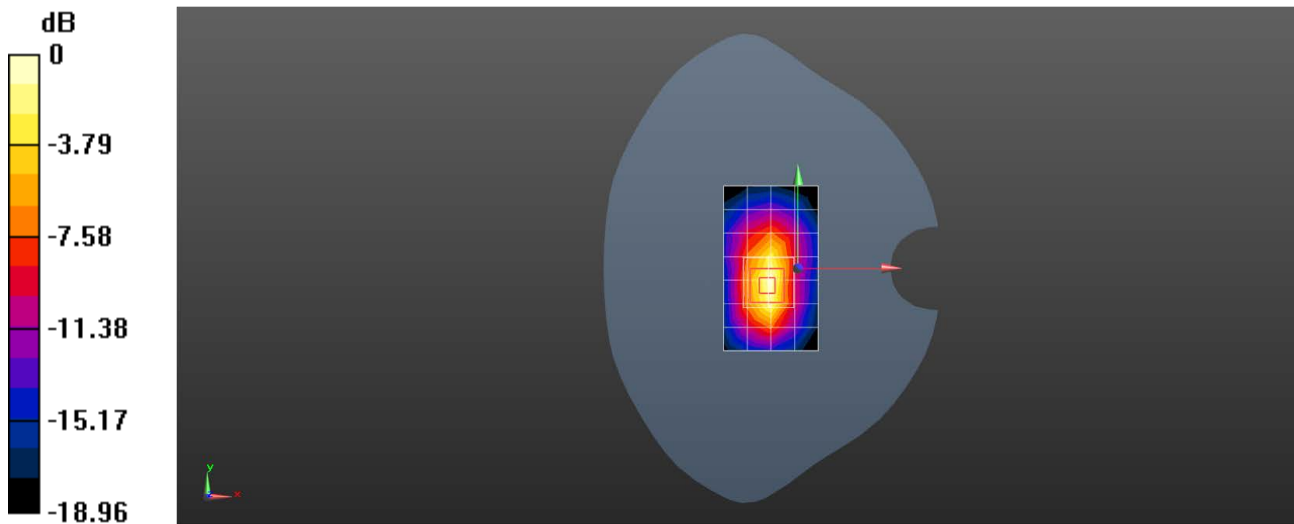
Configuration/Body/Zoom Scan (5x5x7)/Cube 0: Measurement grid: dx=8mm, dy=8mm, dz=5mm

Reference Value = 19.20 V/m; Power Drift = 0.16 dB

Peak SAR (extrapolated) = 1.10 W/kg

SAR(1 g) = 0.583 W/kg; SAR(10 g) = 0.288 W/kg

Maximum value of SAR (measured) = 0.919 W/kg



0 dB = 0.919 W/kg = -0.37 dBW/kg

Test Laboratory: SGS-SAR Lab

V2247 GSM1900 GPRS 2TS 661CH Back side 0mm Ant13**DUT: V2247; Type: Mobile Phone; Serial: 863548060193491**

Communication System: UID 0, GPRS/EGPRS Mode(2up) Communication System (0); Frequency: 1880 MHz; Duty Cycle: 1:4.15

Medium: HSL1900; Medium parameters used: $f = 1880$ MHz; $\sigma = 1.361$ S/m; $\epsilon_r = 40.243$; $\rho = 1000$ kg/m³

Phantom section: Flat Section

DASY 5 Configuration:

- Probe: EX3DV4 - SN3789; ConvF(7.3, 7.3, 7.3); Calibrated: 2022/9/30
- Sensor-Surface: 1.4mm (Mechanical Surface Detection)
- Electronics: DAE4 Sn702; Calibrated: 2022/11/9
- Phantom: SAM 4; Type: SAM; Serial: 1913
- DASY52 52.10.4(1527); SEMCAD X 14.6.14(7483)

Configuration/Body/Area Scan (8x13x1): Measurement grid: dx=15mm, dy=15mm

Maximum value of SAR (measured) = 2.71 W/kg

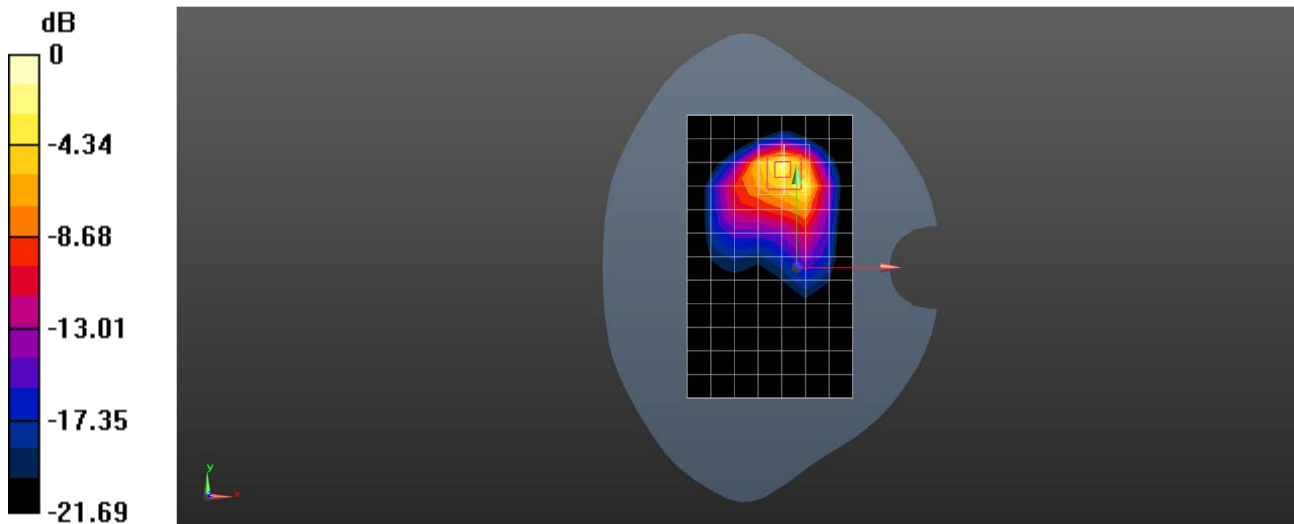
Configuration/Body/Zoom Scan (5x5x7)/Cube 0: Measurement grid: dx=8mm, dy=8mm, dz=5mm

Reference Value = 5.237 V/m; Power Drift = -0.05 dB

Peak SAR (extrapolated) = 5.34 W/kg

SAR(1 g) = 2.23 W/kg; SAR(10 g) = 1 W/kg

Maximum value of SAR (measured) = 4.29 W/kg



0 dB = 4.29 W/kg = 6.32 dBW/kg

Test Laboratory: SGS-SAR Lab

V2247 WCDMA Band II RMC 9400CH Right cheek Ant31

DUT: V2247; Type: Mobile Phone; Serial: 863548060193491

Communication System: UID 0, WCDMA (0); Frequency: 1880 MHz; Duty Cycle: 1:1

Medium: HSL1900; Medium parameters used: $f = 1880$ MHz; $\sigma = 1.398$ S/m; $\epsilon_r = 40.37$; $\rho = 1000$ kg/m³

Phantom section: Right Section

DASY 5 Configuration:

- Probe: EX3DV4 - SN3789; ConvF(7.3, 7.3, 7.3); Calibrated: 2022/9/30
- Sensor-Surface: 1.4mm (Mechanical Surface Detection)
- Electronics: DAE4 Sn702; Calibrated: 2022/11/9
- Phantom: SAM 4; Type: SAM; Serial: 1913
- DASY52 52.10.4(1527); SEMCAD X 14.6.14(7483)

Configuration/Head/Area Scan (8x13x1): Measurement grid: dx=15mm, dy=15mm

Maximum value of SAR (measured) = 0.0887 W/kg

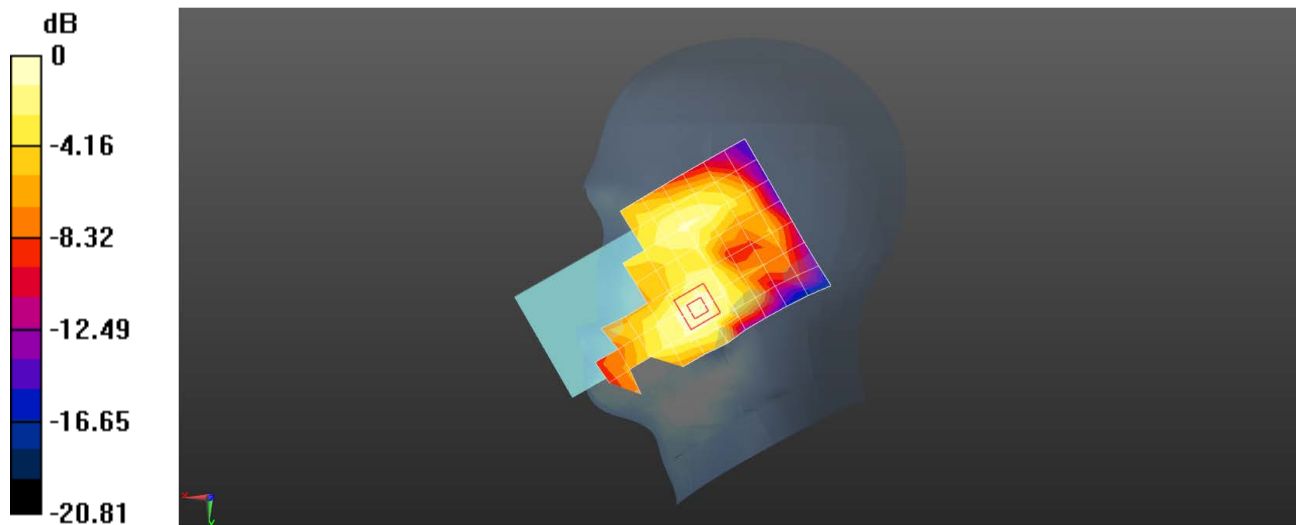
Configuration/Head/Zoom Scan (5x5x7)/Cube 0: Measurement grid: dx=8mm, dy=8mm, dz=5mm

Reference Value = 3.819 V/m; Power Drift = 0.04 dB

Peak SAR (extrapolated) = 0.112 W/kg

SAR(1 g) = 0.072 W/kg; SAR(10 g) = 0.046 W/kg

Maximum value of SAR (measured) = 0.0969 W/kg



0 dB = 0.0969 W/kg = -10.14 dBW/kg

Test Laboratory: SGS-SAR Lab

V2247 WCDMA Band II RMC 9400CH Back side 15mm Ant13

DUT: V2247; Type: Mobile Phone; Serial: 863548060193491

Communication System: UID 0, WCDMA (0); Frequency: 1880 MHz; Duty Cycle: 1:1

Medium: HSL1900; Medium parameters used: $f = 1880$ MHz; $\sigma = 1.398$ S/m; $\epsilon_r = 40.37$; $\rho = 1000$ kg/m³

Phantom section: Flat Section

DASY 5 Configuration:

- Probe: EX3DV4 - SN3789; ConvF(7.3, 7.3, 7.3); Calibrated: 2022/9/30
- Sensor-Surface: 1.4mm (Mechanical Surface Detection)
- Electronics: DAE4 Sn702; Calibrated: 2022/11/9
- Phantom: SAM 4; Type: SAM; Serial: 1913
- DASY52 52.10.4(1527); SEMCAD X 14.6.14(7483)

Configuration/Body/Area Scan (8x13x1): Measurement grid: dx=15mm, dy=15mm

Maximum value of SAR (measured) = 0.718 W/kg

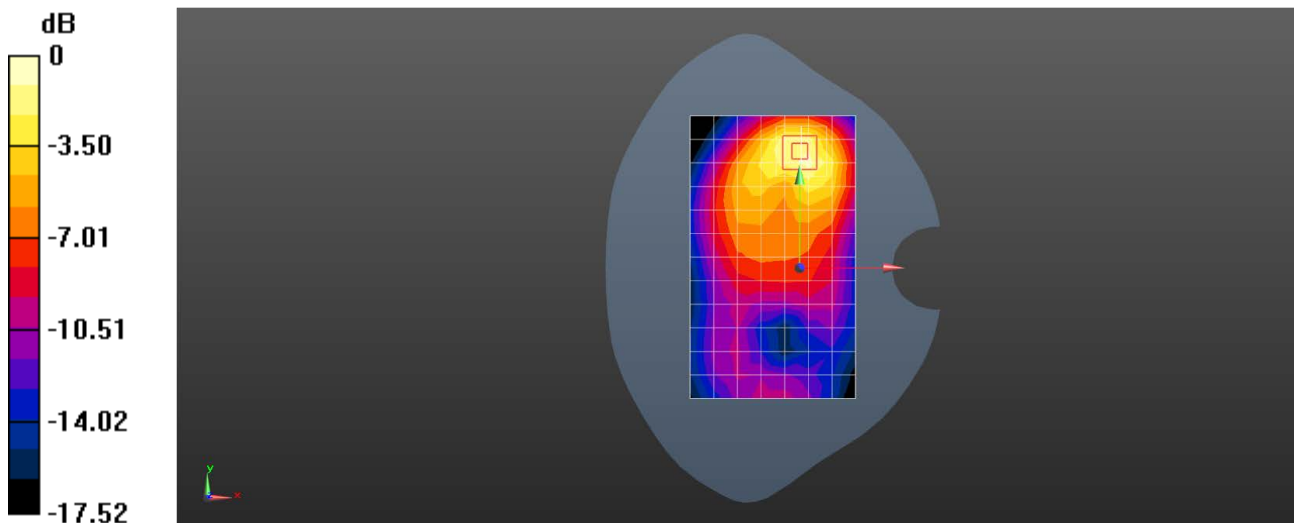
Configuration/Body/Zoom Scan (5x5x7)/Cube 0: Measurement grid: dx=8mm, dy=8mm, dz=5mm

Reference Value = 9.619 V/m; Power Drift = -0.19 dB

Peak SAR (extrapolated) = 0.953 W/kg

SAR(1 g) = 0.554 W/kg; SAR(10 g) = 0.311 W/kg

Maximum value of SAR (measured) = 0.814 W/kg



0 dB = 0.814 W/kg = -0.89 dBW/kg

Test Laboratory: SGS-SAR Lab

V2247 WCDMA Band II RMC 9400CH Top side 10mm Ant13

DUT: V2247; Type: Mobile Phone; Serial: 863548060193491

Communication System: UID 0, WCDMA (0); Frequency: 1880 MHz; Duty Cycle: 1:1

Medium: HSL1900; Medium parameters used: $f = 1880$ MHz; $\sigma = 1.398$ S/m; $\epsilon_r = 40.37$; $\rho = 1000$ kg/m³

Phantom section: Flat Section

DASY 5 Configuration:

- Probe: EX3DV4 - SN3789; ConvF(7.3, 7.3, 7.3); Calibrated: 2022/9/30
- Sensor-Surface: 1.4mm (Mechanical Surface Detection)
- Electronics: DAE4 Sn702; Calibrated: 2022/11/9
- Phantom: SAM 4; Type: SAM; Serial: 1913
- DASY52 52.10.4(1527); SEMCAD X 14.6.14(7483)

Configuration/Body/Area Scan (5x9x1): Measurement grid: dx=15mm, dy=15mm

Maximum value of SAR (measured) = 0.622 W/kg

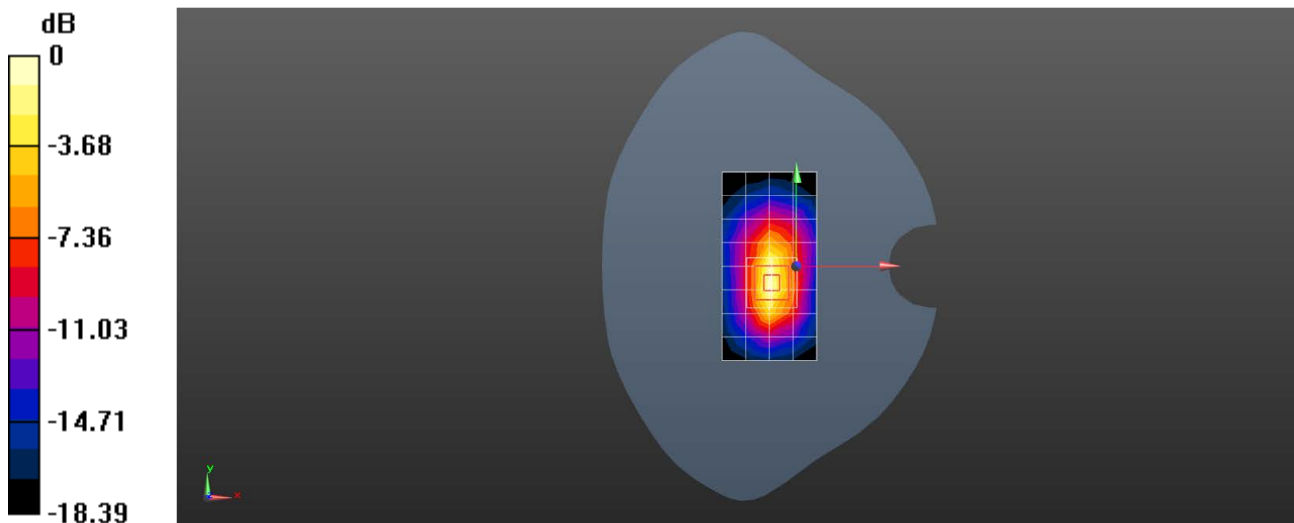
Configuration/Body/Zoom Scan (5x5x7)/Cube 0: Measurement grid: dx=8mm, dy=8mm, dz=5mm

Reference Value = 16.56 V/m; Power Drift = -0.02 dB

Peak SAR (extrapolated) = 0.803 W/kg

SAR(1 g) = 0.429 W/kg; SAR(10 g) = 0.212 W/kg

Maximum value of SAR (measured) = 0.676 W/kg



0 dB = 0.676 W/kg = -1.70 dBW/kg

Test Laboratory: SGS-SAR Lab

V2247 WCDMA Band II RMC 9400CH Top side 0mm Ant13

DUT: V2247; Type: Mobile Phone; Serial: 863548060193491

Communication System: UID 0, WCDMA (0); Frequency: 1880 MHz; Duty Cycle: 1:1

Medium: HSL1900; Medium parameters used: $f = 1880$ MHz; $\sigma = 1.398$ S/m; $\epsilon_r = 40.37$; $\rho = 1000$ kg/m³

Phantom section: Flat Section

DASY 5 Configuration:

- Probe: EX3DV4 - SN3789; ConvF(7.3, 7.3, 7.3); Calibrated: 2022/9/30
- Sensor-Surface: 1.4mm (Mechanical Surface Detection)
- Electronics: DAE4 Sn702; Calibrated: 2022/11/9
- Phantom: SAM 4; Type: SAM; Serial: 1913
- DASY52 52.10.4(1527); SEMCAD X 14.6.14(7483)

Configuration/Body/Area Scan (5x9x1): Measurement grid: dx=15mm, dy=15mm

Maximum value of SAR (measured) = 5.49 W/kg

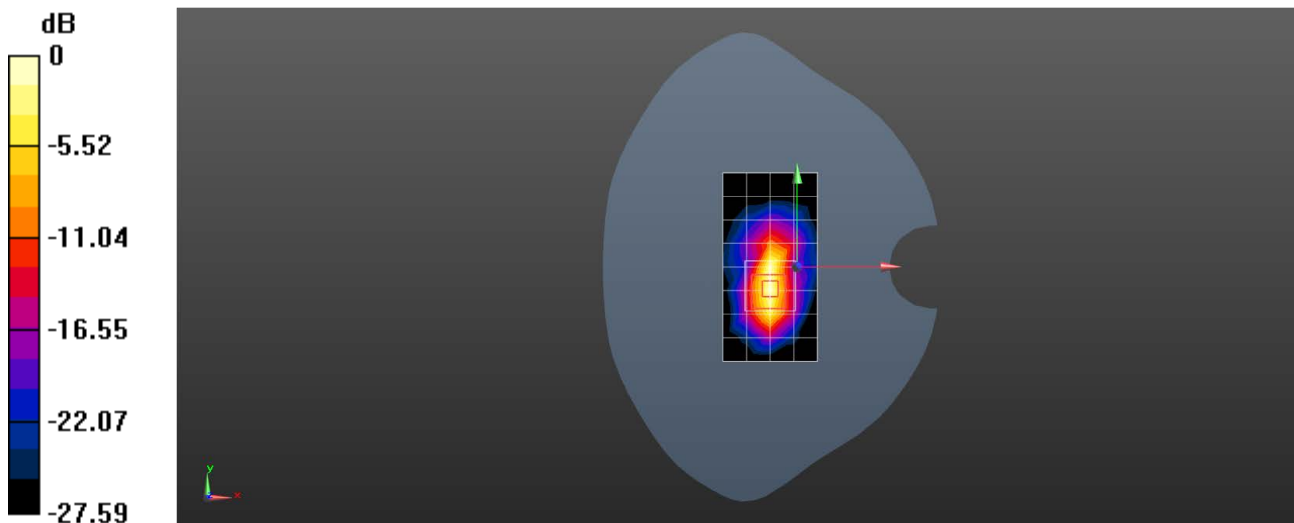
Configuration/Body/Zoom Scan (5x5x7)/Cube 0: Measurement grid: dx=8mm, dy=8mm, dz=5mm

Reference Value = 36.21 V/m; Power Drift = -0.01 dB

Peak SAR (extrapolated) = 7.59 W/kg

SAR(1 g) = 2.51 W/kg; SAR(10 g) = 0.968 W/kg

Maximum value of SAR (measured) = 6.16 W/kg



0 dB = 6.16 W/kg = 7.90 dBW/kg

Test Laboratory: SGS-SAR Lab

V2247 WCDMA Band IV RMC 1412CH Right cheek Ant31

DUT: V2247; Type: Mobile Phone; Serial: 863548060193491

Communication System: UID 0, WCDMA (0); Frequency: 1732.4 MHz; Duty Cycle: 1:1

Medium: HSL1750; Medium parameters used: $f = 1732.4$ MHz; $\sigma = 1.334$ S/m; $\epsilon_r = 40.371$; $\rho = 1000$ kg/m³

Phantom section: Right Section

DASY 5 Configuration:

- Probe: EX3DV4 - SN3789; ConvF(7.65, 7.65, 7.65); Calibrated: 2022/9/30
- Sensor-Surface: 1.4mm (Mechanical Surface Detection)
- Electronics: DAE4 Sn702; Calibrated: 2022/11/9
- Phantom: SAM 4; Type: SAM; Serial: 1913
- DASY52 52.10.4(1527); SEMCAD X 14.6.14(7483)

Configuration/Head/Area Scan (8x13x1): Measurement grid: dx=15mm, dy=15mm

Maximum value of SAR (measured) = 0.0779 W/kg

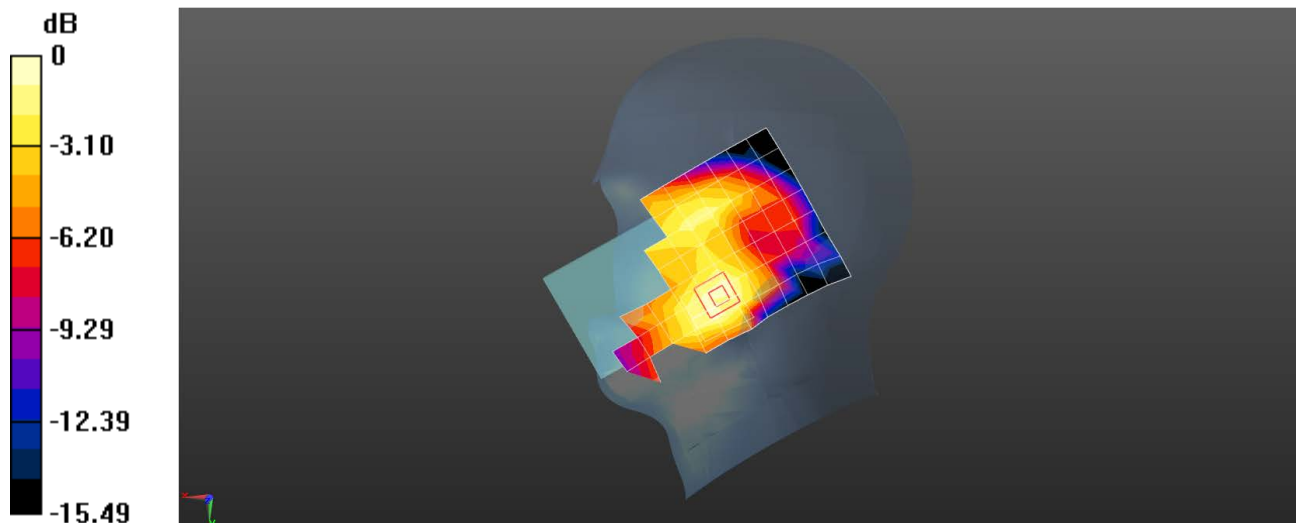
Configuration/Head/Zoom Scan (5x5x7)/Cube 0: Measurement grid: dx=8mm, dy=8mm, dz=5mm

Reference Value = 3.829 V/m; Power Drift = -0.15 dB

Peak SAR (extrapolated) = 0.101 W/kg

SAR(1 g) = 0.066 W/kg; SAR(10 g) = 0.043 W/kg

Maximum value of SAR (measured) = 0.0847 W/kg



0 dB = 0.0847 W/kg = -10.72 dBW/kg

Test Laboratory: SGS-SAR Lab

V2247 WCDMA Band IV RMC 1412CH Back side 15mm Ant13

DUT: V2247; Type: Mobile Phone; Serial: 863548060193491

Communication System: UID 0, WCDMA (0); Frequency: 1732.4 MHz; Duty Cycle: 1:1

Medium: HSL1750; Medium parameters used: $f = 1732.4$ MHz; $\sigma = 1.334$ S/m; $\epsilon_r = 40.371$; $\rho = 1000$ kg/m³

Phantom section: Flat Section

DASY 5 Configuration:

- Probe: EX3DV4 - SN3789; ConvF(7.65, 7.65, 7.65); Calibrated: 2022/9/30
- Sensor-Surface: 1.4mm (Mechanical Surface Detection)
- Electronics: DAE4 Sn702; Calibrated: 2022/11/9
- Phantom: SAM 4; Type: SAM; Serial: 1913
- DASY52 52.10.4(1527); SEMCAD X 14.6.14(7483)

Configuration/Body/Area Scan (8x13x1): Measurement grid: dx=15mm, dy=15mm

Maximum value of SAR (measured) = 0.362 W/kg

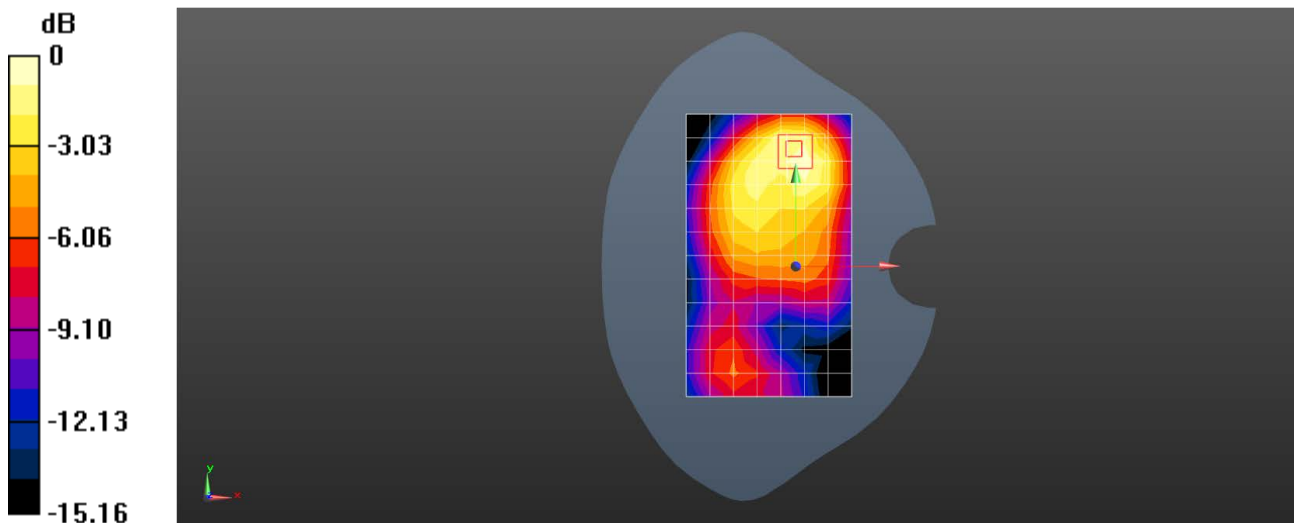
Configuration/Body/Zoom Scan (5x5x7)/Cube 0: Measurement grid: dx=8mm, dy=8mm, dz=5mm

Reference Value = 8.476 V/m; Power Drift = -0.01 dB

Peak SAR (extrapolated) = 0.441 W/kg

SAR(1 g) = 0.261 W/kg; SAR(10 g) = 0.155 W/kg

Maximum value of SAR (measured) = 0.369 W/kg



0 dB = 0.369 W/kg = -4.33 dBW/kg

Test Laboratory: SGS-SAR Lab

V2247 WCDMA Band IV RMC 1412CH Top side 10mm Ant13

DUT: V2247; Type: Mobile Phone; Serial: 863548060193491

Communication System: UID 0, WCDMA (0); Frequency: 1732.4 MHz; Duty Cycle: 1:1

Medium: HSL1750; Medium parameters used: $f = 1732.4$ MHz; $\sigma = 1.334$ S/m; $\epsilon_r = 40.371$; $\rho = 1000$ kg/m³

Phantom section: Flat Section

DASY 5 Configuration:

- Probe: EX3DV4 - SN3789; ConvF(7.65, 7.65, 7.65); Calibrated: 2022/9/30
- Sensor-Surface: 1.4mm (Mechanical Surface Detection)
- Electronics: DAE4 Sn702; Calibrated: 2022/11/9
- Phantom: SAM 4; Type: SAM; Serial: 1913
- DASY52 52.10.4(1527); SEMCAD X 14.6.14(7483)

Configuration/Body/Area Scan (5x9x1): Measurement grid: dx=15mm, dy=15mm

Maximum value of SAR (measured) = 0.454 W/kg

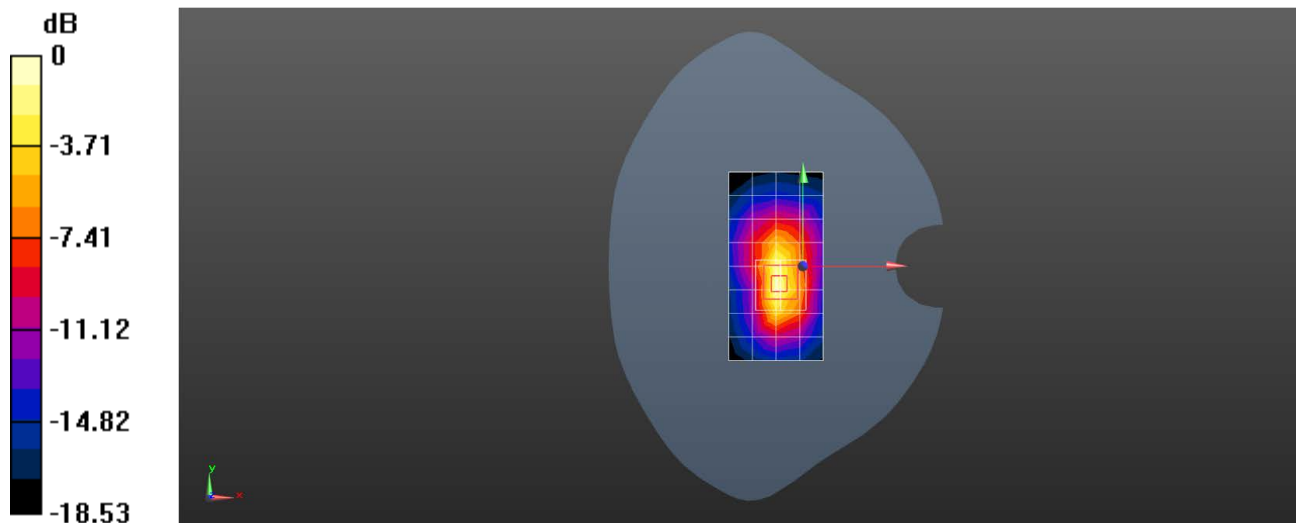
Configuration/Body/Zoom Scan (5x5x7)/Cube 0: Measurement grid: dx=8mm, dy=8mm, dz=5mm

Reference Value = 14.68 V/m; Power Drift = -0.19 dB

Peak SAR (extrapolated) = 0.607 W/kg

SAR(1 g) = 0.324 W/kg; SAR(10 g) = 0.161 W/kg

Maximum value of SAR (measured) = 0.511 W/kg



0 dB = 0.511 W/kg = -2.92 dBW/kg

Test Laboratory: SGS-SAR Lab

V2247 WCDMA Band V RMC 4182CH Right cheek Ant13

DUT: V2247; Type: Mobile Phone; Serial: 863548060193558

Communication System: UID 0, WCDMA (0); Frequency: 836.4 MHz; Duty Cycle: 1:1

Medium: HSL835; Medium parameters used: $f = 836.4$ MHz; $\sigma = 0.91$ S/m; $\epsilon_r = 42.637$; $\rho = 1000$ kg/m³

Phantom section: Right Section

DASY 5 Configuration:

- Probe: ES3DV3 - SN3137; ConvF(6.09, 6.09, 6.09); Calibrated: 2022/9/16
- Sensor-Surface: 3mm (Mechanical Surface Detection)
- Electronics: DAE4 Sn896; Calibrated: 2023/3/17
- Phantom: SAM 6; Type: SAM Twin; Serial: 1481
- DASY52 52.10.4(1527); SEMCAD X 14.6.14(7483)

Configuration/Head/Area Scan (8x14x1): Measurement grid: dx=15mm, dy=15mm

Maximum value of SAR (measured) = 0.656 W/kg

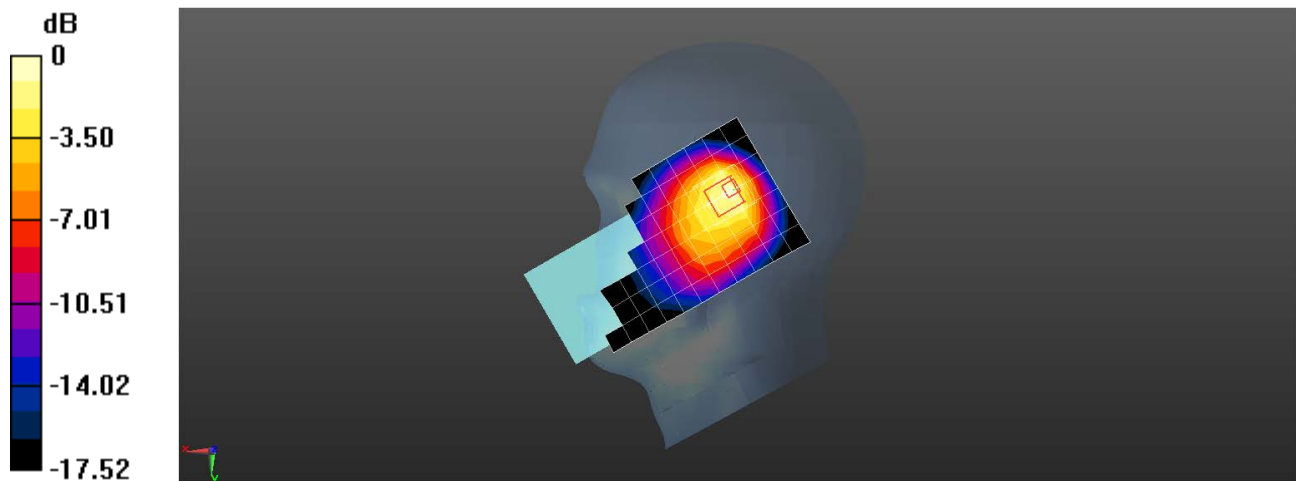
Configuration/Head/Zoom Scan (5x5x7)/Cube 0: Measurement grid: dx=8mm, dy=8mm, dz=5mm

Reference Value = 22.30 V/m; Power Drift = -0.07 dB

Peak SAR (extrapolated) = 1.27 W/kg

SAR(1 g) = 0.540 W/kg; SAR(10 g) = 0.303 W/kg

Maximum value of SAR (measured) = 0.691 W/kg



0 dB = 0.691 W/kg = -1.61 dBW/kg

Test Laboratory: SGS-SAR Lab

V2247 WCDMA Band V RMC 4182CH Back side 15mm Ant13

DUT: V2247; Type: Mobile Phone; Serial: 863548060193558

Communication System: UID 0, WCDMA (0); Frequency: 836.4 MHz; Duty Cycle: 1:1

Medium: HSL835; Medium parameters used: $f = 836.4$ MHz; $\sigma = 0.91$ S/m; $\epsilon_r = 42.637$; $\rho = 1000$ kg/m³

Phantom section: Flat Section

DASY 5 Configuration:

- Probe: ES3DV3 - SN3137; ConvF(6.09, 6.09, 6.09); Calibrated: 2022/9/16
- Sensor-Surface: 3mm (Mechanical Surface Detection)
- Electronics: DAE4 Sn896; Calibrated: 2023/3/17
- Phantom: SAM 6; Type: SAM Twin; Serial: 1481
- DASY52 52.10.4(1527); SEMCAD X 14.6.14(7483)

Configuration/Body/Area Scan (8x13x1): Measurement grid: dx=15mm, dy=15mm

Maximum value of SAR (measured) = 0.213 W/kg

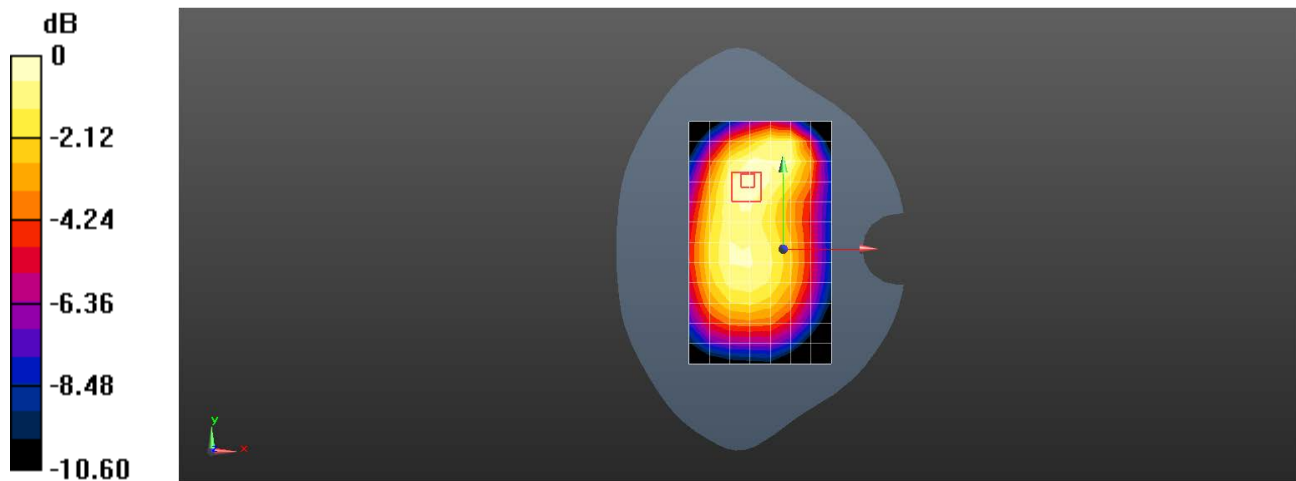
Configuration/Body/Zoom Scan (5x5x7)/Cube 0: Measurement grid: dx=8mm, dy=8mm, dz=5mm

Reference Value = 13.58 V/m; Power Drift = 0.05 dB

Peak SAR (extrapolated) = 0.261 W/kg

SAR(1 g) = 0.188 W/kg; SAR(10 g) = 0.133 W/kg

Maximum value of SAR (measured) = 0.213 W/kg



0 dB = 0.213 W/kg = -6.72 dBW/kg

Test Laboratory: SGS-SAR Lab

V2247 WCDMA Band V RMC 4182CH Back side 10mm Ant13

DUT: V2247; Type: Mobile Phone; Serial: 863548060193558

Communication System: UID 0, WCDMA (0); Frequency: 836.4 MHz; Duty Cycle: 1:1

Medium: HSL835; Medium parameters used: $f = 836.4$ MHz; $\sigma = 0.91$ S/m; $\epsilon_r = 42.637$; $\rho = 1000$ kg/m³

Phantom section: Flat Section

DASY 5 Configuration:

- Probe: ES3DV3 - SN3137; ConvF(6.09, 6.09, 6.09); Calibrated: 2022/9/16
- Sensor-Surface: 3mm (Mechanical Surface Detection)
- Electronics: DAE4 Sn896; Calibrated: 2023/3/17
- Phantom: SAM 6; Type: SAM Twin; Serial: 1481
- DASY52 52.10.4(1527); SEMCAD X 14.6.14(7483)

Configuration/Body/Area Scan (8x13x1): Measurement grid: dx=15mm, dy=15mm

Maximum value of SAR (measured) = 0.395 W/kg

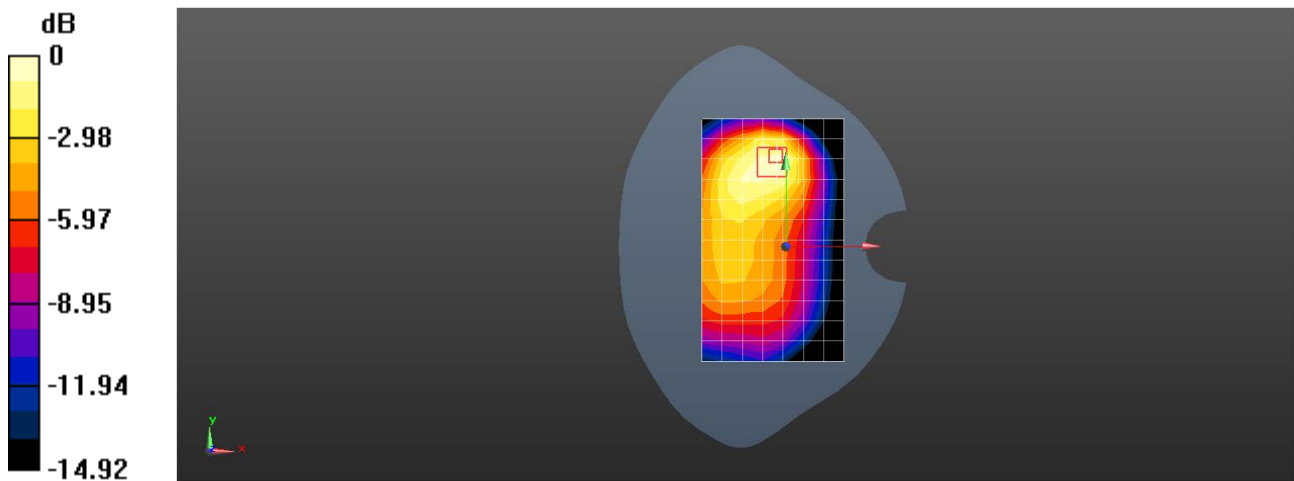
Configuration/Body/Zoom Scan (5x5x7)/Cube 0: Measurement grid: dx=8mm, dy=8mm, dz=5mm

Reference Value = 12.73 V/m; Power Drift = -0.06 dB

Peak SAR (extrapolated) = 0.601 W/kg

SAR(1 g) = 0.345 W/kg; SAR(10 g) = 0.211 W/kg

Maximum value of SAR (measured) = 0.404 W/kg



0 dB = 0.404 W/kg = -3.94 dBW/kg

Test Laboratory: SGS-SAR Lab

V2247 LTE Band 2 20M QPSK 1RB0 18900CH Left cheek Ant31

DUT: V2247; Type: Mobile Phone; Serial: 863548060193491

Communication System: UID 0, LTE-FDD BW 20MHz (0); Frequency: 1880 MHz;Duty Cycle: 1:1

Medium: HSL1900;Medium parameters used: $f = 1880$ MHz; $\sigma = 1.398$ S/m; $\epsilon_r = 40.37$; $\rho = 1000$ kg/m³

Phantom section: Left Section

DASY 5 Configuration:

- Probe: EX3DV4 - SN3789; ConvF(7.3, 7.3, 7.3); Calibrated: 2022/9/30
- Sensor-Surface: 1.4mm (Mechanical Surface Detection)
- Electronics: DAE4 Sn702; Calibrated: 2022/11/9
- Phantom: SAM 4; Type: SAM; Serial: 1913
- DASY52 52.10.4(1527); SEMCAD X 14.6.14(7483)

Configuration/Head/Area Scan (8x13x1): Measurement grid: dx=15mm, dy=15mm

Maximum value of SAR (measured) = 0.105 W/kg

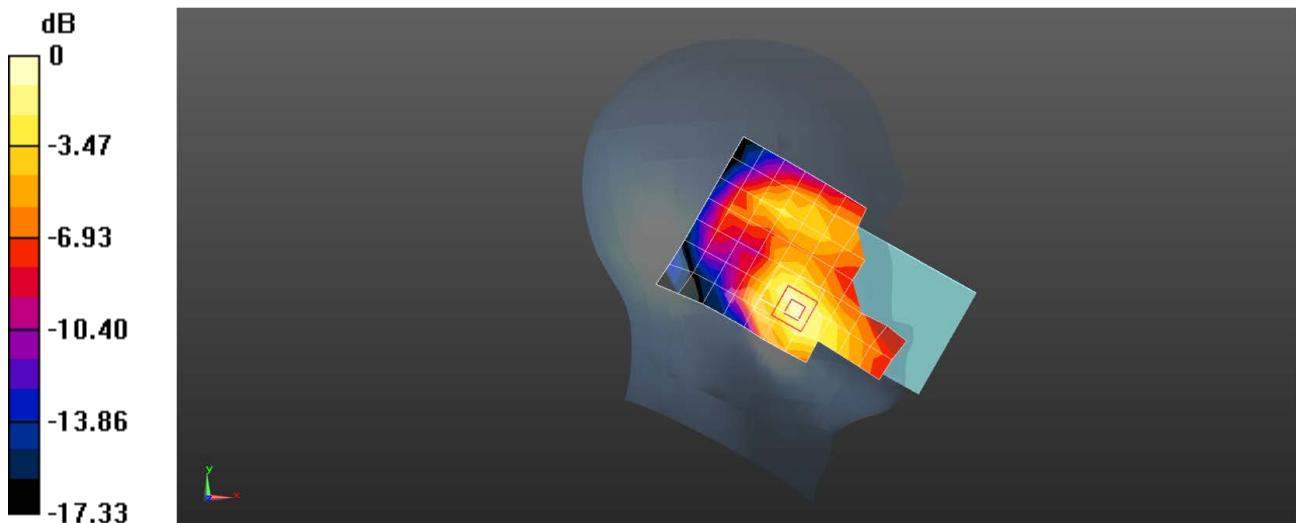
Configuration/Head/Zoom Scan (5x5x7)/Cube 0: Measurement grid: dx=8mm, dy=8mm, dz=5mm

Reference Value = 4.063 V/m; Power Drift = -0.01 dB

Peak SAR (extrapolated) = 0.141 W/kg

SAR(1 g) = 0.088 W/kg; SAR(10 g) = 0.054 W/kg

Maximum value of SAR (measured) = 0.118 W/kg



0 dB = 0.118 W/kg = -9.28 dBW/kg

Test Laboratory: SGS-SAR Lab

V2247 LTE Band 2 20M QPSK 1RB50 19100CH Back side 15mm Ant13

DUT: V2247; Type: Mobile Phone; Serial: 863548060193491

Communication System: UID 0, LTE-FDD BW 20MHz (0); Frequency: 1900 MHz;Duty Cycle: 1:1

Medium: HSL1900;Medium parameters used: $f = 1900$ MHz; $\sigma = 1.405$ S/m; $\epsilon_r = 40.336$; $\rho = 1000$ kg/m³

Phantom section: Flat Section

DASY 5 Configuration:

- Probe: EX3DV4 - SN3789; ConvF(7.3, 7.3, 7.3); Calibrated: 2022/9/30
- Sensor-Surface: 1.4mm (Mechanical Surface Detection)
- Electronics: DAE4 Sn702; Calibrated: 2022/11/9
- Phantom: SAM 4; Type: SAM; Serial: 1913
- DASY52 52.10.4(1527); SEMCAD X 14.6.14(7483)

Configuration/Body/Area Scan (8x13x1): Measurement grid: dx=15mm, dy=15mm

Maximum value of SAR (measured) = 0.670 W/kg

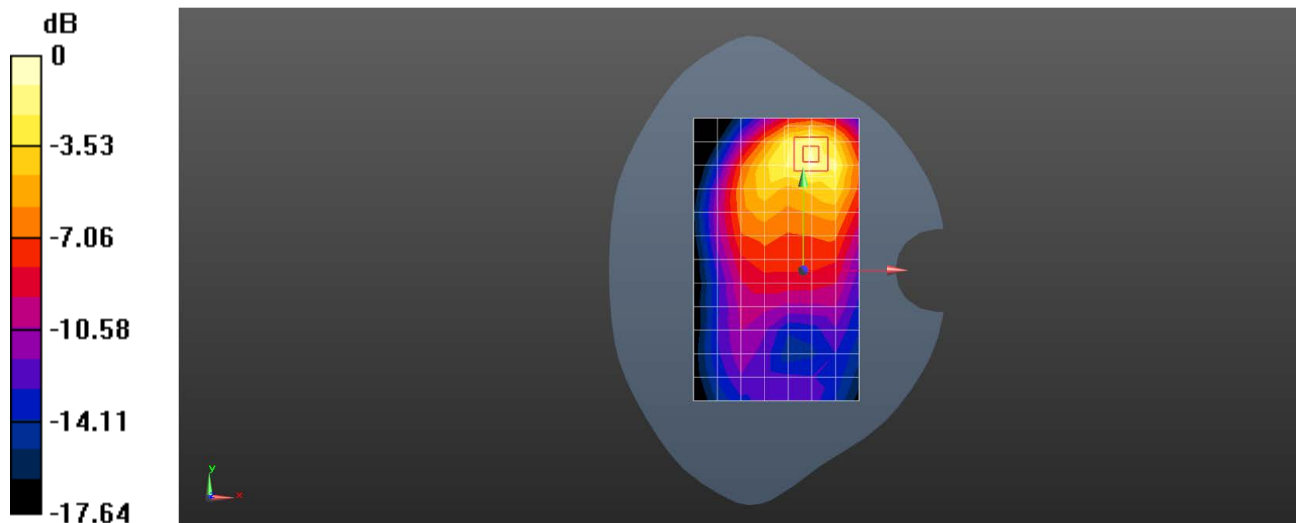
Configuration/Body/Zoom Scan (5x5x7)/Cube 0: Measurement grid: dx=8mm, dy=8mm, dz=5mm

Reference Value = 8.473 V/m; Power Drift = 0.05 dB

Peak SAR (extrapolated) = 0.973 W/kg

SAR(1 g) = 0.564 W/kg; SAR(10 g) = 0.315 W/kg

Maximum value of SAR (measured) = 0.819 W/kg



0 dB = 0.819 W/kg = -0.87 dBW/kg

Test Laboratory: SGS-SAR Lab

V2247 LTE Band 2 20M QPSK 1RB0 18900CH Top side 10mm Ant13

DUT: V2247; Type: Mobile Phone; Serial: 863548060193491

Communication System: UID 0, LTE-FDD BW 20MHz (0); Frequency: 1880 MHz; Duty Cycle: 1:1

Medium: HSL1900; Medium parameters used: $f = 1880$ MHz; $\sigma = 1.398$ S/m; $\epsilon_r = 40.37$; $\rho = 1000$ kg/m³

Phantom section: Flat Section

DASY 5 Configuration:

- Probe: EX3DV4 - SN3789; ConvF(7.3, 7.3, 7.3); Calibrated: 2022/9/30
- Sensor-Surface: 1.4mm (Mechanical Surface Detection)
- Electronics: DAE4 Sn702; Calibrated: 2022/11/9
- Phantom: SAM 4; Type: SAM; Serial: 1913
- DASY52 52.10.4(1527); SEMCAD X 14.6.14(7483)

Configuration/Body/Area Scan (5x9x1): Measurement grid: dx=15mm, dy=15mm

Maximum value of SAR (measured) = 0.620 W/kg

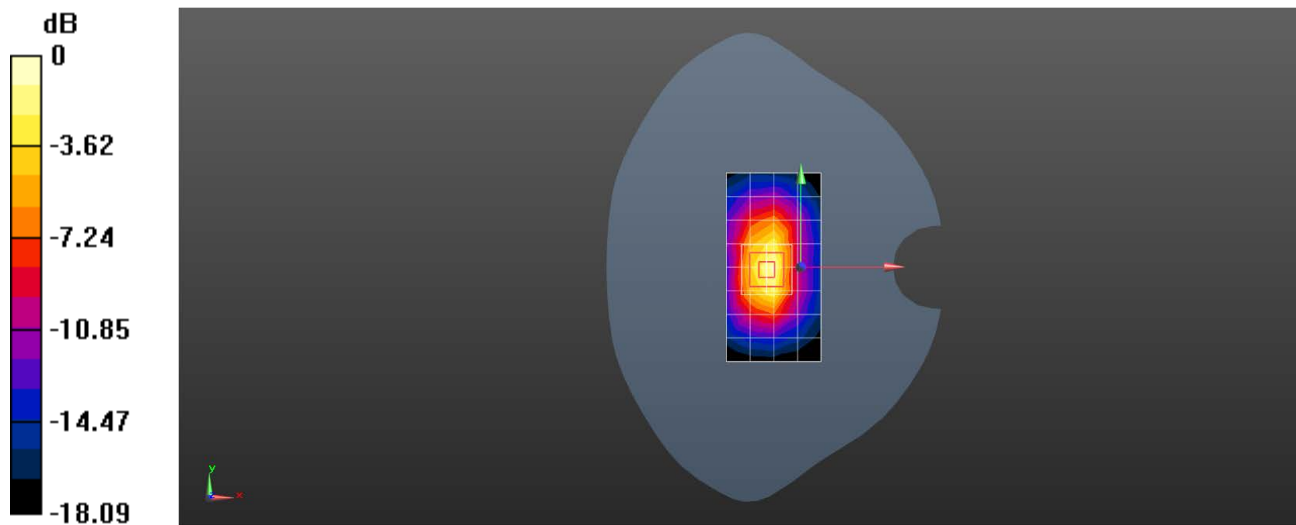
Configuration/Body/Zoom Scan (5x5x7)/Cube 0: Measurement grid: dx=8mm, dy=8mm, dz=5mm

Reference Value = 17.84 V/m; Power Drift = 0.13 dB

Peak SAR (extrapolated) = 0.853 W/kg

SAR(1 g) = 0.456 W/kg; SAR(10 g) = 0.232 W/kg

Maximum value of SAR (measured) = 0.716 W/kg



0 dB = 0.716 W/kg = -1.45 dBW/kg

Test Laboratory: SGS-SAR Lab

V2247 LTE Band 2 20M QPSK 1RB50 19100CH Back side 0mm Ant13

DUT: V2247; Type: Mobile Phone; Serial: 863548060193491

Communication System: UID 0, LTE-FDD BW 20MHz (0); Frequency: 1900 MHz; Duty Cycle: 1:1

Medium: HSL1900; Medium parameters used: $f = 1900$ MHz; $\sigma = 1.405$ S/m; $\epsilon_r = 40.336$; $\rho = 1000$ kg/m³

Phantom section: Flat Section

DASY 5 Configuration:

- Probe: EX3DV4 - SN3789; ConvF(7.3, 7.3, 7.3); Calibrated: 2022/9/30
- Sensor-Surface: 1.4mm (Mechanical Surface Detection)
- Electronics: DAE4 Sn702; Calibrated: 2022/11/9
- Phantom: SAM 4; Type: SAM; Serial: 1913
- DASY52 52.10.4(1527); SEMCAD X 14.6.14(7483)

Configuration/Body/Area Scan (8x13x1): Measurement grid: dx=15mm, dy=15mm

Maximum value of SAR (measured) = 3.69 W/kg

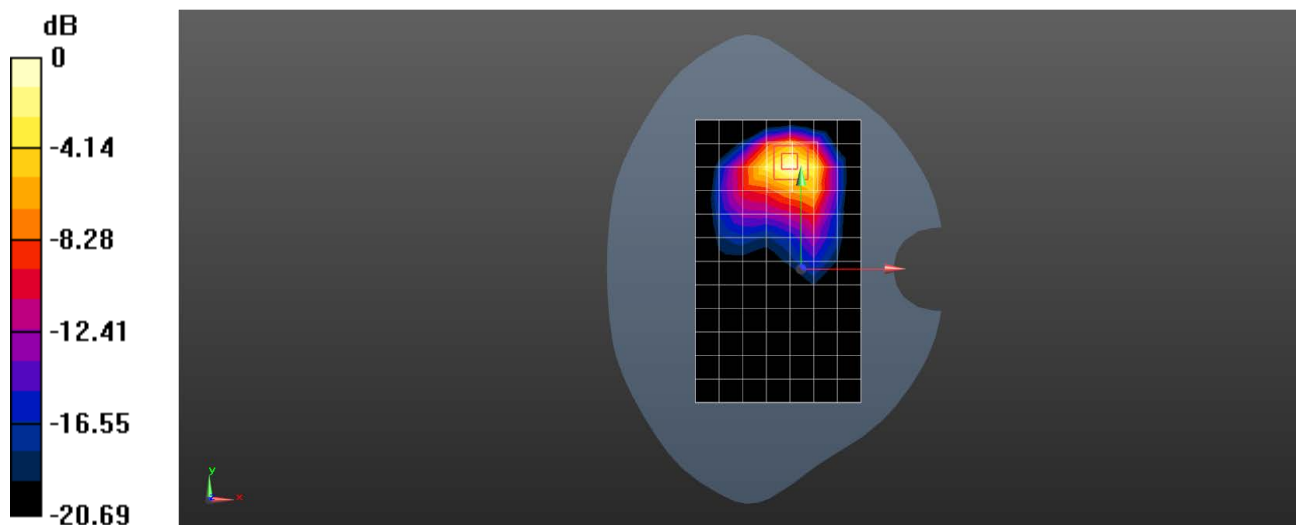
Configuration/Body/Zoom Scan (5x5x7)/Cube 0: Measurement grid: dx=8mm, dy=8mm, dz=5mm

Reference Value = 4.067 V/m; Power Drift = -0.02 dB

Peak SAR (extrapolated) = 5.48 W/kg

SAR(1 g) = 2.33 W/kg; SAR(10 g) = 1.03 W/kg

Maximum value of SAR (measured) = 3.81 W/kg



0 dB = 3.81 W/kg = 5.81 dBW/kg

Test Laboratory: SGS-SAR Lab

V2247 LTE Band 4 20M QPSK 1RB50 20300CH Left cheek Ant31

DUT: V2247; Type: Mobile Phone; Serial: 863548060193491

Communication System: UID 0, LTE-FDD BW 20MHz (0); Frequency: 1745 MHz;Duty Cycle: 1:1

Medium: HSL1750;Medium parameters used: $f = 1745$ MHz; $\sigma = 1.34$ S/m; $\epsilon_r = 40.365$; $\rho = 1000$ kg/m³

Phantom section: Left Section

DASY 5 Configuration:

- Probe: EX3DV4 - SN3789; ConvF(7.65, 7.65, 7.65); Calibrated: 2022/9/30
- Sensor-Surface: 1.4mm (Mechanical Surface Detection)
- Electronics: DAE4 Sn702; Calibrated: 2022/11/9
- Phantom: SAM 4; Type: SAM; Serial: 1913
- DASY52 52.10.4(1527); SEMCAD X 14.6.14(7483)

Configuration/Head/Area Scan (8x13x1): Measurement grid: dx=15mm, dy=15mm

Maximum value of SAR (measured) = 0.0975 W/kg

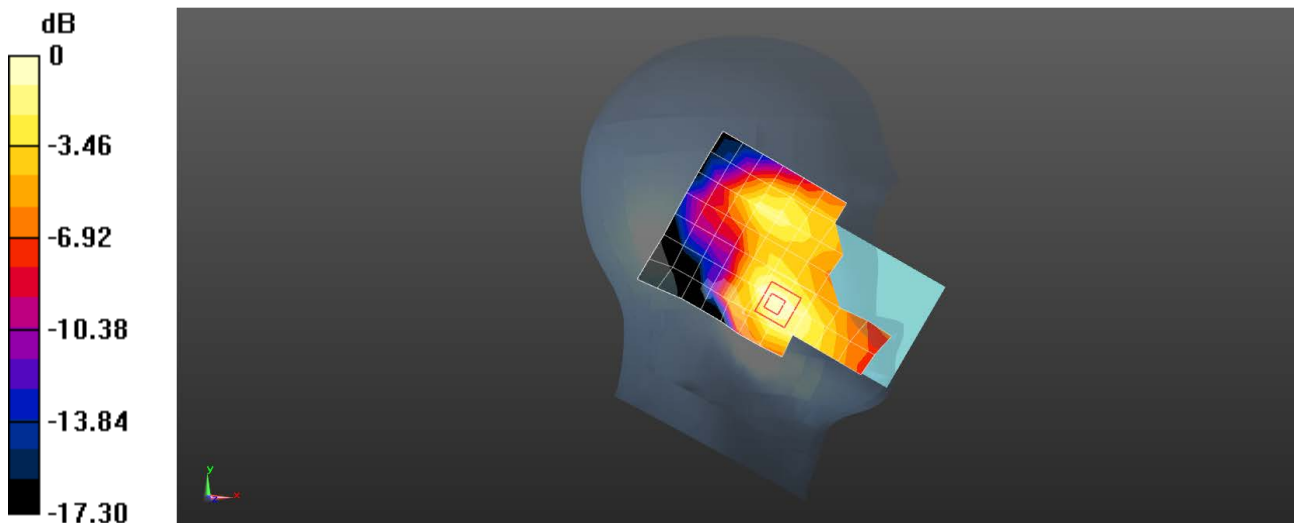
Configuration/Head/Zoom Scan (5x5x7)/Cube 0: Measurement grid: dx=8mm, dy=8mm, dz=5mm

Reference Value = 3.044 V/m; Power Drift = 0.11 dB

Peak SAR (extrapolated) = 0.128 W/kg

SAR(1 g) = 0.082 W/kg; SAR(10 g) = 0.052 W/kg

Maximum value of SAR (measured) = 0.106 W/kg



Test Laboratory: SGS-SAR Lab

V2247 LTE Band 4 20M QPSK 1RB50 20175CH Back side 15mm Ant13

DUT: V2247; Type: Mobile Phone; Serial: 863548060193491

Communication System: UID 0, LTE-FDD BW 20MHz (0); Frequency: 1732.5 MHz; Duty Cycle: 1:1

Medium: HSL1750; Medium parameters used: $f = 1732.5$ MHz; $\sigma = 1.334$ S/m; $\epsilon_r = 40.371$; $\rho = 1000$ kg/m³
Phantom section: Flat Section

DASY 5 Configuration:

- Probe: EX3DV4 - SN3789; ConvF(7.65, 7.65, 7.65); Calibrated: 2022/9/30
- Sensor-Surface: 1.4mm (Mechanical Surface Detection)
- Electronics: DAE4 Sn702; Calibrated: 2022/11/9
- Phantom: SAM 4; Type: SAM; Serial: 1913
- DASY52 52.10.4(1527); SEMCAD X 14.6.14(7483)

Configuration/Body/Area Scan (8x13x1): Measurement grid: dx=15mm, dy=15mm

Maximum value of SAR (measured) = 0.316 W/kg

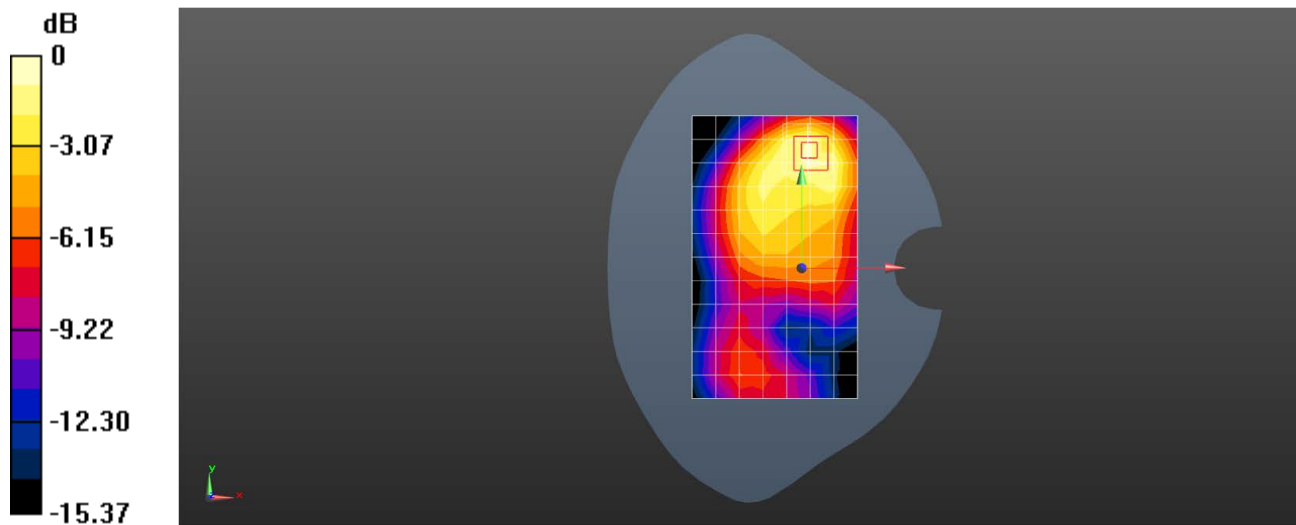
Configuration/Body/Zoom Scan (5x5x7)/Cube 0: Measurement grid: dx=8mm, dy=8mm, dz=5mm

Reference Value = 8.373 V/m; Power Drift = 0.04 dB

Peak SAR (extrapolated) = 0.438 W/kg

SAR(1 g) = 0.258 W/kg; SAR(10 g) = 0.154 W/kg

Maximum value of SAR (measured) = 0.373 W/kg



0 dB = 0.373 W/kg = -4.28 dBW/kg

Test Laboratory: SGS-SAR Lab

V2247 LTE Band 4 20M QPSK 1RB0 20300CH Bottom side 10mm Ant31

DUT: V2247; Type: Mobile Phone; Serial: 863548060193590

Communication System: UID 0, LTE-FDD BW 20MHz (0); Frequency: 1745 MHz; Duty Cycle: 1:1

Medium: HSL1750; Medium parameters used: $f = 1745$ MHz; $\sigma = 1.34$ S/m; $\epsilon_r = 40.365$; $\rho = 1000$ kg/m³

Phantom section: Flat Section

DASY 5 Configuration:

- Probe: EX3DV4 - SN3789; ConvF(7.65, 7.65, 7.65); Calibrated: 2022/9/30
- Sensor-Surface: 1.4mm (Mechanical Surface Detection)
- Electronics: DAE4 Sn702; Calibrated: 2022/11/9
- Phantom: SAM 4; Type: SAM; Serial: 1913
- DASY52 52.10.4(1527); SEMCAD X 14.6.14(7483)

Configuration/Body/Area Scan (5x8x1): Measurement grid: dx=15mm, dy=15mm

Maximum value of SAR (measured) = 0.595 W/kg

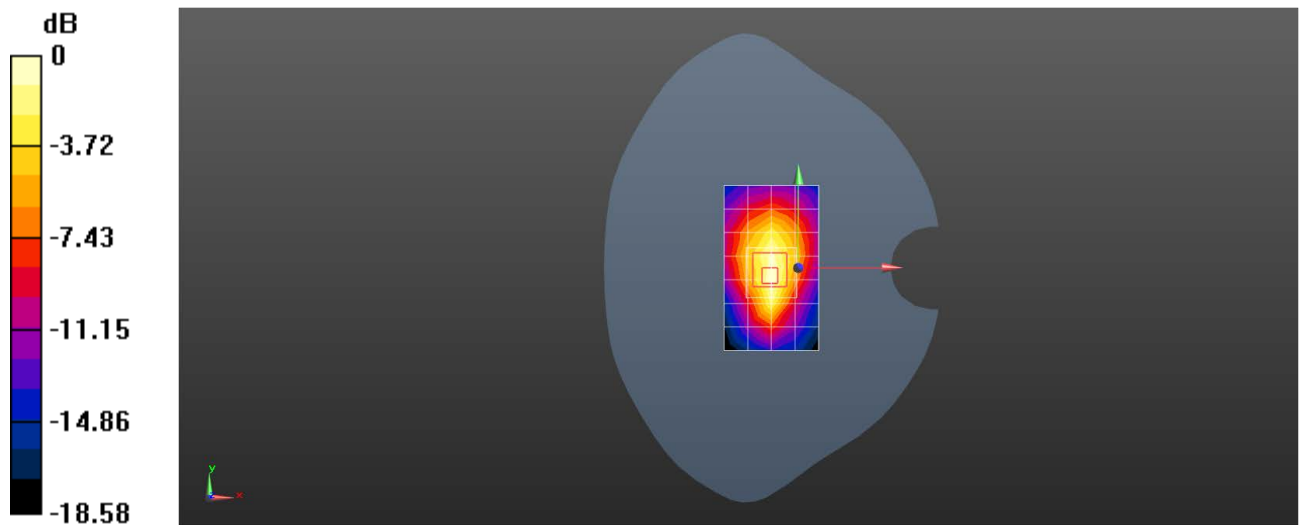
Configuration/Body/Zoom Scan (5x5x7)/Cube 0: Measurement grid: dx=8mm, dy=8mm, dz=5mm

Reference Value = 17.73 V/m; Power Drift = 0.01 dB

Peak SAR (extrapolated) = 0.695 W/kg

SAR(1 g) = 0.394 W/kg; SAR(10 g) = 0.219 W/kg

Maximum value of SAR (measured) = 0.579 W/kg



0 dB = 0.579 W/kg = -2.37 dBW/kg

Test Laboratory: SGS-SAR Lab

V2247 LTE Band 5 10M QPSK 1RB49 20450CH Right cheek Ant13

DUT: V2247; Type: Mobile Phone; Serial: 863548060193558

Communication System: UID 0, LTE-FDD BW 10MHZ (0); Frequency: 829 MHz; Duty Cycle: 1:1

Medium: HSL835; Medium parameters used: $f = 829$ MHz; $\sigma = 0.905$ S/m; $\epsilon_r = 42.754$; $\rho = 1000$ kg/m³

Phantom section: Right Section

DASY 5 Configuration:

- Probe: ES3DV3 - SN3137; ConvF(6.09, 6.09, 6.09); Calibrated: 2022/9/16
- Sensor-Surface: 3mm (Mechanical Surface Detection)
- Electronics: DAE4 Sn896; Calibrated: 2023/3/17
- Phantom: SAM 6; Type: SAM Twin; Serial: 1481
- DASY52 52.10.4(1527); SEMCAD X 14.6.14(7483)

Configuration/Head/Area Scan (8x14x1): Measurement grid: dx=15mm, dy=15mm

Maximum value of SAR (measured) = 0.768 W/kg

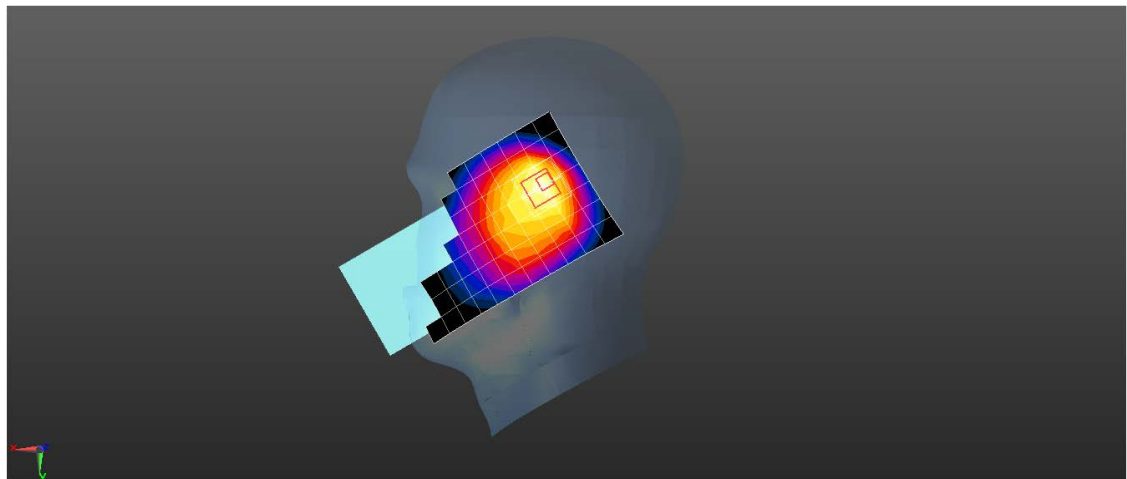
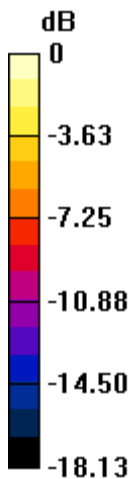
Configuration/Head/Zoom Scan (5x5x7)/Cube 0: Measurement grid: dx=8mm, dy=8mm, dz=5mm

Reference Value = 22.97 V/m; Power Drift = 0.02 dB

Peak SAR (extrapolated) = 1.54 W/kg

SAR(1 g) = 0.604 W/kg; SAR(10 g) = 0.328 W/kg

Maximum value of SAR (measured) = 0.743 W/kg



0 dB = 0.743 W/kg = -1.29 dBW/kg

Test Laboratory: SGS-SAR Lab

V2247 LTE Band 5 10M QPSK 1RB0 20450CH Front side 15mm Ant13

DUT: V2247; Type: Mobile Phone; Serial: 863548060193558

Communication System: UID 0, LTE-FDD BW 10MHZ (0); Frequency: 829 MHz;Duty Cycle: 1:1

Medium: HSL835;Medium parameters used: $f = 829$ MHz; $\sigma = 0.905$ S/m; $\epsilon_r = 42.754$; $\rho = 1000$ kg/m³

Phantom section: Flat Section

DASY 5 Configuration:

- Probe: ES3DV3 - SN3137; ConvF(6.09, 6.09, 6.09); Calibrated: 2022/9/16
- Sensor-Surface: 3mm (Mechanical Surface Detection)
- Electronics: DAE4 Sn896; Calibrated: 2023/3/17
- Phantom: SAM 6; Type: SAM Twin; Serial: 1481
- DASY52 52.10.4(1527); SEMCAD X 14.6.14(7483)

Configuration/Body/Area Scan (8x14x1): Measurement grid: dx=15mm, dy=15mm

Maximum value of SAR (measured) = 0.194 W/kg

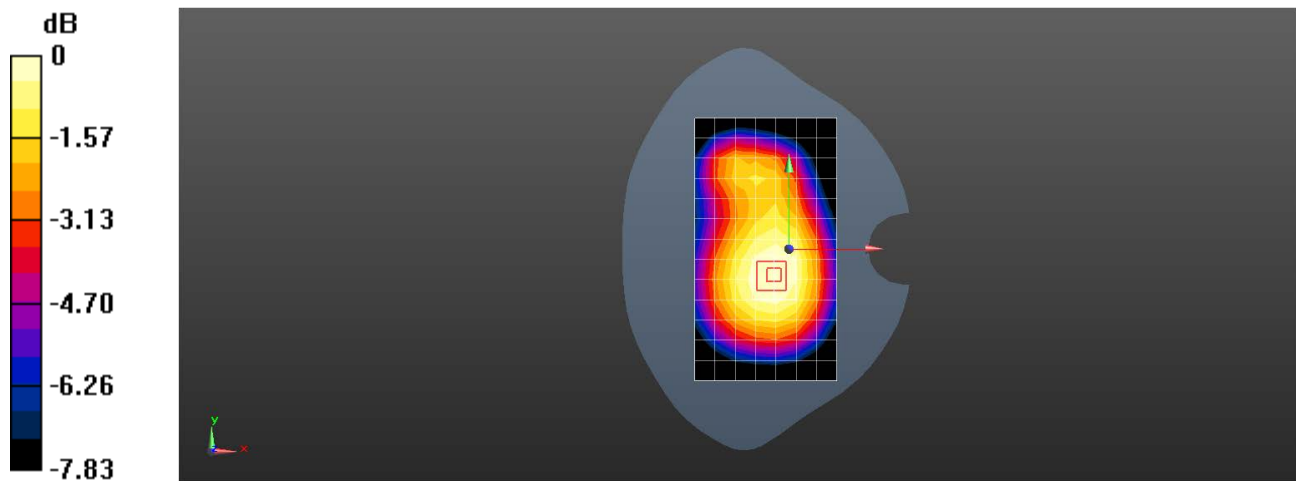
Configuration/Body/Zoom Scan (5x5x7)/Cube 0: Measurement grid: dx=8mm, dy=8mm, dz=5mm

Reference Value = 13.98 V/m; Power Drift = -0.06 dB

Peak SAR (extrapolated) = 0.217 W/kg

SAR(1 g) = 0.173 W/kg; SAR(10 g) = 0.132 W/kg

Maximum value of SAR (measured) = 0.190 W/kg



0 dB = 0.190 W/kg = -7.21 dBW/kg

Test Laboratory: SGS-SAR Lab

V2247 LTE Band 5 10M QPSK 1RB0 20450CH Back side 10mm Ant13

DUT: V2247; Type: Mobile Phone; Serial: 863548060193558

Communication System: UID 0, LTE-FDD BW 10MHZ (0); Frequency: 829 MHz;Duty Cycle: 1:1

Medium: HSL835;Medium parameters used: $f = 829$ MHz; $\sigma = 0.905$ S/m; $\epsilon_r = 42.754$; $\rho = 1000$ kg/m³

Phantom section: Flat Section

DASY 5 Configuration:

- Probe: ES3DV3 - SN3137; ConvF(6.09, 6.09, 6.09); Calibrated: 2022/9/16
- Sensor-Surface: 3mm (Mechanical Surface Detection)
- Electronics: DAE4 Sn896; Calibrated: 2023/3/17
- Phantom: SAM 6; Type: SAM Twin; Serial: 1481
- DASY52 52.10.4(1527); SEMCAD X 14.6.14(7483)

Configuration/Body/Area Scan (8x13x1): Measurement grid: dx=15mm, dy=15mm

Maximum value of SAR (measured) = 0.367 W/kg

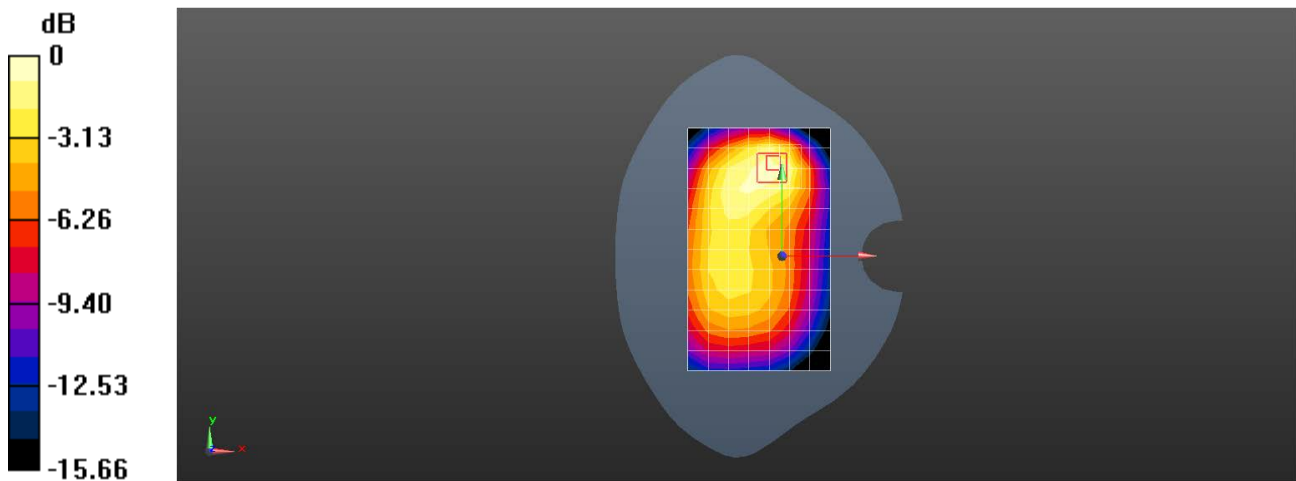
Configuration/Body/Zoom Scan (5x5x7)/Cube 0: Measurement grid: dx=8mm, dy=8mm, dz=5mm

Reference Value = 13.60 V/m; Power Drift = 0.01 dB

Peak SAR (extrapolated) = 0.606 W/kg

SAR(1 g) = 0.335 W/kg; SAR(10 g) = 0.201 W/kg

Maximum value of SAR (measured) = 0.387 W/kg



0 dB = 0.387 W/kg = -4.12 dBW/kg

Test Laboratory: SGS-SAR Lab

V2247 LTE Band 7 20M QPSK 1RB50 21350CH Right cheek Ant31

DUT: V2247; Type: Mobile Phone; Serial: 863548060193590

Communication System: UID 0, LTE-FDD BW 20MHz (0); Frequency: 2560 MHz;Duty Cycle: 1:1

Medium: HSL2600;Medium parameters used: $f = 2560$ MHz; $\sigma = 1.941$ S/m; $\epsilon_r = 40.055$; $\rho = 1000$ kg/m³

Phantom section: Right Section

DASY 5 Configuration:

- Probe: EX3DV4 - SN7620; ConvF(8, 8, 8); Calibrated: 2022/11/20
- Sensor-Surface: 1.4mm (Mechanical Surface Detection)
- Electronics: DAE4 Sn1267; Calibrated: 2022/12/10
- Phantom: SAM 2; Type: SAM Twin; Serial: 1640
- DASY52 52.10.4(1527); SEMCAD X 14.6.14(7483)

Configuration/Head/Area Scan (10x16x1): Measurement grid: dx=12mm, dy=12mm

Maximum value of SAR (measured) = 0.435 W/kg

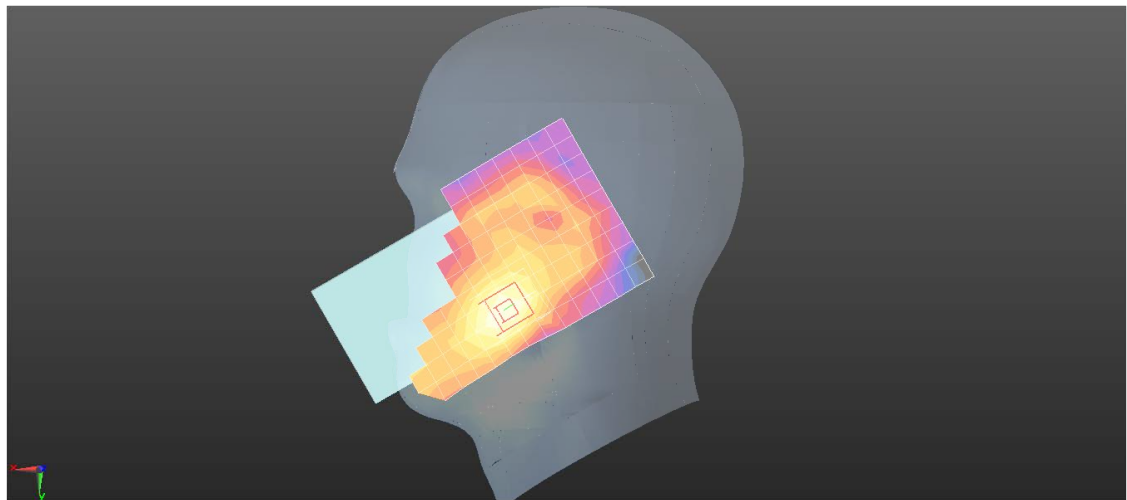
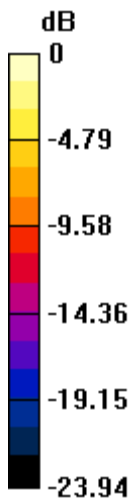
Configuration/Head/Zoom Scan (7x7x7)/Cube 0: Measurement grid: dx=5mm, dy=5mm, dz=5mm

Reference Value = 4.300 V/m; Power Drift = -0.04 dB

Peak SAR (extrapolated) = 0.602 W/kg

SAR(1 g) = 0.314 W/kg; SAR(10 g) = 0.160 W/kg

Maximum value of SAR (measured) = 0.394 W/kg



0 dB = 0.394 W/kg = -4.05 dBW/kg

Test Laboratory: SGS-SAR Lab

V2247 LTE Band 7 20M QPSK 1RB0 20850CH Back side 15mm Ant13

DUT: V2247; Type: Mobile Phone; Serial: 863548060193590

Communication System: UID 0, LTE-FDD BW 20MHz (0); Frequency: 2510 MHz;Duty Cycle: 1:1

Medium: HSL2600;Medium parameters used: $f = 2510$ MHz; $\sigma = 1.862$ S/m; $\epsilon_r = 40.167$; $\rho = 1000$ kg/m³

Phantom section: Flat Section

DASY 5 Configuration:

- Probe: EX3DV4 - SN7620; ConvF(8, 8, 8); Calibrated: 2022/11/20
- Sensor-Surface: 1.4mm (Mechanical Surface Detection)
- Electronics: DAE4 Sn1267; Calibrated: 2022/12/10
- Phantom: SAM 2; Type: SAM Twin; Serial: 1640
- DASY52 52.10.4(1527); SEMCAD X 14.6.14(7483)

Configuration/Body/Area Scan (10x16x1): Measurement grid: dx=12mm, dy=12mm

Maximum value of SAR (measured) = 0.641 W/kg

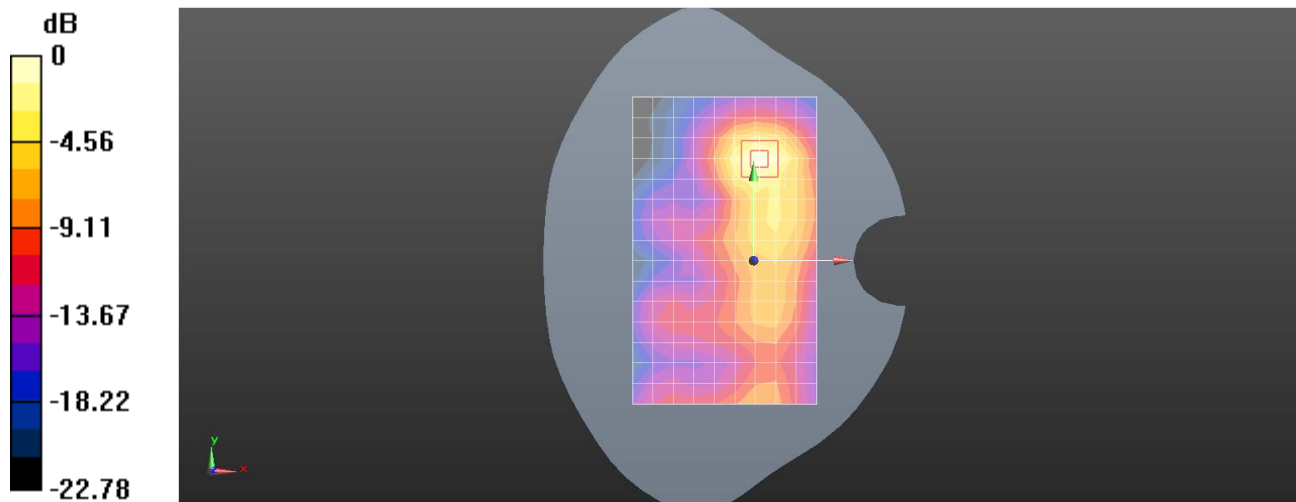
Configuration/Body/Zoom Scan (7x7x7)/Cube 0: Measurement grid: dx=5mm, dy=5mm, dz=5mm

Reference Value = 4.979 V/m; Power Drift = -0.05 dB

Peak SAR (extrapolated) = 0.836 W/kg

SAR(1 g) = 0.387 W/kg; SAR(10 g) = 0.180 W/kg

Maximum value of SAR (measured) = 0.657 W/kg



0 dB = 0.657 W/kg = -1.82 dBW/kg

Test Laboratory: SGS-SAR Lab

V2247 LTE Band 7 20M QPSK 1RB50 20850CH Top side 10mm Ant13

DUT: V2247; Type: Mobile Phone; Serial: 863548060193590

Communication System: UID 0, LTE-FDD BW 20MHz (0); Frequency: 2510 MHz; Duty Cycle: 1:1

Medium: HSL2600; Medium parameters used: $f = 2510$ MHz; $\sigma = 1.862$ S/m; $\epsilon_r = 40.167$; $\rho = 1000$ kg/m³

Phantom section: Flat Section

DASY 5 Configuration:

- Probe: EX3DV4 - SN7620; ConvF(8, 8, 8); Calibrated: 2022/11/20
- Sensor-Surface: 1.4mm (Mechanical Surface Detection)
- Electronics: DAE4 Sn1267; Calibrated: 2022/12/10
- Phantom: SAM 2; Type: SAM Twin; Serial: 1640
- DASY52 52.10.4(1527); SEMCAD X 14.6.14(7483)

Configuration/Body/Area Scan (6x11x1): Measurement grid: dx=12mm, dy=12mm

Maximum value of SAR (measured) = 0.732 W/kg

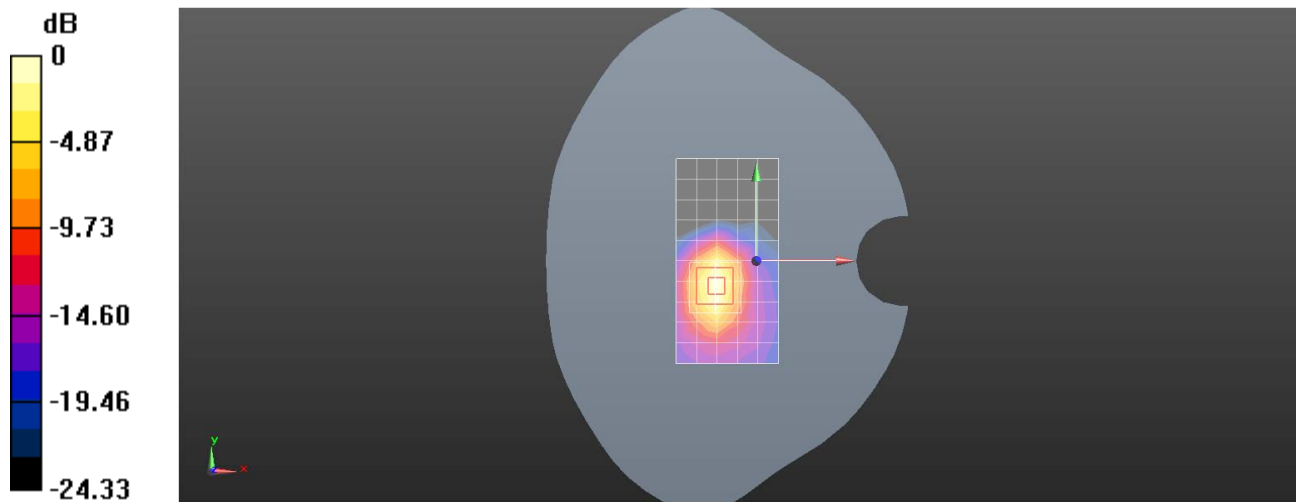
Configuration/Body/Zoom Scan (7x7x7)/Cube 0: Measurement grid: dx=5mm, dy=5mm, dz=5mm

Reference Value = 9.461 V/m; Power Drift = 0.04 dB

Peak SAR (extrapolated) = 0.954 W/kg

SAR(1 g) = 0.435 W/kg; SAR(10 g) = 0.190 W/kg

Maximum value of SAR (measured) = 0.749 W/kg



0 dB = 0.749 W/kg = -1.26 dBW/kg

Test Laboratory: SGS-SAR Lab

V2247 LTE Band 7 20M QPSK 1RB0 20850CH Top side 0mm Ant13

DUT: V2247; Type: Mobile Phone; Serial: 863548060193590

Communication System: UID 0, LTE-FDD BW 20MHz (0); Frequency: 2510 MHz;Duty Cycle: 1:1

Medium: HSL2600;Medium parameters used: $f = 2510$ MHz; $\sigma = 1.862$ S/m; $\epsilon_r = 40.167$; $\rho = 1000$ kg/m³

Phantom section: Flat Section

DASY 5 Configuration:

- Probe: EX3DV4 - SN7620; ConvF(8, 8, 8); Calibrated: 2022/11/20
- Sensor-Surface: 1.4mm (Mechanical Surface Detection)
- Electronics: DAE4 Sn1267; Calibrated: 2022/12/10
- Phantom: SAM 2; Type: SAM Twin; Serial: 1640
- DASY52 52.10.4(1527); SEMCAD X 14.6.14(7483)

Configuration/Body/Area Scan (6x11x1): Measurement grid: dx=12mm, dy=12mm

Maximum value of SAR (measured) = 3.01 W/kg

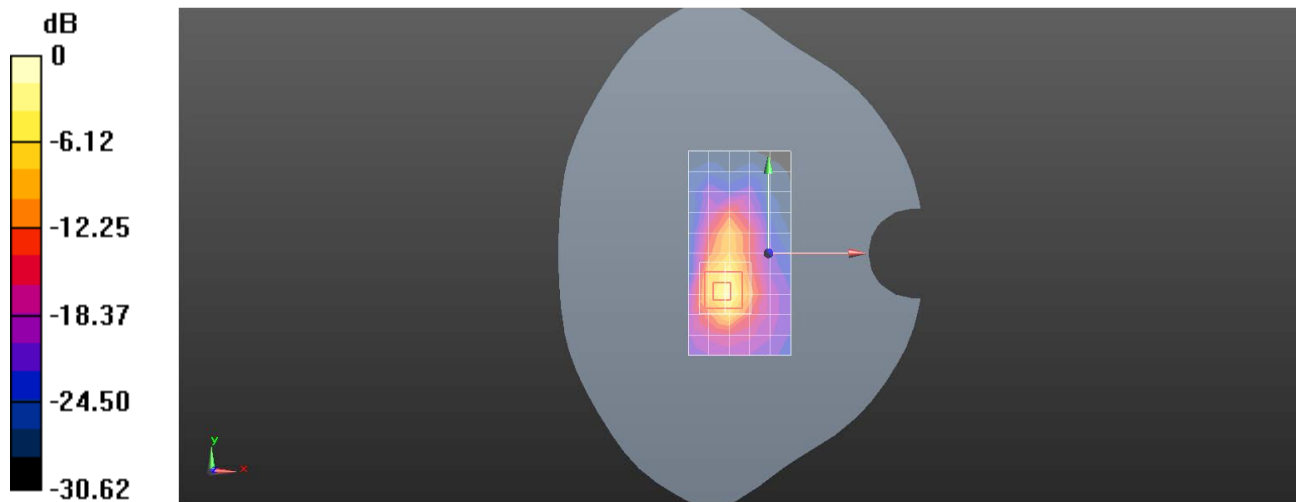
Configuration/Body/Zoom Scan (7x7x7)/Cube 0: Measurement grid: dx=5mm, dy=5mm, dz=5mm

Reference Value = 6.829 V/m; Power Drift = -0.04 dB

Peak SAR (extrapolated) = 8.88 W/kg

SAR(1 g) = 2.39 W/kg; SAR(10 g) = 0.754 W/kg

Maximum value of SAR (measured) = 5.25 W/kg



0 dB = 5.25 W/kg = 7.20 dBW/kg

Test Laboratory: SGS-SAR Lab

V2247 LTE Band 12 10M QPSK 1RB0 23095CH Right cheek Ant13

DUT: V2247; Type: Mobile Phone; Serial: 863548060193558

Communication System: UID 0, LTE-FDD BW 10MHZ (0); Frequency: 707.5 MHz;Duty Cycle: 1:1

Medium: HSL750;Medium parameters used: $f = 707.5$ MHz; $\sigma = 0.87$ S/m; $\epsilon_r = 42.548$; $\rho = 1000$ kg/m³

Phantom section: Right Section

DASY 5 Configuration:

- Probe: ES3DV3 - SN3137; ConvF(6.3, 6.3, 6.3); Calibrated: 2022/9/16
- Sensor-Surface: 3mm (Mechanical Surface Detection)
- Electronics: DAE4 Sn896; Calibrated: 2023/3/17
- Phantom: SAM 6; Type: SAM Twin; Serial: 1481
- DASY52 52.10.4(1527); SEMCAD X 14.6.14(7483)

Configuration/Head/Area Scan (8x14x1): Measurement grid: dx=15mm, dy=15mm

Maximum value of SAR (measured) = 0.807 W/kg

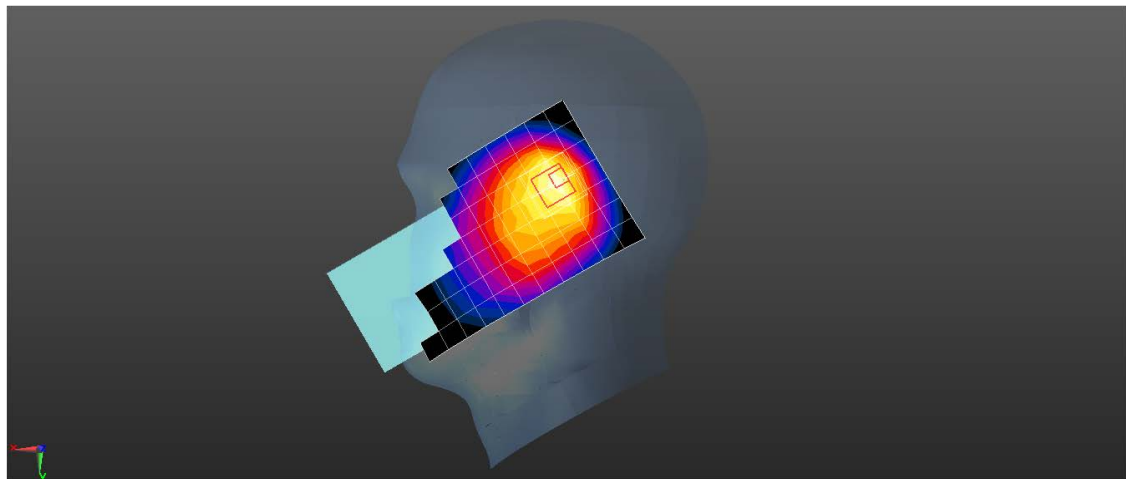
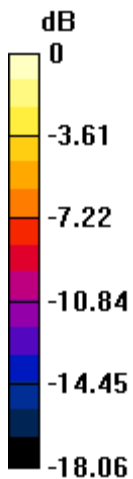
Configuration/Head/Zoom Scan (5x5x7)/Cube 0: Measurement grid: dx=8mm, dy=8mm, dz=5mm

Reference Value = 24.29 V/m; Power Drift = -0.04 dB

Peak SAR (extrapolated) = 1.75 W/kg

SAR(1 g) = 0.642 W/kg; SAR(10 g) = 0.336 W/kg

Maximum value of SAR (measured) = 0.817 W/kg



0 dB = 0.817 W/kg = -0.88 dBW/kg

Test Laboratory: SGS-SAR Lab

V2247 LTE Band 12 10M QPSK 1RB0 23130CH Back side 15mm Ant13

DUT: V2247; Type: Mobile Phone; Serial: 863548060193558

Communication System: UID 0, LTE-FDD BW 10MHZ (0); Frequency: 711 MHz; Duty Cycle: 1:1

Medium: HSL750; Medium parameters used: $f = 711$ MHz; $\sigma = 0.878$ S/m; $\epsilon_r = 42.185$; $\rho = 1000$ kg/m³

Phantom section: Flat Section

DASY 5 Configuration:

- Probe: ES3DV3 - SN3137; ConvF(6.3, 6.3, 6.3); Calibrated: 2022/9/16
- Sensor-Surface: 3mm (Mechanical Surface Detection)
- Electronics: DAE4 Sn896; Calibrated: 2023/3/17
- Phantom: SAM 6; Type: SAM Twin; Serial: 1481
- DASY52 52.10.4(1527); SEMCAD X 14.6.14(7483)

Configuration/Body/Area Scan (8x13x1): Measurement grid: dx=15mm, dy=15mm

Maximum value of SAR (measured) = 0.184 W/kg

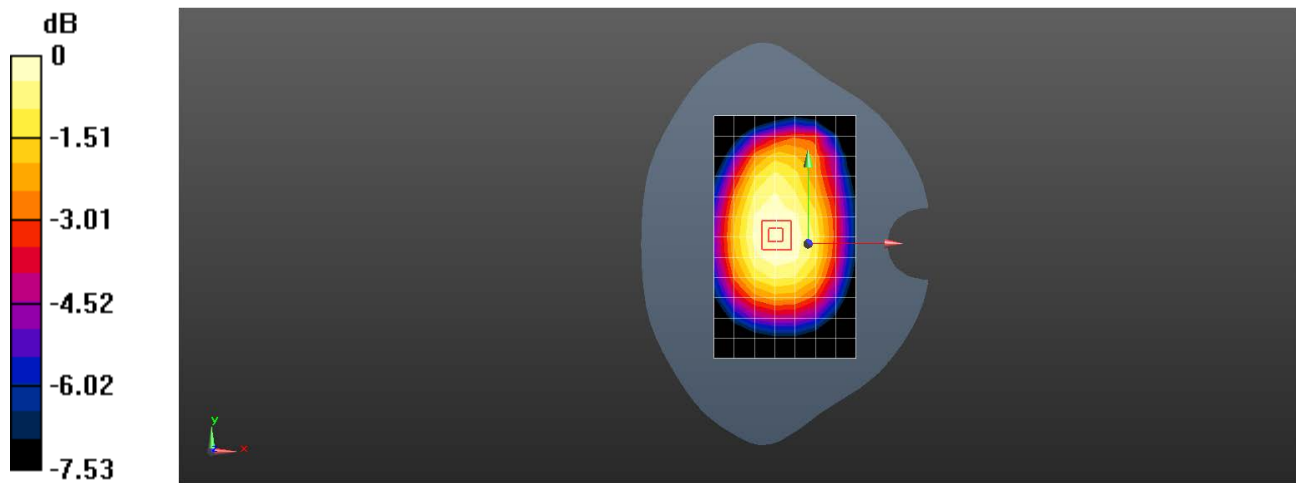
Configuration/Body/Zoom Scan (5x5x7)/Cube 0: Measurement grid: dx=8mm, dy=8mm, dz=5mm

Reference Value = 14.26 V/m; Power Drift = -0.15 dB

Peak SAR (extrapolated) = 0.211 W/kg

SAR(1 g) = 0.165 W/kg; SAR(10 g) = 0.126 W/kg

Maximum value of SAR (measured) = 0.182 W/kg



0 dB = 0.182 W/kg = -7.40 dBW/kg

Test Laboratory: SGS-SAR Lab

V2247 LTE Band 12 10M QPSK 1RB0 23130CH Left side 10mm Ant13

DUT: V2247; Type: Mobile Phone; Serial: 863548060193558

Communication System: UID 0, LTE-FDD BW 10MHZ (0); Frequency: 711 MHz; Duty Cycle: 1:1

Medium: HSL750; Medium parameters used: $f = 711$ MHz; $\sigma = 0.878$ S/m; $\epsilon_r = 42.185$; $\rho = 1000$ kg/m³

Phantom section: Flat Section

DASY 5 Configuration:

- Probe: ES3DV3 - SN3137; ConvF(6.3, 6.3, 6.3); Calibrated: 2022/9/16
- Sensor-Surface: 3mm (Mechanical Surface Detection)
- Electronics: DAE4 Sn896; Calibrated: 2023/3/17
- Phantom: SAM 6; Type: SAM Twin; Serial: 1481
- DASY52 52.10.4(1527); SEMCAD X 14.6.14(7483)

Configuration/Body/Area Scan (5x13x1): Measurement grid: dx=15mm, dy=15mm

Maximum value of SAR (measured) = 0.231 W/kg

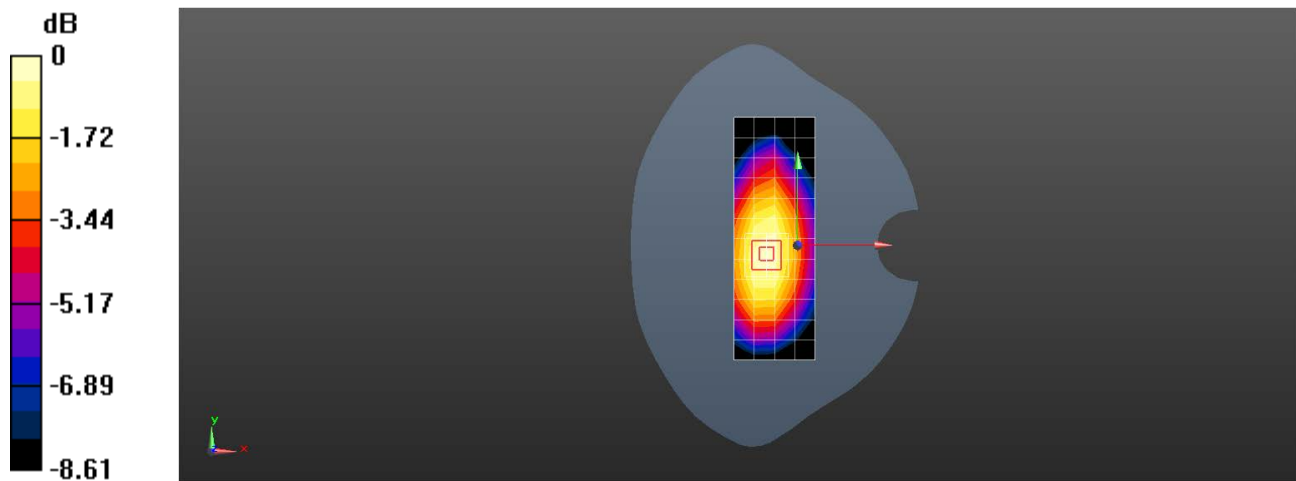
Configuration/Body/Zoom Scan (5x5x7)/Cube 0: Measurement grid: dx=8mm, dy=8mm, dz=5mm

Reference Value = 15.87 V/m; Power Drift = 0.00 dB

Peak SAR (extrapolated) = 0.304 W/kg

SAR(1 g) = 0.215 W/kg; SAR(10 g) = 0.152 W/kg

Maximum value of SAR (measured) = 0.246 W/kg



0 dB = 0.246 W/kg = -6.09 dBW/kg

Test Laboratory: SGS-SAR Lab

V2247 LTE Band 13 10M QPSK 25RB0 23230CH Right cheek Ant13

DUT: V2247; Type: Mobile Phone; Serial: 863548060193558

Communication System: UID 0, LTE-FDD BW 10MHZ (0); Frequency: 782 MHz;Duty Cycle: 1:1

Medium: HSL750;Medium parameters used: $f = 782$ MHz; $\sigma = 0.913$ S/m; $\epsilon_r = 41.386$; $\rho = 1000$ kg/m³

Phantom section: Right Section

DASY 5 Configuration:

- Probe: ES3DV3 - SN3137; ConvF(6.3, 6.3, 6.3); Calibrated: 2022/9/16
- Sensor-Surface: 3mm (Mechanical Surface Detection)
- Electronics: DAE4 Sn896; Calibrated: 2023/3/17
- Phantom: SAM 6; Type: SAM Twin; Serial: 1481
- DASY52 52.10.4(1527); SEMCAD X 14.6.14(7483)

Configuration/Head/Area Scan (8x14x1): Measurement grid: dx=15mm, dy=15mm

Maximum value of SAR (measured) = 0.776 W/kg

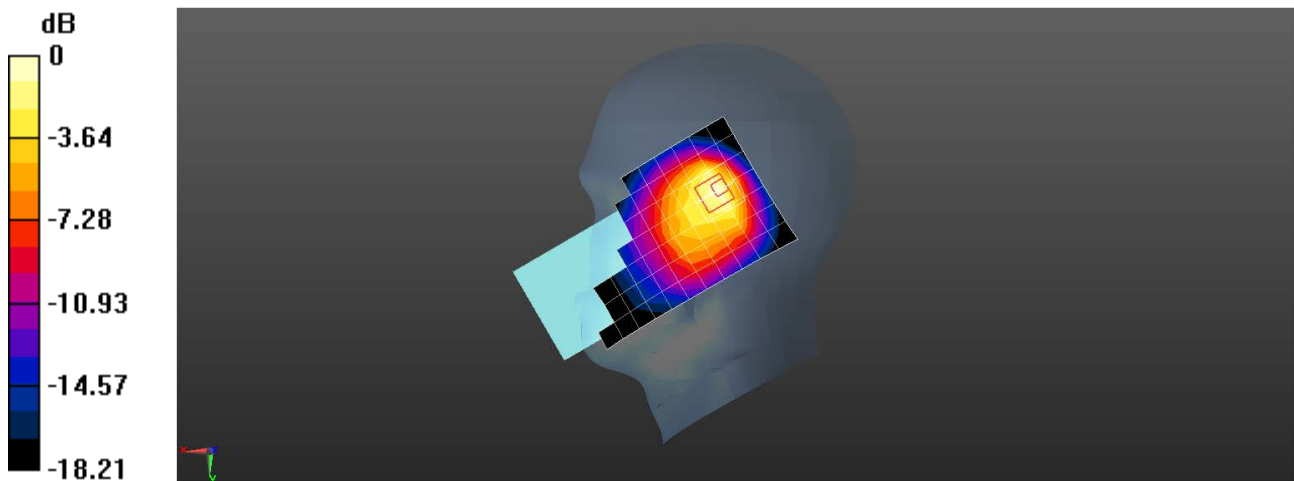
Configuration/Head/Zoom Scan (5x5x7)/Cube 0: Measurement grid: dx=8mm, dy=8mm, dz=5mm

Reference Value = 23.00 V/m; Power Drift = -0.03 dB

Peak SAR (extrapolated) = 1.59 W/kg

SAR(1 g) = 0.605 W/kg; SAR(10 g) = 0.321 W/kg

Maximum value of SAR (measured) = 0.754 W/kg



0 dB = 0.754 W/kg = -1.23 dBW/kg

Test Laboratory: SGS-SAR Lab

V2247 LTE Band 13 10M QPSK 1RB0 23230CH Back side 15mm Ant13

DUT: V2247; Type: Mobile Phone; Serial: 863548060193558

Communication System: UID 0, LTE-FDD BW 10MHZ (0); Frequency: 782 MHz; Duty Cycle: 1:1

Medium: HSL750; Medium parameters used: $f = 782$ MHz; $\sigma = 0.913$ S/m; $\epsilon_r = 41.386$; $\rho = 1000$ kg/m³

Phantom section: Flat Section

DASY 5 Configuration:

- Probe: ES3DV3 - SN3137; ConvF(6.3, 6.3, 6.3); Calibrated: 2022/9/16
- Sensor-Surface: 3mm (Mechanical Surface Detection)
- Electronics: DAE4 Sn896; Calibrated: 2023/3/17
- Phantom: SAM 6; Type: SAM Twin; Serial: 1481
- DASY52 52.10.4(1527); SEMCAD X 14.6.14(7483)

Configuration/Body/Area Scan (8x13x1): Measurement grid: dx=15mm, dy=15mm

Maximum value of SAR (measured) = 0.158 W/kg

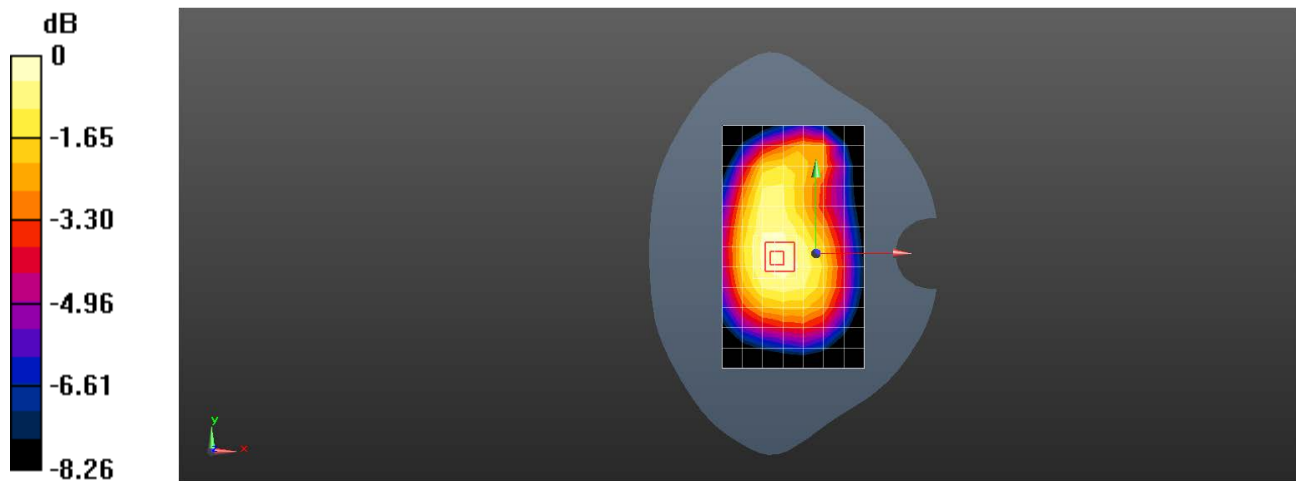
Configuration/Body/Zoom Scan (5x5x7)/Cube 0: Measurement grid: dx=8mm, dy=8mm, dz=5mm

Reference Value = 12.70 V/m; Power Drift = 0.01 dB

Peak SAR (extrapolated) = 0.195 W/kg

SAR(1 g) = 0.151 W/kg; SAR(10 g) = 0.115 W/kg

Maximum value of SAR (measured) = 0.167 W/kg



0 dB = 0.167 W/kg = -7.77 dBW/kg

Test Laboratory: SGS-SAR Lab

V2247 LTE Band 13 10M QPSK 1RB0 23230CH Back side 10mm Ant13

DUT: V2247; Type: Mobile Phone; Serial: 863548060193558

Communication System: UID 0, LTE-FDD BW 10MHZ (0); Frequency: 782 MHz; Duty Cycle: 1:1

Medium: HSL750; Medium parameters used: $f = 782$ MHz; $\sigma = 0.913$ S/m; $\epsilon_r = 41.386$; $\rho = 1000$ kg/m³

Phantom section: Flat Section

DASY 5 Configuration:

- Probe: ES3DV3 - SN3137; ConvF(6.3, 6.3, 6.3); Calibrated: 2022/9/16
- Sensor-Surface: 3mm (Mechanical Surface Detection)
- Electronics: DAE4 Sn896; Calibrated: 2023/3/17
- Phantom: SAM 6; Type: SAM Twin; Serial: 1481
- DASY52 52.10.4(1527); SEMCAD X 14.6.14(7483)

Configuration/Body/Area Scan (8x13x1): Measurement grid: dx=15mm, dy=15mm

Maximum value of SAR (measured) = 0.239 W/kg

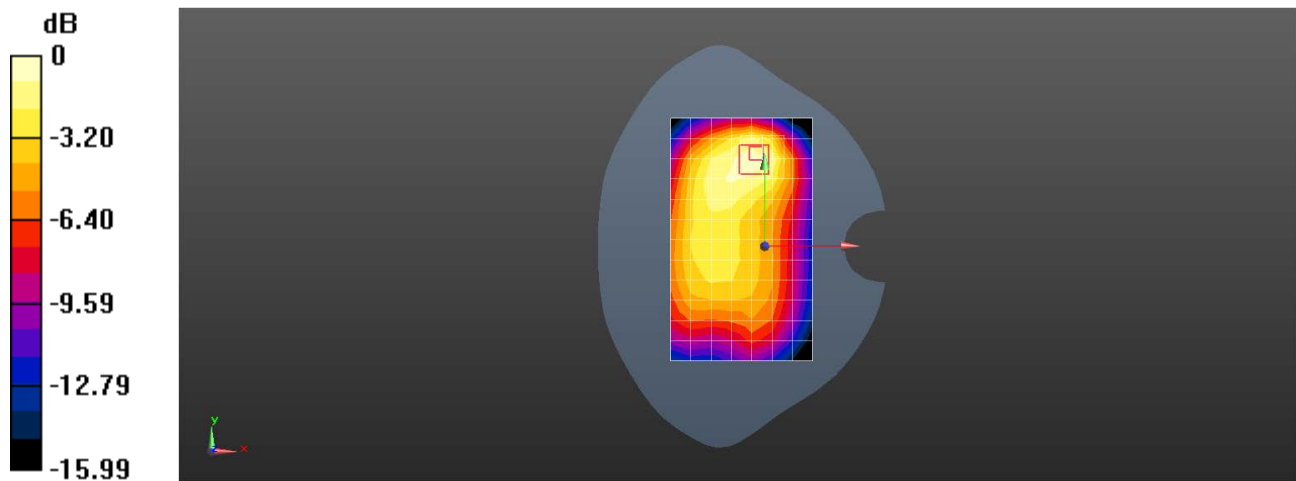
Configuration/Body/Zoom Scan (5x5x7)/Cube 0: Measurement grid: dx=8mm, dy=8mm, dz=5mm

Reference Value = 11.32 V/m; Power Drift = 0.04 dB

Peak SAR (extrapolated) = 0.412 W/kg

SAR(1 g) = 0.219 W/kg; SAR(10 g) = 0.131 W/kg

Maximum value of SAR (measured) = 0.252 W/kg



0 dB = 0.252 W/kg = -5.99 dBW/kg

Test Laboratory: SGS-SAR Lab

V2247 LTE Band 26 15M QPSK 1RB74 26765CH Right cheek Ant13

DUT: V2247; Type: Mobile Phone; Serial: 863548060193558

Communication System: UID 0, LTE-FDD BW 15MHz (0); Frequency: 821.5 MHz;Duty Cycle: 1:1

Medium: HSL835;Medium parameters used: $f = 821.5$ MHz; $\sigma = 0.895$ S/m; $\epsilon_r = 42.917$; $\rho = 1000$ kg/m³

Phantom section: Right Section

DASY 5 Configuration:

- Probe: ES3DV3 - SN3137; ConvF(6.09, 6.09, 6.09); Calibrated: 2022/9/16
- Sensor-Surface: 3mm (Mechanical Surface Detection)
- Electronics: DAE4 Sn896; Calibrated: 2023/3/17
- Phantom: SAM 6; Type: SAM Twin; Serial: 1481
- DASY52 52.10.4(1527); SEMCAD X 14.6.14(7483)

Configuration/Head/Area Scan (8x14x1): Measurement grid: dx=15mm, dy=15mm

Maximum value of SAR (measured) = 0.787 W/kg

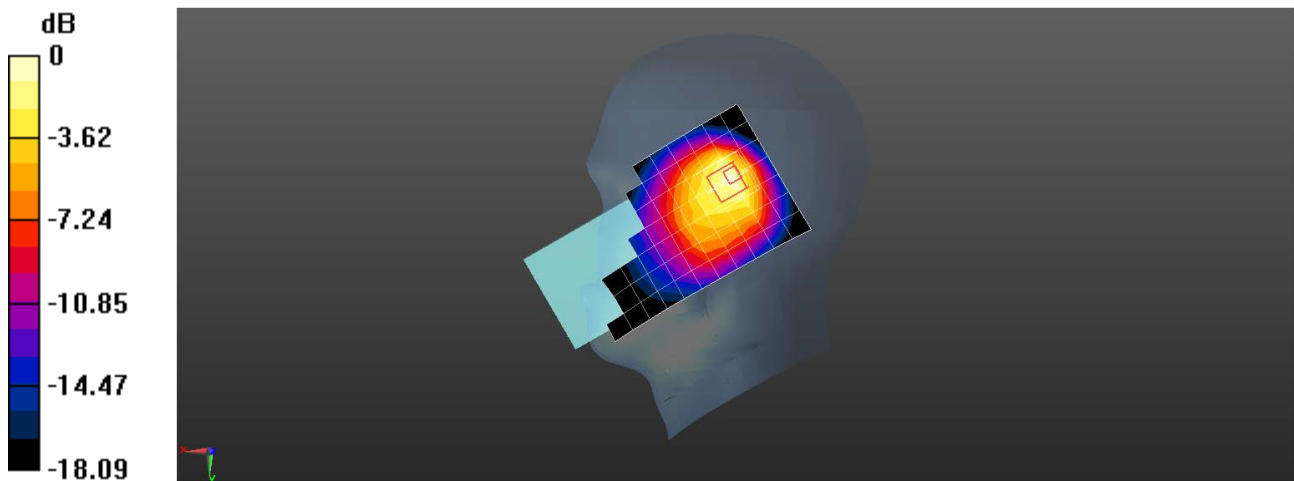
Configuration/Head/Zoom Scan (5x5x7)/Cube 0: Measurement grid: dx=8mm, dy=8mm, dz=5mm

Reference Value = 23.78 V/m; Power Drift = -0.14 dB

Peak SAR (extrapolated) = 1.61 W/kg

SAR(1 g) = 0.625 W/kg; SAR(10 g) = 0.337 W/kg

Maximum value of SAR (measured) = 0.778 W/kg



0 dB = 0.778 W/kg = -1.09 dBW/kg

Test Laboratory: SGS-SAR Lab

V2247 LTE Band 26 15M QPSK 1RB0 26865CH Back side 15mm Ant13

DUT: V2247; Type: Mobile Phone; Serial: 863548060193558

Communication System: UID 0, LTE-FDD BW 15MHz (0); Frequency: 831.5 MHz;Duty Cycle: 1:1

Medium: HSL835;Medium parameters used: $f = 831.5$ MHz; $\sigma = 0.903$ S/m; $\epsilon_r = 42.725$; $\rho = 1000$ kg/m³

Phantom section: Flat Section

DASY 5 Configuration:

- Probe: ES3DV3 - SN3137; ConvF(6.09, 6.09, 6.09); Calibrated: 2022/9/16
- Sensor-Surface: 3mm (Mechanical Surface Detection)
- Electronics: DAE4 Sn896; Calibrated: 2023/3/17
- Phantom: SAM 6; Type: SAM Twin; Serial: 1481
- DASY52 52.10.4(1527); SEMCAD X 14.6.14(7483)

Configuration/Body/Area Scan (8x13x1): Measurement grid: dx=15mm, dy=15mm

Maximum value of SAR (measured) = 0.172 W/kg

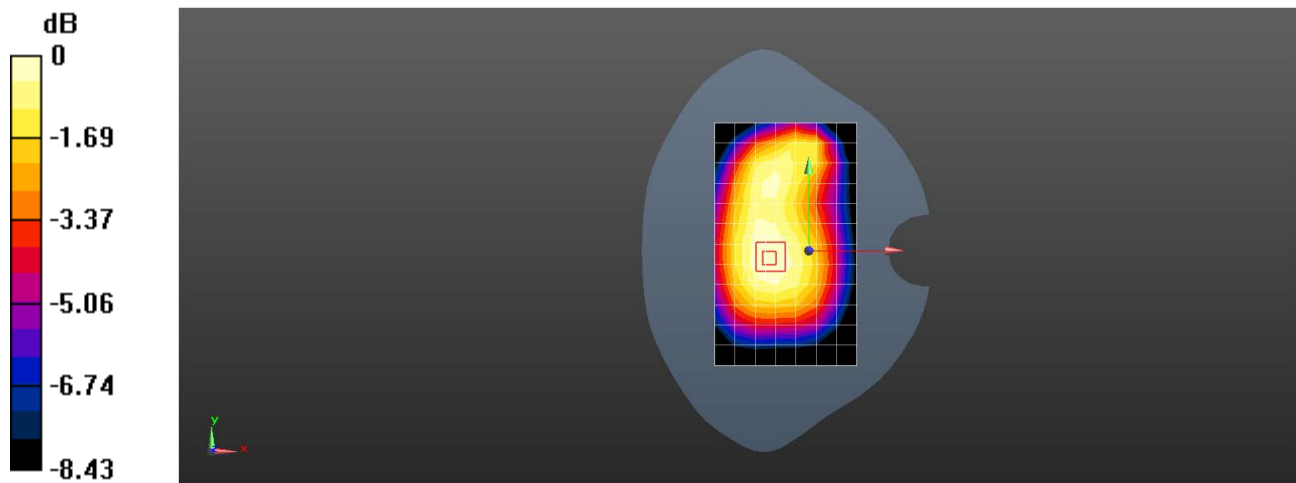
Configuration/Body/Zoom Scan (5x5x7)/Cube 0: Measurement grid: dx=8mm, dy=8mm, dz=5mm

Reference Value = 13.19 V/m; Power Drift = 0.09 dB

Peak SAR (extrapolated) = 0.204 W/kg

SAR(1 g) = 0.159 W/kg; SAR(10 g) = 0.120 W/kg

Maximum value of SAR (measured) = 0.175 W/kg



0 dB = 0.175 W/kg = -7.57 dBW/kg

Test Laboratory: SGS-SAR Lab

V2247 LTE Band 26 15M QPSK 1RB0 26865CH Back side 10mm Ant13

DUT: V2247; Type: Mobile Phone; Serial: 863548060193558

Communication System: UID 0, LTE-FDD BW 15MHz (0); Frequency: 831.5 MHz;Duty Cycle: 1:1

Medium: HSL835;Medium parameters used: $f = 831.5$ MHz; $\sigma = 0.903$ S/m; $\epsilon_r = 42.725$; $\rho = 1000$ kg/m³

Phantom section: Flat Section

DASY 5 Configuration:

- Probe: ES3DV3 - SN3137; ConvF(6.09, 6.09, 6.09); Calibrated: 2022/9/16
- Sensor-Surface: 3mm (Mechanical Surface Detection)
- Electronics: DAE4 Sn896; Calibrated: 2023/3/17
- Phantom: SAM 6; Type: SAM Twin; Serial: 1481
- DASY52 52.10.4(1527); SEMCAD X 14.6.14(7483)

Configuration/Body/Area Scan (8x13x1): Measurement grid: dx=15mm, dy=15mm

Maximum value of SAR (measured) = 0.343 W/kg

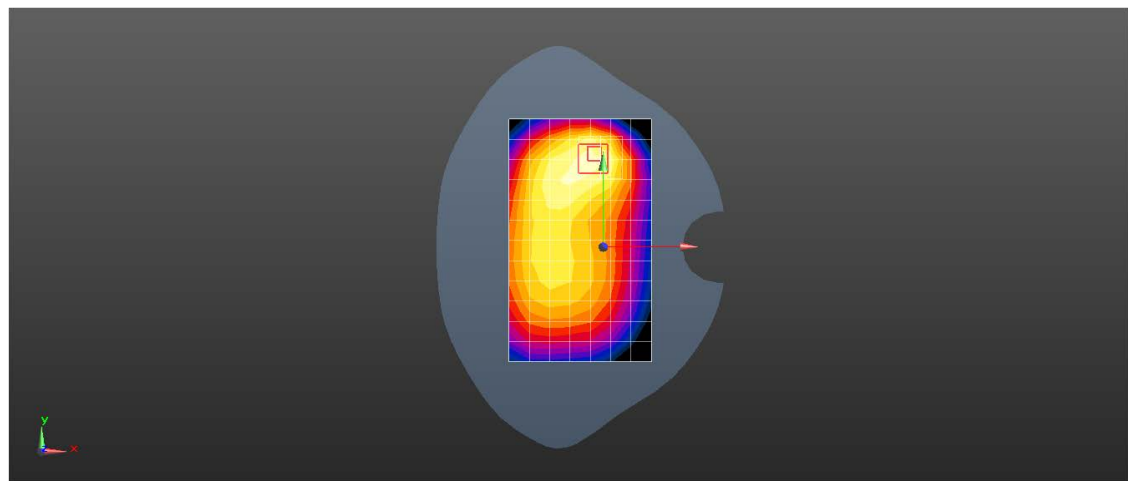
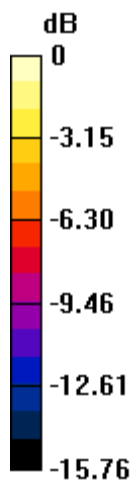
Configuration/Body/Zoom Scan (5x5x7)/Cube 0: Measurement grid: dx=8mm, dy=8mm, dz=5mm

Reference Value = 13.27 V/m; Power Drift = 0.04 dB

Peak SAR (extrapolated) = 0.581 W/kg

SAR(1 g) = 0.317 W/kg; SAR(10 g) = 0.189 W/kg

Maximum value of SAR (measured) = 0.369 W/kg



0 dB = 0.369 W/kg = -4.33 dBW/kg

Test Laboratory: SGS-SAR Lab

V2247 LTE Band 38 20M QPSK 1RB99 38000CH Right cheek Ant31

DUT: V2247; Type: Mobile Phone; Serial: 863548060193491

Communication System: UID 0, LTE-TDD BW 20MHz (0); Frequency: 2595 MHz;Duty Cycle: 1:1.58016

Medium: HSL2600;Medium parameters used: $f = 2595$ MHz; $\sigma = 1.946$ S/m; $\epsilon_r = 40.102$; $\rho = 1000$ kg/m³

Phantom section: Right Section

DASY 5 Configuration:

- Probe: EX3DV4 - SN7620; ConvF(8, 8, 8); Calibrated: 2022/11/20
- Sensor-Surface: 1.4mm (Mechanical Surface Detection)
- Electronics: DAE4 Sn1267; Calibrated: 2022/12/10
- Phantom: SAM 2; Type: SAM Twin; Serial: 1640
- DASY52 52.10.4(1527); SEMCAD X 14.6.14(7483)

Configuration/Head/Area Scan (10x16x1): Measurement grid: dx=12mm, dy=12mm

Maximum value of SAR (measured) = 0.255 W/kg

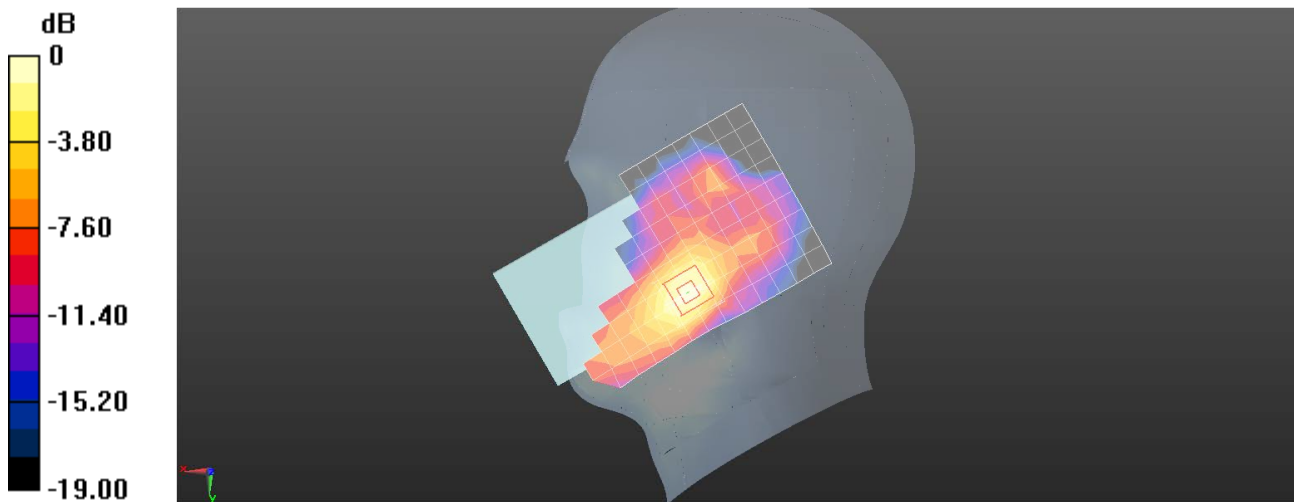
Configuration/Head/Zoom Scan (7x7x7)/Cube 0: Measurement grid: dx=5mm, dy=5mm, dz=5mm

Reference Value = 3.572 V/m; Power Drift = 0.07 dB

Peak SAR (extrapolated) = 0.361 W/kg

SAR(1 g) = 0.206 W/kg; SAR(10 g) = 0.111 W/kg

Maximum value of SAR (measured) = 0.256 W/kg



0 dB = 0.256 W/kg = -5.92 dBW/kg

Test Laboratory: SGS-SAR Lab

V2247 LTE Band 38 20M QPSK 50RB25 37850CH Back side 15mm Ant13

DUT: V2247; Type: Mobile Phone; Serial: 863548060193590

Communication System: UID 0, LTE-TDD BW 20MHz (0); Frequency: 2580 MHz;Duty Cycle: 1:1.58016

Medium: HSL2600;Medium parameters used: $f = 2580$ MHz; $\sigma = 1.929$ S/m; $\epsilon_r = 40.147$; $\rho = 1000$ kg/m³

Phantom section: Flat Section

DASY 5 Configuration:

- Probe: EX3DV4 - SN7620; ConvF(8, 8, 8); Calibrated: 2022/11/20
- Sensor-Surface: 1.4mm (Mechanical Surface Detection)
- Electronics: DAE4 Sn1267; Calibrated: 2022/12/10
- Phantom: SAM 2; Type: SAM Twin; Serial: 1640
- DASY52 52.10.4(1527); SEMCAD X 14.6.14(7483)

Configuration/Body/Area Scan (10x16x1): Measurement grid: dx=12mm, dy=12mm

Maximum value of SAR (measured) = 0.491 W/kg

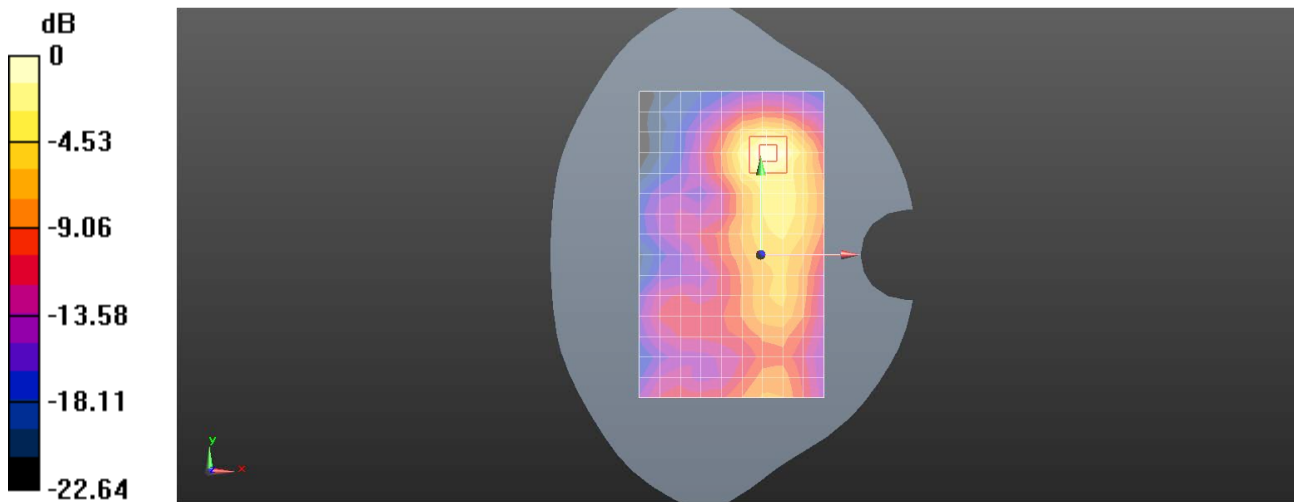
Configuration/Body/Zoom Scan (7x7x7)/Cube 0: Measurement grid: dx=5mm, dy=5mm, dz=5mm

Reference Value = 4.681 V/m; Power Drift = -0.05 dB

Peak SAR (extrapolated) = 0.648 W/kg

SAR(1 g) = 0.300 W/kg; SAR(10 g) = 0.140 W/kg

Maximum value of SAR (measured) = 0.507 W/kg



0 dB = 0.507 W/kg = -2.95 dBW/kg

Test Laboratory: SGS-SAR Lab

V2247 LTE Band 38 20M QPSK 50RB50 37850CH Top side 10mm Ant13

DUT: V2247; Type: Mobile Phone; Serial: 863548060193590

Communication System: UID 0, LTE-TDD BW 20MHz (0); Frequency: 2580 MHz;Duty Cycle: 1:1.58016

Medium: HSL2600;Medium parameters used: $f = 2580$ MHz; $\sigma = 1.929$ S/m; $\epsilon_r = 40.147$; $\rho = 1000$ kg/m³

Phantom section: Flat Section

DASY 5 Configuration:

- Probe: EX3DV4 - SN7620; ConvF(8, 8, 8); Calibrated: 2022/11/20
- Sensor-Surface: 1.4mm (Mechanical Surface Detection)
- Electronics: DAE4 Sn1267; Calibrated: 2022/12/10
- Phantom: SAM 2; Type: SAM Twin; Serial: 1640
- DASY52 52.10.4(1527); SEMCAD X 14.6.14(7483)

Configuration/Body/Area Scan (6x11x1): Measurement grid: dx=12mm, dy=12mm

Maximum value of SAR (measured) = 0.677 W/kg

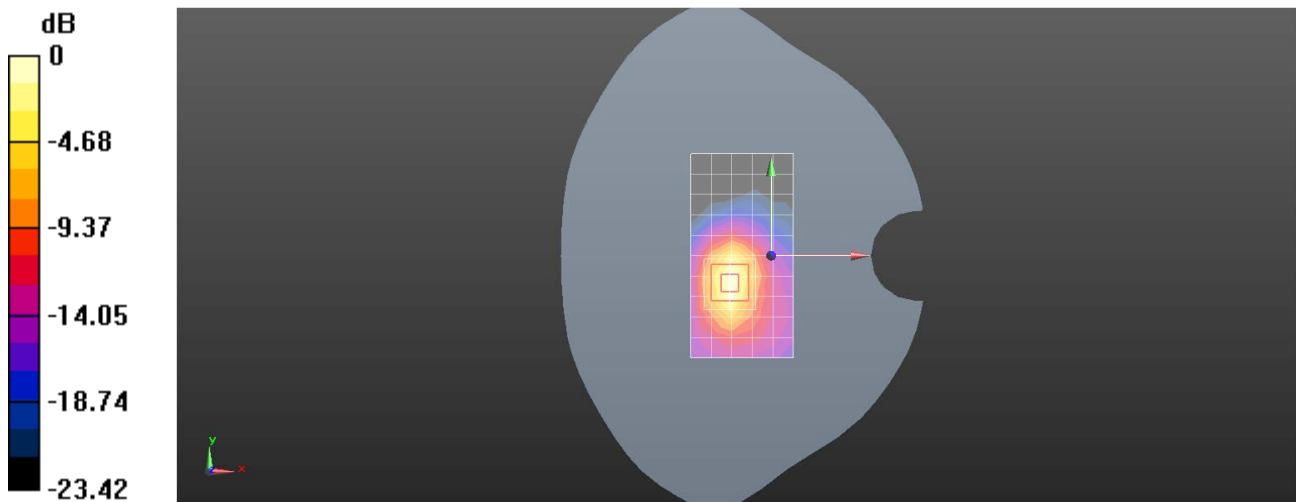
Configuration/Body/Zoom Scan (7x7x7)/Cube 0: Measurement grid: dx=5mm, dy=5mm, dz=5mm

Reference Value = 8.740 V/m; Power Drift = 0.08 dB

Peak SAR (extrapolated) = 0.922 W/kg

SAR(1 g) = 0.412 W/kg; SAR(10 g) = 0.178 W/kg

Maximum value of SAR (measured) = 0.720 W/kg



Test Laboratory: SGS-SAR Lab

V2247 LTE Band 41 20M QPSK 1RB0 40620CH Right cheek Ant31

DUT: V2247; Type: Mobile Phone; Serial: 863548060193590

Communication System: UID 0, LTE-TDD BW 20MHz (0); Frequency: 2593 MHz;Duty Cycle: 1:1.58

Medium: HSL2600;Medium parameters used: $f = 2593$ MHz; $\sigma = 2.041$ S/m; $\epsilon_r = 37.632$; $\rho = 1000$ kg/m³

Phantom section: Right Section

DASY 5 Configuration:

- Probe: EX3DV4 - SN7620; ConvF(8, 8, 8); Calibrated: 2022/11/20
- Sensor-Surface: 1.4mm (Mechanical Surface Detection)
- Electronics: DAE4 Sn1267; Calibrated: 2022/12/10
- Phantom: SAM 2; Type: SAM Twin; Serial: 1640
- DASY52 52.10.4(1527); SEMCAD X 14.6.14(7483)

Configuration/Head/Area Scan (10x16x1): Measurement grid: dx=12mm, dy=12mm

Maximum value of SAR (measured) = 0.274 W/kg

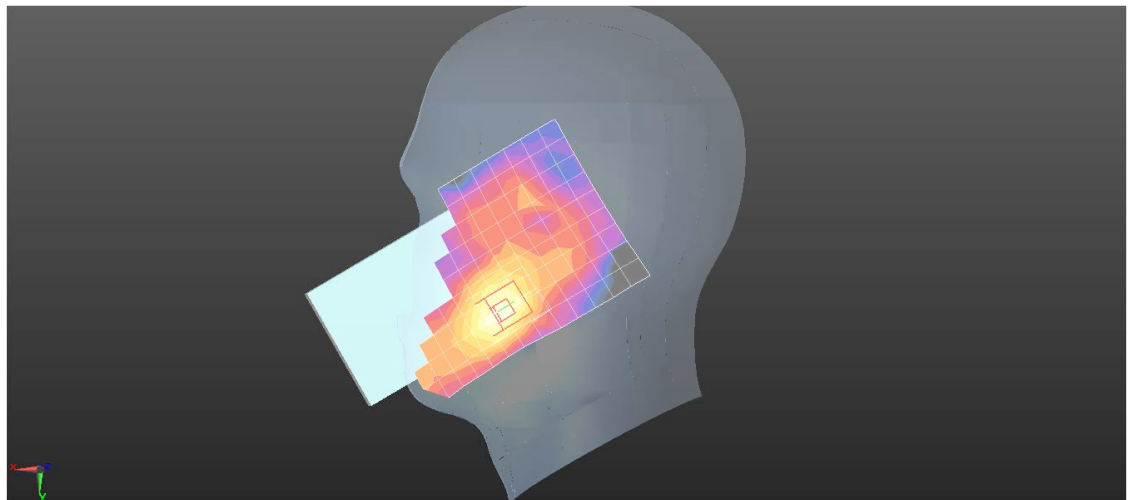
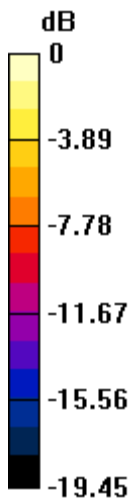
Configuration/Head/Zoom Scan (7x7x7)/Cube 0: Measurement grid: dx=5mm, dy=5mm, dz=5mm

Reference Value = 3.375 V/m; Power Drift = -0.08 dB

Peak SAR (extrapolated) = 0.414 W/kg

SAR(1 g) = 0.213 W/kg; SAR(10 g) = 0.109 W/kg

Maximum value of SAR (measured) = 0.266 W/kg



0 dB = 0.266 W/kg = -5.75 dBW/kg

Test Laboratory: SGS-SAR Lab

V2247 LTE Band 41 20M QPSK 1RB50 40620CH Back side 15mm Ant13

DUT: V2247; Type: Mobile Phone; Serial: 863548060193590

Communication System: UID 0, LTE-TDD BW 20MHz (0); Frequency: 2593 MHz; Duty Cycle: 1:1.58

Medium: HSL2600; Medium parameters used: $f = 2593$ MHz; $\sigma = 2.041$ S/m; $\epsilon_r = 37.632$; $\rho = 1000$ kg/m³

Phantom section: Flat Section

DASY 5 Configuration:

- Probe: EX3DV4 - SN7620; ConvF(8, 8, 8); Calibrated: 2022/11/20
- Sensor-Surface: 1.4mm (Mechanical Surface Detection)
- Electronics: DAE4 Sn1267; Calibrated: 2022/12/10
- Phantom: SAM 2; Type: SAM Twin; Serial: 1640
- DASY52 52.10.4(1527); SEMCAD X 14.6.14(7483)

Configuration/Body/Area Scan (10x16x1): Measurement grid: dx=12mm, dy=12mm

Maximum value of SAR (measured) = 0.633 W/kg

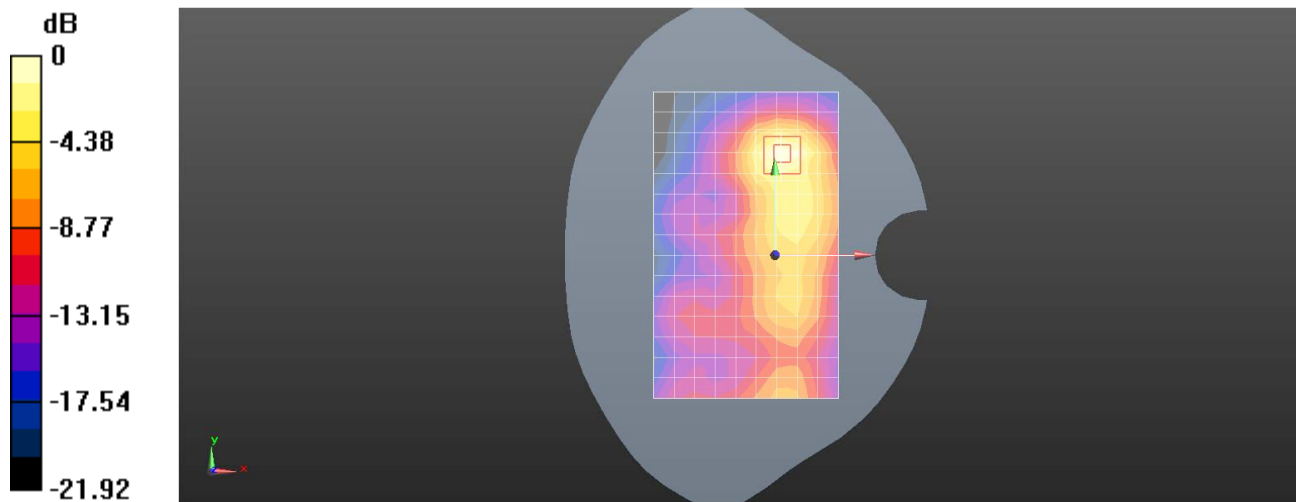
Configuration/Body/Zoom Scan (7x7x7)/Cube 0: Measurement grid: dx=5mm, dy=5mm, dz=5mm

Reference Value = 5.412 V/m; Power Drift = -0.04 dB

Peak SAR (extrapolated) = 0.853 W/kg

SAR(1 g) = 0.392 W/kg; SAR(10 g) = 0.183 W/kg

Maximum value of SAR (measured) = 0.663 W/kg



0 dB = 0.663 W/kg = -1.78 dBW/kg

Test Laboratory: SGS-SAR Lab

V2247 LTE Band 41 20M QPSK 1RB50 40620CH Top side 10mm Ant13

DUT: V2247; Type: Mobile Phone; Serial: 863548060193590

Communication System: UID 0, LTE-TDD BW 20MHz (0); Frequency: 2593 MHz; Duty Cycle: 1:1.58

Medium: HSL2600; Medium parameters used: $f = 2593$ MHz; $\sigma = 2.041$ S/m; $\epsilon_r = 37.632$; $\rho = 1000$ kg/m³

Phantom section: Flat Section

DASY 5 Configuration:

- Probe: EX3DV4 - SN7620; ConvF(8, 8, 8); Calibrated: 2022/11/20
- Sensor-Surface: 1.4mm (Mechanical Surface Detection)
- Electronics: DAE4 Sn1267; Calibrated: 2022/12/10
- Phantom: SAM 2; Type: SAM Twin; Serial: 1640
- DASY52 52.10.4(1527); SEMCAD X 14.6.14(7483)

Configuration/Body/Area Scan (6x11x1): Measurement grid: dx=12mm, dy=12mm

Maximum value of SAR (measured) = 0.743 W/kg

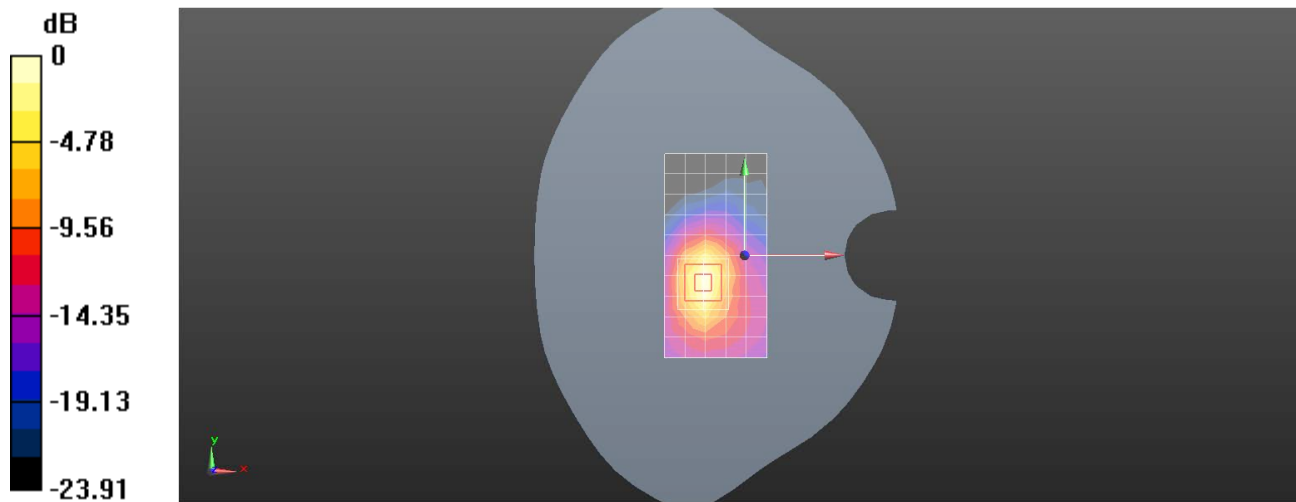
Configuration/Body/Zoom Scan (7x7x7)/Cube 0: Measurement grid: dx=5mm, dy=5mm, dz=5mm

Reference Value = 8.908 V/m; Power Drift = 0.03 dB

Peak SAR (extrapolated) = 1.02 W/kg

SAR(1 g) = 0.455 W/kg; SAR(10 g) = 0.196 W/kg

Maximum value of SAR (measured) = 0.799 W/kg



0 dB = 0.799 W/kg = -0.97 dBW/kg

Test Laboratory: SGS-SAR Lab

V2247 LTE Band 66 20M QPSK 1RB99 132322CH Left cheek Ant31

DUT: V2247; Type: Mobile Phone; Serial: 863548060193491

Communication System: UID 0, LTE-FDD BW 20MHz (0); Frequency: 1745 MHz; Duty Cycle: 1:1

Medium: HSL1750; Medium parameters used: $f = 1745$ MHz; $\sigma = 1.343$ S/m; $\epsilon_r = 40.31$; $\rho = 1000$ kg/m³
Phantom section: Left Section

DASY 5 Configuration:

- Probe: EX3DV4 - SN3789; ConvF(7.65, 7.65, 7.65); Calibrated: 2022/9/30
- Sensor-Surface: 1.4mm (Mechanical Surface Detection)
- Electronics: DAE4 Sn702; Calibrated: 2022/11/9
- Phantom: SAM 4; Type: SAM; Serial: 1913
- DASY52 52.10.4(1527); SEMCAD X 14.6.14(7483)

Configuration/Head/Area Scan (8x13x1): Measurement grid: dx=15mm, dy=15mm

Maximum value of SAR (measured) = 0.0876 W/kg

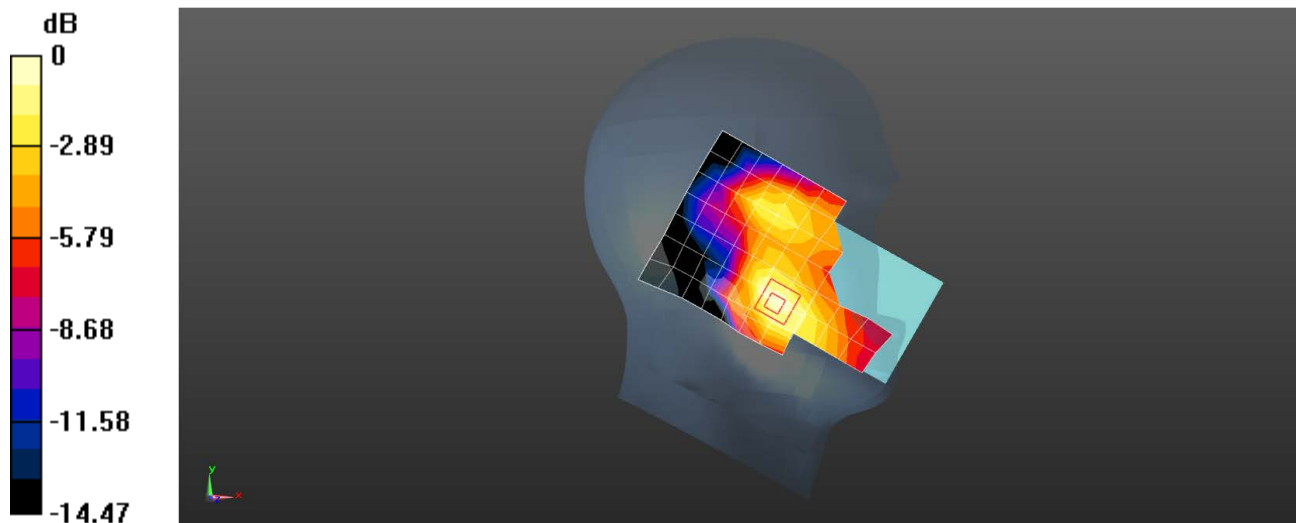
Configuration/Head/Zoom Scan (5x5x7)/Cube 0: Measurement grid: dx=8mm, dy=8mm, dz=5mm

Reference Value = 2.738 V/m; Power Drift = 0.06 dB

Peak SAR (extrapolated) = 0.112 W/kg

SAR(1 g) = 0.073 W/kg; SAR(10 g) = 0.046 W/kg

Maximum value of SAR (measured) = 0.0955 W/kg



0 dB = 0.0955 W/kg = -10.20 dBW/kg

Test Laboratory: SGS-SAR Lab

V2247 LTE Band 66 20M QPSK 1RB99 132572CH Back side 15mm Ant13

DUT: V2247; Type: Mobile Phone; Serial: 863548060193491

Communication System: UID 0, LTE-FDD BW 20MHz (0); Frequency: 1770 MHz;Duty Cycle: 1:1

Medium: HSL1750;Medium parameters used: $f = 1770$ MHz; $\sigma = 1.355$ S/m; $\epsilon_r = 40.298$; $\rho = 1000$ kg/m³

Phantom section: Flat Section

DASY 5 Configuration:

- Probe: EX3DV4 - SN3789; ConvF(7.65, 7.65, 7.65); Calibrated: 2022/9/30
- Sensor-Surface: 1.4mm (Mechanical Surface Detection)
- Electronics: DAE4 Sn702; Calibrated: 2022/11/9
- Phantom: SAM 4; Type: SAM; Serial: 1913
- DASY52 52.10.4(1527); SEMCAD X 14.6.14(7483)

Configuration/Body/Area Scan (8x13x1): Measurement grid: dx=15mm, dy=15mm

Maximum value of SAR (measured) = 0.512 W/kg

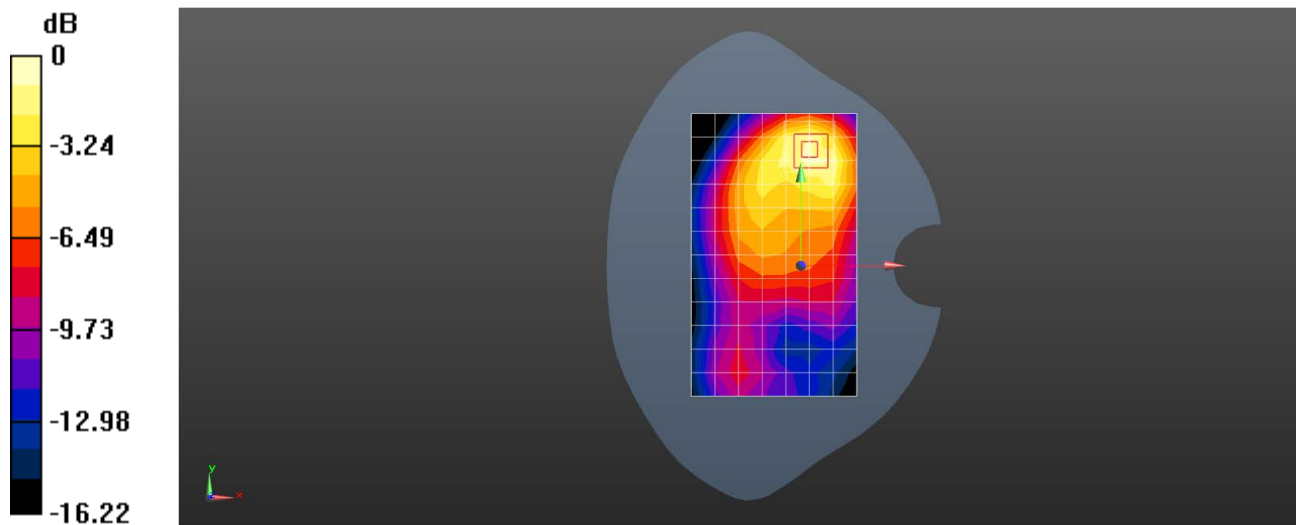
Configuration/Body/Zoom Scan (5x5x7)/Cube 0: Measurement grid: dx=8mm, dy=8mm, dz=5mm

Reference Value = 9.529 V/m; Power Drift = -0.01 dB

Peak SAR (extrapolated) = 0.705 W/kg

SAR(1 g) = 0.418 W/kg; SAR(10 g) = 0.244 W/kg

Maximum value of SAR (measured) = 0.595 W/kg



0 dB = 0.595 W/kg = -2.25 dBW/kg

Test Laboratory: SGS-SAR Lab

V2247 LTE Band 66 20M QPSK 1RB99 132572CH Top side 10mm Ant13

DUT: V2247; Type: Mobile Phone; Serial: 863548060193491

Communication System: UID 0, LTE-FDD BW 20MHz (0); Frequency: 1770 MHz; Duty Cycle: 1:1

Medium: HSL1750; Medium parameters used: $f = 1770$ MHz; $\sigma = 1.355$ S/m; $\epsilon_r = 40.298$; $\rho = 1000$ kg/m³

Phantom section: Flat Section

DASY 5 Configuration:

- Probe: EX3DV4 - SN3789; ConvF(7.65, 7.65, 7.65); Calibrated: 2022/9/30
- Sensor-Surface: 1.4mm (Mechanical Surface Detection)
- Electronics: DAE4 Sn702; Calibrated: 2022/11/9
- Phantom: SAM 4; Type: SAM; Serial: 1913
- DASY52 52.10.4(1527); SEMCAD X 14.6.14(7483)

Configuration/Body/Area Scan (5x9x1): Measurement grid: dx=15mm, dy=15mm

Maximum value of SAR (measured) = 0.668 W/kg

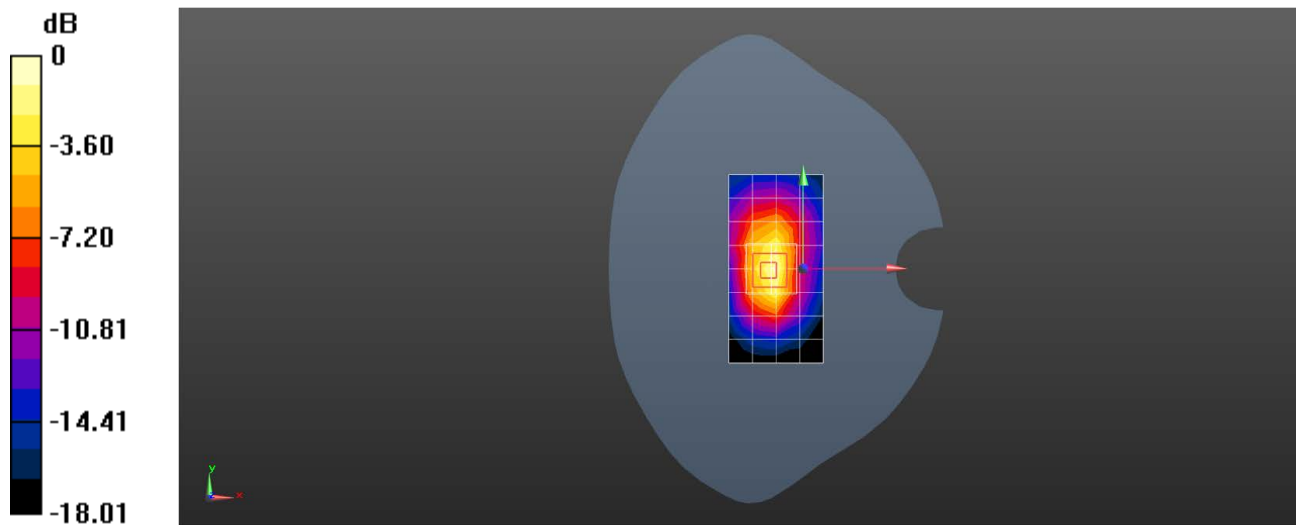
Configuration/Body/Zoom Scan (5x5x7)/Cube 0: Measurement grid: dx=8mm, dy=8mm, dz=5mm

Reference Value = 19.23 V/m; Power Drift = 0.02 dB

Peak SAR (extrapolated) = 0.932 W/kg

SAR(1 g) = 0.509 W/kg; SAR(10 g) = 0.262 W/kg

Maximum value of SAR (measured) = 0.776 W/kg



0 dB = 0.776 W/kg = -1.10 dBW/kg

Test Laboratory: SGS-SAR Lab

V2247 LTE Band 66 20M QPSK 1RB99 132572CH Top side 0mm Ant13

DUT: V2247; Type: Mobile Phone; Serial: 863548060193491

Communication System: UID 0, LTE-FDD BW 20MHz (0); Frequency: 1770 MHz;Duty Cycle: 1:1

Medium: HSL1750;Medium parameters used: $f = 1770$ MHz; $\sigma = 1.355$ S/m; $\epsilon_r = 40.298$; $\rho = 1000$ kg/m³

Phantom section: Flat Section

DASY 5 Configuration:

- Probe: EX3DV4 - SN3789; ConvF(7.65, 7.65, 7.65); Calibrated: 2022/9/30
- Sensor-Surface: 1.4mm (Mechanical Surface Detection)
- Electronics: DAE4 Sn702; Calibrated: 2022/11/9
- Phantom: SAM 4; Type: SAM; Serial: 1913
- DASY52 52.10.4(1527); SEMCAD X 14.6.14(7483)

Configuration/Body/Area Scan (5x9x1): Measurement grid: dx=15mm, dy=15mm

Maximum value of SAR (measured) = 11.6 W/kg

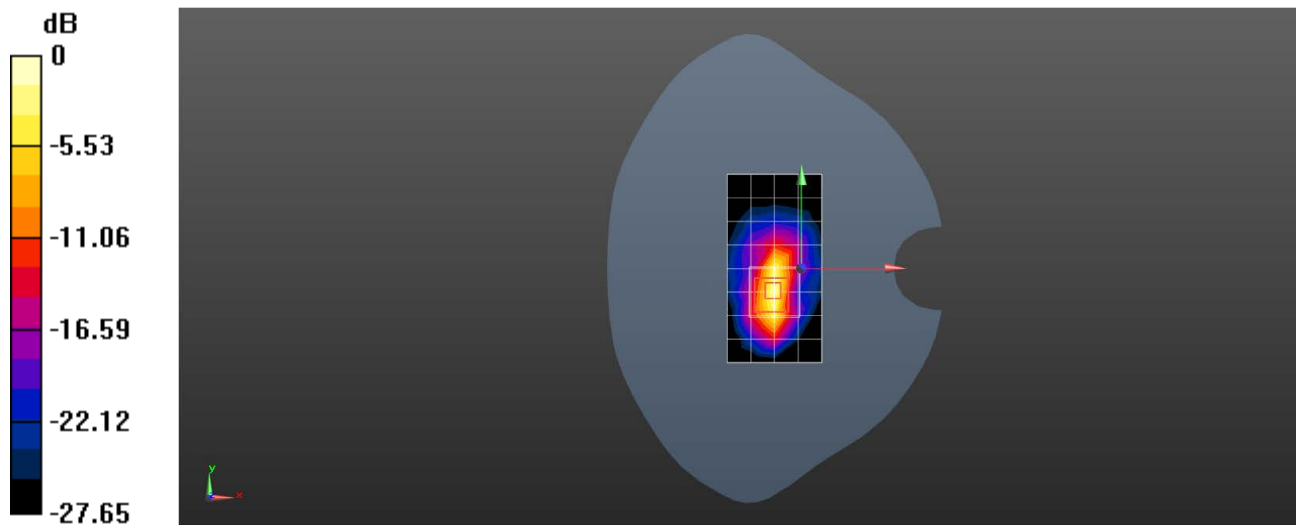
Configuration/Body/Zoom Scan (5x5x7)/Cube 0: Measurement grid: dx=8mm, dy=8mm, dz=5mm

Reference Value = 46.98 V/m; Power Drift = -0.06 dB

Peak SAR (extrapolated) = 16.6 W/kg

SAR(1 g) = 4.97 W/kg; SAR(10 g) = 1.92 W/kg

Maximum value of SAR (measured) = 13.7 W/kg



0 dB = 13.7 W/kg = 11.37 dBW/kg

Test Laboratory: SGS-SAR Lab

V2247 WIFI 2.4G 802.11b 6CH Left cheek Ant22

DUT: V2247; Type: Mobile Phone; Serial: 863548060193590

Communication System: UID 0, WI-FI(2.4GHz) (0); Frequency: 2437 MHz;Duty Cycle: 1:1.016

Medium: HSL2450;Medium parameters used: $f = 2437$ MHz; $\sigma = 1.735$ S/m; $\epsilon_r = 39.076$; $\rho = 1000$ kg/m³

Phantom section: Left Section

DASY 5 Configuration:

- Probe: EX3DV4 - SN7620; ConvF(8.2, 8.2, 8.2); Calibrated: 2022/11/20
- Sensor-Surface: 1.4mm (Mechanical Surface Detection)
- Electronics: DAE4 Sn1267; Calibrated: 2022/12/10
- Phantom: SAM 2; Type: SAM Twin; Serial: 1640
- DASY52 52.10.4(1527); SEMCAD X 14.6.14(7483)

Configuration/Head/Area Scan (10x17x1): Measurement grid: dx=12mm, dy=12mm

Maximum value of SAR (measured) = 0.383 W/kg

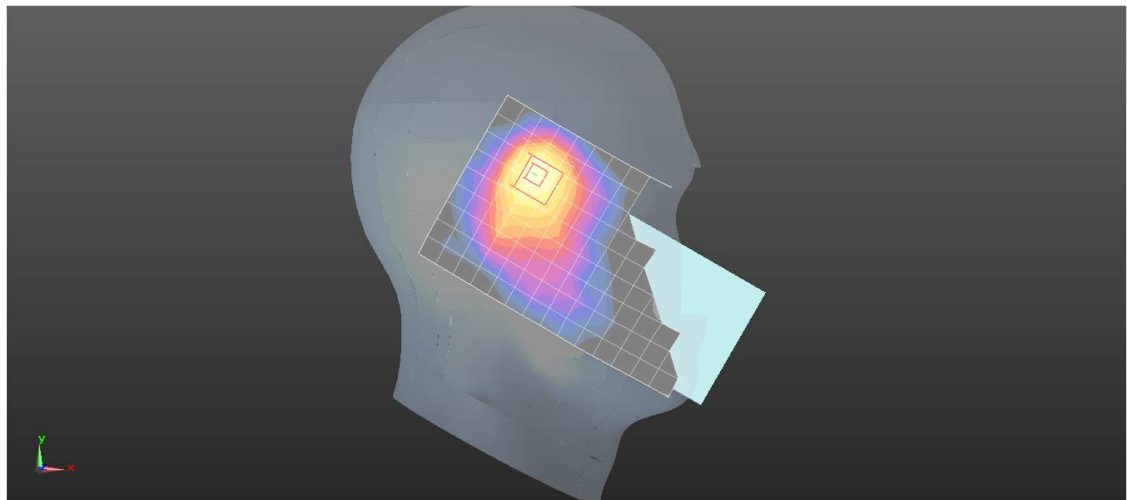
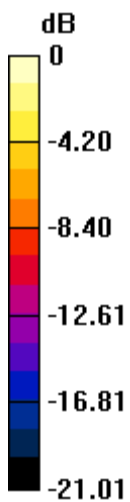
Configuration/Head/Zoom Scan (7x7x7)/Cube 0: Measurement grid: dx=5mm, dy=5mm, dz=5mm

Reference Value = 5.262 V/m; Power Drift = 0.09 dB

Peak SAR (extrapolated) = 0.546 W/kg

SAR(1 g) = 0.259 W/kg; SAR(10 g) = 0.125 W/kg

Maximum value of SAR (measured) = 0.418 W/kg



0 dB = 0.418 W/kg = -3.79 dBW/kg

Test Laboratory: SGS-SAR Lab

V2247 WIFI 2.4G 802.11b 6CH Back side 15mm Ant22

DUT: V2247; Type: Mobile Phone; Serial: 863548060193590

Communication System: UID 0, WI-FI(2.4GHz) (0); Frequency: 2437 MHz;Duty Cycle: 1:1.016

Medium: HSL2450;Medium parameters used: $f = 2437$ MHz; $\sigma = 1.735$ S/m; $\epsilon_r = 39.076$; $\rho = 1000$ kg/m³

Phantom section: Flat Section

DASY 5 Configuration:

- Probe: EX3DV4 - SN7620; ConvF(8.2, 8.2, 8.2); Calibrated: 2022/11/20
- Sensor-Surface: 1.4mm (Mechanical Surface Detection)
- Electronics: DAE4 Sn1267; Calibrated: 2022/12/10
- Phantom: SAM 2; Type: SAM Twin; Serial: 1640
- DASY52 52.10.4(1527); SEMCAD X 14.6.14(7483)

Configuration/Body/Area Scan (10x16x1): Measurement grid: dx=12mm, dy=12mm

Maximum value of SAR (measured) = 0.119 W/kg

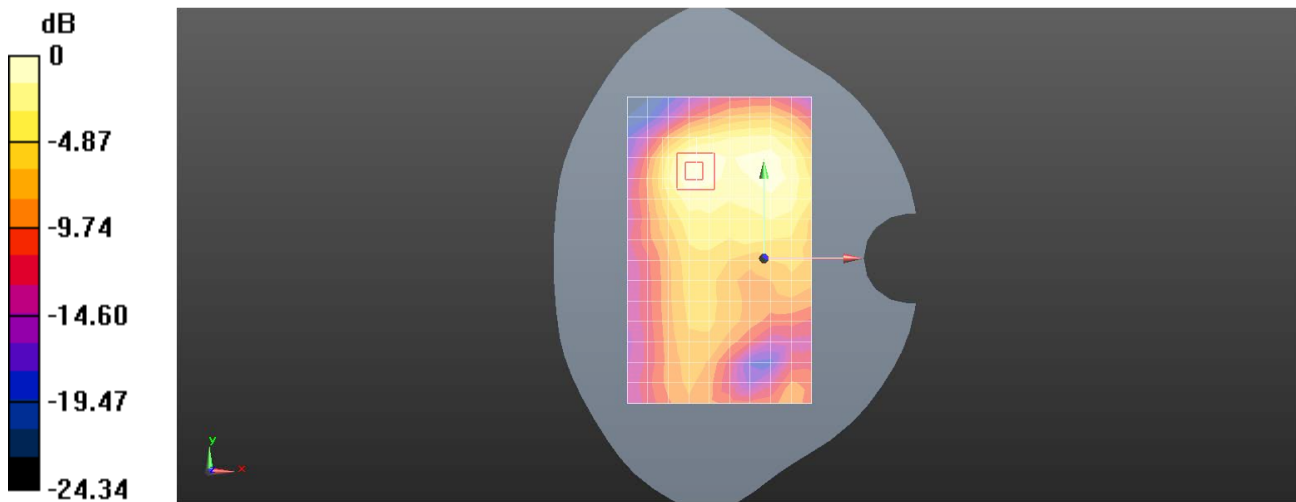
Configuration/Body/Zoom Scan (7x7x7)/Cube 0: Measurement grid: dx=5mm, dy=5mm, dz=5mm

Reference Value = 3.628 V/m; Power Drift = -0.02 dB

Peak SAR (extrapolated) = 0.162 W/kg

SAR(1 g) = 0.078 W/kg; SAR(10 g) = 0.041 W/kg

Maximum value of SAR (measured) = 0.127 W/kg



0 dB = 0.127 W/kg = -8.96 dBW/kg

Test Laboratory: SGS-SAR Lab

V2247 WIFI 2.4G 802.11b 6CH Back side 10mm Ant22

DUT: V2247; Type: Mobile Phone; Serial: 863548060193590

Communication System: UID 0, WI-FI(2.4GHz) (0); Frequency: 2437 MHz;Duty Cycle: 1:1.016

Medium: HSL2450;Medium parameters used: $f = 2437$ MHz; $\sigma = 1.735$ S/m; $\epsilon_r = 39.076$; $\rho = 1000$ kg/m³
Phantom section: Flat Section

DASY 5 Configuration:

- Probe: EX3DV4 - SN7620; ConvF(8.2, 8.2, 8.2); Calibrated: 2022/11/20
- Sensor-Surface: 1.4mm (Mechanical Surface Detection)
- Electronics: DAE4 Sn1267; Calibrated: 2022/12/10
- Phantom: SAM 2; Type: SAM Twin; Serial: 1640
- DASY52 52.10.4(1527); SEMCAD X 14.6.14(7483)

Configuration/Body/Area Scan (10x16x1): Measurement grid: dx=12mm, dy=12mm

Maximum value of SAR (measured) = 0.312 W/kg

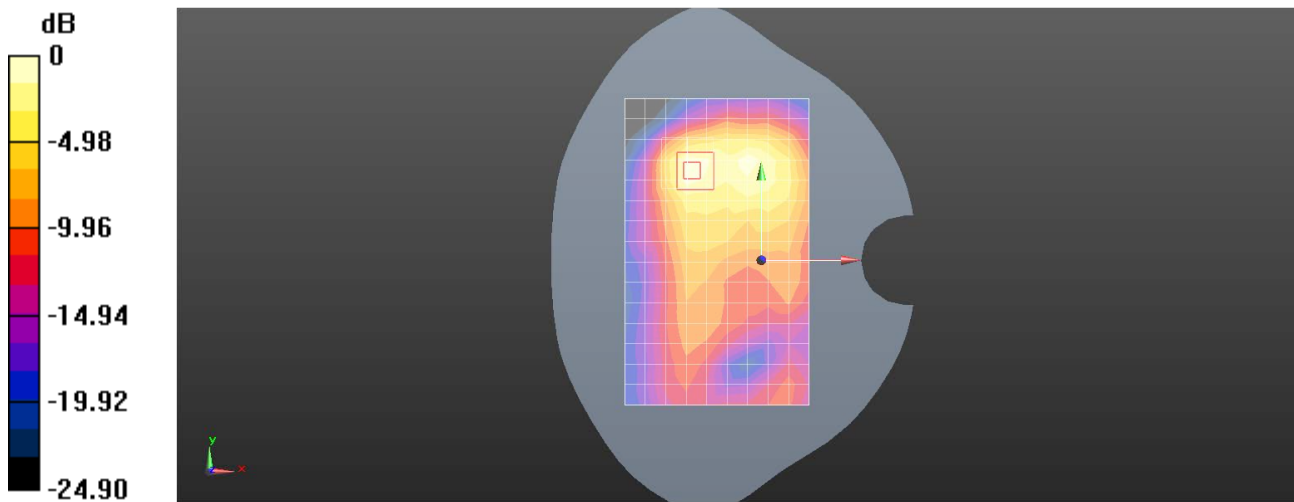
Configuration/Body/Zoom Scan (7x7x7)/Cube 0: Measurement grid: dx=5mm, dy=5mm, dz=5mm

Reference Value = 4.400 V/m; Power Drift = -0.03 dB

Peak SAR (extrapolated) = 0.465 W/kg

SAR(1 g) = 0.209 W/kg; SAR(10 g) = 0.101 W/kg

Maximum value of SAR (measured) = 0.355 W/kg



0 dB = 0.355 W/kg = -4.50 dBW/kg

Test Laboratory: SGS-SAR Lab

V2247 WIFI 5G 802.11a 52CH Left tilted Ant22

DUT: V2247; Type: Mobile Phone; Serial: 863548060193491

Communication System: UID 0, WI-FI(5GHz) (0); Frequency: 5260 MHz;Duty Cycle: 1:1.021

Medium: HSL5G;Medium parameters used: $f = 5260$ MHz; $\sigma = 4.67$ S/m; $\epsilon_r = 36.719$; $\rho = 1000$ kg/m³

Phantom section: Left Section

DASY 5 Configuration:

- Probe: EX3DV4 - SN3789; ConvF(5.02, 5.02, 5.02); Calibrated: 2022/9/30
- Sensor-Surface: 1.4mm (Mechanical Surface Detection)
- Electronics: DAE4 Sn702; Calibrated: 2022/11/9
- Phantom: SAM 4; Type: SAM; Serial: 1913
- DASY52 52.10.4(1527); SEMCAD X 14.6.14(7483)

Configuration/Head/Area Scan (11x20x1): Measurement grid: dx=10mm, dy=10mm

Maximum value of SAR (measured) = 0.928 W/kg

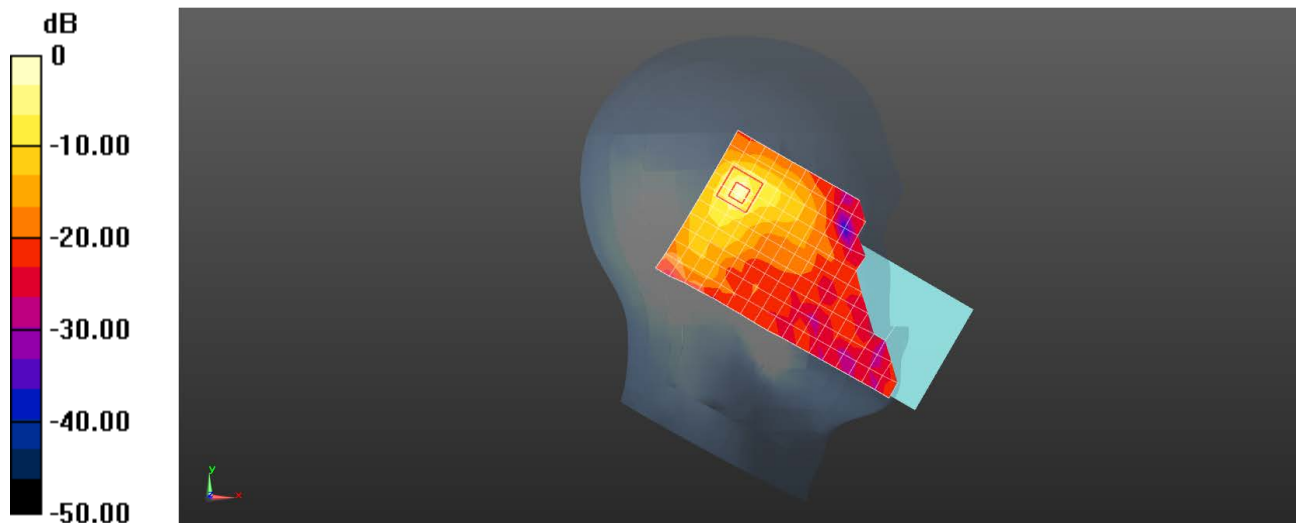
Configuration/Head/Zoom Scan (7x7x12)/Cube 0: Measurement grid: dx=4mm, dy=4mm, dz=2mm

Reference Value = 3.166 V/m; Power Drift = -0.04 dB

Peak SAR (extrapolated) = 1.69 W/kg

SAR(1 g) = 0.373 W/kg; SAR(10 g) = 0.094 W/kg

Maximum value of SAR (measured) = 0.983 W/kg



0 dB = 0.983 W/kg = -0.07 dBW/kg

Test Laboratory: SGS-SAR Lab

V2247 WIFI 5G 802.11a 165CH Back side 15mm Ant22

DUT: V2247; Type: Mobile Phone; Serial: 863548060193491

Communication System: UID 0, WI-FI(5GHz) (0); Frequency: 5825 MHz;Duty Cycle: 1:1.021

Medium: HSL5G;Medium parameters used: $f = 5825$ MHz; $\sigma = 5.315$ S/m; $\epsilon_r = 35.163$; $\rho = 1000$ kg/m³

Phantom section: Flat Section

DASY 5 Configuration:

- Probe: EX3DV4 - SN3789; ConvF(4.55, 4.55, 4.55); Calibrated: 2022/9/30
- Sensor-Surface: 1.4mm (Mechanical Surface Detection)
- Electronics: DAE4 Sn702; Calibrated: 2022/11/9
- Phantom: SAM 4; Type: SAM; Serial: 1913
- DASY52 52.10.4(1527); SEMCAD X 14.6.14(7483)

Configuration/Body/Area Scan (11x19x1): Measurement grid: dx=10mm, dy=10mm

Maximum value of SAR (measured) = 0.962 W/kg

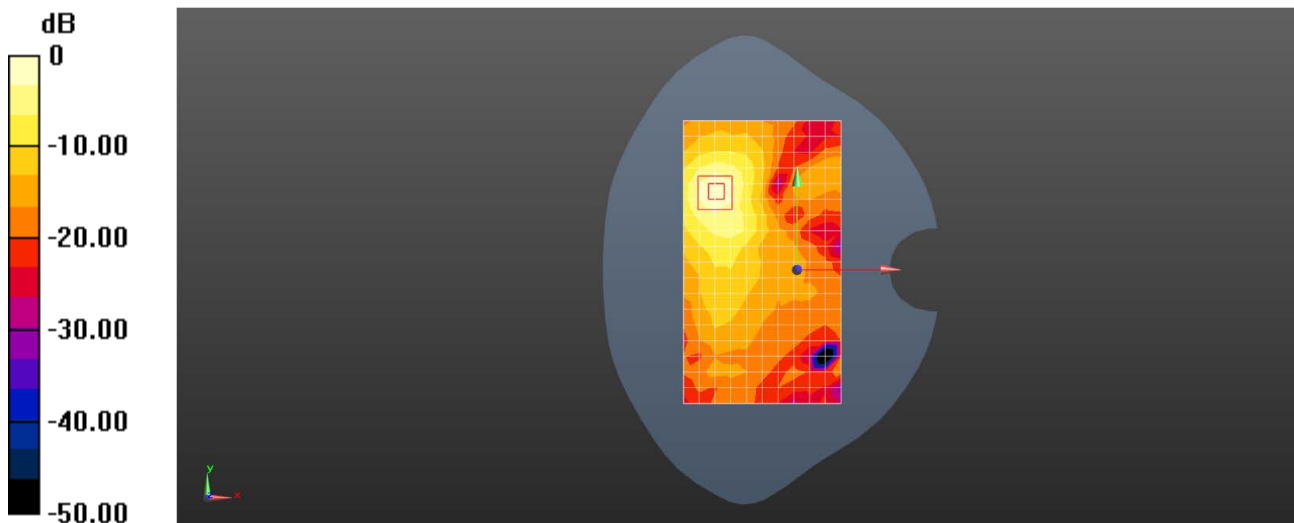
Configuration/Body/Zoom Scan (7x7x12)/Cube 0: Measurement grid: dx=4mm, dy=4mm, dz=2mm

Reference Value = 1.855 V/m; Power Drift = 0.19 dB

Peak SAR (extrapolated) = 1.78 W/kg

SAR(1 g) = 0.461 W/kg; SAR(10 g) = 0.165 W/kg

Maximum value of SAR (measured) = 1.08 W/kg



0 dB = 1.08 W/kg = 0.33 dBW/kg

Test Laboratory: SGS-SAR Lab

V2247 WIFI 5G 802.11a 165CH Back side 10mm Ant22

DUT: V2247; Type: Mobile Phone; Serial: 863548060193491

Communication System: UID 0, WI-FI(5GHz) (0); Frequency: 5825 MHz;Duty Cycle: 1:1.021

Medium: HSL5G;Medium parameters used: $f = 5825$ MHz; $\sigma = 5.315$ S/m; $\epsilon_r = 35.163$; $\rho = 1000$ kg/m³

Phantom section: Flat Section

DASY 5 Configuration:

- Probe: EX3DV4 - SN3789; ConvF(4.55, 4.55, 4.55); Calibrated: 2022/9/30
- Sensor-Surface: 1.4mm (Mechanical Surface Detection)
- Electronics: DAE4 Sn702; Calibrated: 2022/11/9
- Phantom: SAM 4; Type: SAM; Serial: 1913
- DASY52 52.10.4(1527); SEMCAD X 14.6.14(7483)

Configuration/Body/Area Scan (11x19x1): Measurement grid: dx=10mm, dy=10mm

Maximum value of SAR (measured) = 1.70 W/kg

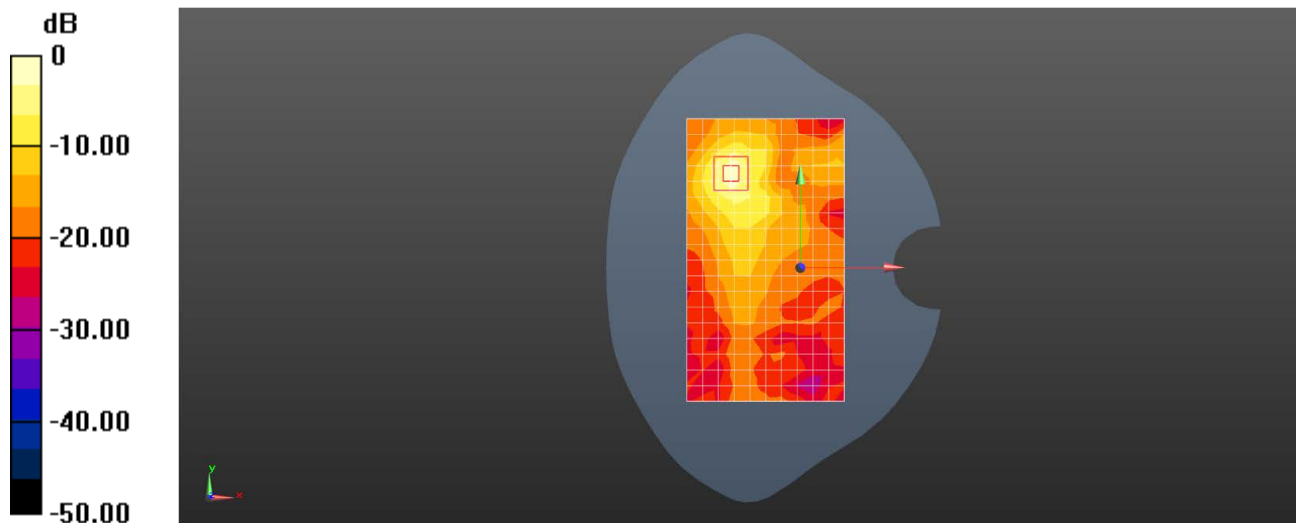
Configuration/Body/Zoom Scan (7x7x12)/Cube 0: Measurement grid: dx=4mm, dy=4mm, dz=2mm

Reference Value = 1.938 V/m; Power Drift = 0.06 dB

Peak SAR (extrapolated) = 3.55 W/kg

SAR(1 g) = 0.843 W/kg; SAR(10 g) = 0.254 W/kg

Maximum value of SAR (measured) = 2.12 W/kg



0 dB = 2.12 W/kg = 3.26 dBW/kg

Test Laboratory: SGS-SAR Lab

V2247 WIFI 5G 802.11a 52CH Top side 0mm Ant22

DUT: V2247; Type: Mobile Phone; Serial: 863548060193491

Communication System: UID 0, WI-FI(5GHz) (0); Frequency: 5260 MHz;Duty Cycle: 1:1.021

Medium: HSL5G;Medium parameters used: $f = 5260$ MHz; $\sigma = 4.67$ S/m; $\epsilon_r = 36.719$; $\rho = 1000$ kg/m³

Phantom section: Flat Section

DASY 5 Configuration:

- Probe: EX3DV4 - SN3789; ConvF(5.02, 5.02, 5.02); Calibrated: 2022/9/30
- Sensor-Surface: 1.4mm (Mechanical Surface Detection)
- Electronics: DAE4 Sn702; Calibrated: 2022/11/9
- Phantom: SAM 4; Type: SAM; Serial: 1913
- DASY52 52.10.4(1527); SEMCAD X 14.6.14(7483)

Configuration/Body/Area Scan (6x11x1): Measurement grid: dx=10mm, dy=10mm

Maximum value of SAR (measured) = 9.33 W/kg

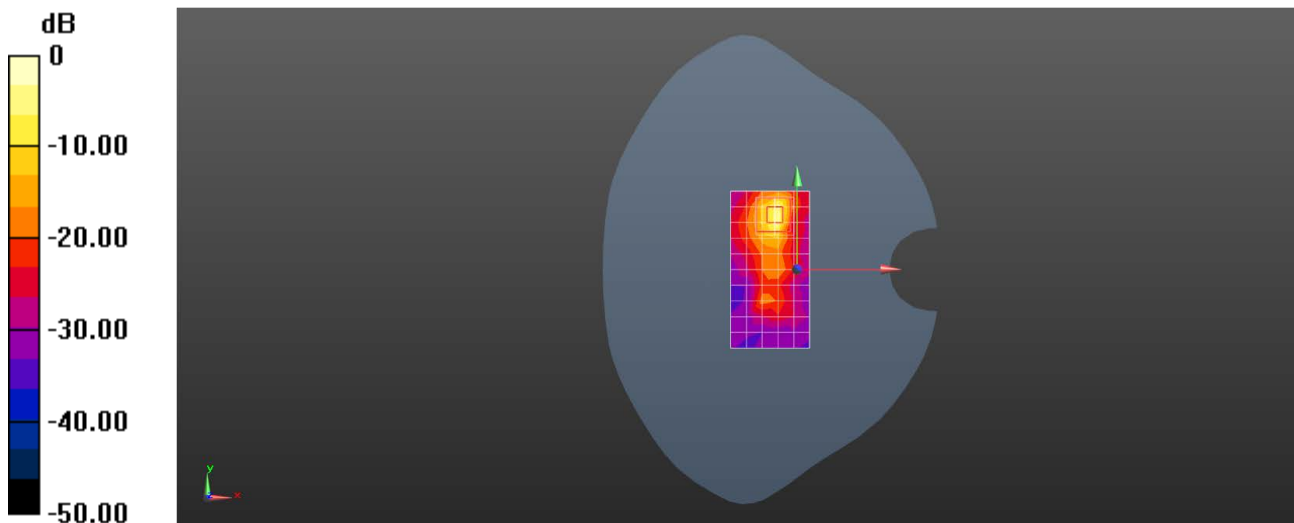
Configuration/Body/Zoom Scan (7x7x12)/Cube 0: Measurement grid: dx=4mm, dy=4mm, dz=2mm

Reference Value = 7.705 V/m; Power Drift = -0.04 dB

Peak SAR (extrapolated) = 40.1 W/kg

SAR(1 g) = 5.49 W/kg; SAR(10 g) = 0.968 W/kg

Maximum value of SAR (measured) = 22.2 W/kg



0 dB = 22.2 W/kg = 13.46 dBW/kg

Test Laboratory: SGS-SAR Lab

V2247 Bluetooth DH5 39CH Left cheek Ant22

DUT: V2247; Type: Mobile Phone; Serial: 863548060193590

Communication System: UID 0, Bluetooth (0); Frequency: 2441 MHz; Duty Cycle: 1:1.295

Medium: HSL2450; Medium parameters used: $f = 2441$ MHz; $\sigma = 1.74$ S/m; $\epsilon_r = 39.058$; $\rho = 1000$ kg/m³

Phantom section: Left Section

DASY 5 Configuration:

- Probe: EX3DV4 - SN7620; ConvF(8.2, 8.2, 8.2); Calibrated: 2022/11/20
- Sensor-Surface: 1.4mm (Mechanical Surface Detection)
- Electronics: DAE4 Sn1267; Calibrated: 2022/12/10
- Phantom: SAM 2; Type: SAM Twin; Serial: 1640
- DASY52 52.10.4(1527); SEMCAD X 14.6.14(7483)

Configuration/Head/Area Scan (9x17x1): Measurement grid: dx=12mm, dy=12mm

Maximum value of SAR (measured) = 0.285 W/kg

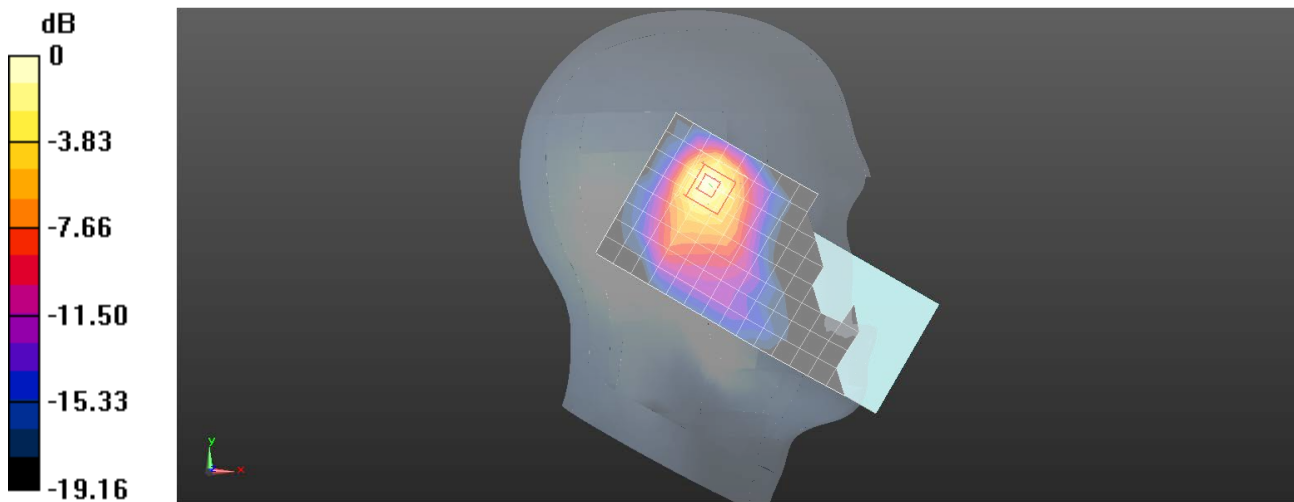
Configuration/Head/Zoom Scan (7x7x7)/Cube 0: Measurement grid: dx=5mm, dy=5mm, dz=5mm

Reference Value = 4.069 V/m; Power Drift = 0.06 dB

Peak SAR (extrapolated) = 0.347 W/kg

SAR(1 g) = 0.174 W/kg; SAR(10 g) = 0.085 W/kg

Maximum value of SAR (measured) = 0.280 W/kg



0 dB = 0.280 W/kg = -5.53 dBW/kg

Test Laboratory: SGS-SAR Lab

V2247 Bluetooth DH5 39CH Back side 15mm Ant22

DUT: V2247; Type: Mobile Phone; Serial: 863548060193590

Communication System: UID 0, Bluetooth (0); Frequency: 2441 MHz; Duty Cycle: 1:1.295

Medium: HSL2450; Medium parameters used: $f = 2441$ MHz; $\sigma = 1.74$ S/m; $\epsilon_r = 39.058$; $\rho = 1000$ kg/m³

Phantom section: Flat Section

DASY 5 Configuration:

- Probe: EX3DV4 - SN7620; ConvF(8.2, 8.2, 8.2); Calibrated: 2022/11/20
- Sensor-Surface: 1.4mm (Mechanical Surface Detection)
- Electronics: DAE4 Sn1267; Calibrated: 2022/12/10
- Phantom: SAM 2; Type: SAM Twin; Serial: 1640
- DASY52 52.10.4(1527); SEMCAD X 14.6.14(7483)

Configuration/Body/Area Scan (9x16x1): Measurement grid: dx=12mm, dy=12mm

Maximum value of SAR (measured) = 0.0276 W/kg

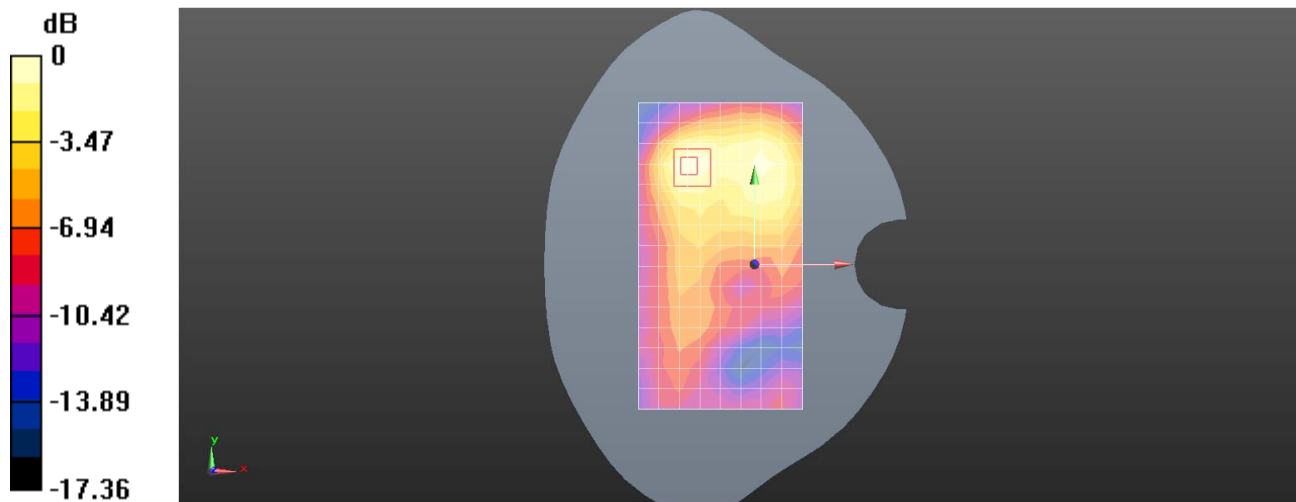
Configuration/Body/Zoom Scan (7x7x7)/Cube 0: Measurement grid: dx=5mm, dy=5mm, dz=5mm

Reference Value = 1.546 V/m; Power Drift = -0.14 dB

Peak SAR (extrapolated) = 0.0370 W/kg

SAR(1 g) = 0.018 W/kg; SAR(10 g) = 0.00947 W/kg

Maximum value of SAR (measured) = 0.0293 W/kg



0 dB = 0.0293 W/kg = -15.33 dBW/kg

Test Laboratory: SGS-SAR Lab

V2247 Bluetooth DH5 39CH Back side 10mm Ant22

DUT: V2247; Type: Mobile Phone; Serial: 863548060193590

Communication System: UID 0, Bluetooth (0); Frequency: 2441 MHz; Duty Cycle: 1:1.295

Medium: HSL2450; Medium parameters used: $f = 2441$ MHz; $\sigma = 1.74$ S/m; $\epsilon_r = 39.058$; $\rho = 1000$ kg/m³

Phantom section: Flat Section

DASY 5 Configuration:

- Probe: EX3DV4 - SN7620; ConvF(8.2, 8.2, 8.2); Calibrated: 2022/11/20
- Sensor-Surface: 1.4mm (Mechanical Surface Detection)
- Electronics: DAE4 Sn1267; Calibrated: 2022/12/10
- Phantom: SAM 2; Type: SAM Twin; Serial: 1640
- DASY52 52.10.4(1527); SEMCAD X 14.6.14(7483)

Configuration/Body/Area Scan (9x16x1): Measurement grid: dx=12mm, dy=12mm

Maximum value of SAR (measured) = 0.0726 W/kg

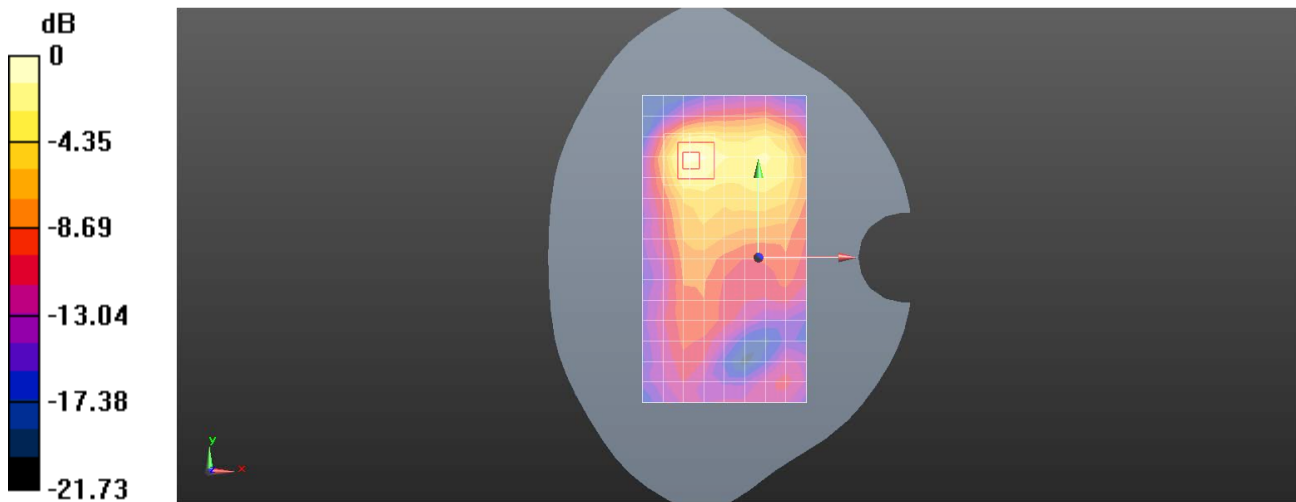
Configuration/Body/Zoom Scan (7x7x7)/Cube 0: Measurement grid: dx=5mm, dy=5mm, dz=5mm

Reference Value = 1.831 V/m; Power Drift = -0.09 dB

Peak SAR (extrapolated) = 0.109 W/kg

SAR(1 g) = 0.047 W/kg; SAR(10 g) = 0.022 W/kg

Maximum value of SAR (measured) = 0.0838 W/kg



0 dB = 0.0838 W/kg = -10.77 dBW/kg