

18_LTE Band 13_10M_QPSK_1RB_0Offset_Back_10mm_Ch23230

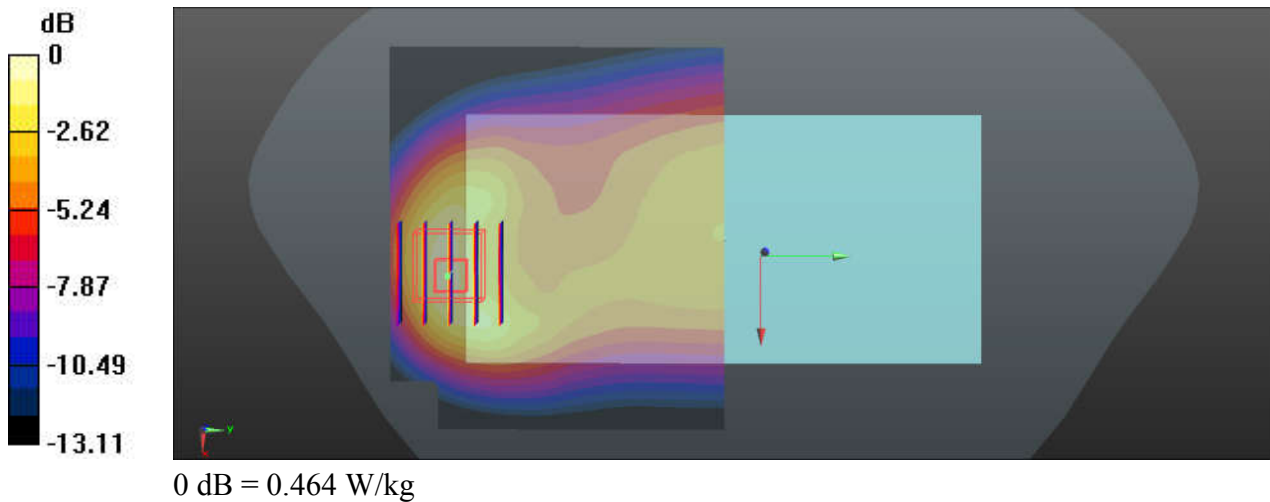
Communication System: UID 0, Generic LTE (0); Frequency: 782 MHz; Duty Cycle: 1:1
Medium: HSL_750_220702 Medium parameters used: $f = 782$ MHz; $\sigma = 0.901$ S/m; $\epsilon_r = 40.08$; $\rho = 1000$ kg/m³
Ambient Temperature : 23.2 °C; Liquid Temperature : 22.5 °C

DASY5 Configuration:

- Probe: EX3DV4 - SN3819; ConvF(9.82, 9.82, 9.82); Calibrated: 2022/5/30
- Sensor-Surface: 1.4mm (Mechanical Surface Detection)
- Electronics: DAE4 Sn715; Calibrated: 2021/12/29
- Phantom: SAM (30deg probe tilt) with CRP v4.0; Type: QD000P40CC; Serial: TP: 1500
- Measurement SW: DASY52, Version 52.10 (3); SEMCAD X Version 14.6.13 (7474)

Ch23230/Area Scan (81x71x1): Interpolated grid: dx=1.500 mm, dy=1.500 mm
Maximum value of SAR (interpolated) = 0.438 W/kg

Ch23230/Zoom Scan (5x5x7)/Cube 0: Measurement grid: dx=8mm, dy=8mm, dz=5mm
Reference Value = 16.65 V/m; Power Drift = -0.05 dB
Peak SAR (extrapolated) = 0.568 W/kg
SAR(1 g) = 0.309 W/kg; SAR(10 g) = 0.178 W/kg
Maximum value of SAR (measured) = 0.464 W/kg



19_GSM850_GPRS 4 Tx slots_Back_10mm_Ch189

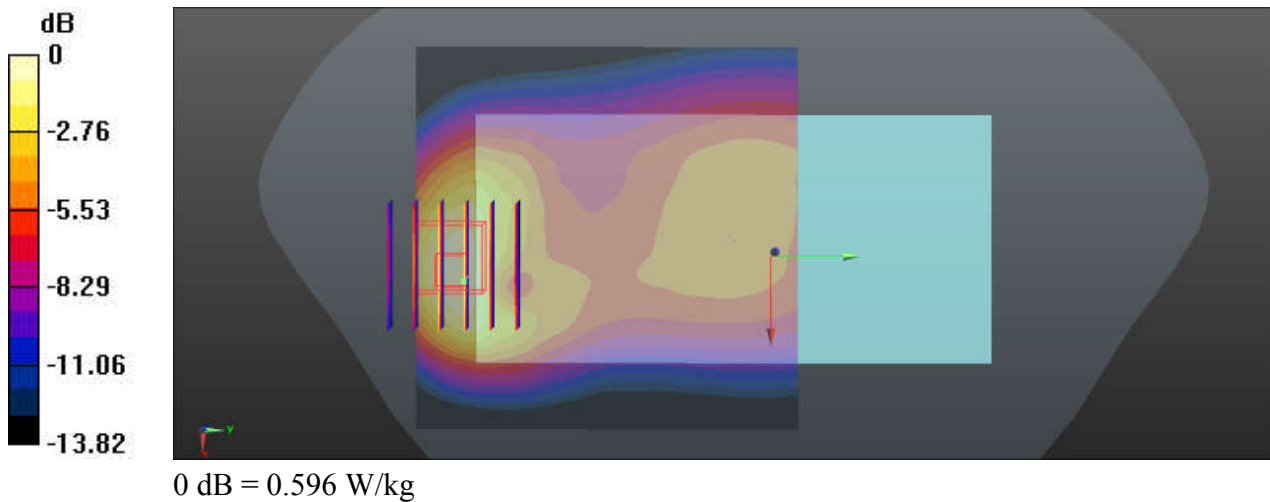
Communication System: UID 0, GPRS/EDGE12 (0); Frequency: 836.4 MHz; Duty Cycle: 1:2.08
Medium: HSL_835_220703 Medium parameters used: $f = 836.4$ MHz; $\sigma = 0.914$ S/m; $\epsilon_r = 40.842$;
 $\rho = 1000$ kg/m³
Ambient Temperature : 23.4 °C; Liquid Temperature : 22.3 °C

DASY5 Configuration:

- Probe: EX3DV4 - SN3819; ConvF(9.51, 9.51, 9.51); Calibrated: 2022/5/30
- Sensor-Surface: 1.4mm (Mechanical Surface Detection)
- Electronics: DAE4 Sn715; Calibrated: 2021/12/29
- Phantom: SAM (30deg probe tilt) with CRP v4.0; Type: QD000P40CC; Serial: TP: 1500
- Measurement SW: DASY52, Version 52.10 (3); SEMCAD X Version 14.6.13 (7474)

Ch189/Area Scan (81x81x1): Interpolated grid: dx=1.500 mm, dy=1.500 mm
Maximum value of SAR (interpolated) = 0.606 W/kg

Ch189/Zoom Scan (6x6x7)/Cube 0: Measurement grid: dx=8mm, dy=8mm, dz=5mm
Reference Value = 13.92 V/m; Power Drift = 0.16 dB
Peak SAR (extrapolated) = 0.785 W/kg
SAR(1 g) = 0.409 W/kg; SAR(10 g) = 0.229 W/kg
Maximum value of SAR (measured) = 0.596 W/kg



20_WCDMA V_RMC 12.2Kbps_Back_10mm_Ch4182

Communication System: UID 0, Generic WCDMA (0); Frequency: 836.4 MHz; Duty Cycle: 1:1
 Medium: HSL_835_220703 Medium parameters used: $f = 836.4$ MHz; $\sigma = 0.914$ S/m; $\epsilon_r = 40.842$;
 $\rho = 1000$ kg/m³
 Ambient Temperature : 23.4 °C; Liquid Temperature : 22.3 °C

DASY5 Configuration:

- Probe: EX3DV4 - SN3819; ConvF(9.51, 9.51, 9.51); Calibrated: 2022/5/30
- Sensor-Surface: 1.4mm (Mechanical Surface Detection)
- Electronics: DAE4 Sn715; Calibrated: 2021/12/29
- Phantom: SAM (30deg probe tilt) with CRP v4.0; Type: QD000P40CC; Serial: TP: 1500
- Measurement SW: DASY52, Version 52.10 (3); SEMCAD X Version 14.6.13 (7474)

Ch4182/Area Scan (81x91x1): Interpolated grid: dx=1.500 mm, dy=1.500 mm

Maximum value of SAR (interpolated) = 0.436 W/kg

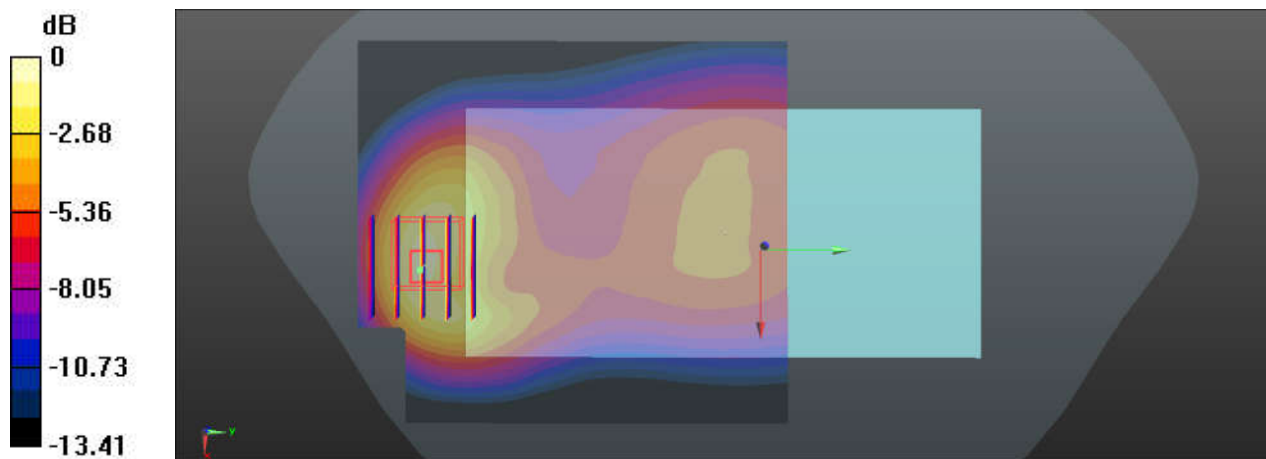
Ch4182/Zoom Scan (5x5x7)/Cube 0: Measurement grid: dx=8mm, dy=8mm, dz=5mm

Reference Value = 12.23 V/m; Power Drift = -0.07 dB

Peak SAR (extrapolated) = 0.621 W/kg

SAR(1 g) = 0.330 W/kg; SAR(10 g) = 0.188 W/kg

Maximum value of SAR (measured) = 0.487 W/kg



0 dB = 0.487 W/kg

21_LTE Band 26_15M_QPSK_1RB_37Offset_Back_10mm_Ch26865

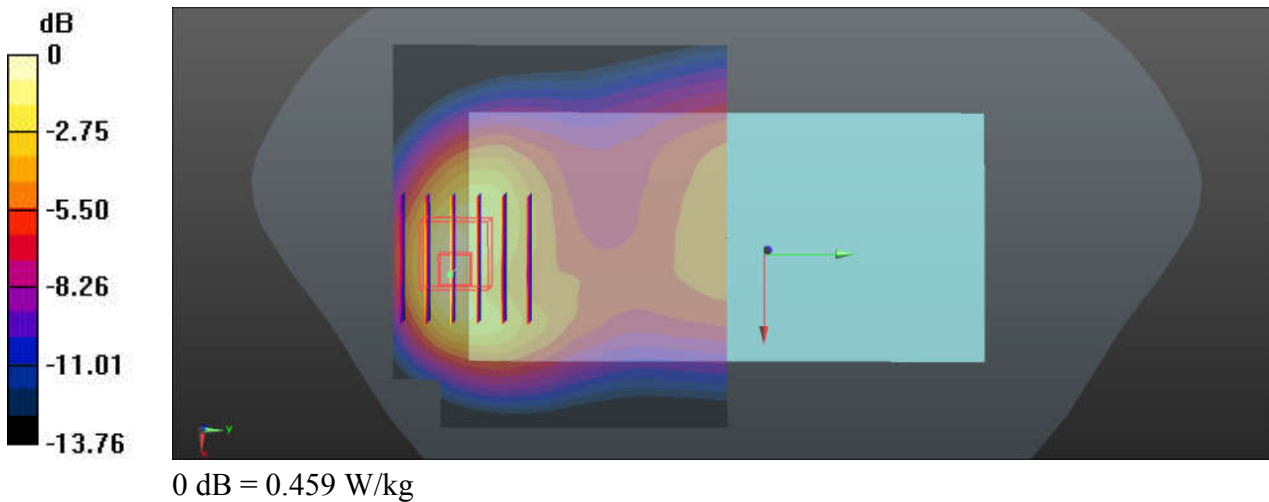
Communication System: UID 0, Generic LTE (0); Frequency: 831.5 MHz; Duty Cycle: 1:1
Medium: HSL_835_220703 Medium parameters used: $f = 831.5$ MHz; $\sigma = 0.91$ S/m; $\epsilon_r = 40.896$; $\rho = 1000$ kg/m³
Ambient Temperature : 23.4 °C; Liquid Temperature : 22.3 °C

DASY5 Configuration:

- Probe: EX3DV4 - SN3819; ConvF(9.51, 9.51, 9.51); Calibrated: 2022/5/30
- Sensor-Surface: 1.4mm (Mechanical Surface Detection)
- Electronics: DAE4 Sn715; Calibrated: 2021/12/29
- Phantom: SAM (30deg probe tilt) with CRP v4.0; Type: QD000P40CC; Serial: TP: 1500
- Measurement SW: DASY52, Version 52.10 (3); SEMCAD X Version 14.6.13 (7474)

Ch26865/Area Scan (81x71x1): Interpolated grid: dx=1.500 mm, dy=1.500 mm
Maximum value of SAR (interpolated) = 0.427 W/kg

Ch26865/Zoom Scan (6x6x7)/Cube 0: Measurement grid: dx=8mm, dy=8mm, dz=5mm
Reference Value = 13.50 V/m; Power Drift = -0.06 dB
Peak SAR (extrapolated) = 0.576 W/kg
SAR(1 g) = 0.310 W/kg; SAR(10 g) = 0.178 W/kg
Maximum value of SAR (measured) = 0.459 W/kg



22_WCDMA IV_RMC 12.2Kbps_Bottom Side_10mm_Ch1413

Communication System: UID 0, Generic WCDMA (0); Frequency: 1732.6 MHz; Duty Cycle: 1:1
 Medium: HSL_1750_220705 Medium parameters used: $f = 1732.6$ MHz; $\sigma = 1.387$ S/m; $\epsilon_r = 41.785$; $\rho = 1000$ kg/m³
 Ambient Temperature : 23.5 °C; Liquid Temperature : 22.7 °C

DASY5 Configuration:

- Probe: EX3DV4 - SN3819; ConvF(8.57, 8.57, 8.57); Calibrated: 2022/5/30
- Sensor-Surface: 1.4mm (Mechanical Surface Detection)
- Electronics: DAE4 Sn715; Calibrated: 2021/12/29
- Phantom: SAM (30deg probe tilt) with CRP v4.0; Type: QD000P40CC; Serial: TP: 1500
- Measurement SW: DASY52, Version 52.10 (3); SEMCAD X Version 14.6.13 (7474)

Ch1413/Area Scan (41x81x1): Interpolated grid: dx=1.500 mm, dy=1.500 mm

Maximum value of SAR (interpolated) = 0.969 W/kg

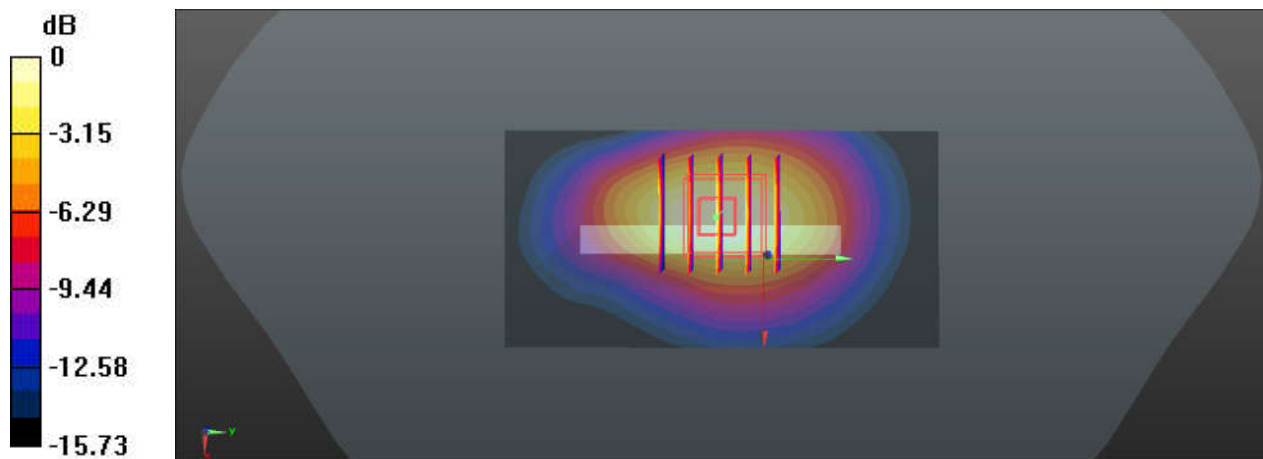
Ch1413/Zoom Scan (5x5x7)/Cube 0: Measurement grid: dx=8mm, dy=8mm, dz=5mm

Reference Value = 7.980 V/m; Power Drift = 0.11 dB

Peak SAR (extrapolated) = 1.09 W/kg

SAR(1 g) = 0.685 W/kg; SAR(10 g) = 0.411 W/kg

Maximum value of SAR (measured) = 0.953 W/kg



0 dB = 0.953 W/kg

23_LTE Band 66_20M_QPSK_1RB_49Offset_Bottom Side_10mm_Ch132322

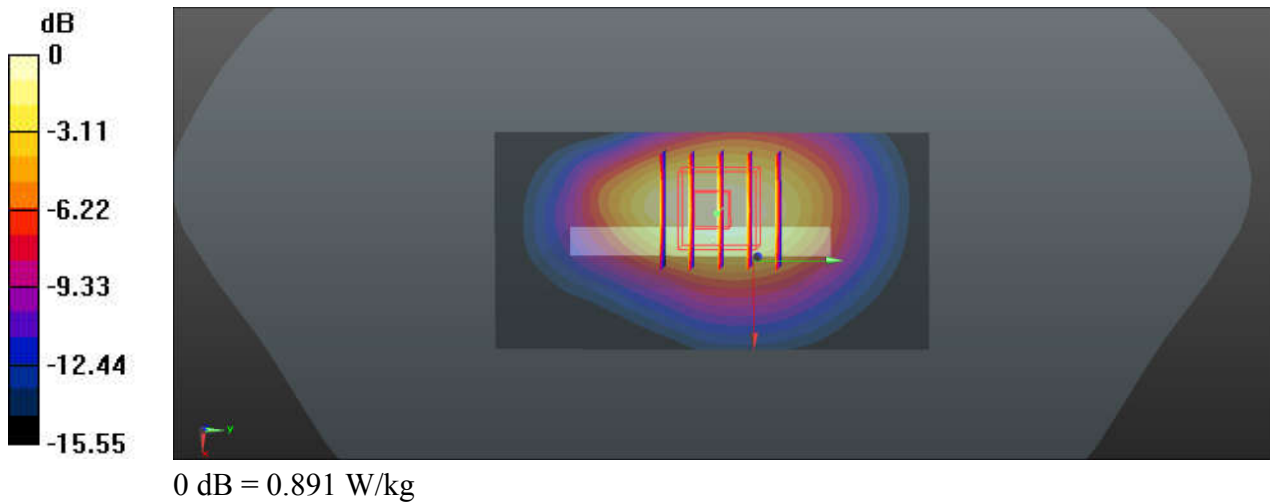
Communication System: UID 0, Generic LTE (0); Frequency: 1745 MHz; Duty Cycle: 1:1
 Medium: HSL_1750_220705 Medium parameters used: $f = 1745$ MHz; $\sigma = 1.401$ S/m; $\epsilon_r = 41.733$;
 $\rho = 1000$ kg/m³
 Ambient Temperature : 23.5 °C; Liquid Temperature : 22.7 °C

DASY5 Configuration:

- Probe: EX3DV4 - SN3819; ConvF(8.57, 8.57, 8.57); Calibrated: 2022/5/30
- Sensor-Surface: 1.4mm (Mechanical Surface Detection)
- Electronics: DAE4 Sn715; Calibrated: 2021/12/29
- Phantom: SAM (30deg probe tilt) with CRP v4.0; Type: QD000P40CC; Serial: TP: 1500
- Measurement SW: DASY52, Version 52.10 (3); SEMCAD X Version 14.6.13 (7474)

Ch132322/Area Scan (41x81x1): Interpolated grid: dx=1.500 mm, dy=1.500 mm
 Maximum value of SAR (interpolated) = 0.906 W/kg

Ch132322/Zoom Scan (5x5x7)/Cube 0: Measurement grid: dx=8mm, dy=8mm, dz=5mm
 Reference Value = 22.19 V/m; Power Drift = 0.05 dB
 Peak SAR (extrapolated) = 1.03 W/kg
SAR(1 g) = 0.647 W/kg; SAR(10 g) = 0.389 W/kg
 Maximum value of SAR (measured) = 0.891 W/kg



24_GSM1900_GPRS 4 Tx slots_Top Side_10mm_Ch661

Communication System: UID 0, GPRS/EDGE12 (0); Frequency: 1880 MHz; Duty Cycle: 1:2.08
 Medium: HSL_1900_220704 Medium parameters used: $f = 1880$ MHz; $\sigma = 1.435$ S/m; $\epsilon_r = 40.161$;
 $\rho = 1000$ kg/m³
 Ambient Temperature : 23.4 °C; Liquid Temperature : 22.4 °C

DASY5 Configuration:

- Probe: EX3DV4 - SN3819; ConvF(8.32, 8.32, 8.32); Calibrated: 2022/5/30
- Sensor-Surface: 1.4mm (Mechanical Surface Detection)
- Electronics: DAE4 Sn715; Calibrated: 2021/12/29
- Phantom: SAM (30deg probe tilt) with CRP v4.0; Type: QD000P40CC; Serial: TP: 1500
- Measurement SW: DASY52, Version 52.10 (3); SEMCAD X Version 14.6.13 (7474)

Ch661/Area Scan (41x81x1): Interpolated grid: dx=1.500 mm, dy=1.500 mm

Maximum value of SAR (interpolated) = 0.827 W/kg

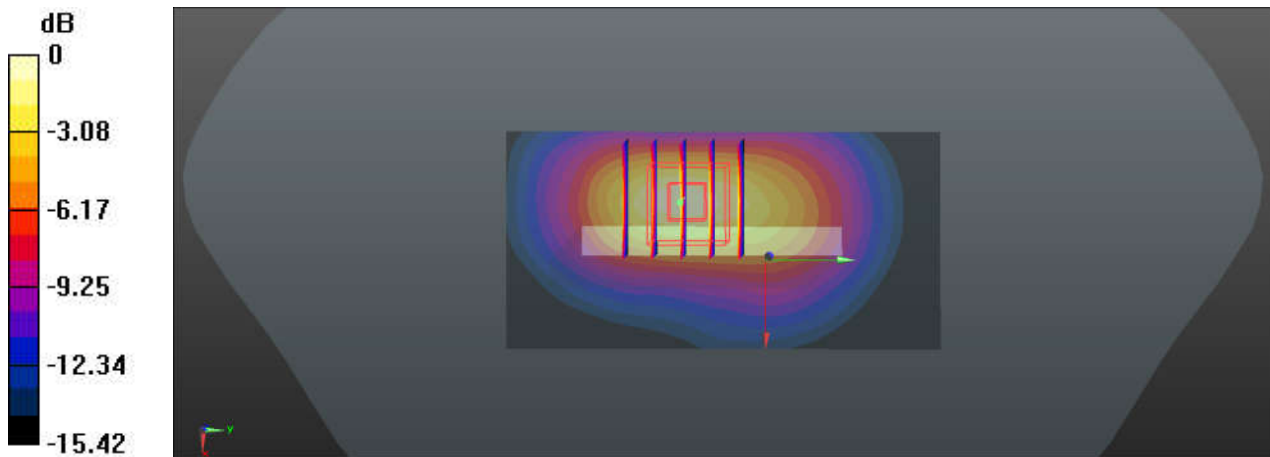
Ch661/Zoom Scan (5x5x7)/Cube 0: Measurement grid: dx=8mm, dy=8mm, dz=5mm

Reference Value = 6.360 V/m; Power Drift = 0.12 dB

Peak SAR (extrapolated) = 1.06 W/kg

SAR(1 g) = 0.592 W/kg; SAR(10 g) = 0.322 W/kg

Maximum value of SAR (measured) = 0.886 W/kg



0 dB = 0.886 W/kg

25_WCDMA II_RMC 12.2Kbps_Bottom Side_10mm_Ch9400

Communication System: UID 0, Generic WCDMA (0); Frequency: 1880 MHz; Duty Cycle: 1:1
 Medium: HSL_1900_220704 Medium parameters used: $f = 1880$ MHz; $\sigma = 1.435$ S/m; $\epsilon_r = 40.161$;
 $\rho = 1000$ kg/m³
 Ambient Temperature : 23.4 °C; Liquid Temperature : 22.4 °C

DASY5 Configuration:

- Probe: EX3DV4 - SN3819; ConvF(8.32, 8.32, 8.32); Calibrated: 2022/5/30
- Sensor-Surface: 1.4mm (Mechanical Surface Detection)
- Electronics: DAE4 Sn715; Calibrated: 2021/12/29
- Phantom: SAM (30deg probe tilt) with CRP v4.0; Type: QD000P40CC; Serial: TP: 1500
- Measurement SW: DASY52, Version 52.10 (3); SEMCAD X Version 14.6.13 (7474)

Ch9400/Area Scan (41x81x1): Interpolated grid: dx=1.500 mm, dy=1.500 mm

Maximum value of SAR (interpolated) = 0.784 W/kg

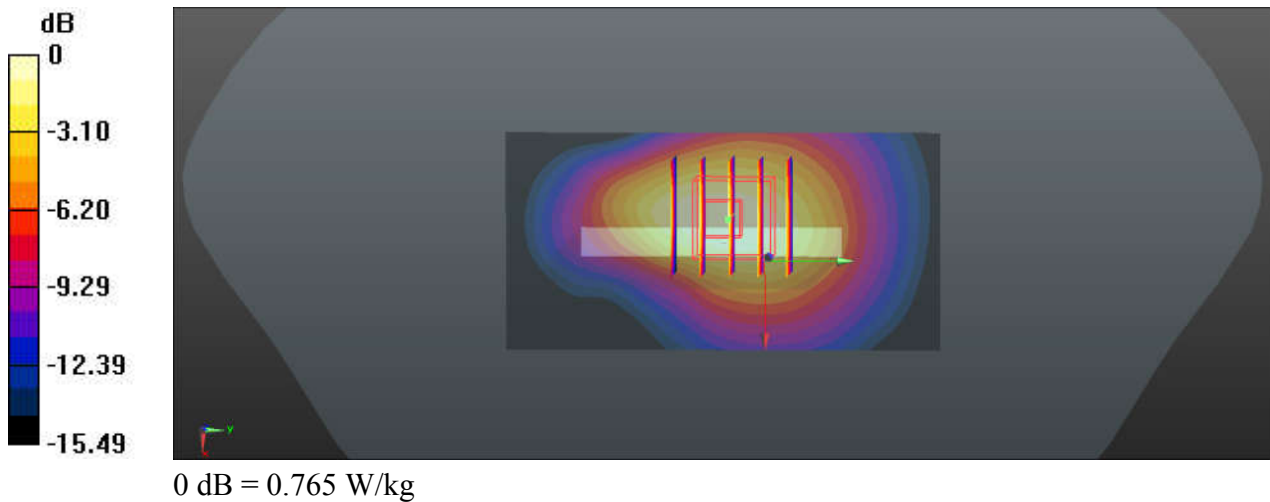
Ch9400/Zoom Scan (5x5x7)/Cube 0: Measurement grid: dx=8mm, dy=8mm, dz=5mm

Reference Value = 7.948 V/m; Power Drift = 0.07 dB

Peak SAR (extrapolated) = 0.908 W/kg

SAR(1 g) = 0.546 W/kg; SAR(10 g) = 0.331 W/kg

Maximum value of SAR (measured) = 0.765 W/kg



26_LTE Band 2_20M_QPSK_1RB_49Offset_Bottom Side_10mm_Ch18900

Communication System: UID 0, Generic LTE (0); Frequency: 1880 MHz; Duty Cycle: 1:1
 Medium: HSL_1900_220704 Medium parameters used: $f = 1880$ MHz; $\sigma = 1.435$ S/m; $\epsilon_r = 40.161$;
 $\rho = 1000$ kg/m³
 Ambient Temperature : 23.4 °C; Liquid Temperature : 22.4 °C

DASY5 Configuration:

- Probe: EX3DV4 - SN3819; ConvF(8.32, 8.32, 8.32); Calibrated: 2022/5/30
- Sensor-Surface: 1.4mm (Mechanical Surface Detection)
- Electronics: DAE4 Sn715; Calibrated: 2021/12/29
- Phantom: SAM (30deg probe tilt) with CRP v4.0; Type: QD000P40CC; Serial: TP: 1500
- Measurement SW: DASY52, Version 52.10 (3); SEMCAD X Version 14.6.13 (7474)

Ch18900/Area Scan (41x81x1): Interpolated grid: dx=1.500 mm, dy=1.500 mm

Maximum value of SAR (interpolated) = 0.729 W/kg

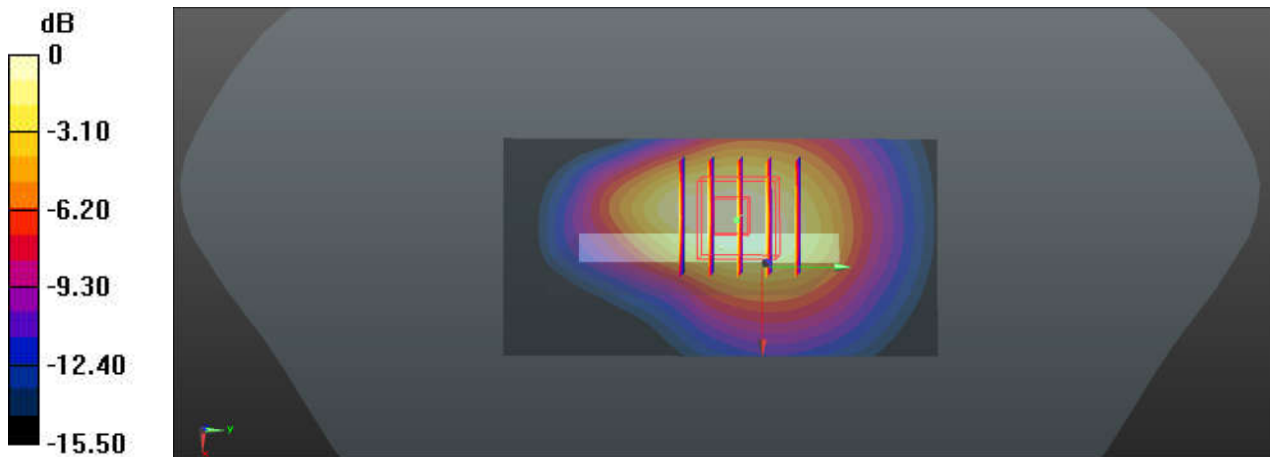
Ch18900/Zoom Scan (5x5x7)/Cube 0: Measurement grid: dx=8mm, dy=8mm, dz=5mm

Reference Value = 20.12 V/m; Power Drift = -0.08 dB

Peak SAR (extrapolated) = 0.829 W/kg

SAR(1 g) = 0.501 W/kg; SAR(10 g) = 0.303 W/kg

Maximum value of SAR (measured) = 0.698 W/kg



0 dB = 0.698 W/kg

27_LTE Band 7_20M_QPSK_1RB_49Offset_Back_10mm_Ch21100

Communication System: UID 0, Generic LTE (0); Frequency: 2535 MHz; Duty Cycle: 1:1
 Medium: HSL_2600_220708 Medium parameters used: $f = 2535$ MHz; $\sigma = 1.866$ S/m; $\epsilon_r = 39.122$;
 $\rho = 1000$ kg/m³
 Ambient Temperature : 23.3 °C; Liquid Temperature : 22.2 °C

DASY5 Configuration:

- Probe: EX3DV4 - SN3819; ConvF(7.39, 7.39, 7.39); Calibrated: 2022/5/30
- Sensor-Surface: 1.4mm (Mechanical Surface Detection)
- Electronics: DAE4 Sn715; Calibrated: 2021/12/29
- Phantom: SAM (30deg probe tilt) with CRP v4.0; Type: QD000P40CC; Serial: TP: 1500
- Measurement SW: DASY52, Version 52.10 (3); SEMCAD X Version 14.6.13 (7474)

Ch21100/Area Scan (91x91x1): Interpolated grid: dx=1.200 mm, dy=1.200 mm

Maximum value of SAR (interpolated) = 0.582 W/kg

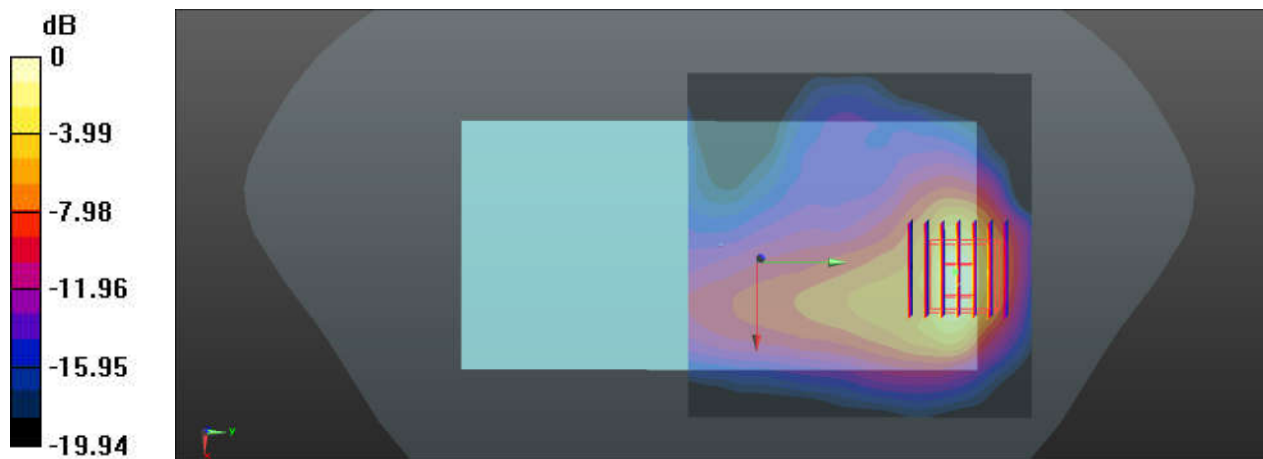
Ch21100/Zoom Scan (7x7x7)/Cube 0: Measurement grid: dx=5mm, dy=5mm, dz=5mm

Reference Value = 4.166 V/m; Power Drift = -0.03 dB

Peak SAR (extrapolated) = 0.772 W/kg

SAR(1 g) = 0.377 W/kg; SAR(10 g) = 0.174 W/kg

Maximum value of SAR (measured) = 0.618 W/kg



0 dB = 0.618 W/kg

28_LTE Band 38_20M_QPSK_1RB_49Offset_Back_10mm_Ch38000

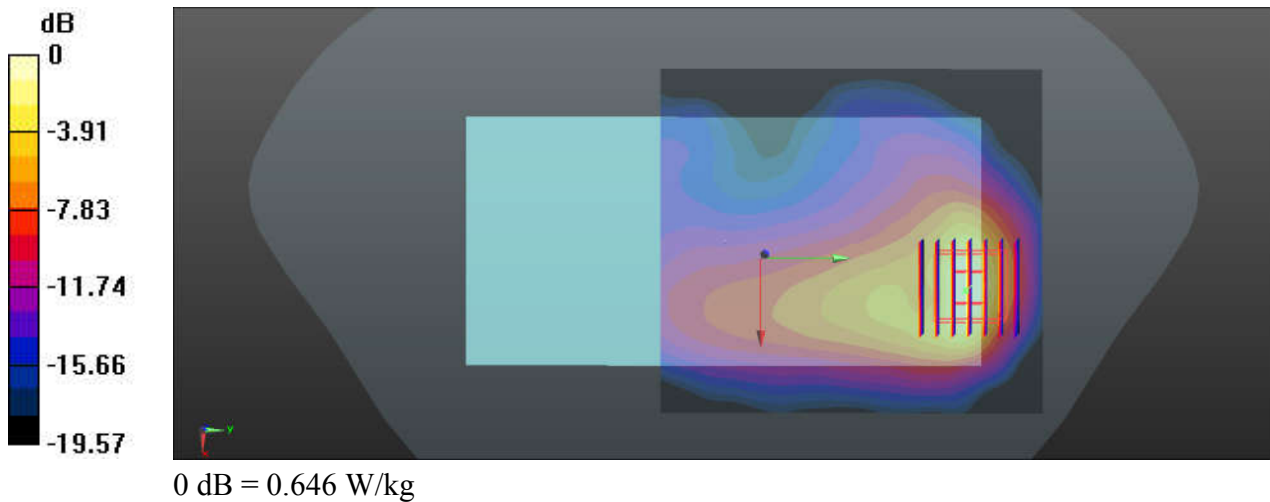
Communication System: UID 0, Generic LTE (0); Frequency: 2595 MHz; Duty Cycle: 1:1.59
 Medium: HSL_2600_220708 Medium parameters used: $f = 2595$ MHz; $\sigma = 1.929$ S/m; $\epsilon_r = 38.827$;
 $\rho = 1000$ kg/m³
 Ambient Temperature : 23.3 °C; Liquid Temperature : 22.2 °C

DASY5 Configuration:

- Probe: EX3DV4 - SN3819; ConvF(7.39, 7.39, 7.39); Calibrated: 2022/5/30
- Sensor-Surface: 1.4mm (Mechanical Surface Detection)
- Electronics: DAE4 Sn715; Calibrated: 2021/12/29
- Phantom: SAM (30deg probe tilt) with CRP v4.0; Type: QD000P40CC; Serial: TP: 1500
- Measurement SW: DASY52, Version 52.10 (3); SEMCAD X Version 14.6.13 (7474)

Ch38000/Area Scan (91x101x1): Interpolated grid: dx=1.200 mm, dy=1.200 mm
 Maximum value of SAR (interpolated) = 0.655 W/kg

Ch38000/Zoom Scan (7x7x7)/Cube 0: Measurement grid: dx=5mm, dy=5mm, dz=5mm
 Reference Value = 4.612 V/m; Power Drift = 0.02 dB
 Peak SAR (extrapolated) = 0.792 W/kg
SAR(1 g) = 0.388 W/kg; SAR(10 g) = 0.180 W/kg
 Maximum value of SAR (measured) = 0.646 W/kg



29_LTE Band 41_20M_QPSK_1RB_49Offset_Back_10mm_Ch41140

Communication System: UID 0, Generic LTE (0); Frequency: 2645 MHz; Duty Cycle: 1:1.59
 Medium: HSL_2600_220708 Medium parameters used: $f = 2645$ MHz; $\sigma = 1.978$ S/m; $\epsilon_r = 38.738$;
 $\rho = 1000$ kg/m³
 Ambient Temperature : 23.3 °C; Liquid Temperature : 22.2 °C

DASY5 Configuration:

- Probe: EX3DV4 - SN3819; ConvF(7.39, 7.39, 7.39); Calibrated: 2022/5/30
- Sensor-Surface: 1.4mm (Mechanical Surface Detection)
- Electronics: DAE4 Sn715; Calibrated: 2021/12/29
- Phantom: SAM (30deg probe tilt) with CRP v4.0; Type: QD000P40CC; Serial: TP: 1500
- Measurement SW: DASY52, Version 52.10 (3); SEMCAD X Version 14.6.13 (7474)

Ch41140/Area Scan (91x91x1): Interpolated grid: dx=1.200 mm, dy=1.200 mm

Maximum value of SAR (interpolated) = 0.537 W/kg

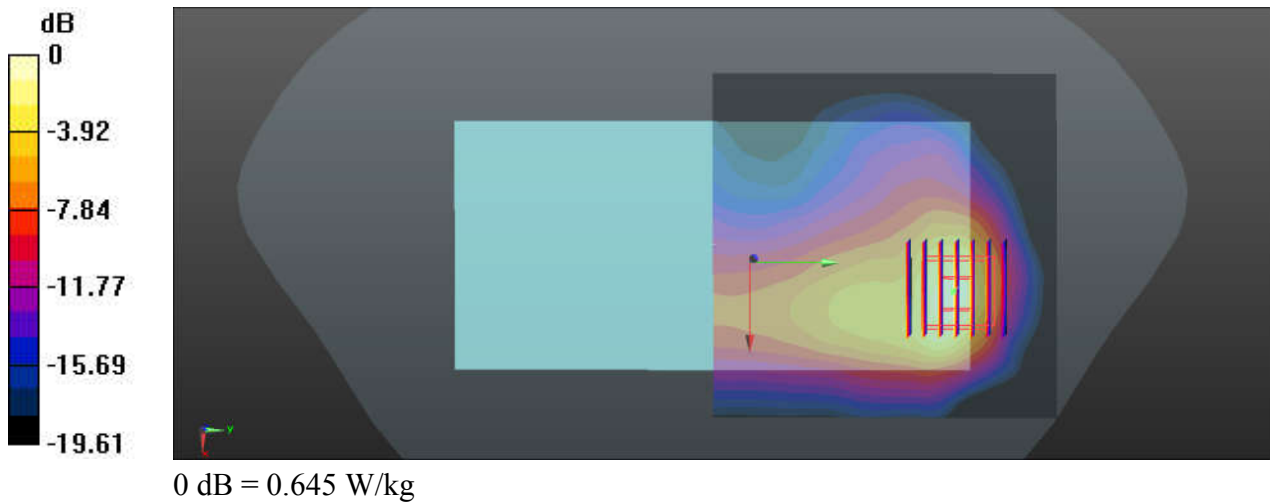
Ch41140/Zoom Scan (7x7x7)/Cube 0: Measurement grid: dx=5mm, dy=5mm, dz=5mm

Reference Value = 5.262 V/m; Power Drift = -0.15 dB

Peak SAR (extrapolated) = 0.800 W/kg

SAR(1 g) = 0.387 W/kg; SAR(10 g) = 0.179 W/kg

Maximum value of SAR (measured) = 0.645 W/kg



30_Bluetooth_DH5 1Mbps_Back_10mm_Ch39

Communication System: UID 0, BT (0); Frequency: 2441 MHz; Duty Cycle: 1:1.302
 Medium: HSL_2450_220712 Medium parameters used: $f = 2441$ MHz; $\sigma = 1.861$ S/m; $\epsilon_r = 38.158$;
 $\rho = 1000$ kg/m³
 Ambient Temperature : 23.3 °C; Liquid Temperature : 22.6 °C

DASY5 Configuration:

- Probe: EX3DV4 - SN3819; ConvF(7.57, 7.57, 7.57); Calibrated: 2022/5/30
- Sensor-Surface: 1.4mm (Mechanical Surface Detection)
- Electronics: DAE4 Sn715; Calibrated: 2021/12/29
- Phantom: SAM (30deg probe tilt) with CRP v4.0; Type: QD000P40CC; Serial: TP: 1500
- Measurement SW: DASY52, Version 52.10 (3); SEMCAD X Version 14.6.13 (7474)

Ch39/Area Scan (91x91x1): Interpolated grid: dx=1.200 mm, dy=1.200 mm

Maximum value of SAR (interpolated) = 0.0873 W/kg

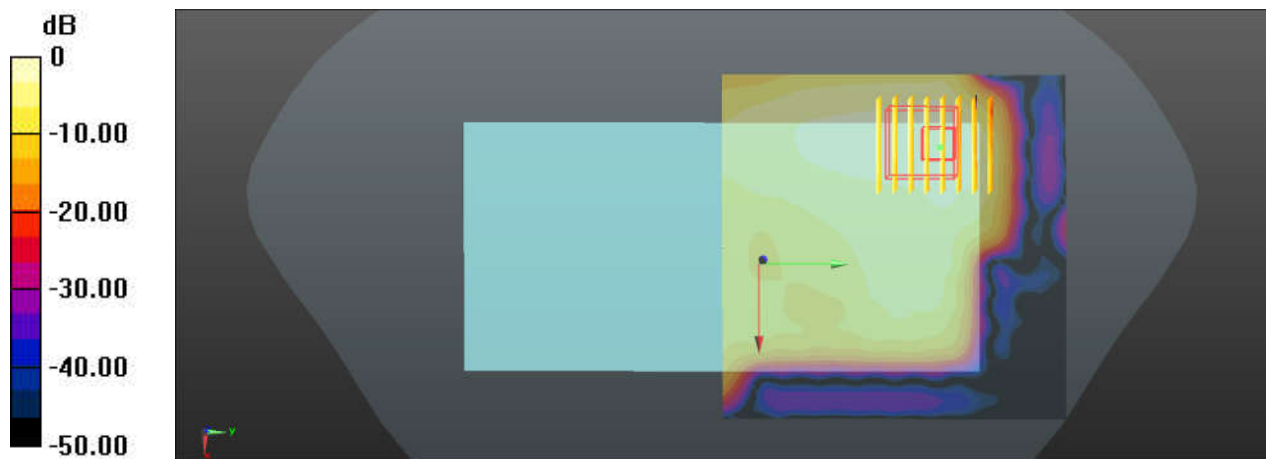
Ch39/Zoom Scan (7x8x7)/Cube 0: Measurement grid: dx=5mm, dy=5mm, dz=5mm

Reference Value = 2.155 V/m; Power Drift = 0.05 dB

Peak SAR (extrapolated) = 0.0950 W/kg

SAR(1 g) = 0.047 W/kg; SAR(10 g) = 0.025 W/kg

Maximum value of SAR (measured) = 0.0747 W/kg



0 dB = 0.0747 W/kg

31_WLAN2.4GHz_802.11b 6Mbps_Back_10mm_Ch1

Communication System: UID 0, WIFI (0); Frequency: 2412 MHz; Duty Cycle: 1:1.007
 Medium: HSL_2450_220712 Medium parameters used: $f = 2412$ MHz; $\sigma = 1.827$ S/m; $\epsilon_r = 38.256$;
 $\rho = 1000$ kg/m³
 Ambient Temperature : 23.3 °C; Liquid Temperature : 22.6 °C

DASY5 Configuration:

- Probe: EX3DV4 - SN3819; ConvF(7.57, 7.57, 7.57); Calibrated: 2022/5/30
- Sensor-Surface: 1.4mm (Mechanical Surface Detection)
- Electronics: DAE4 Sn715; Calibrated: 2021/12/29
- Phantom: SAM (30deg probe tilt) with CRP v4.0; Type: QD000P40CC; Serial: TP: 1500
- Measurement SW: DASY52, Version 52.10 (3); SEMCAD X Version 14.6.13 (7474)

Ch1/Area Scan (91x91x1): Interpolated grid: dx=1.200 mm, dy=1.200 mm

Maximum value of SAR (interpolated) = 0.318 W/kg

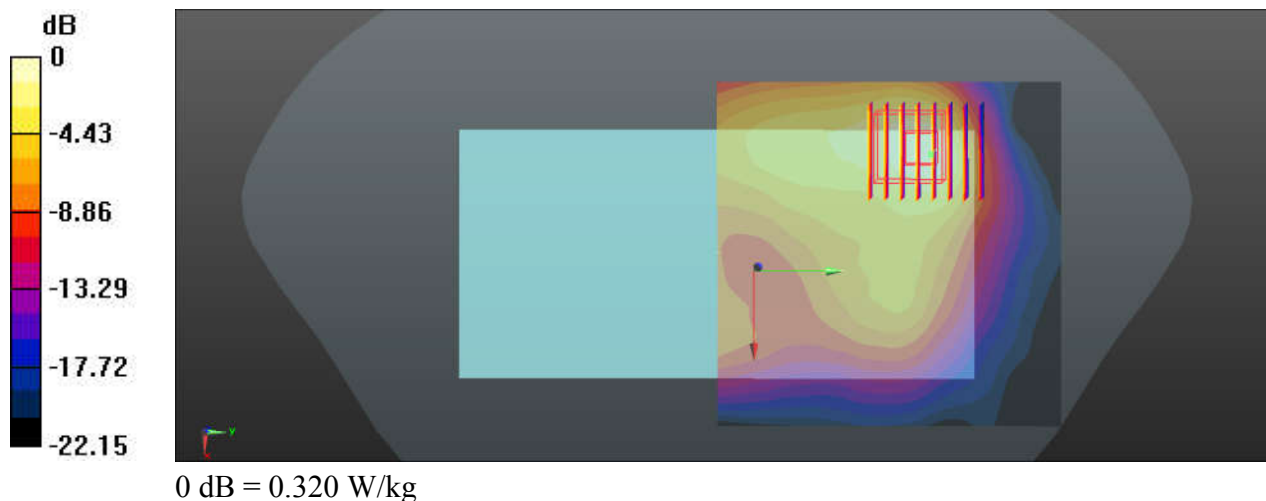
Ch1/Zoom Scan (7x8x7)/Cube 0: Measurement grid: dx=5mm, dy=5mm, dz=5mm

Reference Value = 4.904 V/m; Power Drift = 0.02 dB

Peak SAR (extrapolated) = 0.410 W/kg

SAR(1 g) = 0.205 W/kg; SAR(10 g) = 0.107 W/kg

Maximum value of SAR (measured) = 0.320 W/kg



32_WLAN5GHz_802.11ac-VHT80 MCS0_Back_10mm_Ch42

Communication System: UID 0, WIFI (0); Frequency: 5210 MHz; Duty Cycle: 1:1.138

Medium: HSL_5250_220710 Medium parameters used: $f = 5210$ MHz; $\sigma = 4.696$ S/m; $\epsilon_r = 36.95$; $\rho = 1000$ kg/m³

Ambient Temperature : 23.4 °C; Liquid Temperature : 22.5 °C

DASY5 Configuration:

- Probe: EX3DV4 - SN3819; ConvF(5.07, 5.07, 5.07); Calibrated: 2022/5/30
- Sensor-Surface: 1.4mm (Mechanical Surface Detection)
- Electronics: DAE4 Sn715; Calibrated: 2021/12/29
- Phantom: SAM (30deg probe tilt) with CRP v4.0; Type: QD000P40CC; Serial: TP: 1500
- Measurement SW: DASY52, Version 52.10 (3); SEMCAD X Version 14.6.13 (7474)

Ch42/Area Scan (111x101x1): Interpolated grid: dx=1.000 mm, dy=1.000 mm

Maximum value of SAR (interpolated) = 0.892 W/kg

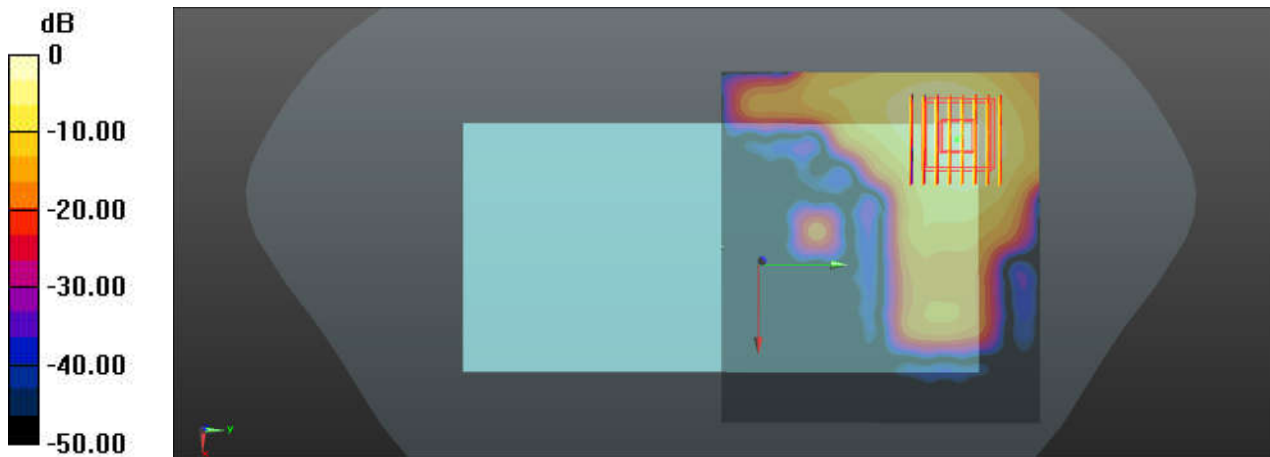
Ch42/Zoom Scan (8x8x7)/Cube 0: Measurement grid: dx=4mm, dy=4mm, dz=1.4mm

Reference Value = 0 V/m; Power Drift = 0.02 dB

Peak SAR (extrapolated) = 1.28 W/kg

SAR(1 g) = 0.454 W/kg; SAR(10 g) = 0.162 W/kg

Maximum value of SAR (measured) = 0.925 W/kg



0 dB = 0.925 W/kg

33_WLAN5GHz_802.11a 6Mbps_Back_10mm_Ch149

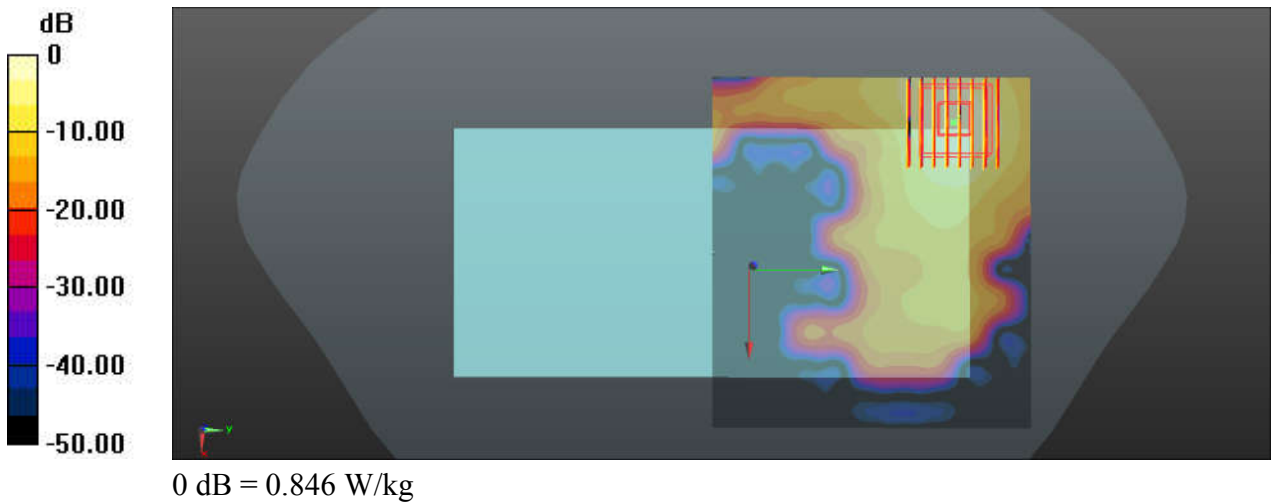
Communication System: UID 0, WIFI (0); Frequency: 5745 MHz; Duty Cycle: 1:1.032
 Medium: HSL_5750_220711 Medium parameters used: $f = 5745$ MHz; $\sigma = 5.252$ S/m; $\epsilon_r = 35.824$;
 $\rho = 1000$ kg/m³
 Ambient Temperature : 23.4 °C; Liquid Temperature : 22.3 °C

DASY5 Configuration:

- Probe: EX3DV4 - SN3819; ConvF(4.65, 4.65, 4.65); Calibrated: 2022/5/30
- Sensor-Surface: 1.4mm (Mechanical Surface Detection)
- Electronics: DAE4 Sn715; Calibrated: 2021/12/29
- Phantom: SAM (30deg probe tilt) with CRP v4.0; Type: QD000P40CC; Serial: TP: 1500
- Measurement SW: DASY52, Version 52.10 (3); SEMCAD X Version 14.6.13 (7474)

Ch149/Area Scan (111x101x1): Interpolated grid: dx=1.000 mm, dy=1.000 mm
 Maximum value of SAR (interpolated) = 0.856 W/kg

Ch149/Zoom Scan (8x8x7)/Cube 0: Measurement grid: dx=4mm, dy=4mm, dz=1.4mm
 Reference Value = 0 V/m; Power Drift = 0.04 dB
 Peak SAR (extrapolated) = 1.29 W/kg
SAR(1 g) = 0.383 W/kg; SAR(10 g) = 0.135 W/kg
 Maximum value of SAR (measured) = 0.846 W/kg



34_LTE Band 13_10M_QPSK_1RB_0Offset_Back_15mm_Ch23230

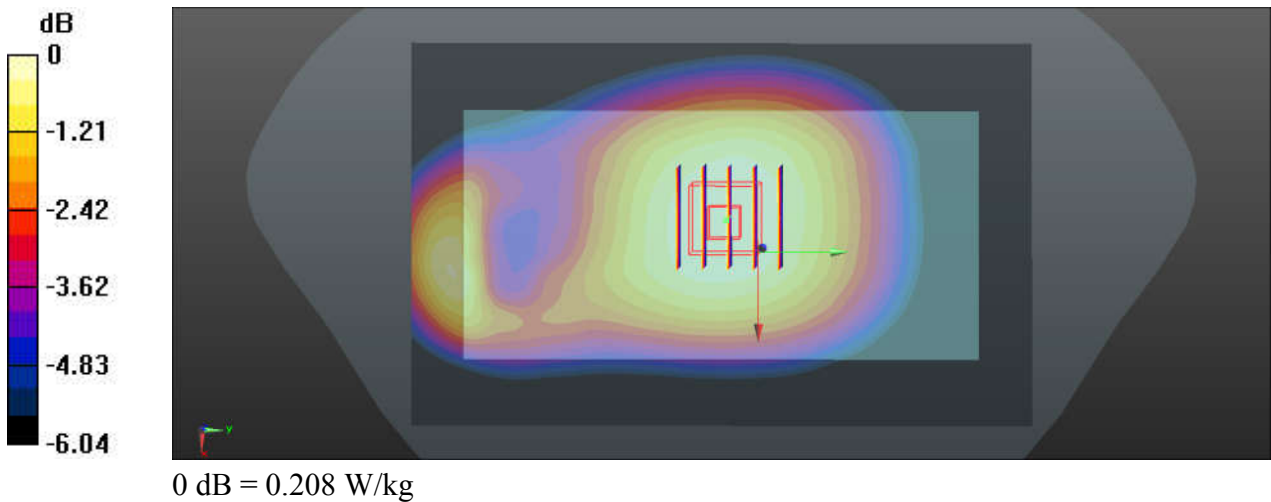
Communication System: UID 0, Generic LTE (0); Frequency: 782 MHz; Duty Cycle: 1:1
 Medium: HSL_750_220702 Medium parameters used: $f = 782$ MHz; $\sigma = 0.901$ S/m; $\epsilon_r = 40.08$; $\rho = 1000$ kg/m³
 Ambient Temperature : 23.2 °C; Liquid Temperature : 22.5 °C

DASY5 Configuration:

- Probe: EX3DV4 - SN3819; ConvF(9.82, 9.82, 9.82); Calibrated: 2022/5/30
- Sensor-Surface: 1.4mm (Mechanical Surface Detection)
- Electronics: DAE4 Sn715; Calibrated: 2021/12/29
- Phantom: SAM (30deg probe tilt) with CRP v4.0; Type: QD000P40CC; Serial: TP: 1500
- Measurement SW: DASY52, Version 52.10 (3); SEMCAD X Version 14.6.13 (7474)

Ch23230/Area Scan (81x131x1): Interpolated grid: dx=1.500 mm, dy=1.500 mm
 Maximum value of SAR (interpolated) = 0.210 W/kg

Ch23230/Zoom Scan (5x5x7)/Cube 0: Measurement grid: dx=8mm, dy=8mm, dz=5mm
 Reference Value = 16.04 V/m; Power Drift = -0.04 dB
 Peak SAR (extrapolated) = 0.222 W/kg
SAR(1 g) = 0.180 W/kg; SAR(10 g) = 0.145 W/kg
 Maximum value of SAR (measured) = 0.208 W/kg



35_GSM850_GPRS 4 Tx slots_Back_15mm_Ch189

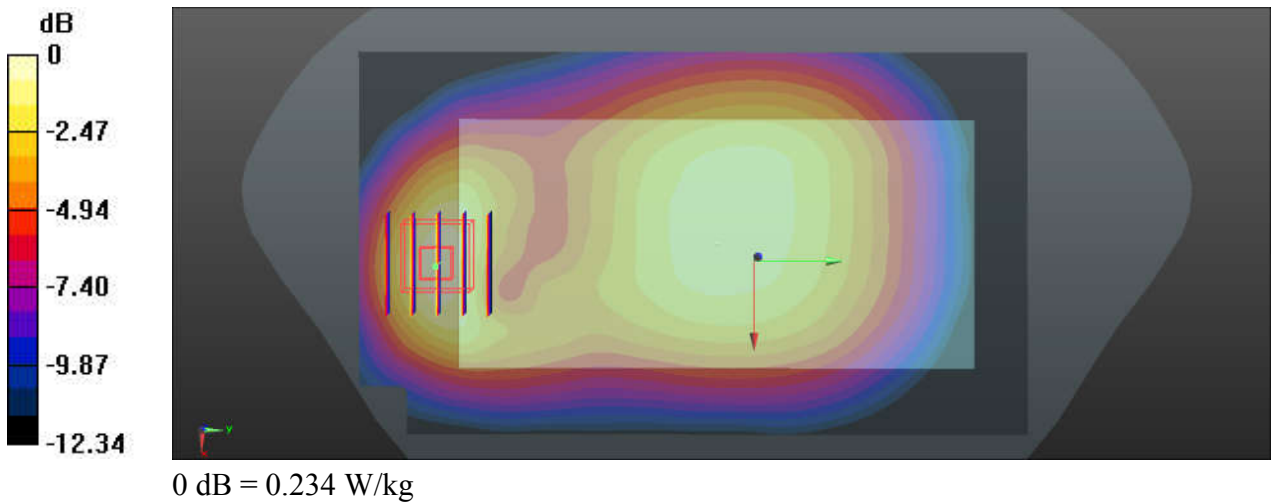
Communication System: UID 0, GPRS/EDGE12 (0); Frequency: 836.4 MHz; Duty Cycle: 1:2.08
 Medium: HSL_835_220703 Medium parameters used: $f = 836.4$ MHz; $\sigma = 0.914$ S/m; $\epsilon_r = 40.842$;
 $\rho = 1000$ kg/m³
 Ambient Temperature : 23.4 °C; Liquid Temperature : 22.3 °C

DASY5 Configuration:

- Probe: EX3DV4 - SN3819; ConvF(9.51, 9.51, 9.51); Calibrated: 2022/5/30
- Sensor-Surface: 1.4mm (Mechanical Surface Detection)
- Electronics: DAE4 Sn715; Calibrated: 2021/12/29
- Phantom: SAM (30deg probe tilt) with CRP v4.0; Type: QD000P40CC; Serial: TP: 1500
- Measurement SW: DASY52, Version 52.10 (3); SEMCAD X Version 14.6.13 (7474)

Ch189/Area Scan (81x141x1): Interpolated grid: dx=1.500 mm, dy=1.500 mm
 Maximum value of SAR (interpolated) = 0.224 W/kg

Ch189/Zoom Scan (5x5x7)/Cube 0: Measurement grid: dx=8mm, dy=8mm, dz=5mm
 Reference Value = 14.68 V/m; Power Drift = 0.09 dB
 Peak SAR (extrapolated) = 0.272 W/kg
SAR(1 g) = 0.165 W/kg; SAR(10 g) = 0.101 W/kg
 Maximum value of SAR (measured) = 0.234 W/kg



36_WCDMA V_RMC 12.2Kbps_Back_15mm_Ch4182

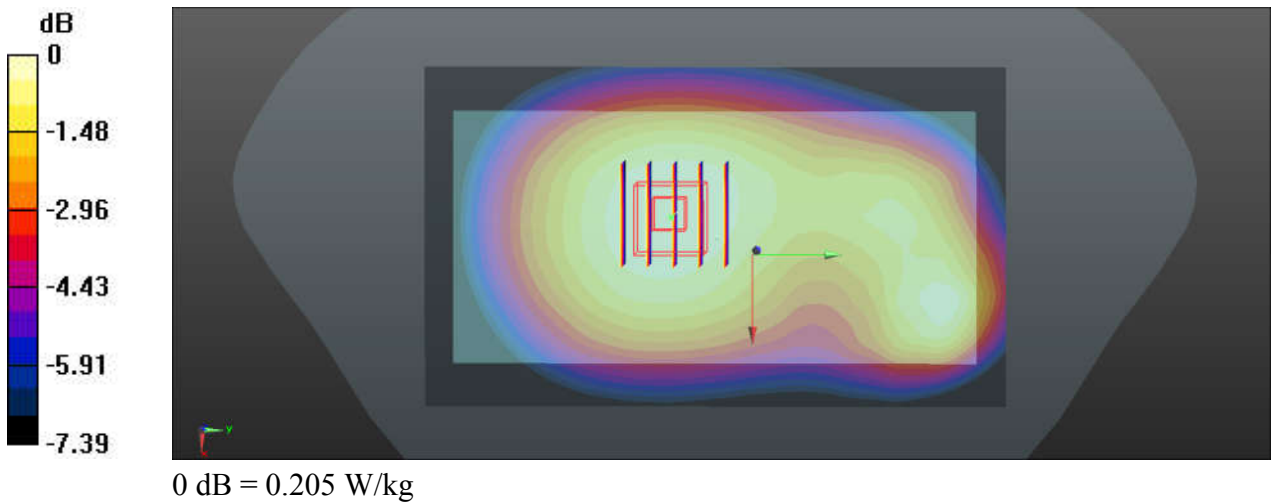
Communication System: UID 0, UMTS (0); Frequency: 836.4 MHz; Duty Cycle: 1:1
 Medium: HSL_835_220703 Medium parameters used: $f = 836.4$ MHz; $\sigma = 0.914$ S/m; $\epsilon_r = 40.842$;
 $\rho = 1000$ kg/m³
 Ambient Temperature : 23.4 °C; Liquid Temperature : 22.3 °C

DASY5 Configuration:

- Probe: EX3DV4 - SN3819; ConvF(9.51, 9.51, 9.51); Calibrated: 2022/5/30
- Sensor-Surface: 1.4mm (Mechanical Surface Detection)
- Electronics: DAE4 Sn715; Calibrated: 2021/12/29
- Phantom: SAM (30deg probe tilt) with CRP v4.0; Type: QD000P40CC; Serial: TP: 1500
- Measurement SW: DASY52, Version 52.10 (3); SEMCAD X Version 14.6.13 (7474)

Ch4182/Area Scan (71x121x1): Interpolated grid: dx=1.500 mm, dy=1.500 mm
 Maximum value of SAR (interpolated) = 0.207 W/kg

Ch4182/Zoom Scan (5x5x7)/Cube 0: Measurement grid: dx=8mm, dy=8mm, dz=5mm
 Reference Value = 15.00 V/m; Power Drift = -0.04 dB
 Peak SAR (extrapolated) = 0.228 W/kg
SAR(1 g) = 0.168 W/kg; SAR(10 g) = 0.129 W/kg
 Maximum value of SAR (measured) = 0.205 W/kg



37_LTE Band 26_15M_QPSK_1RB_37Offset_Back_15mm_Ch26865

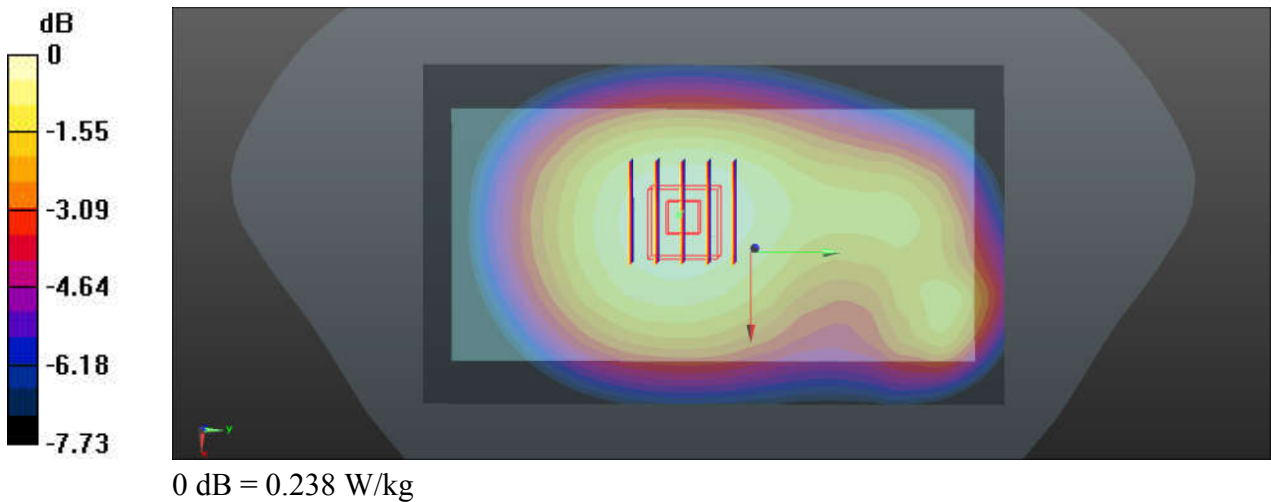
Communication System: UID 0, LTE (0); Frequency: 831.5 MHz; Duty Cycle: 1:1
 Medium: HSL_835_220703 Medium parameters used: $f = 831.5$ MHz; $\sigma = 0.91$ S/m; $\epsilon_r = 40.896$; $\rho = 1000$ kg/m³
 Ambient Temperature : 23.4 °C; Liquid Temperature : 22.3 °C

DASY5 Configuration:

- Probe: EX3DV4 - SN3819; ConvF(9.51, 9.51, 9.51); Calibrated: 2022/5/30
- Sensor-Surface: 1.4mm (Mechanical Surface Detection)
- Electronics: DAE4 Sn715; Calibrated: 2021/12/29
- Phantom: SAM (30deg probe tilt) with CRP v4.0; Type: QD000P40CC; Serial: TP: 1500
- Measurement SW: DASY52, Version 52.10 (3); SEMCAD X Version 14.6.13 (7474)

Ch26865/Area Scan (71x121x1): Interpolated grid: dx=1.500 mm, dy=1.500 mm
 Maximum value of SAR (interpolated) = 0.239 W/kg

Ch26865/Zoom Scan (5x5x7)/Cube 0: Measurement grid: dx=8mm, dy=8mm, dz=5mm
 Reference Value = 2.536 V/m; Power Drift = 0.04 dB
 Peak SAR (extrapolated) = 0.265 W/kg
SAR(1 g) = 0.194 W/kg; SAR(10 g) = 0.150 W/kg
 Maximum value of SAR (measured) = 0.238 W/kg



38_WCDMA IV_RMC 12.2Kbps_Back_15mm_Ch1413

Communication System: UID 0, UMTS (0); Frequency: 1732.6 MHz; Duty Cycle: 1:1
 Medium: HSL_1750_220705 Medium parameters used: $f = 1732.6$ MHz; $\sigma = 1.387$ S/m; $\epsilon_r = 41.785$; $\rho = 1000$ kg/m³
 Ambient Temperature : 23.5 °C; Liquid Temperature : 22.7 °C

DASY5 Configuration:

- Probe: EX3DV4 - SN3819; ConvF(8.57, 8.57, 8.57); Calibrated: 2022/5/30
- Sensor-Surface: 1.4mm (Mechanical Surface Detection)
- Electronics: DAE4 Sn715; Calibrated: 2021/12/29
- Phantom: SAM (30deg probe tilt) with CRP v4.0; Type: QD000P40CC; Serial: TP: 1500
- Measurement SW: DASY52, Version 52.10 (3); SEMCAD X Version 14.6.13 (7474)

Ch1413/Area Scan (71x121x1): Interpolated grid: dx=1.500 mm, dy=1.500 mm

Maximum value of SAR (interpolated) = 0.737 W/kg

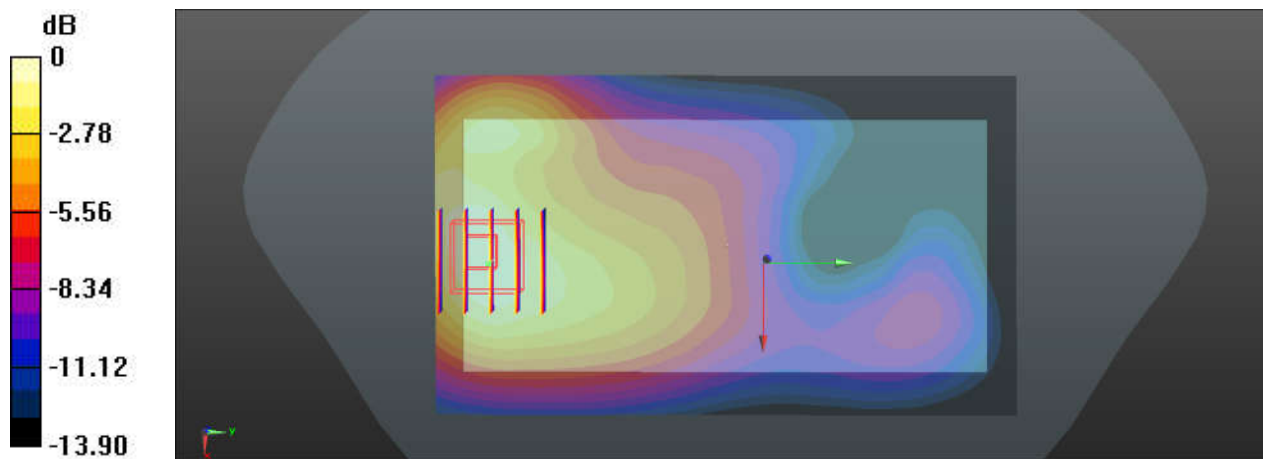
Ch1413/Zoom Scan (5x5x7)/Cube 0: Measurement grid: dx=8mm, dy=8mm, dz=5mm

Reference Value = 14.31 V/m; Power Drift = -0.13 dB

Peak SAR (extrapolated) = 0.845 W/kg

SAR(1 g) = 0.556 W/kg; SAR(10 g) = 0.357 W/kg

Maximum value of SAR (measured) = 0.725 W/kg



0 dB = 0.725 W/kg

39_LTE Band 66_20M_QPSK_1RB_49Offset_Back_15mm_Ch132322

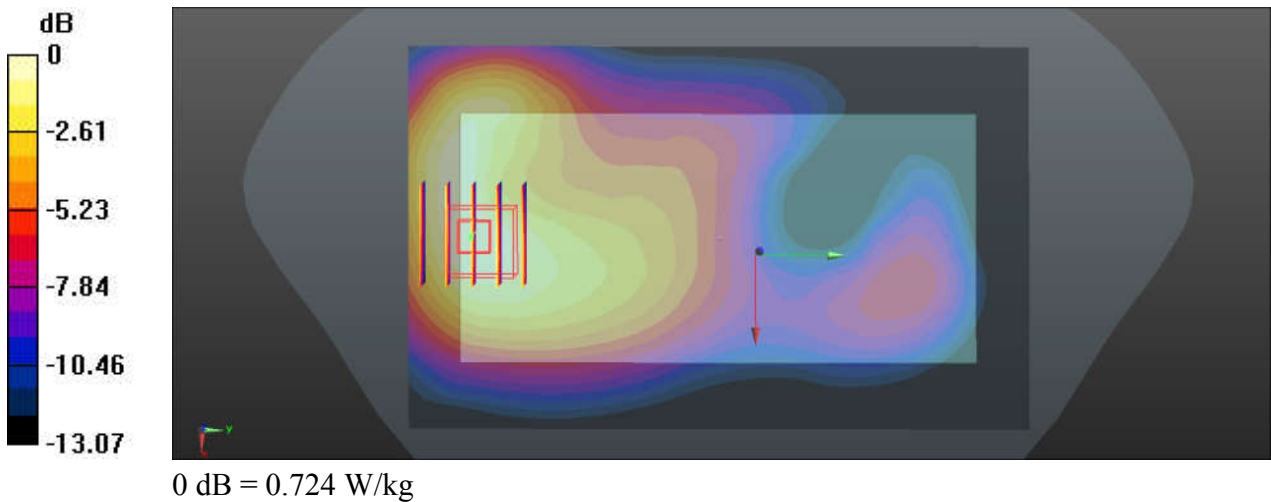
Communication System: UID 0, Generic LTE (0); Frequency: 1745 MHz; Duty Cycle: 1:1
 Medium: HSL_1750_220705 Medium parameters used: $f = 1745$ MHz; $\sigma = 1.401$ S/m; $\epsilon_r = 41.733$;
 $\rho = 1000$ kg/m³
 Ambient Temperature : 23.5 °C; Liquid Temperature : 22.7 °C

DASY5 Configuration:

- Probe: EX3DV4 - SN3819; ConvF(8.57, 8.57, 8.57); Calibrated: 2022/5/30
- Sensor-Surface: 1.4mm (Mechanical Surface Detection)
- Electronics: DAE4 Sn715; Calibrated: 2021/12/29
- Phantom: SAM (30deg probe tilt) with CRP v4.0; Type: QD000P40CC; Serial: TP: 1500
- Measurement SW: DASY52, Version 52.10 (3); SEMCAD X Version 14.6.13 (7474)

Ch132322/Area Scan (81x131x1): Interpolated grid: dx=1.500 mm, dy=1.500 mm
 Maximum value of SAR (interpolated) = 0.729 W/kg

Ch132322/Zoom Scan (5x5x7)/Cube 0: Measurement grid: dx=8mm, dy=8mm, dz=5mm
 Reference Value = 11.28 V/m; Power Drift = 0.11 dB
 Peak SAR (extrapolated) = 0.813 W/kg
SAR(1 g) = 0.556 W/kg; SAR(10 g) = 0.371 W/kg
 Maximum value of SAR (measured) = 0.724 W/kg



40_GSM1900_GPRS 4 Tx slots_Back_15mm_Ch661

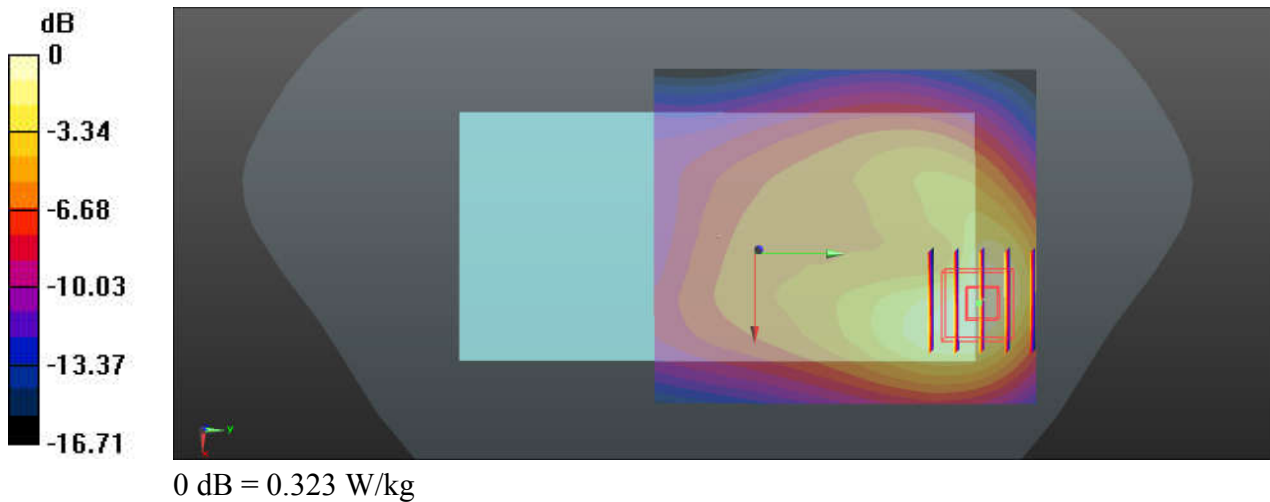
Communication System: UID 0, GPRS/EDGE12 (0); Frequency: 1880 MHz; Duty Cycle: 1:2.08
 Medium: HSL_1900_220704 Medium parameters used: $f = 1880$ MHz; $\sigma = 1.435$ S/m; $\epsilon_r = 40.161$;
 $\rho = 1000$ kg/m³
 Ambient Temperature : 23.4 °C; Liquid Temperature : 22.4 °C

DASY5 Configuration:

- Probe: EX3DV4 - SN3819; ConvF(8.32, 8.32, 8.32); Calibrated: 2022/5/30
- Sensor-Surface: 1.4mm (Mechanical Surface Detection)
- Electronics: DAE4 Sn715; Calibrated: 2021/12/29
- Phantom: SAM (30deg probe tilt) with CRP v4.0; Type: QD000P40CC; Serial: TP: 1500
- Measurement SW: DASY52, Version 52.10 (3); SEMCAD X Version 14.6.13 (7474)

Ch661/Area Scan (71x81x1): Interpolated grid: dx=1.500 mm, dy=1.500 mm
 Maximum value of SAR (interpolated) = 0.336 W/kg

Ch661/Zoom Scan (5x5x7)/Cube 0: Measurement grid: dx=8mm, dy=8mm, dz=5mm
 Reference Value = 2.348 V/m; Power Drift = 0.05 dB
 Peak SAR (extrapolated) = 0.376 W/kg
SAR(1 g) = 0.223 W/kg; SAR(10 g) = 0.129 W/kg
 Maximum value of SAR (measured) = 0.323 W/kg



41_WCDMA II_RMC 12.2Kbps_Back_15mm_Ch9400

Communication System: UID 0, UMTS (0); Frequency: 1880 MHz; Duty Cycle: 1:1
 Medium: HSL_1900_220704 Medium parameters used: $f = 1880$ MHz; $\sigma = 1.435$ S/m; $\epsilon_r = 40.161$;
 $\rho = 1000$ kg/m³
 Ambient Temperature : 23.4 °C; Liquid Temperature : 22.4 °C

DASY5 Configuration:

- Probe: EX3DV4 - SN3819; ConvF(8.32, 8.32, 8.32); Calibrated: 2022/5/30
- Sensor-Surface: 1.4mm (Mechanical Surface Detection)
- Electronics: DAE4 Sn715; Calibrated: 2021/12/29
- Phantom: SAM (30deg probe tilt) with CRP v4.0; Type: QD000P40CC; Serial: TP: 1500
- Measurement SW: DASY52, Version 52.10 (3); SEMCAD X Version 14.6.13 (7474)

Ch9400/Area Scan (71x121x1): Interpolated grid: dx=1.500 mm, dy=1.500 mm

Maximum value of SAR (interpolated) = 0.732 W/kg

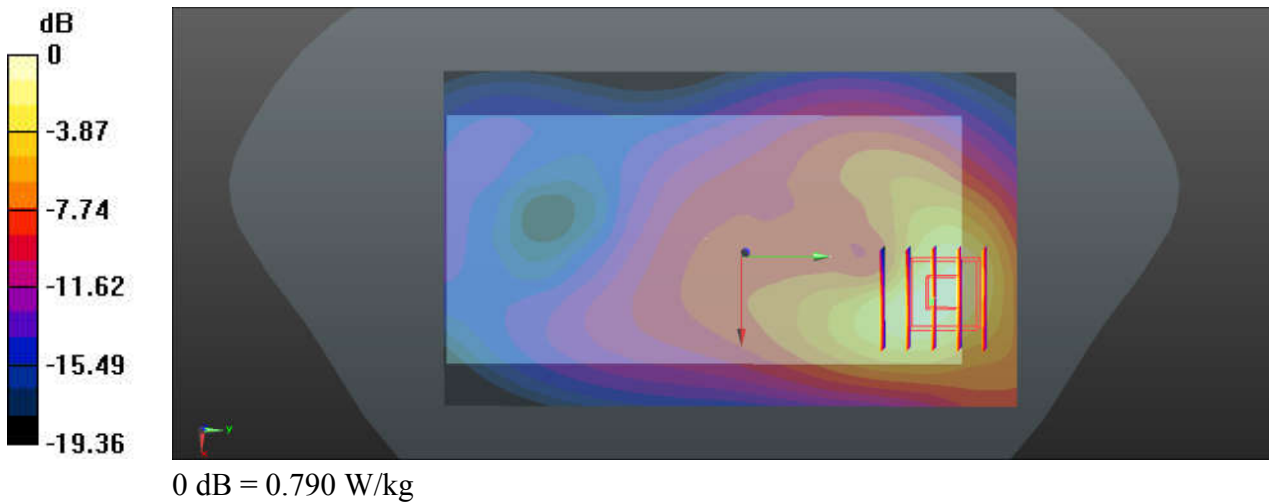
Ch9400/Zoom Scan (5x5x7)/Cube 0: Measurement grid: dx=8mm, dy=8mm, dz=5mm

Reference Value = 14.48 V/m; Power Drift = 0.10 dB

Peak SAR (extrapolated) = 0.965 W/kg

SAR(1 g) = 0.549 W/kg; SAR(10 g) = 0.299 W/kg

Maximum value of SAR (measured) = 0.790 W/kg



42_LTE Band 2_20M_QPSK_1RB_49Offset_Back_15mm_Ch18900

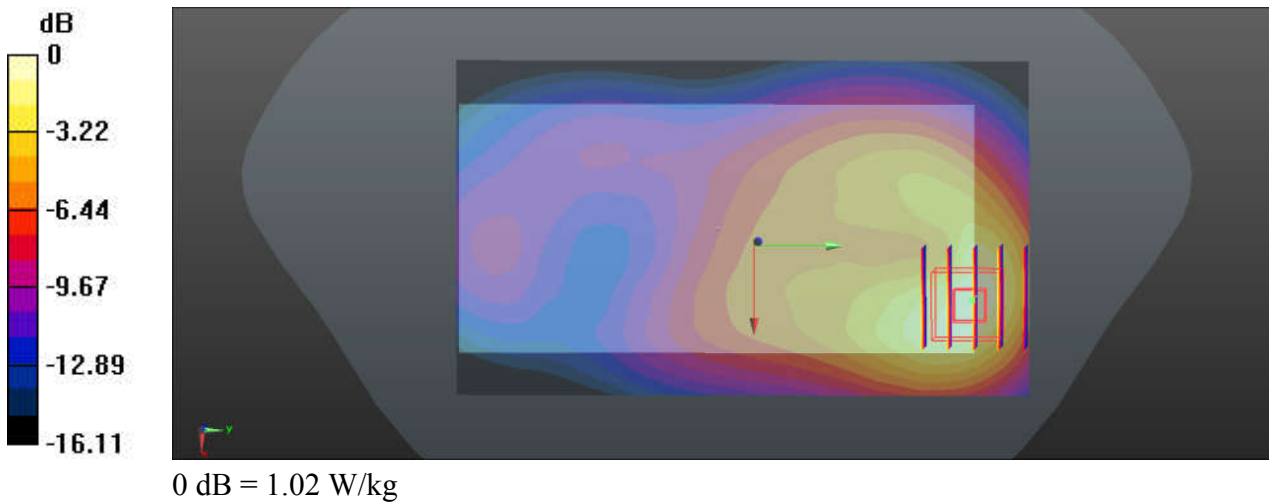
Communication System: UID 0, LTE (0); Frequency: 1880 MHz; Duty Cycle: 1:1
 Medium: HSL_1900_220704 Medium parameters used: $f = 1880$ MHz; $\sigma = 1.435$ S/m; $\epsilon_r = 40.161$;
 $\rho = 1000$ kg/m³
 Ambient Temperature : 23.4 °C; Liquid Temperature : 22.4 °C

DASY5 Configuration:

- Probe: EX3DV4 - SN3819; ConvF(8.32, 8.32, 8.32); Calibrated: 2022/5/30
- Sensor-Surface: 1.4mm (Mechanical Surface Detection)
- Electronics: DAE4 Sn715; Calibrated: 2021/12/29
- Phantom: SAM (30deg probe tilt) with CRP v4.0; Type: QD000P40CC; Serial: TP: 1500
- Measurement SW: DASY52, Version 52.10 (3); SEMCAD X Version 14.6.13 (7474)

Ch18900/Area Scan (71x121x1): Interpolated grid: dx=1.500 mm, dy=1.500 mm
 Maximum value of SAR (interpolated) = 1.03 W/kg

Ch18900/Zoom Scan (5x5x7)/Cube 0: Measurement grid: dx=8mm, dy=8mm, dz=5mm
 Reference Value = 2.489 V/m; Power Drift = 0.10 dB
 Peak SAR (extrapolated) = 1.20 W/kg
SAR(1 g) = 0.696 W/kg; SAR(10 g) = 0.398 W/kg
 Maximum value of SAR (measured) = 1.02 W/kg



43_LTE Band 7_20M_QPSK_1RB_49Offset_Back_15mm_Ch21100

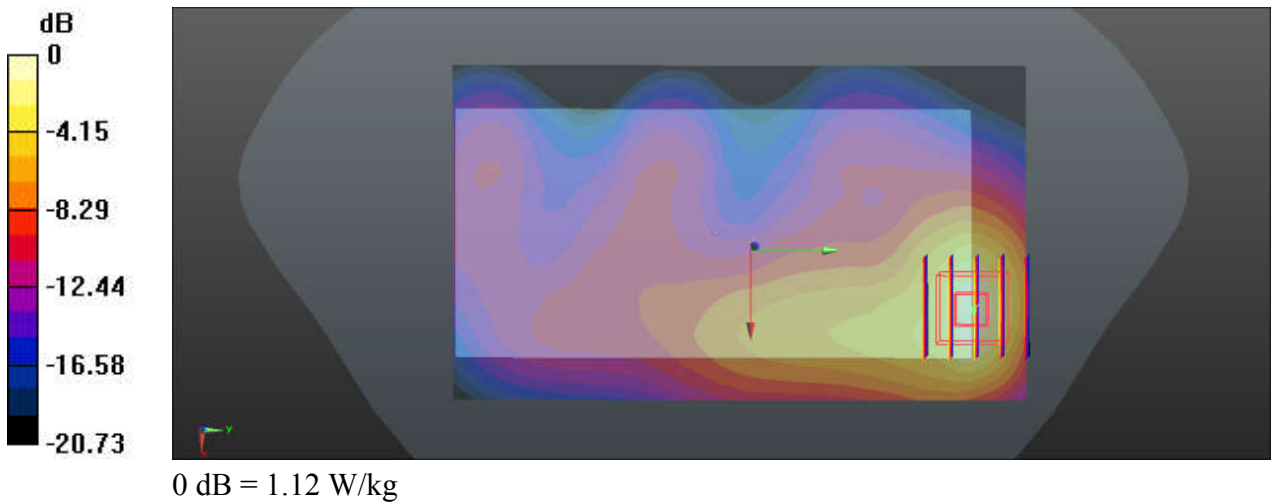
Communication System: UID 0, LTE (0); Frequency: 2535 MHz; Duty Cycle: 1:1
 Medium: HSL_2600_220708 Medium parameters used: $f = 2535$ MHz; $\sigma = 1.866$ S/m; $\epsilon_r = 39.122$;
 $\rho = 1000$ kg/m³
 Ambient Temperature : 23.3 °C; Liquid Temperature : 22.2 °C

DASY5 Configuration:

- Probe: EX3DV4 - SN3819; ConvF(7.39, 7.39, 7.39); Calibrated: 2022/5/30
- Sensor-Surface: 1.4mm (Mechanical Surface Detection)
- Electronics: DAE4 Sn715; Calibrated: 2021/12/29
- Phantom: SAM (30deg probe tilt) with CRP v4.0; Type: QD000P40CC; Serial: TP: 1500
- Measurement SW: DASY52, Version 52.10 (3); SEMCAD X Version 14.6.13 (7474)

Ch21100/Area Scan (71x121x1): Interpolated grid: dx=1.500 mm, dy=1.500 mm
 Maximum value of SAR (interpolated) = 1.09 W/kg

Ch21100/Zoom Scan (5x5x7)/Cube 0: Measurement grid: dx=8mm, dy=8mm, dz=5mm
 Reference Value = 2.527 V/m; Power Drift = 0.06 dB
 Peak SAR (extrapolated) = 1.35 W/kg
SAR(1 g) = 0.705 W/kg; SAR(10 g) = 0.351 W/kg
 Maximum value of SAR (measured) = 1.12 W/kg



44_LTE Band 38_20M_QPSK_1RB_49Offset_Back_15mm_Ch38000

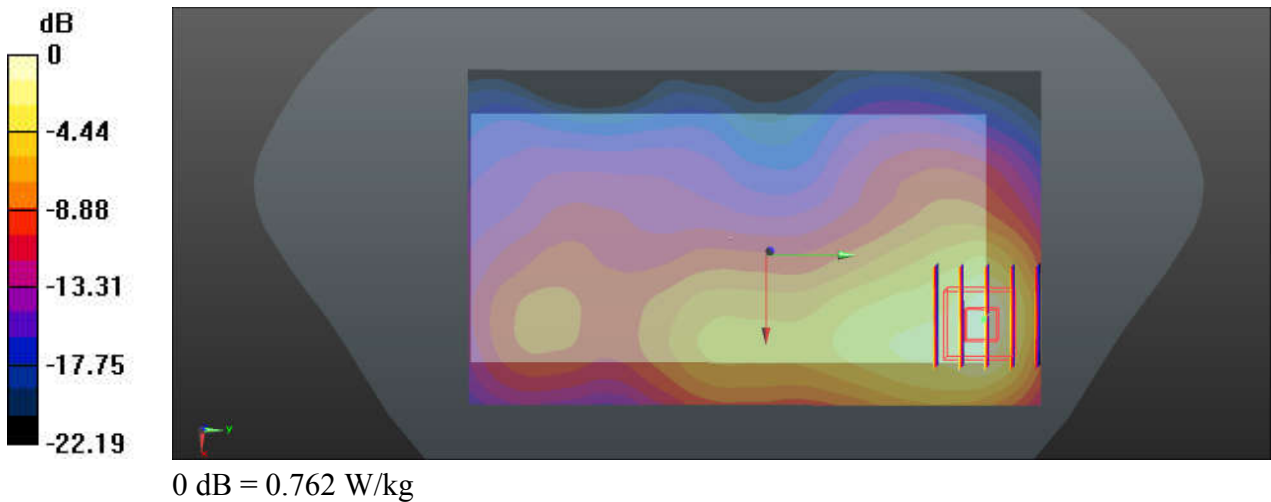
Communication System: UID 0, Generic LTE (0); Frequency: 2595 MHz; Duty Cycle: 1:1.59
 Medium: HSL_2600_220713 Medium parameters used: $f = 2595$ MHz; $\sigma = 1.929$ S/m; $\epsilon_r = 38.827$;
 $\rho = 1000$ kg/m³
 Ambient Temperature : 23.4 °C; Liquid Temperature : 22.7 °C

DASY5 Configuration:

- Probe: EX3DV4 - SN3819; ConvF(7.39, 7.39, 7.39); Calibrated: 2022/5/30
- Sensor-Surface: 1.4mm (Mechanical Surface Detection)
- Electronics: DAE4 Sn715; Calibrated: 2021/12/29
- Phantom: SAM (30deg probe tilt) with CRP v4.0; Type: QD000P40CC; Serial: TP: 1500
- Measurement SW: DASY52, Version 52.10 (3); SEMCAD X Version 14.6.13 (7474)

Ch38000/Area Scan (71x121x1): Interpolated grid: dx=1.500 mm, dy=1.500 mm
 Maximum value of SAR (interpolated) = 0.721 W/kg

Ch38000/Zoom Scan (5x5x7)/Cube 0: Measurement grid: dx=8mm, dy=8mm, dz=5mm
 Reference Value = 1.427V/m; Power Drift = -0.04 dB
 Peak SAR (extrapolated) = 0.955 W/kg
SAR(1 g) = 0.498 W/kg; SAR(10 g) = 0.248 W/kg
 Maximum value of SAR (measured) = 0.762 W/kg



45_LTE Band 41_20M_QPSK_1RB_49Offset_Back_15mm_Ch41140

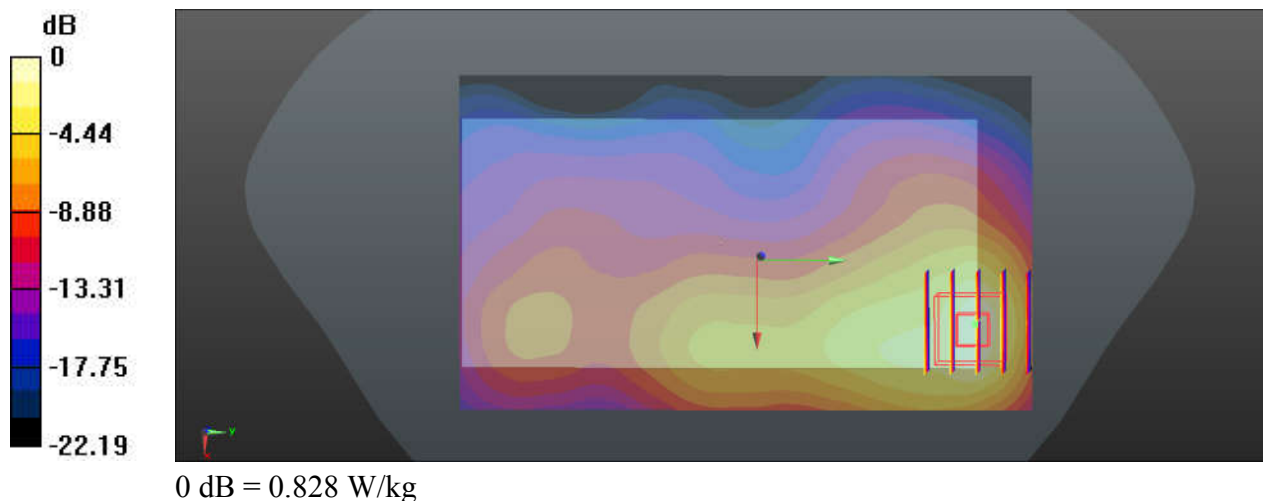
Communication System: UID 0, LTE (0); Frequency: 2645 MHz; Duty Cycle: 1:1.59
 Medium: HSL_2600_220708 Medium parameters used: $f = 2645$ MHz; $\sigma = 1.978$ S/m; $\epsilon_r = 38.738$;
 $\rho = 1000$ kg/m³
 Ambient Temperature : 23.3 °C; Liquid Temperature : 22.2 °C

DASY5 Configuration:

- Probe: EX3DV4 - SN3819; ConvF(7.39, 7.39, 7.39); Calibrated: 2022/5/30
- Sensor-Surface: 1.4mm (Mechanical Surface Detection)
- Electronics: DAE4 Sn715; Calibrated: 2021/12/29
- Phantom: SAM (30deg probe tilt) with CRP v4.0; Type: QD000P40CC; Serial: TP: 1500
- Measurement SW: DASY52, Version 52.10 (3); SEMCAD X Version 14.6.13 (7474)

Ch41140/Area Scan (71x121x1): Interpolated grid: dx=1.500 mm, dy=1.500 mm
 Maximum value of SAR (interpolated) = 0.785 W/kg

Ch41140/Zoom Scan (5x5x7)/Cube 0: Measurement grid: dx=8mm, dy=8mm, dz=5mm
 Reference Value = 1.521 V/m; Power Drift = 0.07 dB
 Peak SAR (extrapolated) = 1.01 W/kg
SAR(1 g) = 0.519 W/kg; SAR(10 g) = 0.258 W/kg
 Maximum value of SAR (measured) = 0.828 W/kg



46_Bluetooth_DH5 1Mbps_Back_15mm_Ch39

Communication System: UID 0, BT (0); Frequency: 2441 MHz; Duty Cycle: 1:1.302
Medium: HSL_2450_220712 Medium parameters used: $f = 2441$ MHz; $\sigma = 1.861$ S/m; $\epsilon_r = 38.158$;
 $\rho = 1000$ kg/m³
Ambient Temperature : 23.3 °C; Liquid Temperature : 22.6 °C

DASY5 Configuration:

- Probe: EX3DV4 - SN3819; ConvF(7.57, 7.57, 7.57); Calibrated: 2022/5/30
- Sensor-Surface: 1.4mm (Mechanical Surface Detection)
- Electronics: DAE4 Sn715; Calibrated: 2021/12/29
- Phantom: SAM (30deg probe tilt) with CRP v4.0; Type: QD000P40CC; Serial: TP: 1500
- Measurement SW: DASY52, Version 52.10 (3); SEMCAD X Version 14.6.13 (7474)

Ch39/Area Scan (91x91x1): Interpolated grid: dx=1.200 mm, dy=1.200 mm

Maximum value of SAR (interpolated) = 0.0291 W/kg

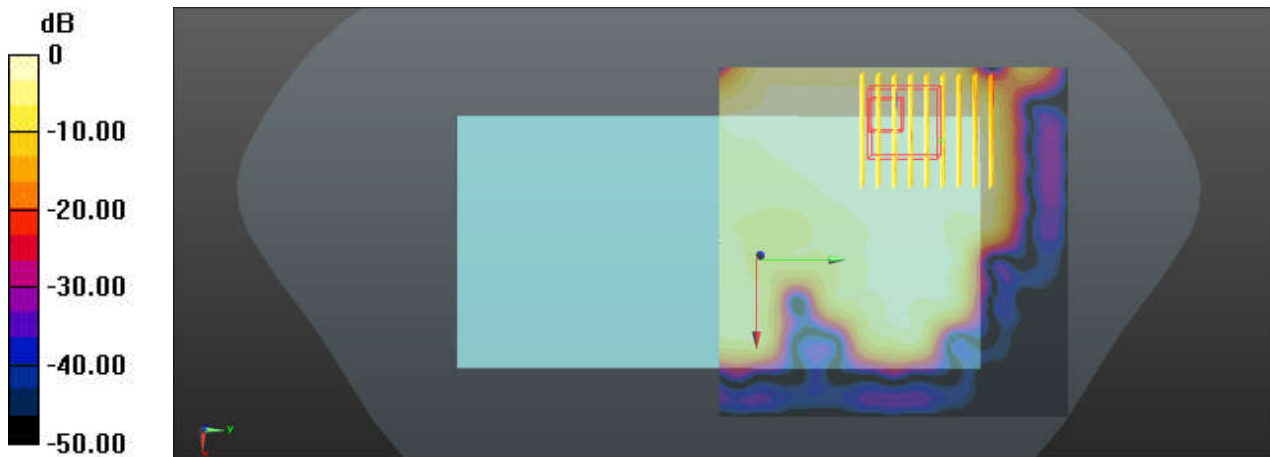
Ch39/Zoom Scan (8x9x7)/Cube 0: Measurement grid: dx=5mm, dy=5mm, dz=5mm

Reference Value = 1.468 V/m; Power Drift = 0.06 dB

Peak SAR (extrapolated) = 0.0520 W/kg

SAR(1 g) = 0.010 W/kg; SAR(10 g) = 0.00381 W/kg

Maximum value of SAR (measured) = 0.0250 W/kg



0 dB = 0.0250 W/kg

47_WLAN2.4GHz_802.11b 6Mbps_Back_15mm_Ch1

Communication System: UID 0, WIFI (0); Frequency: 2412 MHz; Duty Cycle: 1:1.007
Medium: HSL_2450_220712 Medium parameters used: $f = 2412$ MHz; $\sigma = 1.827$ S/m; $\epsilon_r = 38.256$;
 $\rho = 1000$ kg/m³
Ambient Temperature : 23.3 °C; Liquid Temperature : 22.6 °C

DASY5 Configuration:

- Probe: EX3DV4 - SN3819; ConvF(7.57, 7.57, 7.57); Calibrated: 2022/5/30
- Sensor-Surface: 1.4mm (Mechanical Surface Detection)
- Electronics: DAE4 Sn715; Calibrated: 2021/12/29
- Phantom: SAM (30deg probe tilt) with CRP v4.0; Type: QD000P40CC; Serial: TP: 1500
- Measurement SW: DASY52, Version 52.10 (3); SEMCAD X Version 14.6.13 (7474)

Ch1/Area Scan (91x101x1): Interpolated grid: dx=1.200 mm, dy=1.200 mm

Maximum value of SAR (interpolated) = 0.167 W/kg

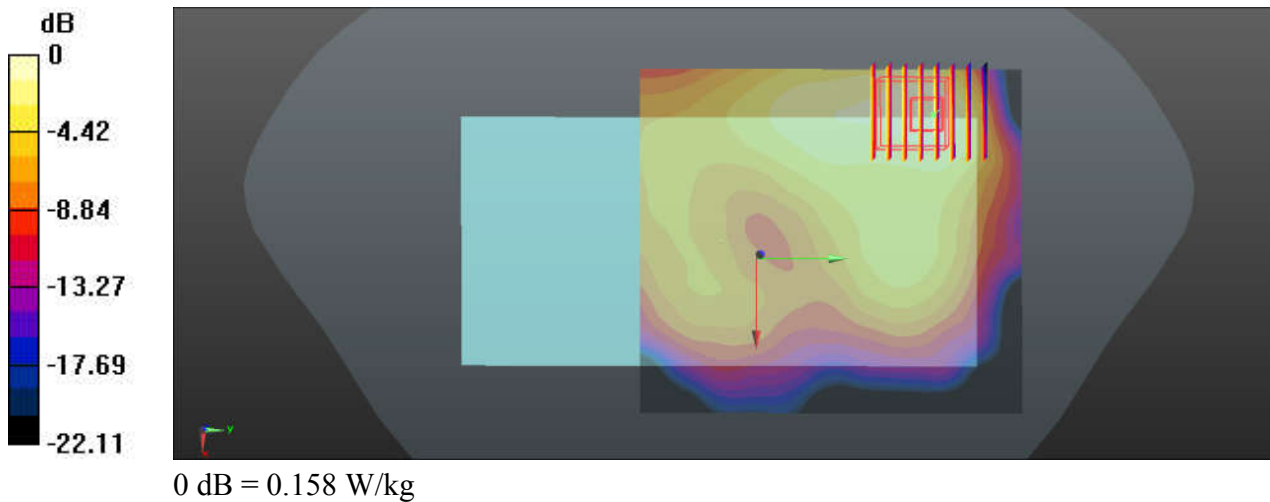
Ch1/Zoom Scan (7x8x7)/Cube 0: Measurement grid: dx=5mm, dy=5mm, dz=5mm

Reference Value = 4.413 V/m; Power Drift = 0.02 dB

Peak SAR (extrapolated) = 0.194 W/kg

SAR(1 g) = 0.099 W/kg; SAR(10 g) = 0.055 W/kg

Maximum value of SAR (measured) = 0.158 W/kg



48_WLAN5GHz_802.11ac-VHT80 MCS0_Back_15mm_Ch42

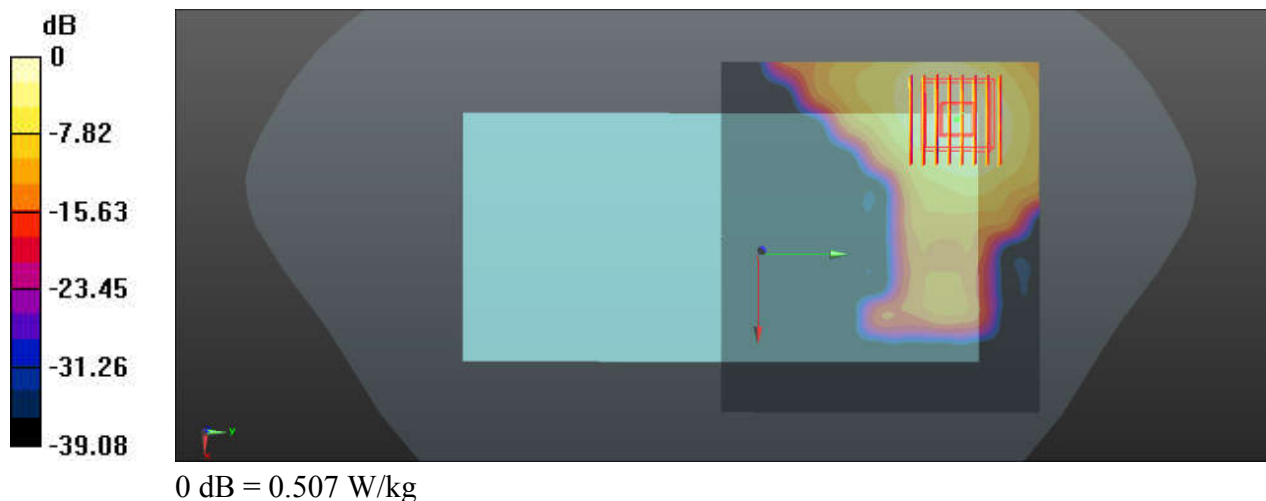
Communication System: UID 0, WIFI (0); Frequency: 5210 MHz; Duty Cycle: 1:1.138
 Medium: HSL_5250_220710 Medium parameters used: $f = 5210$ MHz; $\sigma = 4.696$ S/m; $\epsilon_r = 36.95$; $\rho = 1000$ kg/m³
 Ambient Temperature : 23.4 °C; Liquid Temperature : 22.5 °C

DASY5 Configuration:

- Probe: EX3DV4 - SN3819; ConvF(5.07, 5.07, 5.07); Calibrated: 2022/5/30
- Sensor-Surface: 1.4mm (Mechanical Surface Detection)
- Electronics: DAE4 Sn715; Calibrated: 2021/12/29
- Phantom: SAM (30deg probe tilt) with CRP v4.0; Type: QD000P40CC; Serial: TP: 1500
- Measurement SW: DASY52, Version 52.10 (3); SEMCAD X Version 14.6.13 (7474)

Ch42/Area Scan (111x101x1): Interpolated grid: dx=1.000 mm, dy=1.000 mm
 Maximum value of SAR (interpolated) = 0.519 W/kg

Ch42/Zoom Scan (8x8x7)/Cube 0: Measurement grid: dx=4mm, dy=4mm, dz=1.4mm
 Reference Value = 0 V/m; Power Drift = 0.09 dB
 Peak SAR (extrapolated) = 0.696 W/kg
SAR(1 g) = 0.260 W/kg; SAR(10 g) = 0.104 W/kg
 Maximum value of SAR (measured) = 0.507 W/kg



49_WLAN5GHz_802.11a 6Mbps_Back_15mm_Ch144

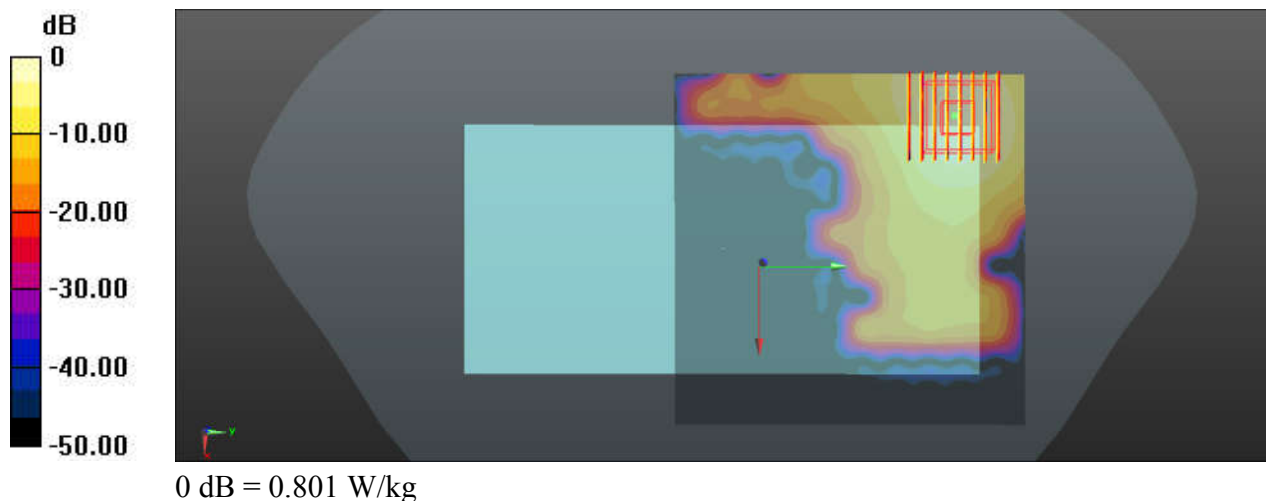
Communication System: UID 0, WIFI (0); Frequency: 5720 MHz;Duty Cycle: 1:1.032
Medium: HSL_5750_220711 Medium parameters used: $f = 5720$ MHz; $\sigma = 5.33$ S/m; $\epsilon_r = 35.865$; $\rho = 1000$ kg/m³
Ambient Temperature : 23.4 °C; Liquid Temperature : 22.3 °C

DASY5 Configuration:

- Probe: EX3DV4 - SN3819; ConvF(4.65, 4.65, 4.65); Calibrated: 2022/5/30
- Sensor-Surface: 1.4mm (Mechanical Surface Detection)
- Electronics: DAE4 Sn715; Calibrated: 2021/12/29
- Phantom: SAM (30deg probe tilt) with CRP v4.0; Type: QD000P40CC; Serial: TP: 1500
- Measurement SW: DASY52, Version 52.10 (3); SEMCAD X Version 14.6.13 (7474)

Ch144/Area Scan (111x111x1): Interpolated grid: dx=1.000 mm, dy=1.000 mm
Maximum value of SAR (interpolated) = 0.785 W/kg

Ch144/Zoom Scan (8x8x7)/Cube 0: Measurement grid: dx=4mm, dy=4mm, dz=1.4mm
Reference Value = 0 V/m; Power Drift = 0.11 dB
Peak SAR (extrapolated) = 1.24 W/kg
SAR(1 g) = 0.380 W/kg; SAR(10 g) = 0.145 W/kg
Maximum value of SAR (measured) = 0.801 W/kg



50_WLAN5GHz_802.11a 6Mbps_Back_15mm_Ch149

Communication System: UID 0, WIFI (0); Frequency: 5745 MHz; Duty Cycle: 1:1.032
Medium: HSL_5750_220711 Medium parameters used: $f = 5745$ MHz; $\sigma = 5.352$ S/m; $\epsilon_r = 35.824$;
 $\rho = 1000$ kg/m³
Ambient Temperature : 23.4 °C; Liquid Temperature : 22.3 °C

DASY5 Configuration:

- Probe: EX3DV4 - SN3819; ConvF(4.65, 4.65, 4.65); Calibrated: 2022/5/30
- Sensor-Surface: 1.4mm (Mechanical Surface Detection)
- Electronics: DAE4 Sn715; Calibrated: 2021/12/29
- Phantom: SAM (30deg probe tilt) with CRP v4.0; Type: QD000P40CC; Serial: TP: 1500
- Measurement SW: DASY52, Version 52.10 (3); SEMCAD X Version 14.6.13 (7474)

Ch149/Area Scan (111x101x1): Interpolated grid: dx=1.000 mm, dy=1.000 mm

Maximum value of SAR (interpolated) = 0.414 W/kg

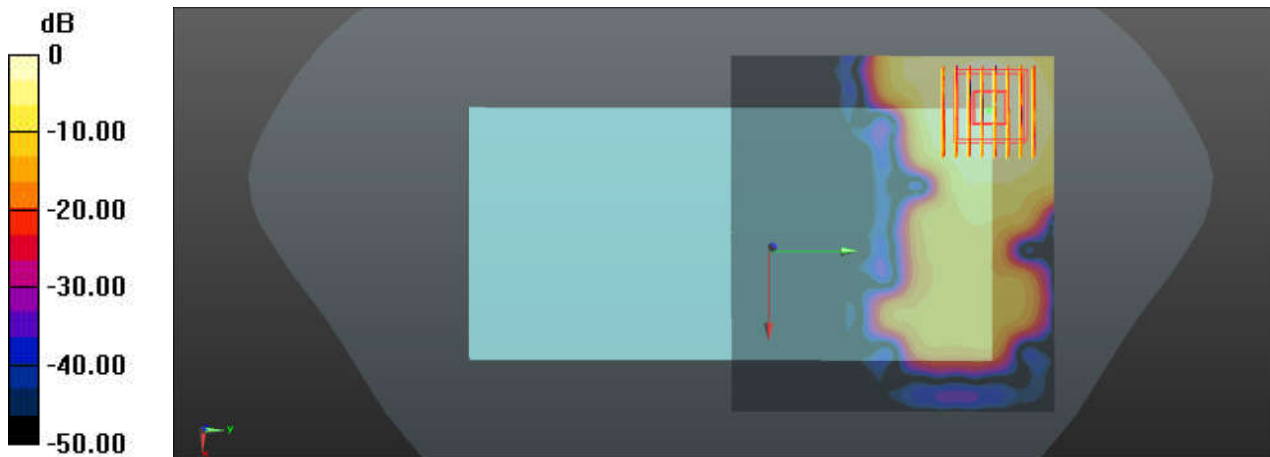
Ch149/Zoom Scan (8x8x7)/Cube 0: Measurement grid: dx=4mm, dy=4mm, dz=1.4mm

Reference Value = 0 V/m; Power Drift = 0.04 dB

Peak SAR (extrapolated) = 0.628 W/kg

SAR(1 g) = 0.197 W/kg; SAR(10 g) = 0.077 W/kg

Maximum value of SAR (measured) = 0.412 W/kg



0 dB = 0.412 W/kg

51_WCDMA IV_RMC 12.2Kbps_Bottom Side_0mm_Ch1413

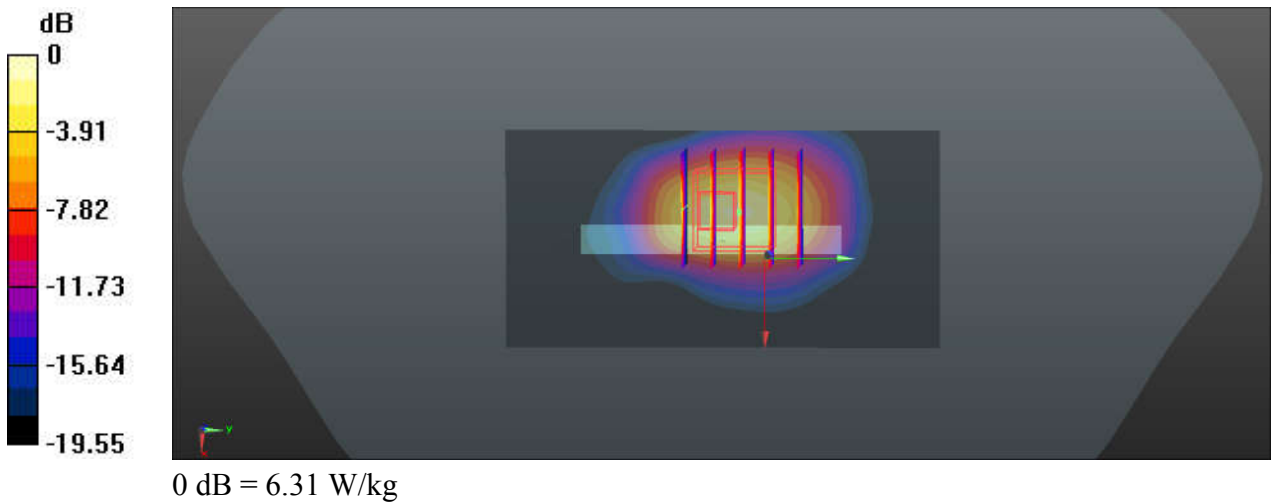
Communication System: UID 0, Generic WCDMA (0); Frequency: 1732.6 MHz; Duty Cycle: 1:1
 Medium: HSL_1750_220705 Medium parameters used: $f = 1732.6$ MHz; $\sigma = 1.387$ S/m; $\epsilon_r = 41.785$; $\rho = 1000$ kg/m³
 Ambient Temperature : 23.5 °C; Liquid Temperature : 22.7 °C

DASY5 Configuration:

- Probe: EX3DV4 - SN3819; ConvF(8.57, 8.57, 8.57); Calibrated: 2022/5/30
- Sensor-Surface: 1.4mm (Mechanical Surface Detection)
- Electronics: DAE4 Sn715; Calibrated: 2021/12/29
- Phantom: SAM (30deg probe tilt) with CRP v4.0; Type: QD000P40CC; Serial: TP: 1500
- Measurement SW: DASY52, Version 52.10 (3); SEMCAD X Version 14.6.13 (7474)

Ch1413/Area Scan (41x81x1): Interpolated grid: dx=1.500 mm, dy=1.500 mm
 Maximum value of SAR (interpolated) = 4.94 W/kg

Ch1413/Zoom Scan (5x5x7)/Cube 0: Measurement grid: dx=8mm, dy=8mm, dz=5mm
 Reference Value = 46.52 V/m; Power Drift = 0.03 dB
 Peak SAR (extrapolated) = 8.09 W/kg
SAR(1 g) = 2.99 W/kg; SAR(10 g) = 1.59 W/kg
 Maximum value of SAR (measured) = 6.31 W/kg



52_LTE Band 66_20M_QPSK_1RB_49Offset_Bottom Side_0mm_Ch132072

Communication System: UID 0, Generic LTE (0); Frequency: 1720 MHz; Duty Cycle: 1:1
 Medium: HSL_1750_220705 Medium parameters used: $f = 1720$ MHz; $\sigma = 1.372$ S/m; $\epsilon_r = 41.874$;
 $\rho = 1000$ kg/m³
 Ambient Temperature : 23.5 °C; Liquid Temperature : 22.7 °C

DASY5 Configuration:

- Probe: EX3DV4 - SN3819; ConvF(8.57, 8.57, 8.57); Calibrated: 2022/5/30
- Sensor-Surface: 1.4mm (Mechanical Surface Detection)
- Electronics: DAE4 Sn715; Calibrated: 2021/12/29
- Phantom: SAM (30deg probe tilt) with CRP v4.0; Type: QD000P40CC; Serial: TP: 1500
- Measurement SW: DASY52, Version 52.10 (3); SEMCAD X Version 14.6.13 (7474)

Ch132072/Area Scan (41x81x1): Interpolated grid: dx=1.500 mm, dy=1.500 mm

Maximum value of SAR (interpolated) = 4.63 W/kg

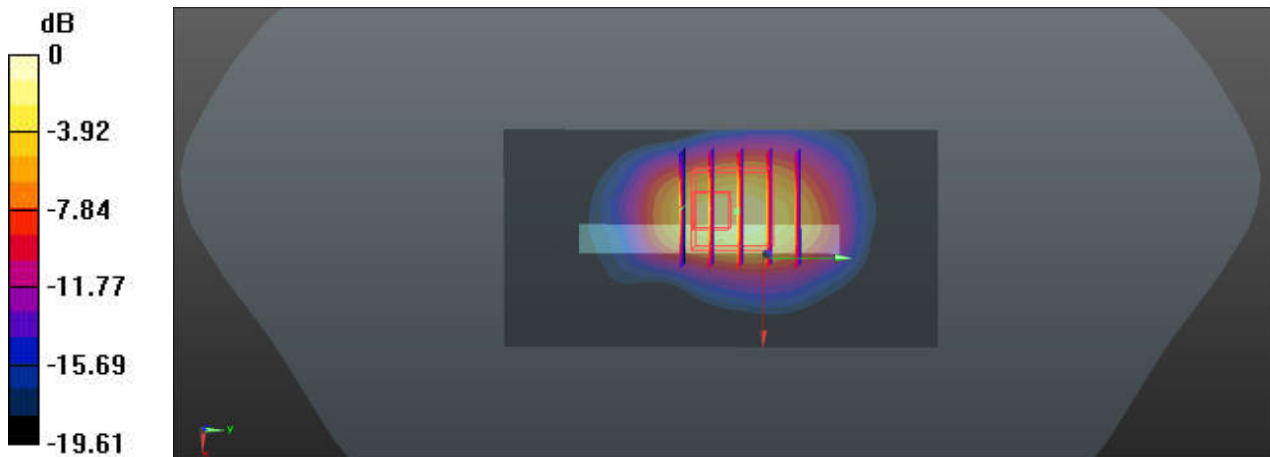
Ch132072/Zoom Scan (5x5x7)/Cube 0: Measurement grid: dx=8mm, dy=8mm, dz=5mm

Reference Value = 47.37 V/m; Power Drift = 0.08 dB

Peak SAR (extrapolated) = 8.01 W/kg

SAR(1 g) = 2.97 W/kg; SAR(10 g) = 1.54 W/kg

Maximum value of SAR (measured) = 6.24 W/kg



0 dB = 6.24 W/kg

53_WCDMA II_RMC 12.2Kbps_Top Side_0mm_Ch9400

Communication System: UID 0, Generic WCDMA (0); Frequency: 1880 MHz; Duty Cycle: 1:1
 Medium: HSL_1900_220704 Medium parameters used: $f = 1880$ MHz; $\sigma = 1.423$ S/m; $\epsilon_r = 40.121$;
 $\rho = 1000$ kg/m³
 Ambient Temperature : 23.4 °C; Liquid Temperature : 22.4 °C

DASY5 Configuration:

- Probe: EX3DV4 - SN3819; ConvF(8.32, 8.32, 8.32); Calibrated: 2022/5/30
- Sensor-Surface: 1.4mm (Mechanical Surface Detection)
- Electronics: DAE4 Sn715; Calibrated: 2021/12/29
- Phantom: SAM (30deg probe tilt) with CRP v4.0; Type: QD000P40CC; Serial: TP: 1500
- Measurement SW: DASY52, Version 52.10 (3); SEMCAD X Version 14.6.13 (7474)

Ch9400/Area Scan (41x81x1): Interpolated grid: dx=1.500 mm, dy=1.500 mm

Maximum value of SAR (interpolated) = 4.60 W/kg

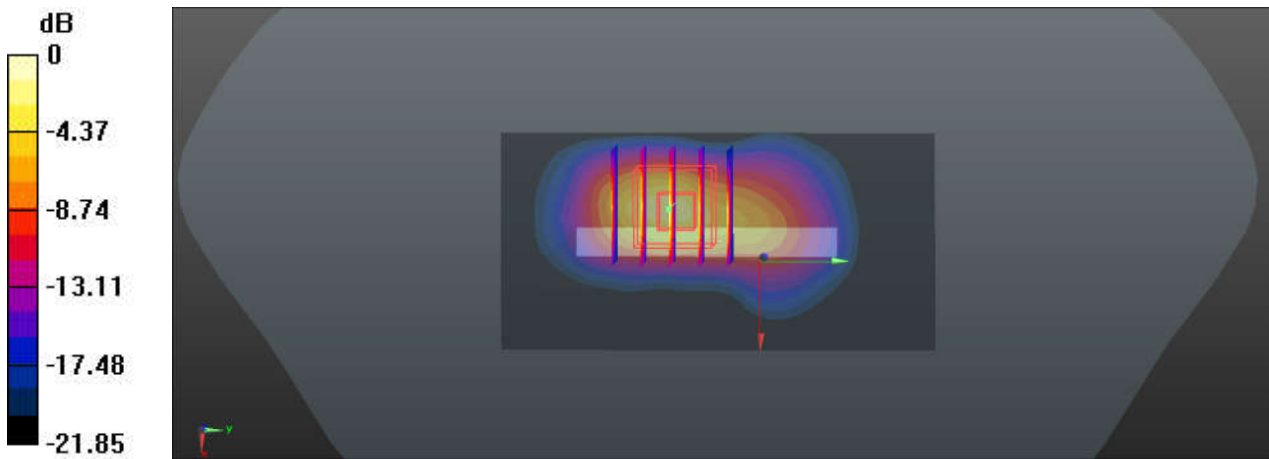
Ch9400/Zoom Scan (5x5x7)/Cube 0: Measurement grid: dx=8mm, dy=8mm, dz=5mm

Reference Value = 34.62 V/m; Power Drift = 0.06 dB

Peak SAR (extrapolated) = 8.51 W/kg

SAR(1 g) = 3.77 W/kg; SAR(10 g) = 1.61 W/kg

Maximum value of SAR (measured) = 7.06 W/kg



0 dB = 7.06 W/kg

54_LTE Band 2_20M_QPSK_1RB_49Offset_Top Side_0mm_Ch18900

Communication System: UID 0, Generic LTE (0); Frequency: 1880 MHz; Duty Cycle: 1:1
 Medium: HSL_1900_220704 Medium parameters used: $f = 1880$ MHz; $\sigma = 1.423$ S/m; $\epsilon_r = 40.121$;
 $\rho = 1000$ kg/m³
 Ambient Temperature : 23.4 °C; Liquid Temperature : 22.4 °C

DASY5 Configuration:

- Probe: EX3DV4 - SN3819; ConvF(8.32, 8.32, 8.32); Calibrated: 2022/5/30
- Sensor-Surface: 1.4mm (Mechanical Surface Detection)
- Electronics: DAE4 Sn715; Calibrated: 2021/12/29
- Phantom: SAM (30deg probe tilt) with CRP v4.0; Type: QD000P40CC; Serial: TP: 1500
- Measurement SW: DASY52, Version 52.10 (3); SEMCAD X Version 14.6.13 (7474)

Ch18900/Area Scan (41x81x1): Interpolated grid: dx=1.500 mm, dy=1.500 mm

Maximum value of SAR (interpolated) = 5.70 W/kg

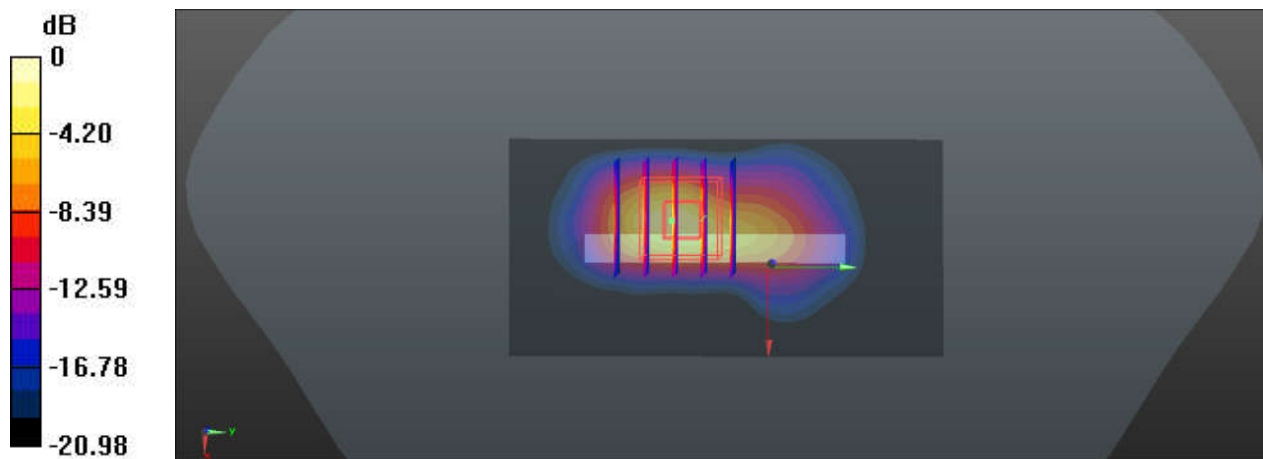
Ch18900/Zoom Scan (5x5x7)/Cube 0: Measurement grid: dx=8mm, dy=8mm, dz=5mm

Reference Value = 43.15 V/m; Power Drift = 0.06 dB

Peak SAR (extrapolated) = 10.6 W/kg

SAR(1 g) = 4.27 W/kg; SAR(10 g) = 1.83 W/kg

Maximum value of SAR (measured) = 8.34 W/kg



0 dB = 8.34 W/kg

55_LTE Band 7_20M_QPSK_1RB_49Offset_Back_0mm_Ch21350

Communication System: UID 0, Generic LTE (0); Frequency: 2560 MHz; Duty Cycle: 1:1
 Medium: HSL_2600_220708 Medium parameters used: $f = 2560$ MHz; $\sigma = 1.89$ S/m; $\epsilon_r = 38.979$; $\rho = 1000$ kg/m³
 Ambient Temperature : 23.3 °C; Liquid Temperature : 22.2 °C

DASY5 Configuration:

- Probe: EX3DV4 - SN3819; ConvF(7.39, 7.39, 7.39); Calibrated: 2022/5/30
- Sensor-Surface: 1.4mm (Mechanical Surface Detection)
- Electronics: DAE4 Sn715; Calibrated: 2021/12/29
- Phantom: SAM (30deg probe tilt) with CRP v4.0; Type: QD000P40CC; Serial: TP: 1500
- Measurement SW: DASY52, Version 52.10 (3); SEMCAD X Version 14.6.13 (7474)

Ch21350/Area Scan (91x91x1): Interpolated grid: dx=1.200 mm, dy=1.200 mm

Maximum value of SAR (interpolated) = 12.2 W/kg

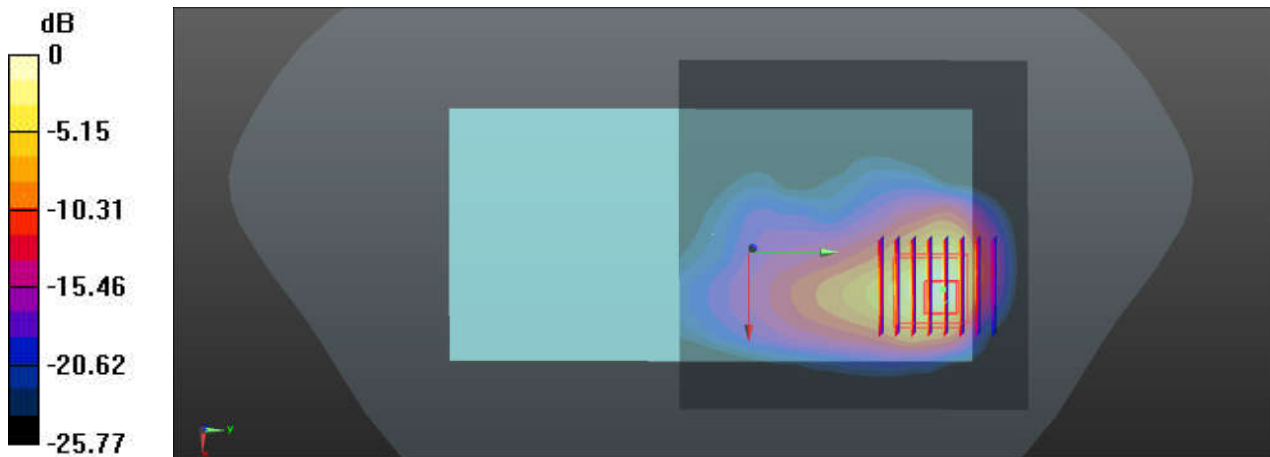
Ch21350/Zoom Scan (7x8x7)/Cube 0: Measurement grid: dx=5mm, dy=5mm, dz=5mm

Reference Value = 6.000 V/m; Power Drift = -0.04 dB

Peak SAR (extrapolated) = 15.5 W/kg

SAR(1 g) = 4.82 W/kg; SAR(10 g) = 2.01 W/kg

Maximum value of SAR (measured) = 10.8 W/kg



0 dB = 10.8 W/kg

56_LTE Band 38_20M_QPSK_1RB_49Offset_Back_0mm_Ch38000

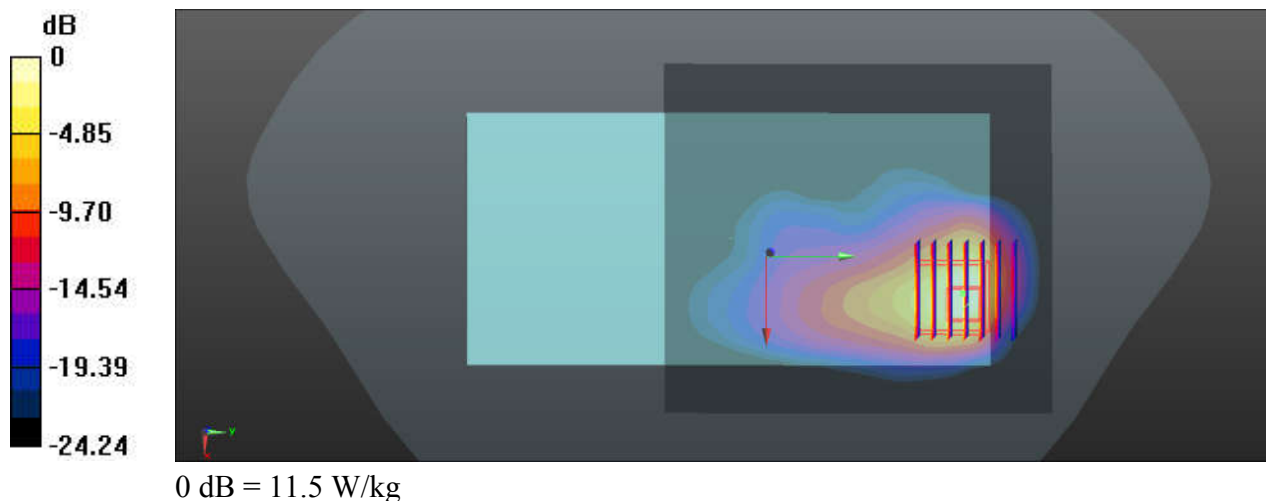
Communication System: UID 0, Generic LTE (0); Frequency: 2595 MHz; Duty Cycle: 1:1.59
 Medium: HSL_2600_220713 Medium parameters used: $f = 2595$ MHz; $\sigma = 1.929$ S/m; $\epsilon_r = 38.827$;
 $\rho = 1000$ kg/m³
 Ambient Temperature : 23.4 °C; Liquid Temperature : 22.7 °C

DASY5 Configuration:

- Probe: EX3DV4 - SN3819; ConvF(7.39, 7.39, 7.39); Calibrated: 2022/5/30
- Sensor-Surface: 1.4mm (Mechanical Surface Detection)
- Electronics: DAE4 Sn715; Calibrated: 2021/12/29
- Phantom: SAM (30deg probe tilt) with CRP v4.0; Type: QD000P40CC; Serial: TP: 1500
- Measurement SW: DASY52, Version 52.10 (3); SEMCAD X Version 14.6.13 (7474)

Ch38000/Area Scan (91x101x1): Interpolated grid: dx=1.200 mm, dy=1.200 mm
 Maximum value of SAR (interpolated) = 15.3 W/kg

Ch38000/Zoom Scan (7x7x7)/Cube 0: Measurement grid: dx=5mm, dy=5mm, dz=5mm
 Reference Value = 6.106 V/m; Power Drift = 0.11 dB
 Peak SAR (extrapolated) = 16.7 W/kg
SAR(1 g) = 3.47 W/kg; SAR(10 g) = 1.82 W/kg
 Maximum value of SAR (measured) = 11.5 W/kg



57_LTE Band 41_20M_QPSK_1RB_49Offset_Back_0mm_Ch41140

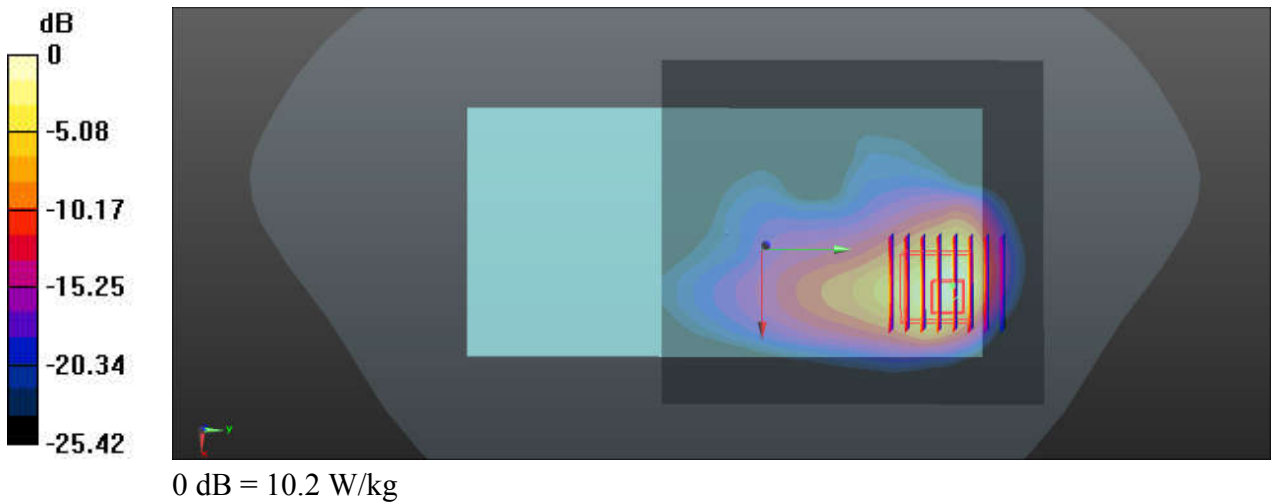
Communication System: UID 0, Generic LTE (0); Frequency: 2645 MHz; Duty Cycle: 1:1.59
 Medium: HSL_2600_220708 Medium parameters used: $f = 2645$ MHz; $\sigma = 1.978$ S/m; $\epsilon_r = 38.738$;
 $\rho = 1000$ kg/m³
 Ambient Temperature : 23.3 °C; Liquid Temperature : 22.2 °C

DASY5 Configuration:

- Probe: EX3DV4 - SN3819; ConvF(7.39, 7.39, 7.39); Calibrated: 2022/5/30
- Sensor-Surface: 1.4mm (Mechanical Surface Detection)
- Electronics: DAE4 Sn715; Calibrated: 2021/12/29
- Phantom: SAM (30deg probe tilt) with CRP v4.0; Type: QD000P40CC; Serial: TP: 1500
- Measurement SW: DASY52, Version 52.10 (3); SEMCAD X Version 14.6.13 (7474)

Ch41140/Area Scan (91x101x1): Interpolated grid: dx=1.200 mm, dy=1.200 mm
 Maximum value of SAR (interpolated) = 10.1 W/kg

Ch41140/Zoom Scan (7x8x7)/Cube 0: Measurement grid: dx=5mm, dy=5mm, dz=5mm
 Reference Value = 5.523 V/m; Power Drift = -0.06 dB
 Peak SAR (extrapolated) = 14.4 W/kg
SAR(1 g) = 4.65 W/kg; SAR(10 g) = 1.97 W/kg
 Maximum value of SAR (measured) = 10.2 W/kg



58_WLAN5GHz_802.11ac-VHT80 MCS0_Top Side_0mm_Ch42

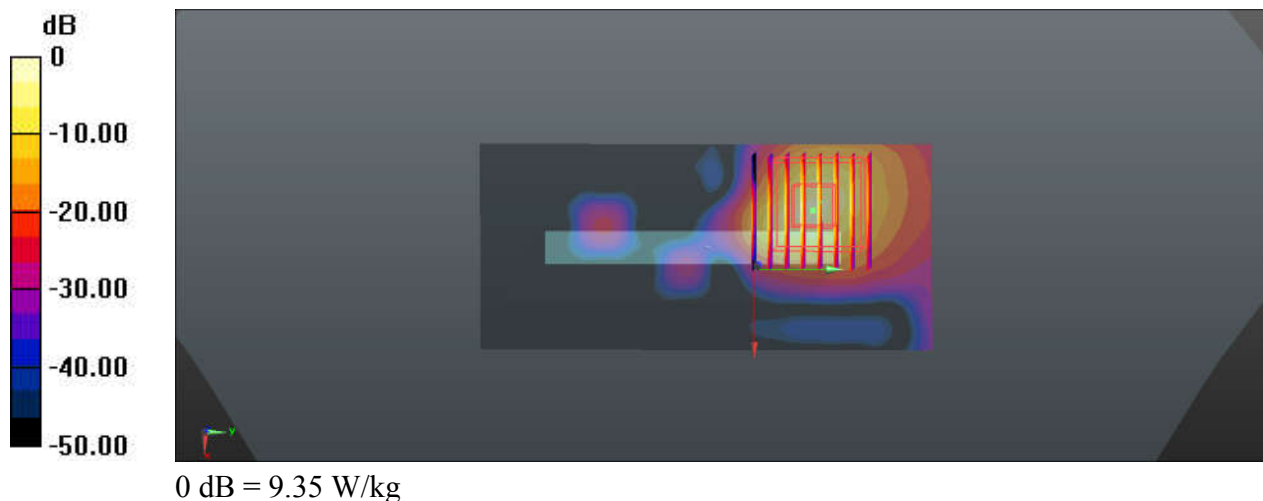
Communication System: UID 0, WIFI (0); Frequency: 5210 MHz; Duty Cycle: 1:1.138
 Medium: HSL_5250_220710 Medium parameters used: $f = 5210$ MHz; $\sigma = 4.696$ S/m; $\epsilon_r = 36.95$; $\rho = 1000$ kg/m³
 Ambient Temperature : 23.4 °C; Liquid Temperature : 22.5 °C

DASY5 Configuration:

- Probe: EX3DV4 - SN3819; ConvF(5.07, 5.07, 5.07); Calibrated: 2022/5/30
- Sensor-Surface: 1.4mm (Mechanical Surface Detection)
- Electronics: DAE4 Sn715; Calibrated: 2021/12/29
- Phantom: SAM (30deg probe tilt) with CRP v4.0; Type: QD000P40CC; Serial: TP: 1500
- Measurement SW: DASY52, Version 52.10 (3); SEMCAD X Version 14.6.13 (7474)

Ch42/Area Scan (51x111x1): Interpolated grid: dx=1.000 mm, dy=1.000 mm
 Maximum value of SAR (interpolated) = 5.76 W/kg

Ch42/Zoom Scan (8x8x7)/Cube 0: Measurement grid: dx=4mm, dy=4mm, dz=1.4mm
 Reference Value = 3.184 V/m; Power Drift = 0.09 dB
 Peak SAR (extrapolated) = 15.0 W/kg
SAR(1 g) = 3.23 W/kg; SAR(10 g) = 0.707 W/kg
 Maximum value of SAR (measured) = 9.35 W/kg



59_WLAN5GHz_802.11ac-VHT80 MCS0_Top Side_0mm_Ch58

Communication System: UID 0, WIFI (0); Frequency: 5290 MHz; Duty Cycle: 1:1.138
 Medium: HSL_5250_220710 Medium parameters used: $f = 5290$ MHz; $\sigma = 4.796$ S/m; $\epsilon_r = 36.793$;
 $\rho = 1000$ kg/m³
 Ambient Temperature : 23.4 °C; Liquid Temperature : 22.5 °C

DASY5 Configuration:

- Probe: EX3DV4 - SN3819; ConvF(5.07, 5.07, 5.07); Calibrated: 2022/5/30
- Sensor-Surface: 1.4mm (Mechanical Surface Detection)
- Electronics: DAE4 Sn715; Calibrated: 2021/12/29
- Phantom: SAM (30deg probe tilt) with CRP v4.0; Type: QD000P40CC; Serial: TP: 1500
- Measurement SW: DASY52, Version 52.10 (3); SEMCAD X Version 14.6.13 (7474)

Ch58/Area Scan (61x121x1): Interpolated grid: dx=1.000 mm, dy=1.000 mm

Maximum value of SAR (interpolated) = 10.6 W/kg

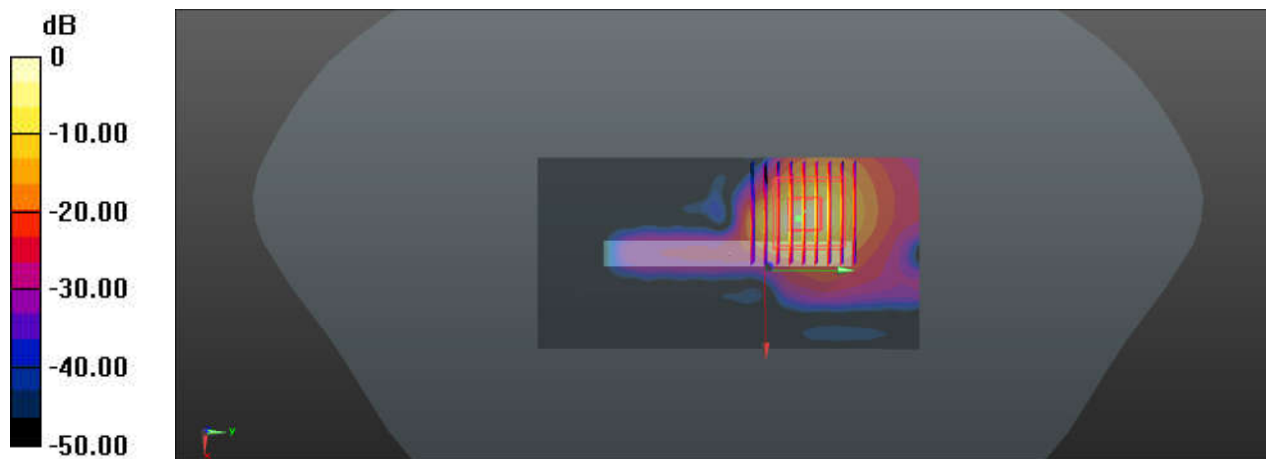
Ch58/Zoom Scan (9x9x7)/Cube 0: Measurement grid: dx=4mm, dy=4mm, dz=1.4mm

Reference Value = 2.630 V/m; Power Drift = 0.07 dB

Peak SAR (extrapolated) = 18.3 W/kg

SAR(1 g) = 3.77 W/kg; SAR(10 g) = 0.822 W/kg

Maximum value of SAR (measured) = 11.0 W/kg



0 dB = 11.0 W/kg

60_WLAN5GHz_802.11a 6Mbps_Top Side_0mm_Ch144

Communication System: UID 0, WIFI (0); Frequency: 5720 MHz; Duty Cycle: 1:1.032
 Medium: HSL_5750_220711 Medium parameters used: $f = 5720$ MHz; $\sigma = 5.33$ S/m; $\epsilon_r = 35.865$; $\rho = 1000$ kg/m³
 Ambient Temperature : 23.4 °C; Liquid Temperature : 22.3 °C

DASY5 Configuration:

- Probe: EX3DV4 - SN3819; ConvF(4.65, 4.65, 4.65); Calibrated: 2022/5/30
- Sensor-Surface: 1.4mm (Mechanical Surface Detection)
- Electronics: DAE4 Sn715; Calibrated: 2021/12/29
- Phantom: SAM (30deg probe tilt) with CRP v4.0; Type: QD000P40CC; Serial: TP: 1500
- Measurement SW: DASY52, Version 52.10 (3); SEMCAD X Version 14.6.13 (7474)

Ch144/Area Scan (61x121x1): Interpolated grid: dx=1.000 mm, dy=1.000 mm

Maximum value of SAR (interpolated) = 10.6 W/kg

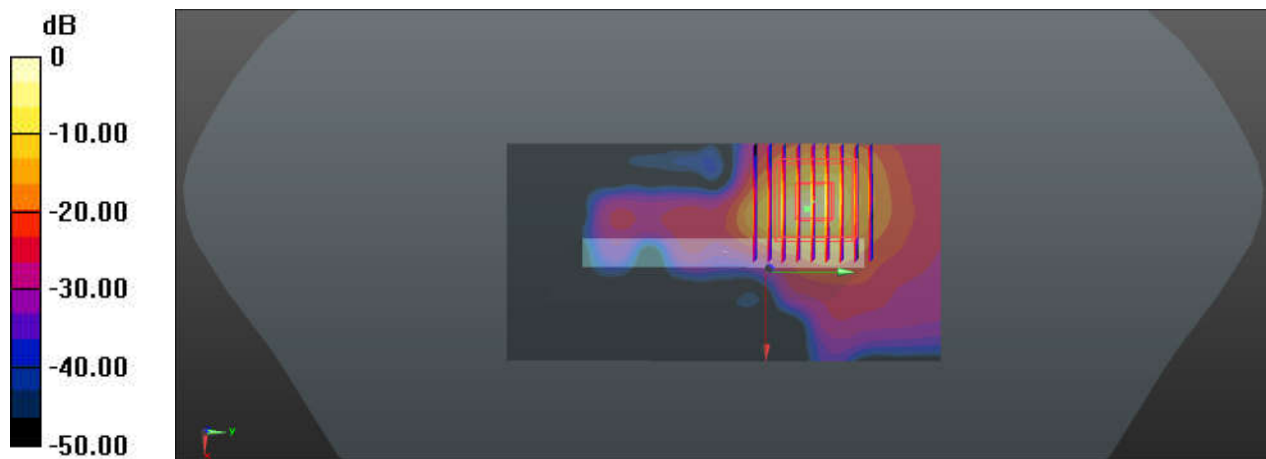
Ch144/Zoom Scan (9x9x7)/Cube 0: Measurement grid: dx=4mm, dy=4mm, dz=1.4mm

Reference Value = 2.570 V/m; Power Drift = -0.08 dB

Peak SAR (extrapolated) = 31.4 W/kg

SAR(1 g) = 4.98 W/kg; SAR(10 g) = 0.994 W/kg

Maximum value of SAR (measured) = 17.1 W/kg



0 dB = 17.1 W/kg



Appendix C. DAS Y Calibration Certificate

The DAS Y calibration certificates are shown as follows.



In Collaboration with
s p e a g
CALIBRATION LABORATORY



中国认可
国际互认
校准
CALIBRATION
CNAS L0570

Add: No.52 HuanYuanBei Road, Haidian District, Beijing, 100191, CI
Tel: +86-10-62304633-2079 Fax: +86-10-62304633-2504
E-mail: cttl@chinattl.com http://www.chinattl.cn

Client **Sporton**

Certificate No: **Z21-60550**

CALIBRATION CERTIFICATE

Object **D750V3 - SN: 1099**

Calibration Procedure(s) **FF-Z11-003-01**
Calibration Procedures for dipole validation kits

Calibration date: **December 15, 2021**

This calibration Certificate documents the traceability to national standards, which realize the physical units of measurements (SI). The measurements and the uncertainties with confidence probability are given on the following pages and are part of the certificate.

All calibrations have been conducted in the closed laboratory facility: environment temperature (22±3)°C and humidity<70%.

Calibration Equipment used (M&TE critical for calibration)

Primary Standards	ID #	Cal Date (Calibrated by, Certificate No.)	Scheduled Calibration
Power Meter NRP2	106277	24-Sep-21 (CTTL, No.J21X08326)	Sep-22
Power sensor NRP8S	104291	24-Sep-21 (CTTL, No.J21X08326)	Sep-22
Reference Probe EX3DV4	SN 7307	26-May-21(SPEAG,No.EX3-7307_May21)	May-22
DAE4	SN 1556	15-Jan-21(SPEAG,No.DAE4-1556_Jan21)	Jan-22
Secondary Standards	ID #	Cal Date (Calibrated by, Certificate No.)	Scheduled Calibration
Signal Generator E4438C	MY49071430	01-Feb-21 (CTTL, No.J21X00593)	Jan-22
NetworkAnalyzer E5071C	MY46110673	14-Jan-21 (CTTL, No.J21X00232)	Jan-22

	Name	Function	Signature
Calibrated by:	Zhao Jing	SAR Test Engineer	
Reviewed by:	Lin Hao	SAR Test Engineer	
Approved by:	Qi Dianyuan	SAR Project Leader	

Issued: December 24, 2021

This calibration certificate shall not be reproduced except in full without written approval of the laboratory.



Add: No.52 HuanYuanBei Road, Haidian District, Beijing, 100191, China
Tel: +86-10-62304633-2079 Fax: +86-10-62304633-2504
E-mail: cttl@chinattl.com http://www.chinattl.cn

Glossary:

TSL	tissue simulating liquid
ConvF	sensitivity in TSL / NORM _{x,y,z}
N/A	not applicable or not measured

Calibration is Performed According to the Following Standards:

- IEEE Std 1528-2013, "IEEE Recommended Practice for Determining the Peak Spatial-Averaged Specific Absorption Rate (SAR) in the Human Head from Wireless Communications Devices: Measurement Techniques", June 2013
- IEC 62209-1, "Measurement procedure for assessment of specific absorption rate of human exposure to radio frequency fields from hand-held and body-mounted wireless communication devices- Part 1: Device used next to the ear (Frequency range of 300MHz to 6GHz)", July 2016
- IEC 62209-2, "Procedure to measure the Specific Absorption Rate (SAR) For wireless communication devices used in close proximity to the human body (frequency range of 30MHz to 6GHz)", March 2010
- KDB865664, SAR Measurement Requirements for 100 MHz to 6 GHz

Additional Documentation:

- DASY4/5 System Handbook

Methods Applied and Interpretation of Parameters:

- Measurement Conditions:* Further details are available from the Validation Report at the end of the certificate. All figures stated in the certificate are valid at the frequency indicated.
- Antenna Parameters with TSL:* The dipole is mounted with the spacer to position its feed point exactly below the center marking of the flat phantom section, with the arms oriented parallel to the body axis.
- Feed Point Impedance and Return Loss:* These parameters are measured with the dipole positioned under the liquid filled phantom. The impedance stated is transformed from the measurement at the SMA connector to the feed point. The Return Loss ensures low reflected power. No uncertainty required.
- Electrical Delay:* One-way delay between the SMA connector and the antenna feed point. No uncertainty required.
- SAR measured:* SAR measured at the stated antenna input power.
- SAR normalized:* SAR as measured, normalized to an input power of 1 W at the antenna connector.
- SAR for nominal TSL parameters:* The measured TSL parameters are used to calculate the nominal SAR result.

The reported uncertainty of measurement is stated as the standard uncertainty of Measurement multiplied by the coverage factor $k=2$, which for a normal distribution Corresponds to a coverage probability of approximately 95%.



Add: No.52 HuanYuanBei Road, Haidian District, Beijing, 100191, China
 Tel: +86-10-62304633-2079 Fax: +86-10-62304633-2504
 E-mail: cttl@chinattl.com http://www.chinattl.cn

Measurement Conditions

DASY system configuration, as far as not given on page 1.

DASY Version	DASY52	V52.10.4
Extrapolation	Advanced Extrapolation	
Phantom	Triple Flat Phantom 5.1C	
Distance Dipole Center - TSL	15 mm	with Spacer
Zoom Scan Resolution	dx, dy, dz = 5 mm	
Frequency	750 MHz \pm 1 MHz	

Head TSL parameters

The following parameters and calculations were applied.

	Temperature	Permittivity	Conductivity
Nominal Head TSL parameters	22.0 °C	42.0	0.90 mho/m
Measured Head TSL parameters	(22.0 \pm 0.2) °C	41.1 \pm 6 %	0.90 mho/m \pm 6 %
Head TSL temperature change during test	<1.0 °C	----	----

SAR result with Head TSL

SAR averaged over 1 cm³ (1 g) of Head TSL	Condition	
SAR measured	250 mW input power	2.17 W/kg
SAR for nominal Head TSL parameters	normalized to 1W	8.54 W/kg \pm 18.8 % (k=2)
SAR averaged over 10 cm³ (10 g) of Head TSL	Condition	
SAR measured	250 mW input power	1.43 W/kg
SAR for nominal Head TSL parameters	normalized to 1W	5.65 W/kg \pm 18.7 % (k=2)



Add: No.52 HuanYuanBei Road, Haidian District, Beijing, 100191, China
Tel: +86-10-62304633-2079 Fax: +86-10-62304633-2504
E-mail: cttl@chinattl.com http://www.chinattl.cn

Appendix (Additional assessments outside the scope of CNAS L0570)

Antenna Parameters with Head TSL

Impedance, transformed to feed point	55.0Ω+ 0.78jΩ
Return Loss	- 26.4dB

General Antenna Parameters and Design

Electrical Delay (one direction)	0.942 ns
----------------------------------	----------

After long term use with 100W radiated power, only a slight warming of the dipole near the feedpoint can be measured.

The dipole is made of standard semirigid coaxial cable. The center conductor of the feeding line is directly connected to the second arm of the dipole. The antenna is therefore short-circuited for DC-signals. On some of the dipoles, small end caps are added to the dipole arms in order to improve matching when loaded according to the position as explained in the "Measurement Conditions" paragraph. The SAR data are not affected by this change. The overall dipole length is still according to the Standard. No excessive force must be applied to the dipole arms, because they might bend or the soldered connections near the feedpoint may be damaged.

Additional EUT Data

Manufactured by	SPEAG
-----------------	-------



Add: No.52 HuanYuanBei Road, Haidian District, Beijing, 100191, China
Tel: +86-10-62304633-2079 Fax: +86-10-62304633-2504
E-mail: cttl@chinattl.com http://www.chinattl.cn

DASY5 Validation Report for Head TSL

Date: 2021-12-15

Test Laboratory: CTTL, Beijing, China

DUT: Dipole 750 MHz; Type: D750V3; Serial: D750V3 - SN: 1099

Communication System: UID 0, CW; Frequency: 750 MHz; Duty Cycle: 1:1

Medium parameters used: $f = 750 \text{ MHz}$; $\sigma = 0.904 \text{ S/m}$; $\epsilon_r = 41.1$; $\rho = 1000 \text{ kg/m}^3$

Phantom section: Right Section

Measurement Standard: DASY5 (IEEE/IEC/ANSI C63.19-2007)

DASY5 Configuration:

- Probe: EX3DV4 - SN7307; ConvF(10.31, 10.31, 10.31) @ 750 MHz; Calibrated: 2021-05-26
- Sensor-Surface: 1.4mm (Mechanical Surface Detection)
- Electronics: DAE4 Sn1556; Calibrated: 2021-01-15
- Phantom: MFP_V5.1C (20deg probe tilt); Type: QD 000 P51 Cx; Serial: 1062
- DASY52 52.10.4(1535); SEMCAD X 14.6.14(7501)

Dipole Calibration/Zoom Scan (7x7x7) (7x7x7)/Cube 0: Measurement grid: $dx=5\text{mm}$, $dy=5\text{mm}$, $dz=5\text{mm}$

Reference Value = 56.18 V/m; Power Drift = -0.01 dB

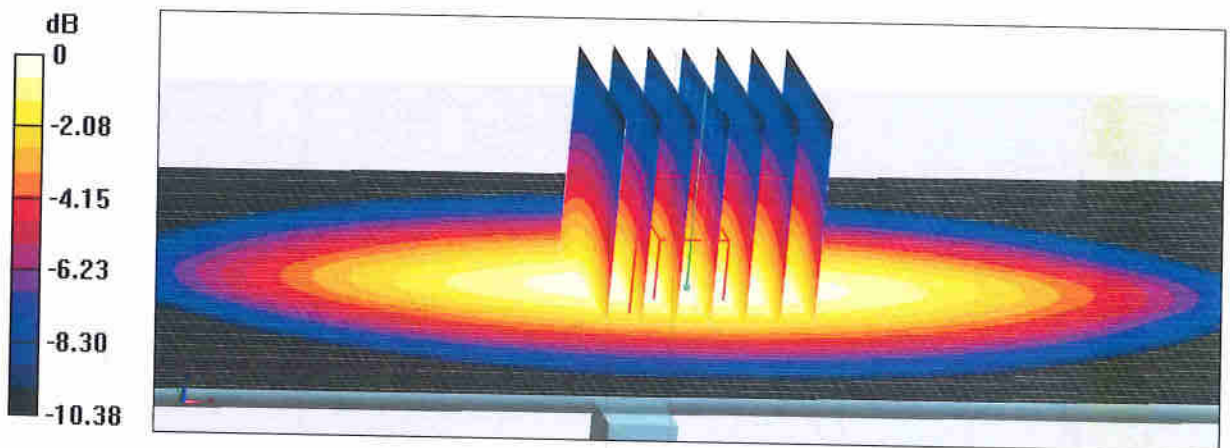
Peak SAR (extrapolated) = 3.25 W/kg

SAR(1 g) = 2.17 W/kg; SAR(10 g) = 1.43 W/kg

Smallest distance from peaks to all points 3 dB below: Larger than measurement grid (> 15 mm)

Ratio of SAR at M2 to SAR at M1 = 66.5%

Maximum value of SAR (measured) = 2.89 W/kg

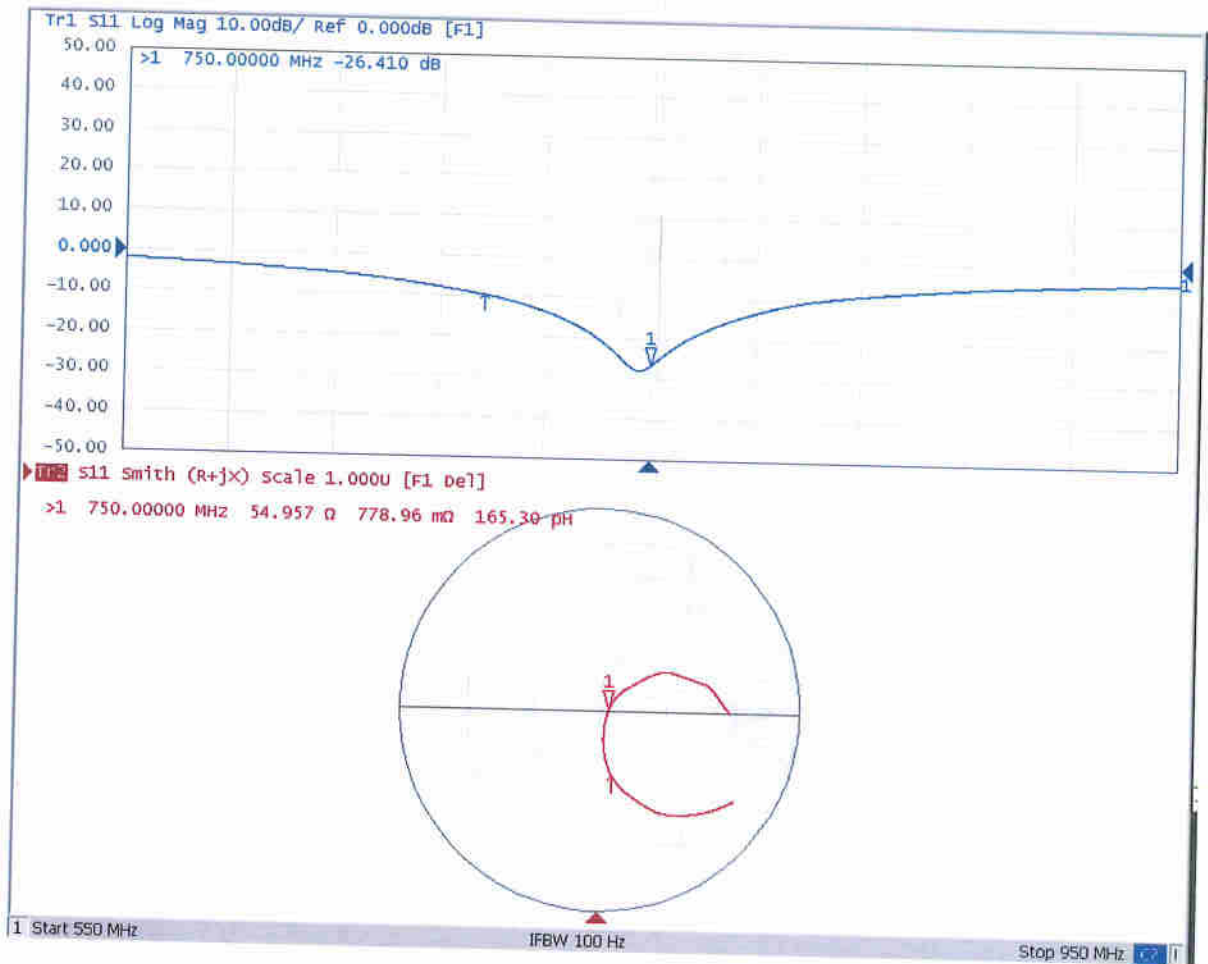


0 dB = 2.89 W/kg = 4.61 dBW/kg



Add: No.52 HuanYuanBei Road, Haidian District, Beijing, 100191, China
Tel: +86-10-62304633-2079 Fax: +86-10-62304633-2504
E-mail: cttl@chinattl.com http://www.chinattl.cn

Impedance Measurement Plot for Head TSL





In Collaboration with
s p e a g
CALIBRATION LABORATORY



中国认可
国际互认
校准
CALIBRATION
CNAS L0570

Add: No.52 HuaYuanBei Road, Haidian District, Beijing, 100191, Chi
Tel: +86-10-62304633-2079 Fax: +86-10-62304633-2504
E-mail: cttl@chinattl.com http://www.chinattl.cn

Client **Sporton**

Certificate No: **Z21-60551**

CALIBRATION CERTIFICATE

Object **D835V2 - SN: 4d162**

Calibration Procedure(s) **FF-Z11-003-01**
Calibration Procedures for dipole validation kits

Calibration date: **December 17, 2021**

This calibration Certificate documents the traceability to national standards, which realize the physical units of measurements (SI). The measurements and the uncertainties with confidence probability are given on the following pages and are part of the certificate.

All calibrations have been conducted in the closed laboratory facility: environment temperature (22±3)°C and humidity<70%.

Calibration Equipment used (M&TE critical for calibration)

Primary Standards	ID #	Cal Date (Calibrated by, Certificate No.)	Scheduled Calibration
Power Meter NRP2	106277	24-Sep-21 (CTTL, No.J21X08326)	Sep-22
Power sensor NRP8S	104291	24-Sep-21 (CTTL, No.J21X08326)	Sep-22
Reference Probe EX3DV4	SN 7307	26-May-21(SPEAG,No.EX3-7307_May21)	May-22
DAE4	SN 1556	15-Jan-21(SPEAG,No.DAE4-1556_Jan21)	Jan-22
Secondary Standards	ID #	Cal Date (Calibrated by, Certificate No.)	Scheduled Calibration
Signal Generator E4438C	MY49071430	01-Feb-21 (CTTL, No.J21X00593)	Jan-22
NetworkAnalyzer E5071C	MY46110673	14-Jan-21 (CTTL, No.J21X00232)	Jan-22

	Name	Function	Signature
Calibrated by:	Zhao Jing	SAR Test Engineer	
Reviewed by:	Lin Hao	SAR Test Engineer	
Approved by:	Qi Dianyuan	SAR Project Leader	

Issued: December 24, 2021

This calibration certificate shall not be reproduced except in full without written approval of the laboratory.



Glossary:

TSL	tissue simulating liquid
ConvF	sensitivity in TSL / NORM _{x,y,z}
N/A	not applicable or not measured

Calibration is Performed According to the Following Standards:

- IEEE Std 1528-2013, "IEEE Recommended Practice for Determining the Peak Spatial-Averaged Specific Absorption Rate (SAR) in the Human Head from Wireless Communications Devices: Measurement Techniques", June 2013
- IEC 62209-1, "Measurement procedure for assessment of specific absorption rate of human exposure to radio frequency fields from hand-held and body-mounted wireless communication devices- Part 1: Device used next to the ear (Frequency range of 300MHz to 6GHz)", July 2016
- IEC 62209-2, "Procedure to measure the Specific Absorption Rate (SAR) For wireless communication devices used in close proximity to the human body (frequency range of 30MHz to 6GHz)", March 2010
- KDB865664, SAR Measurement Requirements for 100 MHz to 6 GHz

Additional Documentation:

- DASY4/5 System Handbook

Methods Applied and Interpretation of Parameters:

- Measurement Conditions:* Further details are available from the Validation Report at the end of the certificate. All figures stated in the certificate are valid at the frequency indicated.
- Antenna Parameters with TSL:* The dipole is mounted with the spacer to position its feed point exactly below the center marking of the flat phantom section, with the arms oriented parallel to the body axis.
- Feed Point Impedance and Return Loss:* These parameters are measured with the dipole positioned under the liquid filled phantom. The impedance stated is transformed from the measurement at the SMA connector to the feed point. The Return Loss ensures low reflected power. No uncertainty required.
- Electrical Delay:* One-way delay between the SMA connector and the antenna feed point. No uncertainty required.
- SAR measured:* SAR measured at the stated antenna input power.
- SAR normalized:* SAR as measured, normalized to an input power of 1 W at the antenna connector.
- SAR for nominal TSL parameters:* The measured TSL parameters are used to calculate the nominal SAR result.

The reported uncertainty of measurement is stated as the standard uncertainty of Measurement multiplied by the coverage factor $k=2$, which for a normal distribution Corresponds to a coverage probability of approximately 95%.



Add: No.52 HuaYuanBei Road, Haidian District, Beijing, 100191, China
 Tel: +86-10-62304633-2079 Fax: +86-10-62304633-2504
 E-mail: cttl@chinattl.com http://www.chinattl.cn

Measurement Conditions

DASY system configuration, as far as not given on page 1.

DASY Version	DASY52	V52.10.4
Extrapolation	Advanced Extrapolation	
Phantom	Triple Flat Phantom 5.1C	
Distance Dipole Center - TSL	15 mm	with Spacer
Zoom Scan Resolution	dx, dy, dz = 5 mm	
Frequency	835 MHz ± 1 MHz	

Head TSL parameters

The following parameters and calculations were applied.

	Temperature	Permittivity	Conductivity
Nominal Head TSL parameters	22.0 °C	41.5	0.90 mho/m
Measured Head TSL parameters	(22.0 ± 0.2) °C	40.8 ± 6 %	0.91 mho/m ± 6 %
Head TSL temperature change during test	<1.0 °C	----	----

SAR result with Head TSL

SAR averaged over 1 cm ³ (1 g) of Head TSL	Condition	
SAR measured	250 mW input power	2.44 W/kg
SAR for nominal Head TSL parameters	normalized to 1W	9.64 W/kg ± 18.8 % (k=2)
SAR averaged over 10 cm ³ (10 g) of Head TSL	Condition	
SAR measured	250 mW input power	1.58 W/kg
SAR for nominal Head TSL parameters	normalized to 1W	6.26 W/kg ± 18.7 % (k=2)



Add: No.52 HuaYuanBei Road, Haidian District, Beijing, 100191, China
Tel: +86-10-62304633-2079 Fax: +86-10-62304633-2504
E-mail: cttl@chinattl.com http://www.chinattl.cn

Appendix (Additional assessments outside the scope of CNAS L0570)

Antenna Parameters with Head TSL

Impedance, transformed to feed point	53.7 Ω - 2.20j Ω
Return Loss	- 27.7dB

General Antenna Parameters and Design

Electrical Delay (one direction)	1.346 ns
----------------------------------	----------

After long term use with 100W radiated power, only a slight warming of the dipole near the feedpoint can be measured.

The dipole is made of standard semirigid coaxial cable. The center conductor of the feeding line is directly connected to the second arm of the dipole. The antenna is therefore short-circuited for DC-signals. On some of the dipoles, small end caps are added to the dipole arms in order to improve matching when loaded according to the position as explained in the "Measurement Conditions" paragraph. The SAR data are not affected by this change. The overall dipole length is still according to the Standard. No excessive force must be applied to the dipole arms, because they might bend or the soldered connections near the feedpoint may be damaged.

Additional EUT Data

Manufactured by	SPEAG
-----------------	-------



Add: No.52 HuaYuanBei Road, Haidian District, Beijing, 100191, China
Tel: +86-10-62304633-2079 Fax: +86-10-62304633-2504
E-mail: cttl@chinattl.com http://www.chinattl.cn

DASY5 Validation Report for Head TSL

Date: 2021-12-17

Test Laboratory: CTTL, Beijing, China

DUT: Dipole 835 MHz; Type: D835V2; Serial: D835V2 - SN: 4d162

Communication System: UID 0, CW; Frequency: 835 MHz; Duty Cycle: 1:1

Medium parameters used: $f = 835$ MHz; $\sigma = 0.91$ S/m; $\epsilon_r = 40.77$; $\rho = 1000$ kg/m³

Phantom section: Right Section

Measurement Standard: DASY5 (IEEE/IEC/ANSI C63.19-2007)

DASY5 Configuration:

- Probe: EX3DV4 - SN7307; ConvF(10.13, 10.13, 10.13) @ 835 MHz; Calibrated: 2021-05-26
- Sensor-Surface: 1.4mm (Mechanical Surface Detection)
- Electronics: DAE4 Sn1556; Calibrated: 2021-01-15
- Phantom: MFP_V5.1C (20deg probe tilt); Type: QD 000 P51 Cx; Serial: 1062
- DASY52 52.10.4(1535); SEMCAD X 14.6.14(7501)

Dipole Calibration/Zoom Scan (7x7x7) (7x7x7)/Cube 0: Measurement grid: dx=5mm, dy=5mm, dz=5mm

Reference Value = 59.81 V/m; Power Drift = -0.01 dB

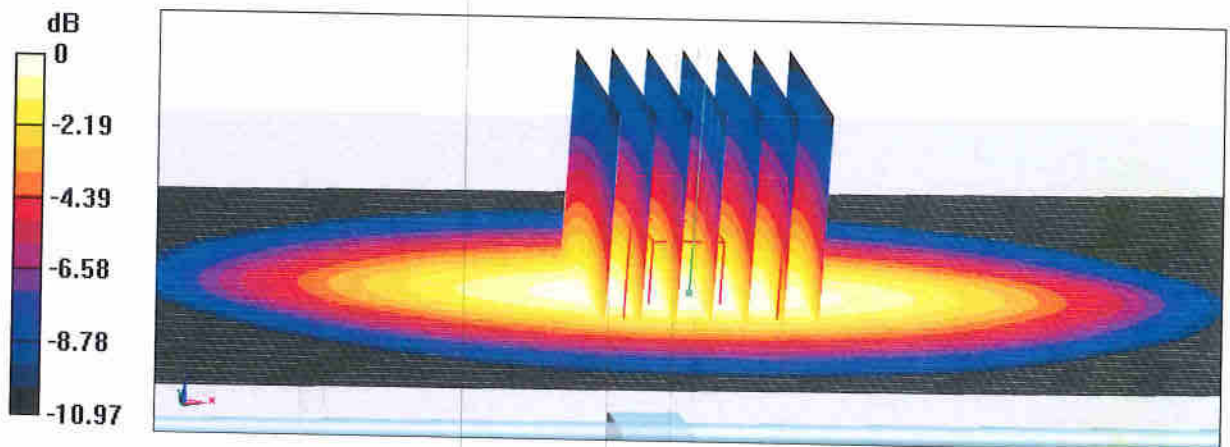
Peak SAR (extrapolated) = 3.70 W/kg

SAR(1 g) = 2.44 W/kg; SAR(10 g) = 1.58 W/kg

Smallest distance from peaks to all points 3 dB below = 20.5 mm

Ratio of SAR at M2 to SAR at M1 = 65.7%

Maximum value of SAR (measured) = 3.28 W/kg





In Collaboration with
s p e a g
CALIBRATION LABORATORY

Add: No.52 HuaYuanBei Road, Haidian District, Beijing, 100191, China
Tel: +86-10-62304633-2079 Fax: +86-10-62304633-2504
E-mail: cttl@chinattl.com http://www.chinattl.cn

Impedance Measurement Plot for Head TSL

