

System Check_Head_13MHz

DUT: CLA13-1011

Communication System: CW; Frequency: 13 MHz; Duty Cycle: 1:1

Medium: HSL_13_220712 Medium parameters used: $f = 13$ MHz; $\sigma = 0.757$ S/m; $\epsilon_r = 53.7$; $\rho = 1000$ kg/m³

Ambient Temperature : 23.5 °C; Liquid Temperature : 22.5 °C

DASY5 Configuration:

- Probe: EX3DV4 - SN3642; ConvF(15.17, 15.17, 15.17) @ 13 MHz; Calibrated: 2022/4/28
- Sensor-Surface: 1.4mm (Mechanical Surface Detection)
- Electronics: DAE4 Sn854; Calibrated: 2021/8/19
- Phantom: ELI v4.0; Type: QDOVA001BB; Serial: 1026
- Measurement SW: DASY52, Version 52.10 (4); SEMCAD X Version 14.6.14 (7483)

Pin=250mW/Area Scan (81x81x1): Interpolated grid: dx=1.500 mm, dy=1.500 mm

Maximum value of SAR (interpolated) = 0.254 W/kg

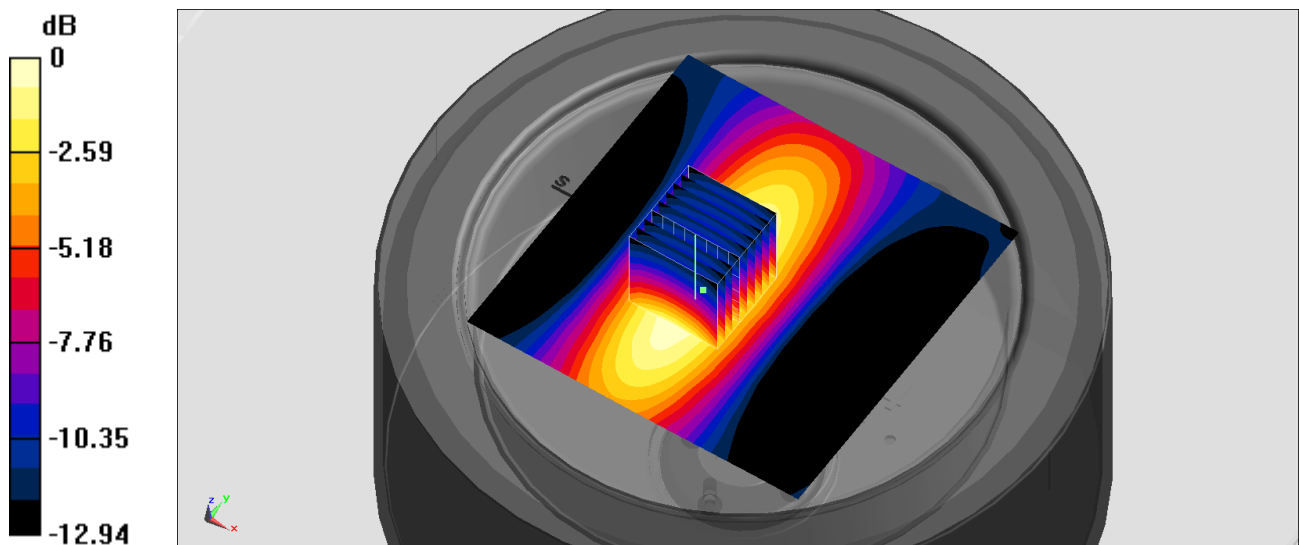
Pin=250mW/Zoom Scan 2 (5x5x7)/Cube 0: Measurement grid: dx=8mm, dy=8mm, dz=5mm

Reference Value = 12.68 V/m; Power Drift = -0.06 dB

Peak SAR (extrapolated) = 0.274 W/kg

SAR(1 g) = 0.150 W/kg; SAR(10 g) = 0.092 W/kg

Maximum value of SAR (measured) = 0.221 W/kg



0 dB = 0.437 W/kg = -3.60 dBW/kg