

TEST REPORT

Product Name : Glass touch panel
Model Number : LSSMBU02NP_A, LSSMBU03NP_A
LSSMBU04NP_A, LSSMBU06NP_A
LSSMBU09NP_A, LSSMBU10NP_A
LSSMBU12NP_A, LSSMTH07NP_A
LSSMTH08NP_A, LSSMDN01NP_A
LSSMDP01NP_A, LSSMKH03NP_A
LSSMKH03RP_A, LSSMBU02NS_A
LSSMBU03NS_A, LSSMBU04NS_A
LSSMBU06NS_A, LSSMBU09NS_A
LSSMBU10NS_A, LSSMBU12NS_A
LSSMTH07NS_A, LSSMTH08NS_A
LSSMDN01NS_A, LSSMDP01NS_A
LSSMKH03NS_A, LSSMKH03RS_A
FCC ID : 2AUCU-GP0011

Prepared for : Schneider Electric (China) Co.,Ltd, Shenzhen Branch
Address : Room 201, Building A, No. 1 Qianwanyi Road, Shengang
Cooperation Zone, Qianhai, Shenzhen

Prepared by : EMTEK (SHENZHEN) CO., LTD.
Address : Building 69, Majialong Industry Zone, Nanshan District,
Shenzhen, Guangdong, China

Tel: (0755) 26954280
Fax: (0755) 26954282

Report Number : ES200527011E
Date(s) of Tests : May 27, 2020 to July 03, 2020
Date of issue : July 03, 2020

VERIFICATION OF COMPLIANCE

Applicant:	Schneider Electric (China) Co.,Ltd, Shenzhen Branch Room 201, Building A, No. 1 Qianwanyi Road, Shengang Cooperation Zone, Qianhai, Shenzhen
Manufacturer:	Wellav Technologies Ltd. No.1, Shunchang Road, Huinan Hi-Tech Industrial Park, Zhongkai Hi-Tech Development Zone, Huizhou, Guangdong, China 516025
Product Description:	Glass touch panel
Model Number:	LSSMBU02NP_A, LSSMBU03NP_A, LSSMBU04NP_A, LSSMBU06NP_A, LSSMBU09NP_A, LSSMBU10NP_A, LSSMBU12NP_A, LSSMTH07NP_A, LSSMTH08NP_A, LSSMDN01NP_A, LSSMDP01NP_A, LSSMKH03NP_A, LSSMKH03RP_A, LSSMBU02NS_A, LSSMBU03NS_A, LSSMBU04NS_A, LSSMBU06NS_A, LSSMBU09NS_A, LSSMBU10NS_A, LSSMBU12NS_A, LSSMTH07NS_A, LSSMTH08NS_A, LSSMDN01NS_A, LSSMDP01NS_A, LSSMKH03NS_A, LSSMKH03RS_A
Trademark:	Schneider


We hereby certify that:

The above equipment was tested by EMTEK(SHENZHEN) CO., LTD. The test data, data evaluation, test procedures, and equipment configurations shown in this report were made in accordance with the procedures given in ANSI C63.10-2013 and the energy emitted by the sample EUT tested as described in this report is in compliance with conducted and radiated emission limits of FCC Rules Part 15.225(2016).

Date of Test : May 27, 2020 to July 03, 2020

Prepared by : 
Loren Luo/Editor

Reviewer : 
Tim Dong/Supervisor

Approved & Authorized Signer : 
Lisa Wang/Manager



Modified Information

Version	Summary	Revision Date	Report No.
Ver.1.0	Original Report	/	ES200527011E



Table of Contents

1	GENERAL INFORMATION.....	5
1.1	PRODUCT DESCRIPTION.....	5
1.2	RELATED SUBMITTAL(S) / GRANT(S).....	5
1.3	TEST METHODOLOGY.....	6
1.4	SPECIAL ACCESSORIES.....	6
1.5	EQUIPMENT MODIFICATIONS.....	6
1.6	TEST FACILITY.....	6
2	SYSTEM TEST CONFIGURATION.....	7
2.1	EUT CONFIGURATION.....	7
2.2	EUT EXERCISE.....	7
2.3	TEST PROCEDURE.....	7
2.4	CONFIGURATION OF TESTED SYSTEM.....	8
3	SUMMARY OF TEST RESULTS.....	9
4	TEST SYSTEM UNCERTAINTY.....	10
5	RADIATED EMISSION TEST.....	11
5.1	MEASUREMENT PROCEDURE.....	11
5.2	TEST SET-UP (BLOCK DIAGRAM OF CONFIGURATION).....	11
5.3	MEASUREMENT EQUIPMENT USED.....	12
5.4	RADIATED EMISSION LIMIT.....	12
5.5	MEASUREMENT RESULT.....	14
5.6	RADIATED MEASUREMENT PHOTOS:.....	19
6	FREQUENCY STABILITY MEASUREMENT.....	20
6.1	FREQUENCY STABILITY LIMITS.....	20
6.2	MEASUREMENT INSTRUMENTS LIST.....	20
6.3	TEST PROCEDURE.....	20
6.4	EUT OPERATING CONDITIONS.....	20
6.5	TEST RESULTS.....	21
7	EMISSION BANDWIDTH.....	22
7.1	EMISSION BANDWIDTH LIMIT.....	22
7.2	TEST INSTRUMENTS.....	22
7.3	TEST PROCEDURE.....	22
7.4	TEST SETUP.....	22
7.5	TEST RESULT.....	22
8	ANTENNA REQUIREMENT.....	24
8.1	RESULT.....	24

APPENDIX (Photos of EUT)

1 General Information

1.1 Product Description

Characteristics	Description
EUT:	Glass touch panel
Modulation:	ASK
Operating Frequency:	13.56MHz
Number of Channels:	1 channel
Antenna Type :	Internal Loop antenna
Input rating:	DC 24V 30mA
Power supply:	DC 24V
Antenna Gain	The antenna is permanently attached on PCB, no consideration of replacement. Please refer to internal Photos for details.

Note: for a more detailed features description, please refer to the manufacturer's specifications or the User's Manual.

1.2 Related Submittal(s) / Grant(s)

This submittal(s) (test report) is intended for FCC ID: 2AUCU-GP0011 filing to comply with Section 15.225 of the FCC Part 15, Subpart C Rules.

1.3 Test Methodology

Both conducted and radiated testing was performed according to the procedures in ANSI C63.10-2013. Radiated testing was performed at an antenna to EUT distance 3 meters.

1.4 Special Accessories

There is a USB cable with two ferrite cores in this submission.

1.5 Equipment Modifications

Not available for this EUT intended for grant.

1.6 Test Facility

Site Description
EMC Lab.

:

Accredited by CNAS, 2016.10.24
The certificate is valid until 2022.10.28
The Laboratory has been assessed and proved to be in compliance with CNAS-CL01:2006 (identical to ISO/IEC 17025:2005)
The Certificate Registration Number is L2291.

Accredited by TUV Rheinland Shenzhen 2016.5.19
The Laboratory has been assessed according to the requirements ISO/IEC 17025.

Accredited by FCC, August 03, 2017
Designation Number: CN1204
Test Firm Registration Number: 882943

Wireless Device ON laboratories recognized by Innovation, Science and Economic Development Canada, 2018.09.12
The CAB identifier is CN0008.

Accredited by A2LA, July 31, 2017
The Certificate Number is 4321.01.

Name of Firm : EMTEK(SHENZHEN)CO., LTD.
Site Location : Building 69, Majialong Industry Zone, Nanshan District, Shenzhen, Guangdong, China

2 System Test Configuration

2.1 EUT Configuration

The EUT configuration for testing is installed on RF field strength measurement to meet the Commissions requirement and operating in a manner which intends to maximize its emission characteristics in a continuous normal application.

2.2 EUT Exercise

The Transmitter was operated in the normal operating mode. The TX frequency was fixed which was for the purpose of the measurements.

2.3 Test Procedure

2.3.1 Conducted Emissions

The EUT is a placed on as turn table which is 0.8 m above ground plane. According to the requirements in Section 13.1.4.1 of ANSI C63.10-2013 Conducted emissions from the EUT measured in the frequency range between 0.15 MHz and 30 MHz using CISPR Quasi-Peak and average detector mode.

2.3.2 Radiated Emissions

The EUT is a placed on as turn table which is 0.8 m above ground plane. The turn table shall rotate 360 degrees to determine the position of maximum emission level. EUT is set 3m away from the receiving antenna which varied from 1m to 4m to find out the highest emission. And also, each emission was to be maximized by changing the polarization of receiving antenna both horizontal and vertical. In order to find out the max. emission, the relative positions of this transmitter(EUT) was tested according to the requirements in Section 13.1.4.1 of ANSI C63.10-2013.

2.4 Configuration of Tested System

Fig. 2-1 Configuration of Tested System



Table 2-1 Equipment Used in Tested System

Item	Equipment	Mfr/Brand	Model/Type No.	FCC ID	Note
1	Glass touch panel	Schneider	LSSMKH03RS	2AUCU-GP0011	<i>EUT</i>

Note:

- (1) Unless otherwise denoted as EUT in 『Remark』 column, device(s) used in tested system is a support equipment.

3 Summary of Test Results

FCC Rules	Description Of Test	Result
§15.207	AC Power Conducted Emission	N/A
§15.225(a)(b)(c), (d), §15.209	Radiated Emission	Complied
§15.225(e)	Frequency Stability	Complied
§15.203	Antenna Application	Complied
Note: The EUT is supplied by battery, there is no need for AC Power Conducted Emission test to be performed on this product.		

For Radiated: The EUT’s antenna was pre-tested under the following modes:

Test Mode	Description
Mode A	X-Y axis
Mode B	Y-Z axis
Mode C	X-Z axis

From the above modes, the worst case was found in Mode C. Therefore only the test data of the mode was recorded in this report.

4 TEST SYSTEM UNCERTAINTY

The following measurement uncertainty levels have been estimated for tests performed on the apparatus:

Parameter	Uncertainty
Radio Frequency	$\pm 1 \times 10^{-5}$
Maximum Peak Output Power Test	$\pm 1.0\text{dB}$
Conducted Emissions Test	$\pm 2.0\text{dB}$
Radiated Emission Test	$\pm 2.0\text{dB}$
Power Density	$\pm 2.0\text{dB}$
Occupied Bandwidth Test	$\pm 1.0\text{dB}$
Band Edge Test	$\pm 3\text{dB}$
All emission, radiated	$\pm 3\text{dB}$
Antenna Port Emission	$\pm 3\text{dB}$
Temperature	$\pm 0.5^\circ\text{C}$
Humidity	$\pm 3\%$

Remark: The coverage Factor (k=2), and measurement Uncertainty for a level of Confidence of 95%

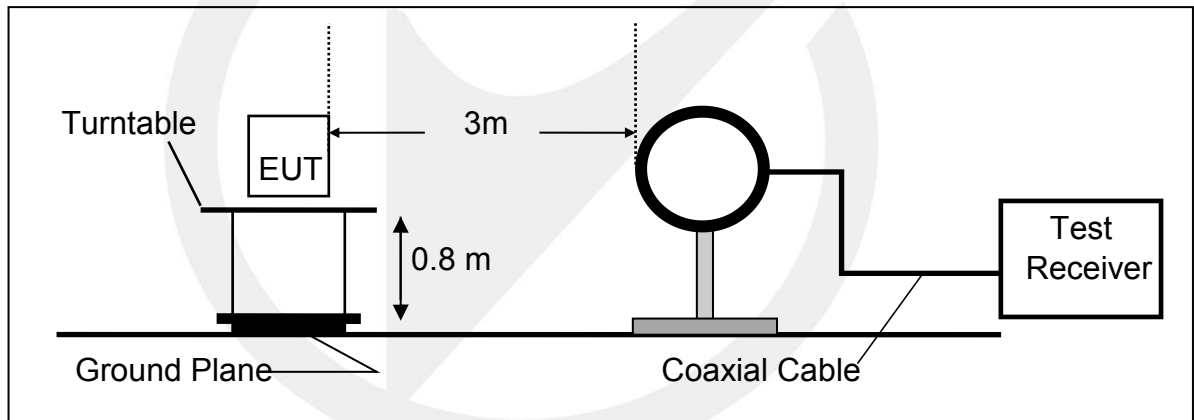
5 Radiated Emission Test

5.1 Measurement Procedure

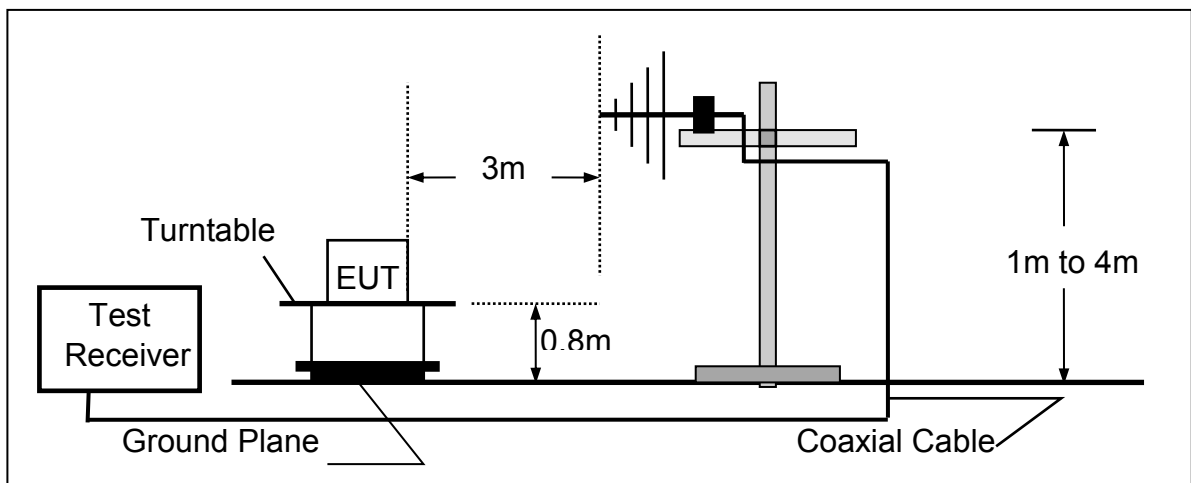
1. The EUT was placed on a turntable which is 0.8m above ground plane.
2. Maximum procedure was performed on the six highest emissions to ensure EUT compliance.
3. And also, each emission was to be maximized by changing the polarization of receiving antenna both horizontal and vertical.
4. Repeat above procedures until all frequency measured were complete.

5.2 Test SET-UP (Block Diagram of Configuration)

(A) Radiated Emission Test Set-Up, Frequency Below 30MHz



(B) Radiated Emission Test Set-Up, Frequency Below 1000MHz



5.3 Measurement Equipment Used

Item	Equipment	Manufacturer	Model No.	Serial No.	Characteristics	Last Cal.	Cal. Interval
1.	Test Receiver	Rohde & Schwarz	ESCI	1166.5950.03	9KHz-3GHz	05/22/2020	1 Year
2.	Loop Antenna	Schwarzbeck	FMZB 1519	012	9 KHz -30MHz	05/22/2020	1 Year
3.	Bilog Antenna	Schwarzbeck	VULB9163	000141	25MHz-2GHz	05/22/2020	1 Year
4.	Power Amplifier	HP	8447F	OPT H64	9 KHz -1300MHz	05/22/2020	1 Year
5.	Color Monitor	SUNSP0	SP-140A	N/A	--	05/22/2020	1 Year
6.	Single Line Filter	JIANLI	XL-3	N/A	--	05/22/2020	1 Year
7.	Single Phase Power Line Filter	JIANLI	DL-2X100B	N/A	--	05/22/2020	1 Year
8.	3 Phase Power Line Filter	JIANLI	DL-4X100B	N/A	--	05/22/2020	1 Year
9.	DC Power Filter	JIANLI	DL-2X50B	N/A	--	05/22/2020	1 Year
10.	Cable	Schwarzbeck	PLF-100	549489	9KHz-3GHz	05/22/2020	1 Year
11.	Cable	Rosenberger	CIL02	A0783566	9KHz-3GHz	05/22/2020	1 Year
12.	Cable	Rosenberger	RG 233/U	525178	9KHz-3GHz	05/22/2020	1 Year

5.4 Radiated Emission Limit

The emissions from an intentional radiator shall not exceed the field strength levels specified in the following table 15.209(a):

FCC Part 15.209				
Frequency (MHz)	Field Strength Limitation		Field Strength Limitation Frequency at 3m Measurement Distance	
	(uV/m)	Dist	(uV/m)	(dBuV/m)
0.009 – 0.490	2400 / F(KHz)	300m	10000 * 2400/F(KHz)	20log 2400/F(KHz) + 80
0.490 – 1.705	24000 / F(KHz)	30m	100 * 24000/F(KHz)	20log 24000/F(KHz) + 40
1.705 – 30.00	30	30m	100* 30	20log 30 + 40
30.0 – 88.0	100	3m	100	20log 100
88.0 – 216.0	150	3m	150	20log 150
216.0 – 960.0	200	3m	200	20log 200
Above 960.0	500	3m	500	20log 500

FCC Part 15.225(a)/(b)/(c)				
Frequency (MHz)	Field Strength Limitation		Field Strength Limitation Frequency tion at 3m Measurement Dist	
	(uV/m)	Dist	(uV/m)	(dBuV/m)
13.110 – 13.410	106	30 m	106*100	80.5
13.410 – 13.553	334	30 m	334*100	90.5
13.553 – 13.567	15,848	30 m	15,848*100	124
13.567 – 13.710	334	30 m	334*100	90.5
13.710 – 14.010	106	30 m	106*100	80.5

15.205 Restricted bands of operation

MHz	MHz	MHz	GHz
0.090 - 0.110	16.42 - 16.423	399.9 - 410	4.5 - 5.15
¹ 0.495 - 0.505	16.69475 - 16.69525	608 - 614	5.35 - 5.46
2.1735 - 2.1905	16.80425 - 16.80475	960 - 1240	7.25 - 7.75
4.125 - 4.128	25.5 - 25.67	1300 - 1427	8.025 - 8.5
4.17725 - 4.17775	37.5 - 38.25	1435 - 1626.5	9.0 - 9.2
4.20725 - 4.20775	73 - 74.6	1645.5 - 1646.5	9.3 - 9.5
6.215 - 6.218	74.8 - 75.2	1660 - 1710	10.6 - 12.7
6.26775 - 6.26825	108 - 121.94	1718.8 - 1722.2	13.25 - 13.4
6.31175 - 6.31225	123 - 138	2200 - 2300	14.47 - 14.5
8.291 - 8.294	149.9 - 150.05	2310 - 2390	15.35 - 16.2
8.362 - 8.366	156.52475 - 156.52525	2483.5 - 2500	17.7 - 21.4
8.37625 - 8.38675	156.7 - 156.9	2690 - 2900	22.01 - 23.12
8.41425 - 8.41475	162.0125 - 167.17	3260 - 3267	23.6 - 24.0
12.29 - 12.293	167.72 - 173.2	3332 - 3339	31.2 - 31.8
12.51975 - 12.52025	240 - 285	3345.8 - 3358	36.43 - 36.5
12.57675 - 12.57725	322 - 335.4	3600 - 4400	(²)

- Remark 1. Emission level in dBuV/m=20 log (uV/m)
- : 2. Measurement was performed at an antenna to the closed point of EUT distance of meters.
3. Only spurious frequency is permitted to locate within the Restricted Bands specified in provision of ξ 15.205, and the emissions located in restricted bands also comply with 15.209 limit.

5.5 Measurement Result

Operation Mode: TX Mode Test Date : May 27, 2020
 Frequency Range: 9kHz~30MHz Temperature : 28°C
 Test Result: PASS Humidity : 65 %
 Measured Distance: 3m Test By: KYO

Freq. (MHz)	Ant.Pol. H/V	Emission Level (dBuV/m)	Limit 3m (dBuV/m)	Over (dB)	Note
3.76	V	34.08	69.54	-35.46	QP
9.92	V	31.24	69.54	-38.30	QP
15.05	V	35.57	69.54	-33.97	QP
16.54	V	35.03	69.54	-34.51	QP
20.60	V	37.51	69.54	-32.03	QP
24.82	V	41.25	69.54	-28.29	QP
4.02	H	32.25	69.54	-37.29	QP
10.52	H	33.36	69.54	-36.18	QP
10.47	H	37.21	69.54	-32.33	QP
17.36	H	37.92	69.54	-31.62	QP
21.00	H	34.43	69.54	-35.11	QP
24.60	H	48.40	69.54	-21.14	QP



Site Chamber #1

Polarization: **Horizontal**

Temperature: 26

Limit: (RE)FCC PART 15 C 3m

Power: DC 24V

Humidity: 55 %

Mode: 13.56MHz

Note:

No.	Mk.	Freq. MHz	Reading Level dBuV	Correct Factor dB	Measure- ment dBuV/m	Limit dBuV/m	Over dB	Antenna Height cm	Table Degree degree	Comment
1		32.0667	38.88	-19.00	19.88	40.00	-20.12	QP		
2		55.2200	35.84	-15.97	19.87	40.00	-20.13	QP		
3		130.3790	49.80	-21.34	28.46	43.50	-15.04	QP		
4		179.3800	45.71	-19.49	26.22	43.50	-17.28	QP		
5		278.3200	43.42	-14.66	28.76	46.00	-17.24	QP		
6	*	424.7900	41.48	-10.41	31.07	46.00	-14.93	QP		

*:Maximum data x:Over limit !:over margin

Operator: HUANG



Site Chamber #1

Polarization: **Vertical**

Temperature: 26

Limit: (RE)FCC PART 15 C 3m

Power: DC 24V

Humidity: 55 %

Mode: 13.56MHz

Note:

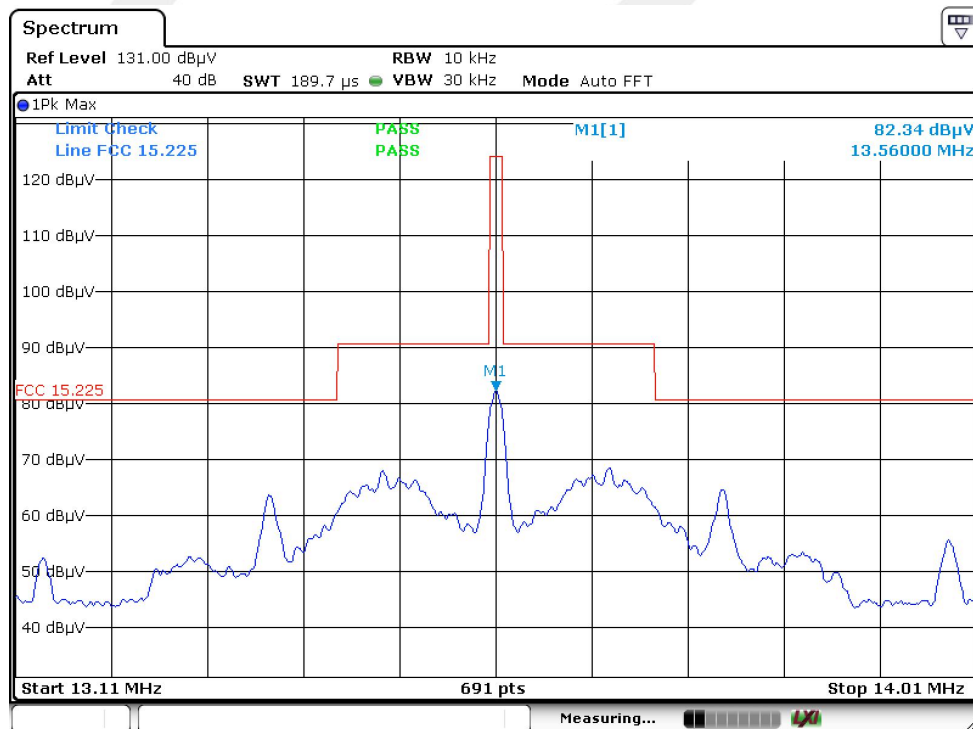
No.	Mk.	Freq.	Reading Level	Correct Factor	Measurement	Limit	Over	Antenna Height	Table Degree	
		MHz	dBuV	dB	dBuV/m	dBuV/m	dB	cm	degree	Comment
1		40.6700	35.71	-16.57	19.14	40.00	-20.86	QP		
2		59.2323	35.34	-16.94	18.40	40.00	-21.60	QP		
3		127.0000	48.11	-21.18	26.93	43.50	-16.57	QP		
4		182.5592	44.18	-19.19	24.99	43.50	-18.51	QP		
5		384.0500	38.45	-11.28	27.17	46.00	-18.83	QP		
6	*	951.5000	34.11	-0.48	33.63	46.00	-12.37	QP		

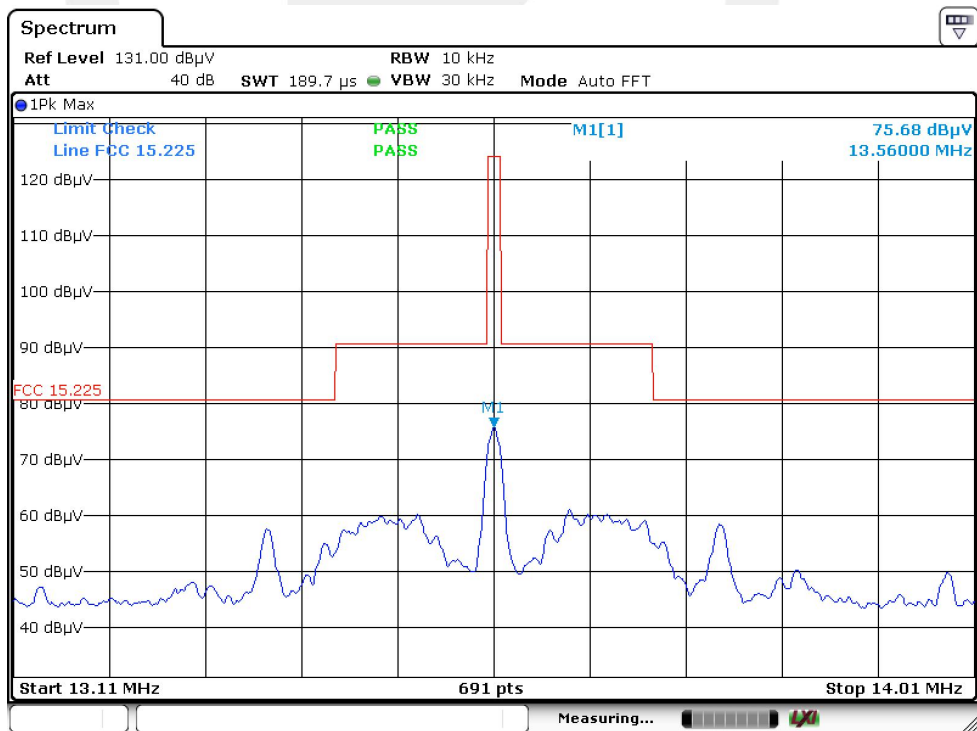
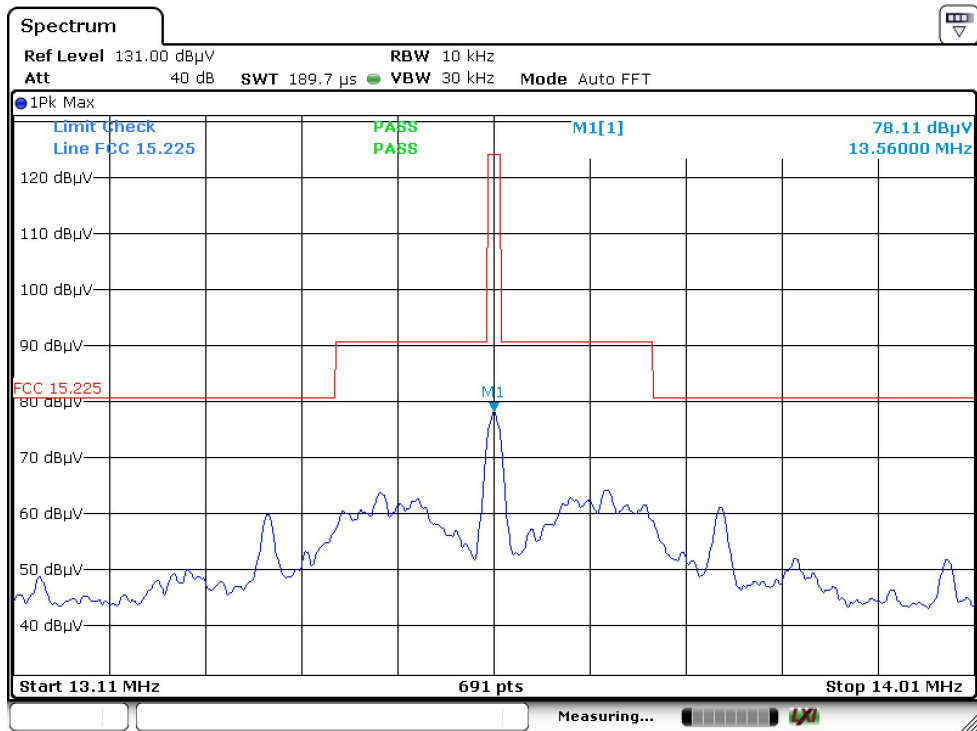
*:Maximum data x:Over limit !:over margin

Operator: HUANG

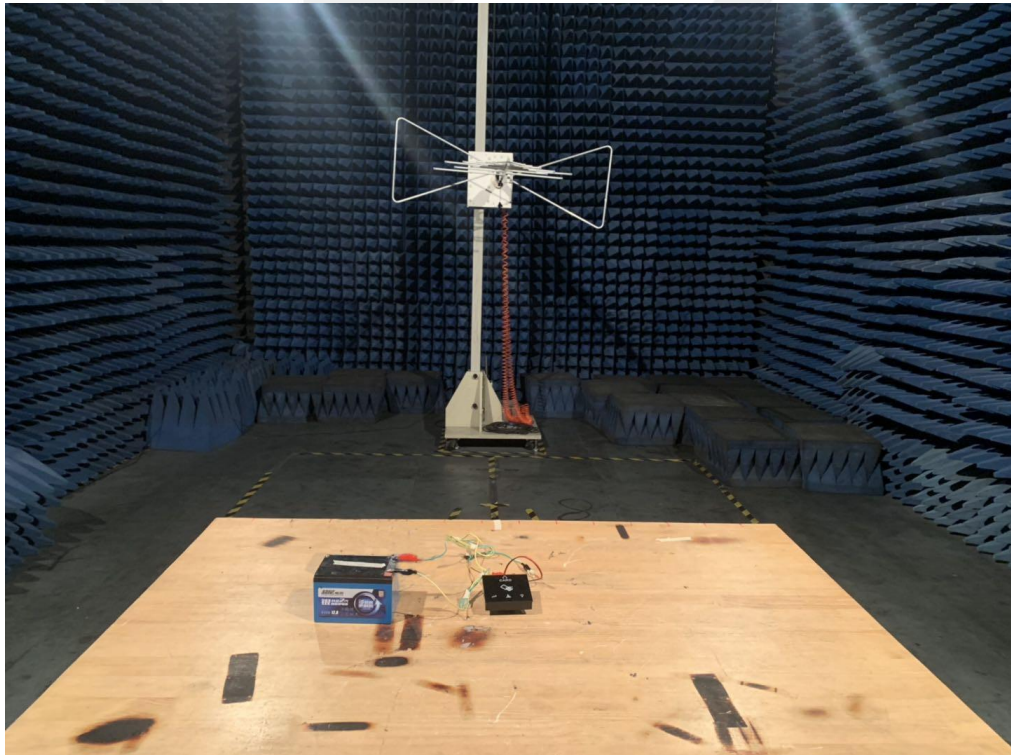
Operation Mode:	TX Mode	Test Date :	June 26, 2020
Frequency Range:	13.560 MHz	Temperature :	28°C
Test Result:	PASS	Humidity :	65 %
Measured Distance:	3m	Test By:	KYO

Freq. (MHz)	Ant.Pol.	Emission Level (dBuV/m)	Limit 3m (dBuV/m)	Over (dB)
13.56	X	82.34	124	-41.66
13.56	Y	78.11	124	-45.89
13.56	Z	75.68	124	-48.32





5.6 Radiated Measurement Photos:



6 FREQUENCY STABILITY MEASUREMENT

6.1 FREQUENCY STABILITY LIMITS

FCC Part 15.225(e)

the frequency tolerance of the carrier signal shall be maintained within +/-0.01% of the operating frequency over a temperature variation of -20 degrees to + 50 degrees C at normal supply voltage, and for a variation in the primary supply voltage from 85% to 115% of the rated supply voltage at a temperature of 20 degrees C. For battery operated equipment, the equipment tests shall be performed using a new battery.

6.2 MEASUREMENT INSTRUMENTS LIST

EQUIPMENT TYPE	MFR	MODEL NUMBER	SERIAL NUMBER	Characteristics	LAST CAL.	CAL DUE.
Spectrum Analyzer	Rohde & Schwarz	FSV30	1321.3008K	10Hz-30GHz	05/22/2020	05/21/2021
Coaxial Cable	CDS	79254	46107086	10Hz-30GHz	05/22/2020	05/21/2021
Antenna Connector	ARTHUR-YANG	2244-N1TG1	N/A	10Hz-30GHz	05/22/2020	05/21/2021

Remark: The temporary antenna connector is soldered on the PCB board in order to perform conducted tests and this temporary antenna connector is listed in the equipment list.

6.3 TEST PROCEDURE

- The equipment under test was connected to an external DC power supply and the RF output was connected to a frequency counter via feed through attenuators. The EUT was placed inside the temperature chamber. After the temperature stabilized for approximately 20 minutes, the frequency of the output signal was recorded from the counter.
- At room temperature (25±5°C), an external variable DC power supply was connected to the EUT. The frequency of the transmitter was measured for 115%, 100% and 85% of the nominal operating input voltage.
- For the actual test configuration, please refer to the related Item –EUT Test Photos.

6.4 EUT OPERATING CONDITIONS

The EUT tested system was configured as the statements of 4.1.6 Unless otherwise a special operating condition is specified in the follows during the testing.

6.5 TEST RESULTS

E.U.T :	Glass touch panel	Test Mode :	TX Mode
Test Voltage :	DC 24V		

Frequency Stability Versus Environmental Temperature					
Temperature (°C)	Voltage (Vac)	Frequency (MHz)	Freq Error (ppm)	Limit (ppm)	Results
-20	DC24V	13.5600200	1.47	100	PASS
-10	DC24V	13.5600200	1.47	100	PASS
0	DC24V	13.5600400	2.95	100	PASS
10	DC24V	13.5601200	8.85	100	PASS
20	DC24V	13.5601100	8.11	100	PASS
30	DC24V	13.5601300	9.59	100	PASS
40	DC24V	13.5599800	1.47	100	PASS
50	DC24V	13.5602400	17.70	100	PASS

Frequency Stability Versus Environmental Temperature

Frequency Stability Versus Input Voltage					
Temperature (°C)	Voltage (Vdc)	Frequency (MHz)	Freq Error (ppm)	Limit (ppm)	Results
25	21.6V	13.5601200	8.85	100	PASS
25	24V	13.5601500	11.06	100	PASS
25	26.4V	13.5602600	19.17	100	PASS

Frequency Stability Versus Input Voltage

7 EMISSION BANDWIDTH

7.1 Emission Bandwidth Limit

Intentional radiators must be designed to ensure that the 20 dB bandwidth of the emissions in the specific band (13.553 – 13.567 MHz).

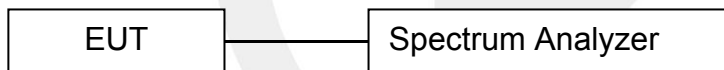
7.2 TEST INSTRUMENTS

Refer a test equipment and calibration data table in this test report.

7.3 TEST PROCEDURE

The bandwidth of the fundamental frequency was measured by spectrum analyzer with 3kHz RBW and 10kHz VBW. The 20dB bandwidth is defined as the total spectrum the power of which is higher than peak power minus 20dB.

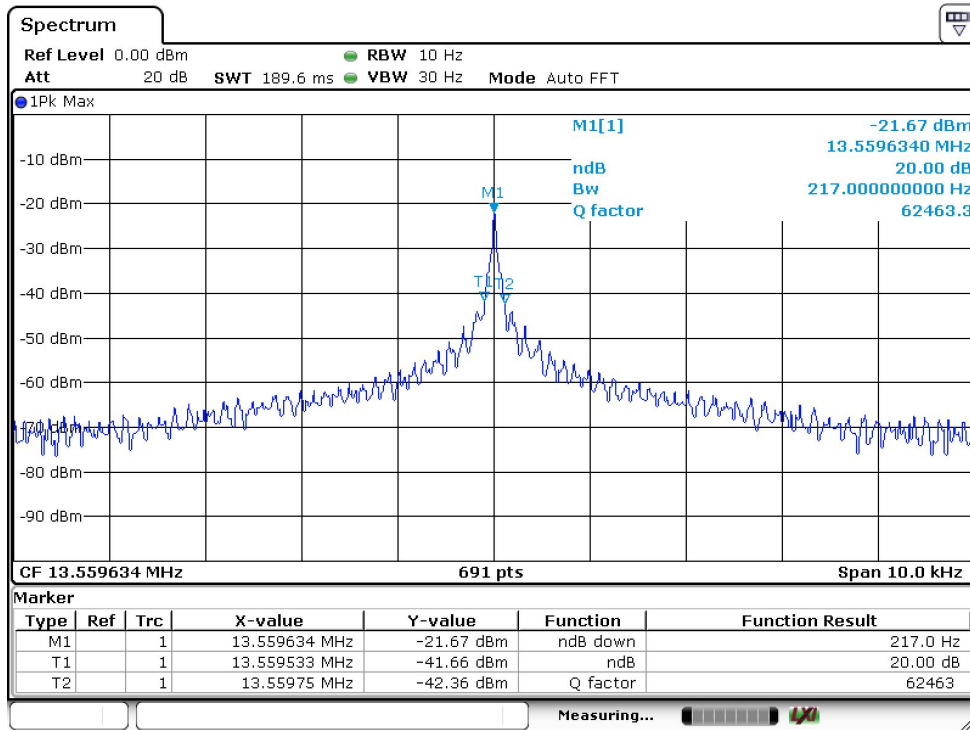
7.4 Test Setup



7.5 Test Result

Frequency (MHz)	20dB Bandwidth (kHz)	Results
13.56	0.217	PASS

BANDWIDTH TEST PLOT



8 ANTENNA REQUIREMENT

The EUT'S antenna is met the requirement of FCC part 15C section 15.203.

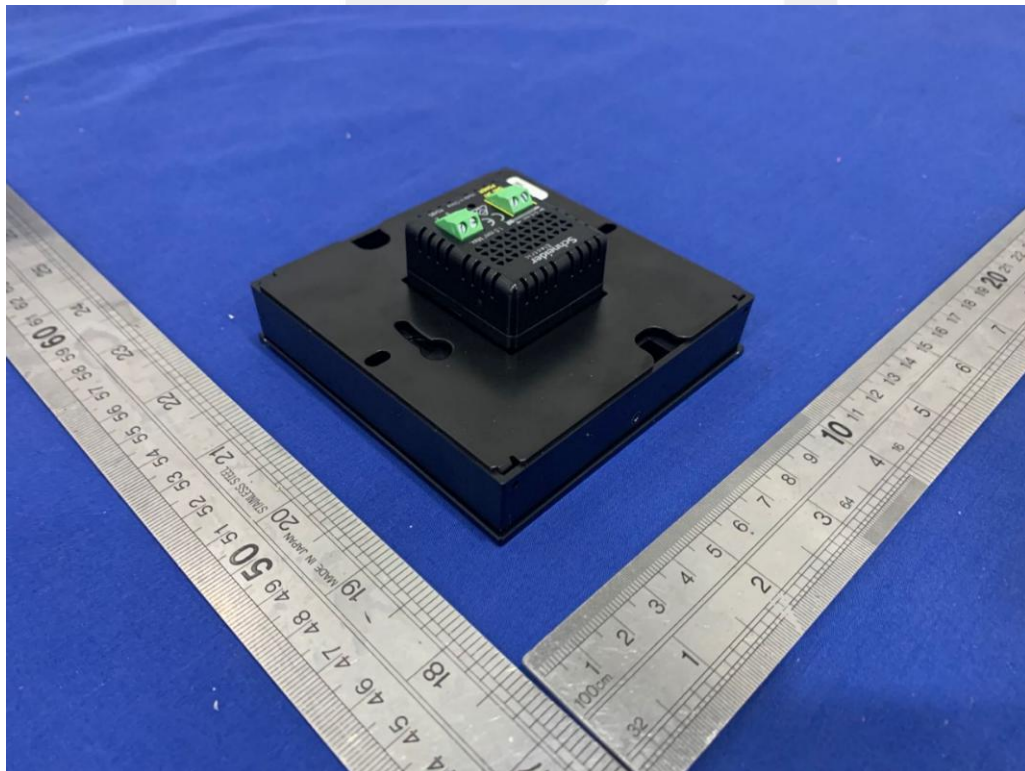
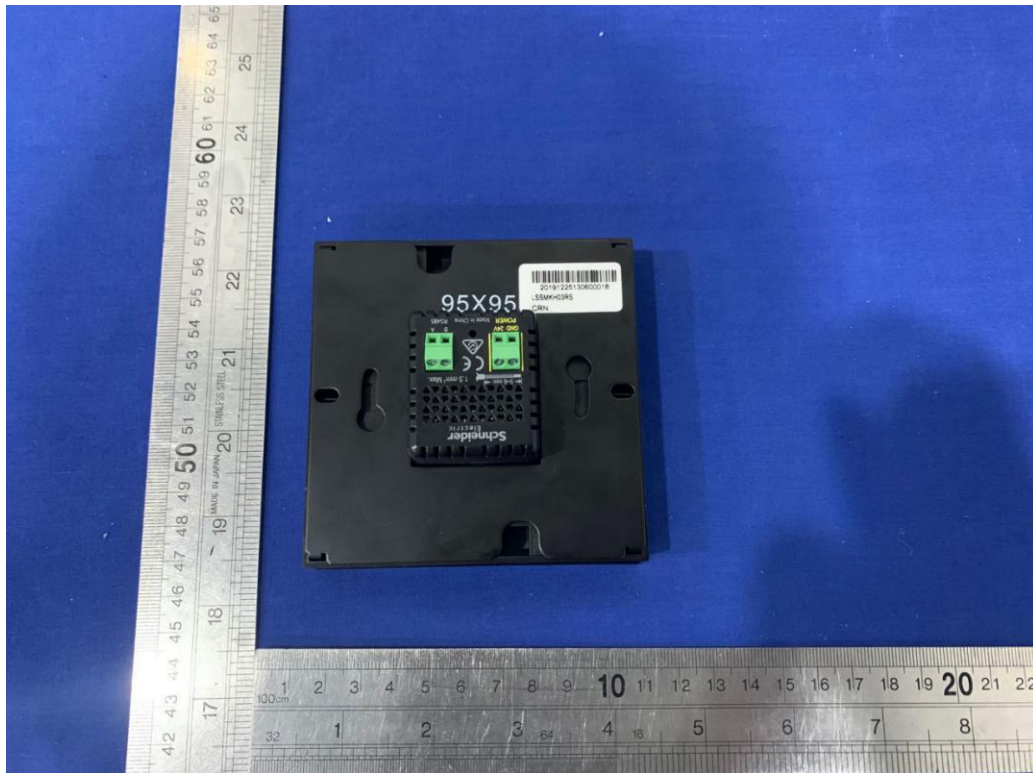
8.1 Result

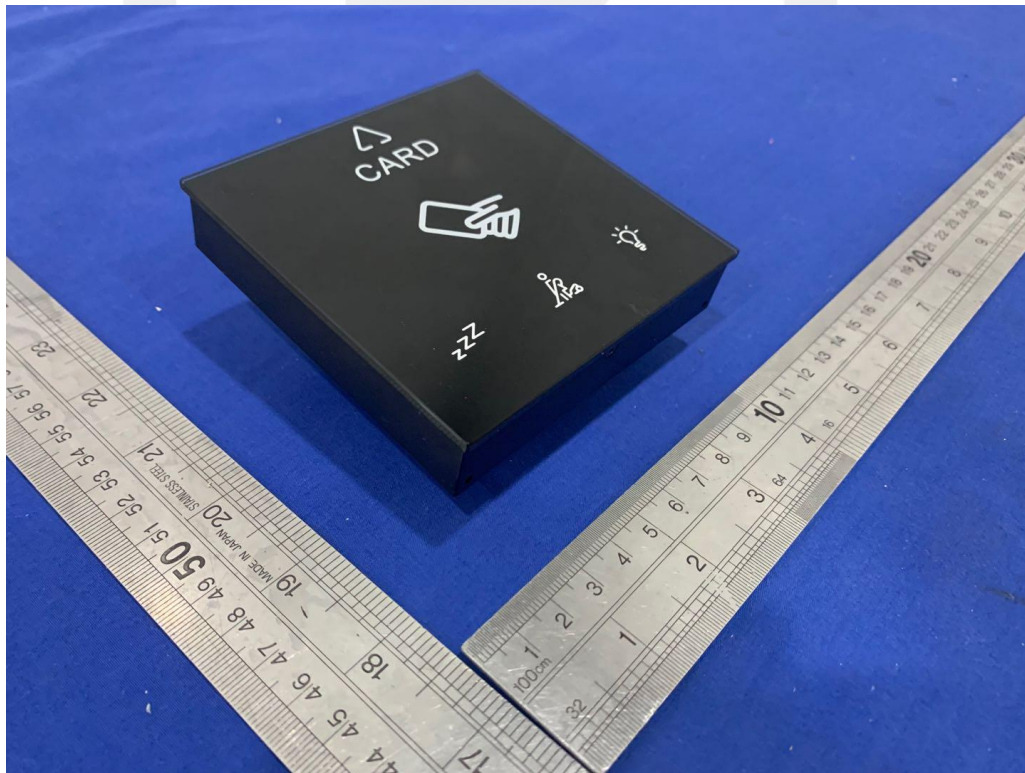
The EUT's antenna used an inter Loop Antenna and integral on the PCB.
The antenna is permanently attached on PCB, no consideration of replacement. Please refer to internal Photos for details. So it meets the requirement.

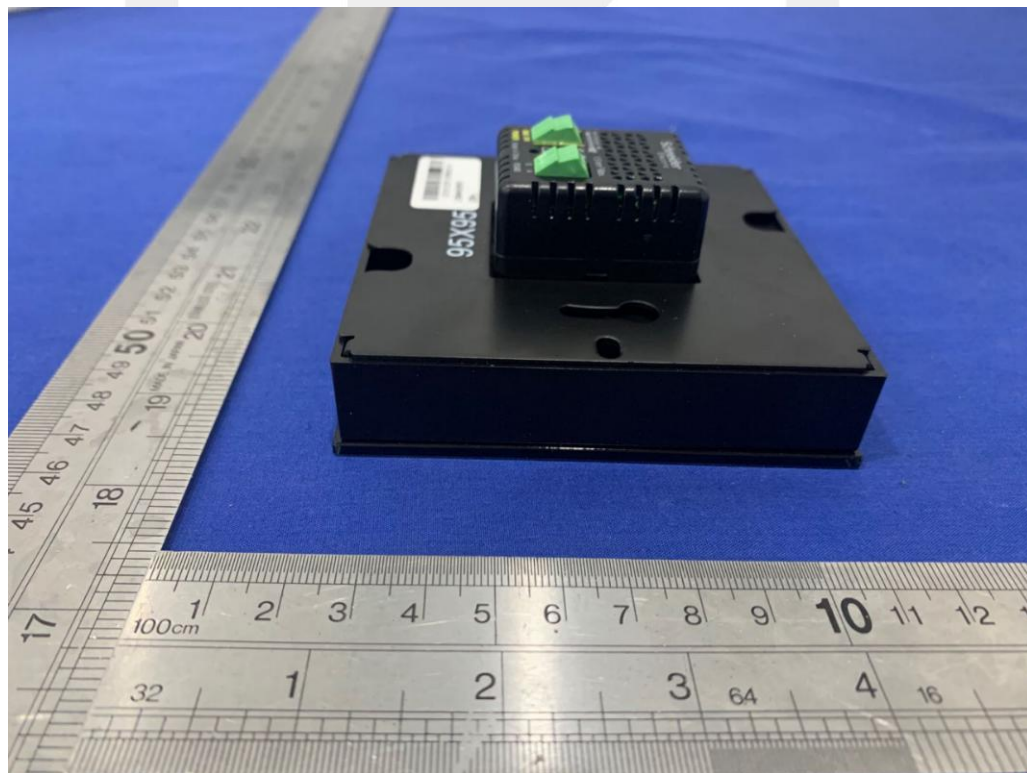
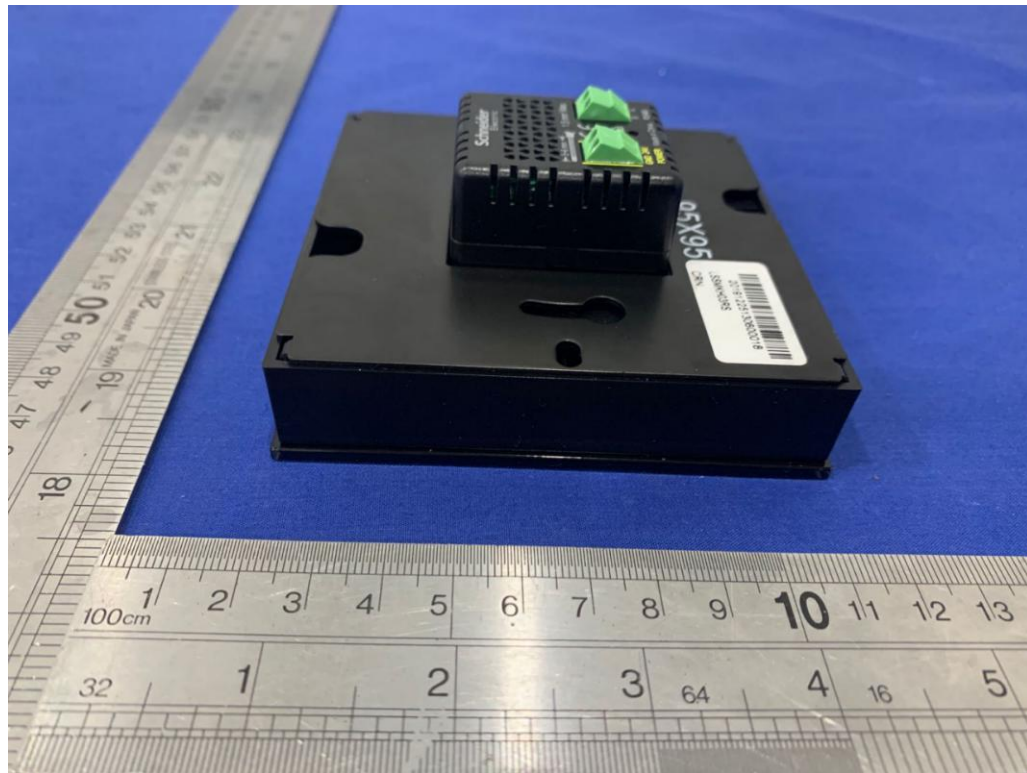


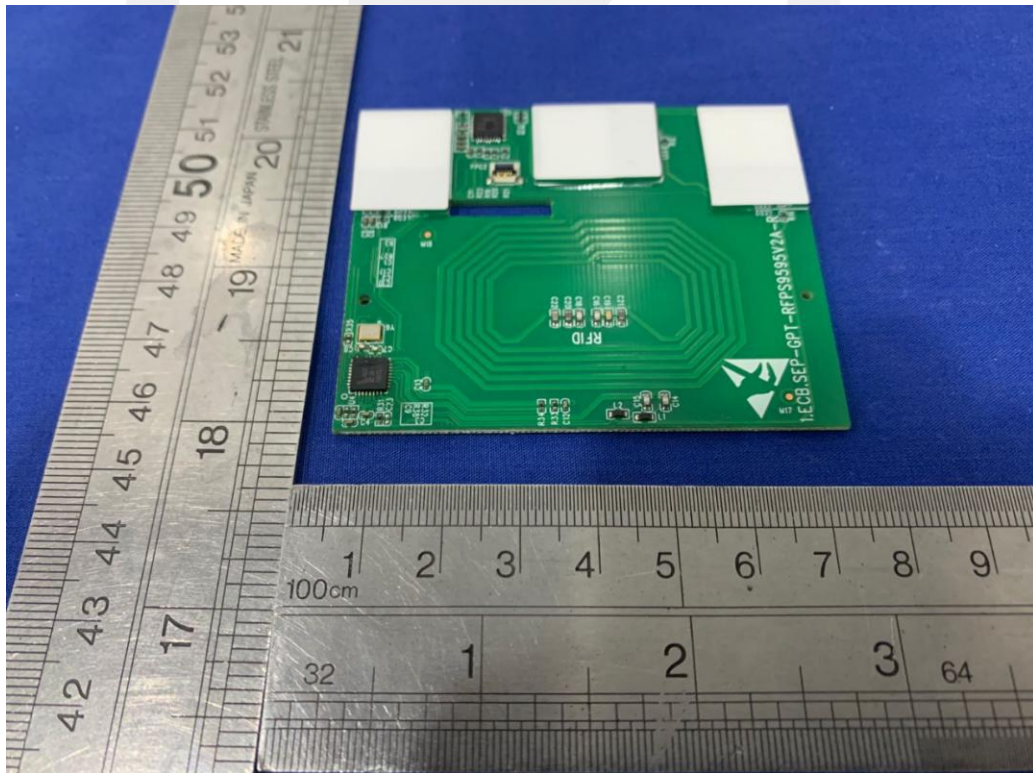
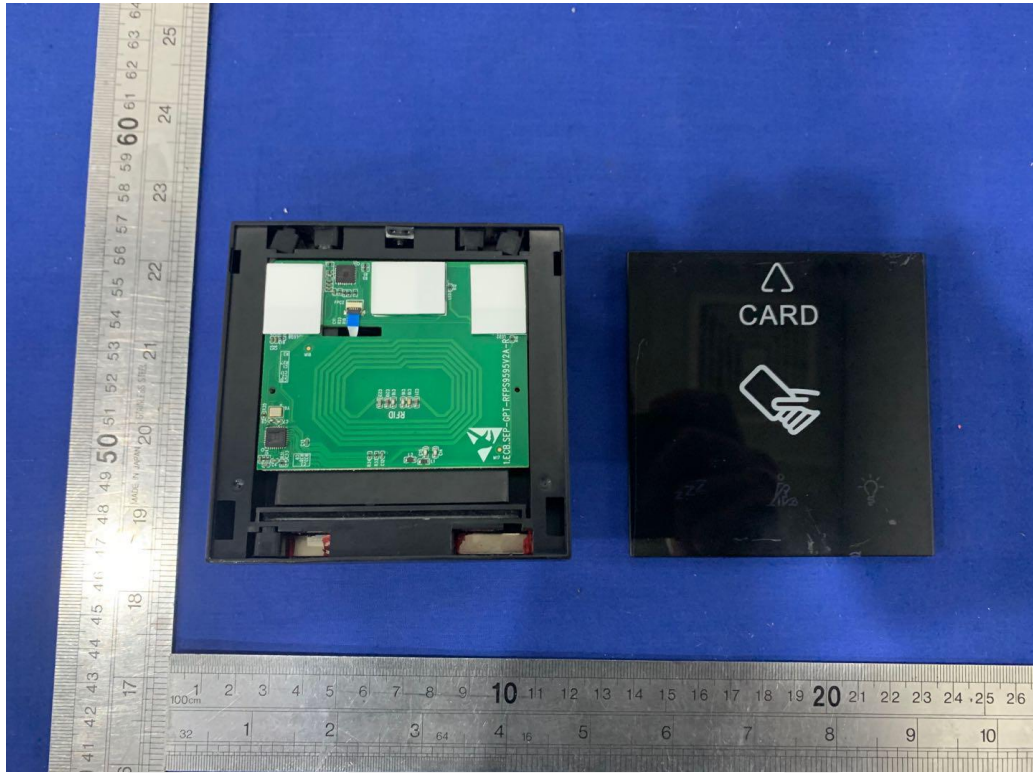


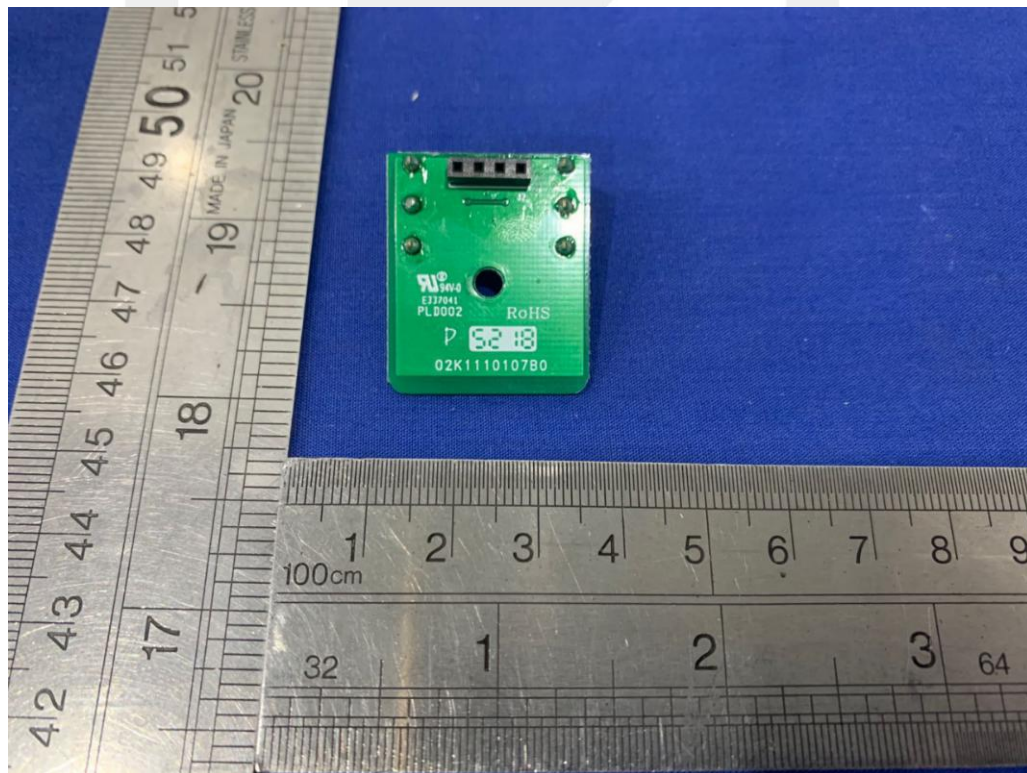
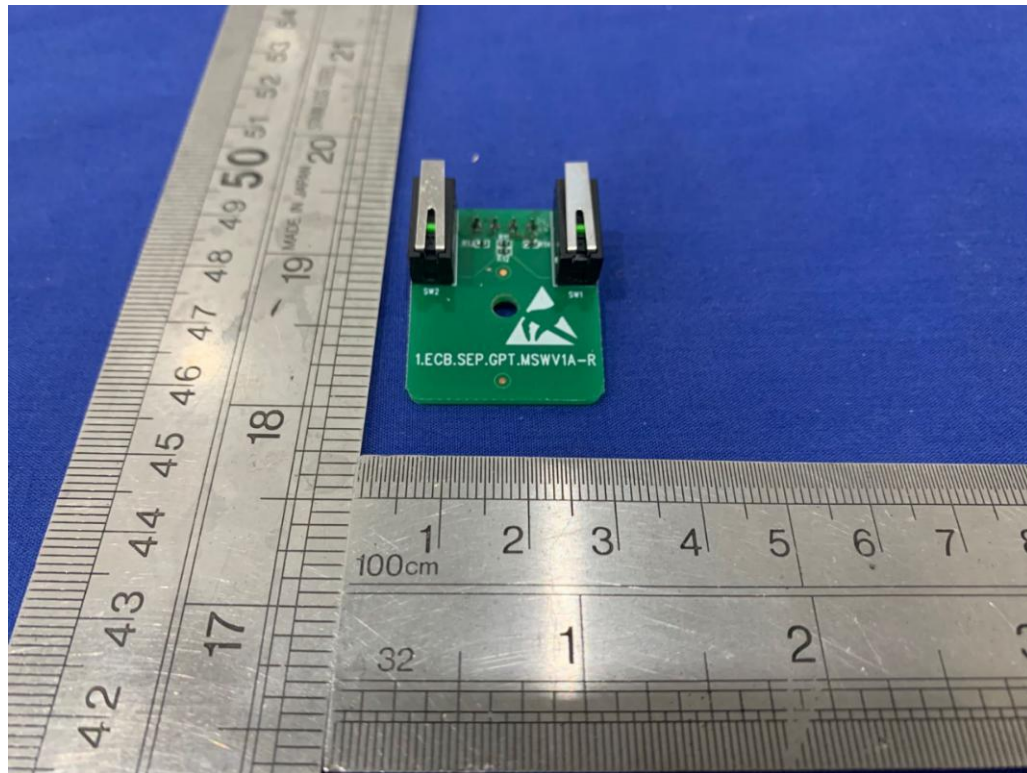
APPENDIX I (Photos of EUT)

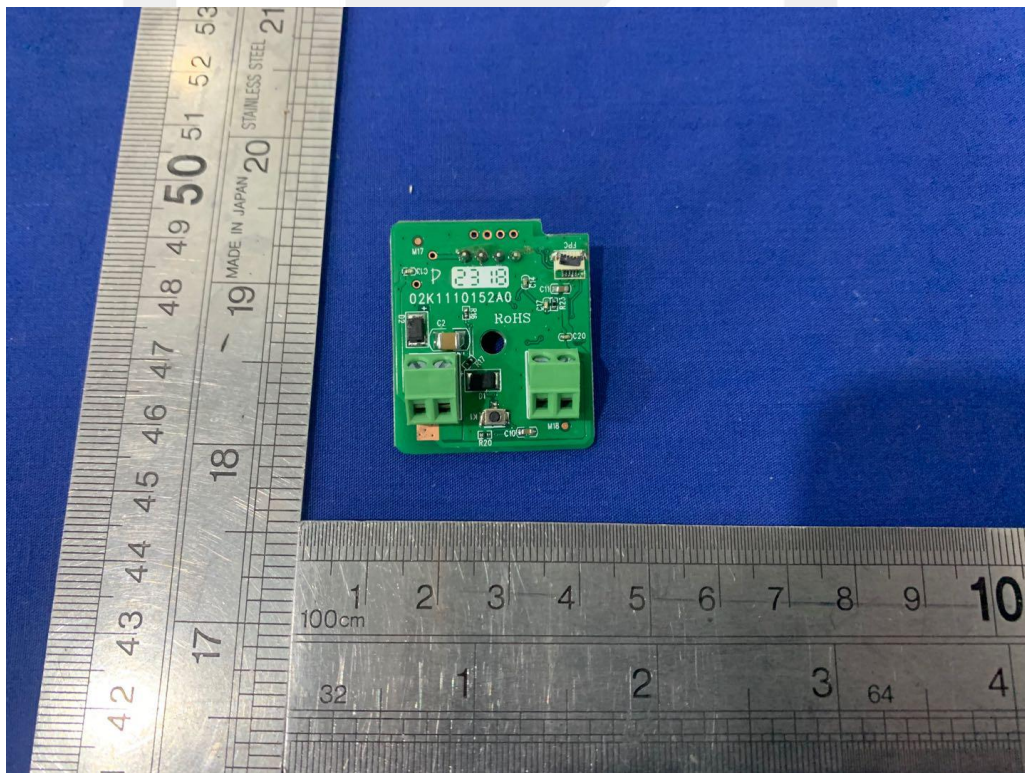
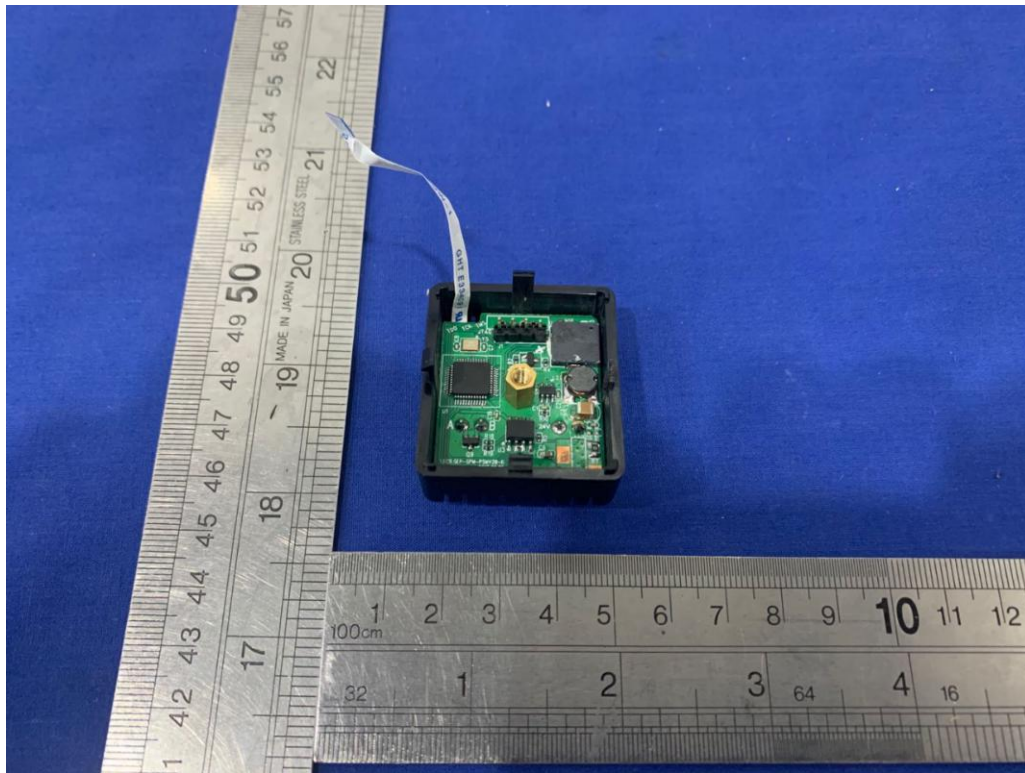


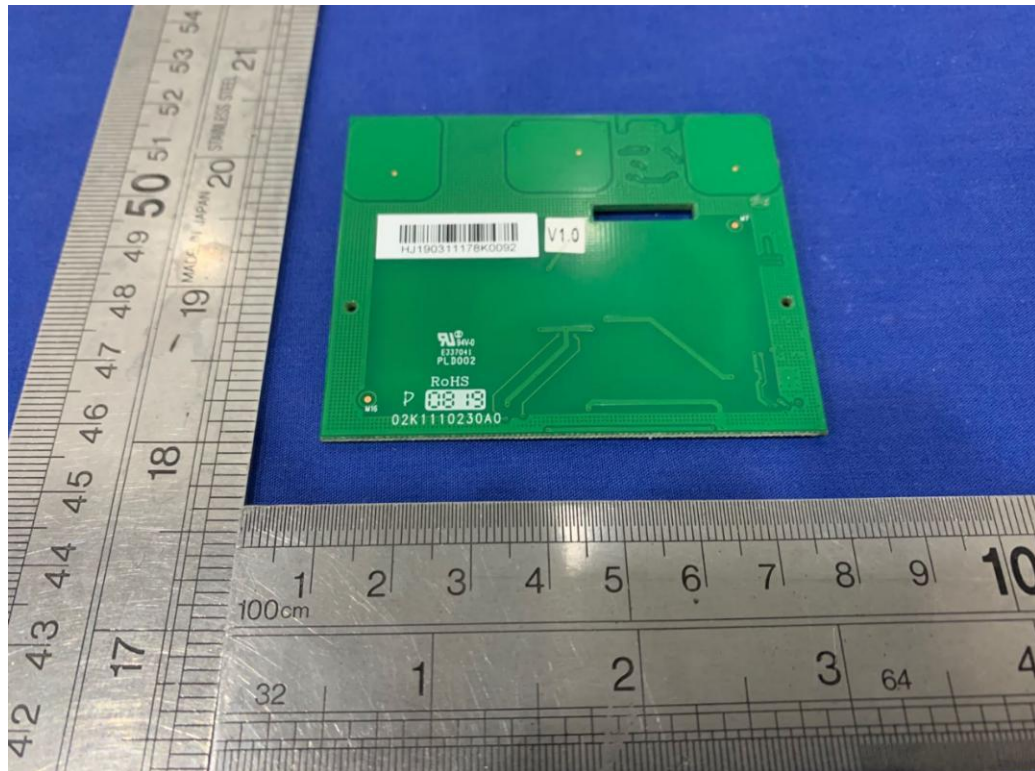












-----END OF REPORT-----

声明 Statement

1. 本报告无授权批准人签字及“检验报告专用章”无效；
This report will be void without authorized signature or special seal for ON report.
2. 未经许可本报告不得部分复制；
This report shall not be copied partly without authorization.
3. 本报告的检测结果仅对送测样品有效，委托方对样品的代表性和资料的真实性负责；
The test results or observations are applicable only to tested sample. Client shall be responsible for representativeness of the sample and authenticity of the material.
4. 本检测报告中检测项目标注有特殊符号则该项目不在资质认定范围内，仅作为客户委托、科研、教学或内部质量控制等目的使用；
The observations or tests with special mark fall outside the scope of accreditation, and are only used for purpose of commission, research, training, internal quality control etc.
5. 本检测报告以实测值进行符合性判定，未考虑不确定度所带来的风险，本实验室不承担相关责任，特别约定、标准或规范中有明确规定的除外；
The test results or observations are provided in accordance with measured value, without taking risks caused by uncertainty into account. Without explicit stipulation in special agreements, standards or regulations, EMTEK shall not assume any responsibility.
6. 对本检测报告若有异议，请于收到报告之日起 20 日内提出；
Objections shall be raised within 20 days from the date receiving the report.