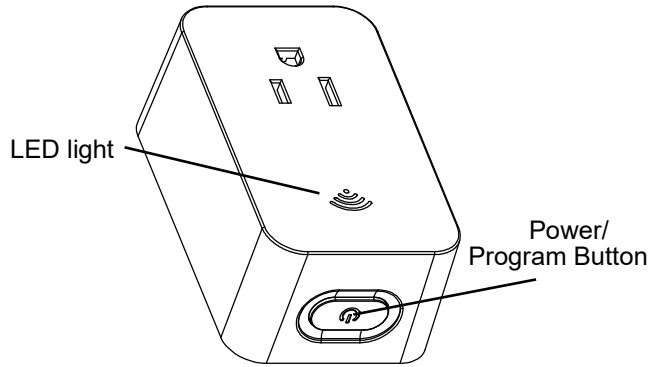


INSTALLATION INSTRUCTIONS

SQR62101WHW WI-FI 15A PLUG-IN OUTLET WH



◆ SPECIFICATIONS

Voltage.....	125V~60Hz
Resistive.....	15A
Motor.....	1/2 HP
Tungsten.....	800W
Electronic Ballast.....	.5A
Protocol.....	IEEE 802.11b/g/n
Wireless Type.....	2.4GHz
System Requirements.....	Android 4.1 or higher, iOS 8 or higher
Operating Temperature.....	32°F~104°F(0°C~40°C) (type 1.B operating control)

◆ FEATURES

- You can control lights, fans, humidifiers, Air conditioner, and any small appliances in accordance with the Smart Plug's specifications.
- You can Turn your devices on or off at any time or any where have Internet using the free SE Wiser App on your smartphone.
- You can efficiently conserve energy and save money while using this Smart Plugs.
- Compatible with the Amazon Echo, the free Tuya app compatible with any Android (4.1 and higher) or iOS (iOS 8 and higher) smartphone.

◆ DESCRIPTION

The SQR62101WHW Plug is our industry's first WIFI Smart Plug outlet, that can make our life more convenient. When the control devices connected to the Smart Plug, whenever or wherever you have Internet with the free SE Wiser app on your smartphone or tablets to control your device on and off or according to your specific schedules to simulate occupancy or countdown timer enhances safety when you are away from home.

◆ MEASURE THE ENERGY USAGE

The SQR62101WHW Wifi smart plug outlet enables you to measure the energy usage of your appliance. When added to SE Wiser App, it can display actual consumption(in W) and the accumulated power used (in kWh) in the SE Wiser App.

◆ INITIAL SETUP

1. Download SE Wiser app from the App Store or Google Play.

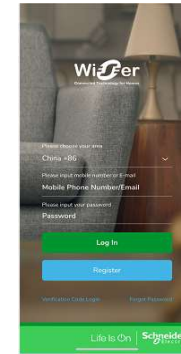


2. Connect mobile device to your 2.4GHz WIFI network, pls note this Smart plug can only connect to 2.4GHz network.

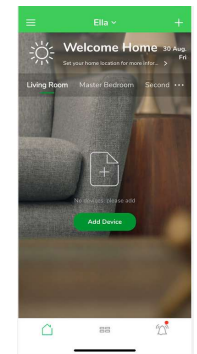


3. Launch SE Wiser and follow the in-app instructions to connect the Smart Plug to your network.

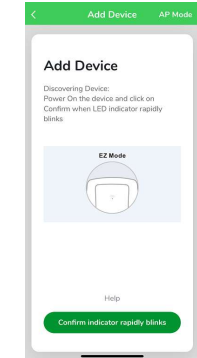
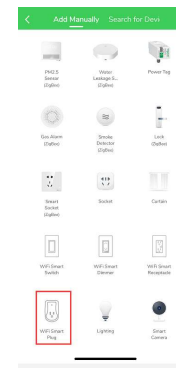
- a. Login the SE Wiser



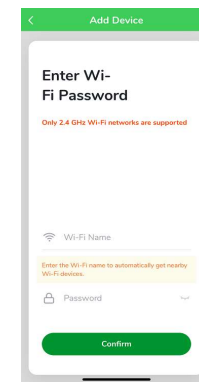
- b. Click the button “+”



- c. Select the "WIFI Smart Plug" d. Click the bottom button



- e. Enter your Wifi password

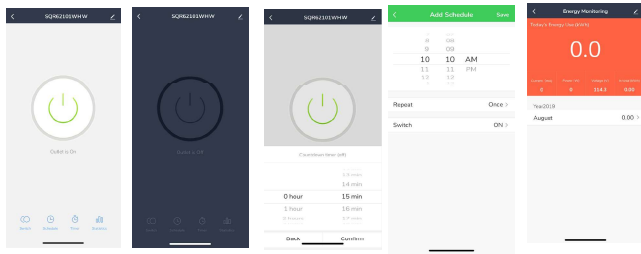


- f. Finished



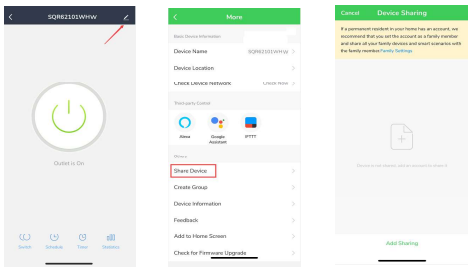
INSTALLATION INSTRUCTIONS

4. When the device is finished add, this WIFI Smart Plug can be opened, closed, countdown ,making weekly plan and can check the electric quantity.

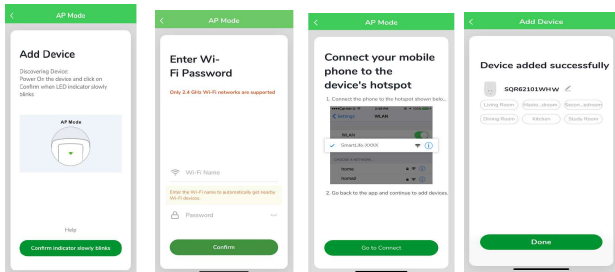


Please Note:

1. In the process of adding device, you must correctly select the router's WIFI device name and fill in the correct WIFI password, otherwise the device will not be able to add successfully.
2. This Smart Plug can only be paired with one phone device. If you want multiple phones to control the WIFI Smart Plug, click below place then chose the " Device Sharing".



3. When the device fail to add in the App, please try to enter the AP mode. Before enter the AP mode please press and hold the button 10 times , then the LED indicator in green and slowly blinks.



◆ OPERATION

- Press the button, power on then the LED(Blue) turned on.
- Press the button again, power off then the LED turned off.
- Press and hold (for 5 seconds) until the Wi-Fi LED quick blinks Green to initiate the App-Config process.
- Press and hold (for 5 seconds) until the Wi-Fi LED blinks green to factory reset this Smart Plug.

◆ FCC COMPLIANCE STATEMENT

Federal Communication Commission Interference Statement

The equipment has been tested and found to comply with the limits for a class B Digital Device, pursuant to part 15 of the FCC Rules. These limits are designed to provide reasonable protection against harmful interference in a residential installation. This equipment uses, generates and can radiate radio frequency energy and, if not installed and used in accordance with the instruction, may cause harmful interference to radio communication. However, there is no guarantee that interference will not occur in a particular installation. If this equipment does cause harmful interference to radio or television reception, which can be determined by turning the equipment off and on, the user is encouraged to try to correct the interference by one or more of the following measures:

- Reorient or relocate the receiving antenna.
- Increase the separation between the equipment and receiver.
- Connect the equipment into an outlet on a circuit different from that to which the receiver is connected.
- Consult the dealer or an experienced radio/TV technician for help.

FCC Caution:

This device complies with Part 15 of the FCC Rules. Operation is subject to the following two conditions:

1. This device may not cause harmful interference, and 2. This device must accept any interference received, including interference that may cause undesired operation.

RF Exposure: A distance of 20 cm shall be maintained between the antenna uncontrolled environment. This equipment should be installed and operated with minimum distance 20cm between the radiator & your body. and users, and the transmitter module may not be co-located with any other transmitter or antenna.

Caution: Any changes or modifications not expressly approved by the party responsible for compliance could void the user's authority to operate this equipment.

◆ LED INDICATION

Quick Blinking Green: Connecting to the network.

Slow Blinking Green: AP mode.

Green bright after 2 seconds off: Connected to the network.

Sold Green: Network normaly or in standby mode.

Solid Blue: The WIFI Smart Plug is switched on.

Off: The WIFI Smart Plug is switched off.

◆ WARRANTY INFORMATION

Our company warranties this product to be free of defects in materials and workmanship for a period of two(2) years. There are no obligations or liabilities on the part of our company for consequential damages arising out of, or in connection with, the use or performance of this product or other indirect damages with respect to loss of property, revenue or profit, or cost of removal, installation or re-installation.

Aug, 2019

ISED Statement

This device contains licence-exempt transmitter(s)/receiver(s) that comply with Innovation, Science and Economic Development Canada's licence-exempt RSS(s). Operation is subject to the following two conditions:

- 1. This device may not cause interference.*
- 2. This device must accept any interference, including interference that may cause undesired operation of the device.*

L'émetteur/récepteur exempt de licence contenu dans le présent appareil est conforme aux CNR d'Innovation, Sciences et Développement économique Canada applicables aux appareils radio exempts de licence. L'exploitation est autorisée aux deux conditions suivantes :

- 1. L'appareil ne doit pas produire de brouillage;*
- 2. L'appareil doit accepter tout brouillage radioélectrique subi, même si le brouillage est susceptible d'en compromettre le fonctionnement.*

This equipment complies with ISED RSS-102 radiation exposure limits set forth for an uncontrolled environment. This equipment should be installed and operated with a minimum distance of 20cm between the radiator and any part of your body.

Ce dispositif est conforme à la limite d'exposition aux rayonnements ised - RSS - 102 prescrite pour un environnement non contrôlé. Lors de l'installation et de l'exploitation de ce dispositif, la distance minimale entre le radiateur et toute partie du corps doit être de 20 cm.

FCC Supplier's Declaration of Conformity

Model number: SQR62101WHW

This device complies with part 15 of the FCC Rules. Operation is subject to the following two conditions: (1) This device may not cause harmful interference, and (2) this device must accept any interference received, including interference that may cause undesired operation.

Suppliers Name: Schneider Electric

Suppliers Address (USA) : 6700 Tower Circle, Suite 700 Franklin, TN 37067, United States

Suppliers Website: <https://www.schneider-electric.com/en/home/>