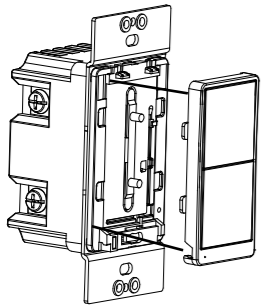


# INSTALLATION INSTRUCTIONS

## SQR14101WHW WIFI SWITCH SINGLE POLE



### SPECIFICATIONS

Voltage.....	120VAC, 60Hz
Incandescent.....	1000W
Electronic Ballast.....	5A
Standard Ballast.....	1200VA
Resistive.....	1800W(15A)
Motor.....	1/2 HP
Operating Temperature.....	32°F~104°F(0°C~40°C)
Wire Strip Length.....	16mm(5/8 in.)
Supply Connection.....	14 AWG wires, suitable for at least 90°C
Screw Torque.....	20 lbf-in
Protocol.....	IEEE 802.11b/g/n
Wireless Type.....	2.4GHz (Type 1.B action, operating control)

### FEATURES

- Perfect Replacement for regular wall switch, 120VAC, 15Amp
- Manual and Remote ON/OFF control of any connected lighting and other electrical electrical load
- Can be used for single pole or 3-Way (Multi-location) with WF3K Auxiliary Switch (sold separately)
- You can Turns your devices on or off at any time or anywhere have Internet using the free SE Wiser App on your smartphone
- Interchangeable Color Face Plate
- Indoor use only

### DESCRIPTION

The SQR14101WHW ON/OFF Switch is a perfect wireless manual and remote on/off control replacement of regular wall switch, controlling incandescent, LED, fluorescent, ballast and so on. This SQR14101WHW ON/OFF Switch works with WF3K 3-Way Auxiliary Switch that reducing energy consumption, enhancing the value of technology of your home, condominiums and apartment.

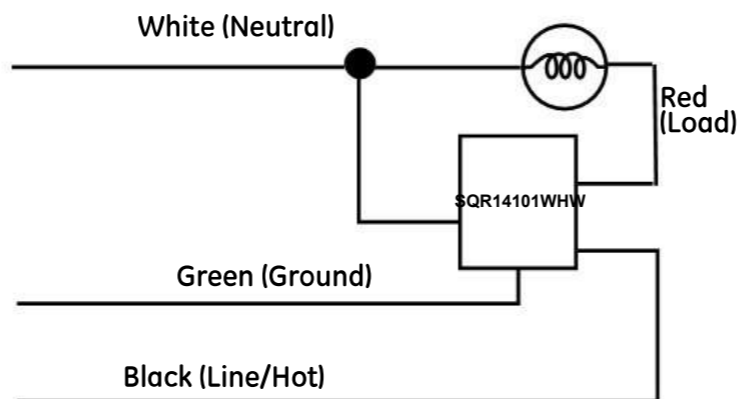
### WARNINGS AND CAUTIONS

Be sure to read the instruction carefully before installation, and the manufacturer will not be responsible for any product damage that does not follow the instruction

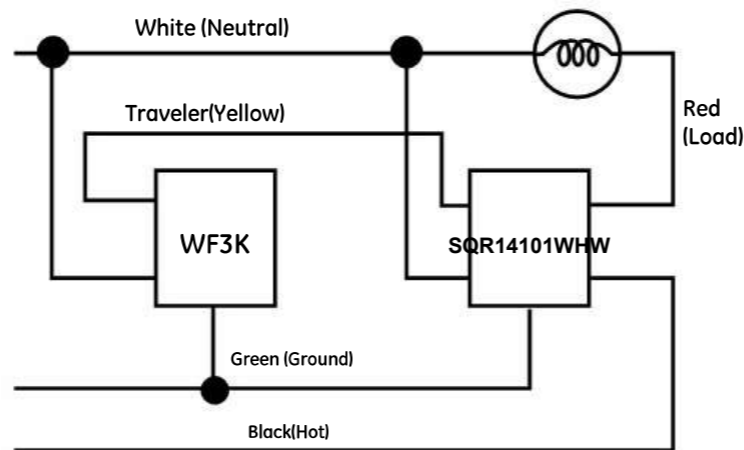
1. Wet hands are strictly prohibited.
2. Must work strictly according to the rated load.
3. Do not continue to work after self-disassembly of any nature and damage of external forces.

### INSTALLATION

#### Single Switch Wiring Schematic

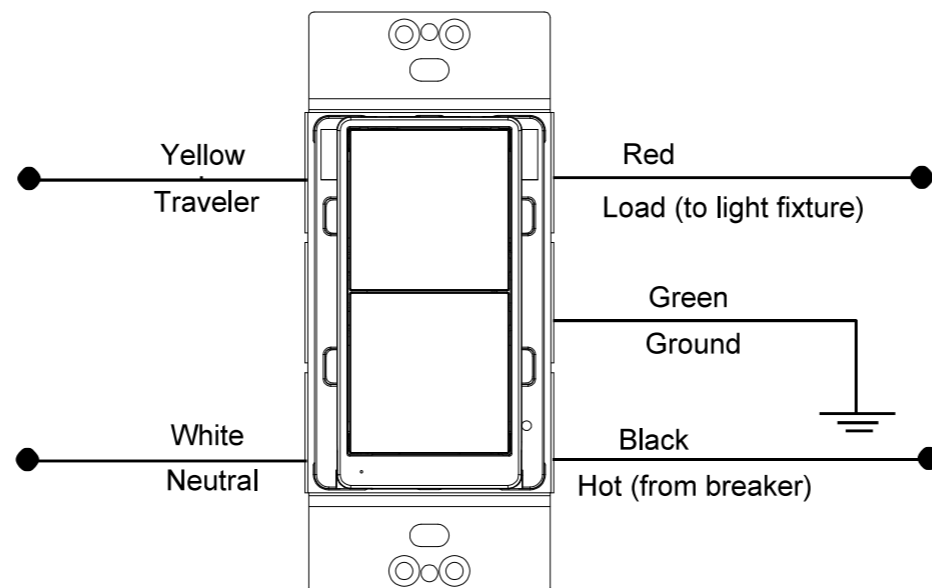


#### 3-Way Wiring Schematic using one SQR14101WHW and one WF3K



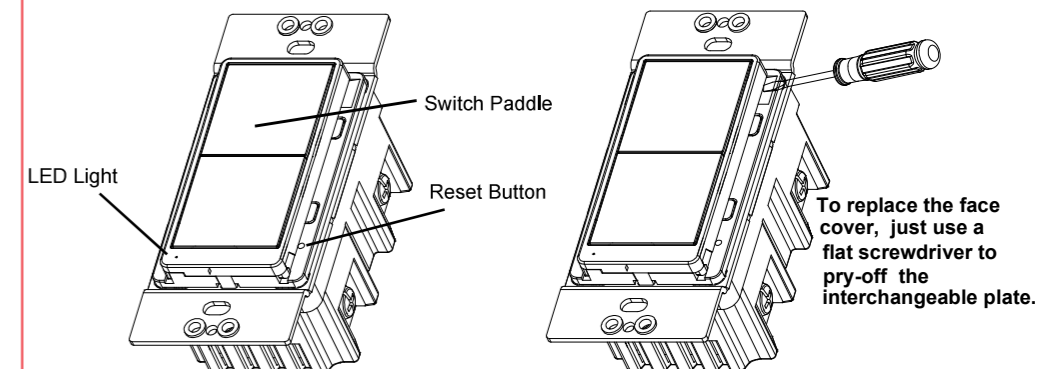
Traveler works with WF3K for 3-way control, WF3K sold separately.

#### Wiring Diagram:



1. WARNING : To avoid fire, shock, or death. High Voltage - Turn off power at circuit breaker or fuse and test that power is off before wiring.
2. Remove wall plate and existing switch mounting screws.
3. Carefully remove the existing switch from the switch box.
4. Disconnect the wiring from the existing switch.
5. Connect this SQR14101WHW switch as shown in the wiring diagram: Black lead to hot wire, white lead to neutral wire, red lead to load wire, green lead to ground wire.
6. Check connections to be sure they are tight and no bare conductors are exposed.
7. Insert the SQR14101WHW switch into the standard outlet box carefully.
8. Make sure the SQR14101WHW switch to the box using the supplied screws.
9. Attach the wall plate.
10. Restore power at the circuit breaker and test the system.

### OPERATIONS



#### Manual Control

The switch paddle on the SQR14101WHW allows the user to:

- 1, Turn ON/OFF the connected lighting.
  - 1, To turn the connected lighting ON: Tap the top of the switch paddle.
  - 2, To turn the connected lighting OFF: Tap the bottom of the switch paddle.

**Please Note:** After a power failure, the SQR14101WHW on/off switch returns to OFF state.

#### SE Wiser Smart App Control

1. Download SE Wiser app from the App Store or Google Play.



OR scan  
QR code

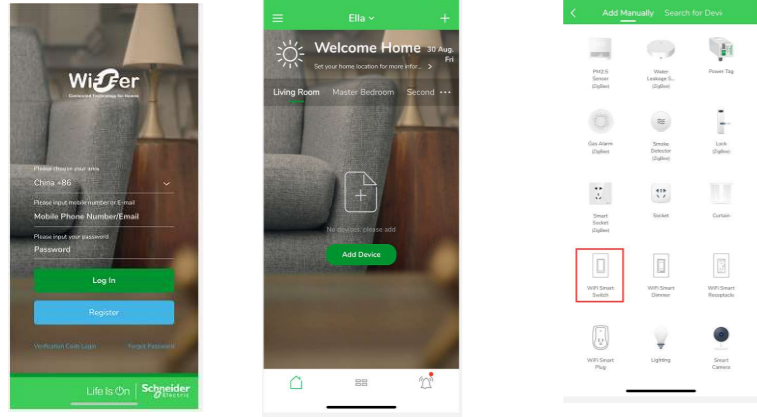


2. Connect mobile device to your 2.4GHz WIFI network. Please note this Smart outlet can only be connected to 2.4GHz network.

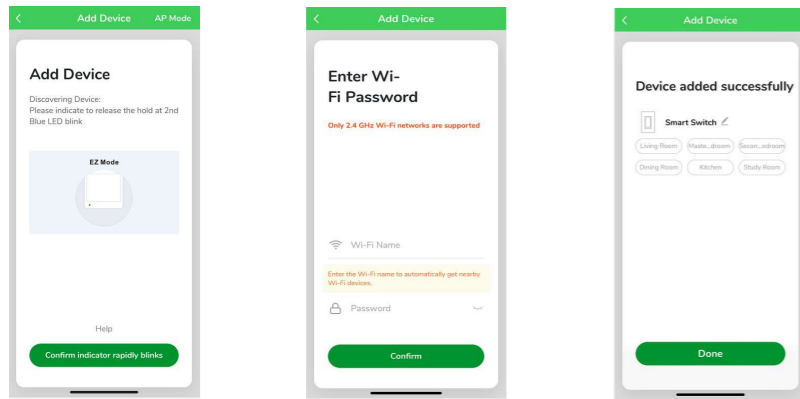


# INSTALLATION INSTRUCTIONS

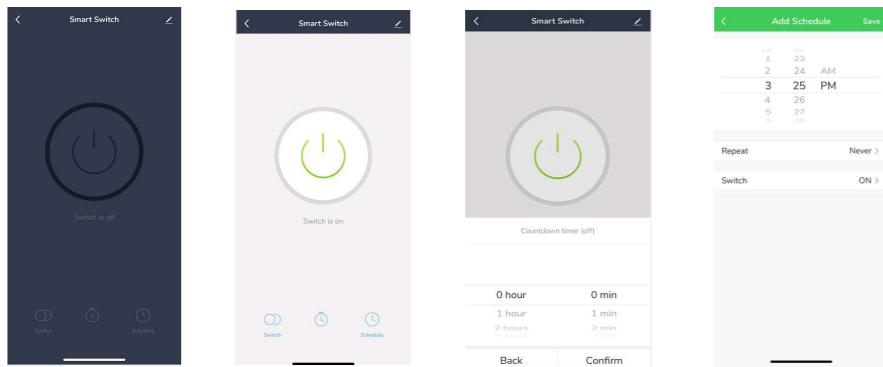
3. Launch SE Wiser and follow the in-app instructions to connect the WIFI switch to your network.
  - a. Login the SE wiser
  - b. Click the button "+"
  - c. Select the "WIFI Smart Switch"



- d. Click the bottom button
- e. Enter your Wifi password
- f. Finished

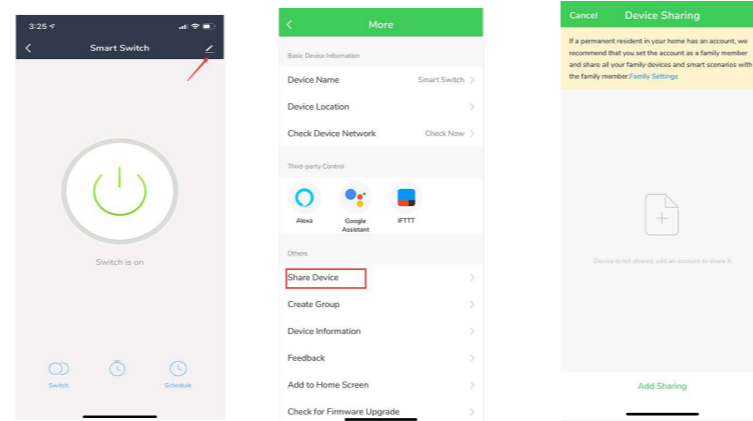


4. When the device is finished add, this WIFI Switch can be opened, closed, countdown and making weekly schedule.

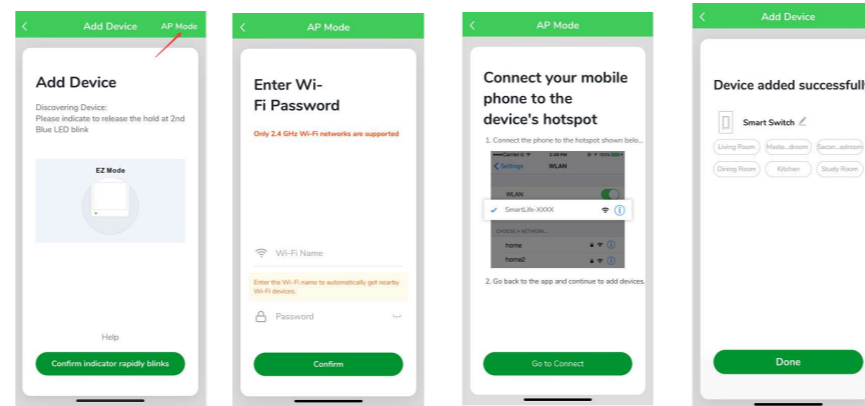


## Please Note:

1. In the process of adding device, you must correctly select the router's WIFI device name and fill in the correct WIFI password, otherwise the device will not be able to add successfully.
2. This WIFI Switch can only be paired with one phone device. If you want multiple phones to control the WIFI Switch, click below place then chose the " Device Sharing".



3. When the device fail to add in the App, please try to enter the AP mode. Before enter the AP mode please press the top or bottom button 5 times continuously, then press and hold at the sixth for 5 seconds then release, or press and hold the Rest button with a ball point 3 seconds then release. the LED indicator in green and slowly blinks.



## Restoring Factory Defaults

When power on the device and confirm that indicator light if rapidly blinks, if not please press the top or bottom button 5 times continuously, then press and hold at the sixth time for 5-8 seconds then release, or press and hold the Rest button with a ball point 3 seconds then release. The LED indicator in green and flashes quickly.

**Please Note:** When power is reconnected after the interruption, the LED indicator in green will flash quickly which means that the Dimmer is searching for WIFI. It will stop flashing and turn off when WIFI is connected successfully for 5 seconds. when the LED indicator in solid green that means your network anomaly, pls check the network.

## OPERATION AND LED INDICATION

**Quick Blinking Green:** Connecting to the network.

**Slow Blinking Green:** AP mode.

**Green bright after 2 seconds off:** Connected to the network.

**Soild Green:** Network normally or in standby mode.

**Solid Blue:** The WIFI Switch is switched on.

**Off:** The WIFI Switch is switched off.

## FCC COMPLIANCE STATEMENT

### Federal Communication Commission Interference Statement

The equipment has been tested and found to comply with the limits for a class B B Digital Device, pursuant to part 15 of the FCC Rules. These limits are designed to provide reasonable protection against harmful interference in a residential installation. This equipment uses, generates and can radiate radio frequency energy and, if not installed and used in accordance with the instruction, may cause harmful interference to radio communication. However, there is no guarantee that interference will not occur in a particular installation. If this equipment does cause harmful interference to radio or television reception, which can be determined by turning the equipment off and on, the user is encouraged to try to correct the interference by one or more of the following measures:

- Reorient or relocate the receiving antenna.
- Increase the separation between the equipment and receiver.
- Connect the equipment into an outlet on a circuit different from that to which the receiver is connected.
- Consult the dealer or an experienced radio/TV technician for help.

### FCC Caution:

This device complies with part 15 of the FCC Rules. Operation is subject to the following two conditions: (1) This device may not cause harmful interference, and (2) this device must accept any interference received, including interference that may cause undesired operation.

### FCC Radiation Exposure Statement:

This equipment complies with FCC radiation exposure limits set forth for an uncontrolled environment. This equipment should be installed and operated with minimum distance 20cm between the radiator & your body.

RF Exposure: A distance of 20 cm shall be maintained between the antenna and users, and the transmitter module may not be co-located with any other transmitter or antenna.

### Non-modification Statement:

Any changes or modifications not expressly approved by the party responsible for compliance could void the user's authority to operate this equipment.

## WARRANTY INFORMATION

Our company warranties its products to be free of defects in materials and workman-ship for a period of two (2) years. There are no obligations or liabilities on the part of our company for consequential damages arising out of or in connection with the use or performance of this product or other indirect damages with respect to loss of property, revenue, or profit, or cost of removal, installation or reinstallation.

## ISED Statement

*This device contains licence-exempt transmitter(s)/receiver(s) that comply with Innovation, Science and Economic Development Canada's licence-exempt RSS(s). Operation is subject to the following two conditions:*

- 1. This device may not cause interference.*
- 2. This device must accept any interference, including interference that may cause undesired operation of the device.*

*L'émetteur/récepteur exempt de licence contenu dans le présent appareil est conforme aux CNR d'Innovation, Sciences et Développement économique Canada applicables aux appareils radio exempts de licence. L'exploitation est autorisée aux deux conditions suivantes :*

- 1. L'appareil ne doit pas produire de brouillage;*
- 2. L'appareil doit accepter tout brouillage radioélectrique subi, même si le brouillage est susceptible d'en compromettre le fonctionnement.*

This equipment complies with ISED RSS-102 radiation exposure limits set forth for an uncontrolled environment. This equipment should be installed and operated with a minimum distance of 20cm between the radiator and any part of your body.

Ce dispositif est conforme à la limite d'exposition aux rayonnements ised - RSS - 102 prescrite pour un environnement non contrôlé. Lors de l'installation et de l'exploitation de ce dispositif, la distance minimale entre le radiateur et toute partie du corps doit être de 20 cm.

FCC Supplier's Declaration of Conformity

Model number: SQR14101WHW

This device complies with part 15 of the FCC Rules. Operation is subject to the following two conditions:

(1) This device may not cause harmful interference, and (2) this device must accept any interference received, including interference that may cause undesired operation.

Suppliers Name: Schneider Electric

Suppliers Address (USA) : 6700 Tower Circle, Suite 700 Franklin, TN 37067, United States

Suppliers Website: <https://www.schneider-electric.com/en/home/>