

Location tracking remote control set. [PHEW]



KKW Design solutions Korea

PHL-1000K TRACKER(RC)

PACH-100N TRACKER(AR)

製品の簡単 使用説明書 (プロトタイプガイド)

Prototype User's Guide (How to use)

© 2018 Kyungwon. Kim. All rights reserved. Unauthorized use of this design or image without permission is prohibited.

The above message is intended solely for the named address and may contain information that is privileged, confidential or otherwise protected under applicable law. Any unauthorized dissemination, distribution, copying or use of the information contained in this communication is strictly prohibited. If you have received this communication in error, please notify the sender by email and erase this communication immediately.

본 내용은 지정된 수신인만을 위한 것이며, 부정경쟁방지 및 영업비밀의 보호에 관한 법률을 포함하여 관계법령에 따라 보호의 대상이 되는 영업비밀, 기밀정보 등을 포함하고 있을 수 있습니다. 본 문서에 포함된 정보의 전부 또는 일부를 무단으로 제3자에게 공개, 배포, 복사 또는 사용하는 것은 엄격히 금지됩니다. 본 내용,파일이 잘못 전송된 경우, 발신인 또는 당사에 알려주시고, 본 파일을 즉시 삭제하여 주시기 바랍니다.

A

リモコンとレシーバのペアリング、制御方法

Remote control and receiver pairing and control method.

B

スマートフォンアプリケーションとレシーバのペアリング、方法

How to pair and control smartphone applications and receivers.



Remote control Unit (RCU)

A

リモコンとレシーバのペアリング方法。

How to pair the remote control with the receiver.



電源を1秒以上押し待機する

- 緑ライティングが後にすぐに1回の領域に白色光がきらめき。

Press and hold the power for more than 1 second

- As soon as the green light is on, the white light flashes in area 1

電源キー、確定キー、レシーバ呼び出しキー

Receiver (AR) **PACH-100N**

A

リモコンとレシーバのペアリング方法。

How to pair the remote control with the receiver.

サイド電源キーを1秒以上押し待機する

- 緑のライティングが見えるとすぐにブルーLEDの光がきらめき。

Press and hold the side power key for more than 1 second

- The blue LED flashes in the window as soon as the green light is on.



サイド電源キー

Remote control Unit (RCU)

リモコンとレシーバのペアリング方法。

리모콘과 리시버의 페어링 방법.

A



自分がペアリングしたい番号に上、下キーを移動して
下の「O」ボタンを押すと、ペアリングが完了します。

(ペアリング完了時の音と一緒に受信機でグリーンライティングが表示されます。)

**Move the up and down keys to the number you want to pair with Press
the "O" button below to complete the pairing.**

(When the pairing is successful, the sound is displayed on the receiver with the sound.)

移動キー

01

電源キー、確定キー、レシーバ呼び出しキー

02

※ 1から6までの多数のレシーバをペアリングして使用することができます。

※ You can pair multiple receivers from 1 to 6.

Remote control Unit (RCU) → Receiver (AR) PACH-100N

A

リモコンのレシーバーを呼び出す方法

How to call the receiver from the remote control



自分がペアリング完了した番号に移動し、「O」ボタンを押すたびに、レシーバからグリーンライティングと音が発生して、位置追跡をすることができます。

(受信距離は屋外で最大50～60Mまで可能です。)

Each time you press the "O" button to go to the number you have completed pairing, you will be able to track the location by lighting and sound generated by the receiver.

(Communication distance can be up to 50 ~ 60M outdoors.)

移動キー

01

電源キー、確定キー、レシーバ呼び出しキー

02

OK !!

※ リモコン (RCU) 制御は、主に室内、個人の住居空間で使します。

※ Remote control (RCU) control is mainly used in indoor and residential areas.

Application (App.)

B

専用アプリケーションとレシーバのペアリング方法

How to pair the dedicated application with the receiver

01

ロゴ画面 LOGO



02

メイン画面 MAIN



設定画面 Setting



Application (App.) → Receiver (AR) PACH-100N

専用アプリケーションとレシーバのペアリング方法

How to pair the dedicated application with the receiver

メイン画面 基本画面

- 02** ペアリングしようとする領域を手でタッチします。
Touch the area you want to pair with your hand.

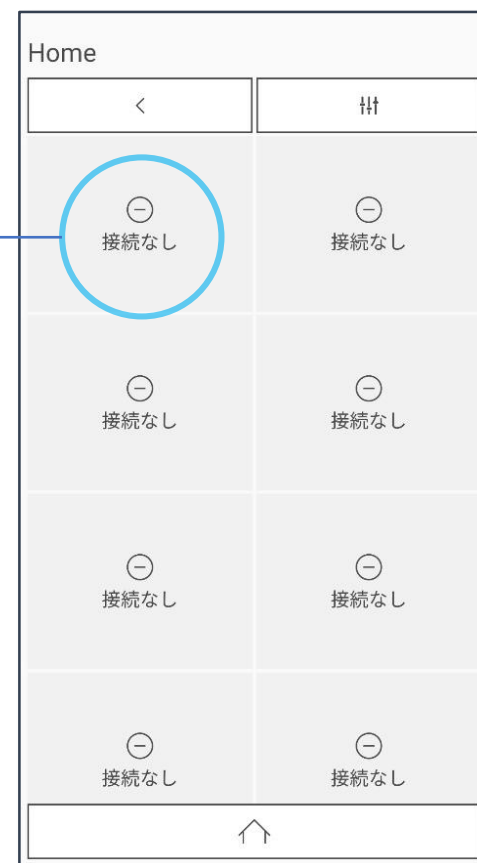


割り当て番号領域

- 01** サイド電源キー押し待機します。(同前)
Press and hold the side power key (same as before)



サイド電源キー



Application (App.) → Receiver (AR) **PACH-100N**

専用アプリケーションとレシーバのペアリング方法

How to pair the dedicated application with the receiver

B

OK !!

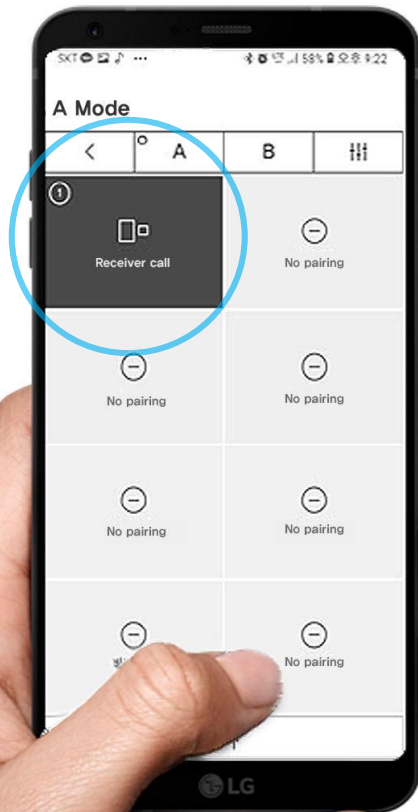
- 01 接続要求
- 02 レシーバの電源を入れたら、自動検出がされます。
- 03 ペアリング完了
Pairing complete



Application (App.) → Receiver (AR) **PACH-100N**

スマートフォンアプリでは、レシーバを呼び出す方法。

How to call your receiver from your smartphone app



01

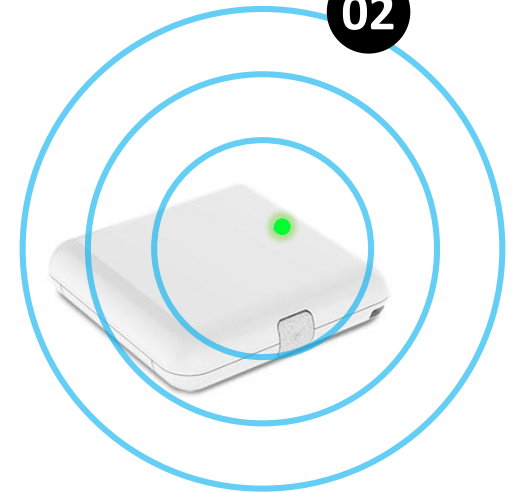
ペアリング完了ボタンを押すたびにレシーバからの信号が発生します。

Each time you press a button that is paired, a signal is generated at the receiver.

60m (196ft)

Bluetooth 5.0 class1の 使用。

02

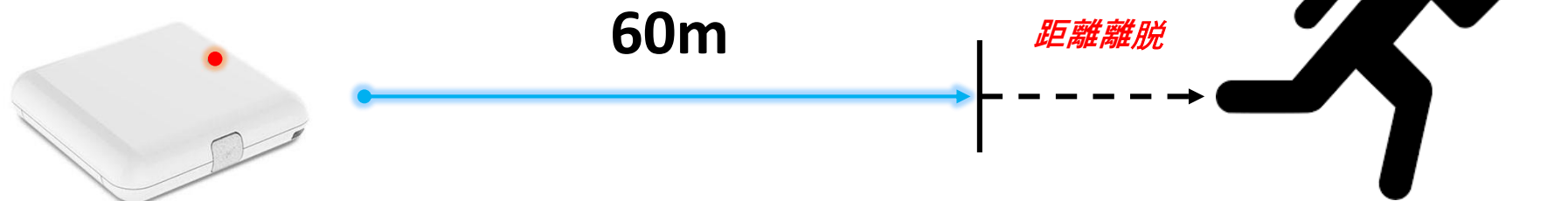


※ アプリケーション制御は、主に屋外、旅行や出張の際、個人の物品にレシーバーを装着した後に使用します。

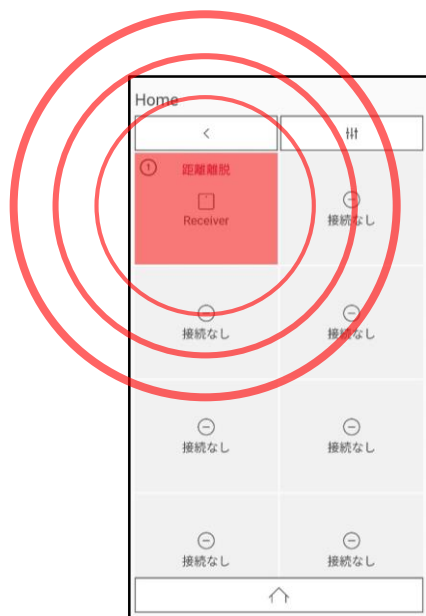
※ Application control is mainly used outdoors, when the receiver is attached to personal items when traveling or traveling.

受信距離の離脱時 !!

When the receiving distance is out of range



距離離脱、またはレシーバの電源がオフになると、すぐにスマートフォンの着信音が継続的に鳴ります。



FCC Warning Statement

FCC Part 15.19

This device complies with part 15 of the FCC Rules. Operation is subject to the following two conditions: (1) this device may not cause harmful interference, and (2) this device must accept any interference received, including interference that may cause undesired operation.

FCC Part 15.21

Any changes or modifications (including the antennas) to this device that are not expressly approved by the manufacturer may void the user's authority to operate the equipment.

FCC RF Radiation Exposure Statement

This equipment complies with FCC RF Radiation exposure limits set forth for an uncontrolled environment.

This device and its antenna must not be co-located or operating in conjunction with any other antenna or transmitter.