

## HD IP Camera Mobile Phone Operating Instructions



(Android / ISO scan code adaptive)

Computer client download address: <http://www.p6scloud.com>

### I Download and install P6slite mobile APP

According to the type of mobile phone, download and install “P6slite” from IOS app store or Android app store, follow the prompts to complete registration and login “P6slite”, support third party login such as WeChat, QQ.



### II Add camera

#### 2.1 Account registration, login

User registration and login can be registered by mobile phone number (currently only in Chinese mainland), email registration (please use



real email address to retrieve password later), or you can log in by WeChat or QQ.

## **2.2 Add a new device process**

To add a new camera, you need to restore the camera to the initial state. Press and hold the reset button for about 5 seconds to return to the initialization state. Wait for the camera to power on (30 seconds after power-on) to start the set-up network.

**2.2.1** Android phone connection method: connect WIFI through device AP hotspot

First connect the mobile phone to the router's WIFI network (please connect the phone to 2.4G WIFI, the camera does not support 5G WIFI).

**2.2.1.1** Click on the login APP "P6slite", click the add button "+" in the middle or upper right corner of the device list.

**2.2.1.2** Select AP set-up network

**2.2.1.3** Select the AP hotspot device beginning of

ZWAP\_NG\*\*\*\*-73\*\*\*\*-CE\*\*\* (Enter the device AP hotspot password:

01234567), After clicking, it will show the hotspot is connecting

(countdown 60 seconds, semi-transparent content display at the bottom of the screen: connected to the WLAN network"

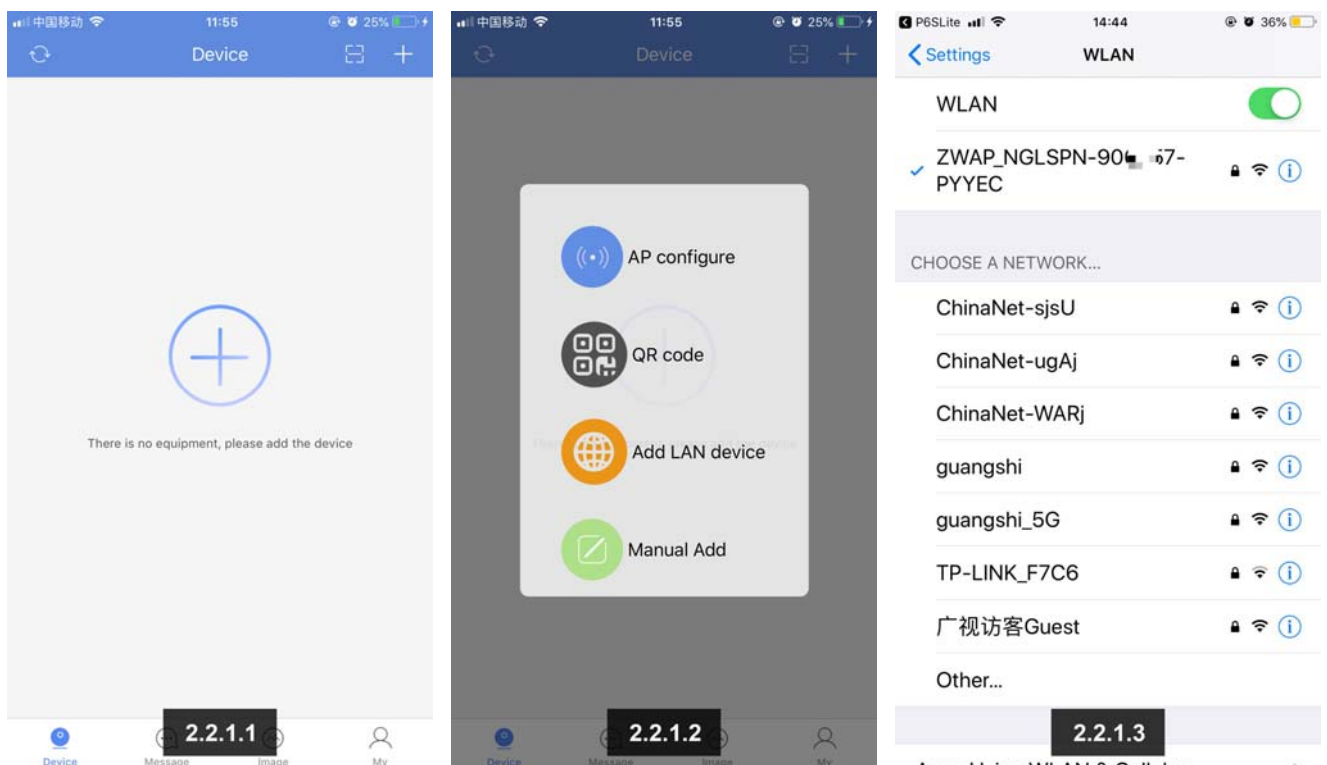
ZWAP\_NG\*\*\*\*-73\*\*\*\*-CE\*\*\*").

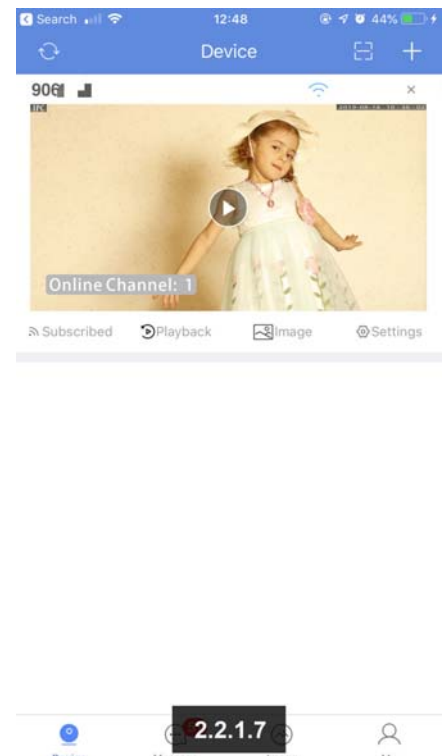
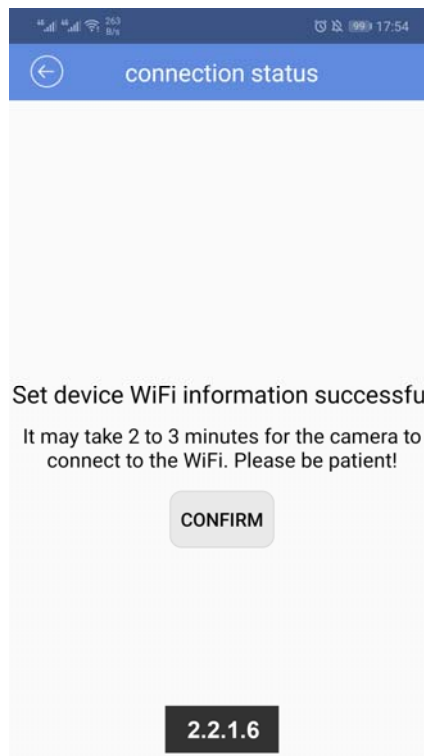
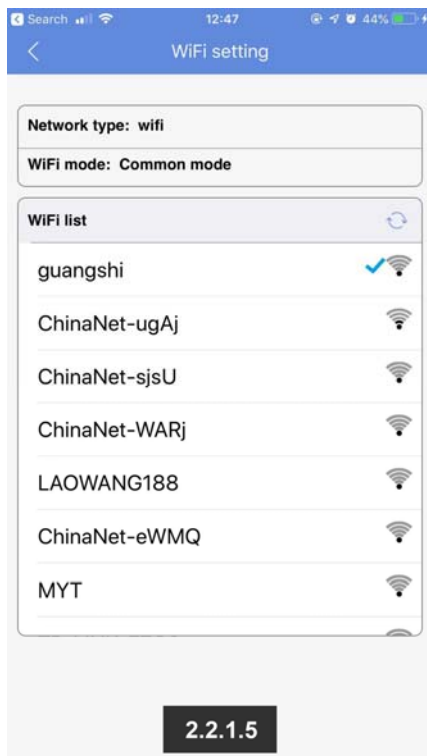
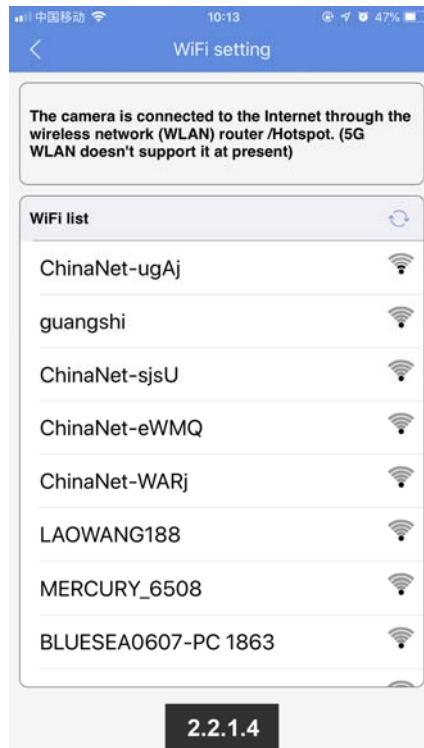
**2.2.1.4** Jump to the WIFI setting page (the device is connecting to WIFI), according to the list of wireless networks displayed on the current page select the WIFI network to connect .

**2.2.1.5** Enter the WIFI password, click Confirm,you will hear "WIFI is connecting, please wait ....network connection successful"

**2.2.1.6** "Set device WIFI information successful" appears on the APP screen, click confirm,you will see the device in the device list.

**2.2.1.7** You can watch the video of the device.





**2.2.2** Connection method of Apple mobile phone: Connect WIFI through device AP hotspot:

**2.2.2.1** Open the mobile phone WIFI list, find the AP hotspot device beginning of ZWAP\_NG\*\*\*\*-73\*\*\*\*-CE\*\*\*, connect the mobile phone to the hotspot.

**2.2.2.2** Enter the device AP hotspot password: 01234567

**2.2.2.3** Open the APP "P6slite", Click the local mode in the lower left corner of the APP login page. You will see the connected device in the device list.

**2.2.2.4** Click the device's setting button to jump to the setting page (the device is about to connect to WIFI)

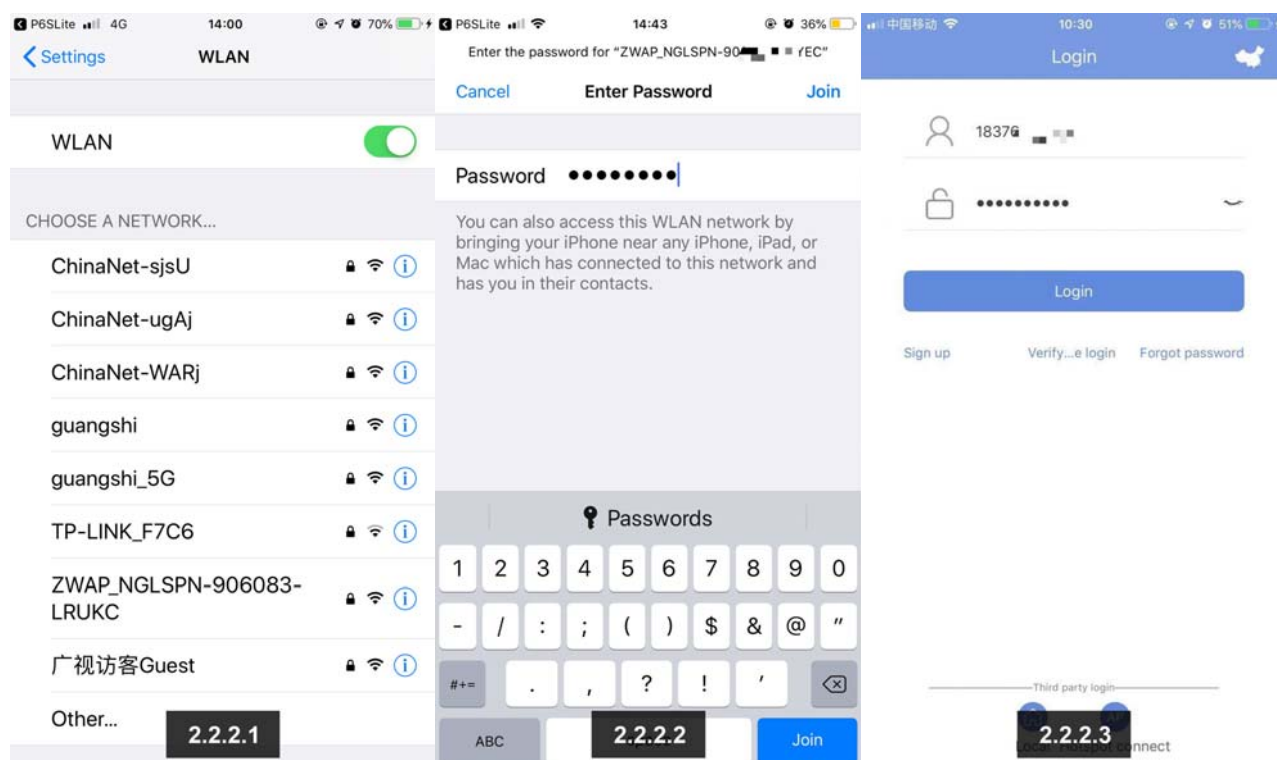
**2.2.2.5** Click "More" - select WIFI setting.

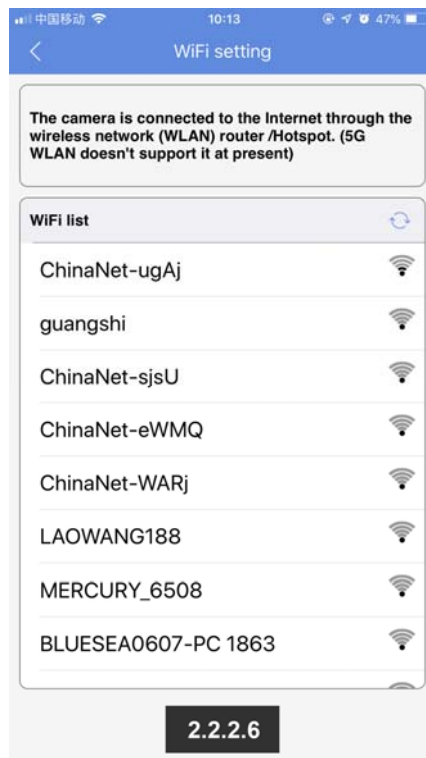
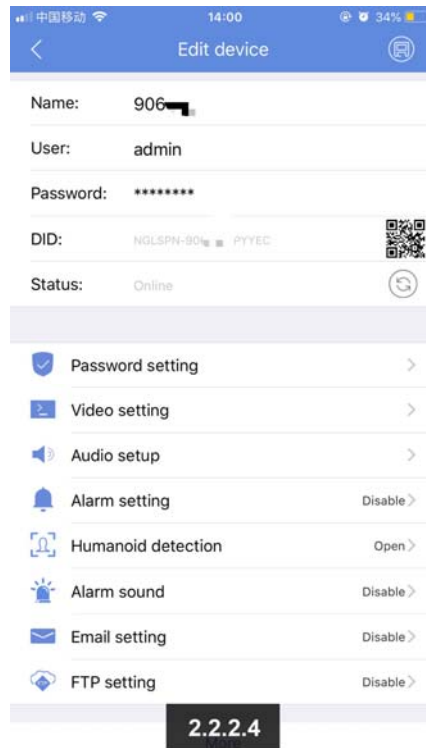
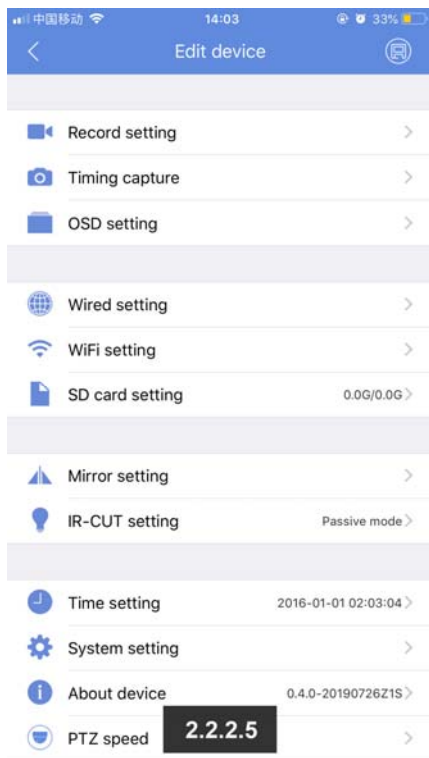
**2.2.2.6** According to the list of wireless networks on the current page, select the WIFI network to be connected.

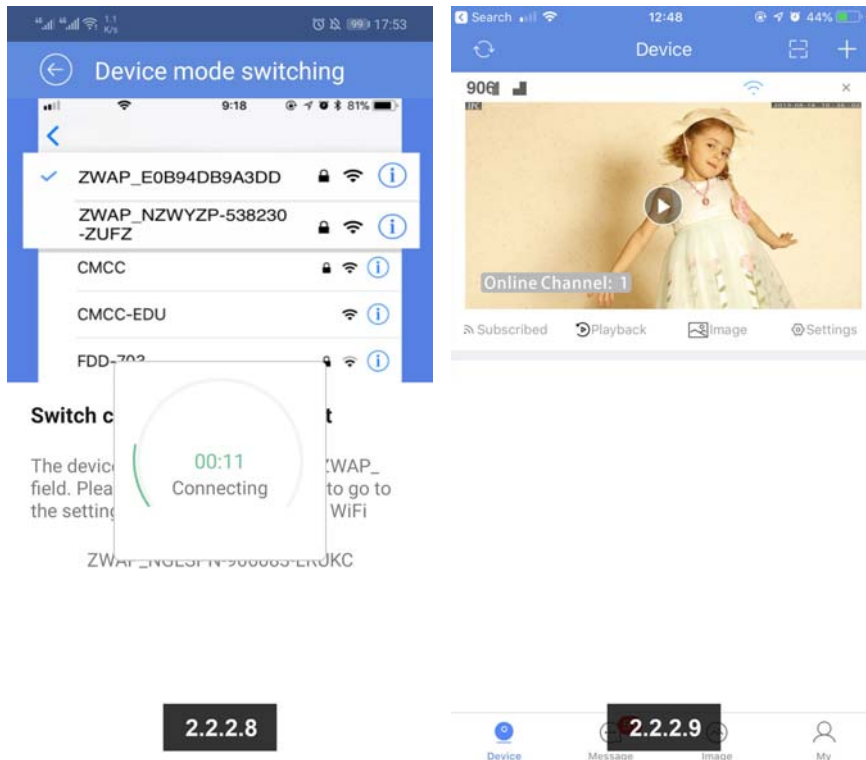
**2.2.2.7** Enter the WIFI password, click confirm, you will hear "WIFI is connecting, please wait .... network connected successful".

**2.2.2.8** "Set device WIFI information successful" appears on the APP screen. Click confirm

**2.2.2.9** You can see the device on the APP device list page, then you can watch the video.





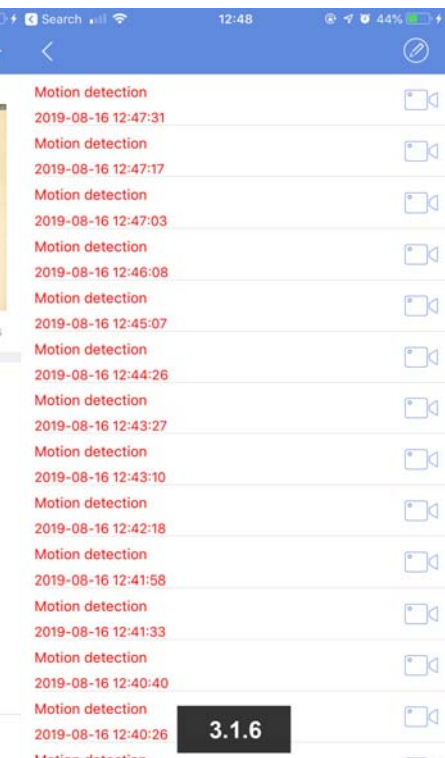
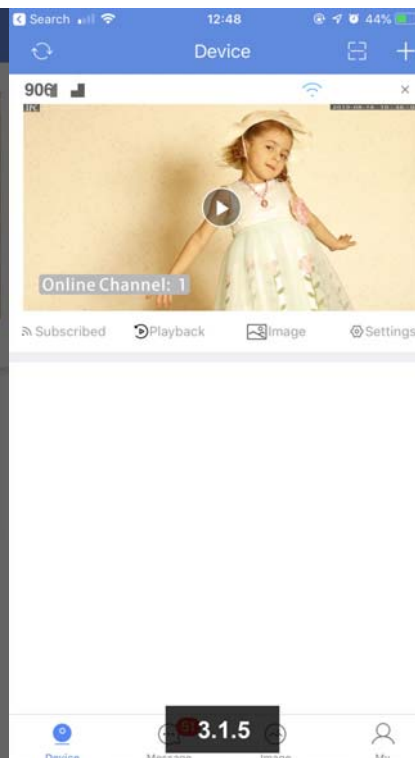
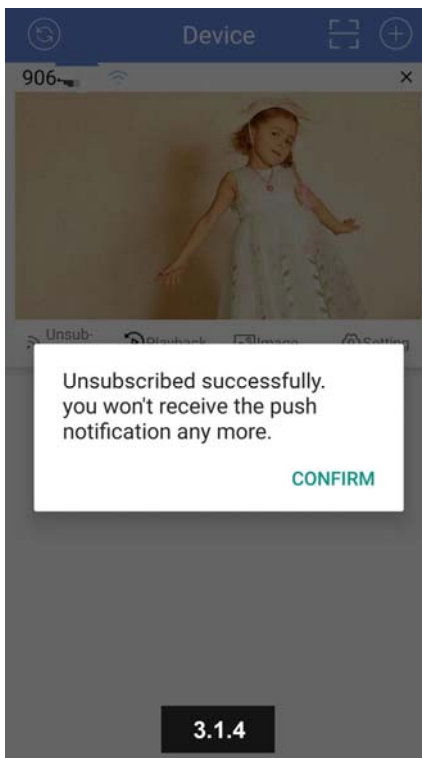
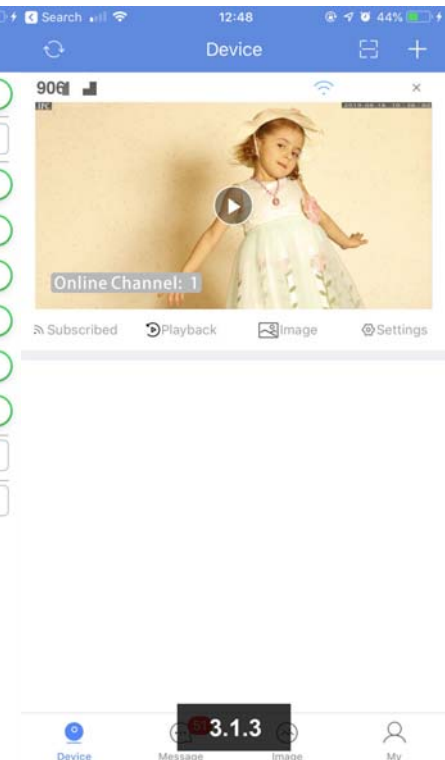
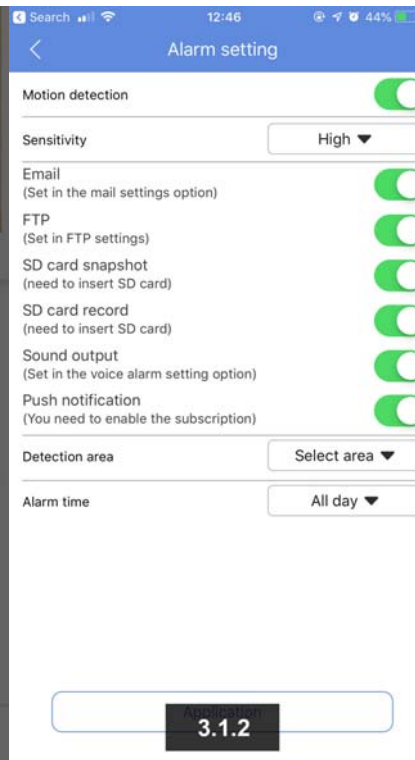
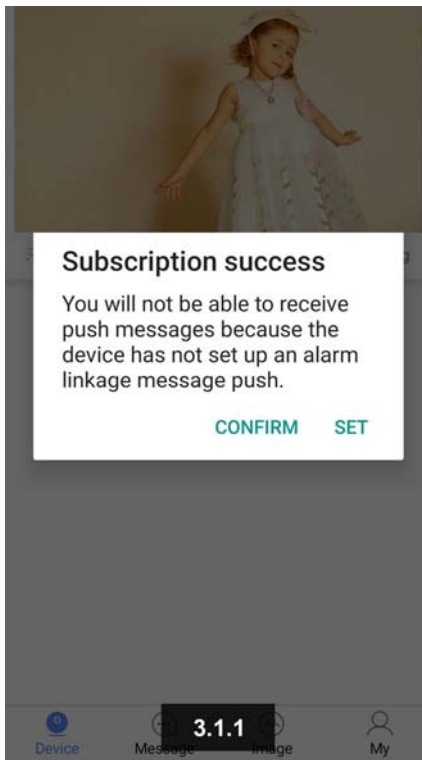


### III、The button function introduction

**3.1 Not subscribed:** One-click to open the push (image send to mailbox + mobile phone), it shows not subscribed when the push function is off , you need to set the corresponding option in the alarm setting when you need to open this function (as the images show below);

**Subscribed:** One-click to close the push (do not send image to mailbox + mobile phone), it shows subscribed when the push function is on.

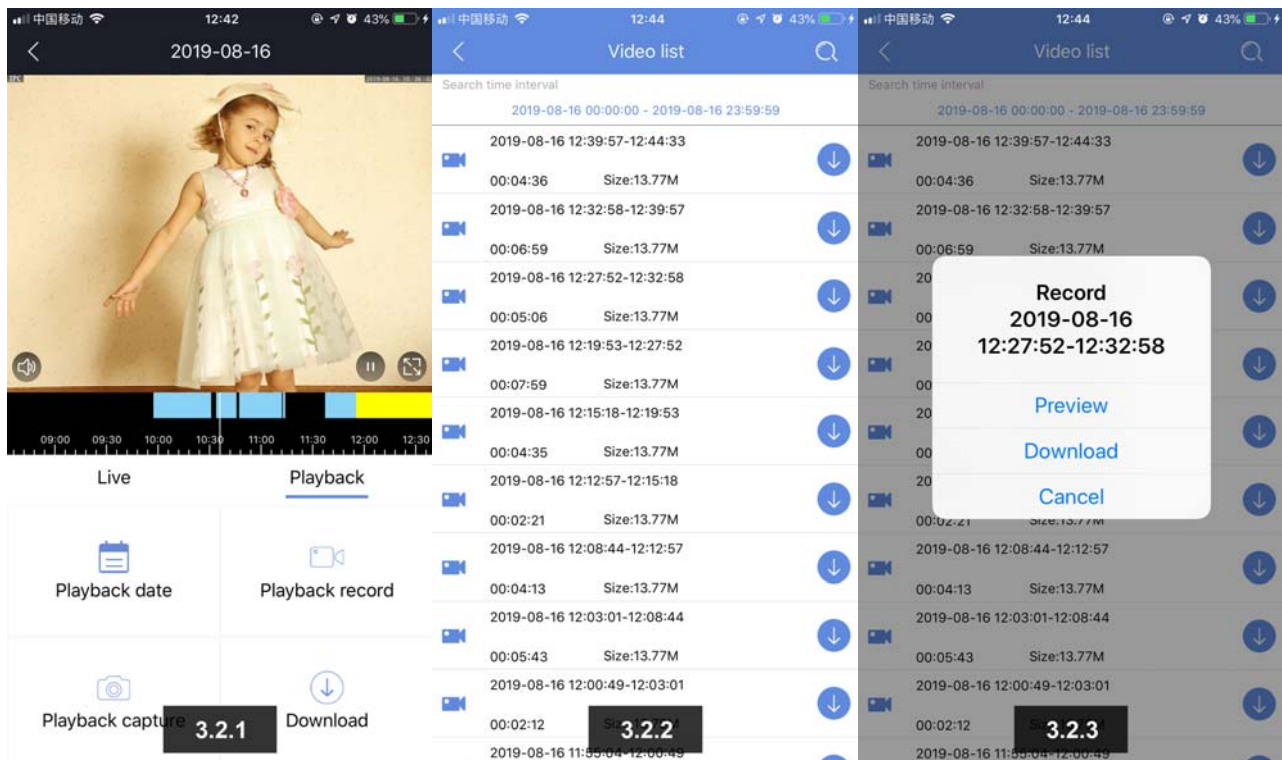




**3.2 Playback:** Click to enter the video playback page (with TF card and video recording), drag the timeline to view the video in different time periods (blue for regular recording / purple for AI human detection video / yellow for motion detection recording), And you can select the playback time to retrieve, play back screen-shots and download to the mobile phone (MP4 format) and

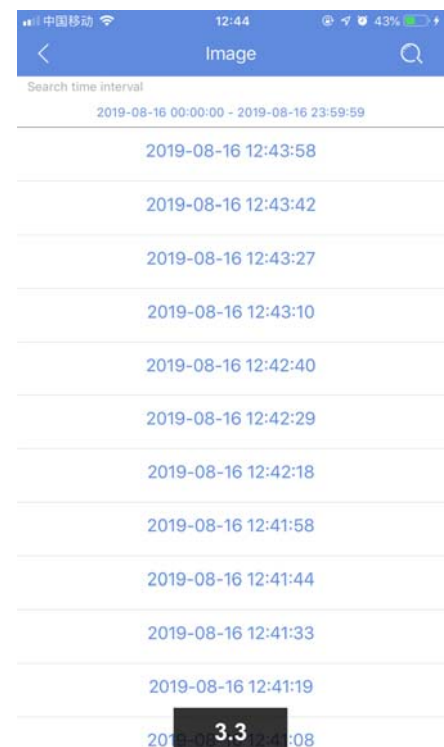


other functions, after playback, you can directly click “ live ” to the preview page.



**3.3 Remote image:** You can enter the push image page with one click, and select the time to preview the corresponding push image.

**3.4 Setting:** One-click to enter the device parameter setting menu.



## IV、Setting menu

**4.1 Set the camera device name:** customize the naming according to the user's habits and the location of the camera, for example “living room” , “gate” , “parking lot” , “checkout counter” , “ store door” , etc.( Name should be no more than 54 characters ).

**4.2** Username: default is admin

**4.3** Password: Support letters+ numbers combination (default is empty / maximum support 16 characters)

**4.4** DID: DID number and QR code of the current device (for face-to-face sharing, etc.)

**4.5** Status: Device online or offline status display

**4.6** Password setting: set or change the device password (the default password is empty)

**4.7** Video setting: main stream/sub-stream ,stream type, video encoding, resolution, frame rate, rate control and picture quality setting

**4.8** Audio setting: Monitor Input / Speaker Output Volume setting

**4.9** Alarm setting: motion detection and sensitivity, trigger email, trigger SD card snapshot, trigger SD card recording, trigger FTP, linkage push, voice alarm, detection area, detection time setting

**4.10** Alarm snapshot: snapshot number of images (default 3)

**4.11** Human detection: motion detection, human tracking, sensitivity, trigger mail, trigger SD card snapshot, trigger SD card recording, trigger FTP, linkage push, voice alarm, detection area, arming time setting

**4.12** Voice alarm: siren linkage setting

**4.13** Email setting: support QQ, Yahoo, Google, Hotmail, Netease, Sina and other mailbox setting

**4.14** FTP setting: FTP Account setting (For upload audio and video data)

- 4.15** Record setting: HD/SD, timer/alarm/motion/human detection/disable/ record time setting
- 4.16** Timing capture: save picture to SD card, SD card capture interval, save picture to FTP, FTP capture interval setting, etc.
- 4.17** OSD setting: Image OSD, Channel Name/Display Time - On and Off setting
- 4.18** WIFI setting: display WIFI list and network status (support switch to any WIFI network at the current environment)
- 4.19** SD card setting: display the total capacity, available capacity and status of the SD card, formatting setting
- 4.20** Mirror setting: mirror mode (open only when mounted on the ceiling)
- 4.21** IR-CUT setting: IR-CUT mode, sensitivity, switching time, IR-CUT reverse, IR-CUT infrared light setting
- 4.22** Time setting: mode selection (sync to phone time), device time zone, device time - sync setting
- 4.23** System setting: Restore to default setting, restore to factory setting, reboot system
- 4.24** About device: device ID, device model, firmware version, network type, IP address, MAC address, subnet mask, gateway, DNS setting
- 4.25** PTZ speed: 1-10 (default is 5)

## **V、Q&A**

## **5.1**

Q: When adding a device, the password is incorrect or the password set after the last connection is forgotten.

A: The device may have a password or has been changed, or reset the password. Please press the "Reset" button of the device (using the U-shaped pin) for 5 seconds. The device voice prompts "Reset successful" , indicating that the device password is reset successfully, follow the steps above to re-add the device.

## **5.2**

Q: The device list is prompted the device is offline

A: Please check if the device is connected to the network. Please check if the phone is connected to the device and router in same network.

## **5.3**

Q: What should I do if the mobile APP does not receive the push?

A: Please check if the push function is turned on (displayed as subscribed to open), whether there is open alarm push linkage (setting - alarm setting)

## **5.4**

Q: When playback video can not find video files

A: Please check if the SD card is damaged, whether there is an SD card installed, check the device time, check whether the playback time is correct.

## **5.5**

Q: The device cannot connect to WIFI

A: Please check whether the distance between the device and the router is too far, whether the mobile phone correspond to the hotspot of the current device, whether the router have the DHCP function enabled, whether the connected WIFI is 5G (the device does not support 5G, only supports 2.4G), and whether the router opens the anti-mite network function,so that filtered device.

## **VI Get more information**

This quick operation guide will help you to use your wifi camera quickly. If you need more information, you can download a detailed user guide or seek technical support from the manufacturer.

**FCC Statement**

This equipment has been tested and found to comply with the limits for a Class B digital device, pursuant to part 15 of the FCC rules. These limits are designed to provide reasonable protection against harmful interference in a residential installation. This equipment generates, uses and can radiate radio frequency energy and, if not installed and used in accordance with the instructions, may cause harmful interference to radio communications. However, there is no guarantee that interference will not occur in a particular installation. If this equipment does cause harmful interference to radio or television reception, which can be determined by turning the equipment off and on, the user is encouraged to try to correct the interference by one or more of the following measures:

- Reorient or relocate the receiving antenna.
- Increase the separation between the equipment and receiver.
- Connect the equipment into an outlet on a circuit different from that to which the receiver is connected.
- Consult the dealer or an experienced radio/TV technician for help.

Responsible for compliance could void the user's authority to operate this equipment. (Example- use only shielded interface cables when connecting to computer or peripheral devices).

Any Changes or modifications not expressly approved by the party responsible for compliance could void the user's authority to operate the equipment.

This equipment complies with Part 15 of the FCC Rules. Operation is subject to the following two conditions:

- (1) This device may not cause harmful interference, and
- (2) This device must accept any interference received, including interference that may cause undesired operation.

**FCC Radiation Exposure Statement:**

The equipment complies with FCC Radiation exposure limits set forth for uncontrolled environment. This equipment should be installed and operated with minimum distance 20cm between the radiator and your body.