



HSA-FUF Hybrid Steering Fixed ESA Terminal

User Manual

Name: Hybrid Electronic Steering Terminal

Model Number: HSA-FUF



Contents

LEGAL RIGHTS	4
STATEMENT OF CONDITIONS	4
OPERATING INSTRUCTIONS	4
WARRANTIES AND DISCLAIMERS	4
EXCLUSIVE WARRANTY	5
DISCLAIMER	5
LIMITATION OF LIABILITY	6
ELECTRONIC EMISSION NOTICES	6
SAFETY CONSIDERATIONS	7
RADIO	7
CAUTION	7
DISPOSAL OF ELECTRONIC AND ELECTRICAL WASTE	7
IMPORTANT NOTICE	7
1 INTRODUCING HSA-FUF TERMINAL	9
2 TERMINAL FEATURES	10
3 TECHNICAL SPECIFICATION	10
4 PACKING LIST	12
4.1 UNPACKING AND INSPECTION	13
4.2 FREIGHT DAMAGE	14
4.3 MATERIAL-MISSING OR DAMAGE	14
4.4 TERMINAL ACCESS DETAILS	14
5 TERMINAL MECHANICAL LAYOUT	15
5.1 STRUCTURE DIAGRAM	15
5.2 TERMINAL DIMENSIONS	15
5.3 TERMINAL INSTALLATION	16
i. Install the adapter board on the Terminal	16
ii. Installation diagram of the bracket	16
iii. Install the bracket on the pole with U type bolt(steel hoops)	17
iv. Install the Terminal whose adapter has been installed to the bracket	17
6 INTERFACE DEFINITION AND ACCESS	18
6.1 INTERFACE DEFINITION	18
6.2 INTERFACE ACCESS	19
6.2.1 Power Supply Access	19
6.2.2 Data Access	19

6.2.3	RF Cable Access	22
7	TERMINAL ALIGNMENT	23
7.1	BASIC ALIGNMENT OPERATION.....	23
7.2	STATUS CHECKING	24
8	TERMINAL WEB UI USING GUIDANCE	25
8.1	WEB LOGIN	25
8.2	WEB PAGE INTRODUCTION	26
8.3	ANTENNA MAIN CONTROL INTERFACE (ANT)	27
8.4	DYNAMIC DATA INTERFACE (DATA CHART)	30
8.5	FIRMWARE INTERFACE (SYSTEM).....	31
8.6	SPACE-EARTH INTEGRATED (SENIOR)	31
8.7	FAQ.....	31
9	TROUBLESHOOTING AND MAINTENANCE	32
9.1	TROUBLESHOOTING.....	32
9.2	MAINTENANCE	32
10	TECHNICAL SERVICE CONTACT	33
11	PRODUCTION SPEC	34
APPENDIX 1 OTHER STATEMENTS.....		36
APPENDIX 2 TECHNICAL SERVICE CONTACT INFORMATION		38

Legal Rights

© Copyright 2013 China Starwin Science & Technology Co., Ltd. All rights reserved.

The patents, privileges and confidentiality contained in this document are owned by China Starwin Science & Technology Co., Ltd. Its contents may not be disclosed without the written permission of China Starwin Science & Technology Co., Ltd. No part of this document may be deemed to be part of a contract or warranty unless the specific content is contained therein.

Statement of Conditions

The information contained in this brochure is subject to change without notice.

China Starwin Science & Technology Co., Ltd is not responsible for errors, configurations, performance, applications and incidental or consequential damages that occur in the use of the equipment contained in this document.

Operating Instructions

The HSA-FUF two-dimensional hybrid steering phased array terminal is satellite earth station antenna system for the implementation of Ku-band. The use requires the setting of satellite parameters according to the different use cases and automatic alignment to the satellite.




The user manual provides operational instructions for the terminal for applications in Ku-band. But should take into account the specific modem and antenna electrical performance parameters. This manual is intended to provide technical support for personnel who responsible for the installation, commissioning and operation of hybrid steering phased array terminals.

Warranties and Disclaimers

The information contained in this manual is subject to change without notice.

China Starwin Science & Technology Co., Ltd. shall not be liable for errors contained herein or for incidental or consequential damages in connection with the furnishing, performance, or use of this manual or equipment supplied with it.

Safety warnings are messages that alert you to potential safety hazards and tell you how to avoid them. These messages are marked by the signal words, DANGER, WARNING and NOTICE, as shown below. To avoid possible property damage, personal injury or, in some cases possible death, please read and follow all safety warnings carefully.

	This icon indicates a DANGER: Indicates a potentially dangerous situation which, if not avoided, it will result in death or serious injury.
	This icon indicates a WARNING: Indicates a potentially dangerous situation which, if not avoided, could result in minor or moderate injury.
	This icon indicates NOTICE: This is a warning message about possible property damage, product damage or failure, data loss, or other unwanted results, but not personal injury.

Exclusive Warranty

China Starwin warrants that the Product hardware it supplies and the tangible media on which any software is installed, under normal use and conditions, will be free from significant defects in materials and workmanship for a period of twelve (12) months from the date of delivery of a given Product to Purchaser (the "Warranty Period"). China Starwin will, at its sole option and as Purchaser's sole remedy, repair or replace any defective Product in accordance with China Starwin standard R&R procedure.

CHINA STARWIN SHALL NOT BE LIABLE UNDER THIS WARRANTY IF ITS TESTING AND EXAMINATION DISCLOSE THAT THE ALLEGED DEFECT IN THE PRODUCT DOES NOT EXIST OR WAS CAUSED BY PURCHASER'S OR ANY THIRD PERSON'S MISUSE, NEGLIGENCE, IMPROPER INSTALLATION OR IMPROPER TESTING, UNAUTHORIZED ATTEMPTS TO REPAIR, OR ANY OTHER CAUSE BEYOND THE RANGE OF THE INTENDED USE, OR BY ACCIDENT, FIRE, LIGHTNING OR OTHER HAZARD.

Ltd. warrants the hardware products and the tangible media on which any software is installed to be free from material defects in material and workmanship under normal conditions of use for a period of twelve months from the date of delivery of the given product to the purchaser (warranty period). Ltd. will be the sole option for the buyer to return and replace defective products in accordance with the return and replacement process of China Starwin Science & Technology Co., Ltd.

Ltd. is not responsible for the terms of this warranty in the following cases.

Defects in the product that tests and inspections show do not exist or defects are caused by the buyer or any third party.

Unauthorized repair by human misuse, negligence, improper installation or improper testing. Accidents, fire, lightning or other hazards, etc.

Disclaimer

(a) THE PRODUCT IS SOLD ON AN "AS IS" BASIS. CHINA STARWIN, ITS AFFILIATES OR ITS LICENSORS MAKE NO WARRANTIES, WHATSOEVER, WHETHER EXPRESS OR IMPLIED, WITH RESPECT TO THE SOFTWARE AND THE ACCOMPANYING DOCUMENTATION. CHINA STARWIN SPECIFICALLY DISCLAIMS ALL IMPLIED WARRANTIES OF MERCHANTABILITY AND FITNESS FOR A PARTICULAR PURPOSE AND NON-INFRINGEMENT WITH RESPECT TO THE SOFTWARE. UNITS OF PRODUCT (INCLUDING ALL THE SOFTWARE) DELIVERED TO PURCHASER HEREUNDER ARE NOT FAULT-TOLERANT AND ARE NOT DESIGNED, MANUFACTURED OR INTENDED FOR USE OR RESALE IN APPLICATIONS WHERE THE FAILURE, MALFUNCTION OR INACCURACY OF PRODUCTS CARRIES A RISK OF DEATH OR BODILY INJURY OR SEVERE

PHYSICAL OR ENVIRONMENTAL DAMAGE ("HIGH RISK ACTIVITIES"). HIGH RISK ACTIVITIES MAY INCLUDE, BUT ARE NOT LIMITED TO, USE AS PART OF ON-LINE CONTROL SYSTEMS IN HAZARDOUS ENVIRONMENTS REQUIRING FAIL-SAFE PERFORMANCE, SUCH AS IN THE OPERATION OF NUCLEAR FACILITIES, AIRCRAFT NAVIGATION OR COMMUNICATION SYSTEMS, AIR TRAFFIC CONTROL, LIFE SUPPORT MACHINES, WEAPONS SYSTEMS OR OTHER APPLICATIONS REPRESENTING A SIMILAR DEGREE OF POTENTIAL HAZARD. CHINA STARWIN SPECIFICALLY DISCLAIMS ANY EXPRESS OR IMPLIED WARRANTY OF FITNESS FOR HIGH RISK ACTIVITIES.

(b) PURCHASER'S SOLE REMEDY FOR BREACH OF THE EXPRESS WARRANTIES ABOVE SHALL BE REPLACEMENT OR REFUND OF THE PURCHASE PRICE AS SPECIFIED ABOVE, AT CHINA STARWIN'S OPTION. TO THE FULLEST EXTENT ALLOWED BY LAW, THE WARRANTIES AND REMEDIES SET FORTH IN THIS AGREEMENT ARE EXCLUSIVE AND IN LIEU OF ALL OTHER WARRANTIES OR CONDITIONS, EXPRESS OR IMPLIED, EITHER IN FACT OR BY OPERATION OF LAW, STATUTORY OR OTHERWISE, INCLUDING BUT NOT LIMITED TO WARRANTIES, TERMS OR CONDITIONS OF MERCHANTABILITY, FITNESS FOR A PARTICULAR PURPOSE, SATISFACTORY QUALITY, CORRESPONDENCE WITH DESCRIPTION, NON-INFRINGEMENT, AND ACCURACY OF INFORMATION GENERATED. ALL OF WHICH ARE EXPRESSLY DISCLAIMED. CHINA STARWIN'S WARRANTIES HEREIN RUN ONLY TO PURCHASER, AND ARE NOT EXTENDED TO ANY THIRD PARTIES. CHINA STARWIN NEITHER ASSUMES NOR AUTHORIZES ANY OTHER PERSON TO ASSUME FOR IT ANY OTHER LIABILITY IN CONNECTION WITH THE SALE, INSTALLATION, MAINTENANCE OR USE OF ITS PRODUCTS.

Limitation of Liability

(a) CHINA STARWIN SHALL NOT BE LIABLE TO THE PURCHASER OR TO ANY THIRD PARTY, FOR ANY LOSS OF PROFITS, LOSS OF USE, INTERRUPTION OF BUSINESS OR FOR ANY INDIRECT, SPECIAL, INCIDENTAL, PUNITIVE OR CONSEQUENTIAL DAMAGES OF ANY KIND, WHETHER ARISING UNDER BREACH OF CONTRACT, TORT (INCLUDING NEGLIGENCE), STRICT LIABILITY OR OTHERWISE AND WHETHER BASED ON THIS AGREEMENT OR OTHERWISE, EVEN IF ADVISED OF THE POSSIBILITY OF SUCH DAMAGES.

(b) TO THE EXTENT PERMITTED BY APPLICABLE LAW, IN NO EVENT SHALL THE LIABILITY FOR DAMAGES HEREUNDER OF CHINA STARWIN OR ITS EMPLOYEES OR AGENTS EXCEED THE PURCHASE PRICE PAID FOR THE PRODUCT BY PURCHASER, NOR SHALL THE AGGREGATE LIABILITY FOR DAMAGES TO ALL PARTIES REGARDING ANY PRODUCT EXCEED THE PURCHASE PRICE PAID FOR THAT PRODUCT BY THAT PARTY (EXCEPT IN THE CASE OF A BREACH OF A PARTY'S CONFIDENTIALITY OBLIGATIONS).

Electronic Emission Notices

Operation is subject to the following two conditions:

1. This device may not cause harmful interference.
2. This device must accept any interference received, including interference that may cause undesired operation.

Safety Considerations

For the following safety considerations, "Instrument" means the 'HSA-FUF' units, components and their cables.

It is necessary to read the instructions carefully before using the HSA-FUF. The HSA-FUF usage shall be carried out in accordance with the described steps and methods to ensure the safety and accuracy of equipment operation.

For the following safety reasons, the "Operating Manual" is intended for the components of the portable satellite communication station and its cables. The manual must be read carefully before using the portable satellite communication station. The terminal should be used in accordance with the steps and methods described to ensure safe and accurate operation of the equipment.

Radio

The instrument transmits radio energy during normal operation. To avoid possible harmful exposure to this energy, do not stand or work for extended periods of time in front of its antenna. The long-term characteristics or the possible physiological effects of Radio Frequency Electromagnetic fields have not been yet fully investigated.

The device emits radio energy during normal operation. To avoid possible harmful exposure, do not stand in front of the antenna or work for long periods of time. The potential physiological effects caused by radiofrequency electromagnetic fields have not been fully studied.

Caution

1. To avoid electrical shock, do not perform any servicing unless you are qualified to do so.
2. Before connecting this instrument to the power line, make sure that the voltage of the power source matches the requirements of the instrument.

Disposal of Electronic and Electrical Waste

Pursuant to the WEEE EU Directive electronic and electrical waste must not be disposed of with unsorted waste. Please contact your local recycling authority for disposal of this product.

Important Notice

This user manual is delivered subject to the following conditions and restrictions:

- This manual contains proprietary information belonging to China Starwin Science & Technology Co., Ltd. Such information is supplied solely for assisting properly authorized users of the respective China Starwin products.
- No part of its contents may be used for any other purpose, disclosed to any person or firm or reproduced by any means, electronic and mechanical, without the express prior written permission of China Starwin Science & Technology Co., Ltd.
- The text and graphics are for the purpose of illustration and reference only. The specifications on which they are based are subject to change, without prior notice.
- The software described in this document is furnished under a license. The software may be used or copied only in accordance with the terms of that license.
- Information in this document is subject to change without prior notice.
- China Starwin Science & Technology Co., Ltd. reserves the right to alter the equipment specifications and descriptions in this publication without prior notice. No part of this publication shall be deemed part of any contract or warranty unless specifically incorporated by reference into such contract or warranty.
- The information contained herein is merely descriptive in nature and does not constitute an offer for the sale of the product described herein.
- Any changes or modifications of the equipment, including opening of the equipment when not expressly approved by China Starwin Science & Technology Co., Ltd., will void equipment warranty and any repair thereafter shall be liable to a charge. It may also void the user's authority to operate the equipment.

Some of the equipment provided by China Starwin and specified in this manual, is manufactured and warranted by third parties. All such equipment must be installed and handled in full compliance with the instructions provided by such manufacturers as attached to this manual or provided thereafter by China Starwin or the manufacturers. Non compliance with such instructions may result in serious damage and/or bodily harm and/or void the user's authority to operate the equipment and/or revoke the warranty provided by such manufacturer.

The HSA-FUF is a full satellite earth station system for communication in Ku-band. The satellite parameters shall be selected only according to the specific user conditions required.

The China Starwin HSA-FUF User Manual provides operational instructions, for the device, which are standard for applications in Ku-band. However, the specific modem and antenna electrical performance parameters need to be taken in account. This manual is intended for technicians responsible for the installing, setting up and operating of the HSA-FUF and for system administrators who are responsible for managing the system.

1 Introducing HSA-FUF Terminal

The HSA-FUF terminal is a two-dimensional Ku band hybrid steering phased array terminal, with a fully dimension phased-array antenna (768 units each for Tx and Rx, with integrated FPGA beam processing circuit) on the antenna panel, compensate mechanical adjustment; The antenna body adopts an integrated design, integrating the self-developed Ku band distributed transmit driven power amplifier, low loss receiving combined network, single Tx/Rx Ku band frequency conversion transceiver (built-in low phase noise local oscillation source), power management module, modem module, etc.; The two-dimensional hybrid steering (electric steering + mechanic steering) method can ensure that the phased array panel is always aligned with the satellite roughly in the normal direction, the Tx/Rx performance is basically equivalent to the dual channel number of full electronic steering performance, with highly integrated, low cost, low power consumption, high performance, fast satellite tracking and satellite switching characteristics, etc. The appearance is shown in Figure 1-1.



Figure 1-1 HSA-FUF Terminal

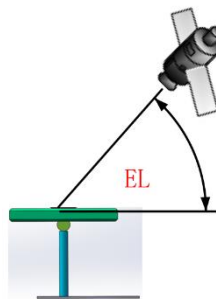
Compared to full electronic steering phased array terminals, HSA-FUF terminals of fixed in different satellite environments of HTS, GEO, MEO and LEO, through the innovative application of phased array technology and the combination of the compensating effect of mechanical adjustment, making full use of hybrid steering technology, under the condition of limited number of array unit channels. Higher Tx/Rx performance, lower array channel cost, and overall power consumption are also lower.

2 Terminal Features

- ❖ High speed tracking: Fully electronic steering satellite beam
- ❖ High integration: All in one, phased array, ACU, satellite Modem, Up&Down Converter are all integrated in one outdoor unit
- ❖ High reliability: Solid State circuit, no moving mechanical parts inside
- ❖ Simple Setting up: No need satellite technician for installation, cabling, connection and commission etc.
- ❖ Easy Operation: Access satellite broadband in wireless way by smartphone or laptop.
- ❖ Scalable Option: Can be scalable per request
- ❖ Wide application: Work for mobile broadband connectivity under GEO, MEO and LEO.
-Land (Fixed Platform)
- ❖ Cost Effectiveness: Fully R&D and production by Starwin come down production cost

3 Technical Specification

Ku Band Hybrid ESA Terminal			
Overall Specifications of Terminal			
Model	HSA-FUF	Static Capture Time of First Boot	≤ 2min
Name	KoalaWin		
Type	Ku band Hybrid ESA Fixed Terminal	Mechanical Steering Type	Manual
Tx	14.0 ~ 14.5 GHz	Recapture Time After Loss	< 15sec (Duration of occlusion ≤5min)
Rx	10.7 ~ 12.75 GHz		<25sec (Duration of occlusion >5min)
Tracking Accuracy	≤ 0.2°	Applicable Satellite Type	HTS GEO, MEO and LEO
Rx LO.	9.75/10.6 GHz	Tx LO.	12.8 GHz
Scan Mode	Hybrid Steering (2D Electronic Steering + 2D Mechanical Steering)	Beam Switching Time	≤ 3ms
IF Specifications			
Input Power (Modem Output)		-35 ~ 0dBm	
IF Input (Modem Output)		0.95 GHz ~ 1.7 GHz	
IF Output (Modem Input)		0.95 GHz~2.15 GHz	
Internal Modem	Customized	External Modem	Customized
RF Specifications			
EIRP	≥ 43dBW@ Normal	G/T	≥ 9.5dB/K@ Normal

Polarization	Full polarization, automatic switching	Azimuth Range	Unlimited
X-Pol Isolation	>30dB @90°	Hybrid Elevation Steering Range 	0° ~ 180° (90° means the antenna is horizontal)
Interface			
Power Interface	Waterproof Quick Plug	Network Interface	Waterproof Quick Plug
IF Interface (Tx)	SMA	IF Interface (Rx)	SMA
Physical Dimensions and Electrical Specifications			
Outline Dimension	595×585×350mm	Power Input (With Adapter)	AC 90 ~ 264V/50Hz
Weight	≤ 15 kg	Power Input (Without Adapter)	DC 28V±5%
Power Consumption	≤ 350 W		
Environmental Specifications			
Wind Speed Fixed	The terminal works normally when the wind speed is in the range of 24.5-28.4m/s (88.2-102.24Km/h) (47.5-55.3 mph)	Ingress Protection	IP66
Operation Temperature	-25℃ ~ +55℃ (Standard) -40 ℃ ~ +70 ℃ (Customizable)	Storage Temperature	-40 ℃ to +85 ℃
Humidity	5 ~ 95%		

4 Packing List

(1) External Packing of Terminal as Follows:

- ❖ Terminal
- ❖ Power adapters (adapters are configured according to the user's location)
- ❖ Network cable
- ❖ RF cable
- ❖ Mounting accessories
- ❖ Other customized accessories
- ❖ User manuals

(2) Internal Packing of Terminal as Follows:

- ❖ Fully electronic steering phased array antenna
- ❖ Converter components
- ❖ GPS module
- ❖ Heat dissipation components
- ❖ Satellite searching control and power supply module
- ❖ Wireless router
- ❖ Modem module

4.1 Unpacking and Inspection

When you receive the system containers, unpack and inspect the components and hardware to ensure that all parts have been received in good condition. The box should contain the items listed as below:

Item	Photo	Part Name	Quantity	Remarks
1		HSA-FUF Terminal	1	Standard
3		Bracket	1	Standard
4		Hardware Components	1	Standard
5		Adapter board	1	Standard
6		Network Cable	1	Standard
7		Power Adapter	1	Standard
8		RF Cable	2	Standard
9		Carton Box	1	Standard
10	/	Mounting Accessories	1	Standard
11	/	User Manual	1	Standard

4.2 Freight Damage

If any parts appear to have been damaged in transit, immediately contact the freight carrier.

4.3 Material-Missing or Damage

If any parts appear to be missing or damaged, but not as a result of handling in transit, contact your dealer or distributor.

4.4 Terminal Access Details

❖ Terminal Serial NO.(S/ N):

XXXXXXXXXXXX (XXXX is the number of the following equipment)

❖ Modem:IQ200 (Take the IQ200 as example)

IP:192.168.0.1

User: admin Password: iDirect

❖ DVB:

IP:192.168.0.2

User: N/A Password: N/A

❖ Wi-Fi Router:

SSID: HI_LINKxxxxx Password: 12345678

Default IP Address: 192.168.0.254

Login Username: admin Login Password: admin

4.5 Matters Needing Attention

- (1) The Terminal is a valuable instrument - treat it with care.
- (2) Store the Terminal in a dry environment.
- (3) After use in rainy and snowy weather, the Terminal shall be dried and stored.

5 Terminal Mechanical Layout

5.1 Structure Diagram

As shown in Figure 5-1, the Terminal mainly consists of the antenna body and the electrically adjustable turntable.

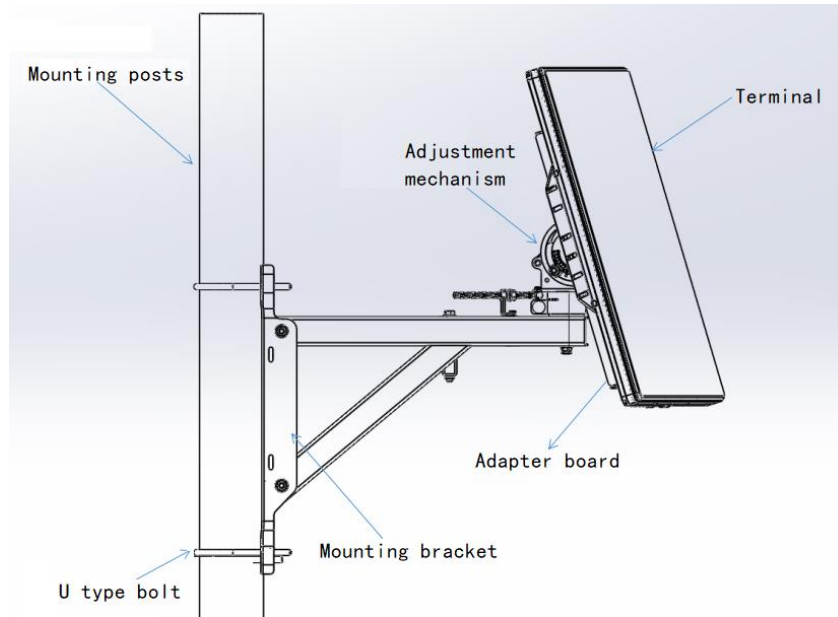


Figure 5-1 Terminal Structure Diagram

5.2 Terminal Dimensions

Terminal appearance and dimension drawing (unit: mm), as shown in Figure 5-2.

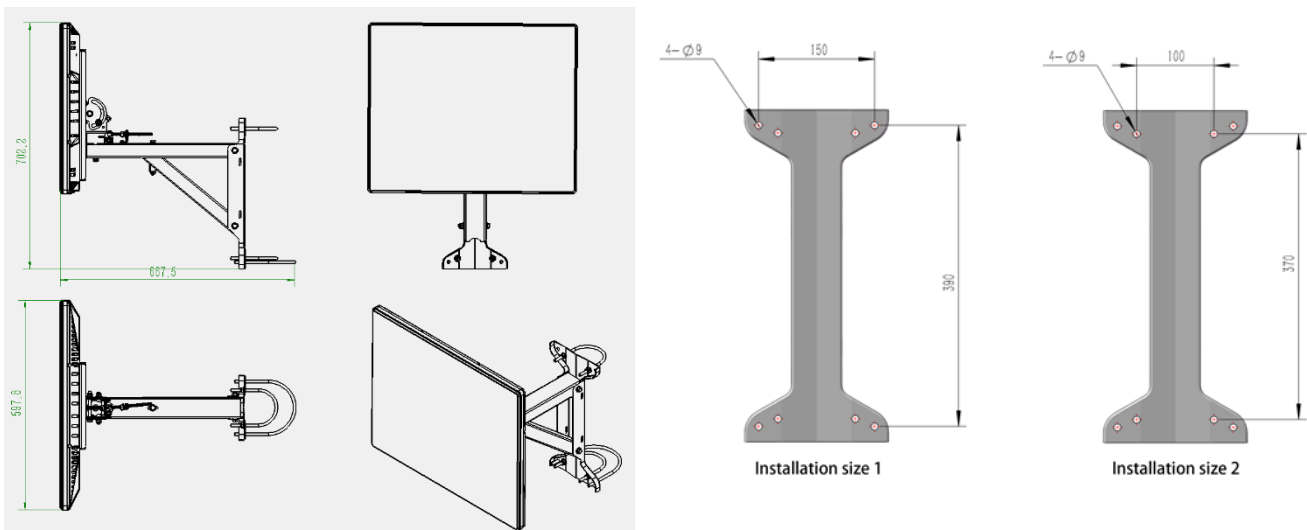


Figure 5-2 Terminal Dimensions and The position of installation hole

5.3 Terminal Installation

Remove the HSA-FUF terminal and mounting profile from the box, fix the mounting profile to the surface to be mounted (e.g. vehicle luggage rack) with screws and nuts, align the 4 fixing holes of the terminal turntable with the holes in the mounting profile, the screws pass through 4 mounting holes and tighten them with nuts as shown in Figure 5-6.

The antenna can be fixed on the wall by the wall mounting type, and it can be fixed on the trunk or pole by the steel hoops.

i. Install the adapter board on the Terminal

Install the adapter plate on the Terminal using screws and nuts as shown in Figure 5-3.

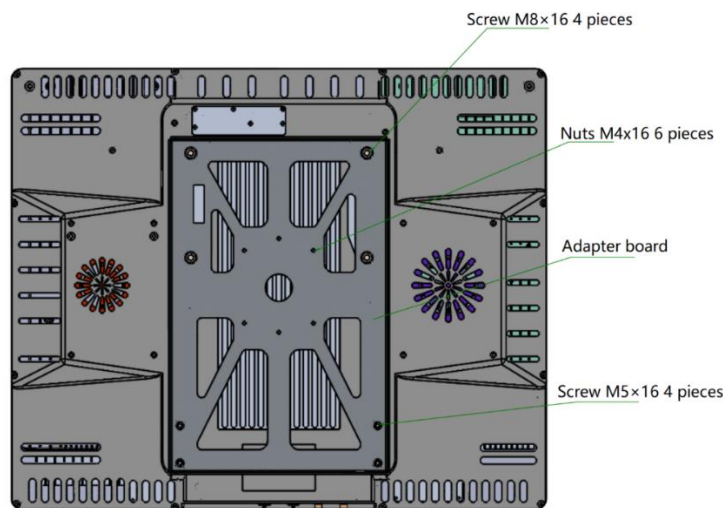


Figure 5-3 Installation diagram of the bracket

ii. Installation diagram of the bracket

Complete the bracket with screws and nuts as shown in Figure 5-4.

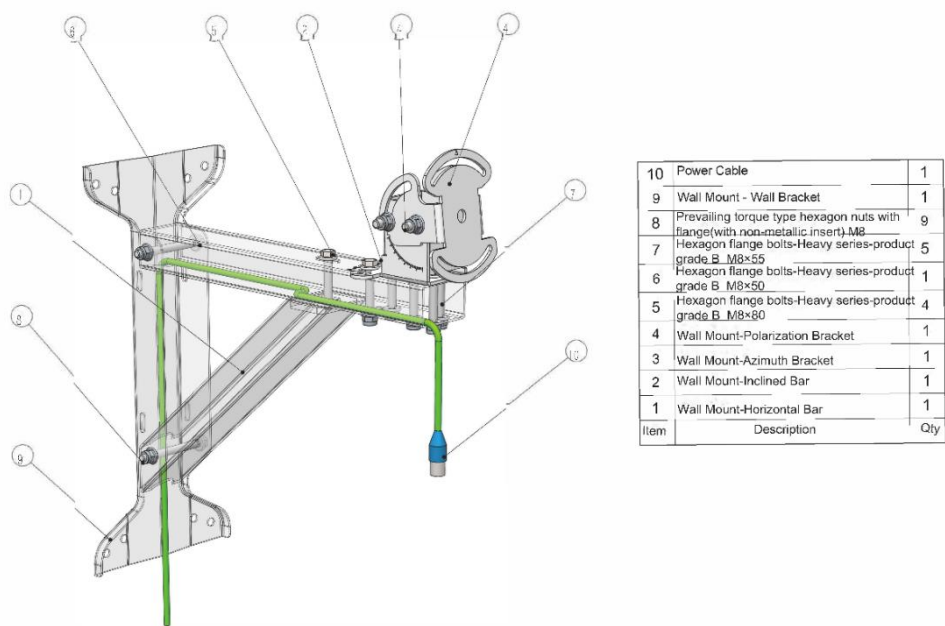


Figure 5-4 Installation diagram of the bracket

iii. Install the bracket on the pole with U type bolt(steel hoops)

The installation of the bracket is shown as shown in Figure 5-5.

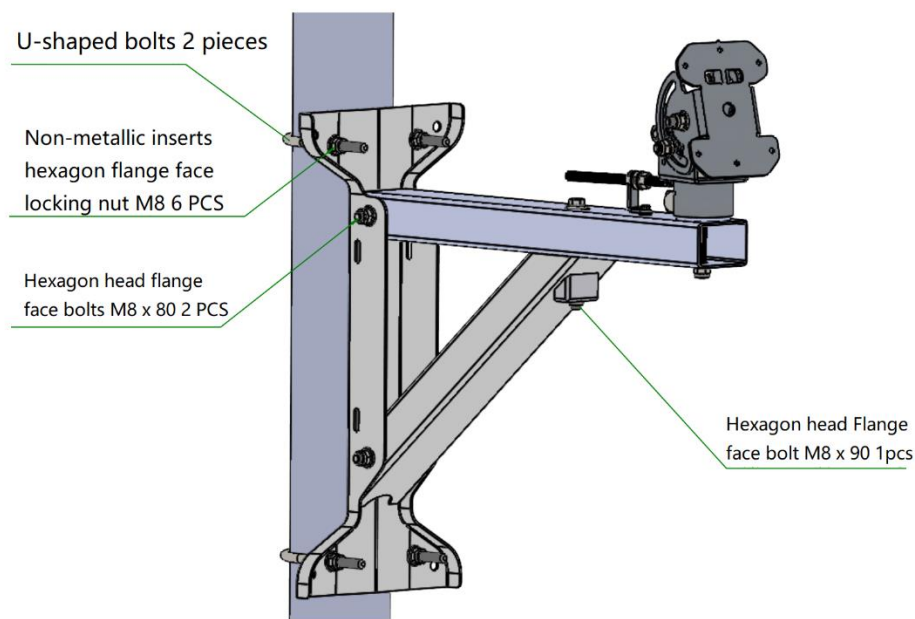


Figure 5-5 Installation diagram of the bracket

iv. Install the Terminal whose adapter has been installed to the bracket

Special Note: During the first installation, ensure that Terminal’s antenna array is roughly aligned with the direction of the target satellite.

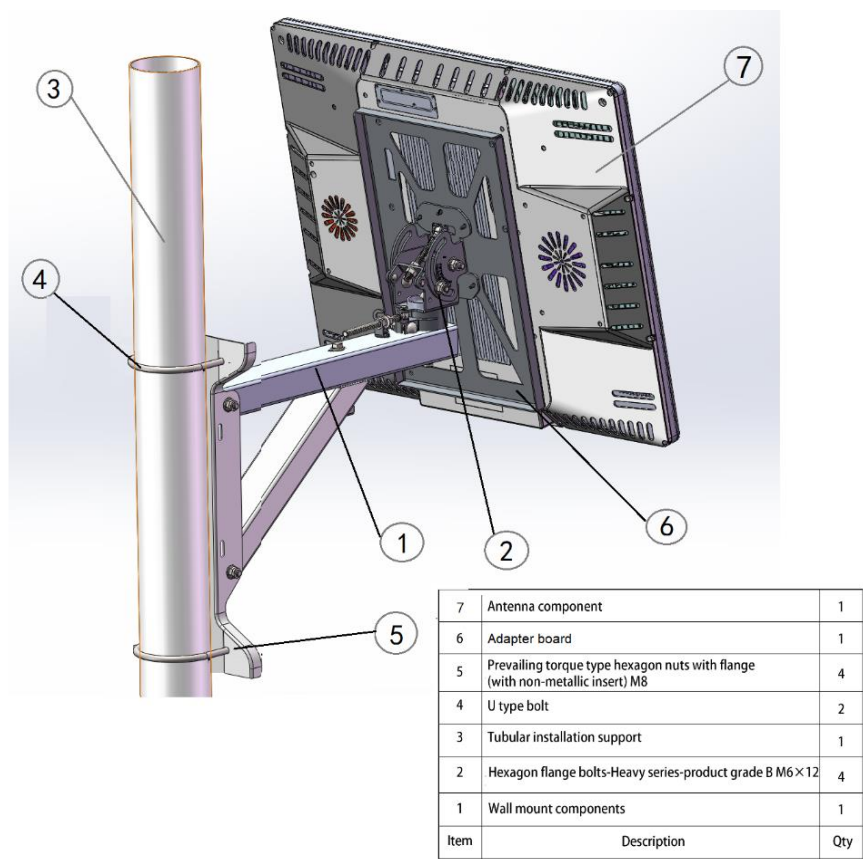


Figure 5-6 Installation diagram of the steel hoops type

6 Interface Definition and Access

6.1 Interface Definition

There are five main interfaces between the main body of the terminal and the physical interface of the turntable as follows:

- Power Port:** Industrial grade waterproof aviation plug, connected with an adapter;
- LAN Port:** Industrial grade waterproof aviation plug, connected with a network cable;
- RF Port:** SMA interface, connected with an RF cable when an external modem is used;
- Switch Button:** When the Terminal off, press once briefly to switch the Terminal on, press once more briefly to switch the Terminal off;

Status Indicator:

Description of the Indicator Status	
Green Quick Flash	Aligning Satellite
Green Slow Flash	Satellite Alignment Completed
Always on red	Fault Prompt

The specific interfaces are defined as shown in Figure 6-1 below.

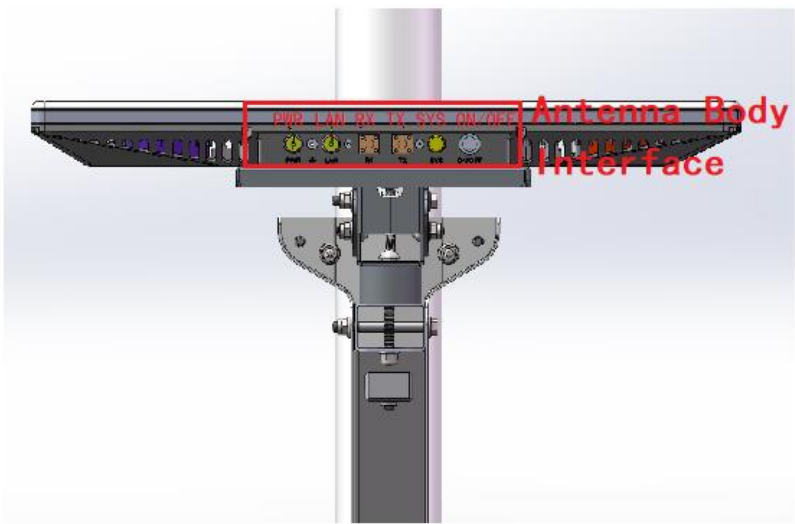


Figure 6-1 HSA-FUF Interface Definition

PWR (Antenna Body)	Power Supply Cable Port
LAN (Antenna Body)	Network Cable Connect Port
RX	RF Rx Port
TX	RF Tx Port
SYS	Status Indicator
ON/OFF	Power On or Off the Terminal
LAN (Turntable)	Network Cable Connect Port
PWR (Turntable)	Power Supply Cable Port

6.2 Interface Access

6.2.1 Power Supply Access

Insert the red dot on the aviation plug end of the matching power adapter, aligning it with the red dot on the PWR connector of the turntable, and then insert the plug end of the adapter connect to 220V AC power. As shown in Figure 6-2.

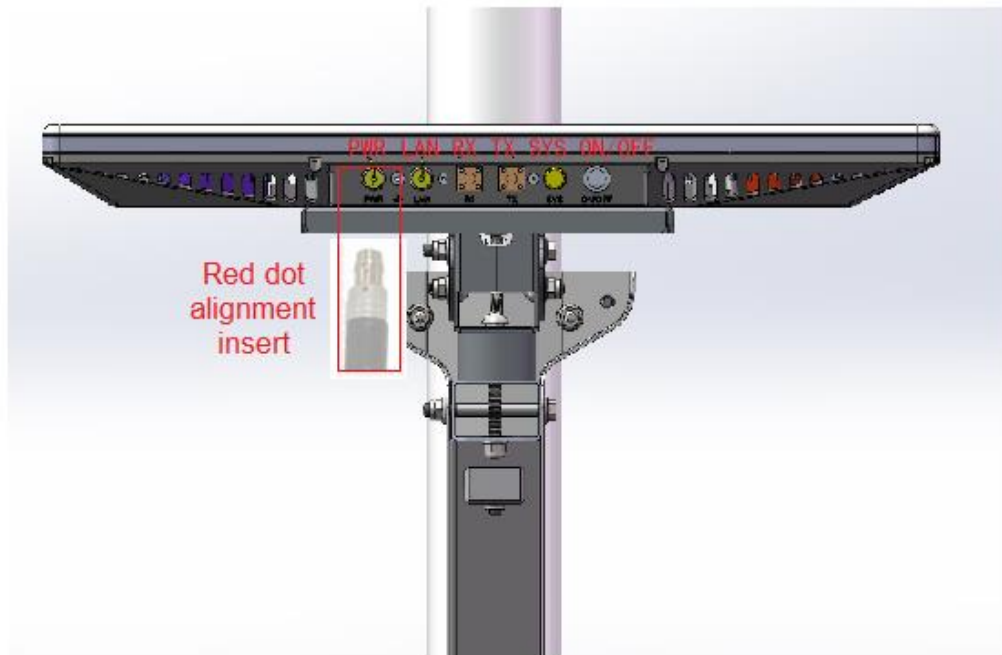


Figure 6-2 Power Supply Access

6.2.2 Data Access

The HSA-FUF Terminal has two types of data access: Wired access and Wireless access.

Wired Access: Use the matching network cable access to insert the red dot of the aviation plug end of the cable against the red dot of the LAN port of the Terminal, and another end into the RJ45 interface of the wired network equipment, as shown in Figure 6-3.

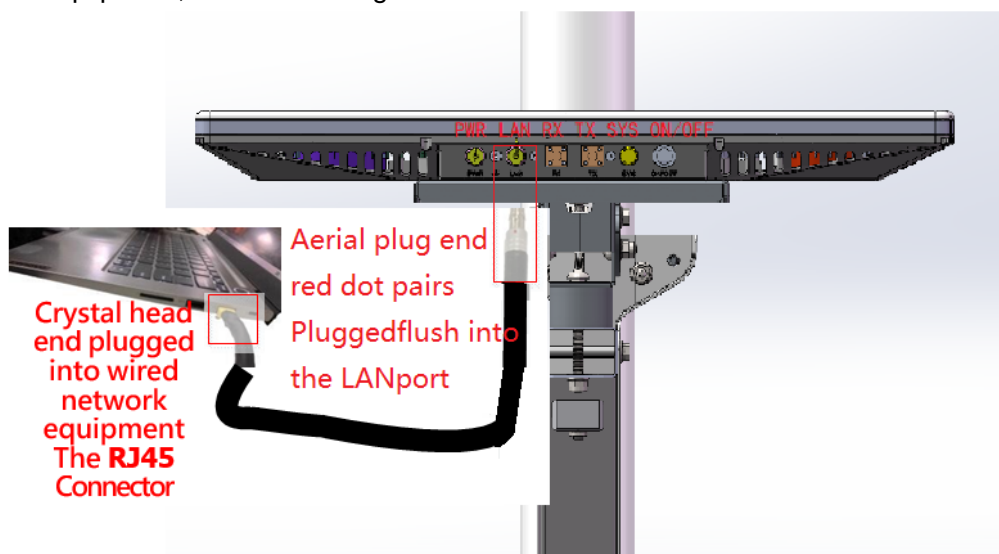
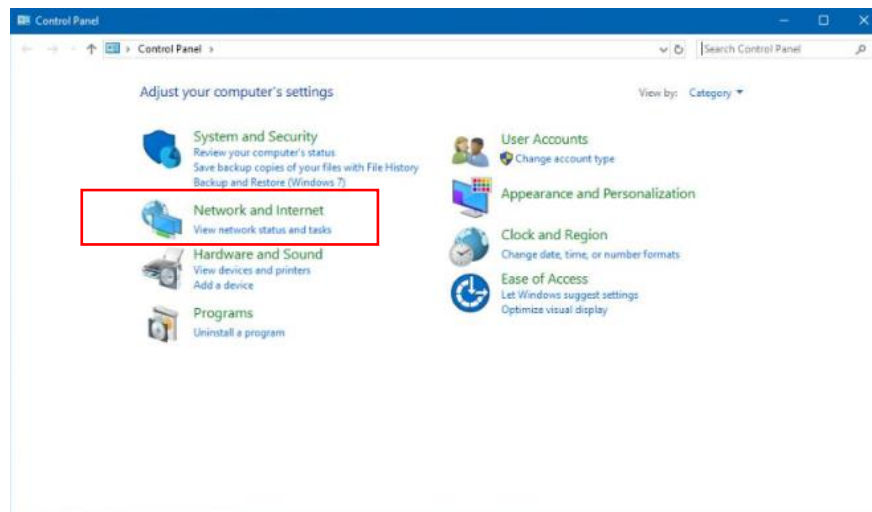


Figure 6-3 Data Access

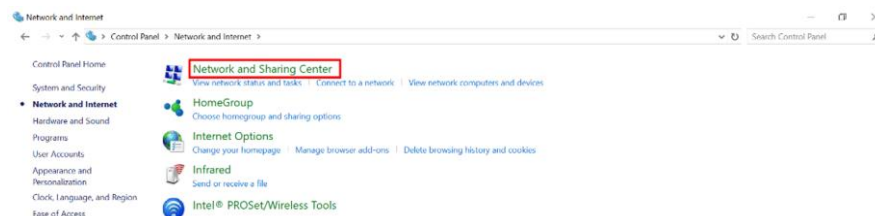
Wireless Access (WiFi Access): Refer to the Terminal WiFi SSID and password described in **Section 4.4 User access information**, use a device with WiFi function to search for the WiFi SSID issued by the HSA-FUF Terminal and enter the corresponding password to connect.

Before carrying out service data transmission, the IP transfer mode of the wired network equipment needs to be set to DHCP, as follows.

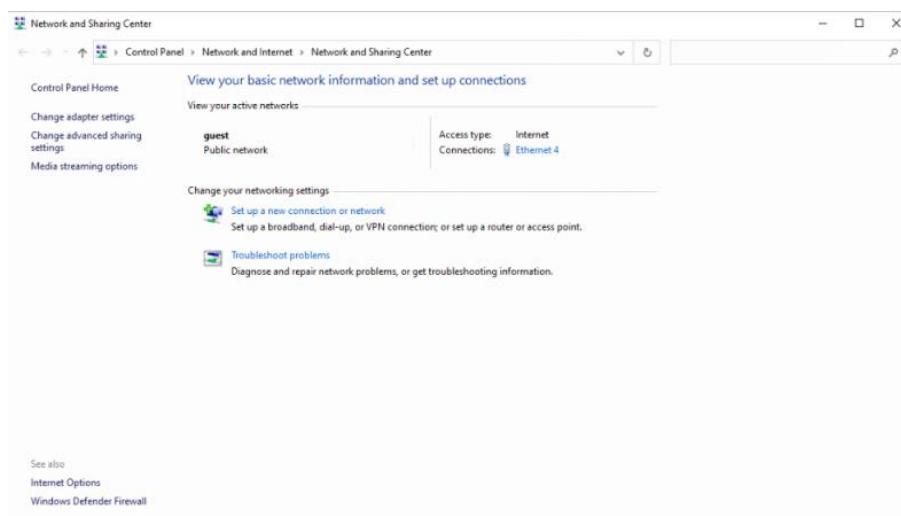
(1) In the Control Panel, click on "Network and Internet"



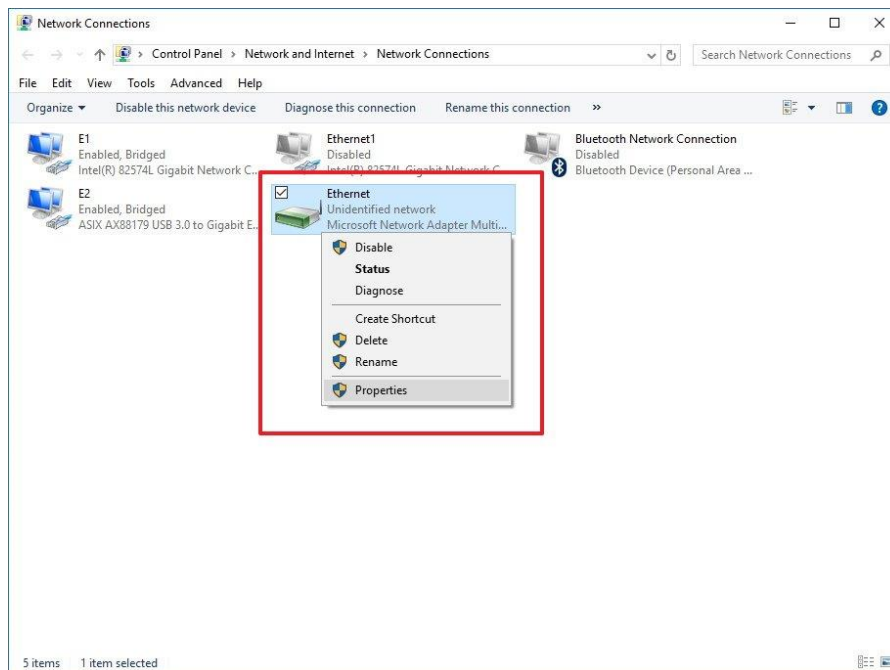
(2) Click on "Network and Sharing Centre" and go to the next level.



(3) Click on "Change adapter settings" to access the network adapter menu.

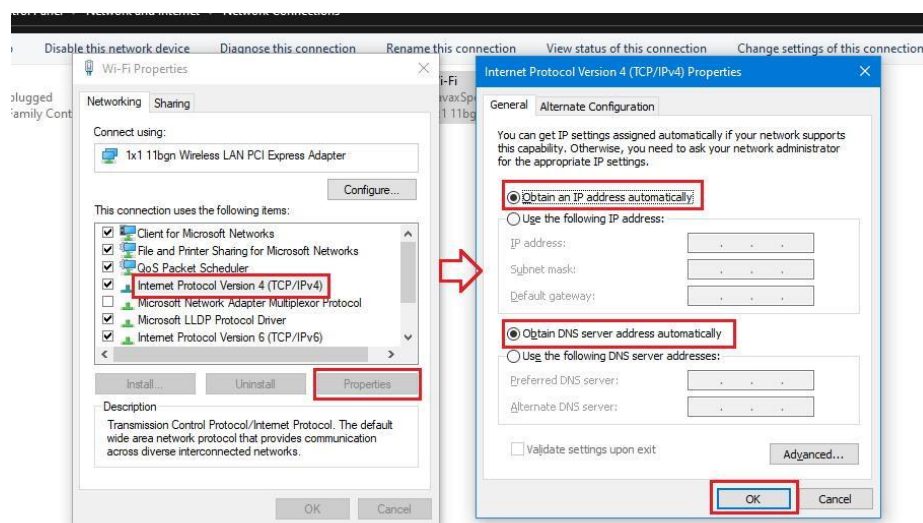


(4) Right-click on "Ethernet" and select "Properties".



(5) Double-click on "Internet Protocol Version 4 (TCP/IPV4)" to go to the next level of general settings.

(6) Click on the radio button before "Obtain IP address automatically", click on the radio button before "Obtain DNS server automatically" and finally click on the confirm button.



6.2.3 RF Cable Access

When external modem is connected, one end of the RF cable is connected to the terminal RF transmitting port and the other end is connected to the modem RF transmitting port; Then the other RF cable is connected to the terminal RF receiving port at one end and the modem RF receiving port at the other end. As shown in Figure 6-4.

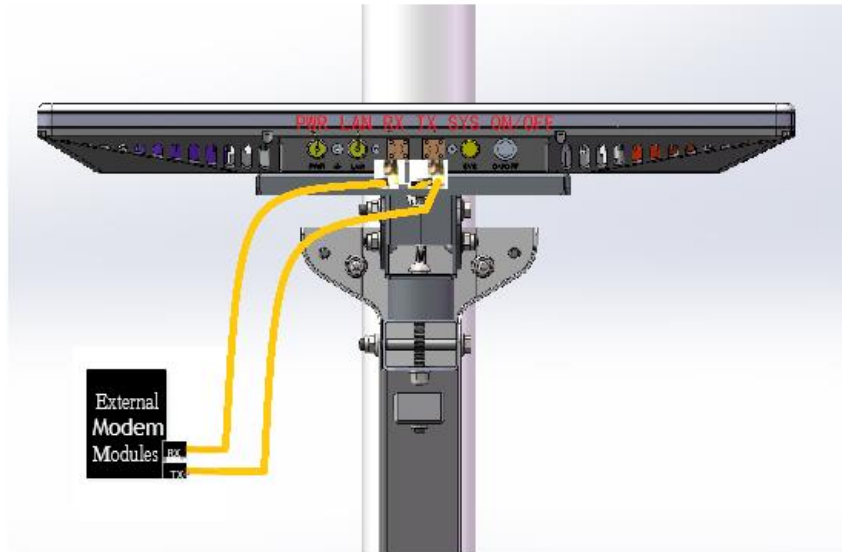


Figure 6-4 RF cable access

7 Terminal Alignment

The terminal is equipped with the function of automatically acquiring location information. In case of obstruction or weak GPS signal, the automatic acquisition of satellite information may be delayed and alignment cannot be performed until the location information is determined. In this case, the GPS location information can be entered manually by refer to **Section 8.4**.

7.1 Basic Alignment Operation



Note: Do not artificially block the movement of the Terminal panel after it has moved up; If there is any abnormal movement, power should be disconnected immediately.

- a) Switch on the power, press the ON/OFF button briefly to switch on, the terminal body will start elevation calibration and start acquiring GPS in a horizontal position.
- b) After the GPS has obtained the position information, the terminal will start to align the satellite automatically, at this time the terminal light flashes green; After the satellite have been successfully aligned, the Terminal will automatically control the network access, at this time the light flashes green slowly.

Note: For the setting of satellite searching parameters, refer to **Section 8.3** for satellite parameter settings.

The Terminal direction can be adjusted by adjusting the three-axis adjusting mechanism as follows shown in Figure 7-1 、 Figure 7-2、 Figure 7-3 .

1. Adjust the direction of the azimuth, reference display indicator as shown in figure 7-1.



Figure 7-1 Azimuth adjustment diagram

2. Adjust the direction of the elevation, reference display indicator as shown in Figure 7-2.



Figure 7-2 Elevation adjustment diagram

3. Adjust the direction of the polarization, reference display indicator as shown in figure 7-3.



Figure 7-3 Polarization adjustment diagram

7.2 Status Checking

For the description of checking the status of satellite alignment, refer to **Section 8.3** and **8.4**.

8 Terminal Web UI Using Guidance

8.1 Web Login

- ① After performing the data access operation according to **Section 6.2.2**, open the Edge browser or Chrome and enter 192.168.0.2 in the URL bar to enter the login screen as shown in Figure 8-1.

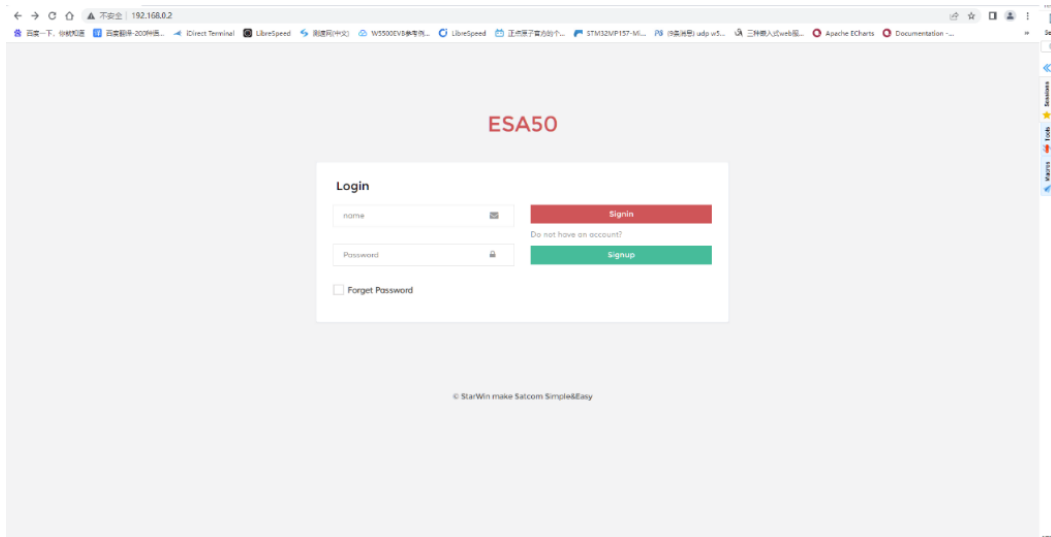


Figure 8-1 Login Interface

- ② Click on the Signin button (no account password required) to access the main screen, as shown in Figure 8-2.

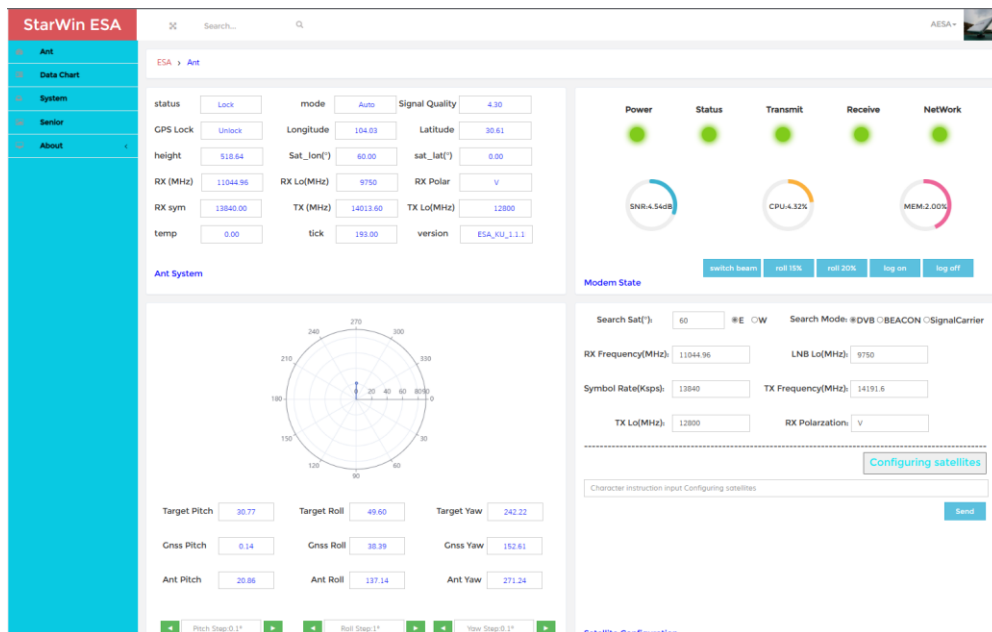


Figure 8-2 Main Interface

8.2 Web Page Introduction

The main interface is divided into left and right sides, with the left side being the contents bar and the right side being the information display bar, as shown in Figure 8-3 below.

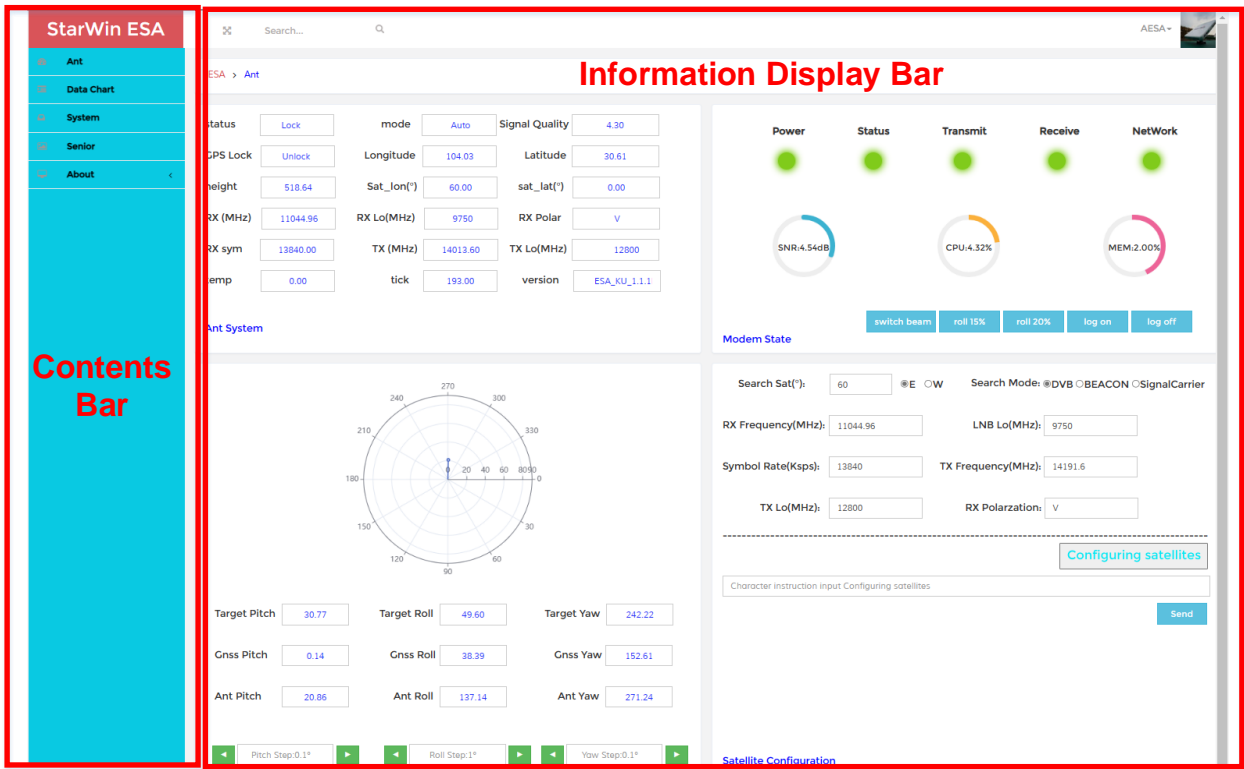


Figure 8-3 Web Page Introduction

The contents bar shows the framework of the interface contained in the page and serves as navigation; The information display bar, which is used to show the content of the selected interface. The comparison table of the meaning of the contents bar is as follows:

Ant	Antenna Main Control Interface
Data Chart	Dynamic Data Interface
System	Firmware Interface
Senior	Space-Earth Integrated Interface
About	FAQ

8.3 Antenna Main Control Interface (Ant)

The interface, which consists of four main modules, Ant System, Modem State, Attitude Control and Satellite Configuration, as shown in Figure 8-4.

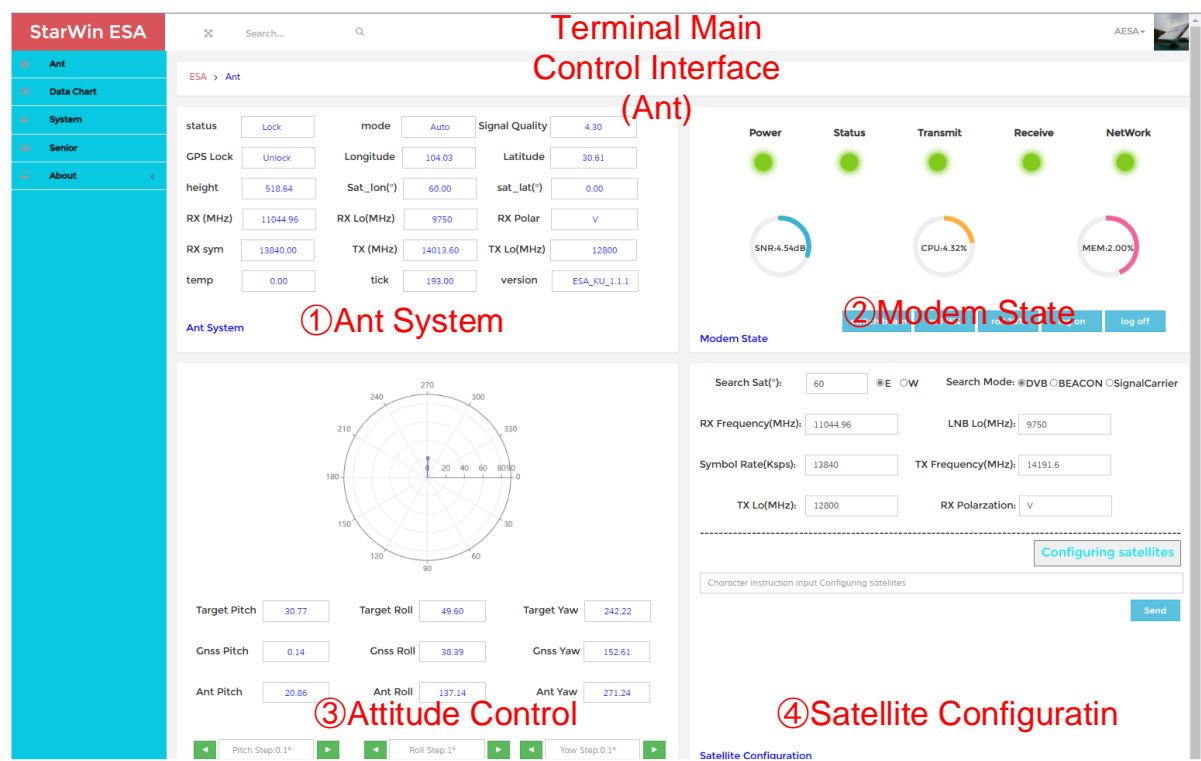


Figure 8-4 Composition of the antenna main control interface

In this interface, you can view antenna status information, Modem status, real-time attitude information, satellite information; switch beams, configure satellite parameters, manually control the attitude of the equipment and other operations. The detailed content functions are shown in Table 8.1 below.

Table 8.1 Antenna Main Control Interface Menu

Modules	Contents	Role	Remarks
Ant System	Terminal Status	Real-time display of antenna status and parameter status	
	Working Mode		
	Signal Quality		
	GPS Lock Status		
	GPS Latitude and Longitude		
	Longitude of the satellite being used		
	Rx Frequency		
	Rx Local Oscillation		

	Rx Symbol Rate		
	Rx Polarization		
	Tx Frequency		
	Tx Local Oscillation		

	Panel Temperature		
	Running Time Stamp		
	Software Versions		
Modem State	Modem Power Status Indicator	Real-Time Display	
	Rx Status Indicator		
	Tx Status Indicator		
	Network Access Status Indicator		
	SNR Display		
	CPU Percentage Display		
	MEM Percentage Display		
	Switching Beams	Control	
	15%, 20% roll-off	Modify and adapt to different satellites	
	OpenAMIP's log printing on and off	Control	Print window for kernel user terminals
Attitude Control	Attitude Target Angle	Real-time calculation display	
	Attitude Real-Time Angle	Real-time display	
	Antenna Pointing Angle	Real-time calculation display	

	Tri-axis angle setting	Manual Control	Press the left button to decrease and the right button to increase, filling in the step values in between; Judge whether the modification is successful by viewing the real-time angle
Satellite Configuration	Terminal Longitude	Satellite Parameters Configuration	
	Search Mode		Mode fixed to DVB, no other modes available
	Rx Frequency		
	Rx Local Oscillation		
	Polarization		
	Symbol Information Rate		
	Tx Frequency		
	Tx Local Oscillation		If the transmitting parameters cannot be determined, the antenna default parameters
	Satellite Alignment Calculation	Calculate the standard alignment satellite angle	Function not open
	Configuring Satellites	Configure satellite parameter issue button	
	Character Instruction Input Configuring Satellites	Near-orbiting satellites, input Ephemeris characters	Click "send" to send

8.4 Dynamic Data Interface (Data Chart)

The interface, which is divided into four main modules: AGC&SNR display, Internal and External Modem Switching, GPS Configuration, and Log Printing, as shown in Figure 8-5.

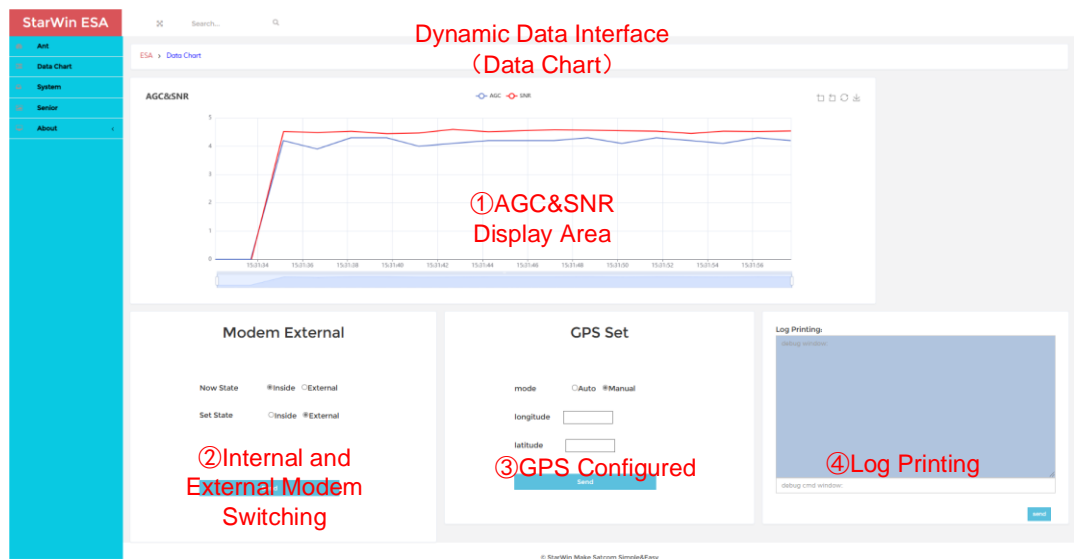


Figure 8-5 Data Dynamic Interface Composition

In this page, you can view the status graph of AGC&SNR; GPS settings, Modem internal and external, etc. See Table 8.2 for specific content functions.

Table 8.2 Data Dynamic Interface Menu

Modules	Contents	Function	Remarks
AGC&SNR	Real-time curves for AGC and SNR	Real-time display and check	
GPS Configuration	Mode Selection	Switching configurations	Automatic and Manual Modes
	GPS latitude and longitude	Input	
	Send Button	Issue Parameters	
Log Print	Printed Content Display Box	Display	
	Command Input	Control	
Internal and External Modem Switching	Current Status	Real-time display and check	
	Setting status	Internal and External Options	
	Send Button	Issue Parameters	

8.5 Firmware Interface (System)

This interface is mainly used for firmware burning and is not open to the public, as shown in Figure 8-6.

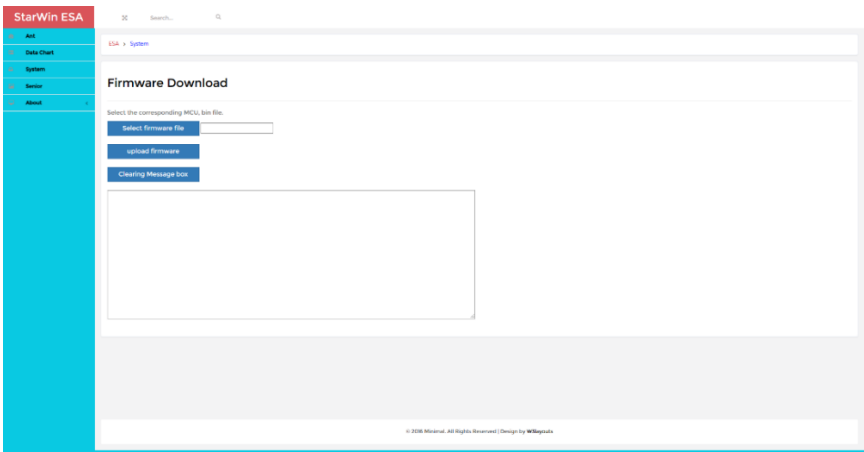


Figure 8-6 Firmware Interface

8.6 Space-Earth Integrated (Senior)

This interface mainly shows the integrated, global satellite terminal use, as shown in Figure 8-7.

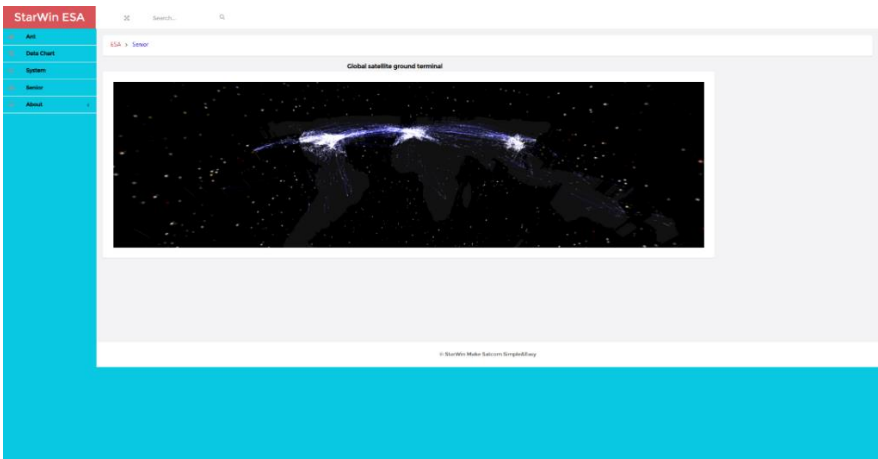


Figure 8-7 Space-Earth Integrated

8.7 FAQ

This page mainly displays some of the FAQs, as shown in Figure 8-8.

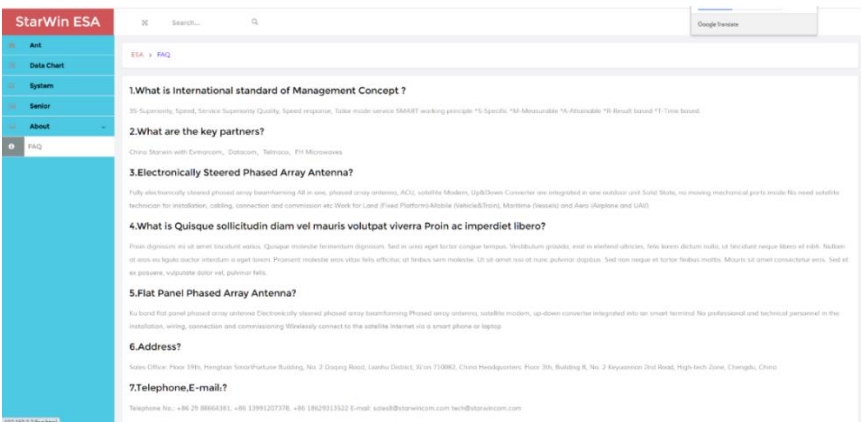


Figure 8-8 Frequently Asked Questions Page

9 Troubleshooting and Maintenance

9.1 Troubleshooting

Item	Problem and Indication	Corrective Action
1	Indicator light flashes red	Contact supplier
2	Antenna not working	Press the "POWER ON/OFF" button; Or reconnect the power
3	No GNSS signals acquisition	Verify the terminal is under the open sky/has an unobstructed view. Reboot
4	Terminal can not lock the satellite	Check whether the Terminal configuration parameters, and Modem configuration parameters are correct
5	Terminal aligns to the wrong satellite	Check web to re-enter satellite information
6	The display indicates the terminal is in normal operational state but there is no data transfer	Verify that LAN or Wi-Fi are properly connected

9.2 Maintenance

The HSA-FUF Terminal parameters and performance can remain stable and provide normal operation for at least 10 years under a regular maintenance schedule. The periodical maintenance work includes:

1. Antenna system - it is highly recommended that a comprehensive examination of the entire system is completed, periodically, along with a thorough check of all the adjustment mechanisms.
2. Visual verification of terminal protective casing surface damages. If there is a damage, the special spray (NOT included in the standard system configuration) should be applied.
3. Check that all the screw fastenings are tight.
4. Close check of the antenna to look for any damage or cracks.
5. Regular cleaning of the terminal and antenna radome surfaces. Remove all dust, dirt, condensed salt and other contamination that may harm the signal quality and the terminal's performance.

10 Technical Service Contact

China Starwin Science & Technology Co., Ltd

Phone: +86 29 88664381

E-Mail: tech@starwincom.com; support@starwincom.com

Web: <http://www.starwincom.com>

Address: Floor 17th, Hengtian Smart Fortune Building, No. 2 Daqing Road,
Lianhu District, Xi'an 710082, China

Garrett C. Hill

Chief

P: (707) 664-5710 | M:(707) 953-2589

E: garrett@x2n.com | W: x2nsat.com

X2nSat, Inc.

Petaluma Satellite Gateway and Network Operations Center

1310 Redwood Way, Suite C

Petaluma, CA 94954

Las Cruces Satellite Gateway and Network Operations Center

8811 Trigg Loop

Las Cruces, NM 88007

P: +1.888.4.X2NSAT

F: +1.707.664.5701

Emergency Support

P: +1.707.664.5119

11 Production Spec

Product Name:	Hybrid Electronic Steering Terminal
Model No.:	HSA-FUF,
Software	KU_1.12B
Hardware	HSA43095MUF-V2.0
Wi-Fi Specification:	802.11b/g/n-HT20: 2412 ~ 2462MHz 802.11n-HT40: 2422 ~ 2452MHz
Satellite Specification:	Transmit: 14.0~14.50GHz Receive: 10.70~12.75GHz
GNSS Specification:	GPS, BDS

Statement: There are no restrictions of use in Member States.

EU declaration of conformity

China Starwin Science & Technology Co., Ltd hereby declares that the device is in compliance with the essential requirements and other relevant requirements of RED Directive 2014/53/EU.

Technical Service Contact Information

China Starwin Science & Technology Co., Ltd

Phone: +86 29 88664381 E-Mail: tech@starwincom.com

Web: <http://www.chinastarwin.com>

Address: Floor 17th, Hengtian Smart Fortune Building, No. 2 Daqing Road, Lianhu District, Xi'an 710082, China

Garrett C. Hill

Chief

P: (707) 664-5710 | M:(707) 953-2589

E: garrett@x2n.com | W: x2nsat.com

X2nSat, Inc.

Petaluma Satellite Gateway and Network Operations Center

1310 Redwood Way, Suite C

Petaluma, CA 94954

Las Cruces Satellite Gateway and Network Operations Center

8811 Trigg Loop

Las Cruces, NM 88007

P: +1.888.4.X2NSAT

F: +1.707.664.5701

Emergency Support

P: +1.707.664.5119

FCC Statement

The device complies with part 15 of the FCC Rules. Operation is subject to the following two conditions:

1. This device may not cause harmful interference.
2. This device must accept any interference received, including interference that may cause undesired operation.

Any changes or modifications not expressly approved by the party responsible for compliance could void the user's authority to operate the equipment.

This equipment has been tested and found to comply with the limits for a Class B digital device, pursuant to part 15 of the FCC Rules. These limits are designed to provide reasonable protection against harmful interference in a residential installation. This equipment generates, uses and can radiate radio frequency energy and, if not installed and used in accordance with the instructions, may cause harmful interference to radio communications. However, there is no guarantee that interference will not occur in a particular installation. If this equipment does cause harmful interference to radio or television reception, which can be determined by turning the equipment off and on, the user is encouraged to try to correct the interference by one or more of the following measures:

- Reorient or relocate the receiving antenna.
- Increase the separation between the equipment and receiver.
- Connect the equipment into an outlet on a circuit different from that to which the receiver is connected.
- Consult the dealer or an experienced radio/TV technician for help.



Danger: FCC Radio Frequency Exposure Information

In order to comply with RF exposure requirements, antennas must be installed to ensure a minimum separation distance of at least 185cm (For out range of +5 degrees on-axis) and 3100cm (For +5 degrees on-axis) away from the body of the user, and must not be co-located or operating in conjunction with any other antenna or transmitter except in accordance with accepted multi-transmitter product procedures.

Appendix 1 Other Statements

Limitation of liability clause

Ltd. shall not be liable to the Buyer or any third party for any lost profits, loss of use, business interruption or any indirect, special, incidental, punitive or consequential damages of any kind, whether for breach of contract, tort (including negligence), strict liability or otherwise and whether based on this Agreement or otherwise, even if advised of the possibility of such damages.

Ltd. or its employees or agents in any case, except to the extent permitted by applicable law, for damages in excess of the purchase price paid by the buyer, nor shall the total liability of the parties for damages in respect of any product exceed the purchase price paid by such party for that product (except in the case of a breach of a party's duty of confidentiality).

Notes on electromagnetic emissions

The operation of the equipment is influenced by the following two conditions.

- ❖ This equipment does not cause harmful interference.
- ❖ Other disturbances that this equipment is bound to pick up, including those that may cause unintended operation.

Note

- ❖ To avoid electric shock, do not carry out any maintenance operations unless you are qualified to do so.
- ❖ Before connecting the unit to the mains, make sure that the mains voltage is appropriate for the unit.

Disposal of Electronic and Electrical Waste

According to the WEEE EU Directive, electronic and electrical waste must not be disposed of together with unsorted waste. Please contact your local recycling facility to dispose of this product.

Important Notice

This brochure is delivered in accordance with the following conditions and constraints.

- ❖ This manual contains information that is proprietary to China Starwin Science & Technology Co., Ltd. This information is provided solely to assist the correct authorized user of the corresponding China Starwin Science & Technology Co., Ltd.
- ❖ No part of its contents may be used for any other purpose; transmitted to any person or company or reproduced by any electronic or mechanical means without the express prior written permission of China Starwin Science & Technology Co., Ltd.
- ❖ Text and images are for illustration and reference only, specifications are subject to change without notice.
- ❖ The software described in this document is provided under a license. The software may only be used or copied in accordance with the terms of the license.
- ❖ The information in this document is subject to change without notice.
- ❖ Unless otherwise stated, company names, personal names and data used in the examples are fictitious.
- ❖ Ltd. reserves the right to change the specifications and descriptions of the equipment contained herein without notice. No part of this document shall be deemed to be part of any contract or warranty unless it is expressly incorporated by reference into such contract or warranty.
- ❖ The information contained herein is merely descriptive in nature and does not constitute an offer to sell the products described herein.
- ❖ Any alterations or modifications to the equipment, including opening the equipment without the express permission of China Starwin Science & Technology Co., Ltd. This may also render the user unable to operate the equipment.

- ❖ Some of the equipment specified in this manual is manufactured and warranted by a third party. All such equipment must be installed and handled in full compliance with the instructions provided by the manufacturer accompanying this manual, or as subsequently provided by China Starwin Science & Technology Co., Ltd.
- ❖ Failure to follow these instructions may result in serious damage, personal injury, rendering the user unable to operate the equipment and voiding the warranty provided by such manufacturer.

Instructions

The use of this terminal requires a clear view of the sky above to maximise the reception and transmission of the signal. Other factors such as satellite coverage areas and weather also have an impact on signal quality. You must be within the coverage area of the satellite in order to transmit and receive signals properly. When you use it outside the satellite coverage area, the signal will be weak or lost.

The terminal needs a clear line of sight pointing in the direction of the satellite for uninterrupted signal reception and transmission. Objects such as buildings, mountains, bridges, tunnels and trees that obstruct this view can cause signal loss. However, once the antenna has a clear line of sight again, the signal is quickly restored. Adverse weather conditions may also interfere with signal reception and transmission. Stray signals from radio or TV broadcast towers may also affect the satellite signal.

If necessary, clean the radome with a clean soft cloth. Some aftermarket water repellents can also be used to help reduce the accumulation of rain and dew on the terminal Water.

Appendix 2 Technical Service Contact Information

China Starwin Science & Technology Co., Ltd.

Address: 3/F, Block B, Imicon Technology Park, No.2 South Keyuan Road, High-tech Zone, Chengdu, China
Tel: +86-028- 85039978

<http://www.xuny-sat.com>

E-mail: xywt@xuny-sat.com