



2022

深圳祥博一科技有限公司

Shenzhen Xiangboyi Technology Co. Ltd

天线测试报告 Antenna report



TEST REPORT

01 客户名称/Customer : 晨诚兴

02 项目名称/Project : M32

03 立项编号/Project NO : XBY220427

04 工程师/Engineer : 杨小文
电话/Phone : 15820795642

PART 1

测试报告版本/Report version

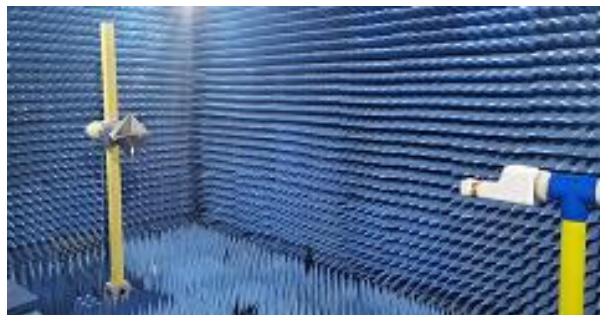
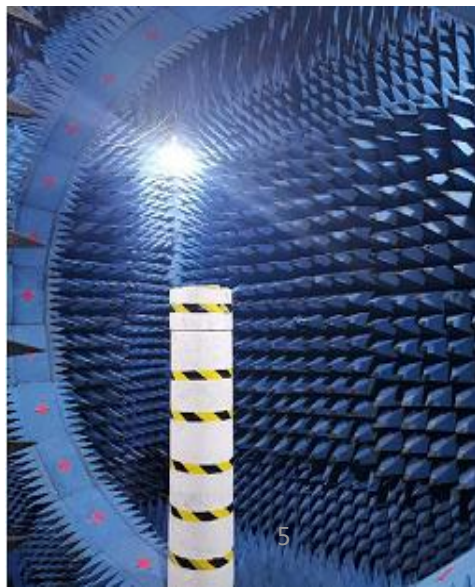
| 日期 Date | 天线版本 Antenna version | 主板版本 PCB version | 变更描述 Description of Change |
|------------|----------------------------|---------------------|-------------------------------|
| 2022-9-14 | | | 客供天线测试数据 |
| | | | |
| | | | |
| | | | |
| | | | |

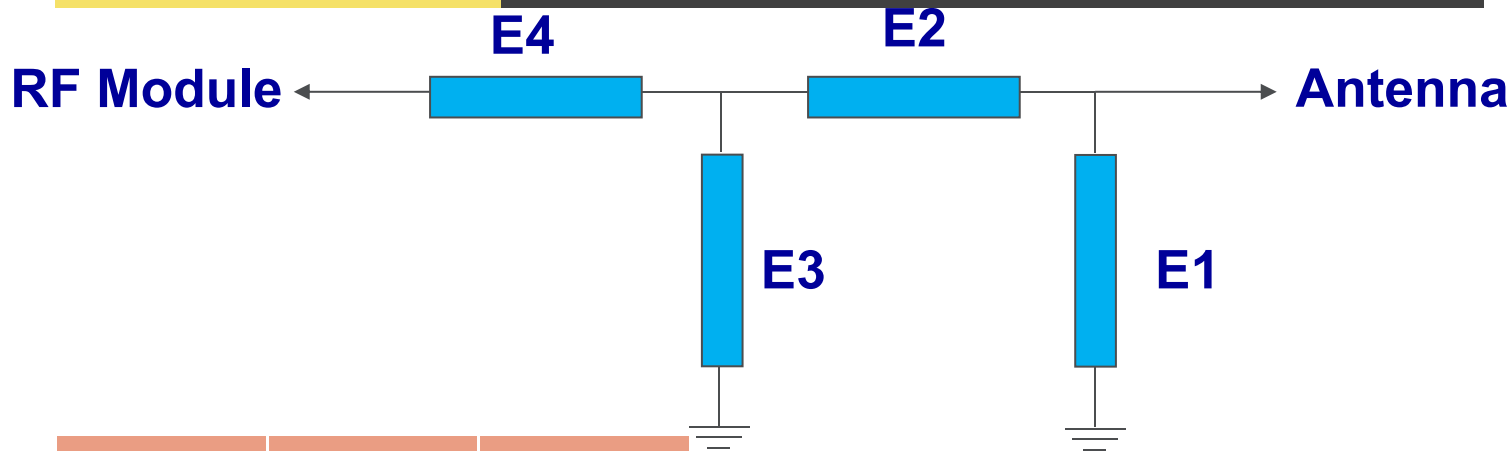
| NO | ITEMS | DETAILS |
|----|---|------------------|
| 1 | 工作频段 Operating band | BT |
| 2 | 频率范围 Frequency band | BT: 2400-2500Mhz |
| 3 | 天线类型 Antenna type | MAIN: monopole |
| 4 | 天线材质及实现形状 Material and implementation shape | 导线 |

PART 3

Test system and equipment

| | 测试项目/Test items | 设备/equipment |
|--|--|---|
| 1 : S参数 S parameter | 1. 回波损耗 Return loss 2. 驻波比 VSWR | 网络分析仪/Network analyzer: A338/A333 |
| 2 : 耦合功率测试 Active test | 1. 发射功率 Transmitting power 2. 接收灵敏度 Receiving sensitivity | 综合测试仪/Comprehensive test instrument: Agilent 8960/ CMW500 |
| 3 : 辐射模式与增益 Radiation mode and gain | 1. 辐射模式 Radiation mode 2. 天线增益 Gain | 1. 暗室/Shielding room : 7x4x3 m (ETS-3D) 2. 网络分析仪/Network analyzer : HP 8753D |





| Element | Value | Vender |
|-----------|-------|--------|
| E1 (0402) | NA | |
| E2 (0402) | 0 Ohm | |
| E3 (0402) | NA | |
| E4 (0402) | 0 Ohm | |

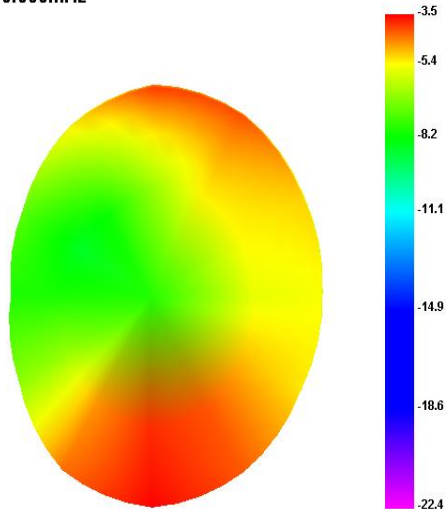
没有改动匹配电路。

| 天线1 BT天线效率, 增益 | | |
|----------------|-------------|---------------|
| Freq (MHz) | Effi (%) | Gain (dBi) |
| 2400 | 15.02 | -3.53 |
| 2450 | 13.69 | -4.51 |
| 2500 | 12.85 | -3.9 |

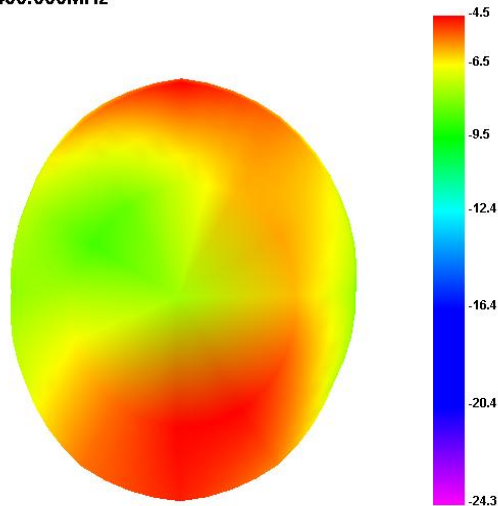
| 天线2 BT天线效率, 增益 | | |
|----------------|-------------|---------------|
| Freq (MHz) | Effi (%) | Gain (dBi) |
| 2400 | 12.21 | -4.94 |
| 2450 | 12.31 | -5.14 |
| 2500 | 10.49 | -5.73 |

天线1辐射方向图

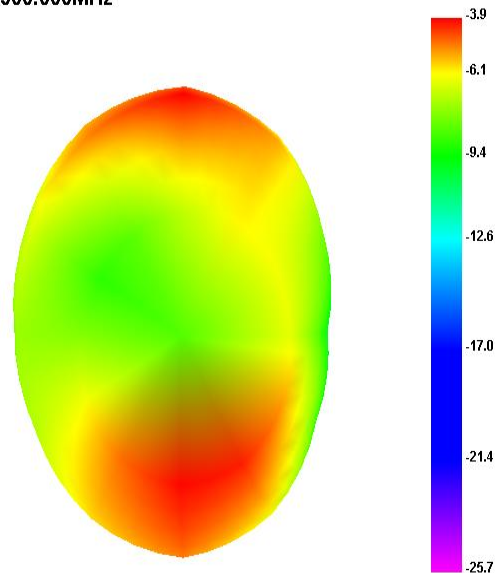
2400.000MHz



2450.000MHz



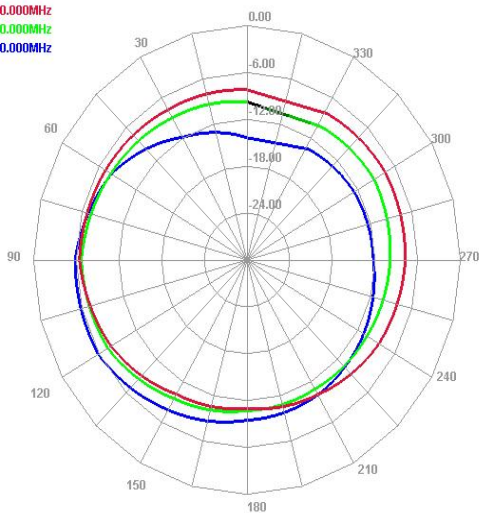
2500.000MHz



天线1辐射方向图

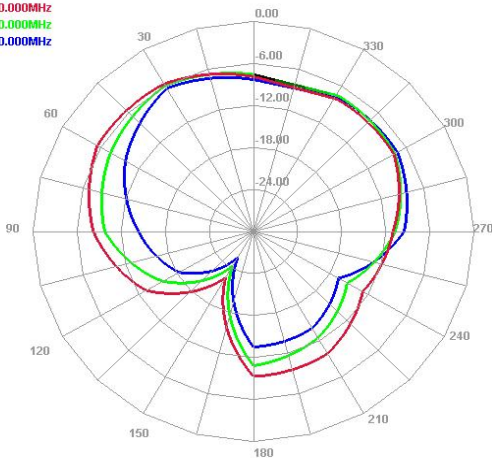
Horizontal

2400.000MHz
2450.000MHz
2500.000MHz



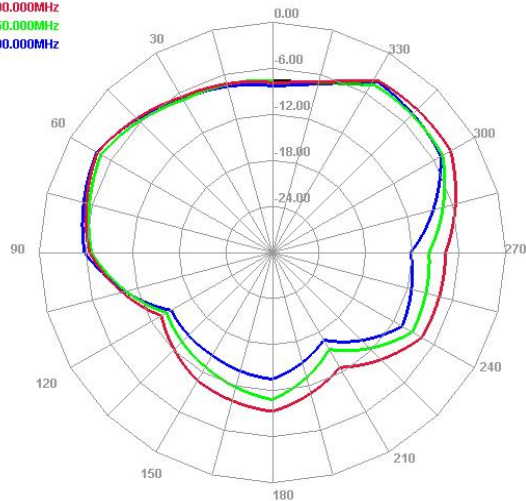
E1 Face

2400.000MHz
2450.000MHz
2500.000MHz

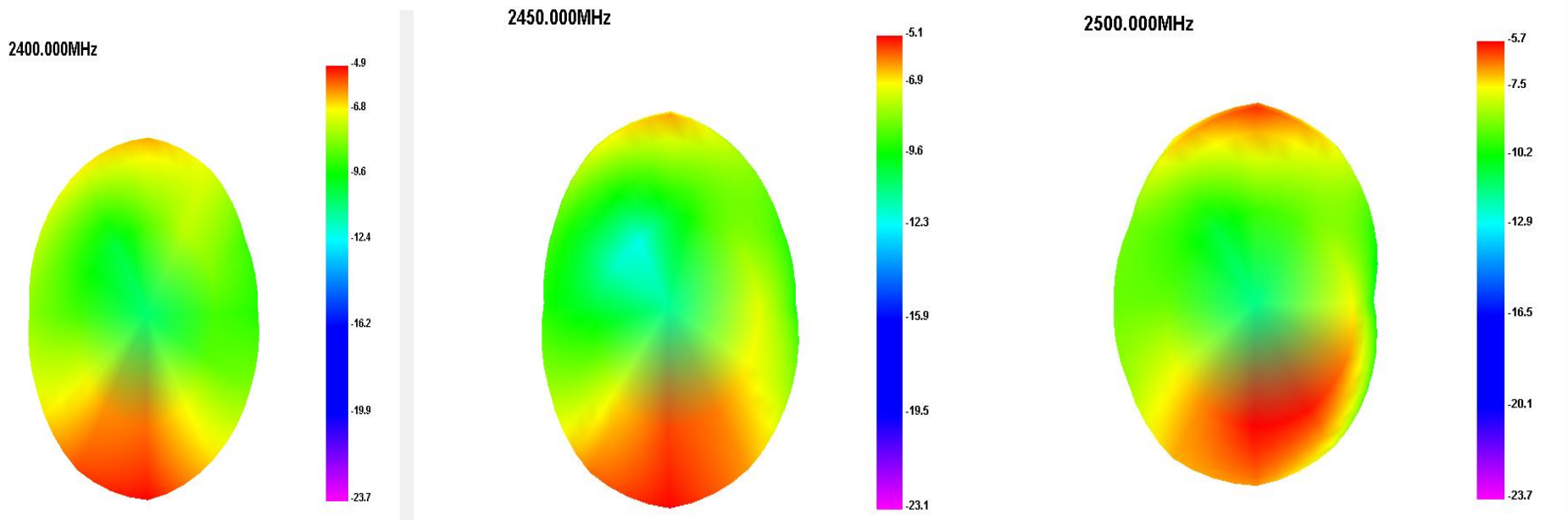


E2 Face

2400.000MHz
2450.000MHz
2500.000MHz

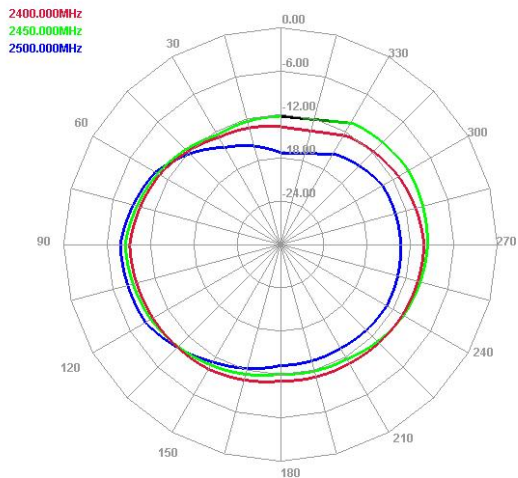


天线2辐射方向图

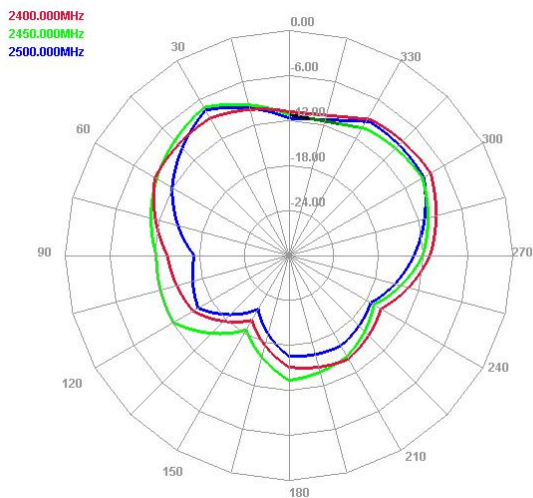


天线2辐射方向图

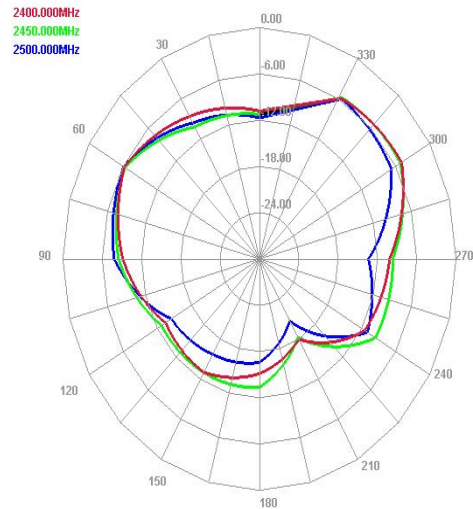
Horizontal



E1 Face



E2 Face



PART 7

组装方式/Assembly method



ANT 1&2
Length: 30mm \pm 5mm

PART 8

整机图片

Picture of complete machine





2022 Thanks!

Your content to play here, or through your copy, paste in this box, and select only the text. Your content to play here, or through your copy, paste in this box, and select only the text.