

System Check_H2450

DUT: Dipole 2450 MHz; Type:D2450V2; SN:927

Communication System: CW; Frequency: 2450 MHz;Duty Cycle: 1:1

Medium: H2450 Medium parameters used: $f = 2450$ MHz; $\sigma = 1.79$ S/m; $\epsilon_r = 40.105$; $\rho = 1000$ kg/m³

Ambient Temperature : 22.1 °C; Liquid Temperature : 21.9 °C

DASY5 Configuration:

- Probe: EX3DV4 - SN3970; ConvF(8.06, 8.06, 8.06); Calibrated: 2022/4/18;
- Sensor-Surface: 2mm (Mechanical Surface Detection)
- Electronics: DAE4 Sn1418; Calibrated: 2022/3/24
- Phantom: ELI v5.0; Type: QDOVA002AA; Serial: TP:1231
- Measurement SW: DASY52, Version 52.8 (7); SEMCAD X Version 14.6.10 (7164)

Pin=250mW/Area Scan (41x51x1): Interpolated grid: dx=2.000 mm, dy=2.000 mm

Maximum value of SAR (interpolated) = 25.4 W/kg

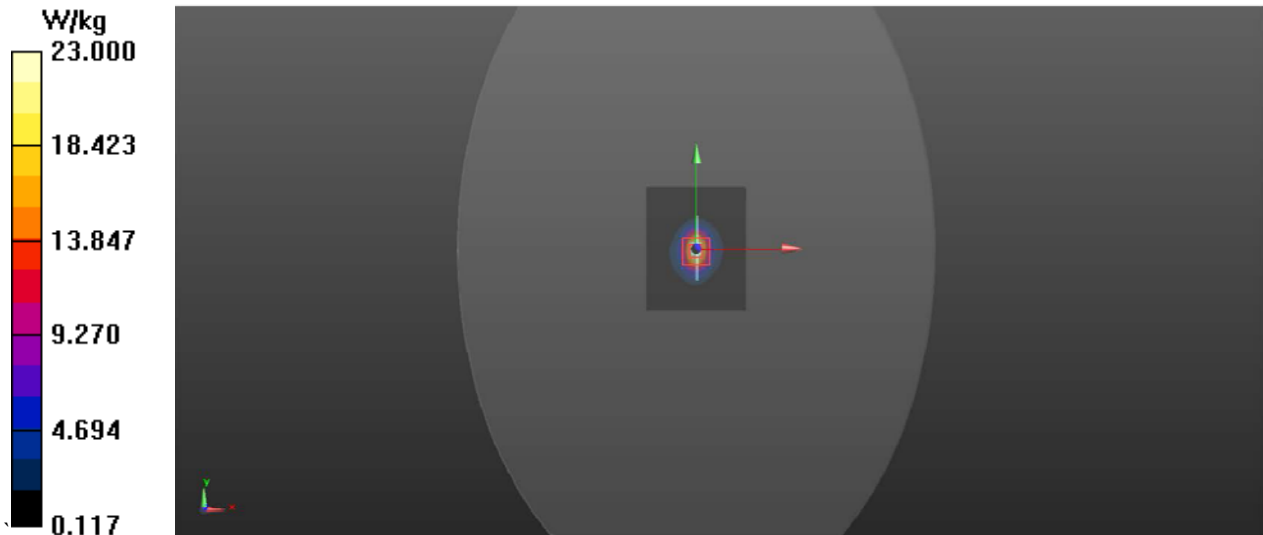
Pin=250mW/Zoom Scan (5x5x7)/Cube 0: Measurement grid: dx=5mm, dy=5mm, dz=5mm

Reference Value = 114.7 V/m; Power Drift = 0.10 dB

Peak SAR (extrapolated) = 30.4 W/kg

SAR(1 g) = 13.0 W/kg; SAR(10 g) = 6.08 W/kg

Maximum value of SAR (measured) = 23.0 W/kg



System Check_H5250

DUT: Dipole 5GHzV2;Type:D5GHzV2; SN:1169

Communication System: CW; Frequency: 5250 MHz;Duty Cycle: 1:1

Medium: H5G Medium parameters used: $f = 5250$ MHz; $\sigma = 4.748$ S/m; $\epsilon_r = 36.88$; $\rho = 1000$ kg/m³

Ambient Temperature : 22.5 °C; Liquid Temperature : 22.4 °C

DASY5 Configuration:

- Probe: EX3DV4 - SN3970; ConvF(5.85, 5.85, 5.85); Calibrated: 2022/4/18;
- Sensor-Surface: 1.4mm (Mechanical Surface Detection)
- Electronics: DAE4 Sn1418; Calibrated: 2022/3/24
- Phantom: ELI v5.0; Type: QDOVA002AA; Serial: TP:1231
- Measurement SW: DASY52, Version 52.8 (7); SEMCAD X Version 14.6.10 (7164)

Pin=100mW/Area Scan (7x9x1): Interpolated grid: dx=10.00 mm, dy=10.00 mm

Maximum value of SAR (interpolated) = 22.2 W/kg

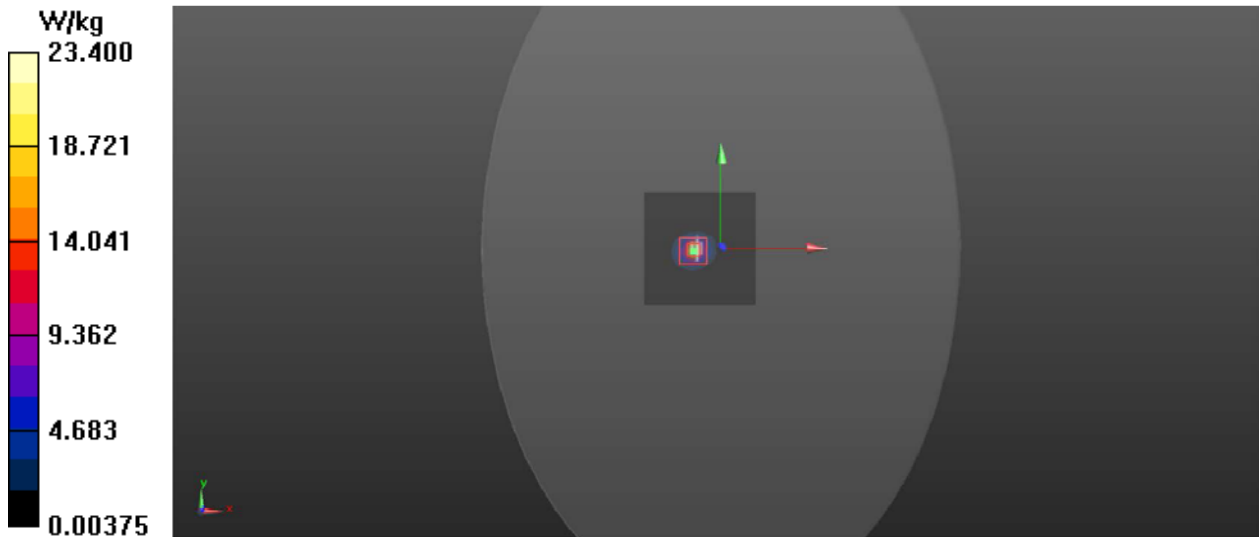
Pin=100mW/Zoom Scan (8x8x13)/Cube 0: Measurement grid: dx=4mm, dy=4mm, dz=2mm

Reference Value = 57.229 V/m; Power Drift = 0.15 dB

Peak SAR (extrapolated) = 37.6 W/kg

SAR(1 g) = 7.63 W/kg; SAR(10 g) = 2.15 W/kg

Maximum value of SAR (measured) = 23.4 W/kg



System Check_H5750

DUT: Dipole 5GHzV2;Type:D5GHzV2; SN:1169

Communication System: CW; Frequency: 5750 MHz;Duty Cycle: 1:1

Medium: H5G Medium parameters used: $f = 5750$ MHz; $\sigma = 5.415$ S/m; $\epsilon_r = 35.658$; $\rho = 1000$ kg/m³

Ambient Temperature : 22.6 °C; Liquid Temperature : 22.5 °C

DASY5 Configuration:

- Probe: EX3DV4 - SN3970; ConvF(5.2, 5.2, 5.2); Calibrated: 2022/4/18;
- Sensor-Surface: 1.4mm (Mechanical Surface Detection)
- Electronics: DAE4 Sn1418; Calibrated: 2022/3/24
- Phantom: ELI v5.0; Type: QDOVA002AA; Serial: TP:1231
- Measurement SW: DASY52, Version 52.8 (7); SEMCAD X Version 14.6.10 (7164)

Pin=100mW/Area Scan (7x9x1): Interpolated grid: dx=10.00 mm, dy=10.00 mm

Maximum value of SAR (interpolated) = 20.6 W/kg

Pin=100mW/Zoom Scan (8x8x13)/Cube 0: Measurement grid: dx=4mm, dy=4mm, dz=2mm

Reference Value = 50.784 V/m; Power Drift = 0.05 dB

Peak SAR (extrapolated) = 35.0 W/kg

SAR(1 g) = 7.53 W/kg; SAR(10 g) = 2.12 W/kg

Maximum value of SAR (measured) = 21.5 W/kg

