




# SAR TEST REPORT

|  |   |   |
|--|---|---|
| <b>FCC ID</b> ..... :                          | 2AUARTK689BT  |   |
| <b>Test Report No</b> ..... :                  | TCT240712E041   |   |
| <b>Date of issue</b> ..... :                   | Jul. 29, 2024   |   |
| <b>Testing laboratory</b> .....                | SHENZHEN TONGCE TESTING LAB   |   |
| <b>Testing location/ address:</b>              | 2101 & 2201, Zhenchang Factory Renshan Industrial Zone, Fuhai Subdistrict, Bao'an District, Shenzhen, Guangdong, 518103, People's Republic of China |   |
| <b>Applicant's name</b> ..... :                | THINKCAR TECH CO., LTD.   |   |
| <b>Address</b> ..... :                         | 2606, building 4, phase II, TiananYungu, Gangtou community, Bantian, Longgang District, Shenzhen, China   |   |
| <b>Manufacturer's name</b> ... :               | THINKCAR TECH CO., LTD.   |   |
| <b>Address</b> ..... :                         | 2606, building 4, phase II, TiananYungu, Gangtou community, Bantian, Longgang District, Shenzhen, China   |   |
| <b>Product Name</b> ..... :                    | Automotive Diagnostic Tool  |   |
| <b>Trade Mark</b> .....                        | THINKCAR, XHINKCAR, MUCAR   |   |
| <b>Model/Type reference</b> ..... :            | TK689BT   |   |
| <b>SAR Max. Values</b> .....:                  | <b>0.34 W/Kg (1g) for Body-worn</b>   |   |
| <b>Simultaneous Reported SAR</b> .....:        | <b>0.49 W/Kg (1g) for Body-worn</b>   |   |
| <b>Date of receipt of test item</b> .....      | Jul. 12, 2024   |   |
| <b>Date (s) of performance of test</b> ..... : | Jul. 12, 2024- Jul. 29, 2024  |   |
| <b>Tested by (+signature)</b> ... :            | Karl WANG   |  |
| <b>Check by (+signature)</b> .... :            | Beryl Zhao  |  |
| <b>Approved by (+signature)</b> :              | Tomsin  |  |



**General disclaimer:**

This report shall not be reproduced except in full, without the written approval of SHENZHEN TONGCE TESTING LAB. This document may be altered or revised by SHENZHEN TONGCE TESTING LAB personnel only, and shall be noted in the revision section of the document. The test results in the report only apply to the tested sample.

TABLE OF CONTENTS

|   |           |
|---|-----------|
| <b>1. General Product Information .....</b>                           | <b>4</b>  |
| 1.1. EUT description .....  | 4         |
| 1.2. Model(s) list .....  | 4         |
| <b>2. Test standard .....</b>   | <b>5</b>  |
| <b>3. Facilities and Accreditations .....</b>                         | <b>5</b>  |
| 3.1. Facilities .....   | 5         |
| 3.2. Location.....  | 5         |
| <b>4. Test Result Summary .....</b>                                   | <b>6</b>  |
| <b>5. RF Exposure Limit .....</b>                                     | <b>7</b>  |
| <b>6. SAR Measurement System Configuration .....</b>                  | <b>8</b>  |
| 6.1. SAR Measurement Set-up .....                                     | 8         |
| 6.2. E-field Probe .....  | 9         |
| 6.3. Phantom .....  | 9         |
| 6.4. Device Holder .....  | 10        |
| 6.5. Data Storage and Evaluation .....                                | 11        |
| 6.6. Position of the wireless device in relation to the phantom ..... | 12        |
| 6.7. Tissue Dielectric Parameters .....                               | 15        |
| 6.8. Tissue-equivalent Liquid Properties .....                        | 16        |
| 6.9. System Check.....  | 17        |
| <b>7. Measurement Procedure .....</b>                                 | <b>18</b> |
| <b>8. Conducted Output Power.....</b>                                 | <b>21</b> |
| <b>9. Exposure Position Consideration .....</b>                       | <b>23</b> |
| 9.1. EUT Antenna Location.....  | 23        |
| 9.2. Test Position Consideration .....                                | 23        |
| <b>10. SAR Test Results Summary.....</b>                              | <b>24</b> |
| 10.1. Body-Worn 1g SAR Data .....                                     | 24        |
| 10.2. Simultaneous Transmission Conclusion.....                       | 25        |
| 10.3. SAR Simultaneous Transmission Analysis.....                     | 26        |
| 10.4. Measurement Uncertainty (450MHz-3GHz).....                      | 27        |
| 10.5. Test Equipment List .....                                       | 29        |
| <b>11. System Check Results .....</b>                                 | <b>30</b> |
| <b>12. SAR Test Data.....</b>   | <b>32</b> |
| <b>Appendix A: EUT Photos .....</b>                                   | <b>36</b> |
| <b>Appendix B: Test Setup Photos .....</b>                            | <b>38</b> |

**Appendix C: Probe Calibration Certificate..... 39**  
**Appendix D: Dipole Calibration Report..... 57**  
**Appendix E: SAR SYSTEM VALIDATION ..... 68**  
**Appendix F: The Check Data of Impedance and Return Loss..... 69**

## 1. General Product Information

### 1.1. EUT description

|                            |   |
|----------------------------|---|
| Product Name.....:         | Automotive Diagnostic Tool  |
| Model/Type reference.....: | TK689BT   |
| Sample Number.....:        | TCT240712E041-0101/01   |
| Rating(s).....:            | Rechargeable Li-ion Battery DC 3.8V   |
| <b>Wi-Fi 2.4G</b>          |   |
| Supported type.....:       | 802.11b/802.11g/802.11n   |
| Modulation Type.....:      | 802.11b: DSSS; 802.11g/802.11n:OFDM   |
| Operation Frequency.....:  | 802.11b/802.11g/802.11n(HT20):2412MHz~2462MHz;<br>802.11n(HT40):2422MHz~2452MHz |
| Channel number.....:       | 802.11b/802.11g/802.11n(HT20):11; 802.11n(HT40):7                               |
| Channel separation.....:   | 5MHz  |
| <b>Bluetooth</b>           |   |
| Bluetooth Version.....:    | Supported 5.1   |
| Modulation.....:           | GFSK(1Mbps) , $\pi/4$ -DQPSK(2Mbps) , 8-DPSK(3Mbps)                             |
| Operation Frequency.....:  | 2402MHz~2480MHz   |
| Channel number.....:       | 79/40   |
| Channel separation.....:   | 1MHz/2MHz   |

### 1.2. Model(s) list

None.

## 2. Test standard

The tests were performed according to following standards:

FCC 47 CFR §2.1093

IEC-IEEE 62209-1528-2020: Measurement procedure for the assessment of specific absorption rate of human exposure to radio frequency fields from hand-held and body-mounted wireless communication devices

KDB447498 D01:General RF Exposure Guidance v06

KDB865664 D01:SAR measurement 100MHz to 6GHz v01r04

KDB865664 D02:RF Exposure Reporting v01r02.

KDB248227 D01:802.11 wi-fi SAR v02r02

KDB941225 D07:UMPC Mini Tablet v01r02

KDB690783 D01:SAR Listings on Grant v01r03

## 3. Facilities and Accreditations

### 3.1. Facilities

The test facility is recognized, certified, or accredited by the following organizations:

- FCC - Registration No.: 645098

SHENZHEN TONGCE TESTING LAB

Designation Number: CN1205

The testing lab has been registered and fully described in a report with the (FCC) Federal Communications Commission. The acceptance letter from the FCC is maintained in our files.

- IC - Registration No.: 10668A-1

SHENZHEN TONGCE TESTING LAB

CAB identifier: CN0031

The testing lab has been registered by Certification and Engineering Bureau of Industry Canada for radio equipment testing.

### 3.2. Location

SHENZHEN TONGCE TESTING LAB.

Address: 2101 & 2201, Zhenchang Factory Renshan Industrial Zone, Fuhai Subdistrict, Bao'an District, Shenzhen, Guangdong, 518103, People's Republic of China

Environment Condition:

|                       |            |
|-----------------------|------------|
| Temperature:          | 18°C ~25°C |
| Humidity:             | 35%~75% RH |
| Atmospheric Pressure: | 1011 mbar  |

#### 4. Test Result Summary

The maximum results of Specific Absorption Rate (SAR) found during test as bellows:  
<Highest Reported standalone SAR Summary>

| Exposure Position                  | Frequency Band | Reported SAR (W/kg) | Equipment Class | Highest Reported SAR (W/kg) |
|------------------------------------|----------------|---------------------|-----------------|-----------------------------|
| Body-worn<br>1-g SAR<br>(0 mm Gap) | WLAN 2.4 GHz   | <b>0.34</b>         | DTS             | <b>0.34</b>                 |
|                                    | BT             | 0.15                | DSS             |                             |

<Highest Reported simultaneous SAR Summary>

| Exposure Position          | Frequency Band | Highest Reported Simultaneous Transmission SAR (W/kg) |
|----------------------------|----------------|---|
| Body<br>1-g SAR (0 mm Gap) | WIFI2.4G +BT   | <b>0.49</b>   |

**Note:**

1. The highest simultaneous transmission is scalar summation of Reported standalone SAR per FCC KDB 690783 D01 v01r03, and scalar SAR summation of all possible simultaneous transmission scenarios are < 1.6W/kg.
2. This device is compliance with Specific Absorption Rate (SAR) for general population/uncontrolled exposure limits specified in FCC 47 CFR part 2 (2.1093) and ANSI/IEEE C95.1-2005, and had been tested in accordance with the measurement methods and procedures specified in IEEE 1528-2013.

## 5. RF Exposure Limit

| Type Exposure   | SAR (W/kg)                  |
|---|-----------------------------|
|   | Uncontrolled Exposure Limit |
| Spatial Peak SAR (averaged over any 1 g of tissue)            | 1.60                        |
| Spatial Peak SAR (hands/wrists/feet/ankles averaged over 10g) | 4.00                        |
| Spatial Peak SAR (averaged over the whole body)               | 0.08                        |

**Note:**

1. The Spatial Peak value of the SAR averaged over any 1 gram of tissue (defined as a tissue volume in the shape of a cube) and over the appropriate averaging time.
2. The Spatial Average value of the SAR averaged over the whole body.
3. The Spatial Peak value of the SAR averaged over any 10 grams of tissue (defined as a tissue volume in the shape of a cube) and over the appropriate averaging time.

## 6. SAR Measurement System Configuration

### 6.1. SAR Measurement Set-up

The OPENSAR system for performing compliance tests consist of the following items:

A standard high precision 6-axis robot (KUKA) with controller and software.

KUKA Control Panel (KCP)

A dosimetric probe, i.e., an isotropic E-field probe optimized and calibrated for usage in tissue simulating liquid. The probe is equipped with a Video Positioning System (VPS).

The stress sensor is composed with mechanical and electronic when the electronic part detects a change on the electro-mechanical switch; it sends an "Emergency signal" to the robot controller that to stop robot's moves A computer operating Windows XP.

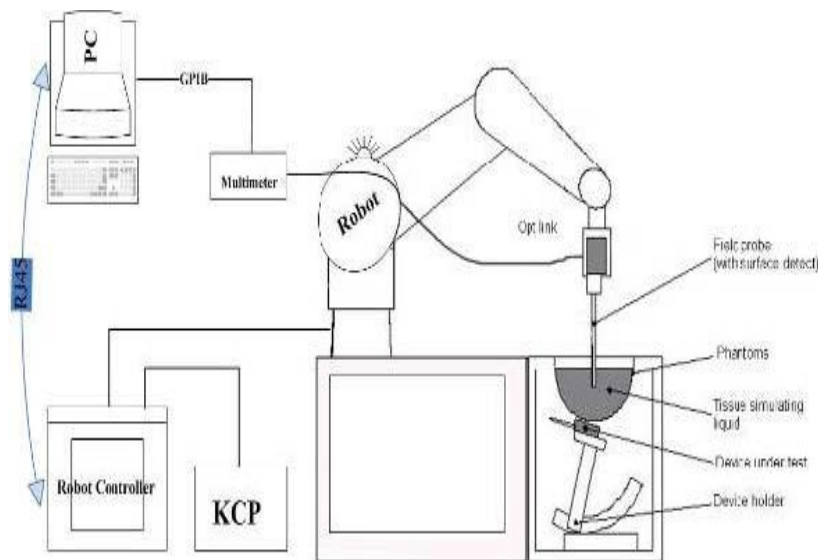
OPENSAR software Remote control with teaches pendant and additional circuitry for robot safety such as warning lamps, etc.

The SAM phantom enabling testing left-hand right-hand and body usage.

The Position device for handheld EUT

Tissue simulating liquid mixed according to the given recipes.

System validation dipoles to validate the proper functioning of the system.



**KUKA SAR Test System Configuration**



## 6.2. E-field Probe

The SAR measurement is conducted with the dosimetric probe (manufactured by MVG). The probe is specially designed and calibrated for use in liquid with high permittivity. The dosimetric probe has special calibration in liquid at different frequency. This probe has a built in optical surface detection system to prevent from collision with phantom.

### Probe Specification

Construction Symmetrical design with triangular core  
Interleaved sensors  
Built-in shielding against static charges  
PEEK enclosure material (resistant to organic solvents, e.g., DGBE)  
Calibration ISO/IEC 17025 calibration service available.

|  |   |
|--|---|
| Device Type                              | COMOSAR DOSIMETRIC E FIELD PROBE                                  |
| Manufacturer                             | MVG   |
| Model                                    | SSE2  |
| Serial Number                            | SN 25/22 EPGO375  |
| Frequency Range of Probe                 | 0.15 GHz-6GHz   |
| Resistance of Three Dipoles at Connector | Dipole 1:R1=0.197MΩ<br>Dipole 2:R3=0.230MΩ<br>Dipole 3:R3=0.208MΩ |



Photo of E-Field Probe

## 6.3. Phantom

The SAM Phantom SAM120 is constructed of a fiberglass shell integrated in a wooden table. The shape of the shell is in compliance with the specification set in IEEE P1528 and CENELEC IEC-IEEE 62209-1528-2020.

The phantom enables the dosimetric evaluation of left and right hand phone usage as well as body mounted usage at the flat phantom region.

A cover prevents the evaporation of the liquid.

Reference markings on the Phantom allow the complete setup of all predefined phantom positions and measurement grids by manually teaching three points in the robot

System checking was performed using the flat section, whilst Head SAR tests used the left and right head profile sections.

Body SAR testing also used the flat section between the head profiles.

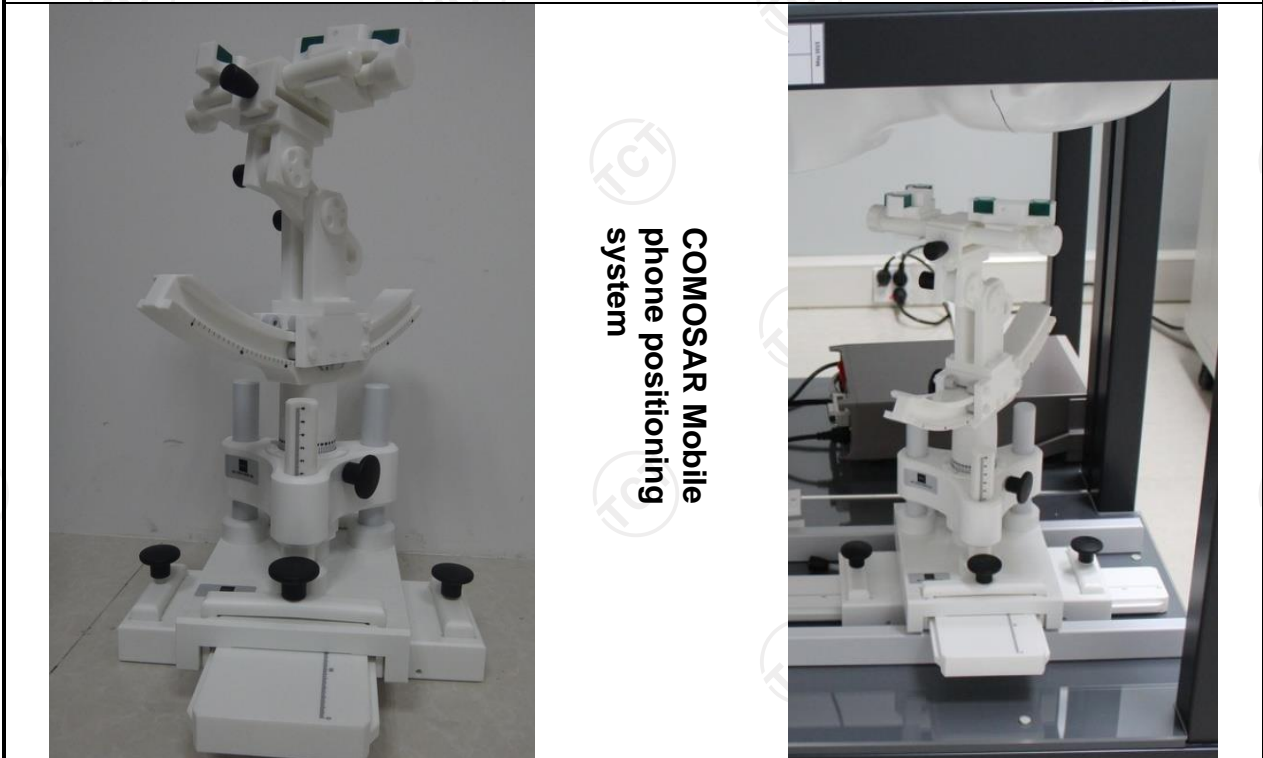
Name: COMOSAR IEEE SAM PHANTOM  
S/N: SN 19/15 SAM 120  
Manufacture: MVG



SAM Twin Phantom

#### 6.4. Device Holder

In combination with the Generic Twin Phantom SAM120, the Mounting Device enables the rotation of the mounted transmitter in spherical coordinates whereby the rotation points is the ear opening. The devices can be easily, accurately, and repeatedly positioned according to the FCC and CENELEC specifications. The device holder can be locked at different phantom locations (left head, right head, flat phantom).



COMOSAR Mobile  
phone positioning  
system

## 6.5. Data Storage and Evaluation

### Data Storage

The OPENSAR software stores the acquired data from the data acquisition electronics as raw data (in microvolt readings from the probe sensors), together with all necessary software parameters for the data evaluation (probe calibration data, liquid parameters and device frequency and modulation data) in measurement files. The software evaluates the desired unit and format for output each time the data is visualized or exported. This allows verification of the complete software setup even after the measurement and allows correction of incorrect parameter settings. For example, if a measurement has been performed with a wrong crest factor parameter in the device setup, the parameter can be corrected afterwards and the data can be re-evaluated.

The measured data can be visualized or exported in different units or formats, depending on the selected probe type ([V/m], [A/m], [°C], [mW/g], [mW/cm<sup>2</sup>], [dBrel], etc.). Some of these units are not available in certain situations or show meaningless results, e.g., a SAR output in a lossless media will always be zero. Raw data can also be exported to perform the evaluation with other software packages.

### Data Evaluation

The OPENSAR software automatically executes the following procedures to calculate the field units from the microvolt readings at the probe connector. The parameters used in the evaluation are stored in the configuration modules of the software:

|                    |                           |                      |
|--------------------|---------------------------|----------------------|
| Probe parameters:  | - Sensitivity             | Normi, ai0, ai1, ai2 |
|                    | - Conversion factor       | ConvFi               |
|                    | - Diode compression point | Dcpi                 |
| Device parameters: | - Frequency               | f                    |
|                    | - Crest factor            | cf                   |
| Media parameters:  | - Conductivity            | σ                    |
|                    | - Density                 | ρ                    |

These parameters must be set correctly in the software. They can be found in the component documents or they can be imported into the software from the configuration files issued for the OPENSAR components. In the direct measuring mode of the millimeter option, the parameters of the actual system setup are used. In the scan visualization and export modes, the parameters stored in the corresponding document files are used.

The first step of the evaluation is a linearization of the filtered input signal to account for the compression characteristics of the detector diode. The compensation depends on the input signal, the diode type and the DC-transmission factor from the diode to the evaluation electronics. If the exciting field is pulsed, the crest factor of the signal must be known to correctly compensate for peak power. The formula for each channel can be given as:

$$V_i = U_i + U_i^2 \cdot c f / d c p_i$$

|      |       |                                   |                 |
|------|-------|-----------------------------------|-----------------|
| With | $V_i$ | = compensated signal of channel i | (i = x, y, z)   |
|      | $U_i$ | = input signal of channel i       | (i = x, y, z)   |
|      | cf    | = crest factor of exciting field  | (MVG parameter) |
|      | dcpi  | = diode compression point         | (MVG parameter) |

From the compensated input signals the primary field data for each channel can be evaluated:

$$\text{E-field probes: } E_i = (V_i / \text{Normi} \cdot \text{ConvF})^{1/2}$$

$$\text{H-field probes: } H_i = (V_i)^{1/2} \cdot (ai_0 + ai_1 f + ai_2 f^2) / f$$

|      |       |   |               |
|------|-------|---|---------------|
| With | $V_i$ | = compensated signal of channel i               | (i = x, y, z) |
|      | Normi | = sensor sensitivity of channel i               | (i = x, y, z) |
|      |       | [mV/(V/m) <sup>2</sup> ] for E-field Probes     |               |
|      | ConvF | = sensitivity enhancement in solution           |               |
|      | aij   | = sensor sensitivity factors for H-field probes |               |
|      | f     | = carrier frequency [GHz]                       |               |
|      | $E_i$ | = electric field strength of channel i in V/m   |               |
|      | $H_i$ | = magnetic field strength of channel i in A/m   |               |

The RSS value of the field components gives the total field strength (Hermitian magnitude):

$$E_{tot} = (E_x^2 + E_y^2 + E_z^2)^{1/2}$$

The primary field data are used to calculate the derived field units.

$$SAR = (E_{tot})^2 \cdot \sigma / (\rho \cdot 1000)$$

- with SAR = local specific absorption rate in mW/g
- E<sub>tot</sub> = total field strength in V/m
- σ = conductivity in [mho/m] or [Siemens/m]
- ρ = equivalent tissue density in g/cm<sup>3</sup>

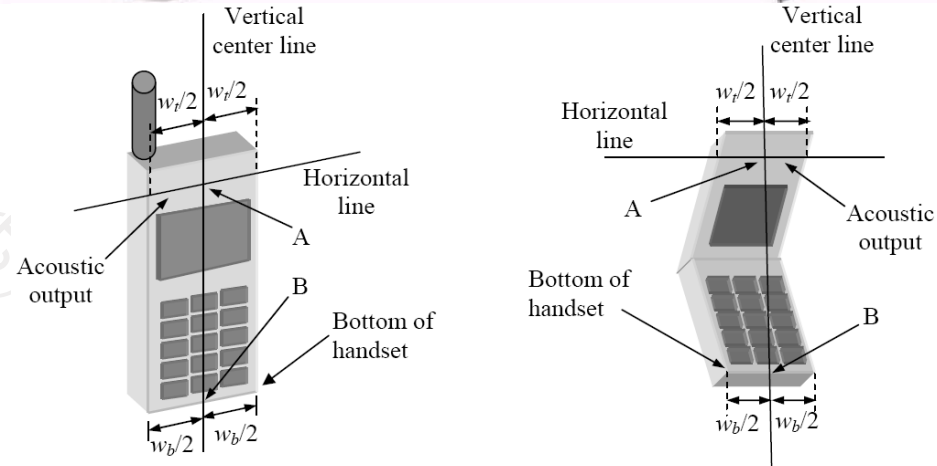
Note that the density is normally set to 1 (or 1.06), to account for actual brain density rather than the density of the simulation liquid. The power flow density is calculated assuming the excitation field to be a free space field.

### 6.6. Position of the wireless device in relation to the phantom

#### Handset Reference Points

$$P_{pwe} = E_{tot}^2 / 3770 \text{ or } P_{pwe} = H_{tot}^2 \cdot 37.7$$

- With P<sub>pwe</sub> = equivalent power density of a plane wave in mW/cm<sup>2</sup>
- E<sub>tot</sub> = total electric field strength in V/m
- H<sub>tot</sub> = total magnetic field strength in A/m

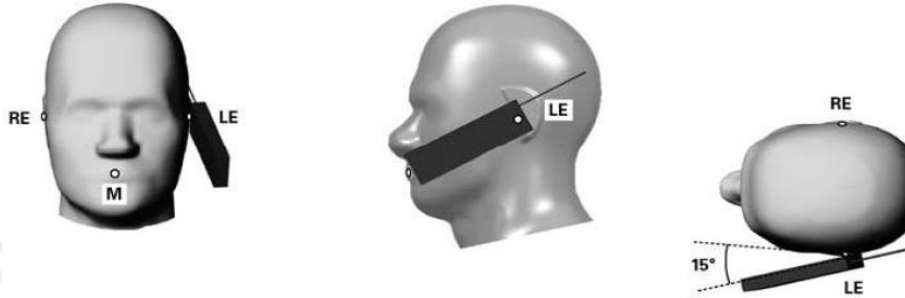


- W<sub>t</sub> Width of the handset at the level of the acoustic
- W<sub>b</sub> Width of the bottom of the handset
- A Midpoint of the width w<sub>t</sub> of the handset at the level of the acoustic output
- B Midpoint of the width w<sub>b</sub> of the bottom of the handset

#### Positioning for Cheek / Touch



**Positioning for Ear / 15° Tilt**

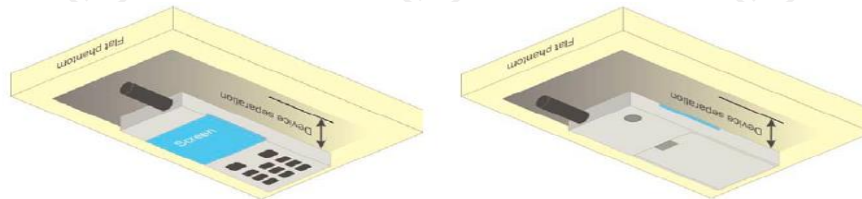


**Body Worn Accessory Configurations**

To position the device parallel to the phantom surface with either keypad up or down.

To adjust the device parallel to the flat phantom.

To adjust the distance between the device surface and the flat phantom to 15mm or holster surface and the flat phantom to 0 mm.



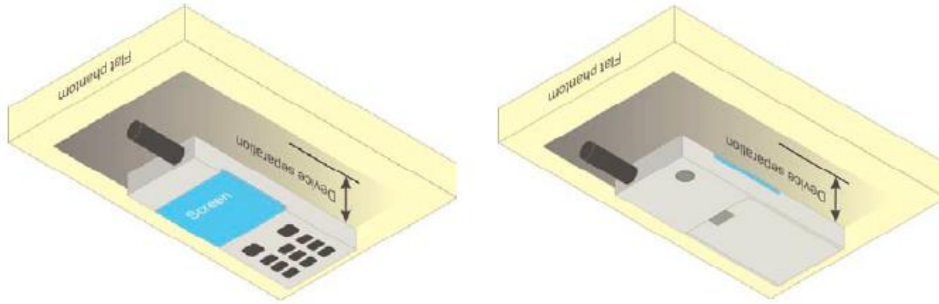
**Illustration for Body Worn Position**

**Wireless Router (Hotspot) Configurations**

Some battery-operated handsets have the capability to transmit and receive internet connectivity through simultaneous transmission of WIFI in conjunction with a separate licensed transmitter. The FCC has provided guidance in KDB Publication 941225 D06 where SAR test considerations for handsets ( $L \times W \geq$

9 cm x 5 cm) are based on a composite test separation distance of 10 mm from the front, back and edges of the device with antennas 2.5 cm or closer to the edge of the device, determined from general mixed use conditions for this type of devices. Since the hotspot SAR results may overlap with the body-worn accessory SAR requirements, the more conservative configurations can be considered, thus excluding some body-worn accessory SAR tests.

When the user enables the personal wireless router functions for the handset, actual operations include simultaneous transmission of both the WIFI transmitter and another licensed transmitter. Both transmitters often do not transmit at the same transmitting frequency and thus cannot be evaluated for SAR under actual use conditions. Therefore, SAR must be evaluated for each frequency transmission and mode separately and summed with the WIFI transmitter according to KDB 648474 publication procedures. The "Portable Hotspot" feature on the handset was NOT activated, to ensure the SAR measurements were evaluated for a single transmission frequency RF signal.

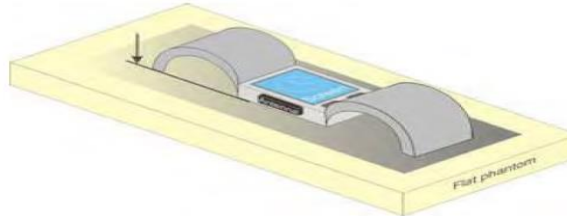


**Illustration for Hotspot Position**

**Limb-worn device**

A limb-worn device is a unit whose intended use includes being strapped to the arm or leg of the user while transmitting (except in idle mode). It is similar to a body-worn device. Therefore, the test positions of 6.1.4.4 also apply. The strap shall be opened so that it is divided into two parts as shown in Figure 9. The device shall be positioned directly against the phantom surface with the strap straightened as much as possible and the back of the device towards the phantom.

If the strap cannot normally be opened to allow placing in direct contact with the phantom surface, it may be necessary to break the strap of the device but ensuring to not damage the antenna.



**Test position for limb-worn devices**

## 6.7. Tissue Dielectric Parameters

The liquid used for the frequency range of 100MHz-6G consisted of water, sugar, salt and Cellulose. The liquid has been previously proven to be suited for worst-case. The following Table shows the detail solution. It's satisfying the latest tissue dielectric parameters requirements proposed by the IEEE 1528 and IEC 62209. The simulating liquids should be checked at the beginning of a series of SAR measurements to determine of the determine of the dielectric parameter are within the tolerances of the specified target values. The measured conductivity and relative permittivity should be within  $\pm 5\%$  of the target values.

The following materials are used for producing the tissue-equivalent materials

Targets for tissue simulating liquid

| Frequency (MHz) | Liquid Type | Liquid Type ( $\sigma$ ) | $\pm 5\%$ Range | Permittivity ( $\epsilon$ ) | $\pm 5\%$ Range |
|-----------------|-------------|--------------------------|-----------------|-----------------------------|-----------------|
| 300             | Head        | 0.87                     | 0.83~0.91       | 45.3                        | 43.04~47.57     |
| 450             | Head        | 0.87                     | 0.83~0.91       | 43.5                        | 41.33~45.68     |
| 835             | Head        | 0.90                     | 0.86~0.95       | 41.5                        | 39.43~43.58     |
| 900             | Head        | 0.97                     | 0.92~1.02       | 41.                         | 39.43~43.58     |
| 1800-2000       | Head        | 1.40                     | 1.33~1.47       | 40.0                        | 38.00~42.00     |
| 2450            | Head        | 1.80                     | 1.71~1.89       | 39.2                        | 37.24~41.16     |
| 2600            | Head        | 1.96                     | 1.86~2.06       | 39.0                        | 37.05~40.95     |
| 3000            | Head        | 2.40                     | 2.28~2.52       | 38.5                        | 36.58~40.43     |
| 5800            | Head        | 5.27                     | 5.01~5.53       | 35.3                        | 33.54~37.07     |

( $\epsilon$  = relative permittivity,  $\sigma$  = conductivity and  $\rho = 1000 \text{ kg/m}^3$ )

**6.8. Tissue-equivalent Liquid Properties**

| Test Date<br>dd/mm/yy | Temp<br>°C | Tissue<br>Type | Measured<br>Frequency<br>( MHz ) | $\epsilon_r$ | $\sigma$ (s/m) | Dev<br>$\epsilon_r$ (%) | Dev<br>$\sigma$ (%) |
|-----------------------|------------|----------------|----------------------------------|--------------|----------------|-------------------------|---------------------|
| 07/17/2024            | 22°C       | 2450H          | 2410                             | 37.84        | 1.79           | -3.47                   | -0.56               |
|                       |            |                | 2435                             | 37.85        | 1.81           | -3.44                   | 0.56                |
|                       |            |                | 2450                             | 37.82        | 1.83           | -3.52                   | 1.67                |
|                       |            |                | 2460                             | 37.80        | 1.84           | -3.57                   | 2.22                |

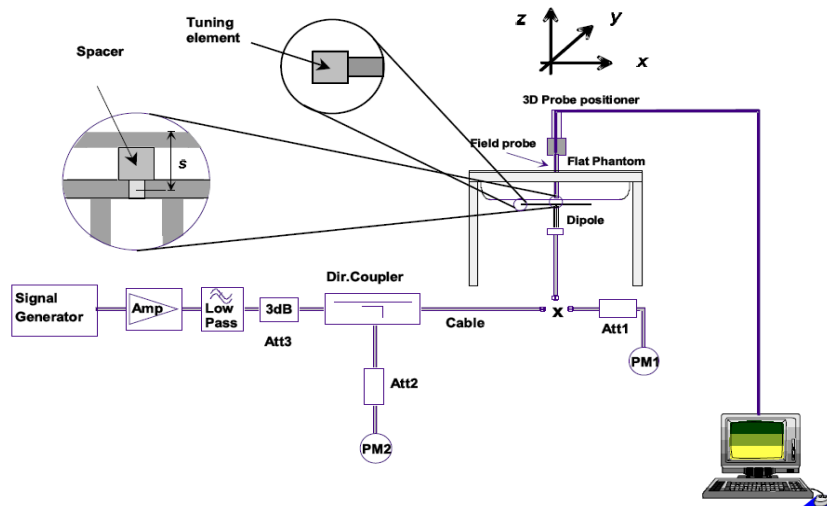


### 6.9. System Check

The SAR system must be validated against its performance specifications before it is deployed. When SAR probe and system component or software are changed, upgraded or recalibrated, these must be validated with the SAR system(s) that operates with such component. Reference dipoles are used with the required tissue-equivalent media for system validation.

System check results have to be equal or near the values determined during dipole calibration with the relevant liquids and test system ( $\pm 10\%$ ).

System check is performed regularly on all frequency bands where tests are performed with the OPENSAR system.



**System Check Set-up**

**Verification Results**

| Freq. (MHz) | Liquid Type | Measured Value in 100mW (W/kg) |              | Normalized to 1W (W/kg) |              | Target Value (W/kg) |              | Deviation (%) |              |
|-------------|-------------|--------------------------------|--------------|-------------------------|--------------|---------------------|--------------|---------------|--------------|
|             |             | 1 g Average                    | 10 g Average | 1 g Average             | 10 g Average | 1 g Average         | 10 g Average | 1 g Average   | 10 g Average |
| 2450        | Head        | 4.99                           | 2.36         | 49.90                   | 23.60        | 53.26               | 24.15        | -6.31         | -2.28        |

Comparing to the original SAR value provided by MVG, the verification data should be within its specification of 10%. Below table shows the target SAR and measured SAR after normalized to 1W input power. The table as below indicates the system performance check can meet the variation criterion and the plots can be referred to Section 10 of this report.

## 7. Measurement Procedure

### Conducted power measurement

For WWAN power measurement, use base station simulator to configure EUT WWAN transition in conducted connection with RF cable, at maximum power in each supported wireless interface and frequency band.

Read the WWAN RF power level from the base station simulator.

For WLAN/BT power measurement, use engineering software to configure EUT WLAN/BT continuously transmission, at maximum RF power in each supported wireless interface and frequency band.

Connect EUT RF port through RF cable to the power meter or spectrum analyser, and measure WLAN/BT output power.

### Conducted power measurement

Use base station simulator to configure EUT WWAN transmission in radiated connection, and engineering software to configure EUT WLAN/BT continuously transmission, at maximum RF power, in the highest power channel.

Place the EUT in positions as Appendix B demonstrates.

Set scan area, grid size and other setting on the MVG software.

Measure SAR results for the highest power channel on each testing position.

Find out the largest SAR result on these testing positions of each band.

Measure SAR results for other channels in worst SAR testing position if the Reported SAR or highest power channel is larger than 0.8 W/kg.

According to the test standard, the recommended procedure for assessing the peak spatial-average SAR value consists of the following steps:

Power reference measurement

Area scan

Zoom scan

Power drift measurement

### Spatial Peak SAR Evaluation

The procedure for spatial peak SAR evaluation has been implemented according to the test standard. It can be conducted for 1g and 10g, as well as for user-specific masses. The MVG software includes all numerical procedures necessary to evaluate the spatial peak SAR value.

The base for the evaluation is a “cube” measurement. The measured volume must include the 1g and 10g cubes with the highest averaged SAR values. For that purpose, the center of the measured volume is aligned to the interpolated peak SAR value of a previously performed area scan.

The entire evaluation of the spatial peak values is performed within the post-processing engine (SEMCAD). The system always gives the maximum values for 1g and 10g cubes. The algorithm to find the cube with highest averaged SAR is divided into the following stages:

Extraction of the measured data (grid and values) from the Zoom Scan.

Calculation of the SAR value at every measurement point based on all stored data (A/D values and measurement parameters).

Generation of a high-resolution mesh within the measured volume.

Interpolation of all measured values from the measurement grid to the high-resolution grid

Extrapolation of the entire 3-D field distribution to the phantom surface over the distance from sensor to surface

Calculation of the averaged SAR within masses of 1g and 10g.

### Power Reference Measurement

The Power Reference Measurement and Power Drift Measurement are for monitoring the power drift of the device under test in the batch process. The minimum distance of probe sensors to surface determines the closest measurement point to phantom surface. This distance cannot be smaller than the distance of sensor calibration points to probe tip as defined in the probe properties

### Area & Zoom Scan Procedures

First Area Scan is used to locate the approximate location(s) of the local peak SAR value(s). The measurement grid within an Area Scan is defined by the grid extent, grid step size and grid offset. Next, in order to determine the EM field distribution in a three-dimensional spatial extension, Zoom Scan is required. The Zoom Scan is performed around the highest E-field value to determine the averaged SAR-distribution over 10g. Area scan and zoom scan resolution setting follows KDB 865664 D01v01r03 quoted below.

|   |                                    | $\leq 3$ GHz   | $> 3$ GHz   |  |
|---|------------------------------------|--|---|--|
| Maximum distance from closest measurement point (geometric center of probe sensors) to phantom surface  |                                    | 5 mm $\pm$ 1 mm  | $\frac{1}{2} \cdot \delta \cdot \ln(2)$ mm $\pm$ 0.5 mm                       |  |
| Maximum probe angle from probe axis to phantom surface normal at the measurement location   |                                    | $30^\circ \pm 1^\circ$   | $20^\circ \pm 1^\circ$  |  |
| Maximum area scan spatial resolution: $\Delta X_{Area}$ , $\Delta Y_{Area}$   |                                    | $\leq 2$ GHz: $\leq 15$ mm<br>2 – 3 GHz: $\leq 12$ mm  | 3 – 4 GHz: $\leq 12$ mm<br>4 – 6 GHz: $\leq 10$ mm                            |  |
|   |                                    | When the x or y dimension of the test device, in the measurement plane orientation, is smaller than the above, the measurement resolution must be $\leq$ the corresponding x or y dimension of the test device with at least one measurement point on the test device. |   |  |
| Maximum zoom scan spatial resolution: $\Delta X_{Zoom}$ , $\Delta Y_{Zoom}$   |                                    | $\leq 2$ GHz: $\leq 8$ mm<br>2 – 3 GHz: $\leq 5$ mm*   | 3 – 4 GHz: $\leq 5$ mm*<br>4 – 6 GHz: $\leq 4$ mm*                            |  |
| Maximum zoom scan spatial resolution, normal to phantom surface   | uniform grid: $\Delta Z_{Zoom}(n)$ | $\leq 5$ mm  | 3 – 4 GHz: $\leq 4$ mm<br>4 – 5 GHz: $\leq 3$ mm<br>5 – 6 GHz: $\leq 2$ mm    |  |
|   | graded grid                        | $\Delta Z_{Zoom}(1)$ : between 1 <sup>st</sup> two points closest to phantom surface   | $\leq 4$ mm   | 3 – 4 GHz: $\leq 3$ mm<br>4 – 5 GHz: $\leq 2.5$ mm<br>5 – 6 GHz: $\leq 2$ mm |
|   |                                    | $\Delta Z_{Zoom}(n>1)$ : between subsequent points   | $\leq 1.5 \cdot \Delta Z_{Zoom}(n-1)$ mm                                      |  |
| Minimum zoom scan volume  | x, y, z                            | $\geq 30$ mm   | 3 – 4 GHz: $\geq 28$ mm<br>4 – 5 GHz: $\geq 25$ mm<br>5 – 6 GHz: $\geq 22$ mm |  |
| Note: $\delta$ is the penetration depth of a plane-wave at normal incidence to the tissue medium; see IEEE Std 1528-2013 for details.   |                                    |  |   |  |
| * When zoom scan is required and the <i>reported</i> SAR from the <i>area scan based 1-g SAR estimation</i> procedures of KDB Publication 447498 is $\leq 1.4$ W/kg, $\leq 8$ mm, $\leq 7$ mm and $\leq 5$ mm zoom scan resolution may be applied, respectively, for 2 GHz to 3 GHz, 3 GHz to 4 GHz and 4 GHz to 6 GHz. |                                    |  |   |  |

### Volume Scan Procedures

The volume scan is used for assess overlapping SAR distributions for antennas transmitting in different frequency bands. It is equivalent to an oversized zoom scan used in standalone measurements. The measurement volume will be used to enclose all the simultaneous transmitting antennas. For antennas transmitting simultaneously in different frequency bands, the volume scan is measured separately in each frequency band. In order to sum correctly to compute the 1g aggregate SAR, the EUT remain in the same test position for all measurements and all volume scan use the same spatial resolution and grid spacing. When all volume scan were completed, the software, SEMCAD post-processor scan combine and subsequently superpose these measurement data to calculating the multiband SAR.

**SAR Averaged Methods**

In MVG, the interpolation and extrapolation are both based on the modified Quadratic Shepard's method. The interpolation scheme combines a least-square fitted function method and a weighted average method which are the two basic types of computational interpolation and approximation.

Extrapolation routines are used to obtain SAR values between the lowest measurement points and the inner phantom surface. The extrapolation distance is determined by the surface detection distance and the probe sensor offset. The uncertainty increases with the extrapolation distance. To keep the uncertainty within 1% for the 1g and 10g cubes, the extrapolation distance should not be larger than 5 mm.

**Power Drift Monitoring**

All SAR testing is under the EUT install full charged battery and transmit maximum output power. In MVG measurement software, the power reference measurement and power drift measurement procedures are used for monitoring the power drift of EUT during SAR test. Both these procedures measure the field at a specified reference position before and after the SAR testing. The software will calculate the field difference in dB. If the power drifts more than 5%, the SAR will be retested.

**Power Drift measurement**

The drift job measures the field at the same location as the most recent reference job within the same procedure, and with the same settings. The drift measurement gives the field difference in dB from the reading conducted within the last reference measurement. Several drift measurements are possible for

**Measurement Uncertainty**

Per KDB 865664 D01 SAR Measurement 100KHz to 6GHz ,when the highest measurement 1-g SAR within a frequency band is  $<1.5\text{W/kg}$ , the extensive SAR measurement uncertainty analysis described IEEE Std 1528-2013 is not required in SAR report submitted for equipment approval.

## 8. Conducted Output Power

| WLAN 2.4G           |               |      |      |               |             |      |
|---------------------|---------------|------|------|---------------|-------------|------|
| Mode                | 802.11b       |      |      | 802.11g       |             |      |
| Channel             | 1             | 6    | 11   | 1             | 6           | 11   |
| Frequency           | 2412          | 2437 | 2462 | 2412          | 2437        | 2462 |
| Average Power (dBm) | 9.35          | 9.17 | 9.61 | 9.27          | 9.43        | 9.47 |
| Mode                | 802.11n(HT20) |      |      | 802.11n(HT40) |             |      |
| Channel             | 1             | 6    | 11   | 3             | 6           | 9    |
| Frequency           | 2412          | 2437 | 2472 | 2422          | 2437        | 2452 |
| Average Power (dBm) | 9.14          | 9.29 | 9.33 | 9.58          | <b>9.70</b> | 9.57 |

| Bluetooth           |         |       |             |           |              |       |
|---------------------|---------|-------|-------------|-----------|--------------|-------|
| Mode                | GFSK    |       |             | Pi/4DQPSK |              |       |
| Channel             | 0       | 39    | 78          | 0         | 39           | 78    |
| Frequency           | 2402    | 2441  | 2480        | 2402      | 2441         | 2480  |
| Average Power (dBm) | 7.28    | 7.60  | <b>7.64</b> | 6.63      | 6.96         | 6.93  |
| Mode                | 8DPSK   |       |             | BLE(1M)   |              |       |
| Channel             | 0       | 39    | 78          | 0         | 20           | 39    |
| Frequency           | 2402    | 2441  | 2480        | 2402      | 2440         | 2480  |
| Average Power (dBm) | 6.64    | 7.02  | 7.00        | -0.93     | <b>-0.71</b> | -0.93 |
| Mode                | BLE(2M) |       |             |           |              |       |
| Channel             | 0       | 20    | 39          |           |              |       |
| Frequency           | 2402    | 2440  | 2480        |           |              |       |
| Average Power (dBm) | -1.01   | -1.29 | -0.99       |           |              |       |

| Channel | Frequency (GHz) | Max. Tune-up Power (dBm) | Max. Power (mW) | Test distance (mm) | Result | Exclusion thresholds for 1-g SAR | Exclusion thresholds for 10-g SAR |
|---------|-----------------|--------------------------|-----------------|--------------------|--------|----------------------------------|-----------------------------------|
| 20      | 2.440           | -0.50                    | 0.32            | 5                  | 0.16   | 3.0                              | 7.5                               |

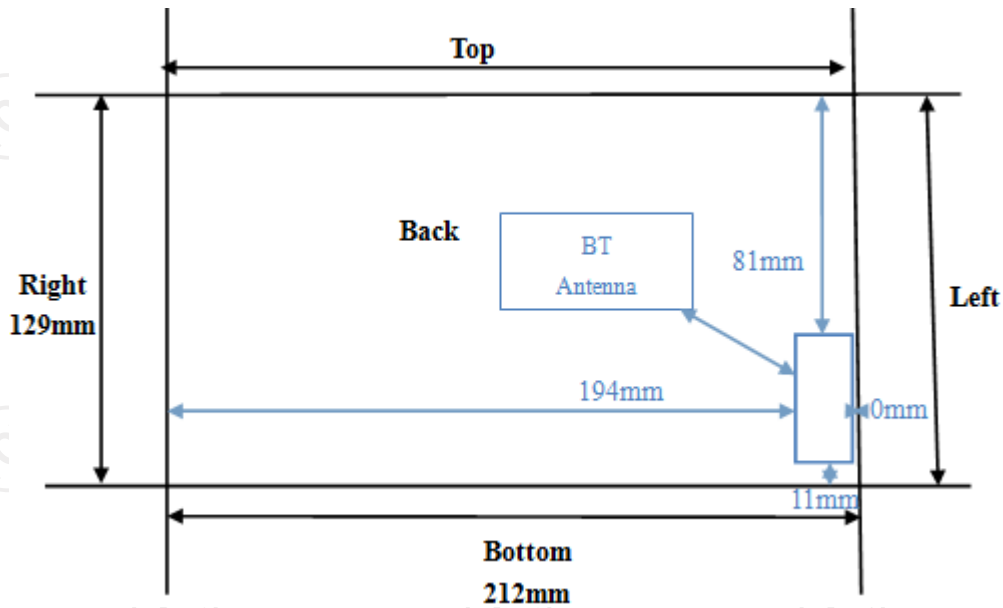
**Note**

- Per KDB 447498 D01v06, the 1-g SAR test exclusion thresholds for 100 MHz to 6 GHz at test separation distances ≤ 50 mm are determined by:  

$$[(\text{max. power of channel, including tune-up tolerance, mW}) / (\text{min. test separation distance, mm})] \cdot [\sqrt{f(\text{GHz})}] \leq 3.0$$
 for 1-g SAR, where  
 ·f(GHz) is the RF channel transmit frequency in GHz  
 ·Power and distance are rounded to the nearest mW and mm before calculation  
 ·The result is rounded to one decimal place for comparison
- Base on the result of note1, RF exposure evaluation of BT is not required.
- Per KDB 248227 D01 v02r02, choose the highest output power channel to test SAR and determine further SAR exclusion.
- The output power of all data rate were prescan, just the worst case (the lowest data rate) of all mode were shown in report.

## 9. Exposure Position Consideration

### 9.1. EUT Antenna Location



### 9.2. Test Position Consideration

| Test Positions |      |       |          |             |            |           |
|----------------|------|-------|----------|-------------|------------|-----------|
| Mode           | Back | Front | Top Side | Bottom Side | Right Side | Left Side |
| WIFI/ BT       | Yes  | Yes   | No       | Yes         | No         | Yes       |

**Note:**

1. Basing on KDB447498 section 4.3.1.SAR test for Top and Right sides was not required.

## 10. SAR Test Results Summary

### 10.1. Body-Worn 1g SAR Data

| Band | Mode    | Test Position with 0mm | CH. | Freq. (MHz) | Ave. Power (dBm) | Tune-Up Limit (dBm) | Power Drift (%) | Meas. SAR1g (W/kg) | Scaling Factor | Reported SAR1g (W/kg) | Limit (W/Kg) |
|------|---------|------------------------|-----|-------------|------------------|---------------------|-----------------|--------------------|----------------|-----------------------|--------------|
| 2.4G | 802.11n | Back                   | 6   | 2437        | 9.70             | 10.00               | 0.10            | 0.32               | 1.072          | <b>0.34</b>           | <b>1.60</b>  |
|      |         | Front                  | 6   | 2437        | 9.70             | 10.00               | -2.71           | 0.20               | 1.072          | 0.21                  |              |
|      |         | Left                   | 6   | 2437        | 9.70             | 10.00               | 0.62            | 0.03               | 1.072          | 0.03                  |              |
|      |         | Bottom                 | 6   | 2437        | 9.70             | 10.00               | 1.18            | 0.03               | 1.072          | 0.03                  |              |
| BT   | GFSK    | Back                   | 78  | 2480        | 7.64             | 8.00                | 1.95            | 0.14               | 1.086          | <b>0.15</b>           |              |
|      |         | Front                  | 78  | 2480        | 7.64             | 8.00                | 0.31            | 0.08               | 1.086          | 0.09                  |              |
|      |         | Left                   | 78  | 2480        | 7.64             | 8.00                | 1.10            | 0.02               | 1.086          | 0.02                  |              |
|      |         | Bottom                 | 78  | 2480        | 7.64             | 8.00                | 0.62            | 0.02               | 1.086          | 0.02                  |              |

**Note:**

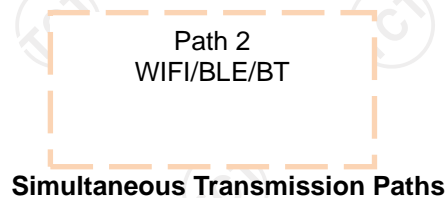
- Per KDB 447498 D01 v06, for each exposure position, if the highest output power channel Reported SAR  $\leq 0.8W/kg$ , other channels SAR testing is not necessary.
- Per KDB 447498 D01 v06, body-worn use is evaluated with the device positioned at 0 mm from a flat phantom filled with head tissue-equivalent medium.
- Per KDB 447498 D01 v06, the report SAR is measured SAR value adjusted for maximum tune-up tolerance. Scaling Factor =  $10^{[(\text{tune-up limit power (dBm)} - \text{Ave. power power (dBm)})/10]}$ , where tune-up limit is the maximum rated power among all production units.  
Reported SAR(W/kg) = Measured SAR (W/kg) \* Scaling Factor.
- Per KDB865664D01 v01r04 perform a second repeated measurement only the ratio of largest to smallest SAR for the original and first repeated measurement is  $>1.20$  or when the original or repeated measurement is  $\geq 1.45W/kg$ .
- Perform a second measurement only if the original, first and second repeated measurement is  $\geq 1.5w/kg$  and the ratio of largest to smallest SAR for the original, first and second repeated measurement is  $>1.20$ .
- Repeated measurement is not required when the original highest measured SAR is  $< 0.80 W/kg$



## 10.2. Simultaneous Transmission Conclusion

### Multi-Band Simultaneous Transmission Considerations

According to FCC KDB Publication 447498 D01v05r02, transmitters are considered to be transmitting simultaneously when there is overlapping transmission, with the exception of transmissions during network hand-offs with maximum hand-off duration less than 30 seconds. Possible transmission paths for the EUT are shown in below Figure and are color-coded to indicate communication modes which share the same path. Modes which share the same transmission path cannot transmit simultaneously with one another.



### Simultaneous Transmission Procedures

This device contains transmitters that may operate simultaneously. Therefore simultaneous transmission analysis is required. Per FCC KDB 447498 D01v05r02, simultaneous transmission SAR test exclusion may be applied when the sum of the 1-g SAR for all the simultaneous transmitting antennas in a specific a physical test configuration is  $\leq 1.6$  W/kg. When standalone SAR is not required to be measured, per FCC KDB 447498 D01v05r02 4.3.2.2), the following equation must be used to estimate the standalone 1g SAR and 10g extremity SAR for simultaneous transmission assessment involving that transmitter.

$$\text{Estimated SAR} = \frac{\sqrt{f(\text{GHz})}}{7.5(18.75)} \cdot \frac{\text{Max. power of channel, mW}}{\text{Min. Separation Distance, mm}}$$

| Mode | Max. tune-up Power (dBm) | Exposure Position    | Head | Body -worn |
|------|--------------------------|----------------------|------|------------|
|      |                          | Test Distance (mm)   | 5    | 5          |
| BT   | -0.50                    | Estimated SAR (W/kg) | /    | 0.01       |

**Note:**

1. When the minimum *test separation distance* is  $< 5$  mm, a distance of 5 mm according is applied to determine estimated SAR.
2.  $(\text{max. power of channel, including tune-up tolerance, mW}) / (\text{min. test separation distance, mm}) \cdot [\sqrt{f(\text{GHz})} / x]$  W/kg for test separation distances  $\leq 5$  mm; where  $x = 7.5$  for 1-g SAR, and  $x = 18.75$  for 10-g SAR.
3. Next to the mouth exposure requires 1-g SAR, and the wrist-worn condition requires 10-g extremity SAR.

### Simultaneous Transmission Possibilities

The Simultaneous Transmission Possibilities of this device are as below:

| NO. | Configuration | Head | Body-Worn | Hotspot |
|-----|---------------|------|-----------|---------|
| 1   | BT+WIFI(2.4)  | NO   | YES       | NO      |
| 2   | BLE+WIFI(2.4) | NO   | YES       | NO      |
| 3   | BT +WIFI(5G)  | NO   | YES       | NO      |
| 4.  | BLE+WIFI(5G)  | NO   | YES       | NO      |

**10.3. SAR Simultaneous Transmission Analysis**

| Band      | Test Position | Scaled SAR  |      |      |           | Σ SAR (W/kg) | SPLSR | Remark |
|-----------|---------------|-------------|------|------|-----------|--------------|-------|--------|
|           |               | WIFI (2.4G) | BT   | BLE  | WIFI (5G) |              |       |        |
| Body-Worn | Back          | 0.34        | 0.15 | 0.01 | /         | 0.49         | N/A   | N/A    |
|           | Front         | 0.21        | 0.09 | 0.01 | /         | 0.30         | N/A   | N/A    |
|           | Left          | 0.03        | 0.02 | 0.01 | /         | 0.05         | N/A   | N/A    |
|           | Bottom        | 0.03        | 0.02 | 0.01 | /         | 0.05         | N/A   | N/A    |

**10.4. Measurement Uncertainty (450MHz-3GHz)**

**UNCERTAINTY EVALUATION FOR HEADSET SAR**

| Uncertainty Component  | Description            | Uncertainty Value(%) | Probably Distribution | Div.       | (Ci) 1g         | (Ci) 10g        | Std. Unc. 1g(%) | Std. Unc. 10g(%) | v |
|--|------------------------|----------------------|-----------------------|------------|-----------------|-----------------|-----------------|------------------|---|
| <b>Measurement system</b>  |                        |                      |                       |            |                 |                 |                 |                  |   |
| Probe calibration  | 7.2.1                  | 5.8                  | N                     | 1          | 1               | 1               | 5.8             | 5.8              | ∞ |
| Axial isotropy   | 7.2.1.1                | 3.5                  | R                     | $\sqrt{3}$ | $(1-C_p)^{1/2}$ | $(1-C_p)^{1/2}$ | 1.43            | 1.43             | ∞ |
| Hemispherical isotropy   | 7.2.1.1                | 5.9                  | R                     | $\sqrt{3}$ | $\sqrt{C_p}$    | $\sqrt{C_p}$    | 2.41            | 2.41             | ∞ |
| Boundary Effects   | 7.2.1.4                | 1.00                 | R                     | $\sqrt{3}$ | 1               | 1               | 0.58            | 0.58             | ∞ |
| Linearity  | 7.2.1.2                | 4.70                 | R                     | $\sqrt{3}$ | 1               | 1               | 2.71            | 2.71             | ∞ |
| System detection limits  | 7.2.1.2                | 1                    | R                     | $\sqrt{3}$ | 1               | 1               | 0.58            | 0.58             | ∞ |
| Modulation Response  | 7.2.1.3                | 3                    | N                     | 1          | 1               | 1               | 3.00            | 3.00             | ∞ |
| Readout Electronics  | 7.2.1.5                | 0.5                  | N                     | 1          | 1               | 1               | 0.50            | 0.50             | ∞ |
| Response Time  | 7.2.1.6                | 0                    | R                     | $\sqrt{3}$ | 1               | 1               | 0.00            | 0.00             | ∞ |
| Integration Time   | 7.2.1.7                | 1.4                  | R                     | $\sqrt{3}$ | 1               | 1               | 0.81            | 0.81             | ∞ |
| RF Ambient Conditions-Noise  | 7.2.3.7                | 3                    | R                     | $\sqrt{3}$ | 1               | 1               | 1.73            | 1.73             | ∞ |
| RF Ambient Conditions-Reflection   | 7.2.3.7                | 3                    | R                     | $\sqrt{3}$ | 1               | 1               | 1.73            | 1.73             | ∞ |
| Probe positioned mechanical Tolerance  | 7.2.2.1                | 1.4                  | R                     | $\sqrt{3}$ | 1               | 1               | 0.81            | 0.81             | ∞ |
| Probe positioning with respect to phantom shell                                | 7.2.2.3                | 1.4                  | R                     | $\sqrt{3}$ | 1               | 1               | 0.81            | 0.81             | ∞ |
| Extrapolation interpolation and integration algorithms for Max.SAR evaluation  | 7.2.4                  | 2.3                  | R                     | 1          | 1               | 1               | 1.33            | 1.33             | ∞ |
| <b>Test sample related</b>   |                        |                      |                       |            |                 |                 |                 |                  |   |
| Test sample positioning  | 7.2.2.4.4              | 2.6                  | N                     | 1          | 1               | 1               | 2.60            | 2.60             | ∞ |
| Device holder uncertainty  | 7.2.2.4.2<br>7.2.2.4.3 | 3                    | N                     | 1          | 1               | 1               | 3.00            | 3.00             | ∞ |
| output power variation-SAR drift measurement                                   | 7.2.3.6                | 5                    | R                     | $\sqrt{3}$ | 1               | 1               | 2.89            | 2.89             | ∞ |
| SAR scaling  | 7.2.5                  | 2                    | R                     | $\sqrt{3}$ | 1               | 1               | 1.15            | 1.15             | ∞ |
| <b>Phantom and tissue parameters</b>   |                        |                      |                       |            |                 |                 |                 |                  |   |
| Phantom uncertainty (shape and thickness tolerances)                           | 7.2.2.2                | 4                    | R                     | $\sqrt{3}$ | 1               | 1               | 2.31            | 2.31             | ∞ |
| uncertainty in SAR correction for deviation (in permittivity and conductivity) | 7.2.6                  | 2                    | N                     | 1          | 1               | 0.84            | 2.00            | 1.68             | ∞ |
| Liquid conductivity (temperature uncertainty)                                  | 7.2.3.5                | 2.5                  | N                     | 1          | 0.78            | 0.71            | 1.95            | 1.78             | ∞ |
| Liquid conductivity -measurement uncertainty                                   | 7.2.3.3                | 4                    | N                     | 1          | 0.23            | 0.26            | 0.92            | 1.04             | ∞ |
| Liquid permittivity (temperature uncertainty)                                  | 7.2.3.5                | 2.5                  | N                     | 1          | 0.78            | 0.71            | 1.95            | 1.78             | ∞ |
| Liquid permittivity measurement uncertainty                                    | 7.2.3.4                | 5                    | N                     | 1          | 0.23            | 0.26            | 1.15            | 1.30             | ∞ |
| Combined standard uncertainty  |                        |                      | RSS                   |            |                 |                 | 10.83           | 10.54            |   |
| Expanded uncertainty (95%CONFIDENCEINTERVAL)                                   |                        |                      | k                     |            |                 |                 | 21.26           | 21.08            |   |

**UNCERTAINTY FOR PERFORMANCE CHECK**

| Uncertainty Component  | Description | Uncertainty Value(%) | Probably Distribution | Div.       | (Ci) 1g         | (Ci) 10g        | Std. Unc. 1g(%) | Std. Unc. 10g(%) | v |
|--|-------------|----------------------|-----------------------|------------|-----------------|-----------------|-----------------|------------------|---|
| <b>Measurement system</b>  |             |                      |                       |            |                 |                 |                 |                  |   |
| Probe calibration  | 7.2.1       | 5.8                  | N                     | 1          | 1               | 1               | 5.8             | 5.8              | ∞ |
| Axial isotropy   | 7.2.1.1     | 3.5                  | R                     | $\sqrt{3}$ | $(1-C_p)^{1/2}$ | $(1-C_p)^{1/2}$ | 1.43            | 1.43             | ∞ |
| Hemispherical isotropy   | 7.2.1.1     | 5.9                  | R                     | $\sqrt{3}$ | $\sqrt{C_p}$    | $\sqrt{C_p}$    | 2.41            | 2.41             | ∞ |
| Boundary Effects   | 7.2.1.4     | 1.00                 | R                     | $\sqrt{3}$ | 1               | 1               | 0.58            | 0.58             | ∞ |
| Linearity  | 7.2.1.2     | 4.70                 | R                     | $\sqrt{3}$ | 1               | 1               | 2.71            | 2.71             | ∞ |
| System detection limits  | 7.2.1.2     | 1                    | R                     | $\sqrt{3}$ | 1               | 1               | 0.58            | 0.58             | ∞ |
| Modulation Response  | 7.2.1.3     | 3                    | N                     | 1          | 1               | 1               | 0.00            | 0.00             | ∞ |
| Readout Electronics  | 7.2.1.5     | 0.5                  | N                     | 1          | 1               | 1               | 0.50            | 0.50             | ∞ |
| Response Time  | 7.2.1.6     | 0                    | R                     | $\sqrt{3}$ | 1               | 1               | 0.00            | 0.00             | ∞ |
| Integration Time   | 7.2.1.7     | 1.4                  | R                     | $\sqrt{3}$ | 1               | 1               | 0.81            | 0.81             | ∞ |
| RF Ambient Conditions-Noise  | 7.2.3.7     | 3                    | R                     | $\sqrt{3}$ | 1               | 1               | 1.73            | 1.73             | ∞ |
| RF Ambient Conditions-Reflection   | 7.2.3.7     | 3                    | R                     | $\sqrt{3}$ | 1               | 1               | 1.73            | 1.73             | ∞ |
| Probe positioned mechanical Tolerance  | 7.2.2.1     | 1.4                  | R                     | $\sqrt{3}$ | 1               | 1               | 0.81            | 0.81             | ∞ |
| Probe positioning with respect to phantom shell                                | 7.2.2.3     | 1.4                  | R                     | $\sqrt{3}$ | 1               | 1               | 0.81            | 0.81             | ∞ |
| Extrapolation interpolation and integration algorithms for Max.SAR evaluation  | 7.2.4       | 2.3                  | R                     | 1          | 1               | 1               | 1.33            | 1.33             | ∞ |
| <b>Dipole</b>  |             |                      |                       |            |                 |                 |                 |                  |   |
| Deviation of experimental source from numerical source                         |             | 4                    | N                     | 1          | 1               | 1               | 4.00            | 4.00             | ∞ |
| Input power and SAR drift measurement  | 7.2.3.6     | 5                    | R                     | $\sqrt{3}$ | 1               | 1               | 2.89            | 2.89             | ∞ |
| Dipole axis to liquid distance   |             | 2                    | R                     | $\sqrt{3}$ | 1               | 1               |                 |                  | ∞ |
| <b>Phantom and tissue parameters</b>   |             |                      |                       |            |                 |                 |                 |                  |   |
| Phantom uncertainty (shape and thickness tolerances)                           | 7.2.2.2     | 4                    | R                     | $\sqrt{3}$ | 1               | 1               | 2.31            | 2.31             | ∞ |
| uncertainty in SAR correction for deviation (in permittivity and conductivity) | 7.2.6       | 2                    | N                     | 1          | 1               | 0.84            | 2.00            | 1.68             | ∞ |
| Liquid conductivity (temperature uncertainty)                                  | 7.2.3.5     | 2.5                  | N                     | 1          | 0.78            | 0.71            | 1.95            | 1.78             | ∞ |
| Liquid conductivity -measurement uncertainty                                   | 7.2.3.3     | 4                    | N                     | 1          | 0.23            | 0.26            | 0.92            | 1.04             | ∞ |
| Liquid permittivity (temperature uncertainty)                                  | 7.2.3.5     | 2.5                  | N                     | 1          | 0.78            | 0.71            | 1.95            | 1.78             | ∞ |
| Liquid permittivity measurement uncertainty                                    | 7.2.3.4     | 5                    | N                     | 1          | 0.23            | 0.26            | 1.15            | 1.30             | ∞ |
| Combined standard uncertainty  |             |                      | RSS                   |            |                 |                 | 10.15           | 10.05            |   |
| Expanded uncertainty (95%CONFIDENCEINTERVAL)                                   |             |                      | k                     |            |                 |                 | 20.29           | 20.10            |   |

### 10.5. Test Equipment List

| Test Equipment                      | Manufacturer | Model           | Serial Number             | Calibration              |                         |
|-------------------------------------|--------------|-----------------|---------------------------|--------------------------|-------------------------|
|                                     |              |                 |                           | Calibration Date (D.M.Y) | Calibration Due (D.M.Y) |
| PC                                  | Lenovo       | H3050           | N/A                       | N/A                      | N/A                     |
| Signal Generator                    | Agilent      | N5182A          | MY47070282                | Jun. 27, 2024            | Jun. 26, 2025           |
| Multimeter                          | Keithley     | Multimeter 2000 | 4078275                   | Jun. 27, 2024            | Jun. 26, 2025           |
| Network Analyzer                    | Agilent      | 8753E           | US38432457                | Jun. 27, 2024            | Jun. 26, 2025           |
| Wireless Communication Test Set     | R & S        | CMU200          | 111382                    | Jun. 27, 2024            | Jun. 26, 2025           |
| Wideband Radio Communication Tester | R&S          | CMW500          | 114220                    | Jun. 27, 2024            | Jun. 26, 2025           |
| Power Meter                         | Agilent      | E4418B          | GB43312526                | Jun. 27, 2024            | Jun. 26, 2025           |
| Power Meter                         | Agilent      | E4416A          | MY45101555                | Jun. 27, 2024            | Jun. 26, 2025           |
| Power Meter                         | Agilent      | N1912A          | MY50001018                | Jun. 27, 2024            | Jun. 26, 2025           |
| Power Sensor                        | Agilent      | E9301A          | MY41497725                | Jun. 27, 2024            | Jun. 26, 2025           |
| Power Sensor                        | Agilent      | E9327A          | MY44421198                | Jun. 27, 2024            | Jun. 26, 2025           |
| Power Sensor                        | Agilent      | E9323A          | MY53070005                | Jun. 27, 2024            | Jun. 26, 2025           |
| Power Amplifier                     | PE           | PE15A4019       | 112342                    | N/A                      | N/A                     |
| Directional Coupler                 | Agilent      | 722D            | MY52180104                | N/A                      | N/A                     |
| Attenuator                          | Chensheng    | FF779           | 134251                    | N/A                      | N/A                     |
| E-Field PROBE                       | MVG          | SSE2            | SN 25/22<br>EPGO375       | Jun. 29, 2024            | Jun. 28, 2025           |
| DIPOLE 2450                         | MVG          | SID 2450        | SN 16/15 DIP<br>2G450-374 | Jun. 05, 2024            | Jun. 04, 2027           |
| DIPOLE 5000-6000                    | MVG          | SID 5000-6000   | SN 13/14<br>WGA 21        | May. 15, 2024            | May. 14, 2025           |
| Limesar Dielectric Probe            | MVG          | SCLMP           | SN 19/15<br>OCPG71        | Jun. 05, 2024            | Jun. 04, 2027           |
| Communication Antenna               | MVG          | ANTA59          | SN 39/14<br>ANTA59        | N/A                      | N/A                     |
| Mobile Phone Position Device        | MVG          | MSH101          | SN 19/15<br>MSH101        | N/A                      | N/A                     |
| Dummy Probe                         | MVG          | DP66            | SN 13/15 DP66             | N/A                      | N/A                     |
| SAM PHANTOM                         | MVG          | SAM120          | SN 19/15<br>SAM120        | N/A                      | N/A                     |
| PHANTOM TABLE                       | MVG          | TABP101         | SN 19/15<br>TABP101       | N/A                      | N/A                     |
| Robot TABLE                         | MVG          | TABP61          | SN 19/15<br>TABP61        | N/A                      | N/A                     |
| 6 AXIS ROBOT                        | KUKA         | KR6-R900        | 501822                    | N/A                      | N/A                     |

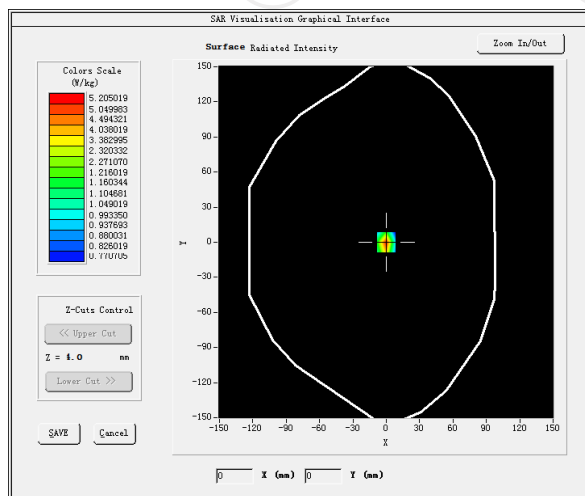
**Note:** 1. N/A means this equipment no need to calibrate  
 2. Each Time means this device need to calibrate every use time  
 3. The dipole was not damaged properly repaired.  
 4. The measured SAR deviates from the calibrated SAR value by less than 10%  
 5. The most recent return-loss result meets the required 20 dB minimum return-loss requirement  
 6. The most recent measurement of the real or imaginary parts of the impedance deviates by less than 5 Ω from the previous measurement.

## 11. System Check Results

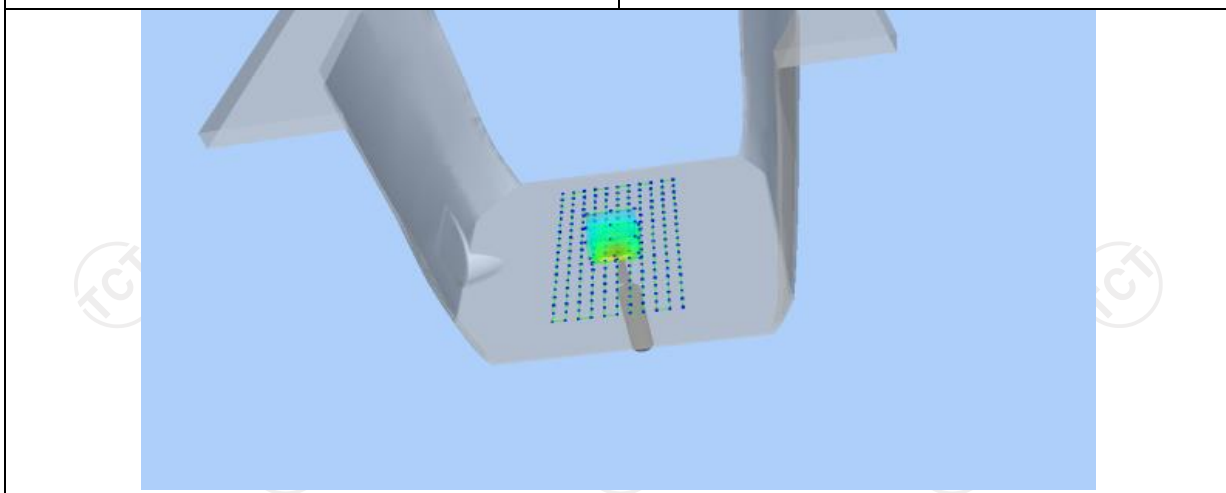
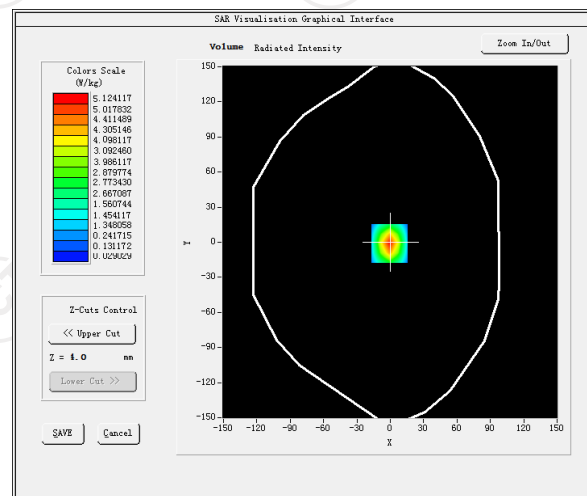
Date of measurement: 07/17/2024 Test mode: 2450MHz (Head)  
 Product Description: Validation  
 Dipole Model: SID2450  
 E-Field Probe: SSE2 (SN 25/22 EPGO375)

|  |                  |
|--|------------------|
| Phantom                                | Validation plane |
| Input Power                            | 100mW            |
| Crest Factor                           | 1.0              |
| Probe Conversion factor                | 2.31             |
| Frequency (MHz)                        | 2450.000000      |
| Relative permittivity (real part)      | 37.821613        |
| Relative permittivity (imaginary part) | 13.546980        |
| Conductivity (S/m)                     | 1.834111         |
| Variation (%)                          | -0.470000        |
| <b>SAR 10g (W/Kg)</b>                  | <b>2.364445</b>  |
| <b>SAR 1g (W/Kg)</b>                   | <b>4.994244</b>  |

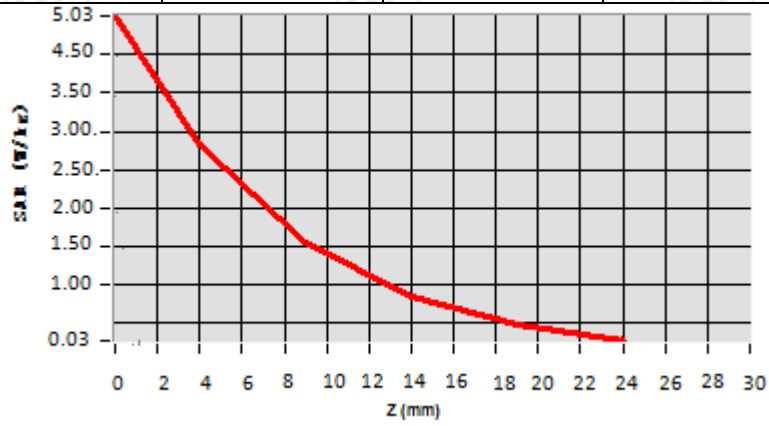
### SURFACE SAR



### VOLUME SAR



|            |        |        |        |        |        |
|------------|--------|--------|--------|--------|--------|
| Z (mm)     | 0.00   | 4.00   | 9.00   | 14.00  | 19.00  |
| SAR (W/Kg) | 5.0262 | 2.7584 | 1.5026 | 0.8252 | 0.4125 |



**Hot spot position**



**12. SAR Test Data**

2.4G

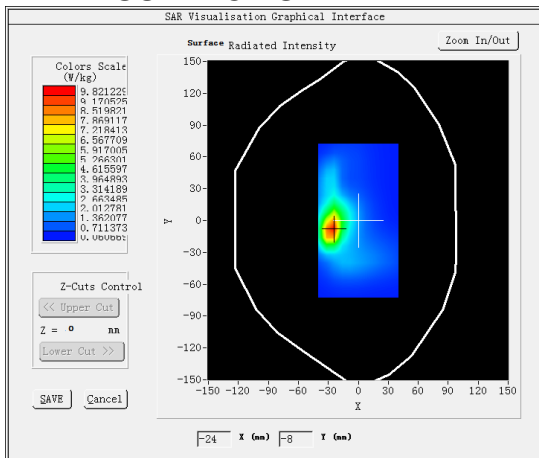
**MEASUREMENT 1**

Middle Band SAR (Channel 11):

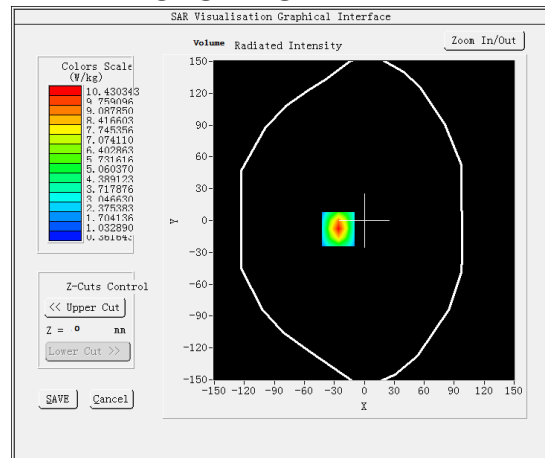
Date: 07/17/2024

|  |   |
|--|---|
| Frequency (MHz)                        | 2437.000000   |
| Relative permittivity (real part)      | 38.352823   |
| Relative permittivity (imaginary part) | 13.671675   |
| Conductivity (S/m)                     | 1.925428  |
| Variation (%)                          | 0.100000  |
| Crest Factor                           | 1.0   |
| Probe Conversion factor                | 2.37  |
| E-Field Probe:                         | SSE2 (SN 25/22 EPGO375)   |
| Area Scan                              | <u>dx=12mm dy=12mm, h= 5.00 mm</u>  |
| ZoomScan                               | <u>5x5x7,dx=5mm dy=5mm</u><br><u>dz=5mm,Complete/ndx=8mm dy=8mm, h=</u><br><u>5.00 mm</u> |
| Phantom                                | Validation plane  |
| Device Position                        | Body back(0mm)  |
| Band                                   | <u>IEEE 802.11n ISM</u>   |

**SURFACE SAR**



**VOLUME SAR**



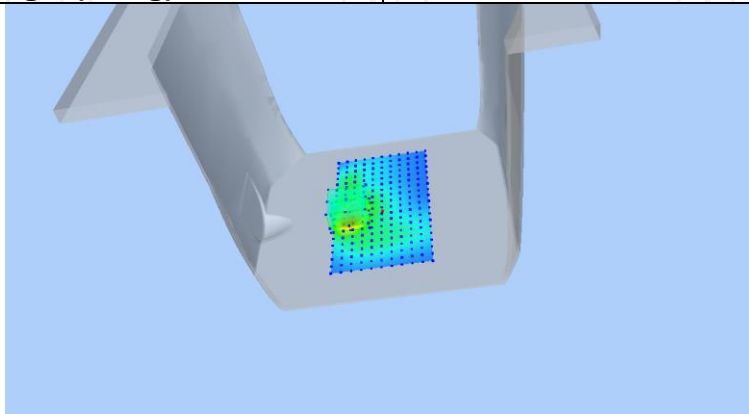
Maximum location: X=29.00, Y=-30.00 SAR Peak: 0.76 W/kg

SAR 10g (W/Kg)

0.223012

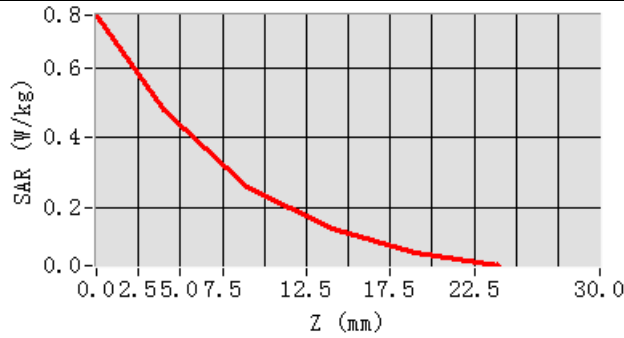
SAR 1g (W/Kg)

0.320613

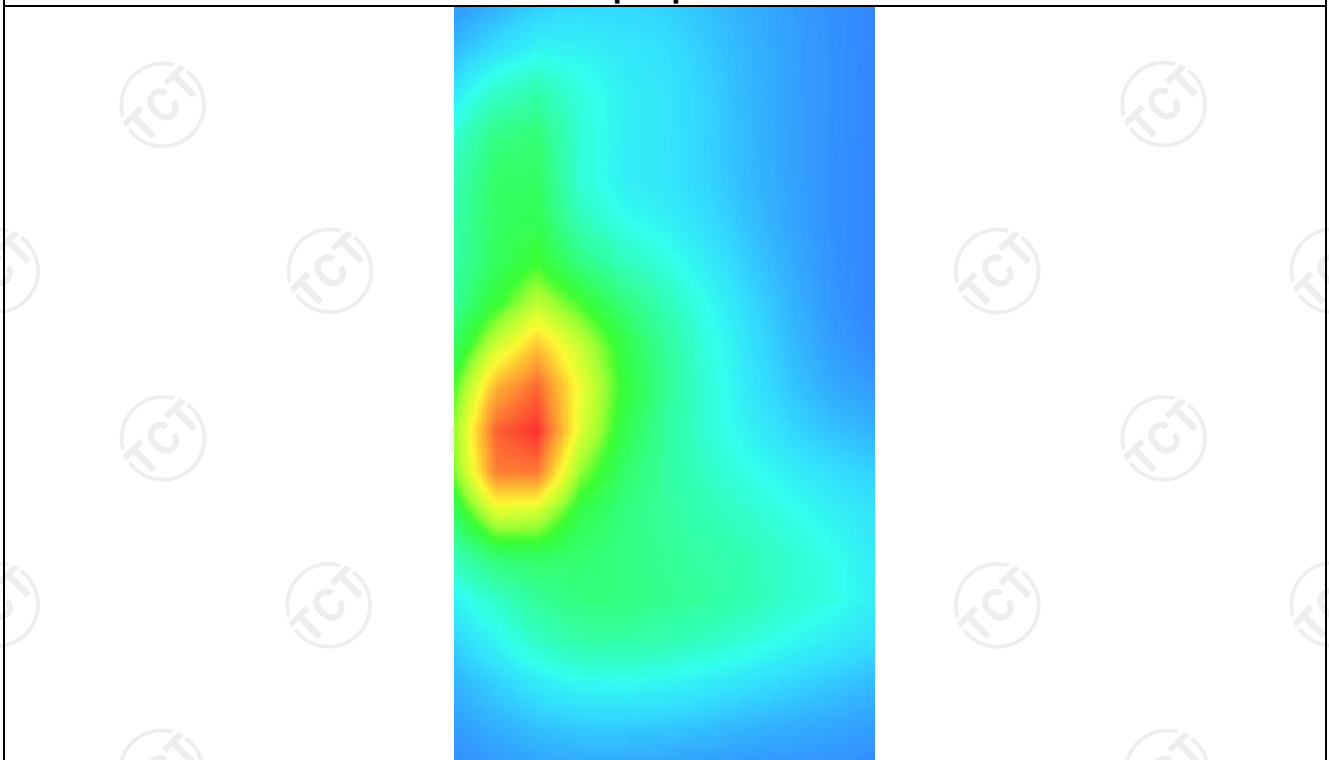




|            |        |        |        |        |        |
|------------|--------|--------|--------|--------|--------|
| Z (mm)     | 0.00   | 4.00   | 9.00   | 14.00  | 19.00  |
| SAR (W/Kg) | 0.7543 | 0.4792 | 0.2602 | 0.1365 | 0.0698 |



**Hot spot position**



BT

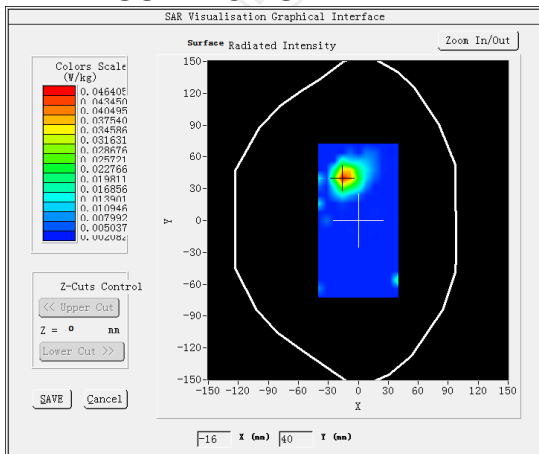
**MEASUREMENT 1**

High Band SAR(Channel 78):

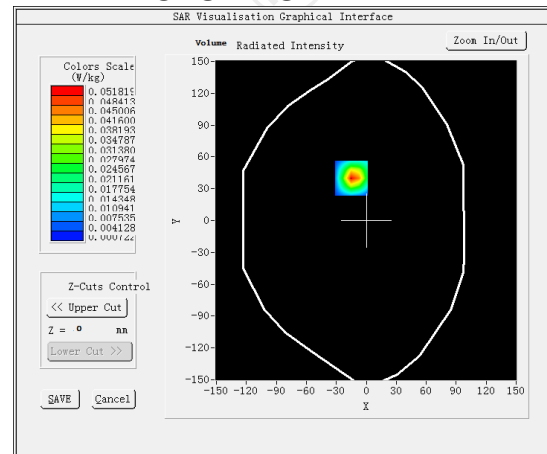
Date: 07/17/2024

|   |   |
|---|---|
| <b>Frequency (MHz)</b>                        | 2480.000000   |
| <b>Relative permittivity (real part)</b>      | 38.353847   |
| <b>Relative permittivity (imaginary part)</b> | 14.318478   |
| <b>Conductivity (S/m)</b>                     | 1.832374  |
| <b>Variation (%)</b>                          | 1.950000  |
| <b>Crest Factor</b>                           | 1.0   |
| <b>Probe Conversion factor</b>                | 2.31  |
| <b>E-Field Probe:</b>                         | SSE2 (SN 25/22 EPG0375)   |
| <b>Area Scan</b>                              | <u>dx=12mm dy=12mm, h= 5.00 mm</u>  |
| <b>ZoomScan</b>                               | <u>5x5x7,dx=5mm dy=5mm</u><br><u>dz=5mm,Complete/ndx=8mm dy=8mm, h=</u><br><u>5.00 mm</u> |
| <b>Phantom</b>                                | Validation plane  |
| <b>Device Position</b>                        | Body back(0mm)  |
| <b>Band</b>                                   | <u>Bluetooth GFSK</u>   |

**SURFACE SAR**



**VOLUME SAR**



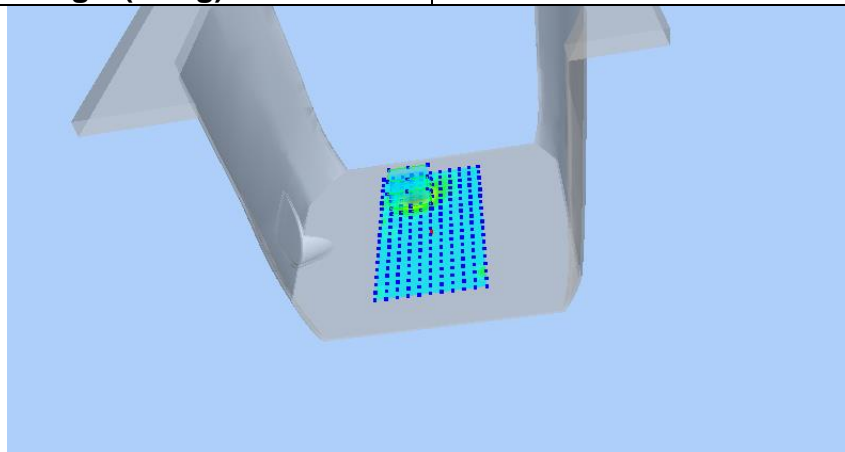
**Maximum location: X=-15.00, Y=40.00 SAR Peak: 0.22 W/kg**

**SAR 10g (W/Kg)**

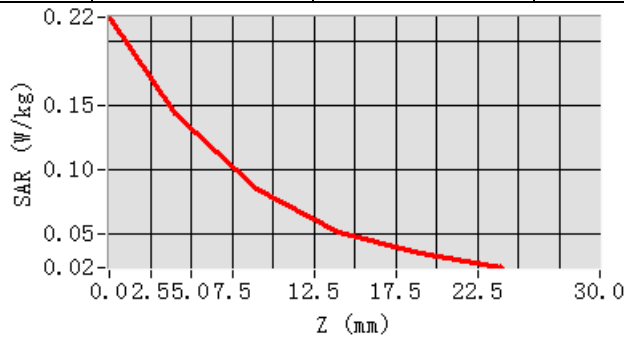
0.082421

**SAR 1g (W/Kg)**

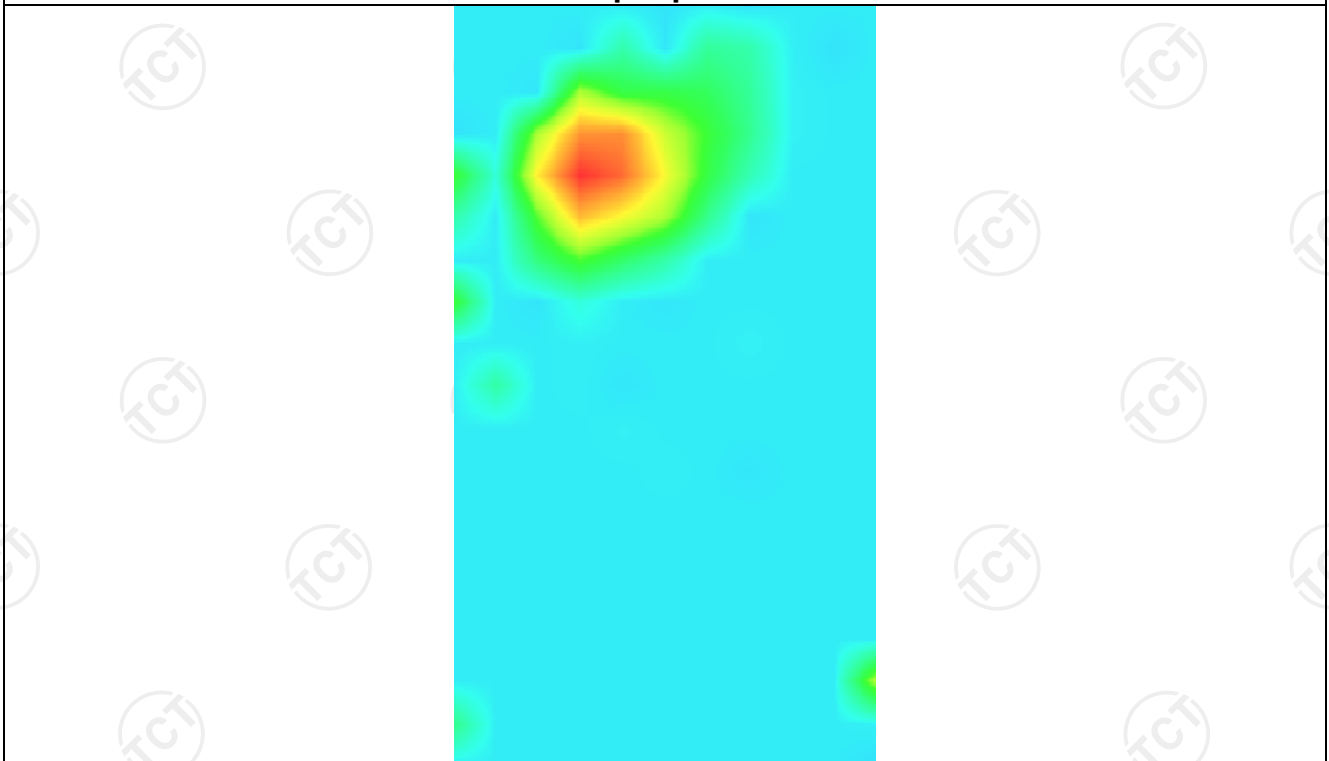
0.142610



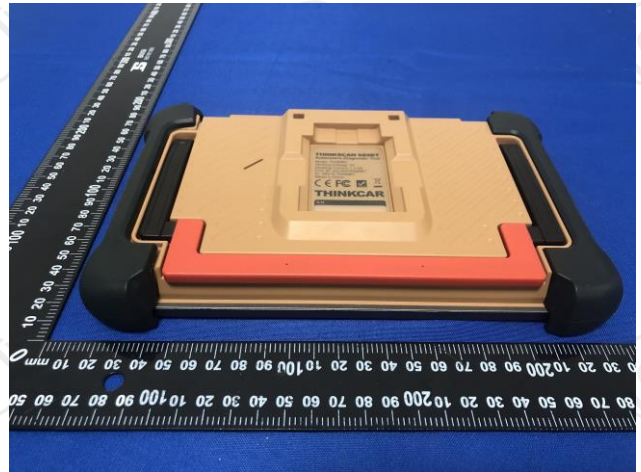
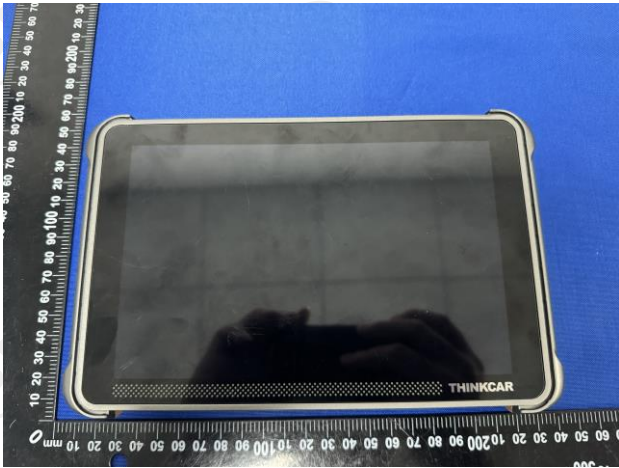
|                   |               |               |               |               |               |
|-------------------|---------------|---------------|---------------|---------------|---------------|
| <b>Z (mm)</b>     | <b>0.00</b>   | <b>4.00</b>   | <b>9.00</b>   | <b>14.00</b>  | <b>19.00</b>  |
| <b>SAR (W/Kg)</b> | <b>0.2186</b> | <b>0.1441</b> | <b>0.0851</b> | <b>0.0523</b> | <b>0.0350</b> |



**Hot spot position**



### Appendix A: EUT Photos



## Liquid depth



The Body Liquid of 2450MHz (15.3cm)

**Appendix B: Test Setup Photos**



Body worn – Back (0mm)



Body worn – Left(0mm)



Body worn –Front (0mm)



Body worn –Bottom (0mm)

## Appendix C: Probe Calibration Certificate

COMOSAR E-FIELD Probe



### COMOSAR E-Field Probe Calibration Report

Ref : ACR.180.7.22.BES.B

#### SHENZHEN TONGCE TESTING LAB

2101 & 2201, ZHENCHANG FACTORY RENSHAN INDUSTRIAL ZONE, FUHAI SUBDISTRICT, BAO'AN DISTRICT SHENZHEN, GUANGDONG, 518103, PEOPLE'S REPUBLIC OF CHINA  
**MVG COMOSAR DOSIMETRIC E-FIELD PROBE**  
SERIAL NO.: SN 25/22 EPG0375

Calibrated at MVG

Z.I. de la pointe du diable

Technopôle Brest Iroise – 295 avenue Alexis de Rochon  
29280 PLOUZANE - FRANCE

Calibration date: 06/29/2024



Accreditations #2-6789  
Scope available on [www.cofrac.fr](http://www.cofrac.fr)

The use of the Cofrac brand and the accreditation references is prohibited from any reproduction.

#### Summary:

This document presents the method and results from an accredited COMOSAR Dosimetric E-Field Probe calibration performed at MVG, using the CALIPROBE test bench, for use with a MVG COMOSAR system only. The test results covered by accreditation are traceable to the International System of Units (SI).



COMOSAR E-FIELD PROBE CALIBRATION REPORT

Ref: ACR.180.7.22.BES.B

|                        | Name           | Function                | Date      | Signature |
|------------------------|----------------|-------------------------|-----------|-----------|
| Prepared by :          | Jérôme Le Gall | Measurement Responsible | 6/30/2024 |           |
| Checked & approved by: | Jérôme Luc     | Technical Manager       | 6/30/2024 |           |
| Authorized by:         | Yann Toutain   | Laboratory Director     | 7/05/2024 |           |

|                | Customer Name               |
|----------------|-----------------------------|
| Distribution : | Shenzhen Tongce Testing Lab |

| Issue | Name           | Date      | Modifications   |
|-------|----------------|-----------|-----------------|
| A     | Jérôme Le Gall | 6/30/2024 | Initial release |
|       |                |           |                 |
|       |                |           |                 |





TABLE OF CONTENTS

|     |                                       |    |
|-----|---------------------------------------|----|
| 1   | Device Under Test .....               | 4  |
| 2   | Product Description .....             | 4  |
| 2.1 | General Information .....             | 4  |
| 3   | Measurement Method .....              | 4  |
| 3.1 | Linearity .....                       | 4  |
| 3.2 | Sensitivity .....                     | 4  |
| 3.3 | Lower Detection Limit .....           | 5  |
| 3.4 | Isotropy .....                        | 5  |
| 3.1 | Boundary Effect .....                 | 5  |
| 4   | Measurement Uncertainty .....         | 6  |
| 5   | Calibration Measurement Results ..... | 6  |
| 5.1 | Sensitivity in air .....              | 6  |
| 5.2 | Linearity .....                       | 7  |
| 5.3 | Sensitivity in liquid .....           | 8  |
| 5.4 | Isotropy .....                        | 9  |
| 6   | List of Equipment .....               | 10 |



**1 DEVICE UNDER TEST**

| Device Under Test                        |   |
|--|---|
| Device Type                              | COMOSAR DOSIMETRIC E FIELD PROBE  |
| Manufacturer                             | MVG   |
| Model                                    | SSE2  |
| Serial Number                            | SN 25/22 EPGO375  |
| Product Condition (new / used)           | New   |
| Frequency Range of Probe                 | 0.15 GHz-6GHz   |
| Resistance of Three Dipoles at Connector | Dipole 1: R1=0.197 MΩ<br>Dipole 2: R2=0.230 MΩ<br>Dipole 3: R3=0.208 MΩ |

**2 PRODUCT DESCRIPTION**

**2.1 GENERAL INFORMATION**

MVG's COMOSAR E field Probes are built in accordance to the IEC/IEEE 62209-1528 and FCC KDB865664 D01 standards.



**Figure 1 – MVG COMOSAR Dosimetric E field Probe**

|  |        |
|--|--------|
| Probe Length                               | 330 mm |
| Length of Individual Dipoles               | 2 mm   |
| Maximum external diameter                  | 8 mm   |
| Probe Tip External Diameter                | 2.5 mm |
| Distance between dipoles / probe extremity | 1 mm   |

**3 MEASUREMENT METHOD**

The IEC/IEEE 62209-1528 and FCC KDB865664 D01 standards provide recommended practices for the probe calibrations, including the performance characteristics of interest and methods by which to assess their affect. All calibrations / measurements performed meet the fore mentioned standards.

**3.1 LINEARITY**

The evaluation of the linearity was done in free space using the waveguide, performing a power sweep to cover the SAR range 0.01W/kg to 100W/kg.

**3.2 SENSITIVITY**

The sensitivity factors of the three dipoles were determined using a two step calibration method (air and tissue simulating liquid) using waveguides as outlined in the standards.

Page: 4/11

*Template\_ACR.DDD.N.YY.MVGB.ISSUE\_COMOSAR Probe vK*

*This document shall not be reproduced, except in full or in part, without the written approval of MVG. The information contained herein is to be used only for the purpose for which it is submitted and is not to be released in whole or part without written approval of MVG.*



### 3.3 LOWER DETECTION LIMIT

The lower detection limit was assessed using the same measurement set up as used for the linearity measurement. The required lower detection limit is 10 mW/kg.

### 3.4 ISOTROPY

The axial isotropy was evaluated by exposing the probe to a reference wave from a standard dipole with the dipole mounted under the flat phantom in the test configuration suggested for system validations and checks. The probe was rotated along its main axis from 0 to 360 degrees in 15-degree steps. The hemispherical isotropy is determined by inserting the probe in a thin plastic box filled with tissue-equivalent liquid, with the plastic box illuminated with the fields from a half wave dipole. The dipole is rotated about its axis (0°–180°) in 15° increments. At each step the probe is rotated about its axis (0°–360°).

### 3.1 BOUNDARY EFFECT

The boundary effect is defined as the deviation between the SAR measured data and the expected exponential decay in the liquid when the probe is oriented normal to the interface. To evaluate this effect, the liquid filled flat phantom is exposed to fields from either a reference dipole or waveguide. With the probe normal to the phantom surface, the peak spatial average SAR is measured and compared to the analytical value at the surface.

The boundary effect uncertainty can be estimated according to the following uncertainty approximation formula based on linear and exponential extrapolations between the surface and  $d_{be} + d_{step}$  along lines that are approximately normal to the surface:

$$SAR_{uncertainty} [\%] = \Delta SAR_{be} \frac{(d_{be} + d_{step})^2}{2d_{step}} \frac{(e^{-d_{be}/(\delta/2)})}{\delta/2} \text{ for } (d_{be} + d_{step}) < 10 \text{ mm}$$

where

|                     |  |
|---------------------|--|
| $SAR_{uncertainty}$ | is the uncertainty in percent of the probe boundary effect   |
| $d_{be}$            | is the distance between the surface and the closest <i>zoom-scan</i> measurement point, in millimetre  |
| $\Delta_{step}$     | is the separation distance between the first and second measurement points that are closest to the phantom surface, in millimetre, assuming the boundary effect at the second location is negligible |
| $\delta$            | is the minimum penetration depth in millimetres of the head tissue-equivalent liquids defined in this standard, i.e., $\delta \approx 14$ mm at 3 GHz;   |
| $\Delta SAR_{be}$   | in percent of SAR is the deviation between the measured SAR value, at the distance $d_{be}$ from the boundary, and the analytical SAR value.   |

The measured worst case boundary effect SAR uncertainty[%] for scanning distances larger than 4mm is 1.0% Limit ,2%).



**4 MEASUREMENT UNCERTAINTY**

The guidelines outlined in the IEC/IEEE 62209-1528 and FCC KDB865664 D01 standards were followed to generate the measurement uncertainty associated with an E-field probe calibration using the waveguide technique. All uncertainties listed below represent an expanded uncertainty expressed at approximately the 95% confidence level using a coverage factor of k=2, traceable to the Internationally Accepted Guides to Measurement Uncertainty.

| Uncertainty analysis of the probe calibration in waveguide |                       |                          |         |    |                          |
|--|-----------------------|--------------------------|---------|----|--------------------------|
| ERROR SOURCES  | Uncertainty value (%) | Probability Distribution | Divisor | ci | Standard Uncertainty (%) |
| Expanded uncertainty<br>95 % confidence level k = 2        |                       |                          |         |    | 14 %                     |

**5 CALIBRATION MEASUREMENT RESULTS**

| Calibration Parameters |             |
|------------------------|-------------|
| Liquid Temperature     | 20 +/- 1 °C |
| Lab Temperature        | 20 +/- 1 °C |
| Lab Humidity           | 30-70 %     |

**5.1 SENSITIVITY IN AIR**

| Normx dipole<br>1 (µV/(V/m) <sup>2</sup> ) | Normy dipole<br>2 (µV/(V/m) <sup>2</sup> ) | Normz dipole<br>3 (µV/(V/m) <sup>2</sup> ) |
|--|--|--|
| 0.64                                       | 0.53                                       | 0.44                                       |

| DCP dipole 1<br>(mV) | DCP dipole 2<br>(mV) | DCP dipole 3<br>(mV) |
|----------------------|----------------------|----------------------|
| 106                  | 108                  | 109                  |

Calibration curves  $e_i=f(V)$  (i=1,2,3) allow to obtain E-field value using the formula:

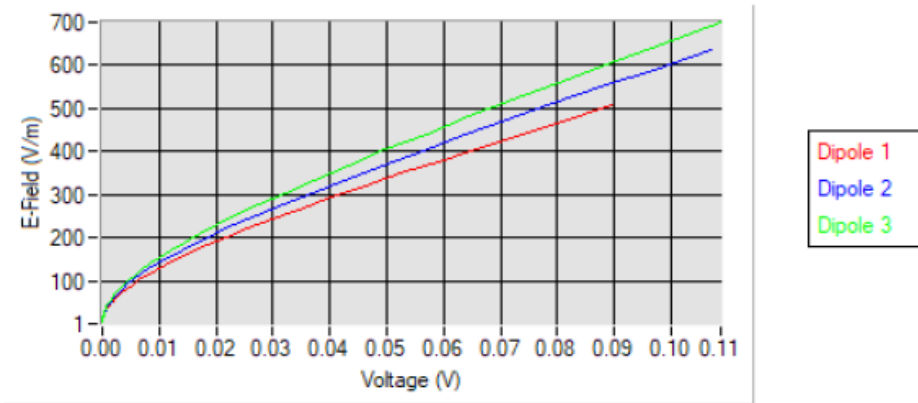
$$E = \sqrt{E_1^2 + E_2^2 + E_3^2}$$



COMOSAR E-FIELD PROBE CALIBRATION REPORT

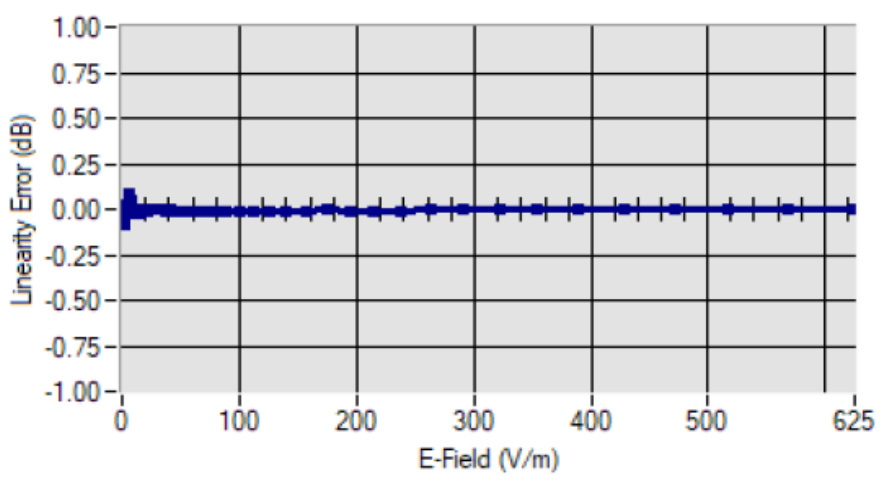
Ref: ACR.180.7.22.BES.B

Calibration curves



5.2 LINEARITY

Linearity



Linearity: +/- 1.94% (+/- 0.09dB)



5.3 SENSITIVITY IN LIQUID

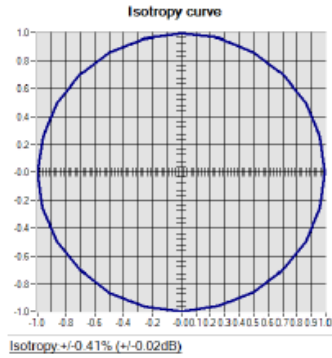
| <u>Liquid</u> | <u>Frequency<br/>(MHz +/-<br/>100MHz)</u> | <u>ConvF</u> |
|---------------|---|--------------|
| HL750         | 750                                       | 1.71         |
| BL750         | 750                                       | 1.78         |
| HL900         | 900                                       | 1.91         |
| BL900         | 900                                       | 1.96         |
| HL1800        | 1800                                      | 2.08         |
| BL1800        | 1800                                      | 2.16         |
| HL2000        | 2000                                      | 2.03         |
| BL2000        | 2000                                      | 2.10         |
| HL2450        | 2450                                      | 2.31         |
| BL2450        | 2450                                      | 2.37         |
| HL2600        | 2600                                      | 2.16         |
| BL2600        | 2600                                      | 2.23         |
| HL3500        | 3500                                      | 2.21         |
| BL3500        | 3500                                      | 2.28         |
| HL3700        | 3700                                      | 3.45         |
| BL3700        | 3700                                      | 3.15         |
| HL4600        | 4600                                      | 3.30         |
| BL4600        | 4600                                      | 3.70         |
| HL5200        | 5200                                      | 2.01         |
| BL5200        | 5200                                      | 2.08         |
| HL5600        | 5600                                      | 2.07         |
| BL5600        | 5600                                      | 2.12         |
| HL5800        | 5800                                      | 2.06         |
| BL5800        | 5800                                      | 2.13         |

LOWER DETECTION LIMIT: 7mW/kg



5.4 ISOTROPY

**HL1800 MHz**





6 LIST OF EQUIPMENT

| Equipment Summary Sheet            |                      |                         |   |   |
|------------------------------------|----------------------|-------------------------|---|---|
| Equipment Description              | Manufacturer / Model | Identification No.      | Current Calibration Date                      | Next Calibration Date                         |
| CALIPROBE Test Bench               | Version 2            | NA                      | Validated. No cal required.                   | Validated. No cal required.                   |
| Network Analyzer                   | Rohde & Schwarz ZVM  | 100203                  | 08/2021                                       | 08/2024                                       |
| Network Analyzer                   | Agilent 8753ES       | MY40003210              | 10/2023                                       | 10/2026                                       |
| Network Analyzer – Calibration kit | HP 85033D            | 3423A08186              | 06/2021                                       | 06/2027                                       |
| Multimeter                         | Keithley 2000        | 1160271                 | 02/2023                                       | 02/2026                                       |
| Signal Generator                   | Rohde & Schwarz SMB  | 106589                  | 03/2022                                       | 03/2025                                       |
| Amplifier                          | MVG                  | MODU-023-C-0002         | Characterized prior to test. No cal required. | Characterized prior to test. No cal required. |
| Power Meter                        | NI-USB 5680          | 170100013               | 06/2024                                       | 06/2027                                       |
| Power Meter                        | Rohde & Schwarz NRVD | 832839-056              | 11/2023                                       | 11/2026                                       |
| Directional Coupler                | Krytar 158020        | 131467                  | Characterized prior to test. No cal required. | Characterized prior to test. No cal required. |
| Waveguide                          | MVG                  | SN 32/16 WG4_1          | Validated. No cal required.                   | Validated. No cal required.                   |
| Liquid transition                  | MVG                  | SN 32/16 WGLIQ_0G900_1  | Validated. No cal required.                   | Validated. No cal required.                   |
| Waveguide                          | MVG                  | SN 32/16 WG6_1          | Validated. No cal required.                   | Validated. No cal required.                   |
| Liquid transition                  | MVG                  | SN 32/16 WGLIQ_1G500_1  | Validated. No cal required.                   | Validated. No cal required.                   |
| Waveguide                          | MVG                  | SN 32/16 WG8_1          | Validated. No cal required.                   | Validated. No cal required.                   |
| Liquid transition                  | MVG                  | SN 32/16 WGLIQ_1G800B_1 | Validated. No cal required.                   | Validated. No cal required.                   |
| Liquid transition                  | MVG                  | SN 32/16 WGLIQ_1G800H_1 | Validated. No cal required.                   | Validated. No cal required.                   |
| Waveguide                          | MVG                  | SN 32/16 WG10_1         | Validated. No cal required.                   | Validated. No cal required.                   |
| Liquid transition                  | MVG                  | SN 32/16 WGLIQ_3G500_1  | Validated. No cal required.                   | Validated. No cal required.                   |
| Waveguide                          | MVG                  | SN 32/16 WG12_1         | Validated. No cal required.                   | Validated. No cal required.                   |

Page: 10/11

Template ACR.DDD.N.YY.MVGB.ISSUE COMOSAR Probe vK

This document shall not be reproduced, except in full or in part, without the written approval of MVG. The information contained herein is to be used only for the purpose for which it is submitted and is not to be released in whole or part without written approval of MVG.





COMOSAR E-FIELD PROBE CALIBRATION REPORT

Ref: ACR.180.7.22.BES.B

|                                  |              |                           |                                |                                |
|----------------------------------|--------------|---------------------------|--------------------------------|--------------------------------|
| Liquid transition                | MVG          | SN 32/16<br>WGLIQ_5G000_1 | Validated. No cal<br>required. | Validated. No cal<br>required. |
| Temperature / Humidity<br>Sensor | Testo 184 H1 | 44225320                  | 06/2024                        | 06/2027                        |



## Dielectric Probe Calibration Report

Ref : ACR.138.4.33.SATU.A

**SHENZHEN TONGCE TESTING LAB**  
**2101&2201, ZHENCHANG FACTORY, RENSHAN**  
**INDUSTRIAL ZONE, FUHAI SUBDISTRICT, BAOAN**  
**DISTRICT, SHENZHEN, GUANGDONG, 518103,**  
**PEOPLES REPUBLIC OF CHINA**  
**MVG COMOSAR DOSIMETRIC E-FIELD PROBE**

**FREQUENCY: 0.3-6 GHZ**  
**SERIAL NO.: SN 19/15 OCPG 71**

**Calibrated at MVG US**  
**2105 Barrett Park Dr. - Kennesaw, GA 30144**



**Calibration Date: 06/05/2024**

*Summary:*

This document presents the method and results from an accredited Dielectric Probe calibration performed in MVG USA using the LIMESAR test bench. All calibration results are traceable to national metrology institutions.



SAR DIELECTRIC PROBE CALIBRATION REPORT

Ref: ACR.138.4.33..SATU.A

|                      | <i>Name</i>   | <i>Function</i> | <i>Date</i> | <i>Signature</i>   |
|----------------------|---------------|-----------------|-------------|--------------------|
| <i>Prepared by :</i> | Jérôme LUC    | Product Manager | 06/05/2024  | <i>[Signature]</i> |
| <i>Checked by :</i>  | Jérôme LUC    | Product Manager | 06/05/2024  | <i>[Signature]</i> |
| <i>Approved by :</i> | Kim RUTKOWSKI | Quality Manager | 06/05/2024  | <i>[Signature]</i> |

|                       | <i>Customer Name</i>        |
|-----------------------|-----------------------------|
| <i>Distribution :</i> | SHENZHEN TONGCE TESTING LAB |

| <i>Issue</i> | <i>Date</i> | <i>Modifications</i> |
|--------------|-------------|----------------------|
| A            | 06/05/2024  | Initial release      |
|              |             |                      |
|              |             |                      |



TABLE OF CONTENTS

|     |   |   |
|-----|---|---|
| 1   | Introduction.....                         | 4 |
| 2   | Device Under Test .....                   | 4 |
| 3   | Product Description .....                 | 4 |
| 3.1 | General Information .....                 | 4 |
| 4   | Measurement Method .....                  | 5 |
| 4.1 | Liquid Permittivity Measurements .....    | 5 |
| 5   | Measurement Uncertainty .....             | 5 |
| 5.1 | Dielectric Permittivity Measurement ..... | 5 |
| 6   | Calibration Measurement Results .....     | 6 |
| 6.1 | Liquid Permittivity Measurement .....     | 6 |
| 7   | List of Equipment .....                   | 7 |



**1 INTRODUCTION**

This document contains a summary of the suggested methods and requirements set forth by the IEEE 1528 and CEI/IEC 62209 standards for liquid permittivity measurements and the measurements that were performed to verify that the product complies with the fore mentioned standards.

**2 DEVICE UNDER TEST**

| Device Under Test              |                          |
|--------------------------------|--------------------------|
| Device Type                    | LIMESAR DIELECTRIC PROBE |
| Manufacturer                   | MVG                      |
| Model                          | SCLMP                    |
| Serial Number                  | SN 19/15 OCPG 71         |
| Product Condition (new / used) | Used                     |

A yearly calibration interval is recommended.

**3 PRODUCT DESCRIPTION**

**3.1 GENERAL INFORMATION**

MVG's Dielectric Probes are built in accordance to the IEEE 1528 and CEI/IEC 62209 standards. The product is designed for use with the LIMESAR test bench only.



**Figure 1 – MVG LIMESAR Dielectric Probe**



**4 MEASUREMENT METHOD**

The IEEE 1528, OET 65 Bulletin C and CEI/IEC 62209-1 & 2 standards outline techniques for dielectric property measurements. The LIMESAR test bench employs one of the methods outlined in the standards, using a contact probe or open-ended coaxial transmission-line probe and vector network analyzer. The standards recommend the measurement of two reference materials that have well established and stable dielectric properties to validate the system, one for the calibration and one for checking the calibration. The LIMESAR test bench uses De-ionized water as the reference for the calibration and either DMS or Methanol as the reference for checking the calibration. The following measurements were performed to verify that the product complies with the fore mentioned standards.

**4.1 LIQUID PERMITTIVITY MEASUREMENTS**

The permittivity of a liquid with well established dielectric properties was measured and the measurement results compared to the values provided in the fore mentioned standards.

**5 MEASUREMENT UNCERTAINTY**

All uncertainties listed below represent an expanded uncertainty expressed at approximately the 95% confidence level using a coverage factor of k=2, traceable to the Internationally Accepted Guides to Measurement Uncertainty.

**5.1 DIELECTRIC PERMITTIVITY MEASUREMENT**

The following uncertainties apply to the Dielectric Permittivity measurement:

| Uncertainty analysis of Permittivity Measurement             |                          |                          |            |    |                             |
|--|--------------------------|--------------------------|------------|----|-----------------------------|
| ERROR SOURCES  | Uncertainty value (+/-%) | Probability Distribution | Divisor    | ci | Standard Uncertainty (+/-%) |
| Repeatability (n repeats, mid-band)                          | 4.00%                    | N                        | 1          | 1  | 4.000%                      |
| Deviation from reference liquid                              | 5.00%                    | R                        | $\sqrt{3}$ | 1  | 2.887%                      |
| Network analyser-drift, linearity                            | 2.00%                    | R                        | $\sqrt{3}$ | 1  | 1.155%                      |
| Test-port cable variations                                   | 0.00%                    | U                        | $\sqrt{2}$ | 1  | 0.000%                      |
| <b>Combined standard uncertainty</b>                         |                          |                          |            |    | 5.066%                      |
| <b>Expanded uncertainty (confidence level of 95%, k = 2)</b> |                          |                          |            |    | 10.0%                       |

| Uncertainty analysis of Conductivity Measurement             |                          |                          |            |    |                             |
|--|--------------------------|--------------------------|------------|----|-----------------------------|
| ERROR SOURCES  | Uncertainty value (+/-%) | Probability Distribution | Divisor    | ci | Standard Uncertainty (+/-%) |
| Repeatability (n repeats, mid-band)                          | 3.50%                    | N                        | 1          | 1  | 3.500%                      |
| Deviation from reference liquid                              | 3.00%                    | R                        | $\sqrt{3}$ | 1  | 1.732%                      |
| Network analyser-drift, linearity                            | 2.00%                    | R                        | $\sqrt{3}$ | 1  | 1.155%                      |
| Test-port cable variations                                   | 0.00%                    | U                        | $\sqrt{2}$ | 1  | 0.000%                      |
| <b>Combined standard uncertainty</b>                         |                          |                          |            |    | 4.072%                      |
| <b>Expanded uncertainty (confidence level of 95%, k = 2)</b> |                          |                          |            |    | 8.1%                        |



SAR DIELECTRIC PROBE CALIBRATION REPORT

Ref: ACR.138.4.33..SATU.A

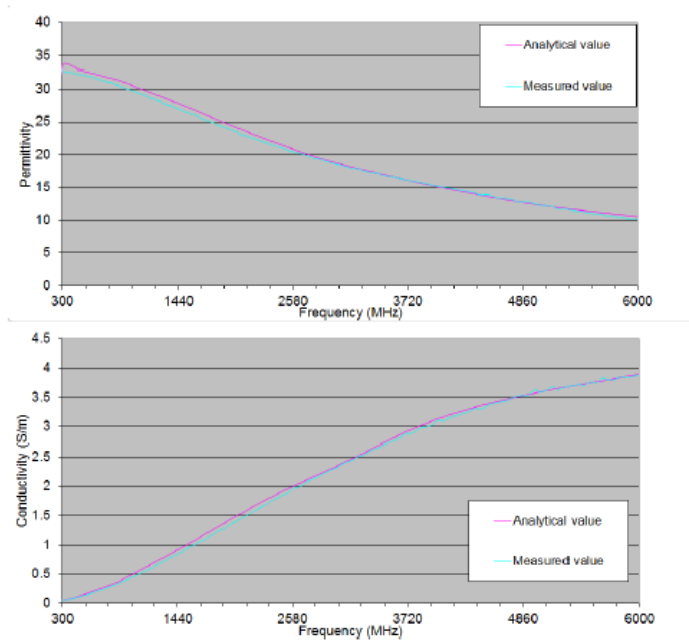
6 CALIBRATION MEASUREMENT RESULTS

Measurement Condition

|                    |         |
|--------------------|---------|
| Software           | LIMESAR |
| Liquid Temperature | 21°C    |
| Lab Temperature    | 21°C    |
| Lab Humidity       | 44%     |

6.1 LIQUID PERMITTIVITY MEASUREMENT

A liquid of known characteristics (methanol at 20°C) is measured with the probe and the results (complex permittivity  $\epsilon' + j\epsilon''$ ) are compared with the well-known theoretical values for this liquid.





7 LIST OF EQUIPMENT

| Equipment Summary Sheet         |                      |                    |                             |                             |
|---------------------------------|----------------------|--------------------|-----------------------------|-----------------------------|
| Equipment Description           | Manufacturer / Model | Identification No. | Current Calibration Date    | Next Calibration Date       |
| LIMESAR Test Bench              | Version 3            | NA                 | Validated. No cal required. | Validated. No cal required. |
| Network Analyzer                | Rhode & Schwarz ZVA  | SN100132           | 02/2024                     | 02/2027                     |
| Methanol CAS 67-56-1            | Alpha Aesar          | Lot D13W011        | Validated. No cal required. | Validated. No cal required. |
| Temperature and Humidity Sensor | Control Company      | 11-661-9           | 09/2023                     | 09/2024                     |



## Appendix D: Dipole Calibration Report

SID2450



### SAR Reference Dipole Calibration Report

Ref : ACR.156.9.15.SATU.A

#### SHENZHEN TONGCE TESTING LAB

2101&2201, ZHENCHANG FACTORY, RENSHAN INDUSTRIAL  
FUHAI SUBDISTRICT, BAOAN DISTRICT, SHENZHEN,  
GUANGDONG, 518103, PEOPLES REPUBLIC OF CHINA

#### MVG COMOSAR REFERENCE DIPOLE

FREQUENCY: 2450 MHZ

SERIAL NO.: SN 16/15 DIP 2G450-374

Calibrated at MVG US

2105 Barrett Park Dr. - Kennesaw, GA 30144



Calibration Date: 06/05/2024

#### Summary:

This document presents the method and results from an accredited SAR reference dipole calibration performed in MVG USA using the COMOSAR test bench. All calibration results are traceable to national metrology institutions.



SAR REFERENCE DIPOLE CALIBRATION REPORT

Ref: ACR.156.9.15.SATU.A

|                      | <i>Name</i>   | <i>Function</i> | <i>Date</i> | <i>Signature</i>     |
|----------------------|---------------|-----------------|-------------|----------------------|
| <i>Prepared by :</i> | Jérôme LUC    | Product Manager | 06/05/2024  | <i>Jes</i>           |
| <i>Checked by :</i>  | Jérôme LUC    | Product Manager | 06/05/2024  | <i>Jes</i>           |
| <i>Approved by :</i> | Kim RUTKOWSKI | Quality Manager | 06/05/2024  | <i>Kim Rutkowski</i> |

|                       | <i>Customer Name</i>        |
|-----------------------|-----------------------------|
| <i>Distribution :</i> | SHENZHEN TONGCE TESTING LAB |

| <i>Issue</i> | <i>Date</i> | <i>Modifications</i> |
|--------------|-------------|----------------------|
| A            | 06/05/2024  | Initial release      |
|              |             |                      |
|              |             |                      |



TABLE OF CONTENTS

|     |  |    |
|-----|--|----|
| 1   | Introduction.....                              | 4  |
| 2   | Device Under Test .....                        | 4  |
| 3   | Product Description .....                      | 4  |
| 3.1 | General Information .....                      | 4  |
| 4   | Measurement Method .....                       | 5  |
| 4.1 | Return Loss Requirements .....                 | 5  |
| 4.2 | Mechanical Requirements .....                  | 5  |
| 5   | Measurement Uncertainty .....                  | 5  |
| 5.1 | Return Loss .....                              | 5  |
| 5.2 | Dimension Measurement .....                    | 5  |
| 5.3 | Validation Measurement .....                   | 5  |
| 6   | Calibration Measurement Results .....          | 6  |
| 6.1 | Return Loss and Impedance In Head Liquid ..... | 6  |
| 6.2 | Return Loss and Impedance In Body Liquid ..... | 6  |
| 6.3 | Mechanical Dimensions .....                    | 6  |
| 7   | Validation measurement .....                   | 7  |
| 7.1 | Head Liquid Measurement .....                  | 7  |
| 7.2 | SAR Measurement Result With Head Liquid .....  | 8  |
| 7.3 | Body Liquid Measurement .....                  | 9  |
| 7.4 | SAR Measurement Result With Body Liquid .....  | 10 |
| 8   | List of Equipment .....                        | 11 |



**1 INTRODUCTION**

This document contains a summary of the requirements set forth by the IEEE 1528, FCC KDBs and CEI/IEC 62209 standards for reference dipoles used for SAR measurement system validations and the measurements that were performed to verify that the product complies with the fore mentioned standards.

**2 DEVICE UNDER TEST**

| Device Under Test              |                                   |
|--------------------------------|-----------------------------------|
| Device Type                    | COMOSAR 2450 MHz REFERENCE DIPOLE |
| Manufacturer                   | MVG                               |
| Model                          | SID2450                           |
| Serial Number                  | SN 16/15 DIP 2G450-374            |
| Product Condition (new / used) | Used                              |

A yearly calibration interval is recommended.

**3 PRODUCT DESCRIPTION**

**3.1 GENERAL INFORMATION**

MVG's COMOSAR Validation Dipoles are built in accordance to the IEEE 1528, FCC KDBs and CEI/IEC 62209 standards. The product is designed for use with the COMOSAR test bench only.



**Figure 1 – MVG COMOSAR Validation Dipole**



#### 4 MEASUREMENT METHOD

The IEEE 1528, FCC KDBs and CEI/IEC 62209 standards provide requirements for reference dipoles used for system validation measurements. The following measurements were performed to verify that the product complies with the fore mentioned standards.

##### 4.1 RETURN LOSS REQUIREMENTS

The dipole used for SAR system validation measurements and checks must have a return loss of -20 dB or better. The return loss measurement shall be performed against a liquid filled flat phantom, with the phantom constructed as outlined in the fore mentioned standards.

##### 4.2 MECHANICAL REQUIREMENTS

The IEEE Std. 1528 and CEI/IEC 62209 standards specify the mechanical components and dimensions of the validation dipoles, with the dimensions frequency and phantom shell thickness dependent. The COMOSAR test bench employs a 2 mm phantom shell thickness therefore the dipoles sold for use with the COMOSAR test bench comply with the requirements set forth for a 2 mm phantom shell thickness.

#### 5 MEASUREMENT UNCERTAINTY

All uncertainties listed below represent an expanded uncertainty expressed at approximately the 95% confidence level using a coverage factor of  $k=2$ , traceable to the Internationally Accepted Guides to Measurement Uncertainty.

##### 5.1 RETURN LOSS

The following uncertainties apply to the return loss measurement:

| Frequency band | Expanded Uncertainty on Return Loss |
|----------------|-------------------------------------|
| 400-6000MHz    | 0.1 dB                              |

##### 5.2 DIMENSION MEASUREMENT

The following uncertainties apply to the dimension measurements:

| Length (mm) | Expanded Uncertainty on Length |
|-------------|--------------------------------|
| 3 - 300     | 0.05 mm                        |

##### 5.3 VALIDATION MEASUREMENT

The guidelines outlined in the IEEE 1528, FCC KDBs, CENELEC EN50361 and CEI/IEC 62209 standards were followed to generate the measurement uncertainty for validation measurements.

| Scan Volume | Expanded Uncertainty |
|-------------|----------------------|
| 1 g         | 20.3 %               |

Page: 5/11

*This document shall not be reproduced, except in full or in part, without the written approval of MVG.  
The information contained herein is to be used only for the purpose for which it is submitted and is not to be released in whole or part without written approval of MVG.*



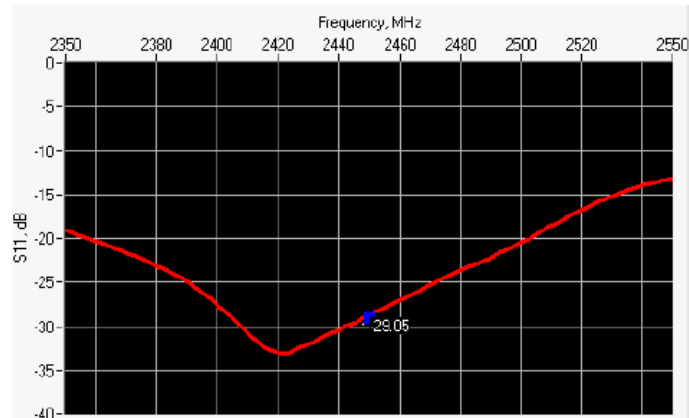
SAR REFERENCE DIPOLE CALIBRATION REPORT

Ref: ACR.156.9.15.SATUA

|      |        |
|------|--------|
| 10 g | 20.1 % |
|------|--------|

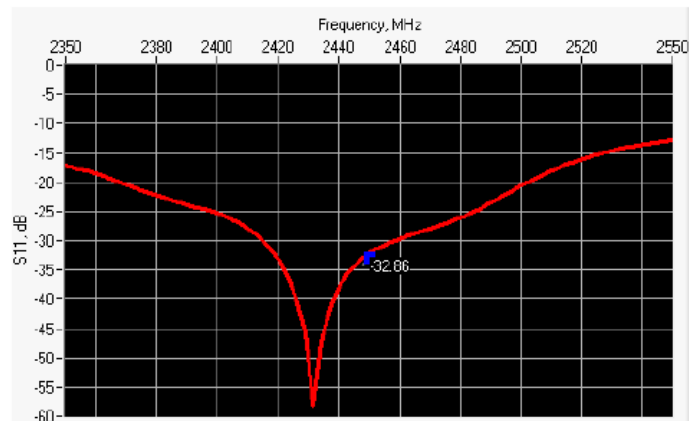
6 CALIBRATION MEASUREMENT RESULTS

6.1 RETURN LOSS AND IMPEDANCE IN HEAD LIQUID



| Frequency (MHz) | Return Loss (dB) | Requirement (dB) | Impedance       |
|-----------------|------------------|------------------|-----------------|
| 2450            | -29.05           | -20              | 46.7 Ω - 0.2 jΩ |

6.2 RETURN LOSS AND IMPEDANCE IN BODY LIQUID



| Frequency (MHz) | Return Loss (dB) | Requirement (dB) | Impedance       |
|-----------------|------------------|------------------|-----------------|
| 2450            | -32.86           | -20              | 48.6 Ω - 1.9 jΩ |

6.3 MECHANICAL DIMENSIONS

| Frequency MHz | L mm       |          | h mm       |          | d mm      |          |
|---------------|------------|----------|------------|----------|-----------|----------|
|               | required   | measured | required   | measured | required  | measured |
| 300           | 420.0 ±1 % |          | 250.0 ±1 % |          | 6.35 ±1 % |          |

Page: 6/11

*This document shall not be reproduced, except in full or in part, without the written approval of MVG. The information contained herein is to be used only for the purpose for which it is submitted and is not to be released in whole or part without written approval of MVG.*



SAR REFERENCE DIPOLE CALIBRATION REPORT

Ref: ACR.156.9.15.SATU.A

|      |             |      |             |      |            |      |
|------|-------------|------|-------------|------|------------|------|
| 450  | 290.0 ±1 %. |      | 166.7 ±1 %. |      | 6.35 ±1 %. |      |
| 750  | 176.0 ±1 %. |      | 100.0 ±1 %. |      | 6.35 ±1 %. |      |
| 835  | 161.0 ±1 %. |      | 89.8 ±1 %.  |      | 3.6 ±1 %.  |      |
| 900  | 149.0 ±1 %. |      | 83.3 ±1 %.  |      | 3.6 ±1 %.  |      |
| 1450 | 89.1 ±1 %.  |      | 51.7 ±1 %.  |      | 3.6 ±1 %.  |      |
| 1500 | 80.5 ±1 %.  |      | 50.0 ±1 %.  |      | 3.6 ±1 %.  |      |
| 1640 | 79.0 ±1 %.  |      | 45.7 ±1 %.  |      | 3.6 ±1 %.  |      |
| 1750 | 75.2 ±1 %.  |      | 42.9 ±1 %.  |      | 3.6 ±1 %.  |      |
| 1800 | 72.0 ±1 %.  |      | 41.7 ±1 %.  |      | 3.6 ±1 %.  |      |
| 1900 | 68.0 ±1 %.  |      | 39.5 ±1 %.  |      | 3.6 ±1 %.  |      |
| 1950 | 66.3 ±1 %.  |      | 38.5 ±1 %.  |      | 3.6 ±1 %.  |      |
| 2000 | 64.5 ±1 %.  |      | 37.5 ±1 %.  |      | 3.6 ±1 %.  |      |
| 2100 | 61.0 ±1 %.  |      | 35.7 ±1 %.  |      | 3.6 ±1 %.  |      |
| 2300 | 55.5 ±1 %.  |      | 32.6 ±1 %.  |      | 3.6 ±1 %.  |      |
| 2450 | 51.5 ±1 %.  | PASS | 30.4 ±1 %.  | PASS | 3.6 ±1 %.  | PASS |
| 2600 | 48.5 ±1 %.  |      | 28.8 ±1 %.  |      | 3.6 ±1 %.  |      |
| 3000 | 41.5 ±1 %.  |      | 25.0 ±1 %.  |      | 3.6 ±1 %.  |      |
| 3500 | 37.0 ±1 %.  |      | 26.4 ±1 %.  |      | 3.6 ±1 %.  |      |
| 3700 | 34.7 ±1 %.  |      | 26.4 ±1 %.  |      | 3.6 ±1 %.  |      |

7 VALIDATION MEASUREMENT

The IEEE Std. 1528, FCC KDBs and CEI/IEC 62209 standards state that the system validation measurements must be performed using a reference dipole meeting the fore mentioned return loss and mechanical dimension requirements. The validation measurement must be performed against a liquid filled flat phantom, with the phantom constructed as outlined in the fore mentioned standards. Per the standards, the dipole shall be positioned below the bottom of the phantom, with the dipole length centered and parallel to the longest dimension of the flat phantom, with the top surface of the dipole at the described distance from the bottom surface of the phantom.

7.1 HEAD LIQUID MEASUREMENT

| Frequency MHz | Relative permittivity ( $\epsilon_r'$ ) |          | Conductivity ( $\sigma$ ) S/m |          |
|---------------|---|----------|-------------------------------|----------|
|               | required                                | measured | required                      | measured |
| 300           | 45.3 ±5 %                               |          | 0.87 ±5 %                     |          |
| 450           | 43.5 ±5 %                               |          | 0.87 ±5 %                     |          |
| 750           | 41.9 ±5 %                               |          | 0.89 ±5 %                     |          |
| 835           | 41.5 ±5 %                               |          | 0.90 ±5 %                     |          |
| 900           | 41.5 ±5 %                               |          | 0.97 ±5 %                     |          |
| 1450          | 40.5 ±5 %                               |          | 1.20 ±5 %                     |          |
| 1500          | 40.4 ±5 %                               |          | 1.23 ±5 %                     |          |
| 1640          | 40.2 ±5 %                               |          | 1.31 ±5 %                     |          |
| 1750          | 40.1 ±5 %                               |          | 1.37 ±5 %                     |          |

Page: 7/11

*This document shall not be reproduced, except in full or in part, without the written approval of MVG. The information contained herein is to be used only for the purpose for which it is submitted and is not to be released in whole or part without written approval of MVG.*



SAR REFERENCE DIPOLE CALIBRATION REPORT

Ref: ACR.156.9.15.SATU.A

|      |           |      |           |      |
|------|-----------|------|-----------|------|
| 1800 | 40.0 ±5 % |      | 1.40 ±5 % |      |
| 1900 | 40.0 ±5 % |      | 1.40 ±5 % |      |
| 1950 | 40.0 ±5 % |      | 1.40 ±5 % |      |
| 2000 | 40.0 ±5 % |      | 1.40 ±5 % |      |
| 2100 | 39.8 ±5 % |      | 1.49 ±5 % |      |
| 2300 | 39.5 ±5 % |      | 1.67 ±5 % |      |
| 2450 | 39.2 ±5 % | PASS | 1.80 ±5 % | PASS |
| 2600 | 39.0 ±5 % |      | 1.96 ±5 % |      |
| 3000 | 38.5 ±5 % |      | 2.40 ±5 % |      |
| 3500 | 37.9 ±5 % |      | 2.91 ±5 % |      |

7.2 SAR MEASUREMENT RESULT WITH HEAD LIQUID

The IEEE Std. 1528 and CEI/IEC 62209 standards state that the system validation measurements should produce the SAR values shown below (for phantom thickness of 2 mm), within the uncertainty for the system validation. All SAR values are normalized to 1 W forward power. In bracket, the measured SAR is given with the used input power.

|   |  |
|---|--|
| Software                                  | OPENSAR V4                                   |
| Phantom                                   | SN 20/09 SAM71                               |
| Probe                                     | SN 18/11 EPG122                              |
| Liquid                                    | Head Liquid Values: eps' : 38.3 sigma : 1.80 |
| Distance between dipole center and liquid | 10.0 mm                                      |
| Area scan resolution                      | dx=8mm/dy=8mm                                |
| Zoon Scan Resolution                      | dx=5mm/dy=5mm/dz=5mm                         |
| Frequency                                 | 2450 MHz                                     |
| Input power                               | 20 dBm                                       |
| Liquid Temperature                        | 21 °C  |
| Lab Temperature                           | 21 °C  |
| Lab Humidity                              | 45 %   |

| Frequency MHz | 1 g SAR (W/kg/W) |          | 10 g SAR (W/kg/W) |          |
|---------------|------------------|----------|-------------------|----------|
|               | required         | measured | required          | measured |
| 300           | 2.85             |          | 1.94              |          |
| 450           | 4.58             |          | 3.06              |          |
| 750           | 8.49             |          | 5.55              |          |
| 835           | 9.56             |          | 6.22              |          |
| 900           | 10.9             |          | 6.99              |          |
| 1450          | 29               |          | 16                |          |
| 1500          | 30.5             |          | 16.8              |          |
| 1640          | 34.2             |          | 18.4              |          |
| 1750          | 36.4             |          | 19.3              |          |
| 1800          | 38.4             |          | 20.1              |          |

Page: 8/11

*This document shall not be reproduced, except in full or in part, without the written approval of MVG. The information contained herein is to be used only for the purpose for which it is submitted and is not to be released in whole or part without written approval of MVG.*

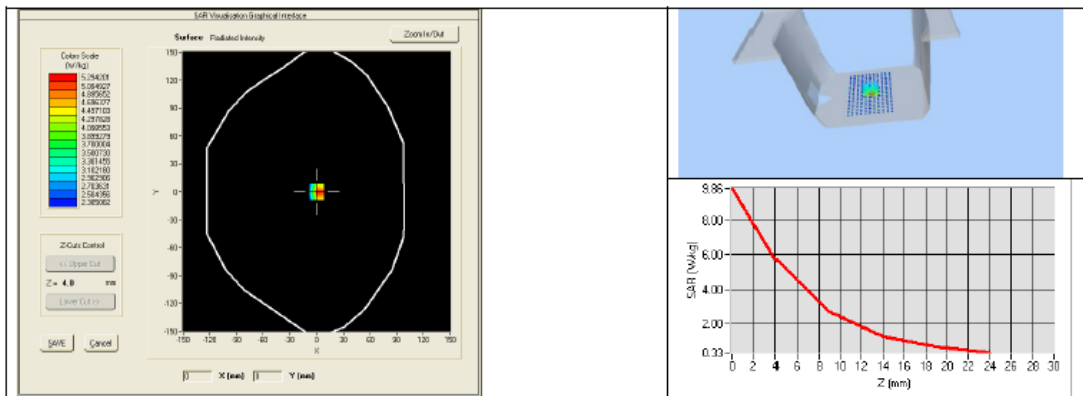




SAR REFERENCE DIPOLE CALIBRATION REPORT

Ref: ACR.156.9.15.SATU.A

|      |      |              |      |              |
|------|------|--------------|------|--------------|
| 1900 | 39.7 |              | 20.5 |              |
| 1950 | 40.5 |              | 20.9 |              |
| 2000 | 41.1 |              | 21.1 |              |
| 2100 | 43.6 |              | 21.9 |              |
| 2300 | 48.7 |              | 23.3 |              |
| 2450 | 52.4 | 53.26 (5.38) | 24   | 24.15 (2.49) |
| 2600 | 55.3 |              | 24.6 |              |
| 3000 | 63.8 |              | 25.7 |              |
| 3500 | 67.1 |              | 25   |              |



7.3 BODY LIQUID MEASUREMENT

| Frequency<br>MHz | Relative permittivity ( $\epsilon_r'$ ) |          | Conductivity ( $\sigma$ ) S/m |          |
|------------------|---|----------|-------------------------------|----------|
|                  | required                                | measured | required                      | measured |
| 150              | 61.9 ±5 %                               |          | 0.80 ±5 %                     |          |
| 300              | 58.2 ±5 %                               |          | 0.92 ±5 %                     |          |
| 450              | 56.7 ±5 %                               |          | 0.94 ±5 %                     |          |
| 750              | 55.5 ±5 %                               |          | 0.96 ±5 %                     |          |
| 835              | 55.2 ±5 %                               |          | 0.97 ±5 %                     |          |
| 900              | 55.0 ±5 %                               |          | 1.05 ±5 %                     |          |
| 915              | 55.0 ±5 %                               |          | 1.06 ±5 %                     |          |
| 1450             | 54.0 ±5 %                               |          | 1.30 ±5 %                     |          |
| 1610             | 53.8 ±5 %                               |          | 1.40 ±5 %                     |          |
| 1800             | 53.3 ±5 %                               |          | 1.52 ±5 %                     |          |
| 1900             | 53.3 ±5 %                               |          | 1.52 ±5 %                     |          |
| 2000             | 53.3 ±5 %                               |          | 1.52 ±5 %                     |          |
| 2100             | 53.2 ±5 %                               |          | 1.62 ±5 %                     |          |
| 2450             | 52.7 ±5 %                               | PASS     | 1.95 ±5 %                     | PASS     |

Page: 9/11

*This document shall not be reproduced, except in full or in part, without the written approval of MVG. The information contained herein is to be used only for the purpose for which it is submitted and is not to be released in whole or part without written approval of MVG.*



SAR REFERENCE DIPOLE CALIBRATION REPORT

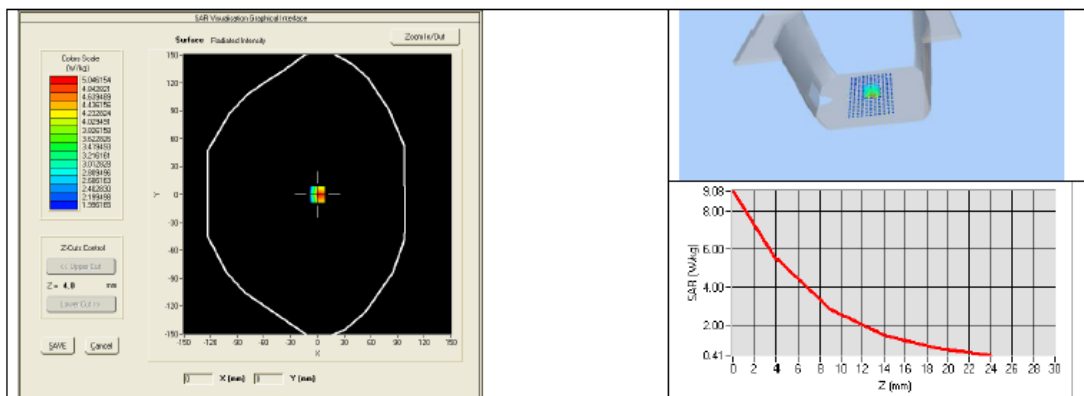
Ref: ACR.156.9.15.SATU.A

|      |            |  |            |  |
|------|------------|--|------------|--|
| 2600 | 52.5 ±5 %  |  | 2.16 ±5 %  |  |
| 3000 | 52.0 ±5 %  |  | 2.73 ±5 %  |  |
| 3500 | 51.3 ±5 %  |  | 3.31 ±5 %  |  |
| 5200 | 49.0 ±10 % |  | 5.30 ±10 % |  |
| 5300 | 48.9 ±10 % |  | 5.42 ±10 % |  |
| 5400 | 48.7 ±10 % |  | 5.53 ±10 % |  |
| 5500 | 48.6 ±10 % |  | 5.65 ±10 % |  |
| 5600 | 48.5 ±10 % |  | 5.77 ±10 % |  |
| 5800 | 48.2 ±10 % |  | 6.00 ±10 % |  |

7.4 SAR MEASUREMENT RESULT WITH BODY LIQUID

|   |  |
|---|--|
| Software                                  | OPENSAR V4                                   |
| Phantom                                   | SN 20/09 SAM71                               |
| Probe                                     | SN 18/11 EPG122                              |
| Liquid                                    | Body Liquid Values: eps' : 52.7 sigma : 1.94 |
| Distance between dipole center and liquid | 10.0 mm                                      |
| Area scan resolution                      | dx=8mm/dy=8mm                                |
| Zoon Scan Resolution                      | dx=5mm/dy=5mm/dz=5mm                         |
| Frequency                                 | 2450 MHz                                     |
| Input power                               | 20 dBm                                       |
| Liquid Temperature                        | 21 °C  |
| Lab Temperature                           | 21 °C  |
| Lab Humidity                              | 45 %   |

| Frequency MHz | 1 g SAR (W/kg/W) | 10 g SAR (W/kg/W) |
|---------------|------------------|-------------------|
|               | measured         | measured          |
| 2450          | 50.63 (5.01)     | 23.40 (2.37)      |



This document shall not be reproduced, except in full or in part, without the written approval of MVG. The information contained herein is to be used only for the purpose for which it is submitted and is not to be released in whole or part without written approval of MVG.



**8 LIST OF EQUIPMENT**

| Equipment Summary Sheet         |                      |                    |   |   |
|---------------------------------|----------------------|--------------------|---|---|
| Equipment Description           | Manufacturer / Model | Identification No. | Current Calibration Date                      | Next Calibration Date                         |
| SAM Phantom                     | MVG                  | SN-20/09-SAM71     | Validated. No cal required.                   | Validated. No cal required.                   |
| COMOSAR Test Bench              | Version 3            | NA                 | Validated. No cal required.                   | Validated. No cal required.                   |
| Network Analyzer                | Rhode & Schwarz ZVA  | SN100132           | 02/2024                                       | 02/2027                                       |
| Calipers                        | Carrera              | CALIPER-01         | 02/2024                                       | 02/2027                                       |
| Reference Probe                 | MVG                  | EPG122 SN 18/11    | 02/2024                                       | 02/2025                                       |
| Multimeter                      | Keithley 2000        | 1188656            | 02/2024                                       | 02/2027                                       |
| Signal Generator                | Agilent E4438C       | MY49070581         | 02/2024                                       | 02/2027                                       |
| Amplifier                       | Aethercomm           | SN 046             | Characterized prior to test. No cal required. | Characterized prior to test. No cal required. |
| Power Meter                     | HP E4418A            | US38261498         | 02/2024                                       | 02/2027                                       |
| Power Sensor                    | HP ECP-E26A          | US37181460         | 02/2024                                       | 02/2027                                       |
| Directional Coupler             | Narda 4216-20        | 01386              | Characterized prior to test. No cal required. | Characterized prior to test. No cal required. |
| Temperature and Humidity Sensor | Control Company      | 11-661-9           | 02/2024                                       | 02/2027                                       |

## Appendix E: SAR SYSTEM VALIDATION

Per FCC KDB 865664 D02v01, SAR system validation status should be documented to confirm measurement accuracy. The SAR systems (including SAR probes, system components and software versions) used for this device were validated against its performance specifications prior to the SAR measurements. Reference dipoles were used with the required tissue-equivalent media for system validation, according to the procedures outlined in FCC KDB 865664 D01 v01 and IEEE 1528-2013. Since SAR probe calibrations are frequency dependent, each probe calibration point was validated at a frequency within the valid frequency range of the probe calibration point, using the system that normally operates with the probe for routine SAR measurements and according to the required tissue-equivalent media.

A tabulated summary of the system validation status including the validation date(s), measurement frequencies, SAR probes and tissue dielectric parameters has been included.

**SAR System Validation Summary**

| Date       | Freq. [MHz] | Probe S/N         | Tissue type | COND. PERM.  | COND. PERM.    | CW Validation |                 |                | Mod. Validation |             |                             |
|------------|-------------|-------------------|-------------|--------------|----------------|---------------|-----------------|----------------|-----------------|-------------|-----------------------------|
|            |             |                   |             | ( $\sigma$ ) | ( $\epsilon$ ) | sensitivity   | Probe linearity | Probe isotropy | Mod. type       | Duty factor | Peak to average power ratio |
| 01/02/2024 | 2450        | SN 25/22 EPGO 375 | Head        | 38.99        | 1.88           | PASS          | PASS            | PASS           | OFDM            | PASS        | N/A                         |
| 01/02/2024 | 5G          | SN 25/22 EPGO 375 | Head        | 36.68        | 4.45 ~ 5.08    | PASS          | PASS            | PASS           | OFDM            | PASS        | N/A                         |

NOTE: While the probes have been calibrated for both a CW and modulated signals, all measurements were performed using communication systems calibrated for CW signals only. Modulations in the table above represent test configurations for which the measurement system has been validated per FCC KDB Publication 865664 D01v01 for scenarios when CW probe calibrations are used with other signal types. SAR systems were validated for modulated signals with a periodic duty cycle, such as OFDM according to KDB 865664.

## Appendix F: The Check Data of Impedance and Return Loss

The information are included in the SAR report to qualify for the three-year extended calibration interval;

| Impedance in body liquid |           |                        |        |                            |                        |        | Date: 01/02/2024           |
|--------------------------|-----------|------------------------|--------|----------------------------|------------------------|--------|----------------------------|
| Freq. (MHz)              | Temp (°C) | Dipole Impedance Re(z) |        |                            | Dipole Impedance Im(z) |        |                            |
|                          |           | measured               | Target | $\Delta$ ( $\pm 5\Omega$ ) | measured               | Target | $\Delta$ ( $\pm 5\Omega$ ) |
| 2450                     | 22        | 45.90                  | 46.50  | -0.60                      | -0.36                  | -0.20  | -0.16                      |
| 5G                       | 22        | 49.02                  | 50.01  | -0.99                      | 5.52                   | 5.70   | -0.18                      |

| Return loss in Head liquid |           |                 |        |                         | Date: 01/02/2024 |
|----------------------------|-----------|-----------------|--------|-------------------------|------------------|
| Freq. (MHz)                | Temp (°C) | Return loss(dB) |        |                         |                  |
|                            |           | measured        | Target | $\Delta$ ( $\pm 20\%$ ) |                  |
| 2450                       | 22        | -30.95          | -29.05 | 6.54                    |                  |
| 5G                         | 22        | -21.87          | -22.80 | 0.93                    |                  |

| liquid | Freq. (MHz) | Temp (°C) | $\epsilon_r$ / relative permittivity |        |                        | $\sigma$ (s/m) / conductivity |        |                        | $\rho$ (kg/m <sup>3</sup> ) |
|--------|-------------|-----------|--------------------------------------|--------|------------------------|-------------------------------|--------|------------------------|-----------------------------|
|        |             |           | measured                             | Target | $\Delta$ ( $\pm 5\%$ ) | measured                      | Target | $\Delta$ ( $\pm 5\%$ ) |                             |
| Head   | 2450        | 22        | 38.99                                | 39.20  | -0.54                  | 1.88                          | 1.80   | 4.44                   | 1000                        |
|        | 5G          | 22        | 36.06                                | 35.30  | 0.76                   | 4.44                          | 5.27   | -0.83                  | 1000                        |

| Test Equipment                | Manufacturer    | Model           | Serial Number | Calibration              |                         |
|-------------------------------|-----------------|-----------------|---------------|--------------------------|-------------------------|
|                               |                 |                 |               | Calibration Date (D.M.Y) | Calibration Due (D.M.Y) |
| Signal Generator              | Agilent         | N5182A          | MY47070282    | Jun. 27, 2024            | Jun. 26, 2025           |
| Multimeter                    | Keithley        | Multimeter 2000 | 4078275       | Jun. 27, 2024            | Jun. 26, 2025           |
| Network Analyzer              | Agilent         | 8753E           | US38432457    | Jun. 27, 2024            | Jun. 26, 2025           |
| Power Meter                   | Agilent         | E4418B          | GB43312526    | Jun. 27, 2024            | Jun. 26, 2025           |
| Power Sensor                  | Agilent         | E9301A          | MY41497725    | Jun. 27, 2024            | Jun. 26, 2025           |
| Power Amplifier               | PE              | PE15A4019       | 112342        | N/A                      | N/A                     |
| Temperature / Humidity Sensor | Control company | TH101B          | 152470214     | Jun. 27, 2024            | Jun. 26, 2025           |

\*\*\*\*\*END OF REPORT\*\*\*\*\*