

TKSR6

Antenna Specification

1. Application:

This application shall apply for antenna unit which shall be used such as automotive, conventional communications, smart home, etc..

1. Electrical Specification:

Those specifications were specially defined for customer's model, and all characteristics were measured under the model's handset testing jig .

2-1. Frequency Band:

Frequency Band	MHz
WIFI/BT/GPS	2400-2500

2-2. Impedance

50 ohm nominal

2-3. VSWR

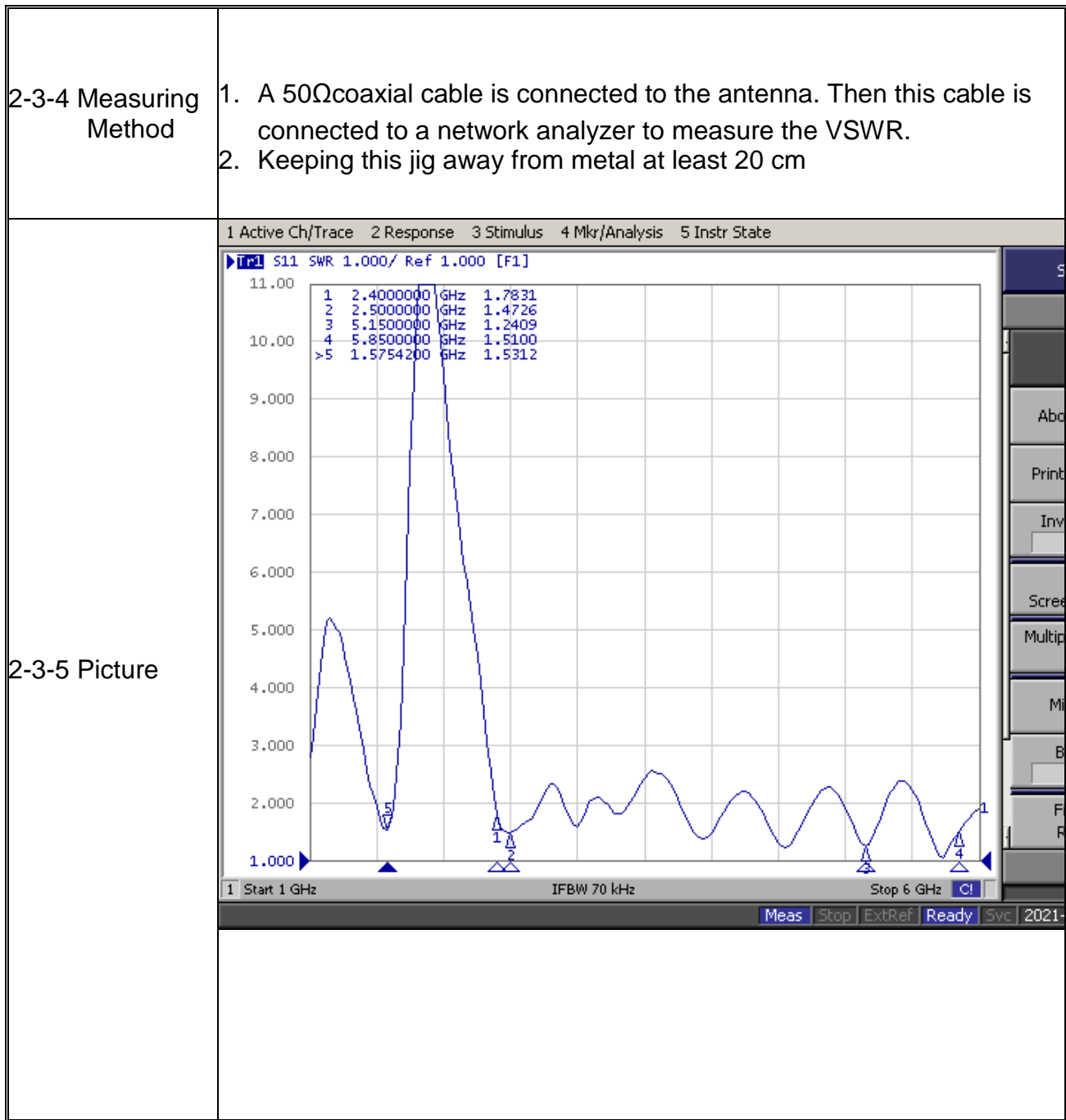
2-3-1.Measurement frequency points and VSWR value

Frequency Band(MHz)	1575.42	2400	2500
2-3-3. Typical Value:	1.78	1.47	1.24

2-3-2. VSWR

Frequency Band(MHz)	1575.42	2400	2500
2-3-3. Typical Value:	≤2	≤2	≤2

UNLESS OTHER SPECIFIED TOLERANCES ON :			
X = ±	X.X = ±	X.XX = ±	
ANGLES = ±		HOLEDIA = ±	
SCALE :	UNIT : mm	THIS DRAWINGS AND SPECIFICATIONS ARE THE PROPERTY OF TOXU TECHNOLOGY CO.,LTD.AND SHALL NOT BE REPRODUCED OR USED AS THE BASIS FOR THE MANUFACTURE OR SALE OF APPARATUS OR DEVICES WITHOUT PERMISSION	
DRAWN BY: LI	CHECKED BY: YS		
DESIGNED BY: De wen	APPROVED BY: YS		
TITLE : KC.IA.00267 Antenna Specification			SPEC REV. P0



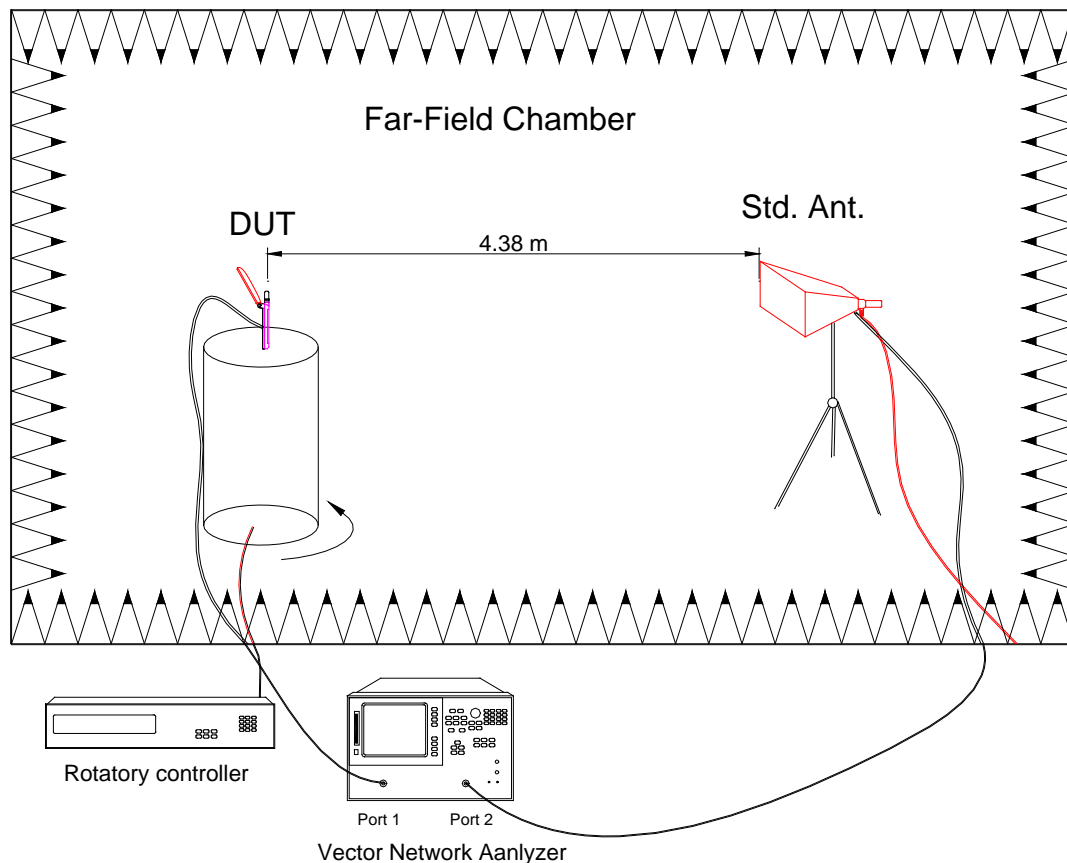
<p>UNLESS OTHER SPECIFIED TOLERANCES ON :</p> <p>X = ± X.X = ± X.XX = ±</p> <p>ANGLES = ± HOLEDIA = ±</p>		
<p>SCALE :</p> <p>DRAWN BY: LI</p> <p>DESIGNED BY: De wen</p>	<p>UNIT : mm</p> <p>CHECKED BY: YS</p> <p>APPROVED BY: YS</p>	<p>THIS DRAWINGS AND SPECIFICATIONS ARE THE PROPERTY OF TOXU TECHNOLOGY CO.,LTD.AND SHALL NOT BE REPRODUCED OR USED AS THE BASIS FOR THE MANUFACTURE OR SALE OF APPARATUS OR DEVICES WITHOUT PERMISSION</p>
<p>TITLE : KC.IA.00267 Antenna Specification</p>		

2-4. Efficiency and Gain

4-5.1 Measure method

1. Using a low loss coaxial cable to link a standard handset jig
2. Fixed this handset jig on chamber's rotator plane
3. Linking jig into network analyzer port and using a probing horn antenna to collect data.
4. Using another standard gain horn antenna to calibrated those data

4-5.2 Chamber definition



1. An anechoic chamber (7mx4mx3m) which satisfied far-field condition was applied to avoid multi-path effect
2. The quiet room region is 40cmx40cmx40cm at the center of rotator
3. The distance between DUT and standard antenna is 4.38 m
4. Probing antenna (9120D horn antenna) and standard gain horn antenna (BBHA9120 LPF 700MHz ~6GHz)

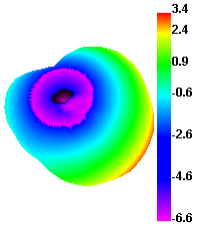
UNLESS OTHER SPECIFIED TOLERANCES ON :			
X = ±	X.X = ±	X.XX = ±	
ANGLES = ±	HOLEDIA = ±		
SCALE :	UNIT : mm		THIS DRAWINGS AND SPECIFICATIONS ARE THE PROPERTY OF TOXU TECHNOLOGY CO.,LTD.AND SHALL NOT BE REPRODUCED OR USED AS THE BASIS FOR THE MANUFACTURE OR SALE OF APPARATUS OR DEVICES WITHOUT PERMISSION
DRAWN BY: LI	CHECKED BY: YS		
DESIGNED BY: De wen	APPROVED BY: YS		
TITLE : KC.IA.00267 Antenna Specification			SPEC REV.
			P0

Shenzhen KingRF Technology Co.,Ltd
2-4-1 Efficiency and Gain

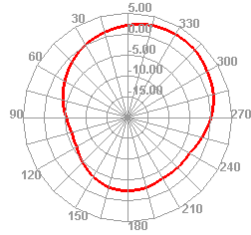
Freq (MHz)	Effi (%)	Effi (dB)	Gain (dBi)
1573	59.04	-2.29	0.91
1574	59.38	-2.26	0.82
1575	60.05	-2.21	0.71
1576	60.96	-2.15	0.89
1577	62.03	-2.07	0.98
Freq (MHz)	Effi (%)	Effi (dB)	Gain (dBi)
2400	53.36	-2.73	0.89
2410	68.27	-1.66	0.98
2420	58.85	-2.3	0.89
2430	70.06	-1.55	0.88
2440	55.38	-2.57	0.97
2450	59.1	-2.28	0.95
2460	61.69	-2.1	0.96
2470	65.68	-1.83	0.98
2480	68.03	-1.65	1.00
2490	70.09	-1.54	0.89
2500	62.63	-2.03	0.88

UNLESS OTHER SPECIFIED TOLERANCES ON :			
X = ±	X.X = ±	X.XX = ±	
ANGLES = ±	HOLEDIA = ±		
SCALE :	UNIT : mm	THIS DRAWINGS AND SPECIFICATIONS ARE THE PROPERTY OF TOXU TECHNOLOGY CO.,LTD.AND SHALL NOT BE REPRODUCED OR USED AS THE BASIS FOR THE MANUFACTURE OR SALE OF APPARATUS OR DEVICES WITHOUT PERMISSION	
DRAWN BY: LI	CHECKED BY: YS		
DESIGNED BY: De wen	APPROVED BY: YS		
TITLE : KC.IA.00267 Antenna Specification			SPEC REV. P0

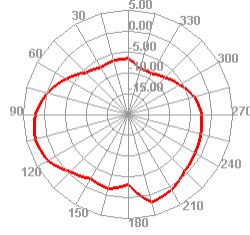
1561.000MHz



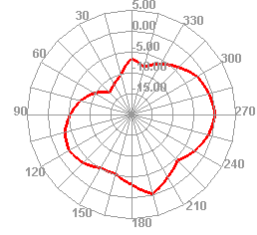
1561.000MHz H



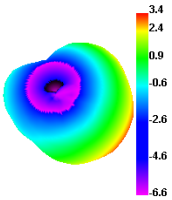
1561.000MHz E1



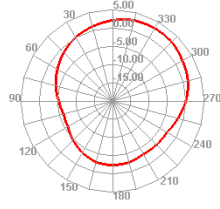
1561.000MHz E2



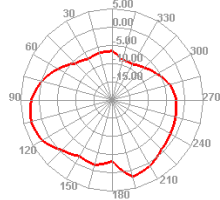
1561.000MHz



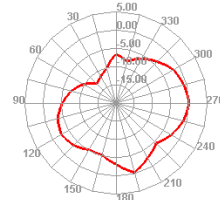
1561.000MHz H



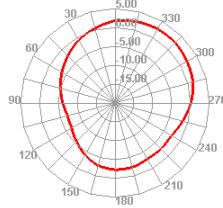
1561.000MHz E1



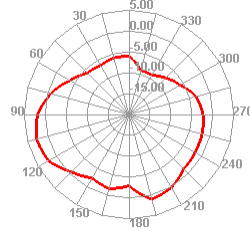
1561.000MHz E2



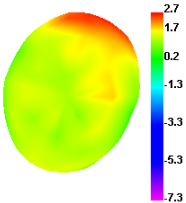
1575.000MHz H



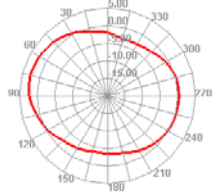
1575.000MHz E1



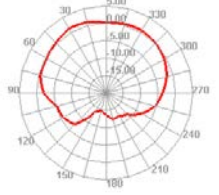
2400.000MHz



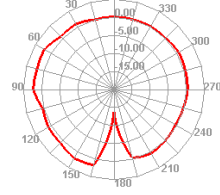
2400.000MHz H



2400.000MHz E1



2400.000MHz E2

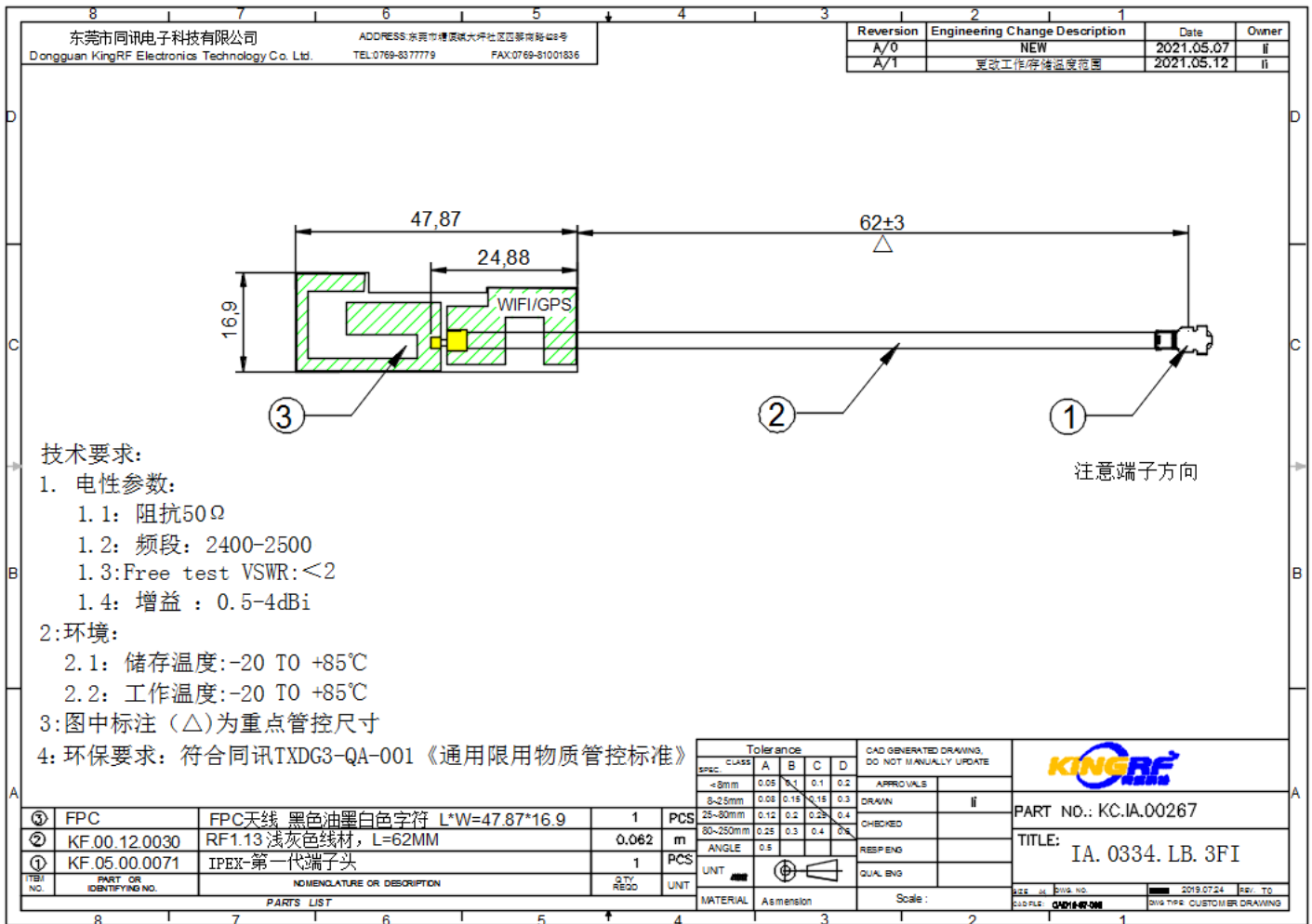


UNLESS OTHER SPECIFIED TOLERANCES ON :			
X = ± X.X = ± X.XX = ±			
ANGLES = ±		HOLEDIA = ±	
SCALE :	UNIT : mm	THIS DRAWINGS AND SPECIFICATIONS ARE THE PROPERTY OF TOXU TECHNOLOGY CO.,LTD.AND SHALL NOT BE REPRODUCED OR USED AS THE BASIS FOR THE MANUFACTURE OR SALE OF APPARATUS OR DEVICES WITHOUT PERMISSION	
DRAWN BY: LI	CHECKED BY: YS		
DESIGNED BY: De wen	APPROVED BY: YS		
TITLE : KC.IA.00267 Antenna Specification			SPEC REV.
			P0

3. Mechanical Specification:

3-1. Mechanical Configuration (Unit: mm)

The appearance of the antenna is according to drawing



UNLESS OTHER SPECIFIED TOLERANCES ON :		
X = ±	X.X = ±	X.XX = ±
ANGLES = ±		HOLEDIA = ±
SCALE :	UNIT : mm	THIS DRAWINGS AND SPECIFICATIONS ARE THE PROPERTY OF TOXU TECHNOLOGY CO.,LTD.AND SHALL NOT BE REPRODUCED OR USED AS THE BASIS FOR THE MANUFACTURE OR SALE OF APPARATUS OR DEVICES WITHOUT PERMISSION
DRAWN BY: LI	CHECKED BY: YS	
DESIGNED BY: De wen	APPROVED BY: YS	
TITLE : KC.IA.00267 Antenna Specification		SPEC REV. P0

3-2. Connector appearance: IPEX-1

3-3.Product Image:



UNLESS OTHER SPECIFIED TOLERANCES ON :			
X = ± X.X = ± X.XX = ±			
ANGLES = ± HOLEDIA = ±			
SCALE :	UNIT : mm	THIS DRAWINGS AND SPECIFICATIONS ARE THE PROPERTY OF TOXU TECHNOLOGY CO.,LTD.AND SHALL NOT BE REPRODUCED OR USED AS THE BASIS FOR THE MANUFACTURE OR SALE OF APPARATUS OR DEVICES WITHOUT PERMISSION	
DRAWN BY: LI	CHECKED BY: YS		
DESIGNED BY: De wen	APPROVED BY: YS		
TITLE : KC.IA.00267 Antenna Specification			SPEC REV.
			P0