

KC.IA.00401 WiFi/BT

Antenna Specification

1. Application:

This application shall apply for antenna unit which shall be used such as automotive, conventional communications, smart home, etc..

2. Electrical Specification:

Those specifications were specially defined for customer's model, and all characteristics were measured under the model's handset testing jig .

2-1. Frequency Band:


Frequency Band	MHz
WiFi/BT	2400~2500MHz

2-2. Impedance

50 ohm nominal

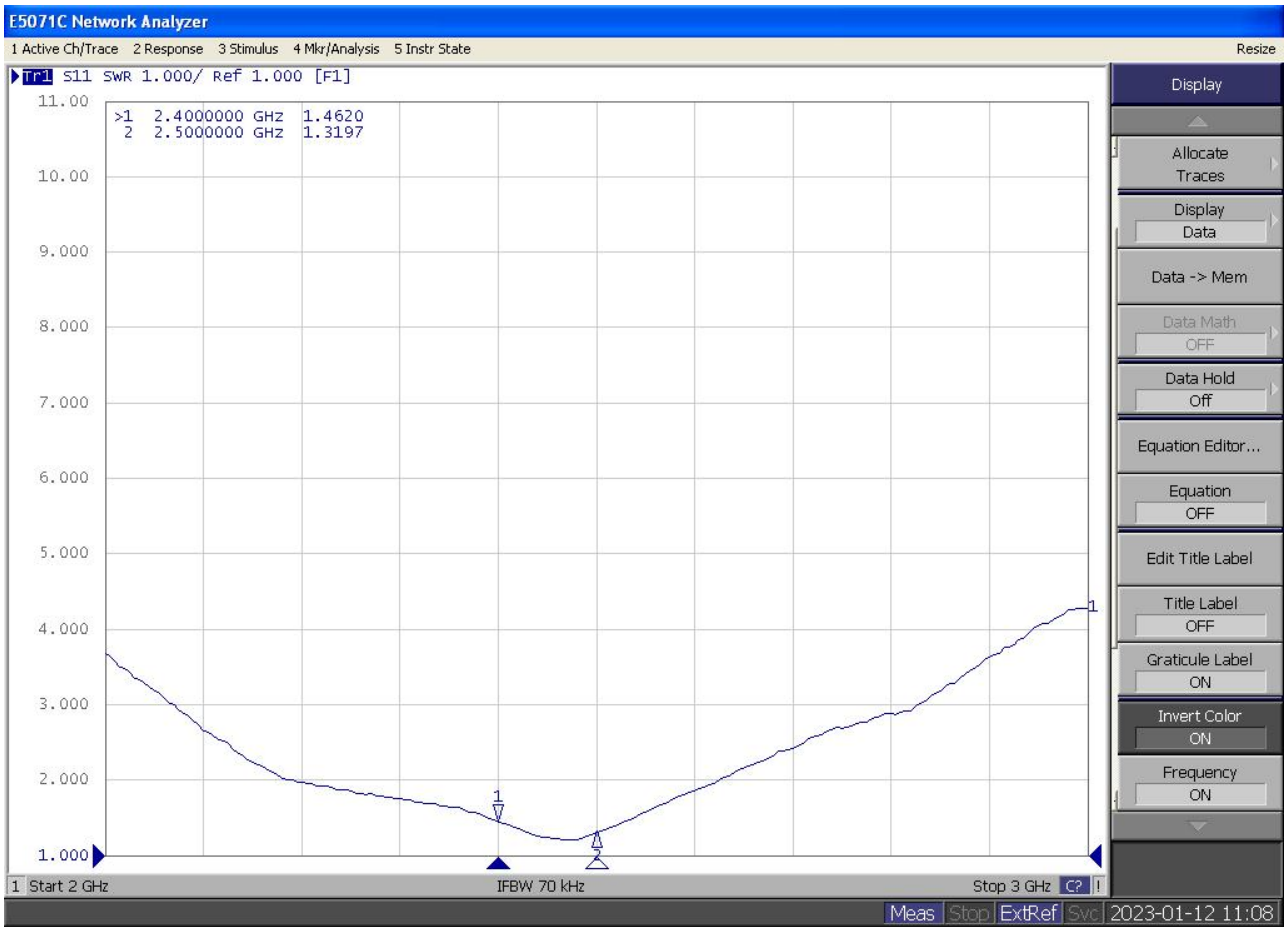
2-3. VSWR


2-3-1. Measurement frequency points and VSWR value

UNLESS OTHER SPECIFIED TOLERANCES ON :			TOXU TECHNOLOGY CO., LTD.
X = ±	X.X = ±		
ANGLES = ±		HOLEDIA = ±	
SCALE :	UNIT : mm		
DRAWN BY: LI	CHECKED BY: YS		
DESIGNED BY: De wen	APPROVED BY: YS		
TITLE : KC.IA.00401 Antenna Specification			SPEC REV.
			P0

WiFi/BT

Frequency Band(MHz)	2400	2500
Typical Value: (VSWR)	1.4	1.3



UNLESS OTHER SPECIFIED TOLERANCES ON :		 TOXU TECHNOLOGY CO., LTD.
X = ±	X.X = ±	
±	X.XX = ±	
ANGLES = ±	HOLEDIA = ±	
SCALE :	UNIT : mm	THIS DRAWINGS AND SPECIFICATIONS ARE THE PROPERTY OF KINGRF TECHNOLOGY CO.,LTD.AND SHALL NOT BE REPRODUCED OR USED AS THE BASIS FOR THE MANUFACTURE OR SALE OF APPARATUS OR DEVICES WITHOUT PERMISSION
DRAWN BY: LI	CHECKED BY: YS	
DESIGNED BY: De wen	APPROVED BY: YS	
TITLE : KC.IA.00401 Antenna Specification		SPEC REV.
		P0

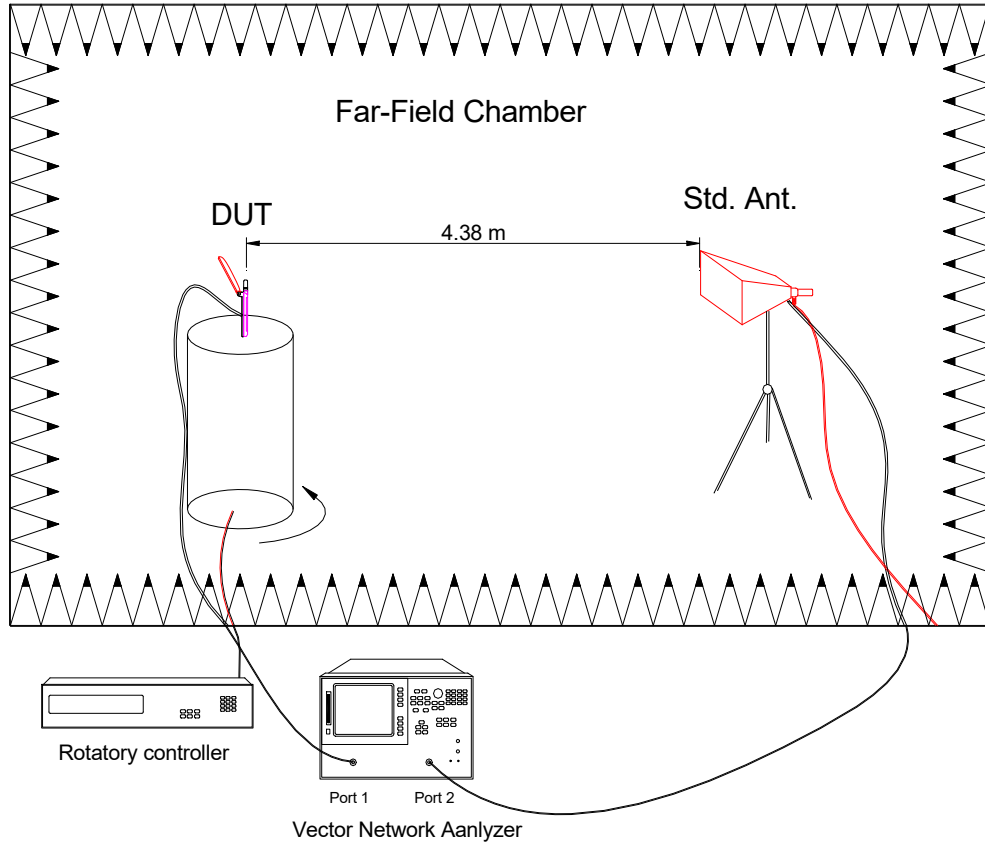
2-4. Efficiency and Gain

4-5.1 Measure method

1. Using a low loss coaxial cable to link a standard handset jig
2. Fixed this handset jig on chamber's rotator plane
3. Linking jig into network analyzer port and using a probing horn antenna to collect data.
4. Using another standard gain horn antenna to calibrated those data

4-5.2 Chamber definition

Z

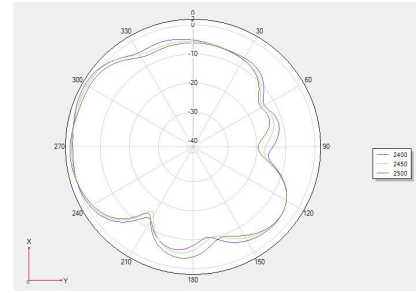
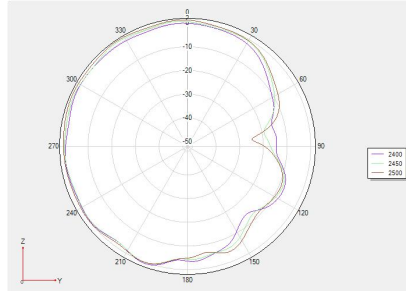
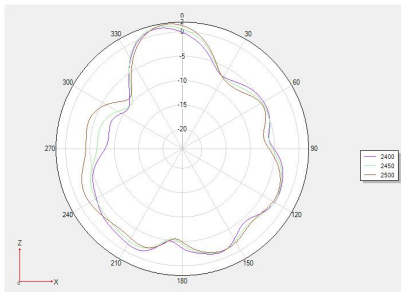
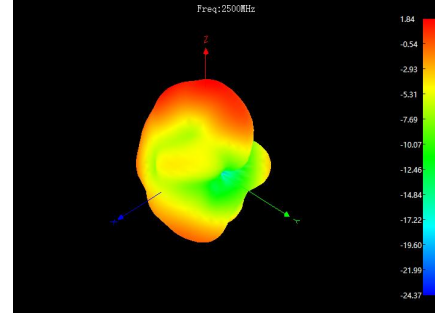
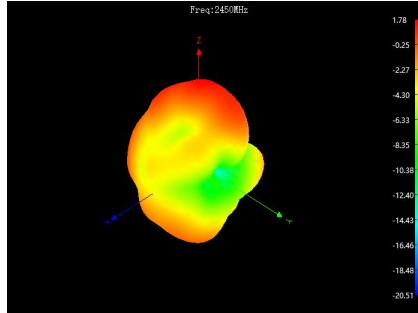
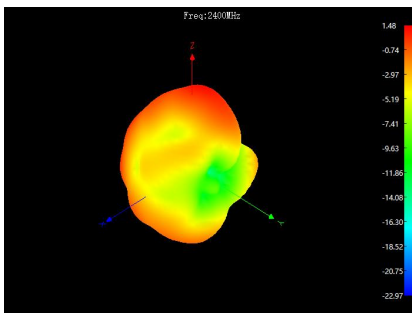


- (7mx4mx3m) which satisfied far-field condition was applied to avoid multi-path effect
2. The quite room region is 40cmx40cmx40cm at the center of rotator
3. The distance between DUT and standard antenna is 4.38 m
4. Probing antenna (9120D horn antenna) and standard gain horn antenna (BBHA9120 LPF 700MHz ~6GHz)

UNLESS OTHER SPECIFIED TOLERANCES ON :		TOXU TECHNOLOGY CO., LTD.
X = ±	X.X = ±	
±	X.XX = ±	
ANGLES = ±	HOLEDIA = ±	
SCALE :	UNIT : mm	THIS DRAWINGS AND SPECIFICATIONS ARE THE PROPERTY OF KINGRF TECHNOLOGY CO.,LTD.AND SHALL NOT BE REPRODUCED OR USED AS THE BASIS FOR THE MANUFACTURE OR SALE OF APPARATUS OR DEVICES WITHOUT PERMISSION
DRAWN BY: LI	CHECKED BY: YS	
DESIGNED BY: De wen	APPROVED BY: YS	
TITLE : KC.IA.00401 Antenna Specification		SPEC REV.
		P0

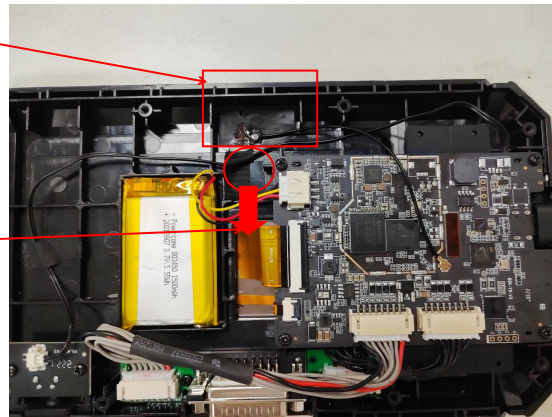
2-4-1WiFi/BT Efficiency and Gain

Frequency/MHz	Efficiency / %	MaxGain/dBi	Frequency/MHz	Efficiency / %	MaxGain/dBi
2400	53.58	1.48	2460	49.32	1.43
2410	56.49	2.0	2470	49.43	1.78
2420	56.49	1.75	2480	51.88	1.51
2430	53.33	1.96	2490	52.6	1.76
2440	51.17	1.67	2500	53.95	1.84
2450	49.77	1.78			



ANT Location

Power Connection
Line

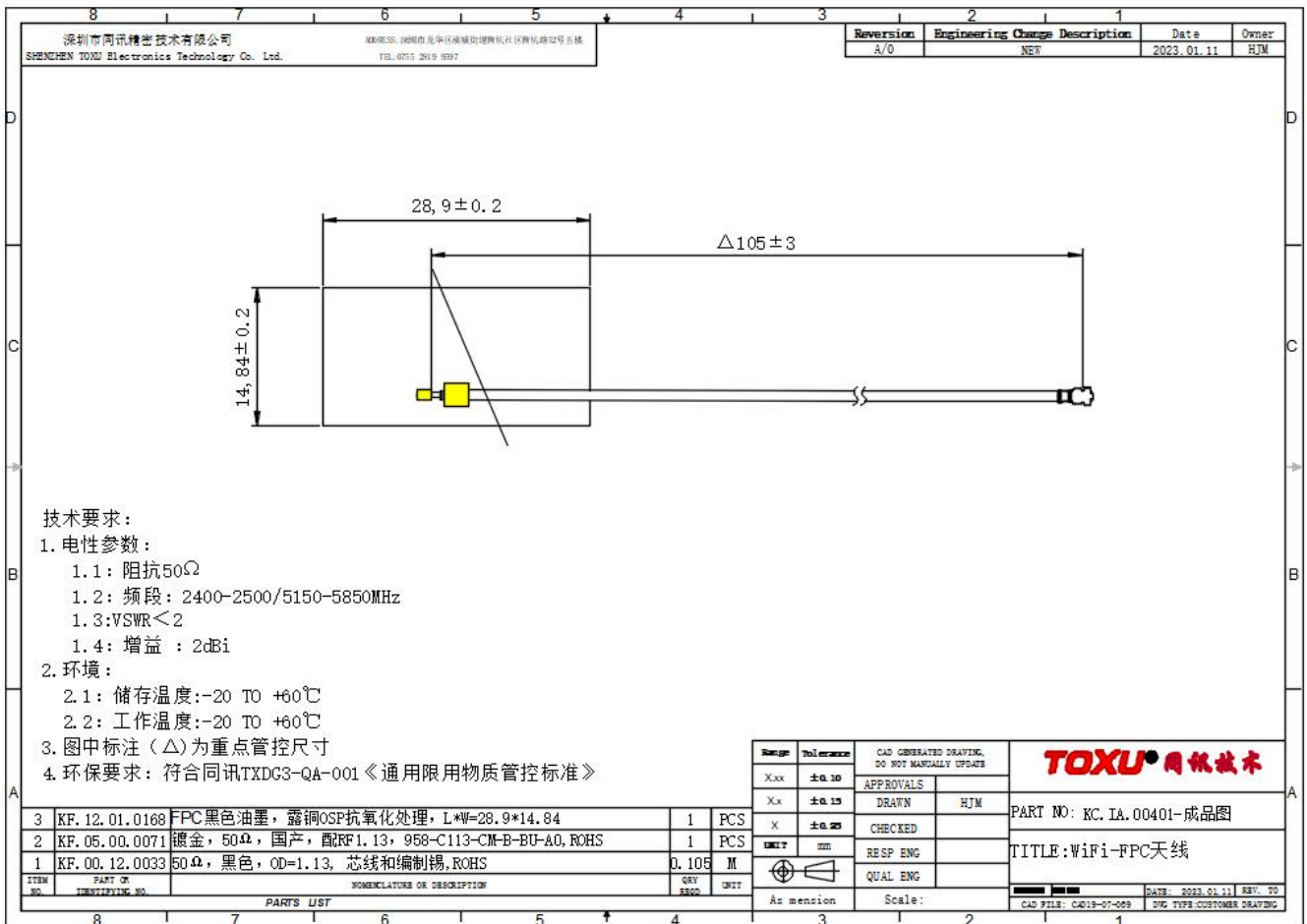


UNLESS OTHER SPECIFIED TOLERANCES ON :		TOXU 同讯技术	TOXU TECHNOLOGY CO., LTD.
$X = \pm$	$X.X = \pm$		
\pm	$X.XX = \pm$		
ANGLES = \pm	HOLEDIA = \pm		
SCALE :	UNIT : mm	THIS DRAWINGS AND SPECIFICATIONS ARE THE PROPERTY OF KINGRF TECHNOLOGY CO.,LTD.AND SHALL NOT BE REPRODUCED OR USED AS THE BASIS FOR THE MANUFACTURE OR SALE OF APPARATUS OR DEVICES WITHOUT PERMISSION	
DRAWN BY: LI	CHECKED BY: YS		
DESIGNED BY: De wen	APPROVED BY: YS		
TITLE : KC.IA.00401 Antenna Specification			SPEC REV.
			P0

3. Mechanical Specification:

3-1. Mechanical Configuration (Unit: mm)

The appearance of the antenna is according to drawing



UNLESS OTHER SPECIFIED TOLERANCES ON :		TOXU TECHNOLOGY CO., LTD.
X = ±	X.X = ±	
±	X.XX = ±	
ANGLES = ±	HOLEDIA = ±	
SCALE :	UNIT : mm	
DRAWN BY: LI	CHECKED BY: YS	THIS DRAWINGS AND SPECIFICATIONS ARE THE PROPERTY OF KINGRF TECHNOLOGY CO.,LTD.AND SHALL NOT BE REPRODUCED OR USED AS THE BASIS FOR THE MANUFACTURE OR SALE OF APPARATUS OR DEVICES WITHOUT PERMISSION
DESIGNED BY: De wen	APPROVED BY: YS	
TITLE : KC.IA.00401 Antenna Specification		SPEC REV.
		P0

4 .Packaging specification:

Product number: KC.IA.00401

Product model: WIFI&BT

一、 Label requirements:

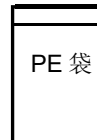
Customer	xxx		
supplier	xxxxxx		
Material coding	xx		
Product model	xx		
Number	XXX PCS	Factory date	X X X
Remarks			

二、 Boxing:

Job description:

1. Inner packaging:

XXpcs A bag

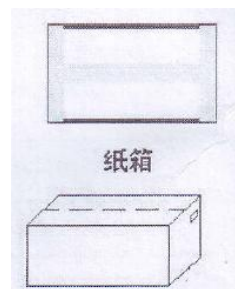



2. External packaging:

Xx PCS ;

3. Matters needing attention:

- Whether to add partition and pearl cotton;
- Label attachments, such as ROHS, etc.;



UNLESS OTHER SPECIFIED TOLERANCES ON :		 TOXU TECHNOLOGY CO., LTD.
X = ±	X.X = ±	
±	X.XX = ±	
ANGLES = ±	HOLEDIA = ±	
SCALE :	UNIT : mm	THIS DRAWINGS AND SPECIFICATIONS ARE THE PROPERTY OF KINGRF TECHNOLOGY CO.,LTD.AND SHALL NOT BE REPRODUCED OR USED AS THE BASIS FOR THE MANUFACTURE OR SALE OF APPARATUS OR DEVICES WITHOUT PERMISSION
DRAWN BY: LI	CHECKED BY: YS	
DESIGNED BY: De wen	APPROVED BY: YS	
TITLE : KC.IA.00401 Antenna Specification		SPEC REV.
		P0