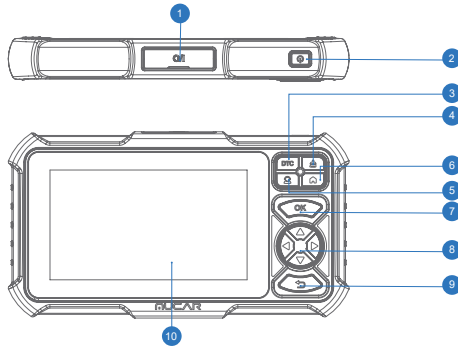


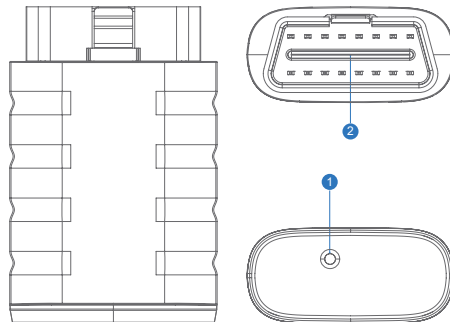


MUCAR CDE900 MAX

1. Product Descriptions



1. **Charging Port:** TYPE-C charging port & USB debugging port.
2. **Power/Screen Lock Button:** Long press for 5 seconds to turn on or off.
3. **DTC Button:** Trouble code query analysis.
4. **🔧 Button:** Clear fault code.
5. **👤 Button:** Customer service.
6. **🏠 Button:** Back to Home page.
7. **OK Button:** Confirm button.
8. **Selection Buttons:** Up, down, left and right direction selection.
9. **Return Button:** Return to the previous step.
10. **Touch Screen:** 7 inches (1024*600 resolution).



- 1. Diagnostic VCI Dongle:** Green: device is powered on. Blue: bluetooth is connected. Red: there is a fault code.
- 2. OBD Port:** Plug in the diagnostic cable whose OBD 16-pin connector is linked to the DLC of the vehicle.

2. Technical Specifications

MUCAR CDE900 MAX Tablet

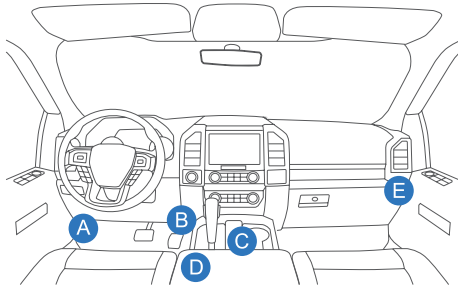
- Display: 7" display
- Working Environment: 0~50°C (32~122°F)
- Storage Environment: -20~60°C (-4~140°F)
- Working Voltage: 5V
- Working Current: ≤2.5A
- Supported Protocols: ISO9141, KWP2000 (ISO 14230), J1850PWM, J1850VPM and CAN OBDII protocol.

MUCAR CDE900 MAX Diagnostic VCI Dongle

- Working Voltage: 9~18V
- Working Current: <60mA
- Working Environment: 14°F~122°F (-10°C~50°C)
- Storage Environment: -4°F~144°F (-20°C~60°C)

3. How To Use

Connect the MUCAR CDE900 MAX with your vehicle through the OBDII port.



Usually, the OBD port is located under the dashboard, above the pedal on the driver's side. The five locations shown in the picture are common OBDII port locations.

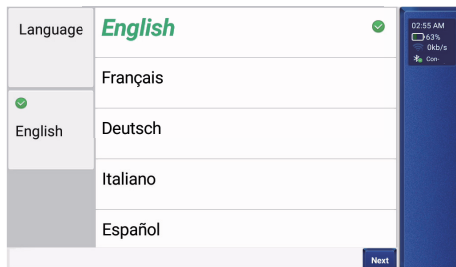
4. Turn on the MUCAR CDE900 MAX

Hold the Power button for 5 seconds to turn the MUCAR CDE900 MAX on. The tablet will start initializing and enter the following interface.



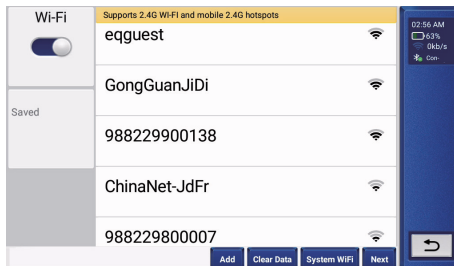
Note: Don't connect or disconnect any test equipment with the ignition on or engine running.

5. Language Setting



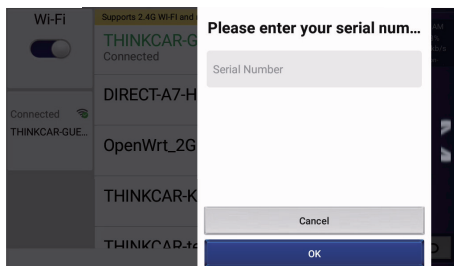
Used to select the tool language.

6. Connect Wi-Fi



The system will automatically search all available Wi-Fi networks. You can choose the Wi-Fi needed. Tap "Next". It will automatically jump to the Home Page.

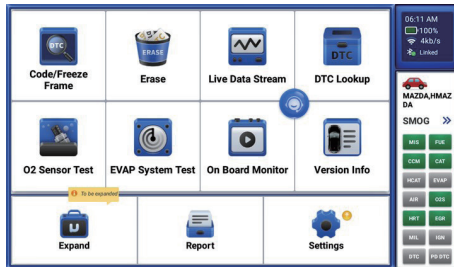
7. Binding dongle



Enter the serial number to binding dongle.

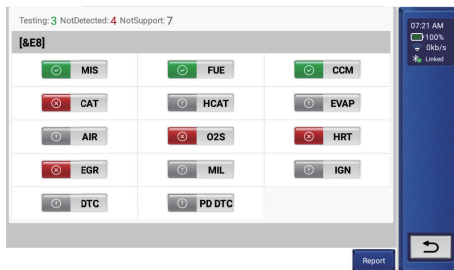
Tip: If you need to untie or replace the connector, please contact customer service for handling.

8. Function Description



MUCAR CDE900 MAX has 12 main modules, Code/Freeze Frame, Erase, Live Data Stream, O2S Test, EVAP System Test, On Board Monitor, Version info, DTC Lookup, Expand, Report, Settings, SMOG.

1. Plug in the OBD diagnostic cable after the car is turned on, and the device will automatically scan for OBD protocols (wait while scanning).

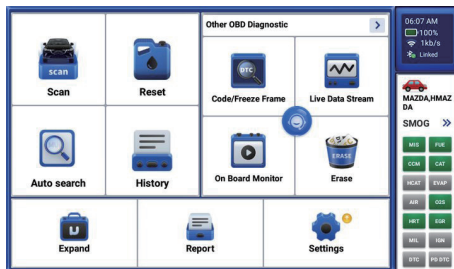


Note: You can click on "SMOG" to see the corresponding supported protocols, grey protocols are not supported, green protocols are ready and red protocols are not ready.

2. Select "Code/Freeze Frame" to view fault codes and freeze pins. Select "Read DTC", and select vehicle model to view dtc. Select "View Freeze Frames", monitor status since DTCs cleared, view the engine's current power system diagnostics.
3. Select "Erase" and click "OK" to clear the fault code.
4. Select "Live Data Stream" and click "OK" to view all data streams.
5. Select "DTC Lookup" to query fault code analysis.
6. Select "O2 Sensor Test" and click "OK" to view the O2 Sensor data flow.

7. select "EVAP System Test" and click "OK" to view EVAP data streams.
 8. Select "On Board Monitor" and click "OK" to view On Board Monitor data streams
 9. Select "Vehicle Info"function retrieves a list of information (provided by the vehicle manufacturer) from the vehicle's on-board computer.
- Tip:This information may include: VIN (Vehicle Identification Number),CID (Calibration ID),CVN (Calibration Verification Number).
- 10 Select "Expand" allows you to purchase the reset and related model software.
 11. Select "Report" and click "OK" to view the diagnostic record. Report view data flow reports, PDF documents generated by product diagnostic reports.
 12. Select "Settings" to set the basic settings, there are functions such as feedback, repair info, upgrade, order, setting language, etc. Click update to upgrade models, need to expand 4 systems,demos and auto search function modules. Click on the app to enter the app application update, which can update the application app and the local firmware.

9. Extended Function Description



Note: You can click on "SMOG" to see the corresponding supported protocols, grey protocols are not supported, green protocols are ready and red protocols are not ready.

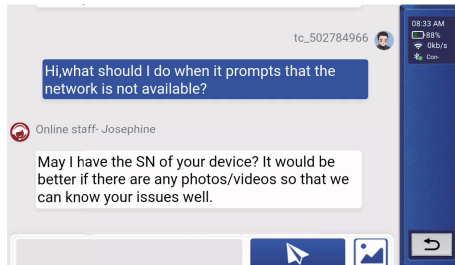
1.Scan: The module has a demo (demonstrates the diagnostic process) and model software.

2. Reset: MUCAR CDE900 MAX has 34 common maintenance and reset functions (AIR FUEL, BLEED, AFS, ADBLUE, SUS, AIRBAG, BMS, BRAKE, COOLANT, DPF, EGR, ETS, GEAR, BOX, IMMO, INJEC, LANGUAGE, NOX SENSOR, ODO, OIL, SEAT, SAS, STOPSTART, SUN, TPMS, TRANSPORT, TYRE, WINDOW, AC System Relearn/Initialization, Intelligent

Cruise Control System,Engine Power Balance Monitoring,Gas Particulate Filter Regeneration,Motor Angle Calibration,High Voltage Battery Diagnostics).

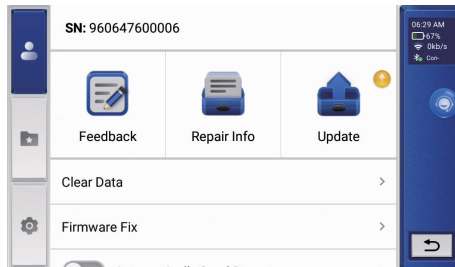
3. Auto search : Automatically scan the model VIN and model list (not including all models).
4. History: This feature includes diagnostic logging.

10. Customer Service



Click the 👤 button, and then human online customer service will appear to answer the questions you encounter during the use of the product, giving you a better experience of using the product.

11. Settings



You can modify or add related information in this module, or make settings after the initial setting is completed.

- **Feedback:** This module can record and establish the file of the diagnosed vehicles,

including all diagnostic-related data such as diagnostic reports, and data stream records.

· **Repair Info:** This module includes four sections:

- 1) Instruction: View Product Brochure.
- 2) Coverage List: The supported vehicles' information.
- 3) Video: Contains table usage tips, maintenance, and diagnostic guides.
- 4) Learning Course: Demonstrates how to operate the tool.

· **Update:** This module allows you to update the diagnostic software & App to the latest version. A pop-up message will indicate newer software is available if you don't update the software in the process of registration.

12. FAQ

Q: Why does MUCAR CDE900 MAX have no responses when it is connected to a car?

A: Check if the connection with the vehicle diagnostic socket is solid, or check if the ignition switch is on, or if the tool supports the car.

Q: Why does the system stop when reading the data stream?

A: It may be caused by a slackened connector. Please turn off the scanner, firmly connect the connector, and switch it on again.

Q: Communication error with vehicle ECU?

A: Please confirm the following cases:

- Whether diagnostic connector is correctly connected.
- Whether ignition switch is ON.

Or, send your vehicle's year, make, model and VIN number to us using Feedback feature for timely technical assistance.

Q: Why does the screen flash when the engine ignition starts?

A: It is normal and caused by electromagnetic interference.

Q: How to upgrade the system software?

A: 1. Power on the tool and ensure a stable Internet connection.

2. Go to "Settings" → "Update" → "App", tap "OTA" and then tap "check version" to enter the system upgrade interface.

3. Complete the process by following the instructions on the screen step by step. It may take a few minutes depending on the status of your network.

After the upgrade is finished, the tool will automatically restart and display the main interface.

Q: How to capture the screenshot?

A: Pull down the taskbar and click on the screenshot icon to capture the current screen, it will be saved in the Photo Album module.

Q: What should I do when it prompts that the network is unavailable?

A: Pull down the task bar, click the WIFI icon to connect to the available network.

13. Warranty Terms

This warranty applies only to users and distributors who purchase MUCAR CDE900 MAX products through normal procedures. Provide free warranty within one year. MUCAR warranty including electronic products for damages caused by defects in materials or workmanship. Damages to the equipment or components caused by abusing, unauthorized modification, using for non-designed purposes, operation in a manner not specified in the instructions, etc. are not covered by this warranty. The compensation for dashboard damage caused by the defect of this equipment is limited to repair or replacement. MUCAR does not bear any indirect and incidental losses. MUCAR will judge the nature of the equipment damage according to its prescribed inspection methods.

Please contact Online Customers Service via the order interface.

Service Line: 1-909-757-1959

Customer Service Email: support@mythinkcar.com

Official Website: www.mythinkcar.com

Product tutorials, videos, FAQ's and coverage lists can be found on the official mucar website, or download the Thinkcar bay APP for more product information.

Follow us on



@thinkcar.official



@ObdThinkcar

FCC Warning

This device complies with part 15 of the FCC Rules. Operation is subject to the following two conditions:

(1) this device may not cause harmful interference, and (2) this device must accept any interference received, including interference that may cause undesired operation.

This equipment has been tested and found to comply with the limits for a Class B digital device, pursuant to part 15 of the FCC Rules. These limits are designed to provide reasonable protection against harmful interference in a residential installation. This equipment generates, uses and can radiate radio frequency energy and, if not installed and used in accordance with the instructions, may cause harmful interference to radio communications. However, there is no guarantee that interference will not occur in a particular installation. If this equipment does cause harmful interference to radio or television reception, which can be determined by turning the equipment off and on, the user is encouraged to try to correct the interference by one or more of the following measures:

- Reorient or relocate the receiving antenna.
- Increase the separation between the equipment and receiver.
- Connect the equipment into an outlet on a circuit different from that to which the receiver is connected.
- Consult the dealer or an experienced radio/TV technician for help.

Any changes or modifications not expressly approved by the party responsible for compliance could void the user's authority to operate the equipment.

FCC WARNING

This equipment complies with FCC radiation exposure limits set forth for an uncontrolled environment.

End user must follow the specific operating instructions for satisfying RF exposure compliance. This transmitter must not be co-located or operating in conjunction with any other antenna or transmitter.

The mobile device is designed to meet the requirements for exposure to radio waves established by the Federal Communications Commission (USA). These requirements set a SAR limit of 1.6 W/kg averaged over one gram of tissue. The highest SAR value reported under this standard during product certification for use when properly worn on the body is 0.495W/kg.

For body operation, this device has been tested and meets FCC RF exposure guidelines when used with any accessory that contains no metal and that positions a minimum of 0mm from the body. Use of other accessories may not ensure compliance with FCC RF exposure guidelines.

ISED Warning

This device complies with Innovation, Science and Economic Development Canada's license-exempt RSS standard(s).

Operation is subject to the following two conditions:

- (1) this device may not cause harmful interference,
- (2) this device must accept any interference, including interference that may cause undesired operation of the device.

Cet appareil est conforme aux normes RSS exemptées de licence d'innovation, sciences et développement économique Canada. Le fonctionnement est soumis aux deux conditions suivantes:

- (1) ce dispositif ne peut pas causer d'interférence nuisible,
- (2) ce dispositif doit accepter toute interférence, y compris l'interférence qui peut causer un fonctionnement indésirable du dispositif.

IC WARNING

This equipment complies with ISED radiation exposure limits set forth for an uncontrolled environment.

End user must follow the specific operating instructions for satisfying RF exposure compliance. This transmitter must not be co-located or operating in conjunction with any other antenna or transmitter.

The mobile device is designed to meet the requirements for exposure to radio waves established by the Innovation, Science and Economic Development Canada (Canada). These requirements set a SAR limit of 1.6 W/kg averaged over one gram of tissue. The highest SAR value reported under this standard during product certification for use when properly worn on the body is 0.495W/kg.

For body operation, this device has been tested and meets ISED RF exposure guidelines when used with any accessory that contains no metal and that positions a minimum of 0mm from the body. Use of other accessories may not ensure compliance with ISED RF exposure guidelines. Cet équipement est conforme aux limites d'exposition aux rayonnements ISED établies pour un environnement non contrôlé. L'utilisateur final doit suivre les instructions d'utilisation spécifiques pour satisfaire la conformité d'exposition RF. Cet émetteur ne doit pas être co-localisé ou fonctionner en conjonction avec une autre antenne ou un autre émetteur. L'appareil mobile est conçu pour répondre aux exigences d'exposition aux ondes radio établies par Innovation, Sciences et Développement économique Canada (Canada). Ces exigences fixent une limite DAS de 1,6 W/kg en moyenne sur un gramme de tissu. La valeur SAR la plus élevée signalée dans le cadre de cette norme lors de la certification du produit à utiliser lorsqu'il est correctement porté sur le corps est de 0,495W/kg.

Pour le fonctionnement du corps, cet appareil a été testé et répond aux directives d'exposition RF ISED lorsqu'il est utilisé avec tout accessoire qui ne contient pas de métal et qui se positionne à au moins 0 mm du corps. L'utilisation d'autres accessoires peut ne pas garantir la conformité aux directives d'exposition RF ISED.