

QYK  
SONIC

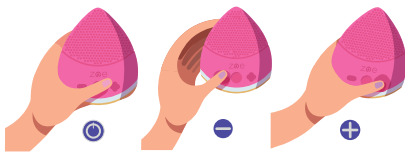
zoe bliss



## USER MANUAL

### Setup:

**Power On & Intensity settings.** Power On the ZOE-bliss by pressing the indented button on the flat side. Zoe Bliss has 15 levels of pulsation Intensities. Higher levels of intensities suit cleansing, while lower levels are for anti aging and massage. You may also adjust the intensity of pulsations to suit your skin type.



The intensity level you select is memorized, so every time the device is powered on, it starts at the intensity level previously set to. You may change the intensity to desired level when using, or you may simply select the best intensity level that suits your skin type so everytime the device starts at that level.

### Cleansing:



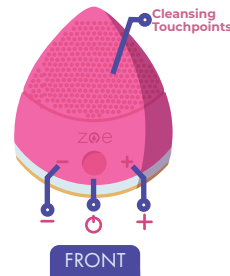
# Thank you :)

and Congratulations on purchasing your Zoe, the latest in SkinCare Tech, from QykSonic.

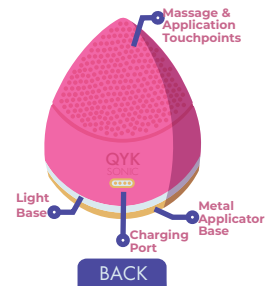
Your Zoe is a simple yet highly effective skincare device that efficiently cleanses and rejuvenates your skin using Sonic pulsations through thousands of silicone touch points. Consistent use makes your skin smooth, keeps it looking younger and boosts the natural glow as well as preventing acne breakouts, wrinkles and signs of aging.

We hope you will greatly enjoy the benefits of your Zoe, but first please take a few minutes to go through this user manual to ensure proper use and care for your skin as well as Zoe.

### Introduction:



You will find 3 buttons under the bristles on the front as shown above. The center button to Power On/Off, and the buttons marked - & + to adjust the Pulsation Intensity.

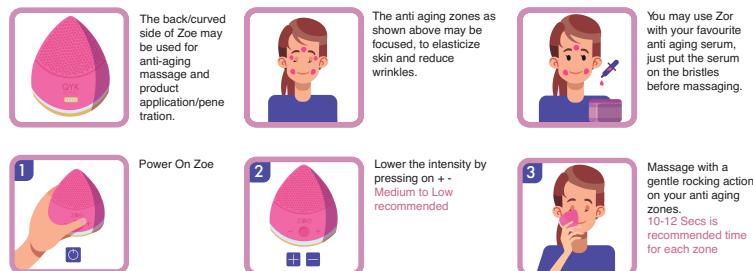


Zoe is made of medical grade silicone and has Soft cleansing touchpoints on the front and Medium-Hard Touchpoints on the back. The front is suited for facial cleansing, for all skin types, while the back is used for Anti-Aging Massage and also to help Product Application and Penetration.

### Cleansing:



### Anti-Aging mode:



## Product Application mode:



1 Press power button twice to enter product application mode.



2 Apply product onto your face or on the back side of Zoe.



3 Gently push the product into the skin using gentle press and roll massage.



4 Power off by pressing power button once.

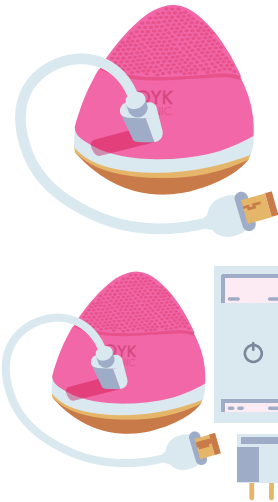


5 Clean Zoe by washing with water and soap.



6 Towel Dry Zoe for use again.

## Charging:



To Charge your Zoe, dry the device using a towel and connect the magnetic connectors on the device and cable. The connector snaps into place and the base blinks in single color.

You may charge using any USB outlet, a wall socket mobile phone charger or even a laptop. The LEDs would blink when the battery is charging and stay steady once charged.

**Once charging is complete, the base blinks in multi color indicating the device may be unplugged.**

## Care and Precautions in using / handling Zoe

- Zoe is intended for Facial and Skin cleansing Only, please do not use it for any other purposes.
- Silicone and Clay based cleansing products and not recommended for use with Zoe, as they may damage the silicone material of the device.
- If you have skin allergies or skin conditions, please consult your physician or dermatologist before using Zoe.
- Do not use Zoe on any cuts, open wounds or rashes.
- Use around the eyes with extreme care.
- Do not bring the device into direct contact with eyes or eyelids.
- Discontinue using Zoe and consult a physician or licensed qualified healthcare professional immediately if you experience any discomfort or pain.
- Do not cleanse your skin with Zoe for more than 3 minutes at a time as it may over-cleanse your skin.
- Adult Care and supervision is necessary when Zoe is used on children, and people with reduced physical and mental abilities.
- Store your zoe in a dry and hygienic place and avoid leaving it in direct sunlight.
- Do not use extremely hot water to clean the device or with the device.
- The device has a Li-ion battery which may be at risk of explosion when exposed to high heat.
- Do not charge your Zoe using a Car USB charger or leave it inside a car while charging.
- Use only a 5V 1A USB Charger, commonly used for cell-phones and disconnect from the charger once fully charged.
- For any issues with the device please refer to the troubleshooting tips in this guide or contact a us at QykSonic for support.

## Trouble-Shooting:

Issue	Cause	Solution
<b>Pulsations seemingly weak</b>	Low battery	Charge the battery by plugging into a USB Outlet/Charger
<b>Zoe Doesn't turn on when power button is pressed</b>	Battery out of charge	Charge the battery by plugging into a USB Outlet/Charger
<b>Base blinks Purple when power button is pressed</b>	Device in Lock Mode	Unlock the device by pressing both + & - buttons together for 5 seconds until the base blinks green.
<b>Base doesn't flash when charging cable is plugged</b>	<ul style="list-style-type: none"> <li>• Cable not plugged in properly</li> <li>• USB Charger / Outlet not working.</li> </ul>	<ul style="list-style-type: none"> <li>• Adjust or plug the charging cable firmly on both sides.</li> <li>• Check Charging Outlet or switch to different one.</li> </ul>

**Travel Lock:** Zoe-Bliss features a travel lock to prevent device from accidentally turning on.

To Lock the device, Press & Hold both + & - buttons for 3 Seconds.

When locked, device does not respond to any buttons and shows a purple light when power button is pressed.

To Unlock the device, Press & Hold + & - buttons for 3 seconds until the base flashes green.

## Warranty information:

QykSonic warrants the device for a period of One (1) YEAR from the verified original date of purchase, against any manufacturing defects, faulty materials and/or workmanship. QykSonic will repair or replace the device at no cost to the user if any defects are noticed and notified to us within the warranty period. The warranty does not cover the normal wear and tear in using the product or damage from accident, mishandling, misuse or neglect. The warranty only covers the parts that affect the device's normal function. Any disassembly, repair or attempts to repair the device by the user or parties unauthorized by QykSonic will void the warranty. A reasonable evidence or purchase, to validate the purchase date, must be provided to claim the warranty. Warranty repairs and replacements are at the discretion of QykSonic after determination of all factors for the warranty including validation of warranty period, and condition of the device and factors leading to the fault. This warranty provision is in addition to your statutory rights as a consumer and does not affect those rights in any way.

## Technical specifications:

**Construction Material:** ABS Plastic

**Skin:** Medical Grade Silicone

**Charging Voltage:** 5V DC / 600mA

**Operation Voltage:** 3.7V DC / 200mA

**Battery:** Rechargeable Li-ion (3.7V 300mAh)

**Power:** 0.3 Watts

**Device Size:** 81mm (W) x 91mm (H) x 30mm (T) (3.1 (W) x 3.6 (H) x 1.2 (T) inches)

**Device Weight:** 80 grams (3 oz)

**Charging connector type:** Proprietary USB

**Device must disposed carefully according to local waste collection procedures for electronic equipment.**



## FCC Statement

FCC ID: 2AU9F-ZOEBLISS

This device complies with part 15 of the FCC rules. Operation is subject to the following two conditions: (1) this device may not cause harmful interference, and (2) this device must accept any interference received, including interference that may cause undesired operation.

Changes or modifications not expressly approved by the party responsible for compliance could void the user's authority to operate the equipment.

NOTE: This equipment has been tested and found to comply with the limits for a Class B digital device, pursuant to part 15 of the FCC Rules. These limits are designed to provide reasonable protection against harmful interference in a residential installation. This equipment generates uses and can radiate radio frequency energy and, if not installed and used in accordance with the instructions, may cause harmful interference to radio communications. However, there is no guarantee that interference will not occur in a particular installation. If this equipment does cause harmful interference to radio or television reception, which can be determined by turning the equipment off and on, the user is encouraged to try to correct the interference by one or more of the following measures:

- Reorient or relocate the receiving antenna.
- Increase the separation between the equipment and receiver.
- Connect the equipment into an outlet on a circuit different from that to which the receiver is connected.
- Consult the dealer or an experienced radio/TV technician for help.

The device has been evaluated to meet general RF exposure requirement. The device can be used in portable exposure condition without restriction.